

- ### RENOVATION NOTES
- M.C. SHALL FIELD VERIFY ALL EXISTING CONDITIONS AT THE JOB SITE PRIOR TO BEGINNING WORK. NOTIFY FOOD LION SHARED SERVICES GROUP, L.L.C. Construction Manager OF ANY DISCREPANCIES.
 - FOR TRANSVERSE JOINTS 12" WIDE AND LARGER, PROPRIETARY DUCT CONNECTORS SHALL BE DUCT MATE OR WARD AND INSTALLED IN COMPLETE ACCORDANCE WITH MANUFACTURERS' RECOMMENDATIONS. DUCT SEALANT TO BE DUCT MATE 440 CASSETT TYPE OR EQUAL. ALL DUCTWORK SHALL BE CONSTRUCTED TO A 2" PRESSURE CLASS. FOR TRANSVERSE JOINTS 11" WIDE OR SMALLER, THE ABOVE MAY BE USED, OR REFER TO SMACNA TO DETERMINE PROPER DUCT CONSTRUCTION FOR THE SPECIFIED PRESSURE CLASS.
 - ALL DUCTWORK WITH A WIDTH DIMENSION OF 48" OR LARGER SHALL BE SUPPORTED WITH TRAPEZE TYPE HANGERS. SUPPORTS SHALL BE ATTACHED TO DUCTWORK PRIOR TO APPLICATION OF EXTERNAL INSULATION. INSULATION SHALL BE APPLIED TO COMPLETELY COVER DUCTWORK AND SUPPORTS.
 - DUCTS CONNECTING TO NEW AND/OR RELOCATED DIFFUSERS SHALL BE INLET SIZE OF DIFFUSER. PROVIDE VOLUME DAMPER FOR BRANCH TAKEOFF AS INDICATED ON PLAN.
 - ALL LONGITUDINAL SEAMS AND NON-GASKETED TRANSVERSE JOINTS SHALL BE EXTERNALLY SEALED WITH HIGH PRESSURE DUCT SEALER BY UNITED MCGILL OR EQUAL. SEALER SHALL BE APPLIED BY M.C. AND APPROVED BY FOOD LION CONSTRUCTION MANAGER BEFORE DUCT INSULATION IS INSTALLED.
 - ALL NEW DUCT SIZES SHOWN ARE "INSIDE-CLEAR" DIMENSIONS. ALL NEW DUCTWORK SHALL HAVE 2", 3/4" R/OF, EXTERNALLY WRAPPED INSULATION WITH VAPOR BARRIER (SEE SPECIFICATIONS). ROUTE ALL NEW DUCTWORK AS TIGHT TO ROOF JOISTS AS PRACTICAL. COORDINATE ROUTING TO AVOID CONFLICTS WITH OTHER TRADES.
 - FLEXIBLE DUCT MAY BE USED AT END OF RUNOUTS IN LENGTHS NOT EXCEEDING 4'-0". INSTALL PER SMACNA STANDARDS (SEE SPECIFICATIONS).
 - PROVIDE 90° METAL (24 GA. MINIMUM) DUCT ELBOW WITH 4 PIECE GORE AT ALL CEILING DIFFUSER/GRILLE-TO-FLEX DUCT CONNECTIONS.
 - M.C. SHALL VERIFY SIZE OF EXISTING DUCTWORK SCHEDULED TO REMAIN. EQUIPMENT OPENINGS AS REQUIRED FOR PROPER CONNECTION OF NEW TO EXISTING.
 - M.C. SHALL INSPECT AND REPAIR DUCTWORK AS REQUIRED TO PROVIDE A TIGHT AIR DISTRIBUTION SYSTEM. M.C. SHALL CAP AND INSULATE ALL OPEN DUCT TERMINATIONS AND OTHER OPENINGS IN EXISTING DUCTWORK DIRECTLY RESULTING FROM OR INCIDENTAL TO DEMOLITION. ALL SUPPLY AND RETURN OUTLETS SHALL BE BALANCED TO THE AIR FLOW QUANTITIES SHOWN ON DRAWINGS.
 - M.C. SHALL COORDINATE ALL WORK WITH OTHER TRADES TO AVOID CONFLICTS.
 - COORDINATE ALL DIFFUSER AND GRILLE LOCATIONS WITH CEILING GRID AS SHOWN ON ARCHITECTURAL DRAWINGS.
 - TEMPERATURE AND HUMIDITY SENSORS AND CONTROLS SHALL BE MOUNTED @ 5'-8" A.F.F. U.N.O. VERIFY MOUNTING HEIGHTS, LOCATIONS, AND CONTROL SETTINGS WITH PROPER FOOD LION CONSTRUCTION MANAGER.
 - CONTROL WIRING FOR NEW SENSORS, MOTORIZED DAMPERS, ETC. TO BE FURNISHED AND INSTALLED BY M.C. CONTROL WIRING SHALL BE ROUTED TO ECP/EMCC PANELS UNLESS OTHERWISE INDICATED. E.C. SHALL PROVIDE CONDUIT SYSTEM WITH PULL STRINGS. COORDINATE CONTROL WORK WITH PROPER FOOD LION CONSTRUCTION MANAGER.
 - EXISTING MOTOR STARTER CONTROLS FOR THE MACHINE ROOM TO BE WIRED TO ECP.
 - ALL SENSOR CONTROL WIRING SHALL BE SHIELDED (MINIMUM #22 AWG OR LARGER). CONTROL WIRING SHALL BE STRANDED (#14 AWG). DO NOT MIX SENSOR CABLE AND CONTROL WIRING IN SAME CONDUIT.
 - M.C. TO COORDINATE DUCTWORK SIZES WITH CLEARANCES ABOVE CEILING. M.C. TO NOTIFY PROPER FOOD LION CONSTRUCTION MANAGER OF ANY CONFLICTS.
 - REFER TO SPECIFICATIONS, DIVISION 23 SECTIONS FOR ADDITIONAL MECHANICAL REQUIREMENTS.
 - MECHANICAL CONTRACTOR IS RESPONSIBLE FOR CONNECTING/RECONNECTING AHU DRAINS.
 - ALL EXHAUST HOODS SHALL BE INSTALLED 6'-8" ABOVE FINISHED FLOOR UNLESS NOTED OTHERWISE.
 - THE MECHANICAL CONTRACTOR SHALL BE RESPONSIBLE FOR ALL LABOR, MATERIAL AND WORKMANSHIP INSTALLED BY HIM UNDER THIS SECTION OF THE SPECIFICATIONS AND TO CORRECT ANY DEFICIENCIES ACQUIRED BY FOOD LION. THIS GUARANTEE SHALL EXTEND FOR A PERIOD OF NOT LESS THAN TWELVE (12) MONTHS FROM THE DATE OF THE FINAL PROJECT ACCEPTANCE BY FOOD LION SHARED SERVICES GROUP, L.L.C. AGAINST ANY DEFECTS OR SYSTEM FAILURE. ALL EQUIPMENT MANUFACTURERS' WARRANTIES WHICH EXTEND BEYOND THE FIRST TWELVE (12) MONTHS SHALL BE TRANSFERRED TO FOOD LION. HOWEVER, IT SHALL BE UNDERSTOOD BY ALL PARTIES CONCERNED THAT THE WARRANTIES PERTAIN ONLY TO FURNISHING OF MATERIAL BY THE MANUFACTURER AND SHALL NOT INCLUDE REPLACEMENT LABOR COSTS, UNLESS OTHERWISE DESCRIBED BY THE MANUFACTURER.
 - ENGINEER OF RECORD TO PROVIDE ALL SEISMIC REQUIREMENTS WHEN APPLICABLE.
 - ALL RECOVERED REFRIGERANTS SHOULD BE DOCUMENTED ON THE REFRIGERANT RECLAIM FORM AND SUBMITTED TO NICK CORDASO BY EMAIL (NICK.CORDASO@RETAILBUSINESSSERVICES.COM). RECOVERED REFRIGERANT IS TO BE LEFT AT THE STORE FOR THE FOOD LION MAINTENANCE TECH.

SENSOR LEGEND

⊕	THERMOSTAT	⊕RH	RELATIVE HUMIDITY	⊕P	AIR PRESSURE SWITCH
⊕T	TEMPERATURE	⊕SD	SMOKE DETECTOR	⊕AS	DISCHARGE AIR SENSOR

- ### NOTES
- THE E.C. IS RESPONSIBLE FOR PROVIDING COMMUNICATION CABLE FOR ALL REFRIGERATION CONTROLLERS AND THE HVAC CONTROLLER. THIS WILL BE IN THE FORM OF CAT5 CABLES FOR EACH CONTROLLER WITH STORES THAT HAVE E-2 CONTROLLERS OR 4-WIRE SHIELDED CABLE WITH STORES THAT HAVE EARLIER VERSIONS OF CPC CONTROLLERS. COORDINATE WITH SESSCO OR ENERGY TEAM MEMBER.
 - M.C. SHALL PROVIDE (1) PAIR OF CONTROL WIRES FROM EACH EXISTING AND OR NEW REFRIGERATION RACK TO THE EXISTING AND/OR NEW ECP FOR RECLAIM HEAT STAGING. EC SHALL PROVIDE REQUIRED CONDUIT. EMS PERSONNEL SHALL MAKE FINAL TERMINATION AND PANEL MODIFICATIONS AS REQUIRED.
 - NEW AND/OR EXISTING SENSORS, CONTROLS, ETC. WITH NEW WIRING AND CONNECTIONS TO ECP/EMCC AS APPLICABLE.

ABBREVIATIONS

AHU	AIR HANDLING UNIT	OA	OUTSIDE AIR
AFF	ABOVE FINISHED FLOOR	RTU	ROOFTOP UNIT (AIR CONDITIONING)

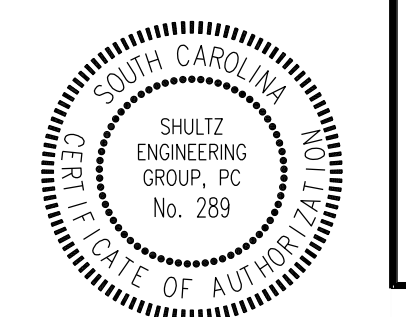
SYMBOL LEGEND

	NEW DUCTWORK - SIZE AS INDICATED FIRST DIMENSION IS FACE OF DUCT SHOWN ON PLAN.		EXISTING DUCTWORK RE-USED IN PLACE.
	ELECTRIC DUCT HEATER		MOTOR OPERATED DAMPER (NEW OR EXISTING AS INDICATED)
	VOLUME DAMPER		CONNECT TO EXISTING
	NEW SUPPLY DIFFUSER		RE-USED/RELOCATED EXISTING DIFFUSER
	AIR CURTAIN - CC (CONTROL CABINET)		UNDERCIRCUIT DOOR

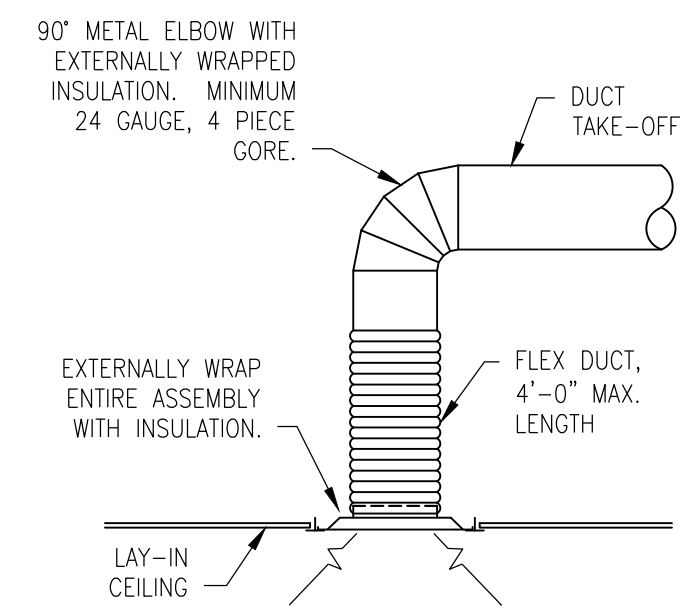
- ALL CONTROL WIRING PROVIDED BY THE MECHANICAL CONTRACTOR IS TO BE 14 GA. STRANDED. BX CABLE IS NOT ALLOWED. ALL SHIELDED CABLE IS TO BE 22 GA. OR LARGER. ALL WIRING SHALL BE IN CONDUIT PROVIDED BY ELECTRICIAN. SENSOR CABLE CANNOT BE IN THE SAME CONDUIT AS THE CONTROL WIRING. TERMINATIONS FOR THE MECHANICAL CONTROLS BY THE MECHANICAL CONTRACTOR.
- IN THE EVENT THAT FOOD LION UPGRADES THE FIRE ALARM SYSTEM, M.C. WILL BE RESPONSIBLE FOR REMOVING ALL OLD SMOKE DETECTORS. ONCE SYSTEM HAS BEEN SWITCHED OVER TO FIRE ALARM CONTACT, SESSCO WILL NOTIFY G.C. IN WRITING. M.C. WILL THEN REMOVE OLD DETECTORS. WIRING FROM DETECTORS IS TO BE REMOVED TO ASSOCIATED JUNCTION BOXES AND CAPPED OFF WITH WIRE NUTS. WIRING FROM ECP TERMINALS IS TO BE REMOVED TO WIRING TROUGH AND CAPPED OFF WITH WIRE NUTS.

- ### NOTE
- M.C. TO PERFORM THE FOLLOWING SEISMIC CHECKS ON EXISTING ROOFTOP AIR HANDLING UNITS (AHS) TO SESSCO:
- REPLACE ALL SUCTION AND LIQUID LINE FILTER/DRIERS AT THE START OF THE PROJECT. LEAVE OLD FILTERS IN THE SYSTEM FOR SESSCO INSPECTION.
 - ALL COILS TO BE WASHED COMPLETELY.
 - REPLACE BELTS FOR SUPPLY FAN.
 - REPLACE ALL DOOR GASKETS.
 - RE-SEAL ALL EXTERIOR SEAMS WITH ALUMINUM SILICONE.
 - REPLACE ALL H, L, AND OIL PRESSURE CONTROLS AND ANY ASSOCIATED HOSE CONNECTIONS.
 - SYSTEM REFRIGERANT CHARGE IS TO BE EVALUATED.
 - REPLACE ANY AND ALL FUSES AS NECESSARY.
 - REPLACE ANY BURNED WIRING AS NEEDED.
 - COMPRESSORS AND CONDENSER FANS ARE TO BE EVALUATED BY SYSTEM.
 - CONTRACTORS AND MOTOR STARTERS ARE TO BE EVALUATED.
 - CONDENSER FANS SHALL BE EVALUATED.
 - SUBMIT EVALUATIONS TO SESSCO SPECIALIST.
 - WHERE IT IS REQUIRED TO REPLACE, CONTRACTOR IS TO FURNISH ALL NEEDED PARTS.

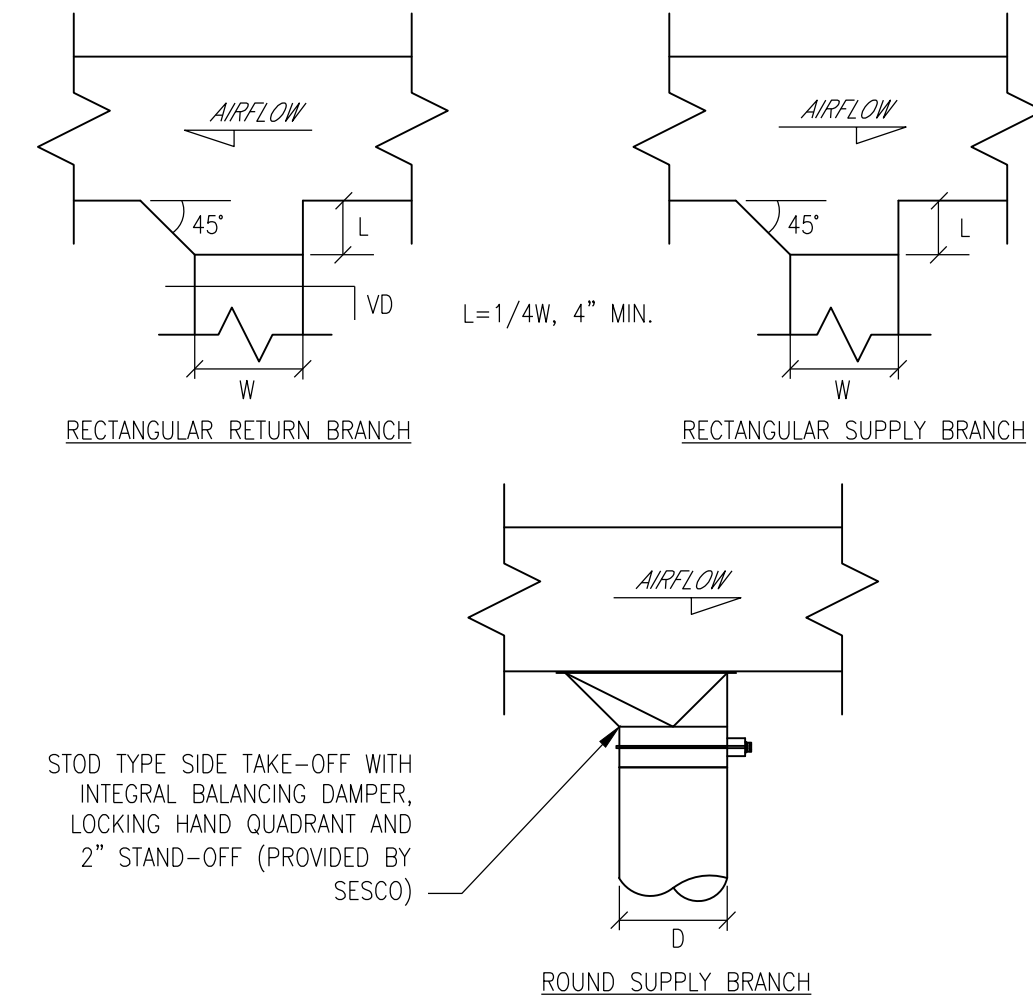
1 MECHANICAL FLOOR PLAN
M1.01/SCALE: 3/32" = 1'-0"



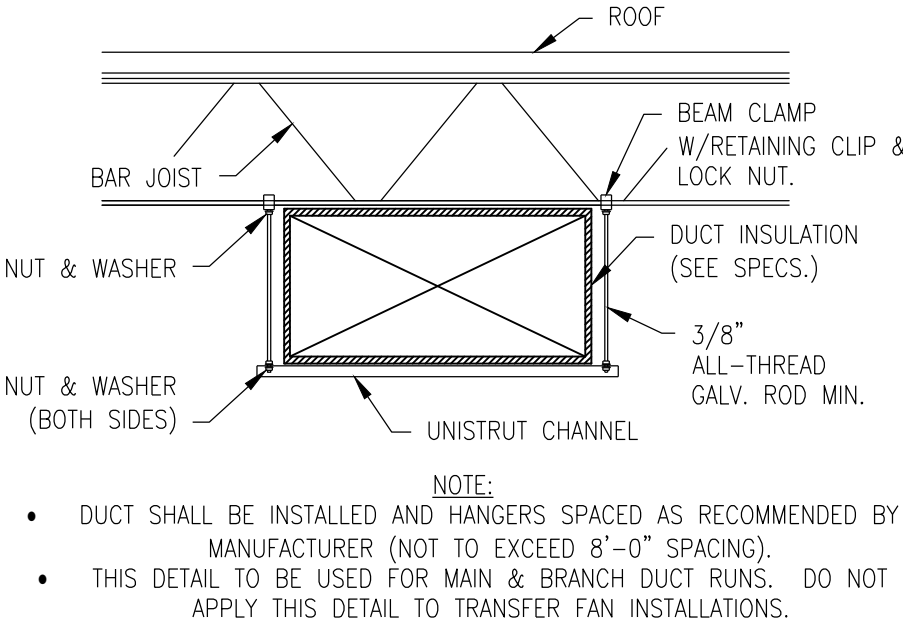
SHULTZ ENGINEERING GROUP
212 N. McDowell St.
Suite 204
Charlotte, NC 28204
(704) 334-7363
(704) 347-8093
www.shultzeng.com
SEC-22-019



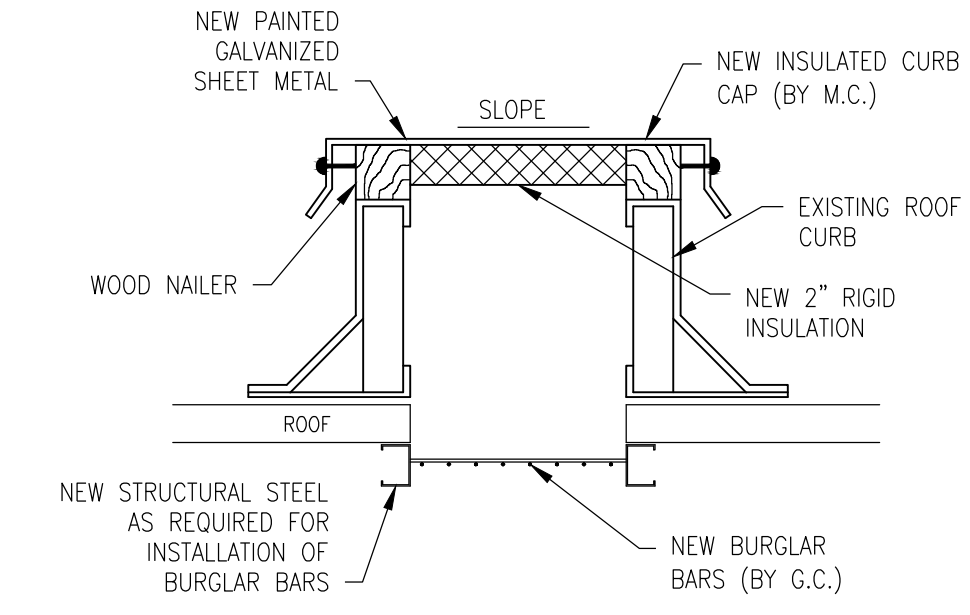
1 SUPPLY DIFFUSER INSTALLATION DETAIL
M5.01 / NOT TO SCALE



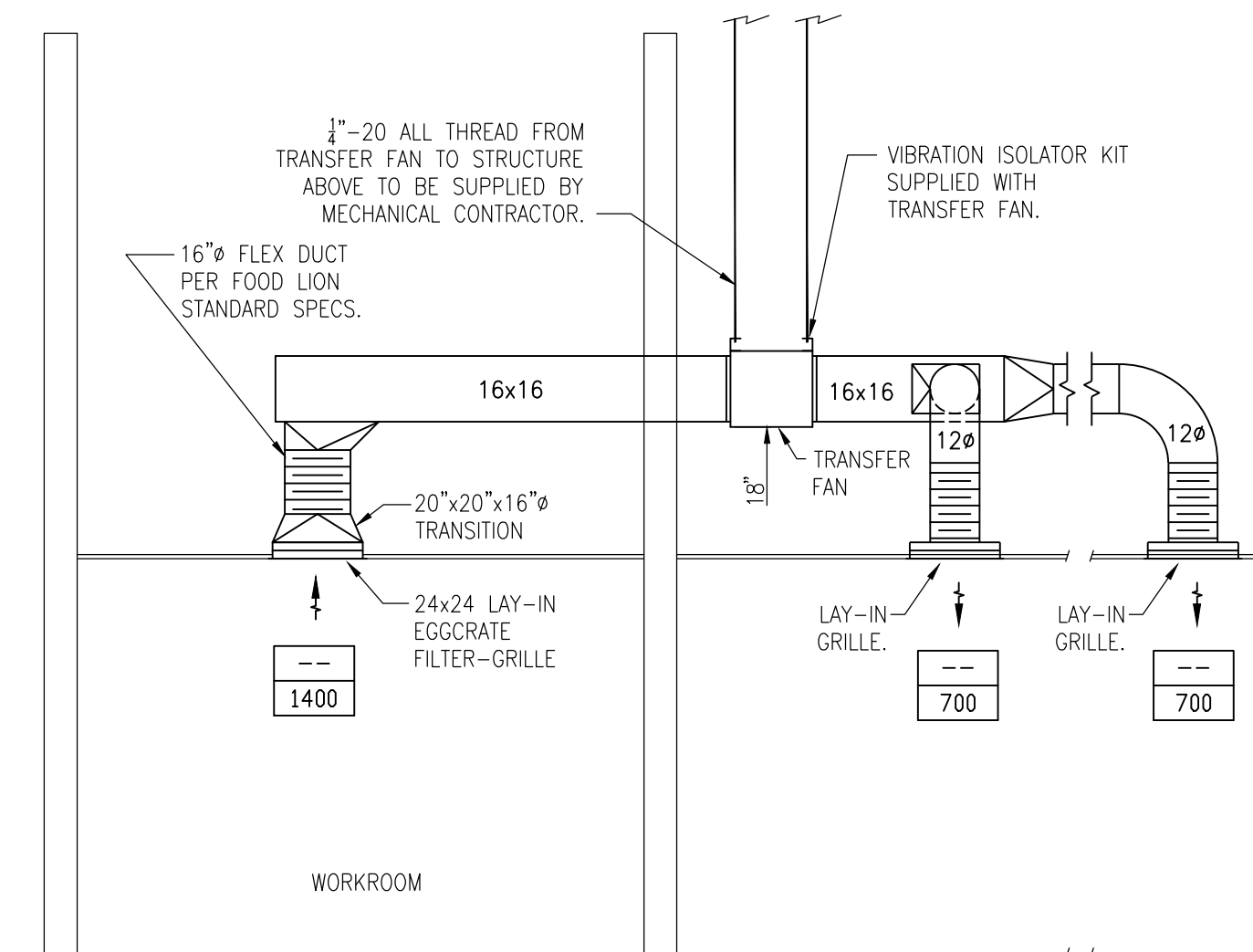
2 TYPICAL DUCT BRANCH TAKEOFF
M5.01 / NOT TO SCALE



3 RECTANGULAR DUCT HANGER DETAIL
M5.01 / NOT TO SCALE

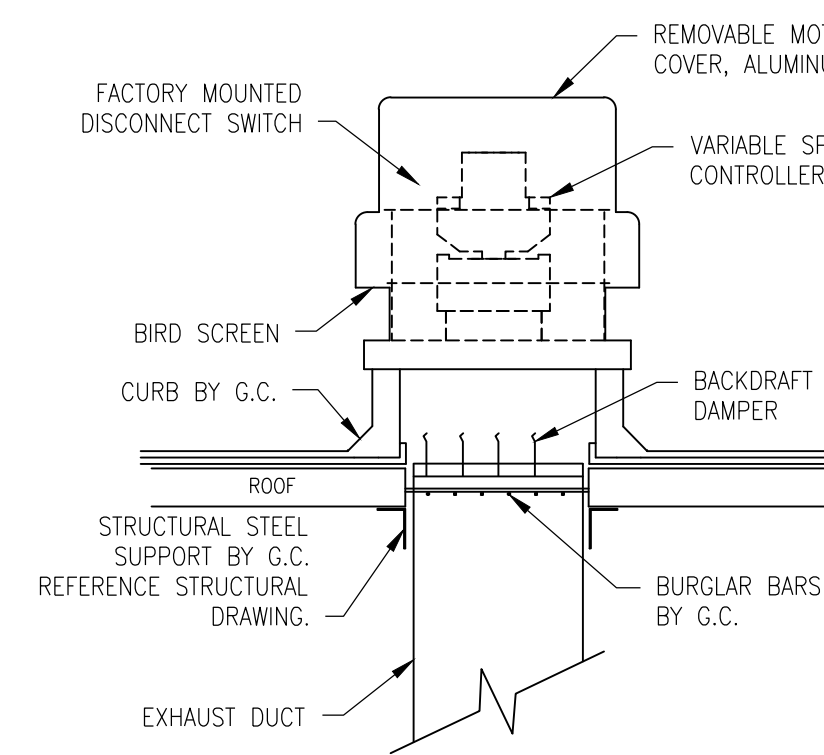


4 WEATHERPROOF INSULATED CURB CAP DETAIL
M5.01 / NOT TO SCALE

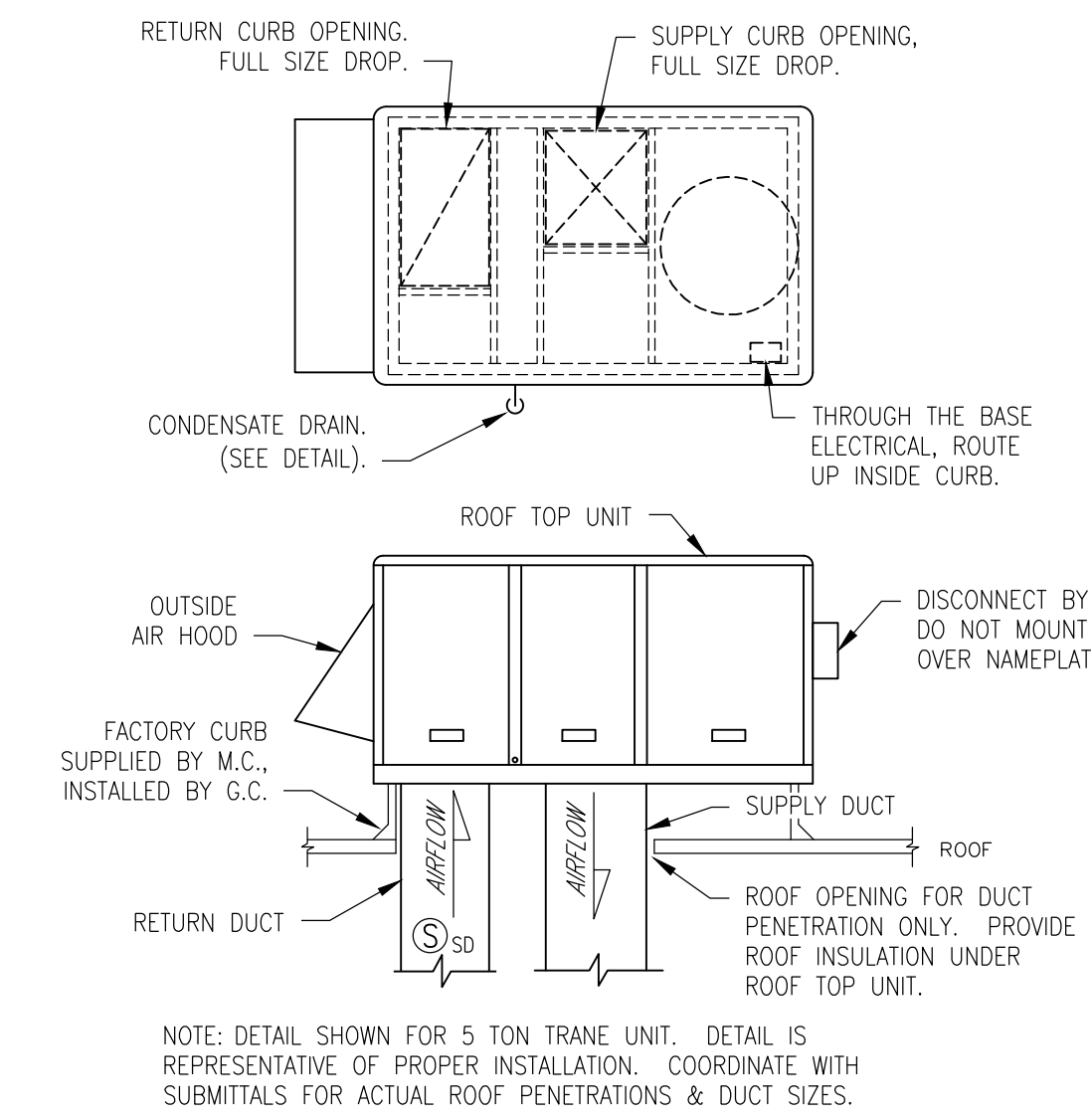


- NOTE:**
- TRANSFER FAN TO BE WIRED TO WORKROOM LIGHTING CIRCUIT. ENSURE THAT THE WORKROOM LIGHTING CIRCUIT IS ON EMS LOAD 1. IF THE CIRCUIT IS NOT ON LOAD 1, E.C. IS TO ADD IT AND A CONTRACTOR (IF NEEDED) TO LOAD 1.
 - TRANSFER FAN SHALL BE MOUNTED OUTSIDE OF THE WORKROOM OFFICE PERIMETER.
 - SUPPLY DIFFUSERS TO BE A MINIMUM OF 10'-0" AWAY FROM DOOR.
 - BOTTOM OF TRANSFER FAN TO BE MOUNTED A MAXIMUM OF 18" ABOVE CEILING GRID FOR SERVICE ACCESS.
 - SUPPLY & RETURN DUCT TO BE INTERNALLY LINED WITH 1/2" THK. ARMAFLEX AP ARMAFLEX OR EQUAL.

5 WORKROOM TRANSFER FAN INSTALLATION DETAIL
M5.01 / NOT TO SCALE



6 ROOF MOUNTED EXHAUST FAN INSTALLATION DETAIL
M5.01 / NOT TO SCALE

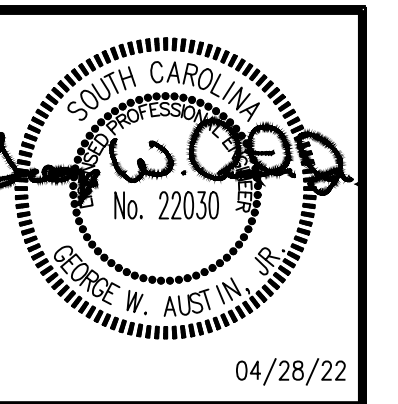


7 ROOF TOP UNIT INSTALLATION DETAIL
M5.01 / NOT TO SCALE

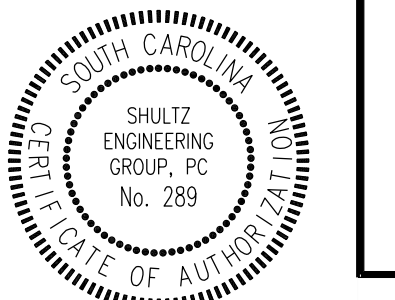
REVISIONS	No.	Description	Date

281 West Bute St.
Norfolk, VA 23510
757.627.2791

RFS Architects
ARCHITECTURE • PLANNING • INTERIORS



FOOD LION 2830
1095 BILBERT HWY
YORK, SC
MECHANICAL DETAILS



SHULTZ ENGINEERING GROUP
212 N. McDowell St
Suite 204
Charlotte, NC 28204
(704) 334-7363
(704) 347-8093
www.shultzeg.com
SEG - 22-019

DRAWING FILE NAME
2830M5.01_00
RFS JOB #
2022-013
DATE
04/28/22
M5.01
4 OF 5

C:\Users\jshultz\OneDrive - Shultz Engineering\Documents\2830M5.01_00 - 1.dwg (2/28/22) 2:41:10 PM 2/28/22 2:41:10 PM 2/28/22 2:41:10 PM

