



HVAC PLAN
1/4" = 1'-0"
NORTH

CODED NOTES

- 1 INSTALL EQUIPMENT PER MANUFACTURER'S INSTALLATION INSTRUCTION AND PER THE STRUCTURAL DETAILS.
- 2 PROVIDE SUPPLY DIFFUSER CONNECTION PER DETAIL 1/SHEET M-300.
- 3 REFER TO THE ARCHITECTURAL RCP FOR CEILING MOUNTED EQUIPMENT LOCATION. TYPICAL.
- 4 PROVIDE AUDIO/VISUAL REMOTE SMOKE DETECTOR ANNUNCIATOR WITH REMOTE KEY OPERATED RESET. WIRE A UNIT BACK TO EACH SMOKE DETECTOR. MOUNT UNIT 60" AFF. TYPICAL.
- 5 PROVIDE "LIGHTSTAT" THERMOSTATS WITH LOCKABLE COVERS (HONEYWELL CQ512A) FOR HVAC UNITS NOTED AT THIS LOCATION AT 48" AFF. COORDINATE WITH ELECTRICAL SWITCHING IN THE AREA AND EXTEND WIRING TO REMOTE TEMPERATURE SENSOR AND UNITS. LABEL EACH THERMOSTAT ACCORDINGLY. COORDINATE THERMOSTAT LOCATION WITH WALL-MOUNTED EQUIPMENT SO THAT THE THERMOSTATS ARE NOT BLOCKED BY SHELVING, COAT RACKS OR DOORS.
- 6 INSTALL THE TEMPERATURE SENSOR FOR THE HVAC EQUIPMENT NOTED AT THIS LOCATION AT 5'-0" AFF. COORDINATION LOCATION WITH EQUIPMENT AND WALL-MOUNTED FIXTURES AS REQUIRED SUCH THAT THE SENSOR IS NOT BLOCKED.
- 7 THE GENERAL CONTRACTOR SHALL PROVIDE A DUCT-MOUNTED SMOKE DETECTOR IN THE RETURN AIR STREAM. UPON DETECTION OF SMOKE, THE SUPPLY AIR FAN SHALL DE-ENERGIZE. COORDINATE ALL REQUIREMENTS WITH THE LANDLORD AND ALARM PROVIDER.
- 8 PROVIDE DUCTED TRANSFER GRILLE IN LOCATION AS SHOWN.
- 9 INSTALL THE TYPE II HOOD, HD-2 IN LOCATION SHOWN. SUPPORT PER THE MANUFACTURER'S INSTALLATION INSTRUCTIONS. INSTALL HOOD ACCORDING TO THE REQUIREMENTS OF ITS LISTING, THE BUILDING CODE, ALL NFPA REQUIREMENTS AND THE LOCAL AUTHORITY HAVING JURISDICTIONS REQUIREMENTS.
- 10 DUCTWORK UP/DOWN TO FROM THE ROOF. REFER TO THE ROOF PLAN ON SHEET M-101 FOR CONTINUATION

SYMBOLS & ABBREVIATIONS

HVAC SYMBOLS

- MITERED CORNER WITH TURNING VANES
- DUCTWORK INTERNAL FREE DIMENSIONS (WIDTH/HEIGHT)
- RECTANGULAR TO ROUND DUCT TRANSITION
- DUCT-MOUNTED SMOKE DETECTOR
- MOTOR-OPERATED DAMPER
- MANUAL VOLUME DAMPER
- GREASE DUCT CLEANOUT
- MITERED CORNER WITHOUT TURNING VANES
- CEILING DIFFUSER
- CEILING-MOUNTED RETURN OR EXHAUST REGISTER
- SUPPLY REGISTER
- RETURN REGISTER
- FLEXIBLE DUCT
- THERMOSTAT
- REMOTE TEMPERATURE SENSOR
- PLAN NOTE: SEE PLAN NOTES LISTED ON THE SAME SHEET FOR NOTE MEANING
- CONNECT TO EXISTING
- EQUIPMENT TAG: SEE EQUIPMENT SCHEDULE ON SHEET M-300 FOR EQUIPMENT INFORMATION
- AUDIO/VISUAL REMOTE SMOKE DETECTOR ANNUNCIATOR WITH REMOTE KEY OPERATED RESET
- TAG
NECK SIZE
AIRFLOW [CFM]

HVAC ABBREVIATIONS

- (E) EXISTING
- (R) RELOCATED
- AFB ABOVE FINISHED FLOOR
- AFG ABOVE FINISHED GRADE
- AHU AIR HANDLING UNIT
- BC BLOWER COIL
- CD CEILING DIFFUSER
- CU CONDENSING UNIT
- EF EXHAUST FAN
- ER EXHAUST REGISTER
- EXTG EXISTING
- GC GENERAL CONTRACTOR
- HES TENANT'S HVAC EQUIPMENT SUPPLIER
- KES TENANT'S KITCHEN EQUIPMENT SUPPLIER
- OBD BLADE DAMPER
- PL PLENUM
- RG RETURN GRILLE
- RTU ROOFTOP UNIT
- SD SLOT DIFFUSER
- SR SUPPLY REGISTER
- VSC VARIABLE SPEED CONTROL
- WSHP WATER SOURCE HEAT PUMP

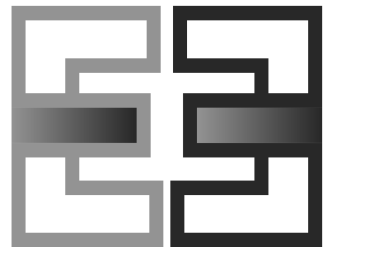


sweetgreen

3101 W. EXPOSITION BLVD.
LOS ANGELES, CALIFORNIA 90018

THESE DRAWINGS & SPECIFICATIONS ARE CONFIDENTIAL AND SHALL REMAIN THE SOLE PROPERTY OF SWEETGREEN CORPORATION. THEY SHALL NOT BE REPRODUCED OR USED IN ANY MANNER ON OTHER PROJECTS OR EXTENSIONS TO THIS PROJECT WITHOUT THE PRIOR WRITTEN CONSENT OF SWEETGREEN CORPORATION. THESE DRAWINGS & SPECIFICATIONS ARE INTENDED TO EXPRESS DESIGN INTENT FOR A PROTOTYPICAL SWEETGREEN STORE WHICH IS SUBJECT TO CHANGE AT ANY TIME AND MAY NOT REFLECT ACTUAL SITE CONDITIONS. NEITHER PARTY SHALL HAVE ANY OBLIGATION OR LIABILITY TO THE OTHER EXCEPT AS STATED ABOVE UNTIL A WRITTEN AGREEMENT IS FULLY EXECUTED.

ENGINEER OF RECORD:



EVERJ ENGINEERING, INC.
1509 BUCK TRAIL LANE
WORTHINGTON, OH 43085
240-319-0822
www.everjengineering.com
TX ENGINEERING FIRM: F-22980

STAMP:

**CONSTRUCTION
ISSUE SET**

12/05/2022

PROJECT INFORMATION:
QUARRY VILLAGE

PROJECT INFORMATION:
**340 E. BASSE RD. STE. 101
SAN ANTONIO, TX 78209**

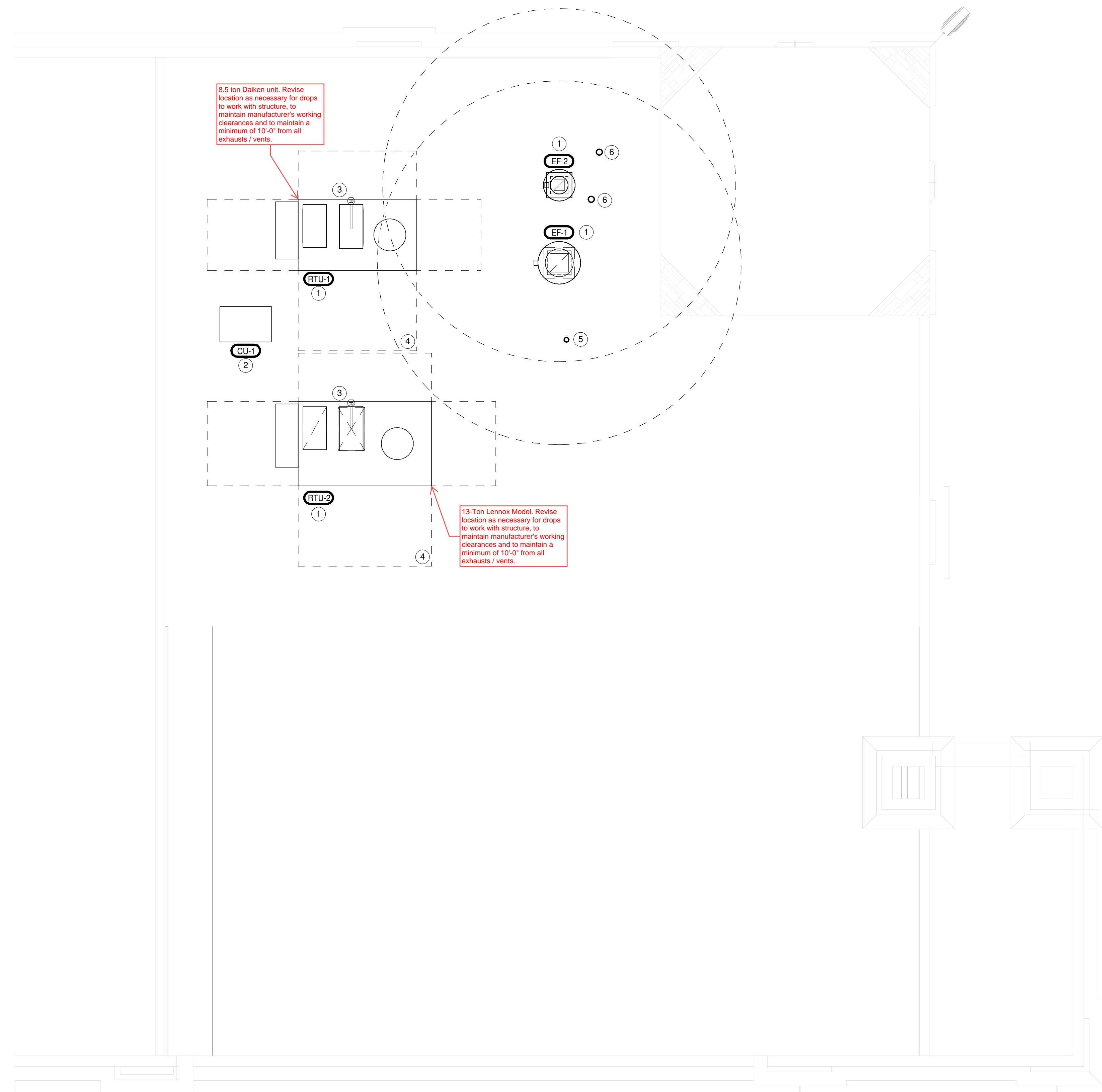
DRAWN BY: JAE
CHECKED BY: MK
PROJECT MANAGER: JAE
SG DESIGN MANAGER: LG
SG CONSTR. MANAGER: KZ
PROJECT NO: 220033
TEMPLATE VERSION: 05/20/2022

REVISIONS
REV. DATE DESCRIPTION

RECEIVED BY D4 CONSTRUCTION
DATE: 04/04/2023

HVAC PLAN

M-100



HVAC ROOF PLAN
 1
 1/4" = 1'-0"
 NORTH

GENERAL NOTES

- 1 INSTALL EQUIPMENT PER MANUFACTURER'S INSTALLATION INSTRUCTION AND PER THE STRUCTURAL DETAILS.
- 2 COORDINATE MOUNTING LOCATION FOR WALK-IN COOLER CONDENSING UNIT, CU-1 ON THE ROOF WITH THE KITCHEN EQUIPMENT SUPPLIER PRIOR TO ROUGH-IN. ENSURE ALL CLEARANCE REQUIREMENTS FOR THE UNIT ARE MAINTAINED THROUGH CONSTRUCTION. INSTALL THE CONDENSING UNIT ON THE ROOF PER THE MANUFACTURER'S INSTALLATION INSTRUCTIONS AND THE STRUCTURAL DETAILS. KITCHEN EQUIPMENT SUPPLIER SHALL PROVIDE LINESET, SPECIALTIES AND MAKE ALL FINAL CONNECTIONS BETWEEN THE CONDENSING UNIT AND EVAPORATOR COIL.
- 3 THE GENERAL CONTRACTOR SHALL FURNISH A REME HALO AIR PURIFICATION SYSTEM AND REQUIRED TRANSFORMER, PURCHASED THROUGH SWEETGREEN'S VENDOR (NATIONAL TAB) AND INSTALL SYSTEM IN THE SUPPLY AIR PLENUM OF THE ROOFTOP UNIT AND PER THE MANUFACTURER'S INSTALLATION INSTRUCTIONS. ADJUST AS REQUIRED FOR THE SUPPLY AIRFLOW.
- 4 MAINTAIN MANUFACTURER'S RECOMMENDED CLEARANCE ZONES. NO DUCTWORK, PIPING, CONDUIT OR OTHER SYSTEMS SHALL BE PERMITTED IN THIS AREA. COORDINATE WITH SITE CONDITIONS AND WORK OF OTHER TRADES AS REQUIRED, TYPICAL.
- 5 LOCATION OF THE 3" VENT TO ROOF. MAINTAIN 10'-0" OR GREATER SEPARATION BETWEEN PIPING AND ALL VENTILATION INTAKES AND OPERABLE OPENINGS INTO THE BUILDING.
- 6 LOCATION 4" WATER HEATER INTAKE/EXHAUST PIPING. MAINTAIN 10'-0" OR GREATER SEPARATION BETWEEN PIPING AND ALL VENTILATION INTAKES AND OPERABLE OPENINGS INTO THE BUILDING.

SYMBOLS & ABBREVIATIONS

HVAC SYMBOLS

- MITERED CORNER WITH TURNING VANES
- DUCTWORK INTERNAL FREE DIMENSIONS (WIDTH/HEIGHT)
- RECTANGULAR TO ROUND DUCT TRANSITION
- DUCT-MOUNTED SMOKE DETECTOR
- MOTOR-OPERATED DAMPER
- MANUAL VOLUME DAMPER
- GREASE DUCT CLEANOUT
- MITERED CORNER WITHOUT TURNING VANES
- CEILING DIFFUSER
- CEILING-MOUNTED RETURN OR EXHAUST REGISTER
- SUPPLY REGISTER
- RETURN REGISTER
- FLEXIBLE DUCT
- THERMOSTAT
- REMOTE TEMPERATURE SENSOR
- PLAN NOTE: SEE PLAN NOTES LISTED ON THE SAME SHEET FOR NOTE MEANING
- CONNECT TO EXISTING
- EQUIPMENT TAG: SEE EQUIPMENT SCHEDULE ON SHEET M-300 FOR EQUIPMENT INFORMATION
- AUDIO/VISUAL REMOTE SMOKE DETECTOR ANNUNCIATOR WITH REMOTE KEY OPERATED RESET
- TAG, NECK SIZE, AIRFLOW [CFM]

HVAC ABBREVIATIONS

- (E) EXISTING
- (R) RELOCATED
- AFF ABOVE FINISHED FLOOR
- AFG ABOVE FINISHED GRADE
- AHU AIR HANDLING UNIT
- BC BLOWER COIL
- CD CEILING DIFFUSER
- CU CONDENSING UNIT
- EF EXHAUST FAN
- ER EXHAUST REGISTER
- EXTG EXISTING
- GC GENERAL CONTRACTOR
- HES TENANT'S HVAC EQUIPMENT SUPPLIER
- KES TENANT'S KITCHEN EQUIPMENT SUPPLIER
- OBD BLADE DAMPER
- PL PLENUM
- RG RETURN GRILLE
- RTU ROOFTOP UNIT
- SD SLOT DIFFUSER
- SR SUPPLY REGISTER
- VSC VARIABLE SPEED CONTROL
- WSHP WATER SOURCE HEAT PUMP

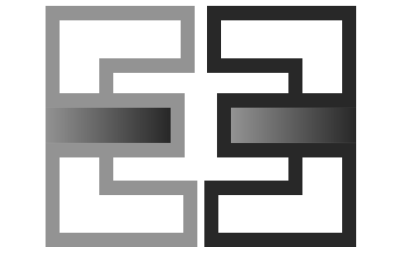


sweetgreen

3101 W. EXPOSITION BLVD.
 LOS ANGELES, CALIFORNIA 90018

THESE DRAWINGS & SPECIFICATIONS ARE CONFIDENTIAL AND SHALL REMAIN THE SOLE PROPERTY OF SWEETGREEN CORPORATION. THEY SHALL NOT BE REPRODUCED IN WHOLE OR IN PART, SHARED WITH THIRD PARTIES OR USED IN ANY MANNER ON OTHER PROJECTS OR EXTENSIONS TO THIS PROJECT WITHOUT THE PRIOR WRITTEN CONSENT OF SWEETGREEN CORPORATION. THESE DRAWINGS & SPECIFICATIONS ARE INTENDED TO EXPRESS DESIGN INTENT FOR A PROTOTYPICAL SWEETGREEN STORE WHICH IS SUBJECT TO CHANGE AT ANY TIME AND MAY NOT REFLECT ACTUAL SITE CONDITIONS. NEITHER PARTY SHALL HAVE ANY OBLIGATION OR LIABILITY TO THE OTHER EXCEPT AS STATED ABOVE UNTIL A WRITTEN AGREEMENT IS FULLY EXECUTED.

ENGINEER OF RECORD:



EVERJ ENGINEERING, INC.
 1509 BUCK TRAIL LANE
 WORTHINGTON, OH 43085
 240-319-0822
 www.everjengineering.com
 TX ENGINEERING FIRM: F-22980

STAMP:

**CONSTRUCTION
 ISSUE SET**

12/05/2022

PROJECT INFORMATION:
QUARRY VILLAGE

PROJECT INFORMATION:
**340 E. BASSE RD. STE. 101
 SAN ANTONIO, TX 78209**

DRAWN BY: JAE
 CHECKED BY: MK
 PROJECT MANAGER: JAE
 SG DESIGN MANAGER: LG
 SG CONSTR. MANAGER: KZ
 PROJECT NO: 220033
 TEMPLATE VERSION: 05/20/2022

REVISIONS
 REV. DATE DESCRIPTION

RECEIVED BY D4 CONSTRUCTION
 DATE: 04/04/2023

HVAC ROOF PLAN

M-101

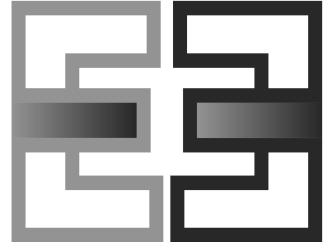


sweetgreen

3101 W. EXPOSITION BLVD.
LOS ANGELES, CALIFORNIA 90018

THESE DRAWINGS & SPECIFICATIONS ARE CONFIDENTIAL AND SHALL REMAIN THE SOLE PROPERTY OF SWEETGREEN CORPORATION. THEY SHALL NOT BE REPRODUCED IN WHOLE OR IN PART, SHARED WITH THIRD PARTIES OR USED IN ANY MANNER ON OTHER PROJECTS OR EXTENSIONS TO THIS PROJECT WITHOUT THE PRIOR WRITTEN CONSENT OF SWEETGREEN CORPORATION.

ENGINEER OF RECORD:



EVERJ ENGINEERING, INC.
1509 BUCK TRAIL LANE
WORTHINGTON, OH 43085
240-319-0822
www.everjengineering.com
TX ENGINEERING FIRM: F-22980

STAMP:

CONSTRUCTION
ISSUE SET

12/05/2022

PROJECT INFORMATION:
QUARRY VILLAGE
PROJECT INFORMATION:
340 E. BASSE RD. STE. 101
SAN ANTONIO, TX 78209

DRAWN BY: JAE
CHECKED BY: MK
PROJECT MANAGER: JAE
SG DESIGN MANAGER: LG
SG CONSTR. MANAGER: KZ
PROJECT NO: 220033
TEMPLATE VERSION: 05/20/2022

REVISIONS
REV. DATE DESCRIPTION
1 11/01/2022 CODE COMMENTS

RECEIVED BY D4 CONSTRUCTION
DATE: 04/04/2023

HVAC SCHEDULES

M-200

TRANE NATIONAL ACCOUNT - HVAC SYSTEM INFORMATION
EQUIPMENT SHALL BE PROCURED THROUGH A TRANE NATIONAL ACCOUNT. CONTACT THE TRANE NATIONAL ACCOUNT TEAM FOR HVAC SYSTEM INFORMATION.
DEREK VAN RIPER (714)227-9366
DANNY SCHEER (866)986-4822
DEREK.VANRIPER@TRANE.COM DAN.SCHEER@TRANETECHNOLOGIES.COM
-HVAC EQUIPMENT IS OWNER PURCHASED AND ASSIGNED TO THE INSTALLING CONTRACTOR.
-INSTALLING CONTRACTOR RESPONSIBLE TO: VERIFY UNIT CONFIGURATIONS, COORDINATE DELIVERY WITH TRANE, RECEIVE & UNLOAD EQUIPMENT, INSPECT EQUIPMENT, PROPERLY INSTALL EQUIPMENT INCLUDING FIELD INSTALLED ITEMS, STARTUP, AND 1ST YEAR LABOR WARRANTY & ADMINISTRATION.
-ANY CHANGES OR VARIATION TO THE EQUIPMENT PACKAGE THAT WOULD AFFECT THE HVAC EQUIPMENT PACKAGE SHOULD BE BROUGHT TO THE ATTENTION OF THE TRANE NATIONAL ACCOUNT TEAM AT THE TIME OF QUOTATION.

MATERIAL SCHEDULE
CATEGORY APPLICATION ALLOWABLE MATERIAL
DUCT EXPOSED, SUPPLY ROUND AS SHOWN. PAINTED TO MATCH ROOF DECK.
EXPOSED, RETURN ROUND AS SHOWN. PAINTED TO MATCH ROOF DECK.
CONCEALED, SUPPLY RECTANGULAR OR ROUND AS SHOWN. INSULATED.
CONCEALED, RETURN RECTANGULAR OR ROUND AS SHOWN. INSULATED.
CONCEALED, GEN. EXHAUST RECTANGULAR OR ROUND AS SHOWN. INSULATED.
PIPING CONDENSATE DRAINS SCHEDULE 40 PVC PIPE AND FITTINGS.

AIR BALANCE SCHEDULE
TAG SUPPLY AIRFLOW (CFM) RETURN AIRFLOW (CFM) OUTSIDE AIRFLOW (CFM) EXHAUST AIRFLOW (CFM) SUBTOTAL (CFM)
EF-1 0 0 0 1150 -1150
EF-2 0 0 0 150 -150
RTU-1 3150 2775 375 0 375
RTU-2 5000 3925 1075 0 1075
Net Pressurization (CFM) 150

EXHAUST SCHEDULE
PER THE 2018 INTERNATIONAL MECHANICAL CODE
CATEGORY AREA (SF) NUMBER OF FIXTURES AIR RATE (CFM / FIXTURE) EXHAUST REQUIRED (CFM) EXHAUST PROVIDED (CFM)
KITCHEN 1195.9 0 0.00 -0.70 0.0 -837.1 -1150.0
RESTROOMS 98.2 2 -50.00 0.00 -100.0 0.0 -100.0 -150.0
TOTAL -937.1 -1300.0

VENTILATION SCHEDULE
PER THE 2018 INTERNATIONAL MECHANICAL CODE
CATEGORY OCCUPANT DENSITY (# / 1000 SF) AREA (SF) OCCUPANCY BY AREA (PEOPLE) AIR RATE (CFM) VENTILATION REQUIRED (CFM) EFFECTIVE SS VENTILATION PROVIDED (CFM)
CORRIDOR 0 177.4 0 0.00 0.06 0.0 10.6 0.8 13.3 5.0
DINING ROOM 70 1192.5 84 7.50 0.18 630.0 214.7 0.8 1055.8 595.0
KITCHEN 20 1195.9 24 7.50 0.12 180.0 143.5 0.8 404.4 595.0
OFFICE 5 53.4 1 5.00 0.06 5.0 3.2 0.8 10.3 65.0
STORAGE AREAS 0 14.4 0 0.00 0.12 0.0 1.7 0.8 2.2 36.0
TOTAL 1485.9 1296.0

GRILLS, REGISTERS, AND DIFFUSERS SCHEDULE
TAG DESCRIPTION FACE SIZE MATERIAL FINISH MOUNTING SUPPLIER INSTALLER MANUFACTURER MODEL REMARKS
CD1 PERFORATED CEILING DIFFUSER 24" x 24" ALUMINUM WHITE LAY-IN GC GC TITUS PCS-AA PROVIDE INTEGRAL OBD
CD4 PERFORATED CEILING DIFFUSER 12" x 12" ALUMINUM WHITE GYPSUM BOARD GC GC TITUS PCS-AA PROVIDE INTEGRAL OBD
CD9 PLAQUE FACE DIFFUSER 12" x 12" ALUMINUM WHITE GYPSUM BOARD GC GC TITUS OMNI-AA PROVIDE WITH INTEGRAL OBD AND DIRECTIONAL BLOW CLIPS (WHEN INDICATED ON PLAN)
EG1 PLAQUE FACE DIFFUSER 12"x12" ALUMINUM WHITE GYPSUM BOARD GC GC TITUS OMNI-AA PROVIDE WITH INTEGRAL OBD AND DIRECTIONAL BLOW CLIPS (WHEN INDICATED ON PLAN)
RG2 PERFORATED CEILING RETURN ALUMINUM WHITE LAY-IN GC GC TITUS PAR-AA
RG3 PERFORATED CEILING RETURN 48" x 24" ALUMINUM WHITE GYPSUM BOARD GC GC TITUS PAR-AA
SR2 DOUBLE DIRECTIONAL SUPPLY REGISTER 24" x 12" STEEL WHITE SURFACE GC GC TITUS 300FL PROVIDE INTEGRAL OBD

RECIRCULATING HOOD SCHEDULE
TAG DESCRIPTION MAX COOKING TEMP. EXHAUST PLENUM AIRFLOW [CFM] APPROXIMATE WEIGHT [lbs] SUPPLIER INSTALLER ELECTRICAL DATA BASIS FOR DESIGN REMARKS
HD-1 VENTLESS CANOPY RECIRCULATING HOOD N/A 415 175 OWNER OWNER 170 W 120/1/60 RATIONAL 60.76.177

FAN SCHEDULE
TAG EXHAUST AIRFLOW (CFM) E.S.P. (IN. W.C.) DRIVE TYPE MOTOR POWER (HP) WEIGHT (LB) ELECTRICAL MCA (A) MOC (A) V/P/H SUPPLIER INSTALLER MANUFACTURER MODEL REMARKS
EF-1 1150 0.8 DIRECT 0.75 125 4.9 15 277/1/60 GC GC CAPTIVEAIRE DU85HFA FURNISHED WITH DISCONNECT, SPEED CONTROLLER, BACKDRAFT DAMPER AND 14" TALL ROOF CURB.
EF-2 150 0.6 DIRECT 0.25 100 3.7 15 120/1/60 GC GC CAPTIVEAIRE DR12HFA FURNISHED WITH DISCONNECT, SPEED CONTROLLER, BACKDRAFT DAMPER AND 14" TALL ROOF CURB.

TYPE II HOOD SCHEDULE
TAG DESCRIPTION HOOD CONSTRUCTION MAXIMUM COOKING TEMPERATURE (DEG. F) EXHAUST COLLARS AIRFLOW (CFM) DIAMETER (IN) PRESSURE DROP (IN. W.G.) WEIGHT (LB) SUPPLIER INSTALLER MANUFACTURER MODEL REMARKS
HD-2 TYPE II CANOPY HOOD 58" 60" 430 STAINLESS STEEL 700 1150 12" 0.09 200 GC GC CAPTIVEAIRE 6012 VHB

AIR CURTAIN SCHEDULE
TAG DESCRIPTION OPENING WIDTH MAX VELOCITY (FPM) AIRFLOW (CFM) ELECTRICAL MOC (A) MCA (A) V/P/H SUPPLIER INSTALLER MANUFACTURER MODEL REMARKS
AC-1 KITCHEN DOOR AIR DOOR 36" 3600 2118 1036 15 3.4 120/1/60 GC GC BERNER MAX1036A FURNISHED WITH DOOR-ACTIVATED SWITCH

CONDENSING UNIT SCHEDULE
TAG DESCRIPTION PAIRED WITH NOMINAL CAPACITY (TONS) NUMBER OF COMPRESSORS REFRIGERANT TYPE WEIGHT (LB) ELECTRICAL MOC (A) FLA V/P/H SUPPLIER INSTALLER MANUFACTURER MODEL REMARKS
CU-1 WALK-IN COOLER REMOTE CONDENSING UNIT N/A 0 1 R448A 260 25 16.3 208/1/60 KES KES BY KES BY KES FURNISHED WITH THE WALK-IN COOLER.

ROOFTOP UNIT SCHEDULE
TAG DESCRIPTION COOLING CAPACITY (TONS) EER AIRFLOW TOTAL (CFM) RETURN (CFM) OA (CFM) E.S.P. (IN. W.C.) NET TOTAL (MBH) NET SENSIBLE (MBH) EAT (DEG. F) DB WB OAT (DEG. F) HEATING INPUT (BTU/H) OUTPUT (BTU/H) EAT (DEG. F) NUMBER OF COMPRESSORS NUMBER OF CIRCUITS REFRIGERANT CHARGE (LBS) WEIGHT (LB) ELECTRICAL MOC (A) MCA (A) V/P/H SUPPLIER INSTALLER MANUFACTURER MODEL REMARKS
RTU-1 KITCHEN ROOFTOP UNIT 8.5 11.0 3150 2775 375 0.8 93.1 66.9 76.4 65.2 103.0 120,000 97,200 64.3 2 1 9.5 1300 30 21.0 480/3/60 OWNER GC TRANE YSJ-102 FURNISHED WITH COMPARATIVE ENTHALPY ECONOMIZER WITH FAULT DETECTION AND DIAGNOSTICS AND BAROMETRIC RELIEF, MULTI-SPEED FAN, HINGED PANELS, MERV 8 FILTER, HAIL GUARD, THROUGH-THE-BASE ELECTRICAL CONNECTION, DISCONNECT, UNPOWERED CONVENIENCE RECEPTACLE AND 14" TALL ROOF CURB.
RTU-2 DINING ROOM ROOFTOP UNIT 12.5 10.8 5000 3925 1075 0.8 142.1 110.8 78.4 65.4 103.0 200,000 162,000 60.2 2 1 11.4 1650 45 33.0 480/3/60 OWNER GC TRANE YSJ-150 FURNISHED WITH COMPARATIVE ENTHALPY ECONOMIZER WITH FAULT DETECTION AND DIAGNOSTICS AND BAROMETRIC RELIEF, MULTI-SPEED FAN, HINGED PANELS, MERV 8 FILTER, HAIL GUARD, THROUGH-THE-BASE ELECTRICAL CONNECTION, DISCONNECT AND 14" TALL ROOF CURB.

12/5/2022 4:21:33 PM

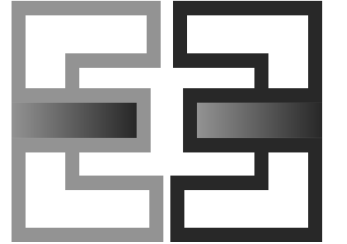


sweetgreen

3101 W. EXPOSITION BLVD.
LOS ANGELES, CALIFORNIA 90018

THESE DRAWINGS & SPECIFICATIONS ARE CONFIDENTIAL AND SHALL REMAIN THE SOLE PROPERTY OF SWEETGREEN CORPORATION. THEY SHALL NOT BE REPRODUCED (IN WHOLE OR IN PART), SHARED WITH THIRD PARTIES OR USED IN ANY MANNER ON OTHER PROJECTS OR EXTENSIONS TO THIS PROJECT WITHOUT THE PRIOR WRITTEN CONSENT OF SWEETGREEN CORPORATION. THESE DRAWINGS & SPECIFICATIONS ARE INTENDED TO EXPRESS DESIGN INTENT FOR A PROTOTYPICAL SWEETGREEN STORE WHICH IS SUBJECT TO CHANGE AT ANY TIME AND MAY NOT REFLECT ACTUAL SITE CONDITIONS. NEITHER PARTY SHALL HAVE ANY OBLIGATION OR LIABILITY TO THE OTHER EXCEPT AS STATED ABOVE UNTIL A WRITTEN AGREEMENT IS FULLY EXECUTED.

ENGINEER OF RECORD:



EVERJ ENGINEERING, INC.
1509 BUCK TRAIL LANE
WORTHINGTON, OH 43085
240-319-0822
www.everjengineering.com
TX ENGINEERING FIRM: F-22980

STAMP:

CONSTRUCTION
ISSUE SET

12/05/2022

PROJECT INFORMATION:
QUARRY VILLAGE
PROJECT INFORMATION:
**340 E. BASSE RD. STE. 101
SAN ANTONIO, TX 78209**

DRAWN BY: JAE
CHECKED BY: MK
PROJECT MANAGER: JAE
SG DESIGN MANAGER: LG
SG CONSTR. MANAGER: KZ
PROJECT NO: 220033
TEMPLATE VERSION: 05/20/2022

REVISIONS
REV. DATE DESCRIPTION
1 11/01/2022 CODE COMMENTS

RECEIVED BY D4 CONSTRUCTION
DATE: 04/04/2023

HVAC DETAILS

M-300



COMMISSIONING REQUIREMENTS

THE GENERAL CONTRACTOR SHALL PROVIDE COMMISSIONING OF THE FOLLOWING EQUIPMENT IN ACCORDANCE WITH SECTION 408 OF THE 2018 IECC:

- RTU-1
- RTU-2

EQUIPMENT FUNCTIONAL TESTING SHALL DEMONSTRATE THE OPERATION OF COMPONENTS, SYSTEMS, INTERFACING RELATIONSHIPS SUCH THAT THE OPERATION, FUNCTION AND MAINTENANCE SERVICEABILITY FOR THE COMMISSIONED SYSTEMS IS CONFIRMED. TESTS SHALL INCLUDE ALL MODES AND SEQUENCE OF OPERATION, INCLUDING FULL-LOAD, PART-LOAD AND THE FOLLOWING EMERGENCY CONDITIONS.

- ALL MODES DESCRIBED IN THE SEQUENCE OF OPERATIONS
- AUTOMATIC BACK-UP MODES AS DESCRIBED BY THE MANUFACTURER
- PERFORMANCE OF ALARMS.
- MODE OF OPERATION UPON A LOSS OF POWER AND RESTORATION OF POWER.

THE HVAC CONTROL SYSTEMS SHALL BE TESTED TO DOCUMENT THAT CONTROL DEVICES, COMPONENTS AND EQUIPMENT SYSTEMS ARE CALIBRATED AND ADJUSTED AND OPERATE IN ACCORDANCE WITH APPROVED PLANS AND SPECIFICATIONS.

AIR ECONOMIZERS SHALL UNDERGO FUNCTIONING TESTING TO DETERMINE THAT THEY OPERATE IN ACCORDANCE WITH THE MANUFACTURER'S SPECIFICATIONS.

THE GENERAL CONTRACTOR SHALL PROVIDE A PRELIMINARY COMMISSIONING REPORT INDICATING THE TEST PROCEDURES AND RESULTS. THIS REPORT SHALL INDICATE THE FOLLOWING:

- ITEMIZED LIST OF DEFICIENCIES FOUND DURING TESTING THAT HAVE NOT BEEN CORRECTED AT THE TIME OF THE REPORT PREPARATION.
- DEFERRED TESTS THAT CANNOT BE PERFORMED AT THE TIME OF THE REPORT BECAUSE OF CLIMATIC CONDITIONS.
- CLIMATIC CONDITIONS REQUIRED FOR THE PERFORMANCE OF DEFERRED TESTS.
- RESULTS OF FUNCTIONAL TESTS.
- FUNCTIONAL PERFORMANCE TEST PROCEDURES USED DURING THE COMMISSIONING PROCESS INCLUDING MEASURABLE CRITERIA FOR TEST ACCEPTANCE.

THE SPACE SHALL NOT BE CONSIDERED AS ACCEPTABLE FOR FINAL INSPECTION UNTIL THE CODE OFFICIAL HAS RECEIVED THE PRELIMINARY COMMISSIONING REPORT.

WITHIN 90 DAYS OF THE RECEIPT OF THE CERTIFICATE OF OCCUPANCY, THE GENERAL CONTRACTOR SHALL PROVIDE A FINAL COMMISSIONING REPORT AND SHALL INCLUDE THE FOLLOWING:

- RESULTS OF THE PERFORMANCE TESTS.
- DISPOSITION OF DEFICIENCIES FOUND DURING TESTING, INCLUDING THE DETAILS OF CORRECTIVE MEASURES USED OR PREPARED.
- FUNCTIONAL PERFORMANCE TEST PROCEDURES USED DURING THE COMMISSIONING PROCESS INCLUDING MEASURABLE CRITERIA FOR TEST ACCEPTANCE.
- DEFERRED TESTS THAT CANNOT BE PERFORMED AT THE TIME OF THE REPORT PREPARATION DUE TO CLIMATIC CONDITIONS ARE NOT REQUIRED AS PART OF THIS REPORT.

SEQUENCE OF OPERATIONS RTU-1 & RTU-2

OCCUPIED MODE:
FAN OPERATION/OUTSIDE AIR DAMPER: WHEN SCHEDULED BY THE THERMOSTAT TO BE IN OCCUPIED MODE, THE ROOFTOP UNIT FANS ARE TO START AND RUN CONTINUOUSLY AND THE OUTSIDE AIR DAMPERS SHALL MODULATE TO THE MINIMUM POSITION.

HEATING: ON A FALL IN SPACE TEMPERATURE BELOW THE SETPOINT OF 70 DEGREES (ADJUSTABLE) THE HEATING SHALL BE ENERGIZED TO MAINTAIN THE SETPOINT. ON A CONTINUED FALL IN SPACE TEMPERATURE, THE SECOND STAGE OF HEAT SHALL BE ENERGIZED.

COOLING: ON A RISE IN SPACE TEMPERATURE ABOVE THE SETPOINT OF 72 DEGREES (ADJUSTABLE), WHEN THE ENTHALPY OF THE OUTSIDE AIR IS FAVORABLE, THE OUTSIDE AIR DAMPER SHALL MODULATE OPEN UP TO 100% TO PROVIDE COOLING FOR THE SPACE. WHEN THE ENTHALPY OF THE OUTSIDE AIR IS NOT FAVORABLE, OR THERE IS A SUDDEN DEMAND FOR SPACE COOLING, THE OUTSIDE AIR DAMPER SHALL MODULATE TO THE MINIMUM POSITION AND THE COOLING SHALL BE ENERGIZED AS REQUIRED TO MAINTAIN THE SETPOINT.

UNOCCUPIED MODE:
FAN OPERATION/OUTSIDE AIR DAMPER: WHEN SCHEDULED BY THE THERMOSTAT TO BE IN UNOCCUPIED MODE, THE ROOFTOP UNIT FANS ARE TO BE OFF AND THE OUTSIDE AIR DAMPERS SHALL REMAIN CLOSED.

HEATING: ON A FALL IN SPACE TEMPERATURE BELOW THE SETPOINT OF 55 DEGREES (ADJUSTABLE) THE ROOFTOP UNIT FAN SHALL START AND THE HEATING SHALL BE ENERGIZED TO MAINTAIN THE SETPOINT. ON A CONTINUED FALL IN SPACE TEMPERATURE, THE SECOND STAGE OF HEAT SHALL BE ENERGIZED.

COOLING: ON A RISE IN SPACE TEMPERATURE ABOVE THE SETPOINT OF 85 DEGREES (ADJUSTABLE) THE ROOFTOP UNIT FAN SHALL START. WHEN THE ENTHALPY OF THE OUTSIDE AIR IS FAVORABLE, THE OUTSIDE AIR DAMPER SHALL MODULATE OPEN UP TO 100% TO PROVIDE COOLING FOR THE SPACE. WHEN THE ENTHALPY OF THE OUTSIDE AIR IS NOT FAVORABLE, OR THERE IS A SUDDEN DEMAND FOR SPACE COOLING, THE OUTSIDE AIR DAMPER SHALL REMAIN IN THE CLOSED POSITION AND THE COOLING SHALL BE ENERGIZED AS REQUIRED TO MAINTAIN THE SETPOINT.

EMERGENCY MODE:
FAN OPERATION/OUTSIDE AIR DAMPER: UPON A SIGNAL FROM THE SMOKE DETECTOR, THE FAN SHALL STOP AND THE OUTSIDE AIR DAMPER SHALL CLOSE.

SEQUENCE OF OPERATIONS EF-1 & EF-2

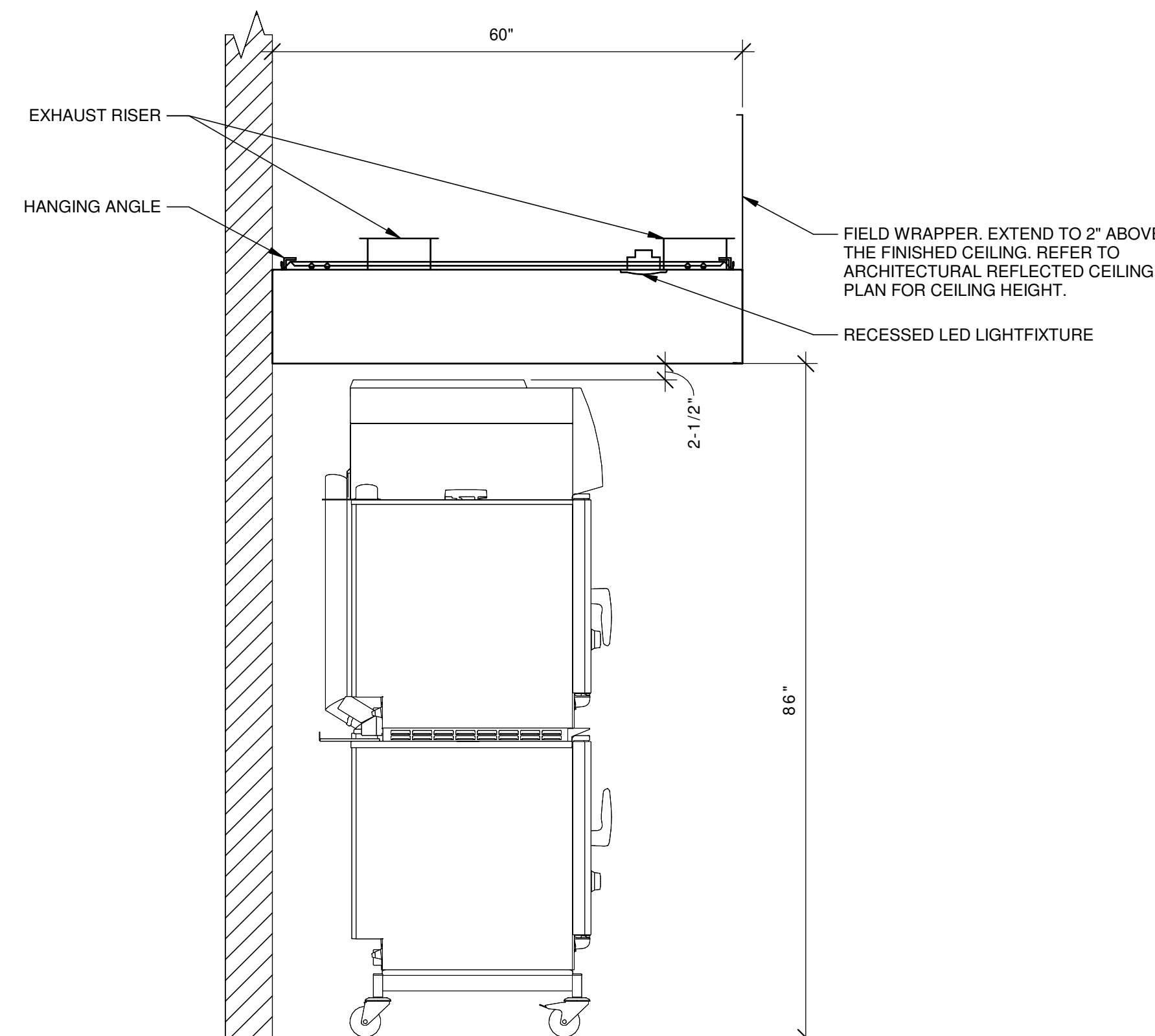
OCCUPIED MODE:
FAN OPERATION: WHEN SCHEDULED BY THE TIME CLOCK TO BE IN OCCUPIED MODE, THE EXHAUST FAN IS TO START AND RUN CONTINUOUSLY.

UNOCCUPIED MODE:
FAN OPERATION: WHEN SCHEDULED BY THE TIME CLOCK TO BE IN UNOCCUPIED MODE, THE EXHAUST FAN SHALL REMAIN OFF.

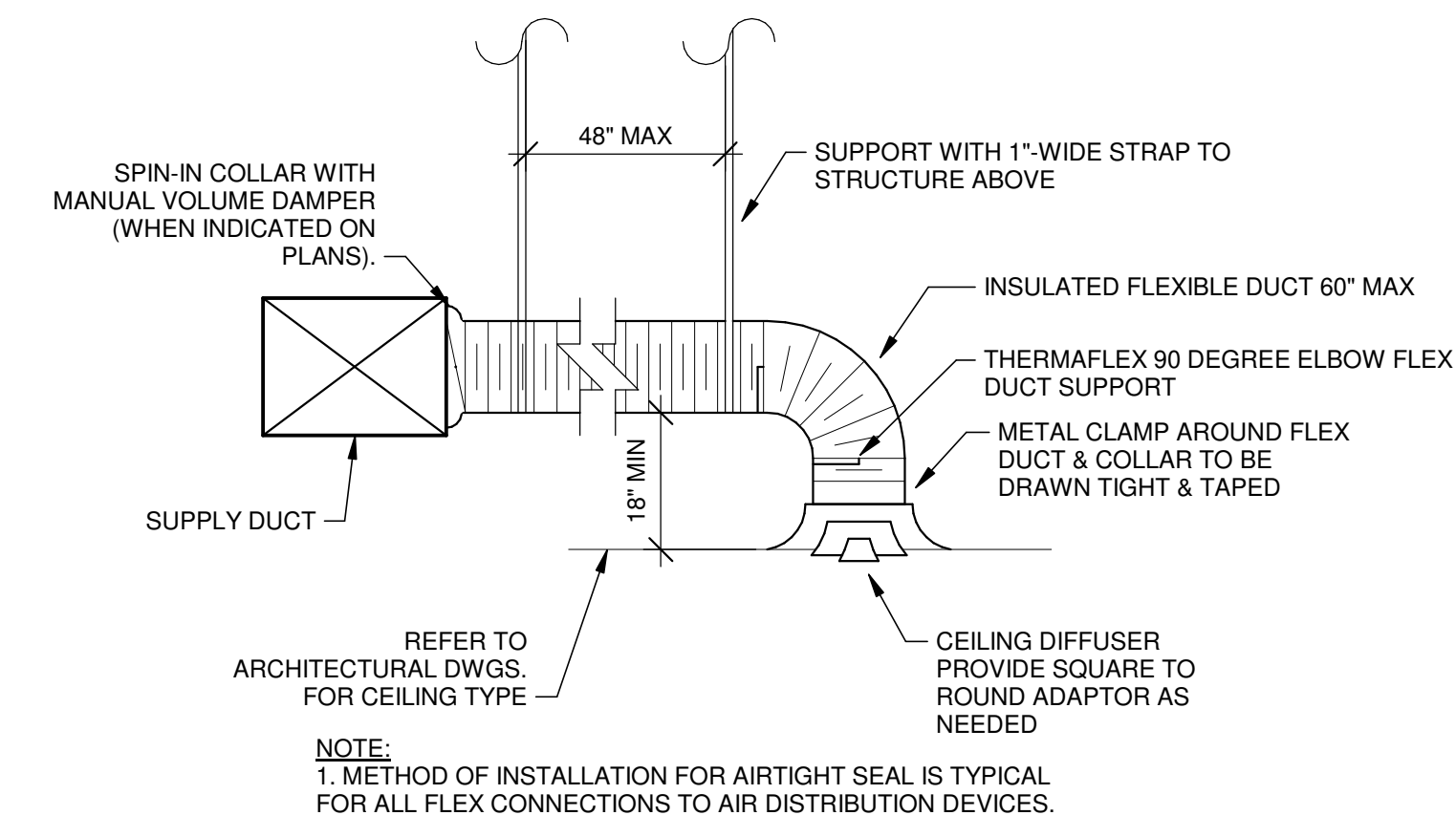
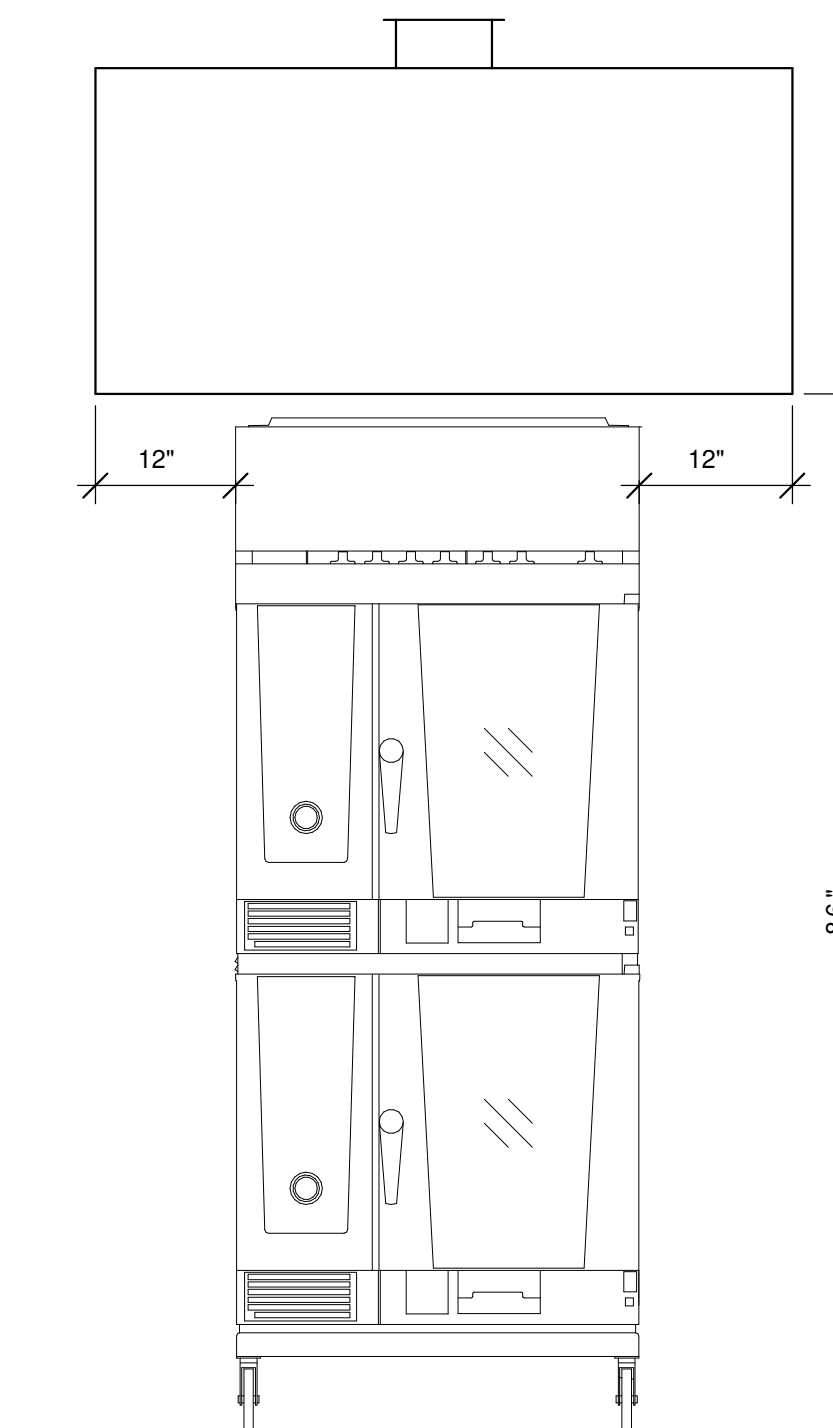
EMERGENCY MODE:
FAN OPERATION/OUTSIDE AIR DAMPER: UPON A SIGNAL FROM THE FIRE ALARM SYSTEM, THE FAN SHALL STOP.

3 SEQUENCE OF OPERATIONS

N.T.S.



2 HOOD ELEVATIONS
N.T.S.



1 DIFFUSER CONNECTION
N.T.S.

NOTE:
1. METHOD OF INSTALLATION FOR AIRTIGHT SEAL IS TYPICAL FOR ALL FLEX CONNECTIONS TO AIR DISTRIBUTION DEVICES.