



4635 Trueman Blvd  
Hilliard, OH 43026  
Voice: (614) 751-9610  
Fax: (614) 552-5240

## Shop Drawing Review

Project: 4222 – Margate, FL

Log Number:	<input type="text" value="2"/>	Return Date:	10.21.2022
Date Received:	<input type="text" value="10.20.2022"/>	<input checked="" type="checkbox"/> Approved	
Resubmittal	<input checked="" type="checkbox"/> Check if a Resubmittal	<input type="checkbox"/> Approved as Noted	
Date Previously Returned:	<input type="text"/>	<input type="checkbox"/> Revise and Resubmit	
		<input type="checkbox"/> Rejected	

Specification:

Approval is only for general conformance with the design concept and the information given in the Construction Documents. Corrections or comments made on the shop drawings during this review do not relieve the contractor from compliance with the requirements of the plans and specifications. Review of a specific item shall not include review of an assembly of which the item is a component. The Contractor is responsible for: dimensions to be confirmed and correlated at the jobsite; information that pertains solely to the fabrication processes or to the means, methods, techniques, sequences and procedures of construction; coordination of the Work with that of all other trades and performing all Work in a safe and satisfactory manner.

Contractor:

Submittal:

Comments:

By: Cliff Kigar

FOR QUESTIONS, CALL THE  
Highwoods Group  
REGION 40  
PHONE: (919) 875-0420  
EMAIL: reg40@captiveaire.com

**PATENT NUMBERS**

AC-PSP (UNITED STATES) - US PATENT 7963830 B2.  
AC-PSP WALL (CANADA) - CA PATENT 2820509.  
AC-PSP ISLAND (CANADA) - CA PATENT 2520330.

**HOOD INFORMATION - JOB#5476472**

HOOD NO	TAG	MODEL	MANUFACTURER	LENGTH	MAX COOKING TEMP	TYPE	APPLIANCE DUTY	DESIGN CFM/FT	TOTAL EXH CFM	EXHAUST PLENUM RISER(S)					MUA CFM	AC CFM	HOOD CONSTRUCTION	HOOD CONFIG		
										WIDTH	LENG	HEIGHT	DIA	CFM				VEL	SP	END TO END
1		5424 ND-2-ACPSP-F	CAPTIVEAIRE	14' 3"	600 DEG	I	HEAVY	225	3200	10"	15"	4"	1600	1536	-0.854"	1950	798	430 SS WHERE EXPOSED	ALONE	ALONE

**HOOD INFORMATION**

HOOD NO	TAG	FILTER(S)				LIGHT(S)				UTILITY CABINET(S)				FIRE SYSTEM PIPING	HOOD HANGING WEIGHT		
		TYPE	QTY	HEIGHT	LENGTH	EFFICIENCY @ 7 MICRONS	QTY	TYPE	WIRE GUARD	LOCATION	SIZE	FIRE SYSTEM TYPE	SIZE			ELECTRICAL MODEL #	SWITCHES QUANTITY
1		CAPTRATE SOLID FILTER	10	16"	16"	85% SEE FILTER SPEC	10	L55 SERIES E26	NO	RIGHT	12"x54"x24"	ANSUL R-102	3.0/3.0	SC-31110MA	1 LIGHT 1 FAN	YES	1113 LBS

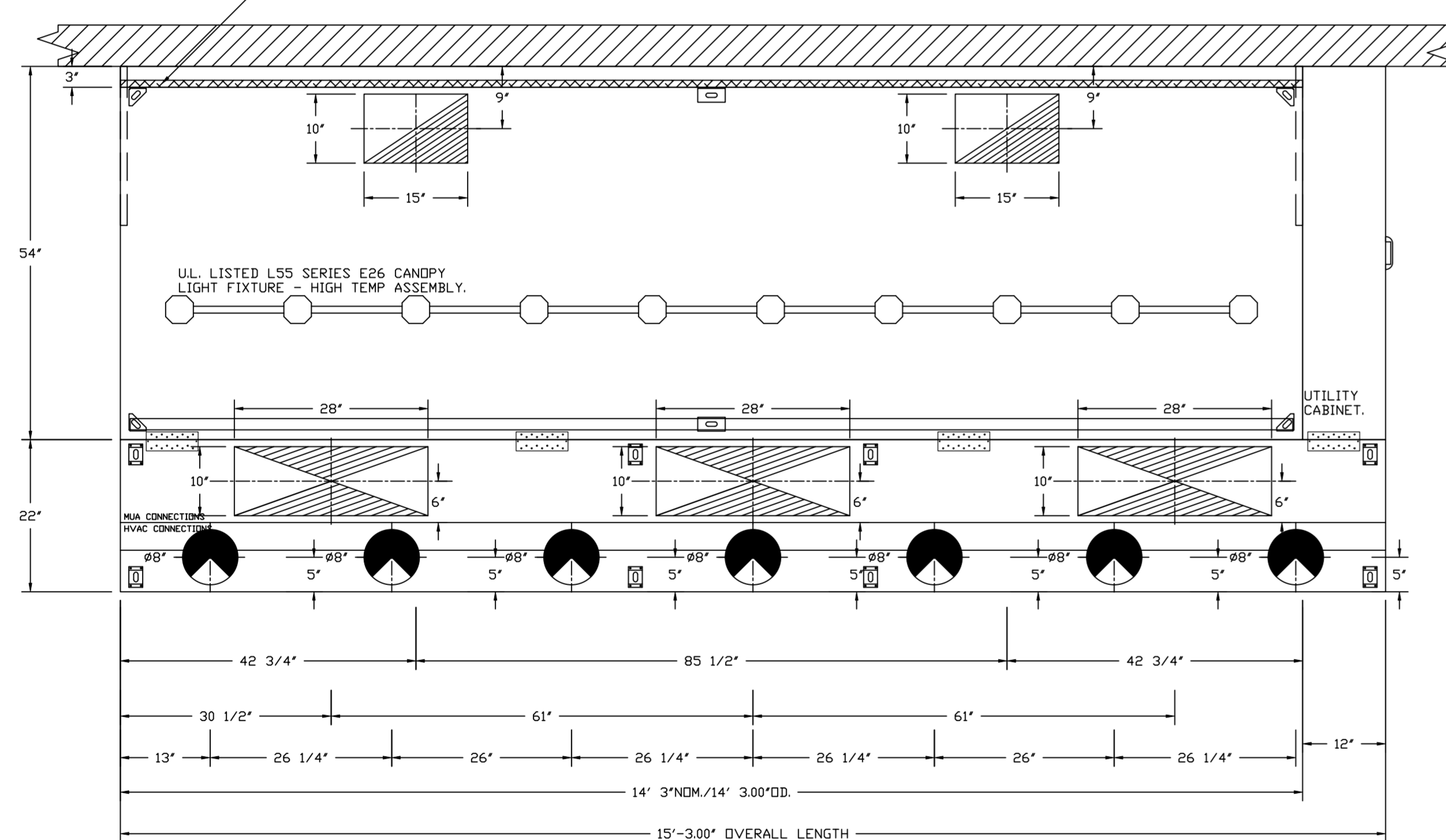
**HOOD OPTIONS**

HOOD NO	TAG	OPTION
1		FIELD WRAPPER 18.00' HIGH FRONT, LEFT, RIGHT. RIGHT QUARTER END PANEL 23' TOP WIDTH, 0' BOTTOM WIDTH, 23' HIGH 430 SS. LEFT QUARTER END PANEL 23' TOP WIDTH, 0' BOTTOM WIDTH, 23' HIGH 430 SS. INSULATION FOR BACK OF HOOD. FULL DIMENSION HANGING BRACKET - FRONT.

**PERFORATED SUPPLY PLENUM(S)**

HOOD NO	TAG	POS	LENGTH	WIDTH	HEIGHT	TYPE	RISER(S)				
							WIDTH	LENG	DIA	CFM	SP
1		Front	183'	22'	6'	MUA	10"	28"		650	0.166'
						MUA	10"	28"		650	0.166'
						MUA	10"	28"		650	0.166'
						AC		8"	114	0.041'	
						AC		8"	114	0.041'	
						AC		8"	114	0.041'	
						AC		8"	114	0.041'	
						AC		8"	114	0.041'	
						AC		8"	114	0.041'	
						AC		8"	114	0.041'	

1" LAYER OF INSULATION FACTORY INSTALLED IN INTERNAL BACK STANDOFF. MEETS 0 INCH REQUIREMENTS FOR CLEARANCE TO COMBUSTIBLE SURFACES.

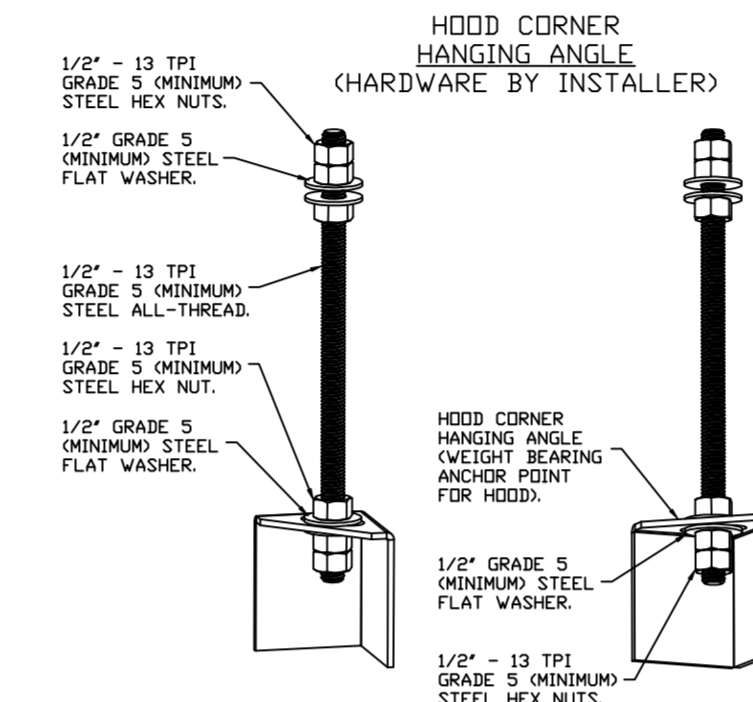


PLAN VIEW - HOOD #1

14' 3.00" LONG 5424ND-2-ACPSP-F

NOTE: ADDITIONAL HANGING ANGLES PROVIDED FOR HOODS 12' AND LONGER.

ACPSP SHIPS LOOSE FOR FIELD INSTALLATION



**ASSEMBLY INSTRUCTIONS**

HANGING ANGLE MUST BE SUPPORTED WITH 1/2" - 13 TPI GRADE 5 (MINIMUM) ALL-THREAD, SANDWICH HANGING ANGLES AND CEILING ANCHOR POINTS WITH 1/2" GRADE 5 (MINIMUM) STEEL FLAT WASHERS AND 1/2" - 13 TPI GRADE 5 (MINIMUM) HEX NUTS AS SHOWN. MUST USE DOUBLED HEX NUT CONFIGURATION BENEATH HOOD HANGING ANGLES AND ABOVE CEILING ANCHORS. MAINTAIN 1/4" OF EXPOSED THREADS BENEATH BOTTOM HEX NUT. TORQUE ALL HEX NUTS TO 57 FT-LBS.

**SPECIFICATION: CAPTRATE® GREASE-STOP® SOLID FILTER**

THE CAPTRATE GREASE-STOP SOLID FILTER IS A SINGLE-STAGE FILTER FEATURING A UNIQUE S-BAFFLE DESIGN IN CONJUNCTION WITH A SLOTTED REAR BAFFLE DESIGN, TO DELIVER EXCEPTIONAL FILTRATION EFFICIENCY.

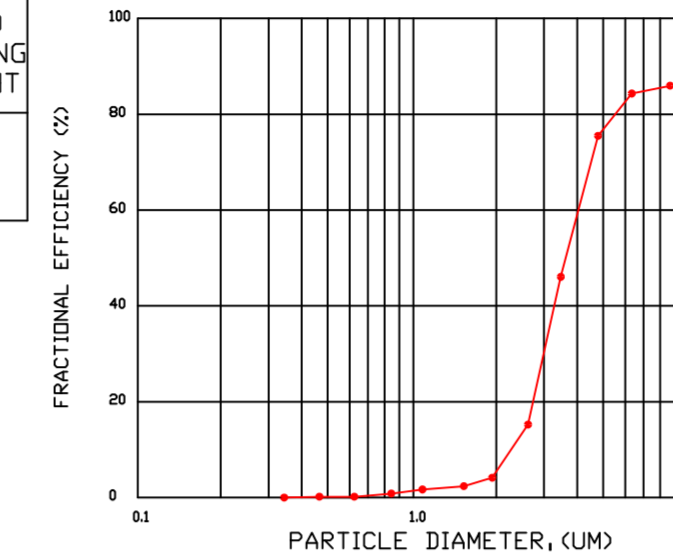
FILTER IS STAINLESS STEEL CONSTRUCTION, AND SIZED TO FIT INTO STANDARD 2-INCH DEEP HOOD CHANNEL(S).

UNITS SHALL INCLUDE STAINLESS STEEL HANDLES AND A FASTENING DEVICE TO SECURE THE TWO COMPONENTS WHEN ASSEMBLED.

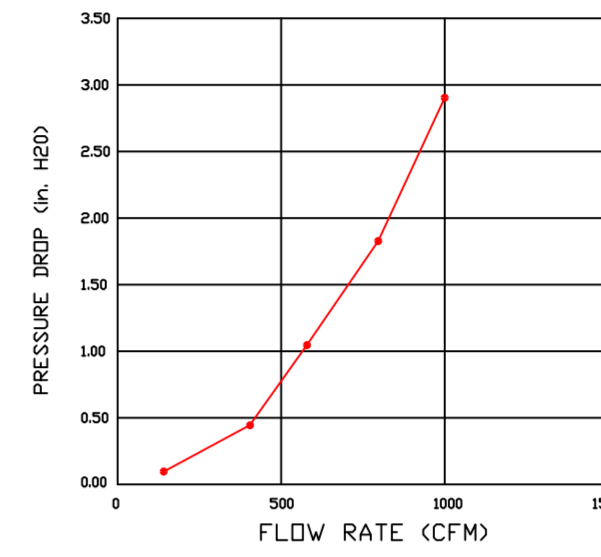
GREASE EXTRACTION EFFICIENCY PERFORMANCE SHALL REMOVE AT LEAST 75% OF GREASE PARTICLES FIVE MICRONS IN SIZE, AND 85% GREASE PARTICLES SEVEN MICRONS IN SIZE AND LARGER, WITH A CORRESPONDING PRESSURE DROP NOT TO EXCEED 1.0 INCHES OF WATER GAUGE.

THE CAPTRATE GREASE-STOP SOLID WAS TESTED TO ASTM STANDARD ASTM F2519-05, MANUFACTURER APPROVED FOR USE IN SOLID FUEL APPLICATIONS AS A SPARK ARRESTER.

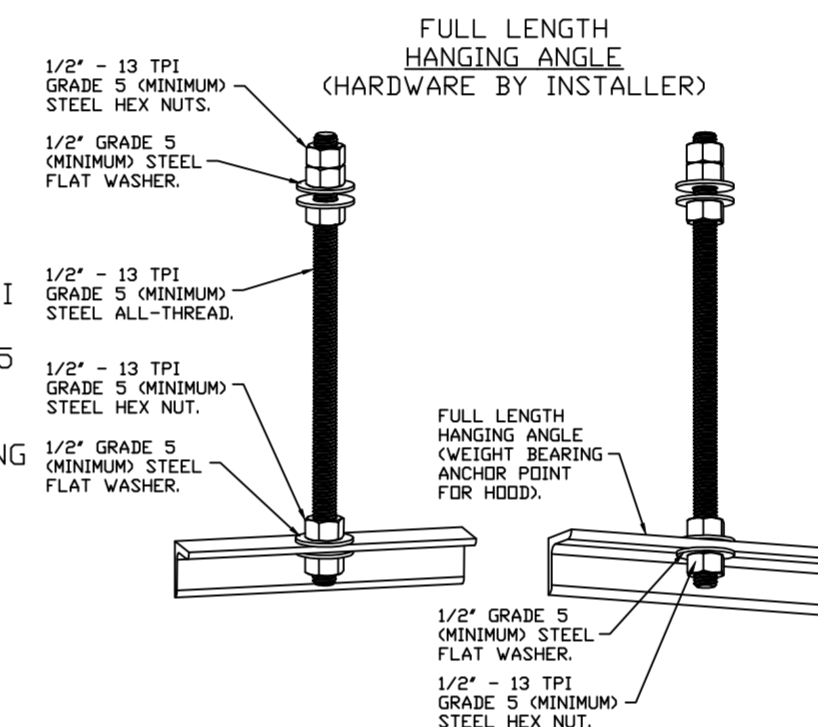
**EFFICIENCY VS. PARTICLE DIAMETER**



**PRESSURE DROP VS. FLOW RATE**

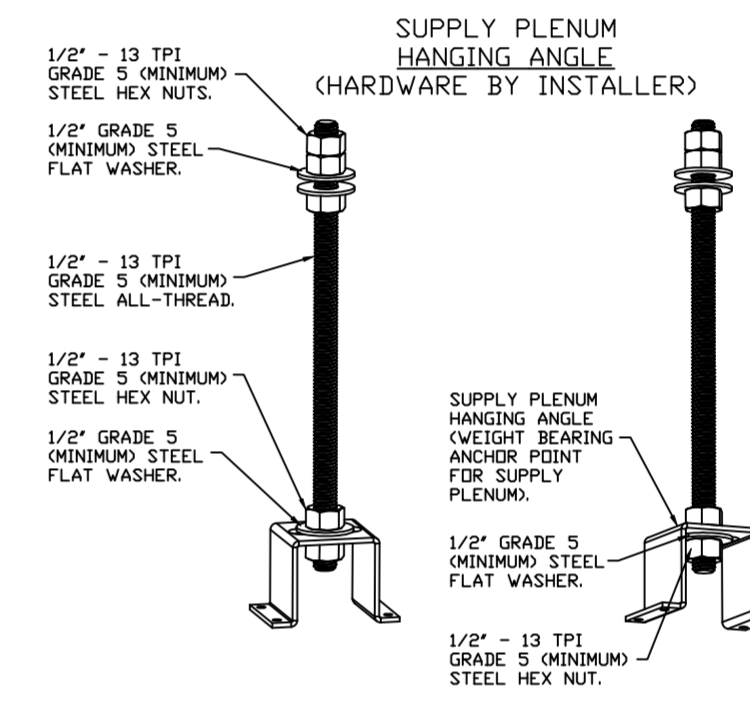


CAPTRATE FILTERS ARE BUILT IN COMPLIANCE WITH:  
NFPA #96.  
NSF STANDARD #2.  
UL STANDARD #1046.  
INT. MECH. CODE (IMC).  
ULC-S649.



**ASSEMBLY INSTRUCTIONS**

HANGING ANGLE MUST BE SUPPORTED WITH 1/2" - 13 TPI GRADE 5 (MINIMUM) ALL-THREAD, SANDWICH HANGING ANGLES AND CEILING ANCHOR POINTS WITH 1/2" GRADE 5 (MINIMUM) STEEL FLAT WASHERS AND 1/2" - 13 TPI GRADE 5 (MINIMUM) HEX NUTS AS SHOWN. MUST USE DOUBLED HEX NUT CONFIGURATION ABOVE CEILING ANCHORS. SINGLE HEX NUT BENEATH HANGING ANGLE IS ACCEPTABLE FOR FULL LENGTH HANGING ANGLES. MAINTAIN 1/4" OF EXPOSED THREADS BENEATH BOTTOM HEX NUT. TORQUE ALL HEX NUTS TO 57 FT-LBS.



**ASSEMBLY INSTRUCTIONS**

HANGING ANGLE MUST BE SUPPORTED WITH 1/2" - 13 TPI GRADE 5 (MINIMUM) ALL-THREAD, SANDWICH HANGING ANGLES AND CEILING ANCHOR POINTS WITH 1/2" GRADE 5 (MINIMUM) STEEL FLAT WASHERS AND 1/2" - 13 TPI GRADE 5 (MINIMUM) HEX NUTS AS SHOWN. MUST USE DOUBLED HEX NUT CONFIGURATION ABOVE CEILING ANCHORS. SINGLE HEX NUT BENEATH HANGING ANGLE IS ACCEPTABLE FOR PSP HANGING ANGLES. MAINTAIN 1/4" OF EXPOSED THREADS BENEATH BOTTOM HEX NUT. TORQUE ALL HEX NUTS TO 57 FT-LBS.

**SHOP DRAWING REVIEW**

Reviewed for compliance with the architectural drawings

- No Exception Taken
- Furnish as Noted
- Revise and Resubmit
- Submit Specified Item
- Rejected

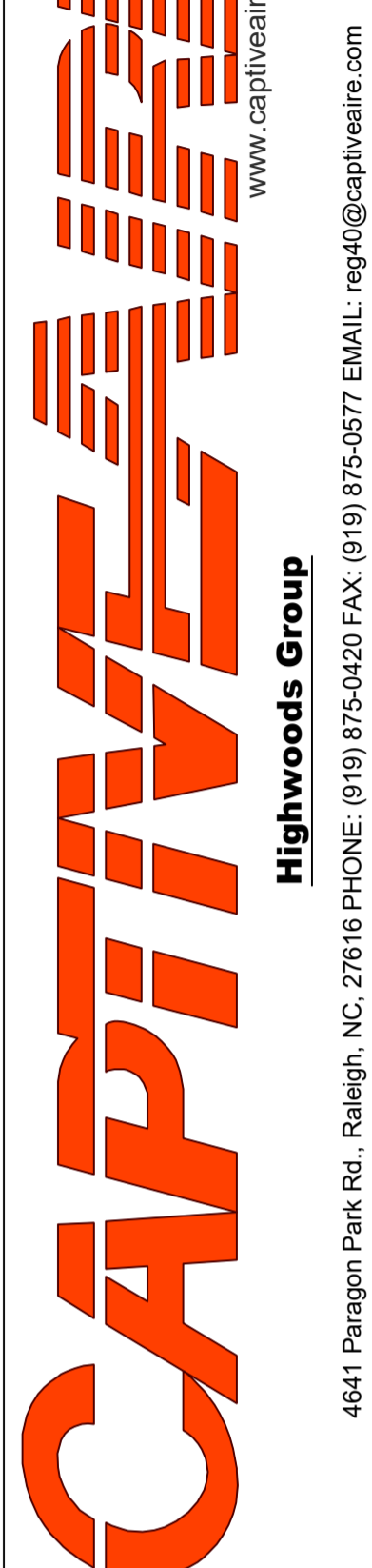
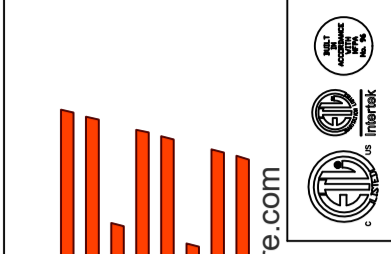
This review is only for compliance with the design intent of the project and compliance with information given within the Contract Documents. Corrections or comments shall not relieve the contractor from compliance with the Contract Documents nor allow departures from them. The contractor remains solely responsible for verifying all dimensions, correlating quantities, selecting fabrication processes and construction techniques, coordinating the work of all trades, and insuring that all work is performed safely and in a complete and workmanlike manner.

**Stefano De Luca & Associates, Inc**  
**Architecture & Design**  
AR0014815

By: A. Linhares Date: 10.20.22  
Project #: 2114 Submittal #: 03.2

**REVISIONS**

DESCRIPTION	DATE



CHIPOTLE MARGATE #4222  
POMPANO BEACH, FL, 33063

DATE: 10/19/2022

DWG.#: 5476472

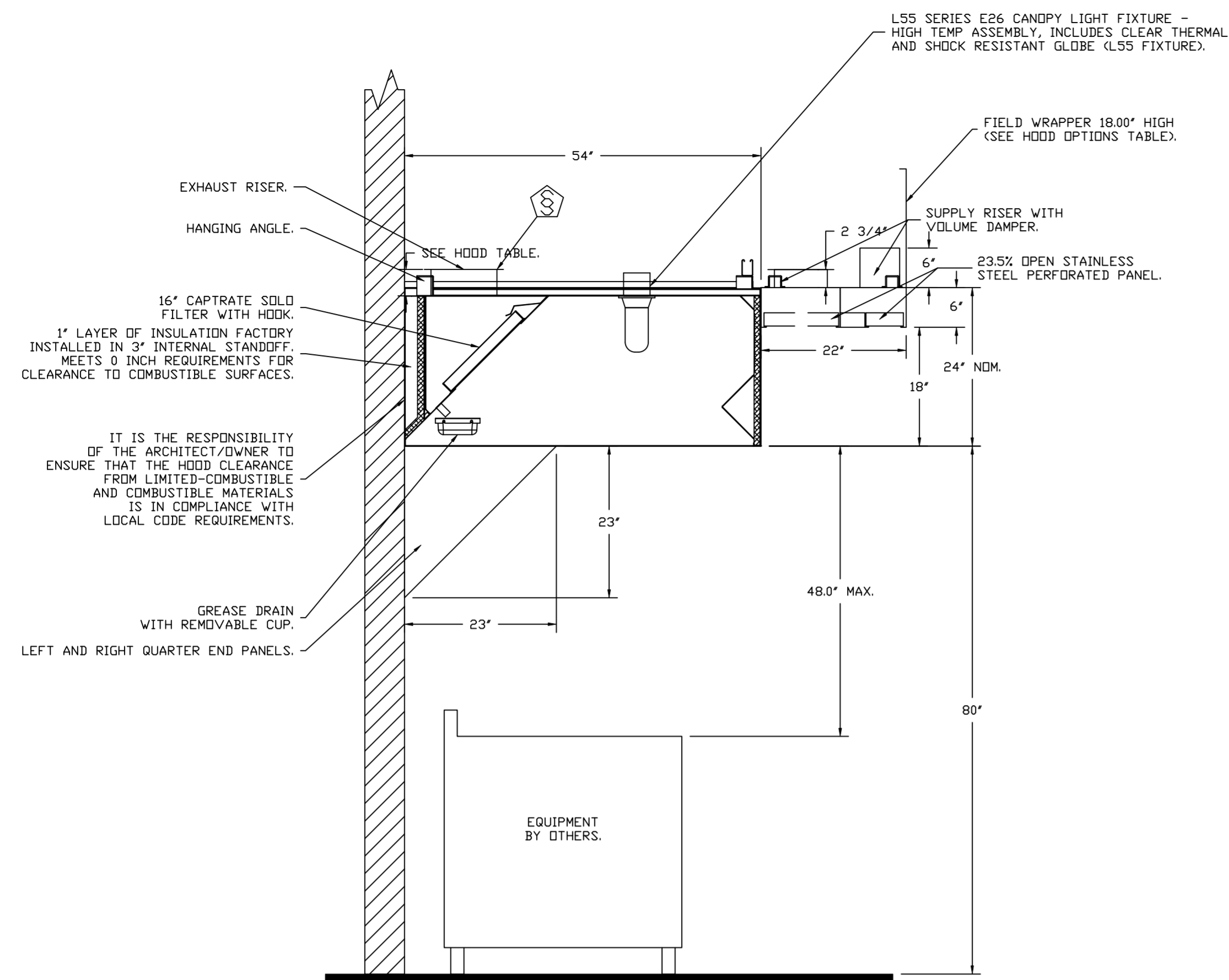
DRAWN BY: JMB-40

SCALE: 3/4" = 1'-0"

MASTER DRAWING

SHEET NO. 1

Highwoods Group  
4641 Paragon Park Rd., Raleigh, NC, 27616 PHONE: (919) 875-0420 FAX: (919) 875-0577 EMAIL: reg40@captiveaire.com



SECTION VIEW - MODEL 5424ND-2-ACPSP-F  
HOOD - #1

**FIRE SYSTEM INFORMATION - JOB#5476472**

FIRE SYSTEM NO	TAG	TYPE	SIZE	FLOW POINTS	INSTALLATION	
					SYSTEM	LOCATION ON HOOD
1		ANSUL R102	3.0/3.0	13	FIRE CABINET RIGHT	RIGHT, HOOD 1

**GAS VALVE(S)**

FIRE SYSTEM NO	TAG	TYPE	SIZE	SUPPLIED BY
1		MECHANICAL	1.500	CAPTIVEAIRE SYSTEMS

**REVISIONS**

DESCRIPTION	DATE

**CAPTIVEAIRE**  
Highwoods Group  
www.captiveaire.com  
4641 Paragon Park Rd., Raleigh, NC 27616 PHONE: (919) 875-0420 FAX: (919) 875-0577 EMAIL: reg@captivaire.com

CHIPOTLE MARGATE #4222  
POMPANO BEACH, FL, 33063

DATE: 10/19/2022  
DWG.#: 5476472  
DRAWN BY: JMB-40  
SCALE: 3/4" = 1'-0"  
MASTER DRAWING

SHEET NO.  
2

**EXHAUST FAN INFORMATION - JOB#5476472**

FAN UNIT NO	TAG	QTY	FAN UNIT MODEL #	MANUFACTURER	CFM	ESP	RPM	MOTOR ENCL	HP	BHP	PHASE	VOLT	FLA	DISCHARGE VELOCITY	WEIGHT (LBS)	SONES
1	EF-1	1	DU240HFA	CAPTIVEAIRE	3200	1.200	774	DDP, PREMIUM	3.000	1.2990	3	208	10.2	727 FPM	304	12.2
2	EF-2	1	DR12HFA	CAPTIVEAIRE	150	0.600	1282	TEAD-ECM	0.250	0.0940	1	115	2.9		51	6.1

**MUA FAN INFORMATION - JOB#5476472**

FAN UNIT NO	TAG	QTY	FAN UNIT MODEL #	BLOWER	HOUSING	MIN CFM	DESIGN CFM	ESP	RPM	MOTOR ENCL	HP	BHP	PHASE	VOLT	FLA	MCA	MOCP	WEIGHT (LBS)	SONES
3	MAU-1	1	A1-15D	15MF-1-MDD	A1	-	1950	0.500	1824	DDP, PREMIUM	3.000	0.9770	3	208	8.6	10.8A	15A	280	23.6

**FAN OPTIONS**

FAN UNIT NO	TAG	QTY	DESCRIPTION
1	EF-1	1	GREASE BOX
		1	REMOVE HINGE KIT LABEL FROM THE FAN BASE
		1	MIAMI DADE CERTIFICATION - NDA-1 ALUMINUM UPBLAST
2	EF-2	1	2 YEAR PARTS WARRANTY
		1	12-BDD DAMPER
		1	ECM WIRING PACKAGE - MANUAL DR 0-10VDC REFERENCE SPEED CONTROL - RTC- (TELCO MOTOR), CCW ROTATION
3	MAU-1	1	MIAMI DADE CERTIFICATION - NDA-1 ALUMINUM DOWNBLAST 10
		1	2 YEAR PARTS WARRANTY
		1	SIZE 1 UNTEMPERED COMMERCIAL DOWN DISCHARGE FOR DIRECT DRIVE AHUS
3	MAU-1	1	MIAMI DADE CERTIFICATION - NDA-2 SUPPLY
		1	GRAVITY BACKDRAFT DAMPER FOR SIZE 1 HOUSING
		1	2 YEAR PARTS WARRANTY

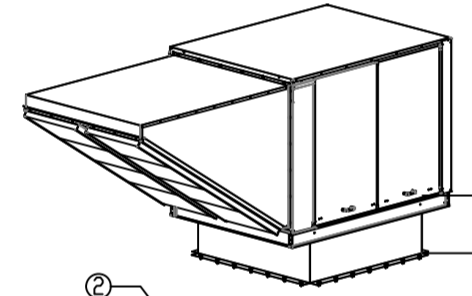
**FAN ACCESSORIES**

FAN UNIT NO	TAG	EXHAUST				SUPPLY		
		GREASE CUP	GRAVITY DAMPER	WALL MOUNT	SIDE DISCHARGE	GRAVITY DAMPER	MOTORIZED DAMPER	WALL MOUNT
1	EF-1	YES						
2	EF-2		YES					
3	MAU-1					YES		

**CURB ASSEMBLIES**

NO	DN FAN	TAG	WEIGHT	ITEM	SIZE
1	# 1	EF-1	90 LBS	CURB	31.500"W X 31.500"L X 26.000"H ALONG LENGTH, RIGHT VENTED 16 GAUGE.
2	# 2	EF-2	51 LBS	CURB	17.500"W X 17.500"L X 26.000"H ALONG LENGTH, RIGHT 16 GAUGE.
3	# 3	MAU-1	48 LBS	CURB	21.000"W X 21.000"L X 20.000"H ALONG LENGTH, RIGHT 16 GAUGE.

**MIAMI-DADE NDA2 SUPPLY FANS**



**GENERAL NOTES**

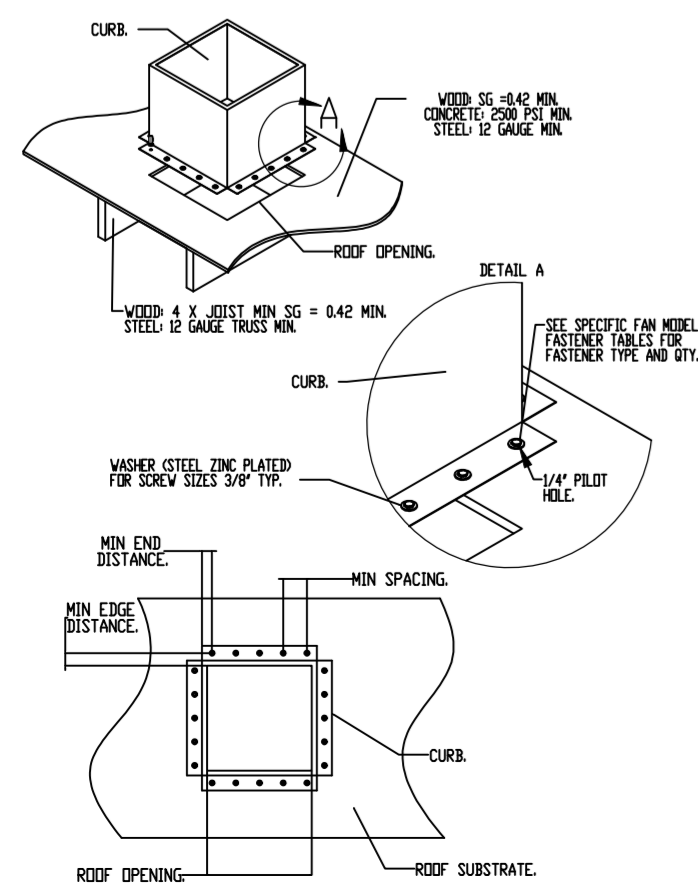
- THIS APPROVAL IS FOR THE STRUCTURAL CAPACITY AND IMPACT RATING OF THE EXTERIOR HOUSING ONLY. IT DOES NOT INCLUDE ANY INTERIOR MECHANISM OR ELECTRICAL PART.
- THESE FANS HAVE NOT BEEN TESTED FOR WIND BROKEN RAIN TEST PER FLORIDA BUILDING CODE, TAS200 (A)-2S.
- TESTED IN ACCORDANCE TO FLORIDA BUILDING CODE TEST PROTOCOL TAS200, TAS202, TAS203.
- TESTED FOR AREAS INCLUDING HIGH VELOCITY HURRICANE ZONES.
- TESTED UNDER MIAMI-DADE COUNTY NOTIFICATION NUMBER ATT-88033.

**DESIGN PRESSURE: +300 / -1200 PSF. LARGE MISSILE IMPACT RESISTANT.**

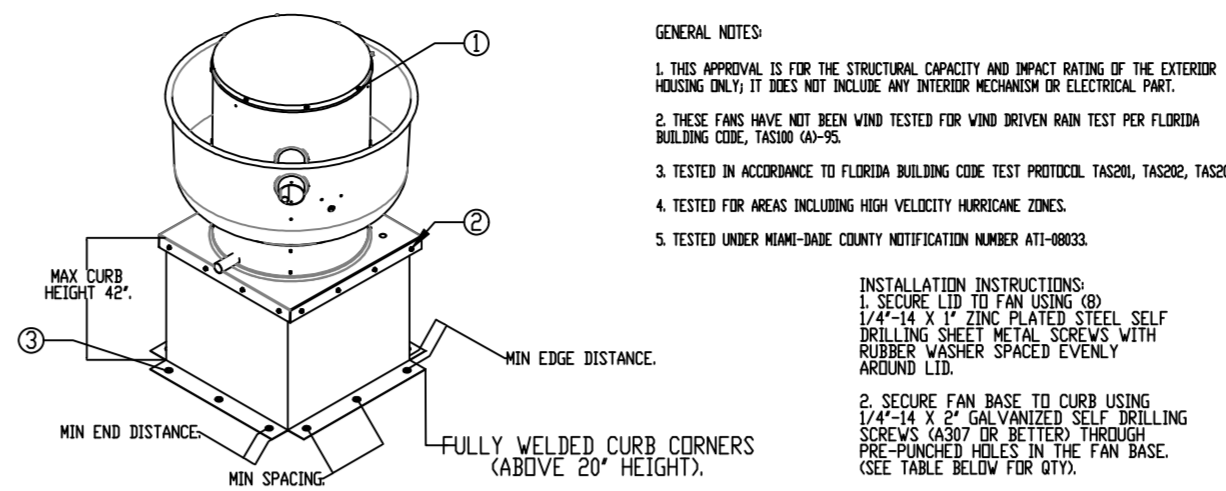
INSTALLATION FASTENER TYPES			
FAN TO CURB	WOOD (S.G = 0.42 MIN.)	STEEL (12 GAUGE MIN.)	CONCRETE (2500 PSI MIN. CRACKED CONCRETE)
FASTENER	1/4" x 1" SELF DRILLING SCREW (A307 OR BETTER)	3/8" DIA. ZINC PLATED LAG BOLT	1/4" x 14 DRILL-FLEX SELF DRILLING SCREW
MINIMUM THREAD PENETRATION	N/A	2"	12 GAUGE
MINIMUM EDGE DISTANCE	N/A	1-1/2"	3/8"
MINIMUM END DISTANCE	N/A	2-5/8"	3/8"
MINIMUM SPACING	N/A	1-1/2"	3/4"

INSTALLATION FASTENER QTY												
FAN MODEL	CURB TO FAN (ROOF)			WOOD (ROOF)			STEEL (WALL)			CONCRETE (WALL)		
	PER SIDE	TOTAL	QTY	PER SIDE	TOTAL	QTY	PER SIDE	TOTAL	QTY	PER SIDE	TOTAL	QTY
MODULAR 1	2	2	8	4	3	14	4	3	14	3	2	10

**MIAMI-DADE COUNTY - CURB ROOF INSTALLATION GUIDE**



**MIAMI-DADE NDA1 ALUMINUM UP-BLAST FANS**



**GENERAL NOTES**

- THIS APPROVAL IS FOR THE STRUCTURAL CAPACITY AND IMPACT RATING OF THE EXTERIOR HOUSING ONLY. IT DOES NOT INCLUDE ANY INTERIOR MECHANISM OR ELECTRICAL PART.
- THESE FANS HAVE NOT BEEN TESTED FOR WIND BROKEN RAIN TEST PER FLORIDA BUILDING CODE, TAS200 (A)-2S.
- TESTED IN ACCORDANCE TO FLORIDA BUILDING CODE TEST PROTOCOL TAS200, TAS202, TAS203.
- TESTED FOR AREAS INCLUDING HIGH VELOCITY HURRICANE ZONES.
- TESTED UNDER MIAMI-DADE COUNTY NOTIFICATION NUMBER ATT-88033.

- INSTALLATION INSTRUCTIONS:**
- SECURE LID TO FAN USING 1/4" x 14 DRILL-FLEX SELF DRILLING SCREW (A307 OR BETTER) THROUGH FAN BASE TO CURB USING 3/8" DIA. ZINC PLATED LAG BOLT. SEE TABLE BELOW FOR QTY.
  - SECURE FAN BASE TO CURB USING 1/4" x 14 DRILL-FLEX SELF DRILLING SCREWS (A307 OR BETTER) THROUGH PRE-DRILLED HOLES IN THE FAN BASE. SEE TABLE BELOW FOR QTY.
  - SECURE CURB TO ROOF OR WALL BY DRILLING 1/4" DIA. PILOT HOLES IN THE CURB FLANGE AT LOCATIONS SHOWN IN THE DIAGRAM. SEE TABLE BELOW FOR FASTENER TYPE. USE TABLE BELOW FOR FASTENER QTY.

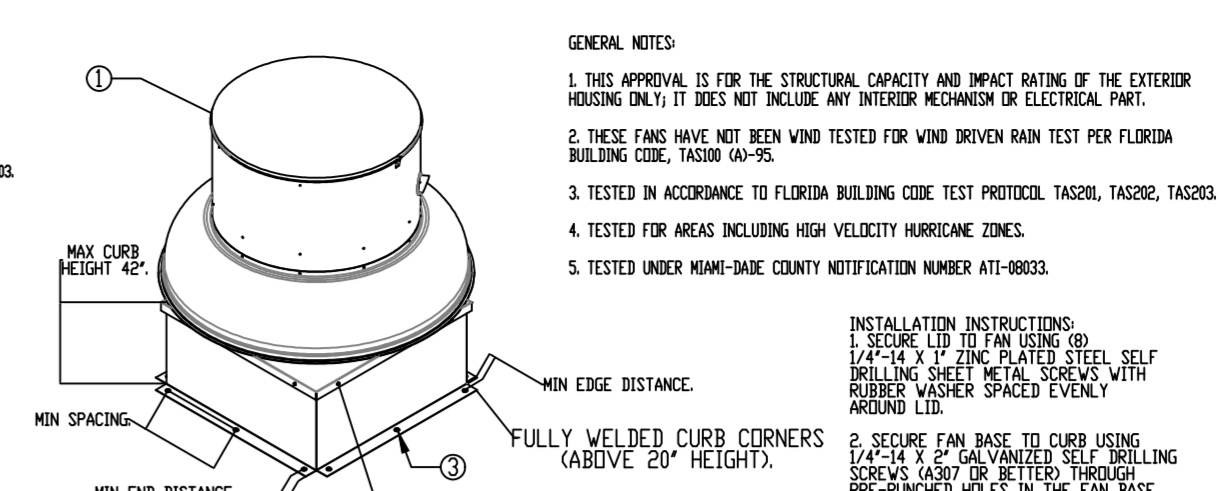
**CURB MATERIAL:** 20" HIGH & LESS = 20 GA. STEEL. ABOVE 20" THRU 42" = 16 GA. STEEL.

**DESIGN PRESSURE: +1500 / -1500 PSF. LARGE MISSILE IMPACT RESISTANT.**

INSTALLATION FASTENER TYPES			
FAN TO CURB	WOOD (S.G = 0.42 MIN.)	STEEL (12 GAUGE MIN.)	CONCRETE (2500 PSI MIN. CRACKED CONCRETE)
FASTENER	5/16" x 2" SELF DRILLING SCREW (ELCO DRILL-FLEX OR BETTER)	3/8" DIA. ZINC PLATED LAG BOLT	1/4" x 14 DRILL-FLEX SELF DRILLING SCREW
MINIMUM THREAD PENETRATION	N/A	2-1/2"	12 GAUGE
MINIMUM EDGE DISTANCE	N/A	1-1/2"	3/8"
MINIMUM END DISTANCE	N/A	2-5/8"	3/8"
MINIMUM SPACING	N/A	1-1/2"	3/4"

INSTALLATION FASTENER QTY												
FAN MODEL	CURB TO FAN (ROOF)			WOOD (ROOF)			STEEL (WALL)			CONCRETE (WALL)		
	PER SIDE	TOTAL	QTY	PER SIDE	TOTAL	QTY	PER SIDE	TOTAL	QTY	PER SIDE	TOTAL	QTY
DU240	3	12	9	12	6	24	6	24	7	28	7	28

**MIAMI-DADE NDA1 ALUMINUM DOWN-BLAST FANS**



**GENERAL NOTES**

- THIS APPROVAL IS FOR THE STRUCTURAL CAPACITY AND IMPACT RATING OF THE EXTERIOR HOUSING ONLY. IT DOES NOT INCLUDE ANY INTERIOR MECHANISM OR ELECTRICAL PART.
- THESE FANS HAVE NOT BEEN TESTED FOR WIND BROKEN RAIN TEST PER FLORIDA BUILDING CODE, TAS200 (A)-2S.
- TESTED IN ACCORDANCE TO FLORIDA BUILDING CODE TEST PROTOCOL TAS200, TAS202, TAS203.
- TESTED FOR AREAS INCLUDING HIGH VELOCITY HURRICANE ZONES.
- TESTED UNDER MIAMI-DADE COUNTY NOTIFICATION NUMBER ATT-88033.

- INSTALLATION INSTRUCTIONS:**
- SECURE LID TO FAN USING 1/4" x 14 DRILL-FLEX SELF DRILLING SCREW (A307 OR BETTER) THROUGH FAN BASE TO CURB USING 3/8" DIA. ZINC PLATED LAG BOLT. SEE TABLE BELOW FOR QTY.
  - SECURE FAN BASE TO CURB USING 1/4" x 14 DRILL-FLEX SELF DRILLING SCREWS (A307 OR BETTER) THROUGH PRE-DRILLED HOLES IN THE FAN BASE. SEE TABLE BELOW FOR QTY.
  - SECURE CURB TO ROOF OR WALL BY DRILLING 1/4" DIA. PILOT HOLES IN THE CURB FLANGE AT LOCATIONS SHOWN IN THE DIAGRAM. SEE TABLE BELOW FOR FASTENER TYPE. USE TABLE BELOW FOR FASTENER QTY.

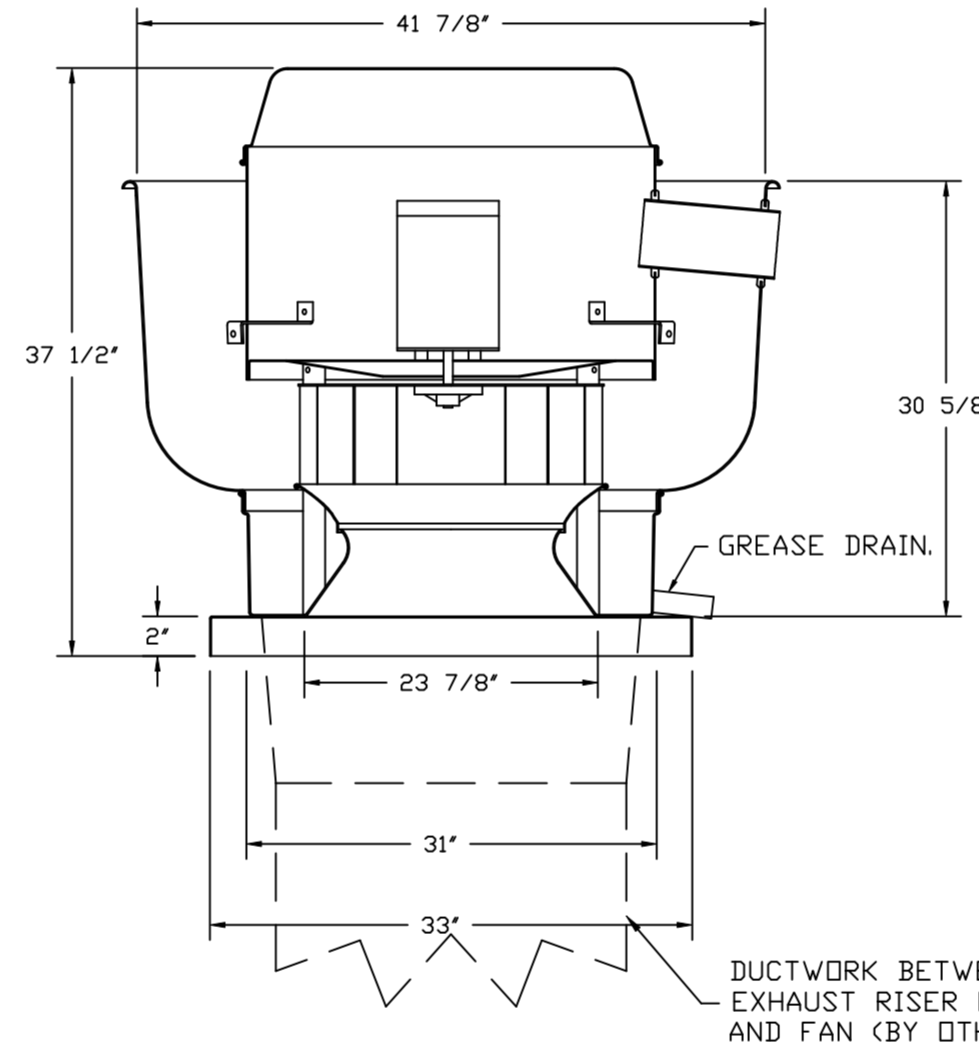
**CURB MATERIAL:** 20" HIGH & LESS = 20 GA. STEEL. ABOVE 20" THRU 42" = 16 GA. STEEL.

**DESIGN PRESSURE: +1500 / -1500 PSF. LARGE MISSILE IMPACT RESISTANT.**

INSTALLATION FASTENER TYPES			
FAN TO CURB	WOOD (S.G = 0.42 MIN.)	STEEL (12 GAUGE MIN.)	CONCRETE (2500 PSI MIN. CRACKED CONCRETE)
FASTENER	5/16" x 2" SELF DRILLING SCREW (ELCO DRILL-FLEX OR BETTER)	3/8" DIA. ZINC PLATED LAG BOLT	1/4" x 14 DRILL-FLEX SELF DRILLING SCREW
MINIMUM THREAD PENETRATION	N/A	2-1/2"	12 GAUGE
MINIMUM EDGE DISTANCE	N/A	1-1/2"	3/8"
MINIMUM END DISTANCE	N/A	2-5/8"	3/8"
MINIMUM SPACING	N/A	1-1/2"	3/4"

INSTALLATION FASTENER QTY												
FAN MODEL	CURB TO FAN (ROOF)			WOOD (ROOF)			STEEL (WALL)			CONCRETE (WALL)		
	PER SIDE	TOTAL	QTY	PER SIDE	TOTAL	QTY	PER SIDE	TOTAL	QTY	PER SIDE	TOTAL	QTY
DU240	3	12	9	12	6	24	6	24	7	28	7	28

**FAN #1 DU240HFA - EXHAUST FAN (EF-1)**

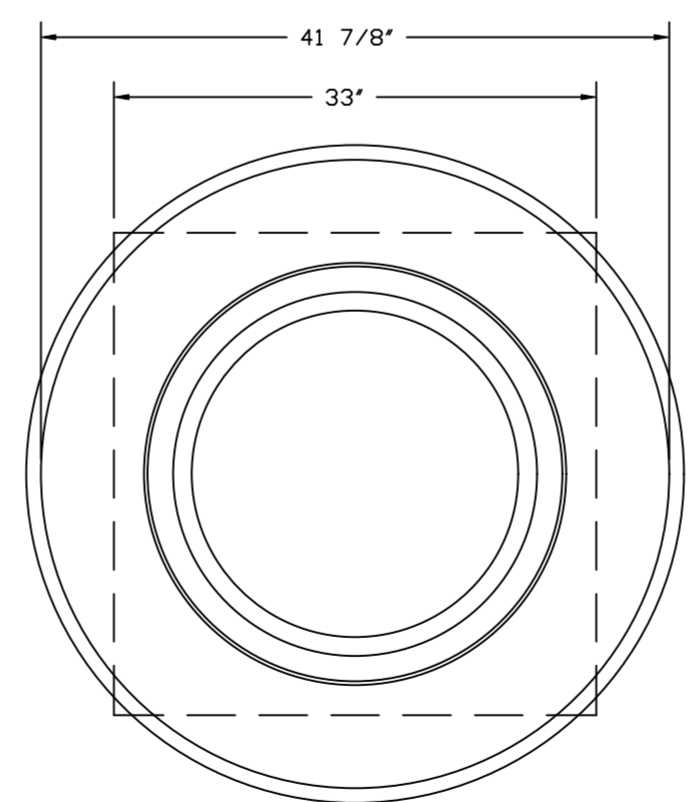


**FEATURES:**

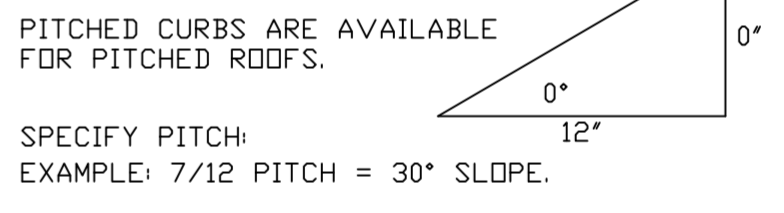
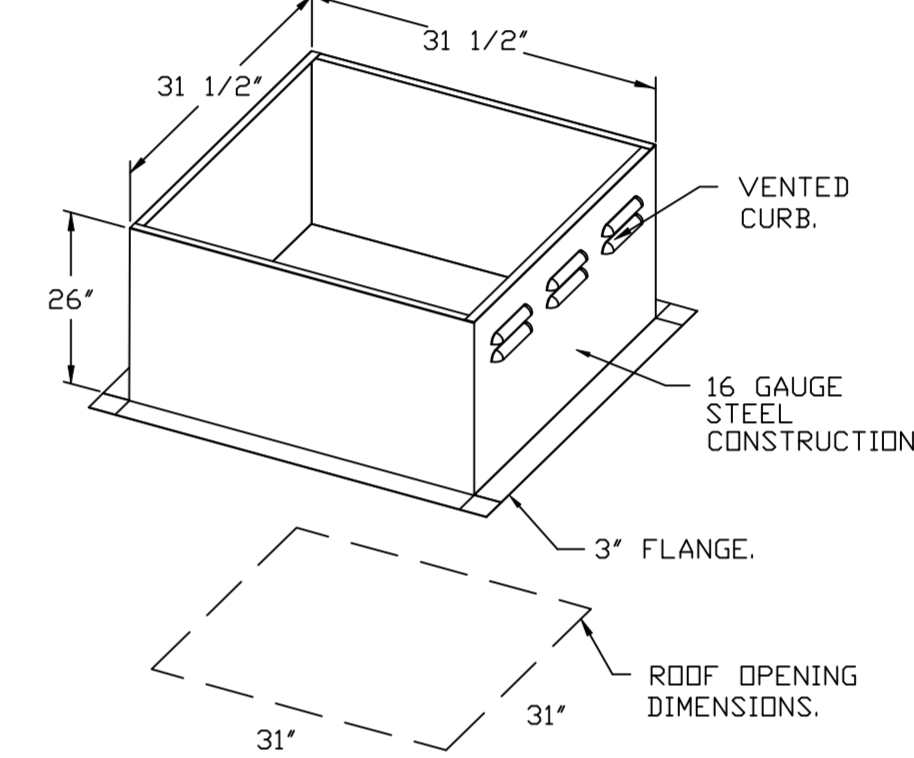
- DIRECT DRIVE CONSTRUCTION (NO BELTS/PULLEYS).
  - ROOF MOUNTED FANS.
  - RESTAURANT MODEL.
  - UL705 AND UL762 AND ULC-S645
  - VARIABLE SPEED CONTROL.
  - INTERNAL WIRING.
  - THERMAL OVERLOAD PROTECTION (SINGLE PHASE).
  - HIGH HEAT OPERATION 300°F (149°C).
  - GREASE CLASSIFICATION TESTING.
  - NEMA 3R SAFETY DISCONNECT SWITCH.
- NORMAL TEMPERATURE TEST**  
EXHAUST FAN MUST OPERATE CONTINUOUSLY WHILE EXHAUSTING AIR AT 300°F (149°C) UNTIL ALL FAN PARTS HAVE REACHED THERMAL EQUILIBRIUM, AND WITHOUT ANY DETERIORATING EFFECTS TO THE FAN WHICH WOULD CAUSE UNSAFE OPERATION.
- ABNORMAL FLARE-UP TEST**  
EXHAUST FAN MUST OPERATE CONTINUOUSLY WHILE EXHAUSTING BURNING GREASE VAPORS AT 600°F (316°C) FOR A PERIOD OF 15 MINUTES WITHOUT THE FAN BECOMING DAMAGED TO ANY EXTENT THAT COULD CAUSE AN UNSAFE CONDITION.

**OPTIONS**

- GREASE BOX.
- REMOVE HINGE KIT LABEL FROM THE FAN BASE.
- MIAMI DADE CERTIFICATION - NDA-1 ALUMINUM UPBLAST.
- 2 YEAR PARTS WARRANTY.



**TOP VIEW**



PITCHED CURBS ARE AVAILABLE FOR PITCHED ROOFS.  
SPECIFY PITCH: EXAMPLE: 7/12 PITCH = 30° SLOPE.

**REVISIONS**

DESCRIPTION	DATE

**www.captiveaire.com**

**Highwoods Group**

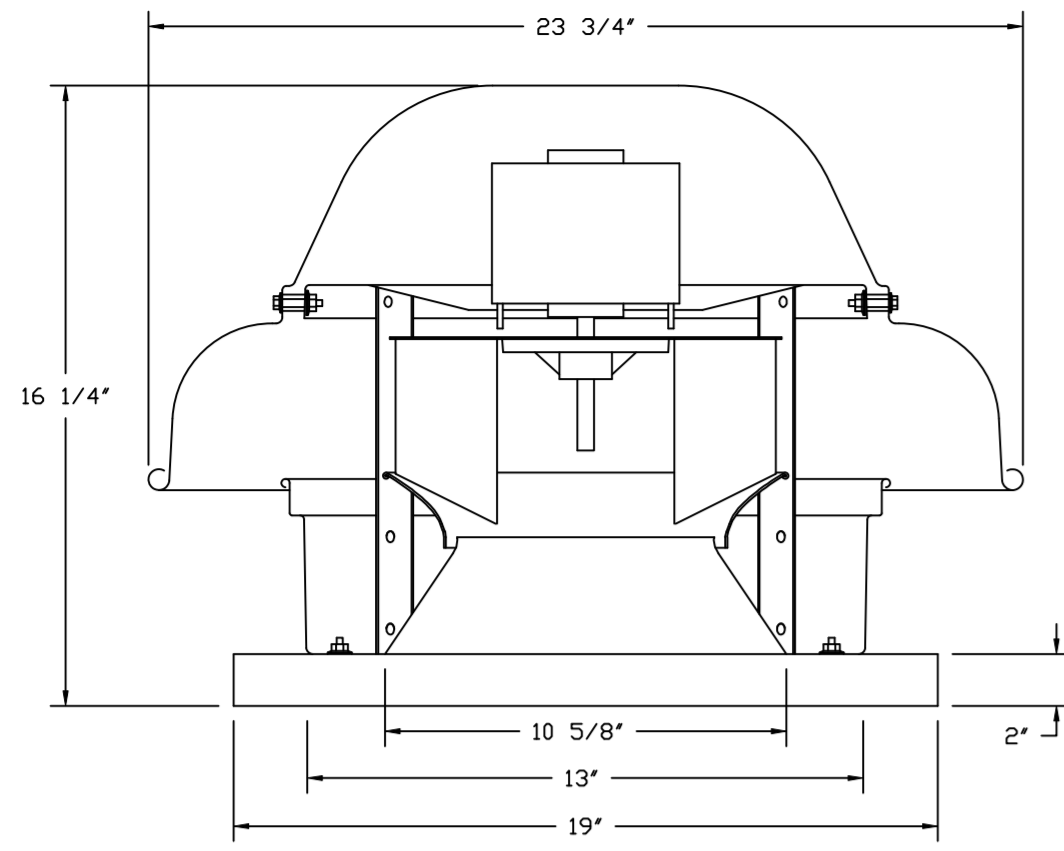
4641 Paragon Park Rd., Raleigh, NC. 27616 PHONE: (919) 875-0420 FAX: (919) 875-0577 EMAIL: reg@captivair.com

**CHIPOTLE MARGATE #4222**  
**POMPANO BEACH, FL, 33063**

**DATE:** 10/19/2022  
**DWG.#:** 5476472  
**DRAWN BY:** JMB-40  
**SCALE:** 3/4" = 1'-0"  
**MASTER DRAWING**

**SHEET NO.**  
3

FAN #2 DR12HFA - EXHAUST FAN (CF-2)

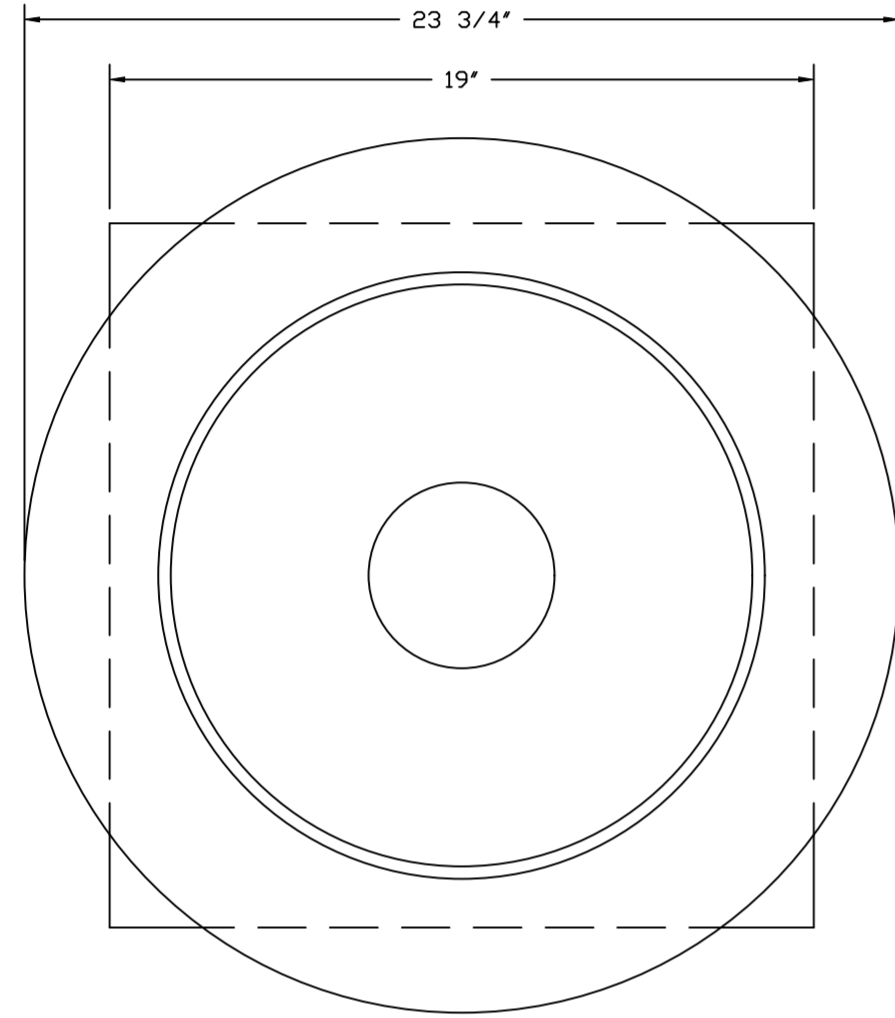


FEATURES:

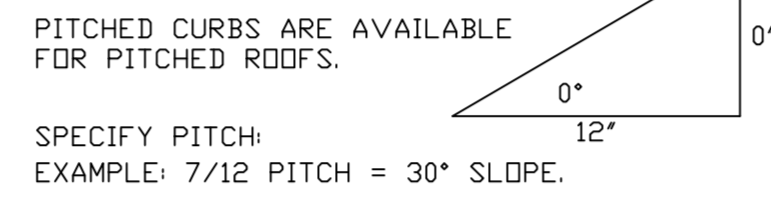
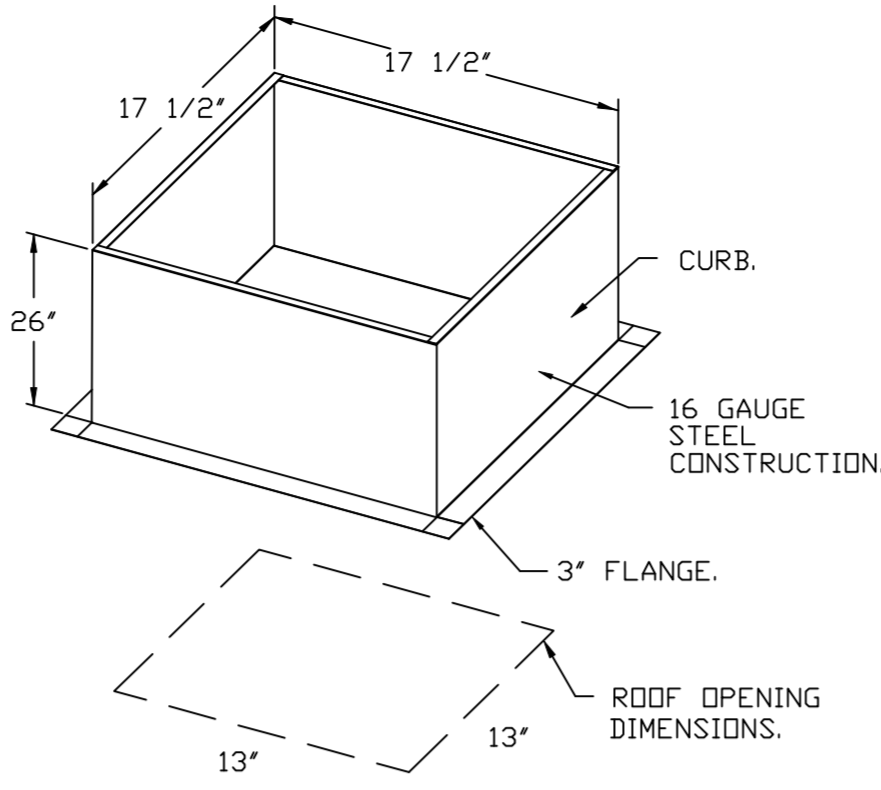
- DIRECT DRIVE CONSTRUCTION (NO BELTS/PULLEYS).
- ROOF MOUNTED FANS.
- UL705.
- SAFETY DISCONNECT.
- STANDARD BIRD SCREEN.
- SPEED CONTROL.

OPTIONS

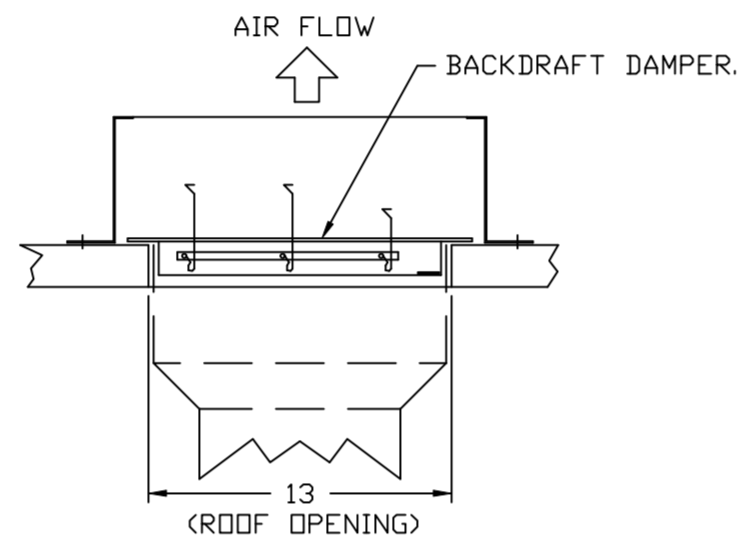
- 1 12-BDD DAMPER.
- ECM WIRING PACKAGE - MANUAL OR 0-10VDC REFERENCE SPEED CONTROL
- RTC - (TELCO MOTOR), CCW ROTATION.
- MIAMI DADE CERTIFICATION - NDA-1 ALUMINUM DOWNBLAST 10.
- 2 YEAR PARTS WARRANTY.



TOP VIEW

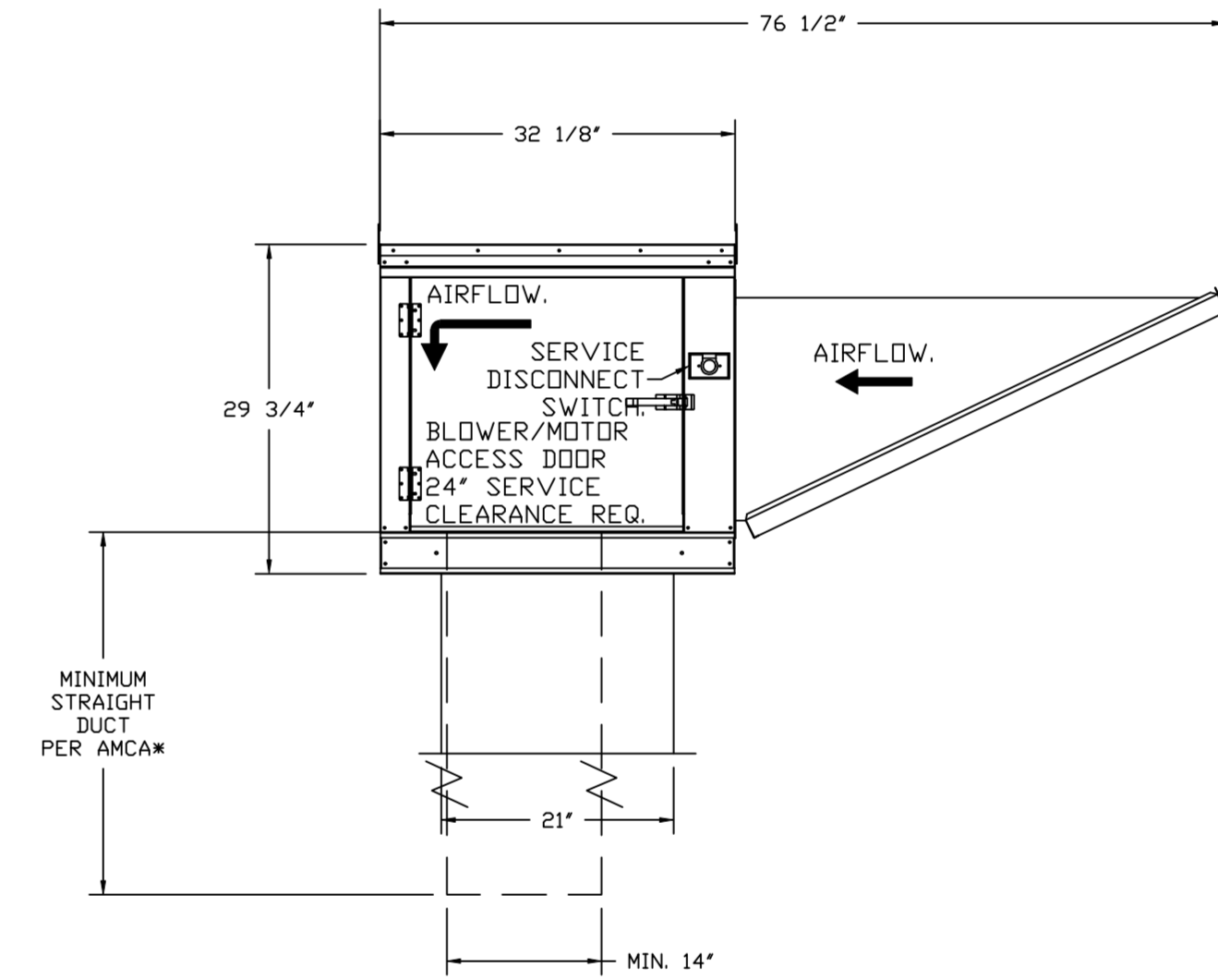
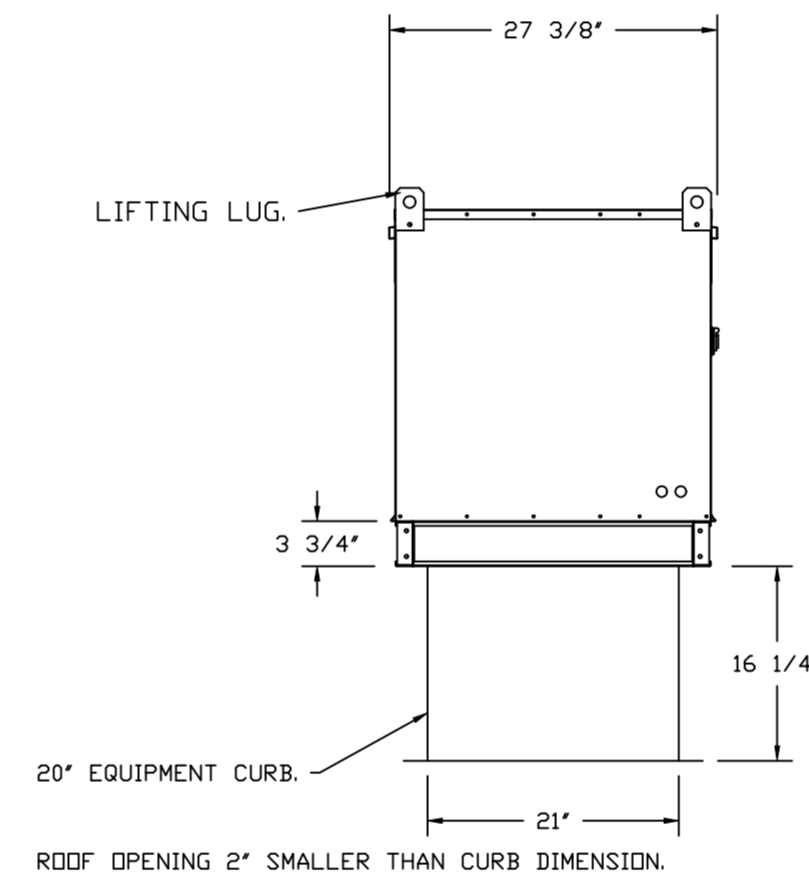
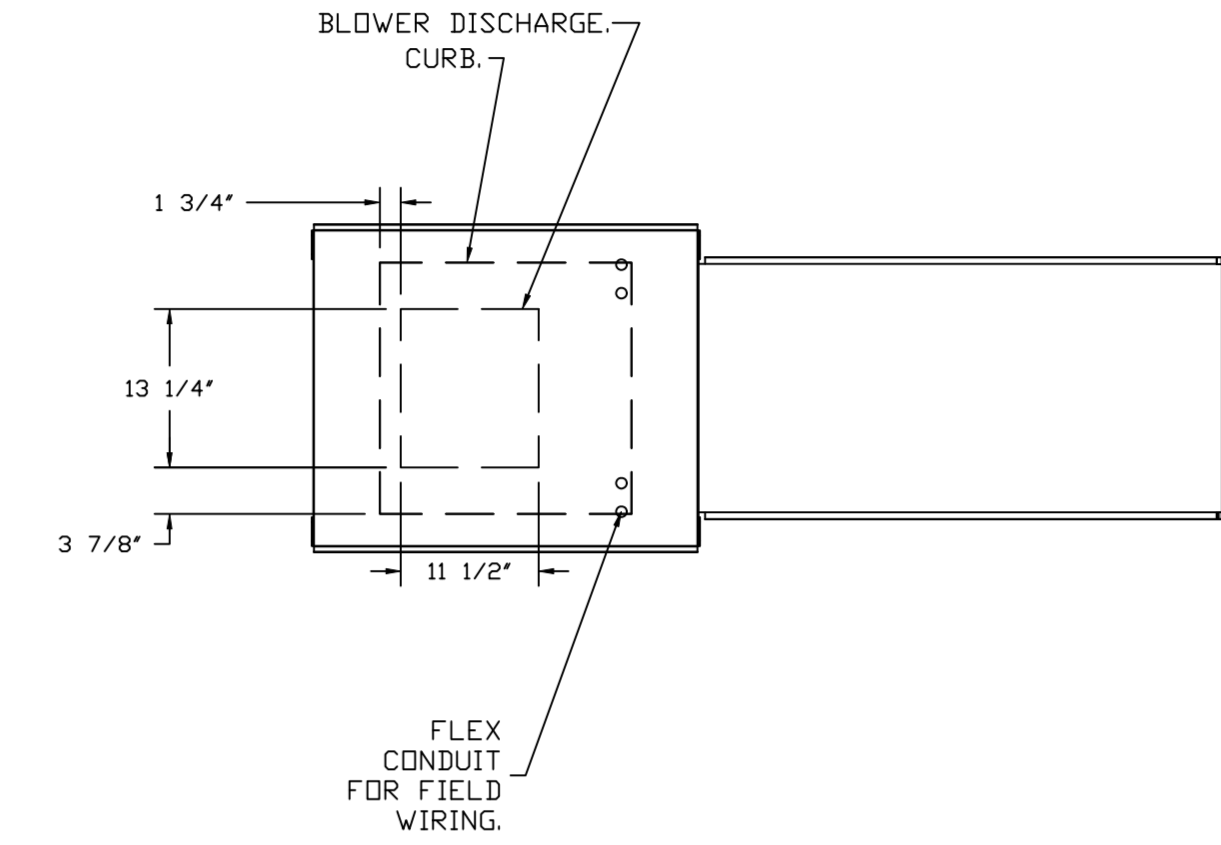


BACKDRAFT DAMPER INSTALLATION



- FAN #3 A1-15D - SUPPLY FAN (MAU-1)
1. UNTEMPERED SUPPLY UNIT WITH 15" MIXED FLOW DIRECT DRIVE FAN IN SIZE #1 HOUSING.
  2. INTAKE HOOD WITH EZ FILTERS.
  3. DOWN DISCHARGE - AIR FLOW RIGHT -> LEFT.
  4. DOWN DISCHARGE CONSTRUCTION FOR SIZE 1 UNTEMPERED DIRECT DRIVE AHUS.
  5. MIAMI DADE IMPACT AND WIND LOAD CERTIFICATION \*30 / -130 PSF - MIAMI DADE COUNTY PRODUCT CONTROL APPROVED. FLORIDA BUILDING CODE APPROVAL. ROOF MOUNT EXHAUST CURBS UP TO 20" HIGH MUST BE 18 GAUGE ALUMINIZED.
  6. GRAVITY BACK DRAFT DAMPER, 16" WIDE X 18" HIGH, STANDARD GALVANIZED CONSTRUCTION, 1 1/4" REAR FLANGE, FOR SIZE 1 UNTEMPERED FAN HOUSING (S18).
  7. HINGED DOUBLE WALL INSULATED DDDR ASSEMBLY (BURNER/BLOWER SECTION).
  8. 2 YEAR PARTS WARRANTY.

\*NOTE: SUPPLY DUCT MUST BE INSTALLED TO MEET SMACNA STANDARDS. A MINIMUM STRAIGHT DUCT LENGTH MUST BE MAINTAINED DOWNSTREAM OF UNIT DISCHARGE AS OUTLINED IN AMCA PUBLICATION 201. WHEN USING RECTANGULAR DUCTWORK, ELBOWS MUST BE RADIUS THROAT, RADIUS BACK WITH TURNING VANES. FLEXIBLE DUCTWORK AND SQUARE THROAT/SQUARE BACK ELBOWS SHOULD NOT BE USED. ANY TRANSITION AND/OR TURNS IN THE DUCTWORK WILL CAUSE SYSTEM EFFECT. SYSTEM EFFECT WILL DRASTICALLY INCREASE STATIC PRESSURE AND REDUCE AIRFLOW. DO NOT RELY ON UNIT TO SUPPORT DUCT IN ANY WAY. FAILURE TO PROPERLY SIZE DUCTWORK MAY CAUSE SYSTEM EFFECTS AND REDUCE PERFORMANCE OF THE EQUIPMENT. SUGGESTED STRAIGHT DUCT SIZE IS 14" x 14".



REVISIONS	
DESCRIPTION	DATE

www.captiveair.com

**CAPTIVE AIR**

Highwoods Group

4641 Paragon Park Rd., Raleigh, NC, 27616 PHONE: (919) 875-0420 FAX: (919) 875-0577 EMAIL: reg10@captiveair.com

CHIPOTLE MARGATE #4222

POMPANO BEACH, FL, 33063

DATE: 10/19/2022

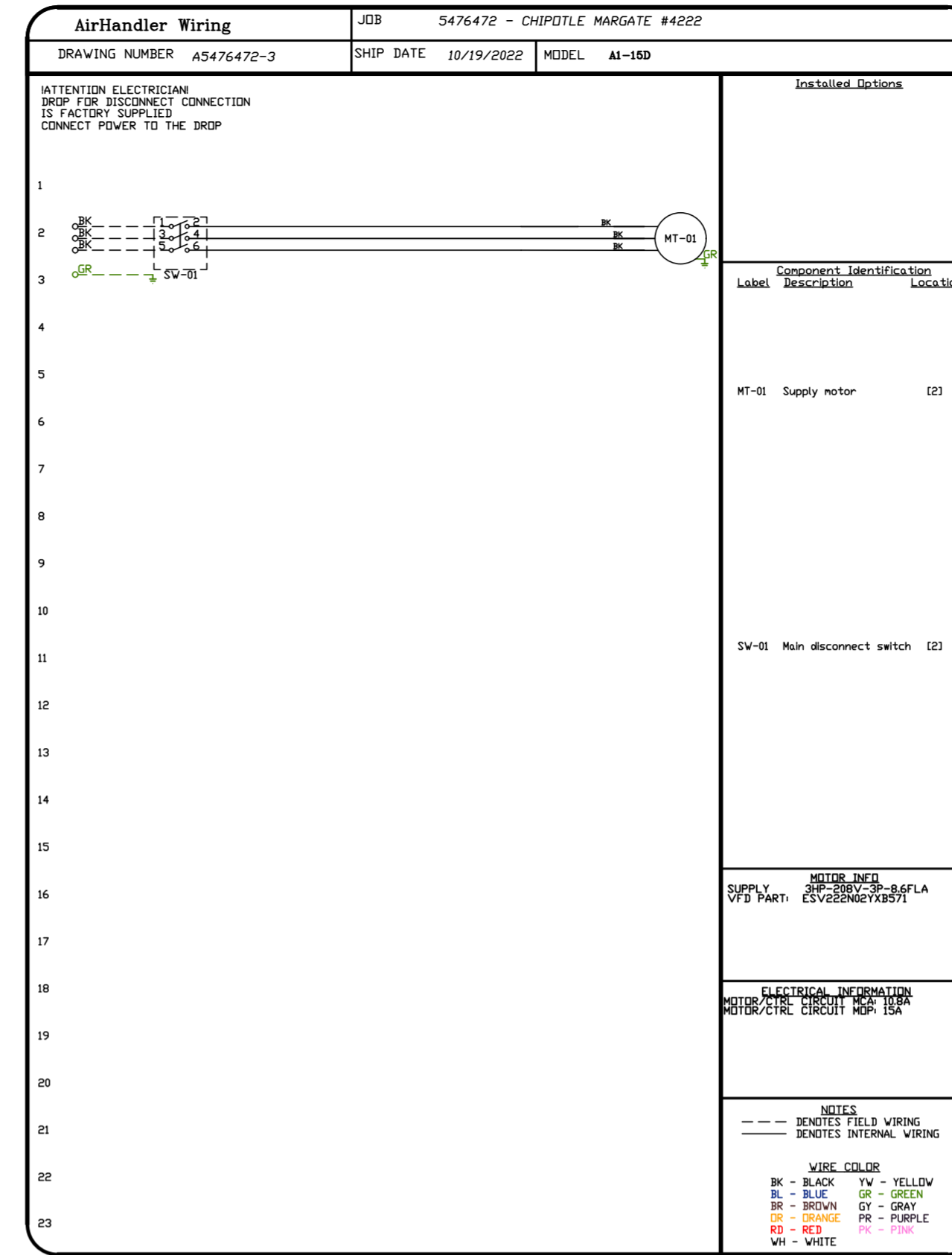
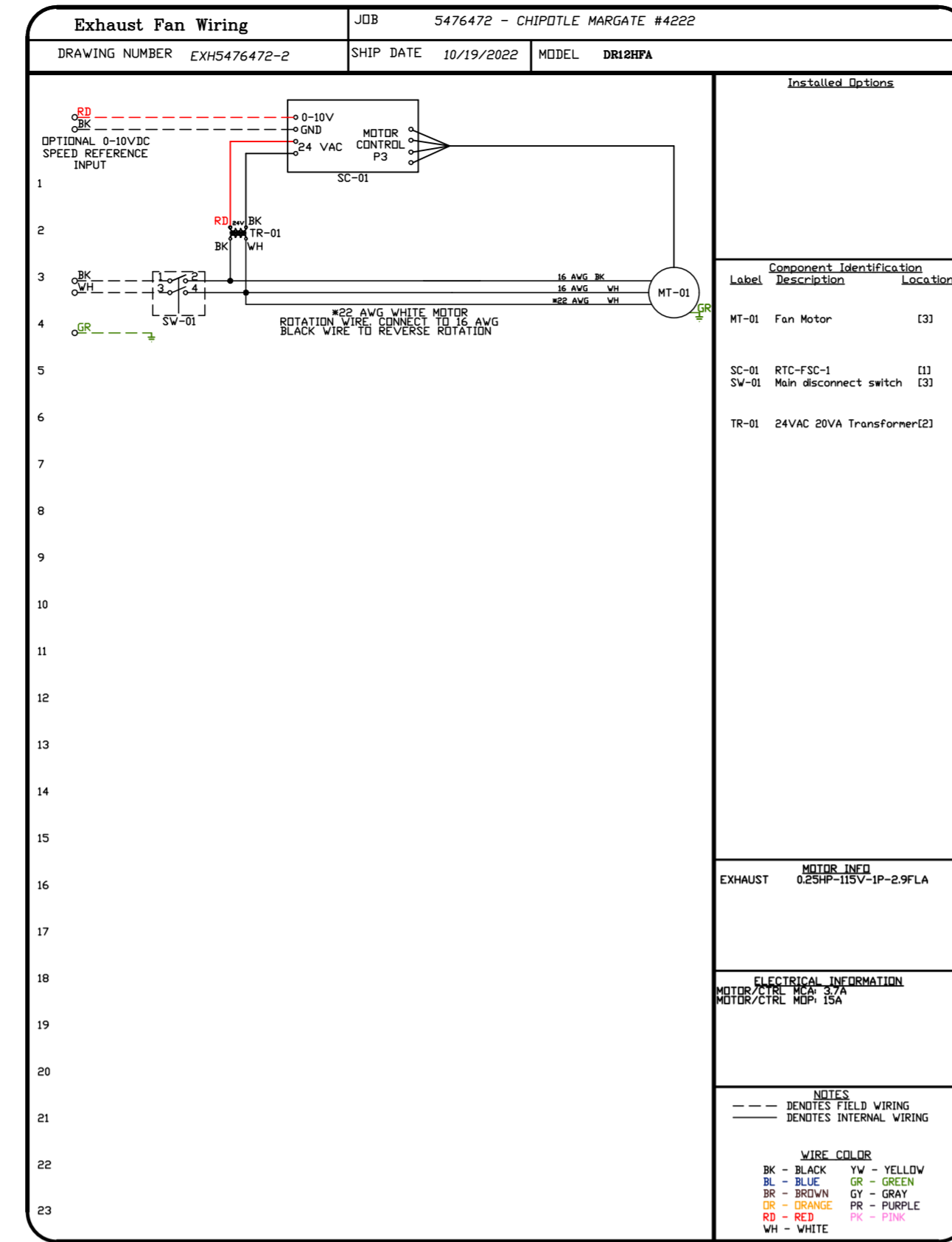
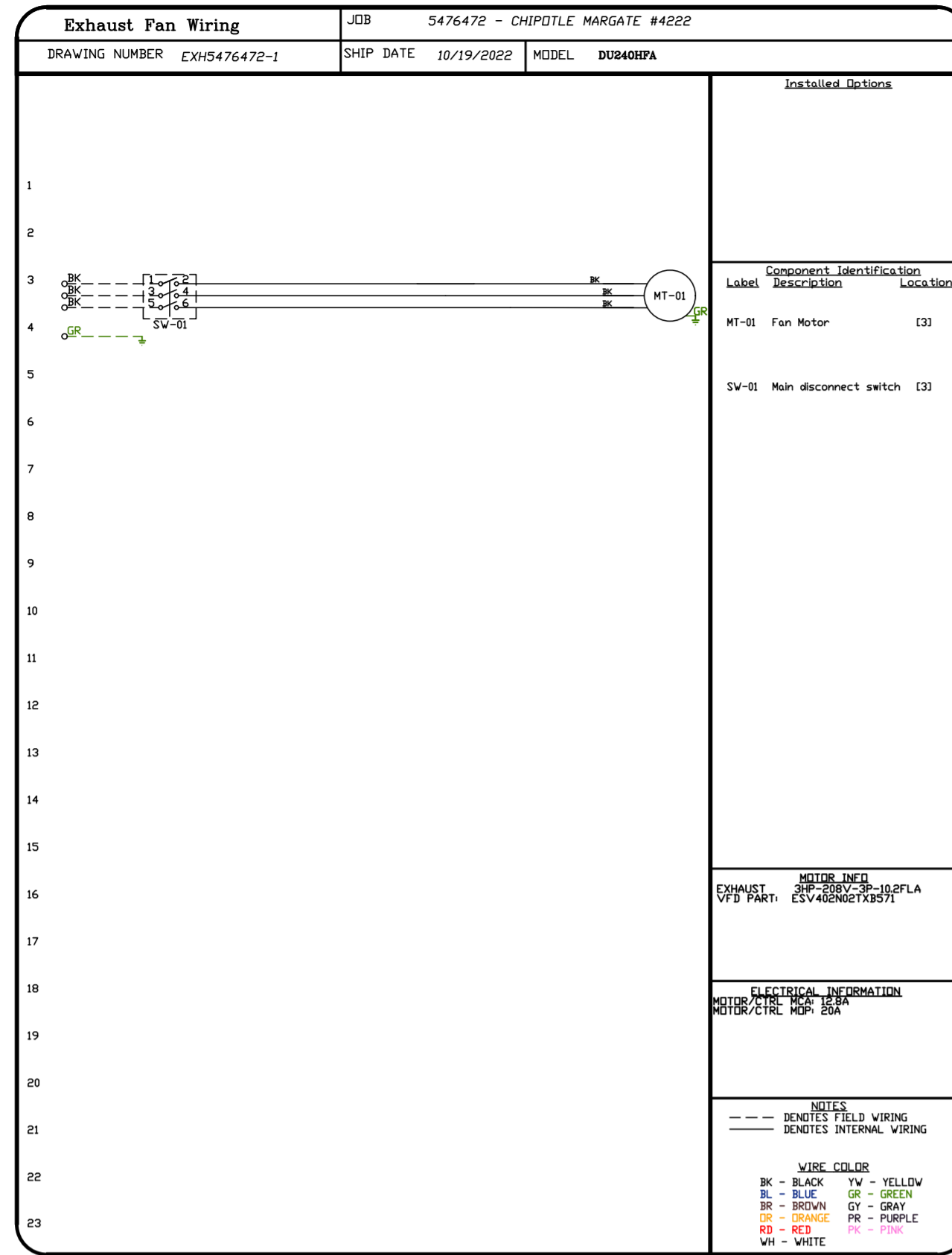
DWG.#: 5476472

DRAWN BY: JMB-40

SCALE: 3/4" = 1'-0"

MASTER DRAWING

SHEET NO. 4



REVISIONS	
DESCRIPTION	DATE:

Highwoods Group  
www.captive.com  
www.captive.com  
4641 Paragon Park Rd., Raleigh, NC, 27616 PHONE: (919) 875-0420 FAX: (919) 875-0577 EMAIL: reg10@captive.com

CHIPOTLE MARGATE #4222  
POMPANO BEACH, FL, 33063

DATE: 10/19/2022  
DWG.#: 5476472  
DRAWN BY: JMB-40  
SCALE: 3/4" = 1'-0"  
MASTER DRAWING

SHEET NO. 6

