

**HOOD INFORMATION - JOB#5401674**

HOOD NO	TAG	MODEL	MANUFACTURER	LENGTH	MAX COOKING TEMP	TYPE	APPLIANCE DUTY	DESIGN CFM/FT	TOTAL EXH CFM	EXHAUST PLENUM RISER(S)						TOTAL SUPPLY CFM	HOOD CONSTRUCTION	HOOD CONFIG		
										WIDTH	LENG	HEIGHT	DIA	CFM	VEL			SP	END TO END	ROW
1	HD 1 Fryer	3650 ELPX-2	ECON-AIR	3' 6"	600 DEG	I	HEAVY	185	648			4'	8"	648	1856	-0.662'	0	430 SS WHERE EXPOSED	ALONE	ALONE
2	HD 2 Kettle	4824 EX-2-PSP-F	ECON-AIR	6' 11"	600 DEG	I	HEAVY	185	1280			4'	12"	1280	1630	-0.382'	1100	304 SS WHERE EXPOSED	ALONE	ALONE
3	HD DISH	4824 ES-VHB-G	ECON-AIR	4' 0"	700 DEG	II	N/A	125	500			4'	8"	500	1432	-0.095'	0	304 SS 100%	ALONE	ALONE

**PATENT NUMBERS**

AC-PSP (UNITED STATES) - US PATENT 7963830 B2.  
 AC-PSP WALL (CANADA) - CA PATENT 2820509.  
 AC-PSP ISLAND (CANADA) - CA PATENT 2520330.

**HOOD INFORMATION**

HOOD NO	TAG	FILTER(S)				LIGHT(S)				UTILITY CABINET(S)				FIRE SYSTEM PIPING	HOOD HANGING WEIGHT		
		TYPE	QTY	HEIGHT	LENGTH	EFFICIENCY @ 7 MICRONS	QTY	TYPE	WIRE GUARD	LOCATION	SIZE	FIRE SYSTEM				ELECTRICAL	SWITCHES
1	HD 1 Fryer	CAPTRATE SOLD FILTER	2	16'	20'	85% SEE FILTER SPEC	2	L55 SERIES E26	NO	WALL MNT	12"x42"x24"	TANK FS	4.0	SC-121110MA	1 LIGHT 1 FAN	YES	209 LBS
2	HD 2 Kettle	SS BAFFLE WITH HANDLES	5	16'	16'	30%	3	L55 SERIES E26	NO							NO	395 LBS
3	HD DISH						0									NO	193 LBS

**HOOD OPTIONS**

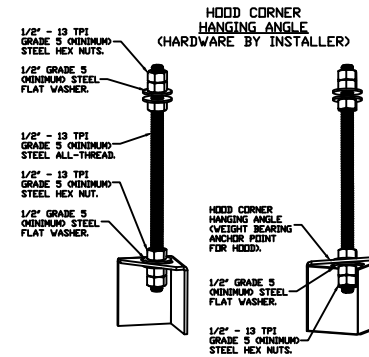
HOOD NO	TAG	OPTION
1	HD 1 Fryer	FIELD WRAPPER 36.00' HIGH FRONT, LEFT, RIGHT.
		BACKSPLASH 61.00' HIGH X 45.00' LONG 430 SS VERTICAL.
		BACKSPLASH 120.00' HIGH X 18.00' LONG 430 SS VERTICAL.
		BACKSPLASH 120.00' HIGH X 18.00' LONG 430 SS VERTICAL.
		LEFT END STANDOFF(FIN/SLP) 3' WIDE 36' LONG INSULATED.
		RIGHT QUARTER END PANEL 26' TOP WIDTH, 0' BOTTOM WIDTH, 26' HIGH 430 SS.
		LEFT QUARTER END PANEL 26' TOP WIDTH, 0' BOTTOM WIDTH, 26' HIGH 430 SS.
2	HD 2 Kettle	STRUCTURAL FRONT PANEL.
		SENSDR-CV.
		FIELD WRAPPER 17.00' HIGH FRONT, LEFT.
		BACKSPLASH 120.00' HIGH X 18.00' LONG 304 SS VERTICAL.
		BACKSPLASH 80.00' HIGH X 83.00' LONG 304 SS VERTICAL.
		RIGHT SIDESPLASH 80.00' HIGH X 48.00' LONG 304 SS VERTICAL.
		BACKSPLASH - INSIDE CORNER 80.00' HIGH X 2.00' LEG LENGTH 304 SS VERTICAL.
3	HD DISH	RIGHT QUARTER END PANEL 23' TOP WIDTH, 0' BOTTOM WIDTH, 23' HIGH 304 SS.
		LEFT QUARTER END PANEL 23' TOP WIDTH, 0' BOTTOM WIDTH, 23' HIGH 304 SS.
		FIELD WRAPPER 17.00' HIGH FRONT, LEFT, RIGHT, BACK.

**PERFORATED SUPPLY PLENUM(S)**

HOOD NO	TAG	PDS	LENGTH	WIDTH	HEIGHT	TYPE	RISER(S)				
							WIDTH	LENG	DIA	CFM	SP
2	HD 2 Kettle	Front	83'	14'	6'	MUA	10"	24"		550	0.165'
						MUA	10"	24"		550	0.165'

**WALL-MOUNT UTILITY CABINET**

HOOD NO	LOCATION	SIZE	UTILITY CABINET(S)				WEIGHT
			FIRE SYSTEM		ELECTRICAL	SWITCHES	
1	WALL MNT	12"x42"x24"	TYPE	SIZE	MODEL #	QUANTITY	240.00 LBS
			TANK FS	4.0	SC-121110MA	1 LIGHT 1 FAN	



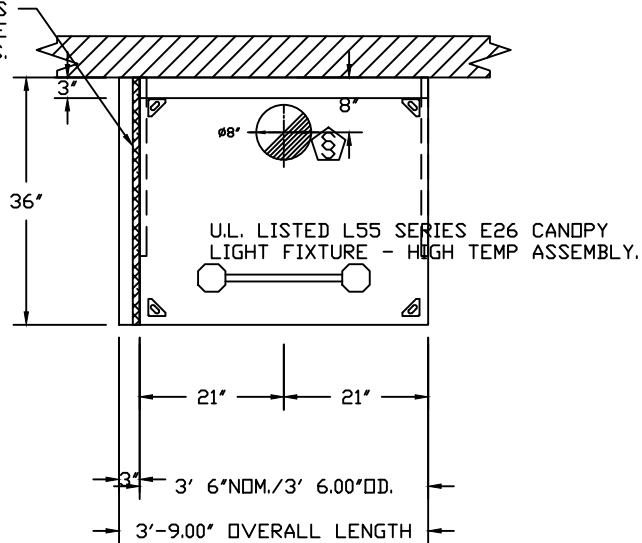
**ASSEMBLY INSTRUCTIONS**

HANGING ANGLE MUST BE SUPPORTED WITH 1/2" - 13 TPI GRADE 5 (MINIMUM) ALL-THREAD. SANDWICH HANGING ANGLES AND CEILING ANCHOR POINTS WITH 1/2" GRADE 5 (MINIMUM) STEEL FLAT WASHERS AND 1/2" - 13 TPI GRADE 5 (MINIMUM) HEX NUTS AS SHOWN. MUST USE DOUBLED HEX NUT CONFIGURATION BENEATH HOOD HANGING ANGLES AND ABOVE CEILING ANCHORS. MAINTAIN 1/4" OF EXPOSED THREADS BENEATH BOTTOM HEX NUT. TORQUE ALL HEX NUTS TO 57 FT-LBS.

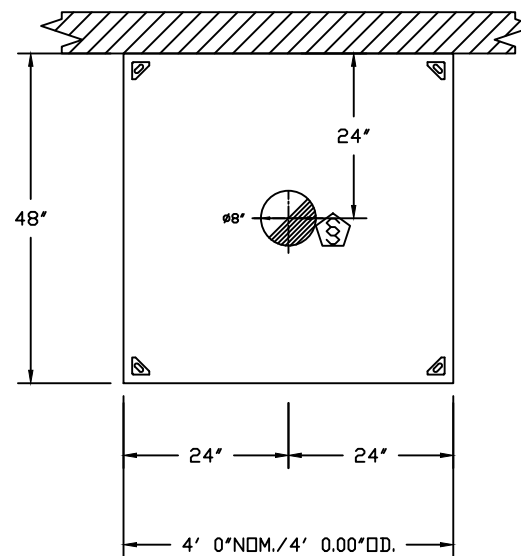


JOB Skyline (Tri County)	
LOCATION Cincinnati, OH, 45246	
DATE 4/11/2022	JOB # 5401674
DWG # 1	DRAWN BY jcirilli
REV.	SCALE 3/8" = 1'-0"

1" LAYER OF INSULATION  
FACTORY INSTALLED IN  
3.00' END STANDOFF MEETS  
0" REQUIREMENTS CLEARANCE  
TO COMBUSTIBLE SURFACES.



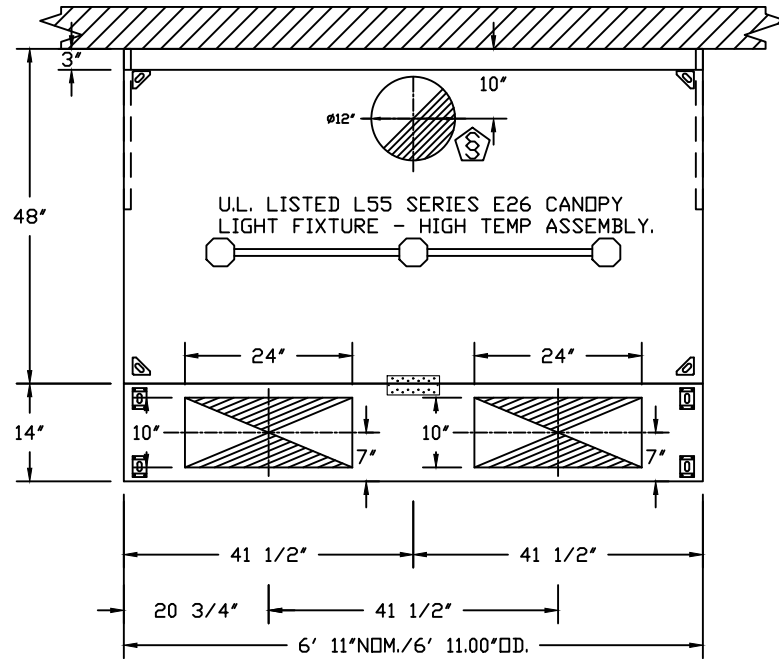
PLAN VIEW - HOOD #1 (HD 1 Fryer)  
3' 6.00" LONG 3650ELPX-2



PLAN VIEW - HOOD #3 (HD DISH)  
4' 0.00" LONG 4824ES-VHB-G

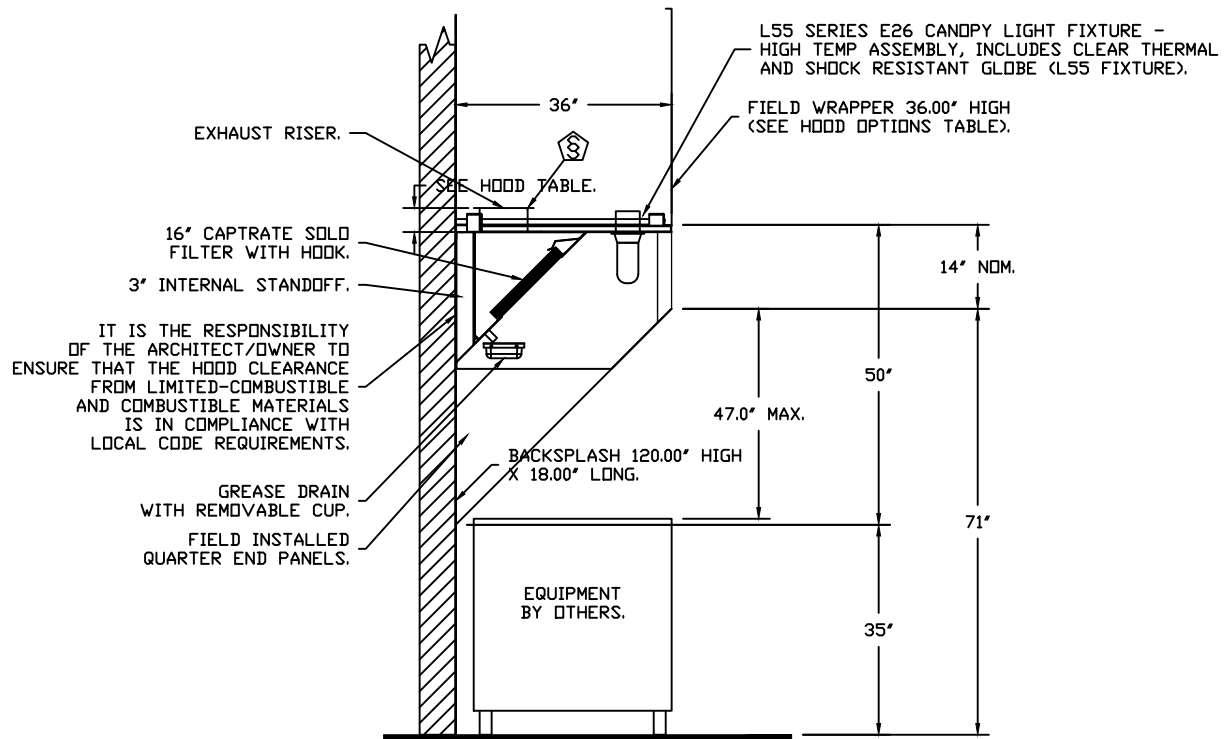


JOB Skyline (Tri County)	
LOCATION Cincinnati, OH, 45246	
DATE 4/11/2022	JOB # 5401674
DWG # 2	DRAWN BY jcirilli
REV.	SCALE 3/8" = 1'-0"



PLAN VIEW - HOOD #2 (HD 2 Kettle)  
 6' 11.00" LONG 4824EX-2-PSP-F

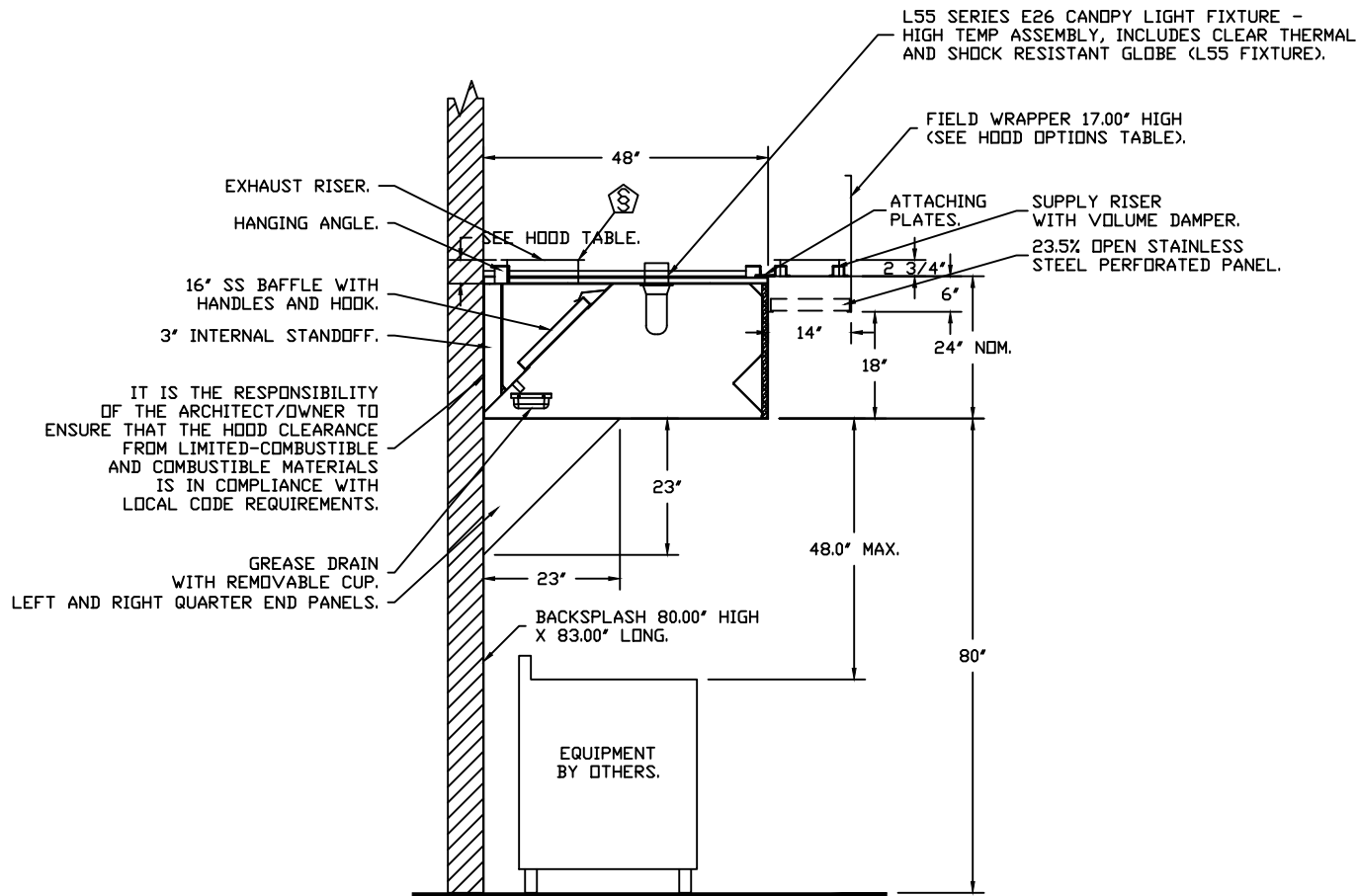
  		JOB Skyline (Tri County)	
		LOCATION Cincinnati, OH, 45246	
		DATE 4/11/2022	JOB # 5401674
		DWG # 3	DRAWN BY jcirilli
		REV.	SCALE 3/8" = 1'-0"



**SECTION VIEW - MODEL 3650ELPX-2  
HOOD - #1 (HD 1 Fryer)**



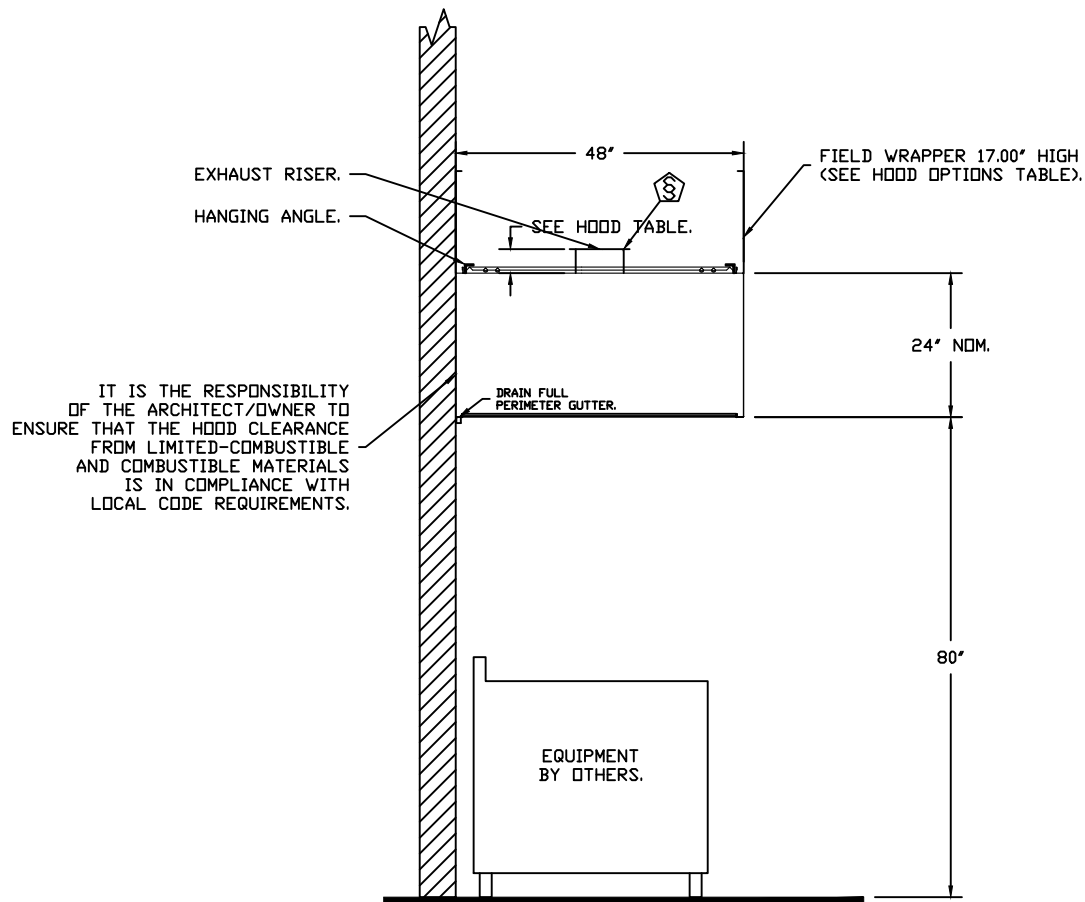
<i>JOB</i> Skyline (Tri County)	
<i>LOCATION</i> Cincinnati, OH, 45246	
<i>DATE</i> 4/11/2022	<i>JOB #</i> 5401674
<i>DWG #</i> 4	<i>DRAWN BY</i> jcirilli
<i>REV.</i>	<i>SCALE</i> 3/8" = 1'-0"



**SECTION VIEW - MODEL 4824EX-2-PSP-F  
HOOD - #2 (HD 2 Kettle)**



<i>JOB</i> Skyline (Tri County)	
<i>LOCATION</i> Cincinnati, OH, 45246	
<i>DATE</i> 4/11/2022	<i>JOB #</i> 5401674
<i>DWG #</i> 5	<i>DRAWN BY</i> jcirilli
<i>REV.</i>	<i>SCALE</i> 3/8' = 1'-0'



SECTION VIEW - MODEL 4824ES-VHB-G  
HOOD - #3 (HD DISH)



<i>JOB</i> Skyline (Tri County)	
<i>LOCATION</i> Cincinnati, OH, 45246	
<i>DATE</i> 4/11/2022	<i>JOB #</i> 5401674
<i>DWG #</i> 6	<i>DRAWN BY</i> jcirilli
<i>REV.</i>	<i>SCALE</i> 3/8" = 1'-0"

**EXHAUST FAN INFORMATION - JOB#5401674**

FAN UNIT NO	TAG	QTY	FAN UNIT MODEL #	MANUFACTURER	CFM	ESP	RPM	MOTOR ENCL	HP	BHP	PHASE	VOLT	FLA	DISCHARGE VELOCITY	WEIGHT (LBS)	SONES
1	EF 1 FRYER	1	EADU33H	ECON-AIR	648	0.800	1500	TEAD-ECM	0.333	0.2040	1	115	4.3	321 FPM	69	14.7
2	EF 2 KETTLE	1	EADU85H	ECON-AIR	1280	1.000	1225	TEAD-ECM	0.750	0.3240	1	115	8.9	405 FPM	81	10.3
4	EF DISH	1	EADU33H	ECON-AIR	500	0.500	1179	TEAD-ECM	0.333	0.0990	1	115	4.3	248 FPM	63	9.7

**MUA FAN INFORMATION - JOB#5401674**

FAN UNIT NO	TAG	QTY	FAN UNIT MODEL #	BLOWER	HOUSING	MIN CFM	DESIGN CFM	ESP	RPM	MOTOR ENCL	HP	BHP	PHASE	VOLT	FLA	MCA	MDCP	WEIGHT (LBS)	SONES
3	KMUA	1	E76	G7D	D.6	600	1100	0.300	1771	TEAD-ECM	1.000	0.5980	1	115	11.6	14.5A	25A	291	22

**GAS FIRED MAKE-UP AIR UNIT(S)**

FAN UNIT NO	TAG	INPUT BTUs	OUTPUT BTUs	TEMP RISE	REQUIRED INPUT GAS PRESSURE	GAS TYPE
3	KMUA	78328	72062	63°F	7 IN. W.C. - 14 IN. W.C.	NATURAL

**FAN OPTIONS**

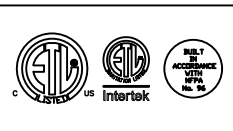
FAN UNIT NO	TAG	QTY	DESCRIPTION
1	EF 1 FRYER	1	GREASE BDX
		1	ECM WIRING PACKAGE - PWM SIGNAL FROM ECPM03 PREWIRE (TELCO MOTOR), CCW ROTATION
		1	2 YEAR PARTS WARRANTY
2	EF 2 KETTLE	1	ECM WIRING PACKAGE - PWM SIGNAL FROM ECPM03 PREWIRE (TELCO MOTOR), CCW ROTATION
		1	2 YEAR PARTS WARRANTY
3	KMUA	1	INLET PRESSURE GAUGE, 0-35"
		1	MANIFOLD PRESSURE GAUGE, -5 TO 15" WC
		1	ECM WIRING PACKAGE-SUPPLY - PWM SIGNAL FROM ECPM03 PREWIRE (TELCO MOTOR), CW ROTATION
4	EF DISH	1	ECM WIRING PACKAGE - MANUAL OR 0-10VDC REFERENCE SPEED CONTROL (TELCO MOTOR), CCW ROTATION
		1	2 YEAR PARTS WARRANTY

**FAN ACCESSORIES**

FAN UNIT NO	TAG	EXHAUST			SUPPLY			
		GREASE CUP	GRAVITY DAMPER	WALL MOUNT	SIDE DISCHARGE	GRAVITY DAMPER	MOTORIZED DAMPER	WALL MOUNT
1	EF 1 FRYER	YES						
2	EF 2 KETTLE							
3	KMUA							
4	EF DISH							

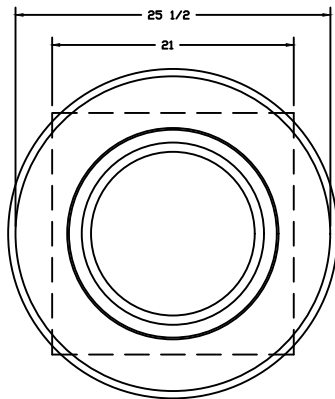
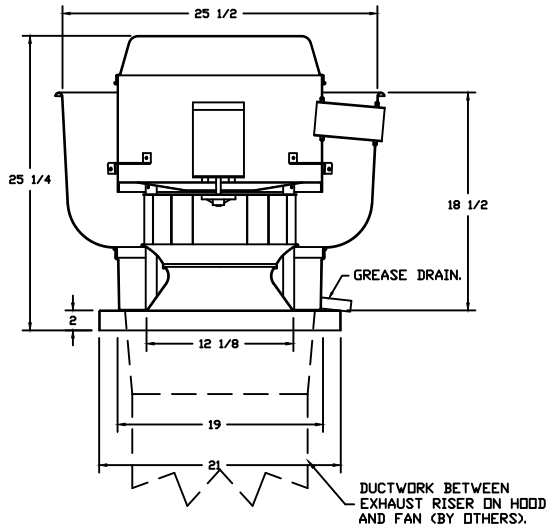
**CURB ASSEMBLIES**

NO	ON FAN	TAG	WEIGHT	ITEM	SIZE
1	# 1	EF 1 FRYER	34 LBS	CURB	19.500"W X 19.500"L X 24.000"H 6.000:12.000 PITCH ALONG LENGTH, RIGHT HINGED.
2	# 2	EF 2 KETTLE	41 LBS	CURB	23.000"W X 23.000"L X 24.000"H 6.000:12.000 PITCH ALONG LENGTH, RIGHT HINGED.
3	# 3	KMUA	50 LBS	CURB	19.500"W X 52.000"L X 16.000"H ALONG WIDTH, RIGHT INSULATED.
4	# 4	EF DISH	20 LBS	CURB	19.500"W X 19.500"L X 18.000"H 6.000:12.000 PITCH ALONG LENGTH, RIGHT.



<b>JOB</b> Skyline (Tri County)	
<b>LOCATION</b> Cincinnati, OH, 45246	
<b>DATE</b> 4/11/2022	<b>JOB #</b> 5401674
<b>DWG #</b> 7	<b>DRAWN BY</b> jcirilli
<b>REV.</b>	<b>SCALE</b> 3/8" = 1'-0"

FAN #1 EADU33H - EXHAUST FAN (EF 1 FRYER)



TOP VIEW

**FEATURES:**

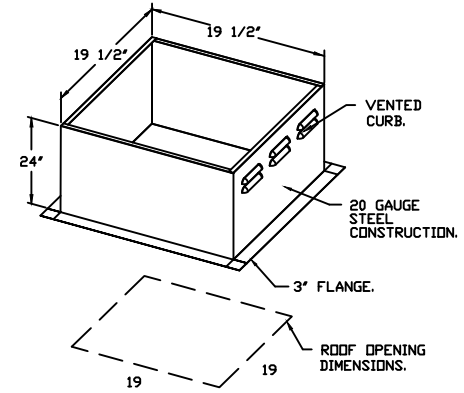
- DIRECT DRIVE CONSTRUCTION (NO BELTS/PULLEYS).
- ROOF MOUNTED FANS.
- RESTAURANT MODEL.
- UL705 AND UL762 AND ULC-S645
- VARIABLE SPEED CONTROL.
- INTERNAL WIRING.
- THERMAL OVERLOAD PROTECTION (SINGLE PHASE).
- HIGH HEAT OPERATION 300°F (149°C).
- GREASE CLASSIFICATION TESTING.
- NEMA 3R SAFETY DISCONNECT SWITCH.

**NORMAL TEMPERATURE TEST**  
 EXHAUST FAN MUST OPERATE CONTINUOUSLY WHILE EXHAUSTING AIR AT 300°F (149°C) UNTIL ALL FAN PARTS HAVE REACHED THERMAL EQUILIBRIUM, AND WITHOUT ANY DETERIORATING EFFECTS TO THE FAN WHICH WOULD CAUSE UNSAFE OPERATION.

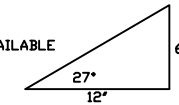
**ABNORMAL FLARE-UP TEST**  
 EXHAUST FAN MUST OPERATE CONTINUOUSLY WHILE EXHAUSTING BURNING GREASE VAPORS AT 600°F (316°C) FOR A PERIOD OF 15 MINUTES WITHOUT THE FAN BECOMING DAMAGED TO ANY EXTENT THAT COULD CAUSE AN UNSAFE CONDITION.

**OPTIONS**

GREASE BOX.  
 ECM WIRING PACKAGE - PWM SIGNAL FROM ECPM03 PREWIRE (TELCO MOTOR), CCW ROTATION.  
 2 YEAR PARTS WARRANTY.



PITCHED CURBS ARE AVAILABLE FOR PITCHED ROOFS.

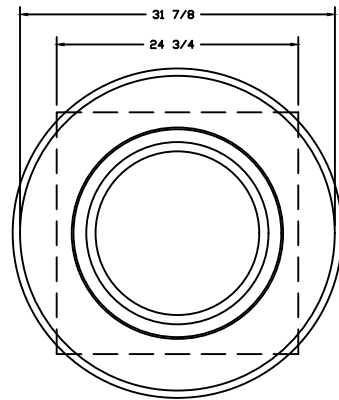
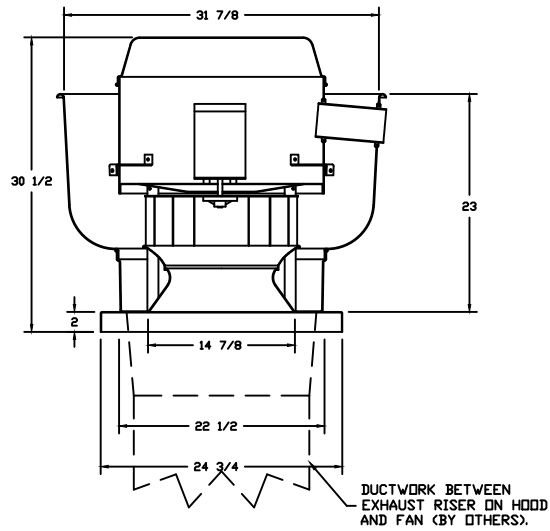


SPECIFY PITCH:  
 EXAMPLE: 7/12 PITCH = 30° SLOPE.



JOB Skyline (Tri County)	
LOCATION Cincinnati, OH, 45246	
DATE 4/11/2022	JOB # 5401674
DWG # 8	DRAWN BY jcirilli
REV.	SCALE 3/8" = 1'-0"

FAN #2 EADU85H - EXHAUST FAN (EF 2 KETTLE)



TOP VIEW

**FEATURES:**

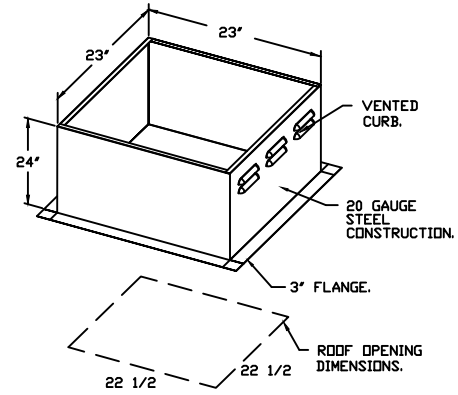
- DIRECT DRIVE CONSTRUCTION (NO BELTS/PULLEYS).
- ROOF MOUNTED FANS.
- RESTAURANT MODEL.
- UL705
- VARIABLE SPEED CONTROL.
- INTERNAL WIRING.
- THERMAL OVERLOAD PROTECTION (SINGLE PHASE).
- HIGH HEAT OPERATION 300°F (149°C).
- NEMA 3R SAFETY DISCONNECT SWITCH.

**NORMAL TEMPERATURE TEST**

EXHAUST FAN MUST OPERATE CONTINUOUSLY WHILE EXHAUSTING AIR AT 300°F (149°C) UNTIL ALL FAN PARTS HAVE REACHED THERMAL EQUILIBRIUM, AND WITHOUT ANY DETERIORATING EFFECTS TO THE FAN WHICH WOULD CAUSE UNSAFE OPERATION.

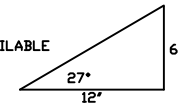
**OPTIONS**

ECM WIRING PACKAGE - PWM SIGNAL FROM ECPM03 PREWIRE (TELCO MOTOR), CCW ROTATION. 2 YEAR PARTS WARRANTY.



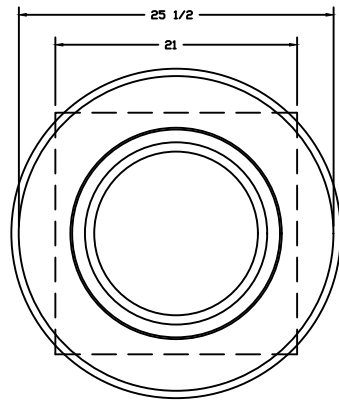
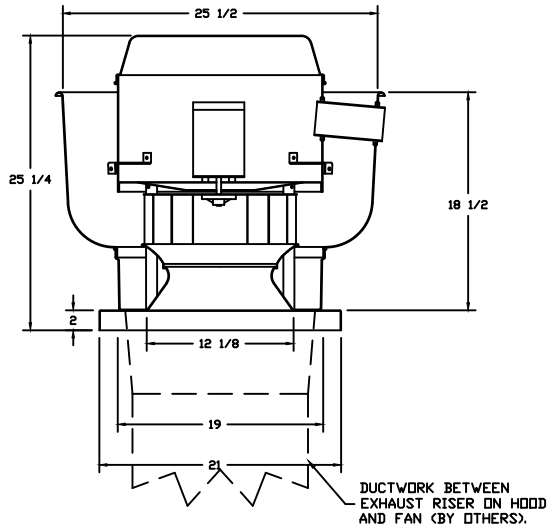
PITCHED CURBS ARE AVAILABLE FOR PITCHED ROOFS.

SPECIFY PITCH:  
EXAMPLE: 7/12 PITCH = 30° SLOPE.



JOB Skyline (Tri County)	
LOCATION Cincinnati, OH, 45246	
DATE 4/11/2022	JOB # 5401674
DWG # 8	DRAWN BY jcirilli
REV.	SCALE 3/8" = 1'-0"

**FAN #4 EADU33H - EXHAUST FAN (EF DISH)**



**TOP VIEW**

**FEATURES:**

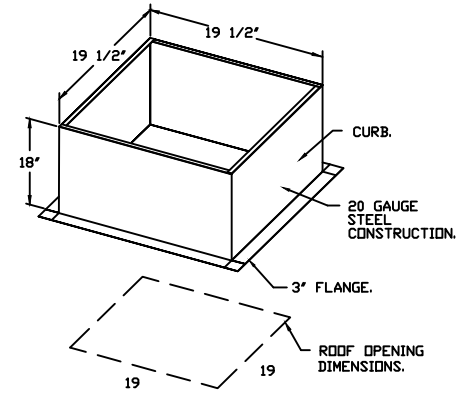
- DIRECT DRIVE CONSTRUCTION (NO BELTS/PULLEYS).
- ROOF MOUNTED FANS.
- RESTAURANT MODEL.
- UL705
- VARIABLE SPEED CONTROL.
- INTERNAL WIRING.
- THERMAL OVERLOAD PROTECTION (SINGLE PHASE).
- HIGH HEAT OPERATION 300°F (149°C).
- NEMA 3R SAFETY DISCONNECT SWITCH.

**NORMAL TEMPERATURE TEST**

EXHAUST FAN MUST OPERATE CONTINUOUSLY WHILE EXHAUSTING AIR AT 300°F (149°C) UNTIL ALL FAN PARTS HAVE REACHED THERMAL EQUILIBRIUM, AND WITHOUT ANY DETERIORATING EFFECTS TO THE FAN WHICH WOULD CAUSE UNSAFE OPERATION.

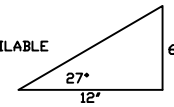
**OPTIONS**

ECM WIRING PACKAGE - MANUAL OR 0-10VDC REFERENCE SPEED CONTROL (TELCO MOTOR), CCW ROTATION.  
2 YEAR PARTS WARRANTY.



PITCHED CURBS ARE AVAILABLE FOR PITCHED ROOFS.

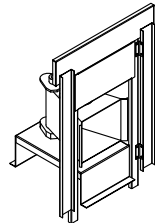
SPECIFY PITCH:  
EXAMPLE: 7/12 PITCH = 30° SLOPE.



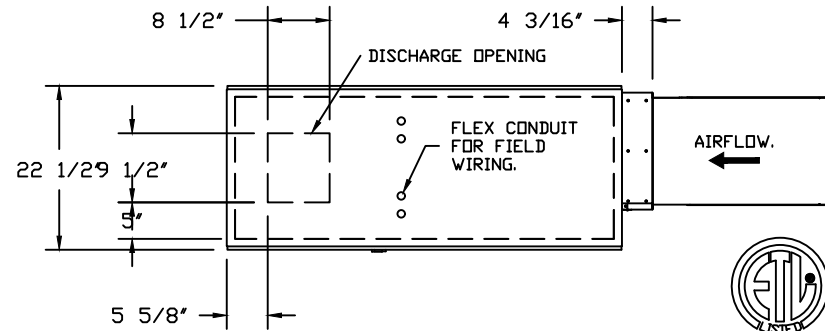
<i>JOB</i> Skyline (Tri County)	
<i>LOCATION</i> Cincinnati, OH, 45246	
<i>DATE</i> 4/11/2022	<i>JOB #</i> 5401674
<i>DWG #</i> 9	<i>DRAWN BY</i> jcirilli
<i>REV.</i>	<i>SCALE</i> 3/8" = 1'-0"

SUPPLY SIDE HEATER INFORMATION:

WINTER TEMPERATURE = 12°F. TEMP. RISE = 63°F.  
 BTUs CALCULATED OFF ACTUAL AIR DENSITY.  
 OUTPUT BTUs AT ALTITUDE OF 0.0 FT. = 74036.  
 INPUT BTUs AT ALTITUDE OF 0.0 FT. = 80474.  
 OUTPUT BTUs AT ALTITUDE OF 746 FT. = 72062.  
 INPUT BTUs AT ALTITUDE OF 746 FT. = 78328.

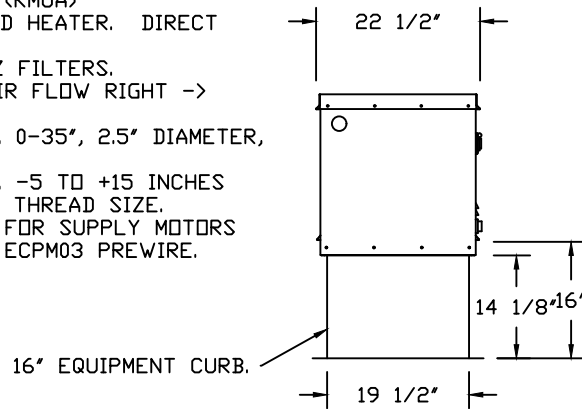


DIRECT FIRED (DF) PROFILE PLATE ASSEMBLY

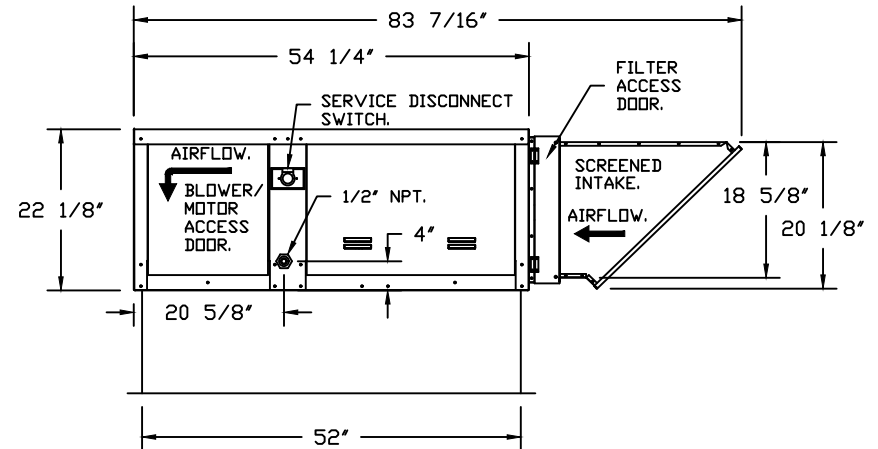


FAN #3 E76D - HEATER (KMUA)

1. LOW CFM DIRECT FIRED HEATER. DIRECT DRIVE.
2. INTAKE HOOD WITH EZ FILTERS.
3. DOWN DISCHARGE - AIR FLOW RIGHT -> LEFT.
4. GAS PRESSURE GAUGE, 0-35", 2.5" DIAMETER, 1/4" THREAD SIZE.
5. GAS PRESSURE GAUGE, -5 TO +15 INCHES WC., 2.5" DIAMETER, 1/4" THREAD SIZE.
6. ECM WIRING PACKAGE FOR SUPPLY MOTORS WITH PWM SIGNAL FROM ECPM03 PREWIRE.



ROOF OPENING 2" SMALLER THAN CURB DIMENSION.



JOB Skyline (Tri County)	
LOCATION Cincinnati, OH, 45246	
DATE 4/11/2022	JOB # 5401674
DWG # 12	DRAWN BY jcirilli
REV.	SCALE 3/8" = 1'-0"