

FOR QUESTIONS, CALL THE
Dallas Office
REGION 45
PHONE: (214) 220 - 3999
EMAIL: reg45@captivaire.com

PATENT NUMBERS

AC-PSP (UNITED STATES) - US PATENT 7963830 B2.
AC-PSP WALL (CANADA) - CA PATENT 2820509.
AC-PSP ISLAND (CANADA) - CA PATENT 2520330.
EXHAUST HOODS ND-2/BD-2/SND-2 (CANADA) - CA PATENT 2520435 C.

HOOD INFORMATION - JOB#7545348

HOOD NO	TAG	MODEL	MANUFACTURER	LENGTH	MAX COOKING TEMP	TYPE	APPLIANCE DUTY	DESIGN CFM/FT	TOTAL EXH CFM	EXHAUST PLENUM RISER(S)				TOTAL SUPPLY CFM	HOOD CONSTRUCTION	HOOD CONFIG				
										WIDTH	LENG	HEIGHT	DIA			CFM	VEL	SP	END TO END	ROW
1	48 PREP	6030 ND-2	CAPTIVEAIRE	10' 0"	600 DEG	I	HEAVY	200	2000			4'	16"	2000	1432	-0.582'	0	430 SS WHERE EXPOSED	LEFT	ALONE
2	48 PREP	6030 ND-2	CAPTIVEAIRE	11' 0"	600 DEG	I	HEAVY	200	2200			4'	16"	2200	1576	-0.689'	0	430 SS WHERE EXPOSED	RIGHT	ALONE
3	99 CHURRASCARIA	6030 ND-2-PSP-F	CAPTIVEAIRE	15' 10"	600 DEG	I	HEAVY	316	5000			4'	16"	2500	1790	-1.148'	3450	430 SS WHERE EXPOSED	ALONE	ALONE

HOOD INFORMATION

HOOD NO	TAG	TYPE	FILTER(S)				LIGHT(S)				UTILITY CABINET(S)				FIRE SYSTEM PIPING	HOOD HANGING WEIGHT	
			QTY	HEIGHT	LENGTH	EFFICIENCY @ 7 MICRONS	QTY	TYPE	WIRE GUARD	LOCATION	SIZE	TYPE	SIZE	ELECTRICAL MODEL #			SWITCHES QUANTITY
1	48 PREP	CAPTRATE SOLD FILTER	7	20"	16'	85% SEE FILTER SPEC	3	RECESSED ROUND	NO							YES	616 LBS
2	48 PREP	CAPTRATE SOLD FILTER	8	20"	16'	85% SEE FILTER SPEC	3	RECESSED ROUND	NO							YES	668 LBS
3	99 CHURRASCARIA	CAPTRATE SOLD FILTER	12	20"	16'	85% SEE FILTER SPEC	4	RECESSED ROUND	NO						YES	1121 LBS	

HOOD OPTIONS

HOOD NO	TAG	OPTION
1	48 PREP	BACKSPLASH 108.00" HIGH X 306.00" LONG 430 SS VERTICAL.
		RIGHT SIDESPLASH 108.00" HIGH X 60.00" LONG 430 SS VERTICAL.
		BACKSPLASH - INSIDE CORNER 108.00" HIGH X 2.00" LEG LENGTH 430 SS VERTICAL.
		INSULATION FOR TOP OF HOOD.
2	48 PREP	RIGHT END STANDOFF (FINISHED) 1" WIDE 60" LONG INSULATED.
		INSULATION FOR TOP OF HOOD.
		INSULATION FOR BACK OF HOOD.
		LEFT END STANDOFF (FINISHED) 1" WIDE 60" LONG INSULATED.
3	99 CHURRASCARIA	BACKSPLASH 108.00" HIGH X 192.00" LONG 430 SS VERTICAL.
		LEFT SIDESPLASH 108.00" HIGH X 60.00" LONG 430 SS VERTICAL.
		RIGHT SIDESPLASH 108.00" HIGH X 60.00" LONG 430 SS VERTICAL.
		LEFT END STANDOFF (FINISHED) 1" WIDE 60" LONG INSULATED.
		RIGHT END STANDOFF (FINISHED) 1" WIDE 60" LONG INSULATED.
		INSULATION FOR TOP OF HOOD.
		STRUCTURAL FRONT PANEL.
		INSULATION FOR BACK OF HOOD.

PERFORATED SUPPLY PLENUM(S)

HOOD NO	TAG	POS	LENGTH	WIDTH	HEIGHT	TYPE	RISER(S)				
							WIDTH	LENG	DIA	CFM	SP
3	99 CHURRASCARIA	Front	192'	16'	6'	MUA	12"	28"		862	0.274'
						MUA	12"	28"		862	0.274'
						MUA	12"	28"		862	0.274'
						MUA	12"	28"		862	0.274'

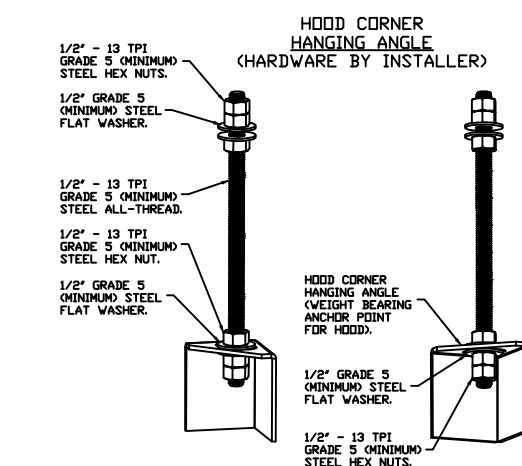
WALL-MOUNT UTILITY CABINET

HOOD NO	LOCATION	SIZE	UTILITY CABINET(S)				WEIGHT
			TYPE	SIZE	ELECTRICAL MODEL #	SWITCHES QUANTITY	
1	WALL MNT	12"x54"x24"	TANK FS	4.0/4.0/4.0	DCV-2111	1 LIGHT 1 FAN	440.00 LBS
3	WALL MNT	12"x72"x24"	TANK FS	4.0/4.0/4.0/4.0	DCV-2111	1 LIGHT 1 FAN	540.00 LBS

CLEARANCE TO COMBUSTIBLES

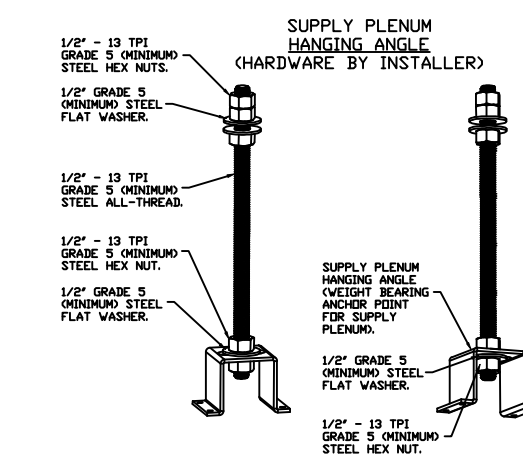
HOODS #	SURFACE	*CLEARANCE
1	TOP	0"
	FRONT	0"
	BACK	0"
	LEFT	18"
	RIGHT	18"
2	TOP	0"
	FRONT	0"
	BACK	0"
	LEFT	18"
	RIGHT	0"
3	TOP	0"
	FRONT	0"
	BACK	0"
	LEFT	0"
	RIGHT	0"

- *0" CLEARANCE TO COMBUSTIBLES CONFORMS TO UL710 STANDARD.



ASSEMBLY INSTRUCTIONS

HANGING ANGLE MUST BE SUPPORTED WITH 1/2" - 13 TPI GRADE 5 (MINIMUM) ALL-THREAD, SANDWICH HANGING ANGLES AND CEILING ANCHOR POINTS WITH 1/2" GRADE 5 (MINIMUM) STEEL FLAT WASHERS AND 1/2" - 13 TPI GRADE 5 (MINIMUM) HEX NUTS AS SHOWN. MUST USE DOUBLED HEX NUT CONFIGURATION BENEATH HOOD HANGING ANGLES AND ABOVE CEILING ANCHORS. MAINTAIN 1/4" OF EXPOSED THREADS BENEATH BOTTOM HEX NUT. TORQUE ALL HEX NUTS TO 57 FT-LBS.

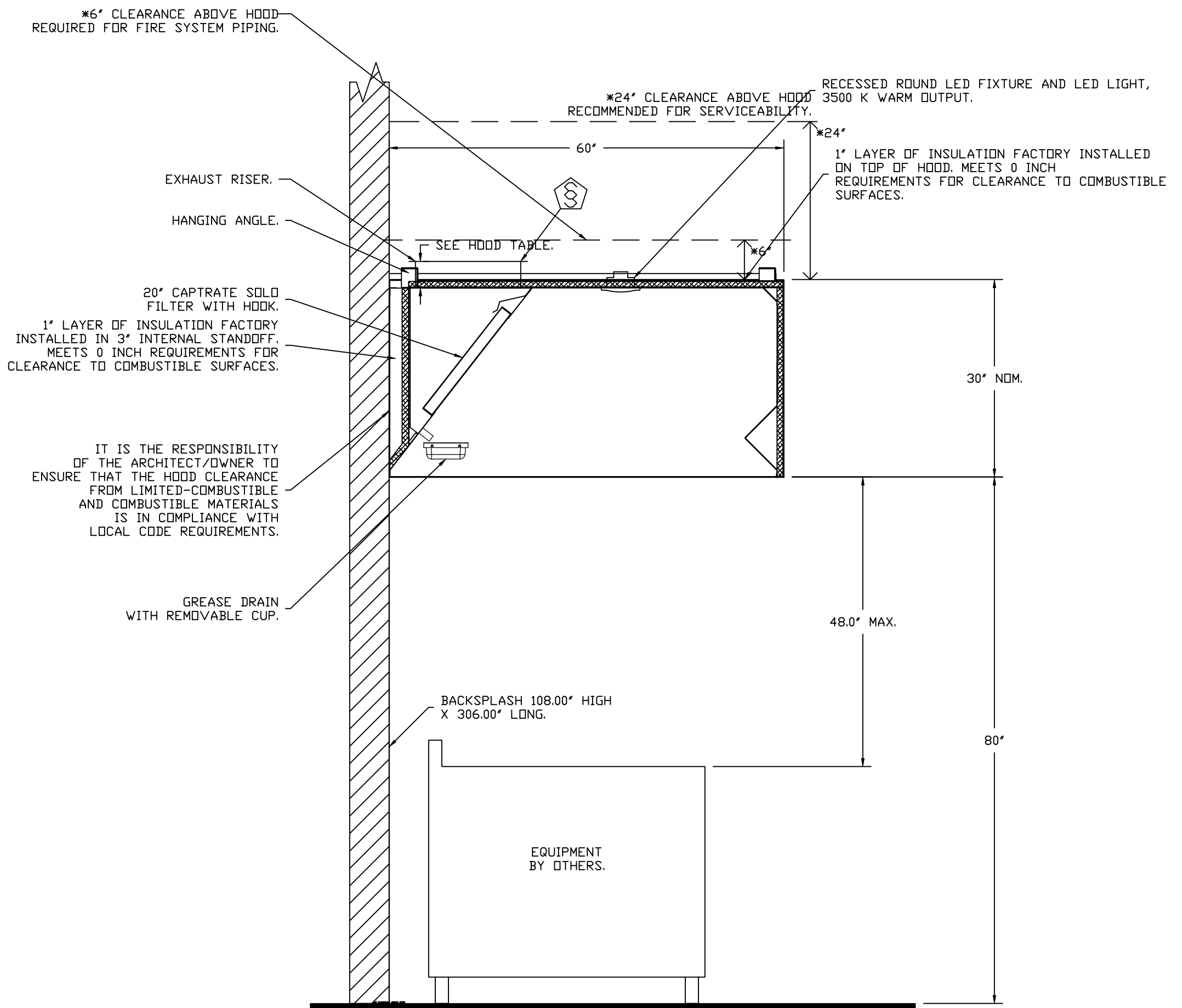
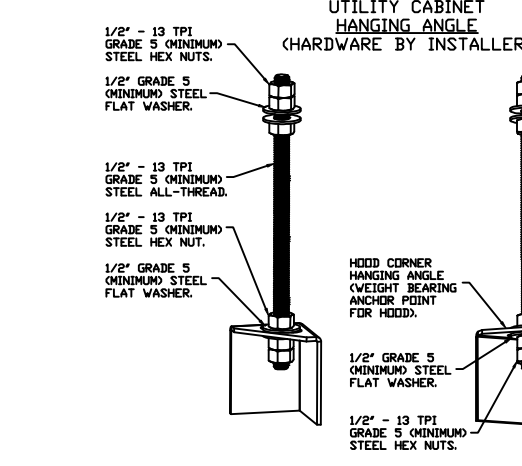


ASSEMBLY INSTRUCTIONS

HANGING ANGLE MUST BE SUPPORTED WITH 1/2" - 13 TPI GRADE 5 (MINIMUM) ALL-THREAD, SANDWICH HANGING ANGLES AND CEILING ANCHOR POINTS WITH 1/2" GRADE 5 (MINIMUM) STEEL FLAT WASHERS AND 1/2" - 13 TPI GRADE 5 (MINIMUM) HEX NUTS AS SHOWN. MUST USE DOUBLED HEX NUT CONFIGURATION ABOVE CEILING ANCHORS. SINGLE HEX NUT BENEATH HANGING ANGLE IS ACCEPTABLE FOR PSP HANGING ANGLES. MAINTAIN 1/4" OF EXPOSED THREADS BENEATH BOTTOM HEX NUT. TORQUE ALL HEX NUTS TO 57 FT-LBS.

WALL-MOUNT UTILITY CABINET ASSEMBLY INSTRUCTIONS

CABINET TO BE HUNG BY OTHERS. SEE UTILITY CABINET SCHEDULE FOR CABINET SIZE.
HANGING ANGLE MUST BE SUPPORTED WITH 1/2" - 13 TPI GRADE 5 (MINIMUM) ALL-THREAD, SANDWICH HANGING ANGLES AND CEILING ANCHOR POINTS WITH 1/2" GRADE 5 (MINIMUM) STEEL FLAT WASHERS AND 1/2" - 13 TPI GRADE 5 (MINIMUM) HEX NUTS AS SHOWN. MUST USE DOUBLED HEX NUT CONFIGURATION BENEATH HOOD HANGING ANGLES AND ABOVE CEILING ANCHORS. MAINTAIN 1/4" OF EXPOSED THREADS BENEATH BOTTOM HEX NUT. TORQUE ALL HEX NUTS TO 57 FT-LBS.



SECTION VIEW - MODEL 6030ND-2
HOOD - #1 (48 PREP)

REVISIONS

DESCRIPTION	DATE:

CAPTIVEAIRE

Dallas Office
1901 Royal Lane Suite 101, DALLAS, TX 75229 PHONE: (214) 220 - 3999 FAX: 2142200099 EMAIL: reg45@captivaire.com

Fogo de Chao Princeton NJ
Gilbert, AZ, 08540

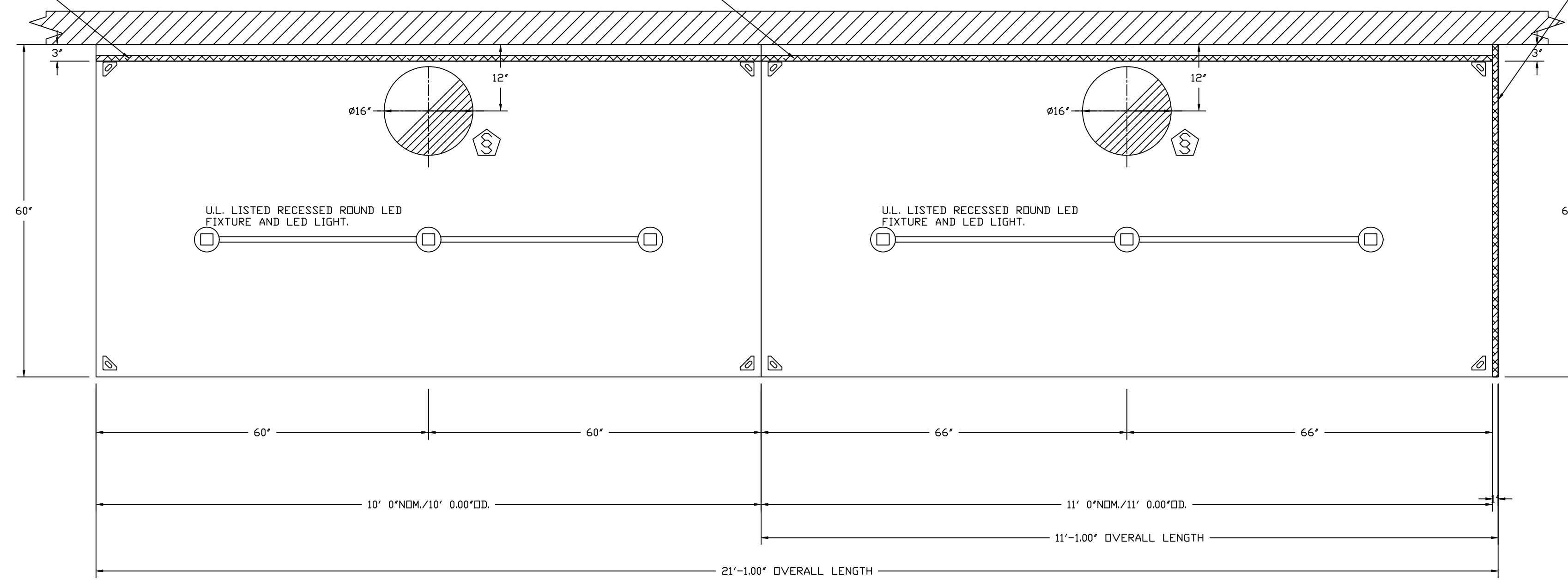
DATE: 6/13/2025
DWG.#: 7545348
DRAWN BY: DJL-45
SCALE: 3/4" = 1'-0"
MASTER DRAWING

SHEET NO. 1

1" LAYER OF INSULATION FACTORY
INSTALLED IN INTERNAL BACK STANDOFF.
MEETS 0 INCH REQUIREMENTS FOR
CLEARANCE TO COMBUSTIBLE SURFACES.

1" LAYER OF INSULATION FACTORY
INSTALLED IN INTERNAL BACK STANDOFF.
MEETS 0 INCH REQUIREMENTS FOR
CLEARANCE TO COMBUSTIBLE SURFACES.

1" LAYER OF INSULATION
FACTORY INSTALLED IN
1.00" END STANDOFF MEETS
0" REQUIREMENTS CLEARANCE
TO COMBUSTIBLE SURFACES.



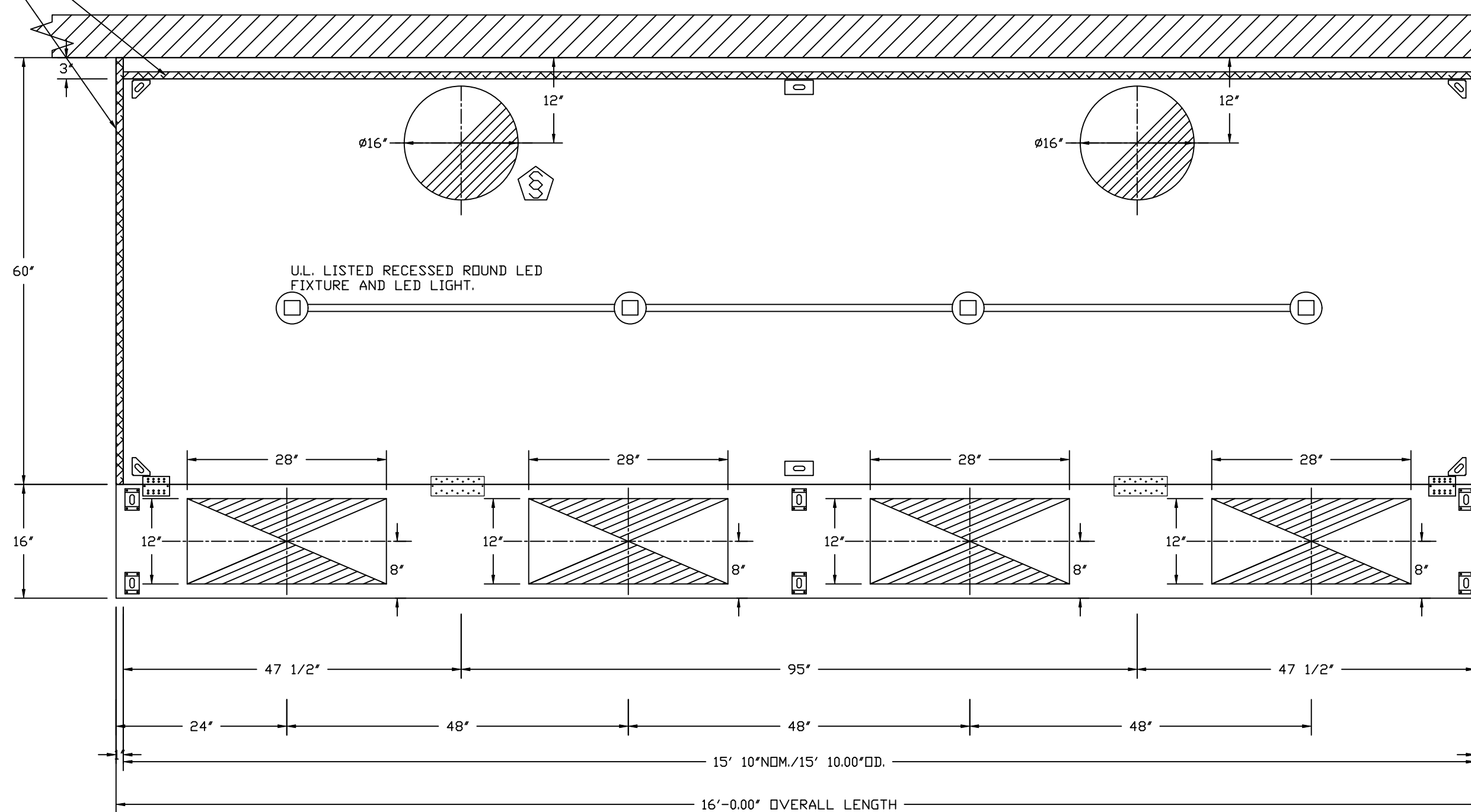
PLAN VIEW - HOOD #1 (48 PREP)
10' 0.00" LONG 6030ND-2

PLAN VIEW - HOOD #2 (48 PREP)
11' 0.00" LONG 6030ND-2

1" LAYER OF INSULATION FACTORY
INSTALLED IN INTERNAL BACK STANDOFF.
MEETS 0 INCH REQUIREMENTS FOR
CLEARANCE TO COMBUSTIBLE SURFACES.

1" LAYER OF INSULATION
FACTORY INSTALLED IN
1.00" END STANDOFF MEETS
0" REQUIREMENTS CLEARANCE
TO COMBUSTIBLE SURFACES.

1" LAYER OF INSULATION
FACTORY INSTALLED IN
1.00" END STANDOFF MEETS
0" REQUIREMENTS CLEARANCE
TO COMBUSTIBLE SURFACES.



PLAN VIEW - HOOD #3 (99 CHURRASCARIA)
15' 10.00" LONG 6030ND-2-PSP-F
NOTE: ADDITIONAL HANGING ANGLES PROVIDED FOR HOODS 12' AND LONGER.

*6" CLEARANCE ABOVE HOOD
REQUIRED FOR FIRE SYSTEM PIPING.

*24" CLEARANCE ABOVE HOOD
RECOMMENDED FOR SERVICEABILITY.

RECESSED ROUND LED FIXTURE AND LED LIGHT,
3500 K WARM OUTPUT.

1" LAYER OF INSULATION FACTORY INSTALLED
ON TOP OF HOOD. MEETS 0 INCH
REQUIREMENTS FOR CLEARANCE TO COMBUSTIBLE
SURFACES.

1" LAYER OF INSULATION
FACTORY INSTALLED IN
1.00" END STANDOFF MEETS
0" REQUIREMENTS CLEARANCE
TO COMBUSTIBLE SURFACES.

EXHAUST RISER.

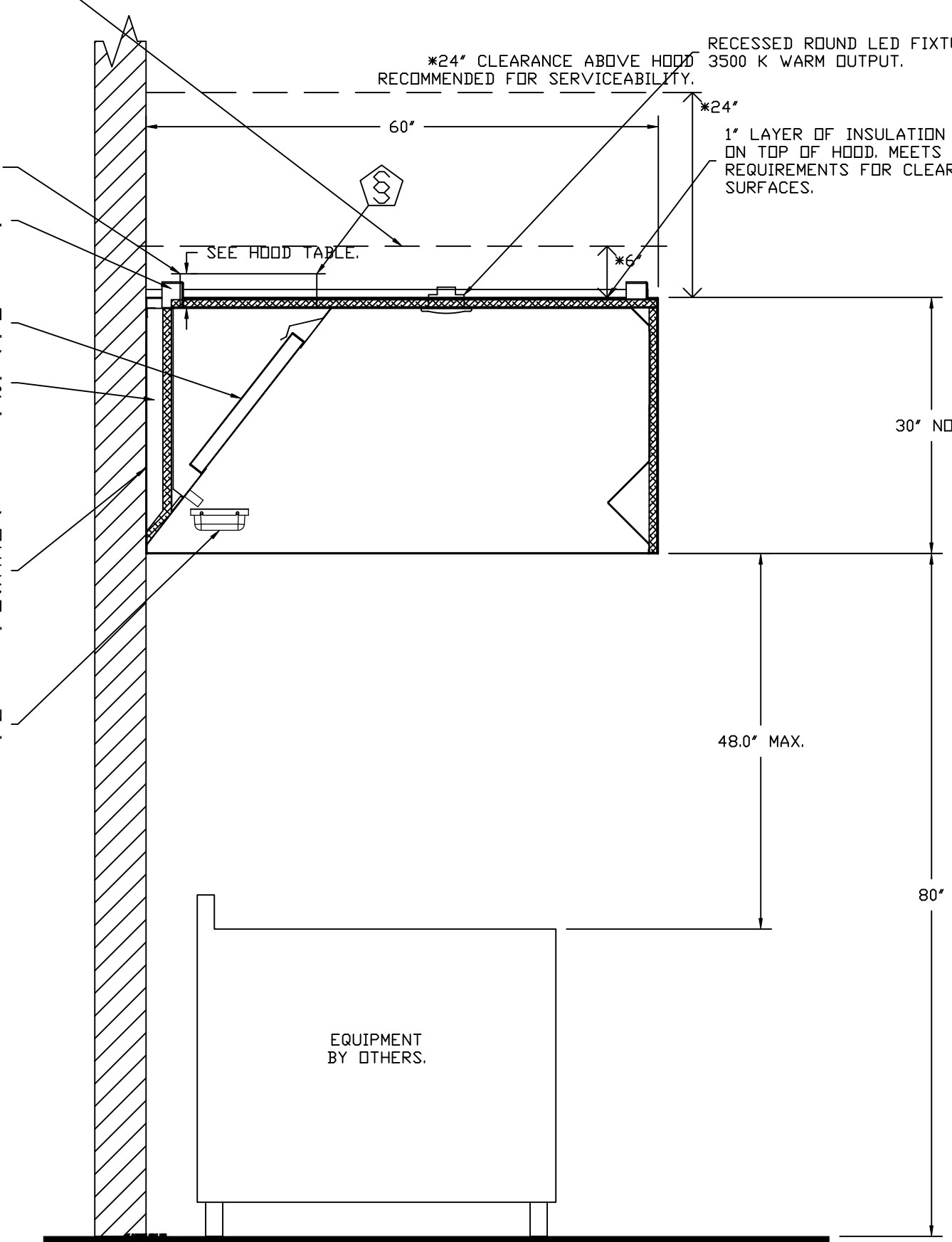
HANGING ANGLE.

20" CAPRATE SOLID
FILTER WITH HOOK.

1" LAYER OF INSULATION FACTORY
INSTALLED IN 3" INTERNAL STANDOFF.
MEETS 0 INCH REQUIREMENTS FOR
CLEARANCE TO COMBUSTIBLE SURFACES.

IT IS THE RESPONSIBILITY
OF THE ARCHITECT/OWNER TO
ENSURE THAT THE HOOD CLEARANCE
FROM LIMITED-COMBUSTIBLE
AND COMBUSTIBLE MATERIALS
IS IN COMPLIANCE WITH
LOCAL CODE REQUIREMENTS.

GREASE DRAIN
WITH REMOVABLE CUP.



SECTION VIEW - MODEL 6030ND-2
HOOD - #2 (48 PREP)

REVISIONS	
DESCRIPTION	DATE

www.captive.com
www.captive.com

CAPTIVE

Dallas Office

1901 Royal Lane Suite 101, DALLAS, TX 75229 PHONE: (214) 220-3999 FAX: 2142200099 EMAIL: req45@captive.com

Fogo de Chao Princeton NJ
Gilbert, AZ, 08540

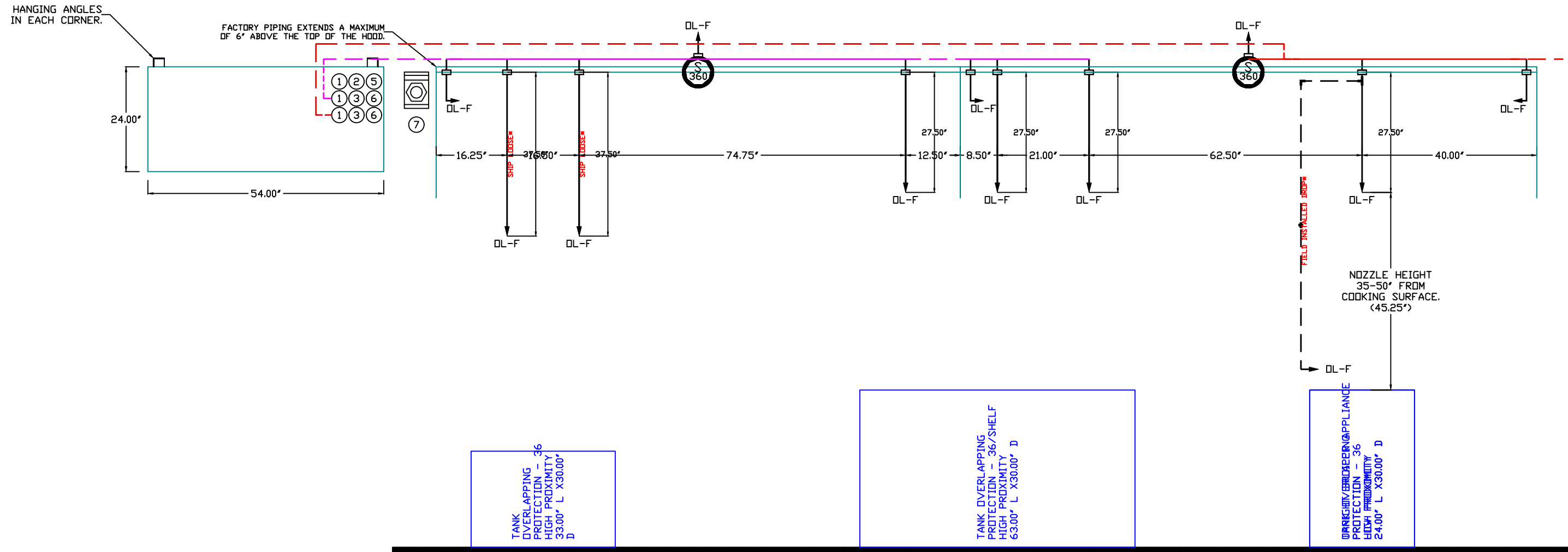
DATE: 6/13/2025
DWG.#: 7545348
DRAWN BY: DJL-45
SCALE: 3/4" = 1'-0"
MASTER DRAWING

SHEET NO.
2

- SYSTEM REQUIRES A MINIMUM OF 7 FT OF EQUIVALENT PIPE LENGTH BETWEEN TANK AND NEAREST APPLIANCE NOZZLE FOR MOST APPLIANCES. EACH 90 DEGREE ELBOW ADDS 13 FT OF EQUIVALENT LENGTH. SEE MANUAL FOR DETAILS.

LEGEND - FIRE CABINET TANK SYSTEM

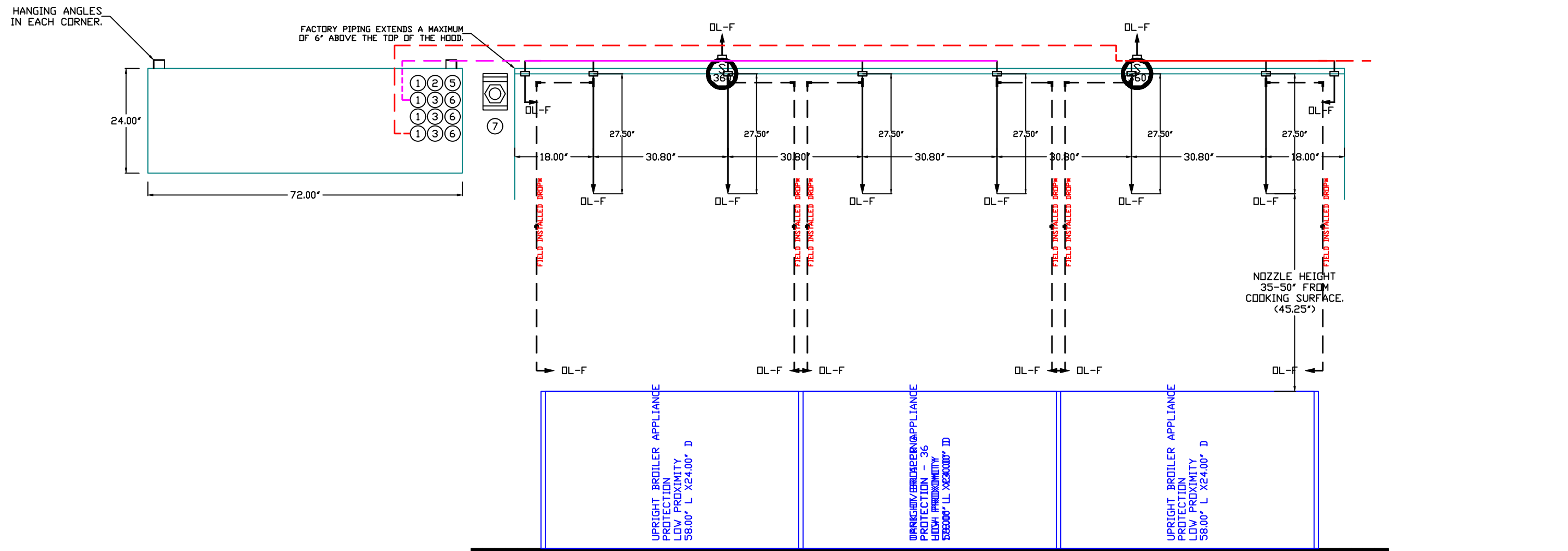
- 1 4 GALLON TANK.
- 2 PRIMARY ACTUATOR RELEASE.
- 3 SECONDARY ACTUATOR RELEASE.
- 4 PRESSURE SUPERVISION SWITCH.
- 5 PRIMARY HOSE ASSEMBLY.
- 6 SECONDARY HOSE ASSEMBLY.
- 7 REMOTE MANUAL ACTUATION DEVICE.



- SYSTEM REQUIRES A MINIMUM OF 7 FT OF EQUIVALENT PIPE LENGTH BETWEEN TANK AND NEAREST APPLIANCE NOZZLE FOR MOST APPLIANCES. EACH 90 DEGREE ELBOW ADDS 13 FT OF EQUIVALENT LENGTH. SEE MANUAL FOR DETAILS.

LEGEND - FIRE CABINET TANK SYSTEM

- 1 4 GALLON TANK.
- 2 PRIMARY ACTUATOR RELEASE.
- 3 SECONDARY ACTUATOR RELEASE.
- 4 PRESSURE SUPERVISION SWITCH.
- 5 PRIMARY HOSE ASSEMBLY.
- 6 SECONDARY HOSE ASSEMBLY.
- 7 REMOTE MANUAL ACTUATION DEVICE.



INCLUDES: FIELD INSTALLATION AND HOOKUP DURING NORMAL BUSINESS HOURS BY CERTIFIED INSTALLERS ONLY IN THE LOCATION NOTED ABOVE. TWO SITE VISITS ONLY ONE VISIT TO SET PULL STATION & SYSTEM HOOKUP AND ONE VISIT FOR ONE TEST. ADDITIONAL VISITS WILL RESULT IN ADDITIONAL CHARGES. ONE MECHANICAL OR ELECTRICAL GAS VALVE PER SYSTEM AT A MAXIMUM SIZE OF 2" PERMIT, AND SYSTEM TEST. EXCLUDES: UNION LABOR & PREVAILING WAGE GLABOR & WAGES WILL BE ADDED IF APPLICABLE. GAS VALVE INSTALLATION, ELECTRICAL HOOKUP AND CONNECTIONS, HANGING OF FIRE CABINET, SHUNT TRIP, HANDHELD EXTINGUISHERS, ON-SITE RE-PIPING DUE TO EQUIPMENT LAYOUT CHANGES.

- NOTES**
- FIELD PIPE DROPS AS SHOWN
 - PIPING, ELBOWS, TEES, AND NOZZLES SUPPLIED BY GAS.
 - FIELD INSTALLED DROP: FACTORY WILL PROVIDE QTY 2 60IN LONG PIECES OF CHROME PLATED PIPING SHIPPED LOOSE TO BE FIELD-INSTALLED.
 - SHIP LOOSE DROP: FACTORY WILL PROVIDE THE EXACT CHROME PIPE LENGTH NEEDED SHIPPED LOOSE TO BE FIELD-INSTALLED.
 - RELOCATE NOZZLES IF FLOW PATTERN IS BLOCKED BY SHELVING, SALAMANDERS, ETC.
 - OVERLAPPING COVERAGE SHALL NOT BE USED ON ANY APPLIANCE WITH AN OBSTRUCTION.
 - IF APPLICABLE, EXTENDED PRE-PIPED DROPS ARE SHIPPED LOOSE.
 - FACTORY PIPING EXTENDS A MAXIMUM OF 6' ABOVE THE TOP OF THE HOOD.

- APPLIANCE DIMENSIONS LISTED REPRESENT THE COOKING SURFACE SIZE, NOT THE OVERALL APPLIANCE SIZE.
- THIS PRE-ENGINEERED FIRE SYSTEM COMPLIES WITH UL 300 REQUIREMENTS.

- DL-F NOZZLE PART NUMBER REPLACES 3070-3/8H-10-SS
 JOB #: 7545348
 JOB NAME: FOGO DE CHAD PRINCETON NJ.

SYSTEM SIZE: TANK-SP-3-WC DESIGN FP: 51. MAXIMUM FP: 60.
 HOOD # 1 10' 0.00" LONG x 60" WIDE x 30" HIGH.
 RISER # 1 SIZE: 16" DIA.
 HOOD # 1 METAL BLOW-OFF CAPS INCLUDED.
 HOOD # 2 11' 0.00" LONG x 60" WIDE x 30" HIGH.
 RISER # 1 SIZE: 16" DIA.
 HOOD # 2 METAL BLOW-OFF CAPS INCLUDED.

- HEAVY-DUTY APPLIANCES (RATED 600°F) WILL REQUIRE AN ADDITIONAL DOWNSTREAM FIRESTAT IN THE EVENT THAT THE DUCTWORK CONTAINS ANY HORIZONTAL RUNS OVER 25 FT IN LENGTH.
- MEDIUM TO LIGHT-DUTY APPLIANCES (RATED 450°F) WILL NOT REQUIRE ANY ADDITIONAL DOWNSTREAM DETECTION.

AGENT DISTRIBUTION PIPING LIMITATIONS	
PIPE SECTION	MAX PIPE LENGTH (FT)
MAX SUPPLY LINE TO FIRST OVERLAPPING NOZZLE	42
OVERLAPPING NOZZLE APPLIANCE BRANCH	10
DEDICATED NOZZLE APPLIANCE BRANCH	10

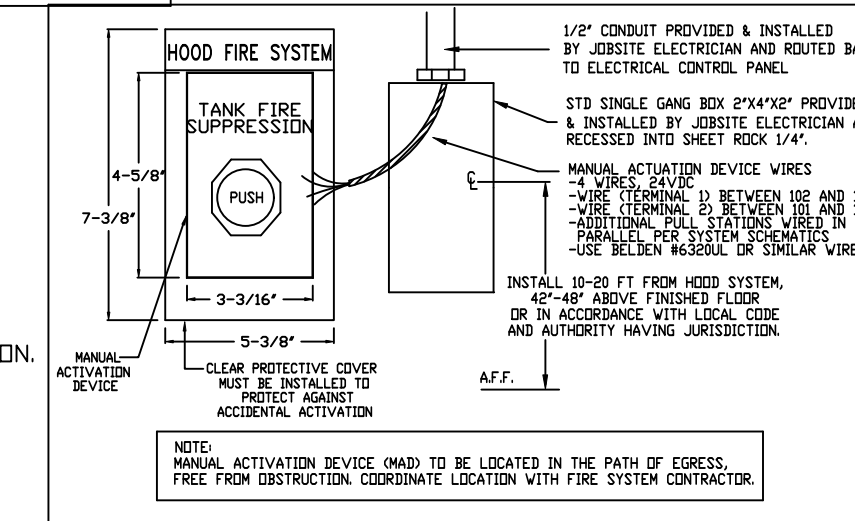
FIRE SYSTEM INFORMATION - JOB#7545348

FIRE SYSTEM NO	TAG	TYPE	SIZE	MAX FP	DESIGN FP	INSTALLATION	
						SYSTEM	LOCATION ON HOOD
1		TANK FS	4.0/4.0/4.0	60	51	WALL UTILITY CABINET LEFT	N/A
2		TANK FS	4.0/4.0/4.0	80	64	WALL UTILITY CABINET LEFT	N/A

GAS VALVE(S)

FIRE SYSTEM NO	TAG	TYPE	SIZE	SUPPLIED BY
1		SC ELECTRICAL	2.000	CAPTIVEAIRE SYSTEMS
2		SC ELECTRICAL	2.000	CAPTIVEAIRE SYSTEMS

TANK MANUAL ACTIVATION DEVICE DETAIL



- NOTES**
- FIELD PIPE DROPS AS SHOWN
 - PIPING, ELBOWS, TEES, AND NOZZLES SUPPLIED BY GAS.
 - FIELD INSTALLED DROP: FACTORY WILL PROVIDE QTY 2 60IN LONG PIECES OF CHROME PLATED PIPING SHIPPED LOOSE TO BE FIELD-INSTALLED.
 - SHIP LOOSE DROP: FACTORY WILL PROVIDE THE EXACT CHROME PIPE LENGTH NEEDED SHIPPED LOOSE TO BE FIELD-INSTALLED.
 - RELOCATE NOZZLES IF FLOW PATTERN IS BLOCKED BY SHELVING, SALAMANDERS, ETC.
 - OVERLAPPING COVERAGE SHALL NOT BE USED ON ANY APPLIANCE WITH AN OBSTRUCTION.
 - IF APPLICABLE, EXTENDED PRE-PIPED DROPS ARE SHIPPED LOOSE.
 - FACTORY PIPING EXTENDS A MAXIMUM OF 6' ABOVE THE TOP OF THE HOOD.

- APPLIANCE DIMENSIONS LISTED REPRESENT THE COOKING SURFACE SIZE, NOT THE OVERALL APPLIANCE SIZE.
- THIS PRE-ENGINEERED FIRE SYSTEM COMPLIES WITH UL 300 REQUIREMENTS.

- DL-F NOZZLE PART NUMBER REPLACES 3070-3/8H-10-SS
 JOB #: 7545348
 JOB NAME: FOGO DE CHAD PRINCETON NJ.

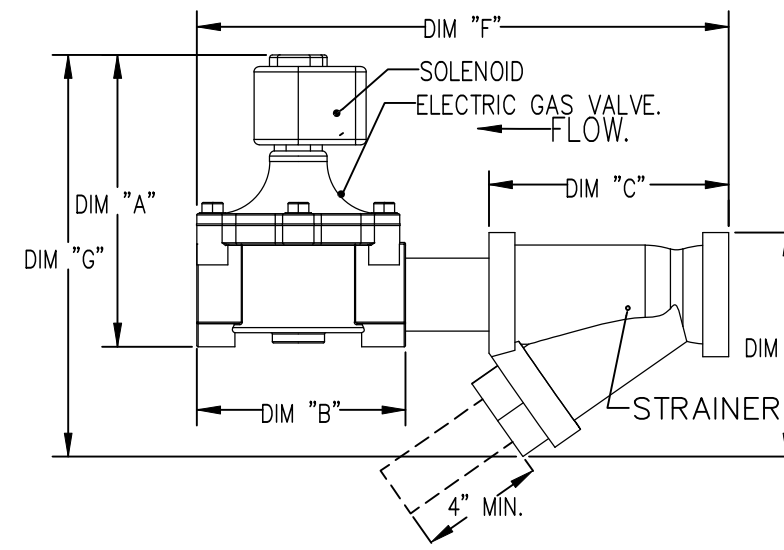
SYSTEM SIZE: TANK-SP-4-WC DESIGN FP: 64. MAXIMUM FP: 80.
 HOOD # 3 15' 10.00" LONG x 60" WIDE x 30" HIGH.
 RISER # 1 SIZE: 16" DIA.
 RISER # 2 SIZE: 16" DIA.
 HOOD # 3 METAL BLOW-OFF CAPS INCLUDED.

- HEAVY-DUTY APPLIANCES (RATED 600°F) WILL REQUIRE AN ADDITIONAL DOWNSTREAM FIRESTAT IN THE EVENT THAT THE DUCTWORK CONTAINS ANY HORIZONTAL RUNS OVER 25 FT IN LENGTH.
- MEDIUM TO LIGHT-DUTY APPLIANCES (RATED 450°F) WILL NOT REQUIRE ANY ADDITIONAL DOWNSTREAM DETECTION.

AGENT DISTRIBUTION PIPING LIMITATIONS	
PIPE SECTION	MAX PIPE LENGTH (FT)
MAX SUPPLY LINE TO FIRST OVERLAPPING NOZZLE	42
OVERLAPPING NOZZLE APPLIANCE BRANCH	10
DEDICATED NOZZLE APPLIANCE BRANCH	10

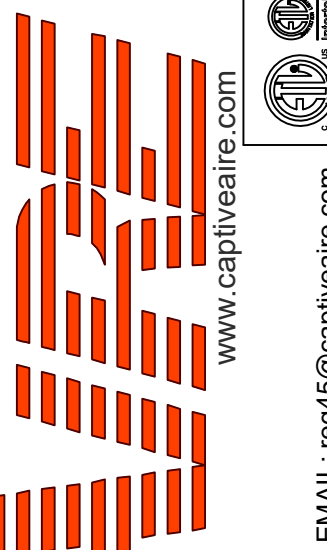
GAS VALVES AND STRAINERS																
TYPE	SIZE	VOLTAGE	GAS VALVE SIZING			GAS VALVE DIMENSIONS					PART NUMBERS					
			MIN INLET PRESSURE	MAX INLET PRESSURE	FLOW AT 1 IN.W.C. (0 IN.W.C.)	MIN "A"	MIN "B"	MIN "C"	MIN "D"	MIN "E"	PIPE ORIENTATION	GAS VALVE PART NUMBER	STRAINER PART NUMBER	GAS VALVE/STRAINER KIT		
ELECTRICAL	2"	120 VAC	5 PSIG (0 IN.W.C.)	136 IN.W.C.	2,940,500 BTU/HR	1,908,048 BTU/HR	7-5/8"	6-3/8"	7-1/4"	7-13-16"	15-5/8"	13-15/16"	HORIZONTAL/VERTICAL	8214280	4417688	(SCG)VA2

ALL GAS VALVES/STRAINERS
 PROPER CLEARANCE MUST BE PROVIDED IN ORDER TO SERVICE THE STRAINERS. A MINIMUM OF 4" CLEARANCE DISTANCE MUST BE PROVIDED AT THE BASE OF THE STRAINER. CUSTOMER MUST VERIFY SITE CONSUMPTION AS WELL AS PRESSURE RATING. SPECIFIC GRAVITY OF NATURAL GAS = 0.64, SPECIFIC GRAVITY OF LP = 1.52.



REVISIONS

DESCRIPTION	DATE



Fogo de Chao Princeton NJ
 Gilbert, AZ, 08540

DATE: 6/13/2025

DWG.#: 7545348

DRAWN BY: DJL-45

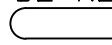
SCALE: 1/2" = 1'-0"

MASTER DRAWING

SHEET NO.

FAN #8 CAS-HVAC3-I.500-24MF-30T-DOAS - HEATER (DOAS-1 GRILL)

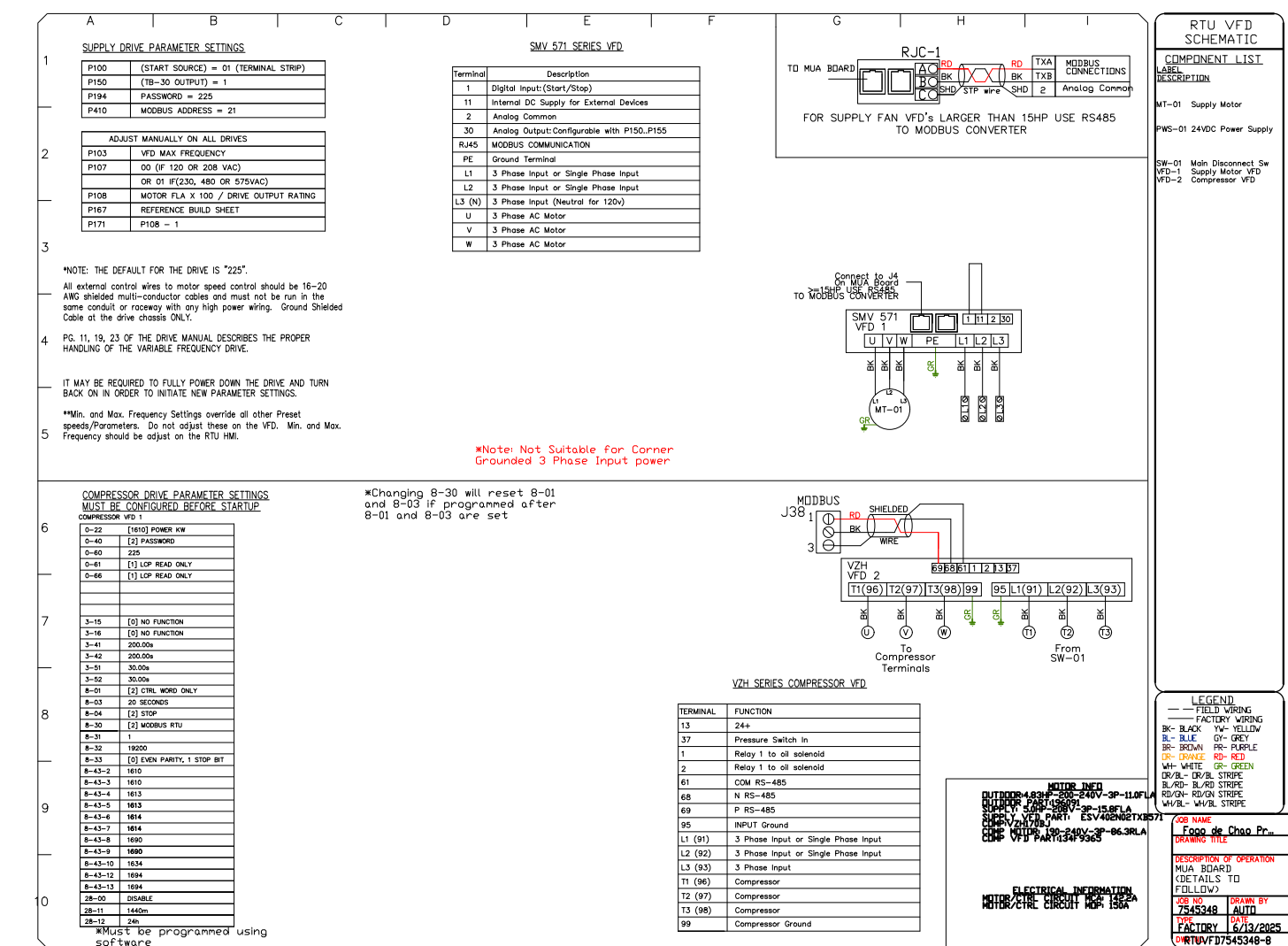
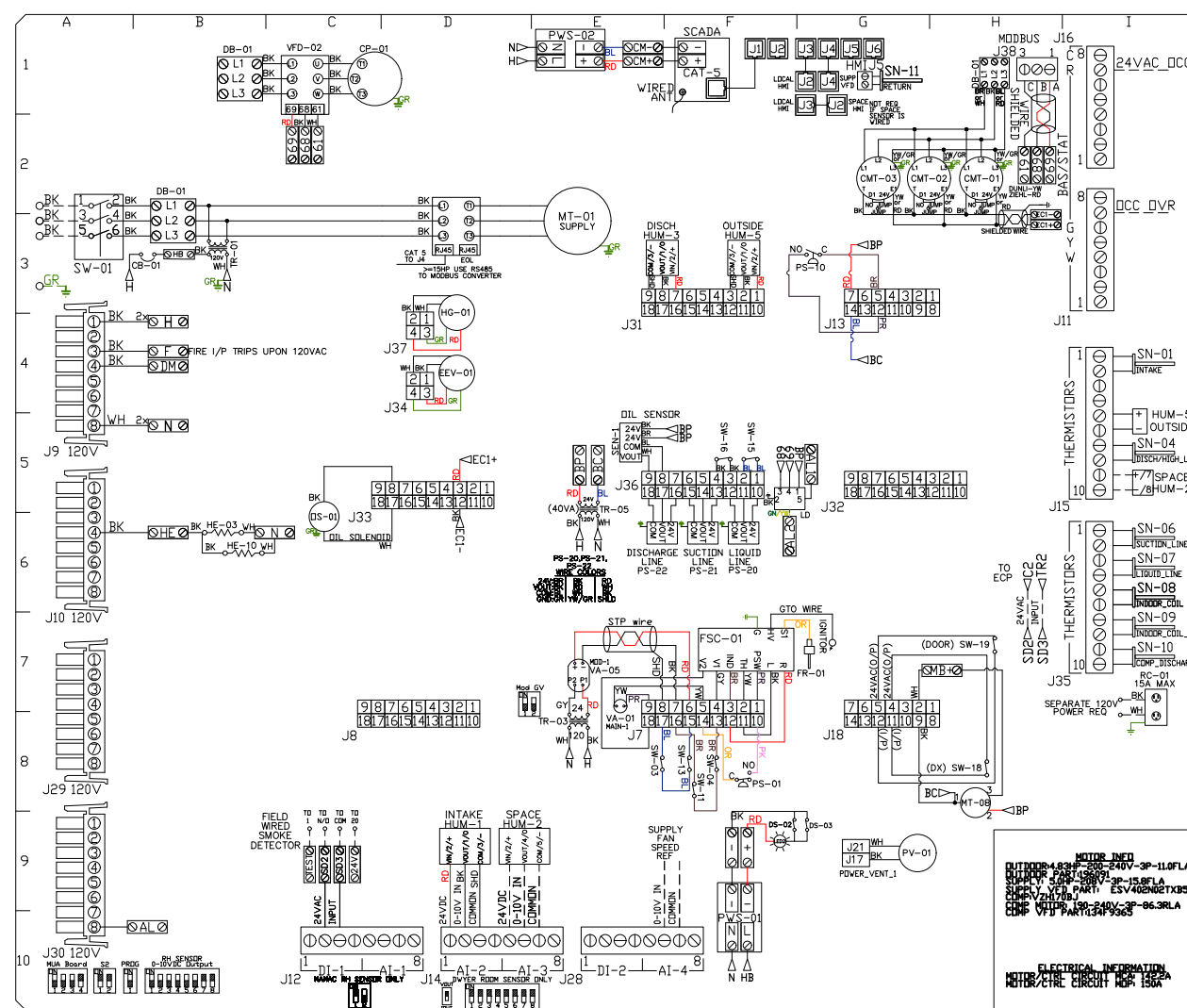
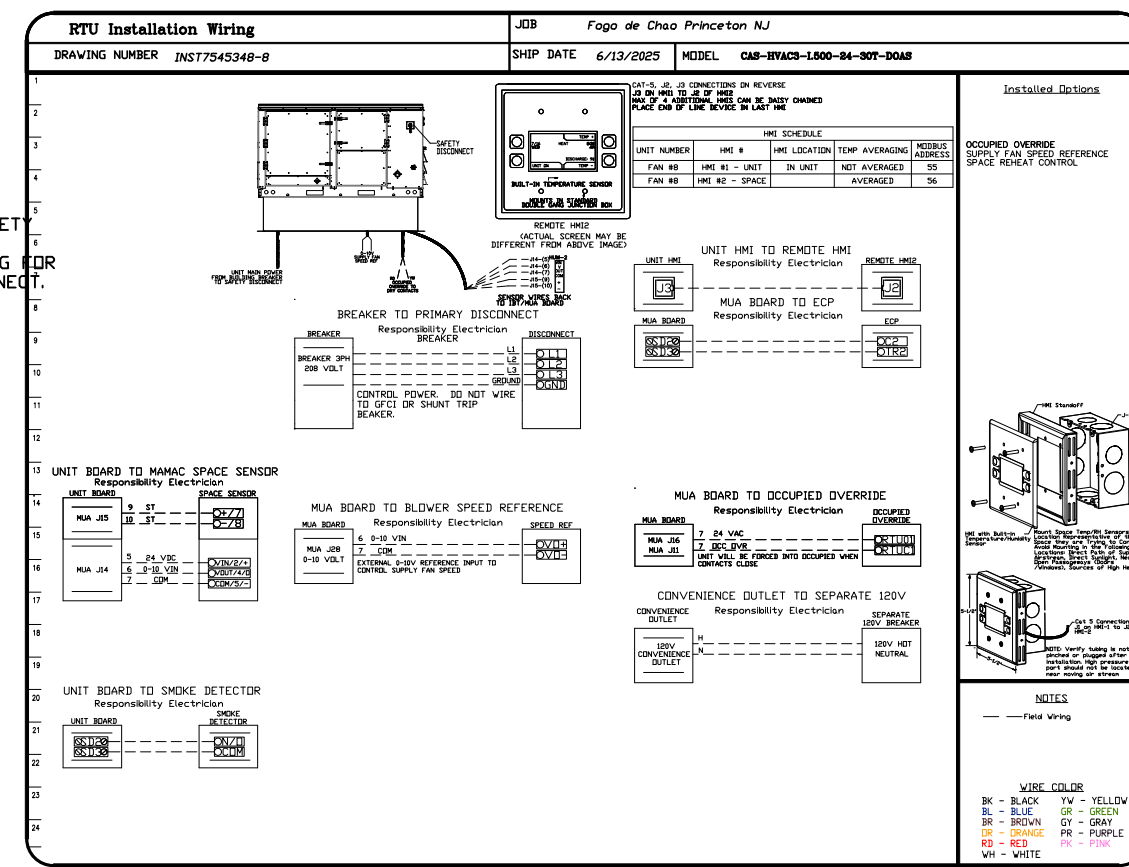
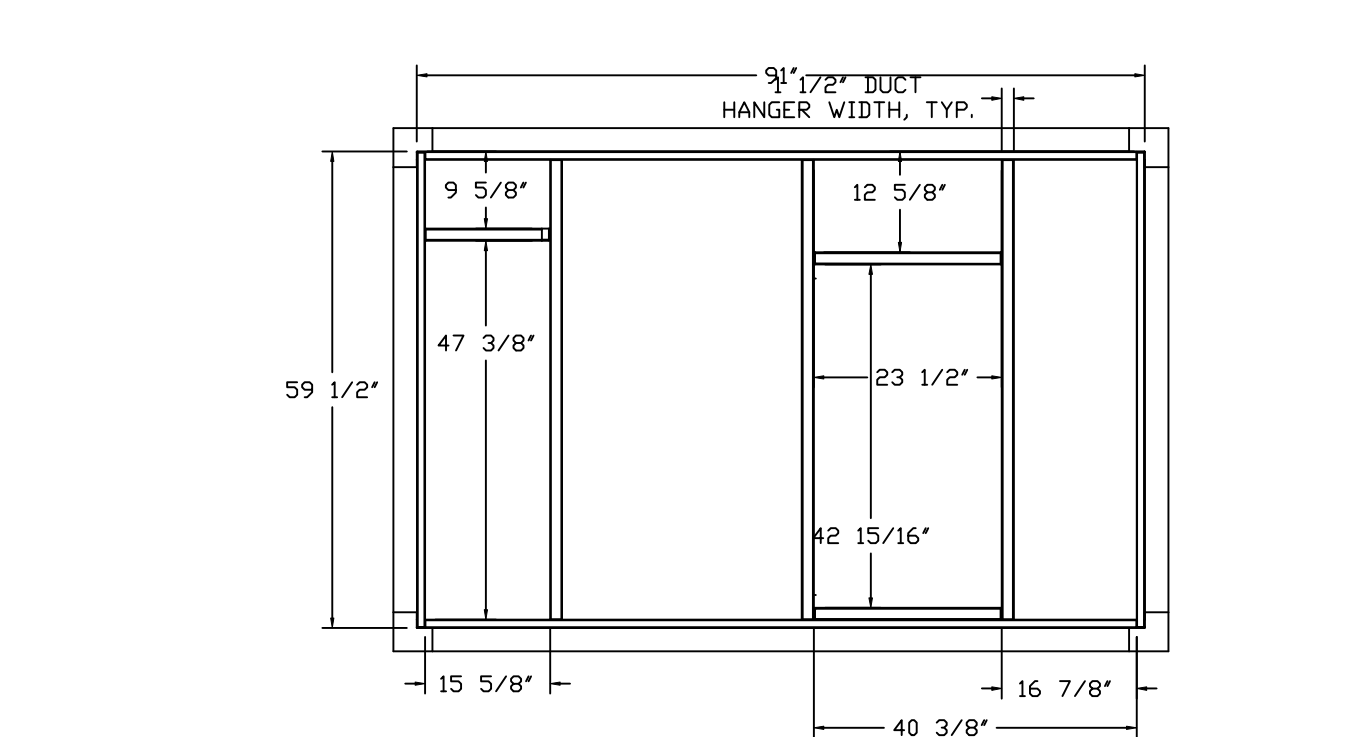
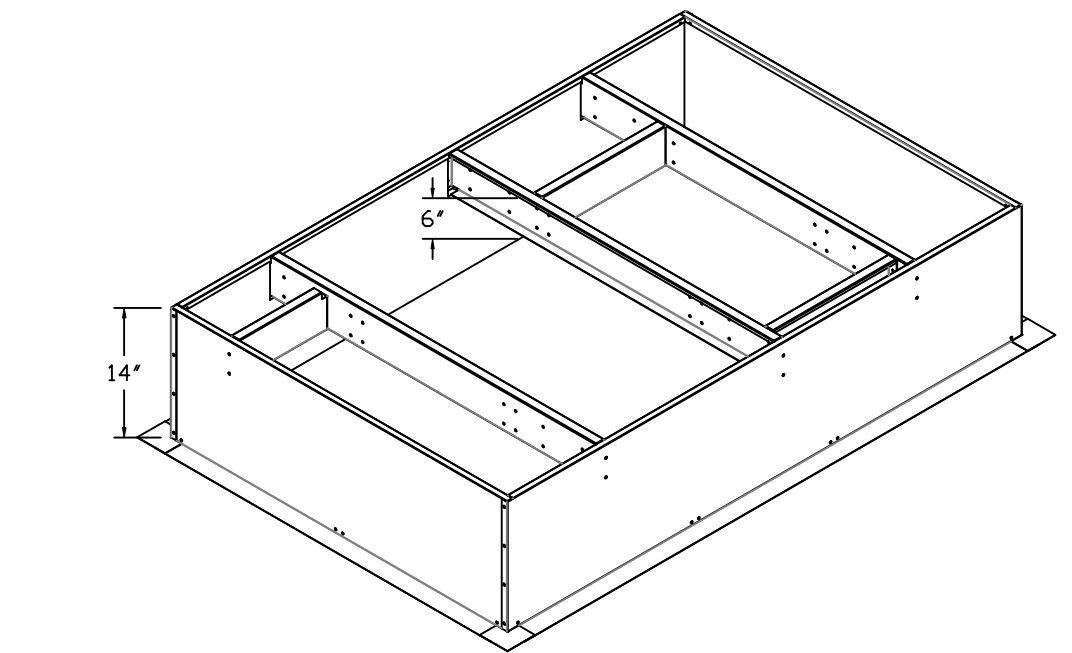
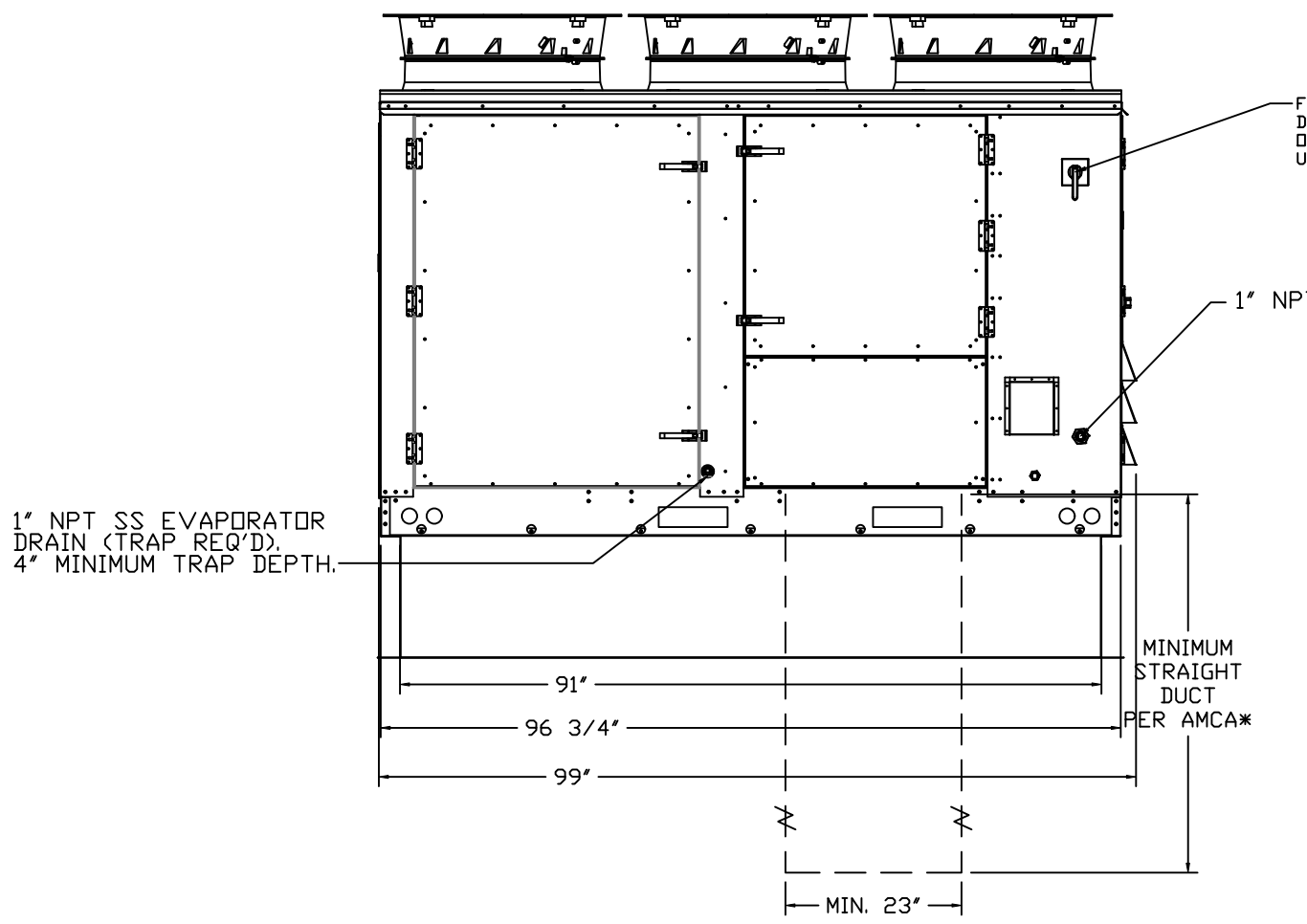
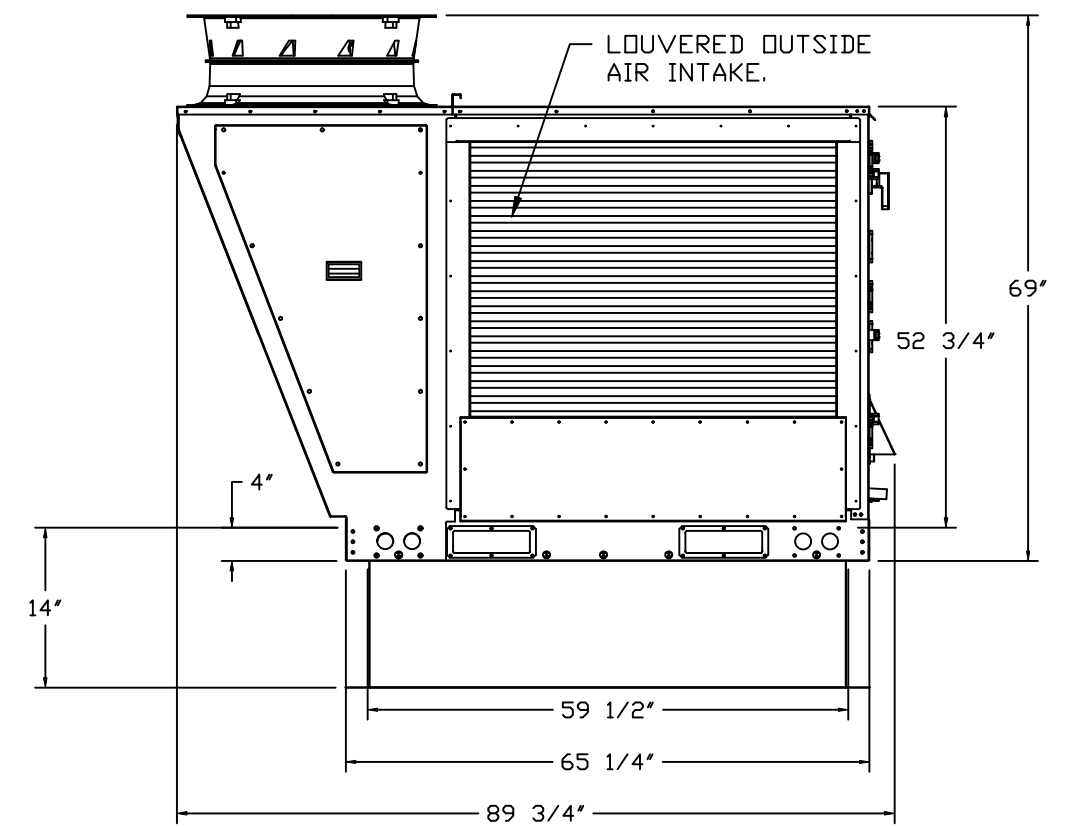
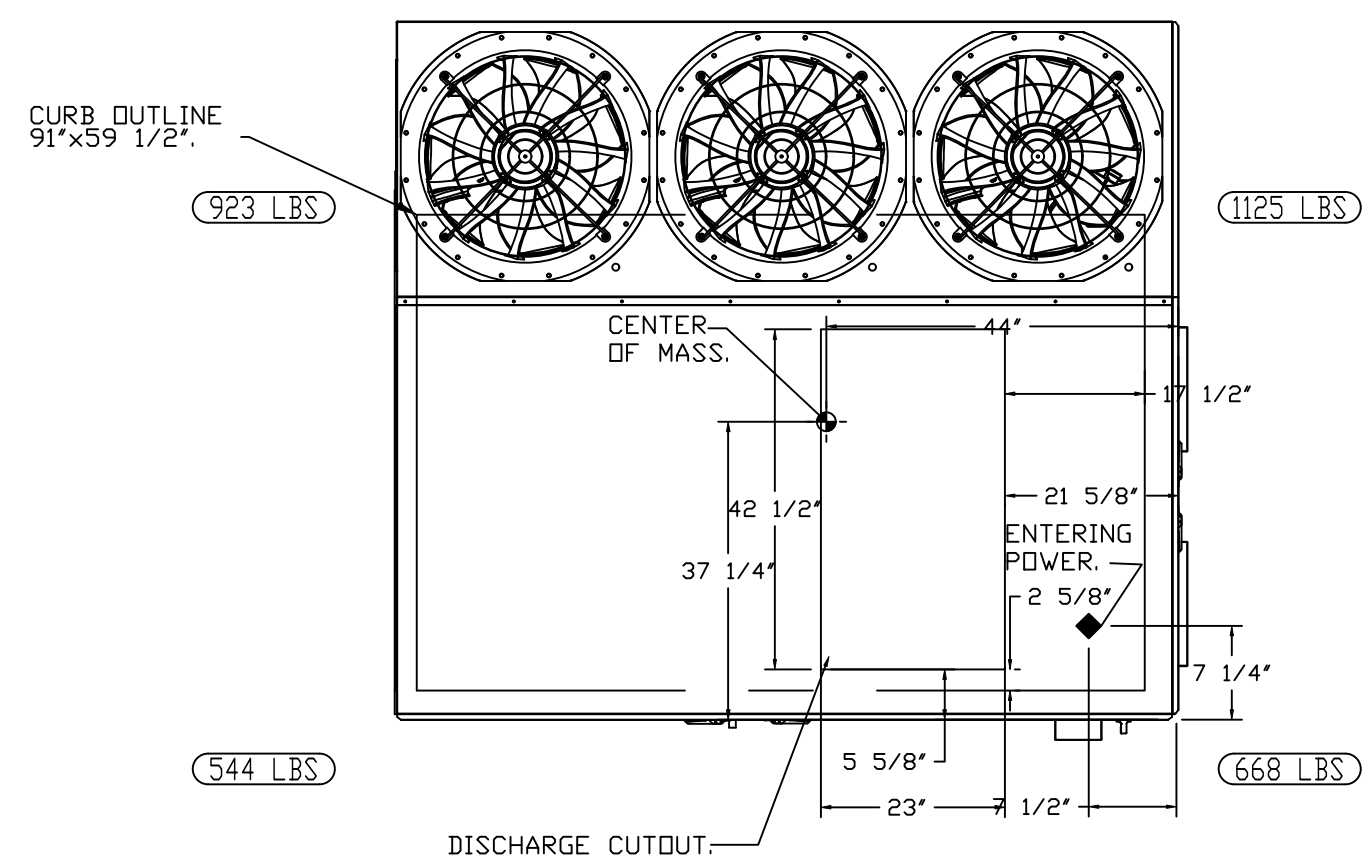
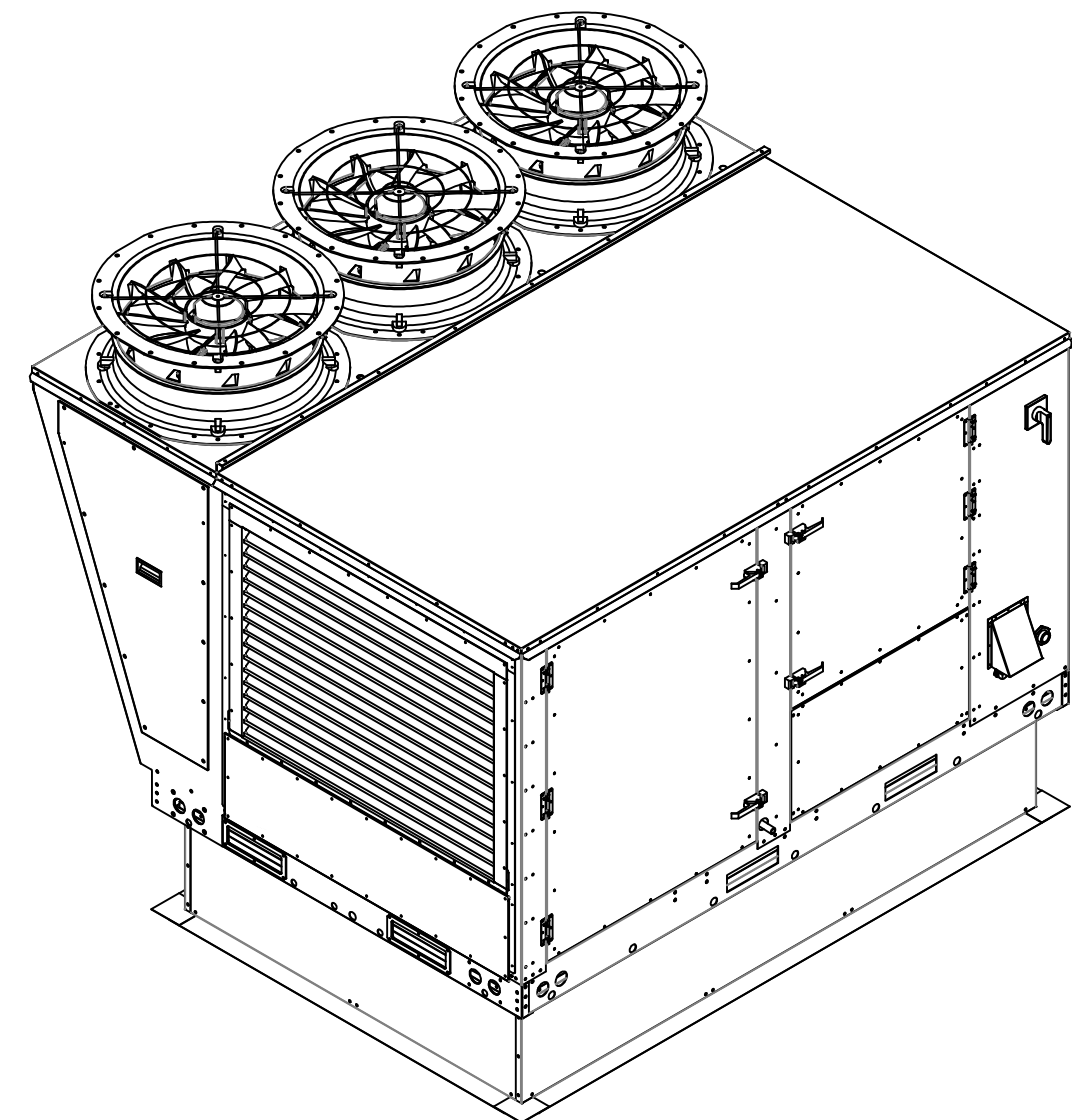
NOTES:

- DO NOT OBSTRUCT OUTSIDE AIR INLET, OUTSIDE AIR COIL OR OUTSIDE AIR FAN.
-  DENOTES CORNER WEIGHT.
- ROOF OPENING MUST BE 2" SMALLER THAN CURB DIMENSIONS IN BOTH DIRECTIONS.
- CONNECTION FROM BREAKER TO UNITS SAFETY DISCONNECT SWITCH TO BE COPPER WIRE ONLY.
- EXTERIOR GAS CONNECTION PROVIDED BY FACTORY WITH QUICK SEAL AND ANTI-ROTATION BRACKET.

*NOTE: INTEGRAL CO2 MONITORING AND CONTROL CAPABILITIES FOR ALL SPACE MOUNTED THERMOSTATS.

*NOTE: THIS UNIT IS INTENDED TO SERVE IN PLACE OF THE KITCHEN HVAC ROOF TOP UNIT (RTU) IN ADDITION TO PROVIDING APPROPRIATE MAKE-UP AIR FOR THE KITCHEN HOOD(S). RTU AND ASSOCIATED DUCTWORK SHALL BE REMOVED FROM SCOPE UNLESS REQUIRED FOR INTERNAL LOAD ESTIMATES. FINAL DESIGN SHALL BE REVIEWED AND APPROVED BY THE ENGINEER OF RECORD.

*NOTE: SUPPLY DUCT MUST BE INSTALLED TO MEET SMACNA STANDARDS. A MINIMUM STRAIGHT DUCT LENGTH MUST BE MAINTAINED DOWNSTREAM OF UNIT DISCHARGE AS OUTLINED IN AMCA PUBLICATION 201. WHEN USING RECTANGULAR DUCTWORK, ELBOWS MUST BE RADIUS THROAT, RADIUS BACK WITH TURNING VANES. FLEXIBLE DUCTWORK AND SQUARE THROAT/SQUARE BACK ELBOWS SHOULD NOT BE USED. ANY TRANSITION AND/OR TURNS IN THE DUCTWORK WILL CAUSE SYSTEM EFFECT. SYSTEM EFFECT WILL DRASTICALLY INCREASE STATIC PRESSURE AND REDUCE AIRFLOW. DO NOT RELY ON UNIT TO SUPPORT DUCT IN ANY WAY. FAILURE TO PROPERLY SIZE DUCTWORK MAY CAUSE SYSTEM EFFECTS AND REDUCE PERFORMANCE OF THE EQUIPMENT.
SUGGESTED STRAIGHT DUCT SIZE IS 23" x 39".



REVISIONS

DESCRIPTION	DATE

CAPTIVE

Dallas Office

1901 Royal Lane Suite 101, DALLAS, TX, 75229 PHONE: (214) 220 - 3999 FAX: 2142200099 EMAIL: reg45@captivair.com

Fogo de Chao Princeton NJ
Gilbert, AZ, 08540

DATE: 6/13/2025

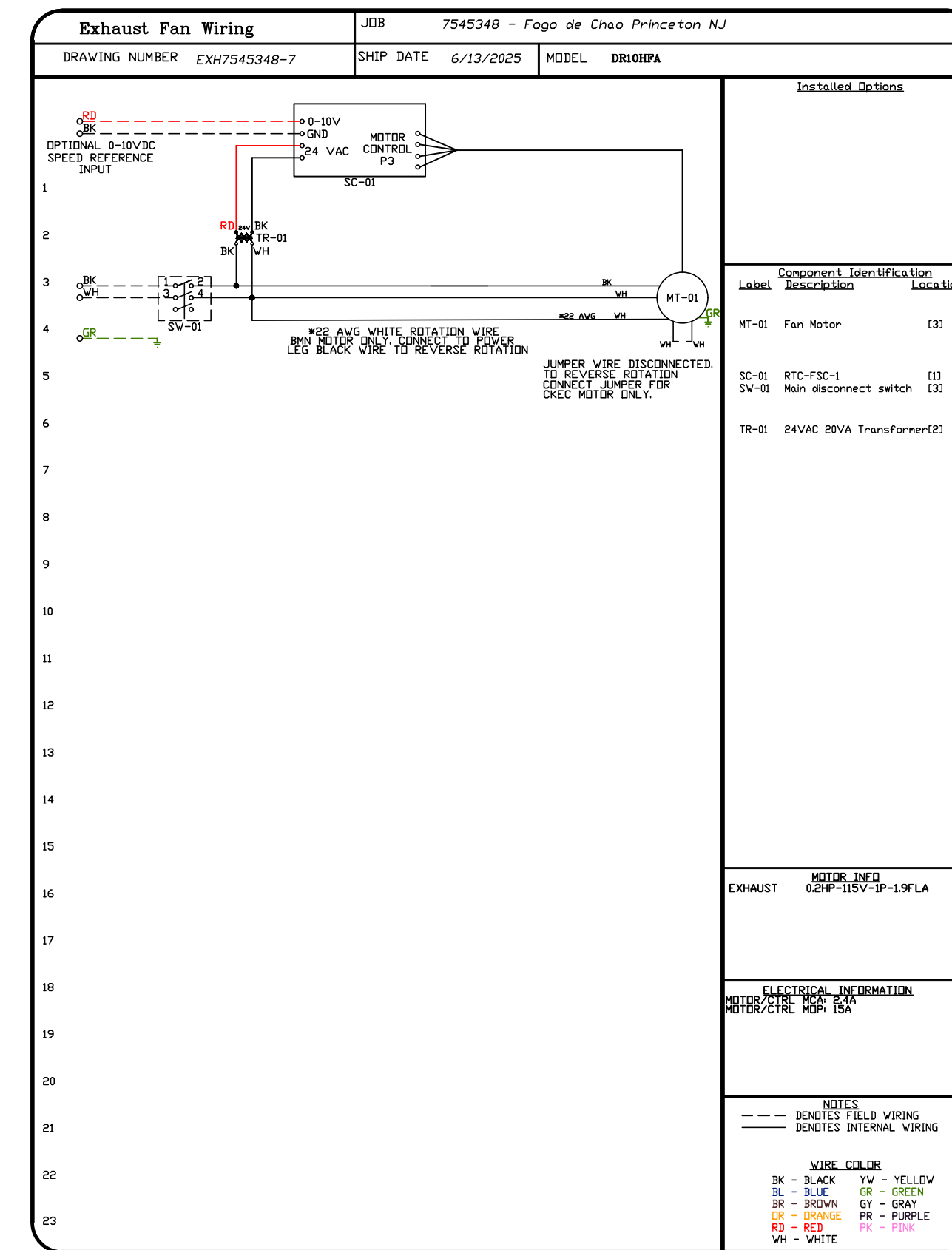
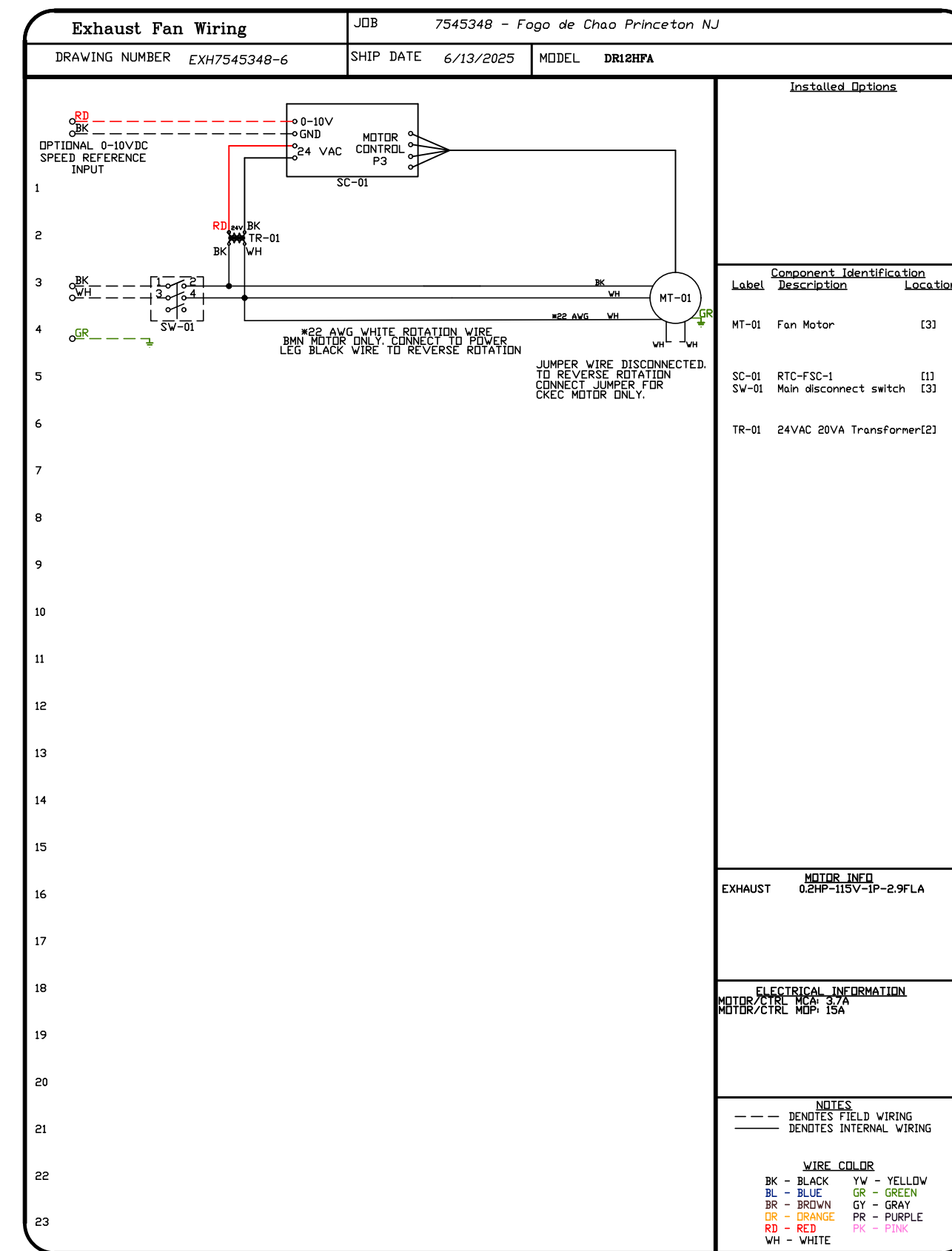
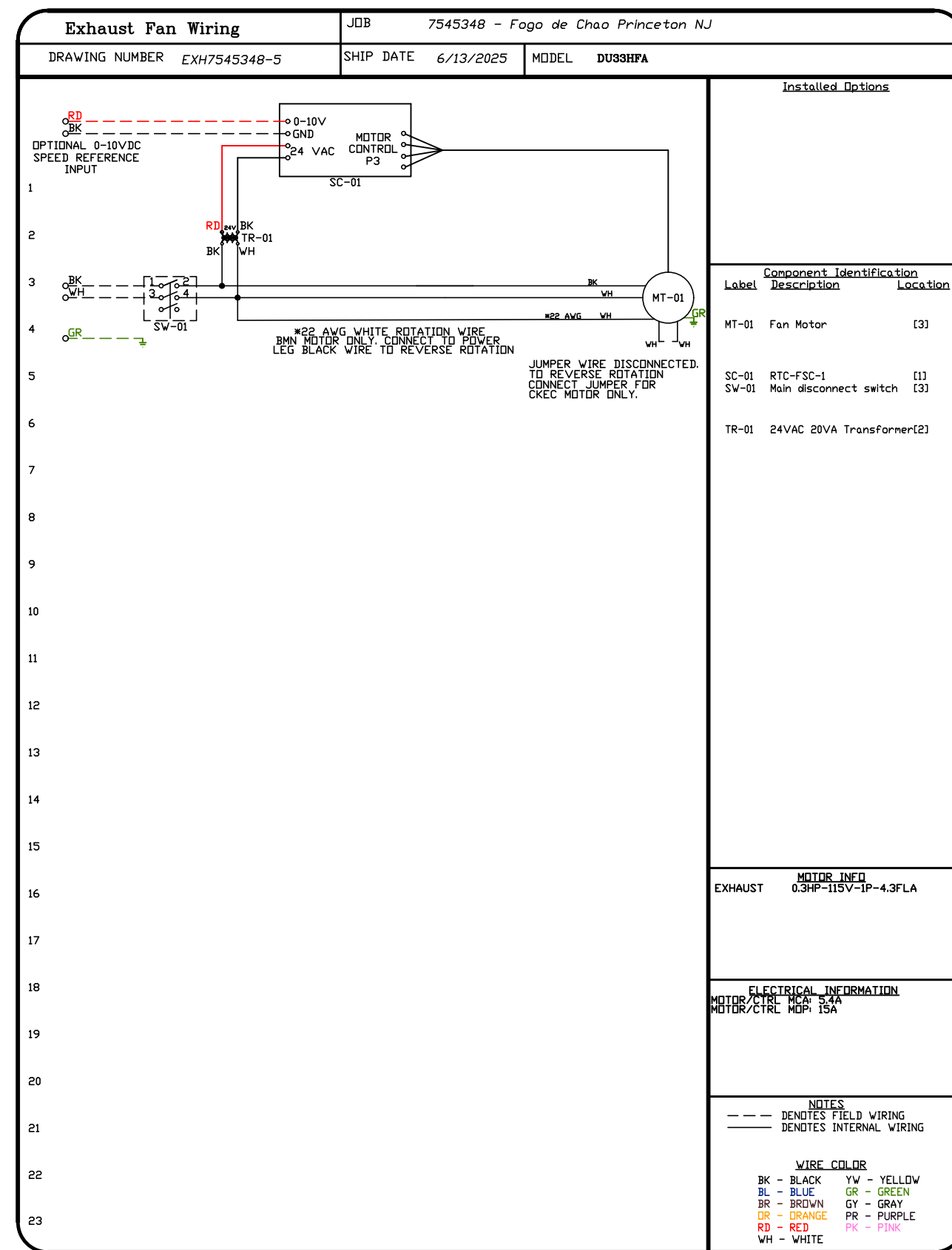
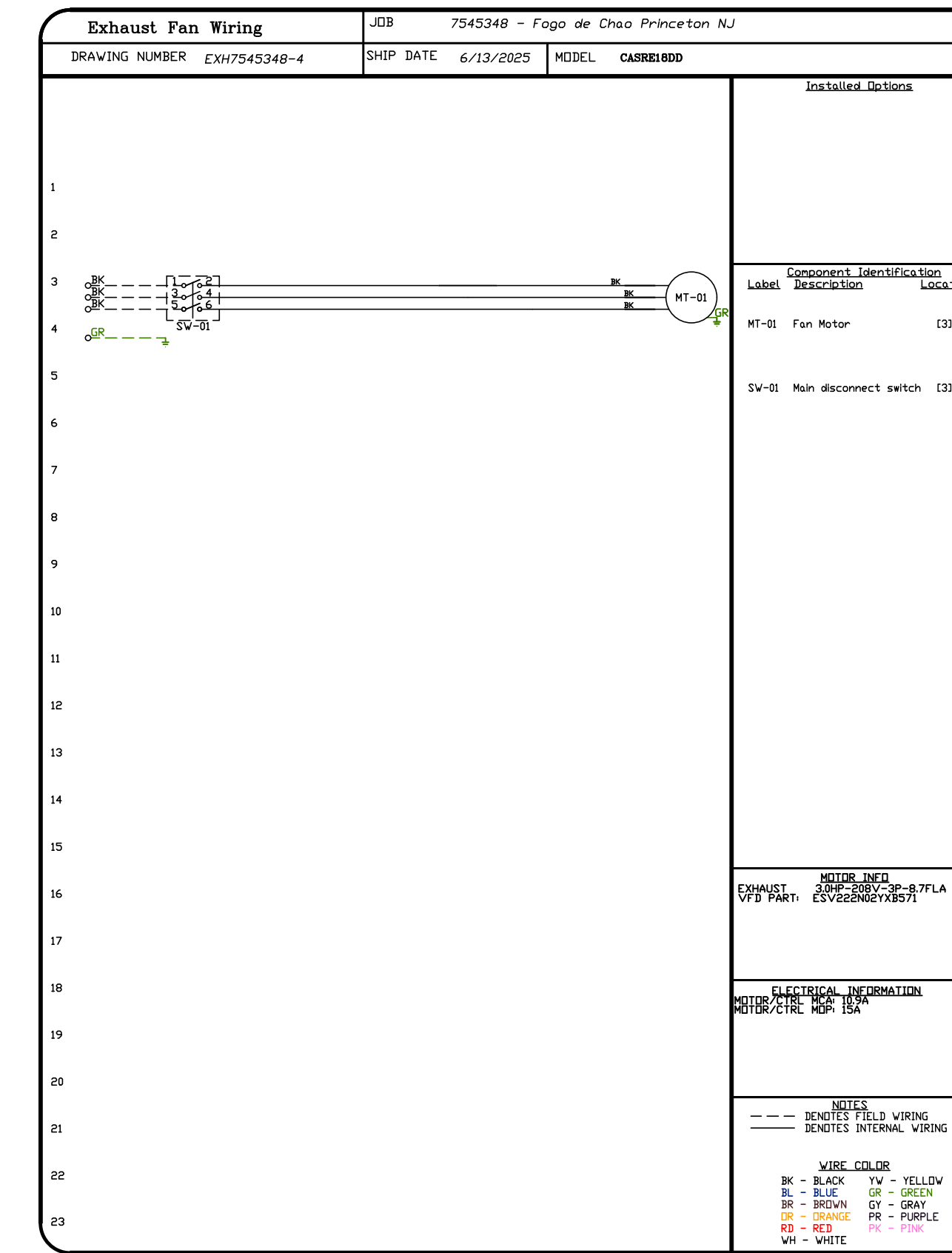
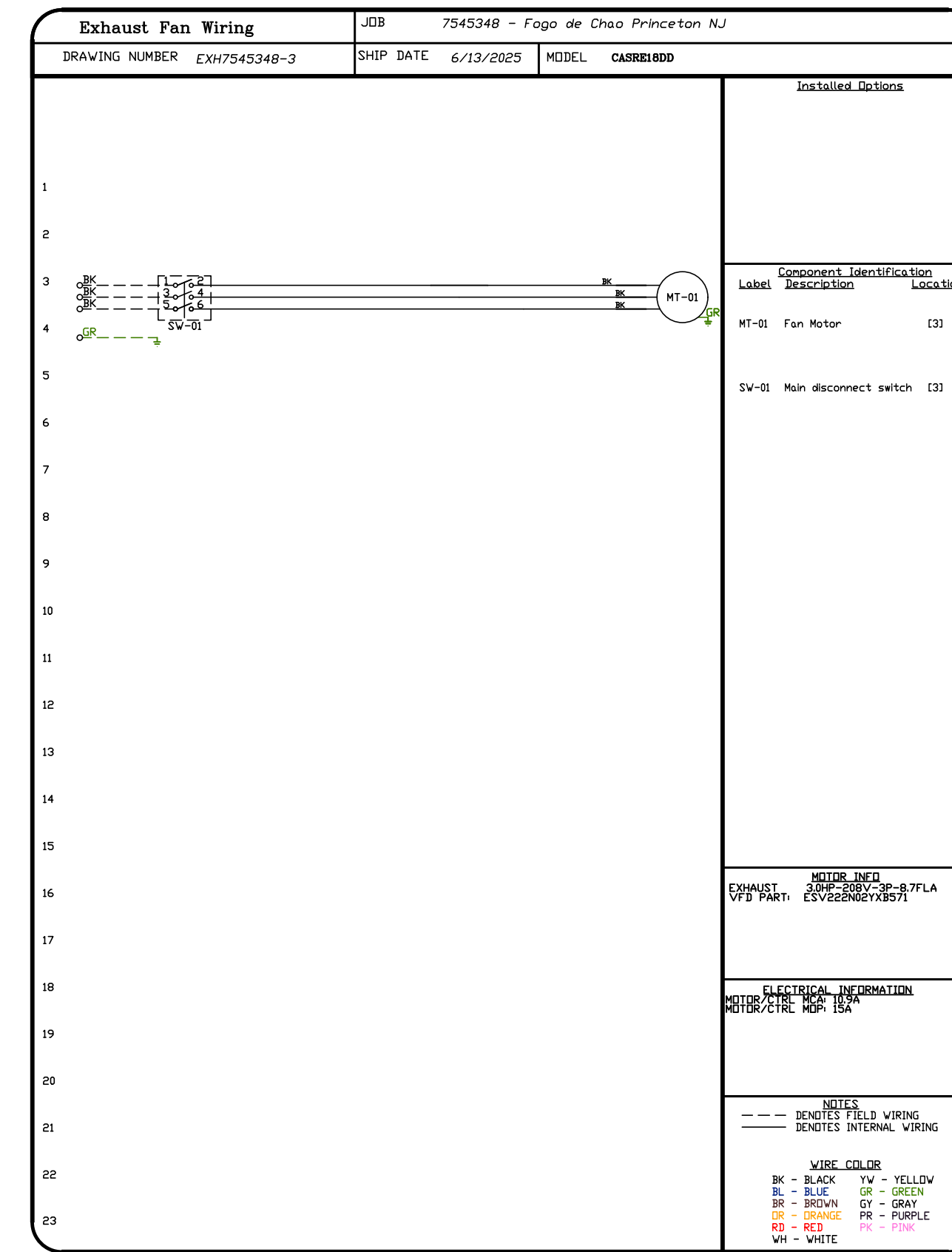
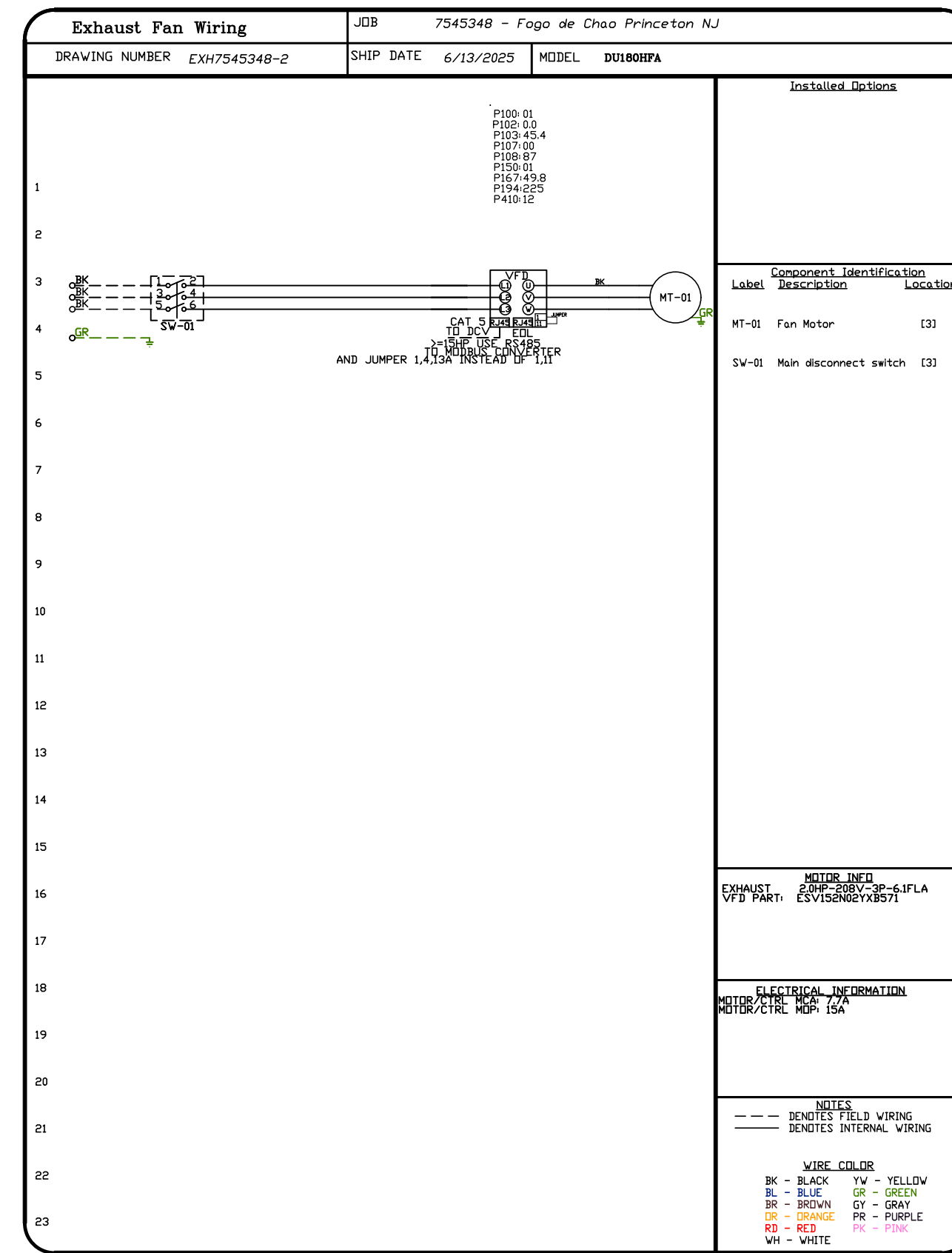
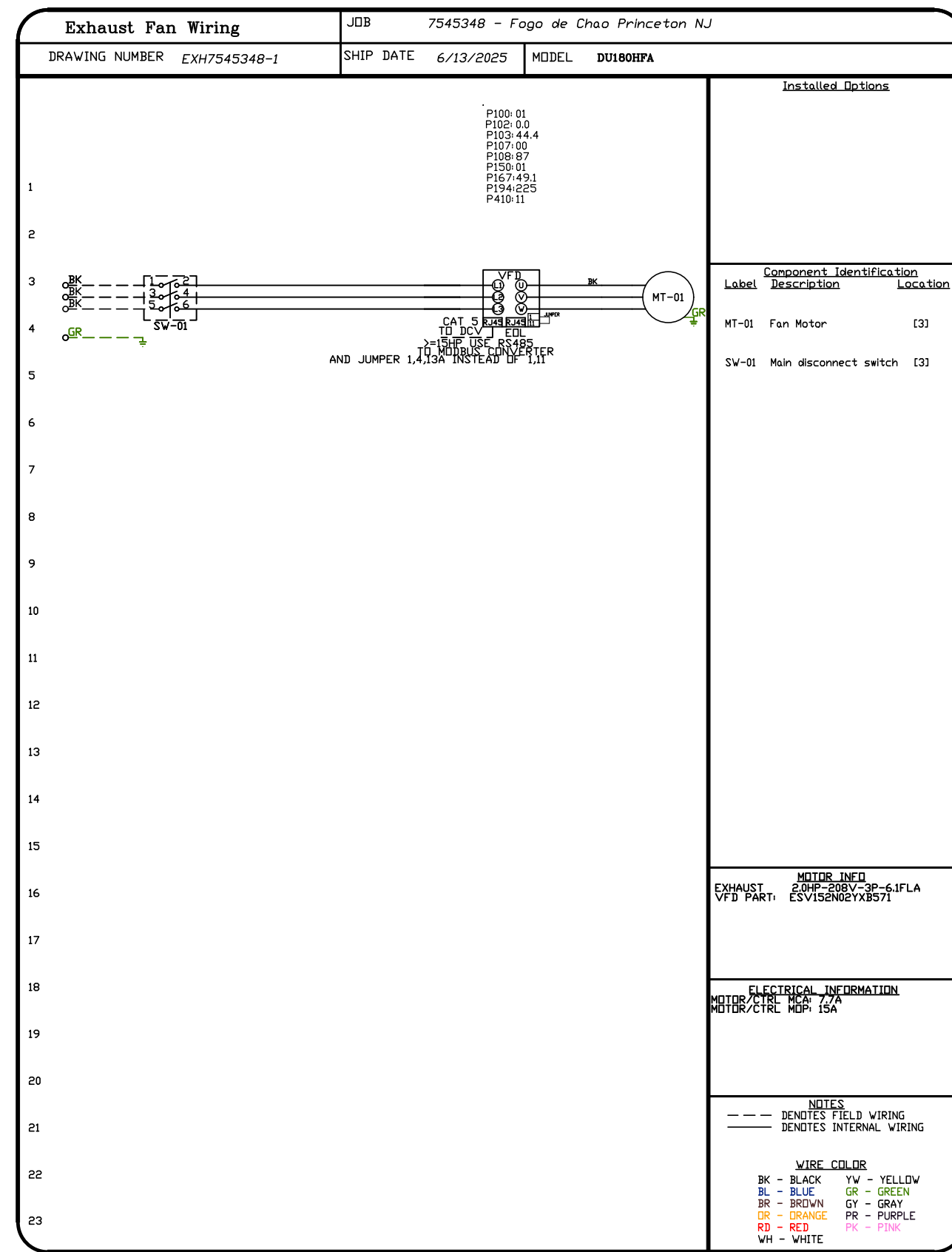
DWG.#:
7545348

DRAWN BY: DJL-45

SCALE:
1/2" = 1'-0"

MASTER DRAWING

SHEET NO.
5



REVISIONS	
DESCRIPTION	DATE

Dallas Office

1901 Royal Lane Suite 101, DALLAS, TX 75229 PHONE: (214) 220 - 3999 FAX: 2142200099 EMAIL: req45@captivewire.com

Fogo de Chao Princeton NJ
Gilbert, AZ, 08540

DATE: 6/13/2025

DWG.#:
7545348

DRAWN BY: DJL-45

SCALE:
3/4" = 1'-0"

MASTER DRAWING

SHEET NO.

6

