

Report By:

National TAB
1329 E. KEMPER ROAD
SUITE 4210
CINCINNATI, OH 45246



Report: TAB Report
Function: Test, Adjust, & Balance
Date: 03/03/2025
Completed By: National TAB

PROJECT

02-24-25 SEPHORA 730 NORTHRIDGE, LA

9301 Tampa Avenue

Northridge , CA 91324

Client

Brinco Mechanical Management Services, Inc.
125 South Main St
Freeport, NY 11520

National TAB

Project: 02-24-25 SEPHORA 730 NORTHRIGDE, LA

Table Of Contents

Section	Page #
Summary	3
Checklist Data	4
AHU/RTU	9

Project Summary

The summary below provides a quick understanding of our scope of work and general testing procedures. Enclosed in the report is further detail about your building performance including recommendations, asset data, and pictures. Our focus is to work with the trades to remedy any issues or deficiencies during the actual field balancing and not after the balancing has occurred to achieve a positive environment and outcome. The level of success is determined by the availability of the trades, possible parts needed, or time constraints.

RTU's (Roof Top Units)

Each of the RTU's were measured at their terminal devices or via traverse to establish a total flow for that unit. Each RTU was adjusted to within tolerance of the engineer's design flow. Outside air was measured by reading the intake air opening with a velocity grid and multiplying by the free area. The outside air damper was adjusted until the airflow was within the design requirements. Any equipment that fell outside of that tolerance is noted throughout the report.

CheckList List

- RTU CHECKLIST



02-24-25 SEPHORA 730 NORTHRIGDE, LA

CheckList Information

Name : RTU CHECKLIST **Status :** Completed

Assigned Organization : National TAB **Asset :**

Requesting Organization : National TAB

Created Date : 02/20/2025 - Nicole Seever - National TAB

Completed Date : 02/27/2025 - David Nicolas Sanchez - National TAB

CheckList Item Details

RTU's/AHU's

Economizers are assembled and functional?

Comment:

Yes

Motors are all operating below the FLA rating?

Comment:

Yes

Are belts tight?

Comment:

N/A

If direct drive unit is the speed controller working.

Comment:

Yes

Is gas piping installed and valves turned on?

Comment:

Yes

Unit free of noticeable noise and vibration

Comment:

Yes

Units are labeled and installed on proper curb

Comment:

Yes

Unit ductwork properly installed / sealed on curb

Comment:

Yes

Pulleys are properly aligned

Comment:

N/A

Condensate lines and P-Traps installed correctly

Comment:

Yes

Disconnect Switch Installed

Comment:

Yes

Outside air dampers/Economizers installed and functioning

Comment:

Yes

Additional Comments or recommendations:

Comment:

None

Documentation

If issues, have NTAB team and Brinco Management been notified ?

Comment:

Yes

If any issues, have Facilibuild issues been created explaining in detail?

Comment:

Yes

Pictures

All Issues

Comment:

N/A

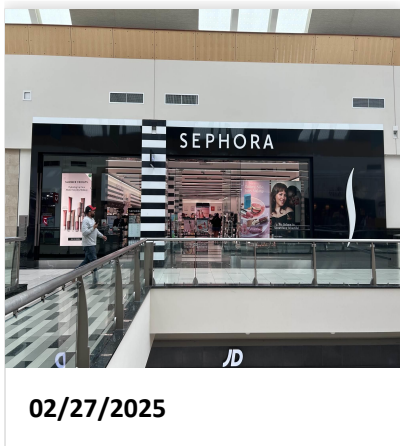
Each Piece of equipment

Comment:

Yes

Front of store

Comment:



Roof Top Layout

Comment:



02/27/2025

National TAB

Project: 02-24-25 SEPHORA 730 NORTHRIGDE, LA

System/Unit: AHU/RTU



Asset: RTU1

AREA:

Unit Data		
	Design	Actual
MFG	CARRIER	CARRIER
Serial Num	-	4623P04385
Model Num	50FCQM12A2A5-0A4C0	50FCQM14A2A5
Type	RTU	RTU
Configuration	VERTICAL	VERTICAL
Num OA Filters 1	-	1
OA Filter Size 1	-	37.5X18X2
Num Final Filter 1	-	6
Final Filter Size 1	-	24X17X2

Motor Data		
	Design	Actual
Motor MFG	-	NL
Frame	-	NL
Horsepower	-	NL
Motor Rpm	-	NL
Phase	3	3
Rated Voltage	208	208
Rated Amperage	60	7.5

Drive Data	
	Actual
Motor Sheave Size	DD
Motor Bore Size	DD
Motor Sheave SetPt	DD
Fan Sheave Size	DD
Fan Sheave Bore	DD
Belt CL Distance	DD
Num of Belts	DD
Belt Size	DD
Belt Alignment	DD

Test Data		
	Design	Actual
SF CFM	3500	3818
SF RPM	-	924
RA CFM	2975	3286
OA CFM	525	532
RL Voltage	-	209/209/210
RL Amperage	-	1.32/1.47/1.47
SF Rotation	-	CCW
SF System SetPt	-	A
RA Damper Position	-	5.3V
Min OA Damper Position	-	4.7V
Min OA Damper Type	-	ECONOMIZER
OA Enthalpy Setpt	-	N/A

Performance Data		
	Design	Actual
MA Plenum SP	-	-0.40"
Fan Suction SP	-	-0.51"
Fan Discharge SP	-	0.045"
Total ESP	1.21"	0.44"
Fan Total SP	-	0.55"

General	
	Actual
Fan Rotation Correct	YES
Unit Filters Clean	YES
Condensate Drain Installed	YES

Completed By: David Nicolas Sanchez on 02/26/2025

Unit Data - PHOTO LOG



02/27/2025

National TAB

Project: 02-24-25 SEPHORA 730 NORTHRIGDE, LA

System/Unit: AHU/RTU



Asset: RTU2

AREA:

Unit Data		
	Design	Actual
MFG	CARRIER	CARRIER
Serial Num	-	4623P04391
Model Num	50FCQM12A2A5-0A4C0	50FCQM14A2A5
Type	RTU	RTU
Configuration	VERTICAL	VERTICAL
Num OA Filters 1	-	1
OA Filter Size 1	-	37.5X18X2
Num Final Filter 1	-	6
Final Filter Size 1	-	24X17X2

Motor Data		
	Design	Actual
Motor MFG	-	NL
Frame	-	NL
Horsepower	-	NL
Motor Rpm	-	NL
Phase	3	3
Rated Voltage	208	208
Rated Amperage	60	7.5

Drive Data	
	Actual
Motor Sheave Size	DD
Motor Bore Size	DD
Motor Sheave SetPt	DD
Fan Sheave Size	DD
Fan Sheave Bore	DD
Belt CL Distance	DD
Num of Belts	DD
Belt Size	DD
Belt Alignment	DD

Test Data		
	Design	Actual
SF CFM	3500	3540
SF RPM	-	921
RA CFM	2975	2988
OA CFM	525	552
RL Voltage	-	209/209/209
RL Amperage	-	1.43/1.37/1.25
SF Rotation	-	CCW
SF System SetPt	-	A
RA Damper Position	-	6.1V
Min OA Damper Position	-	3.9V
Min OA Damper Type	-	ECONOMIZER
OA Enthalpy Setpt	-	N/A

Performance Data		
	Design	Actual
MA Plenum SP	-	-0.44"
Fan Suction SP	-	-0.51"
Fan Discharge SP	-	0.045"
Total ESP	1.21"	0.48"
Fan Total SP	-	0.55"

General	
	Actual
Fan Rotation Correct	YES
Unit Filters Clean	YES
Condensate Drain Installed	YES

Completed By: David Nicolas Sanchez on 02/26/2025

Unit Data - PHOTO LOG



02/27/2025

National TAB

Project: 02-24-25 SEPHORA 730 NORTHRIGDE, LA

System/Unit: AHU/RTU



Asset: RTU3

AREA:

Unit Data		
	Design	Actual
MFG	CARRIER	CARRIER
Serial Num	-	0624C04842
Model Num	50FCQA05A1A5-0A4C0	50FCQA05A2A5
Type	RTU	RTU
Configuration	VERTICAL	VERTICAL
Num OA Filters 1	-	1
OA Filter Size 1	-	23.75X19.5X2
Num Final Filter 1	-	2
Final Filter Size 1	-	24.5X15.5X2

Motor Data		
	Design	Actual
Motor MFG	-	NL
Frame	-	NL
Horsepower	-	NL
Motor Rpm	-	NL
Phase	3	3
Rated Voltage	208	208
Rated Amperage	60	7.1

Drive Data	
	Actual
Motor Sheave Size	DD
Motor Bore Size	DD
Motor Sheave SetPt	DD
Fan Sheave Size	DD
Fan Sheave Bore	DD
Belt CL Distance	DD
Num of Belts	DD
Belt Size	DD
Belt Alignment	DD

Test Data		
	Design	Actual
SF CFM	1400	1334
SF RPM	-	1278
RA CFM	1190	1141
OA CFM	210	193
RL Voltage	-	210
RL Amperage	-	2.09
SF Rotation	-	CCW
SF System SetPt	-	A
RA Damper Position	-	7.0V
Min OA Damper Position	-	3.0V
Min OA Damper Type	-	ECONOMIZER
OA Enthalpy Setpt	-	N/A

Performance Data		
	Design	Actual
MA Plenum SP	-	-0.35"
Fan Suction SP	-	-0.45"
Fan Discharge SP	-	0.08"
Total ESP	0.86"	0.43"
Fan Total SP	-	0.53"

General	
	Actual
Fan Rotation Correct	YES
Unit Filters Clean	YES
Condensate Drain Installed	YES

Completed By: David Nicolas Sanchez on 02/27/2025

Unit Data - PHOTO LOG



02/27/2025