



## **SUBMITTAL**

### **Project**

Sephora Northridge - 2441018

### **Date**

Thursday, August 20, 2009

# Table Of Contents

Project: Sephora Northridge - 2441018  
Prepared By:

02/09/2024  
12:36PM

<b>RTU-1-2</b> .....	<b>3</b>
Unit Report.....	4
Certified Drawing.....	5
Performance Summary.....	8
Unit Feature Sheet.....	11
Spec Sheet.....	12
<b>RTU-3</b> .....	<b>13</b>
Unit Report.....	14
Certified Drawing.....	15
Performance Summary.....	18
Unit Feature Sheet.....	21
Spec Sheet.....	22

**RTU-1-2**

**Tag Cover Sheet  
Unit Report  
Certified Drawing  
Performance Report  
Unit Feature Sheet  
Spec Sheet**

## Unit Report For RTU-1-2

Project: Sephora Northridge - 2441018  
 Prepared By:

02/09/2024  
 12:36PM

### Unit Parameters

Unit Model:.....**50FCQM12A2A5-0A4C0**  
 Unit Size:.....**12 (10 Tons)**  
 Volts-Phase-Hertz:.....**208-3-60**  
 Heating Type:.....**Heat Pump**  
 Heat Control:.....**Two-Stage Cooling / One Circuit**  
 Duct Cfg:.....**Horizontal Supply / Horizontal Return**

### Dimensions (ft. in.) & Weight (lb.) \*\*\*

Unit Length:.....**7' 4.125"**  
 Unit Width:.....**4' 11.5"**  
 Unit Height:.....**4' 1.375"**

\*\*\* Weights and Dimensions are approximate. Weight does not include roof curbs, unit packaging, field installed accessories or factory installed options. Approximate dimensions are provided primarily for shipping purposes. For exact dimensions and weights, refer to appropriate product data catalog.

**Base Unit Weight (Does not include any accessories):**  
**955**.....lb

### Lines and Filters

Return Air Filter Type:.....**Throwaway**  
 Return Air Filter Quantity:.....**4**  
 Return Air Filter Size:.....**20 x 20 x 2**

**Selection includes construction throwaway filter into the base fan curve. This filter is not MERV Rated.**

### Unit Configuration

Standard/Medium Static (EcoBlue)  
 Al/Cu - Al/Cu  
 Base Electromechanical Controls  
 Hinged Panels and Unpowered Convenience Outlet  
 Non-Fused Disconnect  
 Standard Packaging

### Warranty Information

1-Year parts (STD.)  
 5-Year Compressor (std.)

No optional warranties were selected.

### Ordering Information

Part Number	Description	Quantity
50FCQM12A2A5-0A4C0	Rooftop Unit	2
<b>Field Installed Accessories</b>		
CRECOMZR085A00	Ultra-LOW LEAK - Horizontal EconoMi\$er X with solid-state W7220 controller	2
CRLVHLGD004A00	Louvered Condenser Coil Hail Guard	2
CRPWREXH028A01	Horizontal Power Exhaust	2
CRHNGPNL002A00	Hinged Access Door	2

# Certified Drawing for RTU-1-2

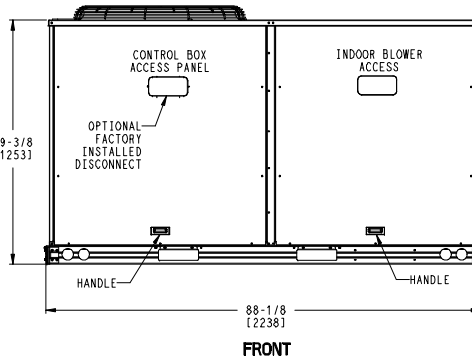
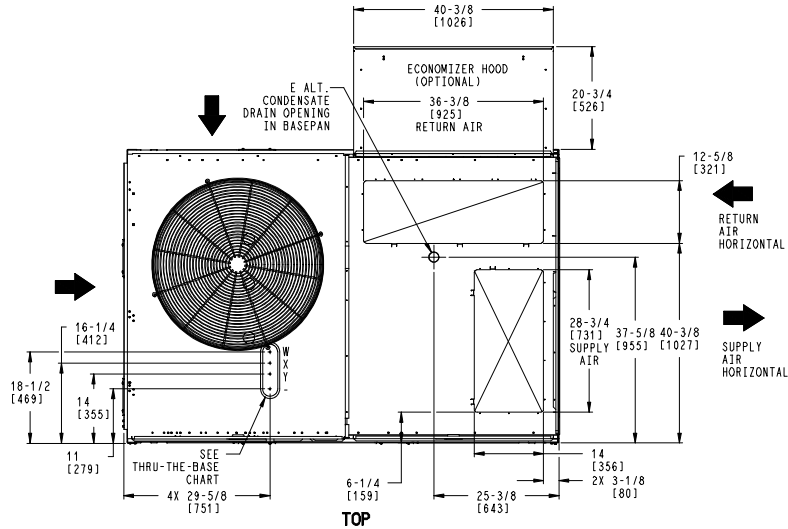
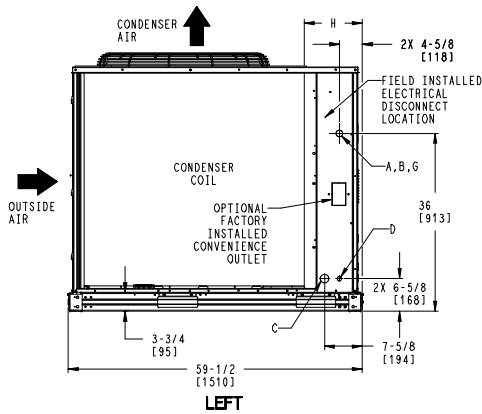
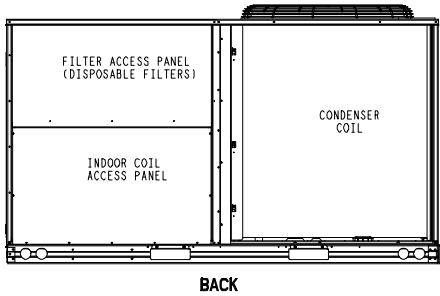
Project: Sephora Northridge - 2441018  
 Prepared By:

02/09/2024  
 12:36PM

**NOTES:**

1. DIMENSIONS ARE IN INCHES. DIMENSIONS IN [ ] ARE IN MILLIMETERS.
2. CENTER OF GRAVITY
3. DIRECTION OF AIR FLOW
4. ALL VIEW DRAWN USING 3RD ANGLE

UNIT	OUTDOOR COIL TYPE	H
50FCQ-12	RTPF	15 7/8 [403]
RTPF - ROUND TUBE, PLATE FIN (COPPER/ALUM)		



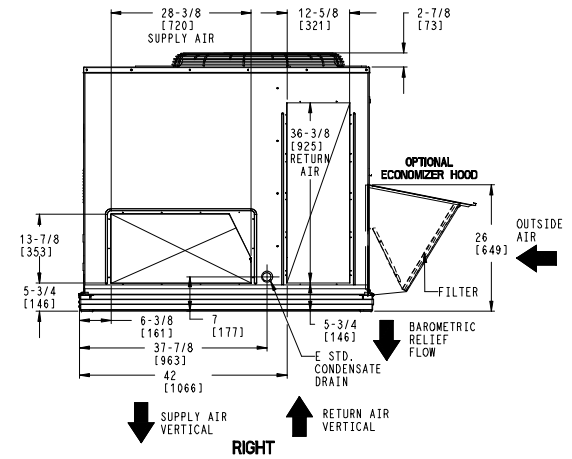
THIS DOCUMENT IS THE PROPERTY OF CARRIER CORPORATION AND IS DELIVERED UPON THE EXPRESS CONDITION THAT THE CONTENTS WILL NOT BE DISCLOSED OR USED WITHOUT CARRIER CORPORATION'S WRITTEN CONSENT.

SUBMISSION OF THESE DRAWINGS OR DOCUMENTS DOES NOT CONSTITUTE PART PERFORMANCE OR ACCEPTANCE OF CONTRACT.

CONNECTION SIZES		
A	1 3/8" [35]	FIELD POWER SUPPLY HOLE
B	2 1/2" [64]	POWER SUPPLY KNOCKOUT
C	1 3/4" [51]	Gauge ACCESS PLUG
D	7/8" [22]	FIELD CONTROL WIRING HOLE
E	3/4"-14 NPT	CONDENSATE DRAIN
G	2" [51]	POWER SUPPLY KNOCK-OUT

THRU-THE-BASE CHART THESE HOLES REQUIRED FOR USE CRBTMPWR02A01			
	THREADED CONDUIT SIZE	WIRE USE	REQ'D HOLE SIZES (MAX.)
W	1/2"	ACC.	7/8" [22.2]
X	1/2"	24V	7/8" [22.2]
Y	1 1/4" (002)	POWER	1 3/4" [44.4]

FOR "THRU-THE-BASEPAN" FACTORY OPTION, FITTINGS FOR ONLY X & Y ARE PROVIDED



ITC CLASSIFICATION	SHEET	DATE	SUPERCEDES	50FCQ 12 SINGLE ZONE ELECTRICAL HEAT PUMP	48TM009024	REV
U.S. ECCN: NSR	1 OF 3	04/01/22	-			-

# Certified Drawing for RTU-1-2

Project: Sephora Northridge - 2441018  
 Prepared By:

02/09/2024  
 12:36PM

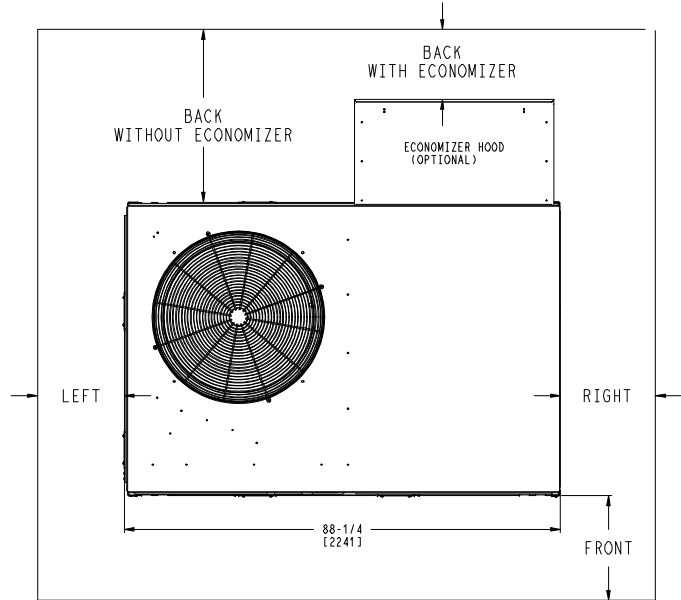
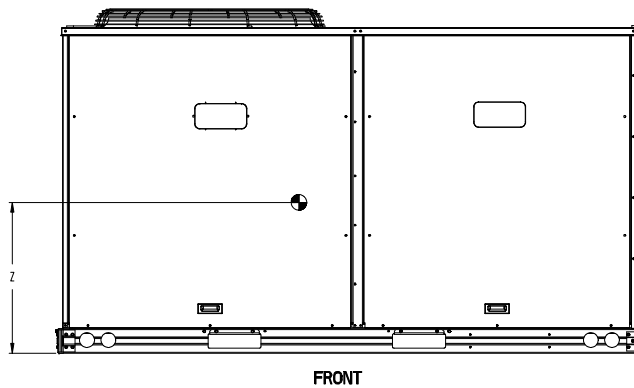
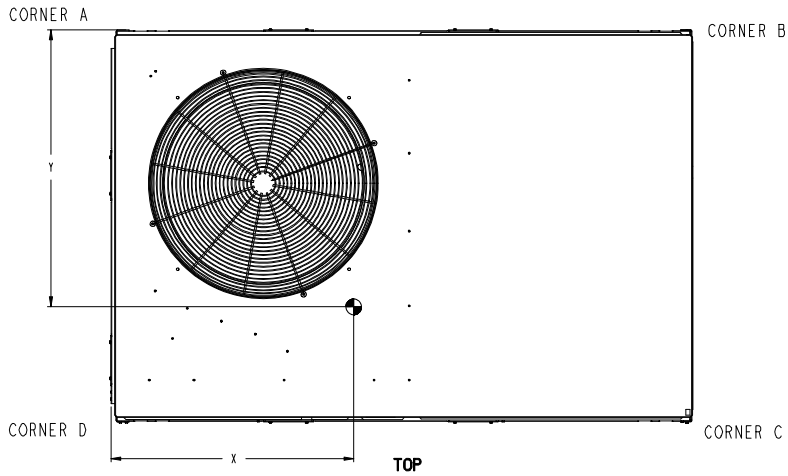
UNIT	OUTDOOR COIL TYPE	STD. UNIT WEIGHT***		CORNER WEIGHT (A)		CORNER WEIGHT (B)		CORNER WEIGHT (C)		CORNER WEIGHT (D)		C.G.					
		LBS.	KG.	LBS.	KG.	LBS.	KG.	LBS.	KG.	LBS.	KG.	X	Y	Z			
50FCQ-12	RTPF	955	433	190	86	243	110	293	133	229	104	49 1/2	[1257]	32 1/2	[826]	19 1/8	[486]

RTPF - ROUND TUBE, PLATE FIN (COPPER/ALUM)

\*\*\* STANDARD UNIT WEIGHT IS WITHOUT ELECTRIC HEAT AND WITHOUT PACKAGING. FOR OTHER OPTIONS AND ACCESSORIES, REFER TO THE PRODUCT DATA CATALOG.

THIS DOCUMENT IS THE PROPERTY OF CARRIER CORPORATION AND IS DELIVERED UPON THE EXPRESS CONDITION THAT THE CONTENTS WILL NOT BE DISCLOSED OR USED WITHOUT CARRIER CORPORATION'S WRITTEN CONSENT.

SUBMISSION OF THESE DRAWINGS OR DOCUMENTS DOES NOT CONSTITUTE PART PERFORMANCE OR ACCEPTANCE OF CONTRACT.



NOTE:

1. FOR ALL MINIMUM CLEARANCES LOCAL CODES OR JURISDICTIONS MAY PREVAIL.


SURFACE	CLEARANCE	
	SERVICE WITH CONDUCTIVE BARRIER	SERVICE WITH NONCONDUCTIVE BARRIER
FRONT	48 [1219mm]	36 [914mm]
LEFT	48 [1219mm]	42 [1067mm]
BACK W/O ECON	48 [1219mm]	42 [1067mm]
BACK W/ECON	36 [914mm]	36 [914mm]
RIGHT	36 [914mm]	36 [914mm]
TOP	72 [1829mm]	72 [1829mm]

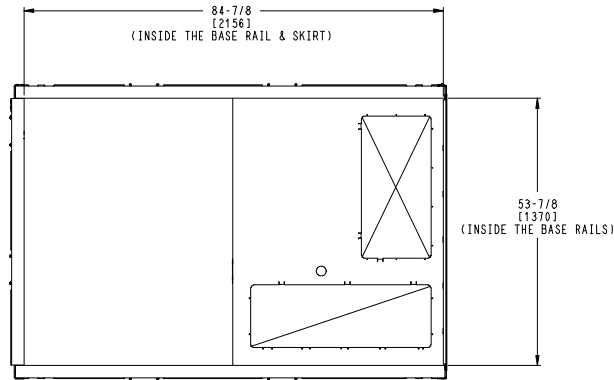
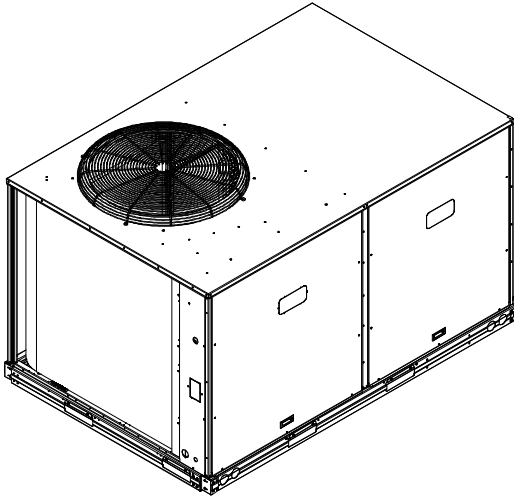
ITC CLASSIFICATION U.S. ECCN:NSR	SHEET 2 OF 3	DATE 04/01/22	SUPERCEDES -	50FCQ 12 SINGLE ZONE ELECTRICAL HEAT PUMP	48TM009024	REV -
-------------------------------------	-----------------	------------------	-----------------	---	------------	----------

# Certified Drawing for RTU-1-2

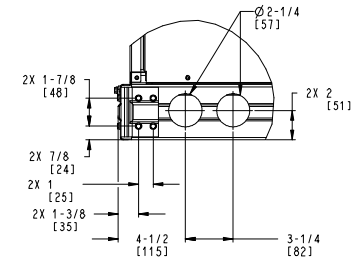
Project: Sephora Northridge - 2441018  
 Prepared By:

02/09/2024  
 12:36PM

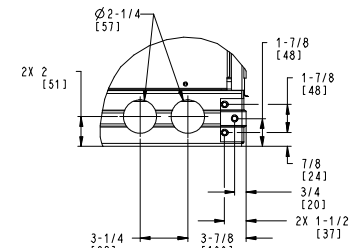
	THIS DOCUMENT IS THE PROPERTY OF CARRIER CORPORATION AND IS DELIVERED UPON THE EXPRESS CONDITION THAT THE CONTENTS WILL NOT BE DISCLOSED OR USED WITHOUT CARRIER CORPORATION'S WRITTEN CONSENT.	SUBMISSION OF THESE DRAWINGS OR DOCUMENTS DOES NOT CONSTITUTE PART PERFORMANCE OR ACCEPTANCE OF CONTRACT.
---	---	---



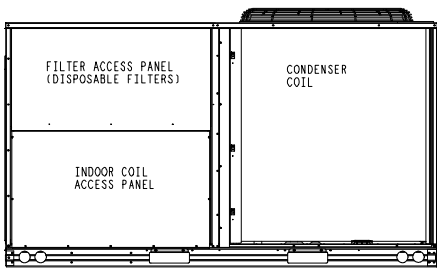
INSIDE BASERAIL DIMENSIONS  
**BOTTOM**



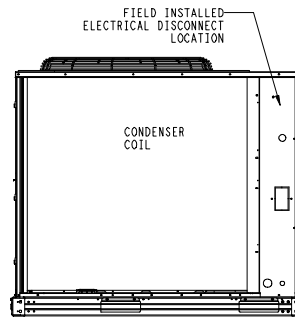
**DETAIL B**  
 TYP 2 PLCS



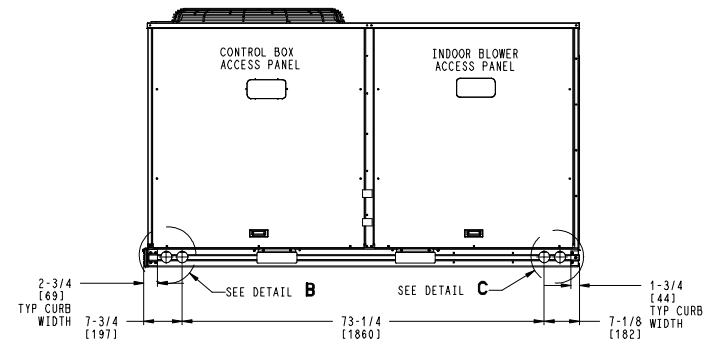
**DETAIL C**  
 TYP 2 PLCS



**BACK**



**LEFT**



**FRONT**

ITC CLASSIFICATION	SHEET	DATE	SUPERCEDES	50FCQ 12 SINGLE ZONE ELECTRICAL HEAT PUMP	48TM009024	REV
U. S. ECCN: NSR	3 OF 3	04/01/22	-			-

## Performance Summary For RTU-1-2

Project: Sephora Northridge - 2441018  
Prepared By:

02/09/2024  
12:36PM

### Part Number:50FCQM12A2A5-0A4C0

ARI EER:.....11.00  
IEER:.....15.0

#### Base Unit Dimensions

Unit Length:.....88.1 in  
Unit Width:.....59.5 in  
Unit Height:.....49.4 in

Base Unit Weight (Does not include any accessories):.....955 lb

#### Unit

Unit Voltage-Phase-Hertz:.....208-3-60  
Air Discharge:.....Horizontal  
Fan Drive Type:.....Vane Axial  
Actual Airflow:.....3500 CFM  
Site Altitude:.....0 ft

#### Cooling Performance

Condenser Entering Air DB:.....95.0 F  
Evaporator Entering Air DB:.....80.0 F  
Evaporator Entering Air WB:.....67.0 F  
Entering Air Enthalpy:.....31.44 BTU/lb  
Evaporator Leaving Air DB:.....57.1 F  
Evaporator Leaving Air WB:.....55.9 F  
Evaporator Leaving Air Enthalpy:.....23.68 BTU/lb  
Gross Cooling Capacity:.....122.26 MBH  
Gross Sensible Capacity:.....86.46 MBH  
Compressor Power Input:.....8.80 kW  
Coil Bypass Factor:.....0.036

#### Heating Performance

Outdoor Ambient Temperature:.....47.0 F  
Entering Air Indoor Coil DB:.....70.0 F  
Leaving Air Indoor Coil DB:.....100.4 F  
Total Heating Capacity:.....114.75 MBH  
Integrated Heating Capacity:.....114.75 MBH  
Heating Power Input:.....9.63 kW  
High Temperature COP:.....3.40  
Low Temperature COP:.....2.25

#### Supply Fan

External Static Pressure:.....1.00 in wg  
Options / Accessories Static Pressure  
Economizer:.....0.21 in wg  
Power Exhaust:.....(Fan Data Includes Drop)  
Application External Static (ESP + Unit Opts/Acc.):.....1.21 in wg  
Fan RPM:.....1680  
Fan Power:.....1.67 BHP  
NOTE:.....Selected IFM RPM Range: 990 - 2000

Selection includes construction throwaway filter into the base fan curve. This filter is not MERV Rated.

#### Power Exhaust

Return Duct Static:.....0.40 in wg  
Max. Air To Exhaust:.....2850 CFM

#### Electrical Data

Voltage Range:.....187 - 253  
Compressor #1 RLA:.....15.6

## Performance Summary For RTU-1-2

Project: Sephora Northridge - 2441018  
 Prepared By:

02/09/2024  
 12:36PM

Compressor #1 LRA:	110
Compressor #2 RLA:	15.6
Compressor #2 LRA:	110
Indoor Fan Motor Type:	<b>MED</b>
Indoor Fan Motor FLA (Total):	6.4
Power Supply MCA:	53
Power Supply MOCP (Fuse or HACR):	60
Disconnect Size FLA:	56
Disconnect Size LRA:	240
Electrical Convenience Outlet:	<b>None</b>
Power Exhaust [Kit Qty / FLA(ea kit)]:	1 / 3.8
Outdoor Fan [Qty / FLA (ea)]:	1 / 7.4

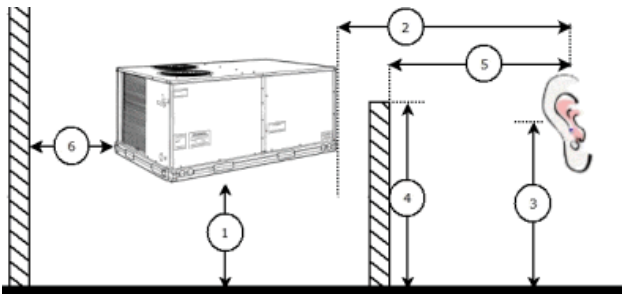
**Control Panel SCCR: 5kA RMS at Rated Symmetrical Voltage**

**Acoustics**

Sound Power Levels, db re 10E-12 Watts

	Discharge	Inlet	Outdoor
63 Hz	97.5	94.8	88.1
125 Hz	92.0	85.3	90.0
250 Hz	76.5	71.7	85.9
500 Hz	69.3	62.8	83.0
1000 Hz	67.6	60.7	81.6
2000 Hz	66.6	58.9	78.5
4000 Hz	71.4	59.8	76.4
8000 Hz	72.4	60.2	75.5
A-Weighted	80.2	73.6	87.0

**Advanced Acoustics**



**Advanced Acoustics Parameters**

- 1. Unit height above ground:.....**30.0** ft
- 2. Horizontal distance from unit to receiver:.....**50.0** ft
- 3. Receiver height above ground:.....**5.7** ft
- 4. Height of obstruction:.....**0.0** ft
- 5. Horizontal distance from obstruction to receiver:.....**0.0** ft
- 6. Horizontal distance from unit to obstruction:.....**0.0** ft

**Detailed Acoustics Information**

Octave Band Center Freq. Hz	63	125	250	500	1k	2k	4k	8k	Overall
A	88.1	90.0	85.9	83.0	81.6	78.5	76.4	75.5	94.0 Lw
B	61.9	73.9	77.3	79.8	81.6	79.7	77.4	74.4	87.0 LwA

# Performance Summary For RTU-1-2

Project: Sephora Northridge - 2441018  
 Prepared By:

02/09/2024  
 12:36PM

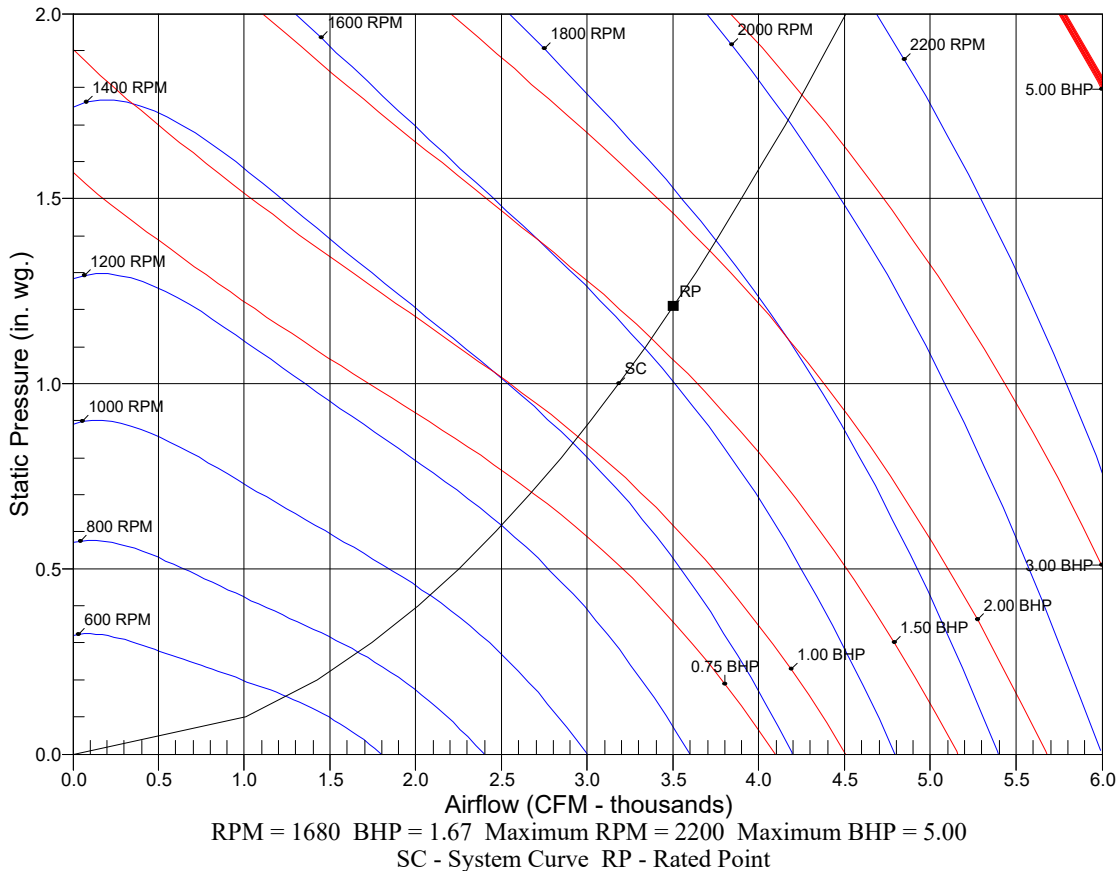
C	55.7	57.6	53.5	50.6	49.2	46.1	44.0	43.1	61.6 Lp
D	29.5	41.5	44.9	47.4	49.2	47.3	45.0	42.0	54.6 LpA

**Legend**

- A Sound Power Levels at Unit's Acoustic Center, Lw
- B A-Weighted Sound Power Levels at Unit's Acoustic Center, LwA
- C Sound Pressure Levels at Specific Distance from Unit, Lp
- D A-Weighted Sound Pressure Levels at Specific Distance from Unit, LpA

Calculation methods used in this program are patterned after the ASHRAE Guide; other ASHRAE Publications and the AHRI Acoustical Standards. While a very significant effort has been made to insure the technical accuracy of this program, it is assumed that the user is knowledgeable in the art of system sound estimation and is aware of the tolerances involved in real world acoustical estimation. This program makes certain assumptions as to the dominant sound sources and sound paths which may not always be appropriate to the real system being estimated. Because of this, no assurances can be offered that this software will always generate an accurate sound prediction from user supplied input data. If in doubt about the estimation of expected sound levels in a space, an Acoustical Engineer or a person with sound prediction expertise should be consulted.

## Fan Curve



# Unit Feature Sheet for RTU-1-2

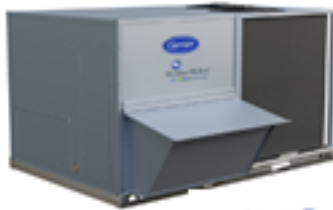
Project: Sephora Northridge - 2441018  
Prepared By:

02/09/2024  
12:36PM



## WeatherMaker<sup>®</sup> with ecoBlue<sup>™</sup> technology – 50FCQ

PACKAGED ROOFTOP HEAT PUMP UNITS  
15.0 IEER 7.5, 8.5, 10, 12.5 TONS



ecoblu<sup>™</sup> technology



### WEATHERMAKER<sup>®</sup> SERIES

50FCQ units are single packaged heat pump units with field installed electric heaters. The units are pre-wired and charged with Puron (R-410) refrigerant and factory tested in both heating and cooling modes. All models use two stage cooling capacity control with a full active evaporator coil and new EcoBlue<sup>™</sup> direct drive ECM indoor fan system

Approved and certified by:



Use of the AHRI Certified TM Mark indicates a manufacturer's participation in the program. For verification of certification for individual products, go to [www.ahridirectory.org](http://www.ahridirectory.org).

#### STANDARD FEATURES INCLUDE:

- Rated in accordance with AHRI Standards 340/360
- Puron (R-410A) HFC refrigerant
- Two-stage cooling capacity control on all models
- IEER's of 15.0, COP's up to 3.4
- Exceeds current DOE IEER efficiencies while meeting DOE's new stringent 2023 IEER efficiency requirements
- 2023 DOE, ASHRAE 90.1, and IECC energy compliant
- New Direct Drive – EcoBlue<sup>™</sup> Technology Indoor fan system uses Vane Axial fan design and electronically commutated motor. Indoor fan motor also delivers Staged Air Volume (SAV) fan speed control.
- Non-corrosive composite condensate pan in accordance with ASHRAE 62 Standard, sloping design; side or center drain
- TXV refrigerant metering system on all models
- Cooling operating range up to 125°F (52°C), and down to 40°F (4°C). Low Ambient kits allows cooling operation down to 0°F (-18°C) except on 12 size with standard operation down to 0°F (-18°C)
- Pre-painted exterior panels and primer-coated interior panels tested to 500 hours salt spray protection
- New Unit Control Board with intuitive quick fan speed adjustment
- Low pressure, high pressure switch protection

#### MAINTENANCE FEATURES:

- Access panels with easy grip handles
- Innovative easy starting, no-strip screws on unit access panels
- Two-inch disposable return air filters and Tool-less filter access door
- New slide out - Vane Axial evaporator-fan system has no fan bolts, pulleys, blower shaft and blower bearings

#### INSTALLATION FEATURES:

- Thru-the-bottom power entry capability
- Single point electric connections
- Full perimeter base nail with built-in rigging adapters and fork slots
- Field convertible from vertical to horizontal airflow. 14 size requires a special supply duct cover kit.

#### STANDARD WARRANTY:

- 5-year electric heaters
- 5-year compressor
- 3-year System/Vu<sup>™</sup>
- 1-year parts
- Many optional upgrades also available

#### OPTIONS INCLUDE BUT ARE NOT LIMITED TO:

- Intelligent System/Vu communicating controls
- Supply and Return Air Smoke Detectors, high static motors
- Lowvoted condenser coil guards
- Disconnect switch and convenience outlet options
- Corrosion resistant coil coating.
- MERV-13, 4" Return Air Filters
- Hinged access panels
- Integrated economizer system. Low and Ultra Low Leak versions
- Phase monitor and condensate overflow protection
- High SCOR Protection

For a complete list of options and accessories refer to Product Data

## Spec Sheet for RTU-1-2

Project: Sephora Northridge - 2441018  
Prepared By:

02/09/2024  
12:36PM

**RTU-3**

**Tag Cover Sheet  
Unit Report  
Certified Drawing  
Performance Report  
Unit Feature Sheet  
Spec Sheet**

## Unit Report For RTU-3

Project: Sephora Northridge - 2441018  
 Prepared By:

02/09/2024  
 12:36PM

### Unit Parameters

Unit Model:.....**50FCQA05A1A5-0A4C0**  
 Unit Size:.....**05 (4 Tons)**  
 Volts-Phase-Hertz:.....**208-3-60**  
 Heating Type:.....**Heat Pump**  
 Heat Control:.....**Single Stage Compressor Models**  
 Duct Cfg:.....**Horizontal Supply / Horizontal Return**

### Dimensions (ft. in.) & Weight (lb.) \*\*\*

Unit Length:.....**6' 2.375"**  
 Unit Width:.....**3' 10.625"**  
 Unit Height:.....**2' 9.375"**  
**Total Operating Weight:.....587 lb**

\*\*\* Weights and Dimensions are approximate. Weight does not include unit packaging. Approximate dimensions are provided primarily for shipping purposes. For exact dimensions and weights, refer to appropriate product data catalog.

### Lines and Filters

Return Air Filter Type:.....**Throwaway**  
 Return Air Filter Quantity:.....**2**  
 Return Air Filter Size:.....**16 x 25 x 2**

**Selection includes construction throwaway filter into the base fan curve. This filter is not MERV Rated.**

### Unit Configuration

Direct Drive - EcoBlue - Standard Static  
 Al/Cu - Al/Cu  
 Base Electro-mechanical controls  
 Hinged Panels and Unpowered Convenience Outlet  
 Non-Fused Disconnect  
 Standard Packaging

### Warranty Information

5-Year compressor parts (STD.)  
 1-Year parts (STD.)

No optional warranties were selected.

### Ordering Information

Part Number	Description	Quantity
50FCQA05A1A5-0A4C0	Rooftop Unit	1
<b>Field Installed Accessories</b>		
CRECOMZR077A00	STANDARD LEAK - Horizontal EconoMi\$er X with solid-state W7220 controller	1
CRHNGPNL001A00	Hinged Access Door	1
CRLVHLGD047A00	Louvered Condenser Coil Hail Guard	1
CRPWREXH028A01	Horizontal Power Exhaust	1

# Certified Drawing for RTU-3

Project: Sephora Northridge - 2441018  
Prepared By:

02/09/2024  
12:36PM

**NOTES:**

1. DIMENSIONS ARE IN INCHES. DIMENSIONS IN ( ) ARE IN MILLIMETERS.
2. CENTER OF GRAVITY
3. DIRECTION OF AIR FLOW
4. ALL VIEW DRAWN USING 3RD ANGLE

UNIT	J	K
50FCQ+04	33 3/8 [847]	7 7/8 [200]
50FCQ+05	33 3/8 [847]	14 7/8 [377]
50FCQ+06	41 3/8 [1051]	18 5/8 [472]
50FCQ+07	41 3/8 [1051]	18 5/8 [472]



THIS DOCUMENT IS THE PROPERTY OF UTC CLIMATE, CONTROLS & SECURITY AND IS DELIVERED UPON THE EXPRESS CONDITION THAT THE CONTENTS WILL NOT BE DISCLOSED OR USED WITHOUT WRITTEN CONSENT.

SUBMISSION OF THESE DRAWINGS OR DOCUMENTS DOES NOT CONSTITUTE PART PERFORMANCE OR ACCEPTANCE OF CONTRACT.

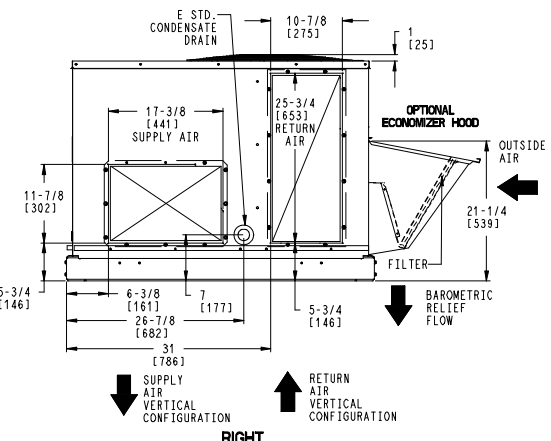
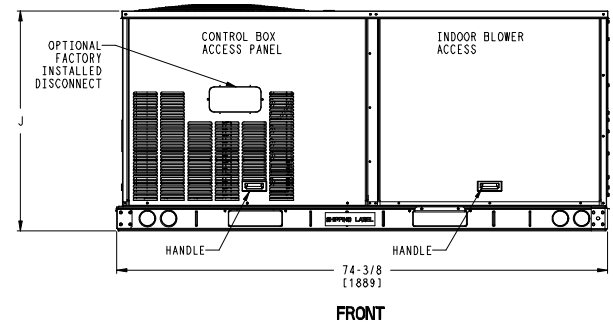
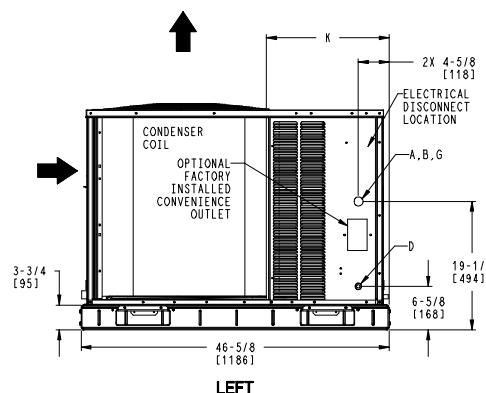
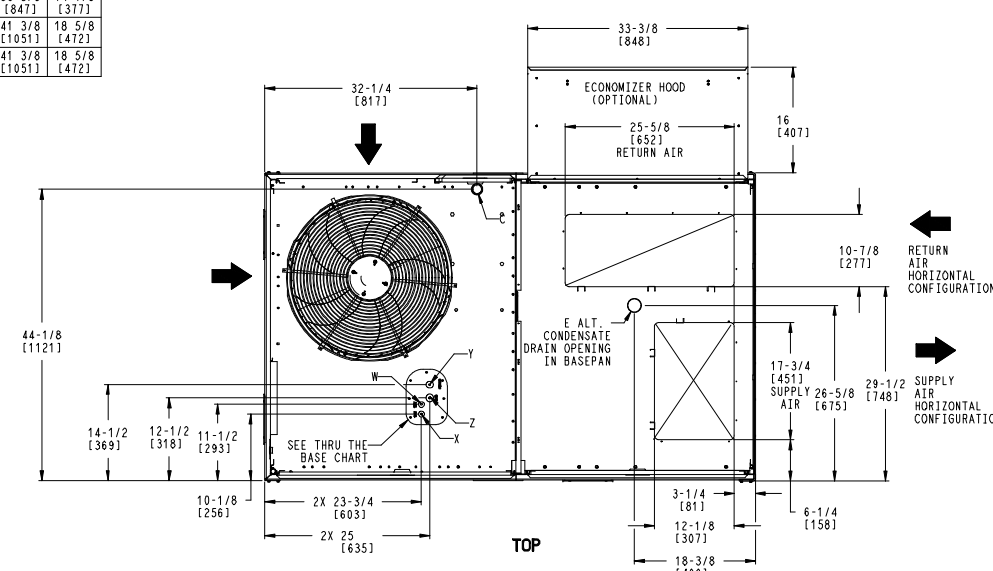
CONNECTION SIZES	
A	1 3/8" [35] DIA FIELD POWER SUPPLY HOLE
B	2" [51] DIA POWER SUPPLY KNOCKOUT
C	1 3/4" [44] DIA GAUGE ACCESS PLUG
D	7/8" [22] DIA FIELD CONTROL WIRING HOLE
E	3/4"-14 NPT CONDENSATE DRAIN
G	2 1/2" [64] DIA POWER SUPPLY KNOCK-OUT

THRU-THE-BASE CHART THESE HOLES REQUIRED FOR USE CR0TMPWR008A00, 009A00			
	THREADED CONDUIT SIZE	WIRE USE	REQ'D HOLE SIZES (MAX.)
W	1/2"	115V	7/8" [22.2]
X	1/2"	24V	7/8" [22.2]
Y *	3/4"	POWER	1 1/8" [28.6]
Z **	(009A00) 1/2" FPT	GAS	1 1/8" [28.6]

FOR "THRU-THE-BASEPAN" FACTORY OPTION, FITTINGS FOR ONLY X, Y, & Z ARE PROVIDED

\* SELECT EITHER 3/4" OR 1/2" FOR POWER, DEPENDING ON WIRE SIZE

\*\* (008A00) PROVIDES 3/4" FPT THRU CURB FLANGE & FITTING.



ITC CLASSIFICATION	SHEET	DATE	SUPERCEDES	50FCQ 04-07 SINGLE PACKAGE HEAT PUMP	48TC003348	REV
U.S. ECCN:NSR	1 OF 3	08/15/19	-			-

# Certified Drawing for RTU-3

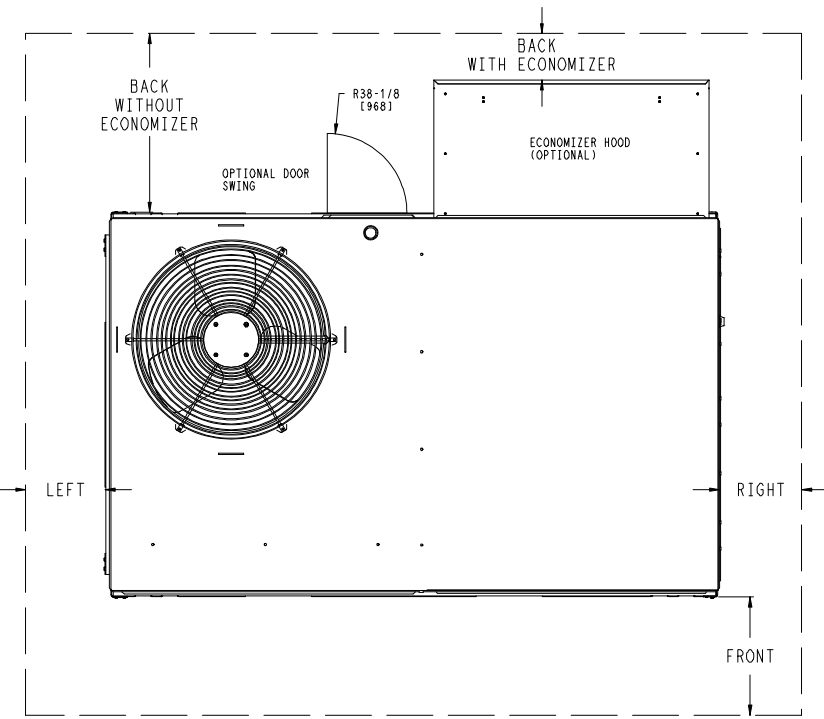
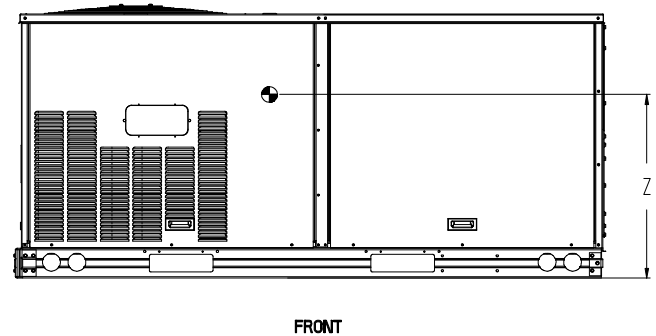
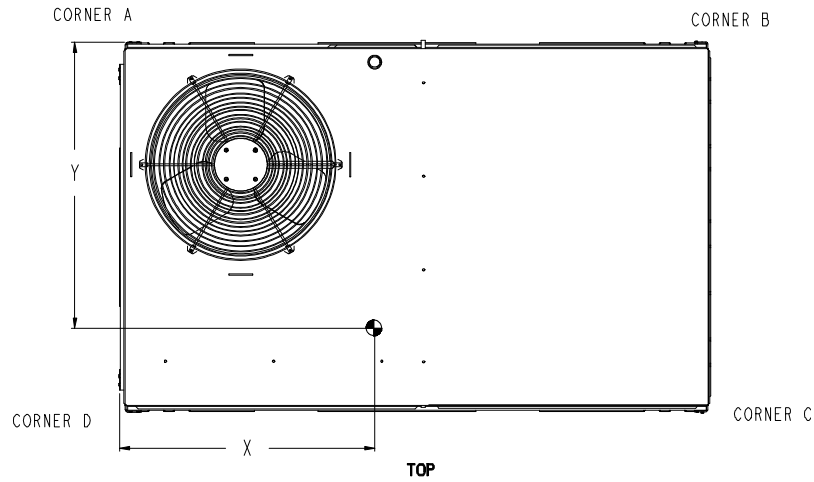
Project: Sephora Northridge - 2441018  
 Prepared By:

02/09/2024  
 12:36PM

UNIT	STD. UNIT WEIGHT*		CORNER WEIGHT (A)		CORNER WEIGHT (B)		CORNER WEIGHT (C)		CORNER WEIGHT (D)		C.G.		HEIGHT
	LBS.	KG.	LBS.	KG.	LBS.	KG.	LBS.	KG.	LBS.	KG.	X	Y	
50FCO*04	467	212	126	57	118	53	108	49	115	52	36 [914]	22 3/8 [568]	16 1/8 [410]
50FCO*05	473	215	127	58	119	54	110	50	117	53	36 [914]	22 3/8 [568]	16 1/8 [410]
50FCO*06	584	265	160	72	145	66	133	60	146	66	35 3/8 [898]	22 5/16 [557]	16 1/2 [419]
50FCO*07	589	267	161	73	146	66	134	61	147	67	35 3/8 [898]	22 5/16 [557]	16 1/2 [419]

\* STANDARD UNIT WEIGHT IS WITHOUT ELECTRIC HEAT AND WITHOUT PACKAGING.  
 FOR OTHER OPTIONS AND ACCESSORIES, REFER TO THE PRODUCT DATA CATALOG.

**Carrier** THIS DOCUMENT IS THE PROPERTY OF UTC CLIMATE, CONTROLS & SECURITY AND IS DELIVERED UPON THE EXPRESS CONDITION THAT THE CONTENTS WILL NOT BE DISCLOSED OR USED WITHOUT WRITTEN CONSENT. SUBMISSION OF THESE DRAWINGS OR DOCUMENTS DOES NOT CONSTITUTE PART PERFORMANCE OR ACCEPTANCE OF CONTRACT.



NOTE:  
 1. FOR ALL MINIMUM CLEARANCES LOCAL CODES OR JURISDICTIONS MAY PREVAIL.

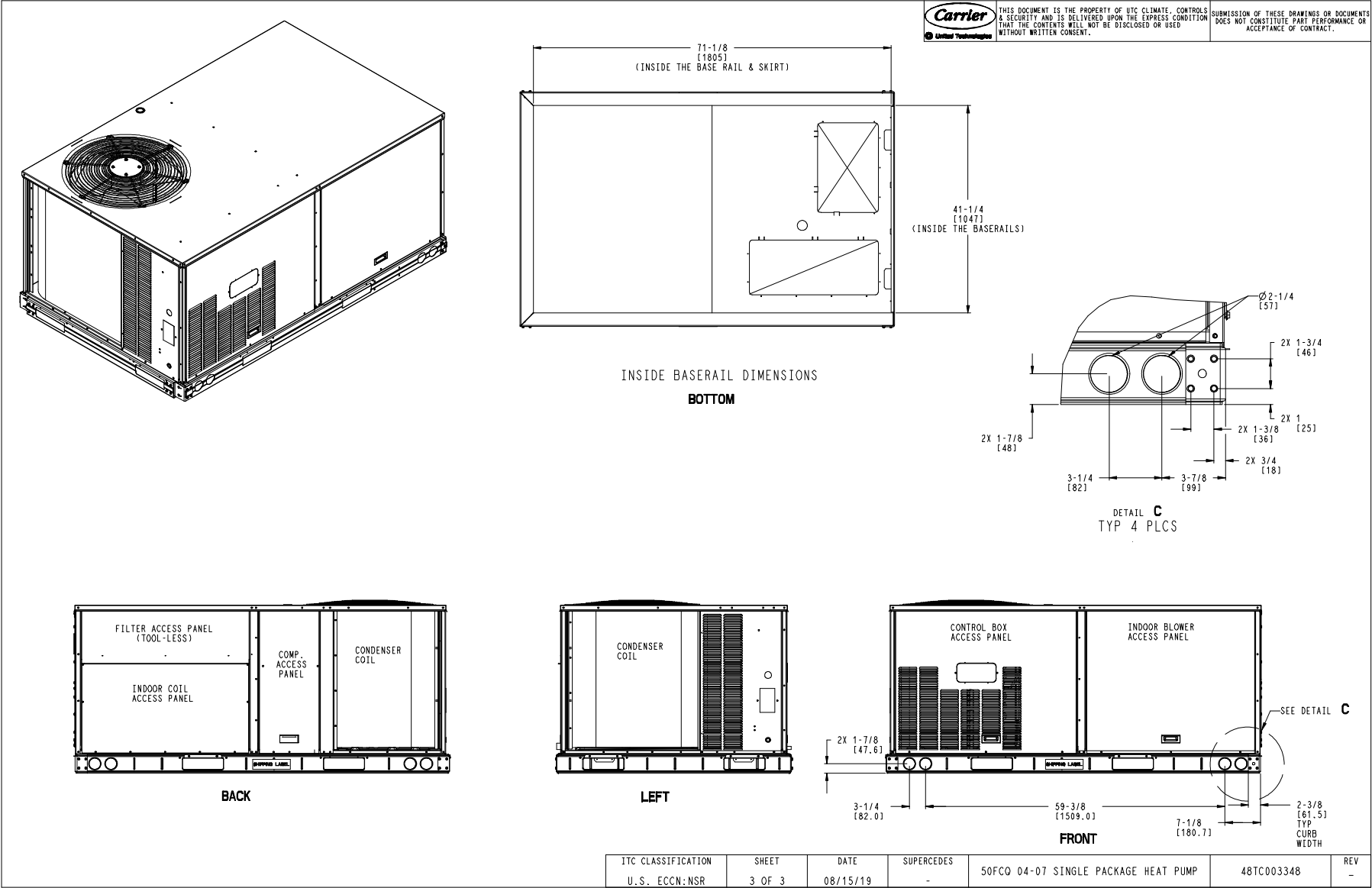
SURFACE	CLEARANCE		OPERATING CLEARANCE
	SERVICE WITH CONDUCTIVE BARRIER	SERVICE WITH NONCONDUCTIVE BARRIER	
FRONT	48 [1219mm]	36 [914mm]	18 [457mm]
LEFT	48 [1219mm]	42 [1067mm]	18 [457mm]
BACK W/O ECON	48 [1219mm]	42 [1067mm]	18 [457mm]
BACK W/ECON	36 [914mm]	36 [914mm]	18 [457mm]
RIGHT	36 [914mm]	36 [914mm]	18 [457mm]
TOP	72 [1829mm]	72 [1829mm]	72 [1829mm]

ITC CLASSIFICATION	SHEET	DATE	SUPERCEDES	50FCO 04-07 SINGLE PACKAGE HEAT PUMP	48TC003348	REV
U.S. ECCN: NSR	2 OF 3	08/15/19	-			-

# Certified Drawing for RTU-3

Project: Sephora Northridge - 2441018  
 Prepared By:

02/09/2024  
 12:36PM



# Performance Summary For RTU-3

Project: Sephora Northridge - 2441018  
Prepared By:

02/09/2024  
12:36PM

## Part Number:50FCQA05A1A5-0A4C0

ARI SEER:.....14.30

### Base Unit Dimensions

Unit Length:.....74.4 in  
Unit Width:.....46.6 in  
Unit Height:.....33.4 in

### Operating Weight

Base Unit Weight:.....473 lb  
Hinged Panels and Unpowered Convenience Outlet:.....9 lb  
Non-Fused Disconnect:.....5 lb

### Accessories

STANDARD LEAK - Horizontal EconoMi\$er X with solid-state W7220 controller:.....70 lb  
Horizontal Power Exhaust:.....30 lb

Total Operating Weight:.....587 lb

### Unit

Unit Voltage-Phase-Hertz:.....208-3-60  
Air Discharge:.....Horizontal  
Fan Drive Type:.....Vane Axial  
Actual Airflow:.....1400 CFM  
Site Altitude:.....0 ft

### Cooling Performance

Condenser Entering Air DB:.....95.0 F  
Evaporator Entering Air DB:.....80.0 F  
Evaporator Entering Air WB:.....67.0 F  
Entering Air Enthalpy:.....31.44 BTU/lb  
Evaporator Leaving Air DB:.....56.6 F  
Evaporator Leaving Air WB:.....55.9 F  
Evaporator Leaving Air Enthalpy:.....23.70 BTU/lb  
Gross Cooling Capacity:.....48.75 MBH  
Gross Sensible Capacity:.....35.33 MBH  
Compressor Power Input:.....3.52 kW  
Coil Bypass Factor:.....0.095

### Heating Performance

Outdoor Ambient Temperature:.....47.0 F  
Entering Air Indoor Coil DB:.....70.0 F  
Leaving Air Indoor Coil DB:.....100.1 F  
Total Heating Capacity:.....45.55 MBH  
Integrated Heating Capacity:.....45.55 MBH  
Heating Power Input:.....3.22 kW  
High Temperature COP:.....3.70  
Low Temperature COP:.....2.28  
HSPF:.....8.2

### Supply Fan

External Static Pressure:.....0.80 in wg  
Options / Accessories Static Pressure  
Economizer:.....0.06 in wg  
Power Exhaust:.....(Fan Data Includes Drop)  
Application External Static (ESP + Unit Opts/Acc.):.....0.86 in wg  
Fan RPM:.....1777  
Fan Power:.....0.60 BHP  
NOTE:.....Selected IFM RPM Range: 190 - 1900

Selection includes construction throwaway filter into the base fan curve. This filter is not MERV Rated.

## Performance Summary For RTU-3

Project: Sephora Northridge - 2441018  
 Prepared By:

02/09/2024  
 12:36PM

### Power Exhaust

Return Duct Static: ..... **0.40** in wg  
 Max. Air To Exhaust: ..... **1300** CFM

### Electrical Data

Voltage Range: ..... **187 - 253**  
 Compressor #1 RLA: ..... **13.7**  
 Compressor #1 LRA: ..... **83**  
 Indoor Fan Motor Type: ..... **STD**  
 Indoor Fan Motor FLA (Total): ..... **5**  
 Power Supply MCA: ..... **26**  
 Power Supply MOCP (Fuse or HACR): ..... **30**  
 Disconnect Size FLA: ..... **25**  
 Disconnect Size LRA: ..... **96**  
 Electrical Convenience Outlet: ..... **None**  
 Power Exhaust [Kit Qty / FLA(ea kit)]: ..... **1 / 1.9**  
 Outdoor Fan [Qty / FLA (ea)]: ..... **1 / 1.5**

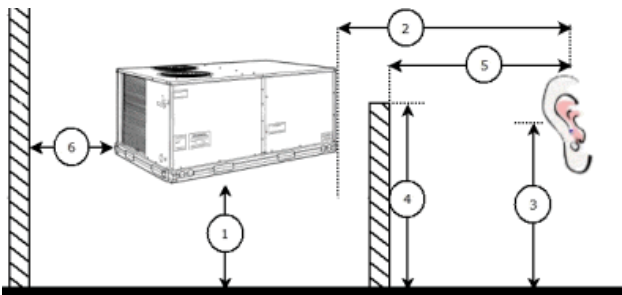
### Control Panel SCCR: 5kA RMS at Rated Symmetrical Voltage

### Acoustics

Sound Power Levels, db re 10E-12 Watts

	Discharge	Inlet	Outdoor
63 Hz	92.0	88.3	85.6
125 Hz	82.6	76.9	84.7
250 Hz	76.1	71.1	80.5
500 Hz	70.4	62.6	76.0
1000 Hz	66.7	65.0	72.4
2000 Hz	63.6	56.2	68.0
4000 Hz	61.0	50.1	62.8
8000 Hz	58.4	44.0	59.3
A-Weighted	74.6	69.7	79.0

### Advanced Acoustics



### Advanced Acoustics Parameters

1. Unit height above ground: ..... **30.0** ft  
 2. Horizontal distance from unit to receiver: ..... **50.0** ft  
 3. Receiver height above ground: ..... **5.7** ft  
 4. Height of obstruction: ..... **0.0** ft  
 5. Horizontal distance from obstruction to receiver: ..... **0.0** ft  
 6. Horizontal distance from unit to obstruction: ..... **0.0** ft

### Detailed Acoustics Information

# Performance Summary For RTU-3

Project: Sephora Northridge - 2441018  
 Prepared By:

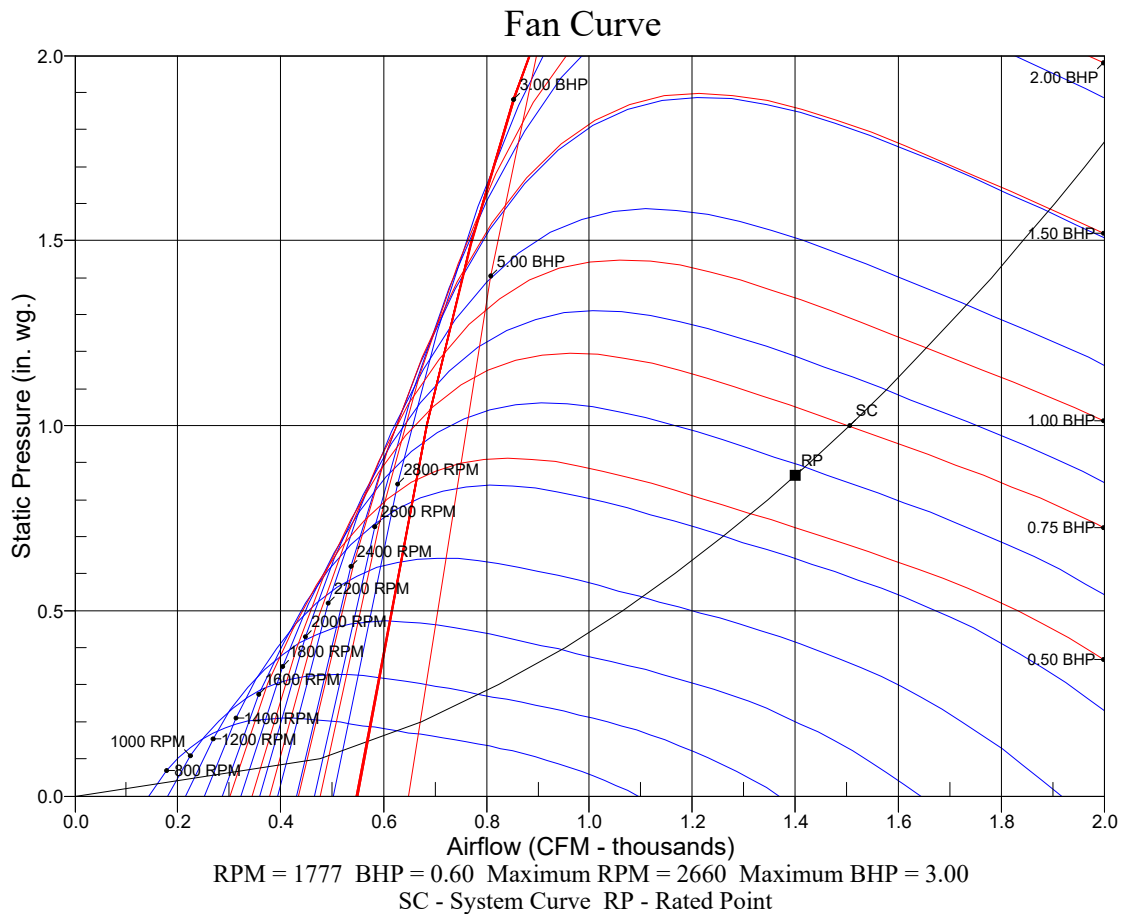
02/09/2024  
 12:36PM

Octave Band Center Freq. Hz	63	125	250	500	1k	2k	4k	8k	Overall
A	85.6	84.7	80.5	76.0	72.4	68.0	62.8	59.3	89.2 Lw
B	59.4	68.6	71.9	72.8	72.4	69.2	63.8	58.2	78.5 LwA
C	53.2	52.3	48.1	43.6	40.0	35.6	30.4	26.9	56.8 Lp
D	27.0	36.2	39.5	40.4	40.0	36.8	31.4	25.8	46.1 LpA

**Legend**

- A Sound Power Levels at Unit's Acoustic Center, Lw
- B A-Weighted Sound Power Levels at Unit's Acoustic Center, LwA
- C Sound Pressure Levels at Specific Distance from Unit, Lp
- D A-Weighted Sound Pressure Levels at Specific Distance from Unit, LpA

Calculation methods used in this program are patterned after the ASHRAE Guide; other ASHRAE Publications and the AHRI Acoustical Standards. While a very significant effort has been made to insure the technical accuracy of this program, it is assumed that the user is knowledgeable in the art of system sound estimation and is aware of the tolerances involved in real world acoustical estimation. This program makes certain assumptions as to the dominant sound sources and sound paths which may not always be appropriate to the real system being estimated. Because of this, no assurances can be offered that this software will always generate an accurate sound prediction from user supplied input data. If in doubt about the estimation of expected sound levels in a space, an Acoustical Engineer or a person with sound prediction expertise should be consulted.



# Unit Feature Sheet for RTU-3

Project: Sephora Northridge - 2441018  
Prepared By:

02/09/2024  
12:36PM



## PACKAGED ROOFTOP ELECTRIC COOLING/ELECTRIC HEATING UNITS 3, 4, 5 TONS - 13.4 SEER2, 14.0 SEER, 6 TON - 15.2 IEER



### WEATHERMAKER SERIES

50FCQ units are single packaged heat pump, electric units that are pre-wired and charged with Puron (R-410) refrigerant. The units are factory tested in both heating and cooling modes. Units are rated in accordance with AHRI Standards 210/240 (04-06 sizes) and 340/360 (07 size). 3-5 ton models use single stage cooling capacity control. 6 ton model uses two stage cooling capacity control.

Approved and certified by:



#### STANDARD FEATURES INCLUDE:

- Puron (R-410A) HFC refrigerant
- Meets or exceeds ASHRAE 90.1 energy efficiency levels
- Scroll compressors with internal line break and overload protection
- Single-stage cooling capacity 04-06 models, Two Stage on 07 models
- SEER2's up to 13.4, HSPF2's up to 7.0
- SEER's to 14.2, SEER2's to 13.4, IEER's to 15.2
- Acutrol™ refrigerant metering system on 04-06 models, TXV on 07 size models
- Exclusive non-corrosive composite condensate pan in accordance with ASHRAE Standard 62, sloping design, side or center drain
- Standard cooling operation up to 115°F (46°C) and down to 40°F (4°C) - down to 25° F (-4° C) with winter start kit.
- Pre-painted exterior panels and primer-coated interior panels tested to 500 hours salt spray protection
- Fully insulated cabinet
- NEW Direct Drive – EcoBlue™ Technology Indoor fan system uses Vane Axial fan design and electronically commutated motor
- New Unit Control Board with intuitive quick fan speed adjustment
- Low pressure and high pressure switch protected.

#### MAINTENANCE FEATURES:

- Access panels with easy grip handles
- Innovative easy starting, no-strip screws on unit access panels
- Two-inch disposable return air filters and Tool-less filter access door
- New unit control board to facilitate simple safety circuit troubleshooting and simplified control box arrangement

#### INSTALLATION FEATURES:

- Thru-the-bottom power entry capability
- Single point electric connections
- Full perimeter base rail with built-in rigging adapters and fork slots
- Field convertible from vertical to horizontal airflow

#### STANDARD WARRANTY:

- 5-year electric heaters
- 5-year compressor
- 3-year SystemVu™
- 1-year parts
- Many optional upgrades also available

#### OPTIONS INCLUDE BUT ARE NOT LIMITED TO:

- Intelligent SystemVu communicating controls
- RTU Open Multi-Protocol DDC Controls
- Supply and Return Air Smoke Detectors, high static motors
- Louvered condenser coil guards
- Disconnect switch and convenience outlet options
- Corrosion resistant coil coating.
- MERV-8 and 13 Return Air Filters
- Patented Humidi-MiZer® adaptive dehumidification system.
- Hinged access panels
- Integrated economizer system. Low and Ultra Low Leak versions
- Phase Monitor Protection
- Condensate Overflow Protection

For a complete list of options and accessories refer to the Product Data Catalog for this unit.

## Spec Sheet for RTU-3

Project: Sephora Northridge - 2441018  
Prepared By:

02/09/2024  
12:36PM