









Chick-fil-A

Chick-fil-A  
5200 Buffington Road  
Atlanta, Georgia  
30349-2998

INTERPLAN  
INTERPLAN LLC  
AR99238  
CA 8660

ARCHITECTURE  
ENGINEERING  
PERMITTING

220 E. CENTRAL PKWY, STE 4000  
ALAMONTE SPRINGS, FL 32701  
407.645.5038

SEAL:

FOR  
INFORMATION  
ONLY

CHICK-FIL-A  
COLLECTION AT FORSYTH  
430 PEACHTREE PKWY  
CUMMING, GA 30041

FSR# 02242

BUILDING TYPE / SIZE: S06 C-R

RELEASE: 23.04

PRINTED FOR: CONSTRUCTION

REVISION SCHEDULE

NO. DATE DESCRIPTION

CONSULTANT PROJECT # 2022-0669

DATE February 2024

DRAWN BY SE

CHECKED BY DAK

Information contained on this drawing and in all digital files produced for above named project may not be reproduced or used without express written or verbal consent from authorized project representatives.

SHEET HOOD DETAILS

SHEET NUMBER

MH1.2

Copyright © 2024 INTERPLAN LLC. ALL RIGHTS RESERVED. REPRODUCTION OR TRANSMISSION OF THIS DOCUMENT IS PROHIBITED WITHOUT THE WRITTEN PERMISSION OF INTERPLAN LLC.

Copyright © 2024 INTERPLAN LLC. ALL RIGHTS RESERVED. REPRODUCTION OR TRANSMISSION OF THIS DOCUMENT IS PROHIBITED WITHOUT THE WRITTEN PERMISSION OF INTERPLAN LLC.

Copyright © 2024 INTERPLAN LLC. ALL RIGHTS RESERVED. REPRODUCTION OR TRANSMISSION OF THIS DOCUMENT IS PROHIBITED WITHOUT THE WRITTEN PERMISSION OF INTERPLAN LLC.

Copyright © 2024 INTERPLAN LLC. ALL RIGHTS RESERVED. REPRODUCTION OR TRANSMISSION OF THIS DOCUMENT IS PROHIBITED WITHOUT THE WRITTEN PERMISSION OF INTERPLAN LLC.

Copyright © 2024 INTERPLAN LLC. ALL RIGHTS RESERVED. REPRODUCTION OR TRANSMISSION OF THIS DOCUMENT IS PROHIBITED WITHOUT THE WRITTEN PERMISSION OF INTERPLAN LLC.

Copyright © 2024 INTERPLAN LLC. ALL RIGHTS RESERVED. REPRODUCTION OR TRANSMISSION OF THIS DOCUMENT IS PROHIBITED WITHOUT THE WRITTEN PERMISSION OF INTERPLAN LLC.

Copyright © 2024 INTERPLAN LLC. ALL RIGHTS RESERVED. REPRODUCTION OR TRANSMISSION OF THIS DOCUMENT IS PROHIBITED WITHOUT THE WRITTEN PERMISSION OF INTERPLAN LLC.

Copyright © 2024 INTERPLAN LLC. ALL RIGHTS RESERVED. REPRODUCTION OR TRANSMISSION OF THIS DOCUMENT IS PROHIBITED WITHOUT THE WRITTEN PERMISSION OF INTERPLAN LLC.

Copyright © 2024 INTERPLAN LLC. ALL RIGHTS RESERVED. REPRODUCTION OR TRANSMISSION OF THIS DOCUMENT IS PROHIBITED WITHOUT THE WRITTEN PERMISSION OF INTERPLAN LLC.

Copyright © 2024 INTERPLAN LLC. ALL RIGHTS RESERVED. REPRODUCTION OR TRANSMISSION OF THIS DOCUMENT IS PROHIBITED WITHOUT THE WRITTEN PERMISSION OF INTERPLAN LLC.

Copyright © 2024 INTERPLAN LLC. ALL RIGHTS RESERVED. REPRODUCTION OR TRANSMISSION OF THIS DOCUMENT IS PROHIBITED WITHOUT THE WRITTEN PERMISSION OF INTERPLAN LLC.

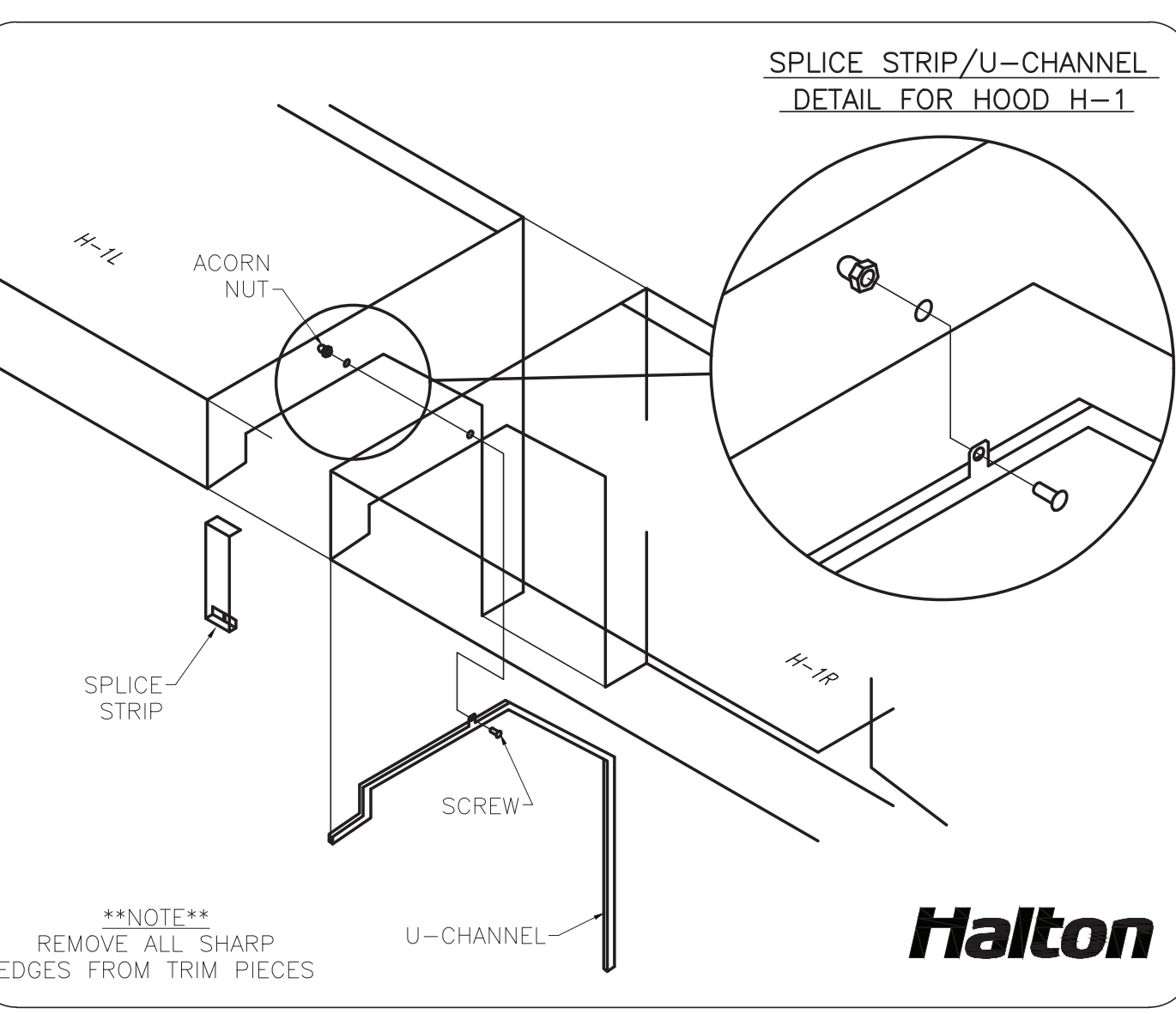
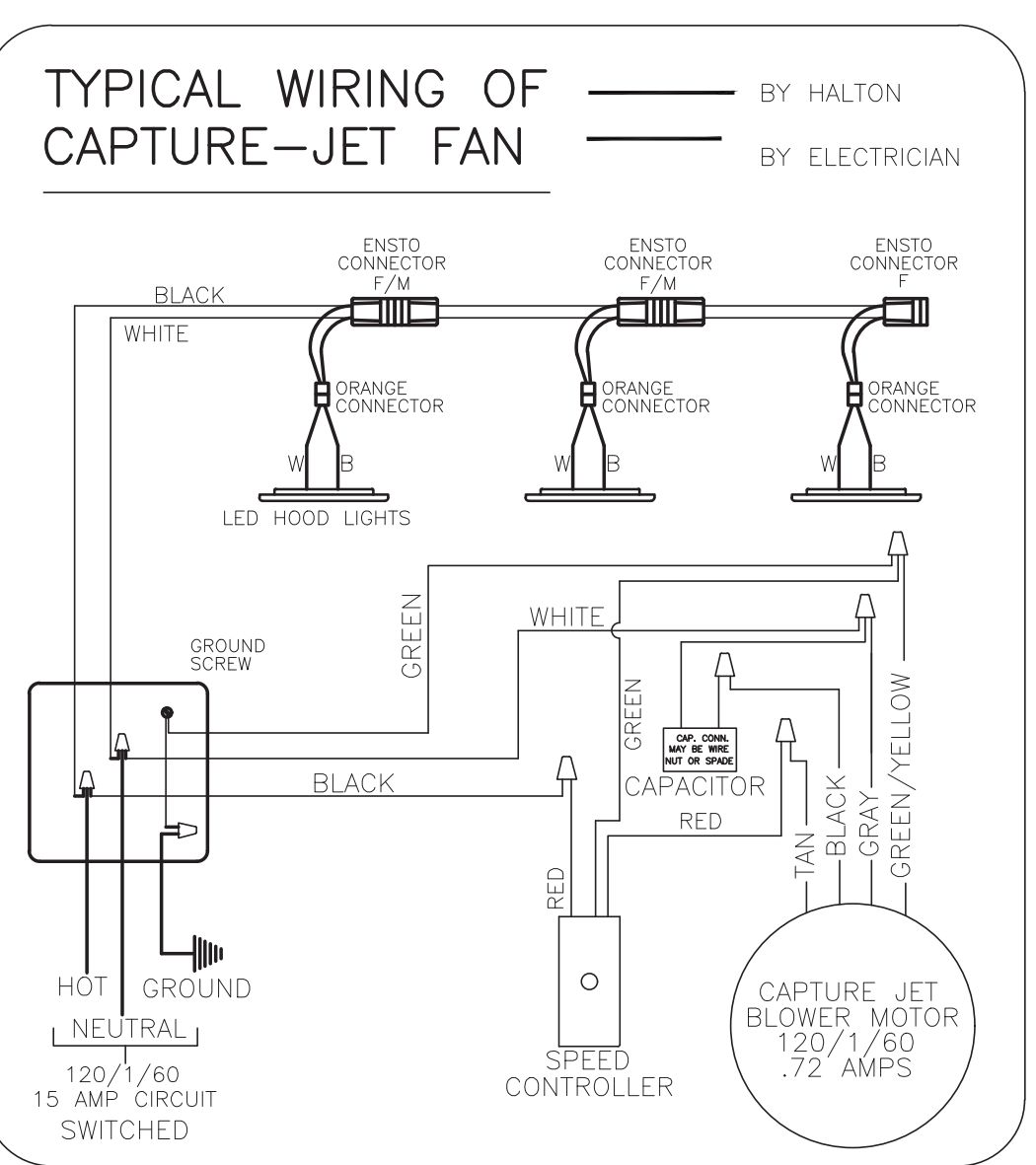
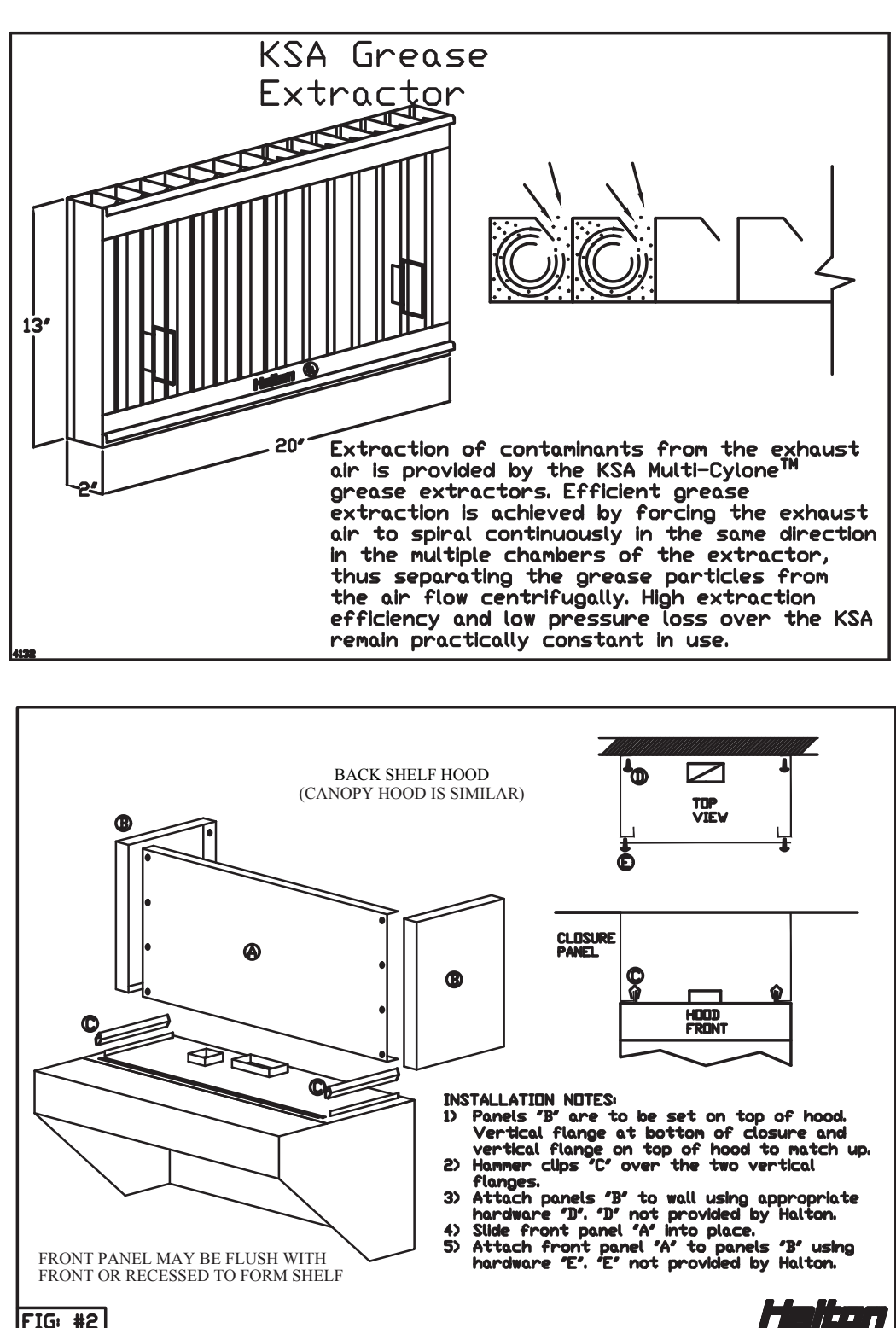
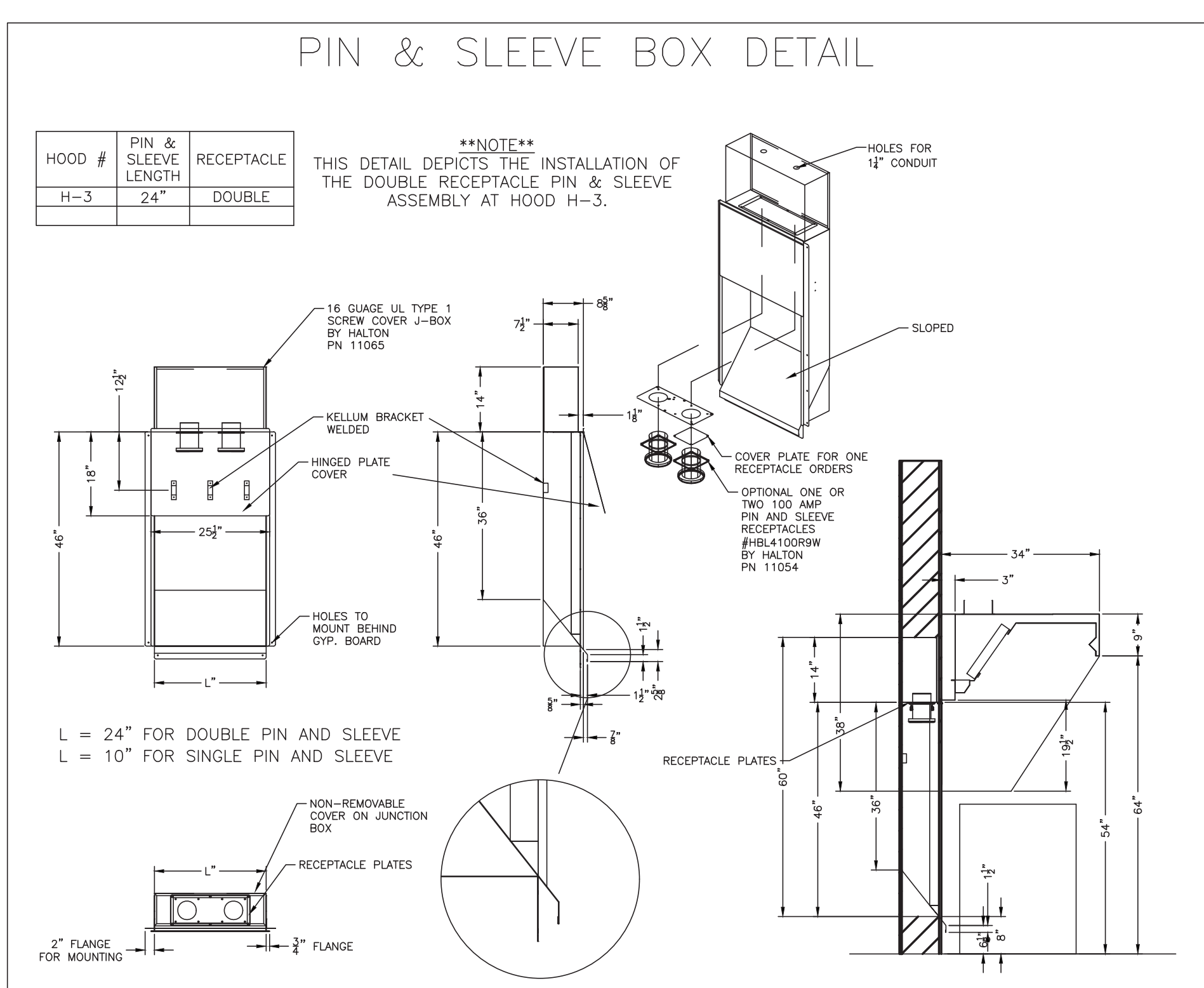
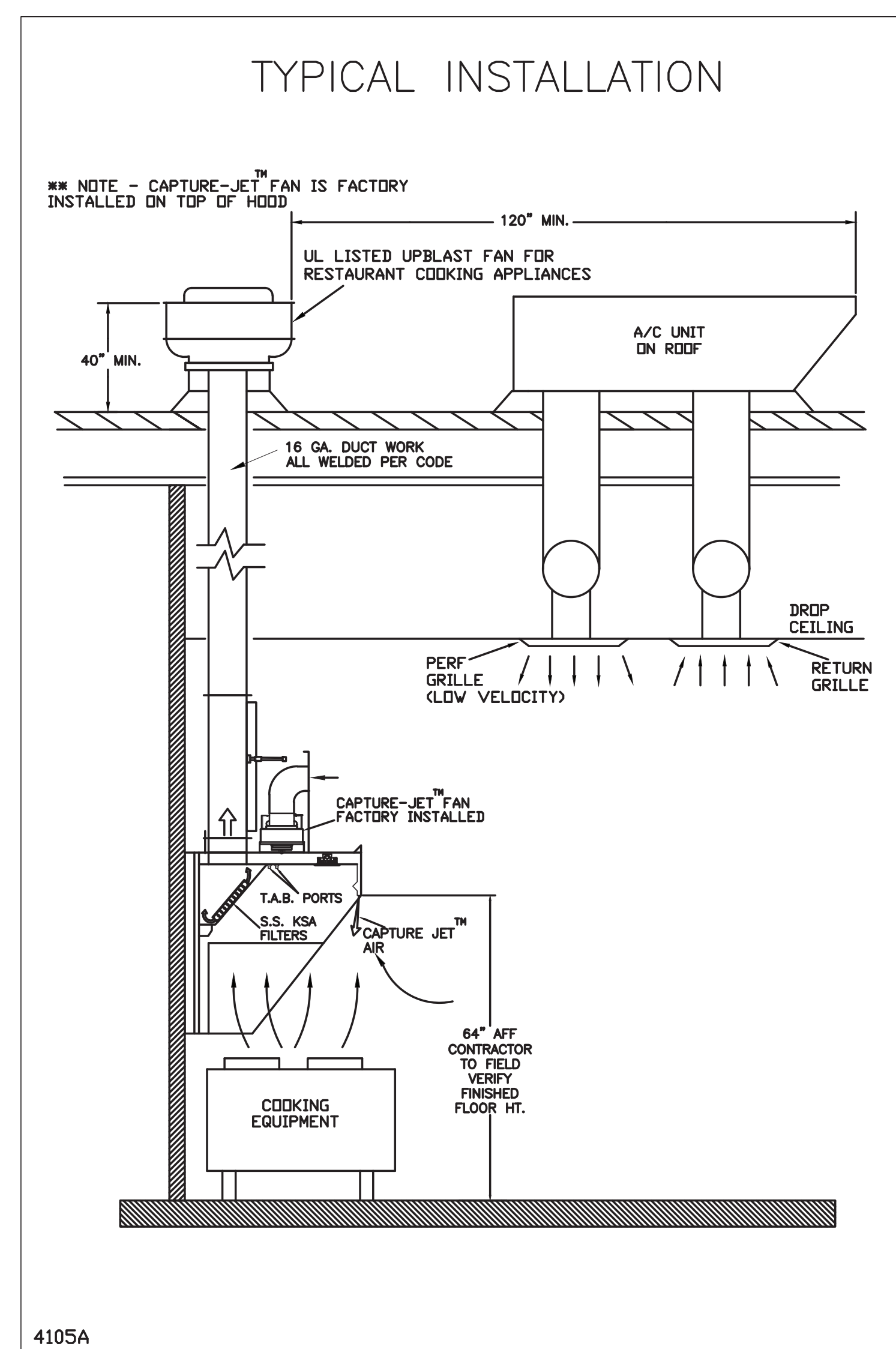
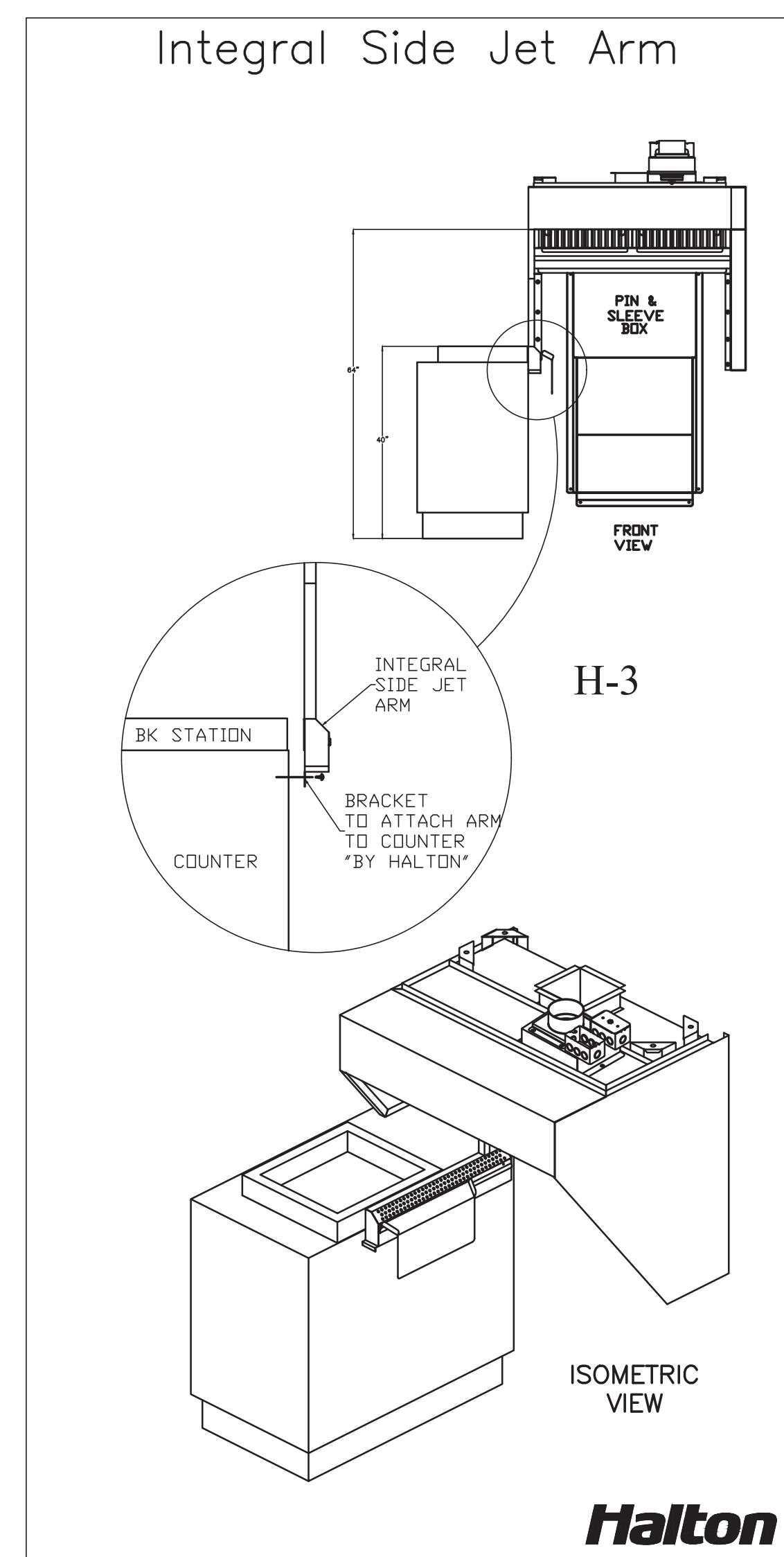
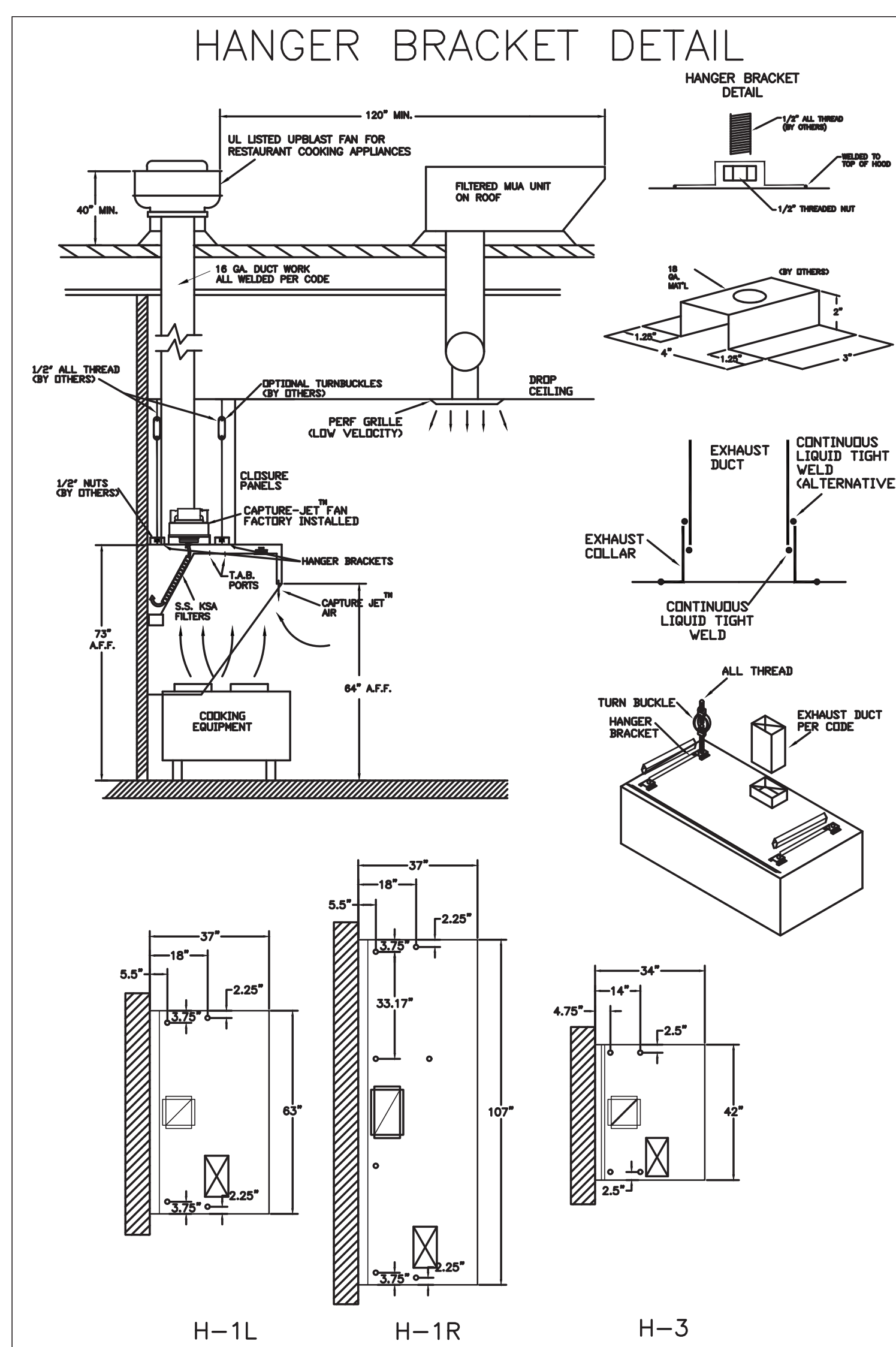
THIS DRAWING MUST BE CHECKED, SIGNED AND RETURNED TO THE APPROPRIATE FACTORY. PLEASE REFER TO THE FOLLOWING: 1. ALL DIMENSIONAL INFORMATION, MOUNTING POSITIONS AND CLEARANCES AND TYPE OF COOKING EQUIPMENT. 2. THE LOCATION AND TYPE OF COOKING EQUIPMENT. NOTE TO APPROVER: ANY CHANGES IN COOKING EQUIPMENT SUCH AS INCREASED ENERGY INPUTS OF EQUIPMENT AND/OR CHANGES IN COOKING EQUIPMENT LOCATION MUST BE APPROVED IN WRITING. CHANGES OCCUR: A. RECALCULATE EXHAUST AIRFLOW MAY BE REQUIRED. B. REUSE AND RESUBMIT. APPROVED FOR FABRICATION: WITH NO CHANGES WITH CHANGES AS NOTED. APPROVED BY: DATE



WEBSITE: www.halton.com  
MAIL APPROVED DRAWINGS TO APPROPRIATE FACTORY BELOW:  
HALTON CO. (USA)  
101 INDUSTRIAL DRIVE  
SCOTTSVILLE, KY 42164  
1-270-237-5600  
DATE: \_\_\_\_\_ BY: \_\_\_\_\_

REVISION DESCRIPTION  
REV. 1: \_\_\_\_\_  
REV. 2: \_\_\_\_\_  
REV. 3: \_\_\_\_\_  
REV. 4: \_\_\_\_\_  
REV. 5: \_\_\_\_\_  
REV. 6: \_\_\_\_\_  
REV. 7: \_\_\_\_\_  
REV. 8: \_\_\_\_\_  
REV. 9: \_\_\_\_\_  
REV. 10: \_\_\_\_\_

PROJECT: CHICK-FIL-A #2242  
THE COLLECTION FORSYTH  
LOCATION: CUMMINGS, GA  
DRAWN BY: SKK DATE: 02.20.24  
SCALE: NOT TO SCALE  
DRAWING NO.: U24-138-02  
SHEET NO.: H-1.2

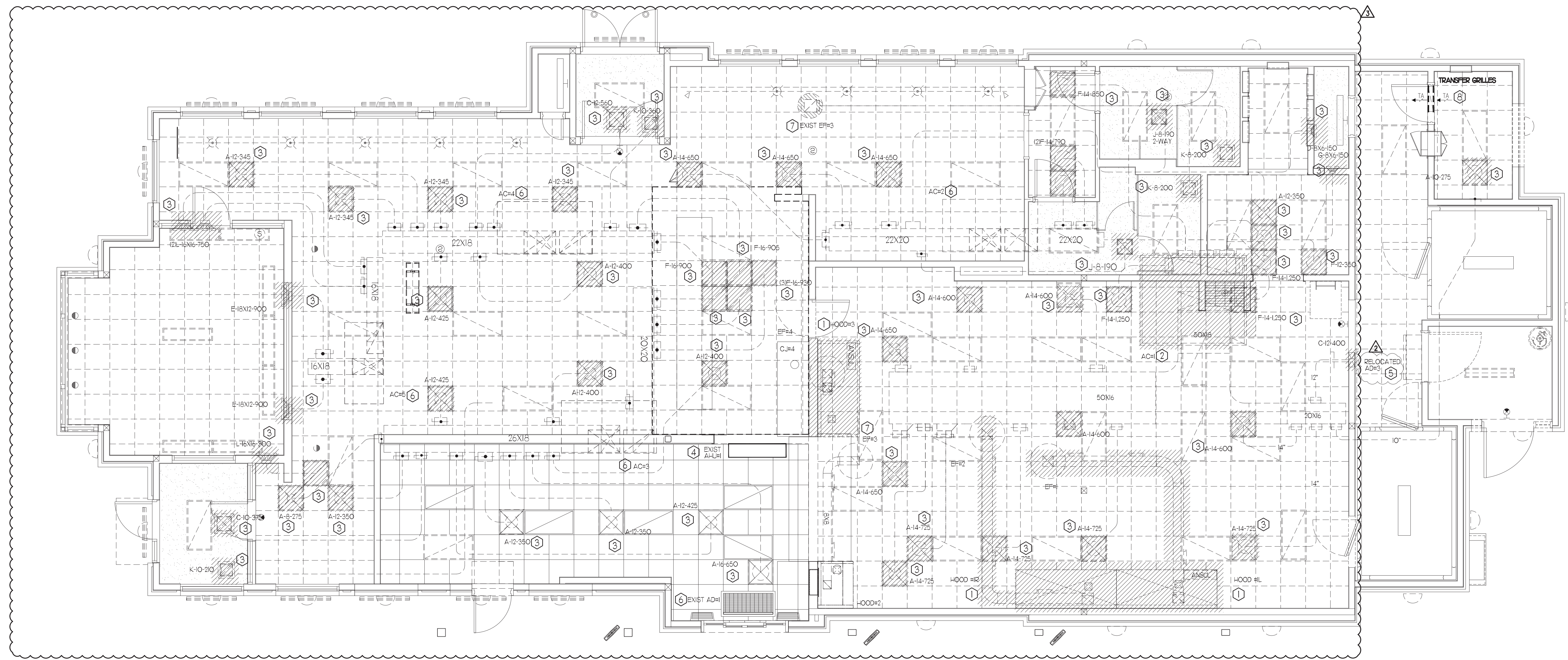


HALTON HOODS  
- ETL LISTED PER  
LATEST 710  
STANDARD  
- BUILT PER NFPA 96  
- NSF LISTED

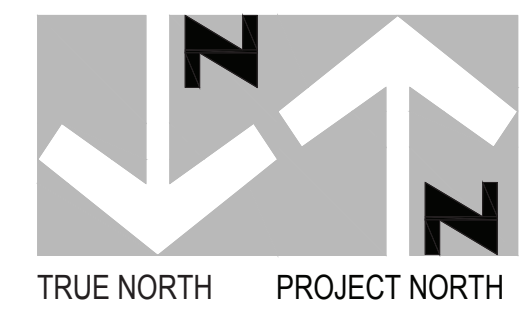
Table with columns: BUTY LEVEL, HODMAN OVERLAPS, PRIORITY, IN, SIDE, IN, NON, MAX, MIN, MAX, MIN, HEAD LENGTH. Includes NSF and UL logos.







**MECHANICAL DEMOLITION PLAN**  
1/4" = 1'-0"



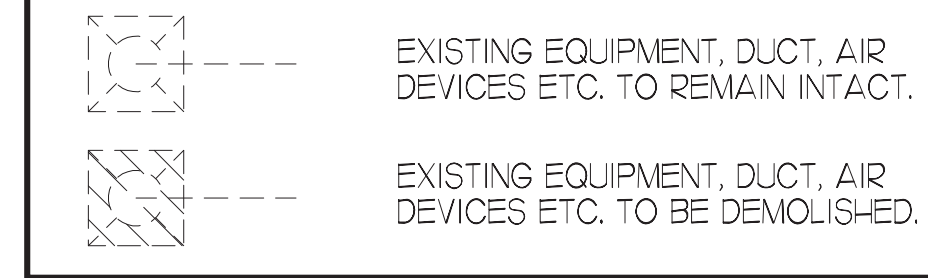
**DEMOLITION NOTES**

- CONTRACTOR IS RESPONSIBLE FOR OBTAINING ALL NECESSARY PERMITS AND PAYING ALL APPLICABLE FEES.
- DISPOSAL OF EQUIPMENT AND MATERIALS REQUIRED TO BE REMOVED SHALL BE THE RESPONSIBILITY OF THE CONTRACTOR PERFORMING THE WORK.
- DE-ENERGIZE ALL ELECTRICAL CIRCUITS RELATED TO EQUIPMENT THAT WILL BE MOVED OR REMOVE PRIOR TO STARTING WORK. DE-ENERGIZE CIRCUITS SHALL BE PROTECTED WITH LOCKING DEVICES USING APPROPRIATE WARNING LABELS.
- MECHANICAL CONTRACTOR SHALL BE RESPONSIBLE FOR PATCHING ROOF AFTER REMOVAL OF EXISTING MECHANICAL EQUIPMENT. SEE ARCHITECTURAL DRAWINGS FOR ROOF PATCHING REQUIREMENTS.
- EXCEPT WHERE NOTED, EXISTING REMOTE TEMPERATURE AND/OR HUMIDITY SENSORS TO REMAIN. IF DURING RENOVATION PURPOSES CONTROLS SHALL BE TAKEN DOWN. MECHANICAL CONTRACTOR SHALL BE RESPONSIBLE FOR REINSTALLING AND TO PROVIDE ANY ADDITIONAL WIRING NEEDED.
- MECHANICAL CONTRACTOR SHALL PERFORM ROUTINE MAINTENANCE ON EXISTING ROOFTOP UNITS AND MAKE ANY NECESSARY REFRIGERANT WITH NO LEAKS, NEW BELTS AND REPLACE AND FAN MOTORS NECESSARY.
- DISCONNECT GAS PIPING FROM EXISTING ROOFTOP UNIT(S) TO BE REPLACED. PLUMBING CONTRACTOR WILL REMOVE EXISTING GAS PIPING TO BE DEMOLISHED.
- CONTRACTOR SHALL INDICATE SALVAGE VALUE IN BID FOR ROOFTOP UNITS BEING REPLACED.

**DEMOLITION KEY NOTES**

- DEMOLISH EXISTING KITCHEN HOOD, ALL ASSOCIATED GREASE DUCT, AND EXHAUST FAN ON ROOF. EXISTING EXHAUST FAN TO BE REPLACED. TURN OVER EXISTING EXHAUST FAN TO OWNER. COVER ROOF OPENING WEATHER-TIGHT FOR RE-USE. REFER TO SHEET MJI & M3I FOR FURTHER INFORMATION.
- DEMOLISH EXISTING A/C UNIT AND, SUPPLY/RETURN AIR DROPS, ALL ASSOCIATED SUPPLY/RETURN DUCT (UNLESS OTHERWISE NOTED), AIR DEVICES AND TEMPERATURE SENSOR, CAP, SEAL AND COVER EXISTING ROOF CURB WEATHER-TIGHT. DISCONNECT GAS, ELECTRICAL, AND UNIT CONTROLS FROM EXISTING ROOFTOP UNIT. EXISTING ROOFTOP UNIT TO BE REPLACED WITH NEW AS SCHEDULED ON SHEET M3I. SEE SHEETS MJI AND M3I FOR FURTHER INFORMATION.
- DETACH, DEMOLISH AND REPLACE EXISTING AIR DEVICE SEE SHEET MJI FOR NEW AIR DEVICE LOCATIONS.
- EXISTING SPLIT SYSTEM AHU#1 IN DRIVE-THRU TO REMAIN.
- EXISTING AIR CURTAIN TO BE RELOCATED.
- EXISTING ELECTRIC COOLING/GAS HEATING ROOFTOP HVAC UNIT AND ASSOCIATED TEMPERATURE SENSOR TO REMAIN. REFER TO SHEET M3I FOR FURTHER INFORMATION.
- EXISTING EXHAUST FAN TO REMAIN.
- EXISTING TRANSFER AIR GRILLES TO REMAIN.
- EXISTING AIR DEVICE TO REMAIN.

**DEMOLITION LEGEND**



**LEGEND**

A-12-400	TYPE - NECK SIZE - CFM	EFH	EXHAUST FAN #I (TYP)
[Symbol]	SPIN-IN FITTING WITH MANUAL BALANCING DAMPER, WITHOUT SCOOP	[ACH]	AIR CONDITIONING UNIT #I (TYP)
[Symbol]	SPIN-IN HARD O FLEXIBLE O DIFFUSER	[Symbol]	RETURN/EXHAUST (TYP)
[Symbol]	EXISTING EQUIPMENT, DUCT, & AIR DEVICE	[Symbol]	SUPPLY DIFFUSER, SQ FACE (TYP)
[Symbol]	NEW EQUIPMENT, DUCT, & AIR DEVICE	[Symbol]	PLAN NOTE REFERENCE
[Symbol]	REMOTE TEMPERATURE SENSOR	[Symbol]	MANUAL VOLUME DAMPER
[Symbol]	HUMIDITY SENSOR	[Symbol]	DIRECTION OF THROW ON DIFFUSER
[Symbol]	STROBE AUDIO/VISUAL ALARM-ANNUNCIATOR	[Symbol]	CO2 SENSOR
[Symbol]	DUCT SIZE (REVERSE FOR ELEVATION VIEWS)	[Symbol]	PULL STATION
[Symbol]	1ST NUMBER - HORIZONTAL DIMENSION	[Symbol]	CONTROL PANEL
[Symbol]	2ND NUMBER - VERTICAL DIMENSION	[Symbol]	SMOKE DETECTOR
[Symbol]	POINT OF DISCONNECTION		
[Symbol]	POINT OF CONNECTION		
[Symbol]	INDICATES 2-WAY DIFFUSER. INDICATES BLANKED OFF SIDE		

**FIELD VERIFY ALL CONDITIONS**

NOTE: AS NOTED IN THE SPECIFICATIONS, ALL WIRING LAYOUTS, PIPING LAYOUTS AND DUCT LAYOUTS ARE SCHEMATIC. EXACT LOCATIONS SHALL BE DETERMINED BY THE CONTRACTOR AND STRUCTURE OF THE BUILDING AND SHALL BE VERIFIED AND COORDINATED IN THE FIELD. EACH TRADE CONTRACTOR SHALL VERIFY WITH THE GENERAL CONTRACTOR THAT HE HAS THOROUGHLY REVIEWED AND COORDINATED ALL LOCATIONS AND ROUTINGS WITH ALL OTHER TRADES PRIOR TO FABRICATION OF CONDUITS, DUCTS, OR PIPING, AND START OF INSTALLATION OF SAME (INCLUDING SPRINKLER PIPING WHEN PRESENT ON JOB). ANY INSTALLATION OR CONSTRUCTION CONFLICTS WHICH OCCUR IN THE FIELD SHALL BE RESOLVED BY THE TRADE CONTRACTOR TO THE SATISFACTION OF THE OWNER AND ARCHITECT AND AT NO EXPENSE TO THE OWNER, ARCHITECT AND/OR GENERAL CONTRACTOR.

THE CONTRACTOR SHALL CONTACT THE ARCHITECT, ENGINEER OR OWNER PRIOR TO BIDDING FOR INTERPRETATIONS AND CLARIFICATIONS OF THE DESIGN AND INCLUDE IN HIS BID ALL COSTS TO MEET THE DESIGN INTENT. CLARIFICATIONS MADE BY THE ARCHITECT, ENGINEER OR OWNER AFTER BIDDING WILL BE FINAL AND SHALL BE IMPLEMENTED AT CONTRACTORS COST.

BIDDING CONTRACTORS SHALL HAVE A WORKING KNOWLEDGE OF LOCAL CODES AND ORDINANCES AND SHALL INCLUDE IN THEIR BIDS THE COSTS FOR ALL WORK INSTALLED IN STRICT ACCORDANCE WITH GOVERNING CODES. THE PLANS AND SPECIFICATIONS NOT WITHSTANDING, THE CONTRACTOR SHALL ALERT ARCHITECT, ENGINEER OR OWNER OF ANY APPARENT DISCREPANCIES BETWEEN GOVERNING CODES AND DESIGN INTENT.



**Chick-fil-A**  
Chick-fil-A  
5200 Buffington Road  
Atlanta, Georgia  
30349-2998

**INTERPLAN**  
INTERPLAN LLC  
AR99238  
CA 8660  
ARCHITECTURE  
ENGINEERING  
PERMITTING

220 E. CENTRAL PKWY, STE 4000  
ALAMONTE SPRINGS, FL 32701  
407.645.5038

SEAL:



**CHICK-FIL-A**  
COLLECTION AT FORSYTH  
430 PEACHTREE PKWY  
CUMMING, GA 30041

**FSR# 02242**

BUILDING TYPE / SIZE: 506 C-R  
RELEASE: 23.04  
PRINTED FOR: CONSTRUCTION

REVISION SCHEDULE

NO.	DATE	DESCRIPTION
02	04/23/24	FSR REVIEW COMMENTS
03	04/23/24	FSR SCOPING UPDATES

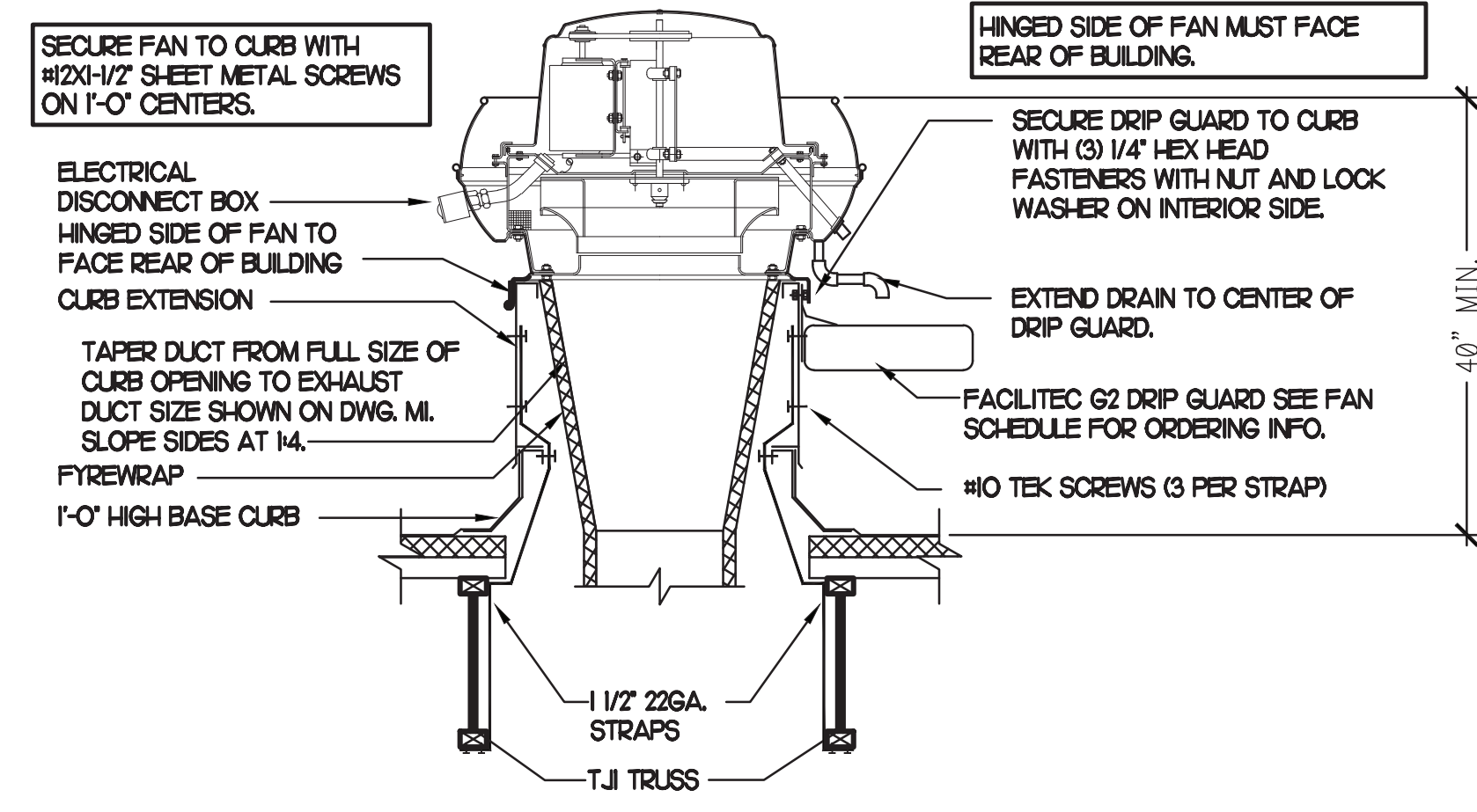
CONSULTANT PROJECT # 2022-0669  
DATE February 2024  
DRAWN BY SE  
CHECKED BY DAK  
Information contained on this drawing and in all digital files produced for above named project may not be reproduced in any manner without express written or verbal consent from the project representation.

Mechanical Demo Plan  
SHEET NUMBER  
**M1.0**





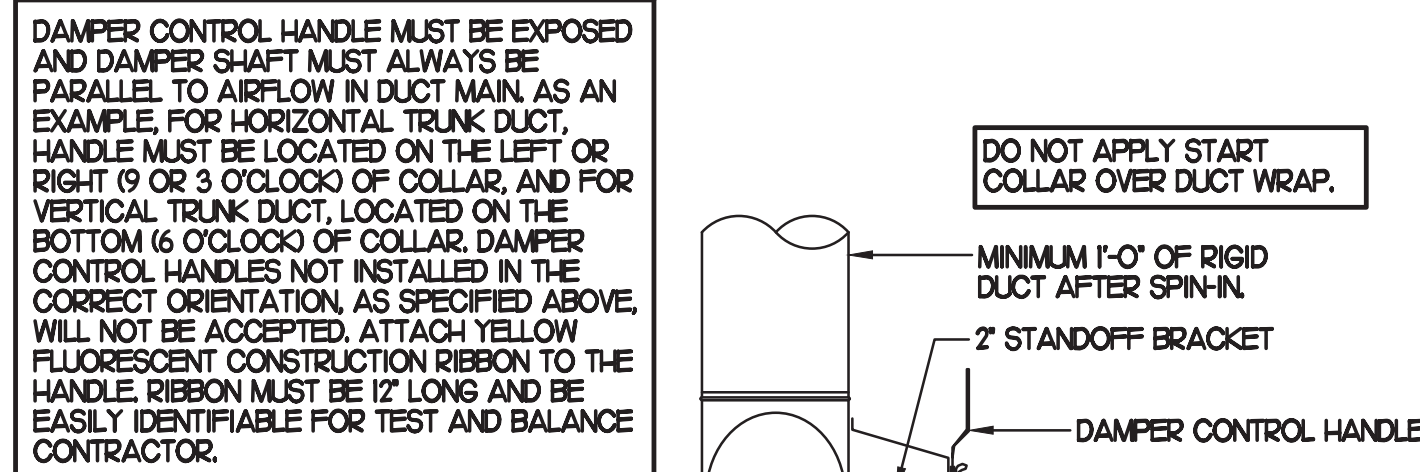




### 1 KITCHEN HOOD EXHAUST FAN

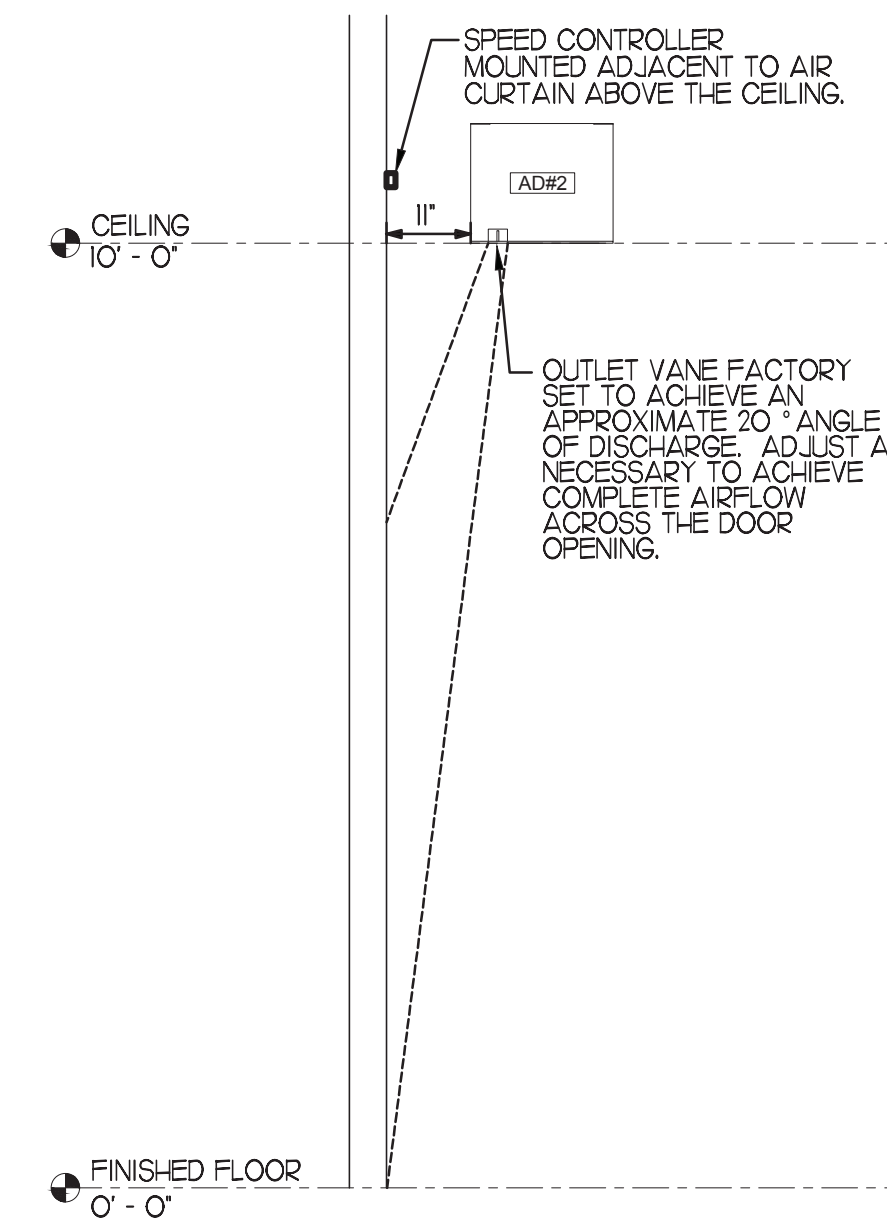
NO SCALE

CHICK-FIL-A HAS A NATIONAL ACCOUNT WITH TOM BARRON COMPANY FOR THE ROYAL METAL PRODUCTS START COLLARS FOR BOTH WITH AND WITHOUT A MANUAL BALANCING DAMPER. THE MECHANICAL CONTRACTOR IS REQUIRED TO PURCHASE THE ROYAL METAL PRODUCTS START COLLARS DIRECTLY FROM TOM BARRON COMPANY. CONTACT MC SCOTT GEORGE AT 404-351-1010 FOR PRICING AND AVAILABILITY. ROYAL METAL PRODUCTS START COLLARS NOT PURCHASED THRU TOM BARRON COMPANY WILL NOT BE ACCEPTED.



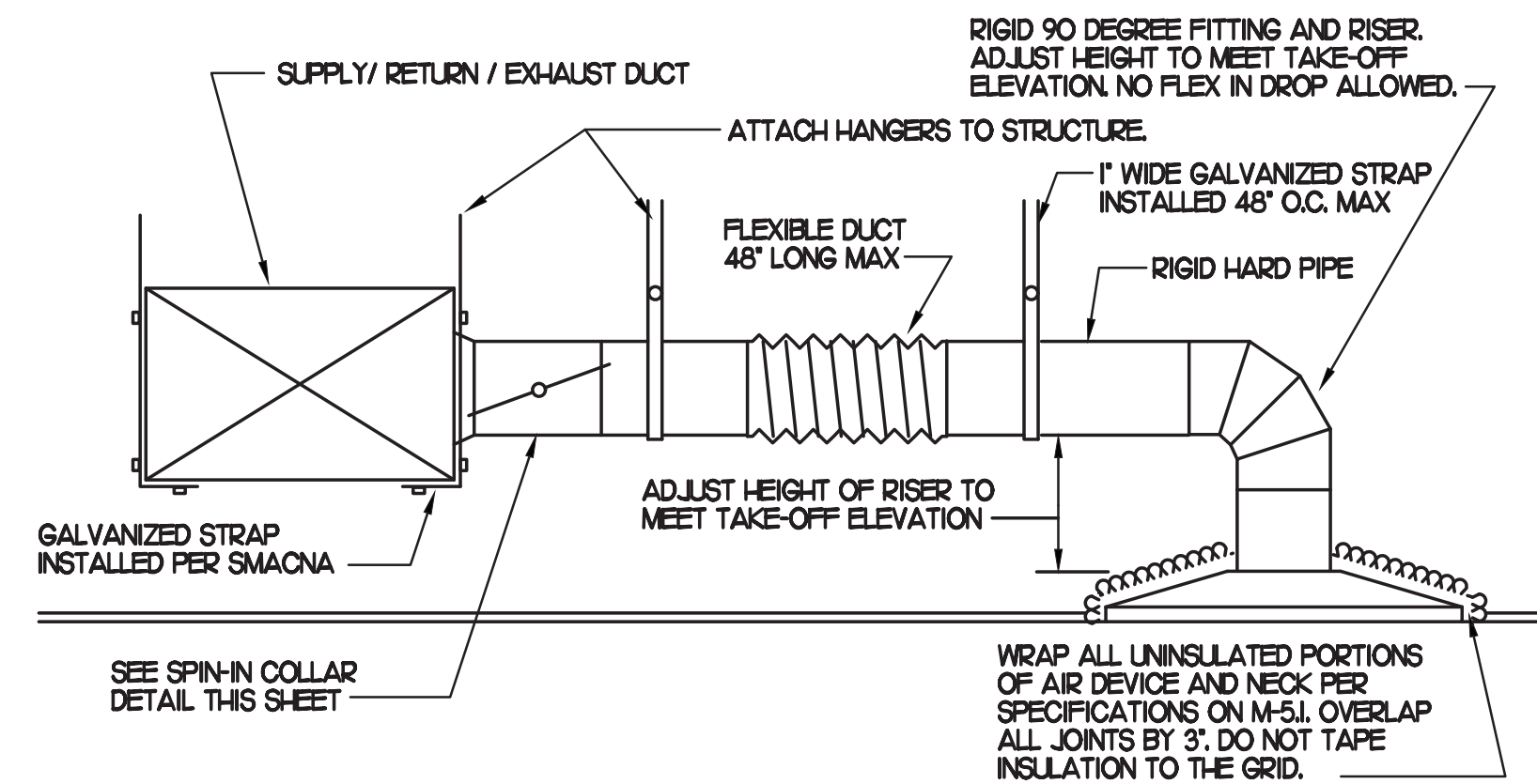
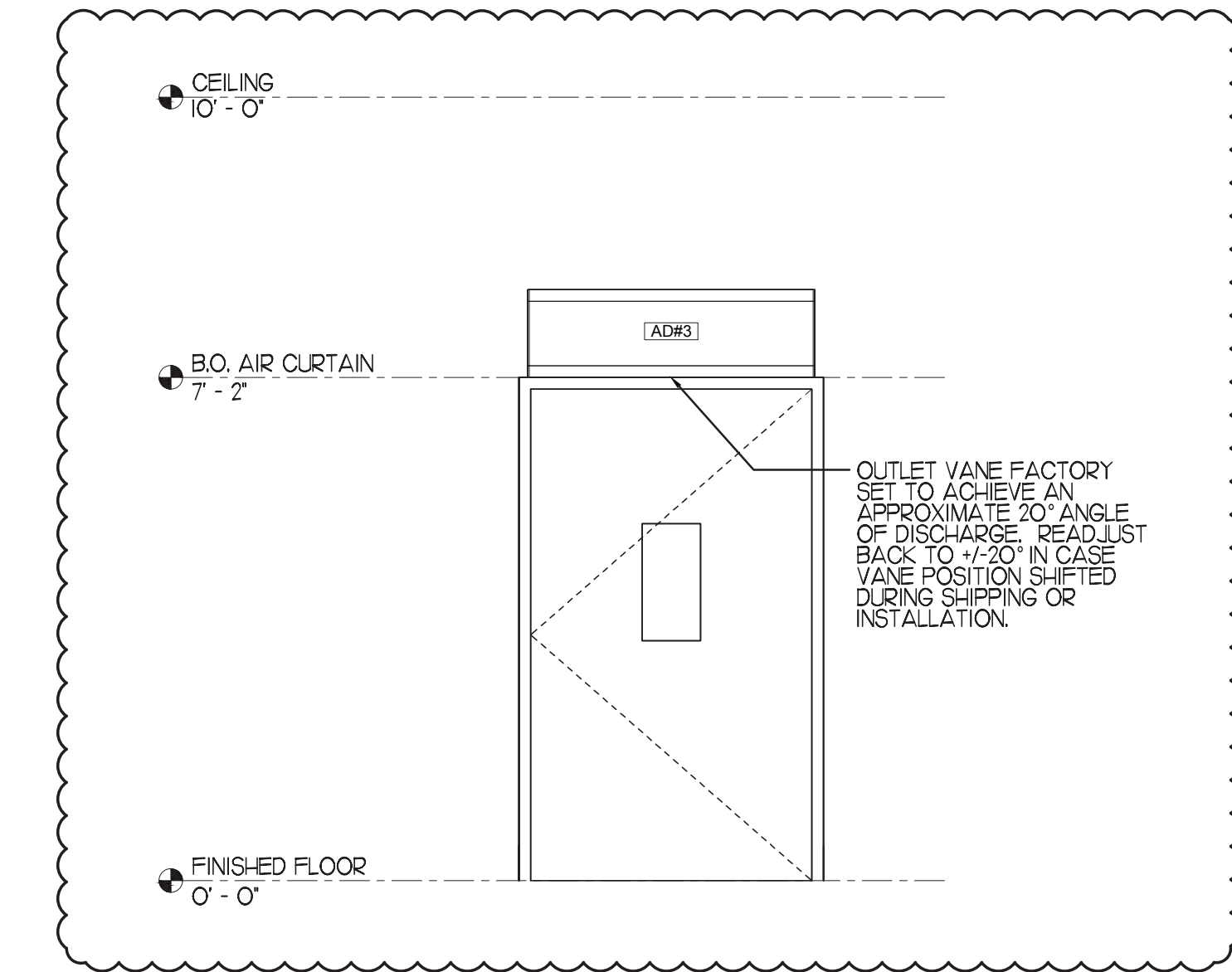
### 2 START COLLAR

NO SCALE



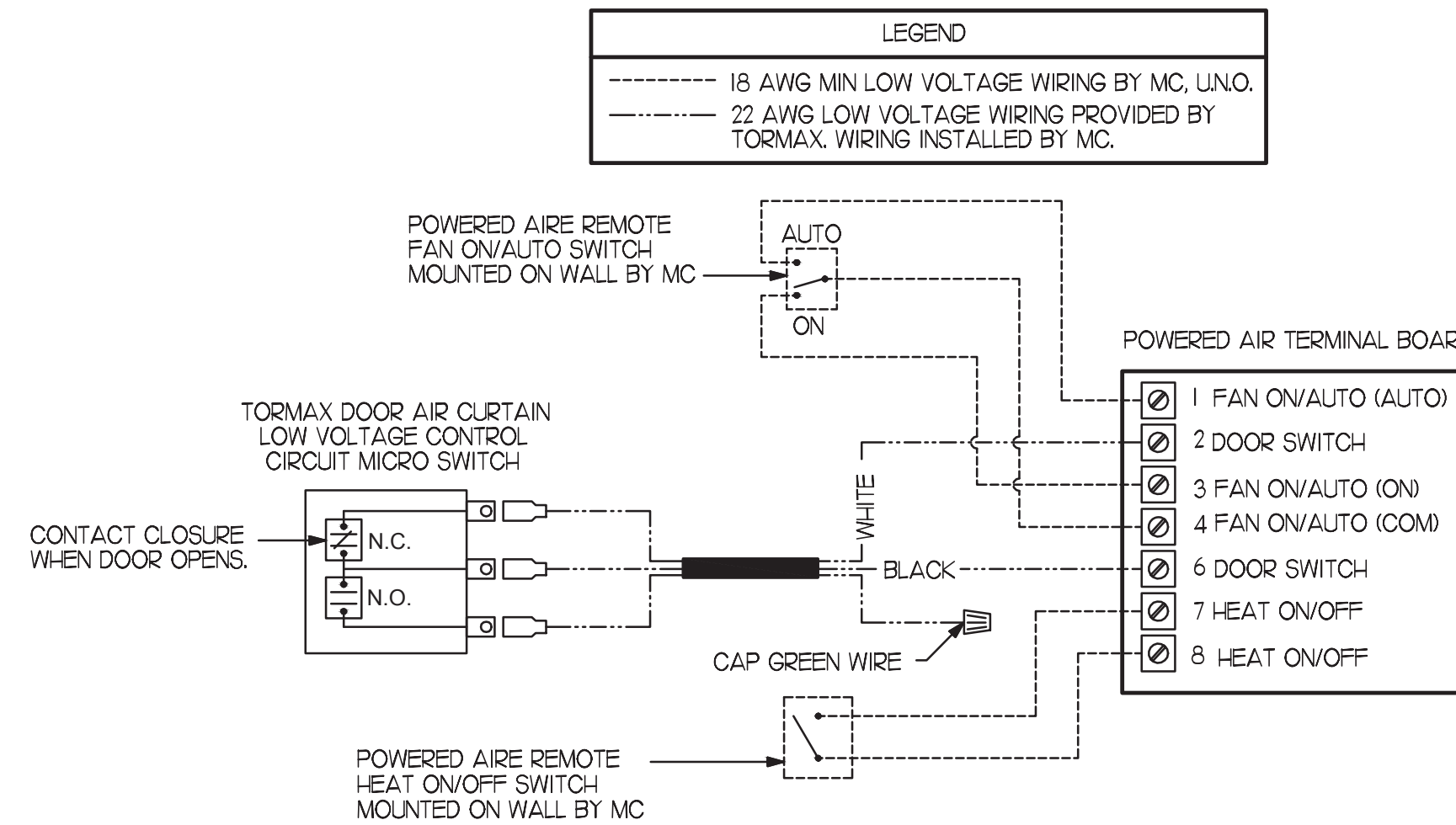
### 3 AIR CURTAIN MOUNTING

NO SCALE



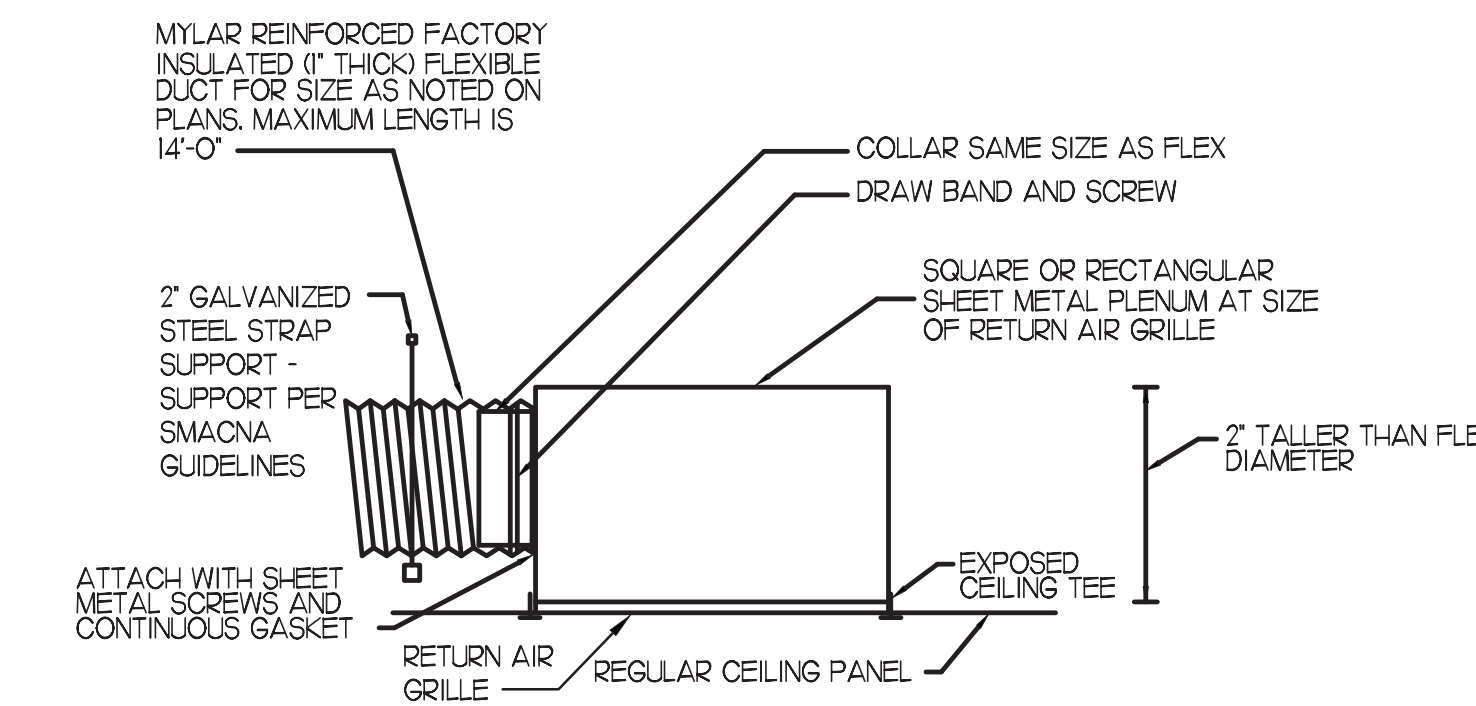
### 5 SAG/RAG/GRILLE TAKE-OFF

NO SCALE



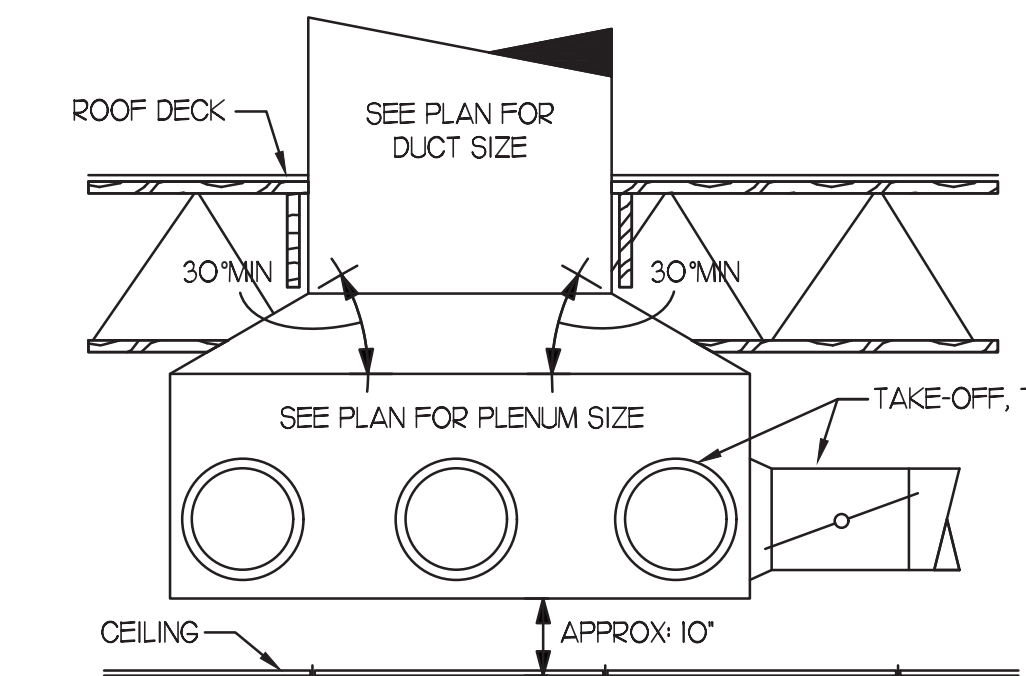
### 6 AIR CURTAIN WIRING DIAGRAM

NO SCALE



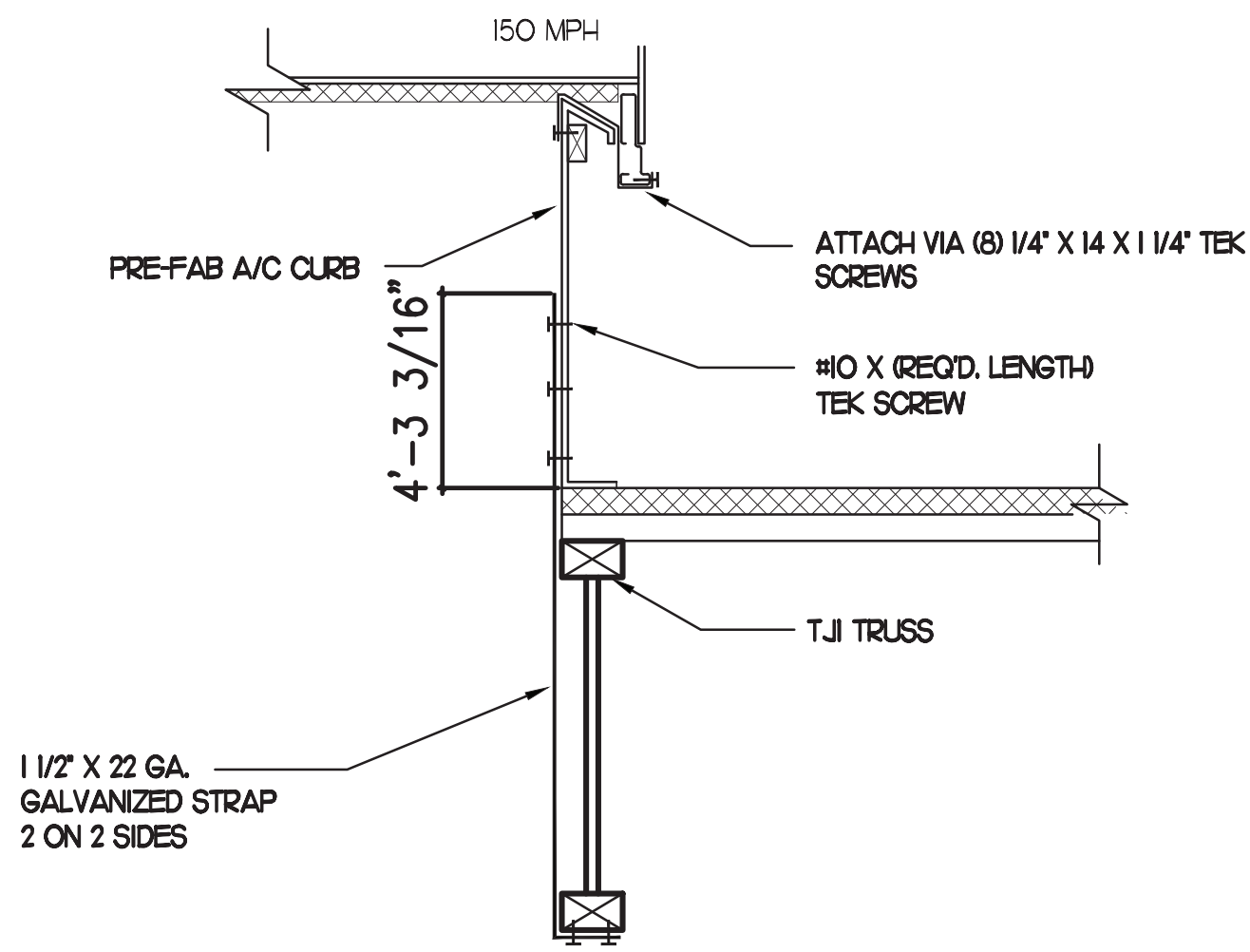
### 4 TRANSFER AIR GRILLE DETAIL

NO SCALE



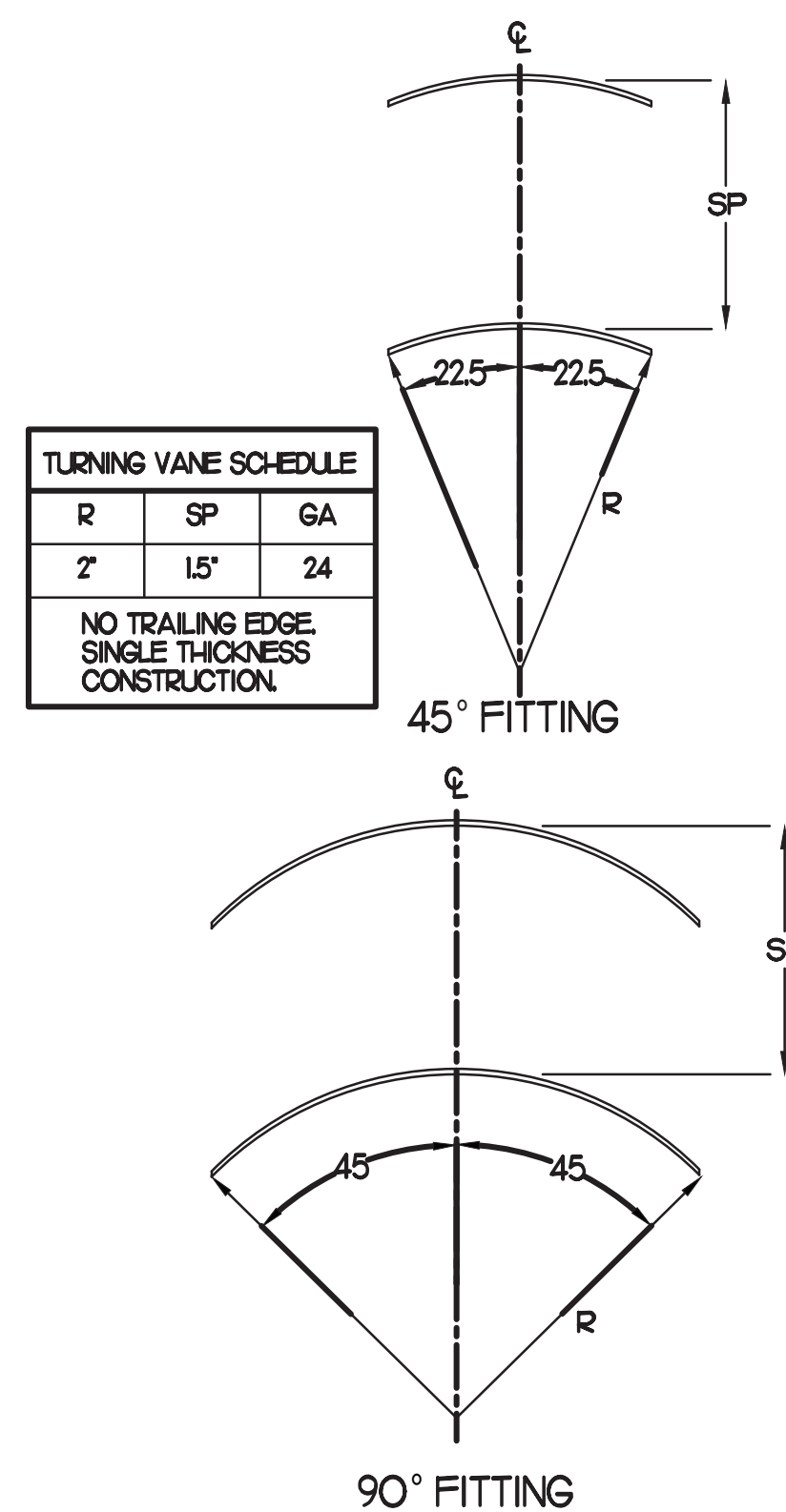
### 7 RETURN DROP GEOMETRY

NO SCALE



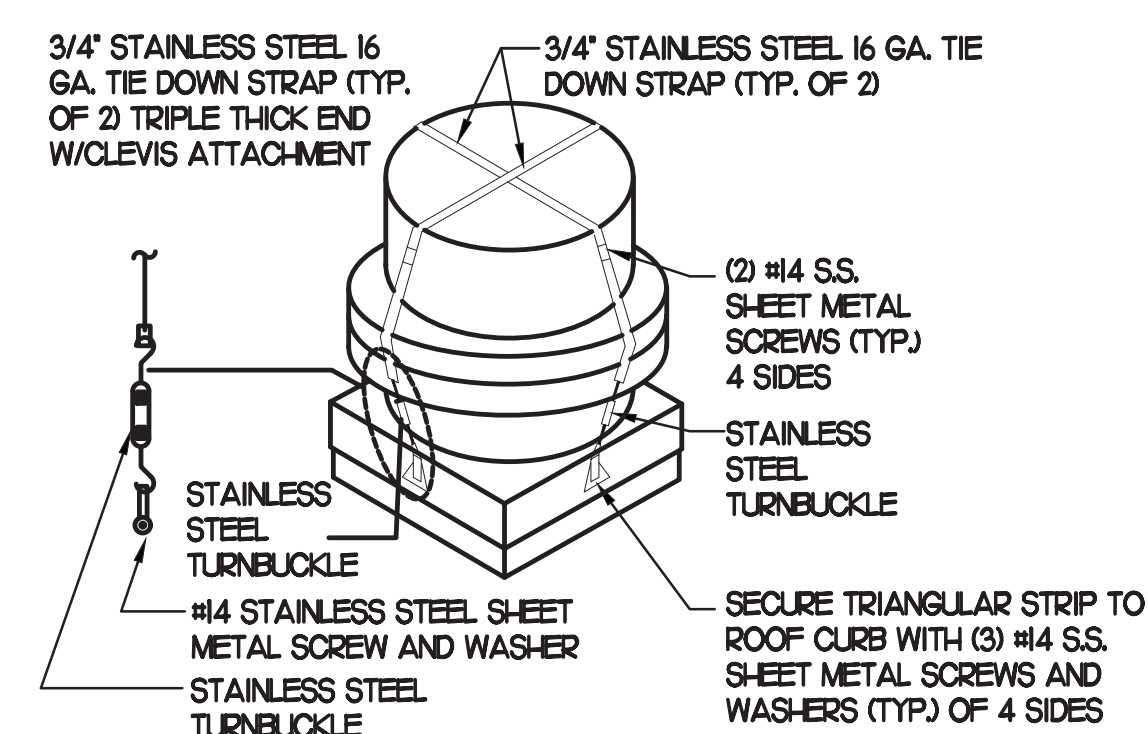
### 8 RTU TIE-DOWNS DETAIL

NO SCALE



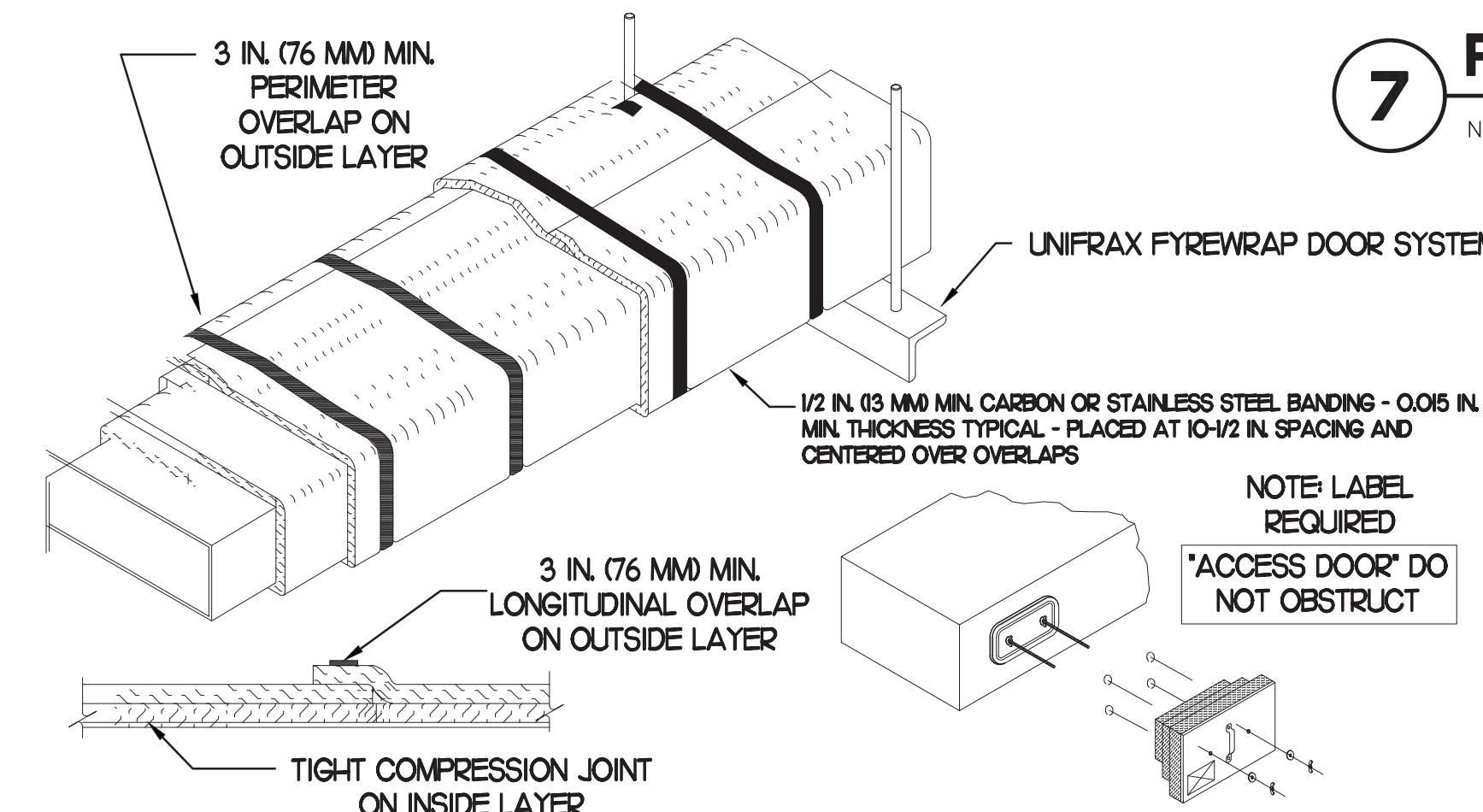
### 10 TURNING VANES

NO SCALE



### 9 FAN SECURING DETAIL

NO SCALE



### 11 GREASE EXHAUST DUCT PROTECTION TO COMBUSTIBLES DETAIL

NO SCALE

- UNIFRAX FIREWRAP ELITE 1.5 DUCT INSULATION HAS BEEN TESTED IN ACCORDANCE WITH ASTM E 2336 TO PROVIDE ZERO CLEARANCE TO COMBUSTIBLES AND MEETS THE REQUIREMENTS FOR ONE OR TWO HOUR ENCLOSURES. THROUGH PENETRATIONS FIRESTOP SYSTEMS ARE TESTED IN ACCORDANCE WITH EITHER ASTM E 814 OR UL 1479. ICC-ES APPROVAL PER REPORT ESR 2213 OR ESR 2832. UNDERWRITER'S LABORATORIES (UL) LISTINGS SHOW COMPLIANCE TO UL 1479 FOR THROUGH PENETRATION FIRESTOP SYSTEMS.
- COMPLIANT TO THE FOLLOWING CODES:
  - BUILDING CODE: INTERNATIONAL BUILDING CODE, WITH GEORGIA AMENDMENTS EDITION 2018.
  - PLUMBING CODE: INTERNATIONAL PLUMBING CODE, WITH GEORGIA AMENDMENTS EDITION 2018.
  - MECHANICAL CODE: INTERNATIONAL MECHANICAL CODE, WITH GEORGIA AMENDMENTS EDITION 2018.
  - FUEL GAS CODE: INTERNATIONAL FUEL GAS CODE, WITH GEORGIA AMENDMENTS EDITION 2018.
  - ACCESSIBILITY CODE: GEORGIA ACCESSIBILITY CODE EDITION 2012.
- INSULATION APPLIED IN TWO LAYERS WITH TIGHT COMPRESSION JOINT ON INSIDE LAYER AND 3 INCH MINIMUM OVERLAPS ON BOTH PERIMETER AND LONGITUDINAL OVERLAPS ON OUTSIDE LAYER.
- GREASE EXHAUST DUCT RUNS FROM THE HOOD EXHAUST CONNECTION UP TO THE EXHAUST FAN ON THE ROOF WITH MINIMAL TURNS OR BENDS AND MAINTAINING MINIMUM 1/4 UNIT VERTICAL RISE PER 12 UNITS HORIZONTAL RUN. NFPA 96 COMPLIANT ACCESS DOORS LOCATED AS REQUIRED BY CODE.
- UNIFRAX FIREWRAP ELITE 1.5 ACCESS DOORS AS SPECIFIED IN ICC-ES BUILDING CODE REPORTS ESR 2213 OR ESR 2832.
- ROOF MOUNTED EXHAUST FAN IS MOUNTED ON A HINGED BASE WHICH ALLOWS ACCESS TO THE DUCT FROM THE ROOF.
- SUPPORT HANGER SYSTEMS DO NOT NEED TO BE WRAPPED PROVIDED THE HANGER RODS ARE AT LEAST A MINIMUM OF 3/8 IN. DIAMETER. USE MINIMUM 2 X 2 X 1/8 IN. STEEL ANGLE OR SMAONA EQUIVALENT SUPPORT SYSTEM.
- UNIFRAX FIREWRAP ELITE 1.5 DUCT ENCLOSURE SYSTEM SHALL BE INSTALLED IN ACCORDANCE WITH MANUFACTURER'S INSTRUCTIONS.
- UNIFRAX FIREWRAP ELITE 1.5 DUCT WRAP SHALL BE INSTALLED ON THE DUCT FROM THE HOOD CONNECTION TO THE CONNECTION TO THE FAN.



**Chick-fil-A**  
 5200 Buffington Road  
 Atlanta, Georgia  
 30349-2998

**INTERPLAN**  
 INTERPLAN LLC  
 AR99238  
 CA 8660  
 ARCHITECTURE  
 ENGINEERING  
 PERMITTING

220 E. CENTRAL PKWY, STE 4000  
 ALAMONTE SPRINGS, FL 32701  
 407.645.5038

SEAL:



**CHICK-FIL-A**  
 COLLECTION AT FORSYTH  
 430 PEACHTREE PKWY  
 CUMMING, GA 30041

### FSR# 02242

BUILDING TYPE / SIZE: 508 C-R  
 RELEASE: 23.04

PRINTED FOR: CONSTRUCTION

REVISION SCHEDULE

NO.	DATE	DESCRIPTION
02	04/03/24	PLAN REVIEW COMMENTS

CONSULTANT PROJECT # 2022\_0669  
 DATE February 2024  
 DRAWN BY SE  
 CHECKED BY DAK

Information contained on this drawing and in all digital files produced for above named project may not be reproduced in any manner without express written or verbal consent from authorized project representatives.

SHEET MECHANICAL DETAILS

SHEET NUMBER

**M4.1**