

Report By:

National TAB
1329 E. KEMPER ROAD
SUITE 4210
CINCINNATI, OH 45246



Report: TAB Report
Function: Test, Adjust, & Balance
Date: 12/05/2025
Completed By: National TAB

PROJECT

12-01-25 APPLEBEES PEMBROKE PINES, FL

10135 Pines Blvd

PEMBROKE PINES, FL 33026

Client

Flynn Restaurant Group
6200 Oak Tree Boulevard
Suite 250
Independence, OH 44131

National TAB

Project: 12-01-25 APPLEBEES PEMBROKE PINES, FL

Table Of Contents

Section	Page #
Summary	3
Remarks	4
Balance Schedule	17
Checklists	18
AHU/RTU	37
FAN - Supply	52
FAN - Exhaust	54
Kitchen Hood Type I	64
Kitchen Hood Type II	68
As-Built Sketch	70



National TAB

Project: 12-01-25 APPLEBEES PEMBROKE PINES, FL
Function: Test, Adjust, & Balance

Project Summary

The purpose of this project was to evaluate the condition and performance of all existing HVAC equipment on site. Total airflow was measured for all equipment using a combination of flow hood, velocity grid, and duct traverse readings, with appropriate correction factors where necessary. Other data such as volt/amp draw and static pressures are also recorded. Finally, the overall building pressure was measured with all equipment running at high speed.

Also included in this report are a detailed list of critical issues with equipment and ductwork; a sketch of supply diffuser locations; and pictures of all equipment, breaker panels, temperature sensors, and overall rooftop layout.

Issue List

- EF 1 Grease Drain
- EF-4 Not Functional
- EF-5 Not Functional
- EFs 1, 2 - Loose Belts
- Kitchen Ductwork - Water Damage
- MUA Pulleys Rusted
- RTU 1 - Loose Insulation
- RTU 5 Blower Dirty
- RTU Condensate Drains
- RTU Condenser Coils
- RTU Filters Dirty
- RTUs - OA Filters



12-01-25 APPLEBEES PEMBROKE PINES, FL

Project Issue Information

Issue Name : EF 1 Grease Drain
Description : EF-1 is missing a grease drain, grease has accumulated on the roof near the fan and has made the surrounding area slippery.
Created By : National TAB **Assigned To :** National TAB - Dan Hertenstein
Status : Open
Priority : High **Asset Tag :**
Originated Date : 12/05/2025 - Mark Johnson - National TAB

Project Issue File Details



12/05/2025



12-01-25 APPLEBEES PEMBROKE PINES, FL

Project Issue Information

Issue Name : EF-4 Not Functional
Description : EF-4 (water room) is not powered.
Created By : National TAB **Assigned To :** National TAB - Dan Hertenstein
Status : Open
Priority : **Urgent** **Asset Tag :**
Originated Date : 12/05/2025 - Mark Johnson - National TAB

Project Issue File Details



12/05/2025



12/05/2025

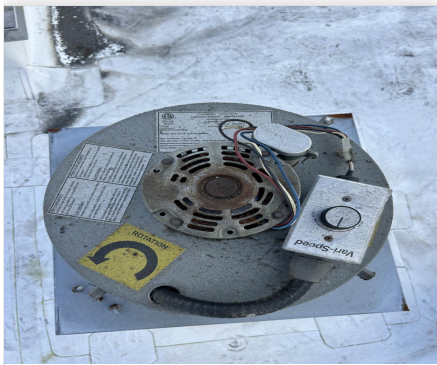


12-01-25 APPLEBEES PEMBROKE PINES, FL

Project Issue Information

Issue Name : EF-5 Not Functional
Description : EF-5 (restrooms) is not running. Fan blades are clogged with debris and the motor is humming loudly but not spinning.
Created By : National TAB **Assigned To :** National TAB - Dan Hertenstein
Status : Open
Priority : Urgent **Asset Tag :**
Originated Date : 12/05/2025 - Mark Johnson - National TAB

Project Issue File Details



12/05/2025



12/05/2025



12-01-25 APPLEBEES PEMBROKE PINES, FL

Project Issue Information

Issue Name : EFs 1, 2 - Loose Belts
Description : Belts are slightly loose on EFs 1 and 2. May need adjusted or replaced soon.
Created By : National TAB **Assigned To :** National TAB - Dan Hertenstein
Status : Open
Priority : Medium **Asset Tag :**
Originated Date : 12/05/2025 - Mark Johnson - National TAB

Project Issue File Details



12/05/2025



12-01-25 APPLEBEES PEMBROKE PINES, FL

Project Issue Information

Issue Name : Kitchen Ductwork - Water Damage
Description : Much of the ductwork in the kitchen has wet and sagging insulation. Recommend service.
Created By : National TAB **Assigned To :** National TAB - Dan Hertenstein
Status : Open
Priority : Urgent **Asset Tag :**
Originated Date : 12/05/2025 - Mark Johnson - National TAB

Project Issue File Details





12-01-25 APPLEBEES PEMBROKE PINES, FL

Project Issue Information

Issue Name : MUA Pulleys Rusted
Description : MUA pulleys are rusted and worn.
Created By : National TAB **Assigned To :** National TAB - Dan Hertenstein
Status : Open
Priority : **Medium** **Asset Tag :**
Originated Date : 12/05/2025 - Mark Johnson - National TAB

Project Issue File Details



12/05/2025



12-01-25 APPLEBEES PEMBROKE PINES, FL

Project Issue Information

Issue Name : RTU 1 - Loose Insulation
Description : There is loose insulation in the blower compartment of RTU 1. Insulation is hanging low and at risk of being caught in the pulleys. Recommend repair.
Created By : National TAB **Assigned To :** National TAB - Dan Hertenstein
Status : Open
Priority : High **Asset Tag :**
Originated Date : 12/05/2025 - Mark Johnson - National TAB

Project Issue File Details



12/05/2025



12-01-25 APPLEBEES PEMBROKE PINES, FL

Project Issue Information

Issue Name : RTU 5 Blower Dirty
Description : RTU 5's blower wheel is getting dirty and may need cleaned soon.
Created By : National TAB **Assigned To :** National TAB - Dan Hertenstein
Status : Open
Priority : Medium **Asset Tag :**
Originated Date : 12/05/2025 - Mark Johnson - National TAB

Project Issue File Details



12/05/2025



12-01-25 APPLEBEES PEMBROKE PINES, FL

Project Issue Information

Issue Name : RTU Condensate Drains
Description : RTU condensate drains are broken, water is pooling around each unit as a result.
Created By : National TAB **Assigned To :** National TAB - Dan Hertenstein
Status : Open
Priority : High **Asset Tag :**
Originated Date : 12/05/2025 - Mark Johnson - National TAB

Project Issue File Details



12/05/2025

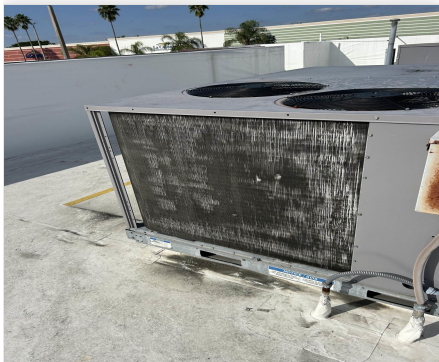


12-01-25 APPLEBEES PEMBROKE PINES, FL

Project Issue Information

Issue Name : RTU Condenser Coils
Description : There is some fin damage on all RTU condenser coils.
Created By : National TAB **Assigned To :** National TAB - Dan Hertenstein
Status : Open
Priority : Medium **Asset Tag :**
Originated Date : 12/05/2025 - Mark Johnson - National TAB

Project Issue File Details



12/05/2025



12/05/2025



12/05/2025



12-01-25 APPLEBEES PEMBROKE PINES, FL

Project Issue Information

Issue Name : RTU Filters Dirty
Description : All RTU final filters are dirty and need replaced soon.
Created By : National TAB **Assigned To :** National TAB - Dan Hertenstein
Status : Open
Priority : High **Asset Tag :**
Originated Date : 12/05/2025 - Mark Johnson - National TAB

Project Issue File Details





12-01-25 APPLEBEES PEMBROKE PINES, FL

Project Issue Information

Issue Name : RTUs - OA Filters
Description : Outside air intake filters are dirty or damaged on all RTUs. Recommend repair/replacement.
Created By : National TAB **Assigned To :** National TAB - Dan Hertenstein
Status : Open
Priority : Urgent **Asset Tag :**
Originated Date : 12/05/2025 - Mark Johnson - National TAB

Project Issue File Details



12/05/2025



12/05/2025



12/05/2025

AIR BALANCE SCHEDULE

UNIT	AREA SERVED	HVAC SUPPLY		HVAC RETURN		HVAC OUTDOOR		OA %		HOOD MAKE-UP		HOOD EXHAUST		GENERAL EXH.	
		DESIGN	ACTUAL	DESIGN	ACTUAL	DESIGN	ACTUAL	DESIGN	ACTUAL	DESIGN	ACTUAL	DESIGN	ACTUAL	DESIGN	ACTUAL
RTU-1	FRONT DINING		2998		2902		96		3.2%						
RTU-2	BAR / MAIN DINING		2729		1737		992		36.4%						
RTU-3	SIDE DINING / RESTROOMS		2898		2898		0		0.0%						
RTU-4	KITCHEN		4030		3192		838		20.8%						
RTU-5	BOH		1892		1892		0		0.0%						
MUA-1	HOOD 1									4174					
EF-1	HOOD 1-LEFT											4269			
EF-2	HOOD 1-RIGHT											2778			
EF-3	HOOD 2											1615			
EF-4	WATER ROOM														0
EF-5	RESTROOMS														0
TOTALS			14547		12621		1926				4174		8662		0

NET BUILDING AIRFLOW CALCULATION

TOTALS	DESIGN	ACTUAL
TOTAL OA	N/A	6100
TOTAL EXHAUST	N/A	8662
NET AIRFLOW	N/A	-2562

DOOR TESTED	BUILDING PRESSURE MEASUREMENTS (IN. H2O)
FRONT	-0.0146
SIDE	-0.0132
REAR	-0.0113
AVERAGE	-0.013

FINAL CHECKS

- ACTUAL NET AIRFLOW COINCIDES WITH DESIGN: ✗

- MEASURED PRESSURES COINCIDES WITH ACTUAL NET AIRFLOW: ✓

- PRESSURE FALLS WITHIN IMC TOLERANCE OF +/-0.02" W.C. ✓

NOTES:

CheckList List

- 01: GENERAL PICTURE
- 02: GENERAL INSPECTION
- 03: RTU INSPECTION
- 04: EF INSPECTION
- 05: MUA INSPECTION
- 06: HOOD INSPECTION



12-01-25 APPLEBEES PEMBROKE PINES, FL

CheckList Information

Name : 01: GENERAL PICTURE **Status :** Completed
Assigned Organization : National TAB **Asset :**
Requesting Organization : National TAB
Created Date : 11/25/2025 - Trinity Dodds - National TAB
Completed Date : 12/04/2025 - Mark Johnson - National TAB

CheckList Item Details

Take the following pictures

Rooftop from multiple angles

Comment:



12/04/2025



12/04/2025

Exterior of the building from multiple angles

Comment:



12/04/2025



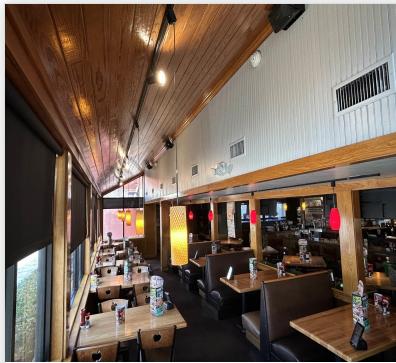
12/04/2025

Dining area so that diffusers are visible

Comment:



12/02/2025



12/02/2025



12/02/2025

Kitchen areas so that diffusers are visible

Comment:



12/02/2025



12/02/2025

Thermostats

Comment:



12/02/2025

Temp/humidity sensors zoomed out

Comment:



12/02/2025



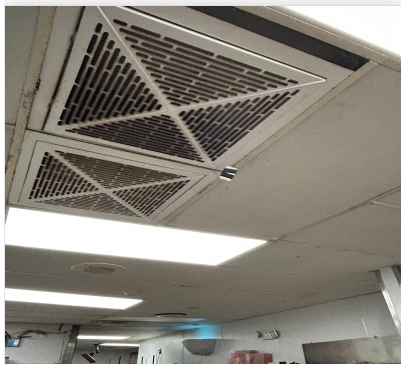
12/02/2025



12/02/2025

Temp/humidity sensors zoomed out (continued)

Comment:



12/02/2025

Breaker panels with doors open

Comment:



12/02/2025



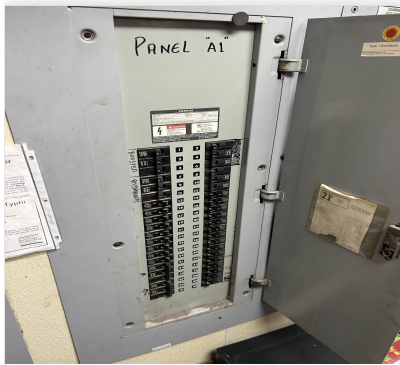
12/02/2025



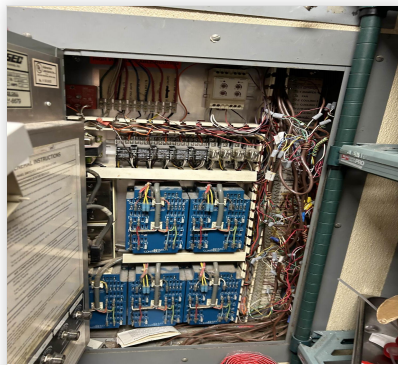
12/02/2025

Breaker panels with doors open (continued)

Comment:



12/02/2025



12/02/2025



12/02/2025

Any additional areas of concern (stained tiles, rusted diffusers, etc)

Comment:

Some dirty tiles and diffusers around kitchen



12/04/2025



12-01-25 APPLEBEES PEMBROKE PINES, FL

CheckList Information

Name : 02: GENERAL INSPECTION **Status :** Completed
Assigned Organization : National TAB **Asset :**
Requesting Organization : National TAB
Created Date : 11/25/2025 - Trinity Dodds - National TAB
Completed Date : 12/05/2025 - Mark Johnson - National TAB

CheckList Item Details

General Inspection

Interview manager to find out what HVAC and KVS related issues they have and any recurring complaints (temperature, humidity, smoke capture, building pressure, drafting, etc).

Comment:

Per manager: customers express that it's hot on the "greenhouse" side of the dining room (served by RTU 3). No comfort issues in the kitchen were reported.

With all fans running, measure the building pressure at all doors. Building pressure measurements:

Comment:

Front: -0.0146" // Side: -0.0132" // Back: -0.0113"

Are thermostats programmable and can they be programmed for a Fan On schedule? Pass

Comment:

Are all diffusers free of damage and rust? Pass

Comment:

Ductwork appears to be intact and has not come loose above ceiling? Pass

Comment:

Does all duct insulation above the ceiling appear to be intact? Fail

Comment:

Wet and sagging insulation throughout kitchen ductwork

Mark up drawing if provided with any changes to diffuser location. Otherwise, create a basic drawing showing walls, diffuser locations, diffuser numbers, and hood locations. Upload to files section of HUB

Pass

Comment:

Included in report



12-01-25 APPLEBEES PEMBROKE PINES, FL

CheckList Information

Name : 03: RTU INSPECTION **Status :** Completed

Assigned Organization : National TAB **Asset :**

Requesting Organization : National TAB

Created Date : 11/25/2025 - Trinity Dodds - National TAB

Completed Date : 12/04/2025 - Mark Johnson - National TAB

CheckList Item Details

RTU Inspection

Area served

Comment:

RTU 1: Front Dining RTU 2: Main Dining and Bar // RTU 3: Side Dining and Restrooms // RTU 4: Kitchen // RTU 5: BOH

Size of main supply drop

Comment:

RTU 1: 28"x14" // RTU 2: 30"x14" // RTU 3: 28"x14" // RTU 4: 28"x14" // RTU 5: 18"x14"

Size of main return drop

Comment:

RTU 1: 32"x14" // RTU 2: 34"x14" // RTU 3: 28"x14" // RTU 4: 28"x14" // RTU 5: 25"x12"

Look down both the supply drop and return drops from the RTU. Are ducts clean or do they require cleaning? And are they free of obstructions? Pass

Comment:

Take pictures looking down the drops Pass

Comment:

Included in assets

Evaporator coil is clean and in good condition Pass

Comment:

Condenser coil is clean and in good condition

Fail

Comment:

Some coil damage on all RTUs

Blower wheel is clean and in good condition

Fail

Comment:

RTU 5 wheel is dirty

Filters are clean

Fail

Comment:

All filters are dirty and need replaced

Belt tight and in good condition

Pass

Comment:

Is an economizer installed and does it respond to adjustment?

N/A

Comment:

Manual adjust only

Does the unit have dehumidification?

N/A

Comment:

No dehumidification

If the unit has dehumidification is the humidity sensor wired properly?

N/A

Comment:

Is the unit free of unusual noise and vibration?

Pass

Comment:

Feel around curb. Is there any noticeable air leakage while the unit is running?

Pass

Comment:

Cooling is functional

Pass

Comment:

Heating is functional

N/A

Comment:

Heating is wired but was not tested

Note any other damage or areas of concern:

Comment:

Loose insulation in blower compartment of RTU 1, in danger of getting caught on blower wheel.



12-01-25 APPLEBEES PEMBROKE PINES, FL

CheckList Information

Name : 04: EF INSPECTION **Status :** Completed

Assigned Organization : National TAB **Asset :**

Requesting Organization : National TAB

Created Date : 11/25/2025 - Trinity Dodds - National TAB

Completed Date : 12/05/2025 - Mark Johnson - National TAB

CheckList Item Details

EF Inspection:

Area served

Comment:

EF 1: HD 1L // EF 2: HD 1R // EF 3: HD 2 // EF 4: Water Room // EF 5: Restrooms

Measure length and width of curb.

Comment:

EF 1: 27"x27" // EF 2: 27"x27" // EF 3: 20"x20" // EF 4: 18"x18" // EF 5: 15"x15"

No unusual noise or vibration?

Fail

Comment:

EF 5 - Motor humming, no rotation

List any visual damage

Pass

Comment:

If direct drive fan, is the speed controller or VFD functional?

N/A

Comment:

If belt driven are the pulleys in good condition and not rusted?

Pass

Comment:

Is the belt tight?

Fail

Comment:

Belts loose - EF 1 and EF 2



12/04/2025

Pictures

Unit nameplate

Comment:



12/04/2025



12/04/2025



12/04/2025

Exterior of fan from multiple angles

Comment:



12/04/2025



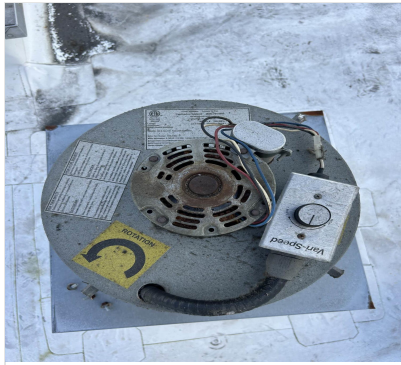
12/04/2025



12/04/2025

Inside of motor compartment

Comment:



12/04/2025



12/04/2025



12/04/2025



12-01-25 APPLEBEES PEMBROKE PINES, FL

CheckList Information

Name : 05: MUA INSPECTION **Status :** Completed

Assigned Organization : National TAB **Asset :**

Requesting Organization : National TAB

Created Date : 11/25/2025 - Trinity Dodds - National TAB

Completed Date : 12/04/2025 - Mark Johnson - National TAB

CheckList Item Details

MUA Inspection

No unusual noise or vibration?	Fail
---------------------------------------	------

Comment:

Motor vibrates and squeaks loudly when compartment is open

List any visual damage	Pass
-------------------------------	------

Comment:

If direct drive fan, is the speed controller or VFD functional?	N/A
--	-----

Comment:

If belt driven are the pulleys in good condition and not rusted?	Fail
---	------

Comment:

Pulleys rusted



12/04/2025

Is the belt tight?

Pass

Comment:

If there is a heater is it functional?

N/A

Comment:

No heat

Is gas valve turned on?

N/A

Comment:

If there is cooling, is it functional?

N/A

Comment:

No cooling

Are the intake air filters clean?

Pass

Comment:

Is the blower wheel clean and are internal compartments clean?

Pass

Comment:

If there is cooling, is the condenser in good condition?

N/A

Comment:



12-01-25 APPLEBEES PEMBROKE PINES, FL

CheckList Information

Name : 06: HOOD INSPECTION **Status :** Completed

Assigned Organization : National TAB **Asset :**

Requesting Organization : National TAB

Created Date : 11/25/2025 - Trinity Dodds - National TAB

Completed Date : 12/04/2025 - Mark Johnson - National TAB

CheckList Item Details

Hood Inspection

Is the hood free of any damage? Pass

Comment:

Are there any end panels installed on either side of the hood? N/A

Comment:

Are all hood filters installed and free of damage? Pass

Comment:

Do hood filters appear to be clean? Pass

Comment:

Is all kitchen equipment pushed underneath the hood with at least 6" of overhang on all sides? Fail

Comment:

Fryer is at left edge of HD 1L

Is the MUA discharge plenum clean and not clogged? If there is a PSP shine a light into the perforated metal and see if the top layer appears to be clogged Pass

Comment:

Are any of the ceiling tiles stained around the hood?

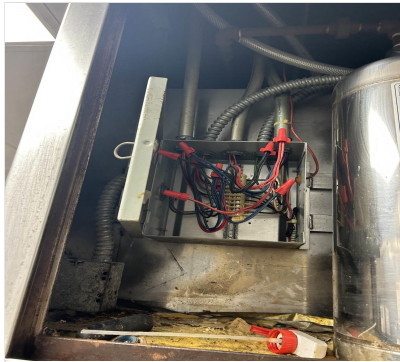
Pass

Comment:

Is there a pre-wire panel? If so take a picture with the door open

Pass

Comment:



12/04/2025

Is there a pre-wire panel? If so take a picture with the door open

N/A

Comment:

Perform a smoke test or observe heavy cooking and note the % capture:

Comment:

HD 1L: 85% (Smoke leakage at left edge due to close proximity of fryers) // HD 1R: 100%



National TAB

Project: 12-01-25 APPLEBEES PEMBROKE PINES, FL

System/Unit: AHU/RTU

Asset: RTU1

AREA:FRONT DINING

Unit Data	
	Actual
MFG	DAIKIN
Serial Num	N/A
Model Num	N/A

Motor Data	
	Actual
Motor MFG	US MOTORS
Horsepower	2.0
Motor Rpm	1750
Phase	3
Rated Voltage	208-230
Rated Amperage	6.4-6.0

Test Data	
	Actual
SF CFM	2998
SF RPM	816
MOTOR RPM	1745
RA CFM	2902
OA CFM	96
RL Voltage	208/210/210
RL Amperage	4.2/4.0/4.3
SF System SetPt	HIGH SPEED
OA Damper Position	MANUAL
OA Damper Type	MANUAL ADJUST

Performance Data	
	Actual
MA Plenum SP	-0.40"
Fan Suction SP	-0.68"
Fan Discharge SP	0.47"
Total ESP	0.87"
Fan Total SP	1.15"

Completed By: Mark Johnson on 12/03/2025

Notes:
Unit data sticker is not legible.

Written By: Mark Johnson on 12/05/2025

Unit Data - PHOTO LOG



12/02/2025

Test Data - PHOTO LOG



12/03/2025



National TAB

Project: 12-01-25 APPLEBEES PEMBROKE PINES, FL

AHU/RTU

Diffuser Supply (GRD)

RTU1/FRONT DINING

Asset			
Asset Name	Location	AK	FINAL CFM
SGRD1	FRONT VESTIBULE	1	179
SGRD2	FOH	1	343
SGRD3	DINING	1	281
SGRD4	DINING	1	299
SGRD5	DINING	1	311
SGRD6	DINING	1	417
SGRD7	DINING	1	386
SGRD8	DINING	1	378
SGRD9	DINING	1	404
Total			2998



National TAB

Project: 12-01-25 APPLEBEES PEMBROKE PINES, FL

System/Unit: AHU/RTU

Asset: RTU2

AREA:BAR + MAIN DINING

Unit Data	
	Actual
MFG	ICP
Serial Num	P221237433
Model Num	RAS119H0CA0AAAA

Motor Data	
	Actual
Motor MFG	MARATHON
Horsepower	N/A
Motor Rpm	1725
Phase	3
Rated Voltage	230
Rated Amperage	10.6

Test Data	
	Actual
SF CFM	2729
SF RPM	889
MOTOR RPM	1742
RA CFM	1737
OA CFM	992
RL Voltage	212
RL Amperage	6.1/5.7/5.9
SF System SetPt	60 HZ
OA Damper Position	MANUAL [1]
OA Damper Type	MANUAL ADJUST

Performance Data	
	Actual
MA Plenum SP	-0.95"
Fan Suction SP	-1.22"
Fan Discharge SP	0.15"
Total ESP	1.10"
Fan Total SP	1.37"

Completed By: Mark Johnson on 12/03/2025

Notes:

[1] Damper is broken in half, OA is fully open on one side as a result.

Written By: Mark Johnson on 12/03/2025

Unit Data - PHOTO LOG



12/03/2025



National TAB

Project: 12-01-25 APPLEBEES PEMBROKE PINES, FL

AHU/RTU

Diffuser Supply (GRD)

RTU2/BAR + MAIN DINING

Asset				
Asset Name	Location	AK	FINAL CFM	
SGRD1	BAR/DINING	1	193	
SGRD2	BAR/DINING	1	265	
SGRD3	BAR/DINING	1	394	
SGRD4	BAR/DINING	1	275	
SGRD5	BAR/DINING	1	172	
SGRD6	BAR/DINING	1	165	
SGRD7	BAR/DINING	1	223	
SGRD8	BAR/DINING	1	231	
SGRD9	BAR/DINING	1	194	
SGRD10	DINING	1	204	
SGRD11	DINING	1	156	
SGRD12	DINING	1	257	
Total			2729	



National TAB

Project: 12-01-25 APPLEBEES PEMBROKE PINES, FL

System/Unit: AHU/RTU

Asset: RTU3

AREA:SIDE DINING + RESTROOMS

Unit Data	
	Actual
MFG	ICP
Serial Num	P221036031
Model Num	RAS089H0CA0AAAA

Motor Data	
	Actual
Motor MFG	MARATHON
Horsepower	N/A
Motor Rpm	1725
Phase	3
Rated Voltage	208-230
Rated Amperage	8.8-8.6

Test Data	
	Actual
SF CFM	2898
SF RPM	778
MOTOR RPM	1748
RA CFM	2898
OA CFM	0 [1]
RL Voltage	213
RL Amperage	4.9/4.9/5.4
SF System SetPt	60 HZ
OA Damper Position	CLOSED [1]
OA Damper Type	MANUAL ADJUST

Performance Data	
	Actual
MA Plenum SP	-0.48"
Fan Suction SP	-0.85"
Fan Discharge SP	0.27"
Total ESP	0.75"
Fan Total SP	1.12"

Completed By: Mark Johnson on 12/03/2025

Notes:

[1] A negligible amount of outside air is present due to damage to OA damper (very small gap at top-right corner). Cannot be accurately measured on the roof.

Written By: Mark Johnson on 12/03/2025

Unit Data - PHOTO LOG



12/03/2025

Test Data - PHOTO LOG



12/03/2025



National TAB

Project: 12-01-25 APPLEBEES PEMBROKE PINES, FL

AHU/RTU

Diffuser Supply (GRD)

RTU3/SIDE DINING + RESTROOMS

Asset				
Asset Name	Location	AK	FINAL CFM	
SGRD1	SIDE DINING	1	351	
SGRD2	SIDE DINING	1	402	
SGRD3	SIDE DINING	1	363	
SGRD4	SIDE DINING	1	354	
SGRD5	SIDE DINING	1	325	
SGRD6	SIDE DINING	1	179	
SGRD7	SIDE DINING	1	363	
SGRD8	HALL	1	230	
SGRD9	MEN'S RR	1	63	
SGRD10	WOMEN'S RR	1	128	
SGRD11	OFFICE	1	140	
Total			2898	



National TAB

Project: 12-01-25 APPLEBEES PEMBROKE PINES, FL

System/Unit: AHU/RTU

Asset: RTU4

AREA:KITCHEN

Unit Data	
	Actual
MFG	ICP
Serial Num	P230873302
Model Num	RAV120H02A0AAAA

Motor Data	
	Actual
Phase	3
Rated Voltage	208/230
Rated Amperage	6.4

Test Data	
	Actual
SF CFM	4030
SF RPM	1926
MOTOR RPM	N/A
RA CFM	3192
OA CFM	838
RL Voltage	212/211/213
RL Amperage	6.7/6.4/5.7
SF System SetPt	C70
OA Damper Position	MANUAL (MARKED)
OA Damper Type	MANUAL ADJUST

Performance Data	
	Actual
MA Plenum SP	-0.91"
Fan Suction SP	-1.58"
Fan Discharge SP	0.22"
Total ESP	1.13"
Fan Total SP	1.80"

Completed By: Mark Johnson on 12/03/2025

Unit Data - PHOTO LOG



12/03/2025

Test Data - PHOTO LOG



12/03/2025



National TAB

Project:12-01-25 APPLEBEES PEMBROKE PINES, FL

AHU/RTU

Diffuser Supply (GRD)

RTU4/KITCHEN

Asset				
Asset Name	Location	AK	FINAL CFM	
SGRD1	KITCHEN	1	357	
SGRD2	KITCHEN	1	486	
SGRD3	KITCHEN	1	500	
SGRD4	KITCHEN	1	503	
SGRD5	KITCHEN	1	561	
SGRD6	KITCHEN	1	644	
SGRD7	KITCHEN	1	556	
SGRD8	KITCHEN	1	423	
Total			4030	



National TAB

Project: 12-01-25 APPLEBEES PEMBROKE PINES, FL

System/Unit: AHU/RTU

Asset: RTU5

AREA:BOH

Unit Data	
	Actual
MFG	CARRIER
Serial Num	3313C85440
Model Num	50TC-A06A2B5A0A0A0

Motor Data	
	Actual
Motor MFG	MARATHON
Horsepower	N/A
Motor Rpm	1725
Phase	3
Rated Voltage	208-230/460
Rated Amperage	6.9-6.7/3.4

Test Data	
	Actual
SF CFM	1892
SF RPM	1278
MOTOR RPM	1773
RA CFM	1892
OA CFM	0
RL Voltage	209
RL Amperage	3.9/3.9/3.8
SF System SetPt	60 HZ
OA Damper Position	CLOSED
OA Damper Type	MANUAL ADJUST

Performance Data	
	Actual
MA Plenum SP	-0.25"
Fan Suction SP	-0.60"
Fan Discharge SP	0.18"
Total ESP	0.43"
Fan Total SP	0.78"

Completed By: Mark Johnson on 12/03/2025

Unit Data - PHOTO LOG



12/03/2025

Test Data - PHOTO LOG



12/03/2025



National TAB

Project: 12-01-25 APPLEBEES PEMBROKE PINES, FL

AHU/RTU

Diffuser Supply (GRD)

RTU5/BOH

Asset			
Asset Name	Location	AK	FINAL CFM
SGRD1	BOH	1	408
SGRD2	BOH	1	156
SGRD3	BOH	1	664
SGRD4	BOH	1	664
Total			1892

Asset	Notes	Date	Written By
SGRD3	Diffusers 3 and 4 were inaccessible via flow hood. Airflow was measured by traversing the common branch serving diffusers 3 and 4. Total airflow for the branch is 1328 CFM.	12/05/2025	Mark Johnson



National TAB

Project: 12-01-25 APPLEBEES PEMBROKE PINES, FL

System/Unit: FAN - Supply

Asset: MAU1

AREA:HD 1

Unit Data	
	Actual
MFG	N/A
Model Num	N/A
Serial Num	N/A

Motor Data	
	Actual
Motor MFG	US MOTORS
Horsepower	2
Motor Rpm	1725
Phase	3
Voltage (rated)	208-230/460
Amperage (rated)	6.1-6.3/3.1

Test Data	
	Actual
CFM	4174
SF RPM	860
Motor RPM	1695
SF System SetPt	60 HZ
RL Voltage	213/211/213
RL Amperage	8.2/8.2/8.3

Completed By: Mark Johnson on 12/03/2025

Notes:
No unit nameplate.

Written By: Mark Johnson on 12/02/2025

Unit Data - PHOTO LOG



12/02/2025



National TAB

Project: 12-01-25 APPLEBEES PEMBROKE PINES, FL

System/Unit: FAN - Exhaust

Asset: EF1

AREA:HD 1L

Unit Data	
	Actual
MFG	LAU INDUSTRIES
Model Num	N/A
Serial Num	N/A

Motor Data	
	Actual
Horsepower	1.5
Motor Rpm	1725
Phase	3
Voltage (rated)	208-230
Amperage (rated)	4.7

Test Data	
	Actual
CFM	4269
Fan RPM	N/A
Motor RPM	N/A
System SetPt	60 HZ
RL Voltage	207 (L1-L3)
RL Amperage	5.2 (L1)

Completed By: Mark Johnson on 12/03/2025

Notes:

Unit model/serial numbers are not legible. No disconnect on roof, cannot power off fan to check RPMs due to cooking.

Written By: Mark Johnson on 12/03/2025

Unit Data - PHOTO LOG



12/02/2025



National TAB

Project: 12-01-25 APPLEBEES PEMBROKE PINES, FL

System/Unit: FAN - Exhaust

Asset: EF2

AREA:HD 1R

Unit Data	
	Actual
MFG	CAPTIVEAIRE
Model Num	N/A
Serial Num	N/A [1]

Motor Data	
	Actual
Horsepower	1.5
Motor Rpm	1725
Phase	3
Voltage (rated)	200-230
Amperage (rated)	5.8

Test Data	
	Actual
CFM	2778
Fan RPM	1011
Motor RPM	1736
System SetPt	60 HZ
RL Voltage	212/212/209
RL Amperage	4.1 (L2) [2]

Completed By: Mark Johnson on 12/03/2025

Notes:

[1] Unit nameplate is not legible.

[2] Lines 1 and 3 wires are too short to collect amperage readings safely.

Written By: Mark Johnson on 12/02/2025

Unit Data - PHOTO LOG



12/02/2025



National TAB

Project: 12-01-25 APPLEBEES PEMBROKE PINES, FL

System/Unit: FAN - Exhaust

Asset: EF3

AREA:HD 2

Unit Data	
	Actual
MFG	DAYTON
Model Num	5DVP8
Serial Num	25658239

Motor Data	
	Actual
Horsepower	1/2
Motor Rpm	1650
Phase	1
Voltage (rated)	115/230
Amperage (rated)	5.4/2.7

Test Data	
	Actual
CFM	1615
Fan RPM	DD
Motor RPM	DD
System SetPt	SINGLE SPEED
RL Voltage	121
RL Amperage	4.0

Completed By: Mark Johnson on 12/03/2025

Unit Data - PHOTO LOG



12/02/2025



National TAB

Project: 12-01-25 APPLEBEES PEMBROKE PINES, FL

System/Unit: FAN - Exhaust

Asset: EF4

AREA: WATER ROOM

Unit Data	
	Actual
MFG	DAYTON
Model Num	4YC70G
Serial Num	05620868

Motor Data	
	Actual
Horsepower	1/8
Motor Rpm	860
Phase	1
Voltage (rated)	115
Amperage (rated)	2.1

Test Data	
	Actual
CFM	0
Fan RPM	0
Motor RPM	0
System SetPt	SINGLE SPEED
RL Voltage	0
RL Amperage	0

Completed By: Mark Johnson on 12/02/2025

Notes:

Not powered. Requires service.

Written By: Mark Johnson on 12/02/2025

Unit Data - PHOTO LOG



12/05/2025



National TAB

Project: 12-01-25 APPLEBEES PEMBROKE PINES, FL

System/Unit: FAN - Exhaust

Asset: EF5

AREA:RESTROOMS

Unit Data	
	Actual
MFG	CAPTIVEAIRE
Model Num	DR12HFA
Serial Num	1496927

Motor Data	
	Actual
Horsepower	0.18
Motor Rpm	1625
Phase	1
Voltage (rated)	115
Amperage (rated)	2.0

Test Data	
	Actual
CFM	0
Fan RPM	0
Motor RPM	0
System SetPt	SPEED CONTROLLER
RL Voltage	0
RL Amperage	0

Completed By: Mark Johnson on 12/02/2025

Notes:
Motor is seized. Requires service.

Written By: Mark Johnson on 12/02/2025

Unit Data - PHOTO LOG



12/05/2025



National TAB

Project: 12-01-25 APPLEBEES PEMBROKE PINES, FL

System/Unit: Kitchen Hood Type I

Asset: HDL1

AREA:KITCHEN

Unit Data	
	Actual
MFG	N/A
Model Num	N/A
Job / Serial Num	N/A
Hood length	132"
Hood Width	48"
Hood Height	78" AFF
Supply Plenum Type	BACK RETURN

Test Data Exhaust		
	Design	Actual
Filter Type	-	BAFFLE
Filter Size 1	-	16x20
Filter Size 2	-	16x16
Filter Qty 1	-	5
Filter Qty 2	-	2
Filter AK factor size 1	-	2.08
Filters AK factor size 2	-	1.62
Filter Total AK Area	-	13.64
Filter1 FPM	-	255
Filter2 FPM	-	279
Filter3 FPM	-	360
Filter4 FPM	-	368
Filter5 FPM	-	344
Filter6 FPM	-	299
Filter7 FPM	-	288
CFM	-	4269

Cooking Equipment	
	Actual
Item 1	FRYERS
Item 2	GRIDDLE
Item 3	OVEN

Completed By: Mark Johnson on 12/03/2025

Unit Data - PHOTO LOG



12/03/2025



National TAB

Project: 12-01-25 APPLEBEES PEMBROKE PINES, FL

System/Unit: Kitchen Hood Type I

Asset: HDR1

AREA:KITCHEN

Unit Data	
	Actual
MFG	N/A
Model Num	N/A
Job / Serial Num	N/A
Hood length	108"
Hood Width	48"
Hood Height	78" AFF
Supply Plenum Type	BACK RETURN

Test Data Exhaust		
	Design	Actual
Filter Type	-	BAFFLE
Filter Size 1	-	16x25
Filter Size 2	-	16x20
Filter Qty 1	-	1
Filter Qty 2	-	4
Filter AK factor size 1	-	2.66
Filters AK factor size 2	-	2.08
Filter Total AK Area	-	10.98
Filter1 FPM	-	259
Filter2 FPM	-	284
Filter3 FPM	-	310
Filter4 FPM	-	215
Filter5 FPM	-	201
CFM	-	2778

Cooking Equipment	
	Actual
Item 1	GRIDDLE
Item 2	GAS STOVE

Completed By: Mark Johnson on 12/03/2025

Unit Data - PHOTO LOG



12/03/2025



National TAB

Project: 12-01-25 APPLEBEES PEMBROKE PINES, FL

System/Unit: Kitchen Hood Type II

Asset: HD2

AREA:DISHWASHER

Unit Data

	Design	Actual
MFG	NA	N/A
Model Num	NA	N/A
Serial Num	-	N/A
Type	-	TYPE II
Hood length	-	84"
Hood Width	-	36"

Test Data

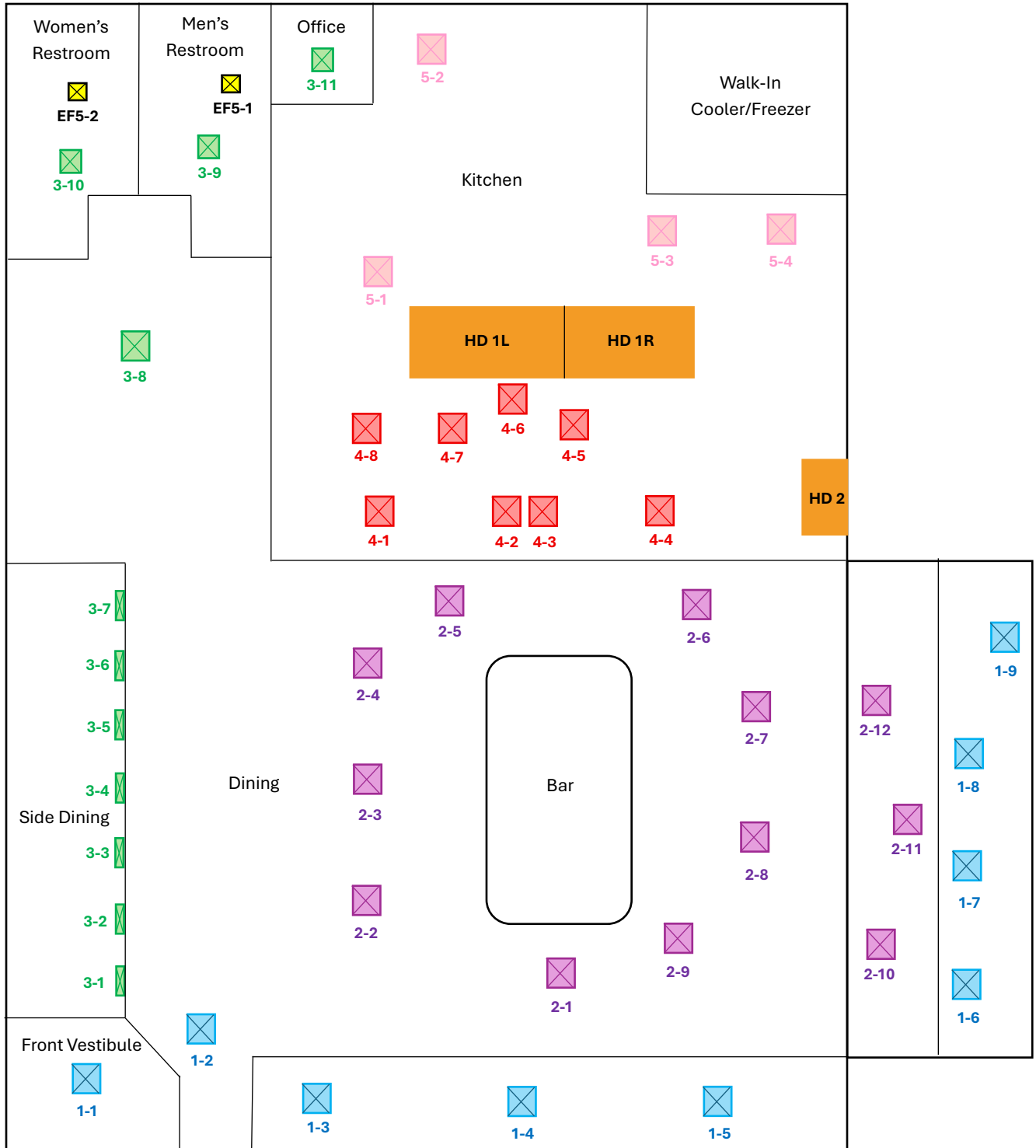
	Design	Actual
Exhaust CFM	-	1615

Completed By: Mark Johnson on 12/03/2025

Unit Data - PHOTO LOG



12/03/2025



NOT TO SCALE