

National TAB - Kansas City
1126 Swift St
N Kansas City, MO 64116



Report: TAB REPORT
Function: Test, Adjust, & Balance
Date: 09/21/2023

PROJECT

**07-31-23 SWEETGREEN - 38TH &
BROADWAY (NEW YORK, NY)**

1384 BROADWAY

NEW YORK, NY

Client

Sweetgreen

Project Summary

Purpose of the visit was to provide a test and balance of the space. The client stated that there were cooling issues over the summer and they wanted a TAB completed to ensure no issues with the equipment. The scope was to balance the total flow for all equipment.

AHU-1 (Cellar) – Airflow balanced successfully to 1482 CFM (106% of design).

AHU-2 (1st floor kitchen) – Airflow balanced successfully to 1402 CFM (101% of design)

AHU-3 (1st floor kitchen) – Ductless unit outside of TAB scope. Noted to be operational.

AHU-4 (1st floor dining) – Airflow initially found at 1710 CFM (57% of design). Thermostat was locked and unable to make changes. Return trip made after getting stat unlocked. Confirmed thermostat was set to high speed. Found the filter to be dirty. Removed it temporarily and airflow increased to 1919 CFM (64% of design). Filter appeared to be dirty.

EF-1 (Kitchen) – Fan is operating but could not fully be measured due to operations.

EF-3 (Restrooms) – Fan is not running. It was not accessible to inspect

Recommendations:

1. Recommend AHU-4 coil be cleaned and airflow re-tested.
2. Recommend servicing EF-3
3. Once items 1 and 2 are completed, recommend NTi return to complete TAB.

Fan Test Sheet

Project:	Sweetgreen	System:	AHU-1
Location:	Cellar	Serves:	Cellar
Tech:	Xavier Santiago	Date:	04/03/23

Fan Data	
Make:	Mitsubishi
Model:	PEFY-P48NMHU-E2
Serial No.:	6ZW01873

Motor Data			
HP:		RPM:	
Phase:	1	SF:	1.15
	Rated	Actual	
Volts:	208/230	210	
Amps:		3.8	
Hz:	60	60	

Air Flow Data		
	Design	Actual
Total	1,400	1,482

Drive Data		
	Size	Bore
Motor		
Fan		
Belts	Direct Drive	
Centerline Dist.		
	Design	Actual
Fan RPM		High

Static Pressure		
Total Design:	0.80	in.w.c.
Suction:	-1.05	in.w.c.
Discharge:	0.18	in.w.c.
Total Actual:	1.23	in.w.c.

Duct					Design		Actual				Notes
No.	Height	Width	Insul.	Area	FPM	CFM	AFPM	CFM	SP	%	
1	21.5	21.5		2.73	513	1,400	543	1,482		106%	Filter bank return
2											

Notes:

Fan Test Sheet

Project:	Sweetgreen	System:	AHU-2
Location:	1st Floor	Serves:	1st Floor
Tech:	Xavier Santiago	Date:	04/03/23

Fan Data	
Make:	Mitsubishi
Model:	NA
Serial No.:	NA

Motor Data			
HP:		RPM:	
Phase:		SF:	1.15
	Rated	Actual	
Volts:			
Amps:			
Hz:	60		60

Air Flow Data		
	Design	Actual
Total	1,400	1,402

Drive Data		
	Size	Bore
Motor		
Fan		
Belts	Direct Drive	
Centerline Dist.		
	Design	Actual
Fan RPM		High

Static Pressure		
Total Design:	0.80	in.w.c.
Suction:	-0.81	in.w.c.
Discharge:	0.20	in.w.c.
Total Actual:	1.01	in.w.c.

Duct					Design		Actual				Notes
No.	Height	Width	Insul.	Area	FPM	CFM	AFPM	CFM	SP	%	
1	21.5	21.5		2.73	513	1,400	514	1,402		100%	Filter bank return
2											

Notes:

Fan Test Sheet

Project:	Sweetgreen	System:	AHU-4
Location:	1st Floor	Serves:	1st Floor
Tech:	Xavier Santiago	Date:	07/31/23

Fan Data	
Make:	Mitsubishi
Model:	PEFY-P96NMHSU-E
Serial No.:	66W03038

Motor Data			
HP:		RPM:	
Phase:	1	SF:	1.15
	Rated	Actual	
Volts:	208/230	210	
Amps:	8.2/7	5.3	
Hz:	60	60	

Air Flow Data		
	Design	Actual
Total	3,000	1,919

Drive Data		
	Size	Bore
Motor		
Fan		
Belts	Direct Drive	
Centerline Dist.		
	Design	Actual
Fan RPM		High

Static Pressure		
Total Design:	0.80	in.w.c.
Suction:	-0.55	in.w.c.
Discharge:	0.11	in.w.c.
Total Actual:	0.66	in.w.c.

Duct					Design		Actual				Notes
No.	Height	Width	Insul.	Area	FPM	CFM	AFPM	CFM	SP	%	
1	14	40	0.5	3.52	852	3,000	545	1,919	0.60	64%	Supply Duct
2											

Notes:

Stat at high speed.
 Filters dirty; readings taken with filters removed.
 Coil appears to be dirty.

Fan Test Sheet

Project:	Sweetgreen	System:	EF-1
Location:	1st Floor	Serves:	1st Floor
Tech:	Xavier Santiago	Date:	04/03/23

Fan Data	
Make:	PennBarry
Model:	SX115RC
Serial No.:	E16DZ03454

Air Flow Data		
	Design	Actual
Total	1100	[1]

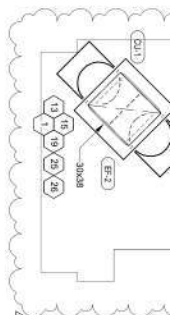
Static Pressure		
Total Design:	0.80	in.w.c.
Suction:	-0.68	in.w.c.
Discharge:	0.07	in.w.c.
Total Actual:	0.76	in.w.c.

Motor Data			
HP:	44929.0	RPM:	1550
Phase:	1	SF:	1.15
	Rated	Actual	
Volts:	115	119	
Amps:		2.80	
Hz:	60	60	

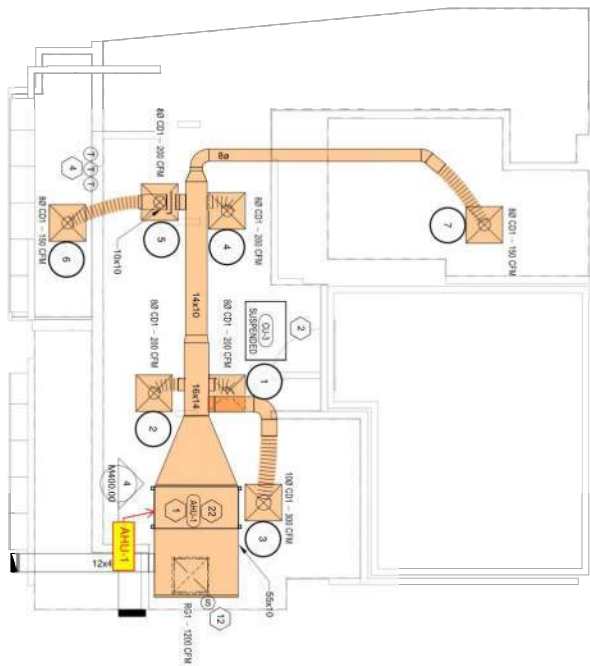
Drive Data		
	Size	Bore
Motor		
Fan		
Belts	Direct Drive	
Centerline Dist.		
	Design	Actual
Fan RPM	1550	

Notes:

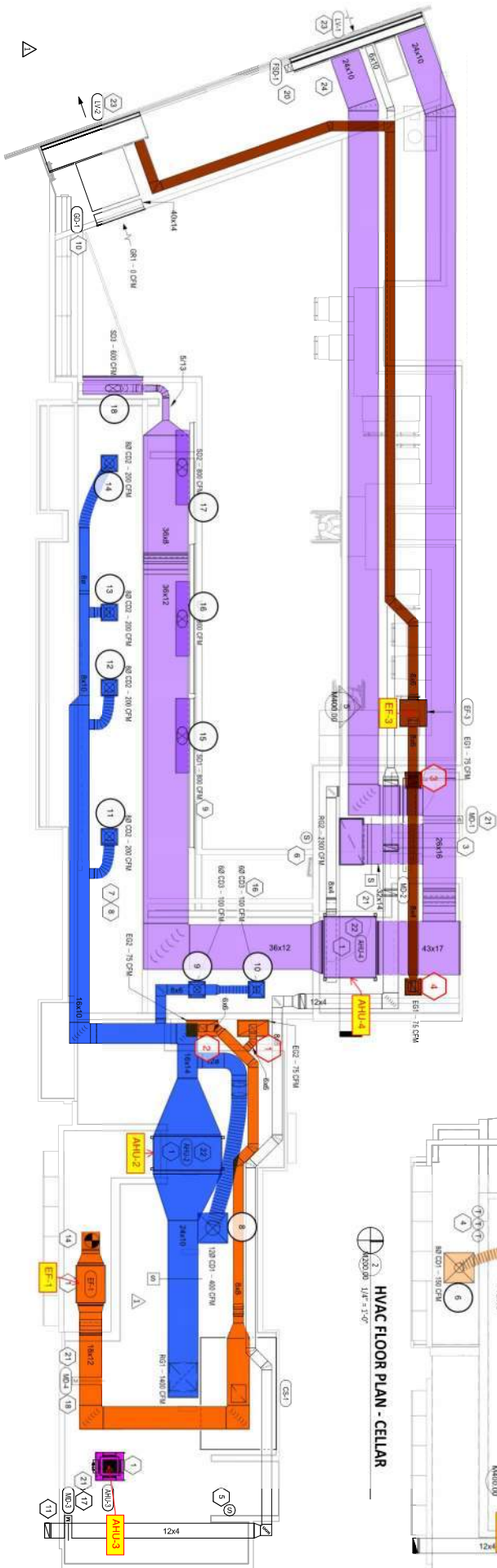
Fan is running but testing could not be completed due to busy operations.



5 HVAC ROOF PLAN
 1/4" = 1'-0"



7 HVAC FLOOR PLAN - CELLAR
 1/4" = 1'-0"



1 HVAC FLOOR PLAN - MAIN
 1/4" = 1'-0"