

**RFCP-007 - SDF EXHAUST FAN MODIFICATION
SHEET 3 - M02**

GENERAL SHEET NOTES

SHEET KEYNOTES

- 12"x10" EXHAUST DUCT DN TO 1'-0" ABOVE CONTAINMENT FLOOR, COVER OPENING W/ 12" SQ. ALUM BIRDSCREEN, PROVIDE VCD @ 5'-0" ABOVE GRATING, SET @ 500 CFM.
- 1 1/4" CONDENSATE DRAIN TO FR, SEE PLUMBING DWG.

NO.	BY	CHK/APP
2	PEM	LDA
1	JKS	AEC

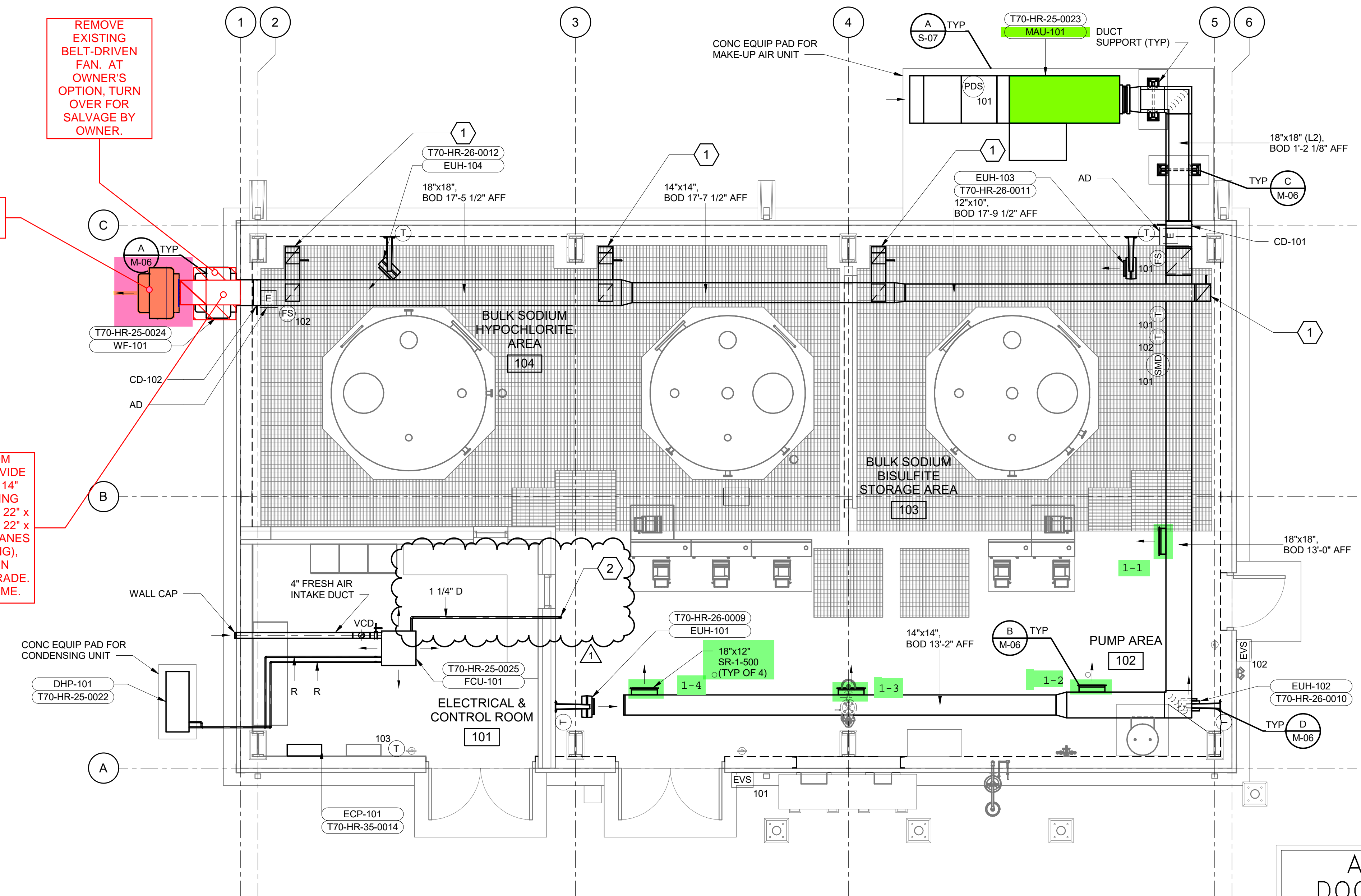
ORIGINAL DRAWING WAS APPROVED FOR REVISIONS BY THE REGISTERED PROFESSIONAL ENGINEER IN THE STATE OF OHIO, PE #82150 ON 11/27/19

BLACK & VEATCH
Black & Veatch Corporation
Cincinnati, Ohio

CINCINNATI, OHIO
METROPOLITAN SEWER DISTRICT
SSO 700 STF DISINFECTION IMPROVEMENTS
MECHANICAL
SDF HVAC FLOOR PLAN

DESIGNED: AEC
DETAILED: PEM
CHECKED: LDA
APPROVED: LDA
DATE: 11/27/2019

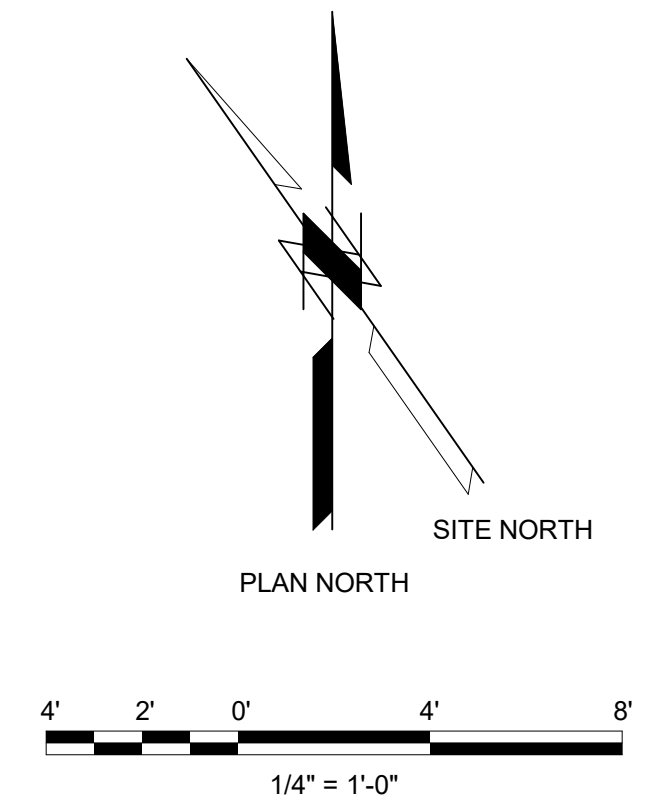
PROJECT NO.
402259
M-02
SHEET
31 OF 58



OPERATING FLOOR LEVEL - HVAC PLAN
1/4" = 1'-0"

AS-BID DOCUMENTS
USER ACKNOWLEDGES THAT, SHOULD THERE BE ANY DISCREPANCY BETWEEN THESE DOCUMENTS AND THE RECORD SET OF DOCUMENTS AND ANY ADDENDA ISSUED PRIOR TO THE BID, THE RECORD SET OF DOCUMENTS AND THE ORIGINAL ADDENDA SHALL GOVERN.

CONTRACT DRAWING
PRINTS NOT BEARING THIS STAMP WERE MADE PRIOR TO ADVERTISING FOR BIDS AND ARE TO BE CONSIDERED OBSOLETE FOR CONTRACT PURPOSES.



PLOTTED: 6/26/2020 3:05:50 PM
D10000

ACC. NO. 78726

6909