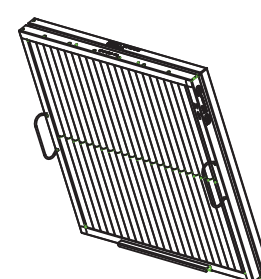
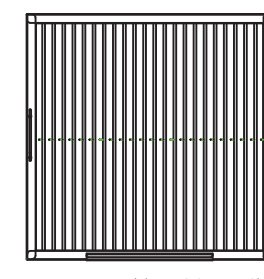
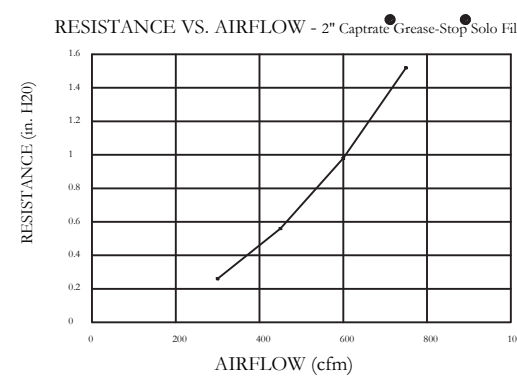
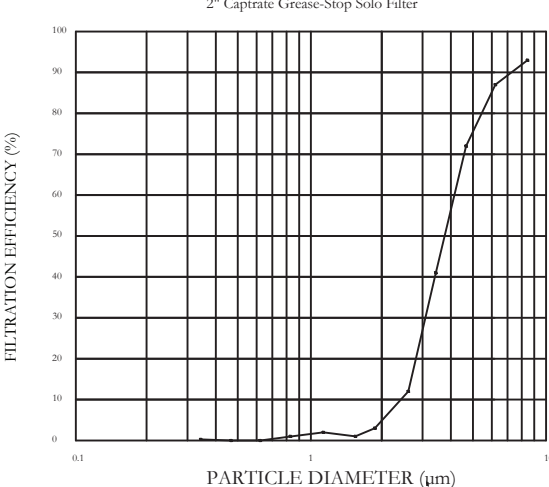


CAPTRATE SOLO FILTERS



CAPTRATE FILTERS ARE BUILT IN COMPLIANCE WITH
 NSF
 NFPA #96
 NSF STANDARD #2
 UL STANDARD #1046
 INT. MECH. CODE (IMC)



SPECIFICATION: CAPTRATE® GREASE-STOP® SOLO FILTER

THE CAPTRATE GREASE-STOP SOLO FILTER IS A SINGLE-STAGE FILTER FEATURING A UNIQUE S-BAFFLE DESIGN IN CONJUNCTION WITH A SLOTTED REAR BAFFLE DESIGN, TO DELIVER EXCEPTIONAL FILTRATION EFFICIENCY.
 FILTER IS CONSTRUCTED OF 430 STAINLESS STEEL, AND SIZED TO FIT INTO STANDARD 2-INCH DEEP HOOD CHANNEL(S).
 UNITS SHALL INCLUDE STAINLESS STEEL HANDLES AND A FASTENING DEVICE TO SECURE THE TWO COMPONENTS WHEN ASSEMBLED.
 ***GREASE EXTRACTION EFFICIENCY PERFORMANCE SHALL REMOVE AT LEAST 75% OF GREASE PARTICLES FIVE MICRONS IN SIZE, AND 90% GREASE PARTICLES SEVEN MICRONS IN SIZE AND LARGER, WITH A CORRESPONDING PRESSURE DROP NOT TO EXCEED 1.0 INCHES OF WATER GAUGE.

FILTER INFORMATION - CAPTRATE® GREASE-STOP® SOLO

NOMINAL SIZE (H x W)	ACTUAL DIMENSIONS (H x W x D)	FREE AREA (SQ. FEET)	WEIGHT (POUNDS)	VELOCITY (FEET PER MINUTE)	STATIC PRESSURE (WATER GAUGE)
20 x 20	19-5/8" x 19-5/8" x 1-7/8"	2.28	11	100	0.25
20 x 16	19-5/8" x 15-5/8" x 1-7/8"	1.78	8.9	125	0.35
16 x 20	15-5/8" x 19-5/8" x 1-7/8"	1.78	9.1	150	0.45
16 x 16	15-5/8" x 15-5/8" x 1-7/8"	1.39	7.4	175	0.75
12 x 20	11-5/8" x 19-5/8" x 1-7/8"	1.23	6.8	200	0.90
12 x 16	11-5/8" x 15-5/8" x 1-7/8"	0.96	5.6	225	1.00
10 x 20	9-5/8" x 19-5/8" x 1-7/8"	1.00	5.6	250	1.30
10 x 16	9-5/8" x 15-5/8" x 1-7/8"	0.78	4.6	275	1.50

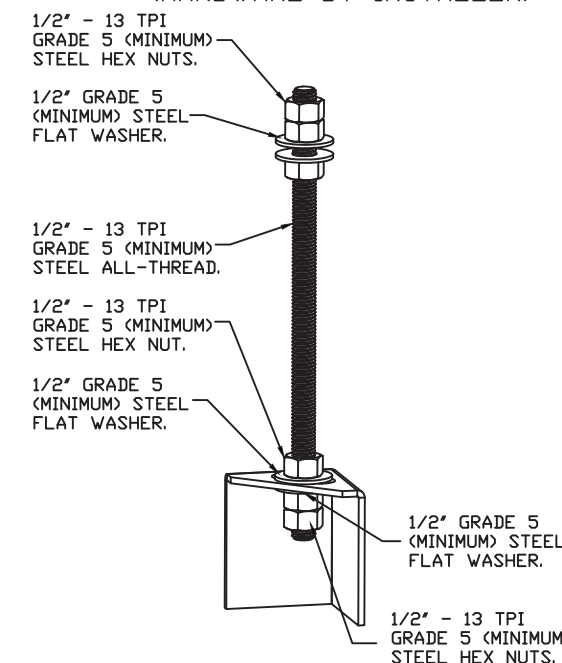
CAPTIVE-AIRE HOODS ARE BUILT IN COMPLIANCE WITH:

- NFPA #96
- NSF
- ETL Listed
- CALIFORNIA MECHANICAL CODE
- INTERNATIONAL MECHANICAL CODE



BUILDING CODES

HOOD CORNER HANGING ANGLE (HARDWARE BY INSTALLER)



ASSEMBLY INSTRUCTIONS

HANGING ANGLE MUST BE SUPPORTED WITH 1/2" - 13 TPI GRADE 5 (MINIMUM) ALL-THREAD, SANDWICH HANGING ANGLES AND CEILING ANCHOR POINTS WITH 1/2" GRADE 5 (MINIMUM) STEEL FLAT WASHERS AND 1/2" - 13 TPI GRADE 5 (MINIMUM) HEX NUTS AS SHOWN. MUST USE DOUBLED HEX NUT CONFIGURATION BENEATH HOOD HANGING ANGLES AND ABOVE CEILING ANCHORS. MAINTAIN 1/4" OF EXPOSED THREADS BENEATH BOTTOM HEX NUT. TORQUE ALL HEX NUTS TO 57 FT-LBS.

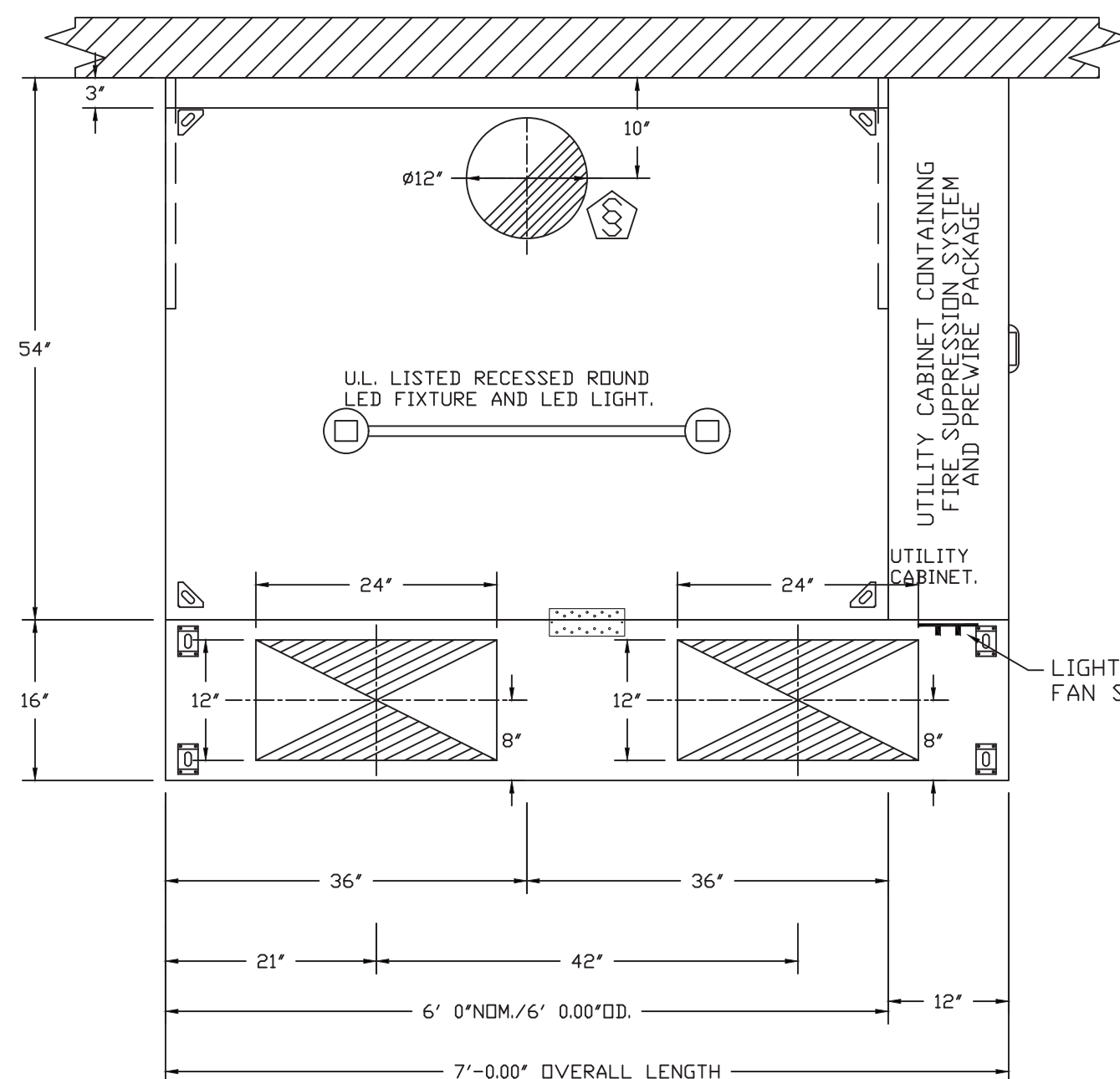
ND-2 HANGING ANGLE DETAIL

HANGING ANGLES WILL BE LOCATED IN THE FOLLOWING LOCATIONS FOR WALL CANOPIES

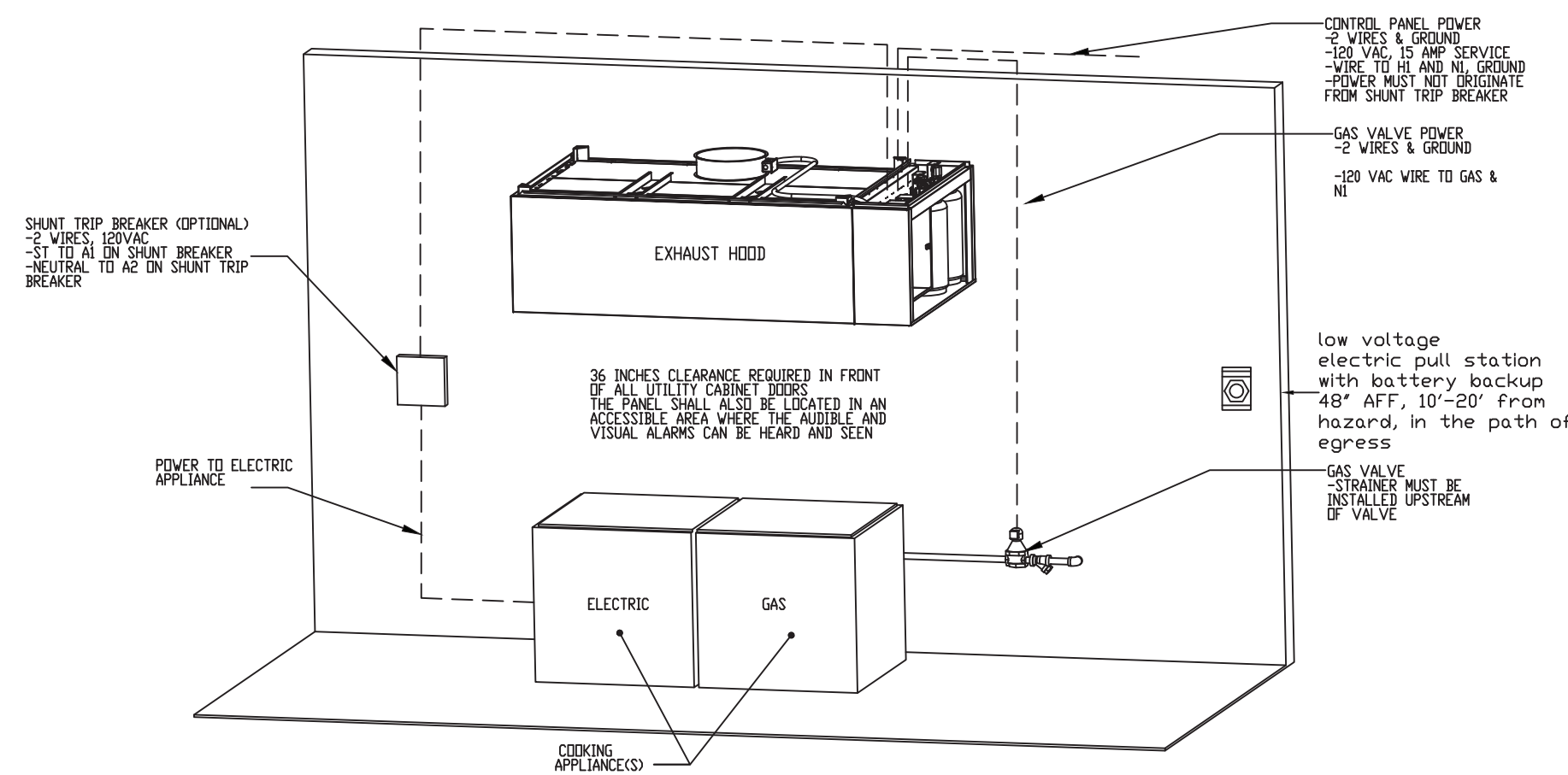
HOOD STYLE	DIM FROM REAR	DIM FROM FRONT (24" High Hood)	DIM FROM SIDES (24" High Hood)
ND-2 (WI) Exhaust only	4.125"	2.25"	2.25"
VHB (-B)	2.25"	2.25"	2.25"

ALL OTHER HOOD MODELS CONTACT CAPTIVE AIRE FOR HANGING ANGLE LOCATIONS

HANGING ANGLE LOCATIONS

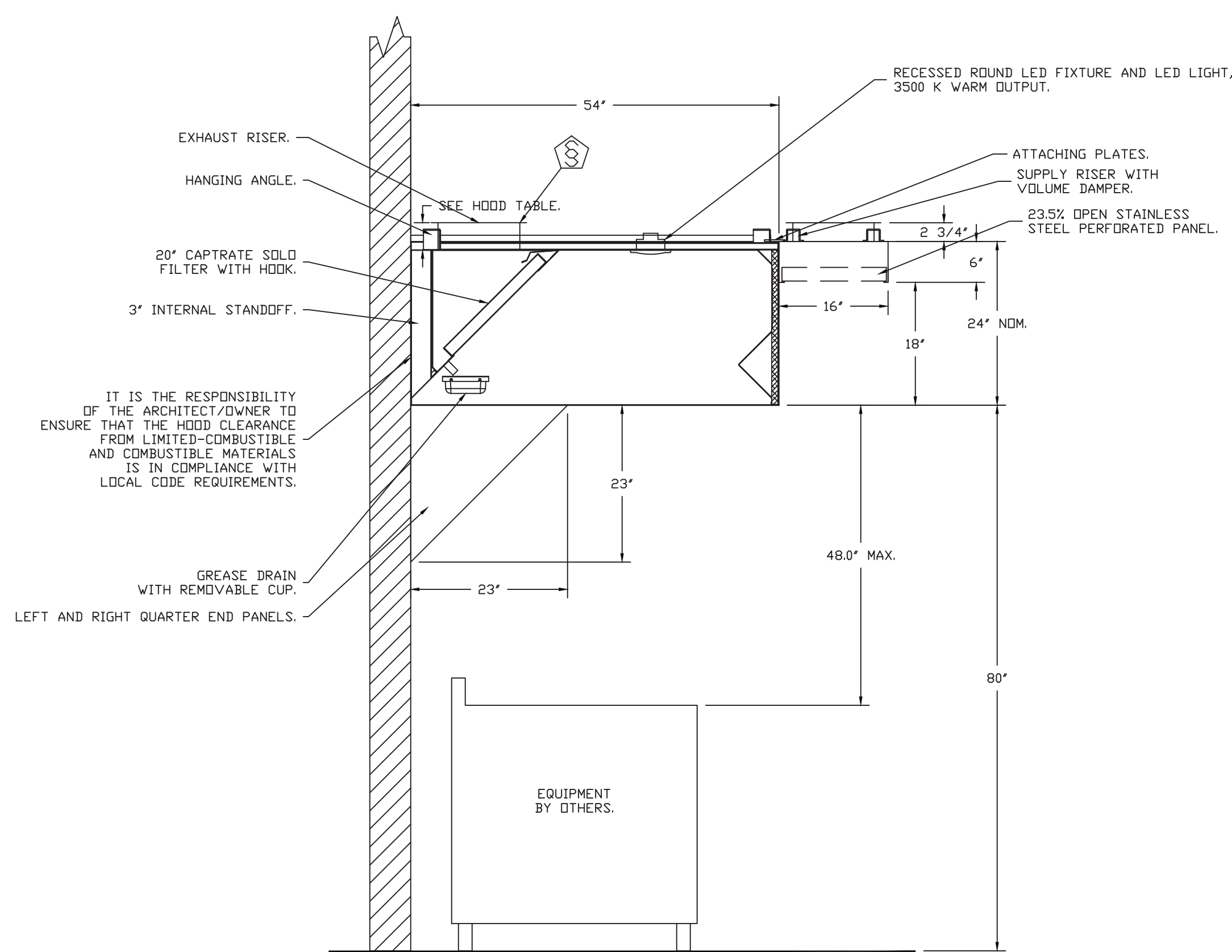


PLAN VIEW - HOOD #1
 6' 0.00" LONG 5424ND-2-PSP-F



Typical UL300 "Tank" system layout

Captive Aire UL300 "Tank" system with battery backup and electronic detection will monitor and turn off appliances and gas valve if the system's Fenwal sensor or push station is disabled.
 In event of a power outage, "Tank" system will use battery backup to monitor max temp of temp sensor, rate of rise of temp sensor, and push station. It will shut down electric and gas under hood and will discharge system if there is a fire.



SECTION VIEW - MODEL 5424ND-2-PSP-F
 HOOD - #1

HOOD INFORMATION - JOB#5654995

HOOD NO	TAG	MODEL	MANUFACTURER	LENGTH	MAX COOKING TEMP	TYPE	APPLIANCE DUTY	DESIGN CFM/FT	TOTAL EXH CFM	EXHAUST PLENUM RISER(S)				TOTAL SUPPLY CFM	HOOD CONSTRUCTION	HOOD CONFIG			
										WIDTH	LENG	HEIGHT	DIA			CFM	VEL	SP	END TO END
1		5424 ND-2-PSP-F	CAPTIVEAIRE	6' 0"	600 DEG	I	HEAVY	225	1350		4'	12"	1350	1719	-0.638"	1215	430 SS WHERE EXPOSED	ALONE	ALONE

HOOD INFORMATION

HOOD NO	TAG	FILTER(S)				LIGHT(S)		UTILITY CABINET(S)				FIRE SYSTEM	HOOD HANGING WEIGHT			
		TYPE	QTY	HEIGHT	LENGTH	EFFICIENCY @ 7 MICRONS	QTY	TYPE	WIRE GUARD	TYPE	SIZE			ELECTRICAL MODEL #	SWITCHES QUANTITY	
1		CAPTRATE SOLO FILTER	4	20"	16"	85% SEE FILTER SPEC	2	RECESSED ROUND	NO			TANK FS	4.0/4.0	DCV-1111	1 LIGHT 1 FAN	679 LBS

HOOD OPTIONS

HOOD NO	TAG	OPTION
1		RIGHT QUARTER END PANEL 23" TOP WIDTH, 0" BOTTOM WIDTH, 23" HIGH 430 SS. LEFT QUARTER END PANEL 23" TOP WIDTH, 0" BOTTOM WIDTH, 23" HIGH 430 SS.

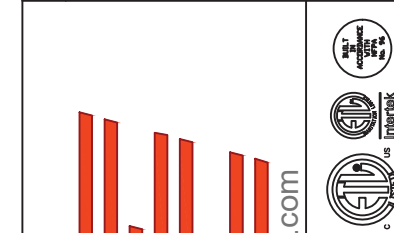
PERFORATED SUPPLY PLENUM(S)

HOOD NO	TAG	POS	LENGTH	WIDTH	HEIGHT	TYPE	RISER(S)				
							WIDTH	LENG	DIA	CFM	SP
1		Front	84"	16"	6"	MUA	12"	24"		607	0.165'
						MUA	12"	24"		607	0.165'

Building Safety Division
 City of Sunnyvale
 Aug 22 2023
 For installation in the City of Sunnyvale subject to code requirements and digital set approval.
 BUILDING-PLUMBING-ELECTRICAL-MECHANICAL
 The stamping of this plan shall not be held to permit or to be an approval of the violation of any provision of any City or State Law.
 JOB COPY
 These plans must be kept on the job site at all times.
 CITY OF SUNNYVALE

REVISIONS

DESCRIPTION	DATE



CAPTIVE AIRE
 Northern California Office
 1110 Burnett Ave, Suite G, Concord, CA 94520 PHONE: (925) 962-1999 FAX: (925) 566-8666 EMAIL: reg92@captiveaire.com
 www.captiveaire.com

Fibers - Fryer Hood

DATE: 9/22/2022
 DWG.#: 5654995
 DRAWN BY: MRE
 SCALE: 3/4" = 1'-0"
 MASTER DRAWING

SHEET NO. 1

EXHAUST FAN INFORMATION - JOB#5654995

FAN UNIT NO	TAG	QTY	FAN UNIT MODEL #	MANUFACTURER	CFM	ESP	RPM	MOTOR ENCL	HP	BHP	PHASE	VOLT	FLA	DISCHARGE VELOCITY	WEIGHT (LBS)	SONES
1		1	DUB5HFA	CAPTIVEAIRE	1350	1.000	1232	TEAD-ECM	1.000	0.3380	1	115	11.6	427 FPM	92	9.4

MUA FAN INFORMATION - JOB#5654995

FAN UNIT NO	TAG	QTY	FAN UNIT MODEL #	BLOWER	HOUSING	MIN CFM	DESIGN CFM	ESP	RPM	MOTOR ENCL	HP	BHP	PHASE	VOLT	FLA	MCA	MOCF	EVAP FLOW RATE (Gal/Hr)	EVAP COOLER ENTERING DB TEMP	EVAP COOLER ENTERING WB TEMP	EVAP COOLER LEAVING DB TEMP	EVAP COOLER LEAVING WB TEMP	WEIGHT (LBS)	SONES
2		1	A1-15D	15MF-1-MDD	A1	-	1215	0.500	1519	TEAD-ECM	1.000	0.5370	1	115	11.6	15.6A	25A	2.7	90.0°F	65.0°F	71.0°F	65.0°F	382	16.5

FAN OPTIONS

FAN UNIT NO	TAG	QTY	DESCRIPTION
1		1	GREASE BDX
		1	ECM WIRING PACKAGE - PWM SIGNAL FROM ECPM03 PREWIRE (TELCO MOTOR), CCW ROTATION
		1	2 YEAR PARTS WARRANTY
2		1	SIZE 1 UNTEMPERED COMMERCIAL DOWN DISCHARGE FOR DIRECT DRIVE AHUS
		1	EVAPORATIVE COOLER WIRING HARNESS
		1	ECM WIRING PACKAGE - DD SUPPLY - PWM SIGNAL FROM ECPM03 PREWIRE (TELCO MOTOR)
		1	2 YEAR PARTS WARRANTY

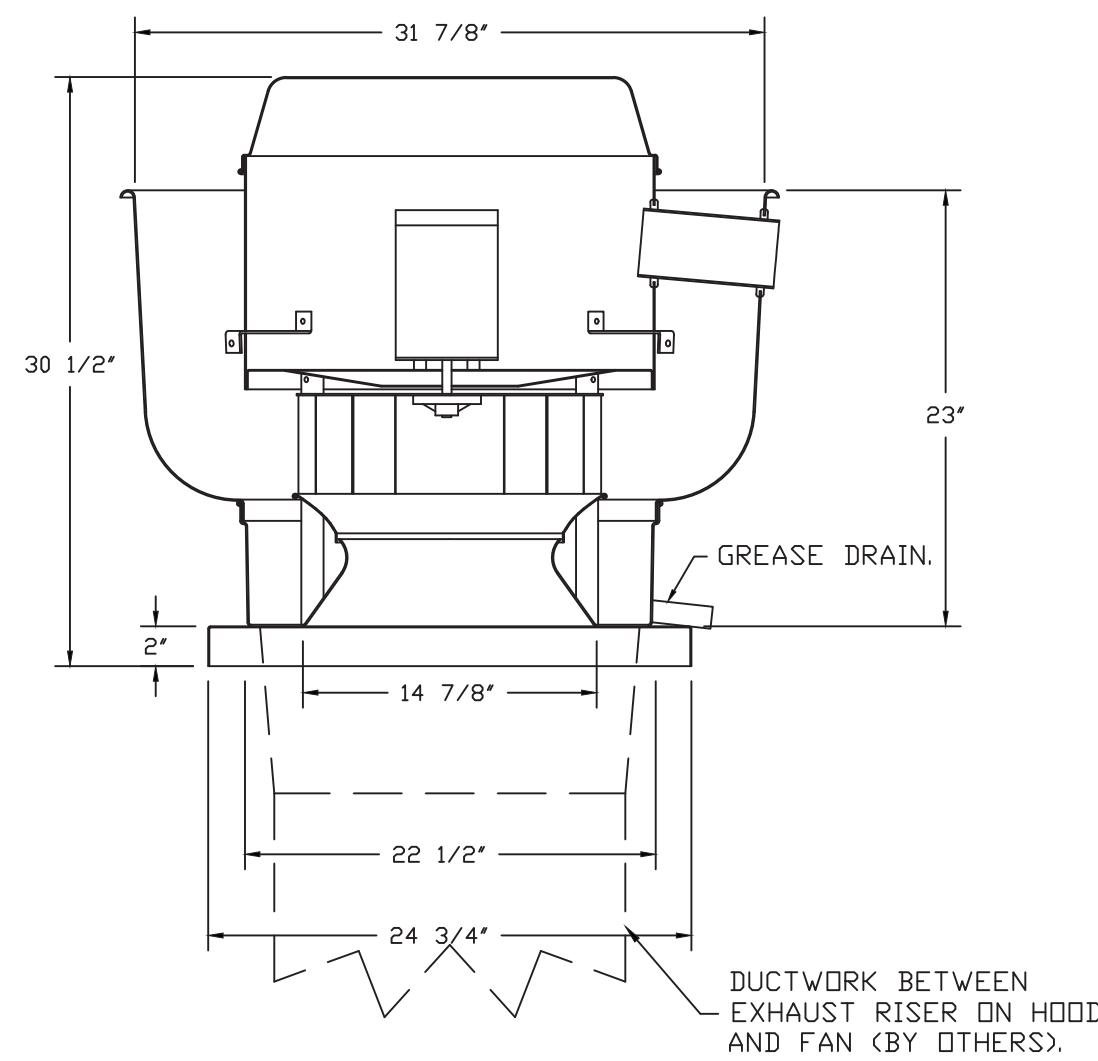
FAN ACCESSORIES

FAN UNIT NO	TAG	EXHAUST				SUPPLY		
		GREASE CUP	GRAVITY DAMPER	WALL MOUNT	SIDE DISCHARGE	GRAVITY DAMPER	MOTORIZED DAMPER	WALL MOUNT
1		YES						

CURB ASSEMBLIES

NO	ON FAN	WEIGHT	ITEM	SIZE
1	# 1	36 LBS	CURB	23.000"W X 23.000"L X 20.000"H ALONG LENGTH, RIGHT VENTED HINGED.
2	# 2	39 LBS	CURB	21.000"W X 21.000"L X 20.000"H ALONG LENGTH, RIGHT.
	# 2		RAIL	4.000"W X 4.000"L X 36.000"H RIGHT.

FAN #1 DUB5HFA - EXHAUST FAN



TOP VIEW

FEATURES:

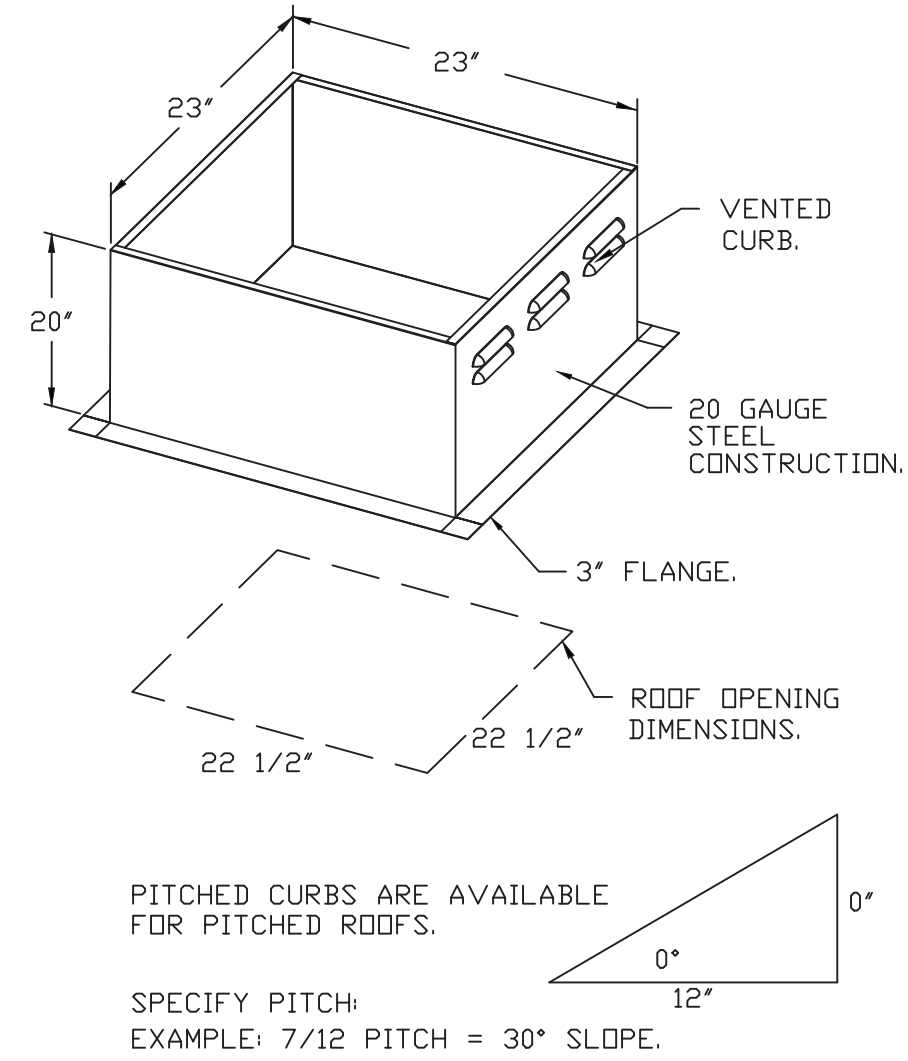
- DIRECT DRIVE CONSTRUCTION (NO BELTS/PULLEYS).
- ROOF MOUNTED FANS.
- RESTAURANT MODEL.
- UL705 AND UL762 AND ULC-S645
- VARIABLE SPEED CONTROL.
- INTERNAL WIRING.
- THERMAL OVERLOAD PROTECTION (SINGLE PHASE).
- HIGH HEAT OPERATION 300°F (149°C).
- GREASE CLASSIFICATION TESTING.
- NEMA 3R SAFETY DISCONNECT SWITCH.

NORMAL TEMPERATURE TEST
EXHAUST FAN MUST OPERATE CONTINUOUSLY WHILE EXHAUSTING AIR AT 300°F (149°C) UNTIL ALL FAN PARTS HAVE REACHED THERMAL EQUILIBRIUM, AND WITHOUT ANY DETERIORATING EFFECTS TO THE FAN WHICH WOULD CAUSE UNSAFE OPERATION.

ABNORMAL FLARE-UP TEST
EXHAUST FAN MUST OPERATE CONTINUOUSLY WHILE EXHAUSTING BURNING GREASE VAPORS AT 600°F (316°C) FOR A PERIOD OF 15 MINUTES WITHOUT THE FAN BECOMING DAMAGED TO ANY EXTENT THAT COULD CAUSE AN UNSAFE CONDITION.

OPTIONS

- GREASE BDX.
- ECM WIRING PACKAGE - PWM SIGNAL FROM ECPM03 PREWIRE (TELCO MOTOR), CCW ROTATION.
- 2 YEAR PARTS WARRANTY.



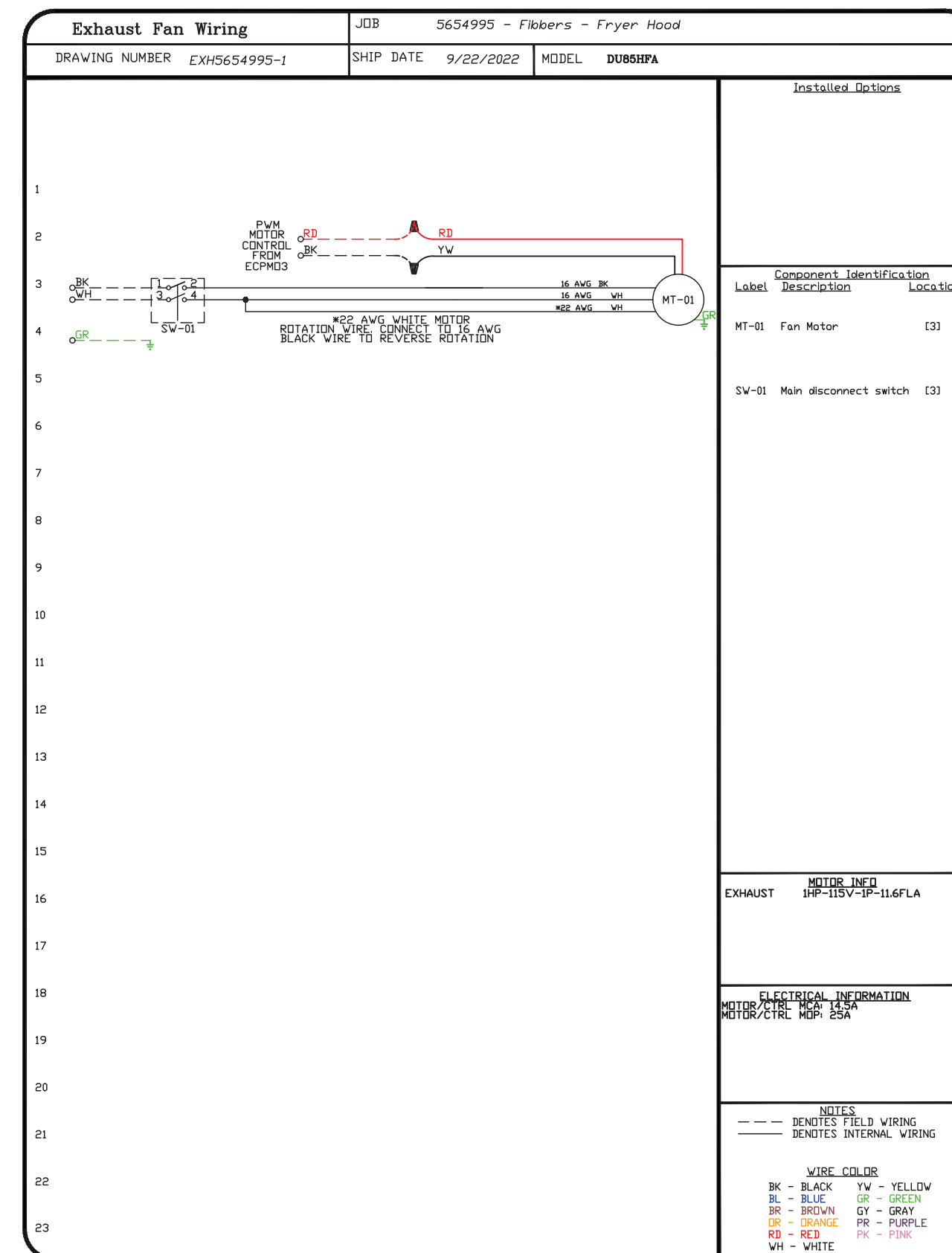
Building Safety Division
City of Sunnyvale

Aug 22 2023

For installation in the City of Sunnyvale subject to code requirements
By Daniel Reynolds
DIGITAL SET APPROVED

BUILDING-PLUMBING-ELECTRICAL-MECHANICAL
The stamping of this plan shall not be held to permit or to be an approval of the violation of any provision of any City or State Law.

JOB COPY
These plans must be kept on the job site at all times.
CITY OF SUNNYVALE



Reviewed for Code Compliance
08/21/2023
CSG CONSULTANTS, INC.

REVISIONS

DESCRIPTION	DATE

CAPTIVEAIRE

www.captiveaire.com

Northern California Office

1110 Burnett Ave, Suite G, Concord, CA, 94520 PHONE: (925) 962-1999 FAX: (925) 566-8666 EMAIL: reg92@captiveaire.com

Fibers - Fryer Hood

DATE: 9/22/2022

DWG.#: 5654995

DRAWN BY: MRE

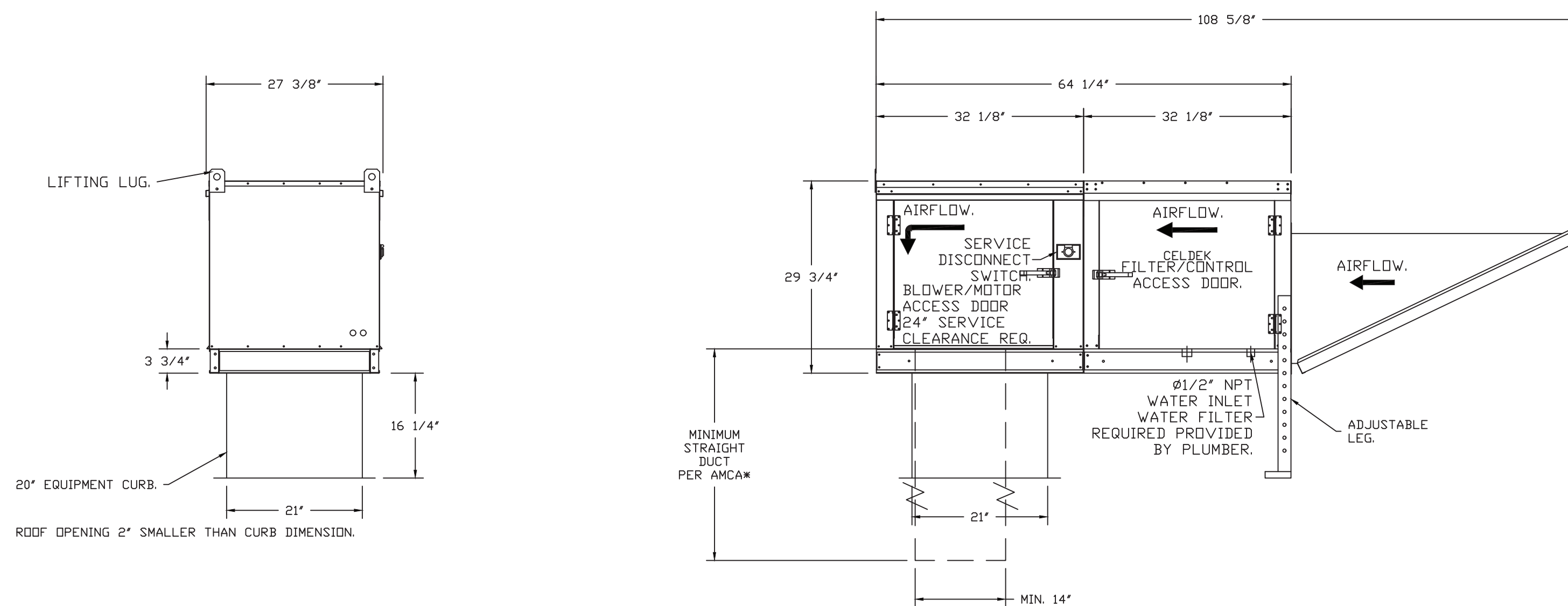
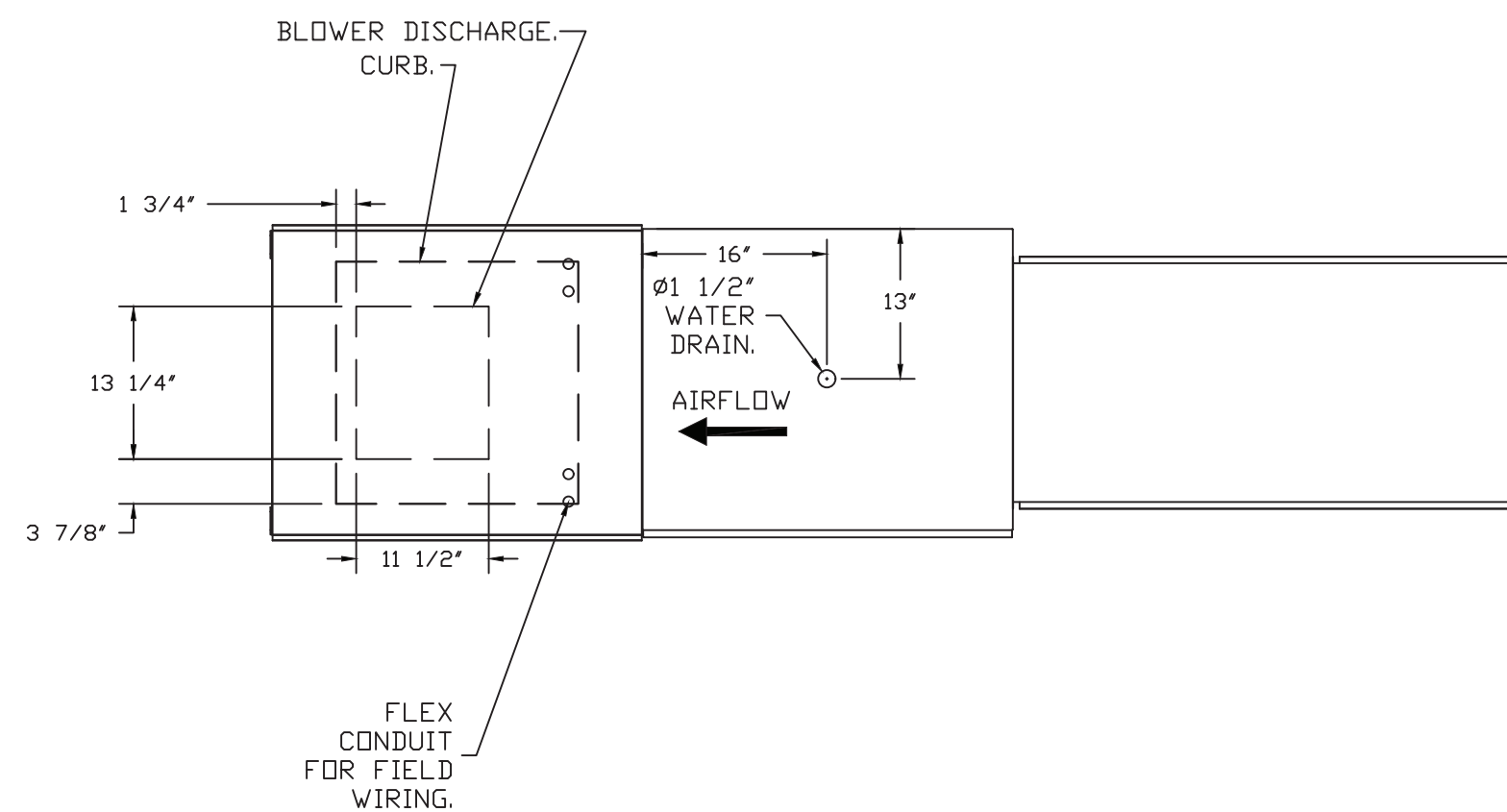
SCALE: 3/4" = 1'-0"

MASTER DRAWING

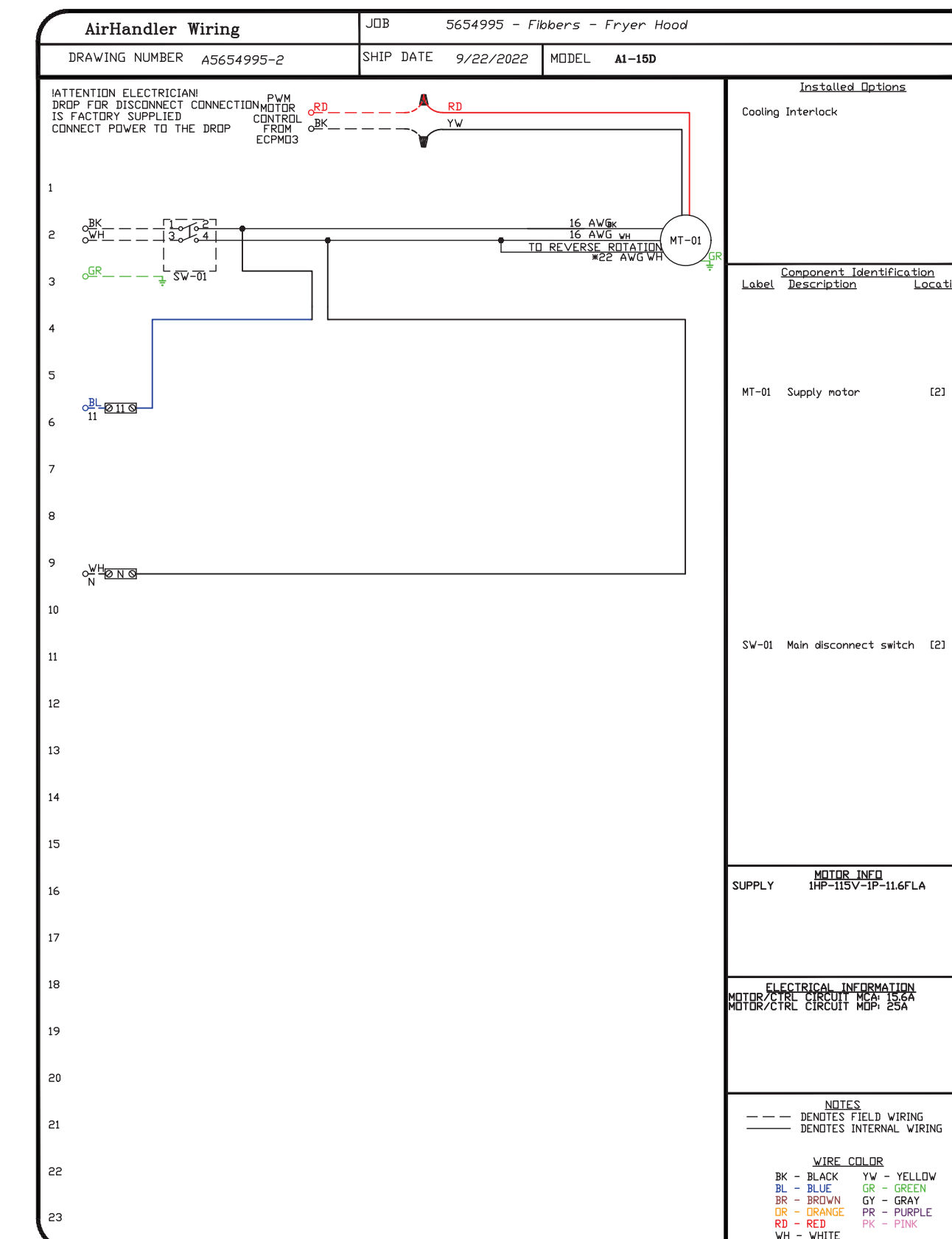
SHEET NO. 2

- FAN #2 A1-15D - SUPPLY FAN
1. UNTEMPERED SUPPLY UNIT WITH 15' MIXED FLOW DIRECT DRIVE FAN IN SIZE #1 HOUSING.
 2. EVAP COOLER (CELDEK) W/INTAKE HOOD W/EZ FILTERS.
 3. DOWN DISCHARGE - AIR FLOW RIGHT -> LEFT.
 4. DOWN DISCHARGE CONSTRUCTION FOR SIZE 1 UNTEMPERED DIRECT DRIVE AHUS.
 5. 120V WIRING CONNECTION TO ENERGIZE EVAPORATIVE COOLERS FROM UNTEMPERED SUPPLY FANS.
 6. ECM WIRING PACKAGE FOR SUPPLY MOTORS WITH PWM SIGNAL FROM ECM03 PREWIRE.
 7. HINGED DOUBLE WALL INSULATED DOOR ASSEMBLY (BURNER/BLOWER/EVAP SECTION).
 8. 2 YEAR PARTS WARRANTY

*NOTE: SUPPLY DUCT MUST BE INSTALLED TO MEET SMACNA STANDARDS. A MINIMUM STRAIGHT DUCT LENGTH MUST BE MAINTAINED DOWNSTREAM OF UNIT DISCHARGE AS OUTLINED IN AMCA PUBLICATION 201. WHEN USING RECTANGULAR DUCTWORK, ELBOWS MUST BE RADIUS THROAT, RADIUS BACK WITH TURNING VANES. FLEXIBLE DUCTWORK AND SQUARE THROAT/SQUARE BACK ELBOWS SHOULD NOT BE USED. ANY TRANSITION AND/OR TURNS IN THE DUCTWORK WILL CAUSE SYSTEM EFFECT. SYSTEM EFFECT WILL DRASTICALLY INCREASE STATIC PRESSURE AND REDUCE AIRFLOW. DO NOT RELY ON UNIT TO SUPPORT DUCT IN ANY WAY. FAILURE TO PROPERLY SIZE DUCTWORK MAY CAUSE SYSTEM EFFECTS AND REDUCE PERFORMANCE OF THE EQUIPMENT. SUGGESTED STRAIGHT DUCT SIZE IS 14" x 14".



Building Safety Division
City of Sunnyvale
Aug 22 2023
For installation in the City of Sunnyvale subject to code requirements
By Daniel Reynolds
BUILDING-PLUMBING-ELECTRICAL-MECHANICAL
The stamping of this plan shall not be held to permit or to be an approval of the violation of any provision of any City or State Law.
JOB COPY
These plans must be kept on the job site at all times.
CITY OF SUNNYVALE



Reviewed for Code Compliance
08/21/2023
CSG CONSULTANTS, INC.

REVISIONS	
DESCRIPTION	DATE

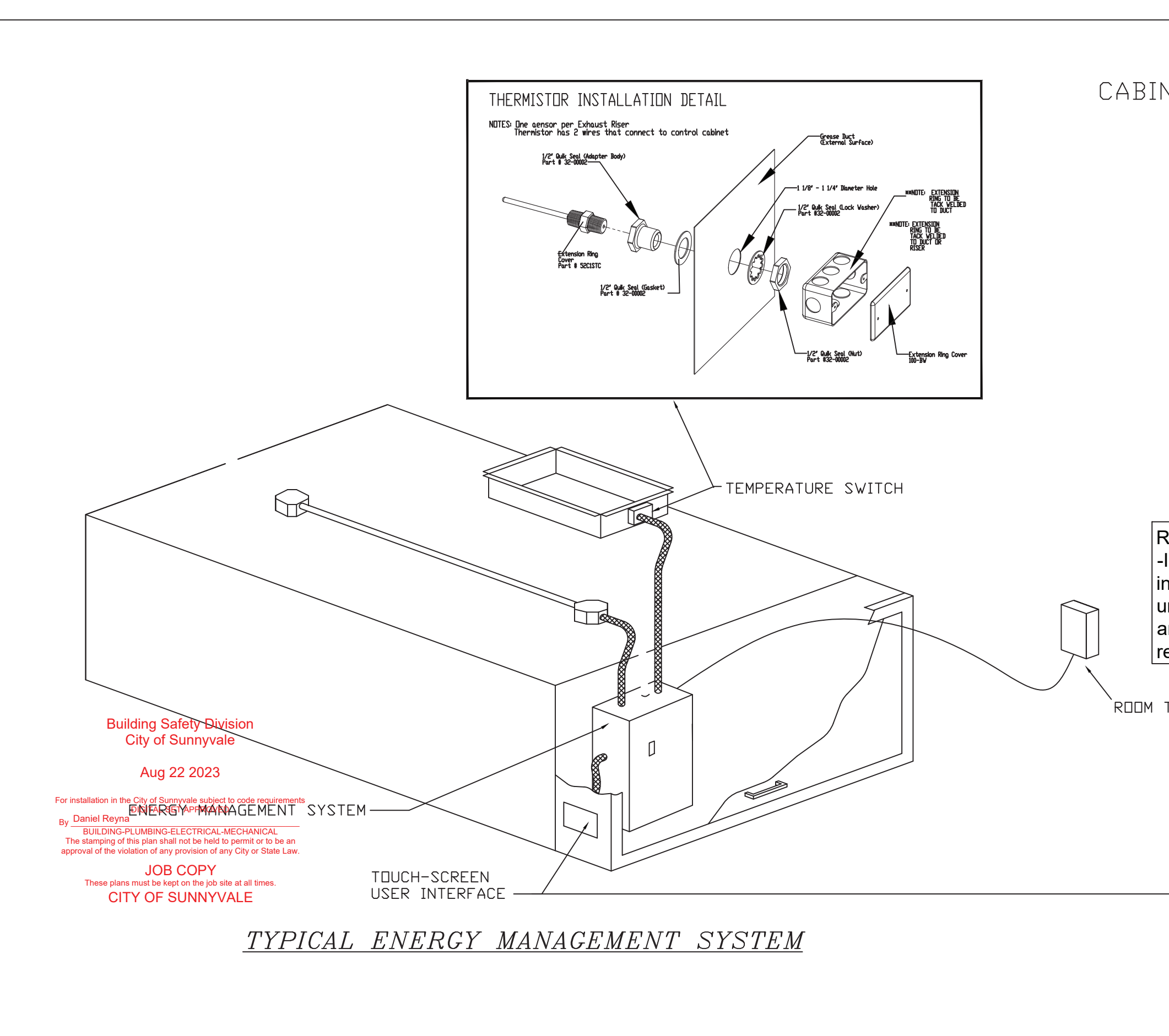
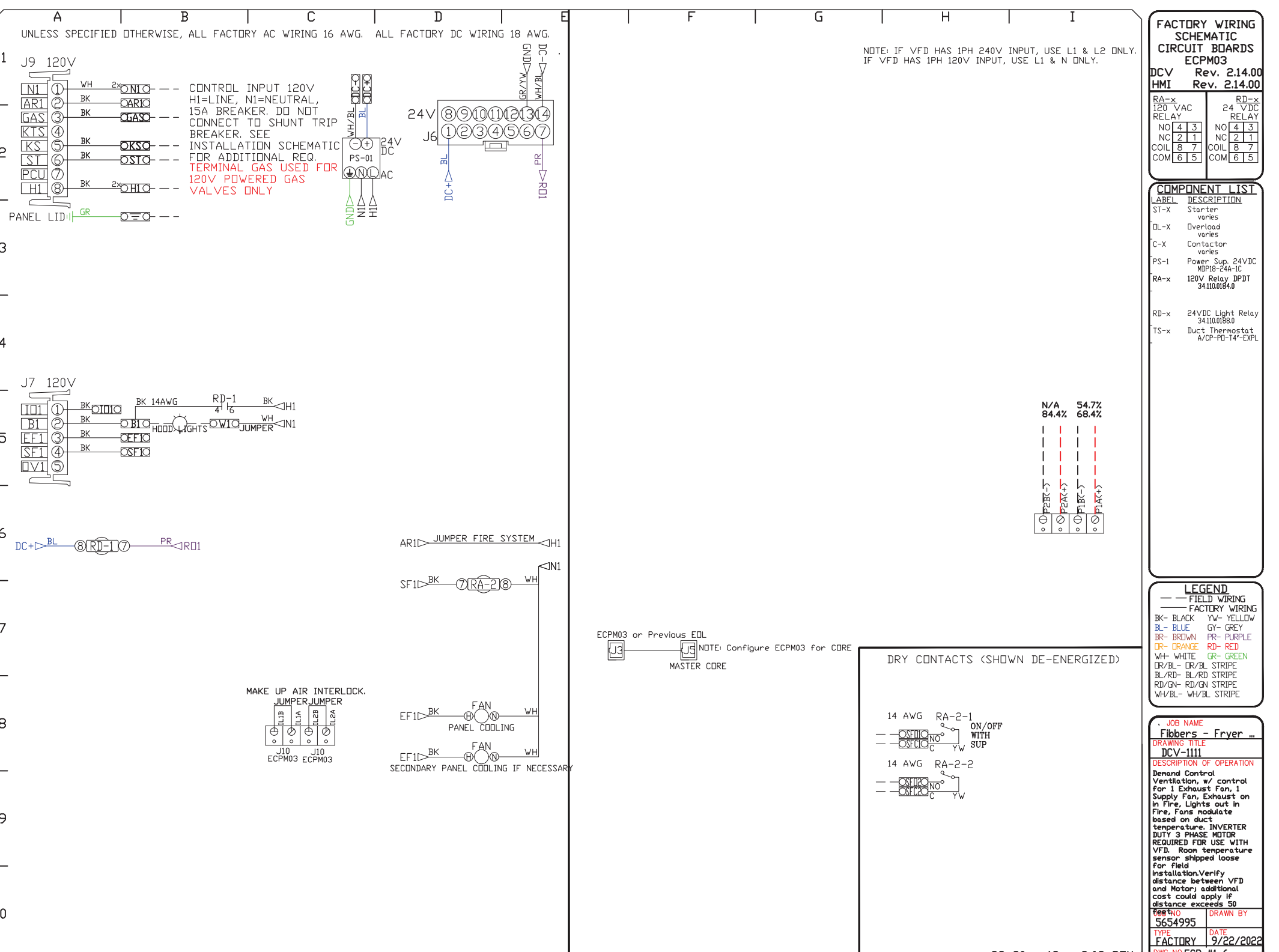
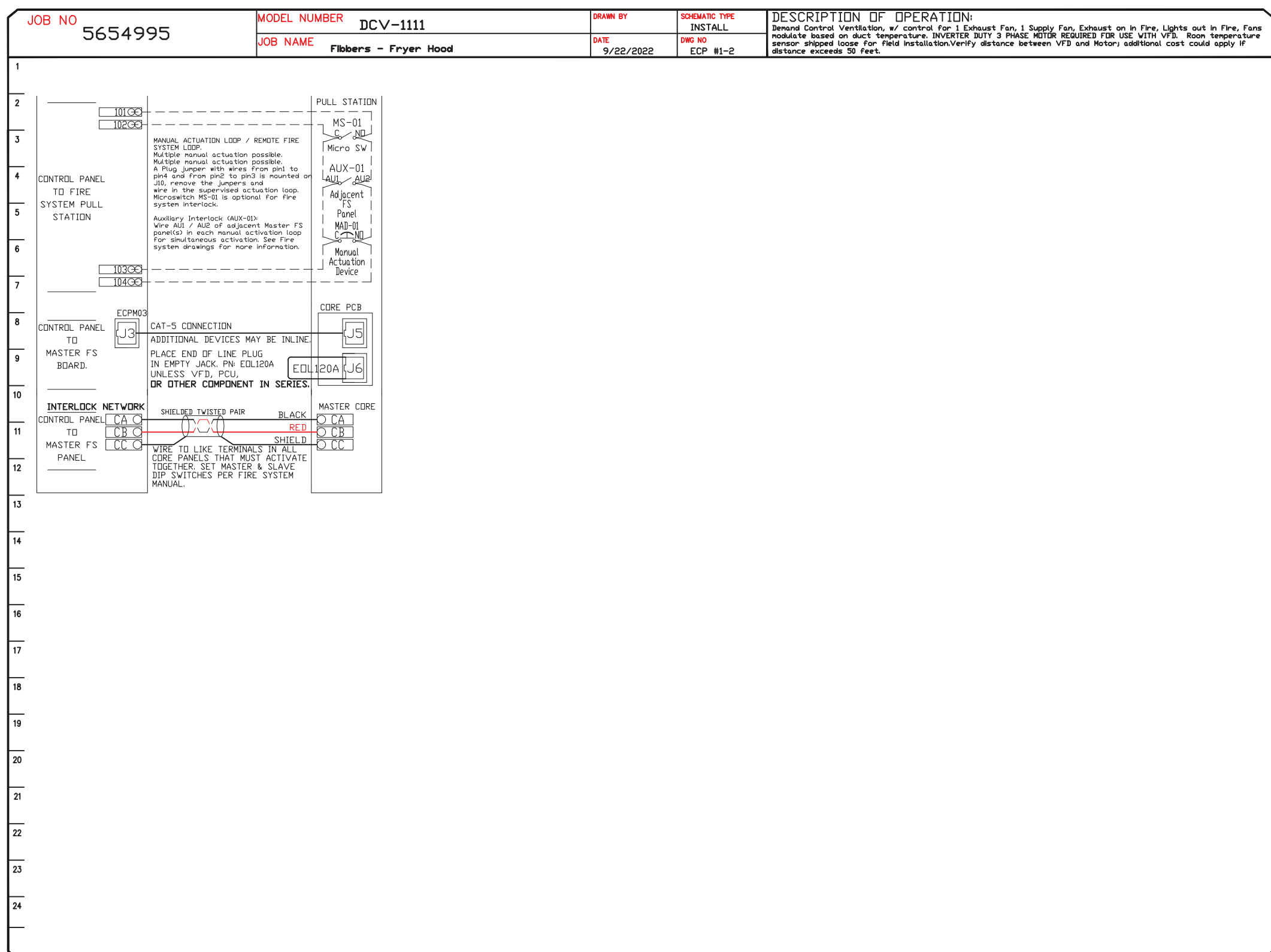
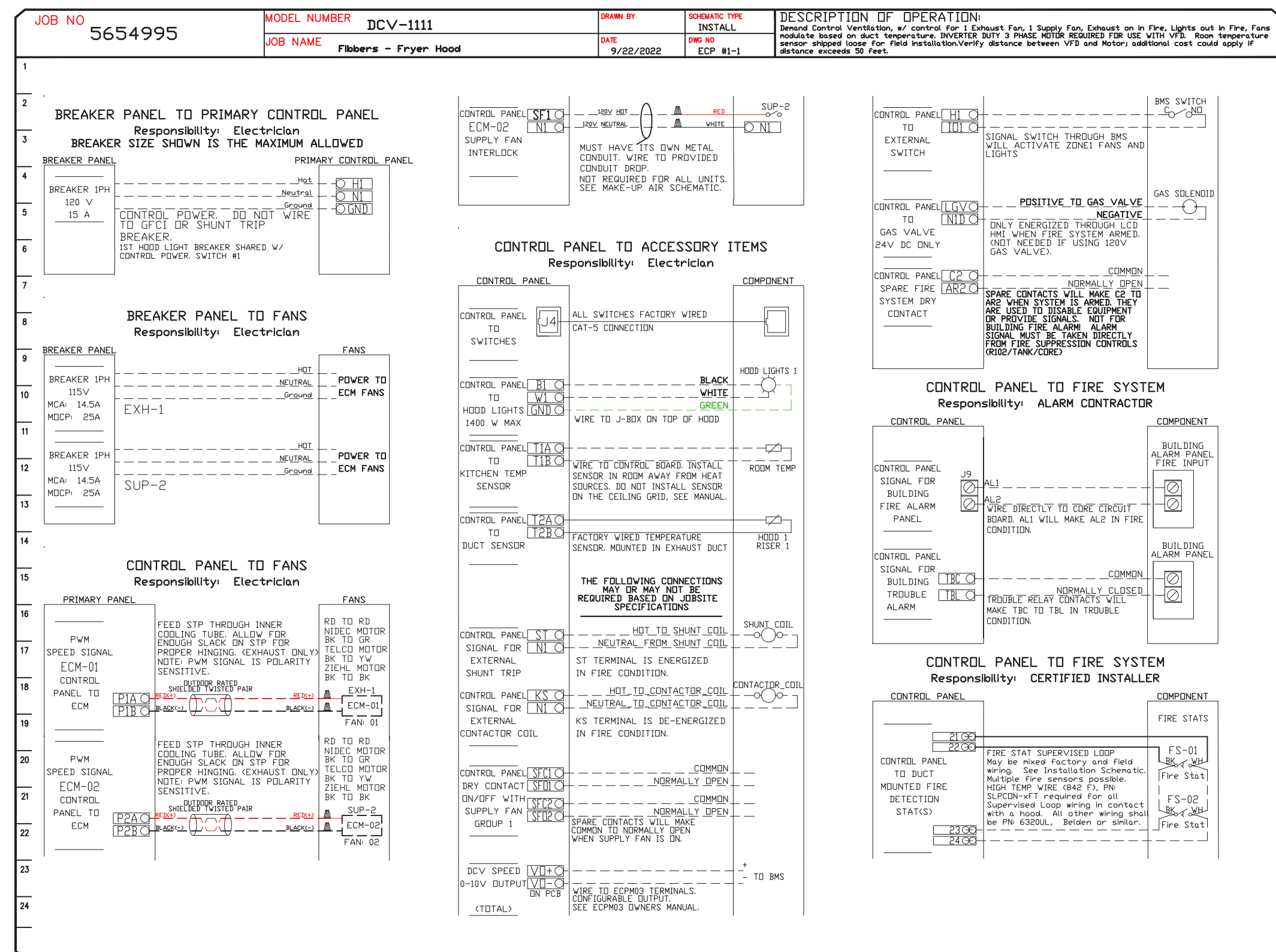
www.captiveaire.com
Northern California Office
1110 Burnett Ave, Suite G, Concord, CA, 94520 PHONE: (925) 962-1999 FAX: (925) 966-8666 EMAIL: reg9@captiveaire.com

Fibbers - Fryer Hood

DATE: 9/22/2022
DWG.#: 5654995
DRAWN BY: MRE
SCALE: 3/4" = 1'-0"
MASTER DRAWING
SHEET NO. 3

ELECTRICAL PACKAGE - JOB#5654995

NO	TAG	PACKAGE #	LOCATION	SWITCHES		OPTION	FANS CONTROLLED				
				LOCATION	QUANTITY		TYPE	Φ	HP	VOLT	FLA
1		DCV-1111	UTILITY CABINET RIGHT	04 - UTILITY CABINET RIGHT	1 LIGHT	SMART CONTROLS DCV	EXHAUST	1	1.000	115	11.6
				HOOD # 1	1 FAN		SUPPLY	1	1.000	115	11.6



REVISIONS

DESCRIPTION	DATE

www.captiveaire.com

CAPTIVEAIR

Northern California Office

1110 Burnett Ave, Suite G, Concord, CA, 94520 PHONE: (925) 962-1999 FAX: (925) 565-8565 EMAIL: reg@captivaire.com

Fibers - Fryer Hood

DATE: 9/22/2022

DWG.#: 5654995

DRAWN BY: MRE

SCALE: 3/4" = 1'-0"

MASTER DRAWING

SHEET NO. 4

