

SYMBOLS AND LEGEND

SYMBOL	ABBR.	DESCRIPTION
	φ	ROUND DUCT (SECTION)
	S.D.	SUPPLY AIR DUCT (SECTION)
	R.D.	RETURN AIR DUCT (SECTION)
	E.D.	EXHAUST AIR DUCT (SECTION)
	CBA	COMBUSTION AIR DUCT (SECTION)
	F	STACK/FLUE (SECTION)
	CSD/R	CEILING DIFFUSER/REGISTER
	CRD/R	CEILING RETURN GRILLE/REGISTER
	CER/G	CEILING EXHAUST REGISTER/GRILLE
	EF	CEILING EXHAUST FAN
	WSR	WALL SUPPLY REGISTER (WITH DAMPER)
	WRR/G	WALL RETURN REGISTER/GRILLE
	FC	FLEXIBLE CONNECTION
	FS	FIRE AND SMOKE DAMPER
	YD	BALANCE DAMPER OR VOLUME DAMPER
	T'STAT	ROOM THERMOSTAT
	B.D.	BACK DRAFT DAMPER
	AFF	ABOVE FINISHED FLOOR
	NTS	NOT TO SCALE
	N.I.C	NOT IN CONSTRUCTION
	(TYP.)	TYPICAL
	EF.	EXHAUST FAN
	AH	AIR HANDLING UNIT
	AG	AIR GRILLE
	EXH	EXHAUST
	DN	DOWN
	DG	DOOR GRILLE
	VD	MANUAL VOLUME DAMPER
	W/	WITH
	POC	POINT OF CONNECTIONS

GENERAL NOTES

- REFER TO THE SPECIFICATIONS FOR ADDITIONAL DETAILS AND CONTRACT REQUIREMENTS. COMPLY WITH THE LATEST ADDITIONS, UNLESS OTHERWISE NOTED, OF ALL FEDERAL, STATE AND LOCAL CODES AND REGULATIONS, THE CODES, REGULATIONS AND STANDARDS THOSE REFERENCED IN THE SPECIFICATIONS, AND THE FOLLOWING CODES STANDARDS AND REGULATIONS:
 TITLE 24, 2019 CBC IBC 2018, INCLUDING 2019 STATE OF CALIFORNIA AMENDMENTS
 TITLE 24, 2019 CEC NEC 2018, INCLUDING 2019 STATE OF CALIFORNIA AMENDMENTS
 TITLE 24, 2019 CMC UMC 2018, INCLUDING 2019 STATE OF CALIFORNIA AMENDMENTS
 TITLE 24, 2019 CPC UPC 2018, INCLUDING 2019 STATE OF CALIFORNIA AMENDMENTS
 TITLE 24, 2019 CFC IFC 2018, INCLUDING 2019 STATE OF CALIFORNIA AMENDMENTS
 TITLE 19 PUBLIC SAFETY DIVISION I, STATE FIRE MARSHAL REGULATIONS
 CAL/OSHA CODES, STANDARDS AND REGULATIONS
 ANSI/ASME B31.1 POWER PIPING CODE
- THE DOCUMENTS REFERENCED ON THE DRAWINGS ARE AN INTEGRAL PART OF THIS WORK AND ARE IN ADDITION TO THE NOTES CONTAINED ON THE DRAWINGS.
- FURNISHING OF ALL LABOR, MATERIALS AND SUPPLIES NECESSARY FOR THE CONSTRUCTION AND COMPLETION OF THE WORK SHOWN ON THE DRAWINGS AND SPECIFICATIONS IS THE RESPONSIBILITY OF THE CONTRACTOR UNLESS OTHERWISE NOTED.
- INSTALL ALL MATERIALS IN ACCORDANCE WITH THE DRAWINGS, SPECIFICATIONS, MANUFACTURER'S RECOMMENDATIONS, AND THE APPLICABLE CODES AND STANDARDS.
- ALL OMISSIONS OR CONFLICTS BETWEEN VARIOUS ELEMENTS OF THE DRAWINGS SHALL BE BROUGHT TO THE ATTENTION OF THE OWNER'S REPRESENTATIVE BEFORE PROCEEDING WITH ANY OTHER WORK.
- VERIFY ALL DIMENSIONS AND EXISTING CONDITIONS, WHETHER OR NOT SHOWN ON THE DRAWINGS OR REFERENCED IN THE SPECIFICATIONS, PRIOR TO COMMENCEMENT OF WORK. DRAWINGS ARE BASED ON TYPICAL MANUFACTURER SUPPLIED EQUIPMENT AND CONFIGURATIONS. VERIFY CONCURRENCE OF ACTUAL MANUFACTURER EQUIPMENT WITH THAT REPRESENTED IN THE DRAWINGS. OBTAIN APPROVAL FROM THE OWNER PRIOR TO MAKING ANY REQUIRED CHANGES.
- PROVIDE AND INSTALL ALL EQUIPMENT, PIPING AND INSTRUMENTS IN ACCORDANCE WITH MANUFACTURER'S RECOMMENDATIONS. WHERE THOSE RECOMMENDATIONS DIFFER FROM THE DRAWINGS, OBTAIN CLARIFICATION FROM THE OWNER.
- INTERRUPTION OF ANY OF EXISTING UTILITY AND SERVICES INCLUDED, POWER, WATER, CONTROL AND ECT. ARE NOT PERMITTED UNLESS REQUESTED FOUR WEEKS IN ADVANCE.
- ALL WORK IS NEW UNLESS OTHERWISE NOTED.
- CONTRACTOR SHALL PROVIDE ALL MATERIALS AND OTHER ITEMS AS REQUIRED AND NECESSARY FOR A COMPLETE AND FUNCTIONAL CHILLED AND HOT WATER PIPING SYSTEM OF THIS PROJECT.
- ALL DUCT SIZES ARE INSIDE CLEAR DIMENSIONS.
- THE MECHANICAL CONTRACTOR SHALL VERIFY ALL SECTIONS AND ELEVATIONS PRIOR TO DUCTWORK FABRICATIONS.
- THE MECHANICAL CONTRACTOR SHALL COORDINATE ALL AIR TERMINALS WITH REFLECTED CEILING PLAN AND ALL DUCTWORK LOCATIONS WITH WORK OF OTHER TRADES BEFORE PROCEEDING WITH FABRICATION.
- THE MECHANICAL CONTRACTOR SHALL COORDINATE WITH GENERAL CONTRACTOR FOR ACCESS TO ALL DAMPERS AND EQUIPMENT.
- THE MECHANICAL CONTRACTOR MAY USE (1) SIZE LARGER ROUND DUCT WHERE ODD SIZE ROUND IS INDICATED AND WHERE SPACE PERMITS.
- THE MECHANICAL CONTRACTOR SHALL COORDINATE WITH THE GENERAL CONTRACTOR ALL EQUIPMENT PLATFORM AND CURB LOCATIONS.
- INSTALL MANUAL VOLUME DAMPER AT EACH DIFFUSER BRANCH AS INDICATED ON DRAWINGS AND AS FAR FROM THE DIFFUSER AS POSSIBLE.
- THE CONTRACTOR MAY USE EQUIVALENT SIZE RECTANGULAR DUCT WHERE PREFERRED OF WHERE SPACE IS LIMITED AND IN CONCEALED AREAS ONLY.
- THE MECHANICAL CONTRACTOR MAY USE FLEXIBLE DUCT AT LAST 4 FEET OF RUN TO THE AIR TERMINAL IN CONCEALED AREAS ONLY.
- ALL ROOF AND EXTERIOR WALL PENETRATIONS SHALL BE FLASHED AND COUNTER FLASHED AS REQUIRED TO SEAL WEATHERTIGHT.
- MECHANICAL CONTRACTOR SHALL PROVIDE BIRD SCREENS AT ALL INTAKE AND EXHAUST OPENINGS.
- ALL VISIBLE INTERIOR PORTIONS OF DUCTWORK AND AIR TERMINALS SHALL BE PAINTED FLAT BLACK BY MECHANICAL CONTRACTOR.
- ALL SUPPLY, RETURN, AND EXHAUST TERMINALS SHALL HAVE INTEGRAL VOLUME CONTROL UNLESS OTHERWISE INDICATED.
- ALL LOW VOLTAGE SHALL BE FURNISHED AND INSTALLED BY MECHANICAL CONTRACTOR.
- ALL LOW VOLTAGE WIRING SHALL BE ENCLOSED IN CONDUIT OR EMT.
- MECHANICAL CONTRACTOR SHALL BALANCE SYSTEM TO WITHIN +/- 5% OF THE AIR QUANTITIES SHOWN.
- ALL EXPOSED DUCTWORK SHALL HAVE ITS JOINTS SEALED INTERNALLY WITH AIR TIGHT MASTIC.
- ALL EXPOSED ROUND DUCTWORK SHALL BE SPIRAL ROUND.
- EXPOSED DUCTWORK SHALL BE PRIMERED AND READY FOR PAINTING. SEE ARCHITECTURAL DRAWINGS.
- ALL CEILING DIFFUSERS, SUPPLY REGISTER, RETURN REGISTERS AND EXHAUST GRILLS SHALL BE INSTALLED WITH TAMPER PROOF SCREWS.
- THE MECHANICAL CONTRACTOR SHALL COORDINATE WITH THE GENERAL CONTRACTOR FOR ACCESS TO ALL VALVES AND EQUIPMENT.
- HVAC CONTRACTOR IS TO REPORT TO THE OWNER'S ENGINEER ANY OBSERVATIONS OR CONDITIONS WHICH ARE DISCOVERED IN THE BUILDING WHICH WOULD PREVENT THE CORRECT INSTALLATION OF THE HVAC SYSTEM.
- EACH EXHAUST FAN SHALL BE EQUIPPED WITH A BACK-DRAFT DAMPER.
- A MAINTENANCE LABEL MUST BE AFFIXED TO MECHANICAL EQUIPMENT. TWO COPIES OF A MAINTENANCE MANUAL FOR THE EQUIPMENT ITEMS SHALL BE PROVIDED TO THE OWNER BY THE CONTRACTOR.
- LAYOUT OF THE EQUIPMENT AND WORK IS GENERALLY DIAGRAMMATIC, UNLESS SPECIFICALLY DIMENSIONED. DRAWINGS AND DETAILS SHALL BE CHECKED FOR INTERFERENCE BEFORE INSTALLING THE WORK. ANY INTERFERENCE NOTED BETWEEN DIFFERENT DRAWINGS, AND BETWEEN DRAWINGS AND ACTUAL FIELD CONDITIONS SHALL BE BROUGHT TO THE ATTENTION FOR A DECISION. THERE SHALL BE NO ADDITIONAL COMPENSATION FOR INTERFERING WORK THAT WAS PERFORMED PRIOR TO CHECKING INTERFERENCE AND FIELD CONDITIONS. THE RIGHT IS RESERVED TO MAKE ANY REASONABLE CHANGE IN LOCATION OF EQUIPMENT WITHOUT INVOLVING ADDITIONAL EXPENSE TO THE OWNER.
- THE CONTRACTOR SHALL COORDINATE THE DUCTWORK WITH BUILDING STRUCTURAL ELEMENTS AND CEILING.
- MATERIAL OF THE METAL DUCTS SHALL COMPLY WITH CMC SECTION 602.5.
- FACTORY MADE AIR DUCTS, IF USED, SHALL BE CLASS 1 OR 0 LISTED DUCT PER CMC SECTION 604.3.
- APPROVED LINING MATERIALS, INSTALLED WITHIN DUCTS AND PLENUMS SHALL HAVE AMOLD, HUMIDITY AND EROSION RESISTANT SURFACE TO MEET TED REQUIREMENTS OF THE CMC CHAPTER 17 AND CMC SECTION 605.0.
- FLAME SPREAD INDEX OF THE DUCT LINING MATERIALS WITH IN DUCTS AND PLENUMS SHALL NOT BE MORE THAN 25 AND SMOKE DEVELOPMENT RATING OF NOT MORE THAN 50 PER CMC SECTION 602.2.
- FLAME SPREAD INDEX OF THE INSULATION MATERIALS APPLIED TO THE EXTERIOR OF THE DUCTS NOT BE MORE THAN 25 AND SMOKE DEVELOPMENT RATING OF NOT MORE THAN 50 PER CMC SECTION 602.2.
- TERMINATION OF ALL ENVIRONMENTAL AIR DUCTS SHALL BE A MINIMUM OF 3 FEET FROM ANY OPENINGS INTO THE BUILDING (I.E. DRYERS, BATH AND UTILITY FANS, ETC., MUST BE 3 FEET AWAY FROM DOORS, WINDOWS, OPENING SKYLIGHTS OR ATTIC VENTS). CMC 504.5.
- ALL OF THE HEATING VENTILATION AND AIR CONDITION SYSTEMS SHALL HAVE MERV 13 FILTERS.
- DUCT INSULATION SHALL BE PER LATEST T-24 REQUIREMENTS.
- FOR PENETRATIONS OF THE GARAGE WALL, ADD A NOTE FOR ALL DUCTING TO BE A MINIMUM OF 26GAGE SHEET METAL APPROVED DUCTING WITH NO-OPENINGS IN THE GARAGE PER SECTION R302.5.2 CRC.
- ALL FANS SHALL BE ENERGY STAR COMPLIANT, WITH HUMIDITY CONTROL ADJUSTING FROM 50%-80%.

MARK	SERVICE	LOCATION	MFR	MODEL	CFM	S.P.	RPM	TYPE	ELECTRICAL			OPER. WT. LBS	REMARKS
									WATS	HP	VOLTS ∅		
EF-1	TOILET A MEN	ATTIC	PANASONIC	FV-40NLF1	440	0.5		INLINE	150	120	1	25	SEE NOTES
EF-2	TOILET B WOMAN	ATTIC	PANASONIC	FV-40NLF1	440	0.5		INLINE	150	120	1	25	SEE NOTES

NOTES:

- BACK DRAFT DAMPER.
- CEILING GRILLE.
- EXHAUST DUCT
- FAN ON/OFF SWITCH W/VARIABLE SPEED CONTROLLER
- INSTALL PER MANUFACTURER'S RECOMMENDATION
- DISCONNECT SWITCH
- TOTALLY INCLOSED MOTOR

MARK	SERVICE	MFR	MODEL NO.	FRAME	FRAM SIZE	NECK SIZE	CFM RANGE	TYPE	REMARKS
CSD-1	SUPPLY	TITUS	PAS	STEEL	24"x24"	6"φ	0-100	CEILING DIFFUSER LAY-IN	OPPOSITE BLADE VOLUME DAMPER
CSD-2	SUPPLY	TITUS	PAS	STEEL	24"x24"	8"φ	100-170	CEILING DIFFUSER LAY-IN	OPPOSITE BLADE VOLUME DAMPER
CSD-3	SUPPLY	TITUS	PAS	STEEL	24"x24"	10"φ	170-270	CEILING DIFFUSER LAY-IN	OPPOSITE BLADE VOLUME DAMPER
CSD-4	SUPPLY	TITUS	PAS	STEEL	24"x24"	12"φ	270-400	CEILING DIFFUSER LAY-IN	OPPOSITE BLADE VOLUME DAMPER
CSD-5	SUPPLY	TITUS	PAS	STEEL	24"x24"	14"φ	400-600	CEILING DIFFUSER SURFACE MOUNTED	OPPOSITE BLADE VOLUME DAMPER
CSD-6	SUPPLY	TITUS	PAS	STEEL	24"x24"	16"φ	600-700	CEILING DIFFUSER SURFACE MOUNTED	OPPOSITE BLADE VOLUME DAMPER
CSD-7	SUPPLY	TITUS	PAS	STEEL	24"x24"	18"φ	700-800	CEILING DIFFUSER SURFACE MOUNTED	OPPOSITE BLADE VOLUME DAMPER
CEG/CRG-1	EXHAUST/RETURN	TITUS	PAR	STEEL	24"x24"	6"φ	0-100	CEILING RETURN GRILLE SURFACE MOUNTED	
CEG/CRG-2	EXHAUST/RETURN	TITUS	PAR	STEEL	24"x24"	8"φ	100-170	CEILING RETURN GRILLE SURFACE MOUNTED	
CEG/CRG-3	EXHAUST/RETURN	TITUS	PAR	STEEL	24"x24"	10"φ	170-270	CEILING RETURN GRILLE SURFACE MOUNTED	
CEG/CRG-4	EXHAUST/RETURN	TITUS	PAR	STEEL	24"x24"	12"φ	270-400	CEILING RETURN GRILLE SURFACE MOUNTED	
CEG/CRG-5	EXHAUST/RETURN	TITUS	PAR	STEEL	24"x24"	14"φ	400-500	CEILING RETURN GRILLE SURFACE MOUNTED	
CEG/CRG-6	EXHAUST/RETURN	TITUS	PAR	STEEL	24"x24"	16"φ	500-800	CEILING RETURN GRILLE SURFACE MOUNTED	
CEG/CRG-7	EXHAUST/RETURN	TITUS	PAR	STEEL	24"x24"	18"x18"	800-1100	CEILING RETURN GRILLE SURFACE MOUNTED	
CEG/CRG-8	EXHAUST/RETURN	TITUS	350	STEEL	24"x48"	18"x18"	2200-3000	CEILING RETURN GRILLE SURFACE MOUNTED	
CEG/CRG-9	EXHAUST/RETURN	TITUS	PAR	STEEL	24"x24"	22"x22"	1300-1800	CEILING RETURN GRILLE SURFACE MOUNTED	

DRAWING LIST

- M0-1 SYMBOLS, LEGEND AND GENERAL NOTES
- M0-2 EQUIPMENT SCHEDULES
- M1-1 FLOOR PLAN - HVAC
- M2-1 ROOF PLAN - HVAC
- M3-1 DETAILS
- M3-2 DETAILS
- M3-3 DETAILS
- M3-4 DETAILS

Building Safety Division
City of Sunnyvale
Aug 22 2023

For installation in the City of Sunnyvale subject to code requirements
DIGITAL SET APPROVED
By: Daniel Reyes
BUILDING/PLUMBING/ELECTRICAL/MECHANICAL
The stamping of this plan shall not be held to permit to be an approval of the violation of any provision of any City or State Law.

JOB COPY
These plans must be kept on the job site at all times.
CITY OF SUNNYVALE

Reviewed for Code Compliance
08/21/2023
CSG CONSULTANTS, INC.

I & A ENGINEERING
1610 BLOSSOM HILL ROAD, SUITE "6A"
SAN JOSE, CALIFORNIA 95124
TEL: (408) 268-9337
FAX: (408) 268-1135



DRAWINGS NOT FOR CONSTRUCTION UNTIL STAMPED JOB COPY BY BUILDING DEPARTMENT. ALL DRAWINGS AND WRITTEN MATERIAL APPEARING HEREIN CONSTITUTE ORIGINAL AND UNPUBLISHED WORK OF THE ENGINEER AND MAY NOT BE DUPLICATED, USED, OR DISCLOSED WITHOUT WRITTEN CONSENT OF THE ENGINEER.

152 AND 156 S. MURPHY AVE. AND 159 S. SUNNYVALE AVE. SUNNYVALE, CA 94086

FIBBAR MAGEE'S RENOVATION
SYMBOLS AND LEGENDS, AND GENERAL NOTES

PROJECT:

DRAWING TITLE:

REV	DATE	DESCRIPTION
△	4/26/23	PLAN CHECK COMMENTS
△	6/1/23	PLAN CHECK COMMENTS
△		
△		
△		
△		

JOB NO.:	22-121
DSGN'D BY:	I. R.
DRAWN BY:	H. N.
CHK'D BY:	I. R.
APP'D BY:	I. R.
DATE:	09/14/22
SCALE:	AS NOTED

DRAWING NO.:

M0-1

SHEET * OF *

ROOF TOP UNIT SCHEDULE (RTU)																												
TAG	SERVICE	MAKE	MODEL NUMBER	Fan Data						Cooling Performance							Heating Performance						Electrical Data					
				NOM TONS	ACFM	SCFM	ESP(IN.WC)	TESP(IN.WC)	ELEVATION (FT)	TOTAL CAPACITY (BTU/hr)	SENSIBLE CAPACITY (BTU/hr)	EFFICIENCY (AT AHRI)	EDB (°F)	EWB (°F)	LDB (°F)	LWB (°F)	INPUT (BTU/h)	OUTPUT (BTU/h)	EFFICIENCY	EH KW	EAT (°F)	LAT (°F)	VOLT/PH	INDOOR MOTOR HP	Unit MCA	Unit MOC	WEIGHT (LB)	NOTES
RTU-1	KITCHEN	DAIKIN	DRG1023LH0001C	8.5	3537	3537	0.7	0.85	0	103876	77208	17 IEER/ 12.2 EER	80	67	60.1	57.7	225000	182250	81% TE	-	55	102.1°F	208-230/3/60	3.50	47.5/47.5	60/60	1,400	1,2,3,5,7,8,9

NOTES:

- 1.PROVIDE FACTORY INSTALLED TWO STAGE COOLING MODES
- 2.PROVIDE FACTORY INSTALLED STANDARD ALUMINIZED EXCHANGER
- 3.PROVIDE FACTORY INSTALLED ELECTRO-MECHANICAL CONTROLS
- 4.PROVIDE FIELD INSTALLED 25% MOTORIZED FRESH AIR DAMPER
- 5.PROVIDE FIELD INSTALLED 14" ROOF CURB
- 6.PROVIDE FIELD INSTALLED SMOKE DETECTOR- DUCT MOUNTED
- 7.PROVIDE FIELD INSTALLED FILTRATION-MERV13
- 8.PROVIDE FIELD INSTALLED 4H/2C COMMERCIAL 7DAY PROGRAMMABLE WI-FI CAPABLE HUM/DEHUM THERMOSTAT
- 9.PROVIDE FIELD INSTALLED ULTRA LOW-LEAK DOWNFLOW ECONOMIZER W/ DRY BULB SENSOR

BLE REFRIGERANT VOLUME - INDOOR UNIT SCHEDULE

ROOM	BASIS OF DESIGN (DAIKIN)	NOMINAL TONNAGE	TYPE	CONNECTED TO:		SUPPLY FAN AIR FLOW RATE dm H/L	COOLING CAPACITY		HEATING CAPACITY		ELECTRICAL			DIMENSIONS		WEIGHT	NOTES	Options and Accessories
				CONDENSING UNIT	ZONE CHANGEOVER DEVICE		TOTAL BTU/h	SENSIBLE BTU/h	TOTAL BTU/h	ENTERING AIR *Fdb	POWER SUPPLY Voltage - Phase	Min Circuit Amps MCA	Max Overcurrent Protection MOP	WxHxD inch	Net lbs			
DINING AREA	FXFQ30TVJU	2.5	4-Way Discharge Ceiling Cassette (3' x 3')	CU 1		1,112/671	30,000	22,300	80	67	34,000	70	208-230-1ph	1.3	15	33-1/16x11-5/16x33-1/16	58	ref pipe 3/8x5/8
DINING AREA	FXFQ30TVJU	2.5	4-Way Discharge Ceiling Cassette (3' x 3')	CU 1		1,112/671	30,000	22,300	80	67	34,000	70	208-230-1ph	1.3	15	33-1/16x11-5/16x33-1/16	58	ref pipe 3/8x5/8

VARIABLE REFRIGERANT VOLUME - AIR-COOLED CONDENSING UNIT SCHEDULE

TAG: ROOM	BASIS OF DESIGN (DAIKIN)	NOMINAL TONNAGE	DESCRIPTION	COOLING CAPACITY		HEATING CAPACITY		REFRIGERANT CHARGE		CONNECTION RATIO (%)	VOLTAGE-PHASE	ELECTRICAL						DIMENSIONS		EFFICIENCY (NonDucted/Ducted or Specific Combo)						NOTES	Options and Accessories					
				BTU/h	AMBIENT DESIGN (°F DB)	BTU/h	AMBIENT DESIGN (°F DB / WB)	Factory Charge (lbs)	Add'l Refrigerant (lbs)			MIN CIRCUIT AMPS (MCA)			MAX OVERCURRENT PROTECTION (MOP)			RUNNING CURRENT(RLA)			WxHxD (inch)	WEIGHT (lbs)	EER	IEER	COP47			COP17	SCHE	SEER	HSPF	
												mod #1	mod #2	mod #3	total	mod #1	mod #2	mod #3	total	mod #1												mod #2
CU 1	RXTQ60TAVJUA	5	Air cooled heat pump (1) 62,142	84.2		58,196	38.0 / 36.5	7.9	n/a	116.7	208-230V 1ph	29.1		29.1	35.0		35.0	23.2	23.2	23.2	35.4 x 53.0 x 12.6	224.9	9.8 / 9.2	n/a / n/a	n/a / n/a	n/a / n/a	n/a / n/a	n/a	18 / 16	10.5 / 10.5		

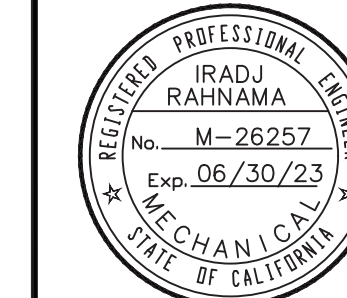
Schedule Notes:

- Manufacturer must be certified, listed, and labeled per AHRI 1230.
- System rating data based on design ambient conditions for cooling and for heating.
- Submitted performance data must be fully de-rated for all components and accessories, including but not limited to, line length, vertical separation, connection ratio, design conditions, condenser coil coating.
- Condensing units must have fully modulating INVERTER compressors.
- Condensing units must have auto changeover functions.
- Demand limiting relay contact must be provided.
- EEV actuators must be removable from valve body without disturbing the refrigerant system.
- FCU thermostats must provide +/- 1 degree dead-band set-point and control capability.
- System shall be provided with i-Touch Manager controller with WEB based software for displaying up to 8 DIII-Net systems with 128 indoor units per system.PC by others.
- Manufacturers submittal must include refrigerant piping diagram with pipe diameters, lengths, and refrigerant volume.
- Substitute manufacturer shall be responsible for additional piping and refrigerant.
- Contractor to verify piping dimensions.
- Installing contractor must have successfully completed manufacturers certified installation class within past 36 months.
- Contractor to furnish and install insulation on refrigerant piping.
- Manufacturers Representative must have local stock of parts and factory certified technician on staff.
- Manufacturers Representative shall provide proof of ongoing installation training at their local facility for at least the past 5 years.
- Manufacturers Representative shall provide proof of continuous sales and support of their products for at least 15 years.
- Mechanical contractor shall be responsible for all direct costs and operating costs increases for 20 years associated with any deviations resulting from changes in design.
- Manufacturer must provide 10 years parts warranty on all FCUs, Condensing Units, and Mode Changeover Devices. Warranty conditions must be clarified during submittal phase.
- 3-phase Air cooled condensing units must have published performance data with 200% indoor connected capacity.
- Condensing units must be furnished with protective coil coating to withstand ASTM B117 salt spray test for a minimum of 1000 hours.Performance of system must be de-rated for coil coating.
- Manufacturer must certify and submit system performance at extreme conditions of 122 degrees FDB ambient in cooling mode and -4 degrees FWB in heating mode.

Reviewed for Code Compliance
08/21/2023
CSG CONSULTANTS, INC.

Building Safety Division
City of Sunnyvale
Aug 22 2023
For installation in the City of Sunnyvale subject to code requirements
DIGITAL SET APPROVED
By: Darin Reynolds
BUILDING/PLUMBING/ELECTRICAL/MECHANICAL
The stamping of this plan shall not be held to be an approval of the violation of any provision of any City or State Law.
JOB COPY
These plans must be kept on the job site at all times.
CITY OF SUNNYVALE

I & A ENGINEERING
1610 BLOSSOM HILL ROAD, SUITE "6A"
SAN JOSE, CALIFORNIA 95124
TEL: (408) 268-9337
FAX: (408) 268-1135



DRAWINGS NOT FOR CONSTRUCTION UNTIL STAMPED JOB COPY BY BUILDING DEPARTMENT. ALL DRAWINGS AND WRITTEN MATERIALS APPEARING HEREIN CONSTITUTE ORIGINAL AND UNPUBLISHED WORK OF THE ENGINEER AND MAY NOT BE DUPLICATED, USED, OR DISCLOSED WITHOUT WRITTEN CONSENT OF THE ENGINEER.

152 AND 156 S. MURPHY AVE. AND 159 S. SUNNYVALE AVE. SUNNYVALE, CA 94086

PROJECT: FIBBAR MAGEE'S RENOVATION
DRAWING TITLE: EQUIPMENT SCHEDULE

REV	DATE	DESCRIPTION
1	4/26/23	PLAN CHECK COMMENTS
2	6/1/23	PLAN CHECK COMMENTS
3		
4		
5		
6		
7		

JOB NO.: 22-121
CAD FILE:
DSGN'D BY: I. R. DRAWN BY: H. N.
CHK'D BY: I. R. APP'D BY: I. R.
DATE: 09/14/22 SCALE: AS NOTED

DRAWING NO.:
MO-2
SHEET * OF *



DRAWINGS NOT FOR CONSTRUCTION UNTIL STAMPED JOB COPY BY BUILDING DEPARTMENT. ALL DRAWINGS AND WRITTEN MATERIAL APPEARING HEREIN CONSTITUTE ORIGINAL AND UNPUBLISHED WORK OF THE ENGINEER AND MAY NOT BE REPRODUCED, COPIED, OR DISCLOSED WITHOUT WRITTEN CONSENT OF THE ENGINEER.

152 AND 156 S. MURPHY AVE. AND 159 S. SUNNYVALE AVE. SUNNYVALE, CA 94086

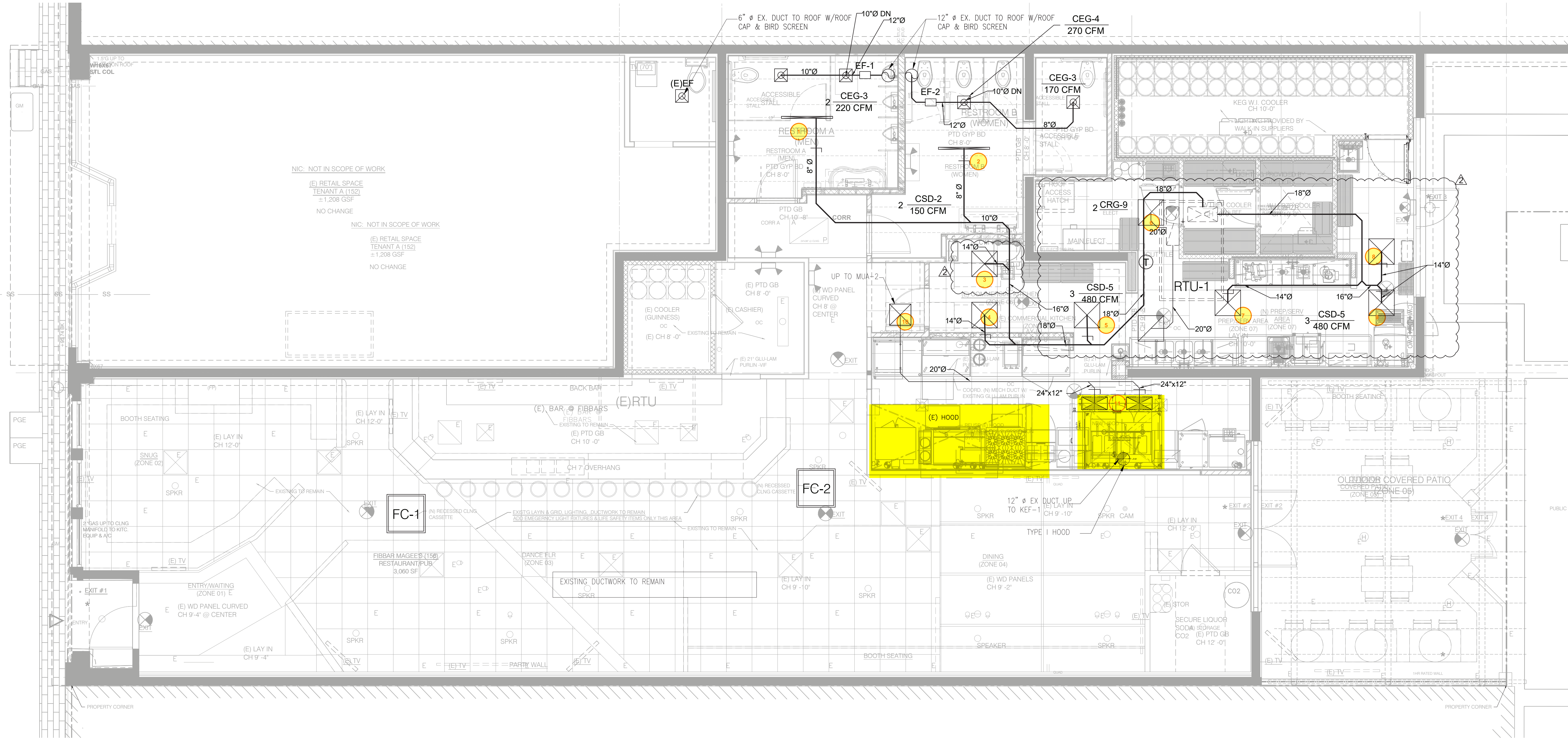
FIBBAR MAGEE'S RENOVATION
 FLOOR PLAN
 HVAC

PROJECT: FIBBAR MAGEE'S RENOVATION
 DRAWING TITLE: FLOOR PLAN HVAC

REV	DATE	DESCRIPTION
1	4/26/23	PLAN CHECK COMMENTS
2	6/1/23	PLAN CHECK COMMENTS

JOB NO.: 22-121
 CAD FILE:
 DSGN'D BY: I. R. DRAWN BY: H. N.
 CHK'D BY: I. R. APP'D BY: I. R.
 DATE: 09/14/22 SCALE: AS NOTED
 DRAWING NO.:

M1-1
 SHEET ___ OF ___



Building Safety Division
 City of Sunnyvale
 Aug 22 2023

FLOOR PLAN
 SCALE: 1/4" = 1'-0"

JOB COPY
 CITY OF SUNNYVALE

Reviewed for Code Compliance
 08/21/2023
 CSG CONSULTANTS, INC.



DRAWINGS NOT FOR CONSTRUCTION UNTIL STAMPED JOB COPY BY BUILDING DEPARTMENT. ALL DRAWINGS AND WRITTEN MATERIALS APPEARING HEREIN CONSTITUTE ORIGINAL AND UNPUBLISHED WORK OF THE ENGINEER AND MAY NOT BE REPRODUCED, COPIED, OR DISCLOSED WITHOUT WRITTEN CONSENT OF THE ENGINEER.

152 AND 156 S. MURPHY AVE.
 AND
 159 S. SUNNYVALE AVE.
 SUNNYVALE, CA 94086

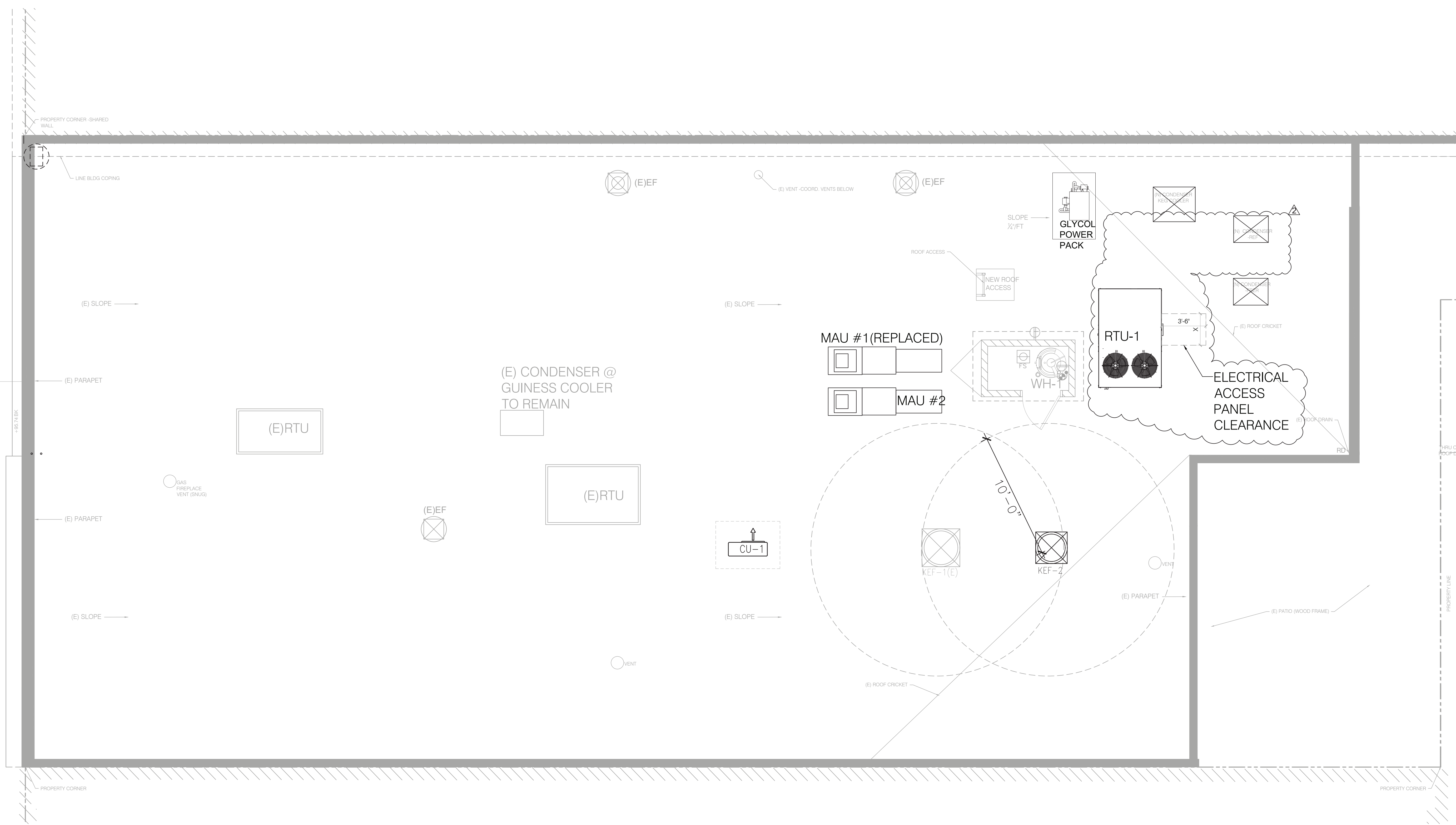
FIBBAR MCGEE'S RENOVATION

**ROOF PLAN
 HVAC**

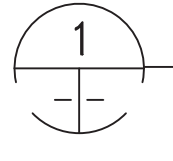
REV	DATE	DESCRIPTION
1	4/26/23	PLAN CHECK COMMENTS
2	6/1/23	PLAN CHECK COMMENTS

JOB NO.:	22-121
CAD FILE:	
DSGN'D BY:	I. R.
DRAWN BY:	H. N.
CHK'D BY:	I. R.
APP'D BY:	I. R.
DATE:	09/14/22
SCALE:	AS NOTED

DRAWING NO.:	
M2-1	
SHEET	* OF *



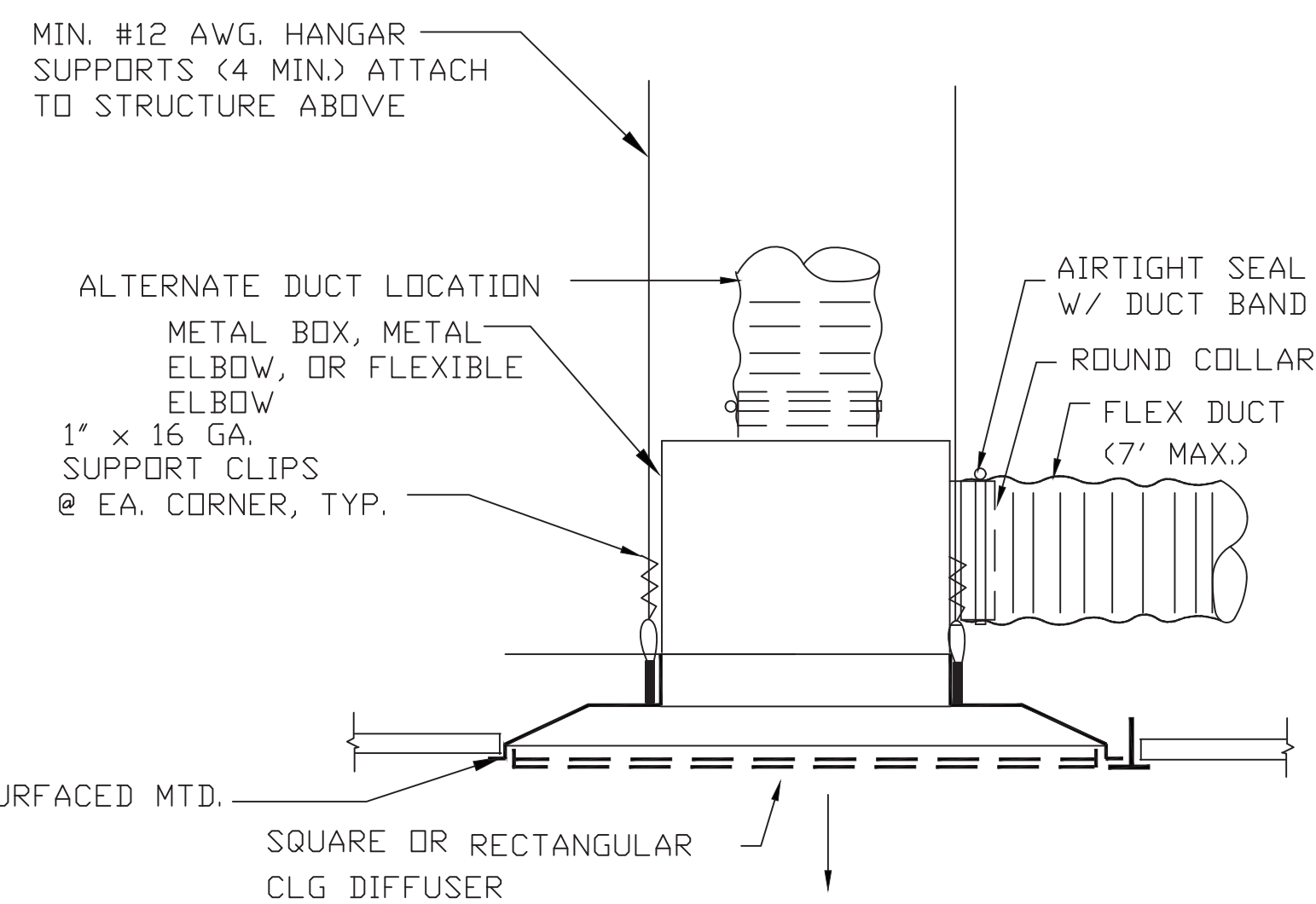
Building Safety Division
 City of Sunnyvale
 Aug 22 2023



ROOF PLAN HVAC
 SCALE: 1/4" = 1'-0"

For more information, please refer to the City of Sunnyvale website at www.cityofsunnyvale.com. The stamping of this plan shall not be held responsible for an approval of the violation of any provision of any City or State Law.
JOB COPY
 These plans must be kept on the job site at all times.
CITY OF SUNNYVALE

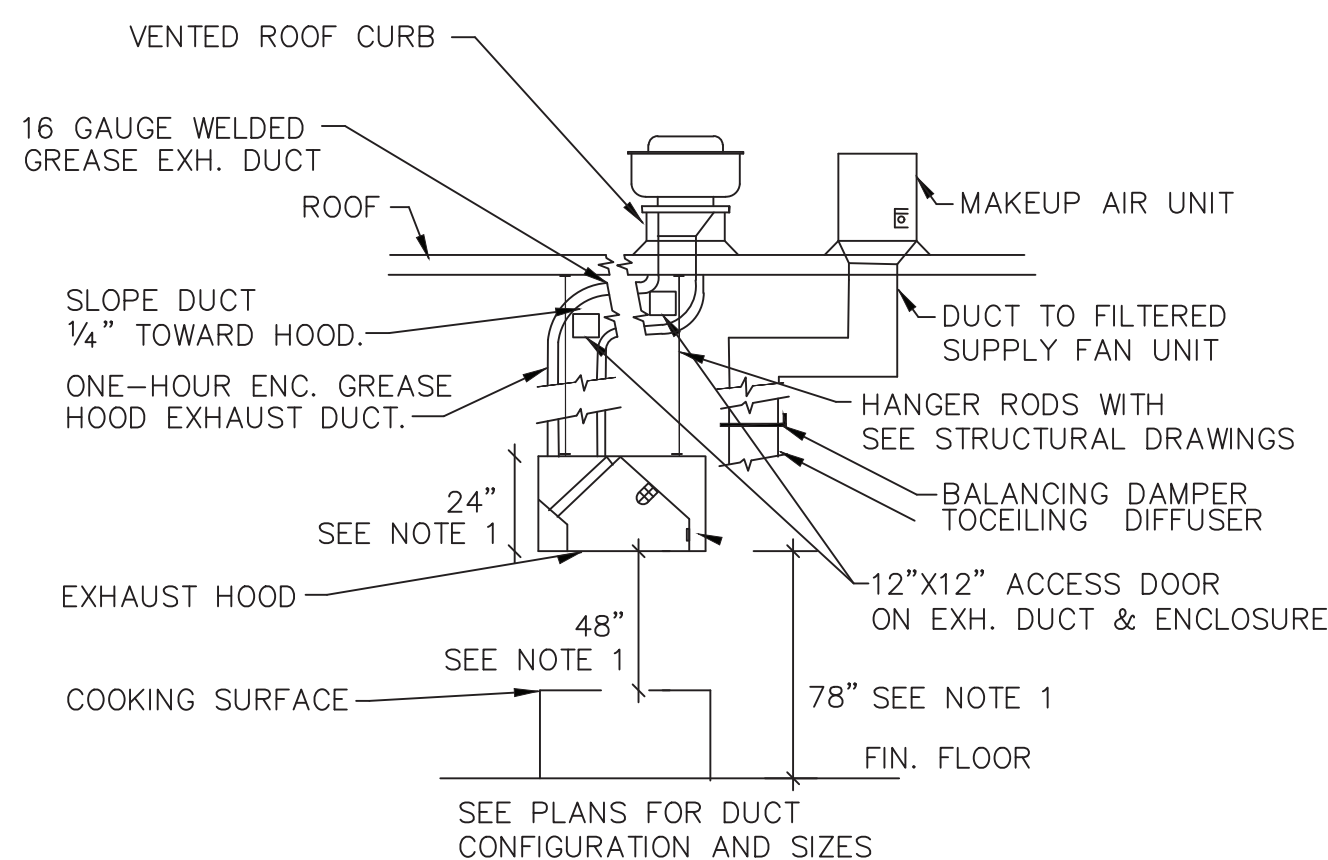
Reviewed for Code Compliance
 08/21/2023
CSG CONSULTANTS, INC.



NOTES:

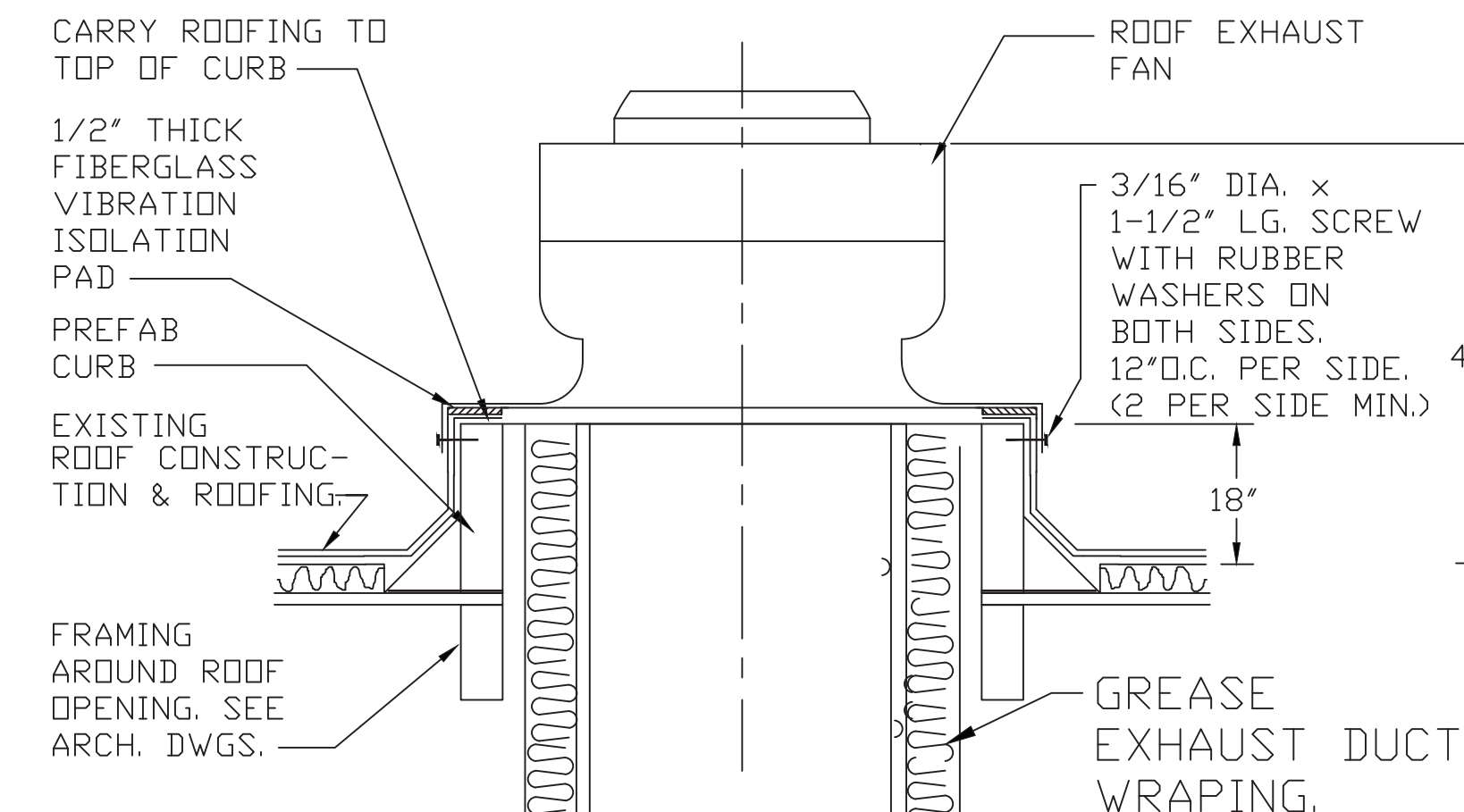
- INSTALL CEILING RETURN GRILLES SIMILAR
- ATTACH FLEX DUCT TO COLLAR W/ STAINLESS STEEL DRAW BAND AND TAPE OVER THE DRAW BAND. (TYP.)
- PROVIDE VOLUME DAMPER ON BRANCH DUCT TO DIFFUSER AS FAR AS POSSIBLE IN ADDITION TO DIFFUSER'S DAMPER
- PROVIDE RIGID DUCT FOR INACCESSIBLE HARD CEILING.

1 FLEXIBLE DUCT TO CEILING DIFFUSER
SCALE: NO SCALE



NOTE: 1. SEE HOOD MANUFACTURE DRAWING

2 HOOD VENTILATION SYSTEM TYPICAL DETAIL
SCALE: NO SCALE



NOTE:

- TOP OF CURB MUST BE LEVELED. SHIM BOTTOM OF CURB AS REQUIRED.

3 EXHAUST FAN MOUNTING DETAIL
SCALE: NO SCALE

Reviewed for Code Compliance
08/21/2023
CSG CONSULTANTS, INC.

I & A ENGINEERING
1610 BLOSSOM HILL ROAD, SUITE "6A"
SAN JOSE, CALIFORNIA 95124
TEL: (408) 268-9337
FAX: (408) 268-1135



DRAWINGS NOT FOR CONSTRUCTION UNTIL STAMPED JOB COPY BY BUILDING DEPARTMENT. ALL DRAWINGS AND WRITTEN MATERIALS APPEARING HEREIN CONSTITUTE ORIGINAL AND UNPUBLISHED WORK OF THE ENGINEER AND MAY NOT BE DUPLICATED, USED, OR DISCLOSED WITHOUT WRITTEN CONSENT OF THE ENGINEER.

152 AND 156 S. MURPHY AVE. AND 159 S. SUNNYVALE AVE. SUNNYVALE, CA 94086

FIBBAR MAGEE'S RENOVATION

DETAILS

PROJECT:

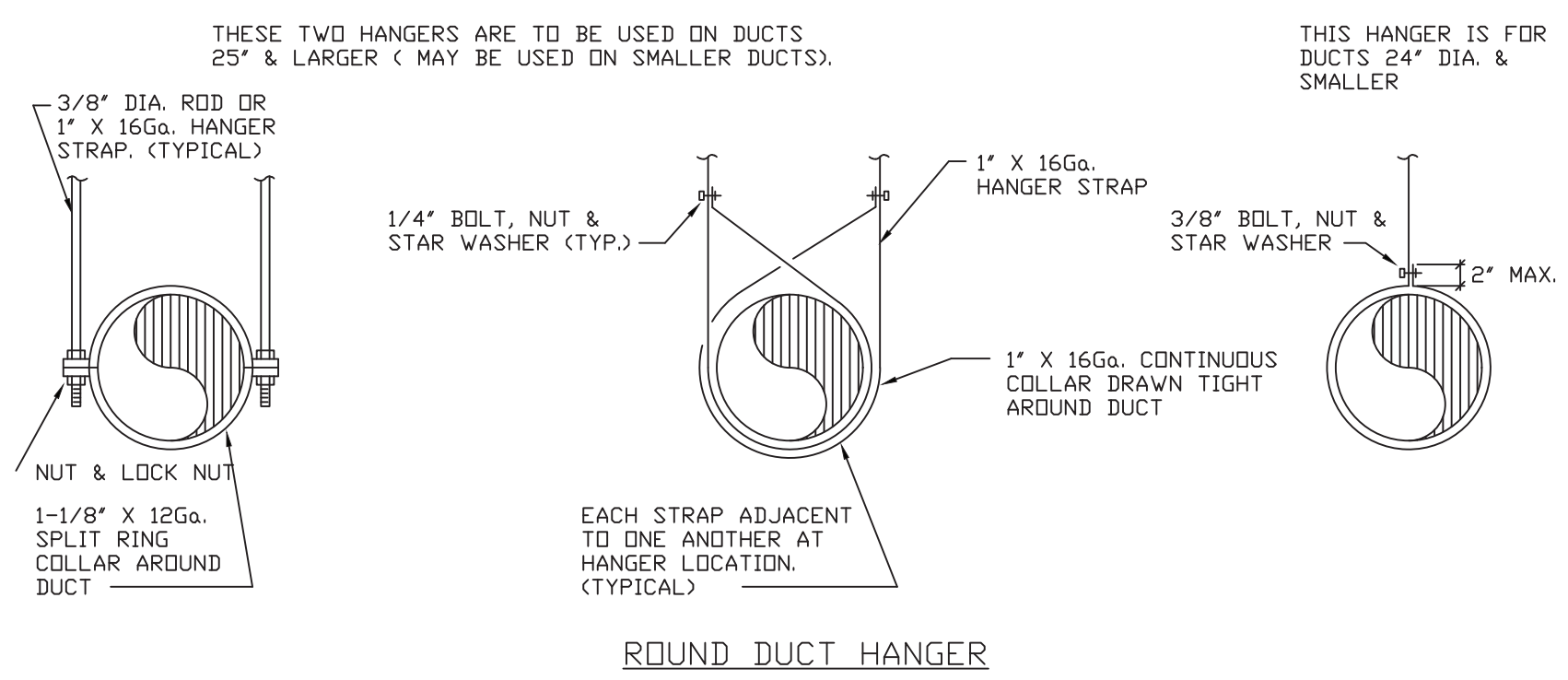
DRAWING TITLE:

REV	DATE	DESCRIPTION
1	4/26/23	PLAN CHECK COMMENTS
2	6/1/23	PLAN CHECK COMMENTS
3		
4		
5		
6		
7		
8		
9		
10		

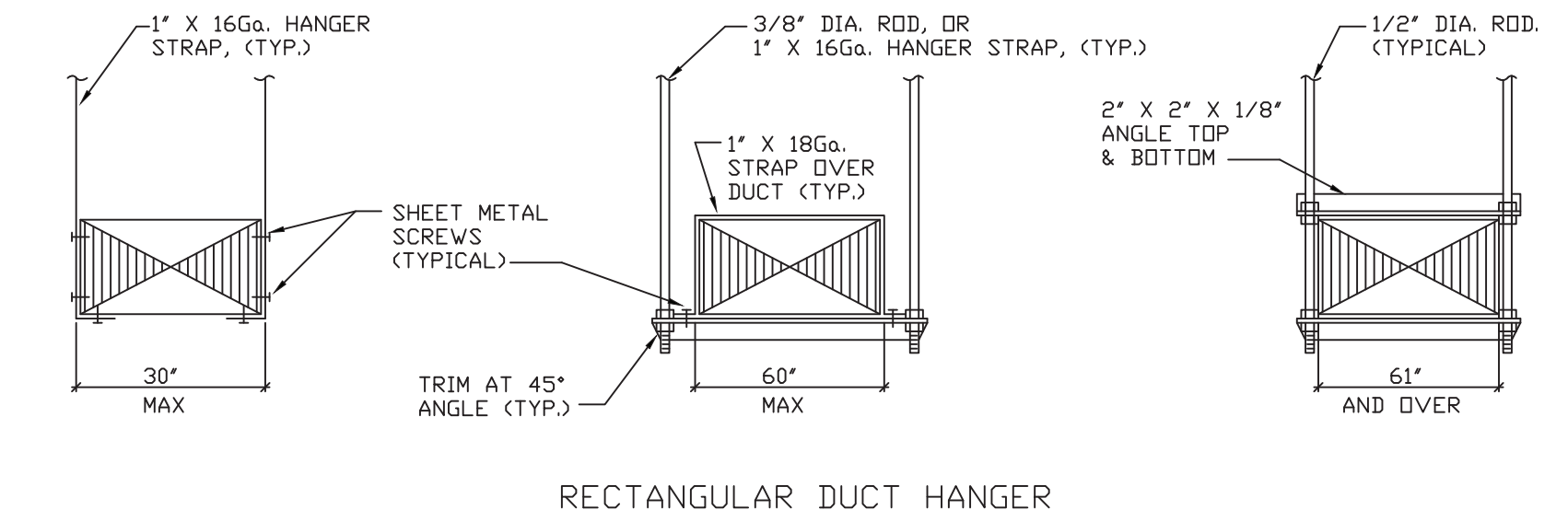
JOB NO.: 22-121
CAD FILE:
DSGN'D BY: I. R. DRAWN BY: H. N.
CHK'D BY: I. R. APP'D BY: I. R.
DATE: 09/14/22 SCALE: AS NOTED
DRAWING NO.:

M3-1

SHEET * OF *



ROUND DUCT HANGER



RECTANGULAR DUCT HANGER

NOTES:

- REFER TO SPECIFICATIONS FOR HANGER SPACINGS.
- ATTACHMENTS TO OVERHEAD STRUCTURE SHALL BE MADE IN ACCORDANCE WITH STRUCTURAL ENGINEERS REQUIREMENTS AND WEIGHT LIMITATIONS. ALL ATTACHMENT METHODS TO STRUCTURE SHALL BE SUBMITTED TO STRUCTURAL ENGINEER FOR REVIEW.
- PROVIDE SWAY & SEISMIC BRACING PER SMACNA SEISMIC GUIDELINES.
- ALL DUCT AND OTHER RELATED AIR DISTRIBUTION COMPONENT OPENINGS SHALL BE COVERED WITH TAPE, PLASTIC, SHEET METAL, OR OTHER ACCEPTABLE METHODS AT THE TIME OF ROUGH INSTALLATION OR DURING STORAGE ON THE CONSTRUCTION SITE AND UNTIL FINAL STARTUP OF THE HEATING AND COOLING EQUIPMENT.

4 DUCT HANGERS DETAILS
SCALE: NO SCALE

3M™ Fire Barrier Duct Wrap 615+
Product Data Sheet

1. Product Description

3M™ Fire Barrier Duct Wrap 615+ is a flexible fire-resistant wrap consisting of an inorganic fiber blanket encapsulated with a scrim-reinforced foil. The product is 1-1/2 in. thick, 66sf Density. It is used to fire rate commercial kitchen grease ducts as well as ventilation ducts. 3M™ Fire Barrier Duct Wrap 615+ is a proven alternative to 1- or 2-hour fire-resistant rated shaft enclosures for grease ducts (ICC-ES ESR-1255). With its excellent insulating capabilities, low weight and thin profile, it is an ideal choice for a duct enclosure system. This non-asbestos* wrap installs easily due to its high flexibility and strength.

* In accordance with the tolerances in ASTM C 592 Standard Specification for High-Temperature Fiber Blanket Thermal Insulation. † Has been demonstrated to be soluble in the lungs according to EU guideline 97/69/EG, for biopersistence.



Flexible and lightweight with a thin profile for easier application and reduced space requirements

Product Features

- Two-layer wrap for grease ducts rated as a shaft alternative per ASTM E 2336
- Zero clearance to combustible throughout the entire enclosure system for congested spaces
- Butted inner layer in 2-layer Grease Duct Applications
- One-layer wrap for fire-resistant ventilation ducts per ISO 6944
- High flexibility for installation ease
- Foil encapsulated for blanket protection, less dust, and high wrap strength
- Widest range of penetration seal systems
- Available in 24 in. x 25 ft. (609.6 mm x 7.62 m) and 48 in. x 25 ft. (1219.2 mm x 7.62 m) rolls
- Blanket adhered to foil scrim

2. Applications

3M™ Fire Barrier Duct Wrap 615+ is an ideal fire resistive enclosure for commercial kitchen grease ducts and ventilation air ducts. It is a proven performance alternative to a 1- or 2-hour fire-resistant rated shaft enclosures for grease ducts and provides zero clearance to combustible construction throughout the entire enclosure system. 3M™ Fire Barrier Water Tight Sealant 1000 NS, 3M™ Fire Barrier Water Tight Sealant 1003 SL or 3M™ Fire Barrier Silicone Sealant 2000+ is used in combination with 3M™ Fire Barrier Duct Wrap 615+ to firestop the duct when the duct penetrates fire-rated floor or wall assemblies. 3M™ Fire Barrier Duct Wrap 615+ also provides a firestop solution where a T-railing is required for penetrations located outside wall cavities or outside fire-resistance rated shaft enclosures.

Two-layer grease duct applications: 3M™ Fire Barrier Duct Wrap 615+ meets the criteria of ASTM E 2336 Standard Test Methods for Fire Resistive Grease Duct Enclosure Systems.

Single-layer air duct applications: 3M™ Fire Barrier Duct Wrap 615+ has passed ISO 6944-1985 Fire Resistance Tests - Ventilation Ducts.

T-railing for metallic through-penetrations: 3M™ Fire Barrier Duct Wrap 615+ is used in conjunction with 3M Fire Barrier sealants to achieve up to 2-hour equal F & T ratings in ASTM E 814 (UL 1479) tested through-penetrations.

3. Specifications

Installation shall be in accordance with manufacturer's written instructions, as shown on the approved shop drawings. 3M™ Fire Barrier Duct Wrap 615+ shall be installed in a single layer fire blanket thermal insulation encapsulated with a fiberglass-reinforced aluminum polyester foil. Duct Wrap density shall be nominal 66sf (96 kg/m³) and have a nominal 1-1/2 in. (38.1 mm) thickness. The fiber blanket shall have a continuous use limit of 1000 °C (1832 °F). The foil thermal resistance (R-value) at ambient temperature shall be minimum 0.08 hr-ft²-°F/Btu.

Smoke Developed Index and Flame Spread Index of the bare blanket, and of the foil encapsulated blanket shall be 0.0. The foil encapsulation shall be bonded to the core blanket material.

For technical support relating to 3M Fire Protection Products and Systems, call: 1-800-328-1687
For more information on 3M Fire Protection Products, visit: www.3m.com/firestop

4. Performance & Typical Physical Properties

Blanket Color:	White	Thermal Conductivity:	Temp. in °F	Temp. in °C
Blanket Weight:	0.9 lbs./ft. ² (4.38 kg/m ²)	500°F (260°C)	0.60	0.09
Surface Burning:	Foil Encapsulated Blanket (ASTM E 84)	1000°F (537°C)	1.15	0.17
	Flame Spread 0, Smoke Development 0	1500°F (815°C)	1.93	0.28
		1800°F (992°C)	2.51	0.36
		3000°F (1693°C)	2.94	0.43

Single layer R-value of 3M™ Fire Barrier Duct Wrap 615+ at 77°F (25°C): $6.38 \frac{hr \cdot ft^2 \cdot ^\circ F}{Btu}$
Linear Shrinkage (24 Hr@ 2012°F (1000°C)): 1.2%

5. Design Listings

Fire Resistive Rating	Enclosure System	Third-Party Testing Services Design Listing	Description
1- and 2-hour	2 layers of 3M™ Fire Barrier Duct Wrap 615+	ICC-ES ESR-1255 Intertek 3MU/FRD 120-18 Intertek 3MU/FRD 120-19	Rectangular Rectangular Round

Fire Resistive Rating	Enclosure System	Third-Party Testing Services Design Listing	Description
1- and 2-hour	1 layer of 3M™ Fire Barrier Duct Wrap 615+	Intertek 3MU/DI 60-01 Underwriters Laboratories HNLJ.V-27 Intertek 3MU/DI 120-01	Rectangular/Round (1 Hour) Rectangular (2 Hour) Rectangular/Round (2 Hour)

This document only contains a partial list of Design Listings. For the latest information go to www.3m.com/firestop or speak to your authorized 3M distributor or sales representative at (800) 328-1687.

6. Codes & Test Standards

3M™ Fire Barrier Duct Wrap 615+ has been tested in accordance with the following:
ICC-ES AC101, ASTM E 136, ASTM E 518, ASTM E 2336, ISO 6944-85, ASTM E 119, ASTM E 814, ASTM E 84
3M™ Fire Barrier Duct Wrap 615+, when installed per ASTM E 2336 tested Grease Duct Design Listings, meets the following code requirements:
NFPA 96 2008 Edition International Mechanical Code® 2003:2006:2009
3M™ Fire Barrier Duct Wrap 615+, when installed per ISO 6944 tested Ventilation Duct Design Listings, can help to satisfy the following code requirements:
NFPA 92A 2009 Edition - Section 6.6.2 NFPA 92B 2009 Edition - Section 7.5.2
International Building Code® 2006:2009 Editions - Section 909.10.2

7. Packaging, Storage, Shelf Life

3M™ Fire Barrier Duct Wrap 615+ rolls are packaged in corrugated cardboard boxes. Product is stable under normal storage conditions. Normal stock and stock rotation practices are recommended. 3M™ Fire Barrier Duct Wrap 615+ shelf life is indefinite when stored in original unopened packaging in a dry warehouse environment. Pallets should not be stacked. 3M™ Fire Barrier Water Tight Sealant 1000 NS or 1003 SL or 3M™ Fire Barrier Silicone Sealant 2000+ is also stored in a dry warehouse environment.

8. Safe Handling Information

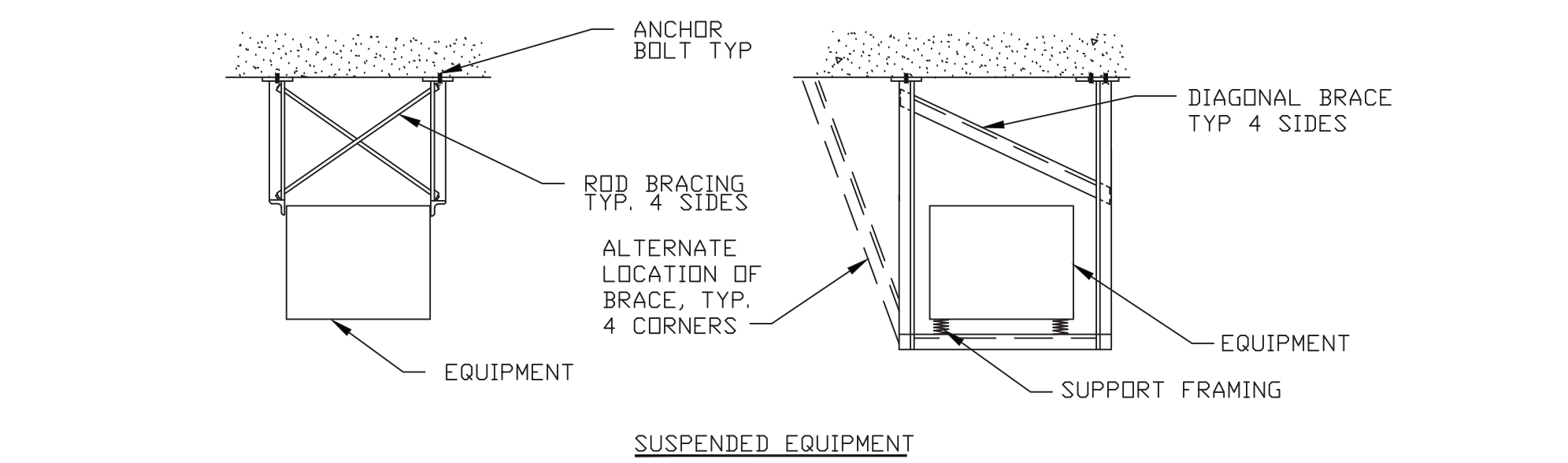
Consult country-of-use material Safety Data Sheet (MSDS) prior to handling and disposal.

9. Availability

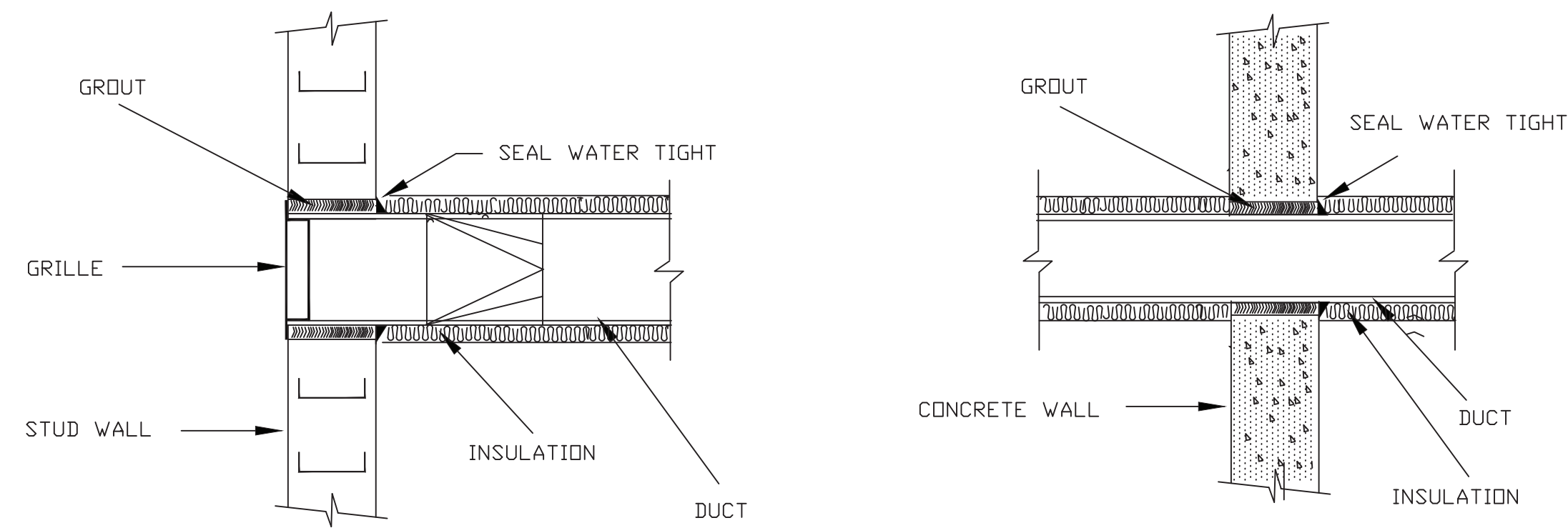
Description	Size	Unit	Billing UPC Number	Units/Case	Price Unit
Space-saving, flexible duct wrap with up to 2-HR protection	24" x 25' Roll	Roll	00051115-54905-2	1	EA
Space-saving, flexible duct wrap with up to 2-HR protection	48" x 25' Roll	Roll	00051115-54906-0	1	EA
Collar for butted joint installations	6" x 25' Roll	Roll	00051115-18804-6	4	EA

For additional technical and purchasing information regarding 3M Fire Protection Products, please call: 1-800-328-1687 or visit www.3m.com/firestop.
3M™ Fire Barrier Duct Wrap 615+ is available from 3M Authorized Fire Protection Products Distributors and Dealers.

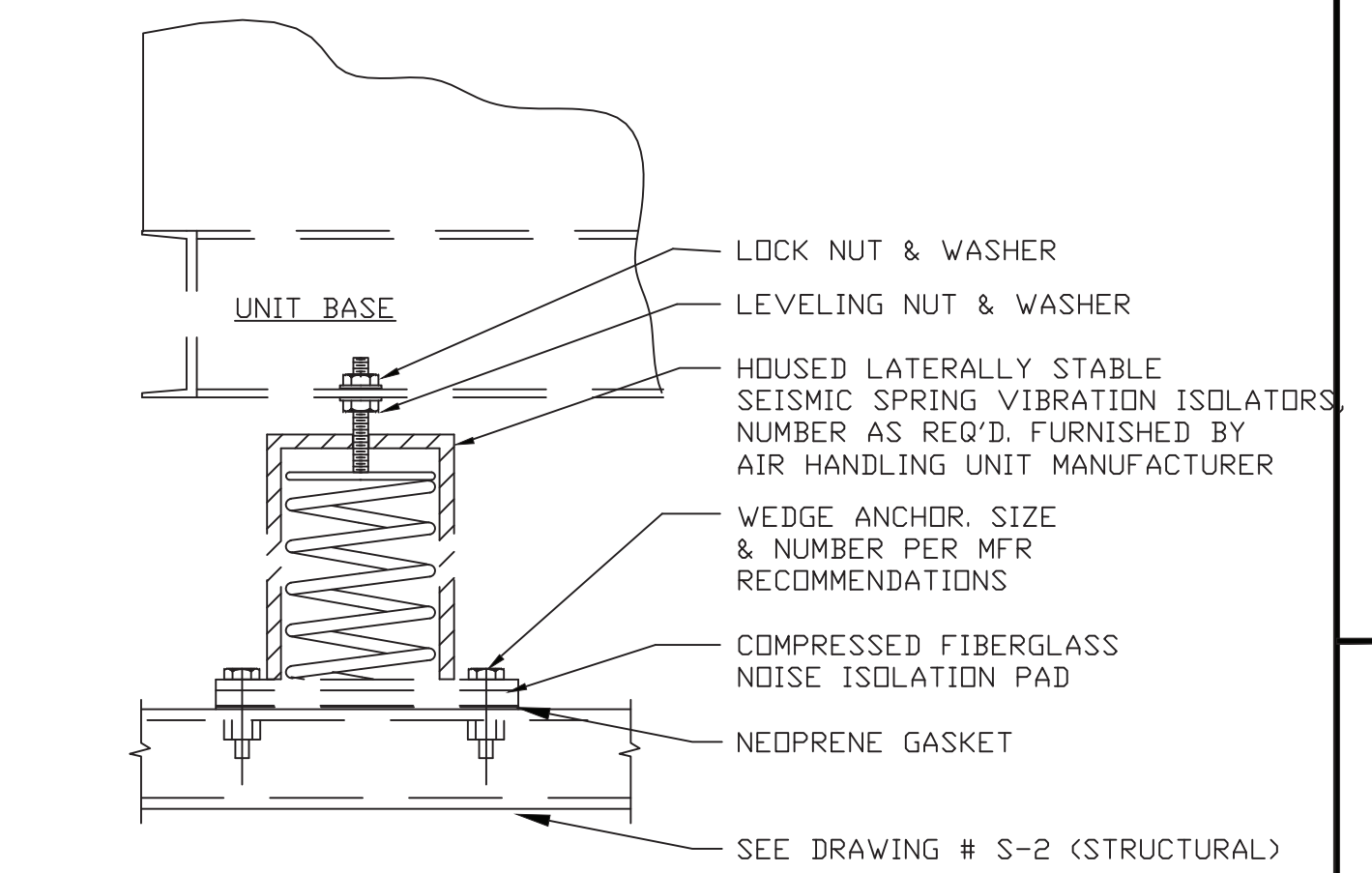
Important Notice to Buyer: Technical Information: The technical information, recommendations and other statements contained in this document are based upon tests or experience that 3M believes are reliable, but the accuracy or completeness of such information is not guaranteed. Product Use: Many factors beyond 3M's control and uniquely within user's knowledge and control can affect the use and performance of a 3M product in a particular application. Given the variety of factors that can affect the use and performance of a 3M product, user is solely responsible for evaluating the 3M product and determining whether it is fit for a particular purpose and suitable for user's method of application.
Warranty and Limited Remedy: 3M warrants that each 3M Fire Protection Product will be free from defects in material and manufacture for 90 days from the date of purchase from 3M's authorized distributor. 3M MAKES NO OTHER EXPRESS OR IMPLIED WARRANTIES, INCLUDING ANY IMPLIED WARRANTY OF MERCHANTABILITY OR FITNESS FOR A PARTICULAR PURPOSE. If a 3M product does not conform to this warranty, the sole and exclusive remedy is, at 3M's option, replacement of the 3M product or refund of the purchase price. Limitation of Liability: Except where prohibited by law, 3M will not be liable for any loss or damage arising from the 3M product, whether direct, indirect, special, incidental or consequential, regardless of the legal theory asserted.
Please Recycle. Printed in USA. © 3M 2011. All Rights Reserved. Reference: 98-0213-4648-5 3M is a trademark of 3M Company. All other trademarks are the property of their respective owners.



1 TYPICAL SEISMIC RESTRAINT AND SUPPORTS FOR EQUIPMENT
SCALE: NO SCALE



2 DUCT THRU STUD & CONCRETE WALL DETAIL
SCALE: NO SCALE



3 HVAC EQUIPMENT MOUNTING DETAIL
SCALE: NO SCALE

I & A ENGINEERING

1610 BLOSSOM HILL ROAD, SUITE "6A"
SAN JOSE, CALIFORNIA 95124
TEL: (408) 268-9377
FAX: (408) 268-1135

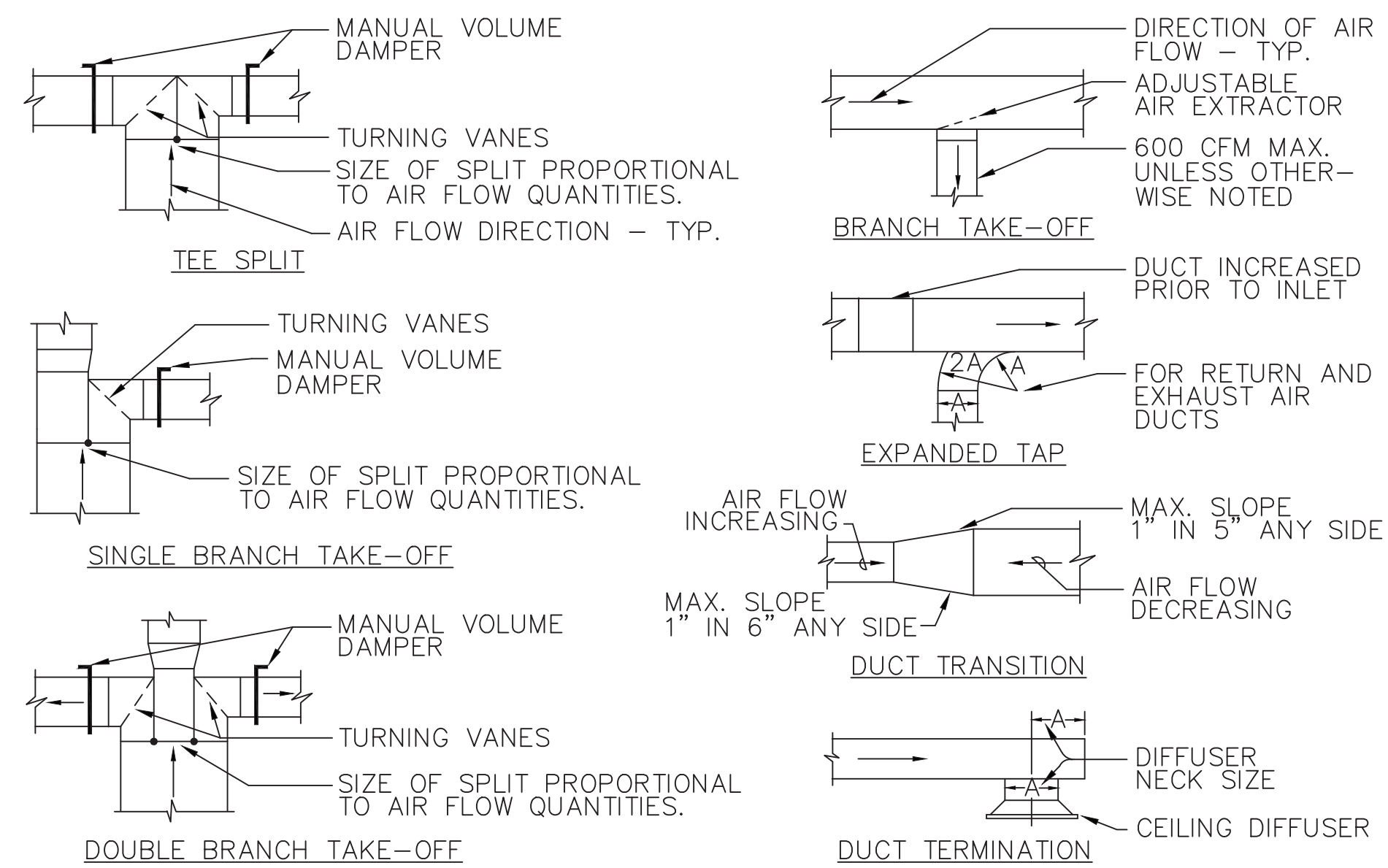


DRAWINGS NOT FOR CONSTRUCTION UNTIL STAMPED JOB COPY BY BUILDING DEPARTMENT. ALL DRAWINGS AND WRITTEN MATERIALS APPEARING HEREIN CONSTITUTE ORIGINAL AND UNPUBLISHED WORK OF THE ENGINEER AND MAY NOT BE DUPLICATED, USED, OR DISCLOSED WITHOUT WRITTEN CONSENT OF THE ENGINEER.

152 AND 156 S. MURPHY AVE.
AND
159 S. SUNNYVALE AVE.
SUNNYVALE, CA 94086

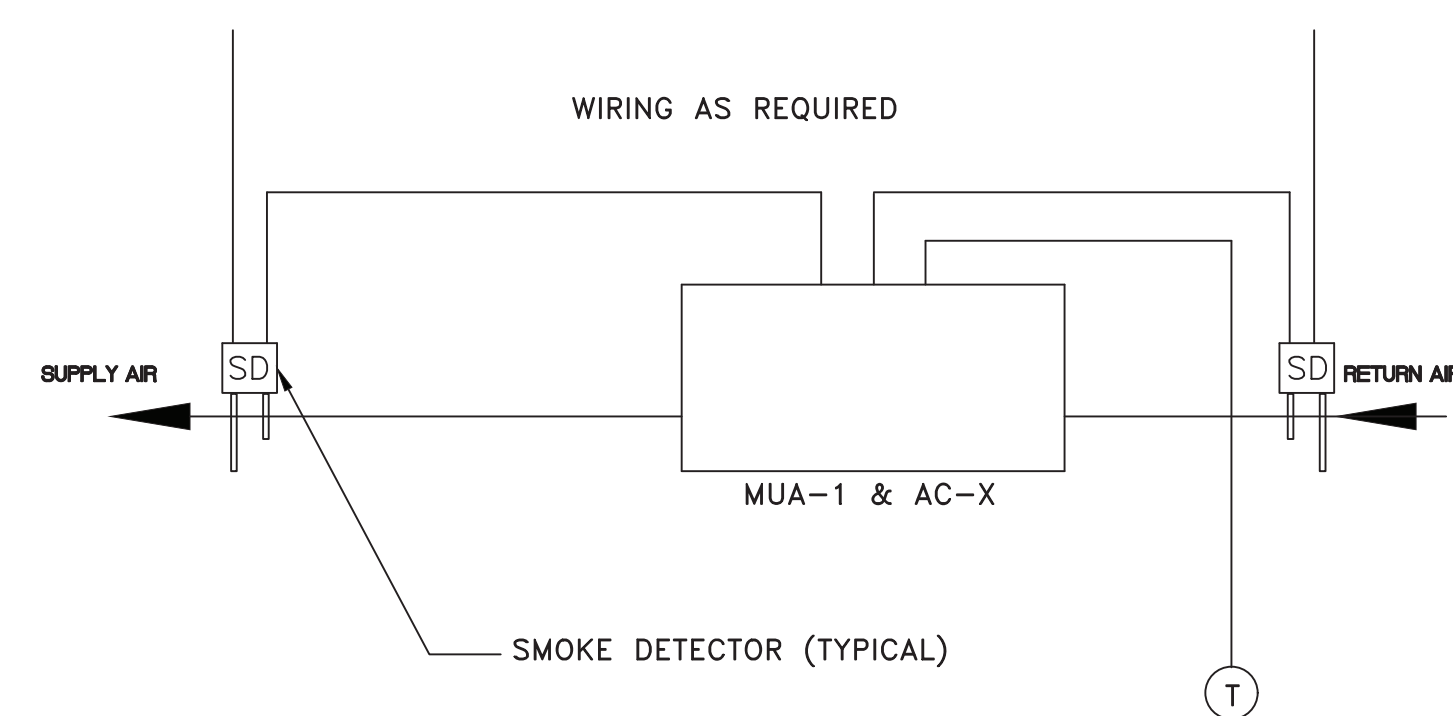
FIBBAR MCGEE'S RENOVATION

DETAILS

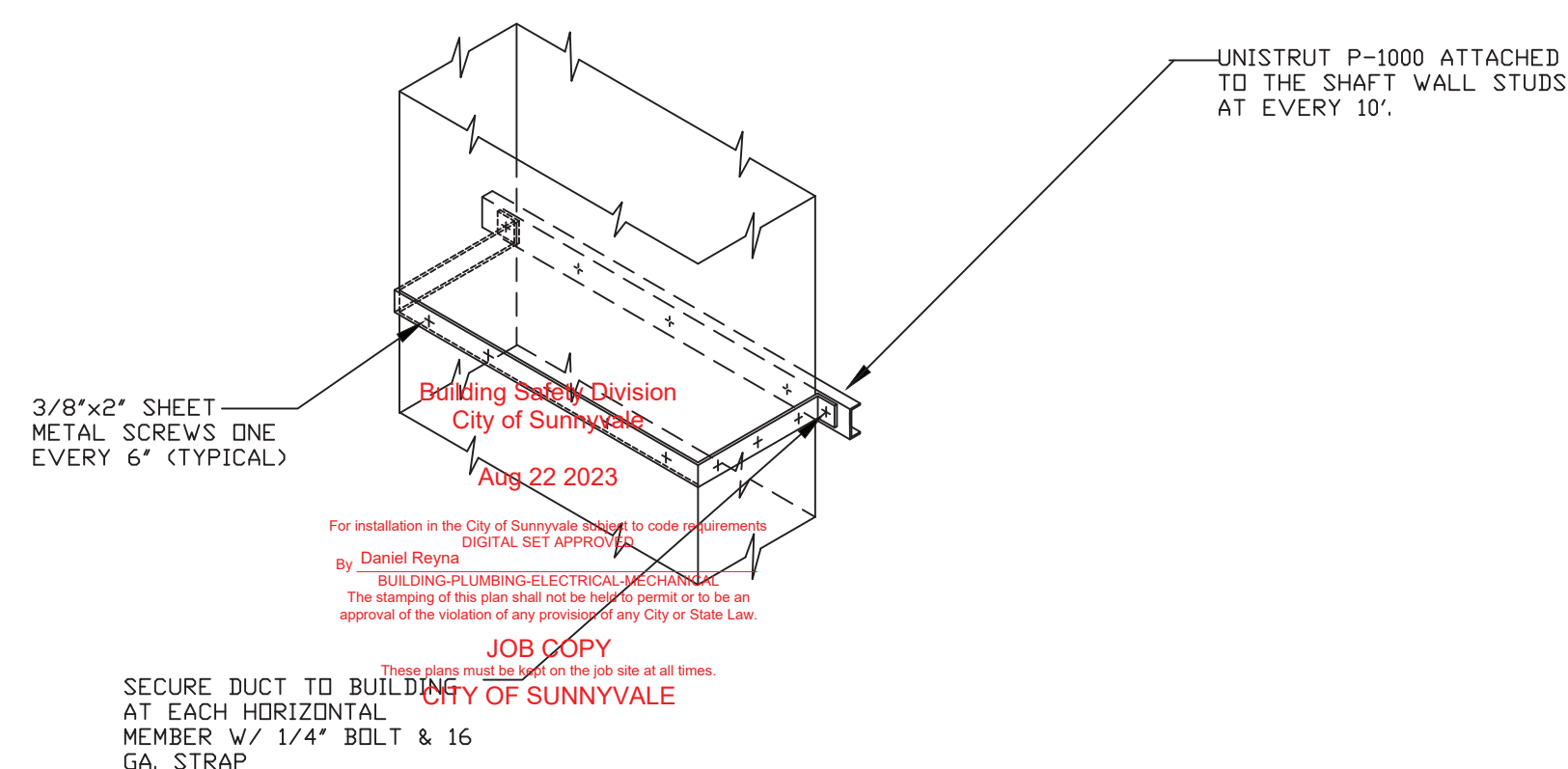


5 TYPICAL RECTANGULAR DUCT FITTING DETAIL
NOT TO SCALE

Reviewed for Code Compliance
08/21/2023
CSG CONSULTANTS, INC.



6 MAKEUP AIR UNIT & AC-X WIRING DIAGRAM
SCALE: NO SCALE



7 VERTICAL KITCHEN EXHAUST DUCT INSTALLATION DETAIL
SCALE: NO SCALE

PROJECT:

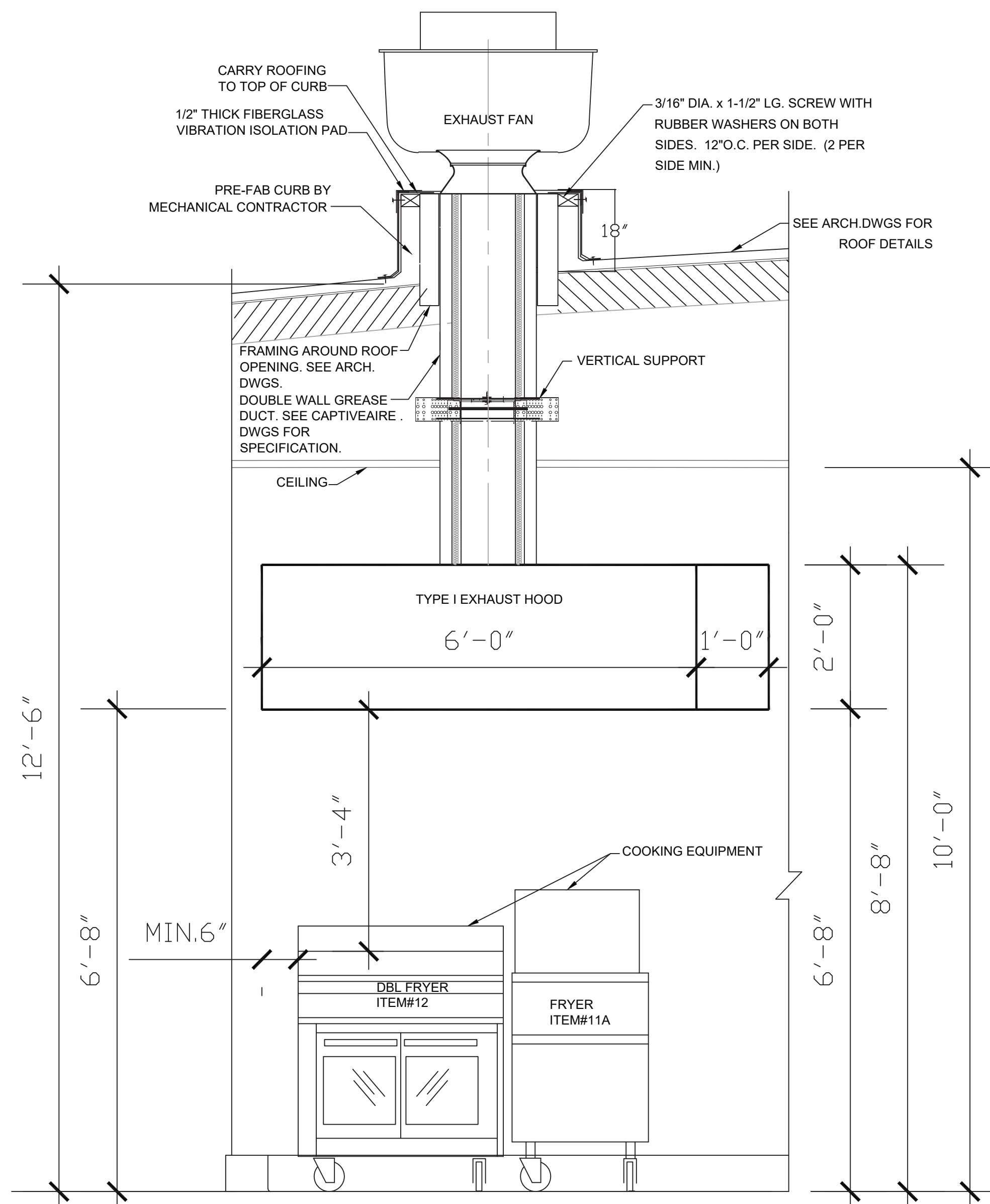
REV	DATE	DESCRIPTION
△	4/26/23	PLAN CHECK COMMENTS
△	6/1/23	PLAN CHECK COMMENTS
△		
△		
△		
△		

JOB NO.:	22-121
CAD FILE:	
DSGN'D BY:	I. R.
DRAWN BY:	H. N.
CHK'D BY:	I. R.
APP'D BY:	I. R.
DATE:	09/14/22
SCALE:	AS NOTED

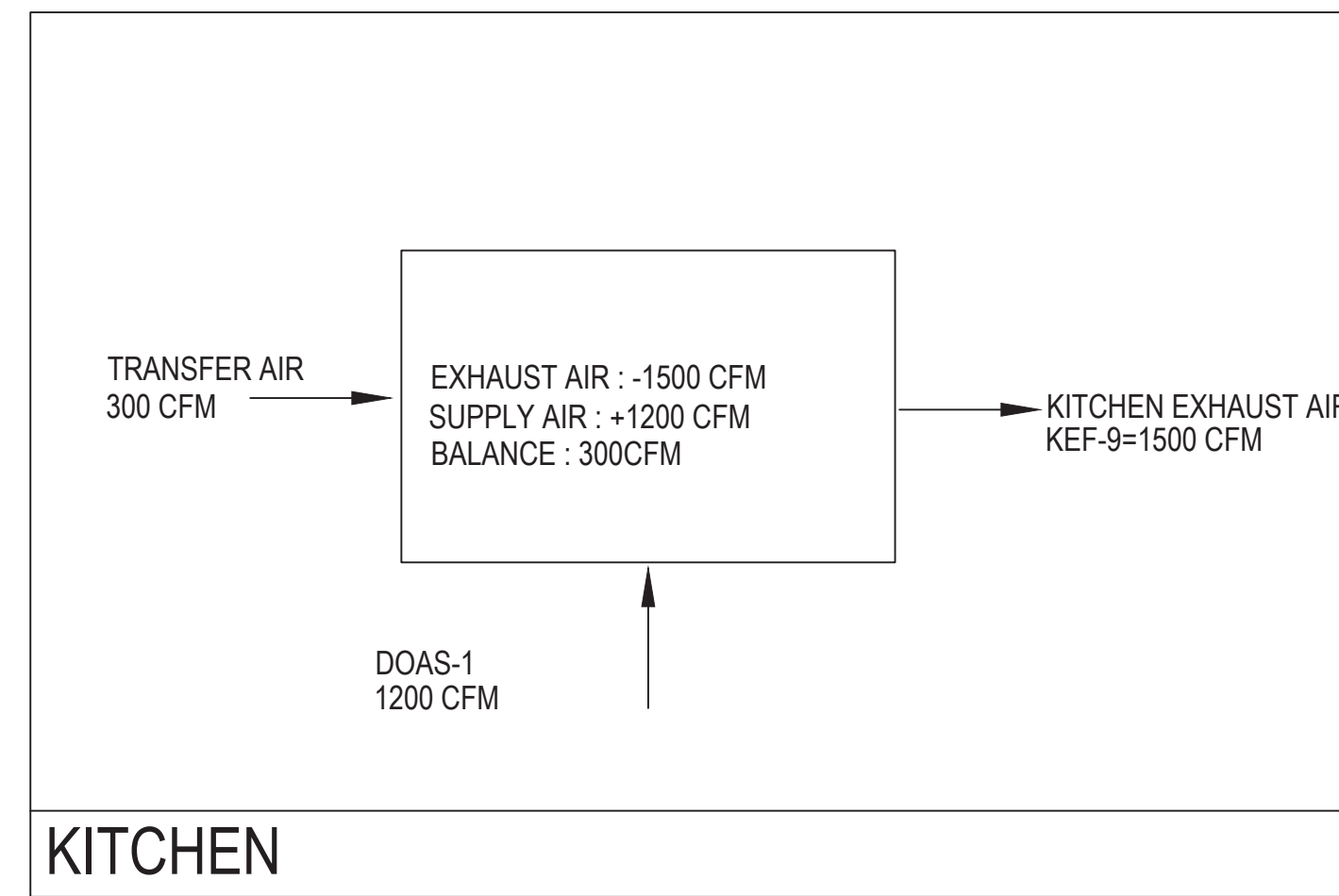
DRAWING NO.:

M3-2

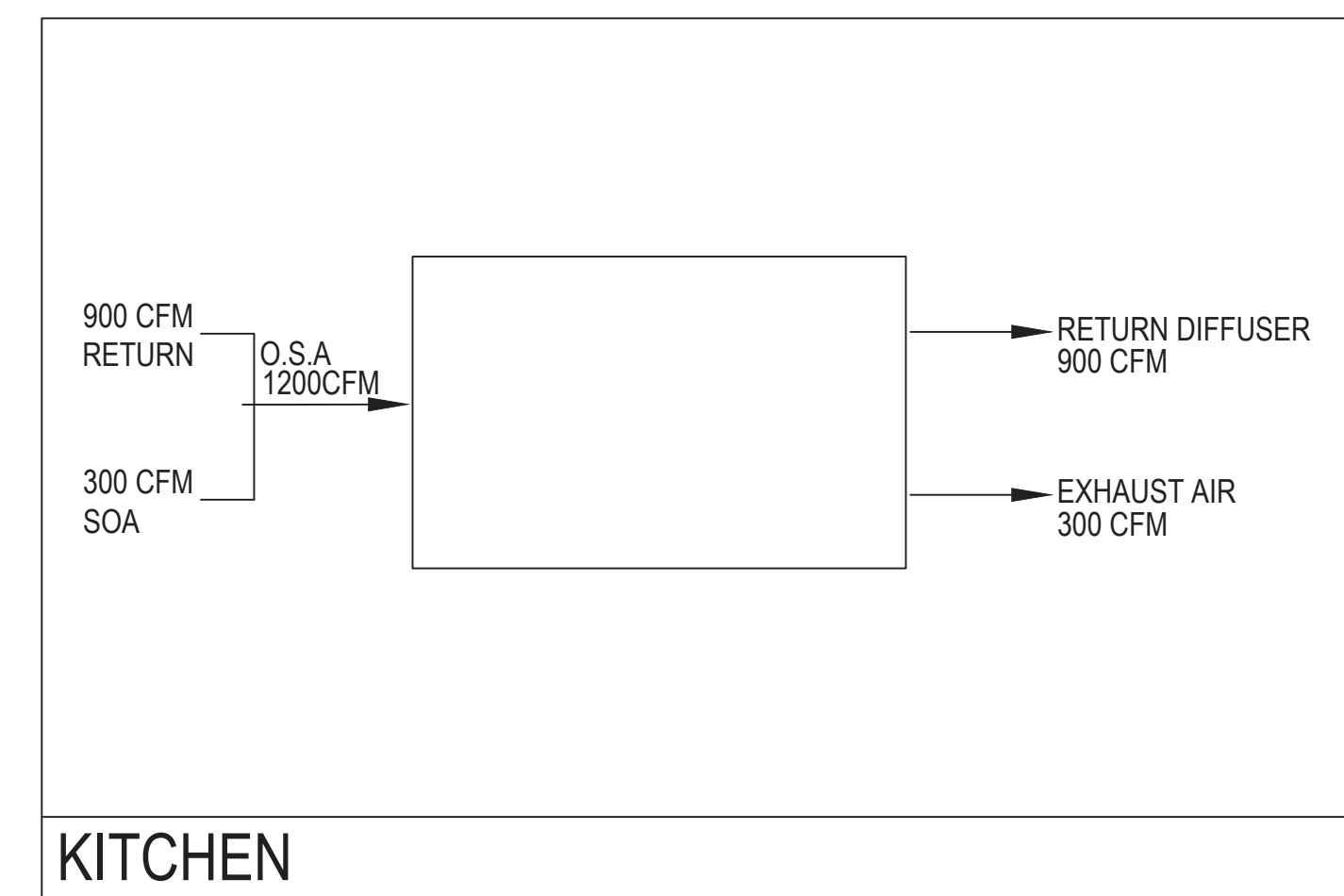
SHEET * OF *



1 KITCHEN HOOD ELEVATION
SCALE: 3/4"=1'-0"

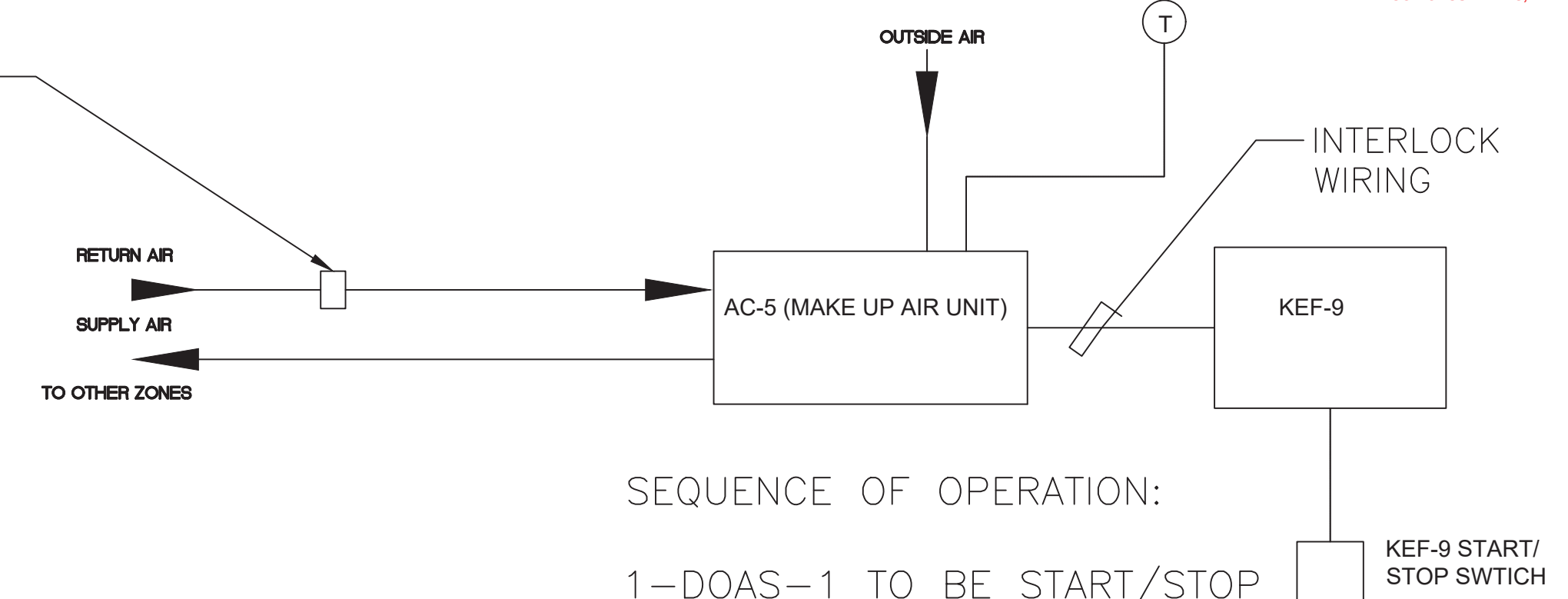


2 AIR BALANCE DIAGRAM WHEN KITCHEN EXHAUST FAN IS ON
SCALE: NO SCALE



3 AIR BALANCE DIAGRAM WHEN KITCHEN EXHAUST FAN IS OFF
SCALE: NO SCALE

BAROMETRIC DAMPER
BALANCING TO RETURN
300CFM WHEN KITCHEN
EXHAUST FAN 9 IS ON .
AND PROVIDE 1000CFM
WHEN KITCHEN EXHAUST
FAN 9 IS OFF.

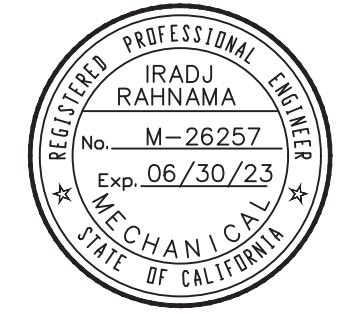


4 DOAS-1 WIRING DIAGRAM
NOT TO SCALE

Building Safety Division
City of Sunnyvale
Aug 22 2023
For installation in the City of Sunnyvale subject to code requirements
DIGITAL SET APPROVED
By: Daniel Reyes
BUILDING/PLUMBING/ELECTRICAL/MECHANICAL
The stamping of this plan shall not be held to be an approval of the violation of any provision of any City or State Law.
JOB COPY
These plans must be kept on the job site at all times.
CITY OF SUNNYVALE

I & A ENGINEERING

1610 BLOSSOM HILL ROAD, SUITE "6A"
SAN JOSE, CALIFORNIA 95124
TEL: (408) 268-9337
FAX: (408) 268-1135



DRAWINGS NOT FOR CONSTRUCTION UNTIL STAMPED JOB COPY BY BUILDING DEPARTMENT. ALL DRAWINGS AND WRITTEN MATERIALS APPEARING HEREIN CONSTITUTE ORIGINAL AND UNPUBLISHED WORK OF THE ENGINEER AND MAY NOT BE DUPLICATED, USED, OR DISCLOSED WITHOUT WRITTEN CONSENT OF THE ENGINEER.

152 AND 156 S. MURPHY AVE.
AND
159 S. SUNNYVALE AVE.
SUNNYVALE, CA 94086

FIBBAR MCGEE'S RENOVATION

DETAILS

PROJECT:

DRAWING TITLE:

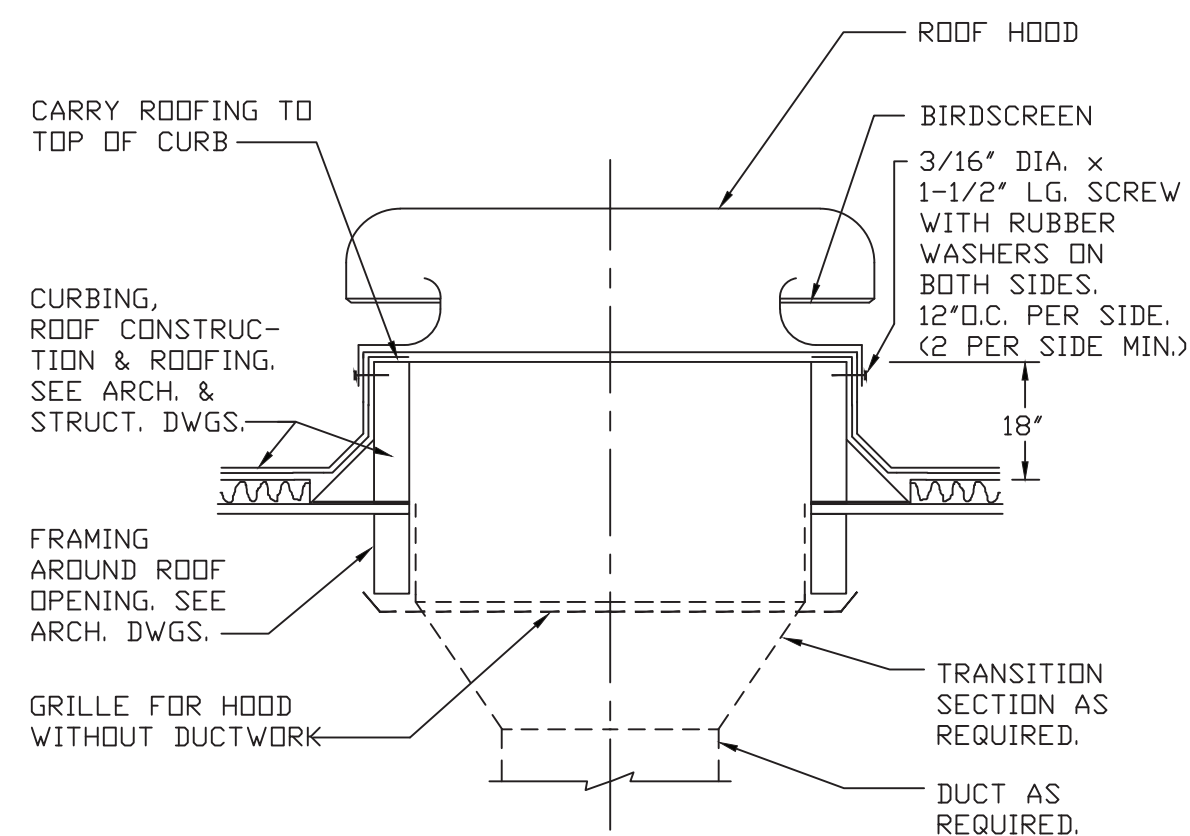
REV	DATE	DESCRIPTION
1	4/26/23	PLAN CHECK COMMENTS
2	6/1/23	PLAN CHECK COMMENTS

JOB NO.:	22-121
CAD FILE:	
DSGN'D BY:	I. R.
DRAWN BY:	H. N.
CHK'D BY:	I. R.
APP'D BY:	I. R.
DATE:	09/14/22
SCALE:	AS NOTED

DRAWING NO.:

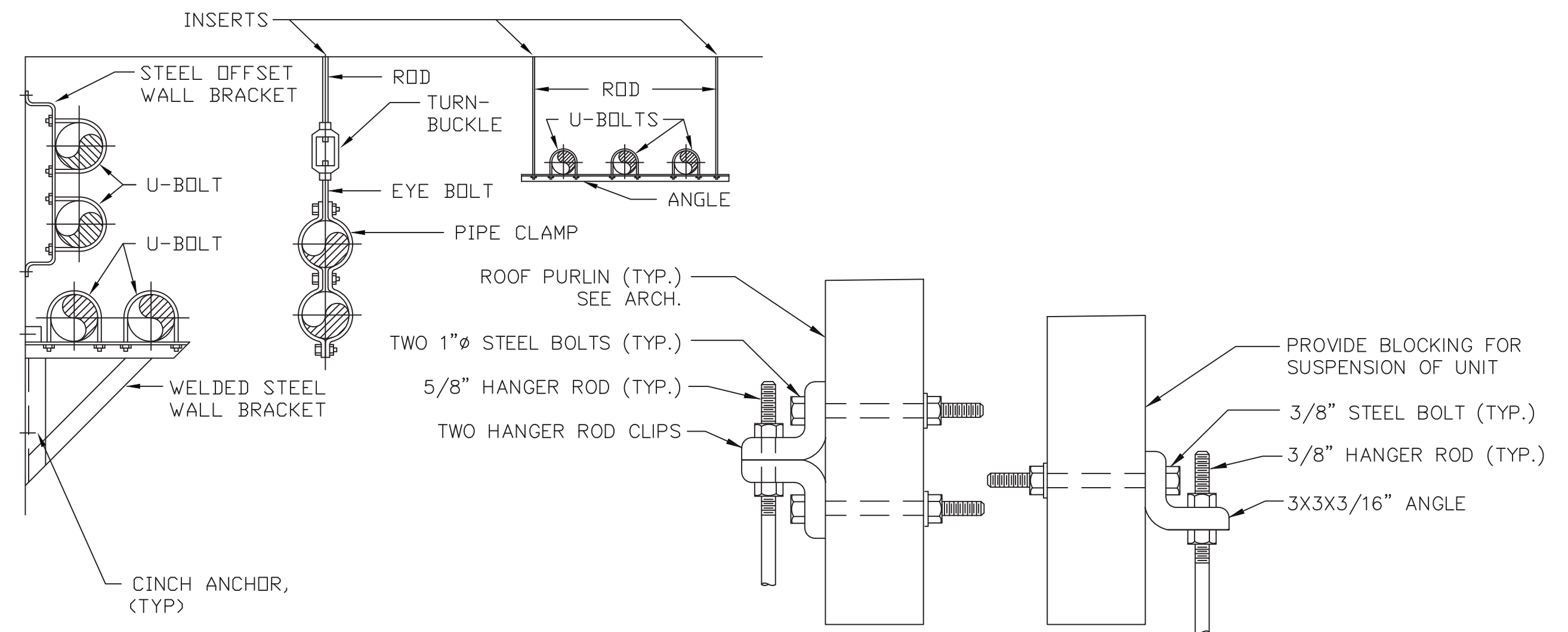
M3-3

SHEET ___ OF ___

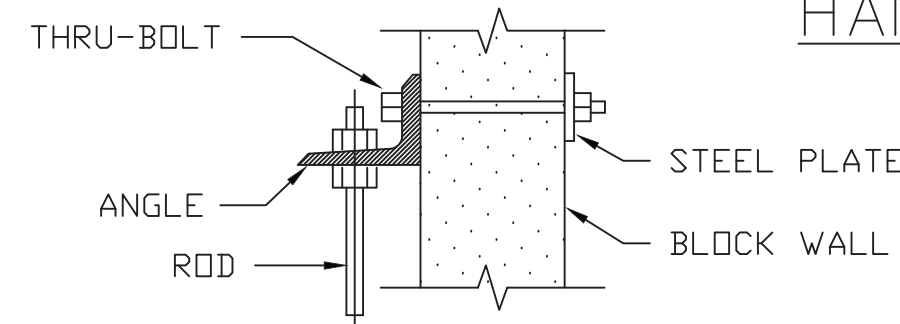


NOTE:
1. TOP OF CURB MUST BE LEVELED.
SHIM BOTTOM OF CURB AS REQUIRED.

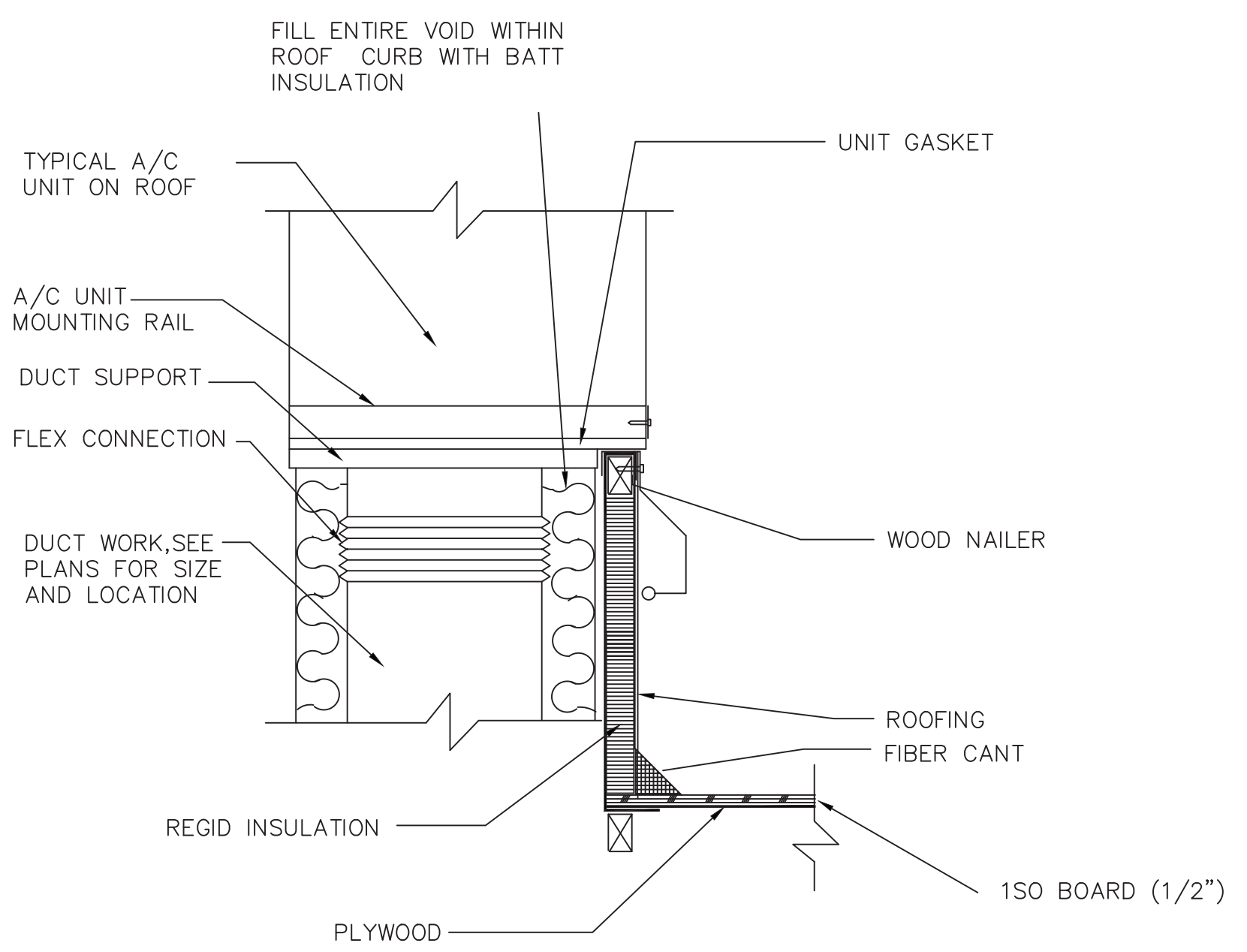
1 ROOF HOOD MOUNTING DETAIL
SCALE: NO SCALE



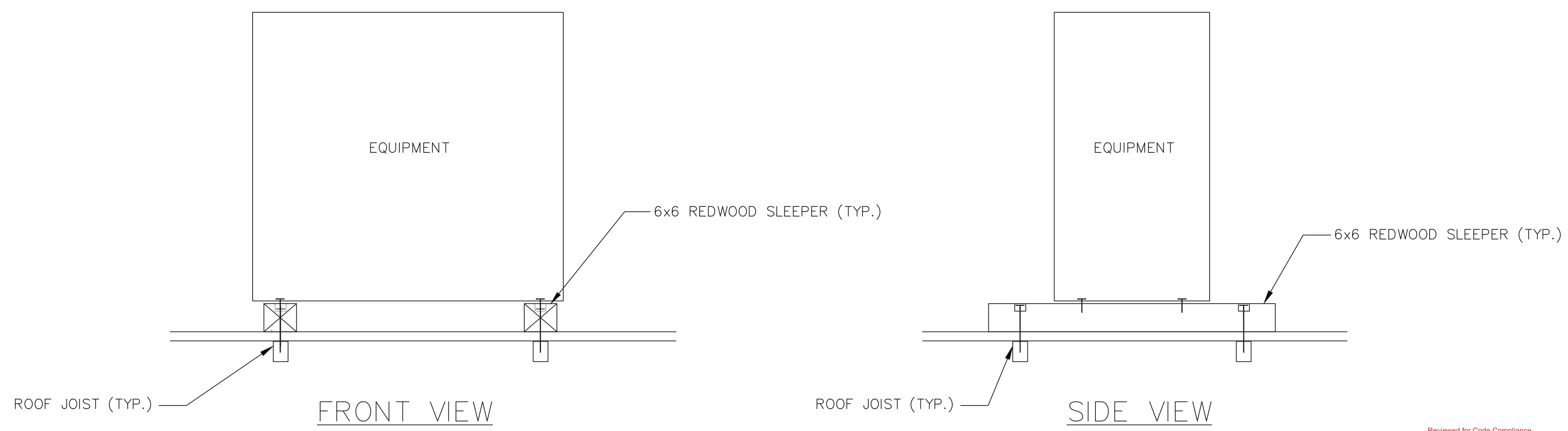
HANGER ROD DETAIL



2 TYPICAL PIPE SUPPORT DETAILS
SCALE: NO SCALE



3 ROOF TOP UNIT MOUNTING DETAIL
SCALE: NO SCALE



CONTRACTOR SHALL VERIFY ALL EQUIPMENT LOCATIONS, SIZES, ROOF JOIST & ANCHORAGES PRIOR TO EQUIPMENT INSTALLATION. VERIFY BOLT CENTER FOR EQUIPMENT PER SHOP DRAWINGS.

4 CONDENSER ROOF INSTALLATION DETAIL
SCALE: NO SCALE

Building Safety Division
City of Sunnyvale
Aug 22 2023
For installation in the City of Sunnyvale subject to code requirements
DIGITAL SET APPROVED
By: Darin Rypka
BUILDING/PLUMBING/ELECTRICAL/MECHANICAL
The stamping of this plan shall not be held to permit or be an approval of the violation of any provision of any City or State Law.
JOB COPY
These plans must be kept on the job site at all times.
CITY OF SUNNYVALE

I & A ENGINEERING
1610 BLOSSOM HILL ROAD, SUITE "6A"
SAN JOSE, CALIFORNIA 95124
TEL: (408) 268-9337
FAX: (408) 268-1135



DRAWINGS NOT FOR CONSTRUCTION UNTIL STAMPED JOB COPY BY BUILDING DEPARTMENT. ALL DRAWINGS AND WRITTEN MATERIALS APPEARING HEREIN CONSTITUTE ORIGINAL AND UNPUBLISHED WORK OF THE ENGINEER AND MAY NOT BE DUPLICATED, USED, OR DISCLOSED WITHOUT WRITTEN CONSENT OF THE ENGINEER.

152 AND 156 S. MURPHY AVE. AND 159 S. SUNNYVALE AVE. SUNNYVALE, CA 94086

FIBBAR MCGEE'S RENOVATION
DETAILS

PROJECT:
DRAWING TITLE:
REVIEWED FOR CODE COMPLIANCE
08/21/2023
CSG CONSULTANTS, INC.

REV	DATE	DESCRIPTION
1	4/26/23	PLAN CHECK COMMENTS
2	6/1/23	PLAN CHECK COMMENTS

JOB NO.: 22-121
CAD FILE:
DSGN'D BY: I. R. DRAWN BY: H. N.
CHK'D BY: I. R. APP'D BY: I. R.
DATE: 09/14/22 SCALE: AS NOTED

DRAWING NO.:
M3-4
SHEET * OF *