

5 BRANCH DUCT TAKEOFFS & TRANSITIONS

3 DIFFUSER DETAILS

2 ROUND DUCT HANGER ATTACHMENTS

MECHANICAL SYMBOLS LEGEND

	THERMOSTAT / SENSOR
	FLEXIBLE DUCT
	VOLUME DAMPER
	FIRE DAMPER
	CEILING SUPPLY AIR DIFFUSER
	CEILING RETURN AIR GRILLE
	SIDEWALL AIR DIFFUSER OR GRILLE
	NEW DUCTWORK
	EXISTING DUCTWORK
	CONDENSATE DRAIN
	GAS PIPING
	PIPE TURNING DOWN
	PIPE TURNING UP
	BALL VALVE
	CONNECTION OF NEW TO EXISTING
	CHECK VALVE
	GAS COCK
	STRAINER
	ABOVE FINISHED FLOOR
	EXISTING TO REMAIN
	AIR DEVICE #
	S - SUPPLY
	R - RETURN
	E - EXHAUST
	CFM
FIRE PROTECTION SYMBOLS LEGEND	
	EXISTING SPRINKLER HEAD
	CHROME PENDANT SPRINKLER HEAD
	UPRIGHT SPRINKLER HEAD
	CONCEALED SPRINKLER HEAD
	SIDEWALL SPRINKLER HEAD
PLUMBING SYMBOLS LEGEND	
	COLD WATER
	HOT WATER
	SANITARY DRAIN
	SANITARY VENT
	VENT THROUGH ROOF
	PLUMBING TRAP
	CLEAN OUT
	PRESSURE REGULATING VALVE (PRV) 50 PSI
	COMPRESSED AIR
	FLOOR CLEAN OUT

- A. ALL PIPING AND HEADS SHALL BE INSTALLED PER LATEST EDITION OF NFPA 13. HEAD SPACING SHALL BE BASED UPON THE ORDINARY HAZARD SCHEDULE. ALL SPRINKLER PIPING SHALL BE SCHEDULE 40 BLACK IRON. SCHEDULE 10 PIPING IS PERMISSIBLE IF ACCEPTABLE TO THE LANDLORD. HYDRAULICALLY CALCULATE SYSTEM AND SUBMIT COPIES OF THE CALCULATIONS TO THE AUTHORITY HAVING JURISDICTION AND THE LANDLORD.
- B. PREPARE SHOP DRAWINGS FOR SUBMITTAL TO THE AUTHORITY HAVING JURISDICTION AND THE LANDLORD BEFORE FABRICATION.
- C. TWO COPIES OF THE APPROVED SHOP DRAWINGS SHALL BE SUBMITTED TO THE OWNER AND THE LANDLORD PRIOR TO ISSUANCE OF A CERTIFICATE OF OCCUPANCY.
- D. PROVIDE FOR INSPECTION TESTING AND APPROVAL BY THE AUTHORITY HAVING JURISDICTION AND THE STATE INSPECTION BUREAU AS REQUIRED.
- E. PROVIDE SIGNED CERTIFICATE OF COMPLETION COPIES TO BE GIVEN TO OWNER'S REPRESENTATIVE, INSURANCE REPRESENTATIVE, AND PROJECT OFFICE.
- F. HOLD ALL SPRINKLER LINES AS HIGH AS POSSIBLE TO MAINTAIN 18" CLEARANCE ABOVE STOCK SHELVING.
- G. SPRINKLER HEADS IN SALES AREA SHALL BE CONCEALED TYPE WITH WHITE COVER PLATES. UPRIGHT PENDANT HEADS SHALL BE USED IN ALL AREAS WITHOUT A CEILING. PENDANT HEADS WITH ESCUTCHEON PLATES SHALL BE USED IN ALL STOCKROOM AREAS, RESTROOMS WITH LAY-IN OR GYPSUM BOARD CEILINGS. SPRINKLER HEAD TEMPERATURE RATINGS SHALL BE 165°F IN SALES AND STOCK AREAS AND 212°F IN DISPLAY WINDOWS AND LIGHTING FIXTURE CANOPIES OR AS REQUIRED BY LANDLORD'S INSURANCE AGENCY AND LOCAL AUTHORITIES. SPRINKLER HEADS SHALL BE QUICK RESPONSE TYPE. ALL SEMI-RECESSED AND CONCEALED HEADS SHALL BE WHITE.
- H. VISIT THE SITE AND VERIFY ALL EXISTING CONDITIONS WHICH WILL AFFECT THE WORK. PROVIDE ALL REQUIRED PIPING AND OR REVISIONS TO PIPING AS NEEDED FOR A COMPLETE SPRINKLER SYSTEM WHICH IS APPROVED AND ACCEPTED BY LOCAL AUTHORITIES.
- I. SPRINKLER SHOP DRAWINGS UNDER SEPARATE COVER. SUPPLY SPRINKLER SHOP DRAWINGS AND APPLY TO BUILDING DEPARTMENT (REQUIRED).
- J. LANDLORD DESIGNATED CONTRACTOR TO PERFORM ALL SPRINKLER MODIFICATIONS. SYSTEM MODIFICATIONS SHALL BE SCHEDULED IN ADVANCE WITH THE LANDLORD'S FIELD REPRESENTATIVE. THE SPRINKLER SYSTEM SHALL BE FULLY CHARGED AND OPERATIONAL WHEN THE CONTRACTOR IS OFF THE SITE.
- K. ALL FIRE PROTECTION AND SPRINKLER SYSTEM WORK SHALL BE IN ACCORDANCE WITH MALL'S INSURANCE AGENCY REQUIREMENTS, NFPA, STATE, COUNTY AND LOCAL FIRE MARSHALL.
- L. CENTER SPRINKLER HEADS IN CEILING TILES.

GRILLE, REGISTER, AND DIFFUSER SCHEDULE

MARK	MANUFACTURER	MODEL	FACE TYPE	MOUNTING LOCATION	FACE SIZE (IN)	NOTE
S1	PRICE	RCD	ROUND	DUCT	22"Ø (12"Ø NECK)	A-D
S2	PRICE	RCD	ROUND	DUCT	22"Ø (10"Ø NECK)	A-D
T1	PRICE	630	LOUVERED	WALL	24"x12"	A,B

- NOTES:
- A. BAKED ENAMEL FINISH, WHITE. PAINT PER ARCHITECTS RECOMMENDATIONS.
 - B. PROVIDE NECK FOR DUCT CONNECTION.
 - C. PROVIDE NECK FOR DUCT CONNECTION.
 - D. BRANCH DUCT SIZE SHALL BE SAME AS NECK SIZE UNLESS OTHERWISE SHOWN ON DRAWINGS.

FAN SCHEDULE

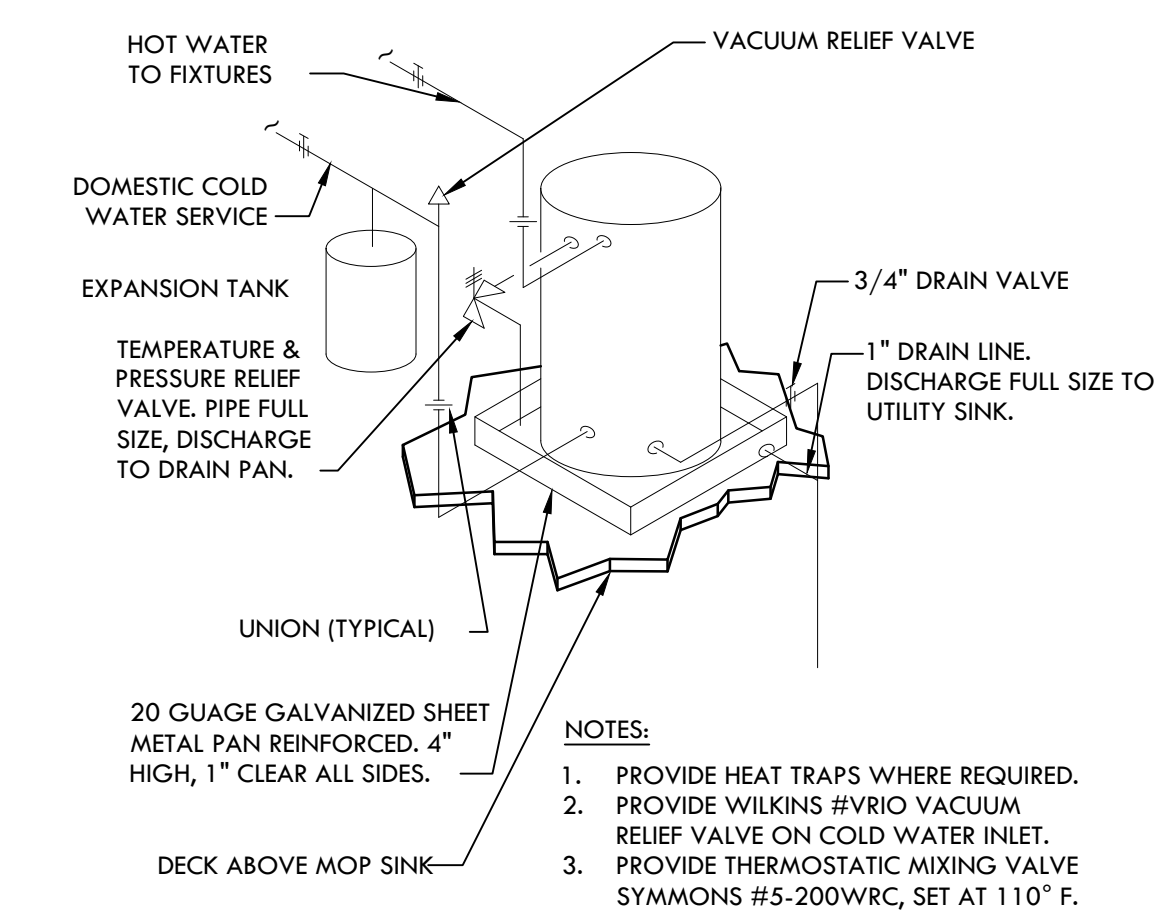
MARK	MANUFACTURER	MODEL	MOUNTING	CFM	ESP (IN)	DRIVE (BELT/DIRECT)	AMPS	ELECTRICAL VOLTS/PH	DISC. TYPE	NOTE
EF-1	BROAN	791LEDM	CEILING	85	0.25	DIRECT	0.5	120/1	SWITCH	A-D

- NOTES:
- A. EXHAUST FAN SHALL BE INTERLOCKED WITH LIGHT SWITCH.
 - B. INSTALL PER MANUFACTURER'S RECOMMENDATIONS.
 - C. PROVIDE WITH BACK DRAFT DAMPER.
 - D. CONNECTED EXHAUST DUCT MUST BE RIGID. NO FLEX DUCT ALLOWED.

PLUMBING FIXTURE SCHEDULE

TAG	MANUFACTURER	MODEL	ACCESSORIES / COMMENTS
EW-H-1	A.O. SMITH	DEL-10	10 GALLON STORAGE TANK. SINGLE ELEMENT HEATER. 3000 WATT, 12.0 F.L.A., 120/1Ø.
IWH-1	EEMAX	SPEX3512	15 GPH RECOVERY RATE @ 80°F. PROVIDE EXPANSION TANK (ET-1) BY AMTROL MODEL ST-5 INSTANTANEOUS, 3.5 KW, 30 AMPS, 120V ELECTRIC WATER HEATER INSTALLED UNDER LAVATORY INSTALL PER MANUFACTURER'S RECOMMENDATIONS. SET OUTLET TEMPERATURE TO 110°F
MS-1	FIAT	FL-1	FIBERGLASS FLOOR SERVICE SINK W/ LEG SUPPORTS. 3" DRAIN, OPEN GRID STRAINER FAUCET: FIAT A-1 DECK FAUCET

- NOTES:
- 1. COORDINATE WITH CONSTRUCTION MANAGER FOR SUBSTITUTIONS.

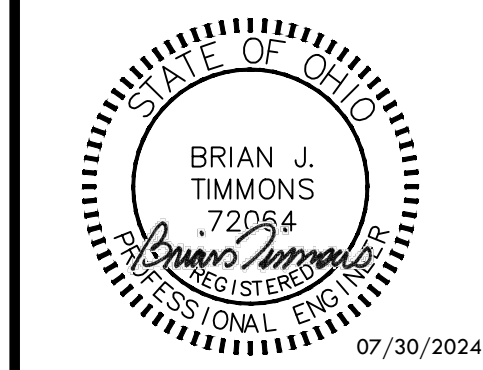


6 WATER HEATER DETAIL

ADDRESS
VERA BRADLEY
CINCINNATI PREMIUM
OUTLETS
958 PREMIUM OUTLETS DR
MONROE, OH 45050



PROFESSIONAL SEAL



DATE: 07/30/24
 APP: TP/GG/BC CT/AR

DESCRIPTION: ORIGINAL ISSUANCE

PROJECT NUMBER: 24131

MECHANICAL SCHEDULES AND DETAILS

M2.0

20 LEGEND

19 FIRE PROTECTION SPECIFICATION

18 HVAC AND PLUMBING SCHEDULES

vera bradley

