

Report By:

National TAB
1329 E. KEMPER ROAD
SUITE 4210
CINCINNATI, OH 45246



Report: TAB REPORT
Function: Test, Adjust, & Balance
Date: 03/25/2025
Completed By: National TAB

PROJECT
SWEATHOUZ RENOVATION (WEST
CHESTER, OH)

7682 VOICE OF AMERICA CT DR

WEST CHESTER , OH 45069

Client

Champion Commercial HVAC

2638 Tem Mile Rd.

Melbourne, KY 41059

National TAB

Project: SWEATHOUZ RENOVATION (WEST CHESTER, OH)

Table Of Contents

| Section | Page # |
|------------------------|--------|
| Equipment Calibrations | 3 |
| Abbreviations | 4 |
| GRD | 5 |
| AHU/RTU | 6 |
| FAN - Exhaust | 12 |



National TAB



Testing, Adjusting, and Balancing Equipment

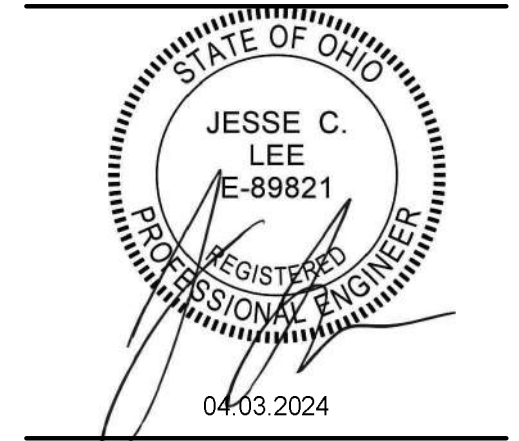
INTELLIGENCE

| Function | | Range | Minimum Accuracy | Instrument Information | Calibration Date | Date Due |
|-------------|-----------------------------------|--------------------------|--------------------------|--------------------------------------|------------------|-----------|
| AIR | AIR PRESSURE | 0 in wg to 10 in wg | 2% +/- 0.001 in wg | Evergreen S-PVF-1 S/N 24D-00271 | 4/9/2024 | 4/9/2025 |
| | AIR VELOCITY INSTRUMENT | 50 fpm to 3900 fpm | +/- 5 % +/- 7 fpm | Evergreen S-PVF-1 S/N 24D-00271 | 4/9/2024 | 4/9/2025 |
| | DIRECT HOOD READING | 100 cfm to 2000 cfm | +/- 5 % +/- 7 cfm | Evergreen S-PVF-1 S/N 24D-00271 | 4/9/2024 | 4/9/2025 |
| TEMPERATURE | AIR METER | -20 F to 240 F | +/- .5 % 2 F | Cooper ATKINS - SRH77A S/N 071118034 | 7/12/2024 | 7/12/2025 |
| | AIR PROBE | -20 F to 240 F | +/- .5 % 2 F | Cooper ATKINS - PD1388 7-6 S/N 5028 | 7/12/2024 | 7/12/2025 |
| | IMMERSION METER | -20 F to 240 F | +/- .5 % 2 F | Cooper ATKINS - SRH77A S/N 071118034 | 7/12/2024 | 7/12/2025 |
| | IMMERSION PROBE | -20 F to 240 F | +/- .5 % 2 F | Cooper ATKINS - PD1388 7-6 S/N 1075 | 7/12/2024 | 7/12/2025 |
| | CONTACT METER | -20 F to 240 F | +/- .5 % 2 F | Cooper ATKINS - SRH77A S/N 071118034 | 7/12/2024 | 7/12/2025 |
| | CONTACT PROBE | -20 F to 240 F | +/- .5 % 2 F | Cooper ATKINS - PD1388 7-6 S/N 4011 | 7/12/2024 | 7/12/2025 |
| HUMIDITY | HUMIDITY PROBE | 10 % RH to 90 % RH | 3% of reading | Cooper ATKINS - SRH77A S/N 071118034 | 7/12/2024 | 7/12/2025 |
| ELECTRICAL | VOLTAGE MEASUREMENT | 0 VAC to 600 VAC | 2 % reading +/- 5 digits | Fluke 373 True RMS, S/N: 33290686 | 7/12/2024 | 7/12/2025 |
| | AMPERAGE MEASUREMENT | 0 Amperes to 100 Amperes | 2 % reading +/- 5 digits | Fluke 373 True RMS, S/N: 33290686 | 7/12/2024 | 7/12/2025 |
| ROTATION | ROTATION MEASUREMENT | 60 rpm to 5000 rpm | 2 % reading 2 rpm | SHIMPO DT-207LR S/N: D1530081R | 7/12/2024 | 7/12/2025 |
| HYDRONIC | PRESSURE MEASUREMENT | -30 in Hg to 200 psi | ±2% of reading +/- 1 psi | Alnor HM675 S/N: 72214041 | 5/2024 | 5/2025 |
| | DIFFERENTIAL PRESSURE MEASUREMENT | 0 psi - 80 psi | ±2% of reading +/- 1 psi | Alnor HM675 S/N: 72214041 | 5/2024 | 5/2025 |



Abbreviation List

| | |
|--|---|
| A = Area (ft ²) | S.F. = Service Factor |
| AHU = Air Handling Unit | SF = Supply Fan |
| A _k = Effective Area | SP = Static Pressure |
| BHP = Brake Horsepower (IP) HP | SR = Supply Register |
| Btu = British Thermal Unit | T = Temperature |
| Btu/h = Btuh = BTUH = BTU/Hour | T _{ma} = Mixed Air Temperature |
| CL = Center Distance (used in belt formula) | T _{oa} = Outside Air Temperature |
| CD = Ceiling Diffuser | T _{ra} = Return Air Temperature |
| CF = Correction Factor | H = Head (in wc, ft wc, psi) |
| CFM = Volumetric Flow: Cubic Feet Per Minute | h = Enthalpy |
| CO ₂ = Carbon Dioxide | HP = Horsepower |
| CO = Carbon Monoxide | hr = Hour |
| C _v = Flow Constant | K _v = Flow constant (SI) |
| d = Diameter (in.) IP | kW = Kilowatt = 1000 Watts |
| Δ = Difference or Change (Final - Initial) | LAT = Leaving Air Temperature |
| DB = Dry Bulb | lb = Pounds |
| EA = Exhaust Air | LWT = Leaving Water Temperature |
| EAT = Entering Air Temperature | ma = Mixed Air |
| EF = Exhaust Fan | MIN = Minimum |
| Eff = Efficiency | MAX = Maximum |
| EG = Exhaust Grille | N/A = Not Applicable |
| ESP = External Static Pressure | NA = No Access |
| EWT = Entering Water Temperature | NL = Not Listed |
| °F = Degrees Fahrenheit, °F | NPSHA = Net Positive Suction Head Available |
| FPB = Fan Powered Box | NS = Not Specified |
| FLA = Full Load Amps | OA = Outside Air |
| fpm = Feet per Minute (fpm) | OAT = Outside Air Temperature |
| ft = Foot | PD = Sheave Pitch Diameter |
| gal = Gallons | P.D. = Pressure Drop |
| GPM = Gallons Per Minute (GPM) | PF = Power Factor |
| h = Enthalpy (BTU/lb dry air) | SG = Supply Grille |
| P = Pressure | SR = Supply Register |
| ppm = parts per million | TP = Total Pressure |
| psi = Pounds Per Square Inch | T _{ra} = Return Air Temperature |
| psid = PSI Differential | TS = Tip Speed (fpm) IP, (m/s) SI |
| r = Radius (in) | TSP = Total Static Pressure |
| % _{ra} = % of Return Air | V = Velocity |
| RA = Return Air | VAV = Variable Air Volume |
| RAT = Return Air Temperature | VD = Volume Damper |
| RF = Return Fan | VFD = Variable Frequency Drive |
| RG = Return Grille | W = Watt |
| RH = Relative Humidity | WB = Wet Bulb |
| RPM = Revolutions Per Minute | wg = wc = water gauge = water column |
| RTU = Roof Top Unit | WHP = Water Horsepower (IP) |
| SA = Supply Air | ω = Humidity Ratio |



| | |
|-------------------|-------|
| MD PROJECT # | 2/021 |
| DRAWN BY | ### |
| CHECKED BY | ### |
| PERMIT SET | ### |
| REVISION SCHEDULE | DATE |
| DESCRIPTION | |

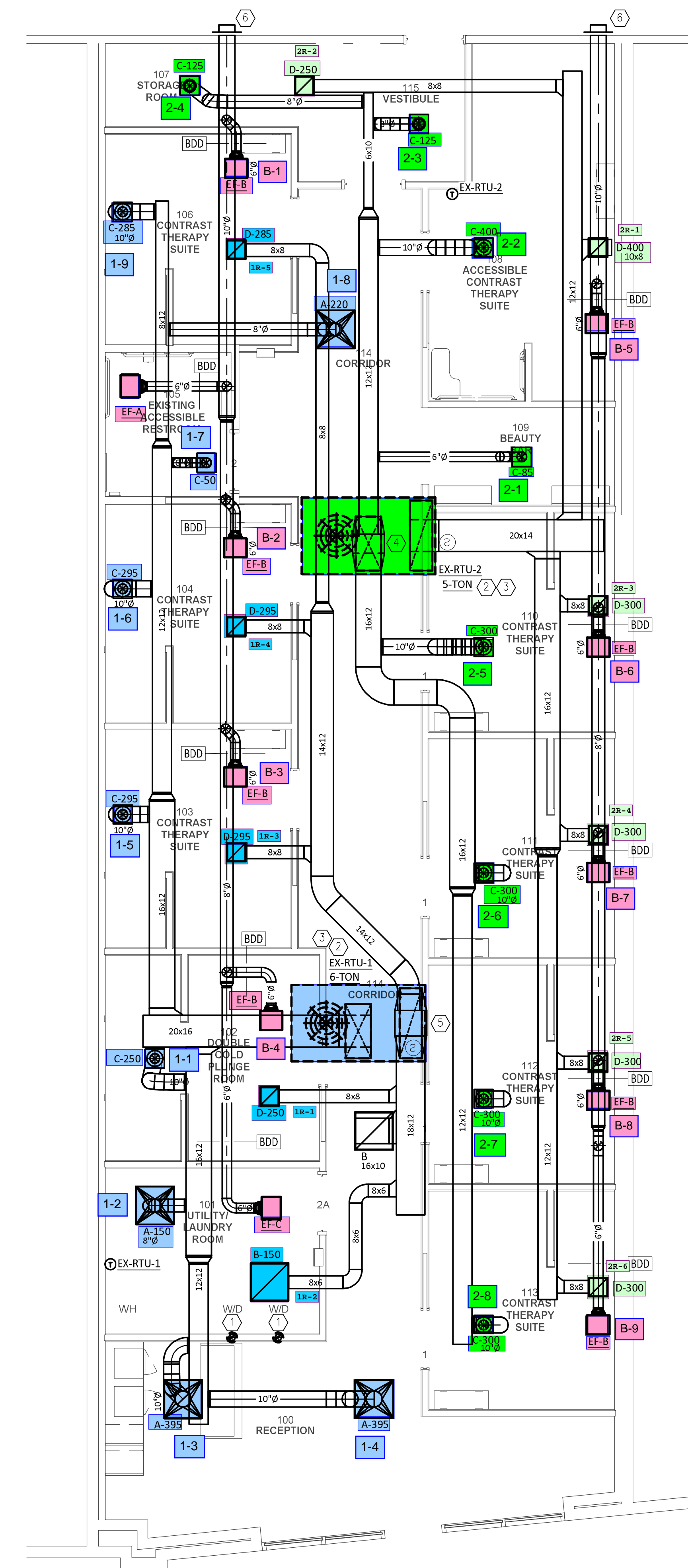
ALL IDEAS, DESIGNS AND PLANS (ORIGINAL WORKS OF AUTHORSHIP FIXED IN A TANGIBLE MEDIUM OF EXPRESSION) INDICATED OR PRESENTED BY THESE DRAWINGS AND DOCUMENTS ARE OWNED BY AND ARE THE PROPERTY OF MITSCH DESIGN. ALL RIGHTS RESERVED, EXCEPT FOR USES EXPRESSLY PERMITTED IN WRITING.

MECHANICAL - PLANS AND NOTES



- KEYNOTES (APPLY TO THIS SHEET ONLY):**
- 4" DRYER EXHAUST DUCT, ROUTE TO EXTERIOR AND TERMINATE ON ROOF WITH ROOF CAP. COORDINATE EXACT LOCATION WITH EQUIPMENT.
 - EXISTING RTU TO REMAIN. INSPECT, CLEAN, AND PROVIDE MAINTENANCE TO ENSURE UNIT FUNCTIONS PER DESIGN INTENT. REPORT ANY DEFECTS TO ENGINEER & OWNER.
 - PROVIDE SMOKE DETECTOR IN RETURN DUCT AS REQUIRED BY CODE IF NOT EXISTING.
 - 20x14 DUCT UP TO EX-RTU-2 ABOVE.
 - 20x16 DUCT UP TO EX-RTU-1 ABOVE.
 - PROVIDE PAINTABLE WALL CAP SIZED AT 0.01"WC FOR EXHAUST DUCT TERMINATIONS. MAINTAIN 3'-0" FROM BUILDING OPENINGS AND 10'-0" FROM BUILDING INTAKES.

- GENERAL NOTES (APPLY TO THIS SHEET ONLY)**
- THERMOSTATS ARE TO BE INSTALLED 44" ON CENTER, TOP OF THERMOSTATS CAN NOT EXCEED 46" AFF.
 - THERMOSTATS TO BE LOCATED AFTER LIGHT SWITCHES WHEN THERE IS A DOOR OR END WALL CONDITION. THERMOSTATS NOT TO BE INSTALLED IN CENTER OF WALLS.
 - PROVIDE ACCESS PANELS IN CEILING WHERE REQUIRED. COORDINATE WITH ARCHITECT.
 - THERMOSTAT JUNCTION BOX TO BE COORDINATED WITH SPEC TO DETERMINE IF BOX IS TO BE INSTALLED IN EITHER THE HORIZONTAL OR VERTICAL ORIENTATION.
 - LINE RETURN DUCT 10' OR THRU THE FIRST TRANSITION.
 - PROVIDE A CABLE OPERATED DAMPER WHERE DUCTS ARE LOCATED ABOVE INACCESSIBLE CEILINGS.
 - PRIOR TO PROJECT COMPLETION ALL EQUIPMENT AND CONTROLS SHALL BE PROVEN TO FUNCTION PER DESIGN INTENT.
 - ROOFTOP UNITS ARE EXISTING TO REMAIN. CLEAN, SERVICE, AND PROVIDE MAINTENANCE AS REQUIRED. REPORT ANY DEFECTS AND DIFFERENCES TO OWNER.



1 FLOOR PLAN - MECHANICAL
 1/4" = 1'-0"
 NORTH

National TAB

Project: SWEATHOUZ RENOVATION (WEST CHESTER, OH)

System/Unit: AHU/RTU



Asset: RTU1

AREA:WEST SIDE OF STORE

| Unit Data | | |
|---------------------|----------|--------------|
| | Design | Actual |
| MFG | N/A | LENNOX |
| Serial Num | - | 5620F04822 |
| Model Num | N/A | ZGB074S4TH1Y |
| Configuration | VERTICAL | VERTICAL |
| Num OA Filters 1 | - | 1 |
| OA Filter Size 1 | - | 27.5x16 |
| Num Final Filter 1 | - | 2 |
| Final Filter Size 1 | - | 16X20X2 |
| Num Final Filter 2 | - | 2 |
| Final Filter Size 2 | - | 20X20X2 |

| Test Data | | |
|--------------------|--------|--------|
| | Design | Actual |
| SF CFM | 2335 | |
| SF RPM | - | |
| RA CFM | 2055 | |
| OA CFM | 280 | |
| RL Voltage | - | |
| RL Amperage | - | |
| OA Damper Position | - | |
| Brake Horse Power | - | |

| Motor Data | | |
|----------------|--------|-----------|
| | Design | Actual |
| Motor MFG | - | NA |
| Frame | - | 56HZ |
| Horsepower | - | 2/0.89 |
| Motor Rpm | - | 1740/1160 |
| Phase | - | 3 |
| Rated Voltage | - | 208-230 |
| Rated Amperage | - | 6.0/3.8 |
| Service Factor | - | 1.15 |

| Performance Data | | |
|-------------------|--------|--------|
| | Design | Actual |
| MA Plenum SP | - | |
| Fan Suction SP | - | |
| Fan Discharge SP | - | |
| Total ESP | 0.50 | |
| Fan Total SP | - | |
| Cooling Coil P.D. | - | |

| Drive Data | |
|--------------------|---------|
| | Actual |
| Motor Sheave Size | 3-3/4" |
| Motor Bore Size | 7/8" |
| Motor Sheave SetPt | |
| Fan Sheave Size | 8" |
| Fan Sheave Bore | 1" |
| Belt CL Distance | 19-1/4" |
| Num of Belts | 1 |
| Belt Size | AX53 |

Unit Data - PHOTO LOG



03/12/2025



03/12/2025



03/12/2025

National TAB

Project: SWEATHOUZ RENOVATION (WEST CHESTER, OH)

AHU/RTU



Diffuser Supply (GRD)

RTU1/WEST SIDE OF STORE

| Asset | | | | | | | |
|------------|---------------------|-----------|------|------------|--------|-----------|-------------|
| Asset Name | Location | Type | Size | DESIGN CFM | CFM(1) | FINAL CFM | % to design |
| RTU1-SGRD1 | PLUNGE ROOM | DOWNBLAST | 10" | 250 | | | - |
| RTU1-SGRD2 | UTILITY/LAUNDRY | DOWNBLAST | 8" | 150 | | | - |
| RTU1-SGRD3 | RECEPTION | DOWNBLAST | 10" | 395 | | | - |
| RTU1-SGRD4 | RECEPTION | DOWNBLAST | 10" | 395 | | | - |
| RTU1-SGRD5 | CONTRAST THERAPY103 | DOWNBLAST | 10" | 295 | | | - |
| RTU1-SGRD6 | CONTRAST THERAPY104 | DOWNBLAST | 10" | 295 | | | - |
| RTU1-SGRD7 | ACCESSIBLE RESTROOM | DOWNBLAST | 6" | 50 | | | - |
| RTU1-SGRD8 | CORRIDOR | DOWNBLAST | 8" | 220 | | | - |
| RTU1-SGRD9 | CONTRAST THERAPY106 | DOWNBLAST | 10" | 285 | | | - |
| Total | | | | 2335 | 0 | 0 | 0% |

Diffuser Ret/Exh (GRD)

RTU1/WEST SIDE OF STORE

| Asset | | | | | | | | | |
|------------|----------|------|------|------------|----|--------|--------|-----------|-------------|
| Asset Name | Location | Type | Size | DESIGN CFM | AK | CFM(1) | CFM(2) | FINAL CFM | % to design |
| RTU1-EGRD1 | 102 | D | 8 | 250 | | | | | - |
| RTU1-EGRD2 | 101 | B | 6 | 150 | | | | | - |
| RTU1-EGRD3 | 103 | D | 8 | 295 | | | | | - |
| RTU1-EGRD4 | 104 | D | 8 | 295 | | | | | - |
| RTU1-EGRD5 | 106 | D | 8 | 285 | | | | | - |
| Total | | | | 1275 | | 0 | 0 | 0 | 0% |

National TAB

Project: SWEATHOUZ RENOVATION (WEST CHESTER, OH)

System/Unit: AHU/RTU



Asset: RTU2

AREA:EAST SIDE OF STORE

| Unit Data | | |
|---------------------|----------|-------------|
| | Design | Actual |
| MFG | N/A | LENNOX |
| Serial Num | - | 5620F04871 |
| Model Num | N/A | ZGB060S4BH1 |
| Configuration | VERTICAL | VERTICAL |
| Num OA Filters 1 | - | 1 |
| OA Filter Size 1 | - | 27.5x16 |
| Num Final Filter 1 | - | 2 |
| Final Filter Size 1 | - | 16X20X2 |
| Num Final Filter 2 | - | 2 |
| Final Filter Size 2 | - | 20X20X2 |

| Motor Data | | |
|----------------|--------|--------|
| | Design | Actual |
| Motor MFG | - | NA |
| Frame | - | NA |
| Horsepower | - | 1 |
| Motor Rpm | - | 1760 |
| Phase | - | 3 |
| Rated Voltage | - | NA |
| Rated Amperage | - | 2.8 |
| Service Factor | - | 1.15 |

| Drive Data | |
|--------------------|---------|
| | Actual |
| Motor Sheave Size | 3-1/4" |
| Motor Bore Size | 7/8" |
| Motor Sheave SetPt | |
| Fan Sheave Size | 4" |
| Fan Sheave Bore | 5/8" |
| Belt CL Distance | 15-3/8" |
| Num of Belts | 1 |
| Belt Size | A39 |

| Test Data | | |
|--------------------|--------|--------|
| | Design | Actual |
| SF CFM | 2335 | |
| SF RPM | - | |
| RA CFM | 2055 | |
| OA CFM | 280 | |
| RL Voltage | - | |
| RL Amperage | - | |
| OA Damper Position | - | |
| Brake Horse Power | - | |

| Performance Data | | |
|-------------------|--------|--------|
| | Design | Actual |
| MA Plenum SP | - | |
| Fan Suction SP | - | |
| Fan Discharge SP | - | |
| Total ESP | 0.50 | |
| Fan Total SP | - | |
| Cooling Coil P.D. | - | |

Unit Data - PHOTO LOG



03/12/2025



03/12/2025



03/12/2025

National TAB

Project: SWEATHOUZ RENOVATION (WEST CHESTER, OH)

AHU/RTU



Diffuser Supply (GRD)

RTU2/EAST SIDE OF STORE

| Asset | | | | | | | |
|------------|--------------------------|-----------|------|------------|--------|-----------|-------------|
| Asset Name | Location | Type | Size | DESIGN CFM | CFM(1) | FINAL CFM | % to design |
| RTU2-SGRD1 | BEAUTY BAR | DOWNBLAST | 6" | 85 | | | - |
| RTU2-SGRD2 | ACCESSIBLE THERAPY SUITE | DOWNBLAST | 10" | 400 | | | - |
| RTU2-SGRD3 | VESTIBULE | DOWNBLAST | 8" | 125 | | | - |
| RTU2-SGRD4 | STORAGE ROOM | DOWNBLAST | 8" | 125 | | | - |
| RTU2-SGRD5 | CONTRAST THERAPY 110 | DOWNBLAST | 10" | 300 | | | - |
| RTU2-SGRD6 | CONTRAST THERAPY 111 | DOWNBLAST | 10" | 300 | | | - |
| RTU2-SGRD7 | CONTRAST THERAPY 112 | DOWNBLAST | 10" | 300 | | | - |
| RTU2-SGRD8 | CONTRAST THERAPY 113 | DOWNBLAST | 10" | 300 | | | - |
| Total | | | | 1935 | 0 | 0 | 0% |

Diffuser Ret/Exh (GRD)

RTU2/EAST SIDE OF STORE

| Asset | | | | | | | | | |
|------------|----------|------|------|------------|----|--------|--------|-----------|-------------|
| Asset Name | Location | Type | Size | DESIGN CFM | AK | CFM(1) | CFM(2) | FINAL CFM | % to design |
| RTU2-EGRD1 | 108 | D | 10 | 400 | | | | | - |
| RTU2-EGRD2 | 115 | D | 8 | 250 | | | | | - |
| RTU2-EGRD3 | 110 | D | 8 | 300 | | | | | - |
| RTU2-EGRD4 | 111 | D | 8 | 300 | | | | | - |
| RTU2-EGRD5 | 112 | D | 8 | 300 | | | | | - |
| RTU2-EGRD6 | 113 | D | 8 | 300 | | | | | - |
| Total | | | | 1850 | | 0 | 0 | 0 | 0% |

National TAB

Project: SWEATHOUZ RENOVATION (WEST CHESTER, OH)

System/Unit: FAN - Exhaust



Asset: EF-A1

AREA: ACCESSIBLE UTILITY CLOSET

| Unit Data | | |
|------------|--------|-----------|
| | Design | Actual |
| MFG | N/A | PENNBARRY |
| Model Num | N/A | NL |
| Serial Num | - | NL |

| Test Data | | |
|-----------|--------|--------|
| | Design | Actual |
| CFM | 70 | 72 |

| Motor Data | | |
|------------------|--------|--------|
| | Design | Actual |
| Motor MFG | - | NL |
| Horsepower | 28W | NL |
| Motor Rpm | 900 | 1200 |
| Phase | 1 | 1 |
| Voltage (rated) | 115 | 115 |
| Amperage (rated) | - | NL |

Completed By: Cody Collett on 03/12/2025

Notes:
Unit label not legible due to being painted over.

Written By: Cody Collett on 03/12/2025

National TAB

Project: SWEATHOUZ RENOVATION (WEST CHESTER, OH)

System/Unit: FAN - Exhaust



Asset: EF-B1

AREA:

| Unit Data | | |
|------------|--------|-----------|
| | Design | Actual |
| MFG | N/A | PENNBARRY |
| Model Num | N/A | NL |
| Serial Num | - | NL |

| Test Data | | |
|-----------|--------|--------|
| | Design | Actual |
| CFM | 50 | 50 |

| Motor Data | | |
|------------------|--------|--------|
| | Design | Actual |
| Motor MFG | - | NL |
| Horsepower | 28W | NL |
| Motor Rpm | 900 | 1200 |
| Phase | 1 | 1 |
| Voltage (rated) | 115 | 115 |
| Amperage (rated) | - | NL |

Completed By: Cody Collett on 03/12/2025

Notes:
Unit label not legible due to being painted over.

Written By: Cody Collett on 03/12/2025

National TAB

Project: SWEATHOUZ RENOVATION (WEST CHESTER, OH)

System/Unit: FAN - Exhaust



Asset: EF-B2

AREA:

| Unit Data | | |
|------------|--------|-----------|
| | Design | Actual |
| MFG | NA | PENNBARRY |
| Model Num | NA | NL |
| Serial Num | - | NL |

| Test Data | | |
|-----------|--------|--------|
| | Design | Actual |
| CFM | 50 | 49 |

| Motor Data | | |
|------------------|--------|--------|
| | Design | Actual |
| Motor MFG | - | NL |
| Horsepower | 28W | NL |
| Motor Rpm | 900 | 1200 |
| Phase | 1 | 1 |
| Voltage (rated) | 115 | 115 |
| Amperage (rated) | - | NL |

Completed By: Cody Collett on 03/12/2025

Notes:
Unit label not legible due to being painted over.

Written By: Cody Collett on 03/12/2025

National TAB

Project: SWEATHOUZ RENOVATION (WEST CHESTER, OH)

System/Unit: FAN - Exhaust



Asset: EF-B3

AREA:

| Unit Data | | |
|------------|--------|-----------|
| | Design | Actual |
| MFG | NA | PENNBARRY |
| Model Num | NA | NL |
| Serial Num | - | NL |

| Test Data | | |
|-----------|--------|--------|
| | Design | Actual |
| CFM | 50 | 47 |

| Motor Data | | |
|------------------|--------|--------|
| | Design | Actual |
| Motor MFG | - | NL |
| Horsepower | 28W | NL |
| Motor Rpm | 900 | 1200 |
| Phase | 1 | 1 |
| Voltage (rated) | 115 | 115 |
| Amperage (rated) | - | NL |

Completed By: Cody Collett on 03/12/2025

Notes:
Unit label not legible due to being painted over.

Written By: Cody Collett on 03/12/2025

National TAB

Project: SWEATHOUZ RENOVATION (WEST CHESTER, OH)

System/Unit: FAN - Exhaust



Asset: EF-B4

AREA:

| Unit Data | | |
|------------|--------|-----------|
| | Design | Actual |
| MFG | NA | PENNBARRY |
| Model Num | NA | NL |
| Serial Num | - | NL |

| Test Data | | |
|-----------|--------|--------|
| | Design | Actual |
| CFM | 50 | 59 |

| Motor Data | | |
|------------------|--------|--------|
| | Design | Actual |
| Motor MFG | - | NL |
| Horsepower | 28W | NL |
| Motor Rpm | 900 | 1200 |
| Phase | 1 | 1 |
| Voltage (rated) | 115 | 115 |
| Amperage (rated) | - | NL |

Completed By: Cody Collett on 03/12/2025

Notes:

Unable to reduce CFM, Fan set to lowest speed setpoint.

Unit label not legible due to being painted over.

Written By: Cody Collett on 03/12/2025

National TAB

Project: SWEATHOUZ RENOVATION (WEST CHESTER, OH)

System/Unit: FAN - Exhaust



Asset: EF-B5

AREA:

| Unit Data | | |
|------------|--------|------------|
| | Design | Actual |
| MFG | NA | GREENHECK |
| Model Num | NA | SP-A190-QD |
| Serial Num | - | 21276134 |

| Test Data | | |
|-----------|--------|--------|
| | Design | Actual |
| CFM | 50 | |

| Motor Data | | |
|------------------|--------|-----------|
| | Design | Actual |
| Motor MFG | - | GREENHECK |
| Horsepower | 28W | NL |
| Motor Rpm | 900 | NL |
| Phase | 1 | 1 |
| Voltage (rated) | 115 | 115 |
| Amperage (rated) | - | NL |

Notes:

Does not have speed controller. Not properly sealed to ceiling.

Written By: Cody Collett on 03/12/2025

National TAB

Project: SWEATHOUZ RENOVATION (WEST CHESTER, OH)

System/Unit: FAN - Exhaust



Asset: EF-B6

AREA:

| Unit Data | | |
|------------|--------|------------|
| | Design | Actual |
| MFG | NA | PENNBARRY |
| Model Num | NA | NL |
| Serial Num | - | L24ZZ71734 |

| Test Data | | |
|-----------|--------|--------|
| | Design | Actual |
| CFM | 50 | 47 |

| Motor Data | | |
|------------------|--------|--------|
| | Design | Actual |
| Motor MFG | - | NL |
| Horsepower | 28W | NL |
| Motor Rpm | 900 | 1200 |
| Phase | 1 | 1 |
| Voltage (rated) | 115 | 115 |
| Amperage (rated) | - | NL |

Completed By: Cody Collett on 03/12/2025

Notes:
Unit label not legible due to being painted over.

Written By: Cody Collett on 03/12/2025

National TAB

Project: SWEATHOUZ RENOVATION (WEST CHESTER, OH)

System/Unit: FAN - Exhaust



Asset: EF-B7

AREA:

| Unit Data | | |
|------------|--------|-----------|
| | Design | Actual |
| MFG | NA | PENNBARRY |
| Model Num | NA | NL |
| Serial Num | - | NL |

| Test Data | | |
|-----------|--------|--------|
| | Design | Actual |
| CFM | 50 | 49 |

| Motor Data | | |
|------------------|--------|--------|
| | Design | Actual |
| Motor MFG | - | NL |
| Horsepower | 28W | NL |
| Motor Rpm | 900 | 1200 |
| Phase | 1 | 1 |
| Voltage (rated) | 115 | 115 |
| Amperage (rated) | - | NL |

Completed By: Cody Collett on 03/12/2025

Notes:
Unit label not legible due to being painted over.

Written By: Cody Collett on 03/12/2025

National TAB

Project: SWEATHOUZ RENOVATION (WEST CHESTER, OH)

System/Unit: FAN - Exhaust



Asset: EF-B8

AREA:

| Unit Data | | |
|------------|--------|-----------|
| | Design | Actual |
| MFG | NA | PENNBARRY |
| Model Num | NA | NL |
| Serial Num | - | NL |

| Test Data | | |
|-----------|--------|--------|
| | Design | Actual |
| CFM | 50 | 51 |

| Motor Data | | |
|------------------|--------|--------|
| | Design | Actual |
| Motor MFG | - | NL |
| Horsepower | 28W | NL |
| Motor Rpm | 900 | 1200 |
| Phase | 1 | 1 |
| Voltage (rated) | 115 | 115 |
| Amperage (rated) | - | NL |

Completed By: Cody Collett on 03/12/2025

Notes:
Unit label not legible due to being painted over.

Written By: Cody Collett on 03/12/2025

National TAB

Project: SWEATHOUZ RENOVATION (WEST CHESTER, OH)

System/Unit: FAN - Exhaust



Asset: EF-B9

AREA:

| Unit Data | | |
|------------|--------|-----------|
| | Design | Actual |
| MFG | NA | PENNBARRY |
| Model Num | NA | NL |
| Serial Num | - | NL |

| Test Data | | |
|-----------|--------|--------|
| | Design | Actual |
| CFM | 50 | 63 |

| Motor Data | | |
|------------------|--------|--------|
| | Design | Actual |
| Motor MFG | - | NL |
| Horsepower | 28W | NL |
| Motor Rpm | 900 | 1200 |
| Phase | 1 | 1 |
| Voltage (rated) | 115 | 115 |
| Amperage (rated) | - | NL |

Completed By: Cody Collett on 03/12/2025

Notes:

Unable to reduce CFM, fan set to lowest speed setpoint.

Unit label not legible due to being painted over.

Written By: Cody Collett on 03/12/2025

National TAB

Project: SWEATHOUZ RENOVATION (WEST CHESTER, OH)

System/Unit: FAN - Exhaust



Asset: EF-C1

AREA:UTILITY CLOSET

| Unit Data | | |
|------------|--------|-----------|
| | Design | Actual |
| MFG | N/A | PENNBARRY |
| Model Num | N/A | NL |
| Serial Num | - | NL |

| Test Data | | |
|-----------|--------|--------|
| | Design | Actual |
| CFM | 50 | 45 |

| Motor Data | | |
|------------------|--------|--------|
| | Design | Actual |
| Motor MFG | - | NL |
| Horsepower | 28W | NL |
| Motor Rpm | 900 | 1200 |
| Phase | 1 | 1 |
| Voltage (rated) | 115 | 115 |
| Amperage (rated) | - | NL |

Completed By: Cody Collett on 03/12/2025