

Report By:

**National TAB
1329 E Kemper Rd, Ste 4210
Cincinnati, OH 45246**



**Report: Renew
Date: 8/21/2021**

PROJECT

FREDDY'S - NORTH OAK TRAFFICWAY - RENEW 2FB (4)

5150 N. Oak Trafficway
Kansas City, MO 64118

Client

**Freddy's Frozen Custard & Steakburgers (CORPORATE)
260 N Rock Rd
Suite 200
Wichita, KS 67206**

Powered by



FACILIBUILD

www.facilibuild.com

National TAB

Project: FREDDY'S - NORTH OAK TRAFFICWAY - RENEW 2FB (4)

Table Of Contents

Section	Page #
Recommendation List	3
Site Pictures	4
Summary Data	9
Checklist Data	10
AHU/RTU	13
FAN - Supply	16
FAN - Exhaust	17
COIL - DX	21

RECOMMENDATION LIST

Assigned Organization: National TAB

Status: Not Submitted

Asset:

RECOMMENDATION (CLEAN/REPAIR/REPLACE/INFO)	
INFO	No issues to report.

Notes/Comments:

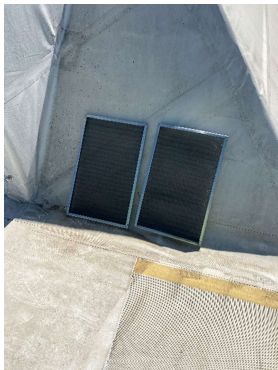
MAU
DIRTY OUTSIDE AIR FILTERS



MAU
CLEAN OUTSIDE AIR FILTERS



RTU-1 (DINING)
DIRTY OUTSIDE AIR FILTERS



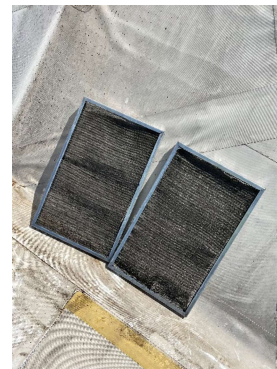
RTU-1 (DINING)
CLEAN OUTSIDE AIR FILTERS



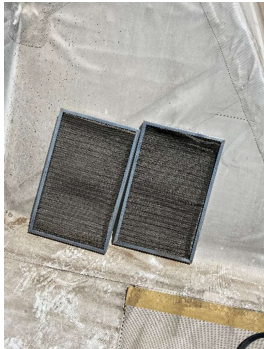
RTU-2 (DINING)
DIRTY OUTSIDE AIR FILTERS



RTU-2 (DINING)
CLEAN OUTSIDE AIR FILTERS



RTU-3 (KITCHEN)
DIRTY OUTSIDE AIR FILTERS



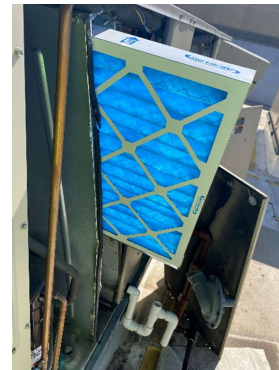
RTU-3 (KITCHEN)
CLEAN OUTSIDE AIR FILTERS



RTU-1 (DINING)
DIRTY EVAPORATOR FILTERS



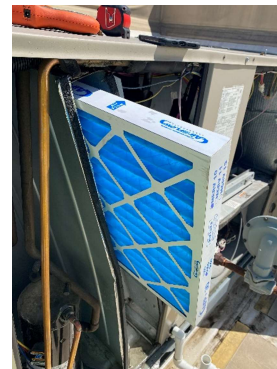
RTU-1 (DINING)
CLEAN EVAPORATOR FILTERS



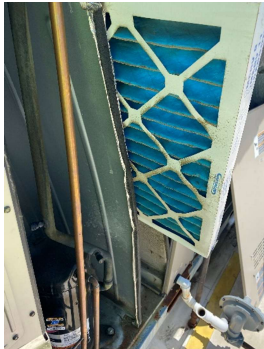
RTU-2 (DINING)
DIRTY EVAPORATOR FILTERS



RTU-2 (DINING)
CLEAN EVAPORATOR FILTERS



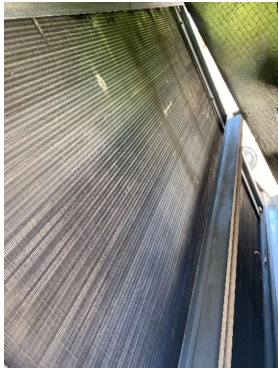
RTU-3 (KITCHEN)
DIRTY EVAPORATOR FILTERS



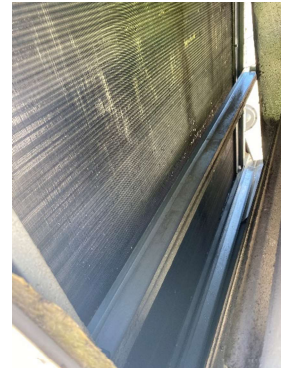
RTU-3 (KITCHEN)
DIRTY EVAPORATOR FILTERS



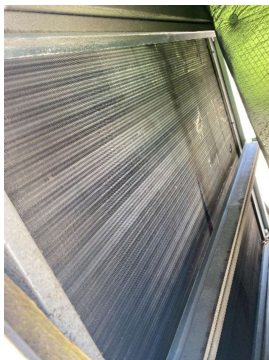
RTU-1 (DINING)
DIRTY EVAPORATOR



RTU-1 (DINING)
CLEAN EVAPORATOR



RTU-2 (DINING)
DIRTY EVAPORATOR



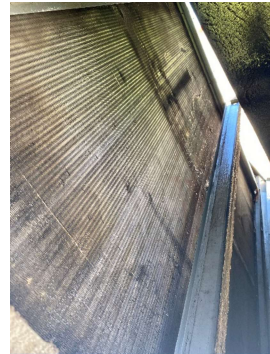
RTU-2 (DINING)
CLEAN EVAPORATOR



RTU-3 (KITCHEN)
DIRTY EVAPORATOR



RTU-3 (KITCHEN)
CLEAN EVAPORATOR



RTU-1 (DINING)
P-TRAP



DXC-1 (WALK-IN COOLER)
DIRTY CONDENSER



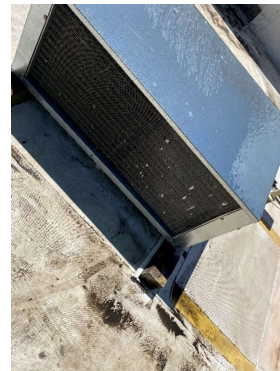
DXC-1 (WALK-IN COOLER)
CLEAN CONDENSER



DXC-1 (WALK-IN FREEZER)
DIRTY CONDENSER



DXC-1 (WALK-IN FREEZER)
CLEAN CONDENSER



Project Summary

The purpose of the visit is to perform preventative maintenance for the store. We change belts and filters, clean evaporators and condenser, and check refrigeration and heating cycle where possible. We also, check and set exhaust, outside air, and make up air coming in out of the build to the engineer's design and/or to make the space as comfortable and healthy as possible. All of this ensures a healthy and comfortable space, extends service life of units, and reduces the number of future repairs by prevention.

Freddy's locations for preventative maintenance are done in a pair. This allows two stores preventative maintenance to be completed in one day. To accomplish this the food equipment will be cleaned every 6 months. So, every other visit to a store the food equipment will be evaluated and cleaned. Food equipment was evaluated this trip.

RTUs: There evaporator coil was rinsed off and cleaned. During warmer months a self-cleaning chemical is sprayed on the evaporator. The outside air filters were rinsed off to remove any dirty, so the unit stays at the designated outside air set point. Based on static pressures, amps, and fan rpm it shows that the total supply has not changed since the last test and balance.

MAU: The intake filters had slight dirt accumulation. They were washed.

All exhaust fans were cleaned out on the roof. The vents to the motor were cleaned so they can vent properly.

Food equipment condensers were cleaned. The Walk-In evaporator were cleaned. All equipment is in good health unless stated in the Recommendation List.

All issues found are reported in the Recommendation list at the start of the report.

BUILDING PRESSURE SET POINTS

Assigned Organization: National TAB

Status: Not Submitted

Asset:

INITIAL AIRFLOWS:	
OA RTU-1 (DINING)	546
OA RTU-2 (DINING)	500
OA RTU-3 (KITCHEN)	620
KEF-1 (GRIDDLE)	2061
KEF-2 (FRYER)	792
KEF-3 (DISH)	765
EF-1 (RESTROOM)	112
EF-2 (RESTROOM)	126
MAU-1	2130
TOTAL EXHUAUST	3856
TOTAL SUPPLY	3796
NET AIRFLOW	-60
BUILDING PRESSURE (in W.C.)	
INITIAL BUILDING PRESSURE	-0.17
FINAL BUILDING PRESSURE	0.0016

Notes/Comments:

PM CHECKLIST: FOOD

Assigned Organization: National TAB

Status: Not Submitted

Asset:

WALK-IN PM CHECKLIST	
Are the doors clear of frost build up?	YES
Are the evaporators clear of frost build up?	YES
Are the walls clear of frost build up?	YES
Are the penetrations and lines clear of frost build up?	YES
Are all evaporator fans running?	YES
GENERAL FOOD EQUIPMENT	
Are the units clear of frost?	YES
Are the prefilters on the condensers clear/replaced?	YES
Are the condensate drains clear of debris (If applicable)?	YES

Notes/Comments:

PM CHECKLIST: HVAC

Assigned Organization: National TAB

Status: Not Submitted

Asset:

HOOD CHECKLIST	
Smoke test capture - Perimeter of hood	YES
Smoke test capture - Top of cooking surface	YES
Hoods turn on by switch or HMI?	SWITCH
Are the hoods "FAN ON BY BUTTON" upon arrival?	YES
RTU PM CHECKLIST	
Outside air fliter clean?	YES
Evaporator Filters Replaced?	YES
Evaporator Coil cleaned?	YES
Condenser cleaned? (Seasonal)	YES
Belt replaced in last 6 months?	YES
Motor ventilation cleared of dust and debris?	YES
MAU PM CHECKLIST	
Outside air fliter clean?	YES
Belt replaced in last 6 months?	YES
EXHUAST FAN PM CHECKLIST	
Motor ventilation cleared of dust and debris?	YES
Belt replaced in last 6 months?	YES
Motor ventilation cleared of dust and debris?	YES
THERMOSTAT CHECKLIST	
Are the thermostats in fan "ON" position upon arrival?	YES
Are the thermostats prograded?	YES
ADDITIONAL	
Manager on Duty at time of completion.	
Is the roof free of debris? if not what was left on the roof?	YES

Notes/Comments:

System/Unit: AHU/RTU

Asset: RTU1

AREA: DINING

Unit Data		
	Design	Actual
MFG	LENNOX	LENNOX
Model Num	KGA092S4B	KGA092S4B
Serial Num	-	5615A05862
Num OA Filters 1	-	2
OA Filter Size 1	-	23.5X15
Num Final Filter 1	-	4
Final Filter Size 1	-	20X25X2
Num Final Filter 2	-	
Final Filter Size 2	-	

Motor Data		
	Design	Actual
Motor MFG	-	INTERLINK
Frame	-	56HZ
Horsepower	-	2
Motor Rpm	-	1755
Phase	-	3
Rated Voltage	-	200-230
Rated Amperage	-	5.6-5.8

Drive Data		
	Design	Actual
Num of Belts	-	1
Belt Size	-	AX55
Belt Alignment	-	VERIFIED GOOD

Test Data		
	Design	Actual
SF RPM	-	820
OA CFM	-	546
RL Voltage	-	211/211/214
RL Amperage	-	5.3/5.6/5.4

Performance Data		
	Design	Actual
MA Plenum SP	-	-0.23
Fan Suction SP	-	-0.48
Fan Discharge SP	-	0.87
Total ESP	-	1.10"
Fan Total SP	-	1.35"

General		
	Design	Actual
Unit free of Damage	-	YES
Unit Completely Assembled	-	YES
Unit Leveled	-	YES
Curb & Unit Installed Air Tight	-	YES
Controls Complete	-	YES
Unit Filters Clean	-	YES
Evap Coil Clean	-	YES
Evap Coil Free of Frost	-	YES
Condensor Coil Clean	-	YES
Condensor Fins Straight	-	YES
Refr Sight Glass Dry	-	NA
Condensate Drain Installed	-	YES
Crankcase Heaters Operate	-	YES

Completed By: Andrew Becerra on 08/12/2021

Notes:

System/Unit: AHU/RTU

Asset: RTU2

AREA: DINING

Unit Data		
	Design	Actual
MFG	LENNOX	LENNOX
Model Num	KGA092S4B	KGA092S4BS2Y
Serial Num	-	56165A11878
Num OA Filters 1	-	2
OA Filter Size 1	-	23.5X14
Num Final Filter 1	-	4
Final Filter Size 1	-	20X25X2
Num Final Filter 2	-	
Final Filter Size 2	-	

Motor Data		
	Design	Actual
Motor MFG	-	INTERLINK
Frame	-	56HZ
Horsepower	-	3
Motor Rpm	-	1755
Phase	-	3
Rated Voltage	-	200-230
Rated Amperage	-	5.6-5.8

Drive Data		
	Design	Actual
Num of Belts	-	1
Belt Size	-	AX55
Belt Alignment	-	VERIFIED GOOD

Test Data		
	Design	Actual
SF RPM	-	783
OA CFM	-	500
RL Voltage	-	209/209/209
RL Amperage	-	4.8/5.2/5.2

Performance Data		
	Design	Actual
MA Plenum SP	-	-0.23
Fan Suction SP	-	0.33
Fan Discharge SP	-	0.70
Total ESP	-	0.93"
Fan Total SP	-	1.03"

General		
	Design	Actual
Unit free of Damage	-	YES
Unit Completely Assembled	-	YES
Unit Leveled	-	YES
Curb & Unit Installed Air Tight	-	YES
Controls Complete	-	YES
Unit Filters Clean	-	YES
Evap Coil Clean	-	YES
Evap Coil Free of Frost	-	YES
Condensor Coil Clean	-	YES
Condensor Fins Straight	-	YES
Refr Sight Glass Dry	-	NA
Condensate Drain Installed	-	YES
Crankcase Heaters Operate	-	YES

Completed By: Andrew Becerra on 08/12/2021

Notes:

System/Unit: AHU/RTU

Asset: RTU3

AREA: KITCHEN

Unit Data		
	Design	Actual
MFG	LENNOX	LENNOX
Model Num	KGA150S4B	KGA150S4B
Serial Num	-	5614H14647
Num OA Filters 1	-	2
OA Filter Size 1	-	23.5X14
Num Final Filter 1	-	4
Final Filter Size 1	-	20X25X2
Num Final Filter 2	-	
Final Filter Size 2	-	

Motor Data		
	Design	Actual
Motor MFG	-	NIDEC
Frame	-	184TZ
Horsepower	-	5
Motor Rpm	-	1765
Phase	-	3
Rated Voltage	-	208
Rated Amperage	-	13.8-13.0

Drive Data		
	Design	Actual
Num of Belts	-	1
Belt Size	-	BX57
Belt Alignment	-	VERIFIED GOOD

Test Data		
	Design	Actual
SF RPM	-	968
OA CFM	-	620
RL Voltage	-	208/208/209
RL Amperage	-	9.8/10.1/10.3

Performance Data		
	Design	Actual
MA Plenum SP	-	-0.34
Fan Suction SP	-	-0.68
Fan Discharge SP	-	0.66
Total ESP	-	1.00
Fan Total SP	-	1.34

General		
	Design	Actual
Unit free of Damage	-	YES
Unit Completely Assembled	-	YES
Unit Leveled	-	YES
Curb & Unit Installed Air Tight	-	YES
Controls Complete	-	YES
Unit Filters Clean	-	YES
Evap Coil Clean	-	YES
Evap Coil Free of Frost	-	YES
Condensor Coil Clean	-	YES
Condensor Fins Straight	-	YES
Refr Sight Glass Dry	-	NA
Condensate Drain Installed	-	YES
Crankcase Heaters Operate	-	YES

Completed By: Andrew Becerra on 08/12/2021

Notes:

System/Unit: FAN - Supply

Asset: MAU1

AREA: KITCHEN HOODS

Unit Data		
	Design	Actual
MFG	CAPTIVE-AIRE	CAPITVE AIRE
Model Num	A1.D.250-G10	A1.D.250-G10
Serial Num	-	2091854
Num Filters Size 1	-	6
Filter Size 1	-	16X20X2
Num Filters Size 2	-	
Filter Size 2	-	

Test Data		
	Design	Actual
CFM	-	2130
SF RPM	-	1427
Motor RPM	-	1755
RL Voltage	-	208/208/207
RL Amperage	-	3.2/3.3/3.8

Motor Data		
	Design	Actual
Motor MFG	-	WEG
Frame	-	56HZ
Horsepower	-	2
Motor Rpm	-	1740
Phase	-	3
Voltage (rated)	-	208-230/460
Amperage (rated)	-	6.88-6.22/3.11
Service Factor	-	1.15

General		
	Design	Actual
Unit free of Damage	-	YES
Curb & Unit Installed Air Tight	-	YES
Fan Rotation Correct	-	YES
Fan Belt Condition	-	YES
Unit Filters Clean	-	YES

Drive Data		
	Design	Actual
Num of Belts	-	1
Belt Size	-	AX38
Belt Alignment Verified	-	VERIFIED GOOD

Gas Heat		
	Design	Actual
Gas Type	-	NATURAL GAS
Burner Type	-	BURNER TUBE
Heater Operates (y/n)	-	SEASONAL
Flame Status (pass/fail)	-	SEASONAL
Inlet Air Temp SetPt	-	55
Discharge Air Temp SetPt	-	60
Air Flow Switch SP Actual	-	0.53"

Completed By: Andrew Becerra on 08/12/2021

Notes:

System/Unit: FAN - Exhaust

Asset: EF1

AREA: MEN'S RESTROOM

Unit Data		
	Design	Actual
MFG	COOK	COOK
Model Num	GC-164	GEMINI 160
Serial Num	-	NL

Test Data		
	Design	Actual
CFM	150	126

Motor Data		
	Design	Actual
Motor MFG	-	QUEACE
Horsepower	-	18W
Motor Rpm	-	NL
Phase	-	1
Voltage (rated)	-	115
Amperage (rated)	-	0.51

Completed By: Andrew Becerra on 08/12/2021

Notes:

System/Unit: FAN - Exhaust

Asset: EF2

AREA: WOMEN'S RESTROOM

Unit Data		
	Design	Actual
MFG	COOK	COOK
Model Num	GC-164	GEMINI 160
Serial Num	-	NL

Test Data		
	Design	Actual
CFM	150	112

Motor Data		
	Design	Actual
Motor MFG	-	QUEACE
Horsepower	-	18W
Motor Rpm	-	1100
Phase	-	1
Voltage (rated)	-	115
Amperage (rated)	-	0.51

Completed By: Andrew Becerra on 08/12/2021

Notes:

System/Unit: FAN - Exhaust

Asset: KEF1

AREA: HOOD 1 A&B

Unit Data		
	Design	Actual
MFG	CAPTIVE-AIRE	CAPTIVE-AIRE
Model Num	NCA16HPFA	NCA16HPFA
Serial Num	-	2091854
Type	-	UPBLAST
Configuration	-	VERTICAL

Motor Data		
	Design	Actual
Motor MFG	-	WEG
Frame	-	56HZ
Horsepower	-	1.5
Motor Rpm	-	1745
Phase	-	3
Voltage (rated)	-	208-230/460
Amperage (rated)	-	5.09-4.40/2.30
Service Factor	-	1.15

Drive Data		
	Design	Actual
Num of Belts	-	1
Belt Size	-	AX23
Belt Alignment Verified	-	VERIFIED GOOD

Completed By: Andrew Becerra on 08/12/2021

Notes:

Test Data		
	Design	Actual
CFM	-	2061
Fan RPM	-	1361
Fan Rotation	-	CCW
Motor RPM	-	1745
RL Voltage	-	208/208/209
RL Amperage	-	4.2/4.4/4.3
Suction ESP	-	1.07"
Discharge ESP	-	ATM
Total ESP	-	1.07"

System/Unit: FAN - Exhaust

Asset: KEF2

AREA: HOOD 2

Unit Data		
	Design	Actual
MFG	CAPTIVE-AIRE	CAPTIVE-AIRE
Model Num	DU50HFA	DU50HFA
Serial Num	-	2091854
Type	-	UPBLAST
Configuration	-	VERTICAL

Motor Data		
	Design	Actual
Motor MFG	-	HSSA
Frame	-	NL
Horsepower	-	.5
Motor Rpm	-	1380
Phase	-	1
Voltage (rated)	-	115/230
Amperage (rated)	-	7.6/3.8
Service Factor	-	NL

Test Data		
	Design	Actual
CFM	-	792
Fan RPM	-	DD
Fan Rotation	-	CCW
Motor RPM	-	DD
System SetPt	-	84
RL Voltage	-	84
RL Amperage	-	4.0
Total ESP	-	0.62"
Fan Inlet SP	-	ATM
Fan Discharge SP	-	0.62"

Completed By: Andrew Becerra on 08/12/2021

Notes:

System/Unit: COIL - DX

Asset: DXC1

AREA: WALK-IN COOLER

Unit Data		
	Design	Actual
MFG	NA	THERMIAL RITE
Model Num	NA	E225993
Serial Num	-	23078-01

General		
	Design	Actual
Evap Coil Clean	-	YES
Evap Coil Fins Straight	-	YES
Evap Coil Free of Frost	-	YES
Condensor Coil Clean	-	YES
Condensor Fins Straight	-	YES
Condensate Drain Installed	-	YES
Crankcase Heaters Operate	-	YES

Completed By: Andrew Becerra on 08/12/2021

Notes:

System/Unit: COIL - DX

Asset: DXC2

AREA: MEAT COOLER 1

Unit Data		
	Design	Actual
MFG	NA	HOSHIZAKI AMERICA
Model Num	NA	CRMR27-12M
Serial Num	-	E50349B

General		
	Design	Actual
Evap Coil Clean	-	YES
Evap Coil Fins Straight	-	YES
Evap Coil Free of Frost	-	YES
Condensor Coil Clean	-	YES
Condensor Fins Straight	-	YES
Condensate Drain Installed	-	YES
Crankcase Heaters Operate	-	NA

Completed By: Andrew Becerra on 08/12/2021

Notes:

System/Unit: COIL - DX

Asset: DXC3

AREA: MEAT COOLER 2

Unit Data		
	Design	Actual
MFG	NA	HOSHIZAKI AMERICA
Model Num	NA	CRMR27-12M
Serial Num	-	E50338A

General		
	Design	Actual
Evap Coil Clean	-	YES
Evap Coil Fins Straight	-	YES
Evap Coil Free of Frost	-	YES
Condensor Coil Clean	-	YES
Condensor Fins Straight	-	YES
Condensate Drain Installed	-	YES
Crankcase Heaters Operate	-	NA

Completed By: Andrew Becerra on 08/12/2021

Notes:

System/Unit: COIL - DX

Asset: DXC4

AREA: PREP TABLE

Unit Data		
	Design	Actual
MFG	NA	HOSHIZAKI AMERICA
Model Num	NA	9040K-7
Serial Num	-	W297831-11

General		
	Design	Actual
Evap Coil Clean	-	YES
Evap Coil Fins Straight	-	YES
Evap Coil Free of Frost	-	YES
Condensor Coil Clean	-	YES
Condensor Fins Straight	-	YES
Condensate Drain Installed	-	YES
Crankcase Heaters Operate	-	NA

Completed By: Andrew Becerra on 08/12/2021

Notes:

System/Unit: COIL - DX

Asset: DXC5

AREA: FRYER FREEZER

Unit Data		
	Design	Actual
MFG	NA	HOSHIZAKI AMERICA
Model Num	NA	CF1B-HS
Serial Num	-	E50431C

General		
	Design	Actual
Evap Coil Clean	-	YES
Evap Coil Fins Straight	-	YES
Evap Coil Free of Frost	-	YES
Condensor Coil Clean	-	YES
Condensor Fins Straight	-	YES
Condensate Drain Installed	-	YES
Crankcase Heaters Operate	-	NA

Completed By: Andrew Becerra on 08/12/2021

Notes:

System/Unit: COIL - DX

Asset: DXC6

AREA: SUNDAE PREP

Unit Data		
	Design	Actual
MFG	NA	HOSHIZAKI AMERICA
Model Num	NA	CR1B-HS
Serial Num	-	E50261C

General		
	Design	Actual
Evap Coil Clean	-	YES
Evap Coil Fins Straight	-	YES
Evap Coil Free of Frost	-	YES
Condensor Coil Clean	-	YES
Condensor Fins Straight	-	YES
Condensate Drain Installed	-	YES
Crankcase Heaters Operate	-	NA

Completed By: Andrew Becerra on 08/12/2021

Notes: