

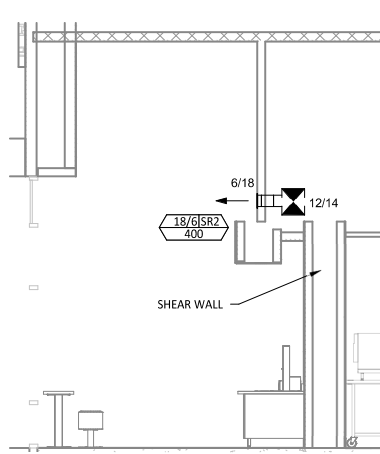
HVAC DINING ROOM RETURN SECTION

6
M100
1/4" = 1'-0"

HAVE AN INTEGRAL SMOKE DETECTOR MOUNTED IN THE RETURN AIR STREAM. INTERLOCK SMOKE DETECTOR TO RTU-2 OPERATION.

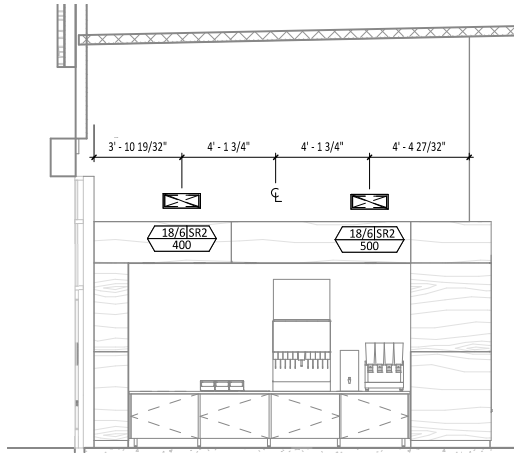
- 6 26/14 DUCT UP FROM BUILDING SUPPLY THROUGH ROOF. TRANSITION TO RTU-1 SUPPLY CONNECTION IN ROOF CURB.
- 7 26/18 DUCT UP FROM BUILDING SUPPLY TO RTU-2 SUPPLY CONNECTION. TRANSITION IN ROOF CURB.
- 8 14/14 DUCT UP THROUGH ROOF. TRANSITION TO MAU-1 SUPPLY CONNECTION IN ROOF CURB.
- 9 24/10 DUCT UP FROM HOOD THROUGH ROOF TO EF-1 COMPLIANT WITH NFPA 96. PROVIDE RADIUS ELBOWS WITH AN INSIDE RADIUS OF 0.5W AT ELBOWS IN GREASE DUCT.
- 10 8/6 DUCT UP THROUGH ROOF TO EF-2.
- 11 28/6 DUCT DOWN TO MAKEUP AIR PSP DUCT CONNECTION. TRANSITION TO SUPPLY PLENUM OPENING SIZE. TYPICAL FOR 3.
- 12 8" DIA. DUCT DOWN TO AC PSP DUCT CONNECTION. TRANSITION TO SUPPLY PLENUM OPENING SIZE. TYPICAL. CAP UNUSED DUCT CONNECTIONS.
- 13 **INSTALL SINGLE-GANG VERTICAL J-BOX FOR GRIDPOINT THERMOSTATS FURNISHED BY TEMS FOR RTU-1 AND RTU-2 AT THIS LOCATION AT 48" AFF. COORDINATE WITH ELECTRICAL SWITCHING IN THIS AREA. PROVIDE WIRING AS SHOWN IN DETAIL 8/E710.**
- 14 **INSTALL GRIDPOINT ZONE SENSOR MODULE FURNISHED BY TEMS FOR RTU-1 AT THIS LOCATION 60" AFF DIRECTLY TO WALL (NO JUNCTION BOX). COORDINATE LOCATION WITH EQUIPMENT. PROVIDE WIRING AS SHOWN IN DETAIL 8/E710.**
- 15 **INSTALL GRIDPOINT ZONE SENSOR MODULE FURNISHED BY TEMS FOR RTU-2 AT THIS LOCATION 66" AFF DIRECTLY TO WALL (NO JUNCTION BOX). COORDINATE LOCATION WITH EQUIPMENT. PROVIDE WIRING AS SHOWN IN DETAIL 8/E710.**
- 16 **INSTALL GRIDPOINT SUPPLY PROBE FURNISHED BY TEMS FOR RTU-1 IN THE SUPPLY DUCTWORK UPSTREAM FROM THE FIRST BRANCH CONNECTION. PROVIDE WIRING AS SHOWN IN DETAIL 8/E710.**
- 17 **INSTALL GRIDPOINT SUPPLY PROBE FURNISHED BY TEMS FOR RTU-2 IN THE SUPPLY DUCTWORK UPSTREAM FROM THE FIRST BRANCH CONNECTION. PROVIDE WIRING AS SHOWN IN DETAIL 8/E710.**
- 18 **INSTALL REMOTE TEMPERATURE SENSOR FOR HOOD HD-1 AT THIS LOCATION 66" AFF. COORDINATE LOCATION WITH EQUIPMENT. PROVIDE (2) #18 G. THERMISTOR CABLE FROM TEMPERATURE SENSOR TO HOOD CONTROL PANEL.**
- 19 **INSTALL KITCHEN HOOD, HD-1. SUPPORT HOOD PER MANUFACTURER'S INSTALLATION INSTRUCTIONS AND AS DETAILED IN THE ARCHITECTURAL AND STRUCTURAL DRAWINGS. INSTALL HOOD ACCORDING TO THE REQUIREMENTS OF ITS LISTING, IN COMPLIANCE WITH NFPA 96, THE BUILDING CODE, AND AUTHORITIES HAVING JURISDICTION. HOOD SHALL HAVE AN INTEGRAL DUCT COLLAR TEMPERATURE SENSOR TO AUTOMATICALLY ENERGIZE THE EXHAUST AND MAKEUP AIR FANS IF COOKING TEMPERATURES ARE DETECTED. EXHAUST DUCT SYSTEM TO BE WELDED OR FACTORY-MANUFACTURED WATER AND AIR TIGHT. INSTALL CLEANOUTS PER CODE AND AS SHOWN. INSTALL HOOD PER DETAILS 2, 4, AND 9/M700. CHIPOTLE WILL PROVIDE AN INDEPENDENT TESTING AGENCY FOR TESTING THE INTEGRITY OF THE GREASE DUCT SYSTEM.**

- CONTROL, LOW AMBIENT CONTROLS, AND WEATHERPROOF REFRIGERANT LINES PER MANUFACTURER'S RECOMMENDATION THROUGH ROOF. INSTALLATION SHALL COMPLY WITH ASHRAE REFRIGERANT LINE SET UNDER THE ROOF DECK TO WITHIN 3 REFRIGERANT PIPING TO ICE MAKER IS EXPOSED TO PUBLIC STEEL SHROUD AS SHOWN IN THE ARCHITECTURAL DRAWING.
- 22 **INSTALL ROOFTOP EQUIPMENT PER MANUFACTURER'S INSTALLATION DETAILED IN THE ARCHITECTURAL AND STRUCTURAL DRAWINGS.**
- 23 **INSTALL EXHAUST FAN EF-1 PER DETAIL 5/M700 AND AS DETAILED IN THE ARCHITECTURAL AND STRUCTURAL DRAWINGS. INSTALL GREASE VIROGUARD SYSTEM EXHAUST FAN, EF-1.**
- 24 **PROVIDE SUPPLY DIFFUSER CONNECTION TO SUPPLY SYSTEM.**
- 25 **PROVIDE AUDIO/VISUAL REMOTE SMOKE DETECTOR ANNUALLY OPERATED RESET. WIRE A UNIT BACK TO EACH SMOKE DETECTOR TYPICAL.**
- 26 **INSTALL REME HALO AIR PURIFIER FURNISHED BY TUV IN RTU-1. PROVIDE ELECTRICAL DRAWINGS FOR POWER CONNECTION INFORMATION STICKERS ON FACE OF ENCLOSURE PER DETAIL AND ON ANY WHICH THE REME HALO WOULD BE VISIBLE IF OPENED.**
- 27 **MAINTAIN 10' CLEARANCE BETWEEN WATER HEATER FLUE INTAKES. MAINTAIN 10' CLEARANCE BETWEEN WATER HEATER EXHAUST FAN EF-1 DISCHARGE. SEE PLUMBING DRAWINGS FOR HEATER FLUE AND COMBUSTION AIR TERMINATIONS.**
- 28 **ADJUST SUPPLY REGISTERS SO THAT SUPPLY AIR HITS WALL APPROXIMATELY 7' AFF WITH NO DRAFTS FELT IN THE DINING ROOM.**



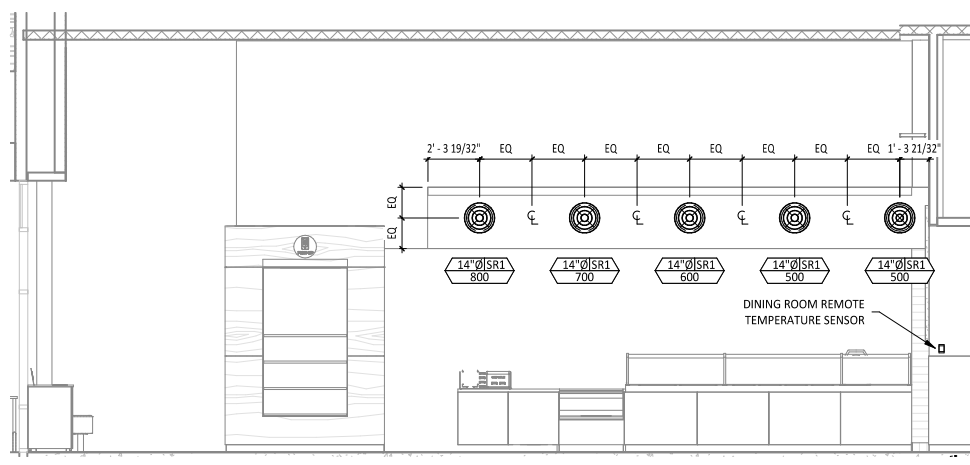
HVAC DINING ROOM SECTION

5
M100
1/4" = 1'-0"



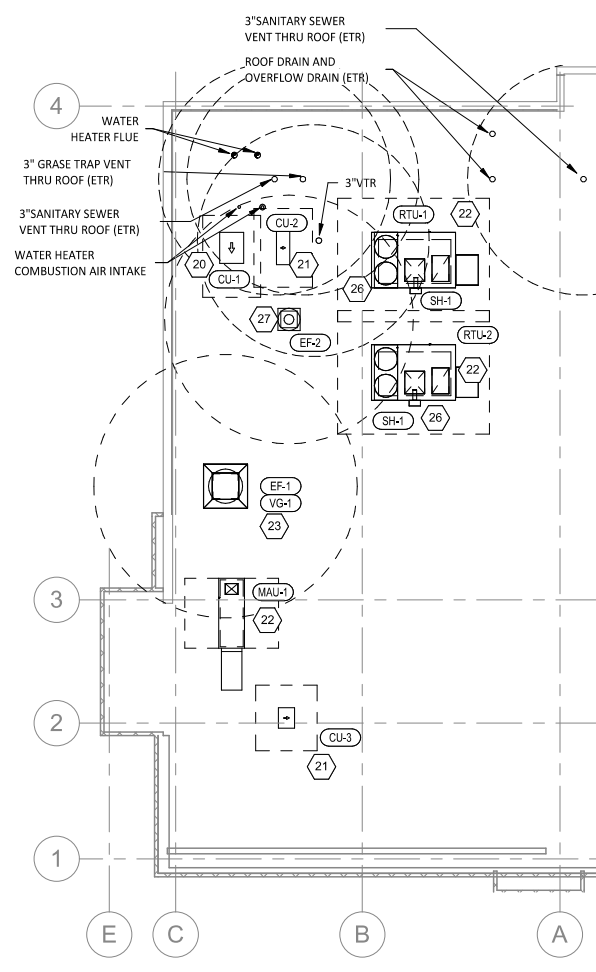
HVAC DINING ROOM SECTION

4
M100
1/4" = 1'-0"



HVAC DINING ROOM SECTION

3
M100
1/4" = 1'-0"



HVAC ROOF PLAN

2
M100
1/8" = 1'-0"