

Report By:

National TAB
1329 E. KEMPER ROAD
SUITE 4210
CINCINNATI, OH 45246



Report: PRELIM

Function: Test, Adjust, & Balance

Date: 12/18/2023

PROJECT

12-11-23 FORT LEE RESTAURANT - FORT LEE, NJ

2006-2010 HUDSON ST

FORT LEE, NJ

Client

Accurex

PO Box 410

Schofield, WI 54476

Issue List

- DOAS: Bad relay
- DOAS: Discharge air temp sensor
- DOAS: Disconnect Switch
- HOOD: HMI touchscreen
- KEF-2 Motor
- MUA Motor
- MUA: Cooling
- MUA: Motor access door
- PCU- ANSUL
- PCU- Wash system not installed



12-11-23 FORT LEE RESTAURANT - FORT LEE, NJ

Project Issue Information

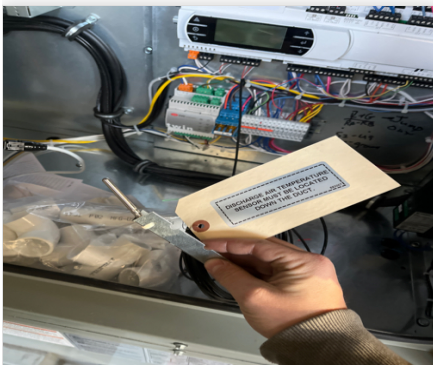
Issue Name : DOAS: Bad relay
Description : Relay R7 is bad and will need to be replaced. Diagnosed with ACCUREX tech support. Contact accurex for warranty replacement care number: G-106054-T1Y5G7
Created By : National TAB **Assigned To :** National TAB - Tyler Youells
Status : Open
Priority : **Asset Tag :**
Originated Date : 12/18/2023 - Tyler Youells - National TAB

12-11-23 FORT LEE RESTAURANT - FORT LEE, NJ

Project Issue Information

Issue Name : DOAS: Discharge air temp sensor
Description : Discharge air temperature sensor is not located in the discharge ductwork.
Created By : National TAB **Assigned To :** National TAB - Tyler Youells
Status : Open
Priority : **Asset Tag :**
Originated Date : 12/13/2023 - Tyler Youells - National TAB

Project Issue File Details



**Dischargesensor
12/13/2023**

Project Issue Response Details

- **12/13/2023 National TAB - Tyler Youells**
 - Mechanical installed temp sensor. Wiring needs to be finished installed. Currently wiring routes through control access door





12-11-23 FORT LEE RESTAURANT - FORT LEE, NJ

Project Issue Information

Issue Name : DOAS: Disconnect Switch
Description : Doas is missing the switch on the main disconnect
Created By : National TAB **Assigned To :** National TAB - Tyler Youells
Status : Open
Priority : **Asset Tag :**
Originated Date : 12/13/2023 - Tyler Youells - National TAB

Project Issue File Details



**Missingswitch
12/13/2023**



12-11-23 FORT LEE RESTAURANT - FORT LEE, NJ

Project Issue Information

Issue Name : HOOD: HMI touchscreen
Description : Make sure HMI touchscreen is on-site and can be plugged in for TAB and startup Monday.
Created By : National TAB **Assigned To :** National TAB - Tyler Youells
Status : Open
Priority : **Asset Tag :**
Originated Date : 12/13/2023 - Tyler Youells - National TAB

Project Issue File Details



Hmilocation
12/13/2023



12-11-23 FORT LEE RESTAURANT - FORT LEE, NJ

Project Issue Information

Issue Name : KEF-2 Motor

Description : KEF-2 has a bad motor. Motor spins freely when not powered. But when power is applied from the VFD the motor does not spin but sounds like there is gravel inside.

Created By : National TAB

Assigned To : National TAB - Tyler Youells

Status : Open

Priority :

Asset Tag :

Originated Date : 12/18/2023 - Tyler Youells - National TAB

Project Issue Response Details

- **12/18/2023 National TAB - Tyler Youells**
 - Electrician tested motor to direct 480V to rule out the VFD. Motor started up but died within 5-10secs



12-11-23 FORT LEE RESTAURANT - FORT LEE, NJ

Project Issue Information

Issue Name : MUA Motor
Description : MUA Motor spins freely when the unit is off. When power is applied the motor spins but sounds like there is also gravel inside it. The motor was overramping at 40hz frequency. Turned the unit back off
Created By : National TAB **Assigned To :** National TAB - Tyler Youells
Status : Open
Priority : **Asset Tag :**
Originated Date : 12/18/2023 - Tyler Youells - National TAB

Project Issue Response Details

- **12/18/2023 National TAB - Tyler Youells**
 - Unit only sounds bad on initial startup. Once spinning at the correct frequency noise disappears and sounds ok. Even at 60hz motor runs normally and under fla.



12-11-23 FORT LEE RESTAURANT - FORT LEE, NJ

Project Issue Information

Issue Name : MUA: Cooling
Description : Cooling lines not yet connected.
Created By : National TAB **Assigned To :** National TAB - Tyler Youells
Status : Open
Priority : **Asset Tag :**
Originated Date : 12/13/2023 - Tyler Youells - National TAB

Project Issue File Details



Coolinglines
12/13/2023

Project Issue Response Details

- **12/18/2023 National TAB - Tyler Youells**
 - Mechanical installed the refrigerant lines and filled the system. There are still no control wires connecting the condenser to the doas



12-11-23 FORT LEE RESTAURANT - FORT LEE, NJ

Project Issue Information

Issue Name : MUA: Motor access door
Description : Motor access door is not able to be removed. Conduit is blocking the door from lifting out. There is a belt in this compartment that will need service eventually. Recommend making door accessible
Created By : National TAB **Assigned To :** National TAB - Tyler Youells
Status : Open
Priority : **Asset Tag :**
Originated Date : 12/13/2023 - Tyler Youells - National TAB

Project Issue File Details



**Doornotaccessible
12/13/2023**



12-11-23 FORT LEE RESTAURANT - FORT LEE, NJ

Project Issue Information

Issue Name : PCU- ANSUL
Description : PCU ANSUL system is not been installed yet.
Created By : National TAB **Assigned To :** National TAB - Tyler Youells
Status : Open
Priority : **Asset Tag :**
Originated Date : 12/13/2023 - Tyler Youells - National TAB



12-11-23 FORT LEE RESTAURANT - FORT LEE, NJ

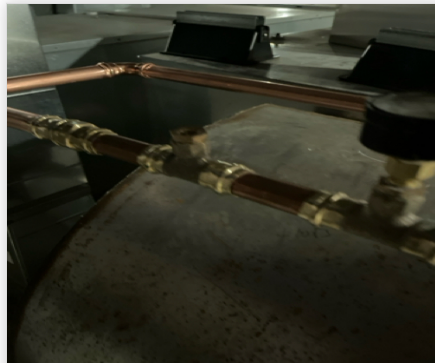
Project Issue Information

Issue Name : PCU- Wash system not installed
Description : Wash system for static filters has not yet been installed. Control box not landed, piping(not fully) detergent bottle, not yet installed.
Created By : National TAB **Assigned To :** National TAB - Tyler Youells
Status : Open
Priority : **Asset Tag :**
Originated Date : 12/13/2023 - Tyler Youells - National TAB

Project Issue File Details



Controlbox
12/13/2023



Holein piping
12/13/2023

CheckList List

- DOAS COOLING CERTIFICATION
- DOAS COOLING RUN 1
- DOAS COOLING RUN 2
- DOAS COOLING RUN 3
- DOAS ELECTRICAL INSPECTION
- DOAS FURNACE CERTIFICATION
- HOOD 1 CERTIFICATION
- HOOD 2 CERTIFICATION



12-11-23 FORT LEE RESTAURANT - FORT LEE, NJ

CheckList Information

Name : DOAS COOLING CERTIFICATION **Status :** Not Completed
Assigned Organization : National TAB **Asset :**
Requesting Organization : National TAB
Created Date : 10/17/2023 - Will Turnbough - National TAB

CheckList Item Details

Unit Information

Model Number

Comment:

Serial Number

Comment:

Condenser Fans (Test at 100%)

Condenser Fan 1 Amps / Volts

Comment:

Condenser Fan 2 Amps / Volts

Comment:

Condenser Fan 3 Amps / Volts

Comment:

Rotation is correct for all fans?

Comment:

All fans are below the FLA rating?

Comment:

Any unusual noise or vibration?

Comment:

Compressors (Test at 100%)

Compressor 1 - Amps/Volts

Comment:

Compressor 2 - Amps/Volts

Comment:

Any unusual noise or vibration?

Comment:

Comment:

Subcooling

Comment:

Suction side (PSI)

Comment:

Suction side temp (F)

Comment:

Superheat

Comment:

Compressor discharge temp (F)

Comment:

Oil level (%)

Comment:

Receiver (% full)

Comment:

Time (duration of run prior to measurements)

Comment:

OA Temp/Humidity

Comment:

Leaving Air Temp/Humidity

Comment:

Entering Air Temp/Humidity

Comment:

Comment:

Subcooling

Comment:

Suction side (PSI)

Comment:

Suction side temp (F)

Comment:

Superheat

Comment:

Compressor discharge temp (F)

Comment:

Oil level (%)

Comment:

Receiver (% full)

Comment:

Time (duration of run prior to measurements)

Comment:

OA Temp/Humidity

Comment:

Leaving Air Temp/Humidity

Comment:

Entering Air Temp/Humidity

Comment:

Comment:

Subcooling

Comment:

Suction side (PSI)

Comment:

Suction side temp (F)

Comment:

Superheat

Comment:

Compressor discharge temp (F)

Comment:

Oil level (%)

Comment:

Receiver (% full)

Comment:

Time (duration of run prior to measurements)

Comment:

OA Temp/Humidity

Comment:

Leaving Air Temp/Humidity

Comment:

Entering Air Temp/Humidity

Comment:



12-11-23 FORT LEE RESTAURANT - FORT LEE, NJ

CheckList Information

Name : DOAS ELECTRICAL INSPECTION **Status :** Not Completed
Assigned Organization : National TAB **Asset :**
Requesting Organization : National TAB
Created Date : 10/17/2023 - Will Turnbough - National TAB

CheckList Item Details

Supply Power Inspection

Inspect all electrical connections and ensure no loose connections, charring, etc. Pass

Comment:

Does line voltage match the rated voltage of the unit? Yes

Comment:

486/487/489

Additional Notes:

Comment:

Control Panel Documentation

Is the remote user terminal display and cable present? Yes

Comment:

Are all control wiring connections secure? Yes

Comment:

Are all field wired sensors landed (pressure, fire, temperature, etc)? Yes

Comment:

Discharge Temperature sensor is landed but not finished installed in discharge ductwork

Is the wiring schematic on the cabinet door?

Yes

Comment:

Is wiring schematic accurate to unit nameplate?

Yes

Comment:

Additional notes:

Comment:



12-11-23 FORT LEE RESTAURANT - FORT LEE, NJ

CheckList Information

Name : DOAS FURNACE CERTIFICATION **Status :** Not Completed
Assigned Organization : National TAB **Asset :**
Requesting Organization : National TAB
Created Date : 10/17/2023 - Will Turnbough - National TAB

CheckList Item Details

120/24 VAC transformer has 24V out? Yes

Comment:

Fuel type:

Comment:

Natural Gas

Furnace manufacturer:

Comment:

INTERTEK

Furnace model number:

Comment:

XPVG200

Furnace serial number:

Comment:

159231562

Gas pressure at inlet (burners off)

Comment:

9.94" wc

Gas pressure at Train Inlet (high fire)

Comment:

5.03" wc

Gas pressure at Burner Manifold (high fire)

Comment:

3.49" wc

Air temperature rise (high fire)

Comment:

54 DegF 107-53

Gas pressure at Train Inlet (low fire)

Comment:

4.99" wc

Gas pressure at Burner Manifold (low fire)

Comment:

0.336" wc

Air temperature rise (low fire)

Comment:

21 DegF 74-53

Additional notes:

Comment:



12-11-23 FORT LEE RESTAURANT - FORT LEE, NJ

CheckList Information

Name : HOOD 1 CERTIFICATION **Status :** Not Completed
Assigned Organization : National TAB **Asset :**
Requesting Organization : National TAB
Created Date : 10/17/2023 - Will Turnbough - National TAB

CheckList Item Details

HD-1

Hood Photos

Comment:

Exhaust Fan Photo

Comment:

Is the hood powered and free of alarms?

Comment:

Does hood label match submittal?

Comment:

Do hood dimensions match submittal?

Comment:

Is the hood hung Level?

Comment:

Are hood lights installed and are they powered?

Comment:

Are temperature Sensors installed?

Comment:

Are the correct number and size of filters installed, and are they installed correctly?

Comment:

Is the grease cup installed?

Comment:

Are side splashes/skirts installed and do they match the submittal?

Comment:

Is the backsplash installed and does it match the submittal?

Comment:

Are ceiling enclosures installed and do they match the submittal?

Comment:

Does the appliance line-up match the drawings on submittal?

Comment:

Document any other issues or discrepancies.

Comment:

HOOD CAPTURE TEST

List equipment turned on for testing:

Comment:

Smoke Test Capture - Perimeter of Hood

Comment:

Smoke Test Capture - Top of Cooking Surface

Comment:

List smoke candle used:

Comment:



12-11-23 FORT LEE RESTAURANT - FORT LEE, NJ

CheckList Information

Name : HOOD 2 CERTIFICATION **Status :** Not Completed
Assigned Organization : National TAB **Asset :**
Requesting Organization : National TAB
Created Date : 10/17/2023 - Will Turnbough - National TAB

CheckList Item Details

HD-2

Hood Photos

Comment:

Exhaust Fan Photo

Comment:

Is the hood powered and free of alarms?

Comment:

Does hood label match submittal?

Comment:

Do hood dimensions match submittal?

Comment:

Is the hood hung Level?

Comment:

Are hood lights installed and are they powered?

Comment:

Are temperature Sensors installed?

Comment:

Are the correct number and size of filters installed, and are they installed correctly?

Comment:

Is the grease cup installed?

Comment:

Are side splashes/skirts installed and do they match the submittal?

Comment:

Is the backsplash installed and does it match the submittal?

Comment:

Are ceiling enclosures installed and do they match the submittal?

Comment:

Does the appliance line-up match the drawings on submittal?

Comment:

Document any other issues or discrepancies.

Comment:

HOOD CAPTURE TEST

List equipment turned on for testing:

Comment:

Smoke Test Capture - Perimeter of Hood

Comment:

Smoke Test Capture - Top of Cooking Surface

Comment:

List smoke candle used:

Comment: