

GENERAL NOTES

- IN GENERAL, PLANS AND DIAGRAMS ARE SCHEMATIC ONLY AND SHOULD NOT BE SCALED.
- ALL WORK COVERED IN THIS SECTION SHALL BE CONSTRUCTED IN ACCORDANCE WITH THE LATEST PUBLISHED STANDARDS OF ASHRAE, AND NFPA.
- ALL MECHANICAL WORK SHALL MEET ALL THE REQUIREMENTS OF THE "FLORIDA BUILDING CODE 2014.
- HVAC SYSTEM DESIGNED TO MEET OUTSIDE TEMPERATURE OF 94 DEGREES F SUMMER AND 28 DEGREES F WINTER. CONTACT HVAC EQUIPMENT SUPPLIER FOR REQUIREMENTS AT OTHER TEMPERATURE CONDITIONS.
- PROVIDE 1 YEAR WARRANTY ON WORKMANSHIP AND ON EQUIPMENT BY MECHANICAL CONTRACTOR. 1 YEAR PARTS, 5 YEAR COMPRESSOR AND 10 YEAR HEAT EXCHANGER WARRANTIES ON THE ROOFTOP UNITS BY MANUFACTURER.
- INSULATED FLEXIBLE DUCT MAY BE USED IN MAXIMUM LENGTHS OF 7'-0" PER BRANCH RUN. THE BALANCE OF THE RUN SHALL BE HARD PIPE W/ CODE MINIMUM INSULATED SLEEVE. FLEXIBLE DUCT SHALL BE OWENS CORNING INL. 25 OR EQUAL.
- SPIN-IN FITTING W/ DAMPER SHALL BE FLEXAIRE RF OR METALAIR MBSD. TYPICAL OF ALL BRANCH DUCT RUNS.
- ALL DUCTWORK TO BE RUN ABOVE THE SUSPENDED CEILING WHERE APPROPRIATE. ALL EXPOSED DUCT TO BE G90 GALVANIZED STEEL.
- HVAC CONTRACTOR TO RECEIVE AND SET ROOF MOUNTED CONDENSING UNITS AND PROVIDE MOUNTING RAILS. REFER TO STRUCTURAL PLAN FOR LOCATIONS OF ROOF MOUNTED EQUIPMENT, CURB, AND RAIL DETAILS.
- DUCTWORK SHOWN IS FINISHED O.D. DIMENSION AND TO BE INSULATED WITH 1 1/2" DUCT WRAP (R-8 MIN), INCLUDING DIFFUSERS.
- RETURN DROPS FROM RTU-1 AND RTU-2 TO BE LINED, PINNED AND GLUED W/ 1" INSULATION PER INDUSTRY STANDARDS.
- COMPLETED INSTALLATIONS SHALL CONFORM TO ALL APPLICABLE LOCAL, STATE, AND FEDERAL CODES AND ORDINANCES, INCLUDING, BUT NOT LIMITED TO THE LATEST EDITIONS OF THE FOLLOWING: STATE BUILDING CODE, NFPA-90A, NFPA-96 AND NFPA-101.
- SUPPLY AND RETURN AIR DUCT DROPS FROM ROOF TOP UNITS TO BE ISOLATED FROM UNIT VIBRATION WITH FLEXIBLE DUCT CONNECTORS.
- ALL UNEXPOSED SUPPLY & RETURN AIR DUCTS AND DIFFUSERS ARE TO BE INSULATED.
- RUN 18/8 THERMOSTAT WIRE FROM FAN CONTROL PANEL TO ROOFTOP UNITS FOR THERMOSTATS AND 18/2 FOR OUTSIDE AIR DAMPER CONTROLLERS.
- HVAC CONTRACTOR TO TEST CHECK AND BALANCE ALL ROOFTOP UNITS, EXHAUST HOODS, EXHAUST FANS AND DIFFUSERS TO SPECIFIED CFM'S, AND SUBMIT A WRITTEN REPORT BY A CERTIFIED TEST AND BALANCE CONTRACTOR TO THE OWNER.
- THERMOSTATS ARE PROVIDED IN FAN CONTROL PANEL. HVAC CONTRACTOR TO MOUNT REMOTE SENSORS AND RUN CONTROL WIRES FOR STATS AND SENSORS OUTSIDE OF THE FAN CONTROL PANEL.
- ALL CURBS TO BE ONE PIECE WELDED AND INSULATED 18ga. STEEL, WITH RIGID INSULATION GLUED TO INSIDE OF CURB. ALL CURBS TO HAVE WOOD NAILER ATTACHED TO TOP OF CURB.
- ALL 90 DEGREE BENDS IN SUPPLY AIR DUCTS TO HAVE TURNING VANES. THE DISMANTLING OF ANY DUCT WILL BE REQUIRED TO VERIFY VANES.
- ALL DUCT WORK IS TO BE INSTALLED PER SMACNA SPECIFICATIONS.
- PIEZO ALARM AND REMOTE TEST STATION FOR SMOKE DETECTORS INSTALLED BY HVAC CONTRACTOR. MOUNTING LOCATION SHOWN ON ELECTRICAL PLAN.
- HVAC CONTRACTOR TO SUPPLY AND INSTALL WIRE FOR THERMOSTAT AND SMOKE DETECTOR CIRCUITS.
- CONNECT ALL DUCTS TO FANS AND OTHER AIR DISTRIBUTION EQUIPMENT USING MECHANICAL FASTENERS WITH SEALS, MASTIC OR GASKETS.
- CONTRACTOR TO REFER TO "H" AND "W" SHEETS IN SET FOR SPECIFIC HOOD AND FAN INFORMATION AND WIRING DIAGRAMS.

HVAC EQUIPMENT & MATERIAL PACKAGE

FOR QUOTATION ON THE FOLLOWING EQUIPMENT CONTACT WENDY'S ACCOUNT COORDINATOR,

TRANE NATIONAL ACCOUNTS PHONE: 1-866-986-4822

EQUIPMENT PACKAGE: RTU-1 AND RTU-2 AS PER SCHEDULE THIS SHEET. IF DESIGN CONDITIONS DIFFER FROM THOSE LISTED, CONTACT SUPPLIER (LISTED ABOVE) FOR APPROPRIATE EQUIPMENT.

AIR DEVICE PACKAGE: TO INCLUDE 1 THRU 6 AND ALL SQUARE TO ROUND TRANSITIONS. ALL DIFFUSERS TO BE ALUMINUM FACE.

EQUIPMENT AND MATERIAL PACKAGES ARE IN STOCK AND SHOULD BE ORDERED IMMEDIATELY UPON RECEIPT OF HVAC CONTRACT TO AVOID CONSTRUCTION DELAY.

EXHAUST HOOD PACKAGE

HOOD & FAN PACKAGE SUPPLIED BY WENDY'S ON ALL COMPANY OWNED STORES.

VERIFY WITH OWNER'S REPRESENTATIVE WHO IS TO SUPPLY HOOD & FAN PACKAGE ON FRANCHISE STORES.

INCLUDES KITCHEN HOODS AND EXHAUST FANS EF-1 THRU EF-3.

CURBS FOR EXHAUST FANS ARE SUPPLIED HALTON.

COORDINATE THE DELIVERY OF THIS PACKAGE WITH THE WENDY'S JOB SUPERVISOR. INSTALLATION BY HVAC CONTRACTOR.

ATTENTION ALL BIDDERS

REFER TO WENDY'S APPROVED SUPPLIER LIST ON SHEET S-4 TO OBTAIN NATIONAL ACCOUNT PHONE NUMBERS AND CONTACTS

COOLING/ HEATING LOAD CALCULATIONS

FOR:
WENDY'S STORE
LUTZ, FLORIDA
ST/SITE# 11812
CONDITIONED AREA: **2850 S.F.**

DESIGN PARAMETERS:
OUTDOOR TEMPERATURE (Db/Wb): 92Db/79Wb (SUMMER)
OUTDOOR TEMPERATURE (Db): 43b (WINTER)
INDOOR TEMPERATURE: (Db) 75Db (SUMMER)
INDOOR TEMPERATURE: (Db) 70Db (WINTER)
INDOOR RELATIVE HUMIDITY 60%
GRAINS WATER DIFFERENTIAL: 64 G.R.
SIZING METHOD: ASHRAE HANDBOOK OF FUNDAMENTALS, CHAPTER 26

COOLING LOAD DESIGN CALCULATIONS

HEAT GAIN CALCULATIONS:

ROOF 2850 sf. x 17 x 0.03 = 1,454 Btuh
N/W/S GLASS 326 sf. x 17 x 1.1 = 6,096 Btuh
E GLASS 363 sf. x 77 x 1.1 = 30,661 Btuh
N/W/S WALL 1576 sf. x 17 x 0.04 = 1,072 Btuh
E WALL 135 sf. x 19 x 0.04 = 103 Btuh
LIGHTS 2850 sf. x 1.7 W x 3.4 = 16,473 Btuh
PEOPLE 50 people x 250 = 12,500 Btuh
EQUIP. LOADS = 71,300 Btuh

SENSIBLE HEAT = 139,659 Btuh

PEOPLE (Latent) 50 people x 200 = 10,000 Btuh

TOTAL HEAT = 149,659 Btuh

TOTAL SENSIBLE LOAD

139,659 + (3000 OA x 1.08 x 17) = **194,739 Btuh**

TOTAL LOAD

149,659 + (3000 OA x 4.5 x 15.5) = **358,909 Btuh**

358,909 Btuh / 12,000 = 29.9 Tons

HEATING LOAD DESIGN CALCULATIONS:

ROOF 2850 sf. x 33 x 0.03 = 2,822 Btuh
GLASS 689 sf. x 33 x 1.1 = 25,011 Btuh
WALL 1711 sf. x 33 x 0.04 = 2,259 Btuh
OUTSIDE AIR 3000 x 33 x 1.08 = 106,920 Btuh

TOTAL HEATING LOAD = 137,012 Btuh
40.14 kw

ROOFTOP A/C UNIT SCHEDULE

MARK		RTU-1	RTU-2
AREA SERVED	-	KITCHEN	SEATING
SUPPLY AIR	CFM	5010	4370
OUTSIDE AIR	CFM	1600	1400
EXT. STATIC PRESSURE	IN. H ₂ O	1.0	1.0
MOTOR	H.P.	3.0	3.0
ELECTRICAL	V/ø/HZ	208/3/60	208/3/60
FILTER TYPE	-	2"-MERV 8	2"-MERV 8
TOTAL COOLING CAPACITY	BTUH	174,500	148,100
SENSIBLE COOLING CAPACITY	BTUH	132,910	107,220
ENT. AIR TEMP. (DB/WB)	F/F	81.1/66.5	81.2/66.8
LEAVING AIR TEMP. (DB/WB)	F/F	57.3/56.2	56.9/55.4
HEATER	KW/STAGES	36/2	36/2
AMBIENT TEMP.	F	94	94
EER	-	12.5	12.4
IEER	-	19.7	19.6
WEIGHT	LBS.	2190	2046
MANUFACTURER	-	TRANE	TRANE
MODEL NO.	-	TZD180F3	TZD150F3
NOTES	#	①②③④⑤	①②③④⑤

- OUTSIDE AIR FLOW IS NOMINAL. TEST EXISTING EXHAUST SYSTEMS PRIOR TO SHUT DOWN AND BALANCE OUTSIDE AIR TO UNITS TO +10% OF EXHAUST TOTAL.
- PROVIDE WITH FACTORY INSTALLED ELECTRICAL HEAT AND SINGLE POINT POWER CONNECTION. PROVIDE WITH THROUGH-THE-BASE ELECTRICAL CONNECTION AND CIRCUIT BREAKER DISCONNECT.
- PROVIDE WITH DEHUMIDIFICATION PACKAGE INCLUDING FACTORY CONTROLS. PROVIDE WITH OUTSIDE AIR INTAKE WITH MOTORIZED DAMPER.
- PROVIDE WITH HIGH STATIC DRIVE ACCESSORY.
- FANS TO OPERATE CONTINUOUSLY DURING OCCUPIED PERIODS AND DURING PERIODS KITCHEN HOODS ARE IN OPERATION.

* APPROVED EQUAL SHALL BE LENNOX AND AON.

AIR BALANCE SCHEDULE

MARK	SUPPLY AIR CFM	RETURN AIR CFM	OUTSIDE AIR CFM	EXHAUST CFM
RTU-1	5010	3410	1600	---
RTU-2	4370	2970	1400	---
EF-1	---	---	---	1175
EF-2	---	---	---	1150
EF-3	---	---	---	300
TOTAL=	9,380 CFM	6,380 CFM	3,000 CFM	2625 CFM

TOTAL BUILDING PRESSURIZATION 375 CFM(+)

NOTES:

- BALANCING TOLERANCES ARE AS FOLLOWS:
HOODS: 0% TO +10%
OUTDOOR AIR: 0% TO +10%
SUPPLY AND RETURN AIR DIFFUSERS: -10% TO +10%
TOILET EXHAUST AIR: -10% TO +10%
BALANCE ROOFTOP UNIT SUPPLY AND RETURN AIR PRIOR TO TURNING ON EXHAUST FANS.
- EXHAUST HOODS SHALL BE BALANCED WITH A 4" VANE ANEMOMETER.
- VERIFY EXHAUST AIR FLOW RATES PRIOR TO SHUT DOWN OF UNITS.

2014 FLORIDA BUILDING CODE -- 507.16.1 CAPTURE AND CONTAINMENT TEST.

THE PERMIT HOLDER SHALL VERIFY CAPTURE AND CONTAINMENT PERFORMANCE OF THE EXHAUST SYSTEM. THIS FIELD TEST SHALL BE CONDUCTED WITH ALL APPLIANCES UNDER THE HOOD AT OPERATING TEMPERATURES, WITH ALL SOURCES OF OUTDOOR AIR PROVIDING MAKEUP AIR FOR THE HOOD OPERATING AND WITH ALL SOURCES OF RECIRCULATED AIR PROVIDING CONDITIONING FOR THE SPACE IN WHICH THE HOOD IS LOCATED OPERATING. CAPTURE AND CONTAINMENT SHALL BE VERIFIED VISUALLY BY OBSERVING SMOKE OR STEAM PRODUCED BY ACTUAL OR SIMULATED COOKING, SUCH AS WITH SMOKE CANDLES, SMOKE PUFFERS, ETC.

MECHANICAL LEGEND

SYMBOL	DESCRIPTION
	NEW DUCTWORK, PIPING, OR EQUIPMENT
	FLEXIBLE DUCT
	SUPPLY OR OUTSIDE AIR DUCT SECTION
	RETURN DUCT SECTION
	EXHAUST DUCT SECTION
	DUCTWORK TRANSITION
	MANUAL AIR VOLUME CONTROL DAMPER
	SUPPLY AIR DEVICE. CLEAR TRIANGLE SIDES INDICATE AIR FLOW PATTERN
	RETURN AIR DEVICE
	EXHAUST AIR DEVICE
	WALL MOUNTED THERMOSTAT
	WALL MOUNTED TEMPERATURE SENSOR
	SMOKE DETECTOR
	TEST AND RESET STATION
	UNDERCUT DOOR 3/4"

FAN SCHEDULE

MARK		EF-1	EF-2	EF-3
SERVICE	-	EXHAUST	EXHAUST	EXHAUST
AREA SERVED	-	KITCHEN HOOD	KITCHEN HOOD	RESTROOMS
AIR QUANTITY	CFM	1175	1150	300
EXT. STATIC PRESS.	IN. H ₂ O	1.1	1.1	.375
FAN TYPE	-	UPBLAST	UPBLAST	PRV
DRIVE	-	DIRECT	DIRECT	DIRECT
SONES	-	14.2	14.5	11.9
MOTOR	H.P./WATTS	1 H.P.	1 H.P.	95 W
MOTOR SPEED	RPM	1370	1360	1500
ELECTRICAL	V/ø/HZ	208/1/60	208/1/60	115/1/60
CONTROL	-	③	③	INTERLOCK WITH LIGHTS
MANUFACTURER	-	SOLER & PALAU	SOLER & PALAU	SOLER & PALAU
MODEL	-	TXD1510WRHUL	TXD1510WRHUL	LPD008
NOTES	#	①②	①②	①②

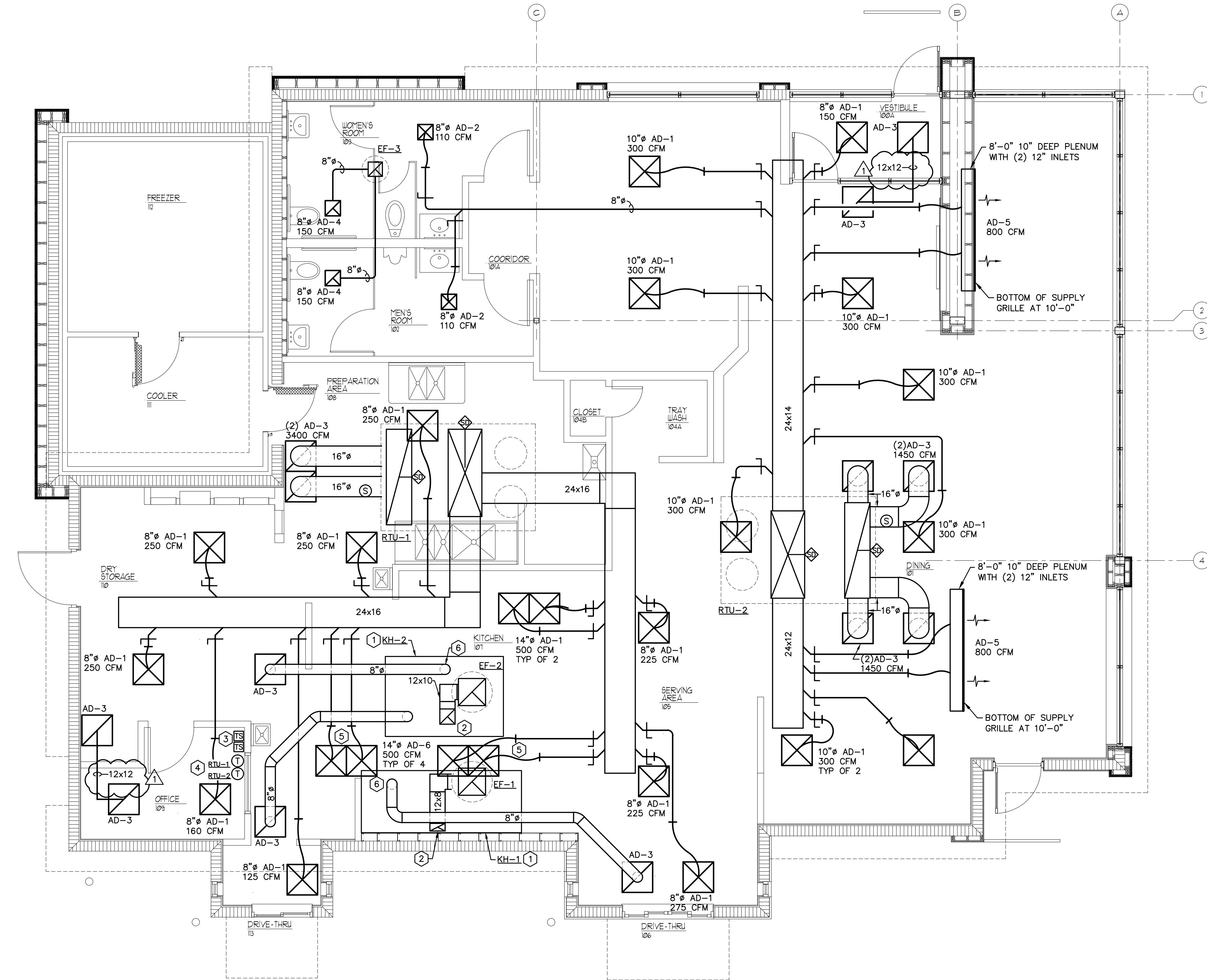
- FANS WILL BE SUPPLIED AS PART OF THE EXHAUST HOOD PACKAGE
- U.L. 762 LISTED WITH NEMA 1 DISCONNECT, VENTED CURB EXTENSION, GREASE TRAP WITH DRAIN CONNECTION, HINGED CURB CAP AND TIE DOWN POINTS.
- SEE ELECTRICAL DRAWINGS.

AIR DEVICE SCHEDULE

MARK	TYPE	MATERIAL	FINISH	MANUFACTURER AND MODEL	REMARKS
AD-1	CEILING SUPPLY	ALUMINUM	WHITE BAKED ENAMEL	TITUS PAR-AA	①
AD-2	CEILING SUPPLY	ALUMINUM	WHITE BAKED ENAMEL	TITUS PAR-AA	③
AD-3	CEILING RETURN	ALUMINUM	WHITE BAKED ENAMEL	TITUS PAR-AA	②
AD-4	CEILING EXHAUST	ALUMINUM	WHITE BAKED ENAMEL	TITUS 350FL	④
AD-5	SLOT DIFFUSER	STEEL	WHITE BAKED ENAMEL	TITUS ML-34	⑤
AD-6	CEILING SUPPLY	ALUMINUM	WHITE BAKED ENAMEL	TITUS PAR-AA	⑥

- PROVIDE 24x24 MODULE WITH ROUND NECK TRANSITION. SEE PLAN FOR NECK SIZES.
- DIFFUSER TO HAVE 22x22 BOX FIELD FABRICATED WITH 14"ø COLLAR INSTALLED IN SIDE OF BOX. TO BE FIELD MEASURED FOR 14" HEIGHT. SEE PLAN FOR NECK SIZES.
- PROVIDE WITH 12x12 LAY-IN MODULE, WITH ROUND NECK TRANSITION AND BACKDRAFT DAMPER.
- SEE PLAN FOR NECK SIZE.
- PROVIDE 8" MODULE WITH (4) 1" SLOTS.
- PROVIDE 24x24 MODULE WITH 22x22 NECK, DUMP BOX WITH PERFORATED FACE (SEE DETAIL SHEET M4.1). PROVIDE WITH OPPOSED BLADE DAMPER, SQUARE TO ROUND NECK TRANSITION. SEE PLAN FOR NECK SIZES.

* APPROVED EQUALS SHALL BE EGGERS.



FLOOR PLAN - MECHANICAL
 SCALE: 1/4"=1'-0" /3919-M2.1

- MECHANICAL NOTES:**
- INSTALL GREASE EXHAUST HOOD, SUPPORT HOOD PER MANUFACTURER'S INSTALLATION INSTRUCTIONS. TRANSITION FROM HOOD CONNECTIONS TO DUCT SIZES SHOWN.
 - TRANSITION FROM HOOD COLLAR TO DUCT SIZE SHOWN AND EXTEND 16 GAUGE CARBON STEEL GREASE EXHAUST DUCTWORK WELDED LIQUID TIGHT UP TO EXHAUST FAN. WRAP GREASE DUCT WITH COMPOSITE GREASE DUCT ENCLOSURE ASSEMBLY PER HVAC SPECIFICATIONS. INSTALL EXHAUST DUCT WRAP PER MANUFACTURER'S INSTRUCTIONS. PROVIDE THE "FASTDOOR XL" GREASE DUCT CLEAN-OUT ACCESS DOORS (C.O.D.) MANUFACTURED BY THERMAL CERAMICS (OR EQUIVALENT) AT EVERY CHANGE OF DIRECTION IN THE DUCT AND/OR EVERY 10 FEET WITH MINIMUM OF 3 FEET OF CLEARANCE IN FRONT OF CLEAN-OUT. INSULATE ACCESS DOORS TO MAINTAIN RATING OF GREASE DUCT ENCLOSURE PER GREASE DUCT FIRE PROTECTION INSULATION MANUFACTURER'S INSTRUCTIONS.
 - PROVIDE COMBINATION PIEZO ALARM AND REMOTE TEST STATION COMPATIBLE WITH UNIT MOUNTED SMOKE DETECTOR. MOUNT 36" ABOVE FINISHED FLOOR AND LABEL FOR WHICH UNIT IT MONITORS.
 - INSTALL ROOM TEMPERATURE SENSOR AND THERMOSTAT AS SHOWN. MOUNT THERMOSTAT AND SENSOR AT 48" ABOVE FINISHED.
 - DUCT SUPPLYING DIFFUSERS AT HOOD LOCATIONS IS SIZED TO SLOW AIR DOWN TO 460 FT/MN.. REFER TO KITCHEN MAKE-UP AIR DIFFUSER DETAIL.
 - TRANSITION FROM CAPTURE JET FAN INLET ON TOP OF HOOD TO DUCT SIZE SHOWN AND EXTEND DUCTWORK TO GRILLE AS SHOWN ON PLAN. DUCTWORK AND GRILLE STATIC PRESSURE LOSS SHALL NOT EXCEED 0.25".

Hartley + Purdy Architecture, Inc.
 1711 North Times Avenue, Tampa, Florida 33607, Ph: 813.353.4003 Fax: 813.353.4350 Web Site: www.hartleypurdy.com

PROJECT TYPE: **SQE NEW**

Wendy's

REV.	DATE	DESCRIPTION
▲	12.27.16	PERMIT COMMENTS
▲		
▲		
▲		

ISSUE DATE: 09/09/16
 PROJECT NUMBER: 3919
 DRAWN BY: RC
 CHECKED BY: MJC

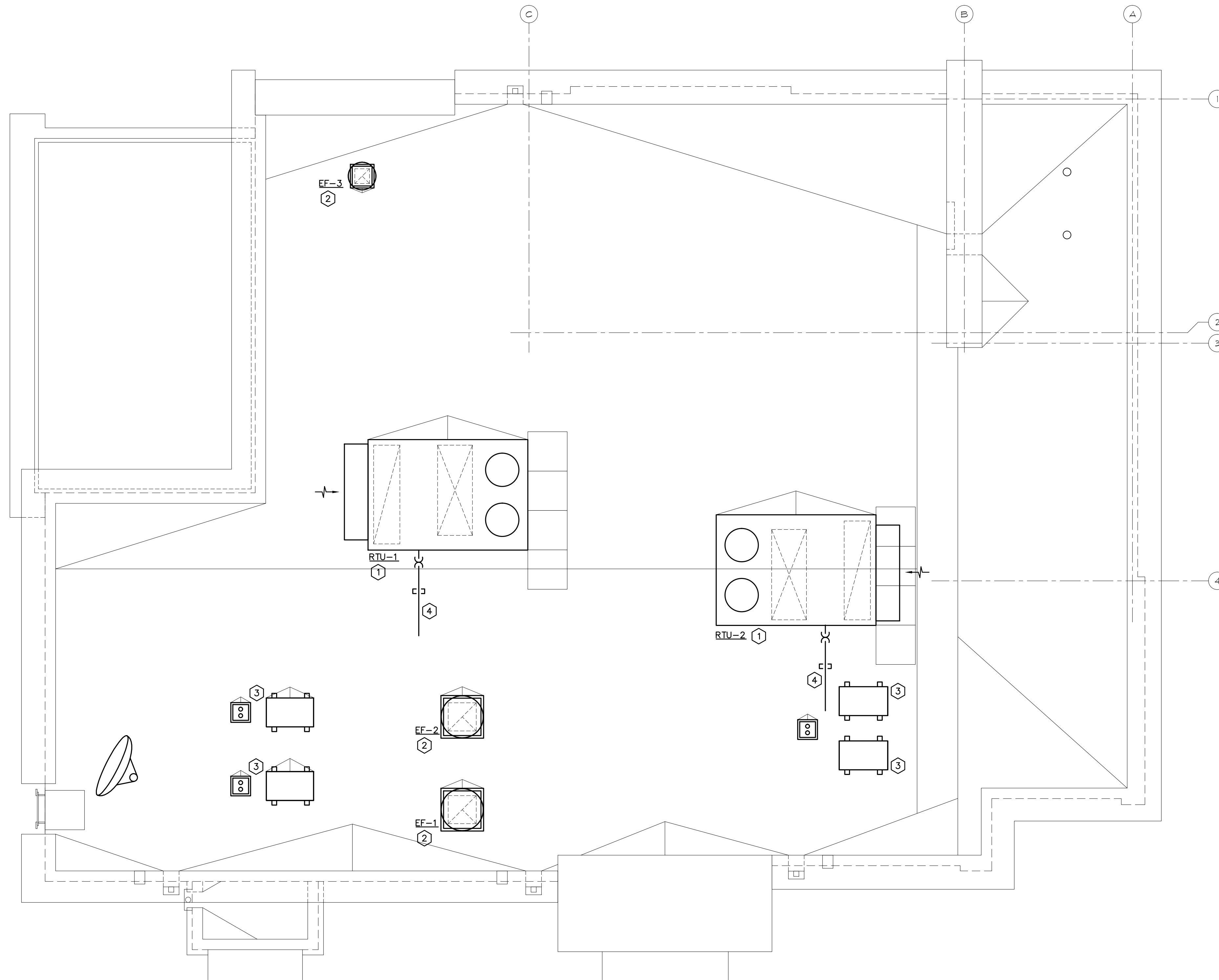
MECHANICAL FLOOR PLAN

SHEET NUMBER

M2.1
 AA-0003276
 ALL RIGHTS RESERVED

PYRAMID ENGINEERING
 CONSULTING ENGINEERS
 5596 Rio Vista Drive
 Clearwater, Florida 33760
 (727) 531-2989 • Reg. No. EB6890
 pyramid@pyramidengineering.org

SITE NUMBER: 11812
 BASE MODEL: SQE
 ASSET TYPE: FRANCHISEE
 CLASSIFICATION: NEW
 OWNER: JAE RESTAURANT GROUP
 BASE VERSION: 2016 JAN R6
 UPGRADE CLASSIFICATION:
 FRAN NEW BUILD
 PROJECT YEAR: JAN 2016
 FURNITURE PACKAGE: JAN 2016
 DESIGN BULLETINS: THRU 08 2015-02



ROOF PLAN - MECHANICAL

SCALE: 1/4"=1'-0" /3919-M3.1

MECHANICAL NOTES:

- 1 PROVIDE ROOFTOP UNIT AND CURB. COORDINATE UNIT WITH STRUCTURE. SHIM UNIT AND CURB LEVEL FOR PROPER CONDENSATE DRAINAGE. PROVIDE FLEXIBLE CONNECTORS ON SUPPLY AND RETURN AIR DUCT CONNECTIONS. TRANSITION TO DUCT SIZES SHOWN.
- 2 PROVIDE CURB AND INSTALL ROOF MOUNTED EXHAUST FAN.
- 3 INSTALL ROOF MOUNTED CONDENSING UNIT FOR FOOD SERVICE EQUIPMENT AND ASSOCIATED REFRIGERANT LINE SET, THERMOSTATIC EXPANSION VALVE, SOLENOID VALVE, TEMPERATURE CONTROL, SIGHT GLASS, FILTER DRIER, PRESSURE CONTROL, CRANKCASE HEATER, LOW AMBIENT CONTROLS, AND WEATHERPROOF HOUSING. PROVIDE ROOF RAILS TO SUPPORT CONDENSING UNIT ON ROOF. TRAP AND SLOPE CONDENSATE LINES PER MANUFACTURER'S RECOMMENDATIONS. PROVIDE HEAT TRACING ON CONDENSATE LINES INSIDE FREEZER. PROVIDE PIPE CURB ASSEMBLY FOR ROOF PENETRATIONS. REFER TO ROOF PLAN SHEET A1.3 FOR ADDITIONAL INFORMATION. REFER TO DETAILS ON ARCHITECTURAL SHEETS FOR PIPE FOR PIPE CURB ASSEMBLY AND RAIL INSTALLATION.
- 4 ROUTE CONDENSATE DRAIN LINES TO ROOF DRAINS. PROVIDE CLEAN-OUTS AT ALL CHANGES OF DIRECTION. SUPPORT DRAIN LINES AT 4'-0" O.C.

Hartley + Purdy Architecture, Inc.
 1711 North Himes Avenue, Tampa, Florida, 33607, Ph: 813.353.0035 Fax: 813.353.4350 Web: www.hartleypurdy.com

PROJECT TYPE: **SQE NEW**

Wendy's

REV.	DATE	DESCRIPTION

ISSUE DATE: 09/08/16
 PROJECT NUMBER: 3919
 DRAWN BY: RC
 CHECKED BY: MJC

SEAL

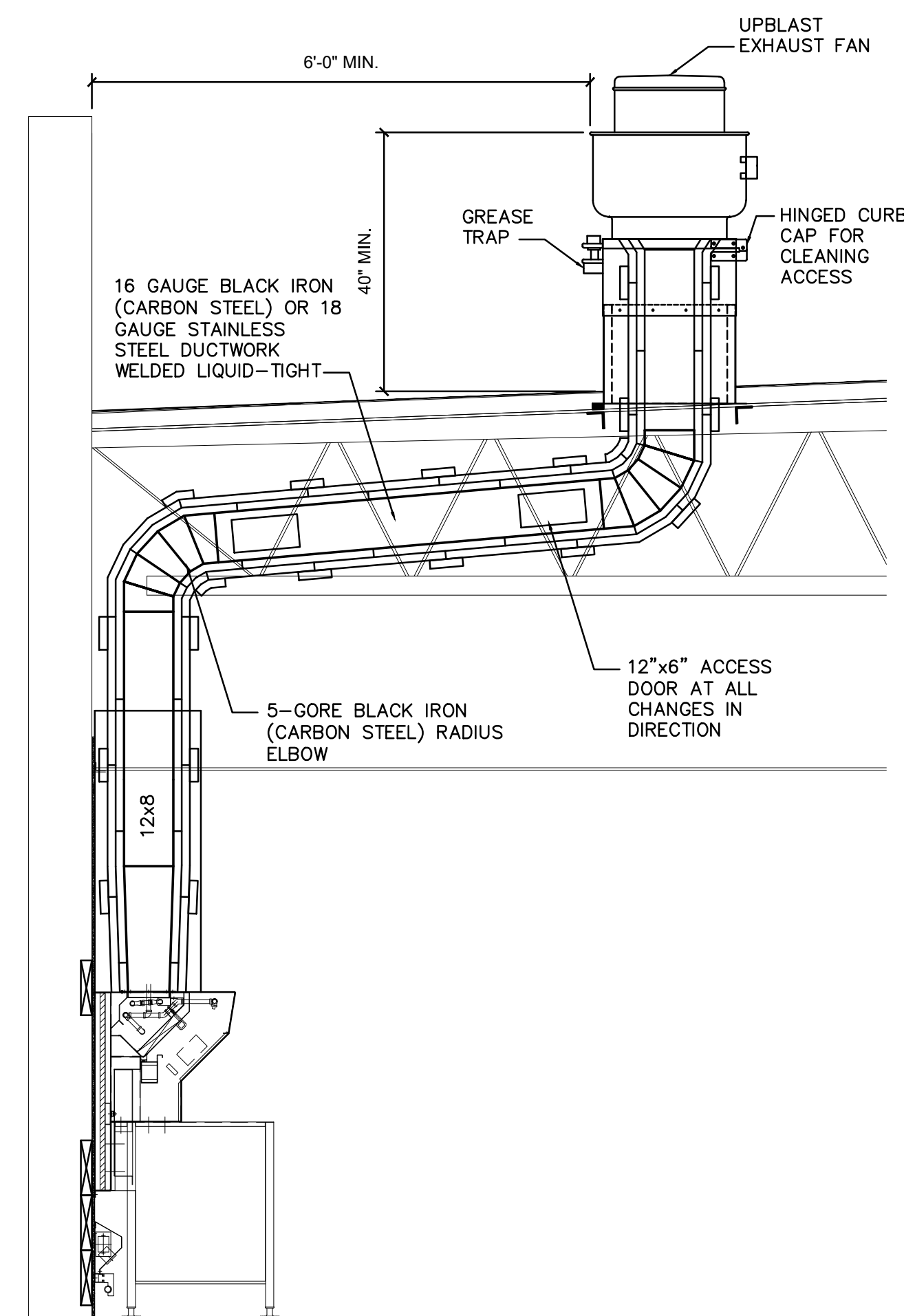
SHEET NAME
MECHANICAL ROOF PLAN

SHEET NUMBER

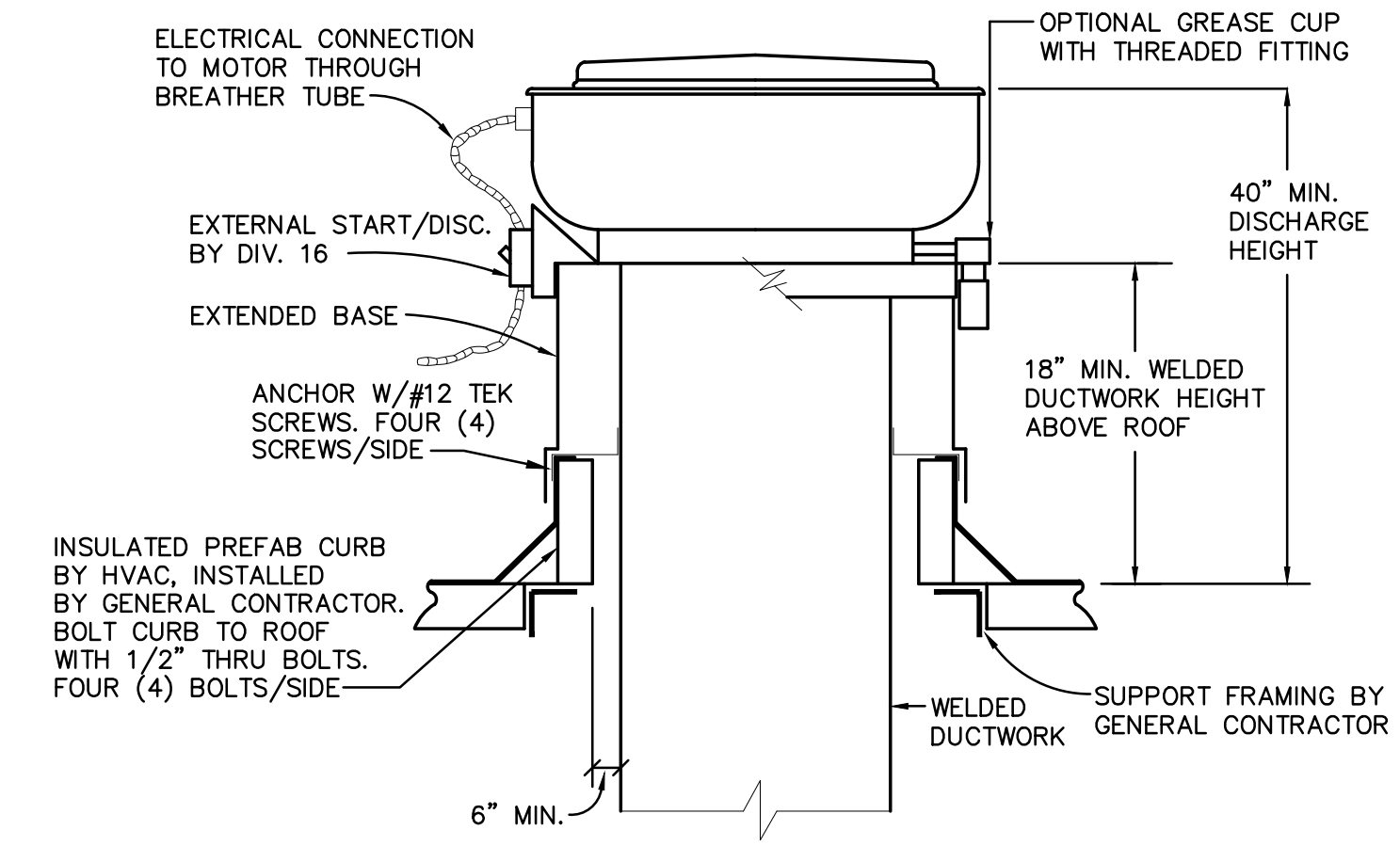
M3.1

AA-0003276
 COPYRIGHT © 2016 HARTLEY + PURDY ARCHITECTURE, INC.
 ALL RIGHTS RESERVED

PYRAMID ENGINEERING
 CONSULTING ENGINEERS
 5506 Rio Vista Drive
 Clearwater, Florida 33760
 (727) 531-2989 • Reg. No. EB6890
 pyramid@pyramidengineering.org

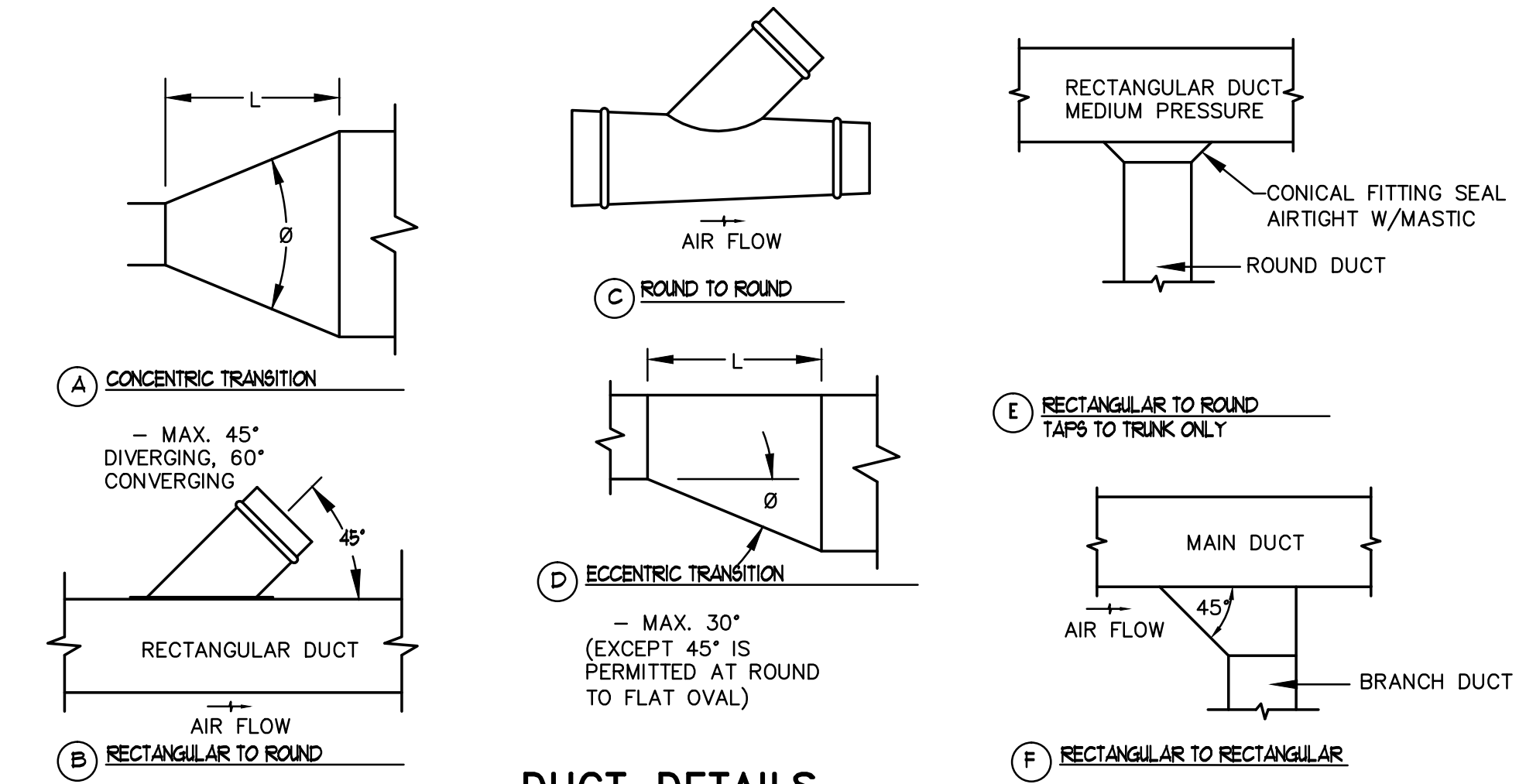


KITCHEN HOOD - GREASE DUCT RISER
 KITCHEN EXHAUST HOOD INSTALLATION (KH-1 & KH-2)



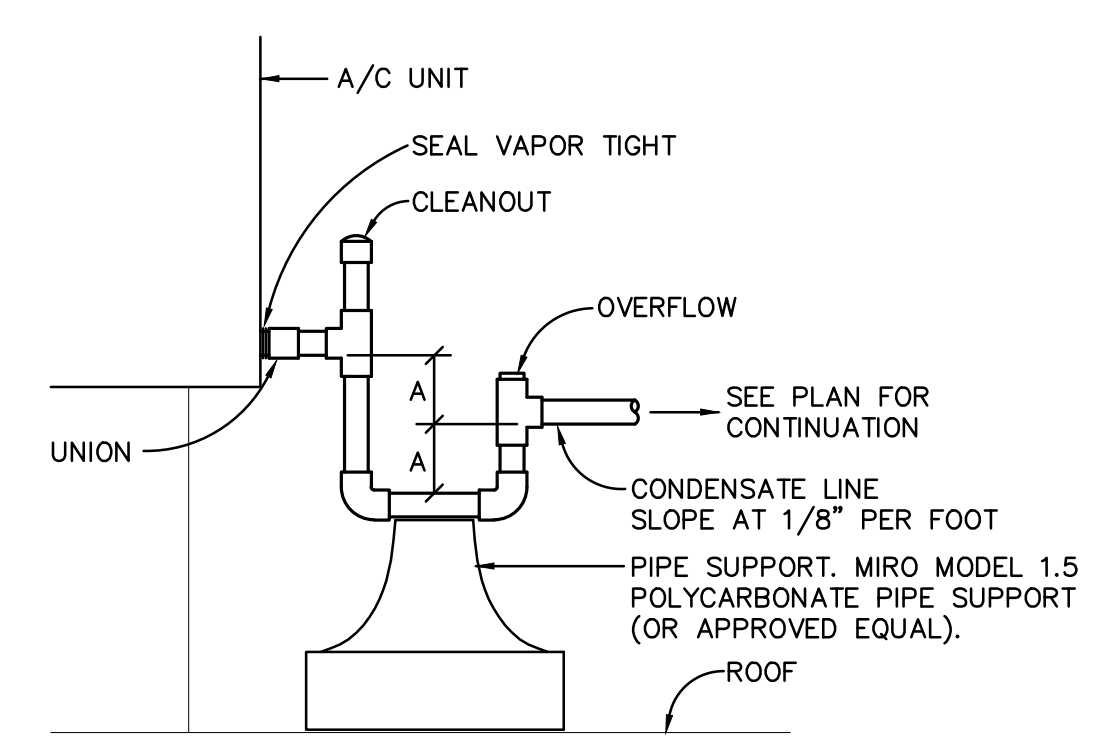
HOOD EXHAUST FAN ROOF CURB DETAIL
 NOT TO SCALE

NOTE:
 MOUNTING MEETS THE WIND PRESSURE REQUIREMENTS FOR THE FLORIDA MECHANICAL BUILDING CODE, 2014 EDITION, SECTION 301.15



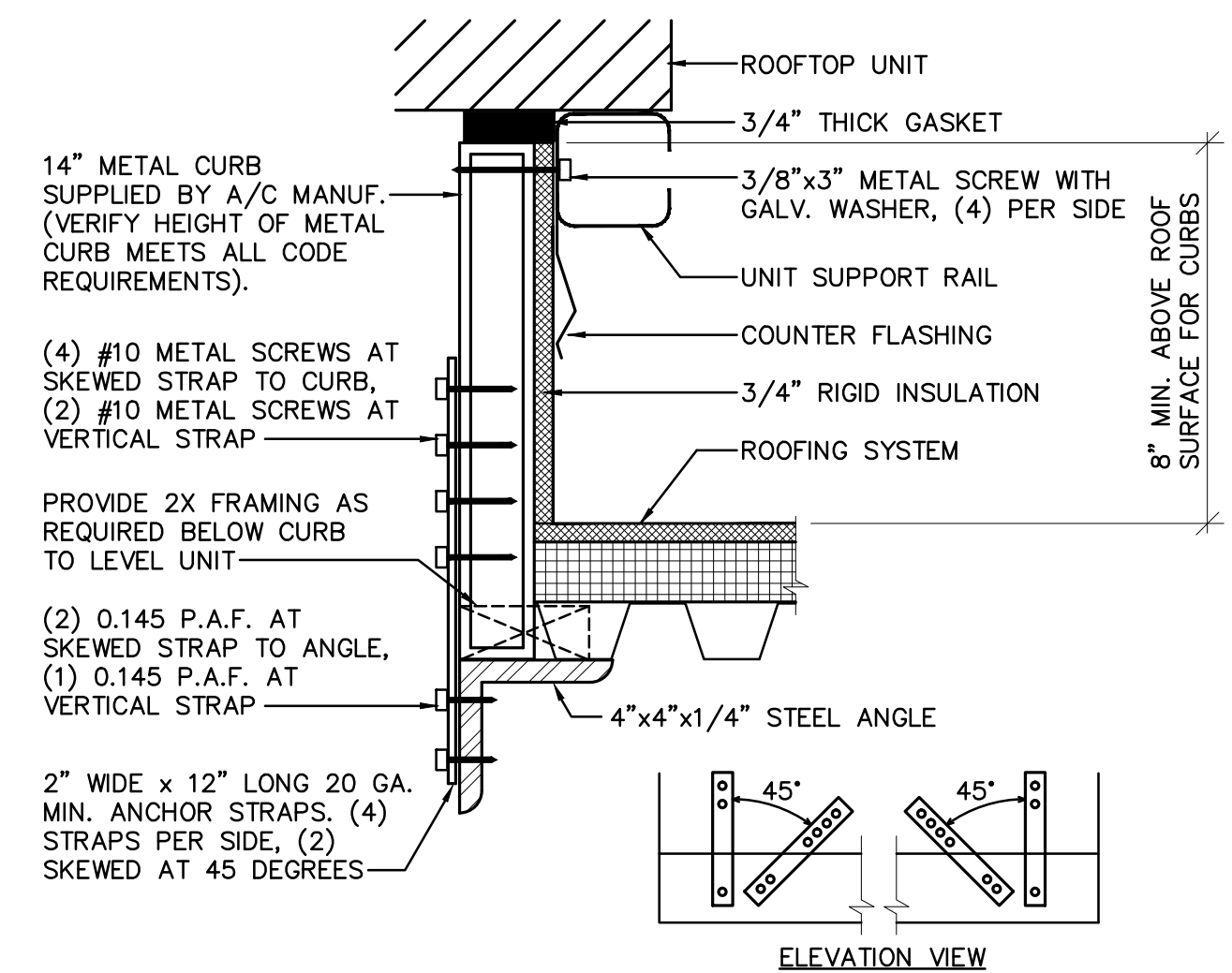
DUCT DETAILS
 NOT TO SCALE

NOTE: USE PLAN AS GUIDE TO FITTING TYPE.

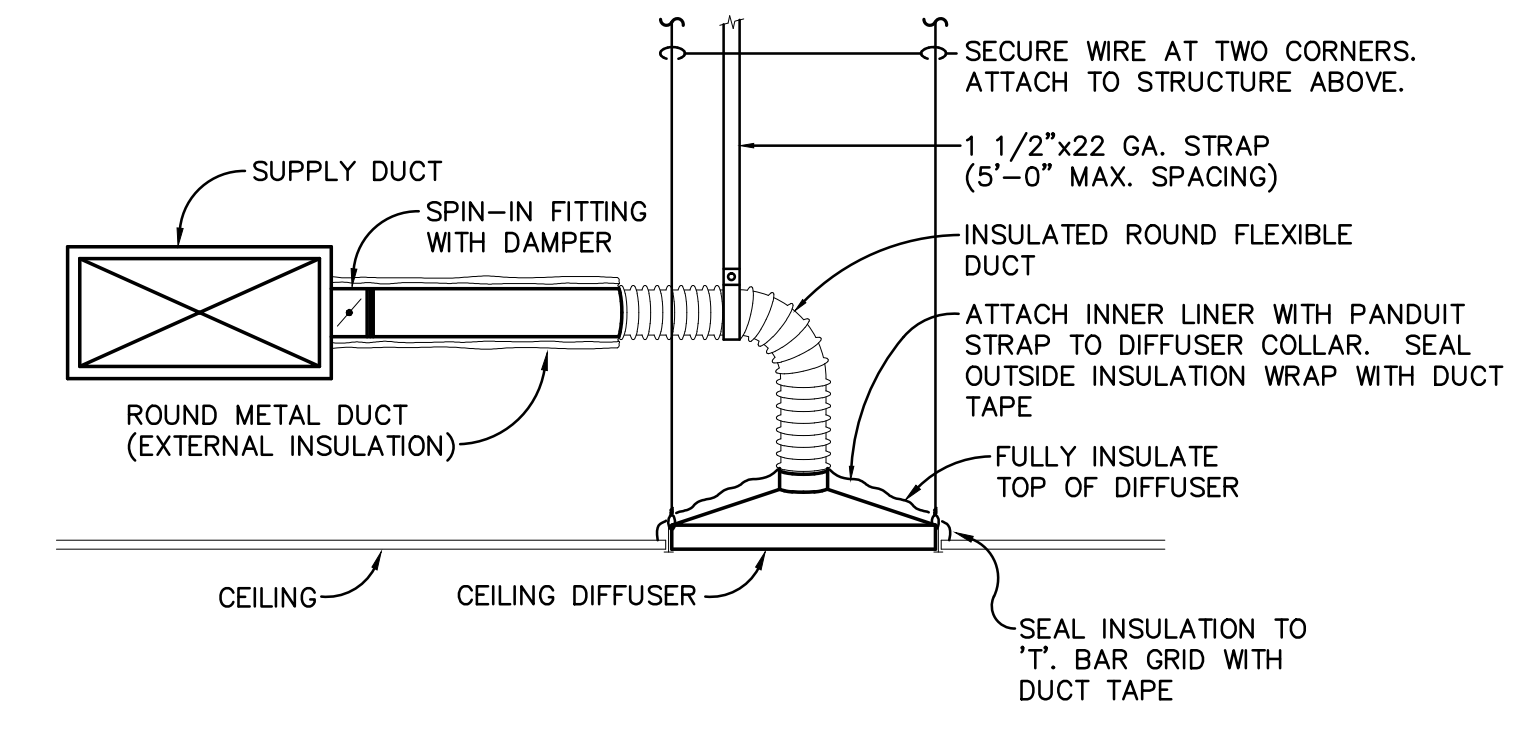


MAX. TONS	CONDENSATE PIPE SIZE	A = TOTAL FAN SUCTION PRESSURE + 1 INCH
2	3/4"	
5	1"	
30	1 1/4"	
50	1 1/2"	

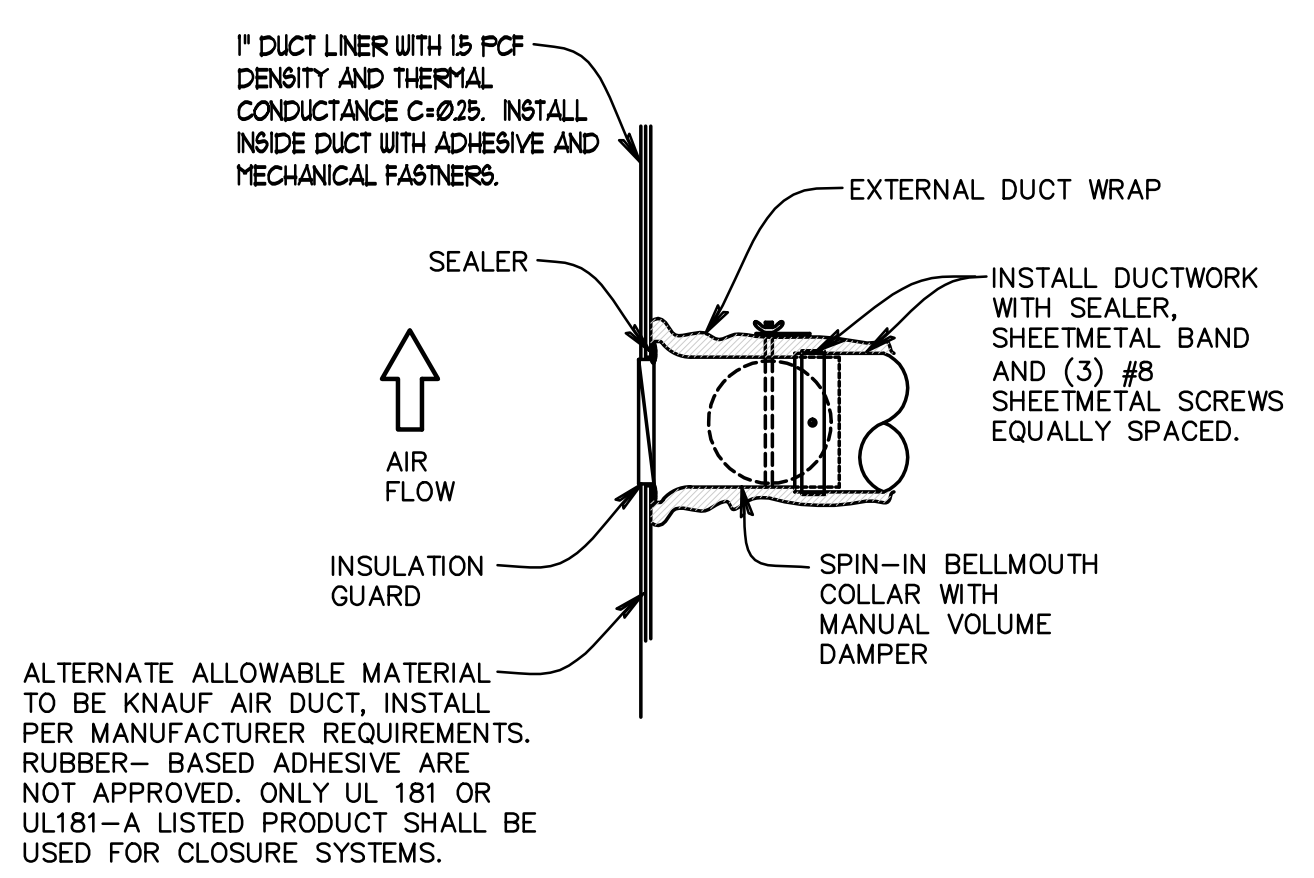
CONDENSATE DRAIN TRAP DETAIL
 NOT TO SCALE



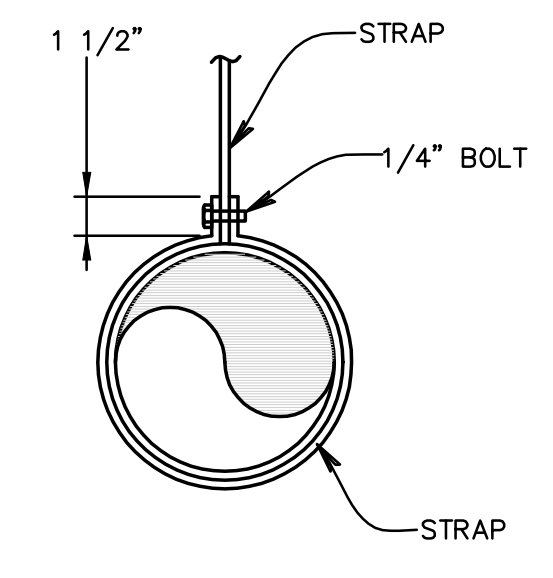
ROOF TOP A/C UNIT MOUNTING DETAIL
 NOT TO SCALE



CEILING DIFFUSER RUNOUT DETAIL
 NOT TO SCALE

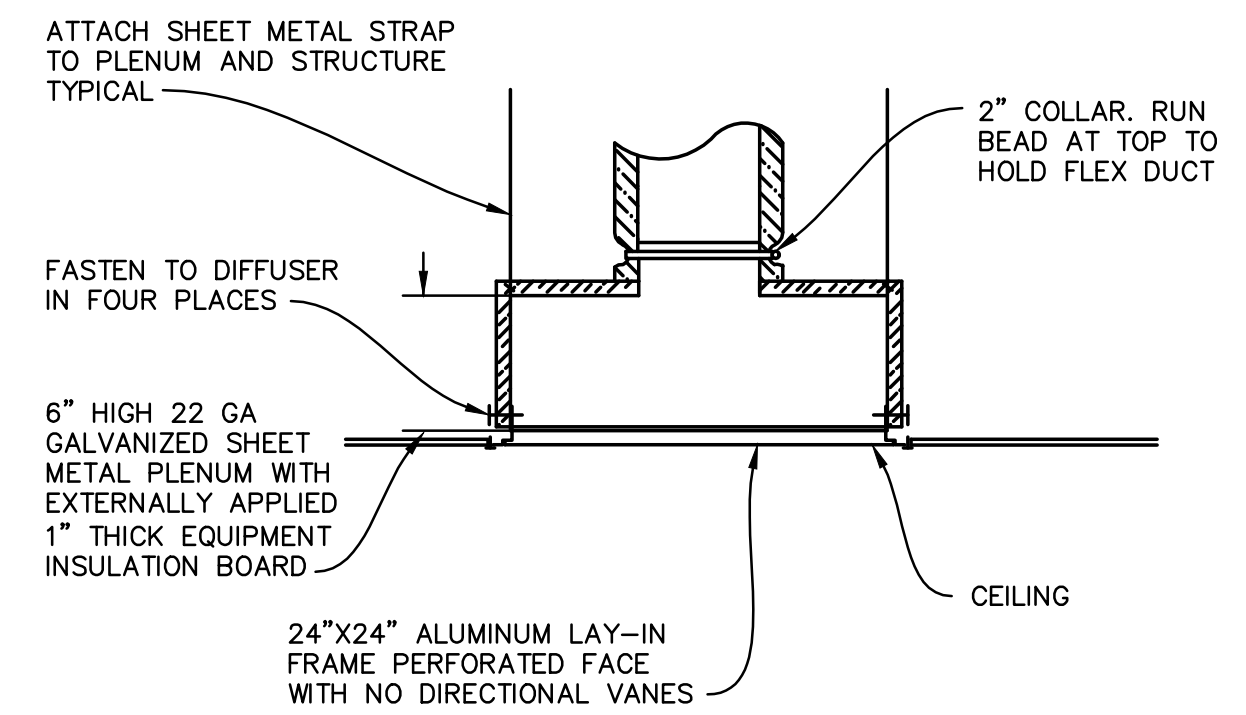


BELLMOUTH SPIN-IN FITTING W/DAMPER DETAIL
 NOT TO SCALE

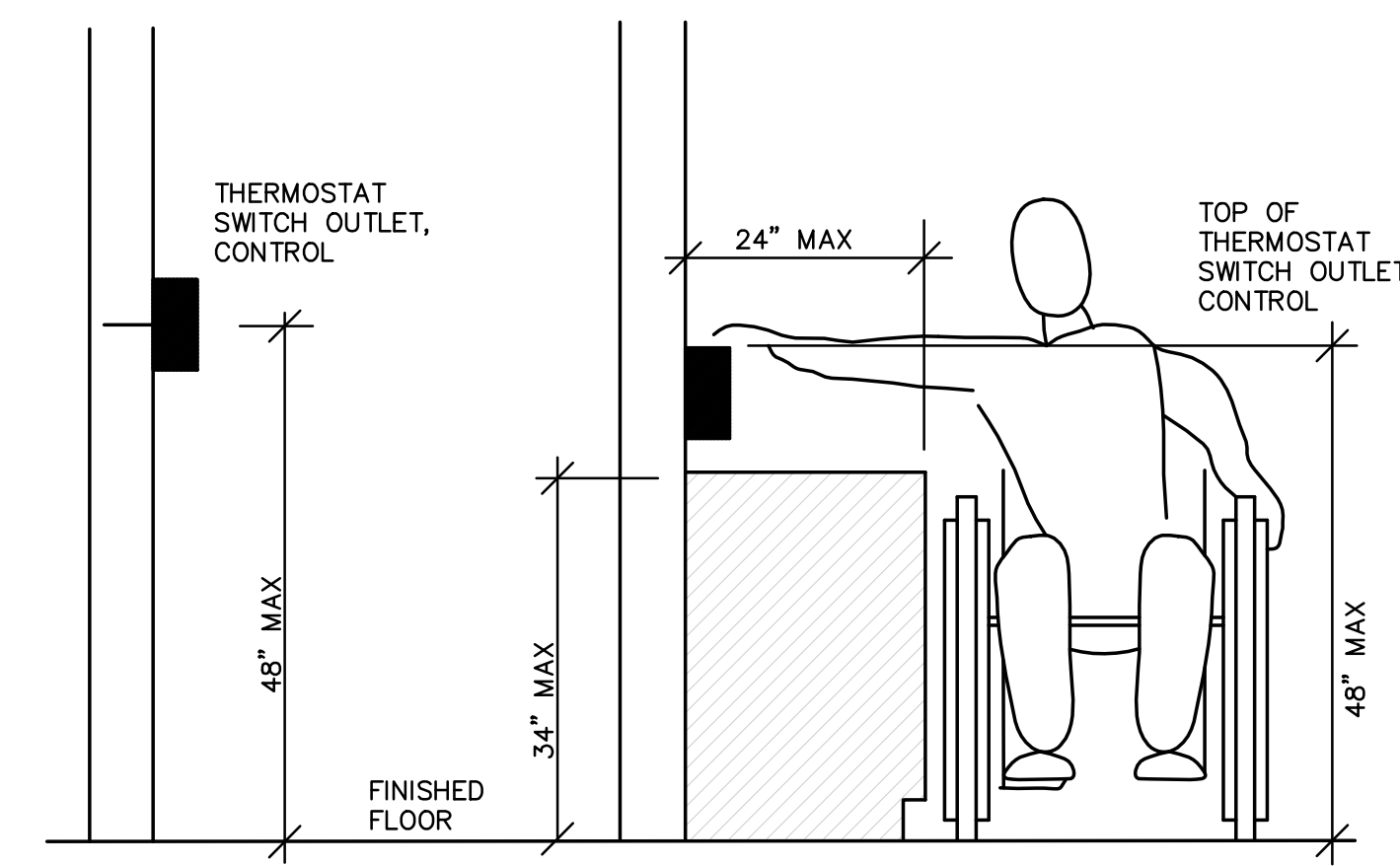


ROUND DUCT HANGING DETAIL
 NOT TO SCALE

NOTE:
 FOR DUCT SUPPORT AND SEISMIC REQUIREMENT, REFER TO SMACNA GUIDELINES AND LOCAL CODE REQUIREMENTS.



KITCHEN MAKEUP AIR DIFFUSER PLENUM DETAIL
 NOT TO SCALE



THERMOSTAT MOUNTING DETAIL
 NOT TO SCALE

REV.	DATE	DESCRIPTION

ISSUE DATE: 09.08.16
 PROJECT NUMBER: 3819
 DRAWN BY: RC
 CHECKED BY: MJC