

OWNER  
City Barbeque LLC  
5168 Blazer Parkway  
Dublin, Ohio 43017  
(614) 583-0999 (Phone)

www.citybbq.com

ARCHITECT  
Design Collective Architecture  
151 E Nationwide Blvd  
Columbus, Ohio 43215  
(614) 464-2880 (Phone)

www.dcollective.com

MEP ENGINEERING  
National Engineering, Ltd  
4635 Trueman Blvd Suite 250  
Hilliard, OH 43026  
(614) 751-9610 (Phone)

www.nationalengineering.com

PROJECT MANAGER  
Keith Willis  
5168 Blazer Parkway  
Dublin, Ohio 43017  
(614) 583-0999x123 (Phone)

kwillis@citybbq.com

FOOD SERVICE  
F.G. Schaefer Co.  
2145 Florence Ave. - P.O. Box 6505  
Cincinnati, OH 45206  
(513) 861-5550 (Phone)

www.fgschaefer.com

COPYRIGHT 2025  
THIS DRAWING IS AN INSTRUMENT OF SERVICE AND AS SUCH REMAINS THE PROPERTY OF NATIONAL ENGINEERING, LTD. PERMISSION FOR USE OF THIS DOCUMENT IS LIMITED AND CAN BE EXTENDED ONLY BY WRITTEN AGREEMENT WITH NATIONAL ENGINEERING, LTD.

PROJECT STATUS

Construction Set



Signed On  
07/16/2025 11:32:27 AM

**City Barbeque**  
City Barbeque, LLC - JOHNSON CITY  
City Barbeque, LLC  
421 N State of Franklin Rd.  
Johnson City, TN 37604

REVISIONS

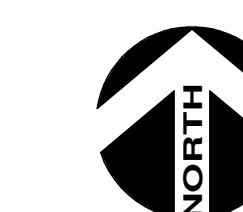
#	Description	Date
1	VE UPDATES	06.26.2025
2	OWNER UPDATES	07.16.25

INITIAL ISSUE DATE  
13 MAY 2025

PROJECT NO.  
2402051

HVAC PLAN

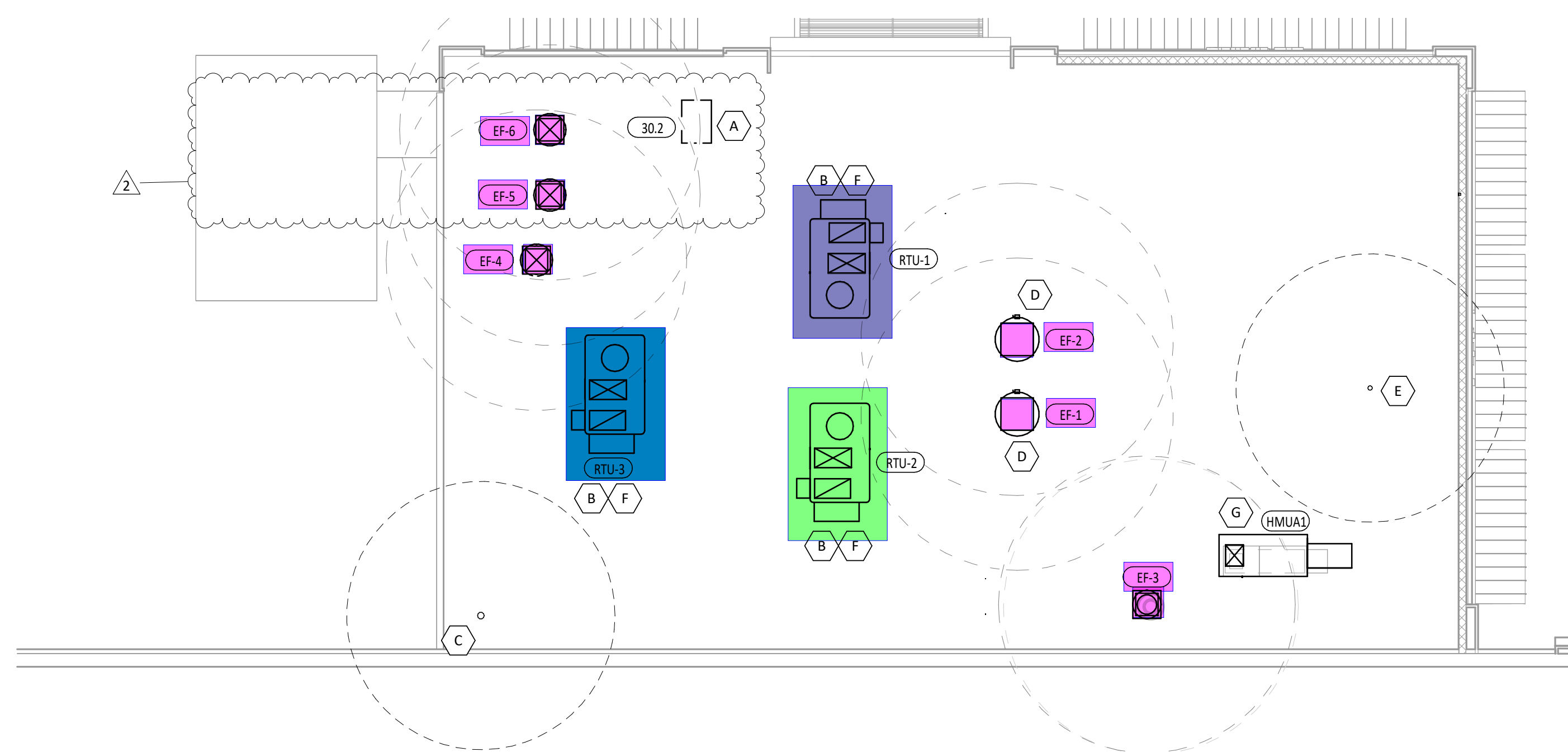
**M1.0**



**KEYNOTES - HVAC ROOF PLAN**

- A INSTALL REMOTE CONDENSING UNIT FOR WALK-IN COOLER ON COOLER ROOF. INSTALL REFRIGERANT LINE SET, THERMOSTATIC EXPANSION VALVE, SOLENOID VALVE, TEMPERATURE CONTROL, SIGHT GLASS, FILTER DRIER, AND PRESSURE CONTROL TRAP AND SLOPE REFRIGERANT LINES PER MANUFACTURER'S RECOMMENDATIONS. SEAL PIPING PENETRATIONS THROUGH COOLER ROOF. INSTALLATION SHALL COMPLY WITH ASHRAE/ANSI STANDARD 15.
- B INSTALL MECHANICAL EQUIPMENT PER MANUFACTURER'S INSTALLATION INSTRUCTIONS. CLEARANCES FROM MECHANICAL INTAKES.
- C WATER HEATER CONCENTRIC VENT LOCATION, SHOWN FOR REFERENCE. MAINTAIN CODE-REQUIRED CLEARANCES FROM MECHANICAL INTAKES.
- D INSTALL EXHAUST FAN ON ROOF PER MANUFACTURER'S INSTALLATION INSTRUCTIONS AND DETAIL 6/M2.0.
- E SANITARY VENT THROUGH ROOF IN THIS LOCATION, SHOWN FOR REFERENCE. MAINTAIN CODE-REQUIRED CLEARANCE TO MECHANICAL INTAKES.
- F PROVIDE CONDENSATE TRAP FOR RTU PER DETAIL 7/M2.0.
- G INSTALL INVERTED SUPPLY ADAPTER FOR MAU CONNECTION TO EXISTING ROOF CURB.

**2 HVAC PLAN - ROOF**  
Scale: 1/8" = 1'-0"



**KEYNOTES - HVAC PLAN**

- 1 REFER TO ARCHITECTURAL SHEETS FOR GRILL, REGISTER AND DIFFUSER LOCATIONS. TYPICAL.
- 2 PROVIDE AUDIO/VISUAL REMOTE SMOKE DETECTOR ANNUNCIATOR WITH REMOTE KEY OPERATED RESET. WIRE A UNIT BACK TO EACH SMOKE DETECTOR. MOUNT UNIT 60" AFF. TYPICAL.
- 3 INSTALL REMOTE TEMPERATURE SENSOR FOR HOOD AT THIS LOCATION @ 60" AFF. COORDINATE LOCATION WITH EQUIPMENT. PROVIDE (2) #18 GAUGE THERMISTOR CABLE FROM TEMPERATURE SENSOR TO HOOD CONTROL PANEL.
- 4 PROVIDE REMOTE TEMPERATURE SENSOR FOR RTU-1 AND HOOD AT THIS LOCATION @ 60" AFF. COORDINATE LOCATION WITH EQUIPMENT.
- 5 PROVIDE REMOTE TEMPERATURE SENSOR FOR RTU-2 AT THIS LOCATION @ 60" AFF. COORDINATE LOCATION WITH EQUIPMENT AND WALL MOUNTED ARTWORK.
- 6 PROVIDE 24/7 PROGRAMMABLE THERMOSTAT FOR RTU-1 AND RTU-2 AT THIS LOCATION AT 48" AFF. LABEL THERMOSTAT ACCORDING TO UNIT/AREA SERVED.
- 7 PROVIDE SMOKER FLUE, SUPPORTS AND TERMINATION AS SHOWN IN DETAIL 8/M2.0.
- 8 PROVIDE SUPPLY DIFFUSER CONNECTION TO SUPPLY SYSTEM PER DETAIL 2/M2.0. TYPICAL.
- 9 32/16 DUCT UP FOR TRANSITION TO RTU-1 RETURN CONNECTION IN ROOF CURB. RTU-1 SHALL HAVE AN INTEGRAL SMOKE DETECTOR MOUNTED IN THE RETURN AIR STREAM. INTERLOCK SMOKE DETECTOR TO RTU-1 OPERATION.
- 10 32/16 DUCT UP FROM BUILDING SUPPLY THROUGH ROOF. TRANSITION TO RTU-1 SUPPLY CONNECTION IN ROOF CURB.
- 11 18/40 DUCT UP FOR TRANSITION TO RTU-2 RETURN CONNECTION IN ROOF CURB. RTU-2 SHALL HAVE AN INTEGRAL SMOKE DETECTOR MOUNTED IN THE RETURN AIR STREAM. INTERLOCK SMOKE DETECTOR TO RTU-2 OPERATION.
- 12 18/40 DUCT UP FROM BUILDING SUPPLY THROUGH ROOF. TRANSITION TO RTU-2 SUPPLY CONNECTION IN ROOF CURB.
- 13 28/12 DUCT DOWN TO MAKEUP AIR PSP DUCT CONNECTION. TRANSITION TO SUPPLY PLENUM OPENING SIZE. TYPICAL FOR 2.
- 14 20/20 DUCT UP THROUGH ROOF. TRANSITION TO MAU-1 SUPPLY CONNECTION IN ROOF CURB.
- 15 HOLD ALL DUCTWORK IN THE DINING ROOM ABOVE THE BOTTOM CHORD OF THE TRUSS.
- 16 10" Ø DUCT DOWN TO 16/8 HVAC PSP DUCT CONNECTION. TRANSITION TO SUPPLY PLENUM OPENING SIZE. TYPICAL FOR 2 PER HOOD.
- 17 PROVIDE TYPE I KITCHEN HOOD. SUPPORT HOOD PER MANUFACTURER'S INSTALLATION INSTRUCTIONS. INSTALL HOOD ACCORDING TO THE REQUIREMENTS OF ITS LISTING, IN COMPLIANCE WITH NFPA 96, THE BUILDING CODE, AND AUTHORITIES HAVING JURISDICTION. HOOD SHALL HAVE AN INTEGRAL DUCT COLLAR TEMPERATURE SENSOR TO AUTOMATICALLY ENERGIZE THE EXHAUST FANS IF COOKING TEMPERATURES ARE DETECTED. TRANSITION FROM HOOD CONNECTIONS TO DUCT SIZES SHOWN AND EXTEND TO ROOF MOUNTED EXHAUST FAN. EXHAUST DUCT SYSTEM TO BE CONSTRUCTED WATER AND AIR TIGHT. PROVIDE CLEANOUTS PER CODE. INSTALL PER DETAILS 4 & 5/M2.0 AND PER THE MANUFACTURER'S INSTALLATION INSTRUCTIONS.
- 18 24/10 DUCT DOWN TO MAKEUP AIR PSP DUCT CONNECTION. TRANSITION TO SUPPLY PLENUM OPENING SIZE. TYPICAL FOR 3.
- 19 14" Ø DUCT UP FROM HOOD HD-1 UP THROUGH ROOF TO EXHAUST FAN EF-1 ON ROOF. PROVIDE RADIUS ELBOWS WITH AN INSIDE RADIUS OF 0.5W AT ELBOWS IN GREASE DUCT. PROVIDE FIREWRAP ON DUCT PER DETAIL 1/M2.0.
- 20 16" Ø DUCT UP FROM HOOD HD-2 THROUGH ROOF TO EXHAUST FAN EF-2 ON ROOF. PROVIDE RADIUS ELBOWS WITH AN INSIDE RADIUS OF 0.5W AT ELBOWS IN GREASE DUCT. PROVIDE FIREWRAP ON DUCT PER DETAIL 1/M2.0.
- 21 8/8" DUCT UP THROUGH ROOF TO EXHAUST FAN EF-4 ON ROOF.

**1 HVAC PLAN**  
Scale: 1/4" = 1'-0"

