

A

ABBREVIATION table with columns for HVAC, Electrical, and Mechanical symbols and their corresponding descriptions.

B

GENERAL SYMBOLS table listing symbols for PIPING TIE-IN POINT, DUCT TIE-IN POINT, LIMIT OF DEMOLITION, and SECTION DESIGNATION.

C

HVAC PIPING

Main HVAC and PIPING symbols table with columns for HVAC components (ducts, dampers, valves) and PIPING components (pipes, valves, fittings).

E

- HVAC GENERAL NOTES: 1. CONTRACTOR SHALL COORDINATE WITH OWNER BEFORE STARTING WORK... 2. ALL WORK SHALL BE PERFORMED AS PER STATE AND LOCAL CODES... 3. CONTRACTOR SHALL, DURING THE JOB, MAINTAIN ALL WORKING AREAS FREE FROM RUBBISH AND DEBRIS...

A/Z Design Services, LLC logo and contact information: 242 Trumbull Street, Hartford, CT 06103.

CONFIDENTIAL & PROPRIETARY: This document contains confidential and proprietary information which is the property of the Owner and must be safeguarded accordingly.

SPAN CONSTRUCTION & ENGINEERING, INC. logo and address: 3353 YEAGER DRIVE, MADERA, CA 95367.

WARE MALCOMB ARCHITECTURE & CIVIL ENGINEERING: 4680 CHABOT DRIVE, SUITE 300, PLEASANTON, CA 94588.

ELEVATED DESIGN INC CONSULTING ENGINEERS logo and address: 1212 Hancock Street, Suite 300, QUINCY, MA 02269.

JENSEN HUGHES logo and address: 117 METRO CENTER BLVD, SUITE 1002, WARWICK, RI 02886.

Vizion Utility PARTNERS logo and address: 7901 STONERIDGE DRIVE, SUITE 200, PLEASANTON, CA 94588.

dialectic ENGINEERING logo and address: 2100 20th Street, Suite 200, QUINCY, MA 02269.

PROJECT: INTEGRATED FOOD RECOVERY FACILITY, 4407 WEST MAIN STREET, TURLOCK, CA 95380.

KEY PLAN table with columns for REV, DESCRIPTION, and DATE.

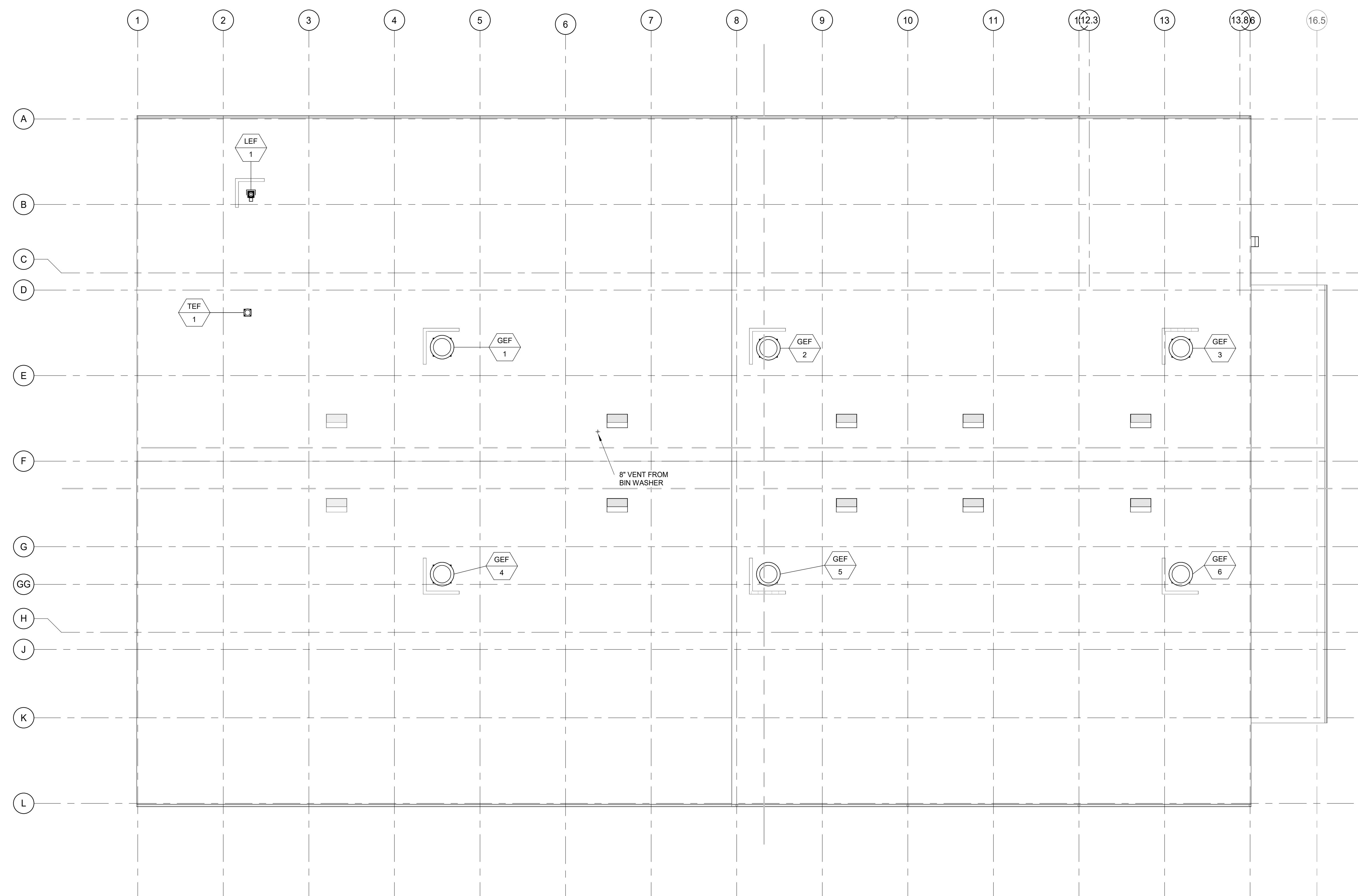
MECHANICAL logo and professional seal for Robert A. Harris, No. M 26441, Mechanical, State of California, 02/21/2023.

MECHANICAL SYMBOLS, LEGENDS AND ABBREVIATIONS table with columns for REV, DESCRIPTION, and DATE.

MECHANICAL logo and professional seal for Robert A. Harris, No. M 26441, Mechanical, State of California, 02/21/2023.

MECHANICAL logo and professional seal for Robert A. Harris, No. M 26441, Mechanical, State of California, 02/21/2023.

MECHANICAL logo and professional seal for Robert A. Harris, No. M 26441, Mechanical, State of California, 02/21/2023.



AZ DESIGN SERVICES, LLC
 242 Trumbull Street
 Second Floor
 Hartford, CT 06103
 800.400.2420 | a-zcorp.com

This document is an instrument of professional service, and shall not be used, in whole or in part, for any project other than for which it was created without the express, written consent of AZ Design Services, LLC or AZ Corporation. Any unauthorized use, reuse, modification or alteration, including automated conversion of this document shall be at the user's sole risk without liability or legal exposure to AZ Design Services, LLC, or AZ Corporation.

CONFIDENTIAL & PROPRIETARY
 This document contains confidential and proprietary information which is the property of the Owner and must be safeguarded accordingly. Do not disclose information contained herein to any outside party. Dispose of this document either by shredding or controlled waste receptacles only. This document may not be disposed of via normal trash. When in use, this document must be under your control and care at all time. When not in use, this document must be properly filed and secured.

CONSULTANTS

SPAN CONSTRUCTION & ENGINEERING, INC.
 THE LEADER IN THE STEEL BUILDING INDUSTRY
 WWW.SPANCONSTRUCTION.COM
 3353 YEAGER DRIVE
 MADERA, CA 93637
 559.661.1111

WARE MALCOMB

ARCHITECTURE | CIVIL ENGINEERING
 PLANNING | BRANDING
 INTERIORS | BUILDING MEASUREMENT

4883 CHABOT DRIVE, SUITE 300
 PLEASANTON, CA 94588
 925.244.9620 | WAREMALCOMB.COM

ELEVATED DESIGN INC
 CONSULTING ENGINEERS
 USING LESS ENERGY. BY DESIGN.
 1212 HAMMOCK STREET, SUITE 300
 QUINCY, MA 02269
 P: 724-561-6329

JENSEN HUGHES

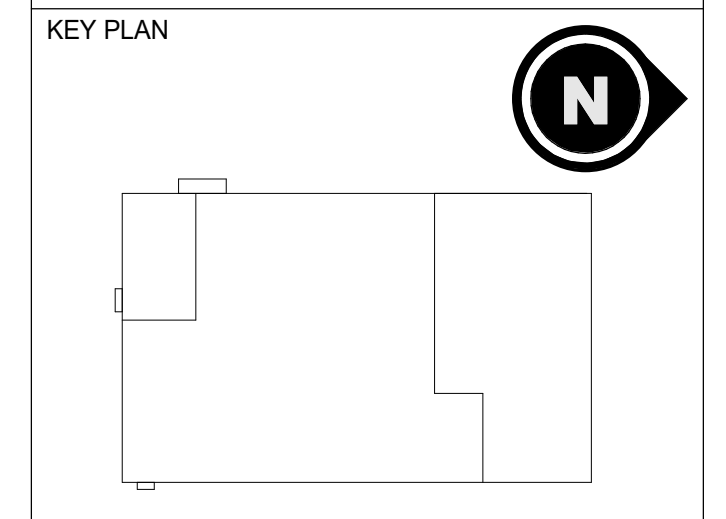
FIRE PROTECTION
 117 METRO CENTER BLVD, SUITE 1002
 WARWICK, RI 02886
 401.214.3168 | JENSENHUGHES.COM

Vizion Utility PARTNERS

UTILITY DESIGN AND CONSULTING
 7901 STONERIDGE DRIVE, SUITE 200
 PLEASANTON, CA 94588
 925.682.1114 | VIZIONUTILITY.COM

PROJECT

divert
 INTEGRATED FOOD RECOVERY FACILITY
 4407 WEST MAIN STREET
 TURLOCK, CA 95380



REV	DESCRIPTION	DATE
0	ISSUED FOR PERMIT	10/28/2022
1	BULLETIN 2 CORE & SHELL	02/03/2023

SEAL



MECHANICAL

APPROVED

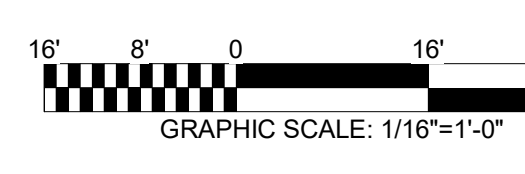
ROOF PLAN

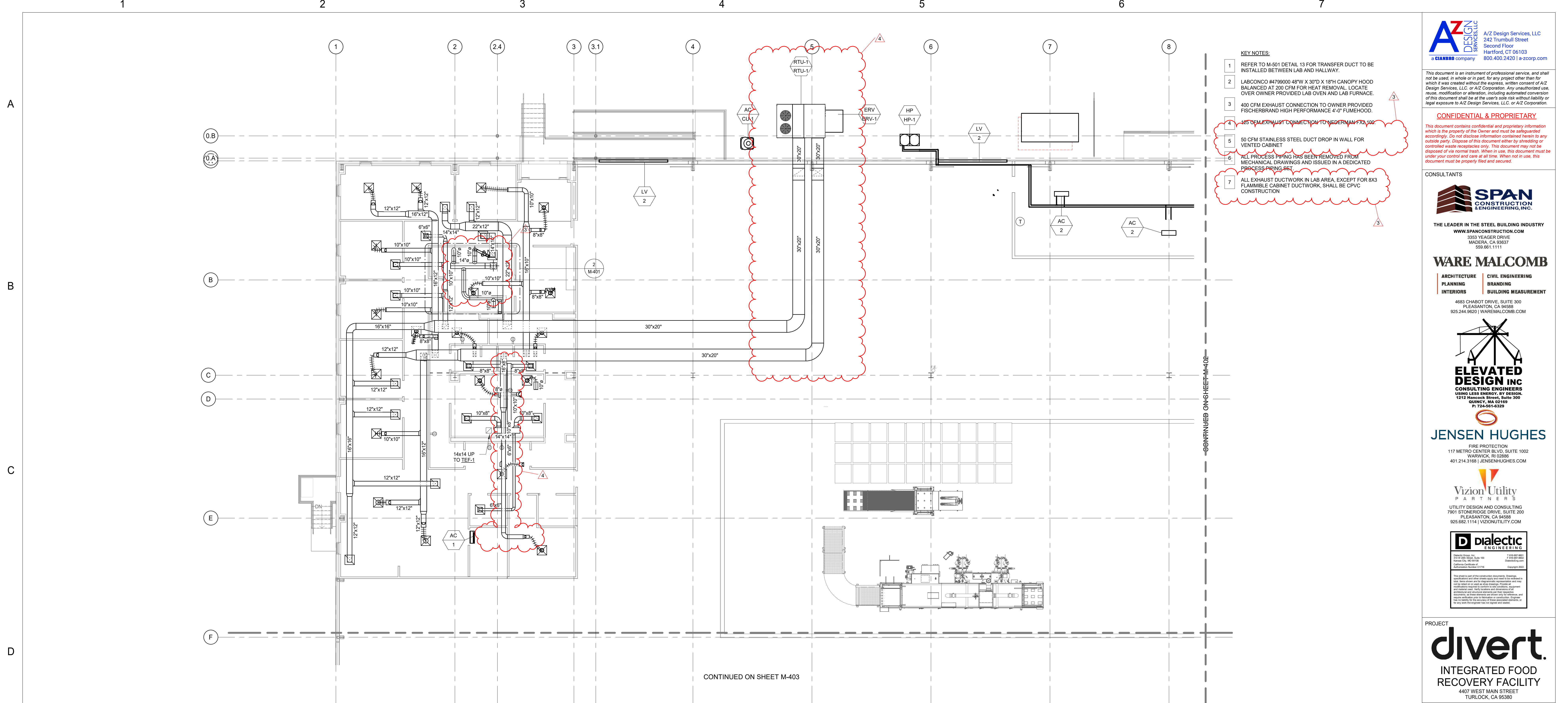
BUILDING & SAFETY

DRAWN BY: MJT
 CHECKED BY: WJS
 SCALE: 1/16" = 1'-0"
 PROJECT #: XB1512

M-102

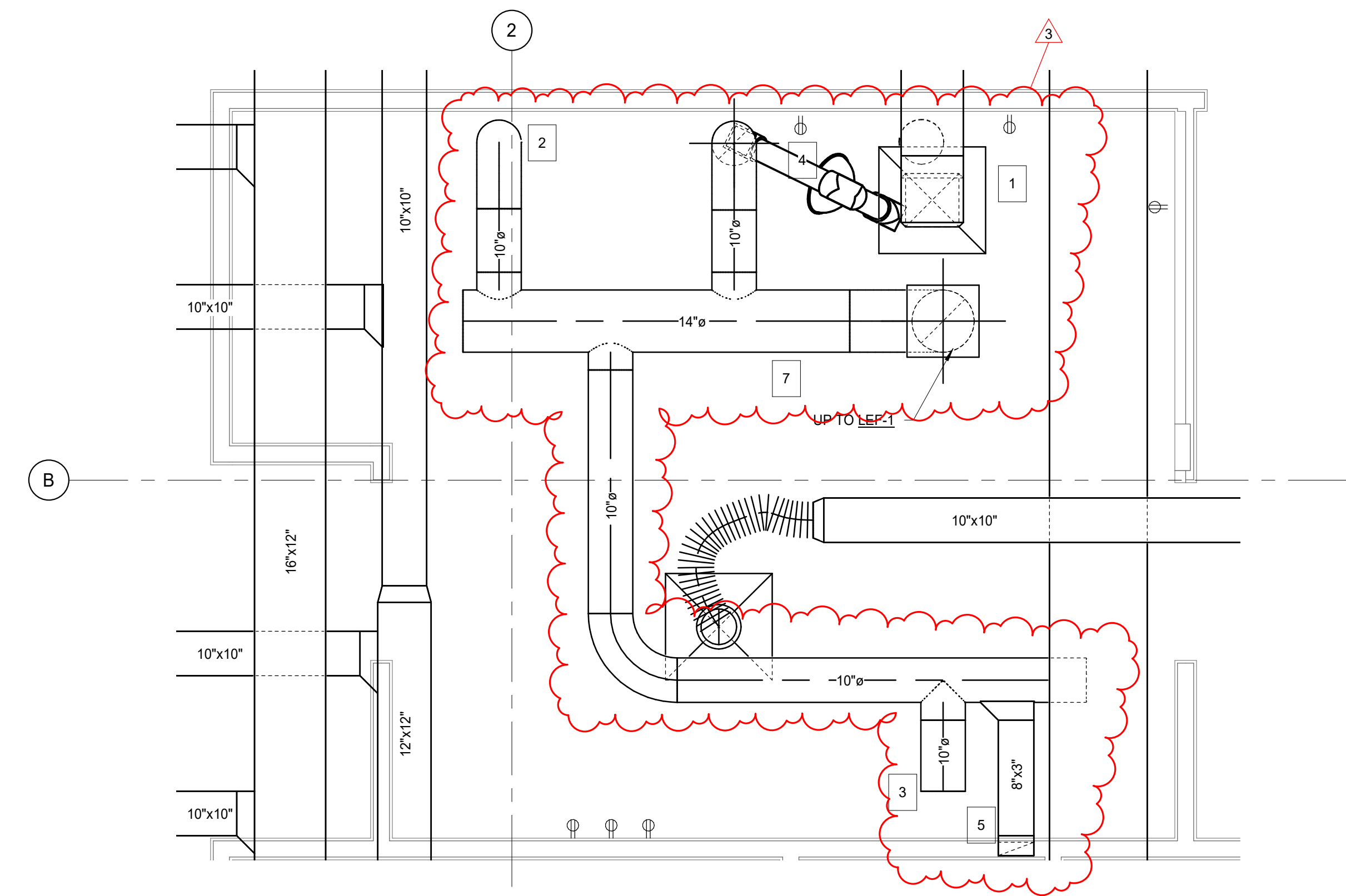
REVIEWED FOR CODE COMPLIANCE
 August 15, 2023
 BUREAU VERITAS NORTH AMERICA, INC.





- KEY NOTES:**
- REFER TO M-501 DETAIL 13 FOR TRANSFER DUCT TO BE INSTALLED BETWEEN LAB AND HALLWAY.
 - LABCONCO #4799000 48"W X 30"D X 18"H CANOPY HOOD BALANCED AT 200 CFM FOR HEAT REMOVAL. LOCATE OVER OWNER PROVIDED LAB OVEN AND LAB FURNACE.
 - 400 CFM EXHAUST CONNECTION TO OWNER PROVIDED FISCHERBRAND HIGH PERFORMANCE 4'-0" FUMEHOOD.
 - 125 CFM EXHAUST CONNECTION TO NEBERMANN FX-100.
 - 50 CFM STAINLESS STEEL DUCT DROP IN WALL FOR VENTED CABINET.
 - ALL PROCESS PIPING HAS BEEN REMOVED FROM MECHANICAL DRAWINGS AND ISSUED IN A DEDICATED PROCESS PIPING SET.
 - ALL EXHAUST DUCTWORK IN LAB AREA EXCEPT FOR 8X3 FLAMMABLE CABINET DUCTWORK, SHALL BE CPVC CONSTRUCTION.

1 FLOOR PLAN
1/8" = 1'-0"



2 ENLARGED LAB
1/2" = 1'-0"

This document is an instrument of professional service, and shall not be used, in whole or in part, for any project other than that for which it was created without the express, written consent of AZ Design Services, LLC or AZ Corporation. Any unauthorized use, reuse, modification or alteration, including automated conversion of this document shall be at the user's sole risk without liability or legal exposure to AZ Design Services, LLC or AZ Corporation.

CONFIDENTIAL & PROPRIETARY
This document contains confidential and proprietary information which is the property of the Owner and must be safeguarded accordingly. Do not disclose information contained herein to any outside party. Dispose of this document either by shredding or controlled waste receptacles only. This document may not be disposed of via normal trash. When in use, this document must be under your control and care at all times. When not in use, this document must be properly filed and secured.

CONSULTANTS



THE LEADER IN THE STEEL BUILDING INDUSTRY
WWW.SPANCONSTRUCTION.COM
3353 YEAGER DRIVE
MADERA, CA 93637
559.661.1111

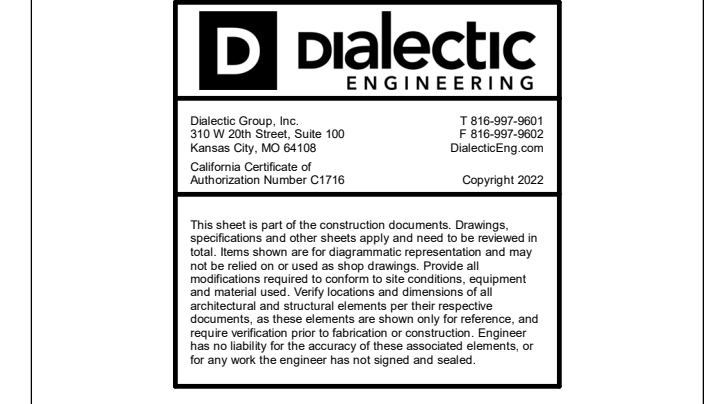
WARE MALCOMB

ARCHITECTURE | CIVIL ENGINEERING
PLANNING | BRANDING
INTERIORS | BUILDING MEASUREMENT
4883 CHABOT DRIVE, SUITE 300
PLEASANTON, CA 94588
925.244.9620 | WAREMALCOMB.COM

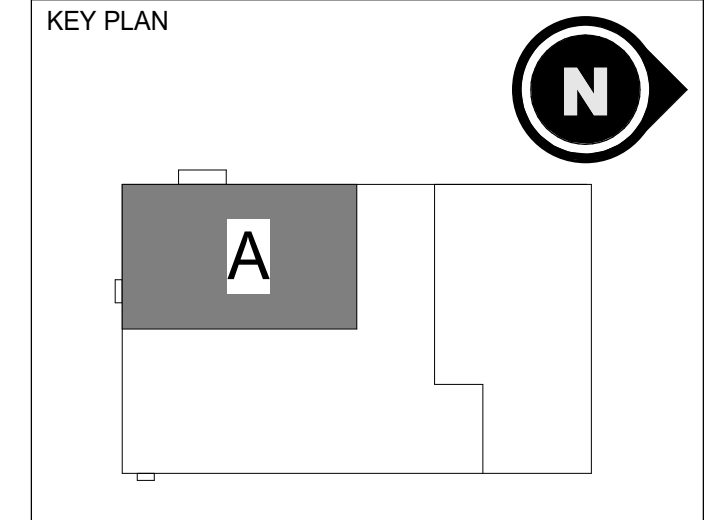


JENSEN HUGHES
FIRE PROTECTION
117 METRO CENTER BLVD, SUITE 1002
WARWICK, RI 02886
401.214.3168 | JENSENHUGHES.COM

Vizion Utility PARTNERS
UTILITY DESIGN AND CONSULTING
7901 STONERIDGE DRIVE, SUITE 200
PLEASANTON, CA 94588
925.682.1114 | VIZIONUTILITY.COM



PROJECT
divert.
INTEGRATED FOOD RECOVERY FACILITY
4407 WEST MAIN STREET
TURLOCK, CA 95380



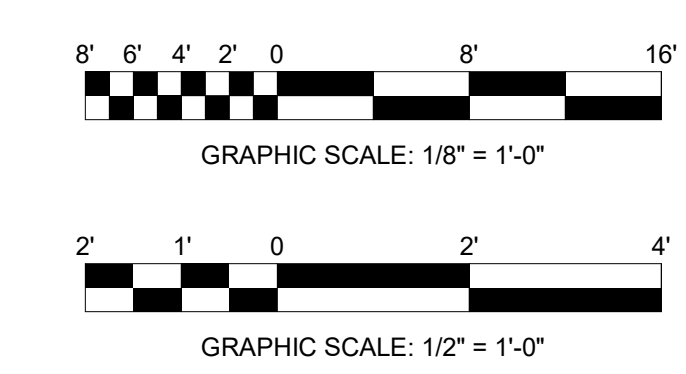
REV	DESCRIPTION	DATE
0	ISSUED FOR PERMIT	10/28/2022
1	BULLETIN 2 CORE & SHELL	02/03/2023
2	BULLETIN 12 - SUPPLEMENTAL STEEL	09/08/2023
3	BULLETIN 14 - PIDs	08/25/2023
4	BULLETIN 17 - MECHANICAL AND ARCHITECTURAL UPDATES	09/13/2023

SEAL

MECHANICAL
ENLARGED PROCESS AREA A

DRAWN BY: MJT
CHECKED BY: WJS
SCALE: As indicated
PROJECT #: XB1512

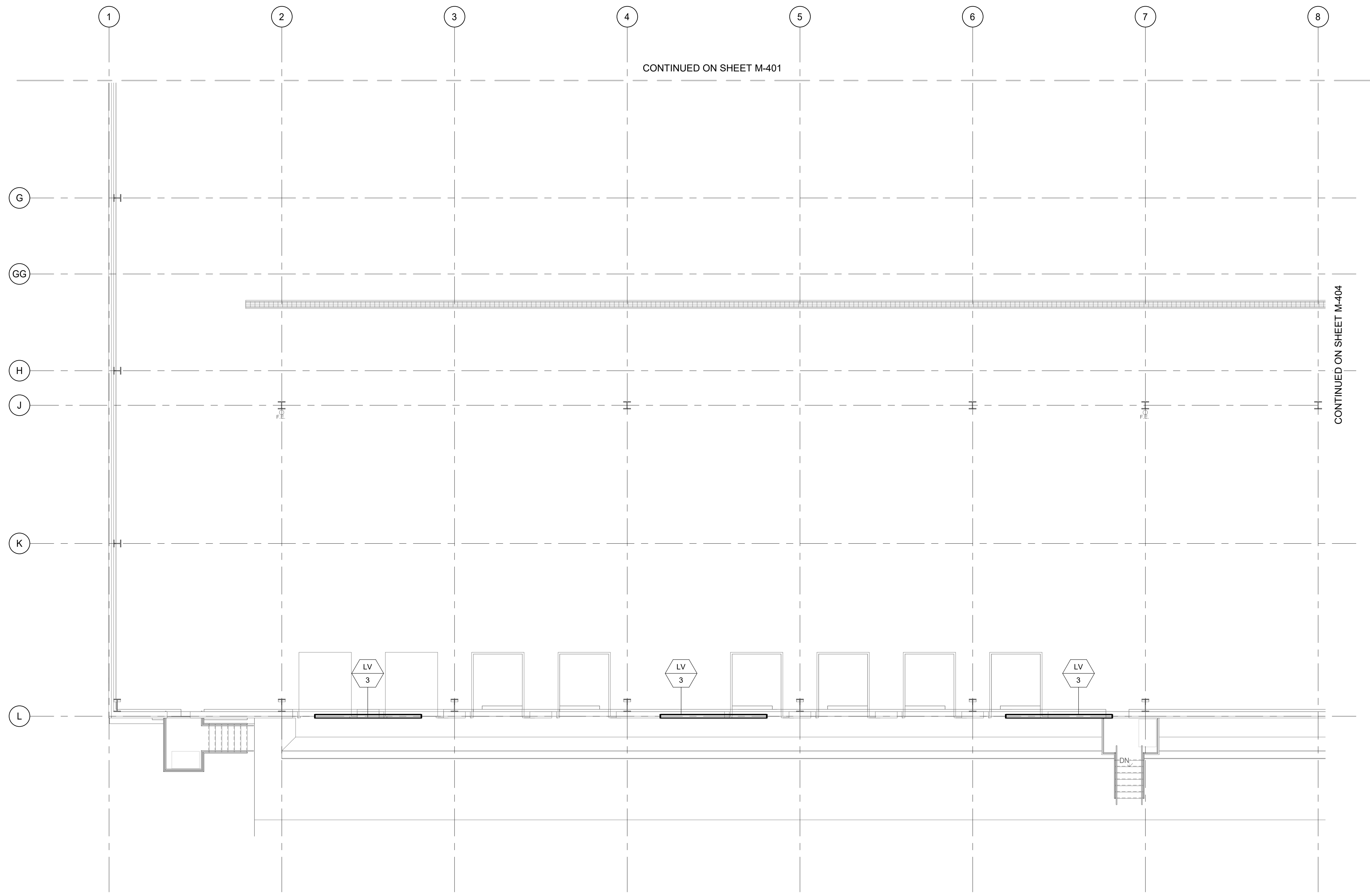
M-401



9/14/2023 2:32:49 PM Autodesk Docs://divert/Turlock/Divert/Turlock CA.rvt

KEYED NOTES

1 ALL PROCESS PIPING HAS BEEN REMOVED FROM MECHANICAL DRAWINGS AND ISSUED IN A DEDICATED PROCESS PIPING SET.



AZ DESIGN SERVICES, LLC
 242 Trumbull Street
 Second Floor
 Hartford, CT 06103
 800.400.2420 | a-zcorp.com

This document is an instrument of professional service, and shall not be used, in whole or in part, for any project other than for which it was created without the express, written consent of AZ Design Services, LLC or AZ Corporation. Any unauthorized use, reuse, modification or alteration, including automated conversion of this document shall be at the user's sole risk without liability or legal exposure to AZ Design Services, LLC, or AZ Corporation.

CONFIDENTIAL & PROPRIETARY

This document contains confidential and proprietary information which is the property of the Owner and must be safeguarded accordingly. Do not disclose information contained herein to any outside party. Dispose of this document either by shredding or controlled waste receptacles only. This document may not be disposed of via normal trash. When in use, this document must be under your control and care at all time. When not in use, this document must be properly filed and secured.

CONSULTANTS

SPAN CONSTRUCTION & ENGINEERING, INC.
 THE LEADER IN THE STEEL BUILDING INDUSTRY
 WWW.SPANCONSTRUCTION.COM
 3353 YEAGER DRIVE
 MADERA, CA 95337
 559.661.1111

WARE MALCOMB

ARCHITECTURE | CIVIL ENGINEERING
 PLANNING | BRANDING
 INTERIORS | BUILDING MEASUREMENT

4883 CHABOT DRIVE, SUITE 300
 PLEASANTON, CA 94588
 925.244.9620 | WAREMALCOMB.COM

ELEVATED DESIGN INC
 CONSULTING ENGINEERS
 USING LESS ENERGY, BY DESIGN.
 1212 HAMMOCK STREET, SUITE 300
 QUINCY, MA 02269
 P: 724-561-6329

JENSEN HUGHES

FIRE PROTECTION
 117 METRO CENTER BLVD, SUITE 1002
 WARWICK, RI 02886
 401.214.3168 | JENSENHUGHES.COM

Vizion Utility PARTNERS

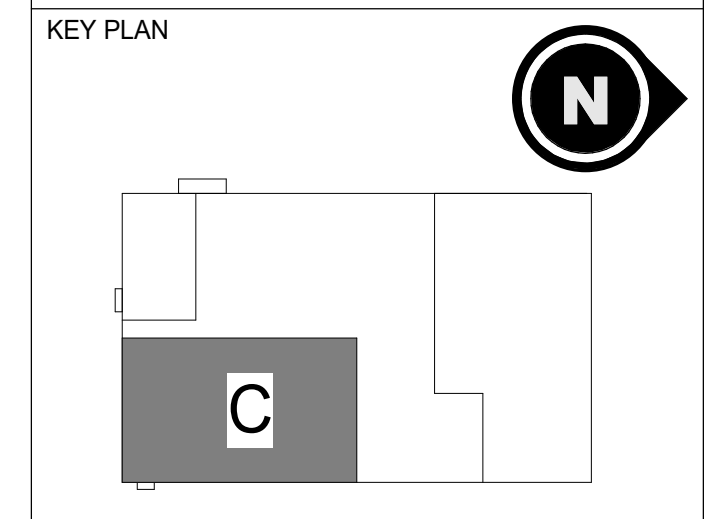
UTILITY DESIGN AND CONSULTING
 7901 STONERIDGE DRIVE, SUITE 200
 PLEASANTON, CA 94588
 925.682.1114 | VIZIONUTILITY.COM

dialectic ENGINEERING

1100 8th Street, Suite 100
 Berkeley, CA 94702
 415.863.8800
 dialecticeng.com

PROJECT

divert
 INTEGRATED FOOD RECOVERY FACILITY
 4407 WEST MAIN STREET
 TURLOCK, CA 95380



REV	DESCRIPTION	DATE
0	ISSUED FOR PERMIT	10/28/2022
1	BULLETIN 2 CORE & SHELL	02/03/2023

SEAL



MECHANICAL

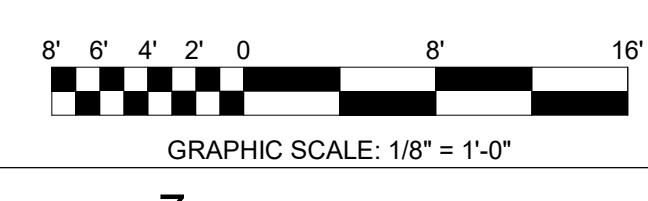
APPROVED

ENLARGED PROCESS AREA C

BUILDING & SAFETY

TURLOCK INC.

DRAWN BY: MJT
 CHECKED BY: WJS
 SCALE: As indicated
 PROJECT #: XB1512

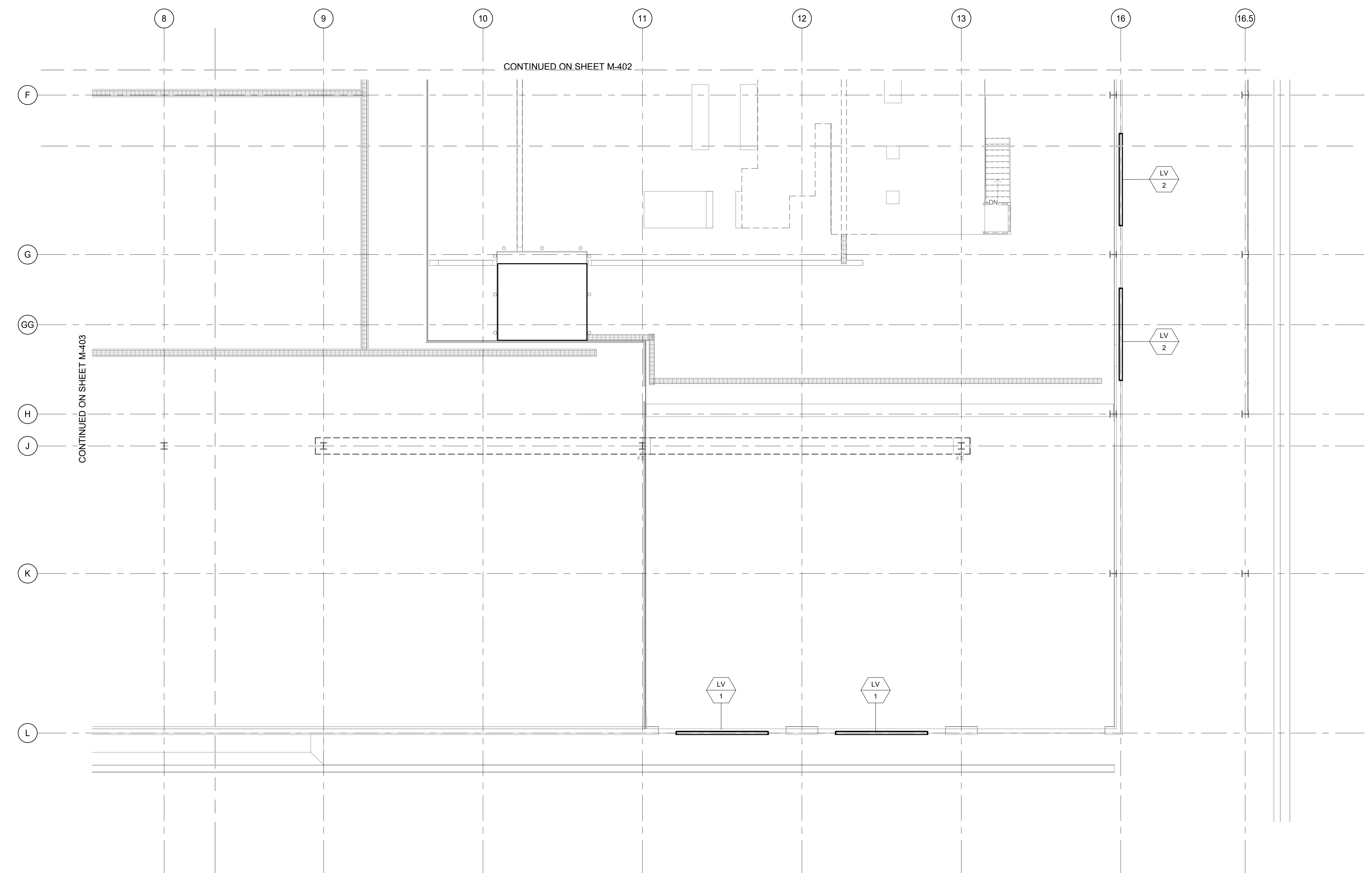


M-403

2/13/2023 3:01:39 PM Autodesk Docs\\Divert\\Turlock\\Divert\\Turlock CA.rvt

KEYED NOTES

1 ALL PROCESS PIPING HAS BEEN REMOVED FROM MECHANICAL DRAWINGS AND ISSUED IN A DEDICATED PROCESS PIPING SET.



AZ DESIGN SERVICES, LLC
 242 Trumbull Street
 Second Floor
 Hartford, CT 06103
 800.400.2420 | e-zcorp.com

This document is an instrument of professional service, and shall not be used, in whole or in part, for any project other than that for which it was created without the express, written consent of AZ Design Services, LLC or AZ Corporation. Any unauthorized use, reuse, modification or alteration, including automated conversion of this document shall be at the user's sole risk without liability or legal exposure to AZ Design Services, LLC or AZ Corporation.

CONFIDENTIAL & PROPRIETARY

This document contains confidential and proprietary information which is the property of the Owner and must be safeguarded accordingly. Do not disclose information contained herein to any outside party. Dispose of this document either by shredding or controlled waste receptacles only. This document may not be disposed of via normal trash. When in use, this document must be under your control and care at all times. When not in use, this document must be properly filed and secured.

CONSULTANTS

SPAN CONSTRUCTION & ENGINEERING, INC.
 THE LEADER IN THE STEEL BUILDING INDUSTRY
 WWW.SPANCONSTRUCTION.COM
 3353 YEAGER DRIVE
 MADERA, CA 93637
 559.661.1111

WARE MALCOMB

ARCHITECTURE | CIVIL ENGINEERING
 PLANNING | BRANDING
 INTERIORS | BUILDING MEASUREMENT

4880 CHABOT DRIVE, SUITE 300
 PLEASANTON, CA 94588
 925.244.9620 | WAREMALCOMB.COM

ELEVATED DESIGN INC
 CONSULTING ENGINEERS
 USING LESS ENERGY. BY DESIGN.
 1212 HAWKOCK STREET, SUITE 300
 QUINCY, MA 02269
 P: 724-561-6329

JENSEN HUGHES

FIRE PROTECTION
 117 METRO CENTER BLVD, SUITE 1002
 WARWICK, RI 02886
 401.214.3168 | JENSENHUGHES.COM

Vizion Utility PARTNERS

UTILITY DESIGN AND CONSULTING
 7901 STONERIDGE DRIVE, SUITE 200
 PLEASANTON, CA 94588
 925.682.1114 | VIZIONUTILITY.COM

dialectic ENGINEERING

1100 20th Street, Suite 200
 Pleasanton, CA 94588
 925.682.1114
 Copyright 2022

PROJECT

divert
 INTEGRATED FOOD RECOVERY FACILITY
 4407 WEST MAIN STREET
 TURLOCK, CA 95380

KEY PLAN

REV	DESCRIPTION	DATE
0	ISSUED FOR PERMIT	10/28/2022
1	BULLETIN 2 CORE & SHELL	02/03/2023

SEAL

MECHANICAL

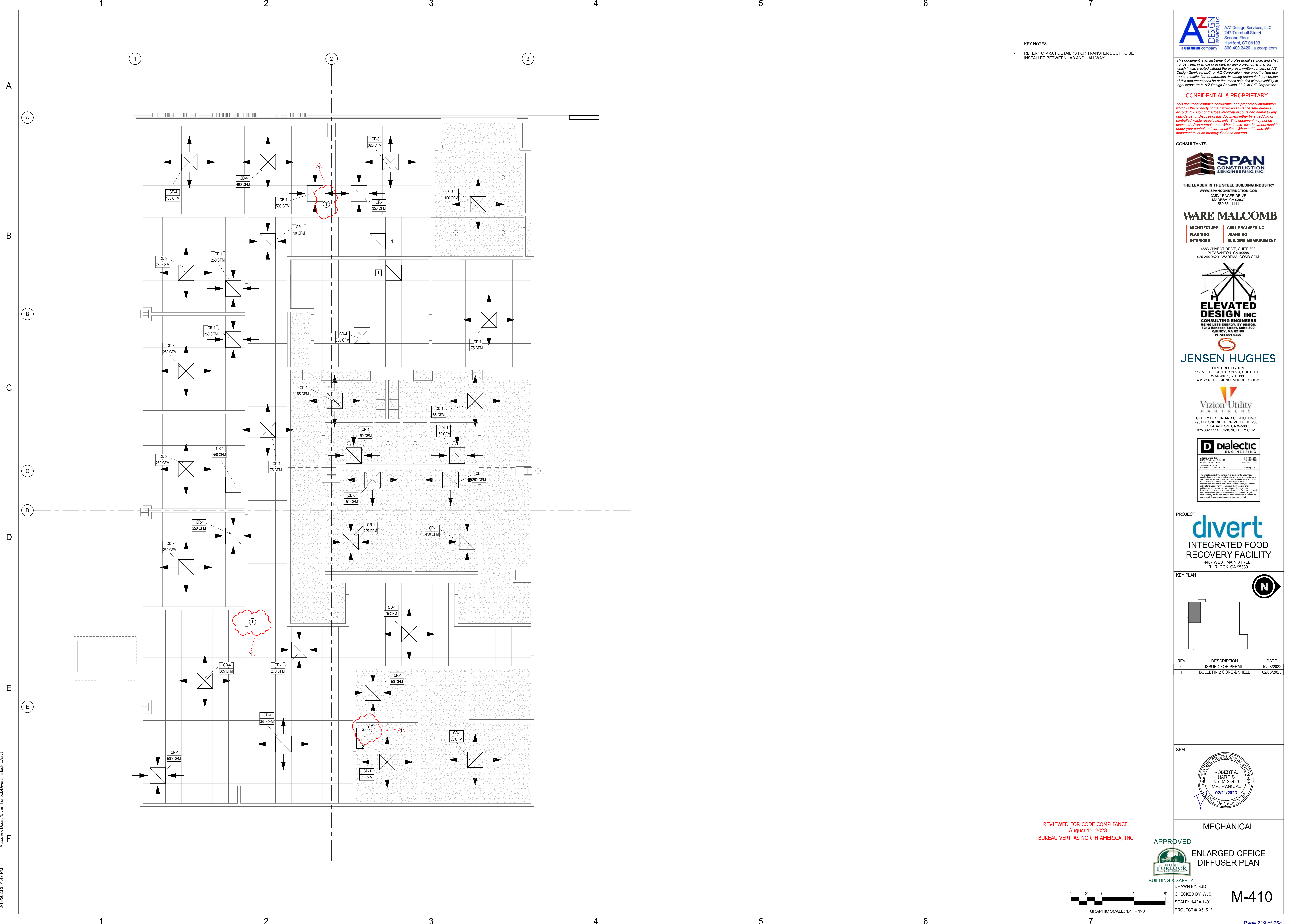
APPROVED
ENLARGED PROCESS AREA D

BUILDING & SAFETY
 DRAWN BY: MJT
 CHECKED BY: WJS
 SCALE: As indicated
 PROJECT #: XB1512



M-404

Autodesk Docs: \\divert-turlock\divert-turlock\CA-1.rvt
 2/13/2023 3:01:42 PM



KEY NOTES:
 1 REFER TO M-501 DETAIL, 13 FOR TRANSFER DUCT TO BE INSTALLED BETWEEN LAB AND HALLWAY.

AZ DESIGN SERVICES, LLC
 242 Trumbull Street
 Second Floor
 Hartford, CT 06103
 800.400.2420 | a-zcorp.com

This document is an instrument of professional service, and shall not be used, in whole or in part, for any project other than that for which it was created without the express, written consent of AZ Design Services, LLC or AZ Corporation. Any unauthorized use, reuse, modification or alteration, including automated conversion of this document shall be at the user's sole risk without liability or legal exposure to AZ Design Services, LLC, or AZ Corporation.

CONFIDENTIAL & PROPRIETARY
 This document contains confidential and proprietary information which is the property of the Owner and must be safeguarded accordingly. Do not disclose information contained herein to any outside party. Dispose of this document either by shredding or controlled waste receptacles only. This document may not be disposed of via normal trash. When in use, this document must be under your control and care at all time. When not in use, this document must be properly filed and secured.

CONSULTANTS

SPAN CONSTRUCTION & ENGINEERING, INC.
 THE LEADER IN THE STEEL BUILDING INDUSTRY
 WWW.SPANCONSTRUCTION.COM
 3353 YEAGER DRIVE
 MADERA, CA 93637
 559.661.1111

WARE MALCOMB

ARCHITECTURE | CIVIL ENGINEERING
 PLANNING | BRANDING
 INTERIORS | BUILDING MEASUREMENT

4883 CHABOT DRIVE, SUITE 300
 PLEASANTON, CA 94588
 925.244.9620 | WAREMALCOMB.COM

ELEVATED DESIGN INC
 CONSULTING ENGINEERS
 USING LESS ENERGY. BY DESIGN.
 1212 Hancock Street, Suite 300
 QUINCY, MA 02269
 P: 724-591-6329

JENSEN HUGHES

FIRE PROTECTION
 117 METRO CENTER BLVD, SUITE 1002
 WARWICK, RI 02886
 401.214.3168 | JENSENHUGHES.COM

Vizion Utility PARTNERS

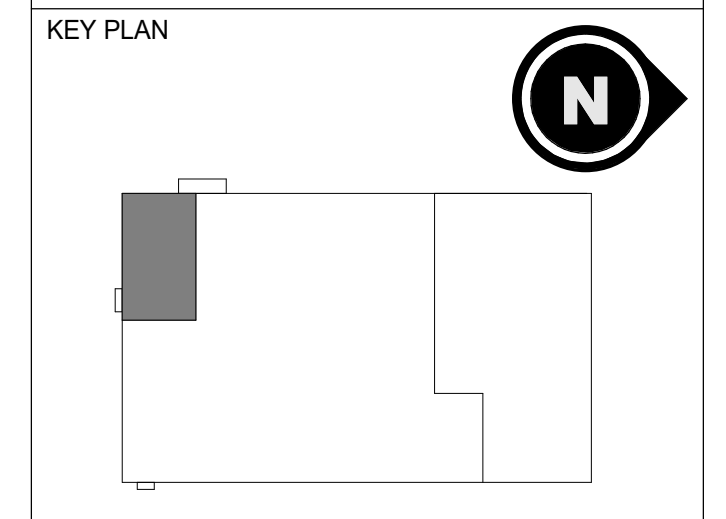
UTILITY DESIGN AND CONSULTING
 7901 STONERIDGE DRIVE, SUITE 200
 PLEASANTON, CA 94588
 925.682.1114 | VIZIONUTILITY.COM

dialectic ENGINEERING

1100 20th Street, Suite 100
 Pleasanton, CA 94588
 925.682.1114
 Copyright © 2022

PROJECT

divert
 INTEGRATED FOOD RECOVERY FACILITY
 4407 WEST MAIN STREET
 TURLOCK, CA 95380



REV	DESCRIPTION	DATE
0	ISSUED FOR PERMIT	10/28/2022
1	BULLETIN 2 CORE & SHELL	02/03/2023

SEAL

MECHANICAL

APPROVED

ENLARGED OFFICE DIFFUSER PLAN

REVIEWED FOR CODE COMPLIANCE
 August 15, 2023
 BUREAU VERITAS NORTH AMERICA, INC.

BUILDING & SAFETY

DRAWN BY: RJD
 CHECKED BY: WJS
 SCALE: 1/4" = 1'-0"
 PROJECT #: X81512

M-410

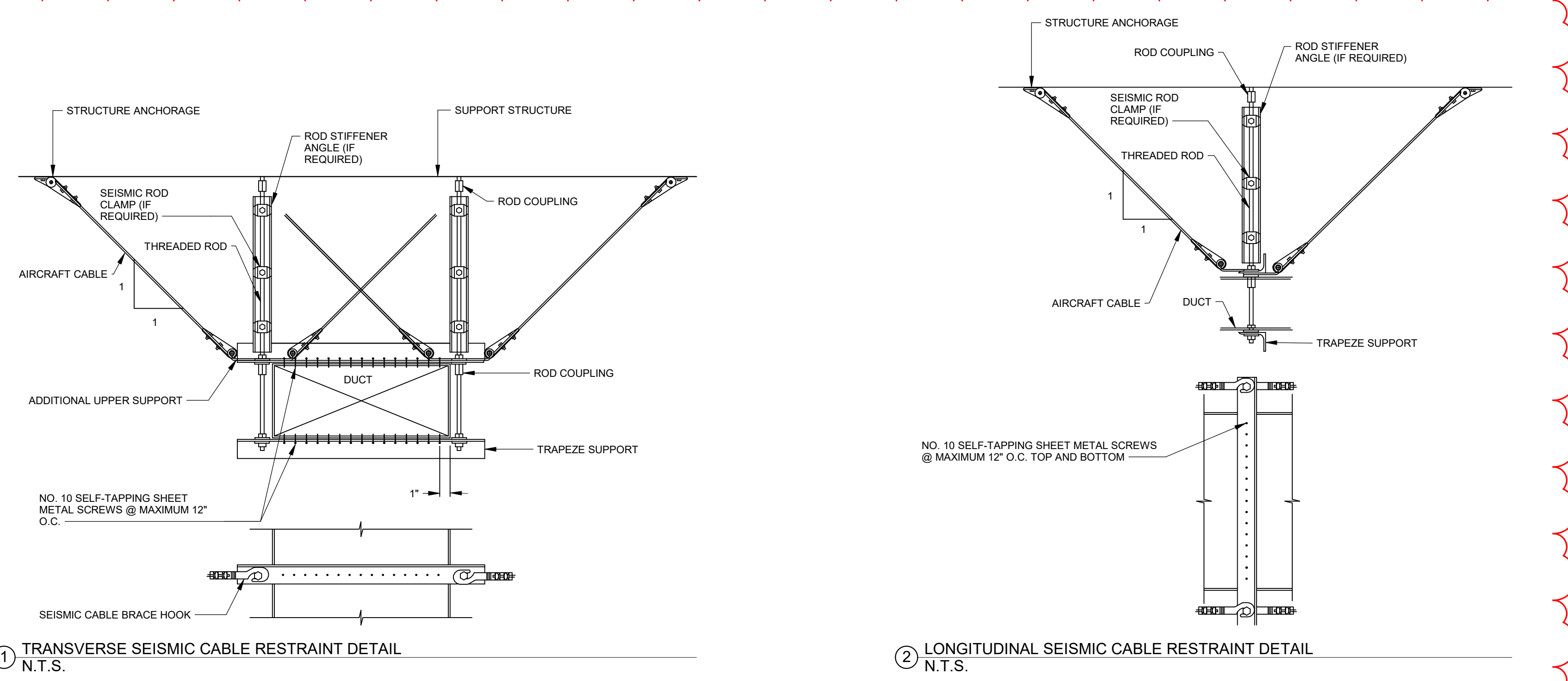
GRAPHIC SCALE: 1/4" = 1'-0"

Page 219 of 254

Autodesk Docs\Divert\Turlock\Divert CA.rvt

2/13/2023 3:01:47 PM

A
B
C
D
E



① TRANSVERSE SEISMIC CABLE RESTRAINT DETAIL
N.T.S.

② LONGITUDINAL SEISMIC CABLE RESTRAINT DETAIL
N.T.S.



AZ Design Services, LLC
242 Trumbull Street
Second Floor
Hartford, CT 06103
800.400.2420 | a-z-corp.com

This document is an instrument of professional service, and shall not be used, in whole or in part, for any project other than that for which it was created without the express written consent of AZ Design Services, LLC or AZ Corporation. Any unauthorized use, reuse, modification or alteration, including automated conversion of this document shall be at the user's sole risk without liability or legal exposure to AZ Design Services, LLC, or AZ Corporation.

CONFIDENTIAL & PROPRIETARY
This document contains confidential and proprietary information which is the property of the Owner and must be safeguarded accordingly. Do not disclose information contained herein to any outside party. Dispose of this document either by shredding or controlled waste receptacles only. This document may not be disposed of via normal trash. When in use, this document must be under your control and care at all time. When not in use, this document must be properly filed and secured.

CONSULTANTS

THE LEADER IN THE STEEL BUILDING INDUSTRY
WWW.SPANCONSTRUCTION.COM
3353 YEAGER DRIVE
MADERA, CA 93637
559.661.1111

WARE MALCOMB

ARCHITECTURE | CIVIL ENGINEERING
PLANNING | BRANDING
INTERIORS | BUILDING MEASUREMENT

4883 CHABOT DRIVE, SUITE 300
PLEASANTON, CA 94588
925.244.9620 | WAREMALCOMB.COM

ELEVATED DESIGN INC
CONSULTING ENGINEERS
USING LESS ENERGY. BY DESIGN.
1212 Hancock Street, Suite 300
QUINCY, MA 02269
P: 724-591-6329

JENSEN HUGHES

FIRE PROTECTION
117 METRO CENTER BLVD, SUITE 1002
WARWICK, RI 02886
401.214.3168 | JENSENHUGHES.COM

Vizion Utility PARTNERS

UTILITY DESIGN AND CONSULTING
7901 STONERIDGE DRIVE, SUITE 200
PLEASANTON, CA 94588
925.682.1114 | VIZIONUTILITY.COM

dialectic ENGINEERING

1100 10th Street, Suite 100
Quincy, MA 02269
724-591-6329

PROJECT

divert
INTEGRATED FOOD RECOVERY FACILITY
4407 WEST MAIN STREET
TURLOCK, CA 95380

KEY PLAN

REV	DESCRIPTION	DATE
0	ISSUED FOR PERMIT	10/28/2022
1	BULLETIN 2 CORE & SHELL	02/03/2023

SEAL



MECHANICAL
DETAILS II

REVIEWED FOR CODE COMPLIANCE
August 15, 2023
BUREAU VERITAS NORTH AMERICA, INC.

APPROVED

BUILDING & SAFETY

DRAWN BY: RJD
CHECKED BY: WJS
SCALE: N.T.S.
PROJECT #: XB1512

M-502

Autodesk Docs | Divert | Turlock | CA.rvt

2/13/2023 3:01:55 PM

TAG	LOCATION	SERVICE	SUPPLY CFM	SUPPLY FAN HP	DRIVE TYPE	ESP (IN W.G.)	OUTDOOR AIR (%)	HEATING				COOLING				ELECTRICAL				PERFORMANCE			SHIPPING WEIGHT (LBS)	BASIS OF DESIGN	NOTES					
								INPUT (MBH)	EFF. (%)	OAT (DEG F)	EAT (DEG F)	LAT (DEG F)	OUTPUT (MBH)	IEER / EER	NOMINAL CAPACITY (TONS)	OAT (DEG F DBWB)	EAT (DEG F DBWB)	LAT (DEG F DBWB)	TOTAL (MBH)	SENSIBLE (MBH)	MCA	MOCOP				V-PH/Hz	EMERGENCY POWER (Y/N)	EER	IEER	HEATING EFFICIENCY (%)
RTU-1	OUTSIDE	OFFICES	4500	3.1	BELT	1.079	20	240/168	81	--	58	96	194.4/136	14.6 / 11.0	10	95	79/62.8	57.51/54.59	115.86	113.78	32 A	40	460/3/60	N	11	14.6	81 / 85	1334	TRANE PRECEDENT YS120A450H	ALL

TAG	LOCATION	SYSTEM	GENERAL		COOLING SEASON			HEATING SEASON			FAN (RPM)	MCA / MOCOP	V/PH/Hz	PRESSURE DROP (IN W.G.)	BASIS OF DESIGN	NOTES
			OUTDOOR AIRFLOW	EXHAUST AIRFLOW	SUPPLY AIRFLOW	RETURN AIRFLOW	OUTDOOR DB/WB (DEG)	SUPPLY DB/WB (DEG)	RETURN DB/WB (DEG)	EXHAUST DB/WB (DEG)						
ERV-1	OUTSIDE	OFFICE	1,070 CFM	1,076 CFM	900 CFM	95/64	79.5/62.8	79/62.5	90.5/63.7	10/10	--	--	--	--	SEMCO UWCH-36	ALL

UNIT NO.	LOCATION	SERVICE	STYLE	CFM	HEIGHT (IN)	WIDTH (IN)	DEPTH (IN)	FREE AREA (SF)	FREE AREA (%)	PRESSURE DROP (IN W.G.)	MAX. FACE VELOCITY (FPM)	NOTES
L-2	PROCESS AREA WALL	MAKE UP	INTAKE AIR LOUVER	20,000	76	174	6	57.7	-	<0.1	350	ALL
L-3	PROCESS AREA WALL	MAKE UP	INTAKE AIR LOUVER	12,000	38	186	6	28.7	-	<0.1	446	ALL
BDD-1	MEZZANINE WALL	MAKE UP	BACKDRAFT DAMPER	2,000	30	30	4	--	-	<0.1	350	--

- NOTES:
1. PROVIDE WITH BIRD SCREEN CONSTRUCTED OF 1/2" GALVANIZED MESH.
2. PROVIDE INTEGRAL COUNTERWEIGHTED BACKDRAFT DAMPER.
3. BASIS OF DESIGN: GREENHECK ESD 635.

UNIT NO.	SERVICE	AIR PATTERN	NECK SIZE	CFM RANGE	FACE MATERIAL	ACCESSORIES	SIMILAR TO	NOTES
CD-2(A)	CEILING SUPPLY	FOUR WAY BLOW	6"Ø	101-200	STEEL (ALUMINUM)	--	PRICE SCD	1, 2, 3, 4
CD-3(A)	CEILING SUPPLY	FOUR WAY BLOW	10"Ø	201-350	STEEL (ALUMINUM)	--	PRICE SCD	1, 2, 3, 4
CD-4(A)	CEILING SUPPLY	FOUR WAY BLOW	12"Ø	351-475	STEEL (ALUMINUM)	--	PRICE SCD	1, 2, 3, 4
CD-5(A)	CEILING SUPPLY	FOUR WAY BLOW	14"Ø	476-650	STEEL (ALUMINUM)	--	PRICE SCD	1, 2, 3, 4
CR-1(A)	EXHAUST/RETURN	--	SEE DRAWINGS	0-1100	STEEL (ALUMINUM)	--	PRICE 80	1, 2, 3, 4

- NOTES:
1. ALL VOLUME DAMPERS SHALL BE LOCATED AT BRANCH RUN-OUTS. DAMPERS LOCATED WITHIN DIFFUSER NECK SHALL NOT BE PERMITTED.
2. COORDINATE FINISHES WITH ARCHITECT.
3. ALL GRILLES TAGGED WITH THE NOTATION "(A)" SHALL BE ALUMINUM.
4. COORDINATE FINAL FRAME SELECTIONS WITH ARCHITECTURAL RCP.

SPLIT SYSTEM (OUTDOOR UNIT)														
TAG	SERVES	LOCATION	COOLING CAPACITY (TONS)	HEATING CAPACITY (BTU/H)	REFRIGERANT	VOLTS	PHASE	HERTZ	MCA	MOCOP	WEIGHT (LBS)	COMPANY RESPONSIBLE	BASIS OF DESIGN	NOTES
AC-CU-1	IT CLOSET	OUTSIDE	1	--	R410A	208	1	60	0.35	15	82	MECHANICAL CONTRACTOR	mitsubishi PUY-A12NH46	ALL
HP-HP-1	ELECTRICAL ROOM	OUTSIDE	12	160,000	R410A	480	3	60	22	35	649	MECHANICAL CONTRACTOR	mitsubishi PLHY-P144TNU-A-(BS)	ALL

- NOTES:
1. PROVIDE FACTORY CONTROLS AND THERMOSTAT.

SPLIT SYSTEM (INDOOR UNIT)														
TAG	SERVES	LOCATION	COOLING CAPACITY (TONS)	HEATING CAPACITY (BTU/H)	REFRIGERANT	VOLTS	PHASE	HERTZ	MCA	MOCOP	WEIGHT (LBS)	COMPANY RESPONSIBLE	BASIS OF DESIGN	NOTES
AC-1	IT CLOSET	IT CLOSET	1	--	R410A	--	--	--	0	--	29	MECHANICAL CONTRACTOR	mitsubishi PKA-A-A12H46	1,2,3
AC-2	ELECTRICAL ROOM	ELECTRICAL ROOM	4	54,000	R410A	208	1	60	1.27	15	55	MECHANICAL CONTRACTOR	mitsubishi PLFY-EP49NEMJL-ER1	1,2

- NOTES:
1. PROVIDE FACTORY CONTROLS AND THERMOSTAT.
2. PROVIDE FACTORY CONDENSATE PUMP.
3. INDOOR UNIT POWERED FROM OUTDOOR UNIT.

FAN TAG	P&ID	LOCATION	PROCESS	FLUID TYPE	FLOW	STATIC PRESSURE (IN. WG.)	RPM	HORSEPOWER	MOTOR				WEIGHT	COMPANY RESPONSIBLE	BASIS OF DESIGN	NOTES	
									MOTOR ENCLOSURE TYPE	MOTOR EFFICIENCY (%)	V/PH/Hz	FLA					
MECHANICAL CONTRACTOR																	
GEF-1	--	ROOF	VENTILATION	AIR	39,000 CFM	0.25	470	15	EXP		460/3/60	21	N	808	MECHANICAL CONTRACTOR	GREENHECK GB-540-150	1,2,3,4,5,6
GEF-2	--	ROOF	VENTILATION	AIR	39,000 CFM	0.25	470	15	EXP		460/3/60	21	N	808	MECHANICAL CONTRACTOR	GREENHECK GB-540-150	1,2,3,4,5,6
GEF-3	--	ROOF	VENTILATION	AIR	39,000 CFM	0.25	470	15	EXP		460/3/60	21	N	808	MECHANICAL CONTRACTOR	GREENHECK GB-540-150	1,2,3,4,5,6
GEF-4	--	ROOF	VENTILATION	AIR	39,000 CFM	0.25	470	15	EXP		460/3/60	21	N	808	MECHANICAL CONTRACTOR	GREENHECK GB-540-150	1,2,3,4,5,6
GEF-5	--	ROOF	VENTILATION	AIR	39,000 CFM	0.25	470	15	EXP		460/3/60	21	N	808	MECHANICAL CONTRACTOR	GREENHECK GB-540-150	1,2,3,4,5,6
GEF-6	--	ROOF	VENTILATION	AIR	39,000 CFM	0.25	470	15	EXP		460/3/60	21	N	808	MECHANICAL CONTRACTOR	GREENHECK GB-540-150	1,2,3,4,5,6
LEF-1	--	ROOF	EXHAUST	AIR	600 CFM	2	2979	0.75			460/3/60		N	292	MECHANICAL CONTRACTOR	GREENHECK VK-H-9-5	1,2,3,4,5,6
TEF-1	--	ROOF	EXHAUST	AIR	1,000 CFM	0.5	1091	0.33	ODP		115/1/60	5.8	N	77	MECHANICAL CONTRACTOR	GREENHECK GB-130-4	1,2,3,4,5,6
WEF-1	--	MEZZANINE WALL	EXHAUST	AIR	3,000	0.15	946	0.25			115/1/60	5.8	N	58	MECHANICAL CONTRACTOR	GREENHECK SBE-1H20	1,2,3,4,5,7

- NOTES:
1. PROVIDE WITH PREMIUM EFFICIENCY MOTOR.
2. PROVIDE WITH NEMA 3 RATED DISCONNECT SWITCH.
3. PROVIDE WITH STARTER.
4. PROVIDE WITH VARIABLE SPEED POTENTIOMETER AS MEANS OF BALANCING.
5. PROVIDE WITH BACKDRAFT DAMPER.
6. PROVIDE WITH ROOF CURB.
7. PROVIDE WITH FACTORY WALL MOUNT KIT AND ESCUTCHEON PLATE.

KEYED NOTES

1. ALL PROCESS PIPING HAS BEEN REMOVED FROM MECHANICAL DRAWINGS AND ISSUED IN A DEDICATED PROCESS PIPING SET.

SERVICE	INSULATION TYPE	MIN THICKNESS	FACING	NOTES
OUTSIDE AIR INTAKE DUCTS, RELIEF PLENUMS, SUPPLY/RETURN AIR DUCTWORK (EXPOSED TO VIEW)	RIGID FIBERGLASS BOARD		ASJ	1
BOXES, SOUND ATTENUATORS, PLENUMS, DIFFUSER PLENUMS, DIFFUSERS, ALL PARTS OF THE SUPPLY SYSTEM (EXCEPT WHERE EXPOSED TO VIEW)	FLEXIBLE FIBERGLASS WITH VAPOR BARRIER	2"	FSK	1
RETURN AIR DUCTWORK IN NON-CONDITIONED SPACES, SUCH AS MECHANICAL ROOMS AND CRAWL SPACES	FLEXIBLE FIBERGLASS WITH VAPOR BARRIER	2"	FSK	1
KITCHEN HOOD EXHAUST DUCTWORK	SUPER FIRETEMP TYPE M (OR EQUIVALENT NFPA-APPROVED SYSTEM)	3"	N/A	-
LOUVER BLANK-OFF PANELS	RIGID FIBERGLASS BOARD	3"	FSK	2
EXPOSED TO VIEW: INTERIOR INSTALLED EXHAUST DUCTWORK WITHIN 15' OF THE POINT OF DISCHARGE THROUGH THE BUILDING EXTERIOR ENVELOPE	RIGID FIBERGLASS BOARD	2"	ASJ	1
CONCEALED: INTERIOR INSTALLED EXHAUST DUCTWORK WITHIN 15' OF THE POINT OF DISCHARGE THROUGH THE BUILDING EXTERIOR ENVELOPE	FLEXIBLE FIBERGLASS WITH VAPOR BARRIER	2"	FSK	1
DUCTWORK: SUPPLY, EXHAUST, RETURN, AND OTHER, WHERE LOCATED OUTSIDE OF THE BUILDING	RIGID FIBERGLASS BOARD	3"	FSK + EPDM ROOFING	2, 3, 4
OTHERS NOT SCHEDULED, WITH SYSTEM TEMPERATURES BELOW 60°F OR ABOVE 90°F.	FLEXIBLE FIBERGLASS WITH VAPOR BARRIER	2"	ASJ	-

- NOTES:
1. THE INSTALLED R-VALUE SHALL BE R-6 OR HIGHER WITHOUT CONSIDERING ANY AIR FILMS. THICKNESS SHALL BE INCREASED AS NECESSARY TO ACHIEVE MINIMUM R-VALUE.
2. THE INSTALLED R-VALUE SHALL BE R-10 OR HIGHER WITHOUT CONSIDERING ANY AIR FILMS. THICKNESS SHALL BE INCREASED AS NECESSARY TO ACHIEVE MINIMUM R-VALUE.
3. DUCTWORK EXPOSED TO WEATHER SHALL BE INSULATED WITH DOUBLE THE INSULATION THICKNESSES SCHEDULED ABOVE, UP TO 24 INCHES AFTER THE POINT WHERE DUCTS ENTER THE BUILDING.
4. EPDM ROOFING SHALL BE 60-MIL.



This document is an instrument of professional service, and shall not be used, in whole or in part, for any project other than that for which it was created without the express written consent of AZ Design Services, LLC or AZ Corporation. Any unauthorized use, reuse, modification or alteration, including automated conversion of this document shall be at the user's sole risk without liability or legal exposure to AZ Design Services, LLC, or AZ Corporation.

CONFIDENTIAL & PROPRIETARY
This document contains confidential and proprietary information which is the property of the Owner and must be safeguarded accordingly. Do not disclose information contained herein to any outside party. Dispose of this document either by shredding or controlled waste receptacles only. This document may not be disposed of via normal trash. When in use, this document must be under your control and care at all times. When not in use, this document must be properly filed and secured.

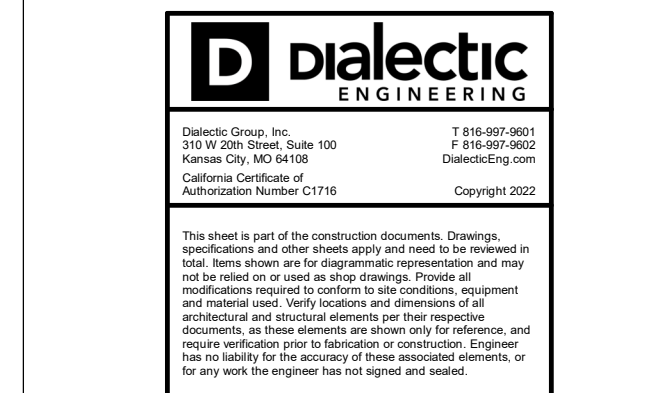


WARE MALCOMB
ARCHITECTURE | CIVIL ENGINEERING
PLANNING | BRANDING
INTERIOR | BUILDING MEASUREMENT



JENSEN HUGHES
FIRE PROTECTION
117 METRO CENTER BLVD, SUITE 1002
WARWICK, RI 02886
401.214.3168 | JENSENHUGHES.COM

Vizion Utility PARTNERS
UTILITY DESIGN AND CONSULTING
7901 STONERIDGE DRIVE, SUITE 200
PLEASANTON, CA 94588
925.682.1114 | VIZIONUTILITY.COM



PROJECT
divert.
INTEGRATED FOOD RECOVERY FACILITY
4407 WEST MAIN STREET
TURLOCK, CA 95380

KEY PLAN

REV	DESCRIPTION	DATE
0	ISSUED FOR PERMIT	10/28/2022
1	BULLETIN 2 CORE & SHELL	02/03/2023
2	BULLETIN 17 - MECHANICAL AND ARCHITECTURAL UPDATES	09/13/2023

SEAL

MECHANICAL
SCHEDULES I

DRAWN BY: MJT
CHECKED BY: WJS
SCALE: N.T.S.
PROJECT #: X81512

M-601

PUMP SCHEDULE table with columns: TAG, EQUIPMENT DESCRIPTION, SERVES, P&ID, PROCESS, LOCATION, FLUID TYPE, FLOW (GPM), HEAD (FT), NSHR (FTWQ), MOTOR ENCLOSURE TYPE, HORSEPOWER, MOTOR EFFICIENCY, V/PHHZ, FLA, VFD, WEIGHT, COMPANY RESPONSIBLE, Manufacturer, NOTES.

- NOTES:
1. PROVIDE WITH DISCONNECT SWITCH
2. PROVIDE WITH TRIPLE DUTY VALVE AND SUCTION DIFFUSER
3. PROVIDE PRESSURE GAUGES AND THERMOMETERS FOR PUMP SUCTION AND DISCHARGE
4. PROVIDE WITH SOFT START

BLOWER AND FAN SCHEDULE table with columns: TAG, EQUIPMENT DESCRIPTION, P&ID, LOCATION, PROCESS, FLUID TYPE, FLOW, STATIC PRESSURE (IN. WG.), DISCHARGE PRESSURE (PSIG), RPM, HORSEPOWER, MOTOR ENCLOSURE TYPE, MOTOR EFFICIENCY (%), V/PHHZ, FLA, VFD (Y/N), WEIGHT, COMPANY RESPONSIBLE, NOTES.

- NOTES:
1. PROVIDE WITH PREMIUM EFFICIENCY MOTOR.
2. PROVIDE WITH NEMA 3 RATED DISCONNECT SWITCH.
3. PROVIDE WITH STARTER.
4. PROVIDE WITH VARIABLE SPEED POTENTIOMETER AS MEANS OF BALANCING.
5. PROVIDE WITH BACKDRAFT DAMPER.
6. PROVIDE WITH ROOF CURB.

TANK SCHEDULE table with columns: TAG, EQUIPMENT DESCRIPTION, P&ID, PROCESS, LOCATION, FLUID TYPE, WEIGHT, VOLUME (GAL), HEIGHT (IN), DIA/WIDTH (IN), LENGTH (IN), COMPANY RESPONSIBLE, NOTES.



This document is an instrument of professional service, and shall not be used, in whole or in part, for any project other than that for which it was created without the express written consent of AZ Design Services, LLC or AZ Corporation. Any unauthorized use, reuse, modification or alteration, including automated conversion of this document shall be at the user's sole risk without liability or legal exposure to AZ Design Services, LLC or AZ Corporation.

CONFIDENTIAL & PROPRIETARY
This document contains confidential and proprietary information which is the property of the Owner and must be safeguarded accordingly. Do not disclose information contained herein to any outside party. Dispose of this document either by shredding or controlled waste recycles only. This document may not be disposed of via normal trash. When in use, this document must be under your control and care at all times. When not in use, this document must be properly filed and secured.

SPAN CONSTRUCTION & ENGINEERING, INC. THE LEADER IN THE STEEL BUILDING INDUSTRY WWW.SPANCONSTRUCTION.COM

WARE MALCOMB ARCHITECTURE PLANNING INTERIORS CIVIL ENGINEERING BRANDING BUILDING MEASUREMENT 4800 CHABOT DRIVE, SUITE 300 PLEASANTON, CA 94588

ELEVATED DESIGN INC CONSULTING ENGINEERS USING LESS ENERGY. BY DESIGN. 1512 HANCOCK STREET, SUITE 300 QUINCY, MA 02169

JENSEN HUGHES FIRE PROTECTION 117 METRO CENTER BLVD, SUITE 1002 WARRICK, RI 02886

Vizion Utility PARTNERS UTILITY DESIGN AND CONSULTING 7901 STONERIDGE DRIVE, SUITE 200 PLEASANTON, CA 94588

PROJECT divert INTEGRATED FOOD RECOVERY FACILITY 4407 WEST MAIN STREET TURLOCK, CA 95380

KEY PLAN table with columns: REV, DESCRIPTION, DATE

MECHANICAL SCHEDULES II

SEAL DRAWN BY: RJD CHECKED BY: WJS SCALE: N.T.S. PROJECT #: X61512 M-602

Autodesk Docs\Divert\Turlock\Divert CA.rvt 10/28/2022 4:44:54 PM