

5200 Buffington Rd.
Atlanta Georgia,
30349-2998

Revisions:
Mark Date By
1 09.22.22
2 PERMIT REVISIONS

Mark Date By
3 10.28.22
PERMIT REVISIONS

Mark Date By
4 01.31.23
ISSUE FOR CONSTRUCTION

Mark Date By
5 02.17.23
IFP-REVISION

STATE OF OHIO
MARK T. KURZYNSKI
#58089
Nashville, Tennessee 37214

Expires: 12/31/23

Kurzynski & Associates
CONSULTING ENGINEERS
2900 Lebanon Pike, Ste. 201
Nashville, Tennessee 37214

Telephone: (615) 255-5203
Fax: (615) 255-5207
Email: mail@kurzynski.com

STORE #02182
BENCHWOOD

3339 BENCHWOOD RD.
DAYTON, OH 45414

SHEET TITLE
MECHANICAL FLOOR PLAN

VERSION: S06C-R
ISSUE DATE: 6.28.2022

Job No.: 20133.CD.R
Store: #2182
Date: 6.28.22
Drawn By: DSF
Checked By: MK

Sheet

MI.I

H.E.S. SYSTEM
MECHANICAL CONTRACTOR TO PROVIDE AND INSTALL SUNCOAST H.E.S. SYSTEM FOR ALL NEW HOODS. SEE HOOD FAN/EQUIPMENT INTERLOCK WIRING DIAGRAM ON SHEET M4.I FOR MORE INFORMATION.

KITCHEN RECIRCULATION NOTE
PER OHIO MECHANICAL CODE 2017, SECTION 403.21, EXCEPTION #3, THE RECIRCULATION OF AIR THAT IS CONTAINED COMPLETELY WITHIN A KITCHEN ZONE SHALL NOT BE PROHIBITED. THE KITCHEN ONLY RECIRCULATES AIR WITHIN ITS ZONE. ALL AREAS OTHER THAN THE KITCHEN ARE FREELY OPEN TO THE KITCHEN AND THE OFFICE OPENS DIRECTLY TO THE KITCHEN.

EXISTING CONDITIONS SHOWN ARE FROM PREVIOUS DRAWINGS. MECHANICAL CONTRACTOR SHALL FIELD VERIFY EXACT LOCATIONS OF ALL DUCT AND DIFFUSERS. IF MAJOR DIFFERENCES OCCUR IN FIELD, CONTACT CHICK-FIL-A CONSTRUCTION MANAGER.

G.C. TO HIRE VENTILATION CLEANING CONTRACTOR CERTIFIED BY NATIONAL AIR DUCT CLEANERS ASSOCIATION (NADCA) TO CLEAN ALL EXISTING DUCTWORK THAT IS TO REMAIN.
PROVIDE INSULATED BACK/BASE FOR TEMP & HUMIDITY SENSORS ON EXTERIOR WALL.

FIELD VERIFY EXISTING AIR DEVICE NECK SIZE PRIOR TO ORDERING REPLACEMENT. TYPICAL

FIELD VERIFY EXISTING AIR DEVICE NECK SIZE PRIOR TO ORDERING REPLACEMENT. TYPICAL

AIR CURTAIN REMOTE WALL SWITCHES BY MECHANICAL REFER TO AIR DOOR SCHEDULE AND AIR CURTAIN WIRING DIAGRAM FOR FURTHER INFORMATION. COORDINATE EXACT LOCATION FOR SWITCHES WITH KITCHEN EQUIPMENT AND PLANS.
NEW AIR CURTAIN, AD#H MOUNTED IN CEILING GRID, CENTERED ON THE DOOR, AT 4" OFF THE EXTERIOR WALL. MECHANICAL CONTRACTOR SHALL ADJUST AIR DEFLECTORS TOWARD AIR DIVERTER BOX.

HOLD DUCT AT ACH#I AS HIGH AS POSSIBLE DUE TO LIMITED CLEARANCE ABOVE CEILING.

MECHANICAL FLOOR PLAN
SCALE: 1/4"=1'-0"

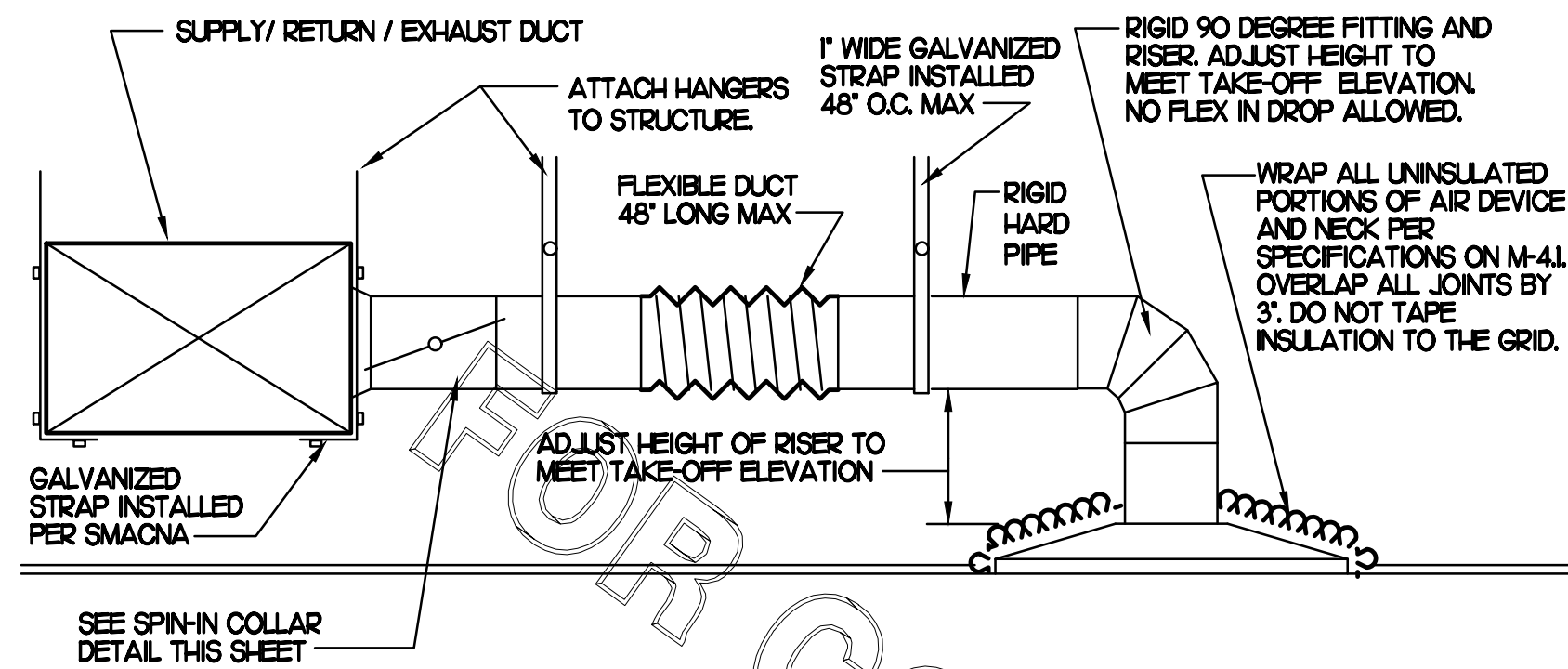
LEGEND table with columns for equipment mark, description, and key note reference.

TOTAL AIR BALANCE SCHEDULE table with columns for equipment mark, AC#1-5, EF#1-3, and total values.

SHEET NOTES 1-5 detailing duct sizes, air curtain mounting, hardpipe usage, coordination with existing conditions, and HVAC balancing requirements.

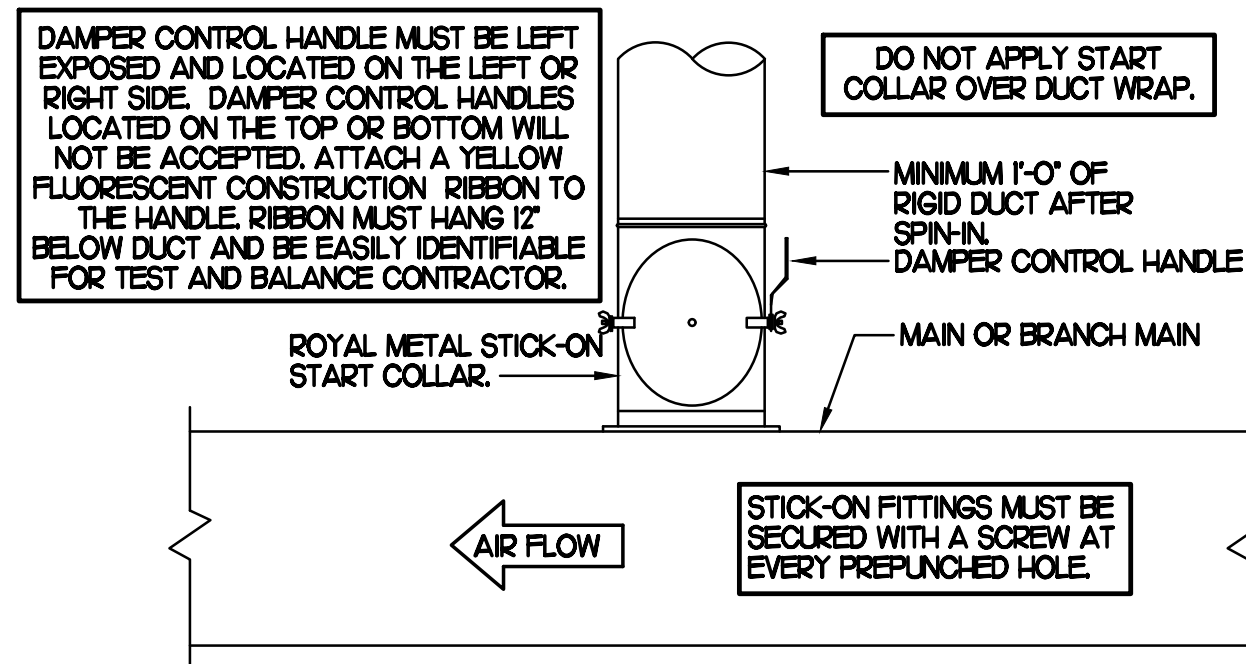
KEY NOTES (THIS SHEET ONLY)

- 1 CONNECT NEW AIR DEVICE TO EXISTING TAKE-OFF...
2 AIR CURTAIN MOUNTED OVER DOOR HEADER...
3 BRANCH TAKE-OFFS SHALL NOT BE LOCATED CLOSER THAN 3'-0" FROM ANY ELBOW...
4 TRANSITION IN VERTICAL DROP FROM FULL SIZE OF CURB OPENING...
5 TRANSITION IN VERTICAL DROP FROM FULL SIZE OF CURB OPENING...
6 HALTON MED DAMPER AT HOOD COLLAR...
7 MECHANICAL CONTRACTOR TO ADJUST PATTERN DEFLECTORS...
8 GREASE DUCT UP THRU ROOF FROM FULL SIZE OF MED COLLAR...
9 MOUNT NEW SMOKE DETECTOR TEST/RESET STATIONS...
10 ROUTE DUCT BETWEEN WALL STUDS ABOVE CEILING...
11 ANSLL UTILITY CABINET...
12 PROVIDE & INSTALL NEW SPIN-IN COLLAR...
13 RUSKIN MODEL MDRS25 OR EQUIVALENT...
14 GC TO CONFIRM EXACT LOCATION OF ACH#3...
15 MOUNT AIR HANDLER ON OVER-HEAD WALL ABOVE CASED OPENING...
16 ROUTE CONDENSATE ABOVE CEILING FROM AH#H...
17 MOUNT AH#H THERMOSTAT ON WALL NEXT TO AD#H...
18 ELECTRICAL CONTRACTOR TO PURCHASE AND INSTALL NEW CFA T500...
19 YOUNG REGULATOR 1/2" MODEL 2010...
20 PROVIDE 120V/24V 50 VA TRANSFORMER...
21 MOUNT NEW REMOTE TEMP SENSOR AND NEW LENOX HUMIDITY SENSOR...

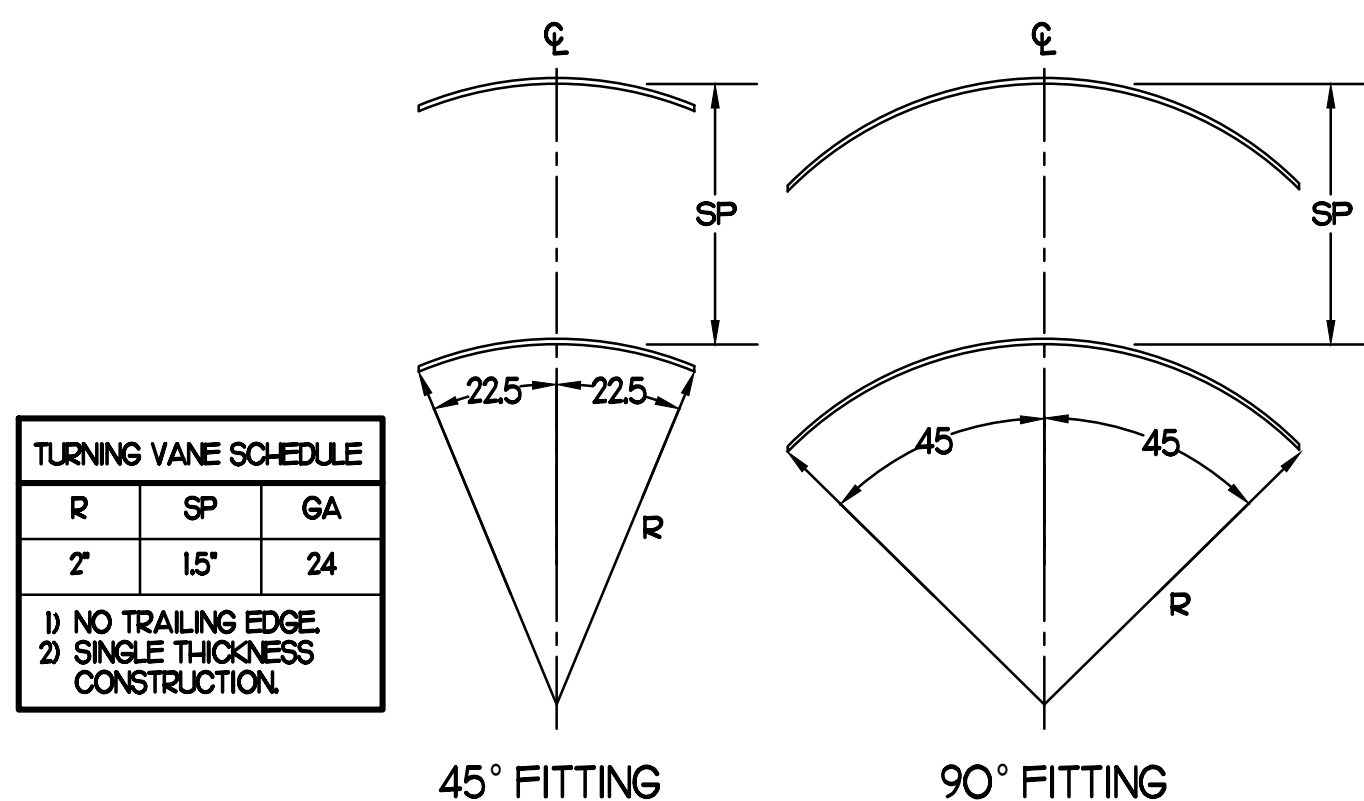


1 SAG/RAG/GRILLE TAKE-OFF
NO SCALE

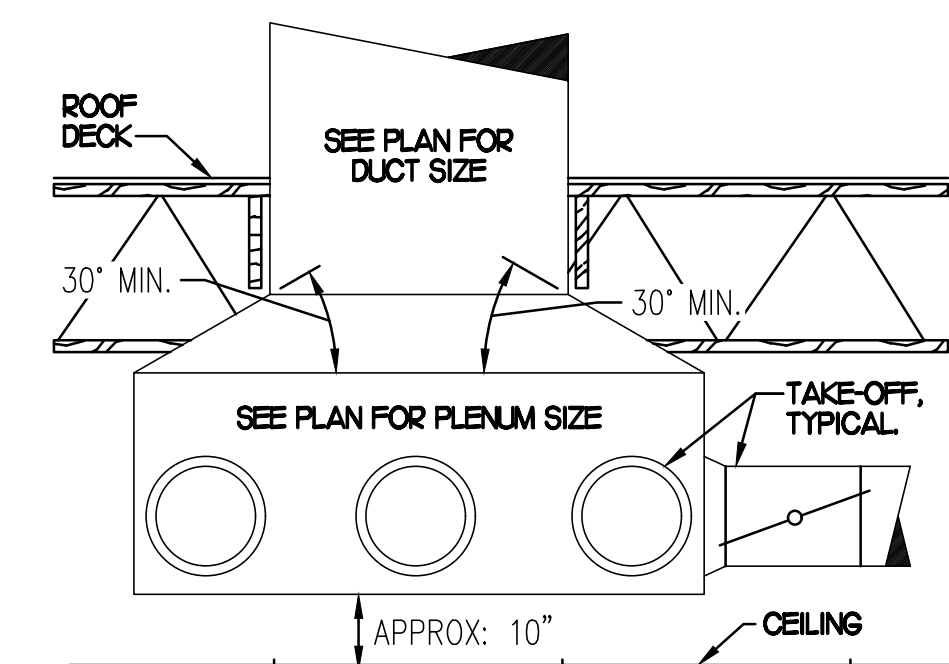
CHICK-FIL-A HAS A NATIONAL ACCOUNT WITH TOM BARROW COMPANY FOR THE ROYAL METAL START COLLARS. THE MECHANICAL CONTRACTOR IS REQUIRED TO PURCHASE THE ROYAL METAL START COLLARS DIRECTLY FROM TOM BARROW COMPANY. CONTACT MR. SCOTT GEORGE AT 404-351-1010 FOR PRICING AND AVAILABILITY. ROYAL METAL START COLLARS NOT PURCHASED THRU TOM BARROW COMPANY WILL NOT BE ACCEPTED.



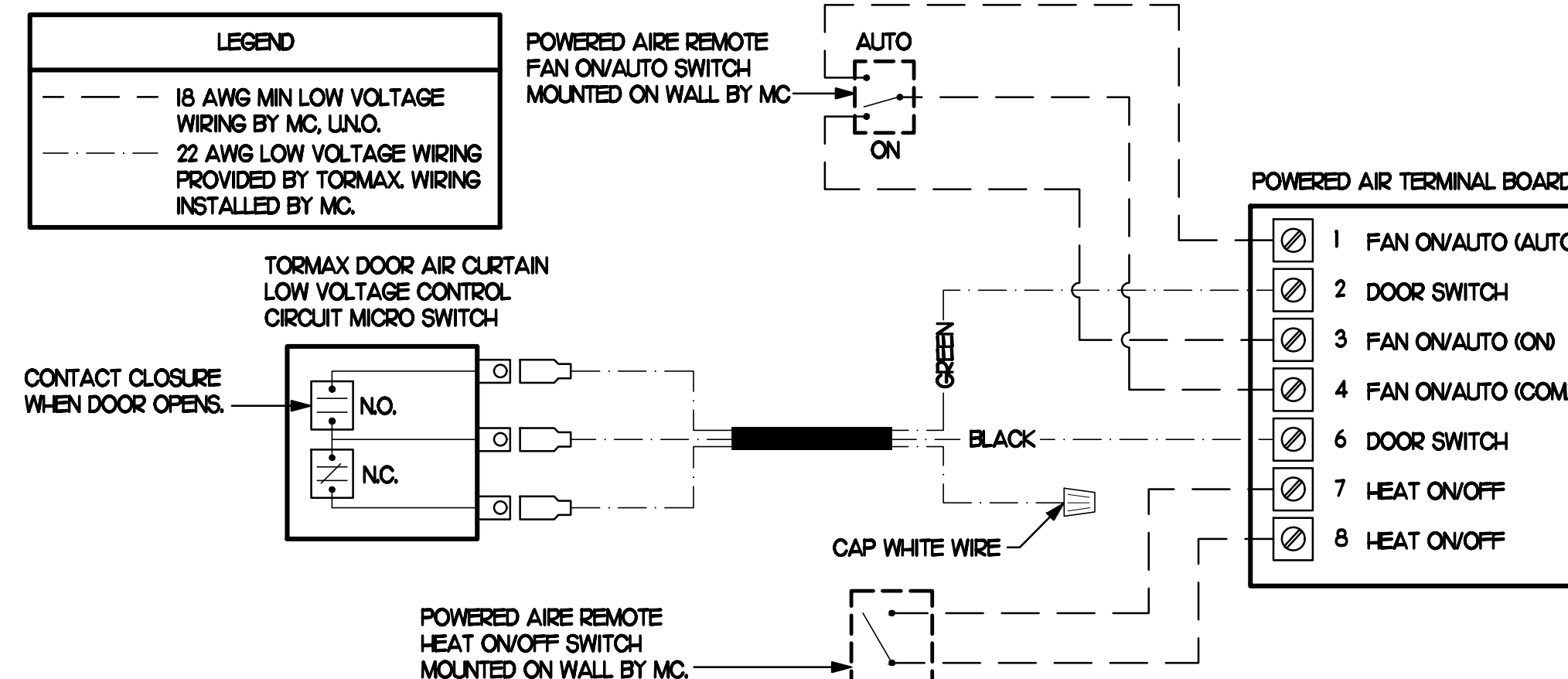
2 START COLLAR
NO SCALE



3 TURNING VANES
NO SCALE



5 RETURN DROP GEOMETRY
NO SCALE



4 AIR CURTAIN WIRING DIAGRAM
NO SCALE

AIR DOOR SCHEDULE

MARK	CFM	VELOCITY	HEATING CAP	HP	AREA SERVED	MODEL	MANUFACTURER	REMARKS
AD#1 (NEW)	1543	2338	10 KW	3/4	DRIVE THRU	CHA-48B2	POWERED-AIRE	2-5
AD#2 (NEW)	3,867	4,220	NA	3/4	REAR DOOR	RBT-148	POWERED-AIRE	1
AD#3 (NEW)	2,899	4,220	NA	3/4	DRIVE THRU DOOR	RBT-136	POWERED-AIRE	1

NOTES:
• CHICK-FIL-A HAS A NATIONAL ACCOUNT WITH TOM BARROW COMPANY FOR THE AIR DOORS. THE MECHANICAL CONTRACTOR SHALL PURCHASE THE AIR DOORS DIRECTLY FROM TOM BARROW COMPANY. CONTACT MR. SCOTT GEORGE AT 404-351-1010 FOR PRICING AND AVAILABILITY. AIR DOORS NOT PURCHASED THRU TOM BARROW COMPANY WILL NOT BE ACCEPTED.

REMARKS:
1. FACTORY PROVIDED MAGNETIC DOOR CONTACT WITH FACTORY INSTALLED LOW VOLTAGE CONTROLS LOCATED IN AIR DOOR CABINET.
2. FACTORY PROVIDED, WIRED, AND UNIT MOUNTED SPEED CONTROLLER LOCATED ABOVE CEILING.
3. FACTORY WIRED DISCONNECT.
4. FACTORY PROVIDED, FIELD INSTALLED REMOTE WALL SWITCHES FOR HEATING ON/OFF AND FAN ON/AUTO SWITCH. SEE AIR CURTAIN WIRING DIAGRAM DETAIL THIS SHEET.
5. PROVIDE WITH DIVERTER BOX FROM TOM BARROW COMPANY. PROVIDE WITH MOUNTING BRACKETS PER MANUFACTURER'S RECOMMENDATIONS. INSTALL PER MANUFACTURER'S MOUNTING INSTRUCTIONS.

AIR DEVICE SCHEDULE

MARK	DESCRIPTION	LOCATION	NECK SIZE	FACE SIZE	FRAME TYPE	REMARKS
A	PRICE MODEL APDC ALUMINUM SUPPLY AIR DIFFUSER WITH INDIVIDUALLY ADJUSTABLE CURVED AIR PATTERN CONTROLLERS.	DINING AREA KITCHEN	SEE PLAN	24X24	LAY-IN	17
C	PRICE MODEL SMCD STEEL SUPPLY AIR DIFFUSER FIELD ADJUSTABLE AIR PATTERN CONTROLLERS.	ENTRYS	14X14	20X20	BEVELLED	13,5,6
F	PRICE MODEL 80 EGGRATE RETURN AIR GRILLE WITH REMOVABLE WHITE CORE, FACTORY FLAT BLACK BACKPAN AND ROUND NECK.	DINING KITCHEN	SEE PLAN	24X24	LAY-IN	17
J	PRICE MODEL SMCD STEEL SUPPLY AIR DIFFUSER FIELD ADJUSTABLE AIR PATTERN CONTROLLERS.	RESTROOMS	10X10	16X16	BEVELLED	12,3,5,6
K	PRICE MODEL APDR ALUMINUM PERFORATED FACE RETURN AIR GRILLE.	RESTROOMS ENTRYS	14X14	17X17	SURFACE	14,5,6

NOTES:
• MECHANICAL CONTRACTOR SHALL PURCHASE THE AIR DEVICES DIRECTLY FROM TOM BARROW COMPANY. CONTACT MR. SCOTT GEORGE AT 404-351-1010 FOR PRICING AND AVAILABILITY. AIR DEVICES NOT PURCHASED THRU TOM BARROW COMPANY WILL NOT BE ACCEPTED.

REMARKS:
1. STANDARD OFF WHITE FINISH.
2. PROVIDE MODEL VCS3 NECK DAMPER.
3. SEE DRAWING M1 FOR THROW.
4. PROVIDE MODEL VCR7 NECK DAMPER ON GRILLES IN RESTROOMS.
5. PROVIDE BACKPAN MC TO SEAL JOINTS WITH MASTIC AND INSULATE EXTERNALLY.
6. FIELD INSULATE BACKPAN AS SHOWN ON DETAIL 1/MS.1.
7. FACTORY INSULATED R-6 BACKPAN.

GAS FIRED ROOFTOP UNIT SCHEDULE

MARK	COOLING CAPACITY (MBH)		HEATING CAPACITY (MBH)		FAN SECTION (CFM)	MODEL	MANUFACTURER	REMARKS				
	TOTAL	SENS	INPUT	OUTPUT								
ACH1 (NEW)	2825	205.3	480.0	384.0	2	8500	2000	75	10	LGH-300S4B	LENNOX	H217-H
ACH2 (NEW)	100.3	70.2	240.0	192.0	2	2830	750	20	0.75	LGH-4024B	LENNOX	12,4-14,17-H
ACH3 (NEW)	1244	89.6	240.0	192.0	2	4,000	1,000	30	0.75	LGH-4204B	LENNOX	12,4-14,17-H
ACH4 (NEW)	914	64.9	240.0	192.0	2	2,765	600	20	0.75	LGH-0924B	LENNOX	12,4-14,17-H
ACH5 (NEW)	617	43.8	150.0	120.0	2	1,800	300	10	0.75	LGH-0604E	LENNOX	12,4-14,17-H

NOTES:
• COOLING CAPACITIES ARE GROSS, BASED ON INDOOR EDB 80F, INDOOR EWB 67F, OUTDOOR EDB 95F.
• FOR PROPER BUILDING AIR BALANCE, VERIFY AMOUNT OF OUTSIDE AIR PROVIDED BY ALL EXISTING UNITS. ADJUST AS PER SCHEDULE IF NECESSARY.
• VERIFY MIN. 10' DISTANCE OF O.A. INTAKE OPENINGS OF A/C UNITS FROM ANY EXISTING SOURCE OF AIR POLLUTION (EXHAUST FAN, COMBUSTION FLUE, VENT ETC). IF SUCH CONDITIONS EXIST, CONTRACTOR IS REQUIRED TO DUCT OUTSIDE AIR INTAKE ON ROOF AWAY FROM ANY SUCH SOURCE.

REMARKS:
1. PROVIDE DIFFERENTIAL ENTHALPY ECONOMIZER WITH POWER EXHAUST. ECONOMIZER TO BE LOW LEAKAGE/HIGH PERFORMANCE.
2. SEE DETAIL 2/M4.1 FOR SETTING OF PRODIGY M3 BOARD CONTROL PARAMETERS BY MC.
3. PROVIDE FACTORY INSTALLED AND UNIT POWERED 115V GFI SERVICE OUTLET.
4. PROVIDE FACTORY INSTALLED RETURN SIDE SMOKE DETECTOR.
5. PROVIDE FACTORY INSTALLED NON-FUSED DISCONNECT.
6. PROVIDE 2" MERV 5 THROW AWAY FILTERS.
7. PROVIDE HINGED PANELS FOR FILTER ACCESS, FAN MOTOR ACCESS, COMPRESSOR ACCESS AND CONTROL COMPARTMENT ACCESS.
8. ADJUST GAS MANIFOLD PRESSURE AT LOCATIONS WHERE ELEVATION EXCEEDS 2000' ABOVE SEA LEVEL AS RECOMMENDED BY MANUFACTURER.
9. PROVIDE FACTORY COIL HAIL GUARD, FIELD INSTALLED.
10. PROVIDE HUMIDITROL OPTION WITH FACTORY WALL MOUNTED HUMIDITY SENSOR.
11. PROVIDE WITH FACTORY CONDENSATE DRAIN PAN OVERFLOW SWITCH.
12. PROVIDE FACTORY INSTALLED BELT TENSIONER.
13. PROVIDE WITH FACTORY RETURN AIR ADAPTER PLATE.
14. PROVIDE WITH FACTORY INSTALLED 115V GFI SERVICE OUTLET.
15. PROVIDE WITH ADAPTER CURB. UNIT BEING REPLACED IS LENNOX MODEL LGA0604. ADAPTER CURB IS PROVIDED BY LENNOX AS PART OF THE TOTAL EQUIPMENT PACKAGE.
16. PROVIDE WITH MS4V BLOWER.
17. PROVIDE FACTORY CONDENSER PHASE LOSS PROTECTION.
18. PROVIDE FACTORY FRESH AIR TEMPERING KIT.

EXHAUST FAN SCHEDULE

MARK	CFM	ESP	RPM	TP SPEED (FPM)	HP (WATTS)	AREA SERVED	MODEL	MANUFACTURER	REMARKS
EF#1 (NEW)	1915	0.75	1,331	5,226	3/4	HOOD#1 & HOOD#R	150 CPS	LOREN COOK	H2
EF#2 (NEW)	1,402	0.95	1,199	4,708	3/4	HOOD#2 & HOOD#3	150 CPS	LOREN COOK	H2
EF#3 (EXIST)	400	-	-	-	-	RESTROOMS	-	EXISTING	-

NOTES:
• GREASE EXHAUST FAN RPM BASED ON 80 DEGREE F AIR AT 1000 FEET ABOVE SEA LEVEL.
• GREASE EXHAUST FANS TO BE UL 762 LISTED.
• CHICK-FIL-A HAS A NATIONAL ACCOUNT WITH TOM BARROW COMPANY FOR FAN/CURB PACKAGE. MECHANICAL CONTRACTOR IS REQUIRED TO PURCHASE THE FAN/CURB PACKAGE DIRECTLY FROM TOM BARROW COMPANY. CONTACT MR. SCOTT GEORGE AT 404-351-1010 FOR PRICING AND AVAILABILITY. FANS AND CURBS NOT PURCHASED THRU TOM BARROW COMPANY WILL NOT BE ACCEPTED.

REMARKS:
1. PROVIDE AND INSTALL ROOFTOP SOLUTIONS G2 DRIP GUARD. MC. TO CONTACT ROOFTOP SOLUTIONS AT 800-913-7034.
2. PROVIDE FACTORY INSTALLED, PRE-WIRED, NEMA 3 NON-FUSED DISCONNECT. COORDINATE WITH E.C.
3. INTEGRAL THERMAL OVERLOAD WITH AUTOMATIC RESET.
4. UPBLAST, ARRANGEMENT 10, C/W ROTATION. SEE PLANS TO CONFIRM CONFIGURATION.
5. PROVIDE FACTORY STEEL FAN WHEEL.
6. PROVIDE FACTORY STEEL INLET FLANGE AND INLET COMPANION FLANGE.
7. PROVIDE FACTORY WEATHER HOUSING W/ HINGED ACCESS DOOR.
8. PROVIDE FACTORY DRAIN CONNECTION.
9. PROVIDE FACTORY BOLTED ACCESS DOOR ON SCROLL.
10. PROVIDE FACTORY STEEL OUTLET COMPANION FLANGE.
11. UTILITY SET FAN CURB AND ASSOCIATED EXHAUST DUCT CURB PROVIDED BY TOM BARROW COMPANY.
12. PROVIDE FACTORY BELT DRIVE WITH ADJUSTABLE MOTOR SHEAVE AND SPARE BELT.

DUCTLESS SPLIT SYSTEM HEAT PUMP UNIT SCHEDULE

MARK	COOLING CAPACITY (MBH)		HEATING CAPACITY (MBH)		EFFICIENCIES		FAN SECTION (CFM)	ELECTRICAL DATA			R-410A MODEL	MFR	
	MIN	MAX	MIN	MAX	SEER	HSPF		AHU	MOOP	VOLTAGE			
AH1/CH1 (NEW)	18.0	33.5	18.0	40.0	16.2	10.0	635-790-830T	28	40	208V/60	PKA-A36KAT	PLZ-HA36N4A5	MTSLBISHI

NOTES:
• MECHANICAL CONTRACTOR SHALL PURCHASE THE SPLIT SYSTEM HEAT PUMP DIRECTLY FROM TRANSMITSUBISHI. CONTACT MS. LAURI FRANKOWSKI AT 630-400-4285, FOR PRICING AND AVAILABILITY.

REMARKS:
1. ELECTRICIAN TO PROVIDE NON-FUSED DISCONNECT.
2. MECHANICAL TO PROVIDE AND INSTALL REFRIGERANT PIPING AS PER MFR RECOMMENDATIONS.
3. PROVIDE ENGRAVED PLASTIC LABEL AT AHU AND CU WITH HIGH WHITE LETTERS ON A BLACK BACKGROUND RIVETED TO UNIT CABINET.
4. PROVIDE WITH ADEQUATE REFRIGERANT LINE SET. FIELD VERIFY DISTANCE FROM WHERE CONDENSER IS TO BE SET TO AIR HANDLER LOCATION PRIOR TO ORDERING.
5. PROVIDE WITH WALL MOUNTED THERMOSTAT (TAR-C10MALU-SB). USE TWO-WIRE, STANDARD, NON-POLAR CONTROL WIRE TO CONNECTOR TB15 ON INDOOR UNIT CONTROLLER. PROGRAM THERMOSTAT CONTROLS TO MATCH DRIVE-THRU RTU SETPOINTS.
6. PROVIDE PAC-SES5RA-E CONNECTOR AT INDOOR UNIT (CONNECTOR ON32), WIRE ORANGE AND RED WIRES TO SPARE POLE ON RELAY R-1 IN SUNCOAST T-500 PANEL (TERMINALS 11 AND 7 RESPECTIVELY) AND CAP THE BROWN WIRE.
7. PROVIDE WITH CONDENSATE PUMP (BLUE DIAMOND MAXI BLUE MODEL# X87-721).



Chick-fil-A

5200 Buffington Rd.
Atlanta Georgia,
30349-2998

Revisions:
Mark Date By
1 09.22.22
2 PERMIT REVISIONS

Mark Date By
3 10.28.22
PERMIT REVISIONS

Mark Date By
4 01.31.23
ISSUE FOR CONSTRUCTION

Mark Date By
5 02.17.23
IFP-REVISION



Kurzynske & Associates
CONSULTING ENGINEERS
2900 Lebanon Pike, Ste. 201
Nashville, Tennessee 37214
Telephone: (615) 255-5203
Fax: (615) 255-5207
Email: mail@kurzynske.com

STORE #02182
BENCHWOOD

3339 BENCHWOOD RD.
DAYTON, OH 45414

SHEET TITLE
HVAC DETAILS
& SCHEDULES

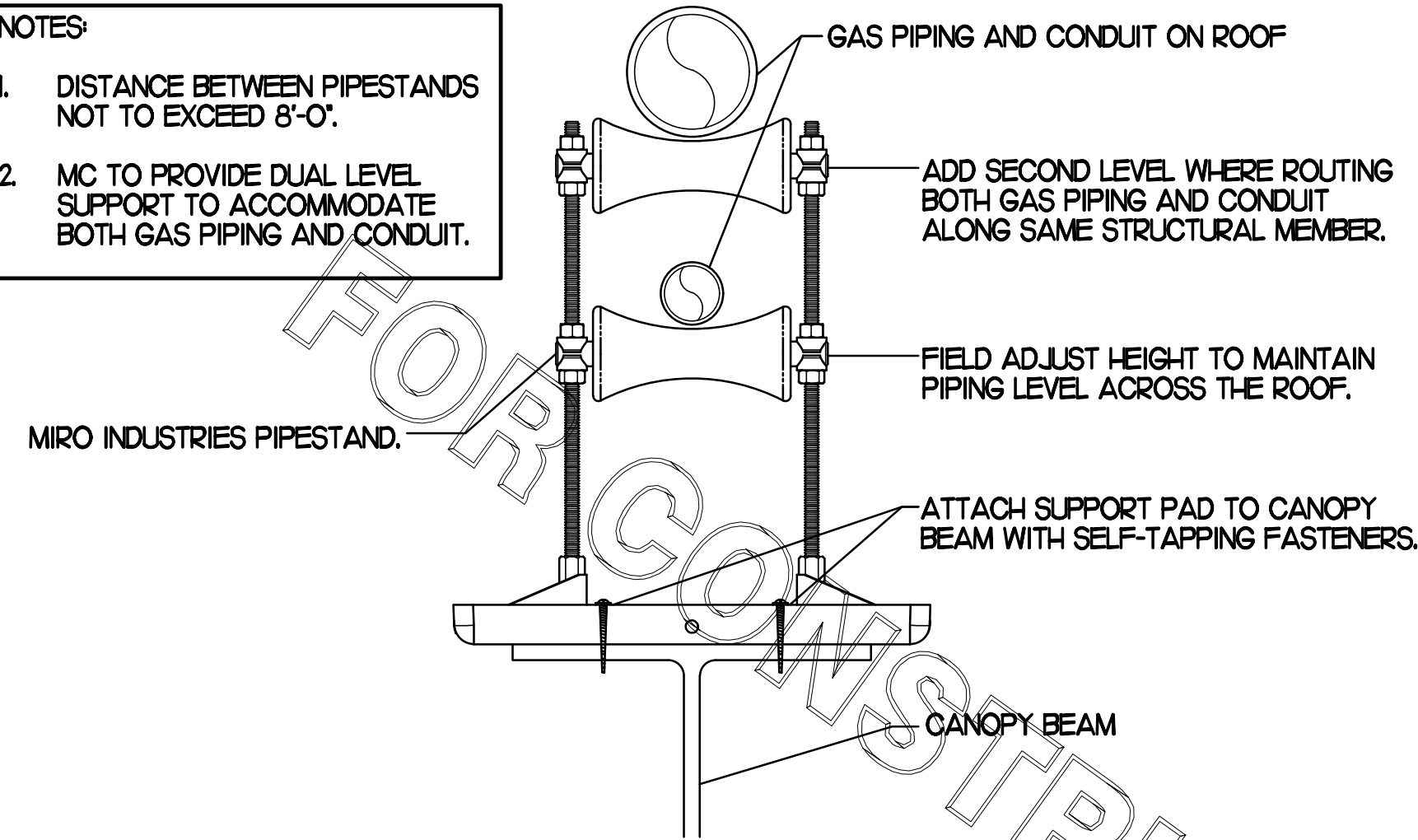
VERSION: S06C-R
ISSUE DATE: 6.28.2022

Job No. : 20133.CD.R
Store : #2182
Date : 6.28.22
Drawn By : DSF
Checked By : MK

Sheet

M3.I

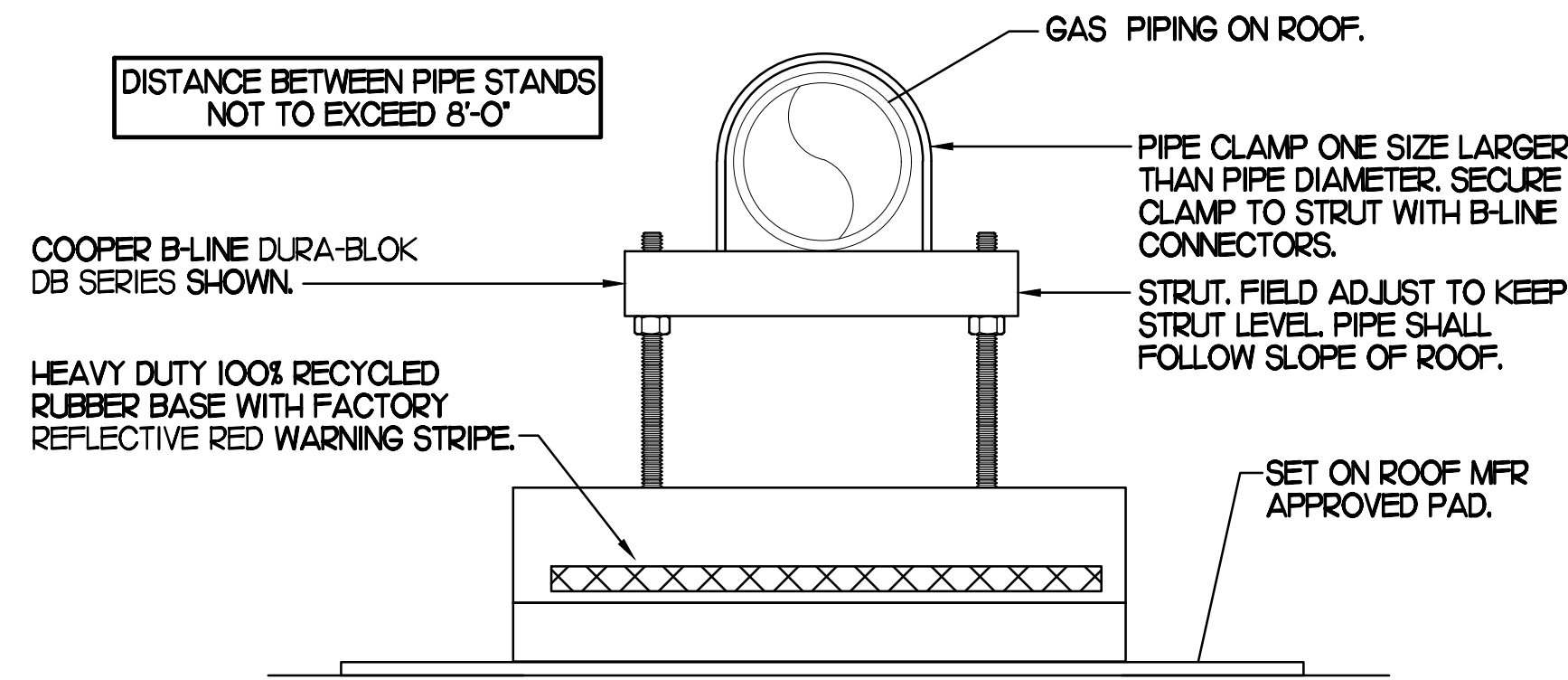
- NOTES:
1. DISTANCE BETWEEN PIPESTANDS NOT TO EXCEED 8'-0".
 2. MC TO PROVIDE DUAL LEVEL SUPPORT TO ACCOMMODATE BOTH GAS PIPING AND CONDUIT.



1 PIPING SUPPORT ON CANOPY

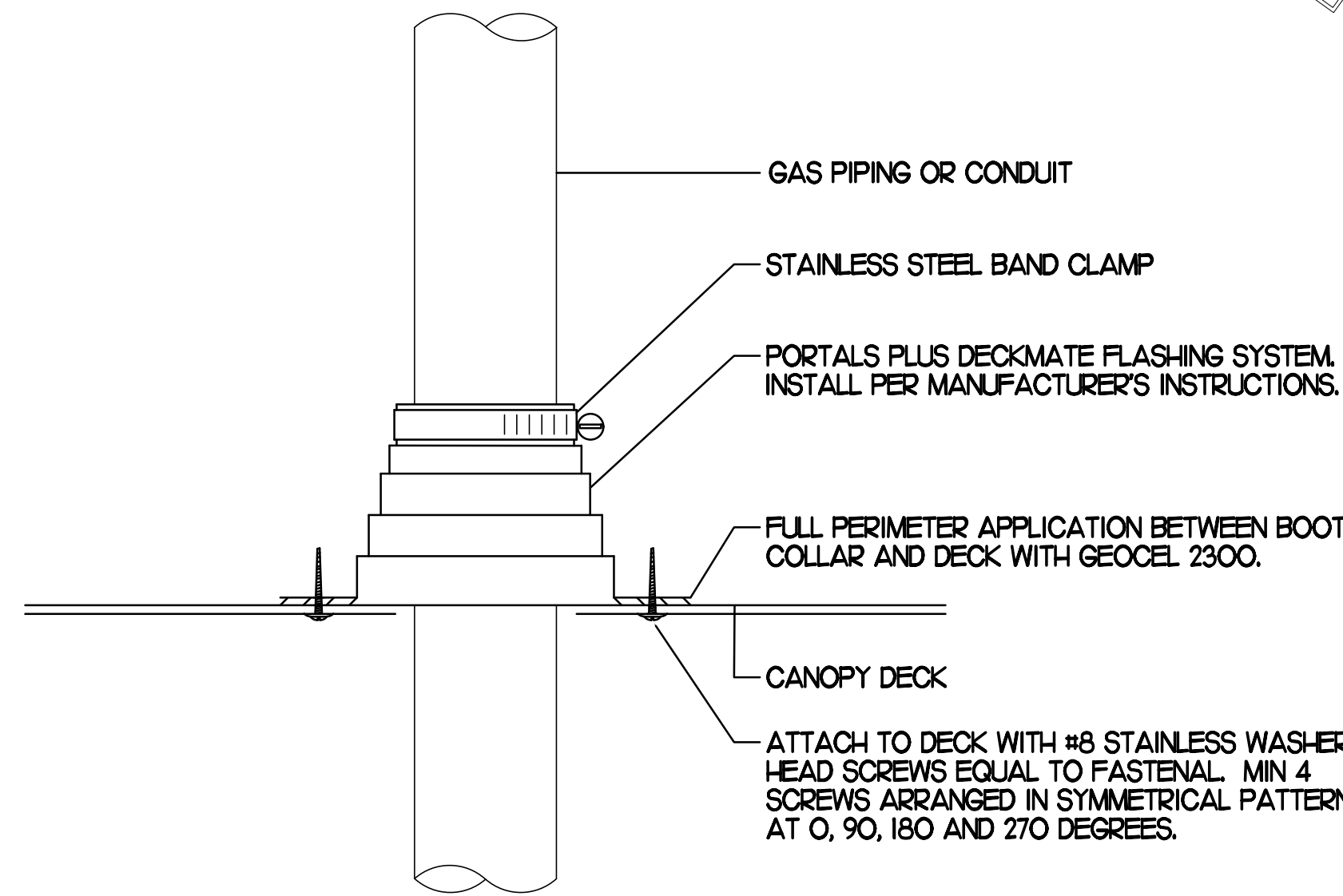
NO SCALE

- NOTES:
1. NON ADJUSTABLE MODEL DB610 PIPE STAND TO BE USED FOR NON-ELEVATED PIPING INSTALLED FLAT ON ROOF DECK.
 2. PROVIDE MODEL DBE 10-8 OR DBE 10-12 OR DBE 10-16 AS NEEDED FOR ELEVATING PIPING FOR GAS PIPING CROSSING OVER CONDENSATE PIPING.
 3. ENSURE GAS PIPING DOES NOT OBSTRUCT ROOFTOP EQUIPMENT ACCESS OPENINGS. RE-PIPING OF SYSTEMS DUE TO CONFLICTS WITH EQUIPMENT ACCESS OPENINGS SHALL BE DONE AT PLUMBING CONTRACTOR'S EXPENSE.



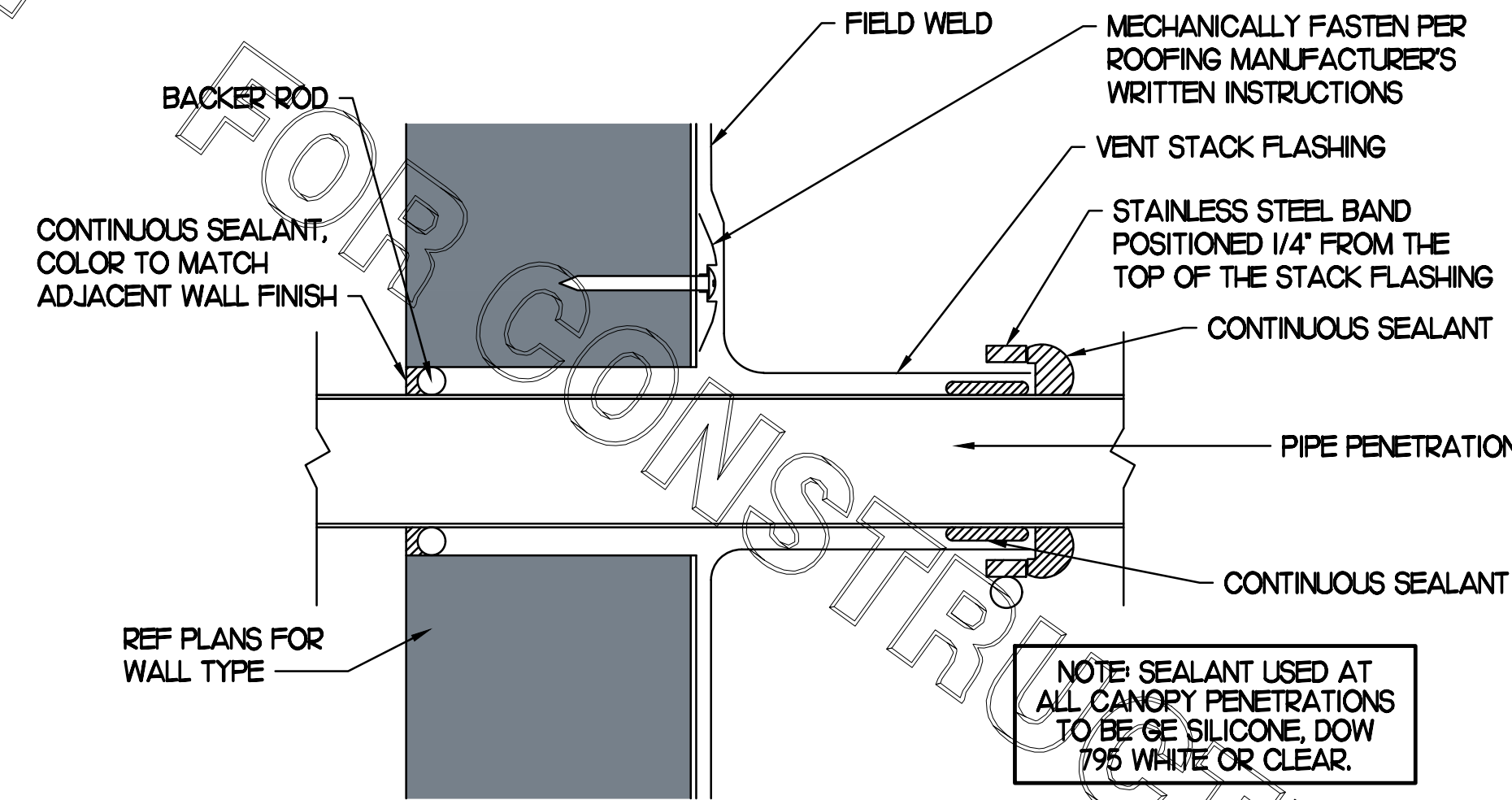
2 PIPING SUPPORT ON MAIN BLDG ROOF

NO SCALE



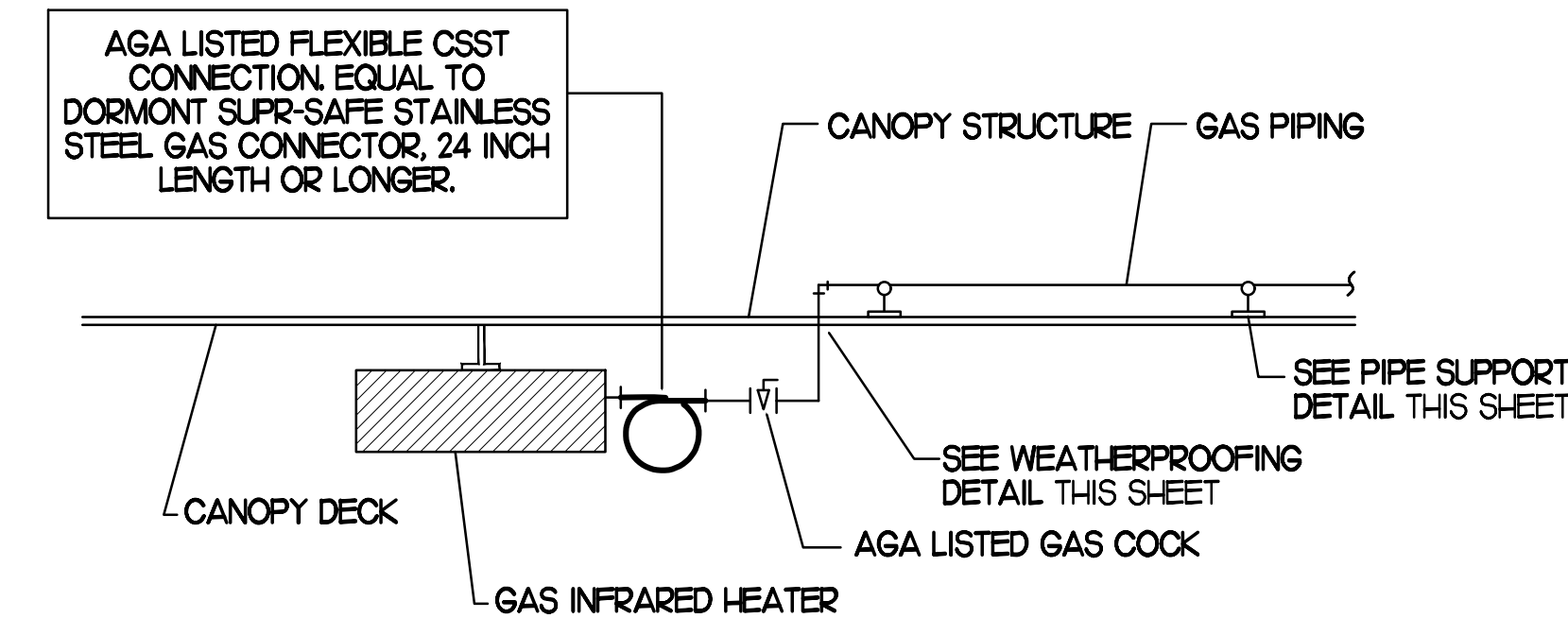
3 WEATHERPROOFING AT CANOPY PENETRATION

NO SCALE



4 PARAPET PENETRATION DETAIL

NO SCALE



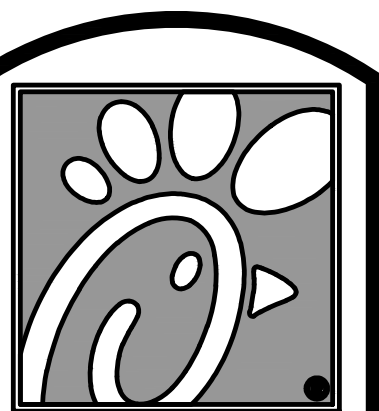
5 GAS CONNECTION AT APPLIANCE

NO SCALE

BROMIC ELECTRIC HEATER SCHEDULE							
MARK	INPUT (KW)	FRAME SIZE			MOUNTING TYPE	MODEL	MANUFACTURER
		LENGTH	WIDTH	DEPTH			
ALL EH	6.0	56"	8.5"	3.5"	BRACKET	BH0420005	BROMIC
NOTES	<ul style="list-style-type: none"> CHICK-FIL-A HAS A NATIONAL ACCOUNT WITH BROMIC COMPANY FOR THE ELECTRIC HEATER PACKAGE. THE MECHANICAL CONTRACTOR SHALL PURCHASE THE ELECTRIC HEATERS DIRECTLY FROM BROMIC COMPANY. CONTACT BLAKE RUSSELL AT 858-381-4850, FOR PRICING AND AVAILABILITY. BROMIC HEATERS NOT PURCHASED THRU BROMIC COMPANY WILL NOT BE ACCEPTED. 						
REMARKS	<ol style="list-style-type: none"> 1. STAINLESS STEEL LENS WITH BLACK EMISSIVE COATING. 2. PROVIDE ENGRAVED PLASTIC LABEL AT EACH UNIT WITH UNIT DESIGNATION IN 1" HIGH WHITE LETTERS ON A BLACK BACKGROUND. 3. PROVIDE WITH MOUNTING BRACKETS PER MANUFACTURER'S RECOMMENDATIONS. 						

GAS FIRED INFRARED HEATER SCHEDULE							
MARK	INPUT (MBH)	FRAME SIZE			MOUNTING TYPE	MODEL	MANUFACTURER
		LENGTH	WIDTH	DEPTH			
ALL GH	50.0	48"	13"	10"	BRACKET	2352-NG	SCHWANK
REMARKS	<ol style="list-style-type: none"> 1. STEEL BURNER WITH CERAMIC BURNER TILES. 2. STAINLESS STEEL LENS WITH BLACK EMISSIVE COATING. 3. PROVIDE ENGRAVED PLASTIC LABEL AT EACH UNIT WITH UNIT DESIGNATION IN 1" HIGH WHITE LETTERS ON A BLACK BACKGROUND. MOUNT TO CANOPY DECK, FACING DOWNWARD, 12" LATERALLY FROM THE SIDE OF THE HEATER. 4. MOUNTING BRACKET PROVIDED AND INSTALLED BY CANOPY MFR. 5. PROVIDE HEAT SHIELD ABOVE EACH HEATER AT THE BOTTOM OF THE BRACKET. 						

CIRCULATING FAN SCHEDULE					
MARK	CFM	RPM	HP	MODEL	MANUFACTURER
REMARKS	<ol style="list-style-type: none"> 1. ALUMINUM PADDLE WITH STEEL HUB/SPIDER PROPELLER. 2. 360 DEG. ROTATING HEAD HORIZONTALLY AND VERTICALLY. 3. OSHA COMPLIANT DOUBLE LOCKING, COATED STEEL WIRE GUARD. 4. 3-SPEED, TOTALLY ENCLOSED, PERMANENTLY LUBRICATED BALL BEARING MOTOR. 5. FACTORY PRE-WIRED POWER CORD. 6. PROVIDE FACTORY WALL MOUNTING BRACKET. 7. PROVIDE ENGRAVED PLASTIC LABEL AT EACH UNIT WITH UNIT DESIGNATION IN 1" HIGH WHITE LETTERS ON A BLACK BACKGROUND. MOUNT TO UNDERSIDE OF CANOPY OR EXISTING OVER-HANG, FACING DOWNWARD, 12" LATERALLY FROM THE FAN LOCATION. 8. REMOVE PULL CHAIN EXTENSION AT ON/OFF SWITCH IN FIELD. 9. FACTORY CERTIFIED FOR OUTDOOR INSTALLATION. 				



Chick-fil-A

5200 Buffington Rd.
Atlanta Georgia,
30349-2998

Revisions:
Mark Date By
1 08.09.22
PERMIT ISSUE
- REVISIONS

Mark Date By
2 09.22.22
PERMIT REVISIONS

Mark Date By
3 10.28.22
PERMIT REVISIONS

Mark Date By
4 01.31.23
ISSUE FOR
CONSTRUCTION



Kurzynske & Associates
CONSULTING ENGINEERS
2900 Lebanon Pike, Ste. 201
Nashville, Tennessee 37214
Telephone: (615) 255-5203
Fax: (615) 255-5207
Email: mail@kurzynske.com

STORE #02182
BENCHWOOD

3339 BENCHWOOD RD.
DAYTON, OH 45414

SHEET TITLE
CANOPY
DETAILS &
SCHEDULES

VERSION: S06C-R
ISSUE DATE: 6.28.2022

Job No. : 20133.CD.R

Store : #2182

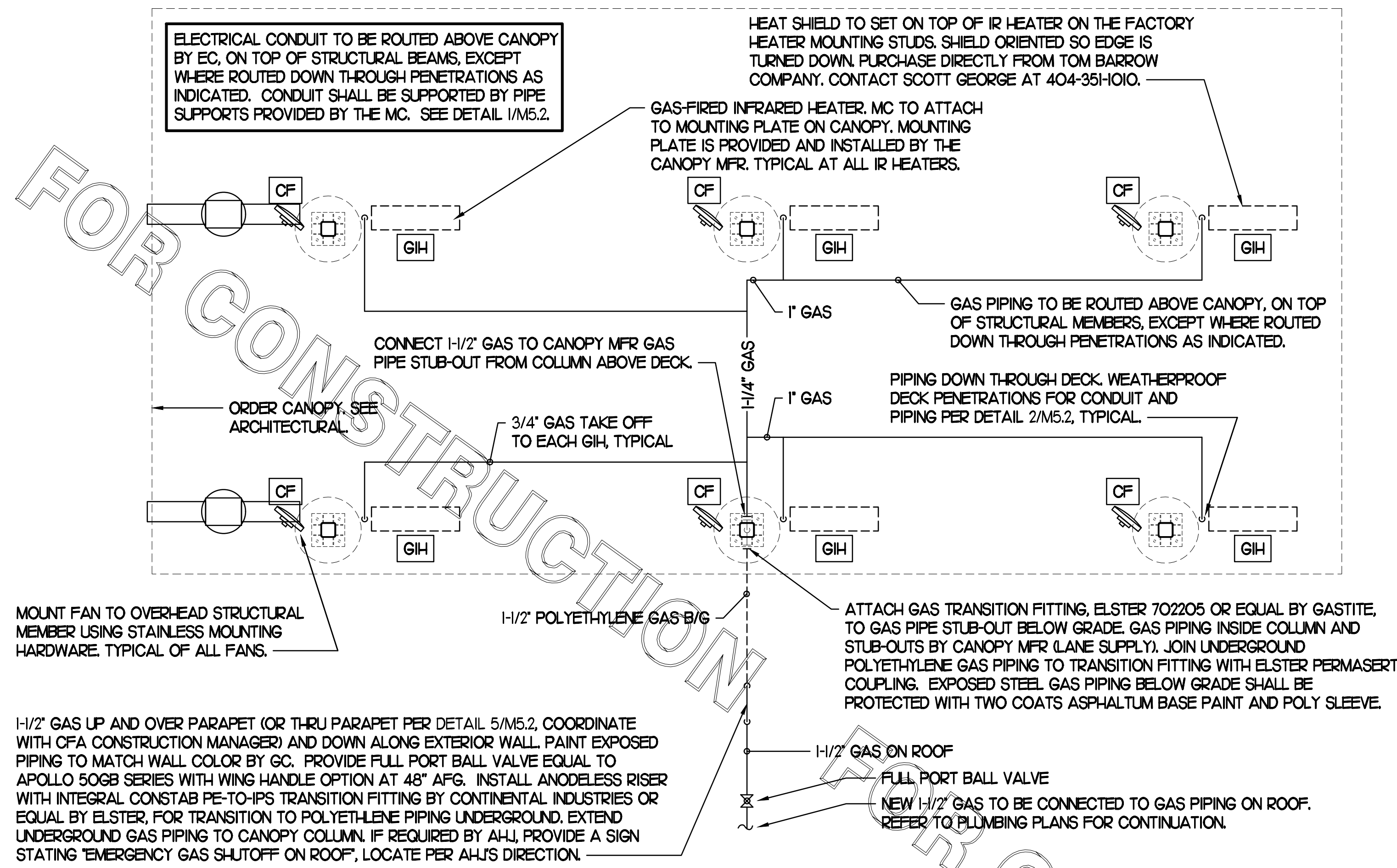
Date : 6.28.22

Drawn By : DSF

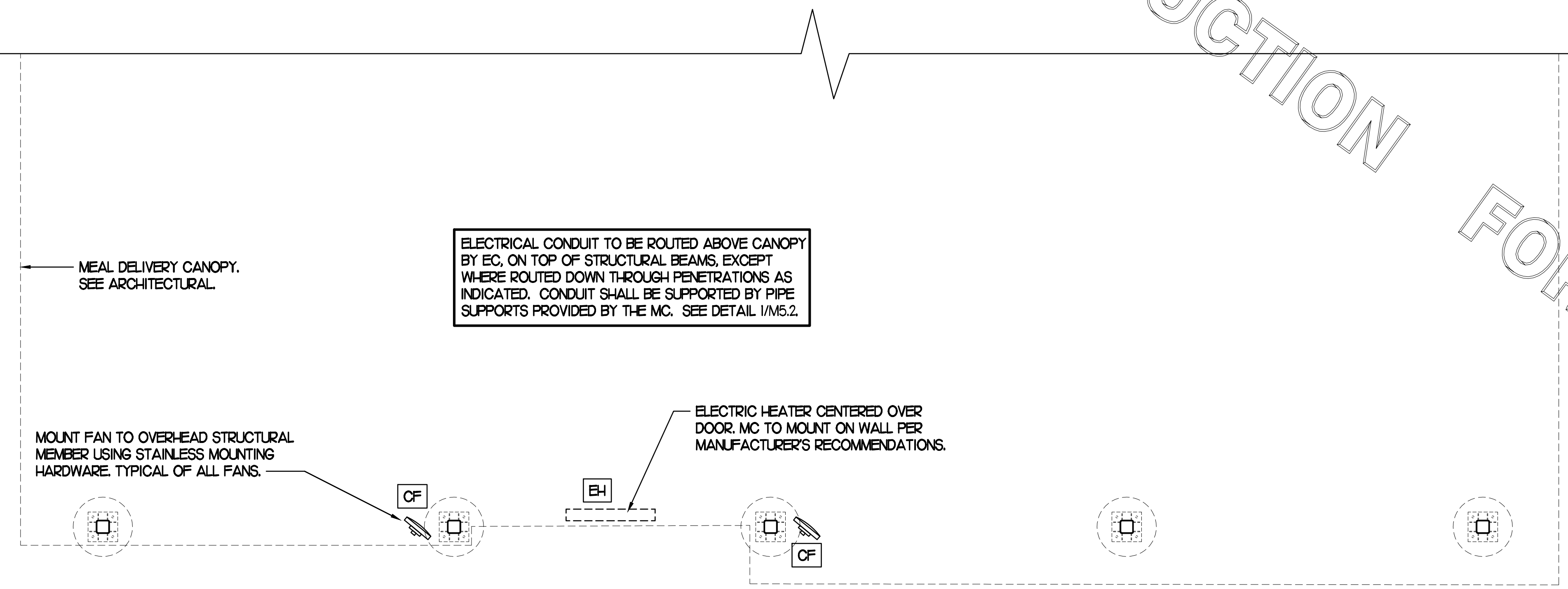
Checked By: MK

Sheet

M5.2



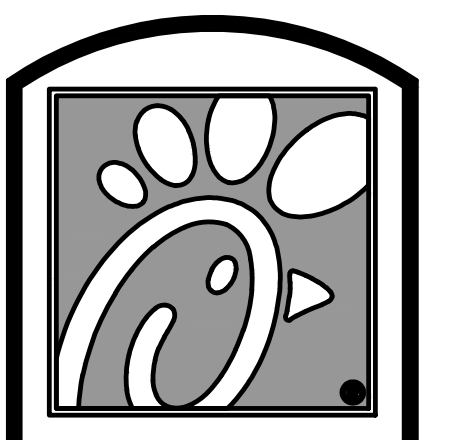
1 HVAC PLAN - ORDER POINT CANOPY
NO SCALE



2 HVAC PLAN - MEAL DELIVERY CANOPY
NO SCALE

LEGEND			
CF#1	CIRCULATING FAN #1 (TYP)	B/G	BELOW GRADE
GIH#1	GAS INFRARED HEATER #1 (TYP)	EC	ELECTRICAL CONTRACTOR
---	NEW GAS PIPING ABOVE GRADE	MC	MECHANICAL CONTRACTOR
---	NEW GAS PIPING BELOW GRADE	---	CONDUIT ABOVE CANOPY DECK

- GENERAL NOTES**
- COORDINATE NEW WORK WITH EXISTING CONDUIT, STRUCTURE, AND PIPING. FIELD VERIFY EXISTING CONDITIONS PRIOR TO START OF WORK.
 - COORDINATE LOCATION AND RESPONSIBILITIES FOR UNDERGROUND PIPING AND ASSOCIATED TRENCHING WITH GENERAL CONTRACTOR PRIOR TO START OF WORK.
 - EXPOSED GAS PIPING SHALL BE PAINTED BY GENERAL CONTRACTOR.
 - ACTUAL NUMBER OF GAS INFRARED HEATERS & COOLING FANS WILL BE DETERMINED BY SITE-SPECIFIC CANOPY LAYOUT AND EQUIPMENT LOCATIONS, AS INDICATED ON ARCHITECTURAL PLANS.
 - CONTROL WIRING FOR HEATERS BY EC. COORDINATE WIRE GAUGE WITH EC. SEE ELECTRICAL AND CONTROLS DRAWINGS, TYP.



5200 Buffington Rd.
Atlanta Georgia,
30349-2998

Revisions:

Mark	Date	By
1	08.09.22	PERMIT ISSUE
2	09.22.22	PERMIT REVISIONS
3	10.28.22	PERMIT REVISIONS
4	01.31.23	ISSUE FOR CONSTRUCTION



Kurzynske & Associates
CONSULTING ENGINEERS
2900 Lebanon Pike, Ste. 201
Nashville, Tennessee 37214
Telephone: (615) 255-5203
Fax: (615) 255-5207
Email: mail@kurzynske.com

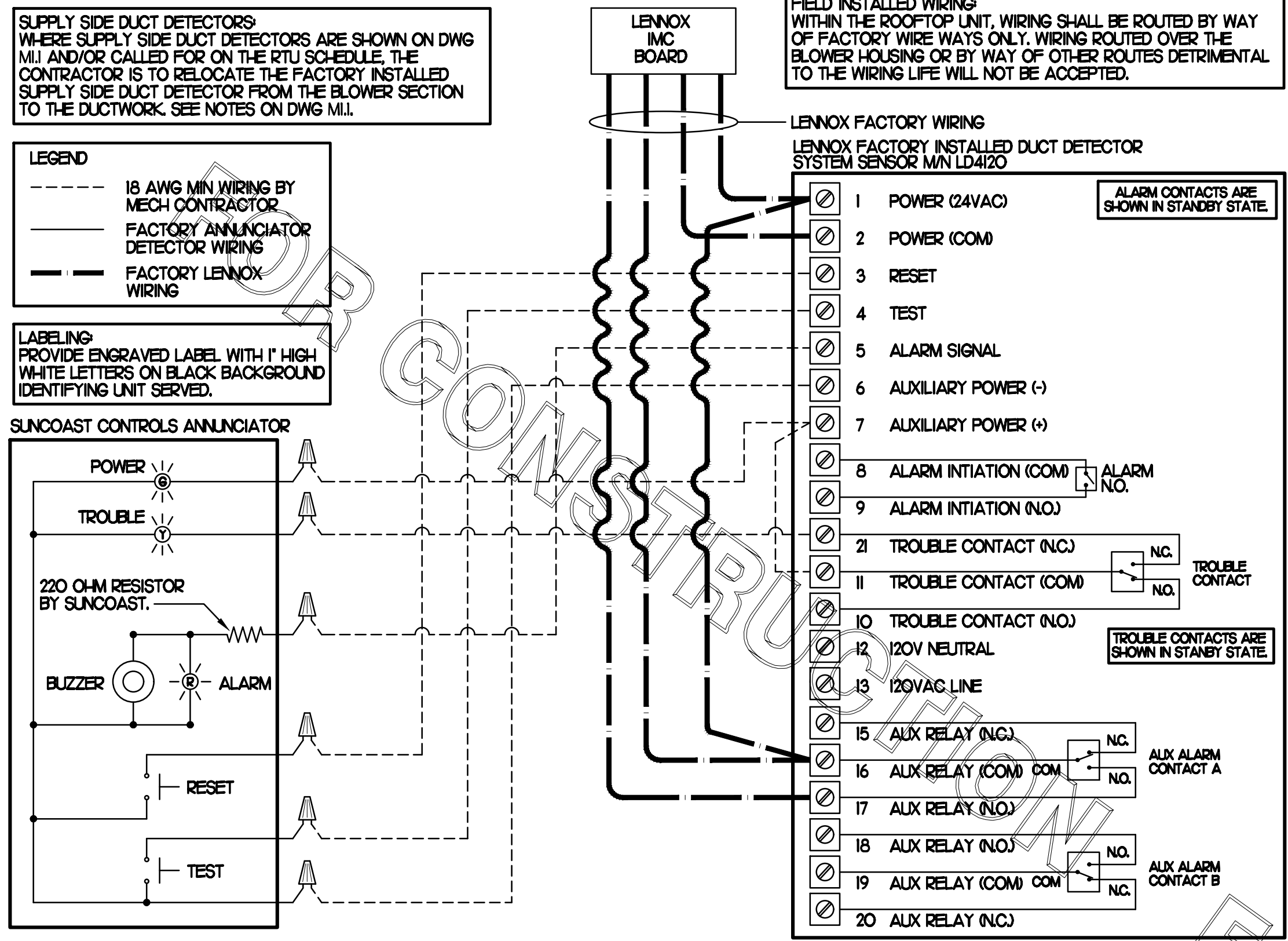
STORE #02182
BENCHWOOD
3339 BENCHWOOD RD.
DAYTON, OH 45414

SHEET TITLE
CANOPY
HVAC PLANS

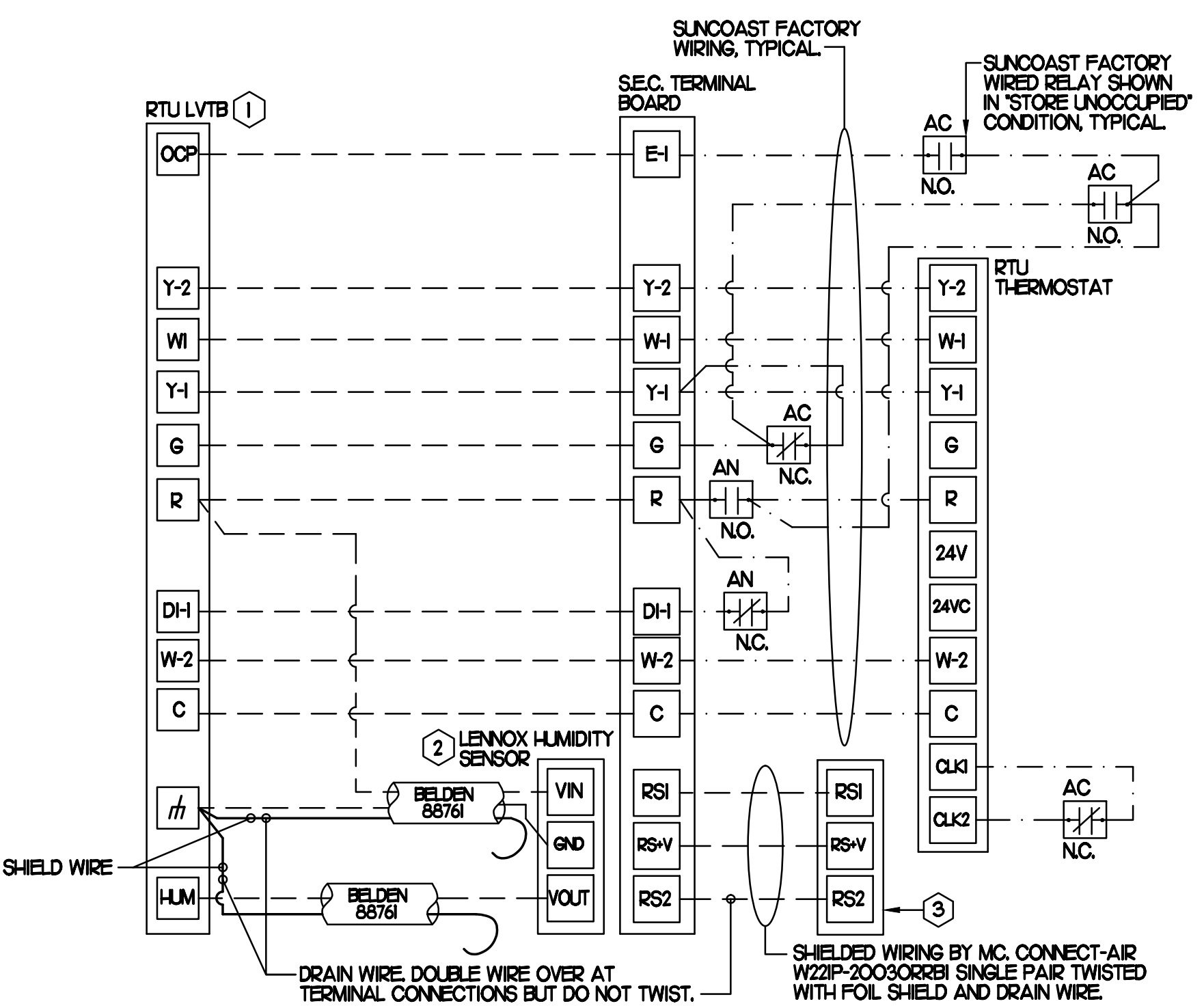
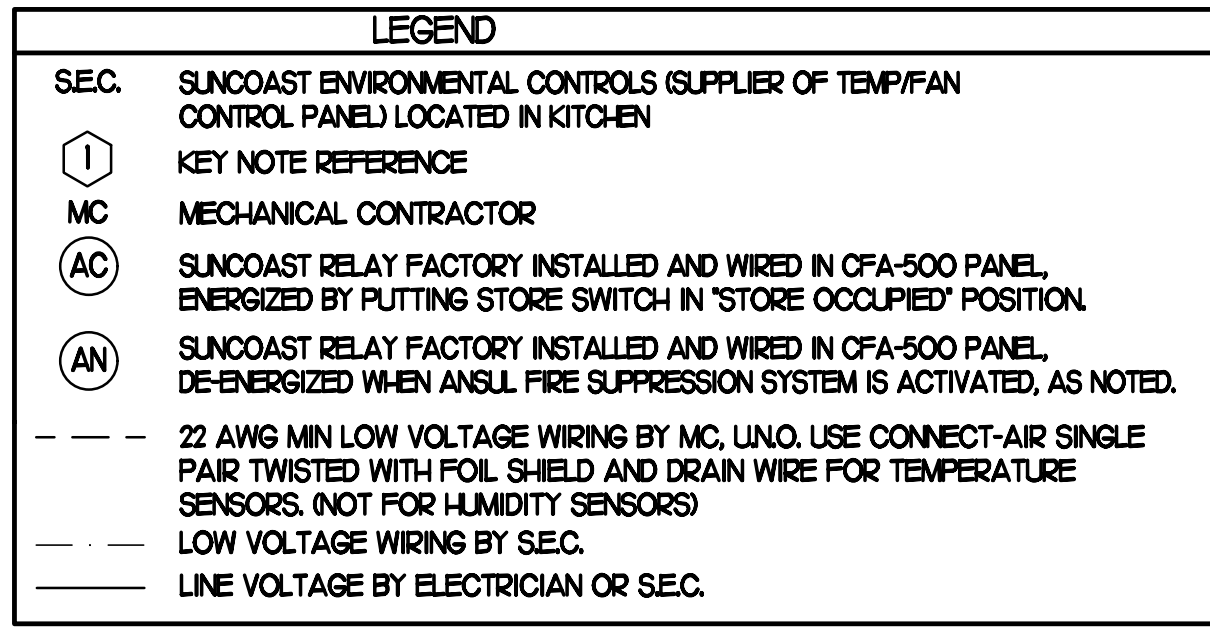
VERSION: S06C-R
ISSUE DATE: 6.28.2022

Job No. : 20133.CD.R
Store : #2182
Date : 6.28.22
Drawn By : DSF
Checked By : MK

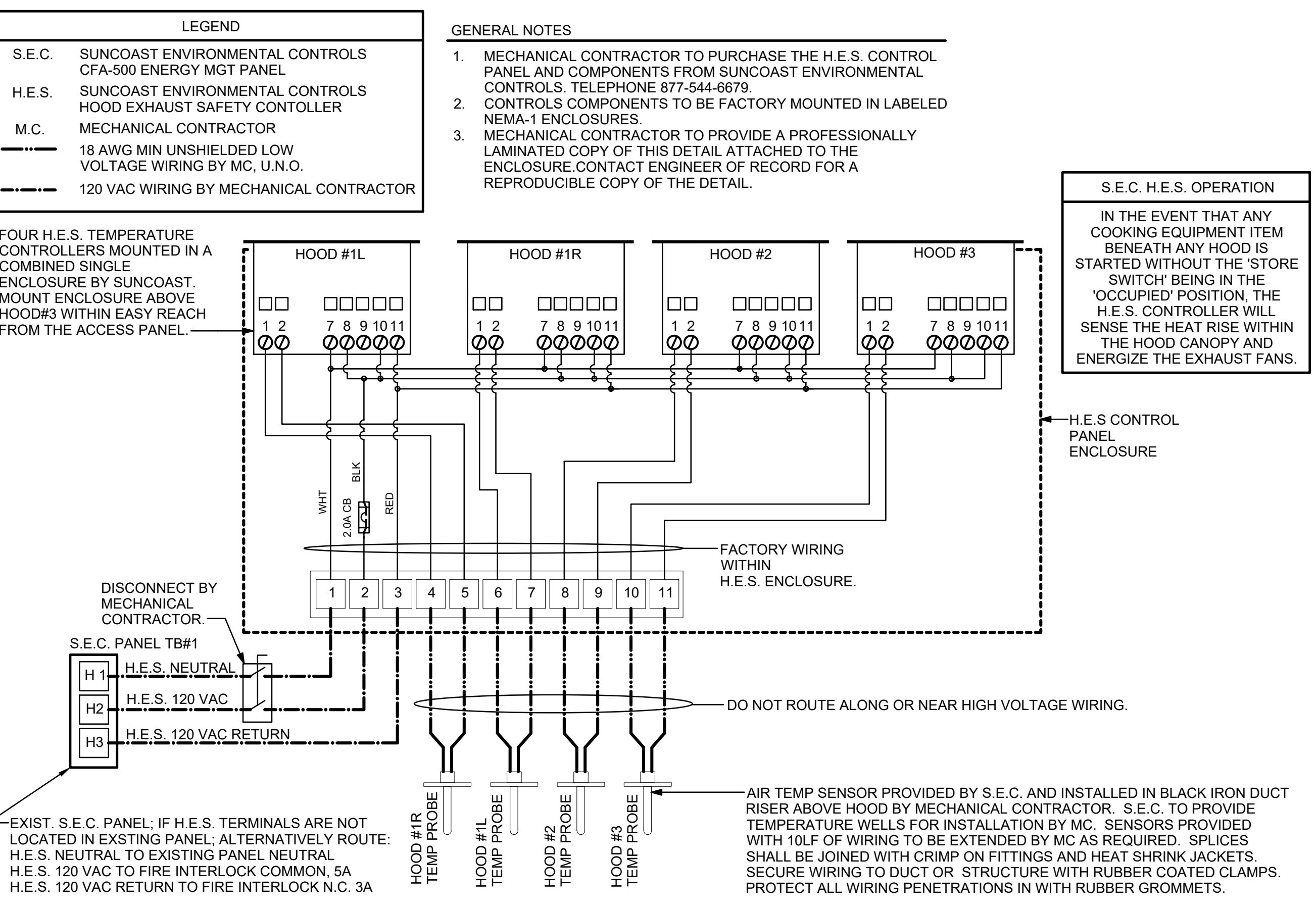
Sheet
M5.I



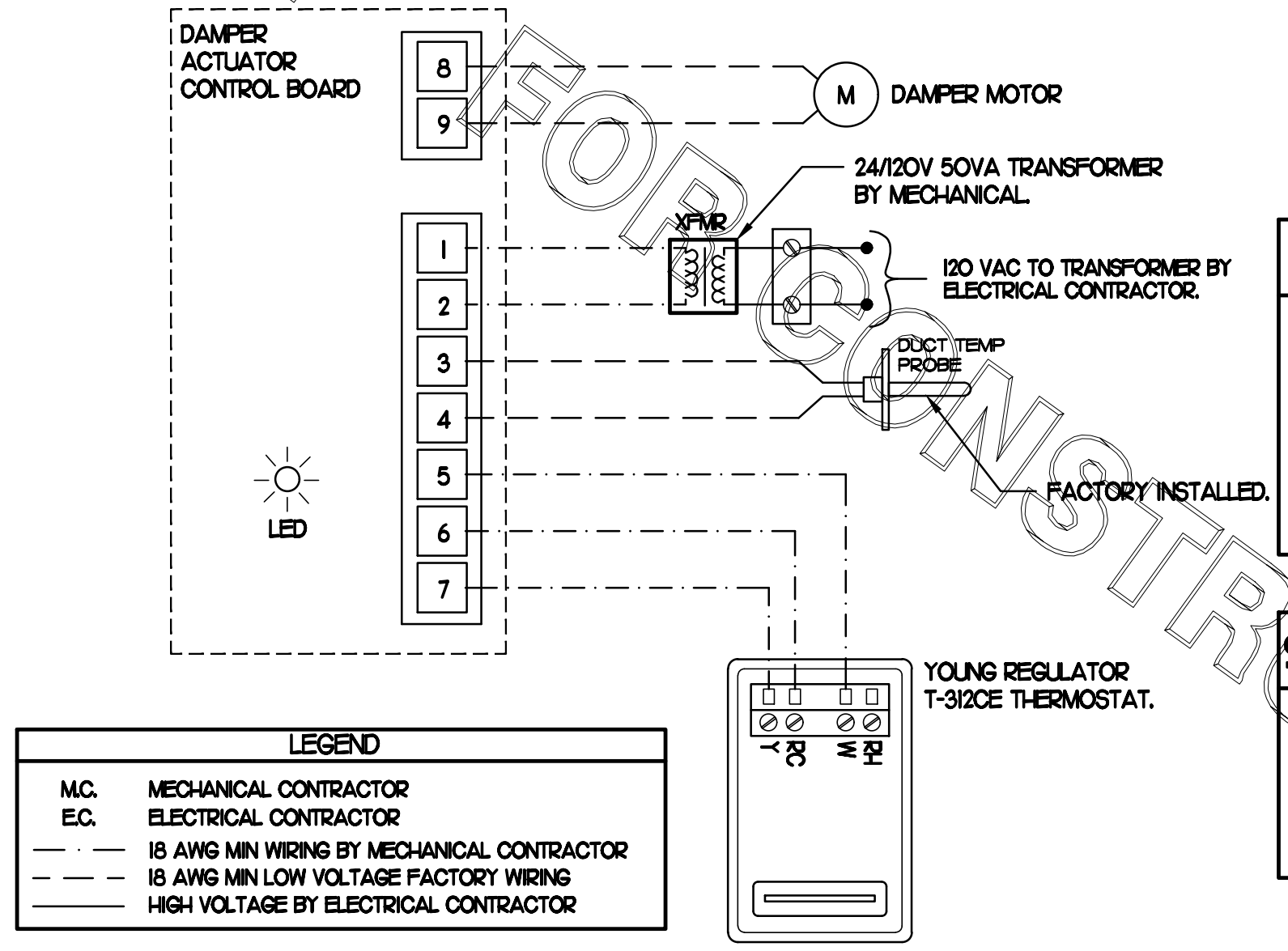
1 SMOKE DETECTOR AND ANNUNCIATOR WIRING DIAGRAM - LENNOX
NO SCALE



2 ROOFTOP UNIT CONTROL WIRING - LENNOX
NONE



3 HOOD EXHAUST SAFETY SWITCH (H.E.S.) WIRING DIAGRAM
NONE



4 OFFICE VAV DAMPER AND TSTAT
NO SCALE

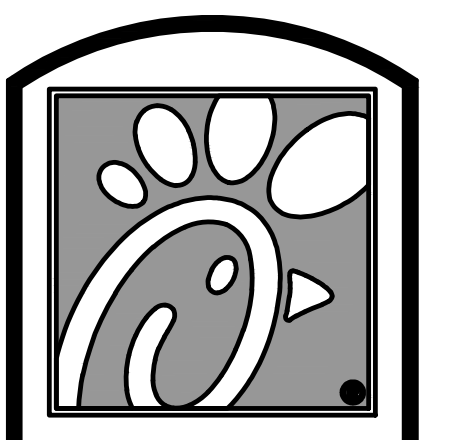
PROVIDE A PROFESSIONALLY LAMINATED COPY OF THESE DETAILS TO BE INSTALLED INSIDE THE ROOFTOP UNIT CONTROL CABINET. USE A SETON CHART FRAME STYLE #68624, TELEPHONE NUMBER 800-243-6624, FOR MOUNTING THE DETAIL. ATTACH THE FRAME TO THE INTERIOR OF THE UNIT IN PLAIN AND EASY VIEW OF THE CONTROLS SECTION. CONTACT ENGINEER OF RECORD FOR A REPRODUCIBLE COPY OF THE DETAIL.

- NOTES:**
- FOR ALL RTUS EXCEPT AT KITCHEN RTUS, CHANGE PRODIGY-M3 BOARD CONTROL PARAMETER #5 TO ZERO (#5 ON LCH UNITS). ON OLDER BOARDS THIS IS ECTO PARAMETER 3.01 FOR LCH UNITS OR ECTO 2.01 FOR LCH UNITS. THIS WILL CAUSE THE O.A. DAMPER TO OPEN ON 'OCCUPIED' START. AT KITCHEN RTUS (LGH TYPE) LEAVE THE SETTING AT THE DEFAULT VALUE SO THE O.A. DAMPER WILL REMAIN CLOSED FOR THE FIRST 60 MINUTES AFTER 'OCCUPIED' START. AT KITCHEN RTUS (LCH TYPE) CHANGE THE VALUE TO 5400 SO THE O.A. DAMPER WILL REMAIN CLOSED FOR THE FIRST 90 MINUTES AFTER 'OCCUPIED' START.
 - MECHANICAL CONTRACTOR SHALL MAKE PLASTIC LAMINATE OF THIS DETAIL AND INSTALL PERMANENTLY ON INSIDE DOOR OF ROOFTOP UNIT CONTROL COMPARTMENT.
 - SEE DETAILS THIS SHEET FOR SMOKE DETECTOR AND ANNUNCIATOR WIRING.
 - AT HUMIDITROL RTUS SET PRODIGY-M3 BOARD CONTROL PARAMETER #05 FOR DEHUMIDIFICATION OPERATION TO A VALUE OF 7. OLDER MI-8 IMC BOARD ECTO PARAMETER 4.24 VALUE TO BE SET TO A VALUE OF 7.
 - AT HUMIDITROL RTUS, SET PRODIGY-M3 BOARD CONTROL PARAMETER #06 FOR DEHUMIDIFICATION SET POINT TO A VALUE OF 60 (60% RH).
 - AT HUMIDITROL RTUS, SET PRODIGY-M3 BOARD CONTROL PARAMETER #07 FOR DEHUMIDIFICATION MODE DEAD BAND TO A VALUE OF 2 (2% RH).
 - SET ALL THERMOSTATS FOR AUTO CHANGEOVER.
 - FOR MSAV UNITS, SET THE MSAV LOW SPEED SETTING TO THE SAME VALUE AS THE HIGH SPEED SETTING AFTER TAB IS COMPLETE.
 - PROVIDE PLASTIC ENGRAVED LABEL AT ALL NEW SENSORS WITH 1/2" HIGH WHITE LETTERING ON BLACK BACKGROUND, I.E. "ACH2 HUMIDITY SENSOR" OR "ACH2 TEMP SENSOR". PLACE LABELS ON WALL ADJACENT TO DEVICE. DO NOT APPLY DIRECTLY TO DEVICE.

- KEYED NOTES:**
- LOW VOLTAGE WIRING TO RTU TO BE ROUTED TO UNIT THRU FACTORY WIREWAY.
 - HUMIDITROL UNITS ONLY: WIRING TO HUMIDITY SENSOR TO BE MADE WITH TWO SEPARATE RUNS OF SHIELDED TWISTED PAIR. TERMINATE SHIELD WIRES AT TB-1, LEAVE OPEN AT SENSOR.
 - NETWORK TSTAT REMOTE TEMP SENSOR PROVIDED BY SUNCOAST AND INSTALLED BY MC. FIELD CALIBRATE EACH SENSOR.

- NOTES**
- SEE DWG M.I. FOR COMPONENT MODEL NUMBERS AND ORDERING INFORMATION.
 - 120V POWER FOR TRANSFORMER TO BE NON-SWITCHED AND HOT 24/7.
 - PROVIDE ALL NECESSARY WIRING AND COMPONENTS TO MAKE CONTROL AND POWER CONNECTIONS TO TRANSFORMER, ZONE DAMPER, AND THERMOSTAT PER MANUFACTURER'S IOM.

- SEQUENCE OF OPERATION**
- WHEN THE SUPPLY AIR TEMPERATURE IS LESS THAN 72F THE DAMPER WILL OPEN FULLY ON A RISE IN SPACE TEMPERATURE ABOVE THE SETPOINT.
 - WHEN THE SUPPLY AIR TEMPERATURE IS GREATER THAN 72F THE DAMPER WILL OPEN FULLY ON A FALL IN SPACE TEMPERATURE BELOW THE SETPOINT.



5200 Buffington Rd.
Atlanta Georgia,
30349-2998

Revisions:

Mark	Date	By
1	08.09.22	
PERMIT ISSUE - REVISIONS		
2	09.22.22	
PERMIT REVISIONS		
3	10.28.22	
PERMIT REVISIONS		
4	01.31.23	
ISSUE FOR CONSTRUCTION		



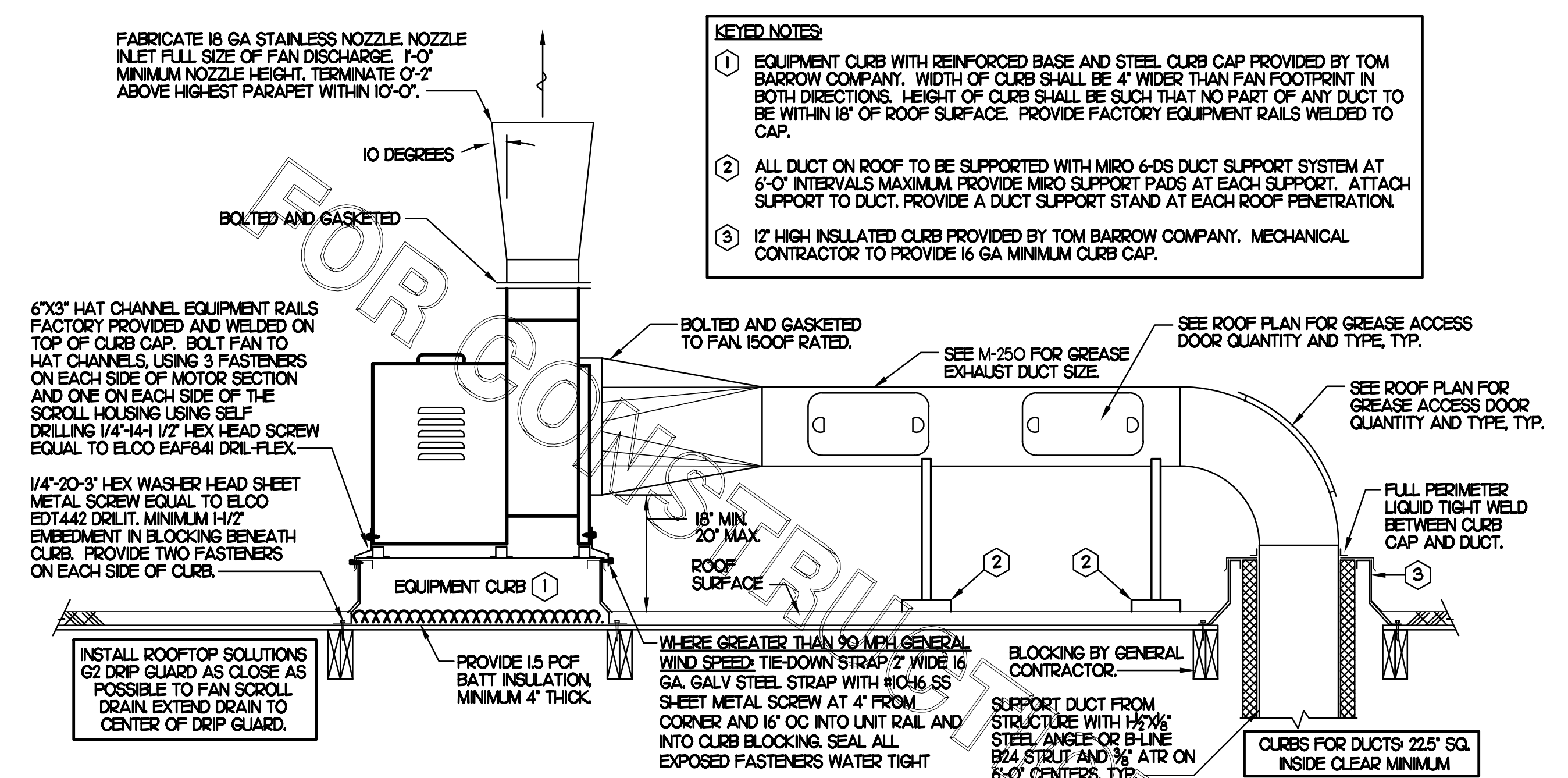
Kurzynske & Associates
CONSULTING ENGINEERS
2900 Lebanon Pike, Ste. 201
Nashville, Tennessee 37214
Telephone: (615) 255-5203
Fax: (615) 255-5207
Email: mail@kurzynske.com

STORE #02182
BENCHWOOD
3339 BENCHWOOD RD.
DAYTON, OH 45414

SHEET TITLE
HVAC
CONTROLS
VERSION: S06C-R
ISSUE DATE: 6.28.2022

Job No. : 20133.CD.R
Store : #2182
Date : 6.28.22
Drawn By : DSF
Checked By: MK

Sheet
M4.I



- KEYED NOTES:**
- EQUIPMENT CURB WITH REINFORCED BASE AND STEEL CURB CAP PROVIDED BY TOM BARRON COMPANY. WIDTH OF CURB SHALL BE 4" WIDER THAN FAN FOOTPRINT IN BOTH DIRECTIONS. HEIGHT OF CURB SHALL BE SUCH THAT NO PART OF ANY DUCT TO BE WITHIN 18" OF ROOF SURFACE. PROVIDE FACTORY EQUIPMENT RAILS WELDED TO CAP.
 - ALL DUCT ON ROOF TO BE SUPPORTED WITH MIRO 6-DS DUCT SUPPORT SYSTEM AT 6'-0" INTERVALS MAXIMUM. PROVIDE MIRO SUPPORT PADS AT EACH SUPPORT. ATTACH SUPPORT TO DUCT. PROVIDE A DUCT SUPPORT STAND AT EACH ROOF PENETRATION.
 - 17" HIGH INSULATED CURB PROVIDED BY TOM BARRON COMPANY. MECHANICAL CONTRACTOR TO PROVIDE 16 GA MINIMUM CURB CAP.

2 KITCHEN HOOD EXHAUST FAN - UTILITY SET FAN
NO SCALE

SHEET NOTES

- ALL DUCTWORK AND UNFINISHED METAL ON ROOF EXCEPT STAINLESS SHALL BE PREPARED WITH TWO COATS OF SHERWIN WILLIAMS B66-200 SERIES DTM WHITE ACRYLIC SEMI-GLOSS INDUSTRIAL MAINTENANCE COATING. DEGREASE AND PRIME BARE METAL SURFACE WITH ONE COAT OF SHERWIN WILLIAMS DTM PRIMER PRIOR TO PAINTING.
- AT EACH PIECE OF ROOF EQUIPMENT, PROVIDE A PLASTIC ENGRAVED LABEL WITH 1" HIGH WHITE LETTERS ON A BLACK BACKGROUND. THE LABEL IS TO HAVE A SELF ADHESIVE BACKING.
- MAINTAIN 18" CLEARANCE FROM GREASE EXHAUST DUCTWORK ABOVE ROOF TO ANY COMBUSTIBLE CONSTRUCTION INCLUDING PARAPET WALLS.

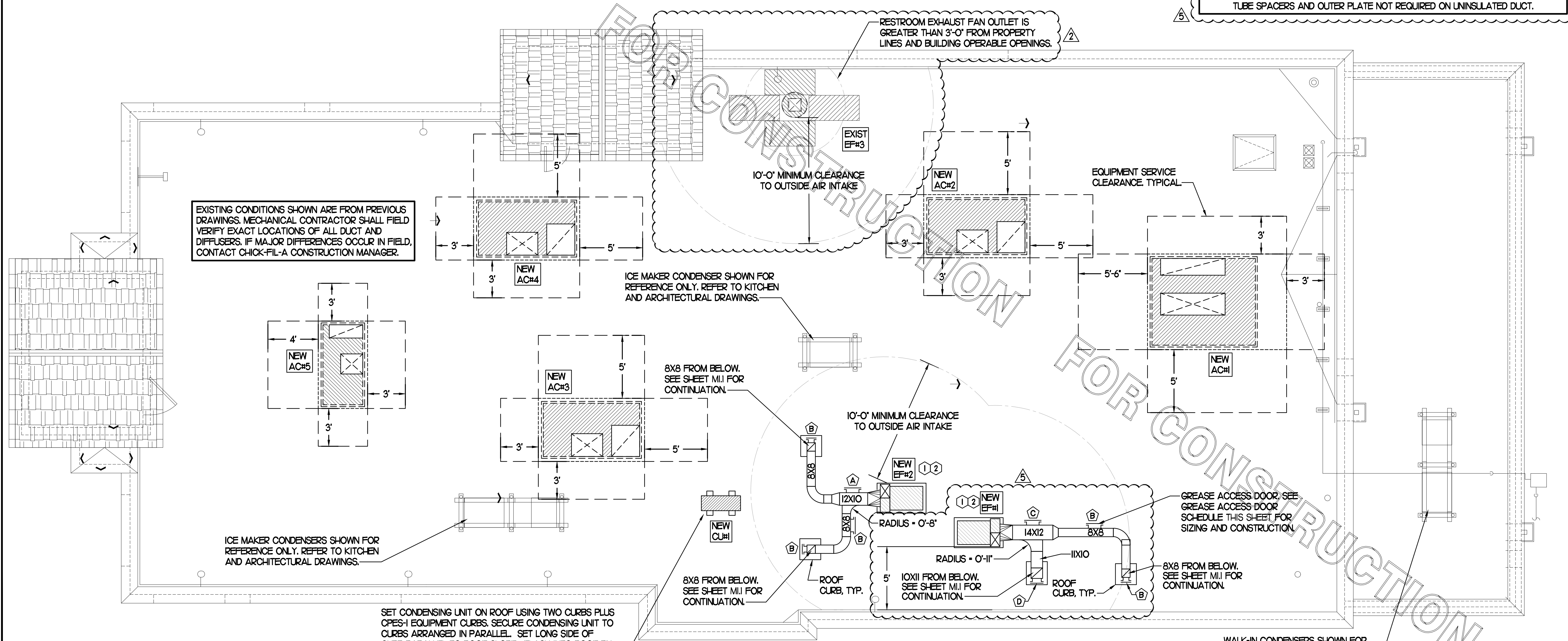
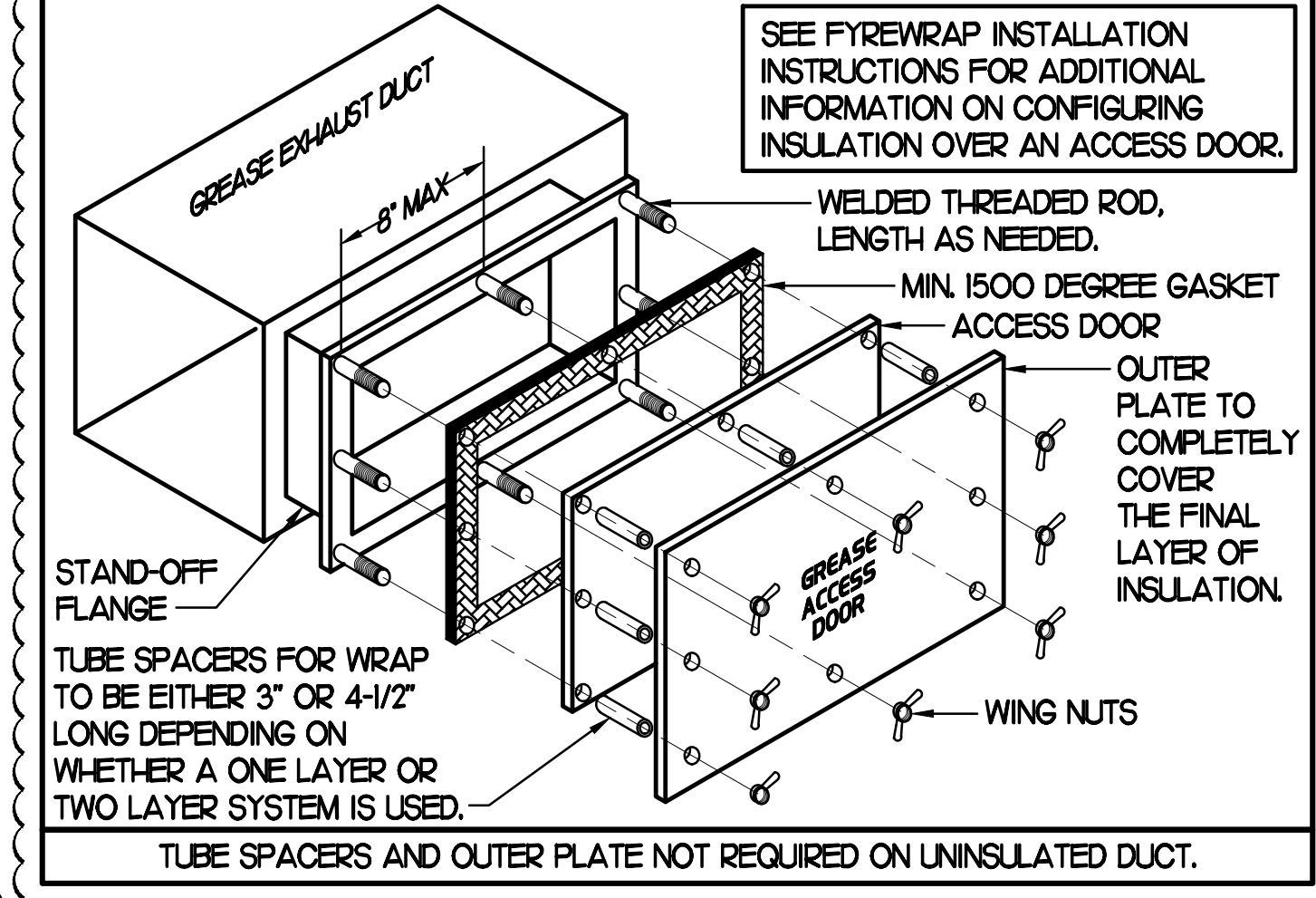
KEY NOTES

- FABRICATE DISCHARGE AIR NOZZLE. LOCATE EXHAUST TERMINATION A MINIMUM 10'-0" FROM OUTSIDE AIR INTAKES. SEE DETAIL 2 THIS SHEET.
- GREASE EXHAUST DUCT LOCATED ON ROOF SHALL SLOPE 1/4" PER FOOT TOWARDS THE HOOD, THE FAN, OR A COMBINATION OF THE TWO SUCH THAT NO PORTION OF THE RADIUS ELBOW AT THE CURB IS BELOW THE CURB CAP AND SUCH THAT THE FAN BASE SETS DIRECTLY ON THE CURB RAILS. THE BOTTOM OF THE RADIUS ELBOW MAY BE EVEN FLUSH WITH THE CURB CAP, BUT NOT BELOW THE CAP. THE DUCT AT THE FAN MUST BE CENTERED ON THE FAN INLET. THE MC MAY ADD A VERTICAL RISER AT THE RADIUS ELBOW LOCATED AT THE DUCT CURB AS NEEDED IN ORDER TO CENTER THE DUCT ON THE FAN INLET.

GREASE ACCESS DOOR SCHEDULE

MARK	OPENING SIZE	DOOR SIZE	REMARKS
A	7.5H X 14W	9.5H X 16W	I
B	5.5H X 14W	7.5H X 16W	I
C	9.5H X 14W	11.5H X 16W	I
D	8.5H X 14W	10.5H X 16W	I

1. ACCESS DOORS SHALL BE ULL 1978 LISTED OR FIELD FABRICATED, REQUIRE NO TOOLS FOR REMOVAL AND MEET THE REQUIREMENTS OF THE CURRENT EDITION OF THE IMC. ACCESS DOOR ASSEMBLY SHALL BE WELDED IN PLACE TO THE GREASE EXHAUST DUCT AND THE ACCESS DOOR SHALL BE SECURED WITH THUMB SCREWS. ACCESS DOORS SHALL BE SEALED WITH A MINIMUM 1500 DEGREE GASKET MATERIAL EQUIVALENT TO THAT MANUFACTURED BY BRETON INDUSTRIES, INC (800) 382-2491.



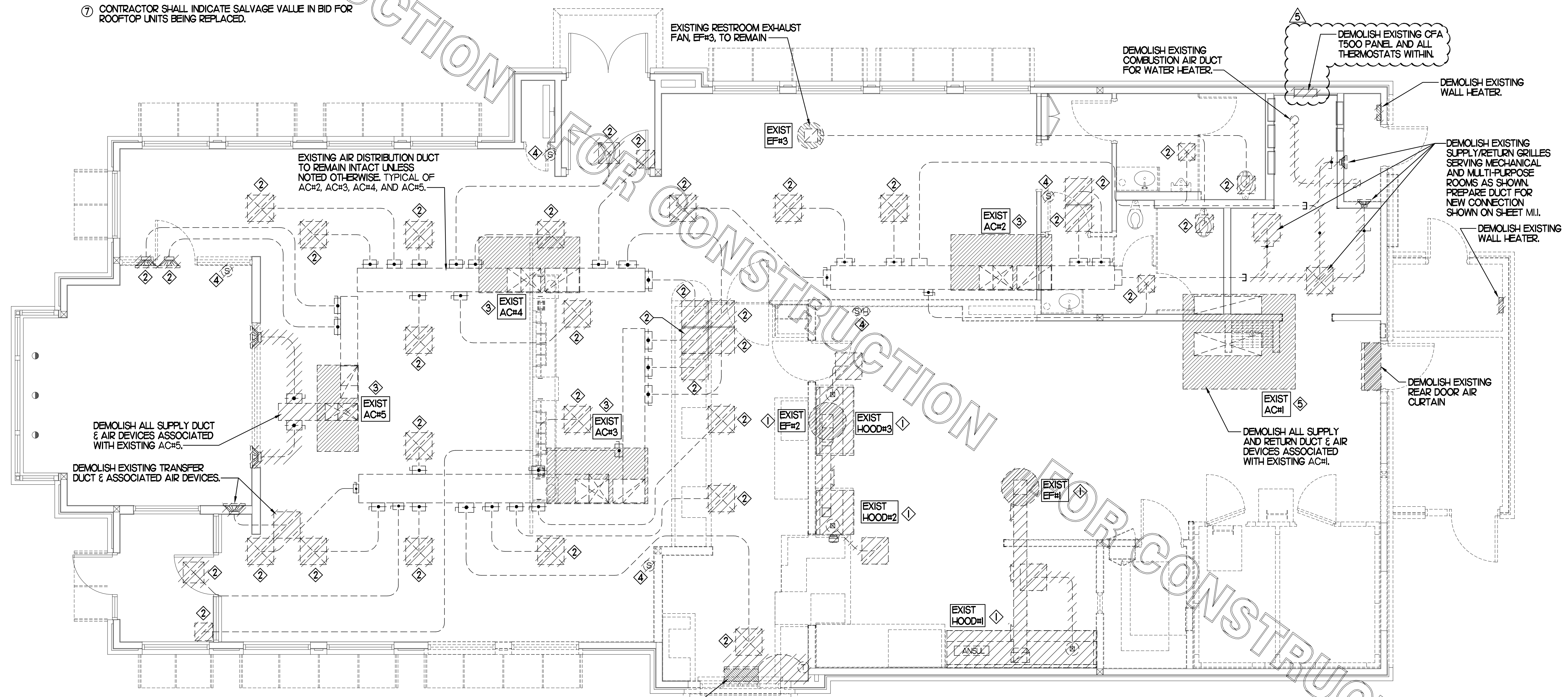
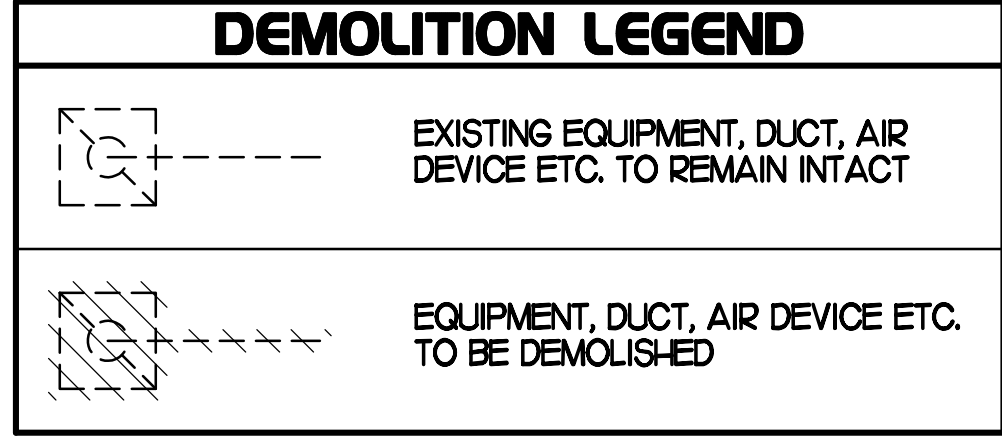
1 MECHANICAL ROOF PLAN
SCALE: 1/4"=1'-0"

DEMOLITION NOTES

- ① CONTRACTOR IS RESPONSIBLE FOR OBTAINING ALL NECESSARY PERMITS AND PAYING ALL APPLICABLE FEES.
- ② DISPOSAL OF EQUIPMENT AND MATERIALS REQUIRED TO BE REMOVED SHALL BE THE RESPONSIBILITY OF THE CONTRACTOR PERFORMING THE WORK.
- ③ DE-ENERGIZE ALL ELECTRICAL CIRCUITS RELATED TO EQUIPMENT THAT WILL BE MOVED OR REMOVED PRIOR TO STARTING WORK. DE-ENERGIZED CIRCUITS SHALL BE PROTECTED WITH LOCKING DEVICES USING APPROPRIATE WARNING LABELS.
- ④ MECHANICAL CONTRACTOR SHALL BE RESPONSIBLE FOR PATCHING ROOF AFTER REMOVAL OF EXISTING MECHANICAL EQUIPMENT. SEE ARCHITECTURAL DRAWINGS FOR ROOF PATCHING REQUIREMENTS.
- ⑤ EXCEPT WHERE NOTED, EXISTING REMOTE TEMPERATURE &/OR HUMIDITY SENSORS TO REMAIN. IF DURING RENOVATION PURPOSES CONTROLS SHALL BE TAKEN DOWN, MECHANICAL CONTRACTOR SHALL BE RESPONSIBLE FOR REINSTALLING AND TO PROVIDE ANY ADDITIONAL WIRING NEEDED. VERIFY EXISTING UNIT CONTROLS ARE IN GOOD WORKING ORDER. IF NOT, CONTACT CHICK-FIL-A CONSTRUCTION MANAGER.
- ⑥ MECHANICAL CONTRACTOR SHALL REPLACE FILTERS FOR ALL RTUs AT END OF PROJECT AND PRIOR TO REOPENING MC TO PROVIDE PROPOSAL TO FACILITIES MANAGER, CONSTRUCTION MANAGER, AND OPERATOR TO CORRECT EXISTING RTU PUNCH ITEMS IDENTIFIED BY HALTON.
- ⑦ CONTRACTOR SHALL INDICATE SALVAGE VALUE IN BID FOR ROOFTOP UNITS BEING REPLACED.

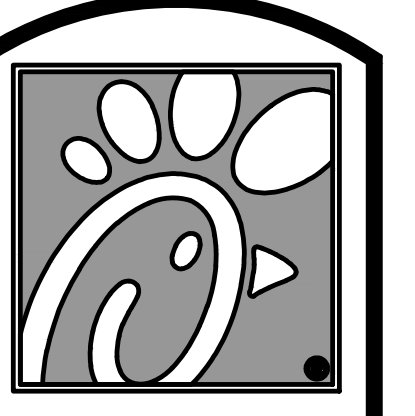
DEMOLITION KEY NOTES

- ① DEMOLISH EXISTING HOOD, ALL ASSOCIATED GREASE DUCT, CAPTURE JET FAN AND DIFFUSER (IF EXISTING), EXHAUST FAN, AND ITS ASSOCIATED ROOF CURB. PATCH AND REPAIR ROOF TO MATCH SURROUNDING CONSTRUCTION.
- ② DETACH AND DEMOLISH EXISTING AIR DEVICE. SECURE DUCT ABOVE CEILING GRID FOR RE-CONNECTION. SEE SHEET M.I.I. FOR NEW CONNECTION.
- ③ EXISTING RTU TO BE REPLACED WITH NEW AS SCHEDULED ON SHEET M3.I. DEMOLISH EXISTING RTU UNLESS NOTED OTHERWISE, DEMOLISH ALL EXISTING UNIT CONTROLS (REMOTE TEMP SENSOR, REMOTE HUMIDITY SENSOR, TSTAT, REMOTE SMOKE DETECTOR ANNUNCIATOR, ETC.). EXISTING ROOF CURB AND SUPPLY & RETURN DUCT TO REMAIN (UNLESS NOTED OTHERWISE). COVER EXISTING ROOF CURB WEATHER-TIGHT FOR RE-USE. GC BID ALTERNATE MATERIALS AND LABOR TO BE BILLED UNDER SEPARATE CONTRACT AND COORDINATED VIA WORK ORDER WITH FEQ SPECIALIST.
- ④ EXISTING REMOTE TEMPERATURE SENSOR AND/OR REMOTE HUMIDITY SENSOR TO BE REPLACED WITH NEW. DEMOLISH ASSOCIATED CONTROL WIRING. SEE SHEET M.I.I. FOR FURTHER INFORMATION.
- ⑤ DEMOLISH EXISTING KITCHEN A/C UNIT, UNIT CONTROLS (REMOTE TEMP. SENSOR, REMOTE HUMIDITY SENSOR, TSTAT, REMOTE SMOKE DETECTOR TEST/RESET STATIONS, ETC.), SUPPLY/RETURN AIR DROPS, ALL ASSOCIATED SUPPLY/RETURN DUCT & AIR DEVICES (UNLESS NOTED OTHERWISE). COVER ROOF CURB WEATHER-TIGHT FOR RE-USE. SEE SHEET M.I.I.



EXISTING CONDITIONS SHOWN ARE FROM PREVIOUS DRAWINGS. MECHANICAL CONTRACTOR SHALL FIELD VERIFY EXACT LOCATIONS OF ALL DUCT AND AIR DEVICES. IF MAJOR DIFFERENCES OCCUR IN FIELD, CONTACT CHICK-FIL-A CONSTRUCTION MANAGER.

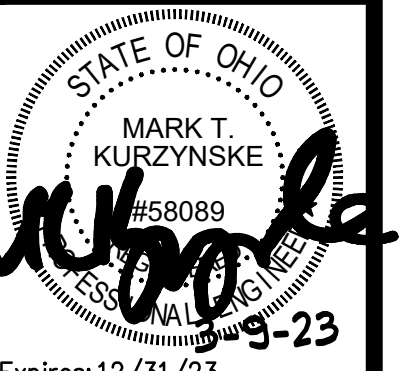
MECHANICAL DEMOLITION FLOOR PLAN
SCALE: 1/4"=1'-0"



Chick-fil-A
5200 Buffington Rd.
Atlanta Georgia,
30349-2998

Revisions:

Mark	Date	By
2	09.22.22	PERMIT REVISIONS
3	10.28.22	PERMIT REVISIONS
4	01.31.23	ISSUE FOR CONSTRUCTION
5	02.17.23	IFP-REVISION



Kurzynske & Associates
CONSULTING ENGINEERS
2900 Lebanon Pike, Ste. 201
Nashville, Tennessee 37214
Telephone: (615) 255-5203
Fax: (615) 255-5207
Email: mail@kurzynske.com

STORE #02182
BENCHWOOD

3339 BENCHWOOD RD.
DAYTON, OH 45414

SHEET TITLE
MECHANICAL
DEMO PLAN

VERSION: S06C-R
ISSUE DATE: 6.28.2022

Job No. : 20133.CD.R
Store : #2182
Date : 6.28.22
Drawn By : DSF
Checked By: MK

Sheet

MO.I

ANSUL

FIRE EXTINGUISHER		
ANSUL		
13051 5 LBS ABC MODEL AA05	QTY	_____
13052 10 LBS ABC MODEL AA10S	QTY	_____
13053 6 LTR CLASS K-GUARD K01-3	QTY	_____
AMEREX		
11238 5 LBS ABC MODEL B402	QTY	_____
11239 10 LBS ABC MODEL B456	QTY	_____
11240 6 LTR CLASS K MODEL C-260	QTY	_____
SUPPLIED BY HALTON		

FOR REFERENCE ONLY

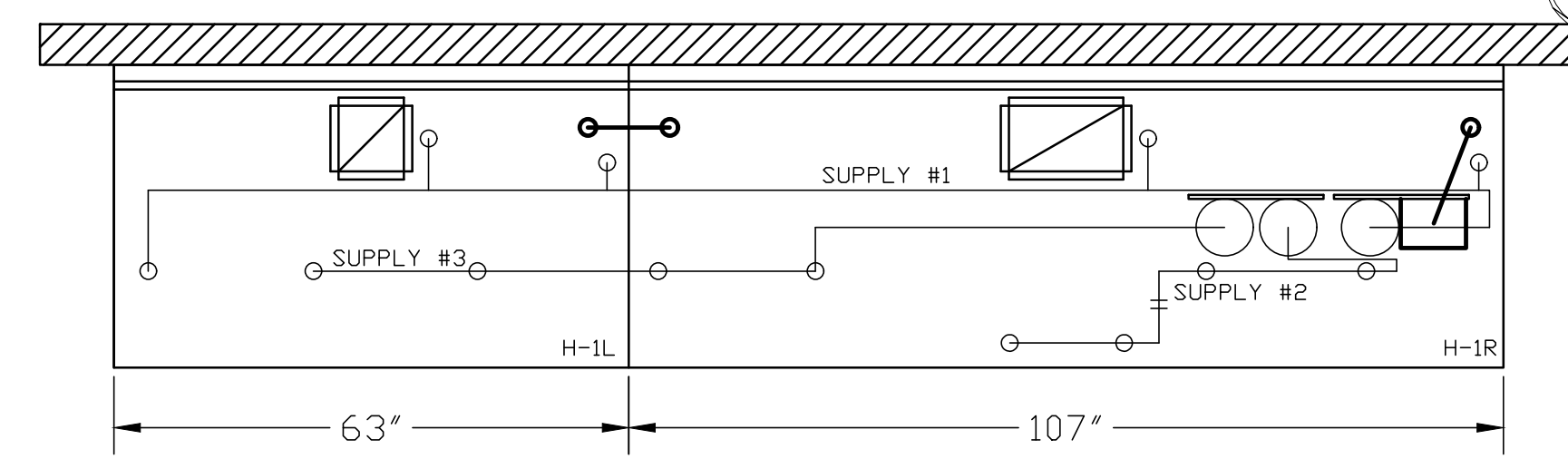
****SHOP NOTE****
 PROVIDE A QUANTITY OF TWO REMOTE PULL STATIONS FOR FIRE SYSTEM FOR HOODS H-2 & H-3. ONE PULL STATION REQUIRED FOR HOOD H-1L/R. PROVIDE A TOTAL OF THREE PULL STATIONS!!

FUSIBLE LINK RATINGS

ITEM	TEMP
OPEN FRYERS	450°
2 BURNER / FLAT TOP	450°
PRESSURE FRYERS	450°
GRILL	450°
EXHAUST COLLARS	450°

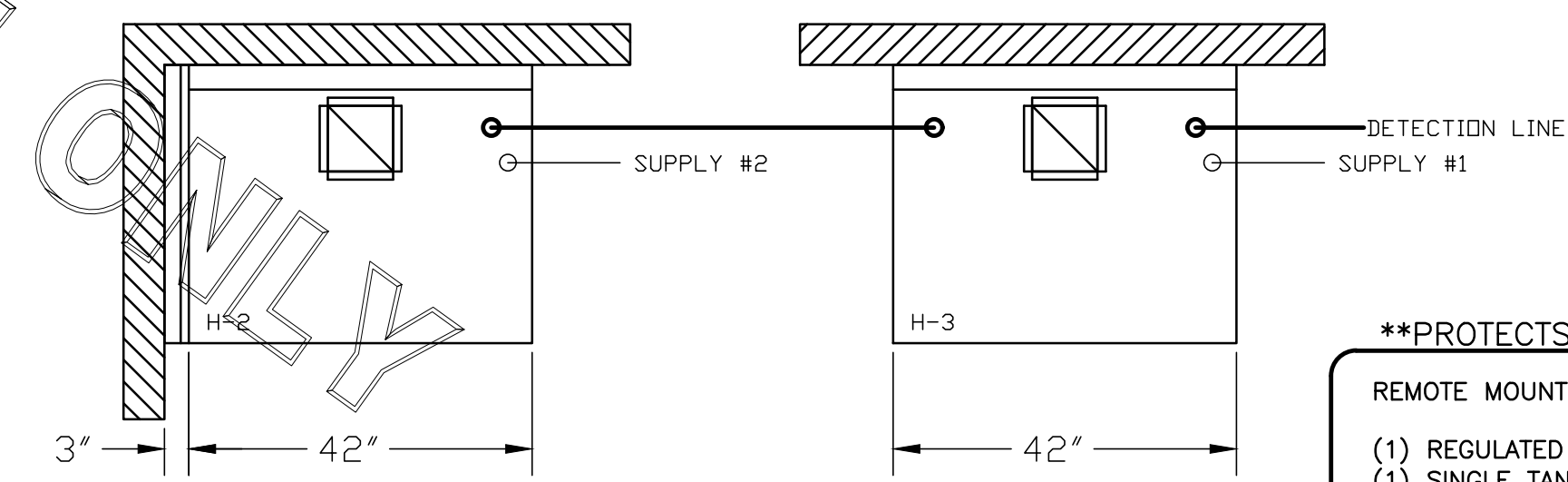
ANSUL R-102 FIRE SYSTEM NOTES
 THREE TANK SYSTEM MOUNTED ON TOP OF (H-1R)
 MAXIMUM FLOW POINTS = 33

ANSUL R-102 FIRE SYSTEM NOTES
 TWO TANK SYSTEM REMOTE MOUNTED
 MAXIMUM FLOW POINTS = 22



ANSUL R-102 FIRE SYSTEM
 A) 9 GALLON SYSTEM (3 TANKS)
 (MOUNTED ON HOOD H-1R)
 (FOR HOODS H-1L & H-1R)
 B) 3/8" BLACK IRON PIPING WITH
 3/8" S.S. APPLIANCE DROPS

(1) DEM REGULATED RELEASE
 (2) EXTRA MICRO SWITCH ASSEMBLIES
 (MOUNTED IN DEM REG. REL.)
 (1) DOUBLE TANK ENCLOSURE
 (3) 3 GALLON TANKS

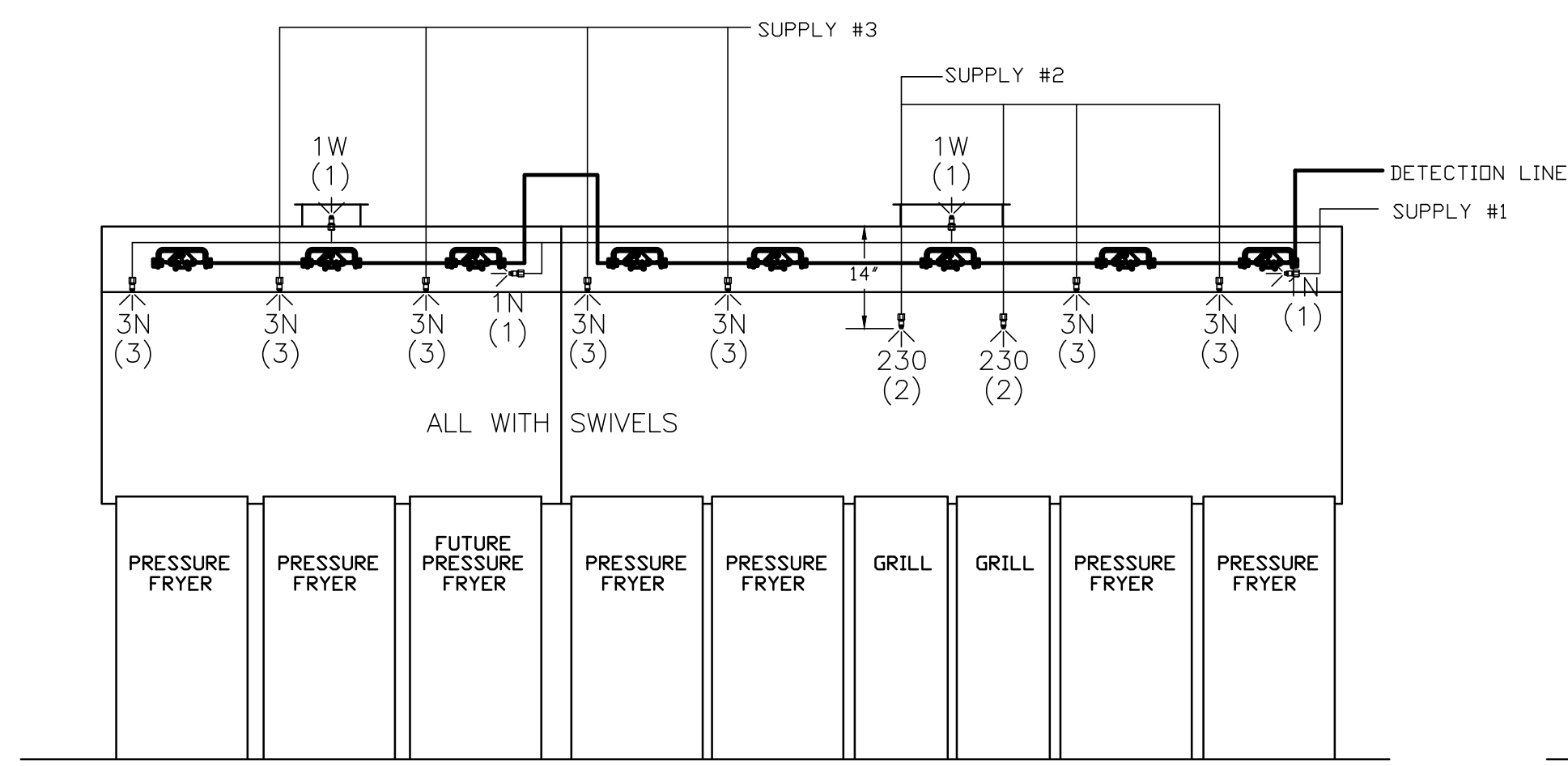
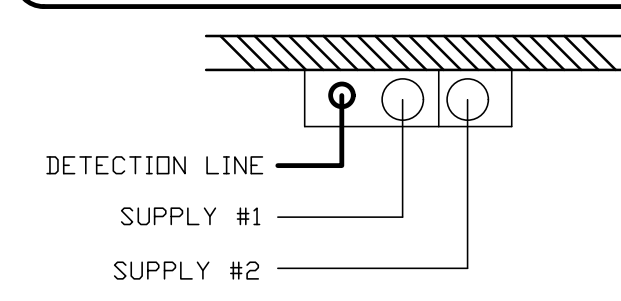


ANSUL R-102 FIRE SYSTEM
 A) 6 GALLON SYSTEM (2 TANKS)
 (REMOTE MOUNTED) (FOR HOOD H-2 & H-3)
 B) 3/8" BLACK IRON PIPING WITH 3/8" S.S.
 APPLIANCE DROPS

(1) REGULATED RELEASE
 (2) EXTRA MICRO SWITCH ASSEMBLIES
 (MOUNTED IN REG. REL.)
 (1) SINGLE TANK ENCLOSURE
 (2) 3 GALLON TANKS

****PROTECTS HOODS H-2 & H-3****

REMOTE MOUNTED:
 (1) REGULATED RELEASE (WITH ONE TANK)
 (1) SINGLE TANK ENCLOSURE (WITH ONE TANK)



ANSUL R-102 FIRE SYSTEM LAYOUT

ITEM	PART #	QTY	DESCRIPTION	FLOW PTS (TOTAL)
1W	10023	4	DUCT NOZZLES	4
1N	10022	4	PLENUM NOZZLES	4
230	10025	2	APPLIANCE NOZZLES	4
3N	10021	11	APPLIANCE NOZZLES	33
TOTAL FLOW POINTS				45

ITEM	QTY	DESCRIPTION
#200	10035	8 SERIES DETECTORS W/ FUSIBLE LINKS
#201	11973	2 TERMINAL DETECTORS W/ FUSIBLE LINKS
#202	10046	1 DEM REGULATED RELEASE W/ DOUBLE POLE MICRO SWITCH
#202	10033	1 REGULATED RELEASE W/ DOUBLE POLE MICRO SWITCH
#203	10333	5 3 GALLON TANKS
#204	10044	1 SINGLE TANK ENCLOSURE
#205	10047	1 DOUBLE TANK ENCLOSURE
#206	10040	3 REMOTE PULL STATION
#207	10064	2 SINGLE TANK NITROGEN CARTRIDGE
#208	10065	2 DOUBLE TANK NITROGEN CARTRIDGE
#209	11128	5 3 GALLON ANSULEX CONTAINER

ANSUL R-102 FIRE SYSTEM
 UL LISTED PER STD LATEST STD 300

- FINAL INSTALLATION IS TO BE MADE IN ACCORDANCE WITH ALL APPLICABLE CODES
- ALL ELECTRICAL COMPONENTS FOR EQUIPMENT SHUT DOWN TO BE PROVIDED BY THE ELECTRICIAN. MICRO-SWITCH INSTALLED IN REGULATED RELEASE BY ANSUL INSTALLER
- REMOTE PULL STATION LOCATED PER MECHANICAL DRAWINGS

THIS DRAWING MUST BE CHECKED, SIGNED AND RETURNED TO THE APPROPRIATE FACTORY. PLEASE VERIFYING THE FOLLOWING:

- ALL DIMENSIONAL INFORMATION, MOUNTING POSITIONS AND CLEARANCES.
- THE LOCATION AND TYPE OF COOKING EQUIPMENT.

NOTE TO APPROVER
 1. REVISE AND RESUBMIT
 2. WITH NO CHANGES
 3. APPROVED FOR FABRICATION
 4. WITH CHANGES AS NOTED

APPROVED BY: _____ DATE: _____

MAIL APPROVED DRAWINGS TO APPROPRIATE FACTORY BELOW:

HALTON CO. (CANADA) 1021 BREWIK PLACE MISSISSAUGA, ON L4W 3R7 1-905-624-0301	HALTON CO. (USA) 101 INDUSTRIAL DRIVE SCOTTSDALE, KY 42164 1-270-237-5800
---	--

WEBSITE: WWW.HALTON.COM

REV.	DESCRIPTION	DATE
1	REVISED H-3 & ANSUL FOR ALL HOODS	AF 06.14.20
2	REVISED ITEM LIST	SKM 02.14.20
3	CHANGED TO 63-107-42-42 HOODS	SKM 03.07.23
4		
5		
6		
7		

PROJECT: CHICK-FIL-A #2182
 BENCHWOOD FSU
 DAYTON, OH

LOCATION: DAYTON, OH
 DATE: 11.24.20

DRAWN BY: AF
 SCALE: NTS

Halton Dwg: U20-879-02

Halton
CARE FOR INDOOR AIR

Sheet **MHI.2**

I. SECTION C15000 - MECHANICAL SPECIFICATIONS

PART I - GENERAL

- 1.01 SCOPE
- A. IT IS THE RESPONSIBILITY OF CONTRACTOR TO READ ALL SPECIFICATIONS AND CONSULT ALL DRAWINGS WHICH MAY AFFECT THE INSTALLATION AND COORDINATION OF HIS WORK WITH OTHER TRADES. CONTRACTOR SHALL COORDINATE AND MAKE MINOR ADJUSTMENTS IN LOCATION OF EQUIPMENT AND MATERIALS AS NECESSARY TO SECURE COORDINATION.
- B. COMPLETED INSTALLATION SHALL CONFORM TO ALL APPLICABLE FEDERAL, STATE AND LOCAL CODES AND ORDINANCES, INCLUDING BUT NOT LIMITED TO THE LATEST APPROVED EDITIONS OF NFPA 96, NFPA 90A, NFPA 54, SMACNA, ASHRAE 90.1 AND ASHRAE 62.
- C. SYSTEM LAYOUT IS SCHEMATIC AND EXACT LOCATIONS SHALL BE DETERMINED BY STRUCTURAL CONDITIONS, COORDINATION WITH OTHER TRADES, COORDINATION WITH FINISHES AND OTHER CONDITIONS. STRUCTURAL SUPPORTS SHALL NOT BE CUT OR ALTERED TO ASSURE FIT OF HVAC SYSTEM. TEN FOOT CLEARANCE SHALL BE MAINTAINED BETWEEN OUTSIDE AIR INTAKES AND EXHAUST FANS AND PLUMBING VENT TERMINALS.
- D. CONTRACTOR SHALL BE RESPONSIBLE FOR ALL DEFECTS, REPAIRS AND REPLACEMENTS IN MATERIALS AND WORKMANSHIP FOR A PERIOD OF ONE (1) YEAR AFTER FINAL PAYMENT IS APPROVED. CONTRACTOR SHALL HONOR FACTORY WARRANTIES ON ALL EQUIPMENT PROVIDED AS PART OF THIS SYSTEM.
- E. UPON COMPLETION OF PROJECT, ALL SYSTEM EQUIPMENT AND MATERIALS SHALL BE IN NEW, CLEAN CONDITION WITH ALL DAMAGE RESTORED TO CONDITION ACCEPTABLE TO THE OWNERS REPRESENTATIVE. ALL EQUIPMENT, COMPONENTS AND DUCTWORK SHALL BE INSPECTED AND THOROUGHLY CLEANED, READY FOR USE. AT COMPLETION OF JOB, ALL MISCELLANEOUS TOOLS, SCAFFOLDING, SURPLUS MATERIALS, RUBBISH AND DEBRIS SHALL BE REMOVED BY CONTRACTOR.
- F. CONTRACTOR SHALL PROVIDE TWO SETS OF 2" MERV 8 OR HIGHER THROW AWAY TYPE FILTERS. A CLEAN SET SHALL BE PROVIDED PRIOR TO TEST AND BALANCE AND AGAIN PRIOR TO OPENING.

PART II - PRODUCTS

- 2.01 HEATING AND COOLING EQUIPMENT (C15730)
- A. FURNISH AND INSTALL R-410A ROOFTOP SINGLE PACKAGE COMBINATION ELECTRIC COOLING AND ELECTRIC HEATING UNITS BY LENNOX AS SHOWN ON DRAWINGS. EQUIPMENT SHALL BE ARI CERTIFIED AND U.L. LISTED.
- B. ACCESSORIES SHALL INCLUDE LOW AND HIGH PRESSURE SAFETIES, CRANK CASE HEATER, OVERCURRENT AND OVERTEMPERATURE SAFETY, COMPRESSOR VIBRATION ISOLATORS, FILTER DRIERS, REFRIGERANT SERVICE VALVES, COIL HALL GUARDS WHERE SCHEDULED, CONVENIENCE OUTLETS FACTORY INSTALLED ON SCHEDULED UNITS, UNIT MOUNTED NON-FUSED DISCONNECTS, LOW AMBIENT OPERATION DOWN TO 30 DEGREES F AND EVAPORATOR FREEZE STAT.
- C. COMPRESSORS SHALL BE FULLY HERMETIC SCROLL TYPE WITH INTERNAL VIBRATION ISOLATORS. COMPRESSORS SHALL BE PROVIDED WITH A MINIMUM FIVE (5) YEAR FULL WARRANTY.
- D. THE UNIT HEATING ELEMENTS SHALL BE BARE NICHROME WIRE EXPOSED TO THE AIR STREAM. HEATING CONTROLS SHALL INCLUDE TIME DELAY THAT SHALL BRING ELEMENTS ON AND OFF IN SEQUENCE WITH TIME DELAY BETWEEN EACH ELEMENT. HEATING SHALL BE PROVIDED IN TWO STAGES. LIMIT CONTROL SHALL PROVIDE OVERLOAD AND SHORT CIRCUIT PROTECTION. HEATER SHALL HAVE A ONE (1) YEAR WARRANTY.
- E. CHICK-FIL-A MAINTAINS A NATIONAL ACCOUNT FOR EQUIPMENT WITH LENNOX CORPORATION. PRICING FOR THE EQUIPMENT HAS BEEN ESTABLISHED IN ADVANCE. CONTACT LENNOX NATIONAL ACCOUNTS AT 972-497-6260 (OR BY FAX AT 972-497-5112) FOR PRICING, ORDERING AND AVAILABILITY.

2.02 DUCTWORK (C15735) (SEE DWG M2.1 FOR ADDITIONAL GREASE DUCT SYSTEM REQ.)

- A. ACCEPTABLE MANUFACTURERS OF INSULATION ARE MANVILLE, OWENS CORNING OR KNAUF.
- B. ALL DUCTWORK SHALL BE SHEET METAL, UNLESS NOTED OTHERWISE (U.N.O.).
- C. DUCT DIMENSIONS SHOWN ARE INSIDE CLEAR DIMENSIONS, U.N.O.
- D. CONSTRUCTION OF DUCTWORK SHALL MEET SMACNA 1" W.C. PRESSURE CLASS STANDARD AND RECOMMENDATIONS. SMACNA SHALL BE FOLLOWED WITH RESPECT TO GAGE THICKNESS, JOINTS, REINFORCING, CONSTRUCTION, INSTALLATION AND SUPPORT FOR PRESSURE CLASS STATED. ALL TRANSVERSE JOINTS IN RECTANGULAR AND ROUND DUCT SHALL BE SEALED PER SMACNA SEAL CLASS C WITH U.L. DUCT MASTIC SEALANT APPROVED FOR INTENDED USE. DUCT TAPE IS NOT AN ACCEPTABLE SUBSTITUTE FOR MASTIC UNLESS EQUAL TO HARDCAST FOIL-GRIP 1402 BUTYL RUBBER ADHESIVE TAPE.
- E. ALL DUCT INSULATION SHALL MEET MINIMUM R-VALUE REQUIRED BY ASHRAE 90.1 LATEST EDITION. ALL DUCT WRAP SHALL BE MINIMUM 2" THICK, 3/4 PCF AND 5.6 R-VALUE INSTALLED WITH EITHER A VAPOR BARRIER WITH MAXIMUM PERMEANCE 0.05 OR A MINIMUM 2 MIL ALUMINUM REINFORCED FOIL/KRAFT FACING.
- F. ALL DUCT DROPS FROM THE ROOFTOP UNITS SHALL BE EXTERNALLY INSULATED.
- G. SUPPLY AND RETURN AIR DUCTWORK SERVING ALL AREAS SHALL BE EXTERNALLY INSULATED.
- H. ALL AIR CONVEYANCE COMPONENTS SUCH AS, BUT NOT LIMITED TO DUCT, DUCT PLENUMS, GRILLES/DIFFUSERS, BACK PANS, AND BOOTS SHALL BE INSULATED. INSULATION TYPE IS COVERED ELSEWHERE IN THIS SPECIFICATION.
- I. RESTROOM RECTANGULAR EXHAUST AIR DUCTWORK SHALL BE LINED WITH 1" THICK, 1-1/2 PCF INSULATION.
- J. TRUNK DUCTS SHALL BE ISOLATED FROM UNIT VIBRATION WITH THE USE OF NFPA AND U.L. APPROVED FLEXIBLE CONNECTORS INSTALLED AT THE TOP OF BOTH SUPPLY AND RETURN DROPS.
- K. INSULATED FLEXIBLE DUCT MAY BE UTILIZED FOR RUNOUTS TO GRILLES AND DIFFUSERS ONLY IN THE HORIZONTAL POSITION AND IN MAXIMUM LENGTHS OF 4'-0", NO EXCEPTIONS. SEE TAKE-OFF DETAIL ON DRAWING M3.1.
- L. CONSTRUCTION OF FLEXIBLE DUCTWORK SHALL INCLUDE SPIRAL METAL HELIX BONDED TO A POLYESTER CORE, FIBERGLASS INSULATION WITH POLYETHYLENE OR MYLAR VAPOR BARRIER. ALL COMPONENTS SHALL HAVE APPROPRIATE U.L. APPROVAL AND SHALL BE EQUIVALENT TO THERMAFLEX MKE.
- M. FLEXIBLE DUCT SHALL BE INSTALLED PER THE "ADC FLEXIBLE DUCT PERFORMANCE AND INSTALLATION STANDARDS, 4TH ED" USING FOIL TAPE AND DRAWBAND ON THE INNER CORE AND TAPE OR DRAWBAND ON THE OUTER JACKET.
- N. DUCT TAPE SHALL BE EQUAL TO FASSON 181-B FX, 2-1/2" WIDE.
- O. SINGLE THICKNESS TURNING VANES SHALL BE INSTALLED AT 90 DEGREE TURNS IN SUPPLY DUCTWORK WHERE ANY ONE DIMENSION IS GREATER THAN 12".
- P. RADIUSSED ELBOWS MAY BE SUBSTITUTED FOR 90 DEGREE ELBOWS AT THE DISCRETION OF THE CONTRACTOR. CENTERLINE RADIUS EQUAL TO: R=W PER FIGURE NO. 2-2 IN SMACNA HVAC DUCT CONSTRUCTION STANDARDS.
- Q. EXTERNAL INSULATION ON BOTTOM OF DUCTS 24" OR WIDER SHALL BE SUPPORTED WITH STICK PINS ON 18" CENTERS. STICK PIN WASHERS SHALL BE COVERED WITH DUCT TAPE OR MASTIC.

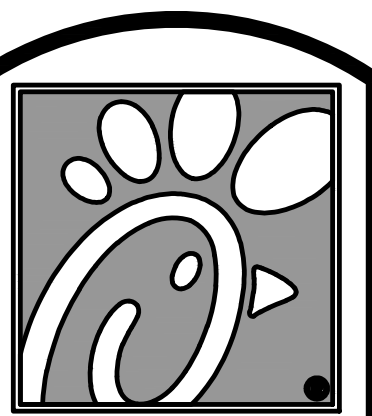
2.03 CONTROLS (C15735)

- A. SYSTEMS SHALL BE COMPLETE WITH CONNECTIONS TO EXISTING CFA-500 TEMPERATURE CONTROL PANEL AS MANUFACTURED BY SUNCOAST ENVIRONMENTAL CONTROLS (S.E.C.) (PH: 877-544-6679). CONTROL WIRING TERMINATIONS ARE BY THE MECHANICAL CONTRACTOR.
- B. THE SMOKE DETECTORS SHALL BE FACTORY INSTALLED AND WIRED BY THE ROOFTOP UNIT MANUFACTURER.
- C. A FACTORY INSTALLED SMOKE DETECTOR IN THE RETURN AIR SECTION OF EACH AIR CONDITIONING UNIT SHALL STOP THE INDOOR FAN AND CLOSE THE OUTSIDE AIR DAMPER IN THE EVENT OF EXCESSIVE TEMPERATURE OR SMOKE. SMOKE DETECTOR SHALL BE LOCATED PRIOR TO ANY EXHAUST FROM THE BUILDING OR MIXING WITH FRESH AIR MAKE-UP. UPON DETECTION, THE SYSTEM SHALL NOT RESTART UNTIL THE DEVICE IS MANUALLY RESET. DEVICES SHALL BE LOCATED WHERE THEY CAN BE EASILY ACCESSED AND WHERE CLEAR OF FILTERS.
- D. CHICK-FIL-A HAS A NATIONAL ACCOUNT WITH SUNCOAST ENVIRONMENTAL CONTROLS FOR THE SMOKE DETECTOR TEST/RESET ANNUNCIATOR STATIONS. THE TEST/RESET STATIONS WILL BE PURCHASED AND INSTALLED BY THE MECHANICAL CONTRACTOR AS A PART OF A NATIONAL ACCOUNT PACKAGE.
- E. THE REMOTE TEST/RESET ANNUNCIATORS SHALL BE PROVIDED AND INSTALLED BY THE MECHANICAL CONTRACTOR. INSTALLATION BY MECHANICAL SHALL INCLUDE MOUNTING OF THE ANNUNCIATORS AND ALL WIRING FROM EACH DEVICE TO THE RTU OR AHU. PROVIDE A JUNCTION BOX IN THE WALL WITH 1/2" CONDUIT STUBBED UP ABOVE THE CEILING FOR EACH REMOTE TEST STATION. ANNUNCIATOR SHALL BE SUNCOAST CONTROLS REMOTE TEST/RESET STATION WITH POWER LED, TROUBLE LED, ALARM LED, 90DB HORN AND TEST/RESET BUTTON.
- F. THE RESTROOM FAN SHALL BE INTERLOCKED TO THE LIGHTS SERVING THE MEN AND WOMEN'S RESTROOMS. THE HOOD FANS SHALL BE CONTROLLED VIA THE SUNCOAST CFA-500 CONTROL PANEL. WIRING, RELAYS AND SWITCHES FOR CONTROL OF ALL FANS ARE BY ELECTRICAL CONTRACTOR.
- G. LENNOX UNITS - THERMOSTATS ARE PROVIDED AND INTEGRATED INTO THE TEMPERATURE CONTROL PANEL BY SUNCOAST ENVIRONMENTAL CONTROLS. SUNCOAST WILL PROVIDE A NETWORK THERMOSTAT US32-CFA TSTAT PRE-WIRED IN THE TEMPERATURE CONTROL PANEL. A REMOTE TEMPERATURE SENSOR FOR EACH THERMOSTAT IS ALSO PROVIDED. SOME UNITS MAY HAVE MORE THAN ONE SENSOR. MECHANICAL CONTRACTOR SHALL INSTALL ALL WIRING BETWEEN THE THERMOSTAT, THE REMOTE SENSOR AND THE ROOFTOP UNIT OR AHU.
- H. MECHANICAL CONTRACTOR SHALL INSTALL CONTROL WIRING IN 1/2" CONDUIT WHERE REQUIRED BY CODE. WHERE NOT REQUIRED TO BE IN CONDUIT, ALL WIRING SHALL BE RUN PARALLEL TO STRUCTURAL MEMBERS OR PERPENDICULAR WITH NO DIAGONAL ROUTING. ALL WIRING SHALL BE SECURED TO THE FRAMING TO PREVENT SAGGING IN RUNS. WIRING TO ROOFTOP UNITS SHALL BE ROUTED THROUGH THE FACTORY THRU-BASE FITTING IN THE UNIT BASE. NO SPLICING OF WIRING WILL BE ACCEPTED. ALL WIRING ABOVE THE ROOF SHALL BE INSTALLED IN EXTERIOR GRADE FLEXIBLE CONDUIT. ALL CONTROL WIRING AND CONTROL WIRING CONDUIT SHALL BE FURNISHED AND INSTALLED BY THE MECHANICAL CONTRACTOR. WIRING SHALL BE INSTALLED IN ACCORDANCE WITH LATEST EDITION OF NEC. ALL LOW VOLTAGE CONTROL WIRING SHALL BE NO LESS THAN 18 AWG MIN. CONTROL WIRING CONDUCTORS SHALL BE SIZED TO ACCOUNT FOR LOAD AND LENGTH OF RUN TO ALLOW SUFFICIENT VOLTAGE AVAILABLE AT CONTROLLED DEVICE TO OPERATE THE SYSTEM RELIABLY.

PART III - EXECUTION

- 3.01 SCOPE
- A. FURNISH AND INSTALL SYSTEM IN ACCORDANCE WITH REFERENCED STANDARDS, APPLICABLE CODES, MANUFACTURER'S RECOMMENDATIONS AND AS INDICATED ON DRAWINGS.
- B. OWNER SHALL TEST AND BALANCE MECHANICAL SYSTEM IN ACCORDANCE WITH NCI OR AABC STANDARDS TO ASSURE CONFORMANCE WITH DESIGN. G.C. WILL MAKE MECHANICAL CONTRACTOR AVAILABLE DURING TEST AND BALANCE TO ASSIST TESTING AGENCY AND TO MAKE CORRECTIONS IMMEDIATELY NECESSARY. CONTRACTOR SHALL CORRECT ITEMS ON WRITTEN TEST AND BALANCE REPORT.
- C. CONTRACTOR SHALL INSTRUCT THE OWNER'S REPRESENTATIVE IN ALL MATTERS PERTAINING TO THE PROPER MAINTENANCE OF EQUIPMENT FURNISHED UNDER THIS CONTRACT THROUGH DEMONSTRATION AND EXPLANATION OF OPERATING & MAINTENANCE MANUALS.
- D. CONTRACTOR SHALL PROVIDE A "SAMPLE MAINTENANCE PROPOSAL" TO THE OWNER'S REPRESENTATIVE IN ALL MATTERS PERTAINING TO THE PROPER MAINTENANCE OF EQUIPMENT FURNISHED UNDER THIS CONTRACT.
- E. CONTRACTOR SHALL COMPLETE A/C EQUIPMENT STARTUP DOCUMENTATION PROVIDED BY OWNER.

NATIONAL ACCOUNTS			
1.	LENNOX EQUIPMENT - CONTACT LENNOX NATIONAL ACCOUNTS AT 800-367-6285 (OR BY FAX AT 972-497-5112) FOR PRICING, ORDERING AND AVAILABILITY. LENNOX EQUIPMENT NOT PURCHASED THRU LENNOX NATIONAL ACCOUNTS WILL NOT BE ACCEPTED.	6.	ROYAL METAL PRODUCTS START COLLARS - THE MECHANICAL CONTRACTOR IS REQUIRED TO PURCHASE THE START COLLARS DIRECTLY FROM TOM BARROW COMPANY. CONTACT MR. SCOTT GEORGE AT 404-351-1010 FOR PRICING AND AVAILABILITY. START COLLARS NOT PURCHASED THRU TOM BARROW COMPANY WILL NOT BE ACCEPTED.
2.	LOREN COOK FAN AND CURB PACKAGE - THE MECHANICAL CONTRACTOR IS REQUIRED TO PURCHASE THE FAN/CURB PACKAGE DIRECTLY FROM TOM BARROW COMPANY. CONTACT MR. SCOTT GEORGE AT 404-351-1010 FOR PRICING AND AVAILABILITY. FANS AND CURBS NOT PURCHASED THRU TOM BARROW COMPANY WILL NOT BE ACCEPTED.	7.	SCHWANK INFRARED HEATER PACKAGE - THE MECHANICAL CONTRACTOR IS REQUIRED TO PURCHASE THE HEATER PACKAGE DIRECTLY FROM TOM BARROW COMPANY. CONTACT MR. SCOTT GEORGE AT 404-351-1010 FOR PRICING AND AVAILABILITY. HEATERS NOT PURCHASED THRU TOM BARROW COMPANY WILL NOT BE ACCEPTED.
3.	PRICE AIR DEVICES - THE MECHANICAL CONTRACTOR IS REQUIRED TO PURCHASE THE AIR DEVICES DIRECTLY FROM TOM BARROW COMPANY. CONTACT MR. SCOTT GEORGE AT 404-351-1010 FOR PRICING AND AVAILABILITY. AIR DEVICES NOT PURCHASED THRU TOM BARROW COMPANY WILL NOT BE ACCEPTED.	8.	CIRCULATING FAN PACKAGE - THE MECHANICAL CONTRACTOR IS REQUIRED TO PURCHASE THE FAN PACKAGE DIRECTLY FROM TOM BARROW COMPANY. CONTACT MR. SCOTT GEORGE AT 404-351-1010 FOR PRICING AND AVAILABILITY. FANS NOT PURCHASED THRU TOM BARROW COMPANY WILL NOT BE ACCEPTED.
4.	AIR DOORS - THE MECHANICAL CONTRACTOR IS REQUIRED TO PURCHASE THE AIR DOORS DIRECTLY FROM TOM BARROW COMPANY. CONTACT MR. SCOTT GEORGE AT 404-351-1010 FOR PRICING AND AVAILABILITY. AIR DOORS NOT PURCHASED THRU TOM BARROW COMPANY WILL NOT BE ACCEPTED.	9.	BROMIC ELECTRIC HEATER PACKAGE - THE MECHANICAL CONTRACTOR IS REQUIRED TO PURCHASE THE HEATER DIRECTLY FROM BROMIC COMPANY. CONTACT BLAKE RUSSIE AT 858-381-4850 FOR PRICING AND AVAILABILITY. HEATERS NOT PURCHASED THRU BROMIC COMPANY WILL NOT BE ACCEPTED.
5.	HALTON HOODS - CHICK-FIL-A WILL PURCHASE AND PROVIDE THE HOODS FOR INSTALLATION BY THE MECHANICAL CONTRACTOR. THE MECHANICAL CONTRACTOR SHALL BE RESPONSIBLE FOR RECEIVING THE HOODS. CONTACT HALTON CO. AT 270-237-5600 FOR MORE INFO.		



5200 Buffington Rd.
Atlanta Georgia,
30349-2998

Revisions:

Mark Date By
1 08.09.22
PERMIT ISSUE
- REVISIONS

Mark Date By
2 09.22.22
PERMIT REVISIONS

Mark Date By
3 10.28.22
PERMIT REVISIONS

Mark Date By
4 01.31.23
ISSUE FOR
CONSTRUCTION



Kurzynske & Associates
CONSULTING ENGINEERS
2900 Lebanon Pike, Ste. 201
Nashville, Tennessee 37214
Telephone: (615) 255-5203
Fax: (615) 255-5207
Email: mail@kurzynske.com

STORE #02182
BENCHWOOD

3339 BENCHWOOD RD.
DAYTON, OH 45414

SHEET TITLE
MECHANICAL
SPECIFICATIONS

VERSION: S06C-R
ISSUE DATE: 6.28.2022

Job No. : 20133.CD.R
Store : #2182
Date : 6.28.22
Drawn By : DSF
Checked By : MK

Sheet

M7.I

FOR CONSTRUCTION

COMcheck Software Version 4.1.5.1 Envelope Compliance Certificate

Project Information

Energy Code: 2012 IECC
 Project Title: Chick-fil-A #2182
 Location: Dayton, Ohio
 Climate Zone: 5a
 Project Type: Addition

Construction Site: 3339 Benchwood Rd, Dayton, OH 45414
 Owner/Agent: Chick-fil-A, 5200 Buffington Road, Atlanta, GA 30349
 Designer/Contractor: Kurzynske & Associates, 2705 Lebanon Pike - Suite One, Nashville, TN 37214, 615-295-5203

Building Area	Floor Area
1-Storage (Dining: cafeteria/fast food) : Nonresidential	578

Envelope Assemblies	Assembly	Gross Area or Perimeter	Cavity R-Value	Cont. R-Value	Proposed U-Factor	Budget U-Factor ^(a)
Roof 1: Insulation Entirely Above Deck: High Albedo Roof Required, (Bldg. Use 1 - Storage)		578	---	30.0	0.032	0.039
WALL 1: Slab-On-Grade/Unheated, Vertical 2 ft., (Bldg. Use 1 - Storage)(b)		112	---	10.0	0.540	0.540
NORTH Exterior Wall 2: Wood-Frame, 16" o.c., (Bldg. Use 1 - Storage)		723	20.0	0.0	0.064	0.064
Door 1: Associated Metal, Swinging, (Bldg. Use 1 - Storage)		28	---	---	0.330	0.370
EAST Exterior Wall 3: Wood-Frame, 16" o.c., (Bldg. Use 1 - Storage)		230	20.0	0.0	0.064	0.064
WEST Exterior Wall 1: Wood-Frame, 16" o.c., (Bldg. Use 1 - Storage)		230	20.0	0.0	0.064	0.064

(a) Budget U-factors are used for software budgeting calculations ONLY, and are not code requirements.
 (b) Slab-On-Grade proposed and budget U-factors shown in table are F-factors.

Envelope PASSES: Design 2% better than code

Envelope Compliance Statement
 Compliance Statement: The proposed envelope design represented in this document is consistent with the building plans, specifications, and other calculations submitted with this permit application. The proposed envelope systems have been designed to meet the 2012 IECC requirements in COMcheck Version 4.1.5.1 and to comply with any applicable mandatory requirements listed in the Inspection Checklist.

Name - Title _____ Signature _____ Date _____

COMcheck Software Version 4.1.5.1 Mechanical Compliance Certificate

Project Information

Energy Code: 2012 IECC
 Project Title: Chick-fil-A #2182
 Location: Dayton, Ohio
 Climate Zone: 5a
 Project Type: Addition

Construction Site: 3339 Benchwood Rd, Dayton, OH 45414
 Owner/Agent: Chick-fil-A, 5200 Buffington Road, Atlanta, GA 30349
 Designer/Contractor: Kurzynske & Associates, 2705 Lebanon Pike - Suite One, Nashville, TN 37214, 615-295-5203

Mechanical Systems List

Quantity	System Type & Description
1	AC#1 (25 ton) (Single Zone): Heating: 1 each - Central Furnace, Gas, Capacity = 384 kBtu/h Proposed Efficiency = 80.00% Et, Required Efficiency: 80.00 % Et Cooling: 1 each - Single Package DX Unit, Capacity = 263 kBtu/h, Air-Cooled Condenser, Air Economizer Proposed Efficiency = 10.50 EER, Required Efficiency: 9.80 EER + 9.9 IEER Fan System: AC#1 Kitchen - Compliance (Motor nameplate HP method) - Passes Fans: Supply Supply, Constant Volume, 8500 CFM, 7.5 motor nameplate hp Exhaust Exhaust, Constant Volume, 2000 CFM, 0.7 motor nameplate hp
1	AC#2 (8.5 ton) (Single Zone): Heating: 1 each - Central Furnace, Gas, Capacity = 192 kBtu/h Proposed Efficiency = 80.00% Et, Required Efficiency: 80.00 % Et (or 78% AFUE) Cooling: 1 each - Single Package DX Unit, Capacity = 100 kBtu/h, Air-Cooled Condenser, Air Economizer Proposed Efficiency = 12.20 EER, Required Efficiency: 11.00 EER + 11.2 IEER Fan System: AC#2 Dining - Compliance (Motor nameplate HP method) - Passes Fans: Supply Supply, Constant Volume, 2830 CFM, 2.0 motor nameplate hp Exhaust Exhaust, Constant Volume, 750 CFM, 0.3 motor nameplate hp
1	AC#3 (10 ton) (Single Zone): Heating: 1 each - Central Furnace, Gas, Capacity = 192 kBtu/h Proposed Efficiency = 80.00% Et, Required Efficiency: 80.00 % Et (or 78% AFUE) Cooling: 1 each - Single Package DX Unit, Capacity = 124 kBtu/h, Air-Cooled Condenser, Air Economizer Proposed Efficiency = 12.00 EER, Required Efficiency: 11.00 EER + 11.2 IEER Fan System: AC#3 Dining - Compliance (Motor nameplate HP method) - Passes Fans: Supply Supply, Constant Volume, 4000 CFM, 3.0 motor nameplate hp Exhaust Exhaust, Constant Volume, 1000 CFM, 0.3 motor nameplate hp
1	AC#4 (7.5 ton) (Single Zone): Heating: 1 each - Central Furnace, Gas, Capacity = 192 kBtu/h Proposed Efficiency = 80.00% Et, Required Efficiency: 80.00 % Et (or 78% AFUE) Cooling: 1 each - Single Package DX Unit, Capacity = 91 kBtu/h, Air-Cooled Condenser, Air Economizer Proposed Efficiency = 12.50 EER, Required Efficiency: 11.00 EER + 11.2 IEER Fan System: AC#4 Dining - Compliance (Motor nameplate HP method) - Passes

Quantity, System Type & Description

Fans:
 Supply Supply, Constant Volume, 2765 CFM, 2.0 motor nameplate hp
 Exhaust Exhaust, Constant Volume, 600 CFM, 0.3 motor nameplate hp

1 AC#5 (Single Zone):
 Heating: 1 each - Central Furnace, Gas, Capacity = 120 kBtu/h
 Proposed Efficiency = 80.00% Et, Required Efficiency: 80.00 % Et (or 78% AFUE)
 Cooling: 1 each - Single Package DX Unit, Capacity = 62 kBtu/h, Air-Cooled Condenser, Air Economizer
 Proposed Efficiency = 17.19 SEER, Required Efficiency: 13.00 SEER
 Fan System: AC#5 | Dining - Compliance (Motor nameplate HP method) - Passes

Fans:
 Supply Supply, Constant Volume, 1800 CFM, 1.0 motor nameplate hp
 Exhaust Exhaust, Constant Volume, 300 CFM, 0.3 motor nameplate hp

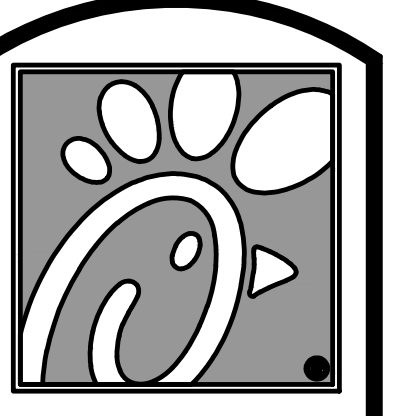
1 AHU#1 (Single Zone):
 Split System Heat Pump
 Heating Mode: Capacity = 40 kBtu/h,
 Proposed Efficiency = 10.00 HSPF, Required Efficiency = 7.70 HSPF
 Cooling Mode: Capacity = 34 kBtu/h, No Economizer, Economizer exception: None
 Proposed Efficiency = 16.20 SEER, Required Efficiency: 13.00 SEER
 Fan System: None
 SYSTEM COMPLIANCE FAILS: Economizer requirements have not been met.

6 GH (Infrared Heater) (Single Zone):
 Heating: 1 each - Radiant Heater, Gas, Capacity = 50 kBtu/h
 No minimum efficiency requirement applies
 Fan System: None

1 EH (Infrared Heater) (Single Zone):
 Heating: 1 each - Radiant Heater, Electric, Capacity = 20 kBtu/h
 No minimum efficiency requirement applies
 Fan System: None

Mechanical Compliance Statement
 Compliance Statement: The proposed mechanical design represented in this document is consistent with the building plans, specifications, and other calculations submitted with this permit application. The proposed mechanical systems have been designed to meet the 2012 IECC requirements in COMcheck Version 4.1.5.1 and to comply with any applicable mandatory requirements listed in the Inspection Checklist.

Name - Title _____ Signature _____ Date _____



Chick-fil-A

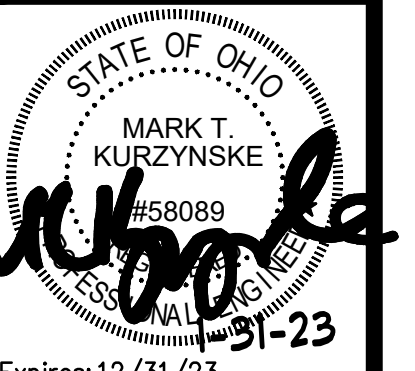
5200 Buffington Rd.
 Atlanta Georgia,
 30349-2998

Revisions:
 Mark Date By
 1 08.09.22
 PERMIT ISSUE
 - REVISIONS

Mark Date By
 2 09.22.22
 PERMIT REVISIONS

Mark Date By
 3 10.28.22
 PERMIT REVISIONS

Mark Date By
 4 01.31.23
 ISSUE FOR CONSTRUCTION



Kurzynske & Associates
 CONSULTING ENGINEERS
 2900 Lebanon Pike, Ste. 201
 Nashville, Tennessee 37214
 Telephone: (615) 255-5203
 Fax: (615) 255-5207
 Email: mail@kurzynske.com

STORE #02182
 BENCHWOOD
 3339 BENCHWOOD RD.
 DAYTON, OH 45414

SHEET TITLE:
 MECH &
 ENVELOPE
 COMCHECK

VERSION: S06C-R
 ISSUE DATE: 6.28.2022

Job No. : 20133.CD.R
 Store : #2182
 Date : 6.28.22
 Drawn By : DSF
 Checked By: MK

Sheet
M6.I

