

ISSUANCES

No.	Description	Date
1	BID AND PERMIT	2022.04.29

Drawn By

CRH

Checked By

TLA

Client Number

Project Number

6715

DRAWING TITLE

**MECHANICAL
DETAILS AND
SCHEDULES**

SHEET NO.

M300

REGISTERS, GRILLES, AND DIFFUSERS

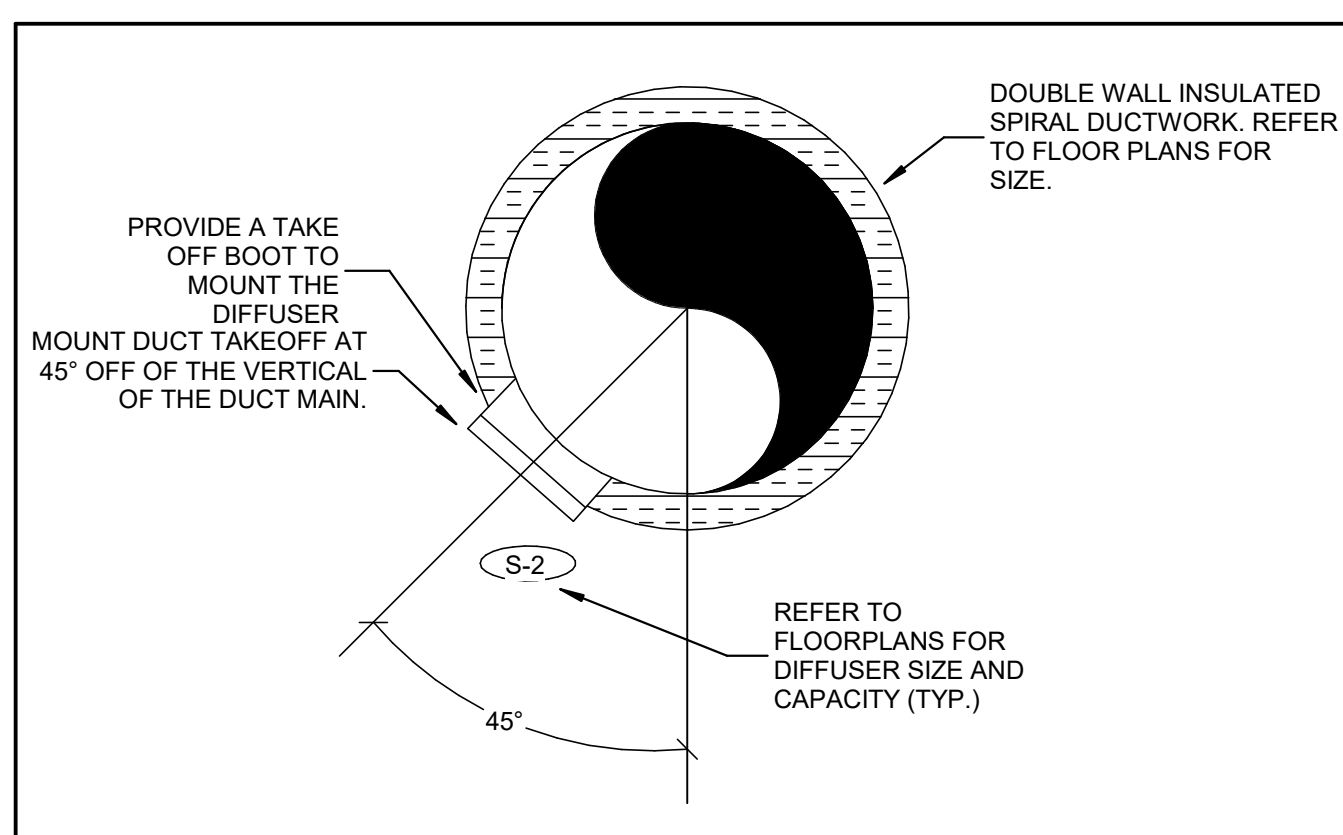
MARK	MANUFACTURER	MODEL #	TYPE	GRILLE SIZE	PANEL SIZE	DUCT INLET SIZE	DUCT BRANCH SIZE	MAX CFM	P.D.	NOISE CRITERIA	THROW PATTERN	REMARKS
R-1	PRICE	530	ALUMINUM LOUVERED GRILLE	24"X12"	22"X10"	NA	NA	100	0.05	25	NA	1
R-2	PRICE	530	ALUMINUM LOUVERED GRILLE	24"X24"	22"X22"	NA	NA	300	0.05	25	NA	1
R-3	PRICE	530	ALUMINUM LOUVERED GRILLE	8"X8"	8"X8"	8"X8"	8"X8"	250	0.05	25	NA	1
S-1	PRICE	ASPD	ALUMINUM SQUARE PLAQUE DIFFUSER	24"X24"	22"X22"	6"Ø	6"Ø	100	0.05	25	4-WAY	1
S-2	PRICE	SDG	SPIRAL DUCT GRILLE	10"X4"	NA	NA	NA	110	0.05	25	NA	1
S-3	PRICE	RPD	ROUND PLAQUE DIFFUSER	NA	NA	8"	8"	175	0.05	25	360°	1
S-4	PRICE	TDCA-AA	ALUMINUM ADJUSTABLE SQUARE DIFFUSER	12"X12"	12"X12"	6"Ø	6"Ø	100	0.05	25	4-WAY	1
S-5	PRICE	630	ALUMINUM LOUVERED GRILLE	8"X8"	8"X8"	8"X8"	8"X8"	200	0.05	25	4-WAY	1

REMARKS:
1. WHITE IN COLOR

WATER SOURCE HEAT PUMP SCHEDULE

MARK	MANUFACTURER	MODEL #	TYPE	NOM. CFM	ESP (IN WG.)	GPM	WATER PD (FT. H2O)	BLOWER MOTOR HP	COMPRESSORS	STAGES	WEIGHT (LB)	DIMENSIONS (IN)			ELECTRICAL				HEATING			COOLING					CONDENSATE PIPE SIZE	REMARKS					
												LENGTH	WIDTH	HEIGHT	VOLTAGE	HZ	PHASE	MCA	MOCp	HEATING CAPACITY (BTU/HR)	EAT (DB) (°F)	EWT (°F)	HEAT OF ABSORPTION (BTU/HR)	COP @ ARI	SENSIBLE CAPACITY (BTU/HR)	TOTAL CAPACITY (BTU/HR)			EAT (DB)	EAT (WB)	EWT (°F)	HEAT OF REJECTION	EER @ ARI (FULL/PARTIAL)
HP-0008	DAIKIN	WGCH012	HORIZONTAL	365	0.30	3	5.08	0.1	1	1	104	34	19	12	265	60	1	7 A	15	19034.0	70	90	15161.0	4.9	7935.0	11397.0	80	67	90	14887.0	11.1	3/4	1,2,3
HP-017	DAIKIN	WGDH024	HORIZONTAL	800	0.30	6	9.70	0.33	1	2	182	43	20	17	265	60	1	14 A	20	33976.0	70	90	26935.0	4.8	16514.0	23302.0	80	67	90	29190.0	13.5	3/4	1,2,3

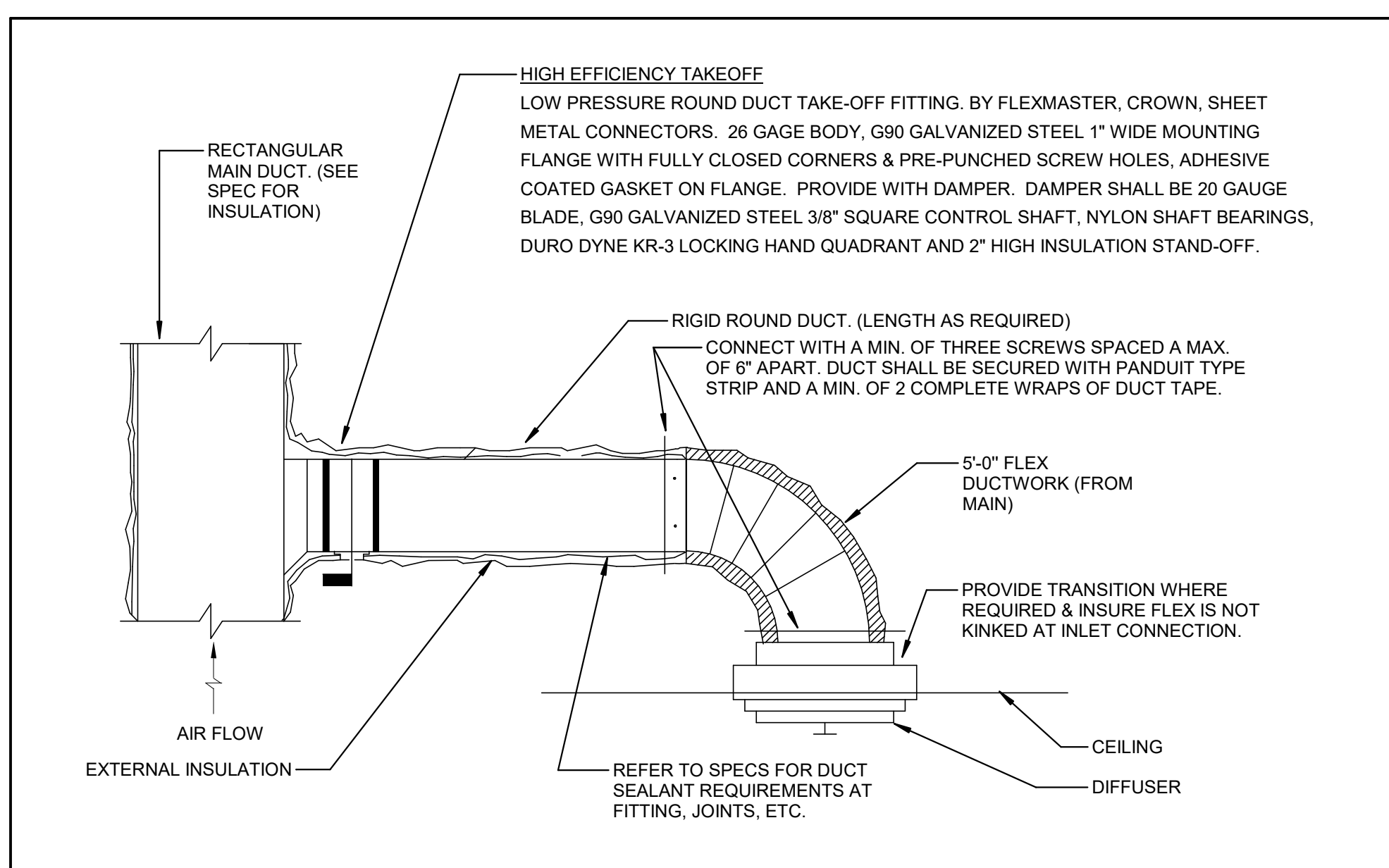
REMARKS:
1. PROVIDE WITH MANUFACTURER'S HOSE KIT SIZED PER PIPING RUNOUT SCHEDULE.
2. PROVIDE WITH STAINLESS STEEL DRAIN PAN AND CONDENSATE OVERFLOW SWITCH.
3. PROVIDE WITH SOUND BLANKET.



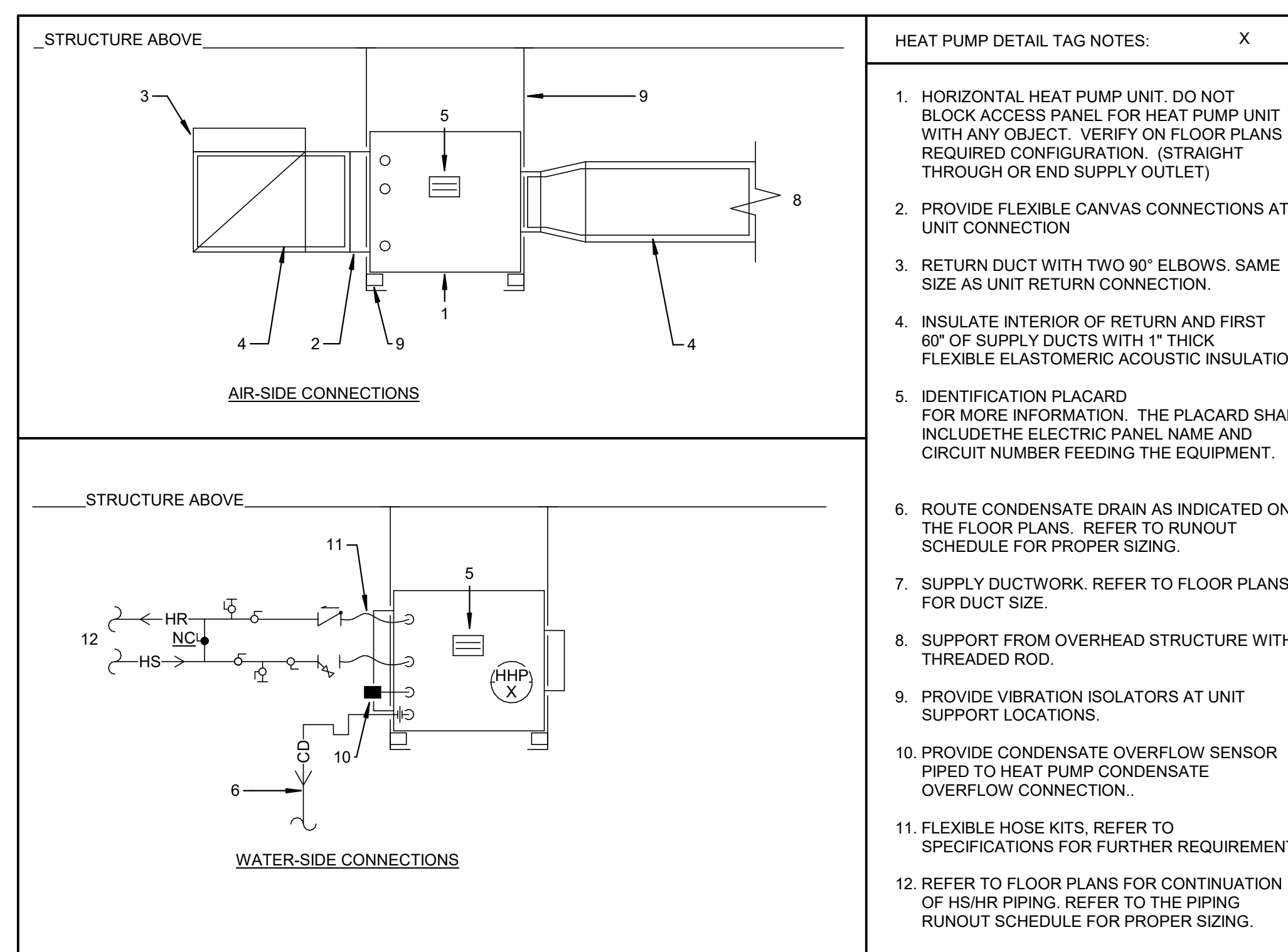
1 DUCT MOUNTED DIFFUSER DETAIL
M300 NOT TO SCALE

ASHRAE 62.1 VENTILATION CALCS

ROOM #	ROOM NAME	SPACE TYPE	AREA (SF)	PEOPLE	OA CFM REQ'D / PERSON	OA CFM REQ'D / SF	Ez	OA REQ'D (CFM)	EXHAUST REQUIREMENT (CFM/SF)	EA REQ'D (CFM)
17	GALLERY	CORRIDOR	646	0	5	0.06	1	39	0.0	0
017A	OFFICE	OFFICE SPACE	80	1	5	0.06	1	10	0.0	0
017B	DIGITAL CLASSROOM	CLASSROOM	414	13	10	0.12	1	180	0.0	0
017C	PAINTING/DRAWING/SKETCHING	ART CLASSROOM	355	13	10	0.18	1	194	0.7	249
21	CERAMICS	ART CLASSROOM	1096	16	10	0.18	1	357	0.7	767
024B	STORAGE	STORAGE ROOM	64	0	0	0	1	0	0.0	0
25	KILN	STORAGE ROOM	64	0	0	0	1	0	0.0	0



2 TYPICAL ROUND SUPPLY, RETURN, & EXHAUST BRANCH DUCT DETAIL
M300 NOT TO SCALE



3 HORIZONTAL WSHP INSTALLATION DETAIL
M300 NOT TO SCALE

HEAT PUMP DETAIL TAG NOTES: X

- HORIZONTAL HEAT PUMP UNIT. DO NOT BLOCK ACCESS PANEL FOR HEAT PUMP UNIT WITH ANY OBJECT. VERIFY ON FLOOR PLANS REQUIRED CONFIGURATION. (STRAIGHT THROUGH OR END SUPPLY OUTLET)
- PROVIDE FLEXIBLE CANVAS CONNECTIONS AT UNIT CONNECTION
- RETURN DUCT WITH TWO 90° ELBOWS. SAME SIZE AS UNIT RETURN CONNECTION.
- INSULATE INTERIOR OF RETURN AND FIRST 60" OF SUPPLY DUCTS WITH 1" THICK FLEXIBLE ELASTOMERIC ACOUSTIC INSULATION.
- IDENTIFICATION PLACARD FOR MORE INFORMATION. THE PLACARD SHALL INCLUDE THE ELECTRIC PANEL NAME AND CIRCUIT NUMBER FEEDING THE EQUIPMENT.
- ROUTE CONDENSATE DRAIN AS INDICATED ON THE FLOOR PLANS. REFER TO RUNOUT SCHEDULE FOR PROPER SIZING.
- SUPPLY DUCTWORK. REFER TO FLOOR PLANS FOR DUCT SIZE.
- SUPPORT FROM OVERHEAD STRUCTURE WITH THREADED ROD.
- PROVIDE VIBRATION ISOLATORS AT UNIT SUPPORT LOCATIONS.
- PROVIDE CONDENSATE OVERFLOW SENSOR PIPED TO HEAT PUMP CONDENSATE OVERFLOW CONNECTION..
- FLEXIBLE HOSE KITS, REFER TO SPECIFICATIONS FOR FURTHER REQUIREMENTS.
- REFER TO FLOOR PLANS FOR CONTINUATION OF HS/HR PIPING. REFER TO THE PIPING RUNOUT SCHEDULE FOR PROPER SIZING.