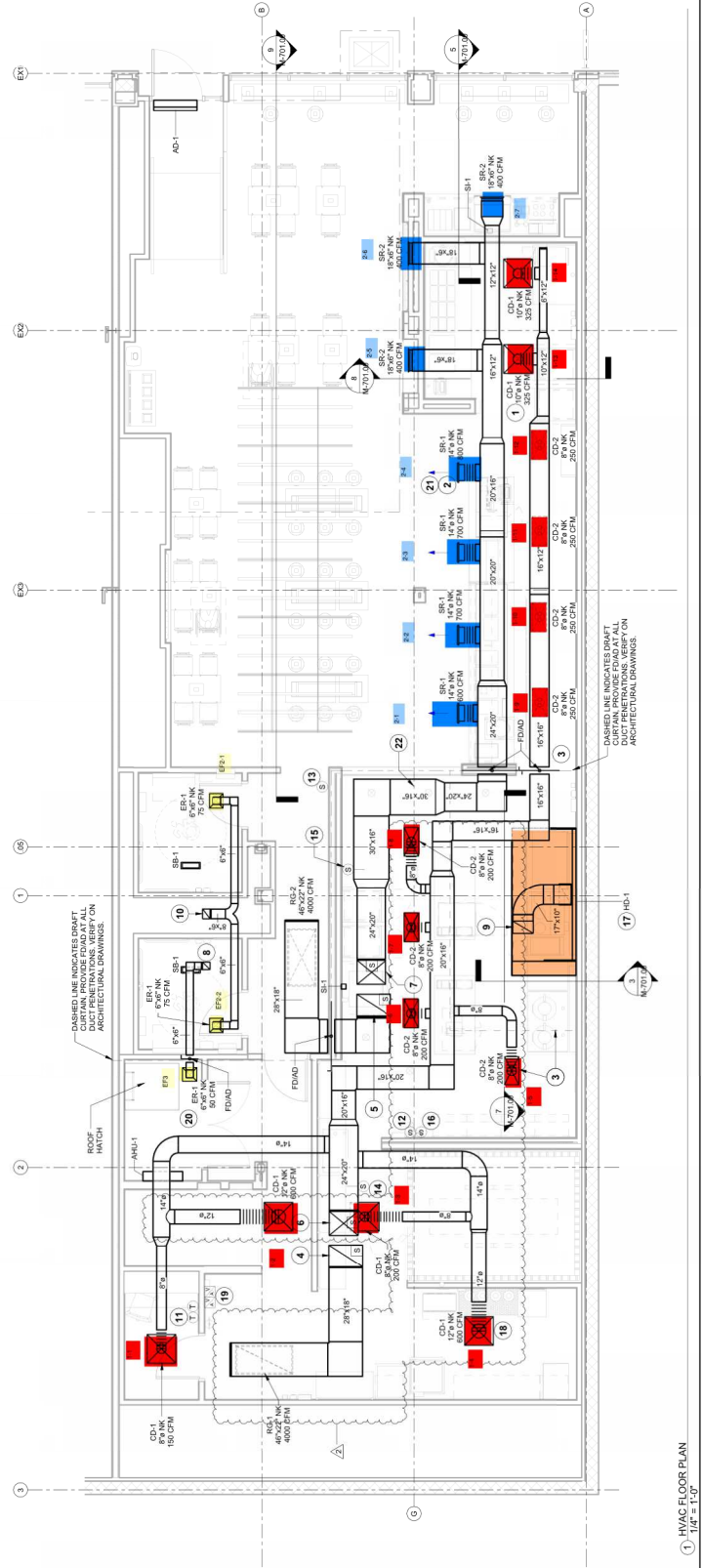


| KEYNOTES FOR THIS SHEET 1, 2, ETC. | |
|------------------------------------|---|
| 1 | SEE ARCHITECTURAL REFLECTED CEILING PLAN FOR CEILING MOUNTED SUPPLY AIR DIFFUSERS. |
| 2 | SEAL AIR INTAKE THROUGH DINING ROOM SUPPLY REGISTERS BLACK, TYPICAL. |
| 3 | NO SUPPLY DIFFUSERS SHOULD BE LOCATED CLOSER THAN 4' FROM THE HOOD AND SHOULD BE PERFORMED CEILING DIFFUSERS WITH THE HOOD CAPTURE. THESE CEILING DIFFUSERS SHOULD NOT BE PLACED OVER EQUIPMENT OR PREP SURFACES. TYPICAL. |
| 4 | TRANSISTERS TO RTU-1 RETURN CONNECTOR IN SUPPLY AIR STREAM. RTU-1 SHALL HAVE AN INTEGRAL SMOKE DETECTOR MOUNTED IN THE RETURN AIR STREAM. INTERLOCK SMOKE DETECTOR TO RTU-1 OPERATION. |
| 5 | 28' RTU-2 SHALL HAVE AN INTEGRAL SMOKE DETECTOR MOUNTED IN THE RETURN AIR STREAM. INTERLOCK SMOKE DETECTOR TO RTU-2 OPERATION. |
| 6 | 24'20" DUCT UP FROM BUILDING SUPPLY THROUGH ROOF. TRANSITION TO 17"10" DUCT UP FROM HOOD THROUGH ROOF TO EF-1 COMPLIANT WITH INTERLOCK SMOKE DETECTOR MOUNTED IN THE SUPPLY AIR STREAM. |
| 7 | 24'20" DUCT UP FROM BUILDING SUPPLY THROUGH ROOF. TRANSITION TO 17"10" DUCT UP FROM HOOD THROUGH ROOF TO EF-1 COMPLIANT WITH INTERLOCK SMOKE DETECTOR MOUNTED IN THE SUPPLY AIR STREAM. |
| 8 | 8'6" DUCT UP THROUGH ROOF TO EF-3. SEE DETAIL 6M-701. |
| 9 | 17'10" DUCT UP FROM HOOD THROUGH ROOF TO EF-1 COMPLIANT WITH INTERLOCK SMOKE DETECTOR MOUNTED IN THE SUPPLY AIR STREAM. ELBOWS IN GROUND DUCT. |
| 10 | 8'6" DUCT UP THROUGH ROOF TO EF-2. SEE DETAIL 6M-701. |
| 11 | INSTALL SINGLE-GANG VERTICAL J-BOX FOR GRIDPOINT THERMOSTATS FURNISHED BY TENS FOR RTU-1 AND RTU-2 AT THIS LOCATION AT 48" AFF. WIRING AS SHOWN IN DETAIL 6E-710. |
| 12 | INSTALL GRIDPOINT ZONE SENSOR MODULE FURNISHED BY TENS FOR RTU-1 AT THIS LOCATION AT 80" AFF. DIRECTLY TO WALL (NO JUNCTION BOX). COORDINATE LOCATION WITH EQUIPMENT. PROVIDE WIRING AS SHOWN IN DETAIL 6E-710. LABEL SENSOR WITH CORRESPONDING UNIT. |
| 13 | INSTALL GRIDPOINT ZONE SENSOR MODULE FURNISHED BY TENS FOR RTU-2 AT THIS LOCATION AT 80" AFF. DIRECTLY TO WALL (NO JUNCTION BOX). COORDINATE LOCATION WITH EQUIPMENT. PROVIDE WIRING AS SHOWN IN DETAIL 6E-710. LABEL SENSOR WITH CORRESPONDING UNIT. |

| KEYNOTES FOR THIS SHEET 1, 2, ETC. | |
|------------------------------------|---|
| 14 | INSTALL GRIDPOINT SUPPLY PROBE FURNISHED BY TENS FOR RTU-1 IN THE SUPPLY AIR STREAM. PROVIDE WIRING AS SHOWN IN DETAIL 6E-710. |
| 15 | INSTALL GRIDPOINT SUPPLY PROBE FURNISHED BY TENS FOR RTU-2 IN THE SUPPLY AIR STREAM. PROVIDE WIRING AS SHOWN IN DETAIL 6E-710. |
| 16 | COORDINATE LOCATION WITH EQUIPMENT. PROVIDE (2) #16 G. THERMISTOR CABLE FROM TEMPERATURE SENSOR TO HOOD CONTROL PANEL. LABEL SENSOR "HD-T". |
| 17 | INSTALLATION INSTRUCTIONS AND AS DETAIL IN THE ARCHITECTURAL AND STRUCTURAL DRAWINGS. INSTALL HOOD ACCORDING TO THE REQUIREMENTS OF ITS LISTING. IN COMPLIANCE WITH NFPA 96, THE HOOD SHALL HAVE AN INTEGRAL DUCT COLLAR TEMPERATURE SENSOR TO BE AUTOMATICALLY ENERGIZE THE EXHAUST AND MAKEUP AIR FANS IF WELDED OR FACTORY MANUFACTURED WATER AND AIR TIGHT INSTALLATION. CLEANOUTS PER CODE AND AS SHOWN. INSTALL HOOD PER DETAILS 4M-700 AND 2.3 & 7M-700. CHIPOTLE WILL PROVIDE AN INDEPENDENT AGENCY FOR TESTING THE INTEGRITY OF THE SMOKE DUCT SYSTEM. |
| 18 | COORDINATE LOCATION OF ER-1 GRILLE AND ALL DUCTWORK IN THIS AREA. PROVIDE SUPPLY DIFFUSER CONNECTION TO SUPPLY SYSTEM PER DETAIL 6M-700. TYPICAL. |
| 19 | PROVIDE AUDIOVISUAL SMOKE DETECTOR ANNUNCIATOR WITH REMOTE KEY OPERATED RESET. WIRE A UNIT BACK TO EACH SMOKE CORRESPONDING UNIT. AV DEVICE SERVES BOTH SMOKE DETECTORS FOR A SINGLE RTU. TYPICAL. |
| 20 | COORDINATE LOCATION OF ER-1 GRILLE AND ALL DUCTWORK IN THIS AREA. PROVIDE SUPPLY DIFFUSER CONNECTION TO SUPPLY SYSTEM PER DETAIL 6M-700. TYPICAL. |
| 21 | ADJUST SUPPLY REGISTERS SO THAT SUPPLY AIR HITS WALL ON OPPOSITE SIDE OF ROOM AT APPROXIMATELY 7' AFF WITH NO DRAFTS FELT IN THE DINING ROOM. |
| 22 | FLATTEN/OFFSET DUCTWORK AS REQUIRED TO ROUTE BELOW BEAM IN THIS AREA. |



1 HVAC FLOOR PLAN
1/4" = 1'-0"

PROJECT NUMBER:
M-100.00
2 OF 15
DOB NOW Filing # 20230403.53

HVAC PLAN

PROFESSIONAL ENGINEER
EXPIRES 12/31/2024
PROJECT NUMBER:
22860
SHEET TITLE:
HVAC PLAN



REV DATE DESCRIPTION
02/15/2024 BID SET
02/15/2024 PERMIT SET
04/09/2024 REVISION 2

STORE NO.: 31-4602
JEROME AVE
3431 JEROME AVENUE
BRONX, NY 10467



CHIPOTLE MEXICAN GRILL, INC.
CORPORATE OFFICE
1500 AVENUE OF THE AMERICAS
SUITE 1000
NEW YORK, NY 10020-1000
TEL: (212) 512-2000
WWW.CHIPOTLE.COM

214 W. Main Street, Suite 208
Moorestown, NJ 08057
(856) 776-5400

