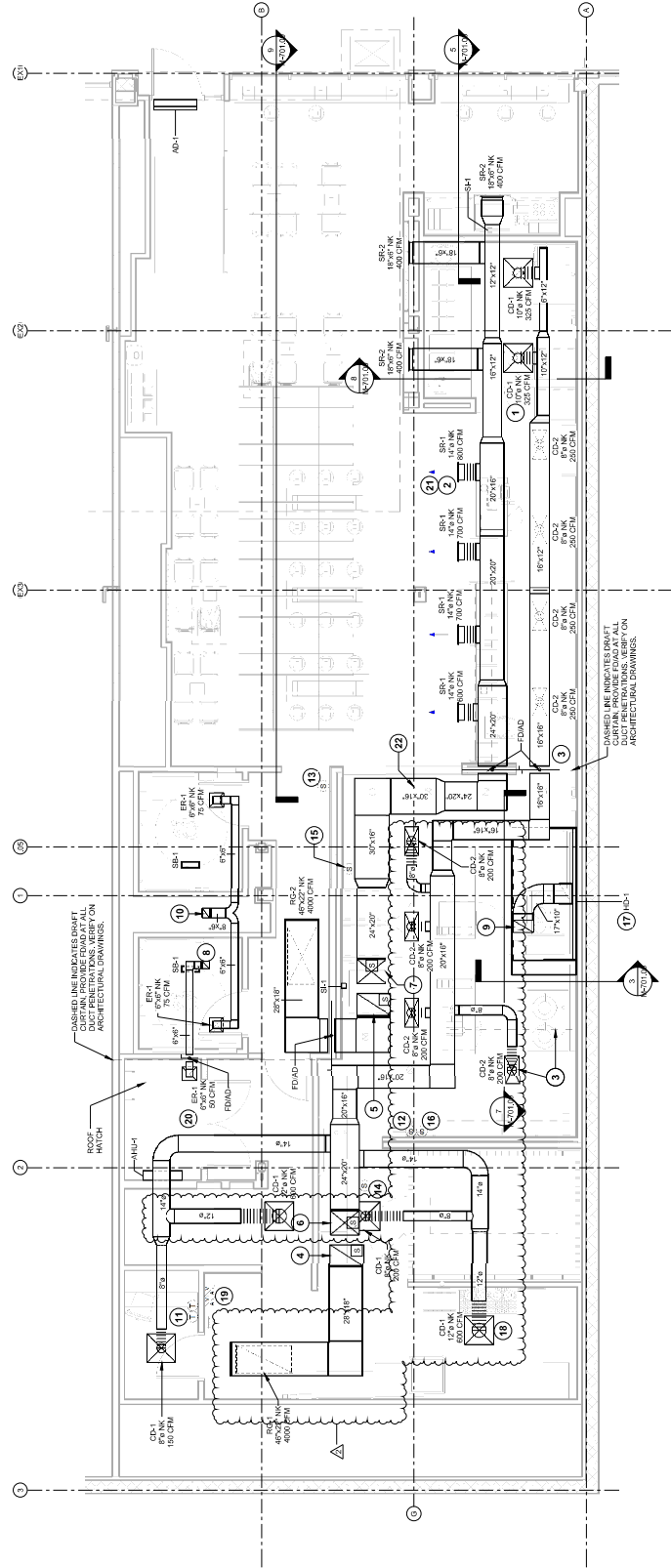


KEYNOTES FOR THIS SHEET 1, 2, ETC.

- SEE ARCHITECTURAL REFLECTED CEILING PLAN FOR CEILING REGISTER LOCATIONS.
- BAINT DUCTWORK VISIBLE THROUGH DINING ROOM SUPPLY REGISTERS BLACK, TYPICAL.
- NO SUPPLY DIFFUSERS SHOULD BE LOCATED CLOSER THAN 4' FROM THE HOOD AND SHOULD BE PERFORATED CEILING DIFFUSERS WITH THE HOOD CAPTURE AREA. DIFFUSERS SHOULD BE PLACED OVER EQUIPMENT OR PREP SURFACES, TYPICAL.
- TRANSVERTER TO RTU-1 RETURN CONNECTION TO BE MOUNTED ON THE RETURN AIR STREAM. INTERLOCK SMOKE DETECTOR TO RTU-1 OPERATION.
- 28' RETURN AIR STREAM TO RTU-1 CONNECTION TO BE MOUNTED ON THE RETURN AIR STREAM. INTERLOCK SMOKE DETECTOR TO RTU-2 OPERATION.
- 24'20" DUCT UP FROM BUILDING SUPPLY THROUGH ROOF. TRANSITION TO INTEGRAL SMOKE DETECTOR MOUNTED IN THE SUPPLY AIR STREAM.
- 24'20" DUCT UP FROM BUILDING SUPPLY THROUGH ROOF. TRANSITION TO INTEGRAL SMOKE DETECTOR MOUNTED IN THE SUPPLY AIR STREAM.
- 8'6" DUCT UP THROUGH ROOF. TO EF-3. SEE DETAIL 6M-701.
- 17'10" DUCT UP FROM HOOD THROUGH ROOF. TO EF-1 COMPLIANT WITH ELBOWS IN GRASE DUCT. SEE DETAIL 6M-701.
- INSTALL SINGLE-GANG VERTICAL JBOX FOR GRIDPOINT THERMOSTATS FURNISHED BY TENS FOR RTU-1 AND RTU-2 AT THIS LOCATION AT 48" AFF. WIRING AS SHOWN IN DETAIL 6E-710.
- INSTALL GRIDPOINT ZONE SENSOR MODULE FURNISHED BY TENS FOR RTU-1 AT THIS LOCATION AT 80" AFF. DIRECTLY TO WALL (NO JUNCTION BOX). COORDINATE LOCATION WITH EQUIPMENT. PROVIDE WIRING AS SHOWN IN DETAIL 6E-710. LABEL SENSOR WITH CORRESPONDING UNIT.

KEYNOTES FOR THIS SHEET 1, 2, ETC.

- INSTALL GRIDPOINT SUPPLY PROBE FURNISHED BY TENS FOR RTU-1 IN THE DINING ROOM. PROVIDE WIRING AS SHOWN IN DETAIL 6E-710.
- INSTALL GRIDPOINT SUPPLY PROBE FURNISHED BY TENS FOR RTU-2 IN THE SUPPLY DUCTWORK UPSTREAM FROM THE FIRST BRANCH CONNECTION. PROVIDE WIRING AS SHOWN IN DETAIL 6E-710.
- LOCATION AT 60" AFF. COORDINATE LOCATION WITH EQUIPMENT. HOOD CONTROL PANEL. LABEL SENSOR "HD-1".
- INSTALLATION INSTRUCTIONS AND AS DETAIL IN THE ARCHITECTURAL AND STRUCTURAL DRAWINGS. INSTALL HOOD ACCORDING TO THE REQUIREMENTS OF ITS LISTING. IN COMPLIANCE WITH NFPA 96, THE HOOD SHALL HAVE AN INTEGRAL DUCT COLLAR TEMPERATURE SENSOR TO BE AUTOMATICALLY ENERGIZED THE EXHAUST AND MAKEUP AIR FANS IF WELDED OR FACTORY MANUFACTURED WATER AND AIR TIGHT INSTALLATION. CLEANOUTS PER CODE AND AS SHOWN. INSTALL HOOD PER DETAILS 4M-700 AND 2.3 & 7M-700. CHIPOTLE WILL PROVIDE AN INDEPENDENT AGENCY FOR TESTING THE INTEGRITY OF THE SMOKE DUCT SYSTEM.
- COORDINATE LOCATION OF ER-1 GRILLE AND ALL DUCTWORK IN THIS AREA. DETAIL 6M-700, TYPICAL.
- PROVIDE AUDIOVISUAL REMOTE SMOKE DETECTOR ANNUNCIATOR WITH REMOTE KEY OPERATED RESET. WIRE A UNIT BACK TO EACH SMOKE CORRESPONDING UNIT. AV DEVICE SERVES BOTH SMOKE DETECTORS FOR A SINGLE RTU, TYPICAL.
- COORDINATE LOCATION OF ER-1 GRILLE AND ALL DUCTWORK IN THIS AREA. DETAIL 6M-700, TYPICAL.
- ADJUST SUPPLY REGISTERS SO THAT SUPPLY AIR HITS WALL OR FELT IN THE DINING ROOM.
- FLATTEN/OFFSET DUCTWORK AS REQUIRED TO ROUTE BELOW BEAM IN THIS AREA.



1 HVAC FLOOR PLAN
1/4" = 1'-0"

VERIFY ALL REGISTER AND DUCT PENETRATIONS. VERIFY ON ARCHITECTURAL DRAWINGS.



CHIPOTLE MEXICAN GRILL, INC.
15000 WILSON AVENUE, SUITE 200
COLUMBIA, MD 21046-2008
PH: 410-326-7200
WWW.CHIPOTLE.COM



POLARIS COMMERCIAL ENGINEERING, INC.
214 W. Main Street, Suite 208
Moorestown, NJ 08057
(856) 778-5400

THIS DRAWING IS AN INSTRUMENT OF SERVICE FOR THE PROJECT AND IS THE PROPERTY OF POLARIS COMMERCIAL ENGINEERING, INC. IT IS TO BE USED ONLY FOR THE PROJECT AND SITE SPECIFICALLY IDENTIFIED THEREON. IT IS NOT TO BE REPRODUCED, COPIED, OR TRANSMITTED IN ANY FORM OR BY ANY MEANS, ELECTRONIC OR MECHANICAL, WITHOUT THE WRITTEN PERMISSION OF POLARIS COMMERCIAL ENGINEERING, INC.

DATE: 02/15/2024
PROJECT: 23080
SHEET: M-100.00
SHEET NUMBER: 2 OF 15

PROJECT: 31-4602
ADDRESS: JEROME AVE, BRONX, NY 10467

REVISIONS:
02/15/2024 BID SET
02/15/2024 PERMIT SET
04/09/2024 REVISION 2

PROFESSIONAL SEAL
STATE OF NEW YORK
REGISTERED PROFESSIONAL ENGINEER
NO. 10000
EXPIRES 12/31/2025
PROJECT NUMBER
23080
SHEET TITLE
HVAC PLAN
SHEET NUMBER
M-100.00
2 OF 15
DOI NOW File # A008943251



CHIPOTLE MEXICAN GRILL, INC.
15000 W. ALVARADO AVENUE, SUITE 100
CANTON, CA 92521-2909
PH: (951) 341-2300
WWW.CHIPOTLE.COM

STORE NO.: 31-4602
JEROME AVE
BRONX, NY 10467

REV DATE REVISION
02/15/2024 BID SET
02/15/2024 PERMIT SET



DANIEL MITCHELL
PROFESSIONAL ENGINEER
NO. 021500012
STATE OF NEW YORK
DRAWN BY: P
CHECKED BY: P
PROJECT NUMBER: 23080
SHEET TITLE: HVAC ROOF PLAN

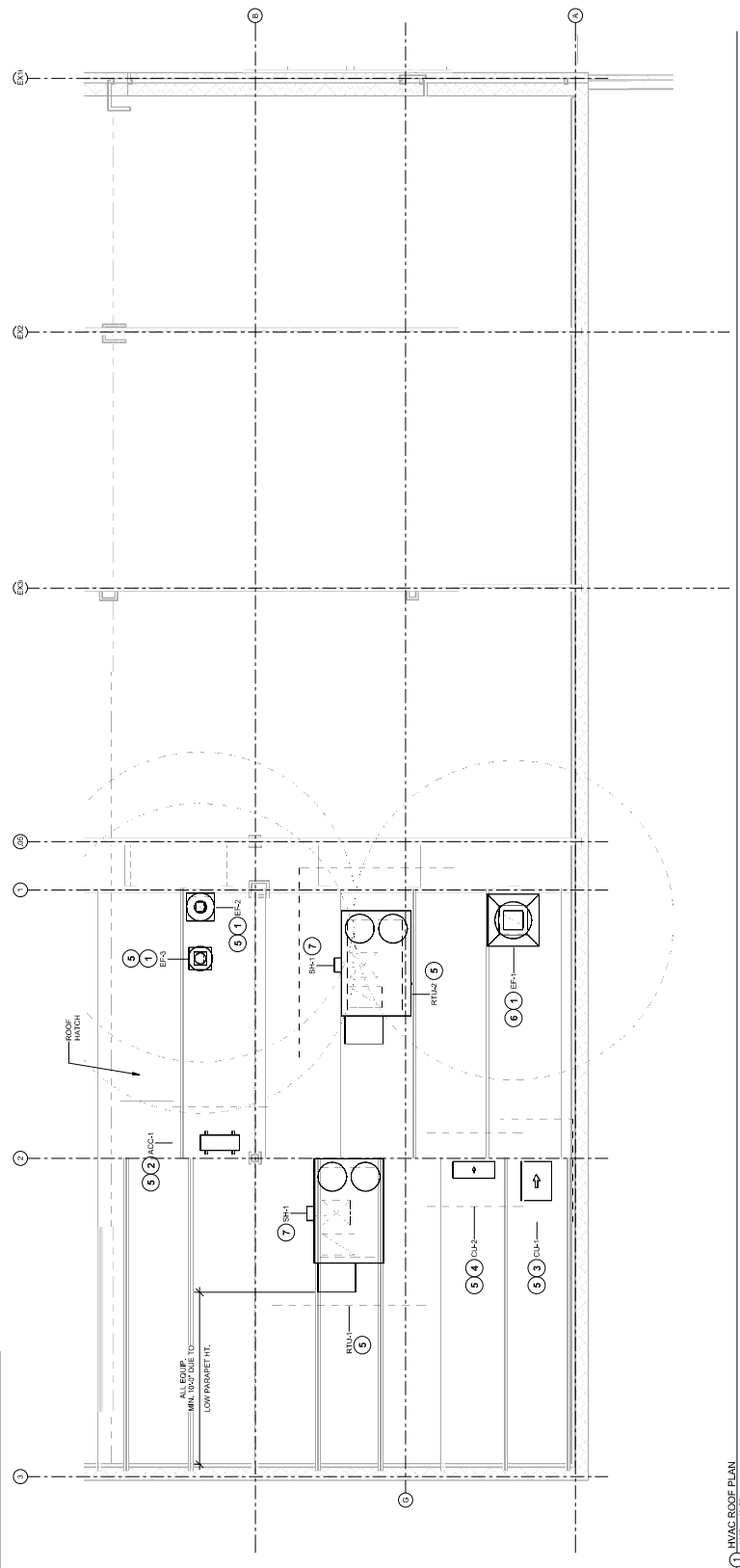
SHEET NUMBER
M-101.00
3 OF 15
DOI NOW File # 000840353

KEYNOTES FOR THIS SHEET 1, 2, ETC.

5	INSTALL ROOF GAS EQUIPMENT PER MANUFACTURERS INSTALLATION INSTRUCTIONS AND AS DETAILED IN THE ARCHITECTURAL AND STRUCTURAL DRAWINGS.
6	INSTALL EXHAUST FAN EFF-1 PER DETAIL 8M-700 AND AS DETAILED IN THE ARCHITECTURAL AND STRUCTURAL DRAWINGS. INSTALL GREASE INTERLOCK SYSTEM FURNISHED BY CHIPOTLE ON EXHAUST FAN EFF-1.
7	INSTALL REME HALO AIR PURIFIER FURNISHED BY TUV IN RTU PER DETAIL 8M-700. SEE ELECTRICAL DRAWINGS FOR WIRING. INSTALL STICKERS ON FACE OF ENCLOSURE PER DETAIL AND ON ANY RTU ACCESS DOOR(S) THROUGH WHICH THE REME HALO WOULD BE VISIBLE IF OPENED.

KEYNOTES FOR THIS SHEET 1, 2, ETC.

1	1/2" MIN. CLEARANCE FROM OUTER EDGE OF EXHAUST FAN TO FRESH AIR INTAKES. TYPICAL.
2	INSTALL REMOTE CONDENSER FOR TRASH ROOM SPLIT SYSTEM ON ROOF. INSTALL REFRIGERANT LINE SET, TEMPERATURE CONTROL, SIGHT GLASS, FILTER DRIER, PRESSURE CONTROL, LOW AMBIENT CONTROLS AND WEATHERPROOF HOUSING. TRAP AND SLOPE REFRIGERANT PIPING PENETRATIONS THROUGH ROOF. INSTALLATION SHALL COMPLY WITH ASHRAE/ANSI STANDARD 15. INSTALL REFRIGERANT PIPING THROUGH ROOF DECK TO WITHIN 3" OF THE REMOTE CONDENSER.
3	INSTALL REMOTE CONDENSING UNIT FOR WALK-IN COOLER ON ROOF AS DETAILED IN THE ARCHITECTURAL AND STRUCTURAL DRAWINGS. INSTALL REFRIGERANT LINE SET, TEMPERATURE CONTROL, SIGHT GLASS, FILTER DRIER, PRESSURE CONTROL, LOW AMBIENT CONTROLS, AND WEATHERPROOF HOUSING. TRAP AND SLOPE REFRIGERANT PIPING PENETRATIONS THROUGH ROOF. INSTALLATION SHALL COMPLY WITH ASHRAE/ANSI STANDARD 15. INSTALL REFRIGERANT PIPING THROUGH ROOF DECK TO WITHIN 3" OF THE CONDENSING UNIT. CUT 2-1/2" HOLE IN WALK-IN COOLER ROOF FOR REFRIGERANT LINE SET AND SEAL PER THE COOLER MANUFACTURERS INSTALLATION INSTRUCTIONS AFTER LINE SET IS INSTALLED.
4	INSTALL REMOTE CONDENSER FOR ICE MACHINE ON ROOF. INSTALL REFRIGERANT LINE SET, TEMPERATURE CONTROL, SIGHT GLASS, FILTER DRIER, PRESSURE CONTROL, LOW AMBIENT CONTROLS, TRAP AND SLOPE REFRIGERANT PIPING PENETRATIONS THROUGH ROOF. INSTALLATION SHALL COMPLY WITH ASHRAE/ANSI STANDARD 15. INSTALL REFRIGERANT PIPING THROUGH ROOF DECK TO WITHIN 3" OF THE CONDENSER. IF REFRIGERANT PIPING TO ICE MACHINE IS THROUGH ROOF DECK, IT SHALL BE INSTALLED IN UNFINISHED STEEL SHOULD AS SHOWN IN THE ARCHITECTURAL DRAWINGS.



1 HVAC ROOF PLAN
1/4" = 1'-0"

HOOD SHOP DRAWING PRODUCED BY
MANUFACTURER - FOR REFERENCE ONLY

NOTES:

1. ALL DIMENSIONS ARE TO FACE UNLESS OTHERWISE NOTED.
2. ALL DIMENSIONS ARE TO FACE UNLESS OTHERWISE NOTED.
3. ALL DIMENSIONS ARE TO FACE UNLESS OTHERWISE NOTED.
4. ALL DIMENSIONS ARE TO FACE UNLESS OTHERWISE NOTED.
5. ALL DIMENSIONS ARE TO FACE UNLESS OTHERWISE NOTED.
6. ALL DIMENSIONS ARE TO FACE UNLESS OTHERWISE NOTED.
7. ALL DIMENSIONS ARE TO FACE UNLESS OTHERWISE NOTED.
8. ALL DIMENSIONS ARE TO FACE UNLESS OTHERWISE NOTED.
9. ALL DIMENSIONS ARE TO FACE UNLESS OTHERWISE NOTED.
10. ALL DIMENSIONS ARE TO FACE UNLESS OTHERWISE NOTED.
11. ALL DIMENSIONS ARE TO FACE UNLESS OTHERWISE NOTED.
12. ALL DIMENSIONS ARE TO FACE UNLESS OTHERWISE NOTED.
13. ALL DIMENSIONS ARE TO FACE UNLESS OTHERWISE NOTED.
14. ALL DIMENSIONS ARE TO FACE UNLESS OTHERWISE NOTED.
15. ALL DIMENSIONS ARE TO FACE UNLESS OTHERWISE NOTED.
16. ALL DIMENSIONS ARE TO FACE UNLESS OTHERWISE NOTED.
17. ALL DIMENSIONS ARE TO FACE UNLESS OTHERWISE NOTED.
18. ALL DIMENSIONS ARE TO FACE UNLESS OTHERWISE NOTED.
19. ALL DIMENSIONS ARE TO FACE UNLESS OTHERWISE NOTED.
20. ALL DIMENSIONS ARE TO FACE UNLESS OTHERWISE NOTED.
21. ALL DIMENSIONS ARE TO FACE UNLESS OTHERWISE NOTED.
22. ALL DIMENSIONS ARE TO FACE UNLESS OTHERWISE NOTED.
23. ALL DIMENSIONS ARE TO FACE UNLESS OTHERWISE NOTED.
24. ALL DIMENSIONS ARE TO FACE UNLESS OTHERWISE NOTED.
25. ALL DIMENSIONS ARE TO FACE UNLESS OTHERWISE NOTED.
26. ALL DIMENSIONS ARE TO FACE UNLESS OTHERWISE NOTED.
27. ALL DIMENSIONS ARE TO FACE UNLESS OTHERWISE NOTED.
28. ALL DIMENSIONS ARE TO FACE UNLESS OTHERWISE NOTED.
29. ALL DIMENSIONS ARE TO FACE UNLESS OTHERWISE NOTED.
30. ALL DIMENSIONS ARE TO FACE UNLESS OTHERWISE NOTED.
31. ALL DIMENSIONS ARE TO FACE UNLESS OTHERWISE NOTED.
32. ALL DIMENSIONS ARE TO FACE UNLESS OTHERWISE NOTED.
33. ALL DIMENSIONS ARE TO FACE UNLESS OTHERWISE NOTED.
34. ALL DIMENSIONS ARE TO FACE UNLESS OTHERWISE NOTED.
35. ALL DIMENSIONS ARE TO FACE UNLESS OTHERWISE NOTED.
36. ALL DIMENSIONS ARE TO FACE UNLESS OTHERWISE NOTED.
37. ALL DIMENSIONS ARE TO FACE UNLESS OTHERWISE NOTED.
38. ALL DIMENSIONS ARE TO FACE UNLESS OTHERWISE NOTED.
39. ALL DIMENSIONS ARE TO FACE UNLESS OTHERWISE NOTED.
40. ALL DIMENSIONS ARE TO FACE UNLESS OTHERWISE NOTED.
41. ALL DIMENSIONS ARE TO FACE UNLESS OTHERWISE NOTED.
42. ALL DIMENSIONS ARE TO FACE UNLESS OTHERWISE NOTED.
43. ALL DIMENSIONS ARE TO FACE UNLESS OTHERWISE NOTED.
44. ALL DIMENSIONS ARE TO FACE UNLESS OTHERWISE NOTED.
45. ALL DIMENSIONS ARE TO FACE UNLESS OTHERWISE NOTED.
46. ALL DIMENSIONS ARE TO FACE UNLESS OTHERWISE NOTED.
47. ALL DIMENSIONS ARE TO FACE UNLESS OTHERWISE NOTED.
48. ALL DIMENSIONS ARE TO FACE UNLESS OTHERWISE NOTED.
49. ALL DIMENSIONS ARE TO FACE UNLESS OTHERWISE NOTED.
50. ALL DIMENSIONS ARE TO FACE UNLESS OTHERWISE NOTED.
51. ALL DIMENSIONS ARE TO FACE UNLESS OTHERWISE NOTED.
52. ALL DIMENSIONS ARE TO FACE UNLESS OTHERWISE NOTED.
53. ALL DIMENSIONS ARE TO FACE UNLESS OTHERWISE NOTED.
54. ALL DIMENSIONS ARE TO FACE UNLESS OTHERWISE NOTED.
55. ALL DIMENSIONS ARE TO FACE UNLESS OTHERWISE NOTED.
56. ALL DIMENSIONS ARE TO FACE UNLESS OTHERWISE NOTED.
57. ALL DIMENSIONS ARE TO FACE UNLESS OTHERWISE NOTED.
58. ALL DIMENSIONS ARE TO FACE UNLESS OTHERWISE NOTED.
59. ALL DIMENSIONS ARE TO FACE UNLESS OTHERWISE NOTED.
60. ALL DIMENSIONS ARE TO FACE UNLESS OTHERWISE NOTED.
61. ALL DIMENSIONS ARE TO FACE UNLESS OTHERWISE NOTED.
62. ALL DIMENSIONS ARE TO FACE UNLESS OTHERWISE NOTED.
63. ALL DIMENSIONS ARE TO FACE UNLESS OTHERWISE NOTED.
64. ALL DIMENSIONS ARE TO FACE UNLESS OTHERWISE NOTED.
65. ALL DIMENSIONS ARE TO FACE UNLESS OTHERWISE NOTED.
66. ALL DIMENSIONS ARE TO FACE UNLESS OTHERWISE NOTED.
67. ALL DIMENSIONS ARE TO FACE UNLESS OTHERWISE NOTED.
68. ALL DIMENSIONS ARE TO FACE UNLESS OTHERWISE NOTED.
69. ALL DIMENSIONS ARE TO FACE UNLESS OTHERWISE NOTED.
70. ALL DIMENSIONS ARE TO FACE UNLESS OTHERWISE NOTED.
71. ALL DIMENSIONS ARE TO FACE UNLESS OTHERWISE NOTED.
72. ALL DIMENSIONS ARE TO FACE UNLESS OTHERWISE NOTED.
73. ALL DIMENSIONS ARE TO FACE UNLESS OTHERWISE NOTED.
74. ALL DIMENSIONS ARE TO FACE UNLESS OTHERWISE NOTED.
75. ALL DIMENSIONS ARE TO FACE UNLESS OTHERWISE NOTED.
76. ALL DIMENSIONS ARE TO FACE UNLESS OTHERWISE NOTED.
77. ALL DIMENSIONS ARE TO FACE UNLESS OTHERWISE NOTED.
78. ALL DIMENSIONS ARE TO FACE UNLESS OTHERWISE NOTED.
79. ALL DIMENSIONS ARE TO FACE UNLESS OTHERWISE NOTED.
80. ALL DIMENSIONS ARE TO FACE UNLESS OTHERWISE NOTED.
81. ALL DIMENSIONS ARE TO FACE UNLESS OTHERWISE NOTED.
82. ALL DIMENSIONS ARE TO FACE UNLESS OTHERWISE NOTED.
83. ALL DIMENSIONS ARE TO FACE UNLESS OTHERWISE NOTED.
84. ALL DIMENSIONS ARE TO FACE UNLESS OTHERWISE NOTED.
85. ALL DIMENSIONS ARE TO FACE UNLESS OTHERWISE NOTED.
86. ALL DIMENSIONS ARE TO FACE UNLESS OTHERWISE NOTED.
87. ALL DIMENSIONS ARE TO FACE UNLESS OTHERWISE NOTED.
88. ALL DIMENSIONS ARE TO FACE UNLESS OTHERWISE NOTED.
89. ALL DIMENSIONS ARE TO FACE UNLESS OTHERWISE NOTED.
90. ALL DIMENSIONS ARE TO FACE UNLESS OTHERWISE NOTED.
91. ALL DIMENSIONS ARE TO FACE UNLESS OTHERWISE NOTED.
92. ALL DIMENSIONS ARE TO FACE UNLESS OTHERWISE NOTED.
93. ALL DIMENSIONS ARE TO FACE UNLESS OTHERWISE NOTED.
94. ALL DIMENSIONS ARE TO FACE UNLESS OTHERWISE NOTED.
95. ALL DIMENSIONS ARE TO FACE UNLESS OTHERWISE NOTED.
96. ALL DIMENSIONS ARE TO FACE UNLESS OTHERWISE NOTED.
97. ALL DIMENSIONS ARE TO FACE UNLESS OTHERWISE NOTED.
98. ALL DIMENSIONS ARE TO FACE UNLESS OTHERWISE NOTED.
99. ALL DIMENSIONS ARE TO FACE UNLESS OTHERWISE NOTED.
100. ALL DIMENSIONS ARE TO FACE UNLESS OTHERWISE NOTED.

polaris
Commercial Equipment, Inc.
214 W. Main Street, Suite 208
Monroeville, PA 15146
(412) 778-5400

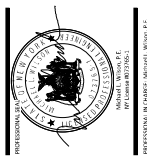
THIS DRAWING IS AN INSTRUMENT OF SERVICE AND IS THE PROPERTY OF POLARIS COMMERCIAL EQUIPMENT, INC. IT IS TO BE USED ONLY FOR THE PROJECT AND SITE SPECIFICALLY IDENTIFIED HEREON. IT IS NOT TO BE REPRODUCED, COPIED, OR TRANSMITTED IN ANY FORM OR BY ANY MEANS, ELECTRONIC OR MECHANICAL, INCLUDING PHOTOCOPYING, RECORDING, OR BY ANY INFORMATION STORAGE AND RETRIEVAL SYSTEM, WITHOUT THE WRITTEN PERMISSION OF POLARIS COMMERCIAL EQUIPMENT, INC.



CHIPOTLE MEXICAN GRILL, INC.
CENTRAL DEVELOPMENT, INC.
CENTRAL DEVELOPMENT, INC.
CENTRAL DEVELOPMENT, INC.
CENTRAL DEVELOPMENT, INC.

STORE NO.: 31-4602
JEROME AVE
3431 JEROME AVENUE
BRONX, NY 10467

REV: 02/15/2024 PERMIT SET
DATE: 02/15/2024 BID SET
DESCRIPTION: 02/15/2024 PERMIT SET



PROFESSIONAL ENGINEER
JAMES MITCHELL, No. 12507
STATE OF NEW YORK
DRAWN BY: JMM
CHECKED BY: JMM
PROJECT NUMBER: 23080

SHEET TITLE:
CAPTIVEFAIRE
DRAWINGS

SHEET NUMBER:
M-403.00
6 OF 15

DOI NOW FILE # 0008040351

HOOD SHOP DRAWING PRODUCED BY
MANUFACTURER - FOR REFERENCE ONLY

EXHAUST FAN INFORMATION - JOB#6177008

UNIT	TYPE	UNIT	DESCRIPTION	UNIT	TYPE	UNIT	DESCRIPTION	UNIT	TYPE	UNIT	DESCRIPTION	UNIT	TYPE	UNIT	DESCRIPTION
1	EF-1	1	12" BORE	1	EF-1	1	12" BORE	1	EF-1	1	12" BORE	1	EF-1	1	12" BORE
2	EF-2	1	12" BORE	2	EF-2	1	12" BORE	2	EF-2	1	12" BORE	2	EF-2	1	12" BORE
3	EF-3	1	12" BORE	3	EF-3	1	12" BORE	3	EF-3	1	12" BORE	3	EF-3	1	12" BORE

FAN OPTIONS

UNIT	TYPE	UNIT	DESCRIPTION
1	EF-1	1	12" BORE
2	EF-2	1	12" BORE
3	EF-3	1	12" BORE

FAN ACCESSORIES

UNIT	TYPE	UNIT	DESCRIPTION
1	EF-1	1	12" BORE
2	EF-2	1	12" BORE
3	EF-3	1	12" BORE

CORE ASSEMBLIES

UNIT	TYPE	UNIT	DESCRIPTION
1	EF-1	1	12" BORE
2	EF-2	1	12" BORE
3	EF-3	1	12" BORE

REVISIONS

NO.	DATE	DESCRIPTION
1	02/15/2024	BID SET
2	02/15/2024	PERMIT SET

Highwoods Group
4641 Pittsburgh Pike (aka, Shiloh), (aka), NC 27616 PHONE: (818) 975-0600 FAX: (818) 975-0777 EMAIL: info@highwoodsgroup.com

Chipotle Mexican Grill
CENTRAL EQUIPMENT, INC.
10000 W. 10TH AVENUE, SUITE 100
DENVER, CO 80202
PHONE: (303) 751-7000
WWW.CHIPOTTLE.COM

STORE NO.: 31-4602
JEROME AVE
3431 JEROME AVENUE
BRONX, NY 10467

DATE: 02/15/2024
REVISION: 02/15/2024 BID SET

PROJECT NUMBER: 23080
DATE: 11/13/2023
DWG. NO: 6177008
DRAWN BY: JWB/JO
SCALE: 1/8" = 1'-0"
SHEET TITLE: CAPTIVEFAIRE DRAWINGS
MASTER DRAWING
SHEET NO. 4

HOOD SHOP DRAWING PRODUCED BY
MANUFACTURER - FOR REFERENCE ONLY

<p>4841 Fingston Park Rd, Raleigh, NC 27615 PHONE: (919) 875-0420 FAX: 9198759577 EMAIL: mg@highwoods.com</p> <p>www.captive.com</p> <p>Highwoods Group</p>		
<p>CHIPLEY JEROME AVE #4602 Bronx, NY, 10457</p> <p>DATE: 11/11/2023 DWG.#: 67793 DRAWN: JIS-PC PROJECT: 2300 SHEET TITLE: CAPTIVEFAIRE DRAWINGS MASTER DRAWING</p> <p>SHEET NO. 6</p>		

polaris
Contractors & Engineers, P.C.
214 W. Main Street, Suite 208
Monroeville, PA 15146
(856) 778-5400

DATE: 02/25/2024
THIS DRAWING IS AN INSTRUMENT OF SERVICE FOR THE PROJECT AND IS THE PROPERTY OF POLARIS CONTRACTORS & ENGINEERS, P.C. IT IS TO BE USED ONLY FOR THE PROJECT AND NOT FOR ANY OTHER PROJECT. ANY REUSE OR MODIFICATION OF THIS DRAWING WITHOUT THE WRITTEN PERMISSION OF POLARIS CONTRACTORS & ENGINEERS, P.C. IS STRICTLY PROHIBITED.



CHIPOTLE MEXICAN GRILL, INC.
CORPORATE, 4001 W. 15TH AVENUE
DENVER, CO 80202
PHONE: 303.541.3000
WWW.CHIPOTLE.COM

STORE NO.: 31-4602
JEROME AVE
3431 JEROME AVENUE
BRONX, NY 10467

REV: DATE: DESCRIPTION
02/25/2024 BID SET
02/25/2024 PERMIT SET



DANIEL MITCHELL
PROFESSIONAL ENGINEER
DANIEL MITCHELL ENGINEERING, P.C.
100 WEST 10TH STREET
NEW YORK, NY 10011
PHONE: 212.253.1000
FAX: 212.253.1001
WWW.DMENG.COM

CAPTIVEFAIRE
DRAWINGS

SHEET NUMBER

M-406.00

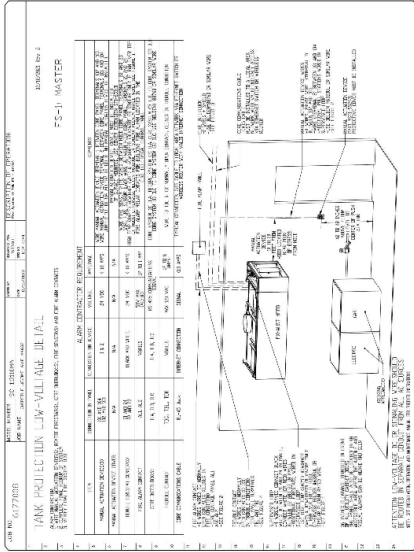
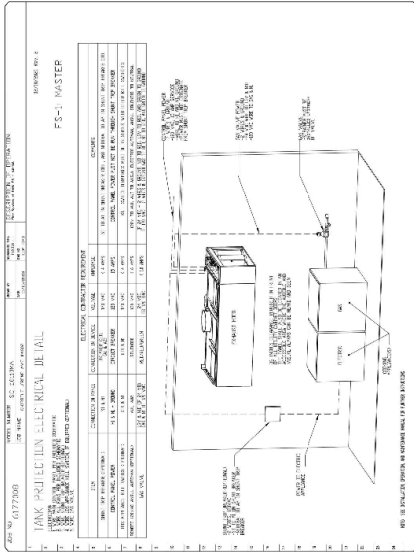
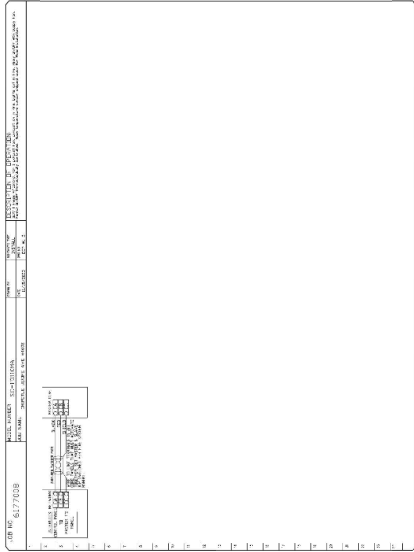
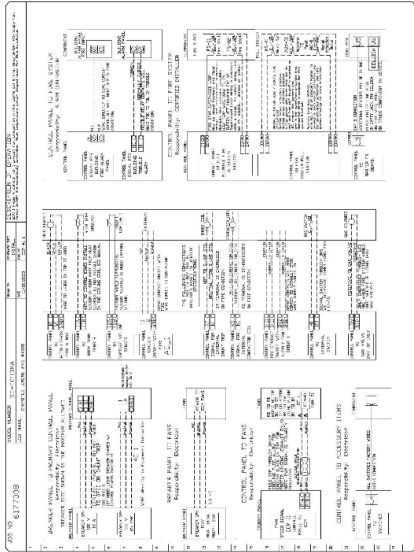
9 OF 15

DOI: NOW FILE # 0008040351

**HOOD SHOP DRAWING PRODUCED BY
MANUFACTURER - FOR REFERENCE ONLY**

ELECTRICAL SCHEDULE - JOB#6172808

NO.	SYMBOL	DESCRIPTION	QUANTITY	UNIT	DATE	BY	CHKD.
1	□	3-PHASE 480V 3-WIRE	1	FEED	1/1/08	JK	JK
2	□	3-PHASE 480V 3-WIRE	1	FEED	1/1/08	JK	JK
3	□	3-PHASE 480V 3-WIRE	1	FEED	1/1/08	JK	JK
4	□	3-PHASE 480V 3-WIRE	1	FEED	1/1/08	JK	JK



REVISIONS

NO.	DATE	DESCRIPTION
1	11/25/2013	ISSUED FOR PERMITS
2	02/15/2014	PERMIT SET

DATE 11/25/2013
PROJECT 6172808
PROJECT NAME 2300
DRAWN BY JH-C
SCALE 3/4" = 1'-0"
MASTER DRAWING

DATE 02/15/2014
DESCRIPTION BID SET

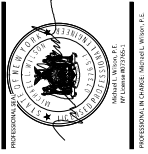
DATE 02/15/2014
DESCRIPTION PERMIT SET

DATE 02/15/2014
DESCRIPTION PERMIT SET

DATE 02/15/2014
DESCRIPTION BID SET

CHIPOTLE MEXICAN GRILL, INC.
CENTRAL OPERATIONS, INC.
CENTRAL OPERATIONS, INC.
CENTRAL OPERATIONS, INC.
CENTRAL OPERATIONS, INC.
CENTRAL OPERATIONS, INC.


STORE NO.: 31-4602
JEROME AVE
BRONX, NY 10467



M-407.00
10 OF 15
JOB NO: 6172808

2023-DB#3/P#1-4

HOOD SHOP DRAWING PRODUCED BY
MANUFACTURER - FOR REFERENCE ONLY



CHIPOTLE MEXICAN GRILL, INC.
CENTRAL OPERATIONS, INC.
CENTRAL OPERATIONS, INC.
15000 W. ALBERTA AVENUE
DENVER, CO 80242
PH: 303.733.9100
WWW.CHIPOTLE.COM

STORE NO.: 31-4602
JEROME AVE
3431 JEROME AVENUE
BRONX, NY 10467

DATE: 02/15/2024
REVISION: 02/15/2024 BID SET

DATE: 11/15/2023
DRAWN BY: JH-C
SCALE: 3/8" = 1'-0"
MASTER DRAWING

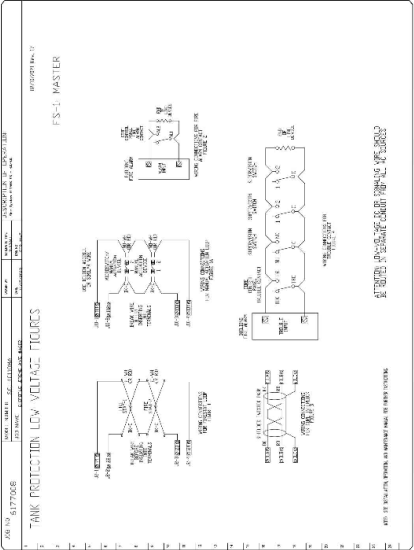
PROJECT NAME: 3431 JEROME AVENUE, BRONX, NY, 10457
DRAWN BY: JH-C
SCALE: 3/8" = 1'-0"
MASTER DRAWING

SHEET NO. 9
M-408.00
11 OF 15
DOI NOW FILE # 000840251

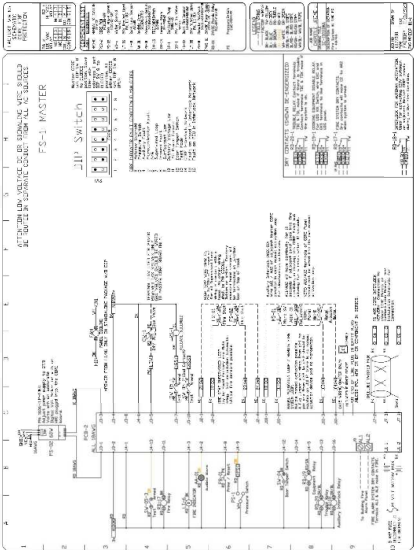
REVISIONS:

NO.	DATE	DESCRIPTION

4817 Trignon Park Rd., Raleigh, NC 27615 PHONE: 919-875-9422 FAX: 919-875-9775 EMAIL: rpg@chipotle.com
www.chipotle.com



THINK PRECISION LOW VOLTAGE TROUBLESHOOTING
ES-1 MASTER



3HP Switchgear
ES-1 MASTER