



One University Place
8801 J.M. Keynes Drive, Suite 240
Charlotte, North Carolina 28262
Phone 704-376-7072
www.cmta.com

PROJECT: CMS NWSA – New Building and Renovation
PROJECT NO: 223.063.00
SUBMITTAL: Submittal 238126-1.0 Split Systems - PD
DATE RECEIVED: 7/08/2024

Engineer's review is for conformance with the general design concept and for general arrangement only. Review and approval shall not be construed to mean that the engineer accepts the detail calculations and dimensions shown in the submittal or any deviation from the requirements of the contract documents. Contractor is responsible for errors or omissions in the submittal; for meeting all requirements of the contract documents; for confirming and correlating job site dimensions; for information that pertains solely to fabrication processes or to techniques of construction; and for the coordination of his work with all other trades.

DISPOSITION LEGEND

EI EXCEPTIONS INDICATED – RESUBMISSION NOT REQUIRED

Fabrications may proceed as per notations. If Contractor cannot comply with notation, resubmit item. Otherwise, resubmission is not required. Changes to contract or contract sum are not authorized.

Reviewer: Carter Seibert

Date: 07.19.2024

ITEM – DISPOSITION; COMMENT(S):

1. Provide split system WM-18 serving storage room E147 in building E with condensate pump.
2. Coordinate differences in electrical requirements from BOD with electrical contractor

KLG:
23 81 26-1.0 Split System Air Conditioners - PD -
No additional comments.BM 07/10/2024

END OF SHOP DRAWING REVIEW

Jacquelyn Satterwhite

From: Ryan 1. Thornburg <ryan1.thornburg@cms.k12.nc.us>
Sent: Thursday, July 18, 2024 2:07 PM
To: Jacquelyn Satterwhite
Cc: Kenneth B. Brown
Subject: [EXTERNAL] RE: 9201-224030- CMS NWSA - New Building and Renovation - SPLIT-SYSTEM AIR-CONDITIONERS - PD

No Comments on this submittal by CMS, please verify that it meets current Design Specs.

Ryan Thornburg
Project Manager
Charlotte-Mecklenburg Schools
3301 Stafford Dr.,
Charlotte, NC 28208
704.996.1414
Ryan1.Thornburg@cms.k12.nc.us
charmeckschools.org/bond



From: Jacquelyn Satterwhite <jacquelynsatterwhite@ls3p.com>
Sent: Tuesday, July 9, 2024 1:09 PM
To: Ryan 1. Thornburg <ryan1.thornburg@cms.k12.nc.us>
Cc: Kenneth B. Brown <kenneth.brown@cms.k12.nc.us>
Subject: 9201-224030- CMS NWSA - New Building and Renovation - SPLIT-SYSTEM AIR-CONDITIONERS - PD

CAUTION: This email originated from outside the CMS organization. Do not click links, give sensitive information, or open attachments unless verified. Forward all suspicious email to spam@cms.k12.nc.us.



Project: 9201-224030 **CMS NWSA - New Building and Renovation**

Notification about Submittal **SPLIT-SYSTEM AIR-CONDITIONERS - PD**

This email contains a Submittal for the following people to review: Ryan Thornburg

Please respond to this email with your comments. The Submittal transmittal is attached to the email.

Remarks

NOTE: Received 2 files from Procore at 02:20 PM EDT on 07/08/2024. Any changes made to the Submittal in Procore after this time are not shown in Newforma.

Procore Due Date:
07/23/2024

General Description:

A. Product Data: For each type of product indicated. Include rated capacities, operating characteristics, and furnished specialties and accessories. Include performance data in terms of capacities, outlet velocities, static pressures, sound power characteristics, motor requirements, and electrical characteristics.

Workflow Comments:

Submittal Info

To: **Ryan Thornburg**
From: **Jacquelyn Satterwhite (LS3P)**
CC: **Kenneth B. Brown**
Purpose: **For Review and Comment**
Sender ID: **23 81 26-1-0**

Transferred Files

23 81 26 - Split System Air Conditioners - PD.pdf	7/8/2024	2:58 PM	10,124 KB
23 81 26-1-0 - Submittal Form.pdf	7/8/2024	2:58 PM	91 KB

Notification generated by Newforma® Project Center

Jacquelyn Satterwhite
Assistant Construction Administrator | Senior Associate

LS3P

227 W. Trade Street, Suite 700, Charlotte, NC 28202 704.333.6686 (O) 704.371.7875 (D)
CHARLESTON | COLUMBIA | GREENVILLE | MYRTLE
BEACH | ASHEVILLE | CHARLOTTE | GREENSBORO | RALEIGH | WILMINGTON | ATLANTA | SAVANNAH | JACKSONVILLE



Submittal Transmittal

LS3P | 227 West Trade Street Suite 700 Charlotte NC 28202 United States

PROJECT: CMS NWSA - New Building and Renovation 9201-224030 DATE SENT: 7/8/2024
 RETURN BY: 7/15/2024
 SUBJECT: SPLIT-SYSTEM AIR-CONDITIONERS - PD SUBMITTAL ID: 238126-1-0
 TYPE: Submittal TRANSMITTAL ID: 00284
 PURPOSE: For Review and Comment VIA: Info Exchange
 SPEC SECTION: 23 81 26

FROM

NAME	COMPANY	EMAIL	PHONE
Jacquelyn Satterwhite	LS3P	JacquelynSatterwhite@ls3p.com	704-333-6686

TO

NAME	COMPANY	EMAIL	PHONE
CLT Admin	CMTA	cltsupport@cmta.com	704-376-7072
Scott Willard	CMTA	Swillard@cmta.com	704.376.7072
Jay Wilson	KLG Jones Building Commissioning	jwilson@klgjones.com	(864) 580-9734
Judy White	KLG Jones Building Commissioning	jwhite@klgjones.com	(864) 848-6116

REMARKS:

NOTE: Received 2 files from Procore at 02:20 PM EDT on 07/08/2024. Any changes made to the Submittal in Procore after this time are not shown in Newforma.

Procore Due Date:
07/23/2024

General Description:

A. Product Data: For each type of product indicated. Include rated capacities, operating characteristics, and furnished specialties and accessories. Include performance data in terms of capacities, outlet velocities, static pressures, sound power characteristics, motor requirements, and electrical characteristics.

Workflow Comments:

DESCRIPTION OF CONTENTS

Submittal Transmittal

DATE: 7/8/2024

ID: 00284

QTY	DATED	TITLE	NUMBER	NOTES
1	7/8/2024	23 81 26 - Split System Air Conditioners - PD.pdf		
1	7/8/2024	23 81 26-1-0 - Submittal Form.pdf		

Balfour Beatty Construction, LLC
 1930 Camden Rd, Suite 280
 Charlotte, North Carolina 28203
 Phone: (704) 319-4000

Project: 17473001 - Northwest School Project 2
 1414 Beatties Ford Rd
 Charlotte, North Carolina 28216-4549

SPLIT-SYSTEM AIR-CONDITIONERS - Product Data

SPEC SECTION:	23 81 26 - SPLIT-SYSTEM AIR-CONDITIONERS	SUBMITTAL MANAGER:	Candace Parrish (Balfour Beatty)
STATUS:	Submitted to AE	DATE CREATED:	06/3/2024
ISSUE DATE:		REVISION:	0
RESPONSIBLE CONTRACTOR:	PC Godfrey (Charlotte)	RECEIVED FROM:	Lee Parks
RECEIVED DATE:		SUBMIT BY:	
FINAL DUE DATE:	07/23/2024	LOCATION:	
SUB JOB:		COST CODE:	
APPROVERS:	Candace Parrish (Balfour Beatty), Bryan Manipole (LS3P Associates, LTD), Jacquelyn Satterwhite (LS3P Associates, LTD)		
BALL IN COURT:	Bryan Manipole (LS3P Associates, LTD), Jacquelyn Satterwhite (LS3P Associates, LTD)		
DISTRIBUTION:			
DESCRIPTION:	A. Product Data: For each type of product indicated. Include rated capacities, operating characteristics, and furnished specialties and accessories. Include performance data in terms of capacities, outlet velocities, static pressures, sound power characteristics, motor requirements, and electrical characteristics.		
ATTACHMENTS:			

SUBMITTAL WORKFLOW

REVIEWER NAME	DUE DATE	RESPONSE DATE	RESPONSE	ATTACHMENTS	COMMENTS
Candace Parrish	7/8/2024	7/8/2024	BBC Reviewed	23 81 26 - Split System Air Conditioners - PD.pdf	
Bryan Manipole	7/23/2024		Pending		
Jacquelyn Satterwhite	7/23/2024		Pending		

BY _____ DATE _____ COPIES TO _____

View Date:

Submittal No. / Revision: 23 81 26-1 0 Subcontractor/Supplier: PC Godfrey (Charlotte)	Description: SPLIT-SYSTEM AIR-CONDITIONERS - Product Data
Submittal Type: Product Data Spec. Section & Paragraph No.: 23 81 26	Required on site by: Required lead time: Status: Submitted to AE
Notes: A. Product Data: For each type of product indicated. Include rated capacities, operating characteristics, and furnished specialties and accessories. Include performance data in terms of capacities, outlet velocities, static pressures, sound power characteristics, motor requirements, and electrical characteristics.	

PC Godfrey (Charlotte)	Balfour Beatty Construction, LLC Stamp
Submittal No. / Revision: 23 81 26-1 0 Description: SPLIT-SYSTEM AIR-CONDITIONERS - Product Data Subcontractor certifies that review, approval, verification of products required, field dimensions, adjacent construction work, and coordination of information is in accordance with the requirements of the work and contract documents. Submitted By: Lee Parks Date:	<p style="color: green;">This submittal has been reviewed for general compliance with the plans and specification. This review and the response indicated below does not relieve subcontractor/ supplier of any contractual responsibilities including the furnishing of all items required by the contract documents and the confirmation of all quantities and dimensions.</p> <p style="color: green;">Submittal No.: 23 81 26-1 0 Description: SPLIT-SYSTEM AIR-CONDITIONERS - Product Data Reviewed by: Candace Parrish Date:</p>
Stamp	Consultant Stamp
A/E Response: Date:	
Consultant Stamp	Consultant Stamp

View Date:

Submittal No. / Revision: 23 81 26-1 0 Subcontractor/Supplier: PC Godfrey (Charlotte)	Description: SPLIT-SYSTEM AIR-CONDITIONERS - Product Data
Submittal Type: Product Data Spec. Section & Paragraph No.: 23 81 26	Required on site by: Required lead time: Status: Submitted to AE
Notes: A. Product Data: For each type of product indicated. Include rated capacities, operating characteristics, and furnished specialties and accessories. Include performance data in terms of capacities, outlet velocities, static pressures, sound power characteristics, motor requirements, and electrical characteristics.	

PC Godfrey (Charlotte)	Balfour Beatty Construction, LLC Stamp
Submittal No. / Revision: 23 81 26-1 0 Description: SPLIT-SYSTEM AIR-CONDITIONERS - Product Data Subcontractor certifies that review, approval, verification of products required, field dimensions, adjacent construction work, and coordination of information is in accordance with the requirements of the work and contract documents. Submitted By: Lee Parks Date:	<p style="color: green;">This submittal has been reviewed for general compliance with the plans and specification. This review and the response indicated below does not relieve subcontractor/ supplier of any contractual responsibilities including the furnishing of all items required by the contract documents and the confirmation of all quantities and dimensions.</p> <p style="color: green;">Submittal No.: 23 81 26-1 0 Description: SPLIT-SYSTEM AIR-CONDITIONERS - Product Data Reviewed by: Candace Parrish Date: 7/8/24</p>
Stamp	Consultant Stamp
A/E Response: Date:	
Consultant Stamp	Consultant Stamp

Balfour Beatty Construction, LLC
 1930 Camden Rd, Suite 280
 Charlotte, North Carolina 28203
 Phone: (704) 319-4000

Project: 17473001 - Northwest School Project 2
 1414 Beatties Ford Rd
 Charlotte, North Carolina 28216-4549

SPLIT-SYSTEM AIR-CONDITIONERS - Product Data

SPEC SECTION:	23 81 26 - SPLIT-SYSTEM AIR-CONDITIONERS	SUBMITTAL MANAGER:	Candace Parrish (Balfour Beatty)
STATUS:	Submitted to AE	DATE CREATED:	06/3/2024
ISSUE DATE:		REVISION:	0
RESPONSIBLE CONTRACTOR:	PC Godfrey (Charlotte)	RECEIVED FROM:	Lee Parks
RECEIVED DATE:		SUBMIT BY:	
FINAL DUE DATE:	07/23/2024	LOCATION:	
SUB JOB:		COST CODE:	
APPROVERS:	Candace Parrish (Balfour Beatty), Bryan Manipole (LS3P Associates, LTD), Jacquelyn Satterwhite (LS3P Associates, LTD)		
BALL IN COURT:	Candace Parrish (Balfour Beatty)		
DISTRIBUTION:			
DESCRIPTION:	A. Product Data: For each type of product indicated. Include rated capacities, operating characteristics, and furnished specialties and accessories. Include performance data in terms of capacities, outlet velocities, static pressures, sound power characteristics, motor requirements, and electrical characteristics.		
ATTACHMENTS:			

SUBMITTAL WORKFLOW

REVIEWER NAME	DUE DATE	RESPONSE DATE	RESPONSE	ATTACHMENTS	COMMENTS
Candace Parrish	7/8/2024		Pending		
Bryan Manipole	7/23/2024		Pending		
Jacquelyn Satterwhite	7/23/2024		Pending		

BY _____ DATE _____ COPIES TO _____

SUBMITTAL

238126 SPLIT-SYSTEM AIR-CONDITIONERS



Submittal

Prepared For:
P.C. Godfrey
Attn: Lee Parks

Date: July 03, 2024

Engineer:
CMTA Engineers
Zachary Schneider, P.E.

Job Name:
CMS Northwest School of Arts New Building and Renovations
1415 Beatties Ford Road, Charlotte, NC

Trane U.S. Inc. is pleased to provide the following submittal for your review and approval.

Product Summary

Qty Product
5 - Ductless Split Systems (P Series)

Notes:

1. This submittal is based on mechanical specs and drawings issued 02-05-2024.
2. These ductless split systems each require one (1) electrical power feed to their respective outdoor units. The indoor units are then powered from the outdoor units. All wiring and overcurrent protection is provided and installed by others. **All code and electrical requirements should be closely coordinated with electrical contractor prior to installation.**
3. Installer shall confirm all piping distances and stay within the guidelines shown in this submittal. The maximum allowable linear pipe footage between indoor & outdoor units shall NOT exceed published data. NOTE: Refrigerant piping provided by others.
4. The following items are not included by Trane unless noted otherwise:
 - a. *Equipment startup*
 - b. *Support rails and/or supports*
 - c. *Coating of cabinet and coils*
 - d. *Seismic restraints*

Jeff Auten
Trane U.S. Inc.
4501 South Tryon Street
Charlotte, NC 28217
Office Phone: (704) 525-9600

The attached information describes the equipment we propose to furnish for this project and is submitted for your approval.
Submittal acceptance and return is a critical step, so please ensure submittals are returned with approval to release to production within 14 days of submittal date.

Table of Contents

Product Summary	1
Ductless Split (P Series) (Items A1 - A4)	3
Tag Data	3
Product Data.....	3
Dimensional Drawings	4

Tag Data - Ductless Split (P Series) (Qty: 4)

Item	Tag(s)	Qty	Description	Building	Equipment Schedule Drawing #	Indoor Location Drawing #	Indoor Unit Room #	Outdoor Location Drawing #
A1	CU-12 / WM-12	1	1-Ton High Wall Cooling-Only	C	M104.C	M302.C	C231	M304.C
A2	CU-18 / WM-18	1	1.5-Ton High Wall Cooling-Only	E	M104.E	M401.E	E147	M403.E
A3	CU-12 / WMU-012	1	1-Ton High Wall Cooling-Only	G	M104	M202	G233	M204
A4	CU-12 / WMU-012	1	1-Ton High Wall Cooling-Only	G	M104	M203	G339	M204
A5	CU-30 / WMU-030	1	2.5-Ton High Wall Heat Pump	G	M104	M201	G137	M204

Product Data - Ductless Split (P Series)

All Units

TAC-YT53CRAU-J wall mounted wired remote controller (Field Installed)
 BACnet and Modbus interface (Field Installed)
 SS610E condensate drain pan overflow switch (Field Installed)

Item: A1, A3, A4 Qty: 3 Tag(s): CU-12 / WM-12, CU-12 / WMU-012

TRUYA0121KA70NA cooling only outdoor unit
 12 MBH nominal cooling capacity
 208-230 volts, 1 phase
 (1) WB-PA4 wind baffle (Field Installed)
 TPKA0A0121LA10A wall mounted indoor unit

Item: A2 Qty: 1 Tag(s): CU-18 / WM-18

TRUYA0181KA70NA cooling only outdoor unit
 18 MBH nominal cooling capacity
 208-230 volts, 1 phase
 (1) WB-PA4 wind baffle (Field Installed)
 TPKA0A0181LA10A wall mounted indoor unit

Item: A5 Qty: 1 Tag(s): CU-30 / WMU-30

TRUZA0301HA70NA heat pump outdoor unit
 30 MBH nominal cooling capacity
 208-230 volts, 1 phase
 (1) WB-PA5 wind baffle (Field Installed)
 TPKA0A0301KA80A wall mounted indoor unit

TPKA0A0121LA10A & TRUYA0121KA70NA
12,000 BTU/H WALL MOUNT
12,000 BTU/H COOLING ONLY OUTDOOR



Job Name:

System Reference:

Date:



Indoor Unit.....TPKA0A0121LA10A

Outdoor Unit.....TRUYA0121KA70NA



Qty: 3

Tag(s): CU-12_C / WM-12_C,
(2) CU-12_G / WMU-012_G

INDOOR UNIT FEATURES

- Selectable high sensible vs high latent capacity mode
- UL 60335-2-40 compliant
- Sleek, compact design
- Simple installation
- Airflow direction control
- Auto fan mode
- Suitable for: server rooms, daycare centers, classrooms, churches, small offices, and more
- Multiple control options available:
 - kumo cloud® smart device app for remote access
 - Third-party interface options
 - Wired or wireless controllers

OUTDOOR UNIT FEATURES

- Variable speed INVERTER-driven compressor
- Pre-charged with refrigerant volume for piping length up to 70 ft
- Low ambient cooling down to 0°F providing 100% capacity (with wind baffles)
- 24-hour continuous operation (cooling mode)
- High pressure protection
- Fast restart
- Superior energy and operational efficiency
- Seacoast protection*
 - External Outer Panel: Phosphate coating + Acrylic-Enamel coating
 - Fan Motor Support: Epoxy resin coating (at edge face)
 - Separator Assembly Valve Bed: Epoxy resin coating (at edge face)
 - Blue Fin treatment is an anti-corrosion treatment that is applied to the Heat exchanger coil to protect it against airborne contaminants.
 - Heat exchanger coil and base panel rated for 2,000 hours in accordance with ASTM B117 testing
- Seacoast protection standard from 2022 production

SPECIFICATIONS: TPKA0A0121LA10A & TRUYA0121KA70NA

Cooling at 95°F ¹	Maximum Capacity	BTU/H	12,000
	Rated Capacity	BTU/H	12,000
	Minimum Capacity	BTU/H	4,400
	Maximum Power Input	W	900
	Rated Power Input	W	900
	Moisture Removal	Pints/h	2.7
	Sensible Heat Factor		0.88
Efficiency	Power Factor [208V / 230V]	%	92.5 / 92.5
	SEER2		21.3
	EER2 ¹		13.3
	HSPF2 [IV]		—
Electrical	ENERGY STAR® Certified		Yes
	Voltage, Phase, Frequency		208/230, 1, 60
	Guaranteed Voltage Range	V AC	198 - 253
	Voltage: Indoor - Outdoor, S1-S2	V AC	208/230
	Voltage: Indoor - Outdoor, S2-S3	V DC	24
	Short-circuit Current Rating [SCCR]	kA	5
	Recommended Fuse/Breaker Size (Outdoor)	A	15
	Recommended Wire Size [Indoor - Outdoor]	AWG	14
	Power Supply		Indoor unit is powered by the outdoor unit
	MCA	A	1.0
	Fan Motor Full Load Amperage	A	0.19
	Fan Motor Output	W	30
	Fan Motor Type		DC Motor
	Airflow Rate at Cooling, Dry	CFM	265–290–325–385
	Airflow Rate at Cooling, Wet	CFM	215–255–320–375
	Airflow Rate at Heating, Dry	CFM	265–290–325–385
	Sound Pressure Level [Cooling]	dB[A]	34–39–44–48
	Sound Pressure Level [Heating]	dB[A]	34–37–40–43
	Drain Pipe Size	In. [mm]	5/8 [16]
	Coating on Heat Exchanger		—
External Finish Color		White Munsell 0.7PB 9.2/0.4	
Unit Dimensions	W x D x H: In. [mm]	35-23/64 x 9-11/32 x 11-25/32 [898 x 237 x 299]	
Package Dimensions	W x D x H: In. [mm]	38-3/16 x 13-25/64 x 14-11/64 [970 x 340 x 360]	
Unit Weight	Lbs. [kg]	28 [12.7]	
Package Weight	Lbs. [kg]	32 [14.4]	
Indoor Unit Operating Temperature Range	Cooling Intake Air Temp [Maximum / Minimum]*	°F	90 DB, 73 WB / 66 DB, 59 WB
	MCA	A	11.0
Outdoor Unit	MOCP	A	28
	Fan Motor Full Load Amperage	A	0.5
	Fan Motor Output	W	46
	Airflow Rate [Cooling / Heating]	CFM	1590
	Refrigerant Control		LEV
	Defrost Method		Reverse Cycle
	Coating on Heat Exchanger		Blue Fin Coating***
	Sound Pressure Level, Cooling ¹	dB(A)	44
	Compressor Type		INVERTER-driven twin rotary
	Compressor Model		SNB092FQCMC
	Compressor Rated Load Amps	A	7
	Compressor Locked Rotor Amps	A	12.0
	Compressor Oil [Type // Charge]	oz.	FV50S // 12
	External Finish Color		Ivory Munsell 3Y 7.8/1.1
	Base Pan Heater		N/A
	Unit Dimensions	W x D x H: In. [mm]	31-13/16 (+2-7/16) x 11-13/16 x 24-13/16 [809 (+62) x 300 x 630]
Package Dimensions	W x D x H: In. [mm]	37-1/16 x 16-3/16 x 27-7/16 [941 x 411 x 697]	
Unit Weight	Lbs. [kg]	92 [41]	
Package Weight	Lbs. [kg]	103 [46]	
Outdoor Unit Operating Temperature Range	Cooling Air Temp [Maximum / Minimum]*	°F	115 DB / 0 DB

E800 - Unit calls for 30 Amp. A/E- Is it acceptable to provide 15A

E800/ M104 calls for 208V and 30A and MCA 7.7

A/E - Is 11.0 MCA acceptable

NOTES:

AHRI Rated Conditions

¹Cooling (Indoor // Outdoor)

°F 80 DB, 67 WB // 95 DB, 75 WB

Select high sensible versus high latent capacity mode via function setting mode 08, "Fan speed" (accessible through Touch MA, Deluxe MA, kumo touch and kumo cloud app control options):

- "High ceiling" mode = high sensible capacity
 - » Mode 08, setting 3 (factory default)
- "Standard" mode = high latent capacity
 - » Mode 08, setting 2

*Indoor/Outdoor Unit Operating Temperature Range (Cooling Air Temp [Maximum / Minimum]):

- Wind baffles required to operate below 23°F DB in cooling mode.
- Heat pump system with wind baffle: 0°F - 115°F.
- Refer to wind baffle documentation for further information.

**Outdoor Unit Operating Temperature Range (Cooling Thermal Lock-out / Re-start Temperatures; Heating Thermal Lock-out / Re-start Temperatures):

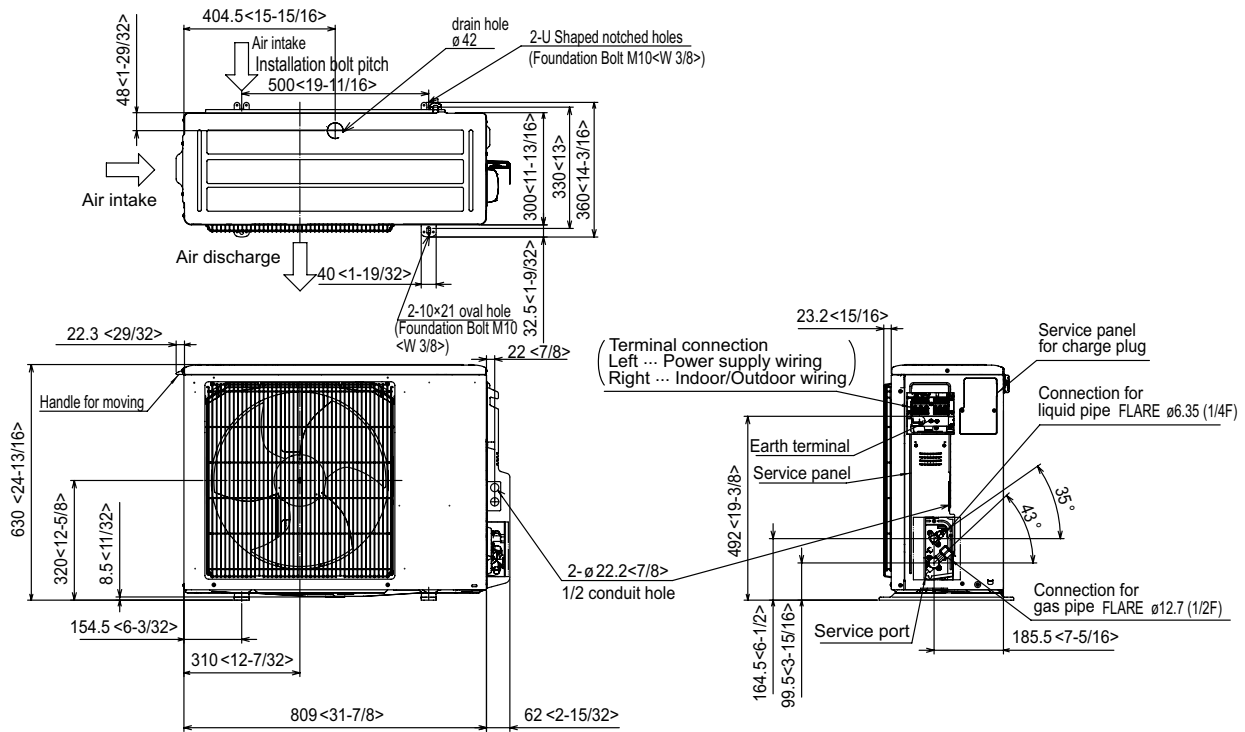
- System cuts out in heating mode to avoid thermistor error and automatically restarts at these temperatures.

***Blue Fin Coating Standard from 2022 production:

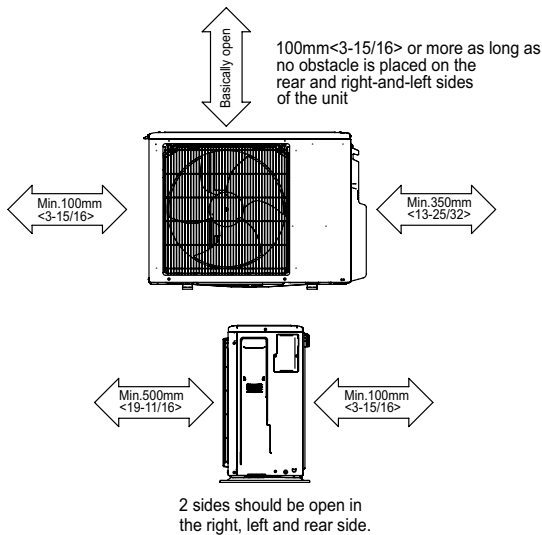
- PU(Y/Z)-A(12/18)NKA7 - Beginning with serial number 12U*****
- PU(Y/Z)-A(24/30/36/42)NKA7 - Beginning with serial number 12U*****

OUTDOOR UNIT DIMENSIONS: TRUYA0121KA70NA

Unit: mm<in>



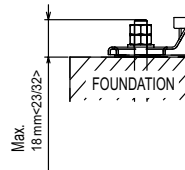
Free space around the outdoor unit (basic example)



FOUNDATION BOLTS

Please secure the unit firmly with 4 foundation (M10<W3/8>) bolts. (Bolts, washers and nut must be purchased locally).

<Foundation bolt height>



PIPING-WIRING DIRECTION

Piping and wiring connection can be made from the rear direction only.

TPKA0A0181LA10A & TRUYA0181KA70NA
18,000 BTU/H WALL MOUNT
18,000 BTU/H COOLING ONLY OUTDOOR



Job Name:

System Reference:

Date:



Indoor Unit.....TPKA0A0181LA10A

Outdoor Unit.....TRUYA0181KA70NA



Qty: 1
Tag: CU-18 / WM-18

INDOOR UNIT FEATURES

- Selectable high sensible vs high latent capacity mode
- UL 60335-2-40 compliant
- Sleek, compact design
- Simple installation
- Airflow direction control
- Auto fan mode
- Suitable for: server rooms, daycare centers, classrooms, churches, small offices, and more
- Multiple control options available:
 - kumo cloud® smart device app for remote access
 - Third-party interface options
 - Wired or wireless controllers

OUTDOOR UNIT FEATURES

- Variable speed INVERTER-driven compressor
- Pre-charged with refrigerant volume for piping length up to 70 ft
- Low ambient cooling down to 0°F providing 100% capacity (with wind baffles)
- 24-hour continuous operation (cooling mode)
- High pressure protection
- Fast restart
- Superior energy and operational efficiency
- Seacoast protection*
 - External Outer Panel: Phosphate coating + Acrylic-Enamel coating
 - Fan Motor Support: Epoxy resin coating (at edge face)
 - Separator Assembly Valve Bed: Epoxy resin coating (at edge face)
 - Blue Fin treatment is an anti-corrosion treatment that is applied to the Heat exchanger coil to protect it against airborne contaminants.
 - Heat exchanger coil and base panel rated for 2,000 hours in accordance with ASTM B117 testing
- Seacoast protection standard from 2022 production

SPECIFICATIONS: TPKA0A0181LA10A & TRUYA0181KA70NA

Cooling at 95°F ¹	Maximum Capacity	BTU/H	18,000
	Rated Capacity	BTU/H	18,000
	Minimum Capacity	BTU/H	5,600
	Maximum Power Input	W	1,680
	Rated Power Input	W	1,680
	Moisture Removal	Pints/h	5.8
	Sensible Heat Factor		0.73
Efficiency	SEER2		20.2
	EER2 ¹		10.7
	HSPF2 [IV]		—
	ENERGY STAR® Certified		No
Electrical	Voltage, Phase, Frequency		208/230, 1, 60
	Guaranteed Voltage Range	V AC	198 - 253
	Voltage: Indoor - Outdoor, S1-S2	V AC	208/230
	Voltage: Indoor - Outdoor, S2-S3	V DC	24
	Short-circuit Current Rating [SCCR]	kA	5
	Recommended Fuse/Breaker Size (Outdoor)	A	15
	Recommended Wire Size [Indoor - Outdoor]	AWG	14
Power Supply		Indoor unit is powered by the outdoor unit	
Indoor Unit	MCA	A	1.0
	Fan Motor Full Load Amperage	A	0.19
	Fan Motor Output	W	30
	Fan Motor Type		DC Motor
	Airflow Rate at Cooling, Dry	CFM	265-310-375-450
	Airflow Rate at Cooling, Wet	CFM	215-255-320-375
	Airflow Rate at Heating, Dry	CFM	265-310-385-455
	Sound Pressure Level [Cooling]	dB[A]	34-39-44-48
	Sound Pressure Level [Heating]	dB[A]	34-39-44-48
	Drain Pipe Size	In. [mm]	5/8 [16]
	Coating on Heat Exchanger		—
	External Finish Color		White Munsell 0.7PB 9.2/0.4
	Unit Dimensions	W x D x H: In. [mm]	35-23/64 x 9-11/32 x 11-25/32 [898 x 237 x 299]
	Package Dimensions	W x D x H: In. [mm]	38-3/16 x 13-25/64 x 14-11/64 [970 x 340 x 360]
Indoor Unit Operating Temperature Range	Cooling Intake Air Temp [Maximum / Minimum]*	°F	90 DB, 73 WB / 66 DB, 59 WB
Outdoor Unit	MCA	A	11.0
	MOCP	A	28
	Fan Motor Full Load Amperage	A	0.5
	Fan Motor Output	W	46
	Airflow Rate [Cooling / Heating]	CFM	1590
	Refrigerant Control		LEV
	Defrost Method		Reverse Cycle
	Coating on Heat Exchanger		Blue Fin Coating***
	Sound Pressure Level, Cooling ¹	dB(A)	44
	Compressor Type		INVERTER-driven twin rotary
	Compressor Model		SNB130FQCMC-L1
	Compressor Rated Load Amps	A	7
	Compressor Locked Rotor Amps	A	12.0
	Compressor Oil [Type // Charge]	oz.	FV50S // 16
	External Finish Color		Ivory Munsell 3Y 7.8/1.1
	Base Pan Heater		N/A
	Unit Dimensions	W x D x H: In. [mm]	31-13/16 (2+7/16) x 11-13/16 x 24-13/16 [809 (+62) x 300 x 630]
Package Dimensions	W x D x H: In. [mm]	37-1/16 x 16-3/16 x 27-7/16 [941 x 411 x 697]	
Outdoor Unit Operating Temperature Range	Cooling Air Temp [Maximum / Minimum]*	°F	115 DB / 0 DB

E102.E - Unit calls for 30 Amp. A/E- Is it acceptable to provide 15A

NOTES:

AHRI Rated Conditions

¹Cooling (Indoor // Outdoor)

°F 80 DB, 67 WB // 95 DB, 75 WB

Select high sensible versus high latent capacity mode via function setting mode 08, "Fan speed" (accessible through Touch MA, Deluxe MA, kumo touch and kumo cloud app control options):

- "High ceiling" mode = high sensible capacity
 - » Mode 08, setting 3 (factory default)
- "Standard" mode = high latent capacity
 - » Mode 08, setting 2

*Indoor/Outdoor Unit Operating Temperature Range (Cooling Air Temp [Maximum / Minimum]):

- Wind baffles required to operate below 23°F DB in cooling mode.
- Heat pump system with wind baffle: 0°F - 115°F.
- Refer to wind baffle documentation for further information.

**Outdoor Unit Operating Temperature Range (Cooling Thermal Lock-out / Re-start Temperatures; Heating Thermal Lock-out / Re-start Temperatures):

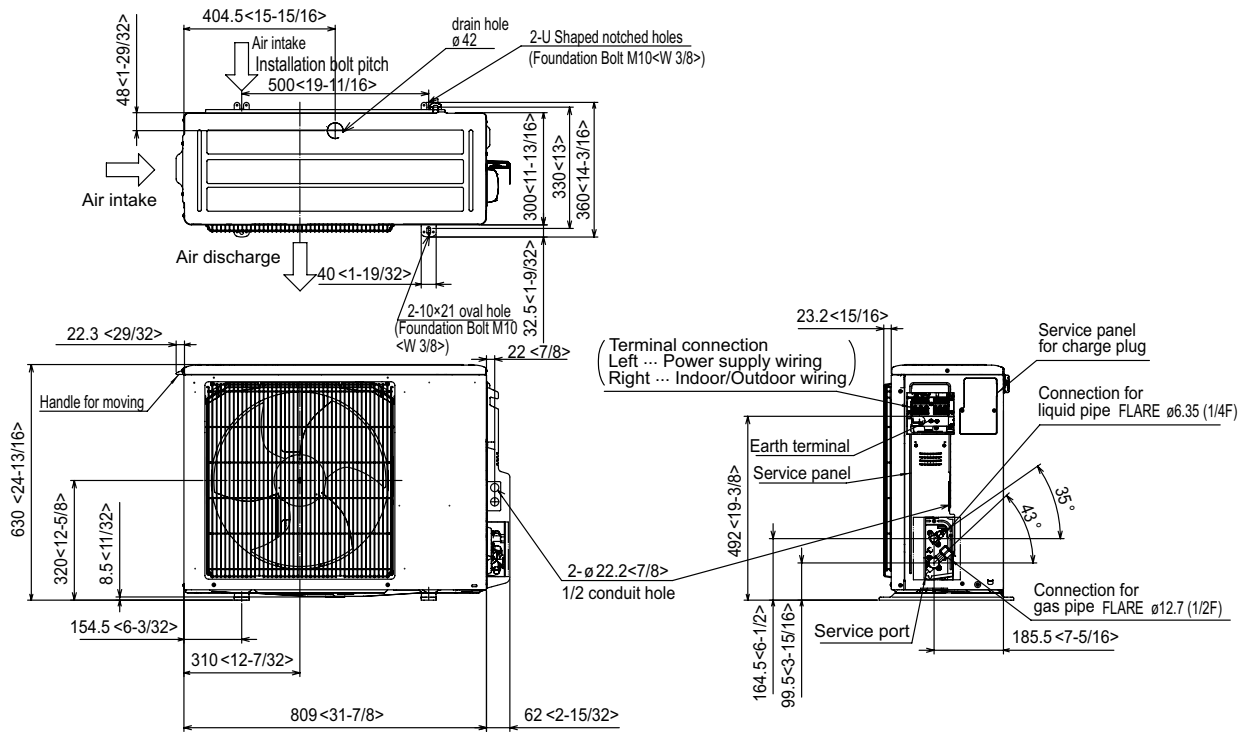
- System cuts out in heating mode to avoid thermistor error and automatically restarts at these temperatures.

***Blue Fin Coating Standard from 2022 production:

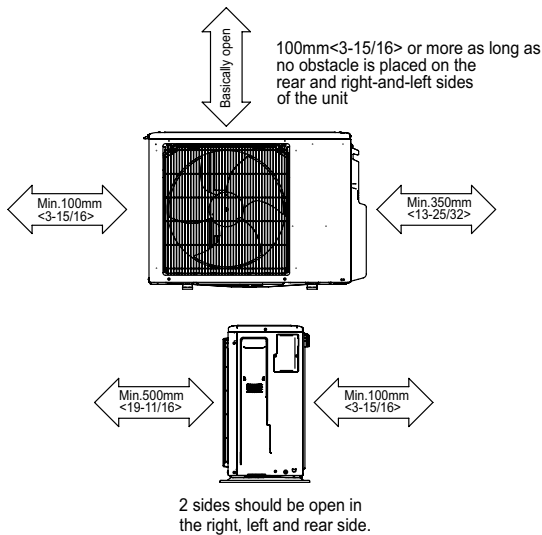
- PU(Y/Z)-A(12/18)NKA7 - Beginning with serial number 12U*****
- PU(Y/Z)-A(24/30/36/42)NKA7 - Beginning with serial number 12U*****

OUTDOOR UNIT DIMENSIONS: TRUYA0181KA70NA

Unit: mm<in>



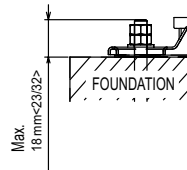
Free space around the outdoor unit (basic example)



FOUNDATION BOLTS

Please secure the unit firmly with 4 foundation (M10<W3/8>) bolts. (Bolts, washers and nut must be purchased locally).

<Foundation bolt height>



PIPING-WIRING DIRECTION

Piping and wiring connection can be made from the rear direction only.

TPKA0A0301KA80A & TRUZA0301HA70NA
30,000 BTU/H WALL-MOUNTED INDOOR UNIT
30,000 BTU/H HEAT PUMP UNIVERSAL OUTDOOR



Job Name:

System Reference:

Date:



Indoor Unit.....TPKA0A0301KA80A

Outdoor Unit.....TRUZA0301HA70NA



Qty: 1
Tag: CU-30 / WMU-30

INDOOR UNIT FEATURES

- Sleek, compact design
- Simple installation
- Vane setting for air flow direction control
- Auto fan speed mode
- Ideal for spaces such as server rooms, daycare centers, classrooms, churches, small offices, and more
- Multiple control options available:
 - kumo cloud® smart device app for remote access
 - Third-party interface options
 - Wired or wireless controllers

OUTDOOR UNIT FEATURES

- Variable speed INVERTER-driven compressor
- Pre-charged with refrigerant volume for piping length up to 70 ft
- Low ambient cooling down to 0°F providing 100% capacity
- 24-hour continuous operation (cooling mode)
- High pressure protection
- Fast restart
- Superior energy and operational efficiency
- Seacoast protection*
 - External Outer Panel: Phosphate coating + Acrylic-Enamel coating
 - Fan Motor Support: Epoxy resin coating (at edge face)
 - Separator Assembly Valve Bed: Epoxy resin coating (at edge face)
 - Blue Fin treatment is an anti-corrosion treatment that is applied to the Heat exchanger coil to protect it against airborne contaminants.
 - Heat exchanger coil and base panel rated for 2,000 hours in accordance with ASTM B117 testing

*Seacoast protection standard from 2022 production

SPECIFICATIONS: TPKA0A0301KA80A & TRUZA0301HA70NA

Cooling at 95°F ¹	Maximum Capacity	BTU/H	30,000
	Rated Capacity	BTU/H	30,000
	Minimum Capacity	BTU/H	9,000
	Maximum Power Input	W	3,150
	Rated Power Input	W	3,150
	Moisture Removal	Pints/h	8.1
	Sensible Heat Factor		0.70
Heating at 47°F ²	Power Factor [208V / 230V]	%	96.4 / 96.4
	Maximum Capacity	BTU/H	34,000
	Rated Capacity	BTU/H	32,000
	Minimum Capacity	BTU/H	8,900
	Maximum Power Input	W	2,620
	Rated Power Input	W	2,460
Heating at 17°F ³	Power Factor [208V / 230V]	%	960.0 / 960.0
	Maximum Capacity	BTU/H	21,000
	Rated Capacity	BTU/H	18,300
	Maximum Power Input	W	2,080
Efficiency	Rated Power Input	W	1,960
	SEER2		20.0
	EER2 ¹		9.5
	HSPF2 [I/V]		8.8
	COP at 47°F ²		3.81
Electrical	COP at 17°F at Maximum Capacity ³		2.96
	Voltage, Phase, Frequency		208/230, 1, 60
	Guaranteed Voltage Range	V AC	198 - 253
	Voltage: Indoor - Outdoor, S1-S2	V AC	208/230
	Voltage: Indoor - Outdoor, S2-S3	V DC	24
	Short-circuit Current Rating [SCCR]	kA	5
	Recommended Fuse/Breaker Size (Outdoor)	A	25
	Recommended Wire Size [Indoor - Outdoor]	AWG	14
	Power Supply		Indoor unit is powered by the outdoor unit
	MCA	A	1.0
	Fan Motor Full Load Amperage	A	0.265
	Fan Motor Output	W	69
	Fan Motor Type		DC Motor
	Airflow Rate at Cooling, Dry	CFM	635-705-775
	Airflow Rate at Cooling, Wet	CFM	635-705-775
	Airflow Rate at Heating, Dry	CFM	635-705-775
	Sound Pressure Level [Cooling]	dB[A]	39-42-45
	Sound Pressure Level [Heating]	dB[A]	39-42-45
	Drain Pipe Size	In. [mm]	5/8 [16]
	Coating on Heat Exchanger		—
External Finish Color		White Munsell 1.0Y 9.2/0.2	
Unit Dimensions	W x D x H: In. [mm]	46-1/16 x 11-5/8 x 14-3/8 [1,170 x 295 x 365]	
Package Dimensions	W x D x H: In. [mm]	51-3/16 x 14-11/64 x 18-1/2 [1,300 x 360 x 470]	
Unit Weight	Lbs. [kg]	46 [21]	
Package Weight	Lbs. [kg]	51 [23.2]	
Indoor Unit Operating Temperature Range	Cooling Intake Air Temp [Maximum / Minimum]*	°F	90 DB, 73 WB / 66 DB, 59 WB
	Heating Intake Air Temp [Maximum / Minimum]	°F	82 DB / 59 DB

E800 - Unit calls for 30 Amp. A/E- Is it acceptable to provide 25A

NOTES:

AHRI Rated Conditions (Rated data is determined at a fixed compressor speed)

¹ Cooling (Indoor // Outdoor)	°F	80 DB, 67 WB // 95 DB, 75 WB
² Heating at 47°F (Indoor // Outdoor)	°F	70 DB, 60 WB // 47 DB, 43 WB
³ Heating at 17°F (Indoor // Outdoor)	°F	70 DB, 60 WB // 17 DB, 15 WB

Conditions ⁴Heating at 5°F (Indoor // Outdoor) °F 70 DB, 60 WB // 5 DB, 4 WB

Select high sensible versus high latent capacity mode via function setting mode 08, "Fan speed" (accessible through Touch MA, Deluxe MA, kumo touch and kumo cloud app control options):

- "High ceiling" mode = high sensible capacity
 - » Mode 08, setting 3 (factory default)
- "Standard" mode = high latent capacity
 - » Mode 08, setting 2

*Outdoor Unit Operating Temperature Range (Cooling Air Temp (Maximum / Minimum)):

- Wind baffles required to operate below 23°F DB in cooling mode.
- Heat pump system with wind baffle: 0°F - 115°F.
- Refer to wind baffle documentation for further information.

**Outdoor Unit Operating Temperature Range (Cooling Thermal Lock-out / Re-start Temperatures; Heating Thermal Lock-out / Re-start Temperatures):

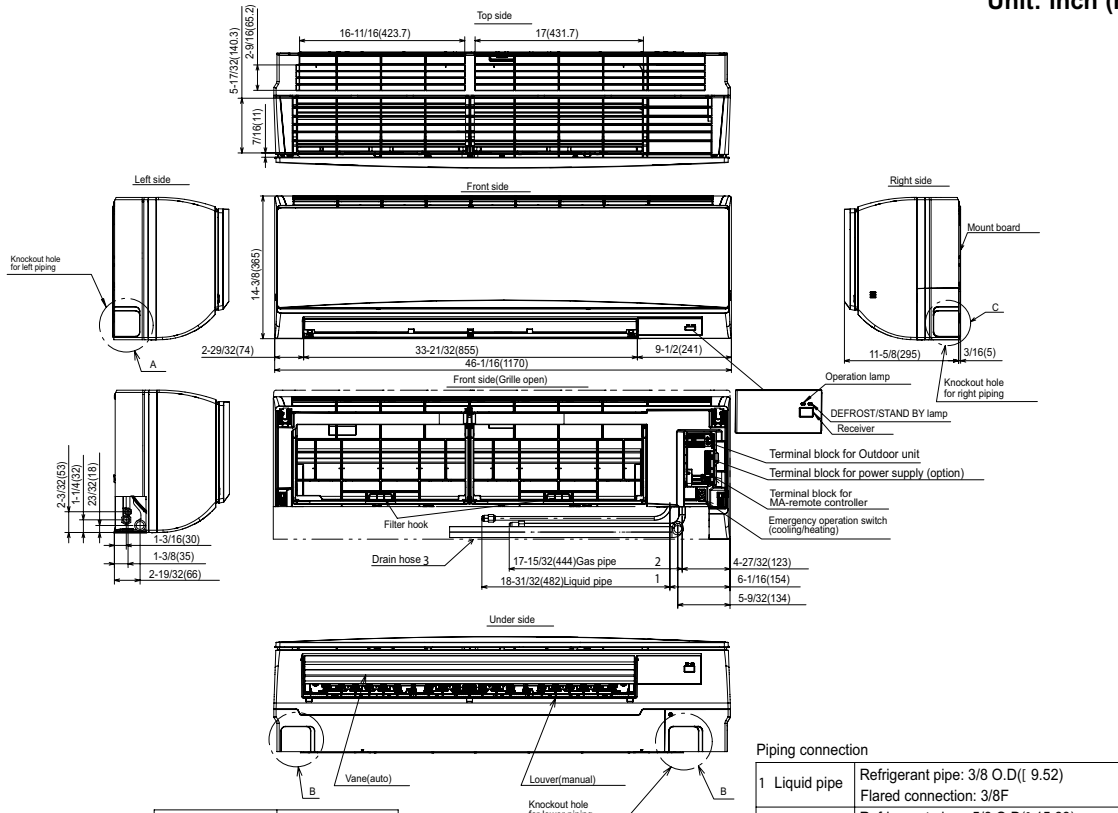
- System cuts out in heating mode to avoid thermistor error and automatically restarts at these temperatures.

***Blue Fin Coating Standard from 2022 production:

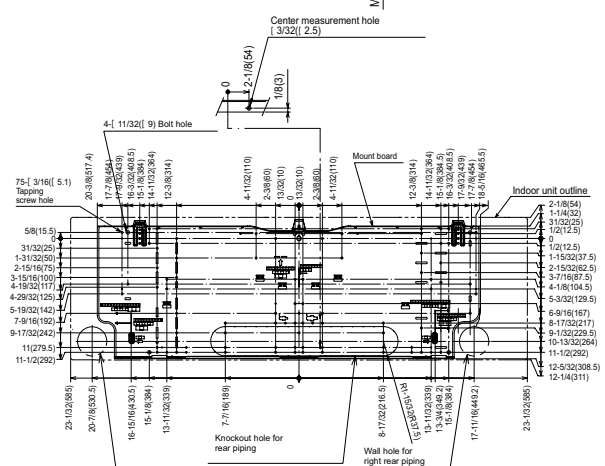
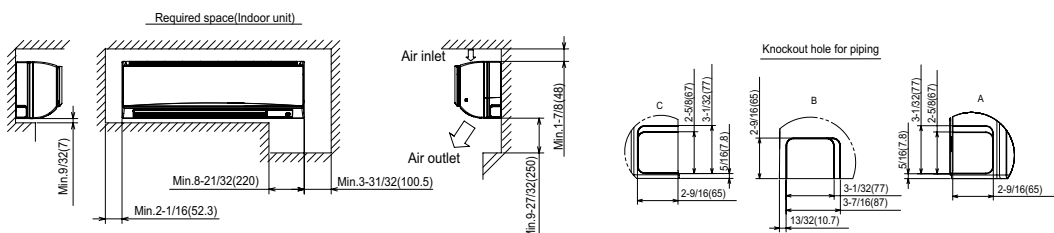
- PU(Y/Z)-A(12/18)NKA7 - Beginning with serial number 12U*****
- PU(Y/Z)-A(24/30/36/42)NKA7 - Beginning with serial number 12U*****

INDOOR UNIT DIMENSIONS: TPKA0A0301KA80A

Unit: inch (mm)



Sleeve (purchased locally)	Through hole
{ 2-15/16 (75)	{ 2-15/16- 3-5/32 (75- 80)

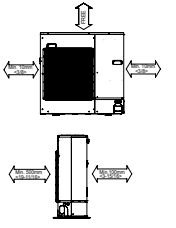


OUTDOOR UNIT DIMENSIONS: TRUZA0301HA70NA

Unit: mm<in>

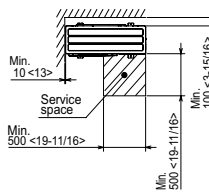
1 FREE SPACE (Around the unit)

The diagram below shows a basic example. Explanation of particular details are given in the installation manuals etc.



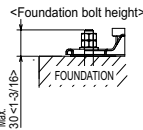
2 SERVICE SPACE

Dimensions of space needed for service access are shown in the below diagram.



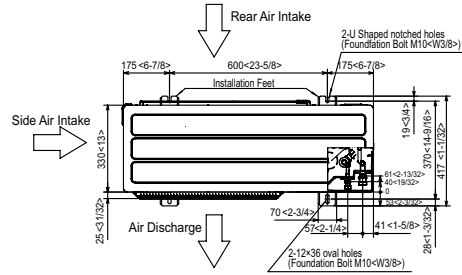
3 FOUNDATION BOLTS

Please secure the unit firmly with 4 foundation (M10<W3/8>) bolts. (Bolts and washers must be purchased locally.)



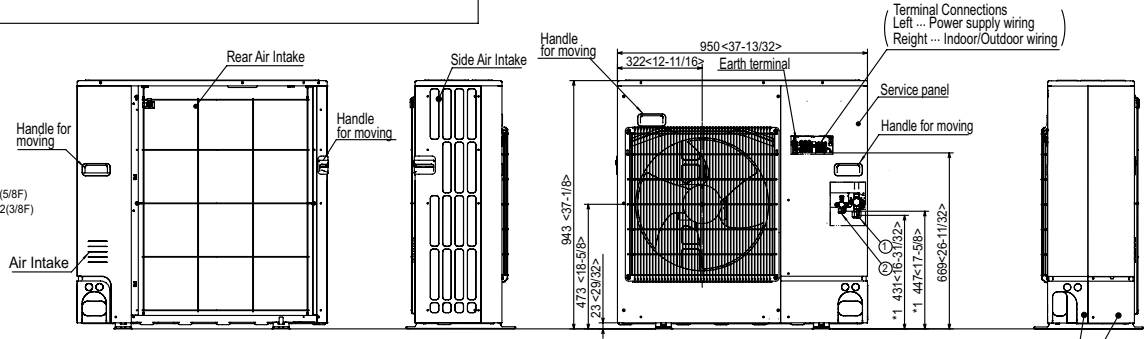
4 PIPING-WIRING DIRECTIONS

Piping and wiring connections can be made from 4 directions: FRONT, Right, Rear and Below.

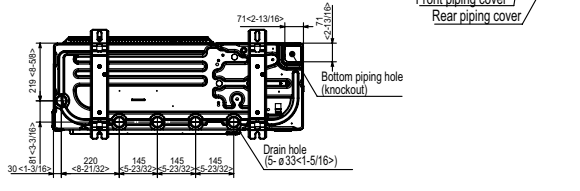
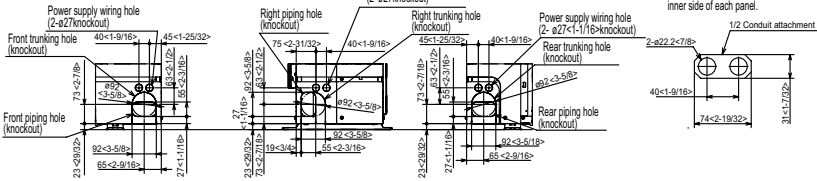


Example of Notes

- ① ... Refrigerant GAS pipe connection (FLARE) ø15.88(5/8F)
- ② ... Refrigerant LIQUID pipe connection (FLARE) ø9.52(3/8F)
- *1... Indication of STOP VALVE connection location.



Piping knockout Hole Details



WB-PA4 Front Wind Baffle



Job Name:

System Reference:

Date:



Qty: 4 (for CU-12_C, (2)
CU-12_G & CU-18)

GENERAL FEATURES

- Front Wind Baffles allow outdoor units to operate at full capacity down to the temperature ranges shown in the table below.
- Prevents wind from reversing outdoor fan rotation when unenergized.
- Durable and low maintenance construction.

PLEASE NOTE

- Install outdoor units with the back surface facing wall side to eliminate the effects of external wind
- Outdoor units should not be installed in an orientation or site where the wind blows directly at the back of the unit
- Wind baffle should not be used where there is any obstacle at either side or above the outdoor unit as the discharged air will be blocked
- Refer to outdoor unit for detailed installation instructions

SPECIFICATIONS

Exterior			
Color	Surface Treatment	Material	Weight
Matches P-Series Outdoor Unit (Ivory Munsell 3Y 7.8/1.1)	Polyester Powder Coating	Alloy Hot-Dip Zinc Coated Carbon Steel Sheet	7 Lbs. 7.9 Oz.

APPLICATION

- The Wind Baffles are used to extend the cooling temperature operation range of the TRUY, TRUZ and MX models
- The information below outlines which wind baffles to utilize per required operation range
- Please refer to the installation manual of the appropriate outdoor unit for correct installation requirements

COOLING TEMPERATURE OPERATION RANGE WITH WIND BAFFLES

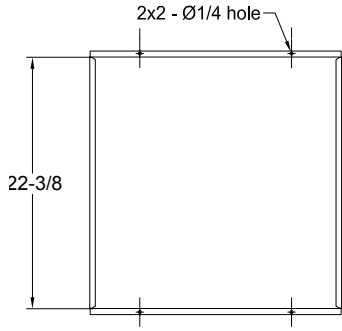
Model Series	Operation Range Without Wind Baffles	Front Wind Baffles	Front + Advanced Side + Advanced Rear Wind Baffles
TRUZ	23°F - 115°F	0°F	N/A
TRUY	23°F - 115°F	0°F	-40°F
MX	23°F - 115°F	0°F	N/A

**If unit is exposed without wall surfaces surrounding for protection from wind, then side and rear wind baffles will be required. Please refer to installation dimensions and outdoor unit installation manual for appropriate requirements.

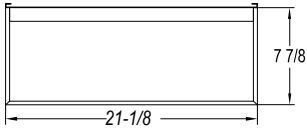
COMPATIBILITY

Single Zone	WB-PA4 (Qty)
TRUYA0121KA70(N/B)A	1
TRUYA0181KA70(N/B)A	1
TRUZA0121KA70(N/B)A	1
TRUZA0181KA70(N/B)A	1

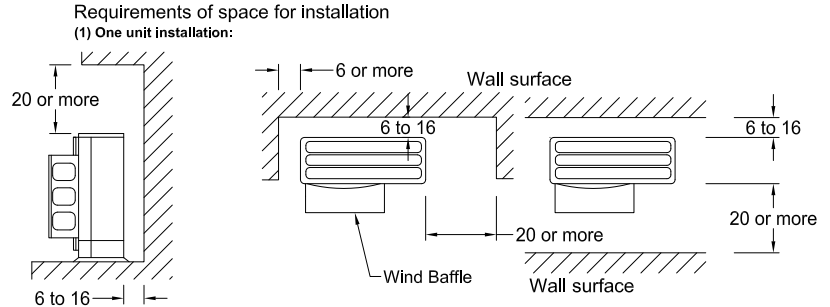
DIMENSIONS: WB-PA4



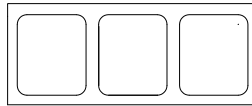
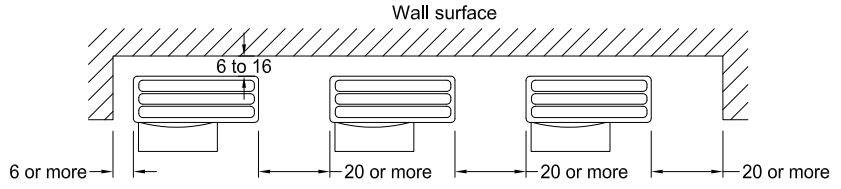
Back View



Side View



(2) Multiple Unit Installation: Installation of multiple units in series must be no more than five units.



Top View

ALL DIMENSIONS IN INCHES
ALL DIMENSIONS $\pm \frac{1}{32}$ "

WB-PA5 Front Wind Baffle



Job Name:

System Reference:

Date:



Qty: 1 (for CU-30)

GENERAL FEATURES

- Front Wind Baffles allow outdoor units to operate at full capacity down to the temperature ranges shown in the table below.
- Prevents wind from reversing outdoor fan rotation when unenergized.
- Durable and low maintenance construction.

PLEASE NOTE

- Install outdoor units with the back surface facing wall side to eliminate the effects of external wind
- Outdoor units should not be installed in an orientation or site where the wind blows directly at the back of the unit
- Wind baffle should not be used where there is any obstacle at either side or above the outdoor unit as the discharged air will be blocked
- Refer to outdoor unit for detailed installation instructions

SPECIFICATIONS

Exterior			
Color	Surface Treatment	Material	Weight
Matches P-Series Outdoor Unit (Ivory Munsell 3Y 7.8/1.1)	Polyester Powder Coating	Alloy Hot-Dip Zinc Coated Carbon Steel Sheet	8 Lbs. 8 Oz.

APPLICATION

- The Wind Baffles are used to extend the cooling temperature operation range of the TRUY, TRUZ and MX models
- The information below outlines which wind baffles to utilize per required operation range
- Please refer to the installation manual of the appropriate outdoor unit for correct installation requirements

COOLING TEMPERATURE OPERATION RANGE WITH WIND BAFFLES

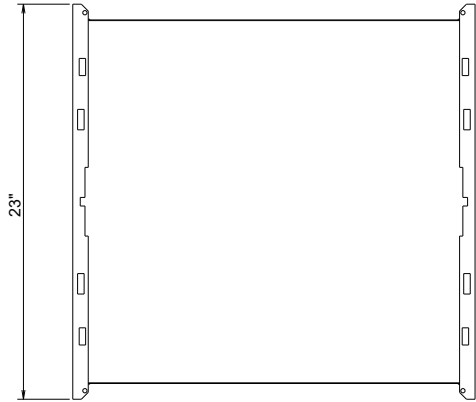
Model Series	Operation Range Without Wind Baffles	Front Wind Baffles	Front + Advanced Side + Advanced Rear Wind Baffles
TRUZ	23°F - 115°F	0°F	N/A
TRUY	23°F - 115°F	0°F	-40°F
MX	23°F - 115°F	0°F	N/A

**If unit is exposed without wall surfaces surrounding for protection from wind, then side and rear wind baffles will be required. Please refer to installation dimensions and outdoor unit installation manual for appropriate requirements.

COMPATIBILITY

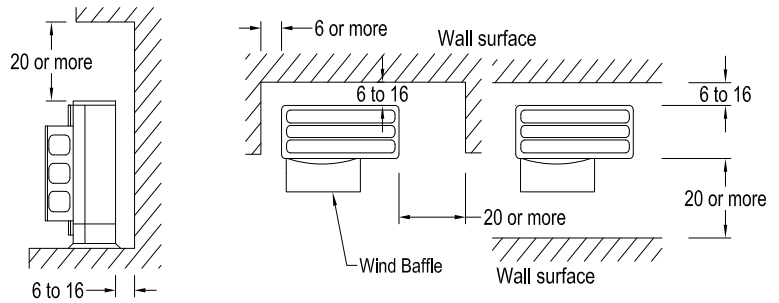
Single Zone	WB-PA5 (Qty)
TRUYA0241HA70(N/B)A	1
TRUYA0301HA70(N/B)A	1
TRUZA0241HA70(N/B)A	1
TRUZA0301HA70(N/B)A	1
TRUZH0241HA10NA	1

DIMENSIONS: WB-PA5

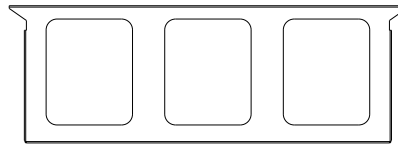
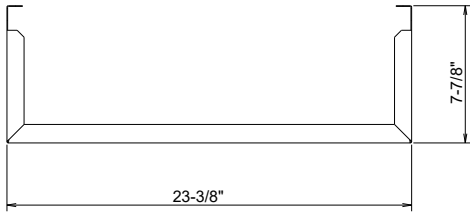
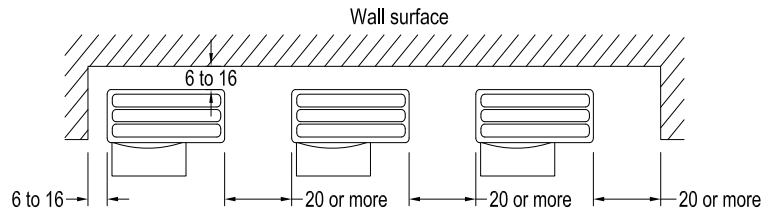


Requirements of space for installation

(1) One unit installation:



(2) Multiple Unit Installation: Installation of multiple units in series must be no more than five units.



ALL DIMENSIONS IN INCHES
ALL DIMENSION $\pm \frac{1}{32}$ "

SS610E

Drain Pan Level Sensor/Control

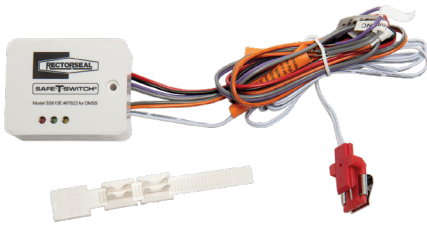


Job Name:

System Reference:

Date:

Qty: 4



COMPATIBILITY

M&P Ductless
MSZ-EF18NA(B/W/S)
MSZ-EF09NA(B/W/S)
MSZ-EF12NA(B/W/S)
MSZ-EF15NA(B/W/S)
MSZ-EF18NA(B/W/S)
NTXWEL18A112AA
NTXWEL24A112AA
NTXWMT09A112AA
NTXWMT12A112AA
NTXWMT15A112AA
NTXWMT18A112AA
NTXWMT24A112AA
NTXWMT09A111AA
NTXWMT12A111AA
NTXWEL09A112AA
NTXWEL12A112AA
NTXWPH06B112AA
NTXWPH09B112AA
NTXWPH12B112AA
NTXWPH15B112AA
NTXWPH18B112AA
NTYWST09A112AB
NTYWST12A112AB
NTYWST15A112AB
NTYWST18A112AA
NTYWST24A112AA
NTYWST30B112AA
NTYWST36B112AA
NTXWST06A112AB
NTXWST09A112AB
NTXWST12A112AB
NTXWST15A112AB
NTXWST18A112AA
NTXWST24A112AA
NTXWST30B112AA
NTXWST36B112AA
TPKA0A0121LA00A
TPKA0A0181LA00A
TPKA0A0241KA70A
TPKA0A0301KA70A
TPKA0A0361KA70A
CM Ductless
TPKFYP004LM140A
TPKFYP006LM140A
TPKFYP008LM140A
TPKFYP012LM140A
TPKFYP015LM140A
TPKFYP018LM140A
TPKFYP024KM142A
TPKFYP030KM142A

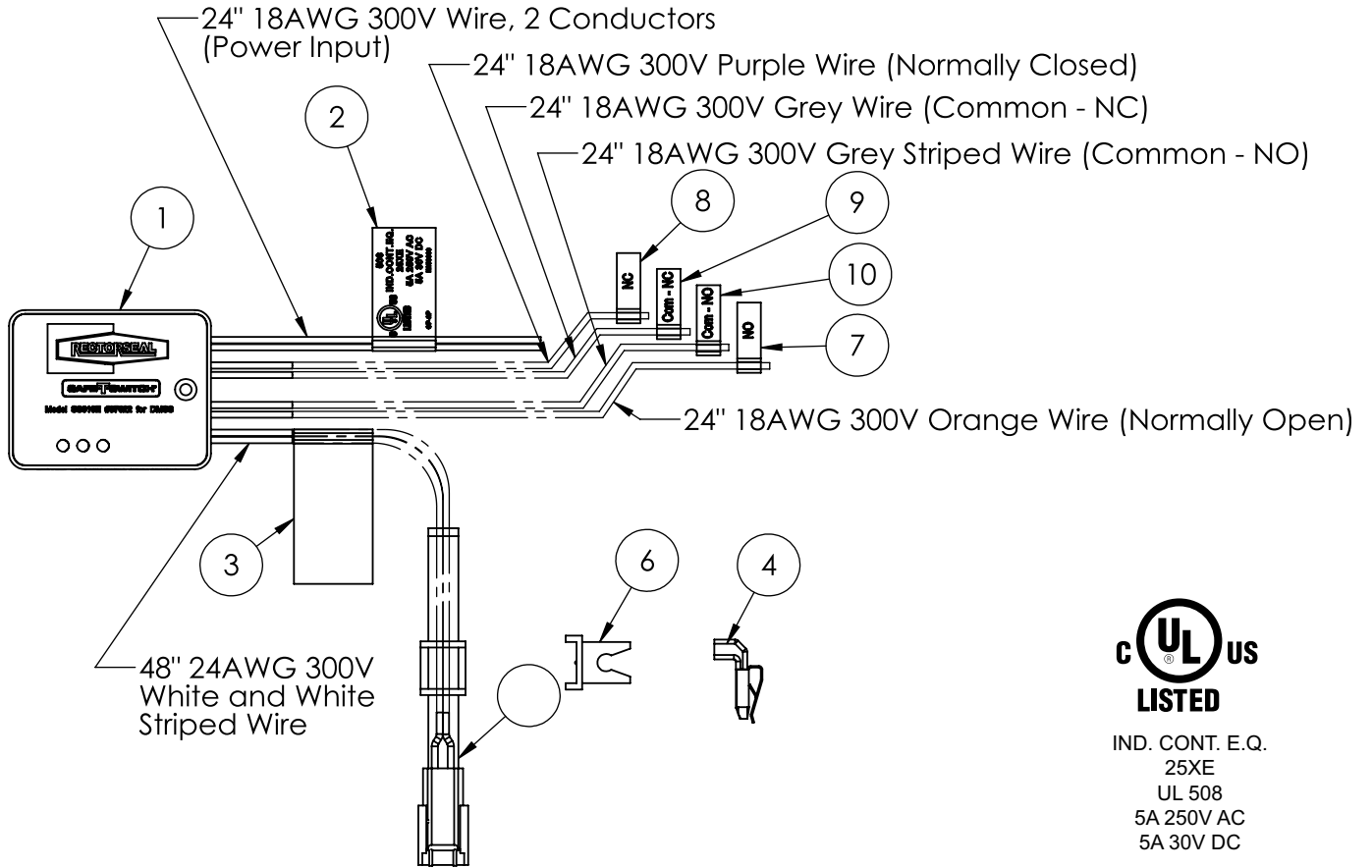
General Features

- Provides protection against drain pan overflow.
- Powered by the indoor unit and no batteries required.
- LED indicator that provides fault history.
- Can be wired in both Normally Open and Normally Closed systems.
- Installation directly on primary drain pan or clipped to coils above primary drain pan.

SPECIFICATIONS

- Power Input: 110-230VAC
- Power Consumption: 0.5W
- AC switching capacity: 0-250VAC, 5A, 1250VA max
- DC switching capacity: 0-30VDC, 5A, 150W
- Switch method: Normally Open (NO) and Normally Closed (NC)
- Switch length: 2.5in
- Switch height: 2in
- Probe cable length: 4ft
- Lead cable length: 2ft

SS610E



IND. CONT. E.Q.
25XE
UL 508
5A 250V AC
5A 30V DC

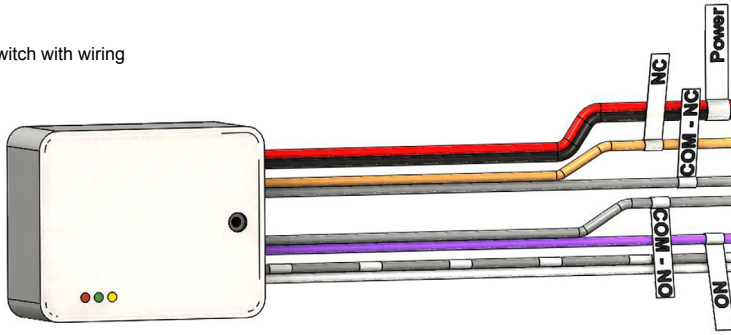
1. CP-2P
2. UL tag
3. Reset instruction tag
4. Bracket assembly
5. Ratchet assembly
6. Coil clip for 5mm
7. Tag, Normally open
8. Tag, Normally closed
9. Common Tag, Normally closed
10. Common tag, Normally open

RECTORSEAL, LLC 2601 Spenwick Dr Houston, TX 77055 800-231-3345 www.rectorseal.com			
Part Name Electronic Condensate Overflow Switch SS610E			
Tolerance	Scale		Date
XX ±1 XXX ±.01 X.XXX±.005 X.XXXX ± .0005	1:2		
	Drawing #		Revision
	ASB00483		A

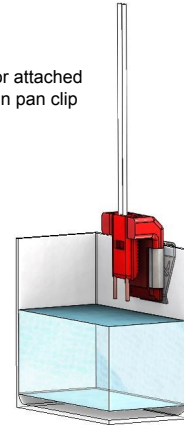
COMPONENTS AND INSTALLATION METHODS: SS610E

COMPONENTS

Switch with wiring



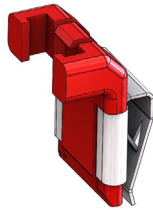
Sensor attached in drain pan clip



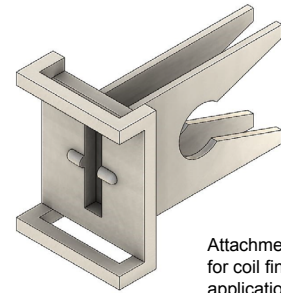
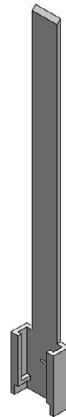
Sensor



Sensor clip for drain pan application

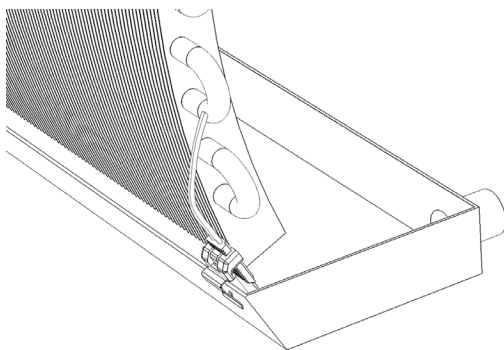


Sensor clip for coil fin application

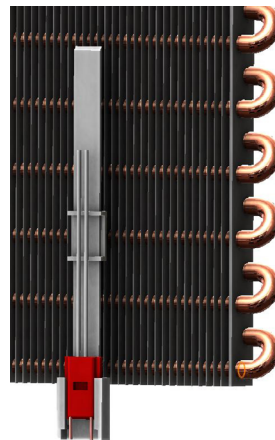


Attachment for coil fin application

Installation methods



Installation on drain pan



Installation on coil fins

FORM# T_Submittal_SS610E_DrainPanLevelSensor - 202210

Job Name:

System Reference:

Date:

PROCON MELCOBEMS MINI (A1M)

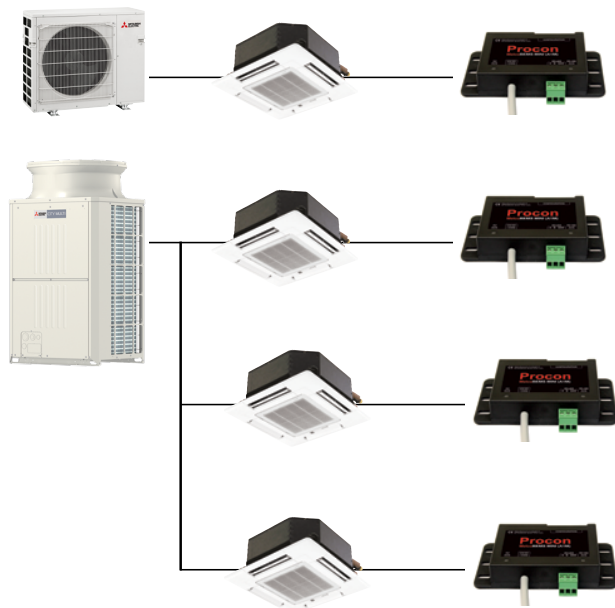
Qty: 4



SPECIFICATIONS

- Allows for a third party building management system to control a Mitsubishi Electric CITY MULTI®, M-Series, or P-Series indoor unit
- One MelcoBEMS MINI (A1M) per indoor unit
- Indoor Unit Connection: CN105 – IT Terminal
- 12VDC power from indoor unit CN105 Connector
- Compatible with MAC-333IF connector CN505 IT *requires additional 12VDC power supply
- Communication protocols supported:
 - BACnet® MSTP (RS-485) with addressing 1-127
 - MODBUS RTU (RS-485) with addressing 1-247
- LED light notification status of valid communication between:
 - Procon and Indoor unit
 - Procon and BACnet®/MODBUS networks
- Approximate cable length is 37 in. (940 mm)
- Dimensions: 3.74 x 2 x 0.75 in. (95 x 51 x 19 mm)
- Weight: 3.0 oz (85 g)

SYSTEM DIAGRAM



MODBUS POINTS TABLE

Object Type	Object Name
Commandable Points	ON/OFF
	Mode
	Setpoint
	Fan Speed
	Air Direction
Monitor Only Points	Fault Codes
	Room Temperature

BACnet® POINTS TABLE

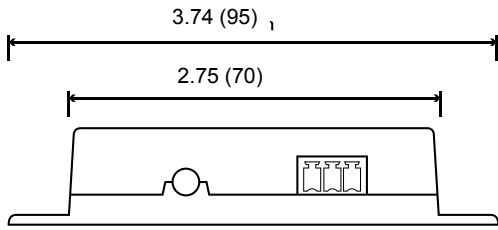
Object Type	Object Name
Commandable Points	Drive OFF/ON Setup
	Setpoint
	Mode Setup
	Fan Speed Setup
	Air Direction Setup
	Temperature Units
Monitor Only Points	Drive OFF/ON State
	Mode State
	Fan Speed State
	Air Direction State
	Inlet Temperature
	Fault Code

MODBUS POINTS TABLE

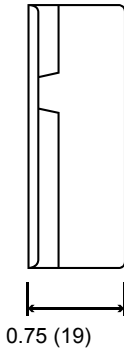
Configurable Settings	
Register Name	Modicon Address
Modbus Slave ID	40005
BACnet® Station ID	
Modbus RS-485 Baud Rate	40006
BACnet® RS-485 Baud Rate	
RS-485 Parity Type	40007
Drive On/Off	40008
Room Temperature [READ ONLY]	40009
Fault Code (hex) [READ ONLY]	40010
Firmware Version [READ ONLY]	40011
Modbus Comms Counter [READ ONLY]	40012
Fault Code (decimal) [READ ONLY]	40013
System Type Detected [READ ONLY]	40014
Deadband Enabled State [READ ONLY]	40015
BMS Room Temperature (signed)	40016
BMS Room Temperature	40017
BMS Virtual Setpoint	40018
Deadband Heating Setpoint	40019
Deadband Cooling Setpoint	40020
BACnet® Device Instance (most significant 16 bits)	40273
BACnet® Device Instance (least significant 16 bits)	40274
BACnet® Max Master	40275
BACnet® Max Info Frames	40276
BACnet® APDU Timeout	40277
BACnet® APDU Retries	40278

DIMENSIONS

Front View

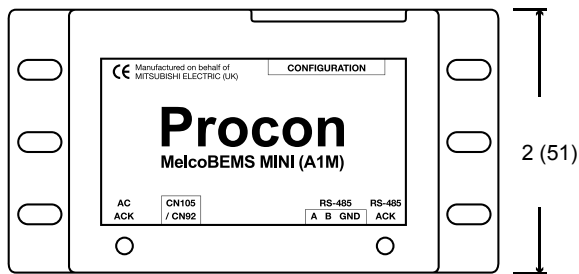


Side View



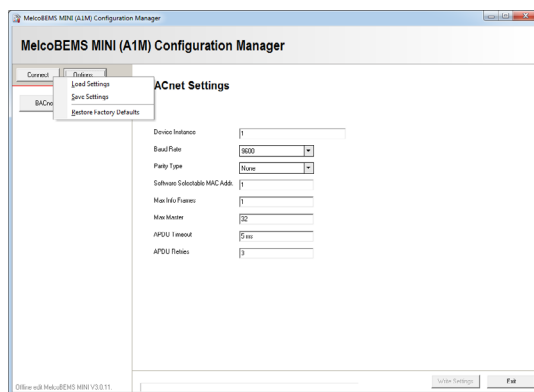
Units: in. (mm)

Top View



CONFIGURATION TOOL: MELCOBEMS MINI V1.0.1.0B.EXE

- Software downloadable from MyLinkDrive.com
- Software tool to setup BACnet® setting through Modbus Points Table
- Requires field supplied part: USB to RS-485 adapter



USB to RS-485

1340 Satellite Boulevard, Suwanee, GA 30024
Toll Free: 800-433-4822 www.mehvac.com

Job Name:

System Reference:

Date:

Qty: 4

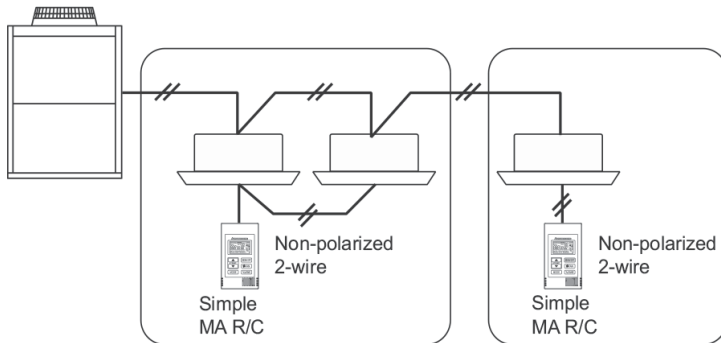


SIMPLE MA REMOTE CONTROLLER (TAC-YT53CRAU-J) SPECIFICATIONS

- Controls group operation for up to 16 indoor units in a single group
- Supports both Fahrenheit and Celsius
- User defined functions:
 - ON/OFF
 - Operation mode: AUTO (R2-Series only), COOL, HEAT, FAN, DRY, SETBACK, or ADD
 - Set temperature
 - Fan speed setting
 - Air flow direction
 - Set temperature range: depending on operation mode and indoor unit connected.
- Set temperature range limit: Simple MA allowable set temperature range can be reduced for cool and heat modes.
- LOSSNAY®: Simple MA for interlocked system can set high/low/Stop on LOSSNAY.
- Room temperature can be sensed either at the indoor unit (default) or at the remote controller.
- Diagnostics: Displays four-digit error code and error unit address.
- Grouping: Same group use only with other TAC-YT53CRAU-J Simple MA Controllers with up to two remote controllers per group.
- Addressing: No addressing required.
- Wiring: Uses two-wire, stranded, non-polar control wire for connecting TB15 connection terminal on the indoor unit.
- Requires crossover wiring for grouping across indoor units.
- Dimensions: 2-3/4 x 9/16 x 4-3/4" (70 x 14.5 x 120mm).

NOTE: A MAC-334IF-E may be needed in order to connect to the indoor unit. Please see the compatibility charts for more information.

SAMPLE SYSTEM



System example

NOTES:

DIMENSIONS: TAC-YT53CRAU-J

