

Report By:

**National TAB
1329 E Kemper Rd, Ste 4210
Cincinnati, OH 45246**



**Report: Renew
Date: 4/6/2022**

PROJECT

**FREDDY'S HCI - DURHAM, NC (3201) - RENEW 2FCB
(3)**

3303 Watkins RD.
Durham, NC 27707

Client

HCI Hospitality
520 McCall Road
Manhattan, KS 66502

Powered by



FACILIBUILD

www.facilibuild.com

National TAB

Project: FREDDY'S HCI - DURHAM, NC (3201) - RENEW 2FCB (3)

Table Of Contents

Section	Page #
Recommendation List	3
Site Pictures	4
Checklist Data	22
Summary Data	27
AHU/RTU	28
FAN - Supply	34
FAN - Exhaust	35
COIL - DX	39

RECOMMENDATION LIST

Assigned Organization: National TAB

Status: Not Submitted

Asset:

RECOMMENDATION (CLEAN/REPAIR/REPLACE/INFO)	
REPLACE	MAU filters need to be replaced. They are being ordered with the new hood filters from TriMark
REPLACE	Hood filters need to be replaced. Micah is ordering them from TriMark.
REPAIR	Walk-In Cooler evaporator is frosted over and fans are not running. A service provider needs to resolve this issue.
REPAIR	RTU-2 CONDENSATE DRAIN this drain is properly made but has been snapped. Contact your service provider to replace this item so that it drains properly.

Notes/Comments:



FROZEN LIN ON WALK IN COOLER



RTU-2 CONDENSATE DRAINE
Snapped drain



ISSUE 69

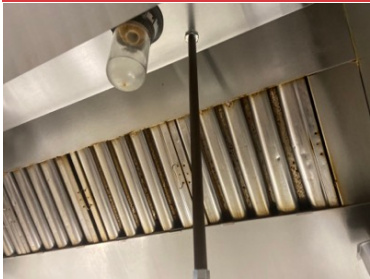


MAU OA FILTERS NEED TO BE REPLACED



FRYER HOOD HANDLES MISSING

Crew is t cleaning them because they are hard to remove and install when closing up.



FILTERS NEED TO BE CLEANED& REPLACED



HOOD NEEDS REPLACEMENT FILTERS



CLIPS MISSING ON FILTERS



HANDLES MISSING



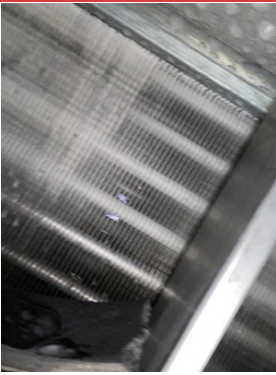
FANS NOT RUNNING WALK IN COOLER



ICE ON COILS WALK IN COOLER



ICE BUILD UP ON PEN PIPE



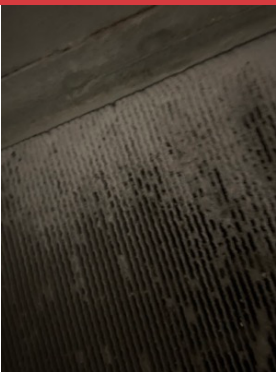
WALK IN FREEZER DIRTY



WALK IN FREEZER CLEAN



WALK IN COOLER DIRTY



WALK-IN COOLER CLEANED



MEAT COOLER DIRTY



MEAT COOLER CLEAN



PREP STATION DIRTY



PREP STATION CLEAN



FREYR DIRTY



FRYER FREEZER CONDENSER CLEAN



SUNDAY STATION DIRTY



SUNDAY STATION CLEAN



ICE MACHINE DIRTY



ICE MACHINE CLEAN



SODA MACHIN DIRTY



SODA MACHINE CLEAN



RR EX FAN
Assigned To Womens



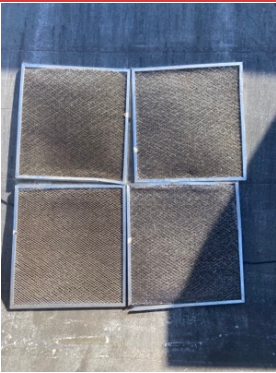
RR EX FAN
Assigned To MENS



RTU-1 OA DIRTY



RTU-1 OA CLEAN



RTU-2 OA DIRTY



RTU-2 OA CLEAN



RTU-3 OA DIRTY



RTU-3 OA CLEAN



MUA OA DIRTY



MAU OA CLEAN



RTU-1 CONDENSER DIRTY



RTU-1 CONDENSER CLEAN



RTU-2 CONDENSER DIRTY



RTU-2 CONDENSER CLEAN



RTU-3 CONDENSER DIRTY



RTU-3 CONDENSER CLEAN



ICE MACHINE CONDENSER DIRTY



ICE MACHINE CONDENSER CLEAN



SODA MACHINE CONDENSER DIRTY



SODA MACHIN CONDENSER CLEAN



WALK-IN COOLER CONDENSER DIRTY



WALK-IN COOLER CONDENSER CLEAN



WALK IN FREEZER CONDENSER DIRTY



WALK IN FREEZER CONDENSER DIRTY



RTU-1 EVAP COIL DIRTY



RTU-1 EVAP COIL CLEAN



RTU-2 EVAP COIL DIRTY



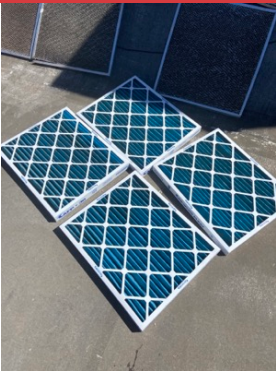
RTU-2 EVAP COIL CLEAN



RTU-3 EVAP COIL DIRTY



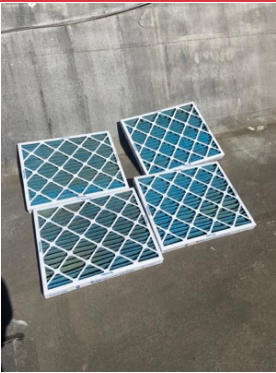
RTU-3 EVAP COIL CLEAN



RTU-1 EVAP FILTER DIRTY



RTU-1 EVAP FILTER CLEAN



RTU-2 EVAP FILTER DIRTY



RTU-1 EVAP FILTER CLEAN



RTU-3 EVAP FILTER DIRTY



RTU-3 EVAP FILTER CLEAN



RTU-1 CONDENSATION TRAY CLEAN



RTU-2 CONDENSATION TRAY CLEAN



RTU-3 CONDENSATION TRAY CLEAN



RTU-1 CONDENSATION DRAIN CLEAN



RTU-2 CONDENSATION DRAIN CLEAN



RTU-3 CONDENSATION DRAIN CLEAN



ACTUAL WALK IN COOLER CLEAN



IACTUAL WALK IN FREEZER COIL CLEAN

BUILDING PRESSURE SET POINTS

Assigned Organization: National TAB

Status: Not Submitted

Asset:

INITIAL AIRFLOWS:	
OA RTU-1 (DINING)	620
OA RTU-2 (DINING)	600
OA RTU-3 (KITCHEN)	415
KEF-1 (GRIDDLE)	2150
KEF-2 (FRYER)	918
EF-1 (RESTROOM)	140
EF-2 (RESTROOM)	143
MAU-1	2318
TOTAL EXHUAST	3351
TOTAL SUPPLY	3953
NET AIRFLOW	+602
BUILDING PRESSURE (in W.C.)	
INITIAL BUILDING PRESSURE	-0.010
FINAL BUILDING PRESSURE	0.010

Notes/Comments:

**PM CHECKLIST
CONDENSATE DRAINS**

Assigned Organization: National TAB

Status: Not Submitted

Asset:

Condensate Traps (RTU 1/RTU 2/RTU 3)	
Record height of trap on A side	11"/10/5/11
Record height of trap on B side	7"/7"/7"
Calculate the Height of the trap (H) [A-B=H]	4"/4"/4"
Calculate the minimum required height of the trap (1.5" plus Fan Fan. Suc. S.P.)	2.77"/2.71"/3.27"
Is the trap properly size?	YES/YES/YES
Is the evaporator drip pan cleared of debris? (Include Picture)	YES
Is trap properly put together and not damaged? (Include Picture)	YES
Trap flushed with water and debris removed from the trap?	YES

Notes/Comments:

(1) WHILE THE SIZING IS CORRECT RTU-2 HAS A SNAPPED CONDENSATE DRAIN. A NEW ONE NEEDS TO BE INSTALLED. CONTACT YOUR SERVICE PROVIDER TO REPAIR OR REPLACE THIS PART, OR CONTACT GREG FOR ASSESTMENT AND HAVE NTAB TECH REPLACE AT NEXT SCHEDULED RENEW VISIT.

PM CHECKLIST COOLING SEASON

Assigned Organization: National TAB

Status: Not Submitted

Asset:

COOLING SEASON CHECKLIST	
Does the thermostat turn on all stages of cooling properly?	YES
Confirm that the compressors high pressure not tripped (If applicable)?	YES
If the condenser has double layer condenser, was the inner layer cleaned?	YES
Are all condenser fans running?	YES
Is their a proper drop across RTUs evaporator coil?	YES

Notes/Comments:

PM CHECKLIST HVAC

Assigned Organization: National TAB

Status: Not Submitted

Asset:

HOOD CHECKLIST	
Smoke test capture - Perimeter of hood	100%/65%,YES
Smoke test capture - Top of cooking surface	100%/65%, YES
Hoods turn on by switch or HMI?	HMI
Are the hoods "FAN ON BY BUTTON" upon arrival?	BUTTON
RTU PM CHECKLIST	
Outside air fliter clean?	YES
Evaporator Filters Replaced?	YES
Evaporator Coil cleaned?	YES
Condenser cleaned? (Seasonal)	YES
Belt replaced in last 6 months?	YES
Motor ventilation cleared of dust and debris?	YES
Is there a return filter on the Dining Room RTU return duct? If so what type?	YES
Is the return filter clean on the Dinning Rooms RTU Dinning duct?	YES
MAU PM CHECKLIST	
Outside air fliter clean?	YES(1)
Belt replaced in last 6 months?	YES
EXHUAST FAN PM CHECKLIST	
Motor ventilation cleared of dust and debris?	YES
Belt replaced in last 6 months?	YES
Motor ventilation cleared of dust and debris?	YES
Are the screws installed to secure the exhaust fan to the curb?	Yes
THERMOSTAT CHECKLIST	
Are the thermostats in fan "ON" position upon arrival?	YES
Are the thermostats prograded?	YES
ADDITIONAL	
Manager on Duty at time of completion.	CINTHIA(NEW DM)

Is the roof free of debris? if not what was left on the roof?	YES
---	-----

Notes/Comments:

(1) NEED TO BE REPLACED.

Project Summary

The purpose of the visit is to perform preventative maintenance for the store. We change belts and filters, clean evaporators and condenser, and check refrigeration and heating cycle where possible. We also, check and set exhaust, outside air, and make up air coming in out of the build to the engineer's design and/or to make the space as comfortable and healthy as possible. All of this ensures a healthy and comfortable space, extends service life of units, and reduces the number of future repairs by prevention.

Freddy's locations for preventative maintenance are done in a pair. This allows two stores preventative maintenance to be completed in one day. To accomplish this the food equipment will be cleaned every 6 months. So, every other visit to a store the food equipment will be evaluated and cleaned. Food equipment was evaluated this trip.

RTUs: There evaporator coil was rinsed off and cleaned. During warmer months a self-cleaning chemical is sprayed on the evaporator. The outside air filters were rinsed off to remove any dirty, so the unit stays at the designated outside air set point. Based on static pressures, amps, and fan rpm it shows that the total supply has not changed since the last test and balance.

MAU: The intake filters had slight dirt accumulation. They were washed.

All exhaust fans were cleaned out on the roof. The vents to the motor were cleaned so they can vent properly.

Food equipment condensers were cleaned. The Walk-In evaporator were cleaned. All equipment is in good health unless stated in the Recommendation List.

All issues found are reported in the Recommendation list at the start of the report.

System/Unit: AHU/RTU

Asset: RTU-1

AREA: SALES/SERVICE

Unit Data		
	Design	Actual
MFG	YORK	YORK
Model Num	ZJ090N15Q2KA A5	ZW- 07N18NTKAA5A
Serial Num	-	N1F4761629
Num OA Filters 1	-	4
OA Filter Size 1	-	23X24.25
Num Final Filter 1	-	4
Final Filter Size 1	-	23X24X2
Num Final Filter 2	-	
Final Filter Size 2	-	

Motor Data		
	Design	Actual
Motor MFG	-	CENTURY
Frame	-	56HZ
Horsepower	-	3
Motor Rpm	-	1479
Phase	-	3
Rated Voltage	-	208
Rated Amperage	-	9.4

Drive Data		
	Design	Actual
Belt CL Distance	-	
Num of Belts	-	1
Belt Size	-	A54
Belt Alignment	-	GOOD

Test Data		
	Design	Actual
SF RPM	813	835
OA CFM	673	620
RL Voltage	-	210/211/212
RL Amperage	-	7.0/7.2/7.5

Performance Data		
	Design	Actual
MA Plenum SP	-	-0.44"
Fan Suction SP	-	-0.67"
Fan Discharge SP	-	0.57"
Total ESP	1.12"	1.01"
Fan Total SP	1.50"	1.27"
MA Temp (db/wb)	65/62	81/74
SA Temp (db/wb)	102/99	56/45

Compressors		
	Design	Actual
Refrigerant Charge	-	R410A
Refrigerant Type	-	REFRIGERANT
Comp 1 RLA	-	8.1/8.2/8.5
Comp 2 RLA	-	10.1/10.2/10.3
Circuit 1 Superheat	-	25
Circuit 2 Superheat	-	25

General		
	Design	Actual
Unit free of Damage	-	YES
Unit Completely Assembled	-	YES
Unit Leveled	-	YES
Curb & Unit Installed Air Tight	-	YES
Controls Complete	-	YES
Unit Filters Clean	-	YES
Evap Coil Clean	-	YES
Evap Coil Free of Frost	-	YES
Condensor Coil Clean	-	YES
Condensor Fins Straight	-	YES
Refr Sight Glass Dry	-	NA
Condensate Drain Installed	-	YES
Crankcase Heaters Operate	-	NA

Completed By: Ash Albin on 04/06/2022

Notes:

System/Unit: AHU/RTU

Asset: RTU-2

AREA: SALES/SERVICE

Unit Data		
	Design	Actual
MFG	YORK	YORK
Model Num	ZJ090N15Q2KA A5	ZJ090N15Q2KA A5
Serial Num	-	N1F4761630
Num OA Filters 1	-	4
OA Filter Size 1	-	23X22X25
Num Final Filter 1	-	4
Final Filter Size 1	-	20X24X2
Num Final Filter 2	-	
Final Filter Size 2	-	

Motor Data		
	Design	Actual
Motor MFG	-	CENTURY
Frame	-	56HZ
Horsepower	-	3
Motor Rpm	-	1793
Phase	-	3
Rated Voltage	-	208
Rated Amperage	-	9.4

Drive Data		
	Design	Actual
Belt CL Distance	-	
Num of Belts	-	1
Belt Size	-	AX54
Belt Alignment	-	GOOD

Test Data		
	Design	Actual
SF RPM	841	832
OA CFM	660	600
RL Voltage	-	213/212/210
RL Amperage	-	7/6/7.3/7.5

Performance Data		
	Design	Actual
MA Plenum SP	-	-0.49"
Fan Suction SP	-	-0.70"
Fan Discharge SP	-	0.51"
Total ESP	1.12"	1.0"
Fan Total SP	1.29"	1.21"
MA Temp (db/wb)	70/61	80/65
SA Temp (db/wb)	104/87	54/45

Compressors		
	Design	Actual
Refrigerant Charge	-	R410A
Refrigerant Type	-	REFRIGERANT
Comp 1 RLA	-	10.5/11.3/10.6
Comp 2 RLA	-	10.9/10.9/10.9
Circuit 1 Superheat	-	26
Circuit 2 Superheat	-	26

General		
	Design	Actual
Unit free of Damage	-	YES
Unit Completely Assembled	-	YES
Unit Leveled	-	YES
Curb & Unit Installed Air Tight	-	YES
Controls Complete	-	YES
Unit Filters Clean	-	YES
Evap Coil Clean	-	YES
Evap Coil Free of Frost	-	YES
Condensor Coil Clean	-	YES
Condensor Fins Straight	-	YES
Refr Sight Glass Dry	-	NA
Condensate Drain Installed	-	YES
Crankcase Heaters Operate	-	NA

Completed By: Ash Albin on 04/06/2022

System/Unit: AHU/RTU

Notes:

System/Unit: AHU/RTU

Asset: RTU-3

AREA: KITCHEN

Unit Data		
	Design	Actual
MFG	YORK	YORK
Model Num	ZJ150N20Q2KA A5	ZJ150N20Q2KA A5
Serial Num	-	21F4761624
Num OA Filters 1	-	4
OA Filter Size 1	-	23X24.25
Num Final Filter 1	-	4
Final Filter Size 1	-	20X24X2
Num Final Filter 2	-	
Final Filter Size 2	-	

Motor Data		
	Design	Actual
Motor MFG	-	BALDOR
Frame	-	184T
Horsepower	-	5
Motor Rpm	-	1782
Phase	-	3
Rated Voltage	-	208
Rated Amperage	-	14

Drive Data		
	Design	Actual
Belt CL Distance	-	
Num of Belts	-	1
Belt Size	-	AX54
Belt Alignment	-	GOOD

Test Data		
	Design	Actual
SF RPM	1299	1310
OA CFM	425	415
RL Voltage	-	210/211/212
RL Amperage	-	9.5/9.5/9.5

Performance Data		
	Design	Actual
MA Plenum SP	-	-0.64"
Fan Suction SP	-	-1.20"
Fan Discharge SP	-	0.57 "
Total ESP	2.1"	1.21"
Fan Total SP	1.97"	1.77"
MA Temp (db/wb)	72/60	80/66
SA Temp (db/wb)	107/93	52/43

Compressors		
	Design	Actual
Refrigerant Charge	-	R410A
Refrigerant Type	-	REFRIGERANT
Comp 1 RLA	-	10.4/10.6/10.9
Comp 2 RLA	-	13.4/14.5/14.8
Circuit 1 Superheat	-	28
Circuit 2 Superheat	-	28

General		
	Design	Actual
Unit free of Damage	-	YES
Unit Completely Assembled	-	YES
Unit Leveled	-	YES
Curb & Unit Installed Air Tight	-	YES
Controls Complete	-	YES
Unit Filters Clean	-	YES
Evap Coil Clean	-	YES
Evap Coil Free of Frost	-	YES
Condensor Coil Clean	-	YES
Condensor Fins Straight	-	YES
Refr Sight Glass Dry	-	NA
Condensate Drain Installed	-	YES
Crankcase Heaters Operate	-	NA

Completed By: Ash Albin on 04/06/2022

System/Unit: AHU/RTU

Notes:

System/Unit: FAN - Supply

Asset: MAU-1

AREA: KITCHEN HOODS

Unit Data		
	Design	Actual
MFG	CAPTIVE-AIRE	CAPTIVE AIR
Model Num	A1.D.250-G10	A1.D.250-G10
Serial Num	-	1949084
Num Filters Size 1	-	3
Filter Size 1	-	16X20X2
Num Filters Size 2	-	
Filter Size 2	-	

Motor Data		
	Design	Actual
Motor MFG	-	WEG
Frame	-	D56
Horsepower	-	1.5
Motor Rpm	-	1744
Phase	-	3
Voltage (rated)	-	208
Amperage (rated)	-	4.7
Service Factor	-	1

Drive Data		
	Design	Actual
Num of Belts	-	1
Belt Size	-	AX38
Belt Alignment Verified	-	GOOD

Gas Heat		
	Design	Actual
Gas Type	-	NATURAL GAS
Burner Type	-	BURNER TUBES
Heater Operates (y/n)	-	YES
Flame Status (pass/fail)	-	PASS
Inlet Air Temp SetPt	-	55
Discharge Air Temp SetPt	-	60
Air Flow Switch SP Actual	-	0.37"

Completed By: Ash Albin on 04/06/2022

Notes:

Test Data		
	Design	Actual
CFM	2541	2318
SF RPM	1321	1330
Motor RPM	-	1759
RL Voltage	-	211/212/213
RL Amperage	-	3.4/3.4/3.5

General		
	Design	Actual
Unit free of Damage	-	YES
Curb & Unit Installed Air Tight	-	YES
Fan Rotation Correct	-	YES
Fan Belt Condition	-	YES
Unit Filters Clean	-	YES

System/Unit: FAN - Exhaust

Asset: EF1

AREA: RESTROOM

Unit Data		
	Design	Actual
MFG	COOK	COOL AIR
Model Num	GC-164	CFL15A1151
Serial Num	-	NA

Test Data		
	Design	Actual
CFM	150	140

Motor Data		
	Design	Actual
Motor MFG	-	BROAN
Horsepower	-	108W
Motor Rpm	-	745
Phase	-	1
Voltage (rated)	-	120
Amperage (rated)	-	0.56

Completed By: Ash Albin on 04/06/2022

Notes:

System/Unit: FAN - Exhaust

Asset: EF2

AREA: RESTROOM

Unit Data		
	Design	Actual
MFG	COOK	COOL AIR
Model Num	GC-164	CFL15A1151
Serial Num	-	NA

Test Data		
	Design	Actual
CFM	150	143

Motor Data		
	Design	Actual
Motor MFG	-	BROAN
Horsepower	-	108W
Motor Rpm	-	45
Phase	-	1
Voltage (rated)	-	120
Amperage (rated)	-	0.56

Completed By: Ash Albin on 04/06/2022

Notes:

System/Unit: FAN - Exhaust

Asset: KEF-1

AREA: HOOD 2

Unit Data		
	Design	Actual
MFG	CAPTIVE-AIRE	CAPTIVE-AIRE
Model Num	NCA8FA	NCA8FA
Serial Num	-	1949084
Type	-	CENTRIFUGAL
Configuration	-	UPBLAST

Motor Data		
	Design	Actual
Motor MFG	-	WEG
Frame	-	C56
Horsepower	-	0.50
Motor Rpm	-	1730
Phase	-	1
Voltage (rated)	-	115/208-230/229
Amperage (rated)	-	7.7
Service Factor	-	

Drive Data		
	Design	Actual
Num of Belts	-	1
Belt Size	-	AX20
Belt Alignment Verified	-	GOOD

Completed By: Ash Albin on 04/06/2022

Notes:

Test Data		
	Design	Actual
CFM	772	918
Fan RPM	1718	1689
Fan Rotation	-	CCW
Motor RPM	-	1749
RL Voltage	-	210/211/212
RL Amperage	-	5.5
Suction ESP	-	-0.58"
Discharge ESP	-	ATM
Total ESP	-0.67"	-0.58"

System/Unit: FAN - Exhaust

Asset: KEF-2

AREA: HOOD 1

Unit Data		
	Design	Actual
MFG	CAPTIVE-AIRE	CAPTIVE-AIRE
Model Num	NCA14FA	NCA14FA
Serial Num	-	1949084
Type	-	CENTRIFUGAL
Configuration	-	UPBLAST

Motor Data		
	Design	Actual
Motor MFG	-	WEG
Frame	-	E56
Horsepower	-	0.75
Motor Rpm	-	1745
Phase	-	3
Voltage (rated)	-	208-230/460
Amperage (rated)	-	2.65-2.66/1.3
Service Factor	-	1.15

Drive Data		
	Design	Actual
Num of Belts	-	1
Belt Size	-	AX22
Belt Alignment Verified	-	GOOD

Completed By: Ash Albin on 04/06/2022

Notes: FAN LAW ADJUSTED TOTAL. 1303 WAS MEASURED ON ROOF INTITAL READING/// FINAL WAS 1325

Test Data		
	Design	Actual
CFM	2202	2150
Fan RPM	1303	1325
Fan Rotation	-	CCW
Motor RPM	-	1761
RL Voltage	-	211/212/213
RL Amperage	-	2.3/2.3/2.3
Suction ESP	-	-0.87
Discharge ESP	-	ATM
Total ESP	0.75"	0.87"

System/Unit: COIL - DX

Asset: DXC1

AREA: WALK-IN COOLER

Unit Data		
	Design	Actual
MFG	NA	KOLPAK
Model Num	NA	CLR
Serial Num	-	410083981DWS

General		
	Design	Actual
Evap Coil Clean	-	YES
Evap Coil Fins Straight	-	YESYES
Evap Coil Free of Frost	-	NO
Condensor Coil Clean	-	YES
Condensor Fins Straight	-	YES
Condensate Drain Installed	-	YES
Crankcase Heaters Operate	-	NA

Completed By: Ash Albin on 04/06/2022

Notes: FANS NOT RUNNING. EVAP COIL HAS ICE BUILD UP ON COILS. i CLEANED THEM OFF AND IN 15 MINUTES THEY HAD BEEN COVERED AGAIN IN FROST AND ICE.

System/Unit: COIL - DX

Asset: DXC2

AREA: WALK-IN FREEZER

Unit Data		
	Design	Actual
MFG	NA	KOLPAK
Model Num	NA	FZR
Serial Num	-	410083981DW1 S

General		
	Design	Actual
Evap Coil Clean	-	YES
Evap Coil Fins Straight	-	YES
Evap Coil Free of Frost	-	YES
Condensor Coil Clean	-	YES
Condensor Fins Straight	-	YES
Condensate Drain Installed	-	YES
Crankcase Heaters Operate	-	NA

Completed By: Ash Albin on 04/06/2022

Notes: ICE BUILD UP ON PEN PIPE SEE ISSUES AND SITE PICTURES

System/Unit: COIL - DX

Asset: DXC3

AREA: MEAT COOLER 1

Unit Data		
	Design	Actual
MFG	NA	RANDAL
Model Num	NA	NA
Serial Num	-	NA

General		
	Design	Actual
Evap Coil Clean	-	YES
Evap Coil Fins Straight	-	YES
Evap Coil Free of Frost	-	YES
Condensor Coil Clean	-	YES
Condensor Fins Straight	-	YES
Condensate Drain Installed	-	YES
Crankcase Heaters Operate	-	NA

Completed By: Ash Albin on 04/06/2022

Notes:

System/Unit: COIL - DX

Asset: DXC4

AREA: PREP TABLE 1

Unit Data		
	Design	Actual
MFG	NA	RANDALL
Model Num	NA	NA
Serial Num	-	NA

General		
	Design	Actual
Evap Coil Clean	-	YES
Evap Coil Fins Straight	-	YES
Evap Coil Free of Frost	-	YESYES
Condensor Coil Clean	-	YES
Condensor Fins Straight	-	YES
Condensate Drain Installed	-	YES
Crankcase Heaters Operate	-	NA

Completed By: Ash Albin on 04/06/2022

Notes:

System/Unit: COIL - DX

Asset: DXC5

AREA: FRYER FREEZER

Unit Data		
	Design	Actual
MFG	NA	RANDALL
Model Num	NA	2010F
Serial Num	-	W276490-1-1

General		
	Design	Actual
Evap Coil Clean	-	YES
Evap Coil Fins Straight	-	YES
Evap Coil Free of Frost	-	YES
Condensor Coil Clean	-	YES
Condensor Fins Straight	-	YES
Condensate Drain Installed	-	YES
Crankcase Heaters Operate	-	NA

Completed By: Ash Albin on 04/06/2022

Notes:

System/Unit: COIL - DX

Asset: DXC6

AREA: SUNDAE PREP

Unit Data		
	Design	Actual
MFG	NA	STOELTING
Model Num	NA	DC4-37
Serial Num	-	5430806L

General		
	Design	Actual
Evap Coil Clean	-	YES
Evap Coil Fins Straight	-	YES
Evap Coil Free of Frost	-	YES
Condensor Coil Clean	-	YES
Condensor Fins Straight	-	YES
Condensate Drain Installed	-	YES
Crankcase Heaters Operate	-	NA

Completed By: Ash Albin on 04/06/2022

Notes:

System/Unit: COIL - DX

Asset: DXC7

AREA: TOPPING COOLER

Unit Data		
	Design	Actual
MFG	NA	RANDALL
Model Num	NA	2010F
Serial Num	-	W276490-1-1

General		
	Design	Actual
Evap Coil Clean	-	YES
Evap Coil Fins Straight	-	YES
Evap Coil Free of Frost	-	YES
Condensor Coil Clean	-	YESYES
Condensor Fins Straight	-	YES
Condensate Drain Installed	-	YES
Crankcase Heaters Operate	-	NA

Completed By: Ash Albin on 04/06/2022

Notes:

System/Unit: COIL - DX

Asset: DXC8

AREA: BOH ICE MACHINE

Unit Data		
	Design	Actual
MFG	NA	HOSHIZAKI AMERICA
Model Num	NA	F-1001MRJ-C
Serial Num	-	

General		
	Design	Actual
Evap Coil Clean	-	YES
Evap Coil Fins Straight	-	YES
Evap Coil Free of Frost	-	YES
Condensor Coil Clean	-	YES
Condensor Fins Straight	-	YES
Condensate Drain Installed	-	YES
Crankcase Heaters Operate	-	NA

Completed By: Ash Albin on 04/06/2022

Notes:

System/Unit: COIL - DX

Asset: DXC9

AREA: SODA ICE MACHINE

Unit Data		
	Design	Actual
MFG	NA	HOSHIZAKI AMERICA
Model Num	NA	F-1501MRJ-C
Serial Num	-	

General		
	Design	Actual
Evap Coil Clean	-	YES
Evap Coil Fins Straight	-	YES
Evap Coil Free of Frost	-	YES
Condensor Coil Clean	-	YES
Condensor Fins Straight	-	YES
Condensate Drain Installed	-	YES
Crankcase Heaters Operate	-	NA

Completed By: Ash Albin on 04/06/2022

Notes: