

sweetgreen

3101 W. EXPOSITION BLVD.
LOS ANGELES, CALIFORNIA 90018

THESE DRAWINGS & SPECIFICATIONS ARE CONFIDENTIAL AND SHALL REMAIN THE SOLE PROPERTY OF SWEETGREEN CORPORATION. THEY SHALL NOT BE REPRODUCED OR USED IN ANY MANNER ON OTHER PROJECTS OR EXTENSIONS TO THIS PROJECT WITHOUT THE PRIOR WRITTEN CONSENT OF SWEETGREEN CORPORATION. THESE DRAWINGS & SPECIFICATIONS ARE INTENDED TO EXPRESS DESIGN INTENT FOR A PROTOTYPICAL SWEETGREEN STORE (WHICH IS SUBJECT TO CHANGE AT ANY TIME) AND MAY NOT REFLECT ACTUAL SITE CONDITIONS. NEITHER PARTY SHALL HAVE ANY OBLIGATION NOR LIABILITY TO THE OTHER (EXCEPT AS STATED ABOVE) UNTIL A WRITTEN AGREEMENT IS FULLY EXECUTED.

ARCHITECT OF RECORD:

HARLAN R. FAUST
ARCHITECT

HARLAN R. FAUST, ARCHITECT
14344 "Y" STREET, SUITE 204
OMAHA, NE 68137-2805
402.895.0878
402.895.9561 FAX
www.hraarchitects.com

STAMP:
CONSTRUCTION
ISSUE SET
5/23/22

PROFESSIONAL ENGINEER
KIMBERLY
2/16/22

PROJECT INFORMATION:
FORT WORTH (WEST BEND)
PROJECT INFORMATION:
1605 S. UNIVERSITY DRIVE
FORT WORTH, TX 76107

DRAWN BY: XX
CHECKED BY: XX
PROJECT MANAGER: XX
SG DESIGN MANAGER: XX
SG CONSTR. MANAGER: XX
PROJECT NO: XXXXXX
TEMPLATE VERSION: 210604.03

REVISIONS
REV. DATE DESCRIPTION

RECEIVED BY D4 CONSTRUCTION
DATE: 05/23/2022

HOOD AND FAN
DETAILS

James F. Turner
Engineers, L.P.
Consulting Engineers
8340 Meadow Rd, Suite 160
Dallas, Texas 75221
TEL: 214-750-2900
JOB # 1119
TX REGISTRATION # 03342
DRAWN/DESIGN CAD/BJK OC/APPKWC/KKC
M301

HOOD INFORMATION -- JOB#5223039

HOOD NO	TAG	MODEL	MANUFACTURER	LENGTH	MAX COOKING TEMP	TYPE	APPLIANCE DUTY	DESIGN CFM/FT	TOTAL EXH CFM	EXHAUST PLENUM RISER(S)						HOOD CONSTRUCTION	HOOD CONFIG		
										WIDTH	LENG	HEIGHT	DIA	CFM	VEL		SP	END TO END	ROW
1		6012 VHB	CAPTIVEAIRE	4' 10"	700 DEG	II	N/A	197	950			4"	8"	475	1361	-0.086'	430 SS	ALONE	ALONE
												4"	8"	475	1361	-0.086'	100%		

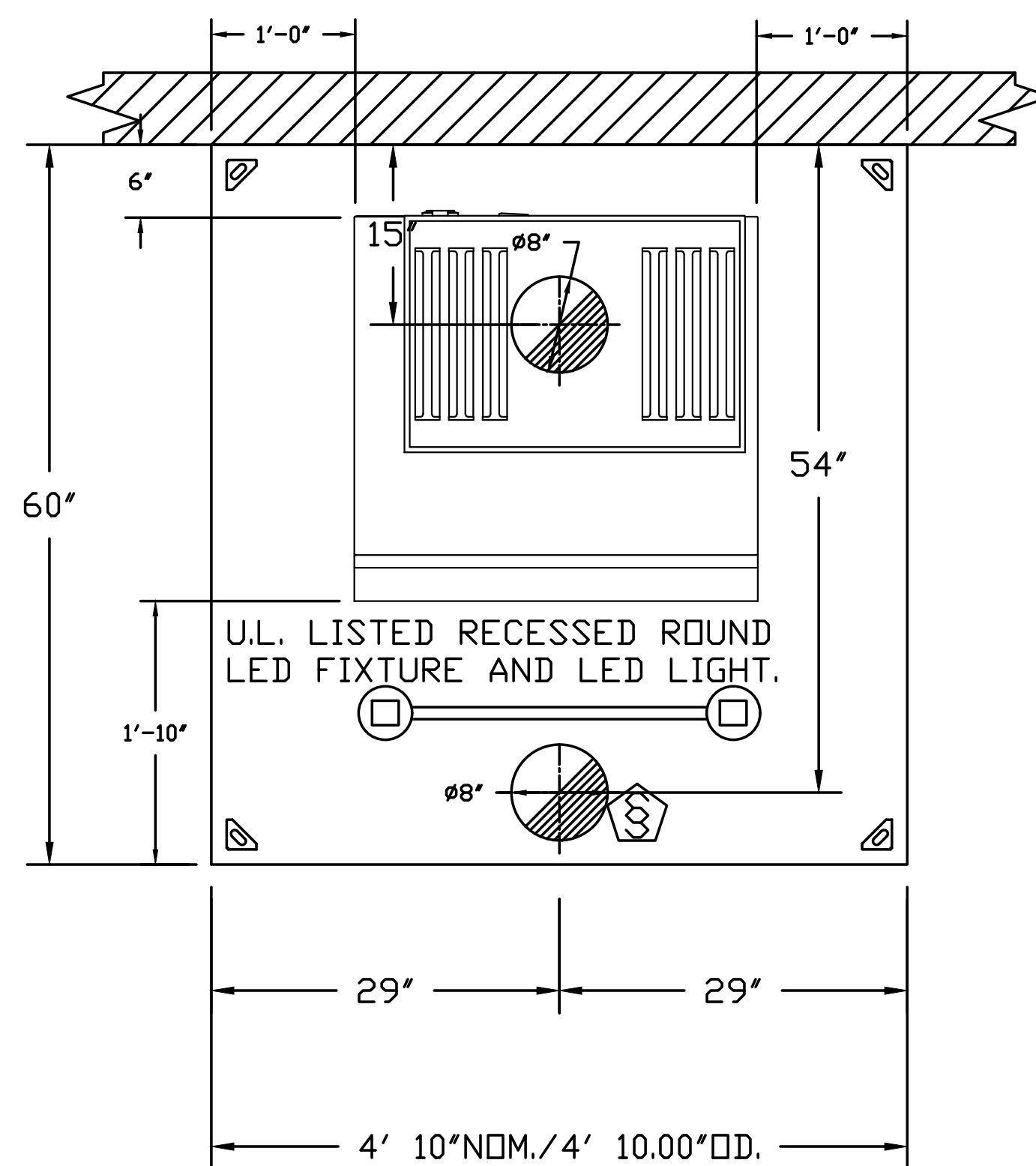
HOOD INFORMATION

HOOD NO	TAG	FILTER(S)				LIGHT(S)			UTILITY CABINET(S)				FIRE SYSTEM PIPING	HOOD HANGING WEIGHT		
		TYPE	QTY	HEIGHT	LENGTH	EFFICIENCY @ 7 MICRONS	QTY	TYPE	WIRE GUARD	LOCATION	SIZE	FIRE SYSTEM			ELECTRICAL	SWITCHES
1							2	RECESSED ROUND	NO						NO	192 LBS

HOOD OPTIONS

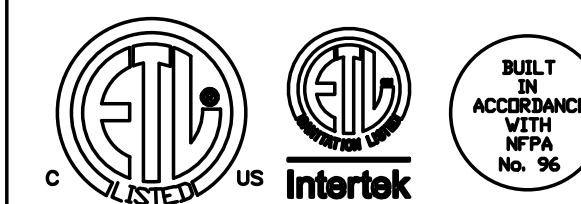
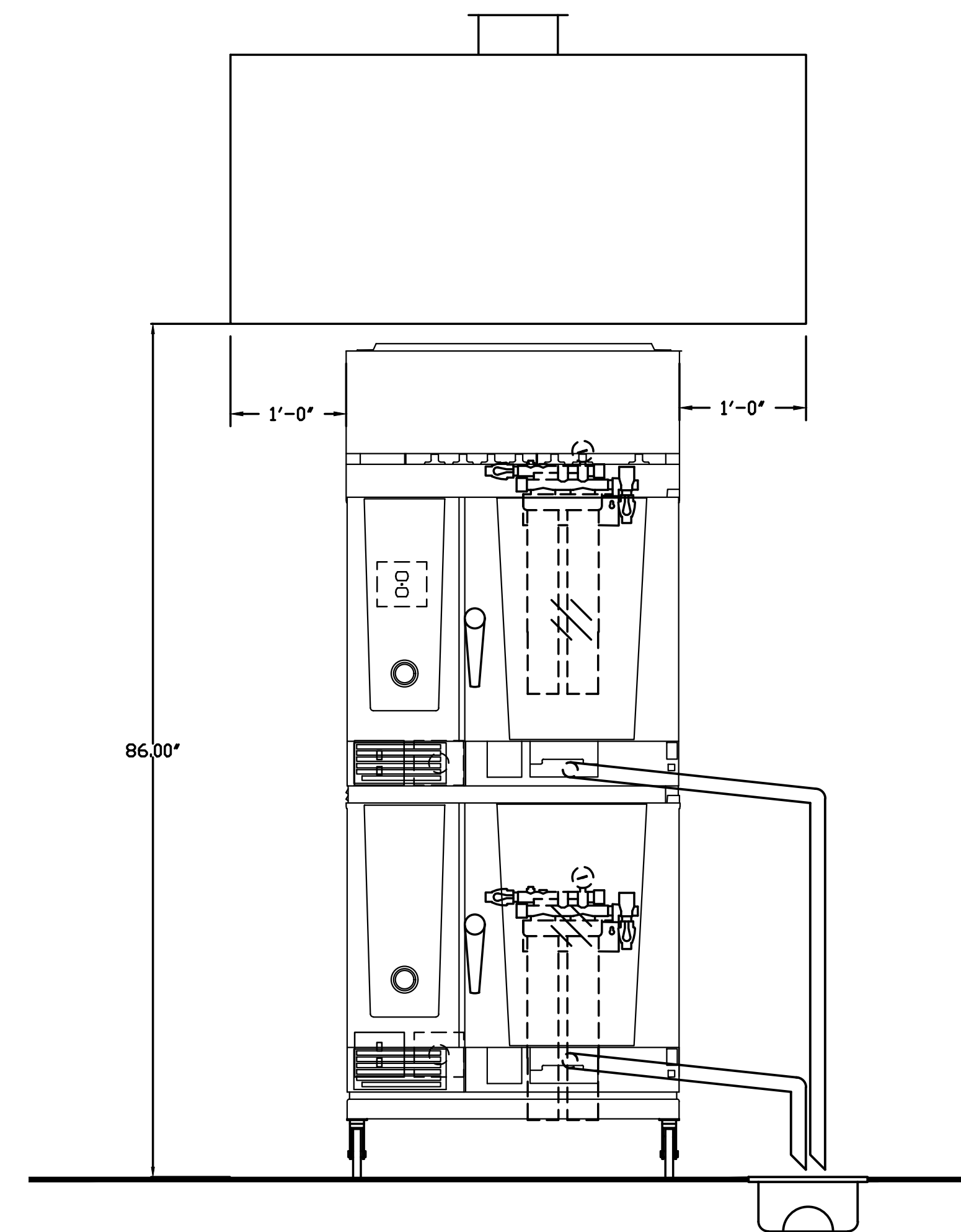
HOOD NO	TAG	OPTION
1		FIELD WRAPPER 18.00" HIGH FRONT, LEFT, RIGHT.

TOP VIEW

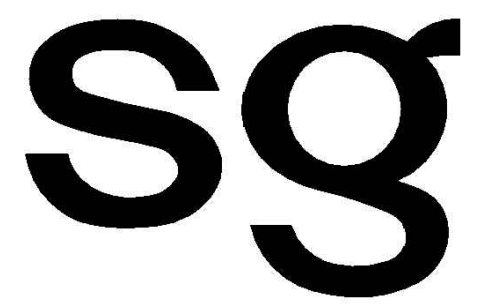


PLAN VIEW -- HOOD #1
4' 10.00" LONG 6012VHB

FRONT VIEW



JOB Sweetgreen - Forth Worth, TX	
LOCATION ARLINGTON, TX, 76006	
DATE 1/31/2022	JOB # 5301705
DWG # 1	DRAWN BY BT-32
REV.	SCALE 3/8" = 1'-0"



sweetgreen

3101 W. EXPOSITION BLVD.
LOS ANGELES, CALIFORNIA 90018

THESE DRAWINGS & SPECIFICATIONS ARE CONFIDENTIAL AND SHALL REMAIN THE SOLE PROPERTY OF SWEETGREEN CORPORATION. THEY SHALL NOT BE REPRODUCED IN WHOLE OR IN PART, SHARED WITH THIRD PARTIES OR USED IN ANY MANNER ON OTHER PROJECTS OR EXTENSIONS TO THIS PROJECT WITHOUT THE PRIOR WRITTEN CONSENT OF SWEETGREEN CORPORATION. THESE DRAWINGS & SPECIFICATIONS ARE INTENDED TO EXPRESS DESIGN INTENT FOR A PROTOTYPICAL SWEETGREEN STORE (WHICH IS SUBJECT TO CHANGE AT ANY TIME) AND MAY NOT REFLECT ACTUAL SITE CONDITIONS. NEITHER PARTY SHALL HAVE ANY OBLIGATION NOR LIABILITY TO THE OTHER (EXCEPT AS STATED ABOVE) UNTIL A WRITTEN AGREEMENT IS FULLY EXECUTED.

ARCHITECT OF RECORD:
HARLAN R. FAUST
ARCHITECT

HARLAN R. FAUST, ARCHITECT
14344 "Y" STREET, SUITE 204
OMAHA, NE 68137-2805
402.895.0878
402.895.9561 FAX
www.hraarchitects.com

STAMP:
CONSTRUCTION
ISSUE SET
5/23/22
Kimlin

PROJECT INFORMATION:
FORT WORTH (WEST BEND)
PROJECT INFORMATION:
1605 S. UNIVERSITY DRIVE
FORT WORTH, TX 76107

DRAWN BY: XX
CHECKED BY: XX
PROJECT MANAGER: XX
SG DESIGN MANAGER: XX
SG CONSTR. MANAGER: XX
PROJECT NO: XXXXXX
TEMPLATE VERSION: 210604.03

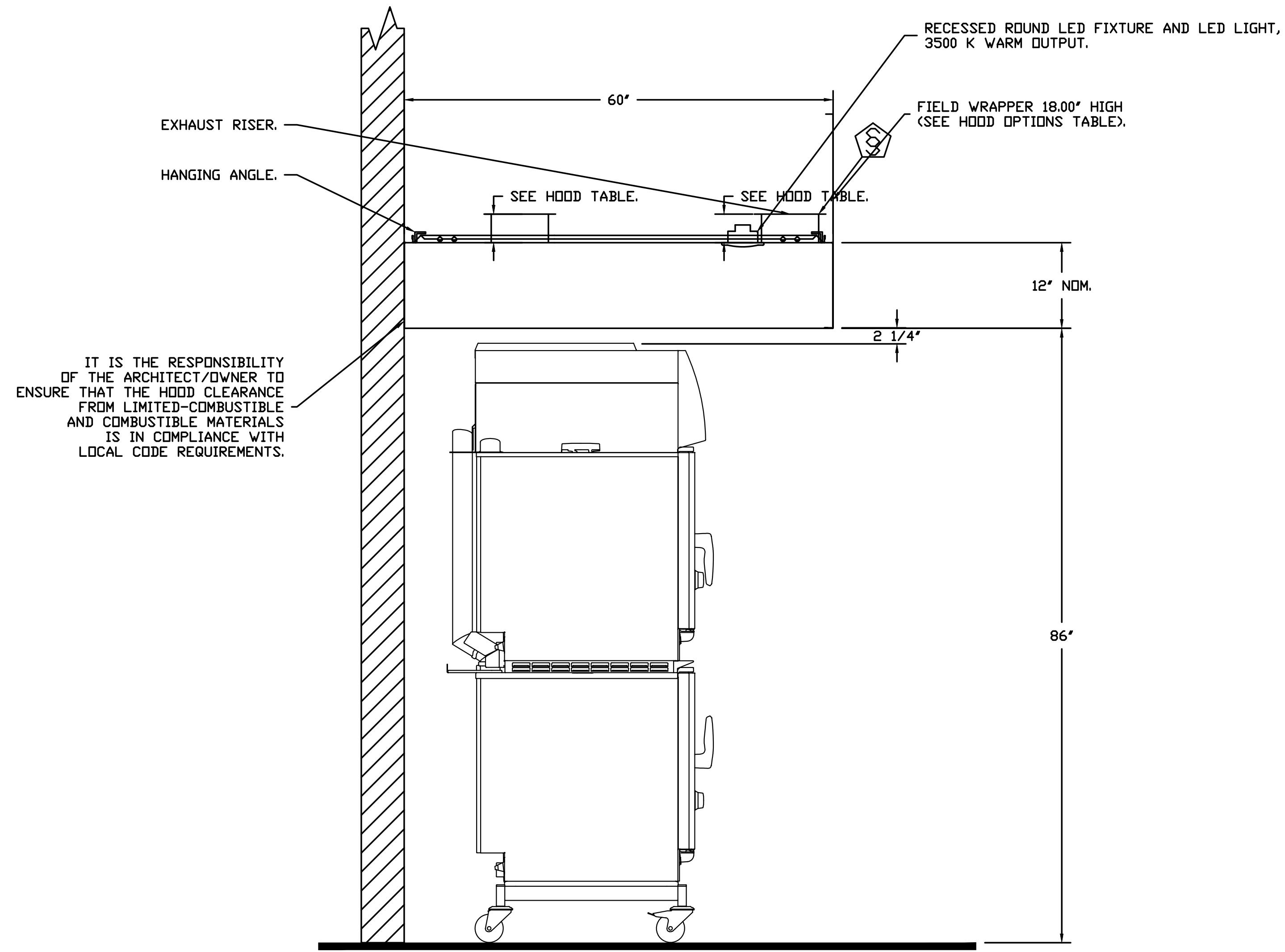
REVISIONS
REV. DATE DESCRIPTION

RECEIVED BY D4 CONSTRUCTION
DATE: 05/23/2022

HOOD AND FAN
DETAILS

M302

SIDE VIEW



IT IS THE RESPONSIBILITY OF THE ARCHITECT/OWNER TO ENSURE THAT THE HOOD CLEARANCE FROM LIMITED-COMBUSTIBLE AND COMBUSTIBLE MATERIALS IS IN COMPLIANCE WITH LOCAL CODE REQUIREMENTS.

SECTION VIEW - MODEL 6012VHB
HOOD - #1



JOB Sweetgreen - Fort Worth, TX	
LOCATION ARLINGTON, TX, 76006	
DATE 1/31/2022	JOB # 5301705
DWG # 2	DRAWN BY BT-32
REV.	SCALE 3/8" = 1'-0"

JFTE James F. Turner
Engineers, L.P.
Consulting Engineers
8340 Meadow Rd, Suite 160
Dallas, Texas 75221
TEL 214-750-2900
JOB # 1119
TX REGISTRATION # 33342

DRAWN/DESIGN CAD/BJK | QC/APP/WKC/WKC

EXHAUST FAN INFORMATION – JOB#5301705

FAN UNIT NO	TAG	QTY	FAN UNIT MODEL #	MANUFACTURER	CFM	ESP	RPM	MOTOR ENCL	HP	BHP	PHASE	VOLT	FLA	DISCHARGE VELOCITY	WEIGHT (LBS)	SDNES
1	UPBLAST	1	DU50HFA	CAPTIVEAIRE	950	0.700	1310	TEAD-ECM	0.500	0.2320	1	115	6.3	361 FPM	77	12.3

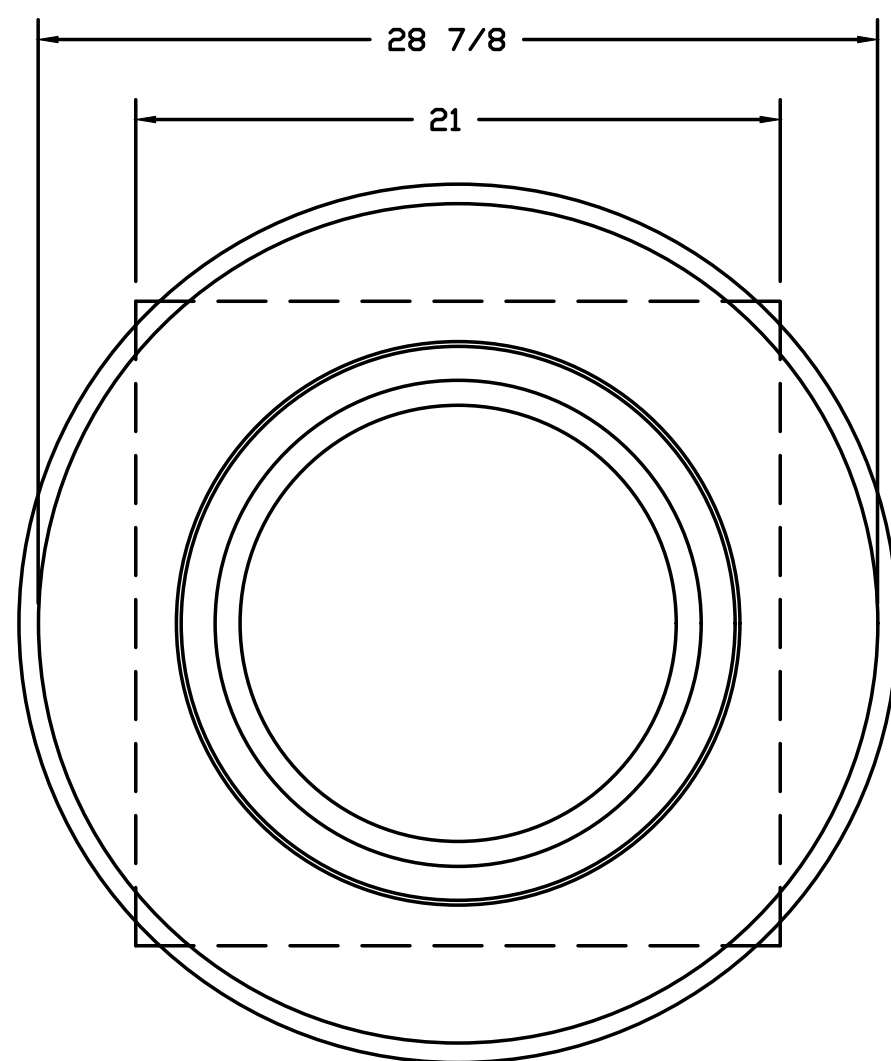
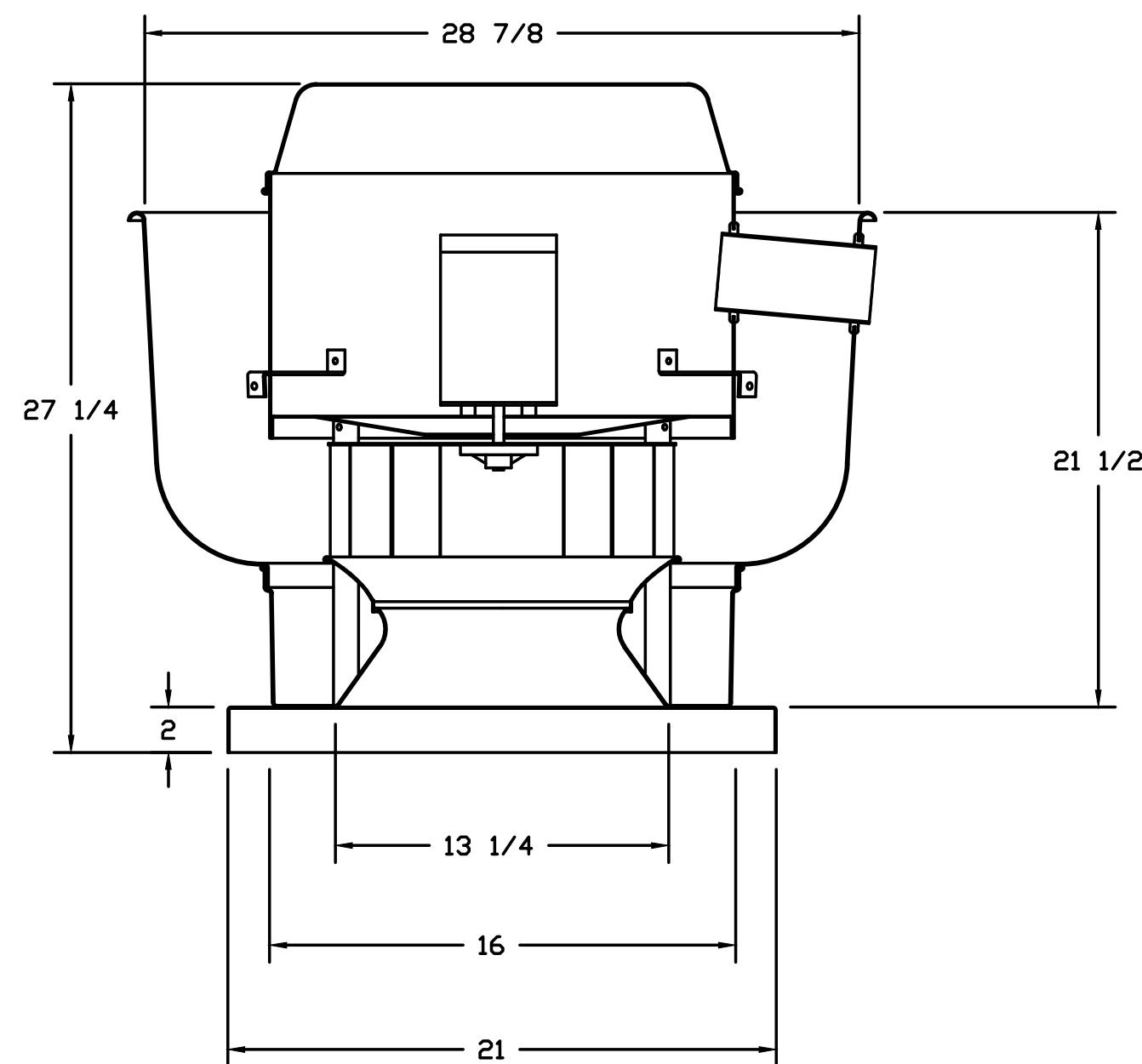
FAN OPTIONS

FAN UNIT NO	TAG	QTY	DESCRIPTION
1	UPBLAST	1	I 15-BDD DAMPER
		1	ECM WIRING PACKAGE – EXHAUST – MANUAL OR 0-10VDC REFERENCE SPEED CONTROL –MSC- (TELCD), CCW ROTATION.
		1	2 YEAR PARTS WARRANTY.

CURB ASSEMBLIES

NO	DN FAN	WEIGHT	ITEM	SIZE
1	# 1	27 LBS	CURB	19.500"W X 19.500"L X 20.000"H ALONG LENGTH, RIGHT VENTED.

FAN #1 DU50HFA – EXHAUST FAN (UPBLAST)



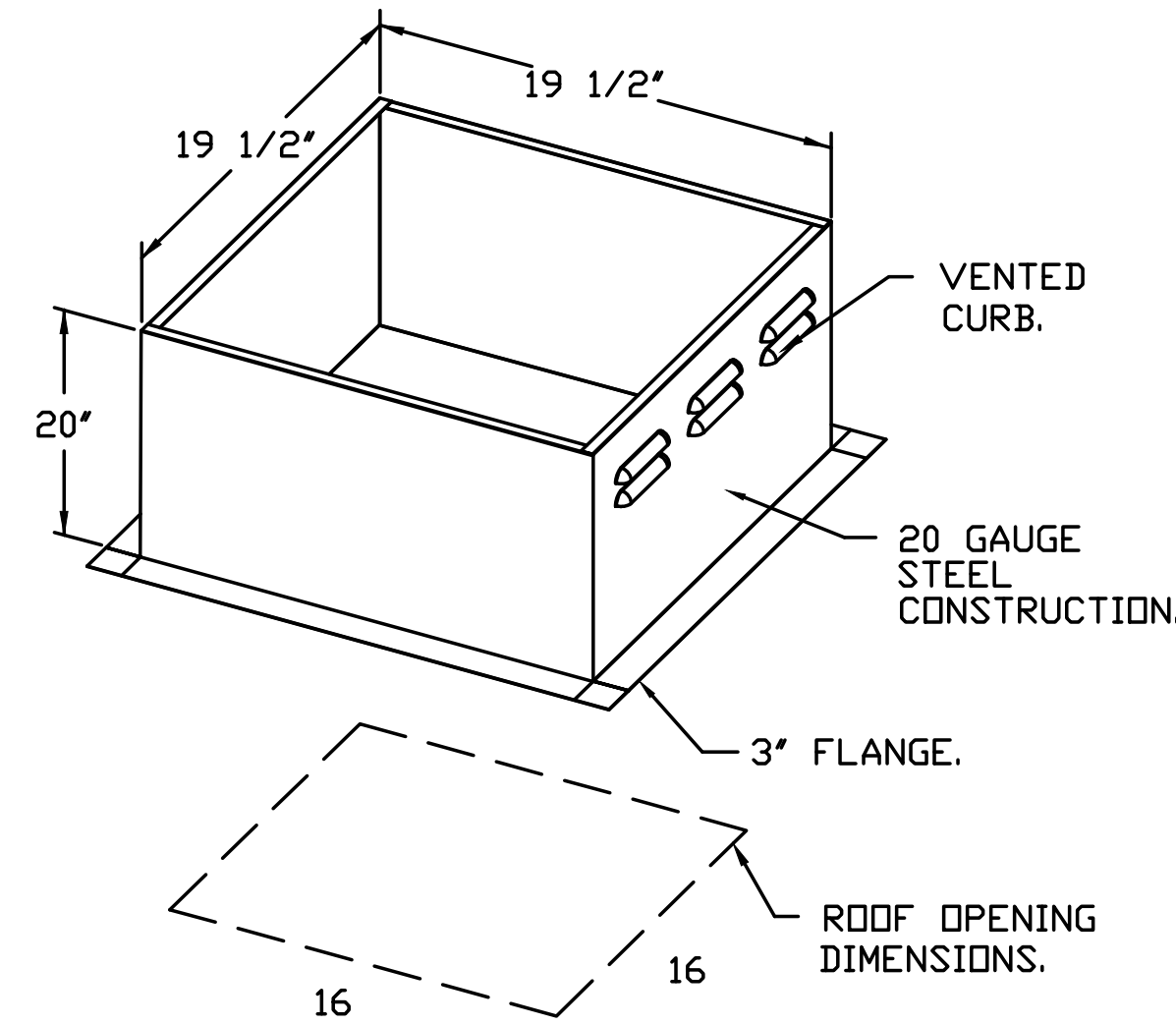
TOP VIEW

FEATURES:

- DIRECT DRIVE CONSTRUCTION (NO BELTS/PULLEYS).
- ROOF MOUNTED FANS.
- UL705.
- VARIABLE SPEED CONTROL.
- INTERNAL WIRING.
- THERMAL OVERLOAD PROTECTION (SINGLE PHASE).
- NEMA 3R SAFETY DISCONNECT SWITCH.

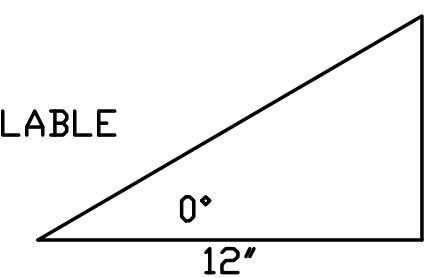
OPTIONS

- ECM WIRING PACKAGE – MANUAL OR 0-10VDC REFERENCE SPEED CONTROL (TELCD MOTOR), CCW ROTATION.
- I 15-BDD DAMPER.
- 2 YEAR PARTS WARRANTY.

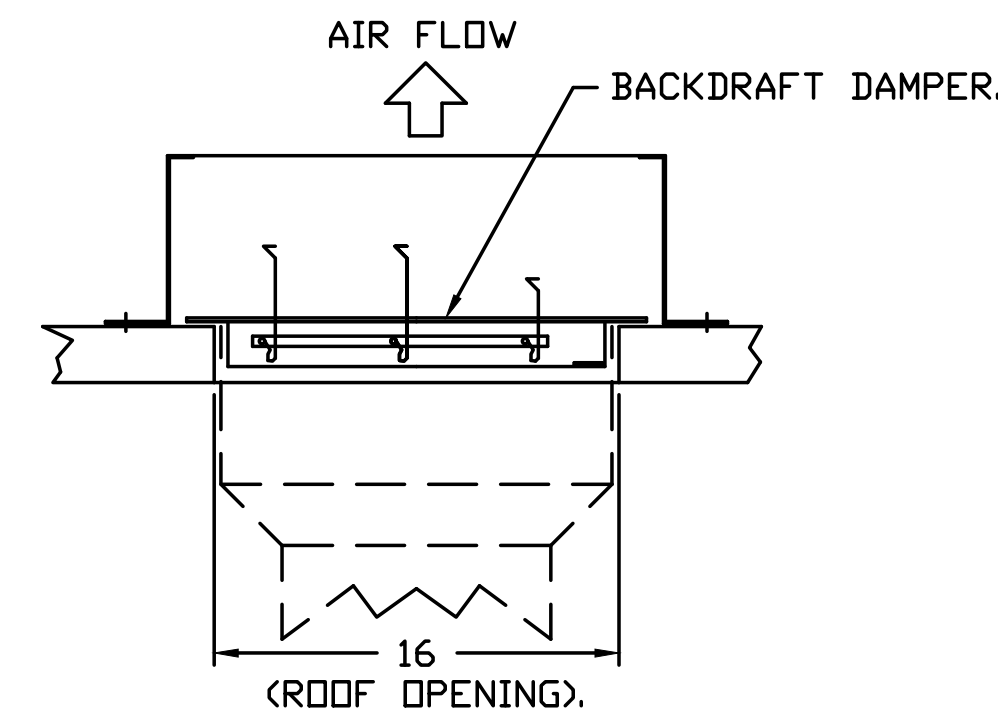


PITCHED CURBS ARE AVAILABLE FOR PITCHED ROOFS.

SPECIFY PITCH:
EXAMPLE: 7/12 PITCH = 30° SLOPE.

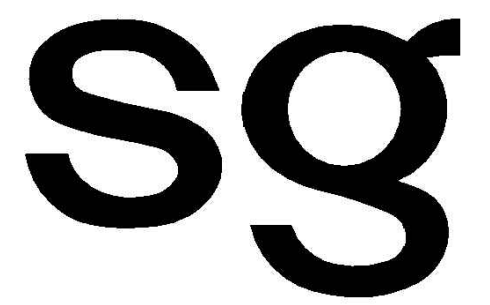


BACKDRAFT DAMPER INSTALLATION



JOB Sweetgreen - Forth Worth, TX	
LOCATION ARLINGTON, TX, 76006	
DATE 1/31/2022	JOB # 5301705
DWG # 3	DRAWN BY BT-32
REV.	SCALE 3/8" = 1'-0"

JFTE James F. Turner
Consulting Engineers, L.P.
8340 Meadow Rd, Suite 160
Dallas, Texas 75231
TEL 214-750-2900
JOB # 1119
TX REGISTRATION # 13342
OC/APPROV WKC/WKC



sweetgreen

3101 W. EXPOSITION BLVD.
LOS ANGELES, CALIFORNIA 90018

THESE DRAWINGS & SPECIFICATIONS ARE CONFIDENTIAL AND SHALL REMAIN THE SOLE PROPERTY OF SWEETGREEN CORPORATION. THEY SHALL NOT BE REPRODUCED IN WHOLE OR IN PART, SHARED WITH THIRD PARTIES OR USED IN ANY MANNER ON OTHER PROJECTS OR EXTENSIONS TO THIS PROJECT WITHOUT THE PRIOR WRITTEN CONSENT OF SWEETGREEN CORPORATION. THESE DRAWINGS & SPECIFICATIONS ARE INTENDED TO EXPRESS DESIGN INTENT FOR A PROTOTYPICAL SWEETGREEN STORE (WHICH IS SUBJECT TO CHANGE AT ANY TIME) AND MAY NOT REFLECT ACTUAL SITE CONDITIONS. NEITHER PARTY SHALL HAVE ANY OBLIGATION NOR LIABILITY TO THE OTHER (EXCEPT AS STATED ABOVE) UNTIL A WRITTEN AGREEMENT IS FULLY EXECUTED.

ARCHITECT OF RECORD:

HARLAN R. FAUST
ARCHITECT

HARLAN R. FAUST, ARCHITECT
14344 "Y" STREET, SUITE 204
OMAHA, NE 68137-2805
402.895.0878
402.895.9561 FAX
www.hraarchitects.com

STAMP:

CONSTRUCTION
ISSUE SET
5/23/22

Kimlin

PROJECT INFORMATION:
FORT WORTH (WEST BEND)

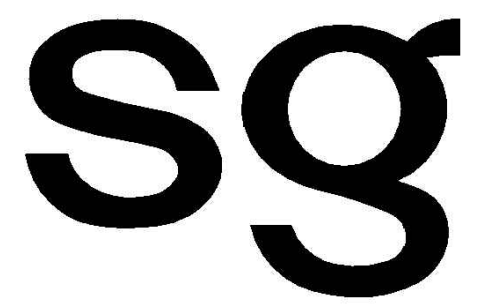
PROJECT INFORMATION:
1605 S. UNIVERSITY DRIVE
FORT WORTH, TX 76107

DRAWN BY:	XX
CHECKED BY:	XX
PROJECT MANAGER:	XX
SG DESIGN MANAGER:	XX
SG CONSTR. MANAGER:	XX
PROJECT NO:	XXXXXX
TEMPLATE VERSION:	210604.03

REV.	DATE	DESCRIPTION
RECEIVED BY D4 CONSTRUCTION DATE: 05/23/2022		

HOOD AND FAN
DETAILS

M303



sweetgreen

3101 W. EXPOSITION BLVD.
LOS ANGELES, CALIFORNIA 90018

THESE DRAWINGS & SPECIFICATIONS ARE CONFIDENTIAL AND SHALL REMAIN THE SOLE PROPERTY OF SWEETGREEN CORPORATION. THEY SHALL NOT BE REPRODUCED OR USED IN ANY MANNER ON OTHER PROJECTS OR EXTENSIONS TO THIS PROJECT WITHOUT THE PRIOR WRITTEN CONSENT OF SWEETGREEN CORPORATION. THESE DRAWINGS & SPECIFICATIONS ARE INTENDED TO EXPRESS DESIGN INTENT FOR A PROTOTYPICAL SWEETGREEN STORE (WHICH IS SUBJECT TO CHANGE AT ANY TIME) AND MAY NOT REFLECT ACTUAL SITE CONDITIONS. NEITHER PARTY SHALL HAVE ANY OBLIGATION OR LIABILITY TO THE OTHER (EXCEPT AS STATED ABOVE) UNTIL A WRITTEN AGREEMENT IS FULLY EXECUTED.

ARCHITECT OF RECORD:

HARLAN R. FAUST
ARCHITECT

HARLAN R. FAUST, ARCHITECT
14344 "Y" STREET, SUITE 204
OMAHA, NE 68137-2805
402.895.0878
402.895.9561 FAX
www.hraarchitects.com

STAMP:

CONSTRUCTION
ISSUE SET
5/23/22

Kinton

PROJECT INFORMATION:
FORT WORTH (WEST BEND)

PROJECT INFORMATION:
1605 S. UNIVERSITY DRIVE
FORT WORTH, TX 76107

DRAWN BY: XX
CHECKED BY: XX
PROJECT MANAGER: XX
SG DESIGN MANAGER: XX
SG CONSTR. MANAGER: XX
PROJECT NO: XXXXXX
TEMPLATE VERSION: 210604.03

REVISIONS
REV. DATE DESCRIPTION

RECEIVED BY D4 CONSTRUCTION
DATE: 05/23/2022

HOOD AND FAN
DETAILS

JFTE James F. Turner
Engineers, L.P.
Consulting Engineers
8340 Meadow Rd, Suite 160
Dallas, Texas 75231
TEL 214-750-2900
JOB # 1119
TX REGISTRATION # 13342

M304

EXHAUST FAN INFORMATION - JOB#5301705

FAN UNIT NO	TAG	QTY	FAN UNIT MODEL #	MANUFACTURER	CFM	ESP	RPM	MOTOR ENCL	HP	BHP	PHASE	VOLT	FLA	DISCHARGE VELOCITY	WEIGHT (LBS)	SONES
2	BATHROOM	1	SIF9DD	CAPTIVEAIRE	150	0.700	1685	ODP-ECM	0.125	0.0830	1	115	1.9		76	20

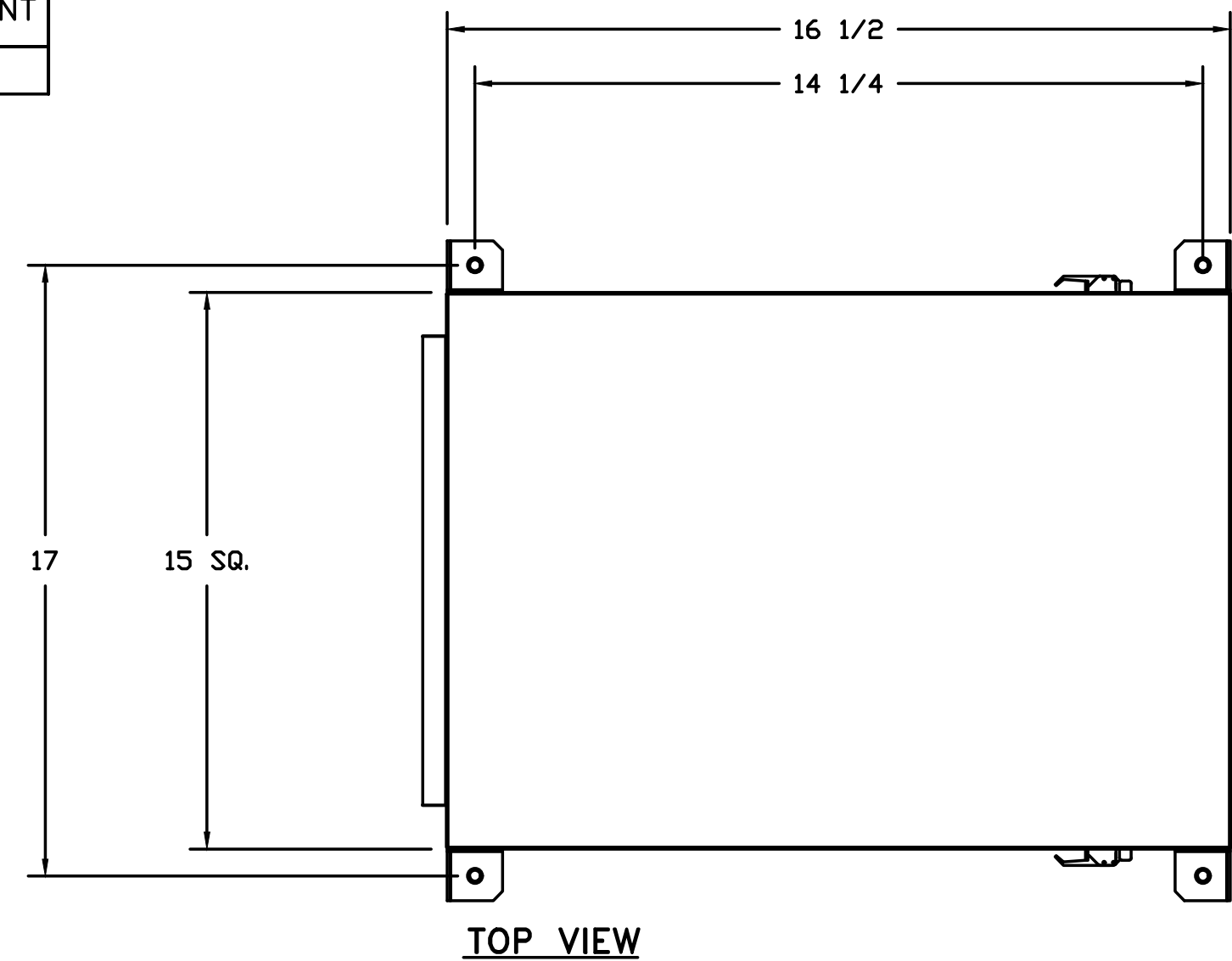
FAN OPTIONS

FAN UNIT NO	TAG	QTY	DESCRIPTION
2	BATHROOM	1	SIF9-10 - STRAIGHT DISCHARGE, STANDARD 10" DUCT CONNECTION
		1	SIF9-10 - INLET -STANDARD 10" DUCT CONNECTION
		1	ECM WIRING PACKAGE-EXHAUST - MANUAL OR 0-10VDC REFERENCE SPEED CONTROL (NIDEC MOTOR)
		1	HANGING SPRING VIBRATION ISOLATORS (SET OF 4), FOR INDOOR OR OUTDOOR USE WITH SQUARE INLINE FANS (HSA75)
		1	I 12-BDD DAMPER
		1	SIF - HORIZONTAL OVERHEAD MOUNT - PRE-INSTALLED MOUNTS (9-10)
1	2 YEAR PARTS WARRANTY		

FAN ACCESSORIES

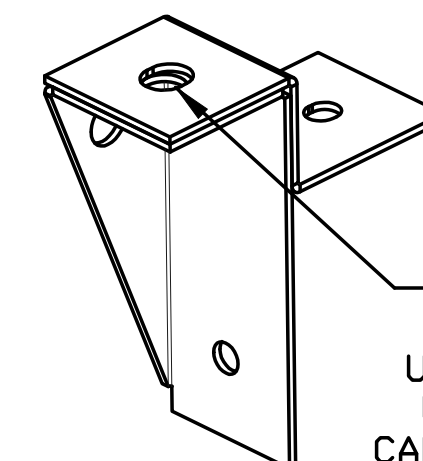
FAN UNIT NO	TAG	EXHAUST			SUPPLY			
		GREASE CUP	GRAVITY DAMPER	WALL MOUNT	SIDE DISCHARGE	GRAVITY DAMPER	MOTORIZED DAMPER	WALL MOUNT
2	BATHROOM		YES					

FAN #2 SIF9DD - EXHAUST FAN (BATHROOM)



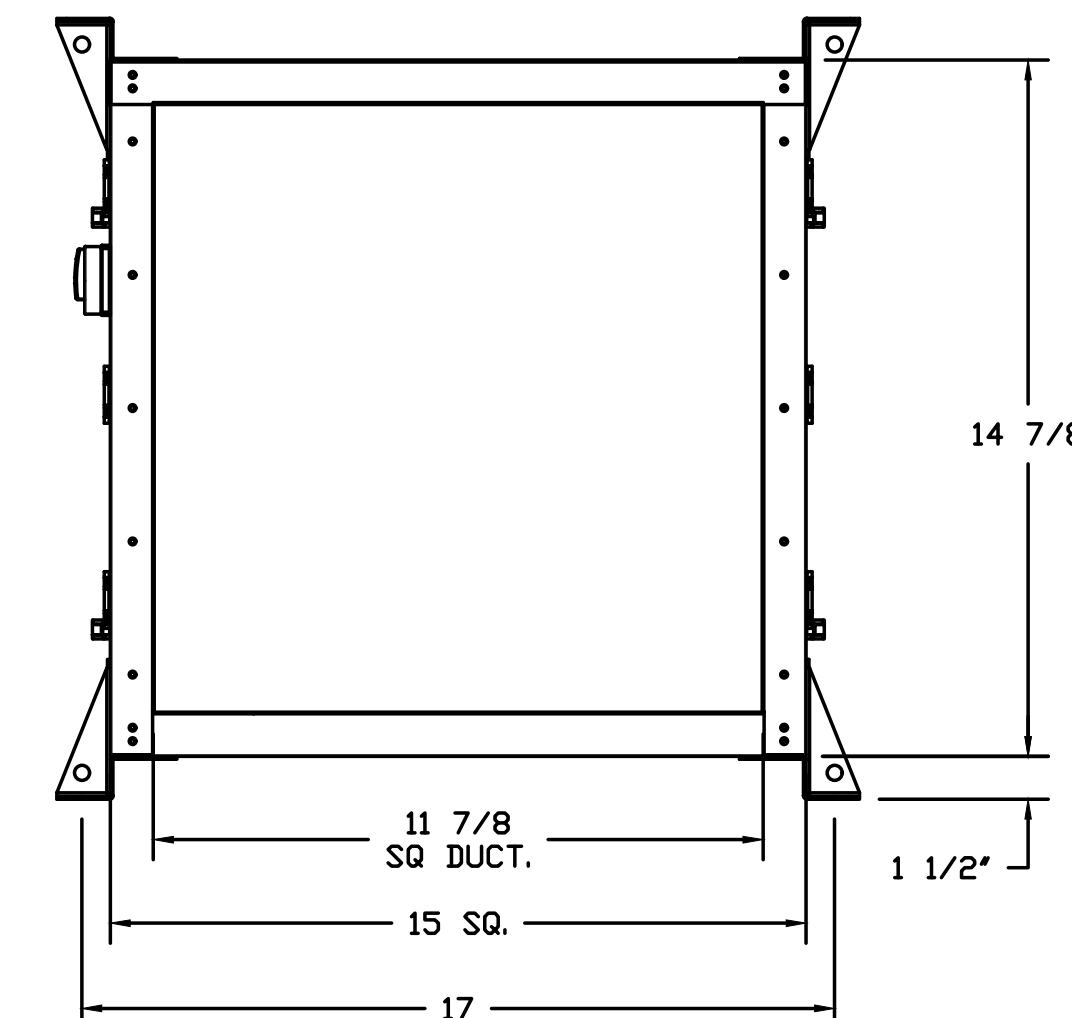
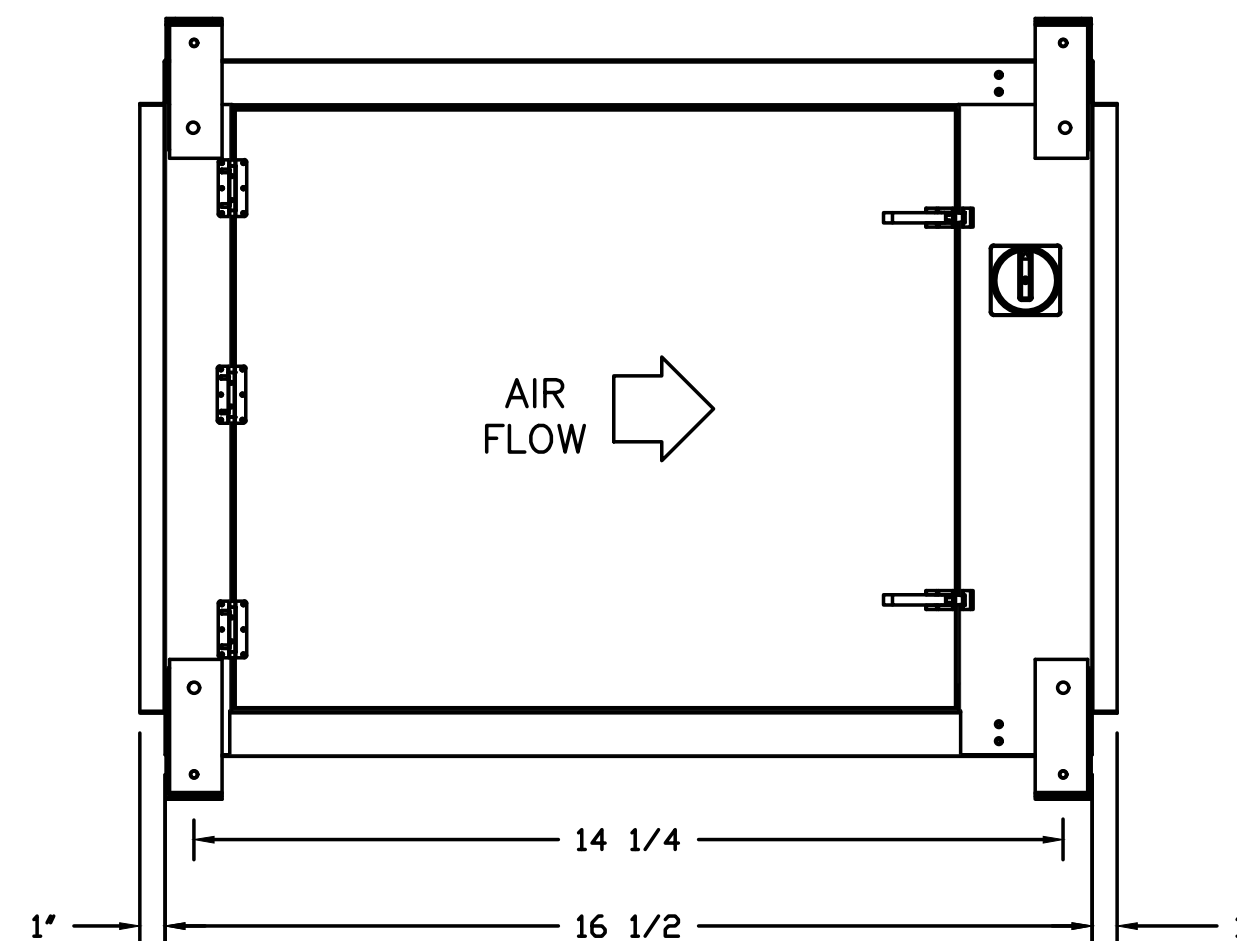
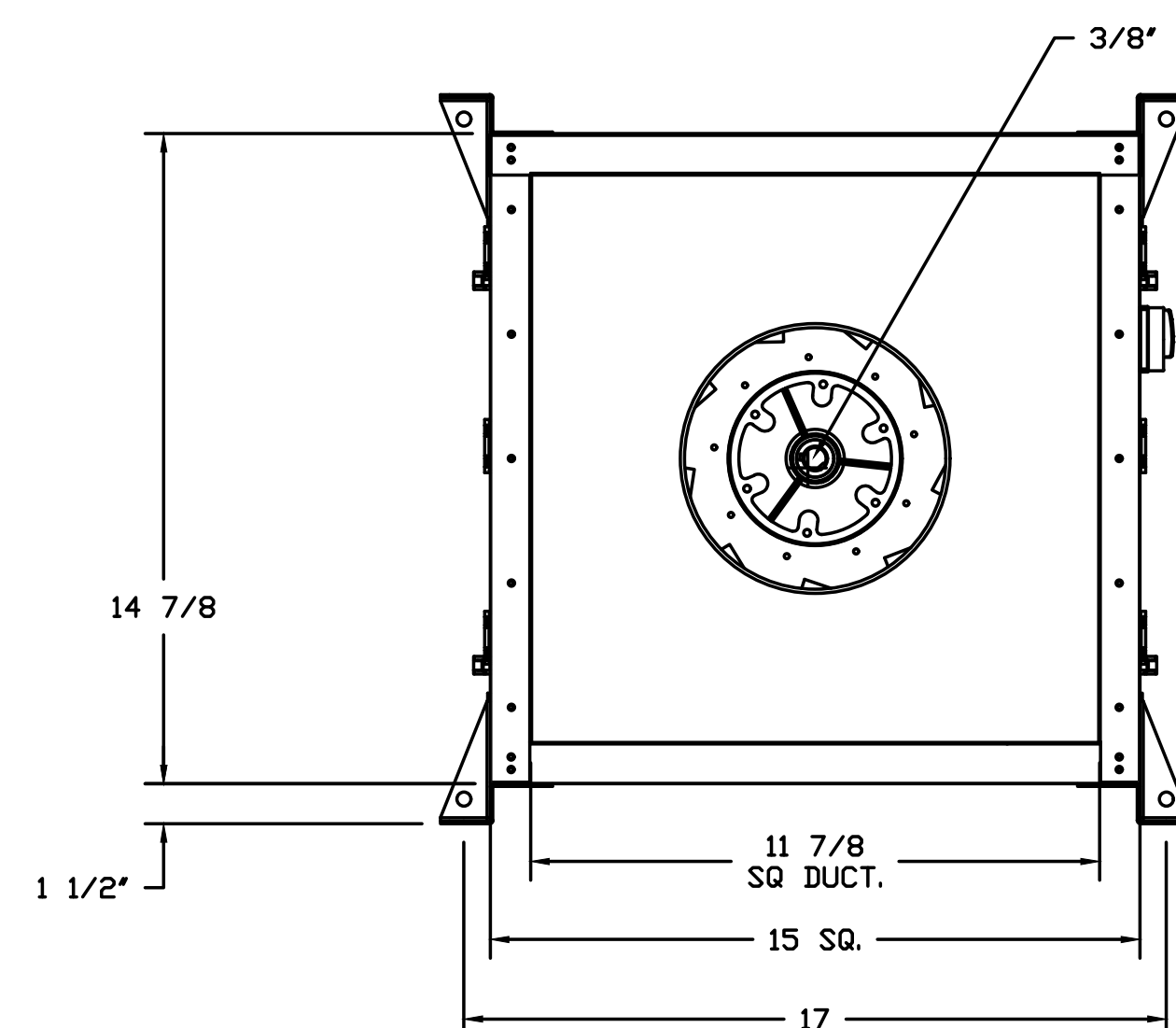
FEATURES:

- DIRECT DRIVE CONSTRUCTION (NO BELTS/PULLEYS).
- TWO ACCESS DOORS FOR EASY ACCESS.
- BACKWARD INCLINED NON-OVERLOADING WHEELS.
- UL705 LISTING.
- AMCA AIR & SOUND CERTIFIED.
- THERMAL OVERLOAD PROTECTION (SINGLE PHASE).



UNIVERSAL MOUNTING BRACKET

1/2" DIA. THREADED ROD ONLY
.560" DIA. MOUNTING HOLES.
USED WITH CEILING VIBRATION ISOLATORS.
USED WITH FLOOR VIBRATION ISOLATORS.
CAN BE RELOCATED IN THE FIELD AS NEEDED.



JOB Sweetgreen - Forth Worth, TX	
LOCATION ARLINGTON, TX, 76006	
DATE 1/31/2022	JOB # 5301705
DWG # 4	DRAWN BY BT-32
REV.	SCALE 3/8" = 1'-0"

DRAWN/DESIGN CAD/BJK DC/APP/WKC/WKC