

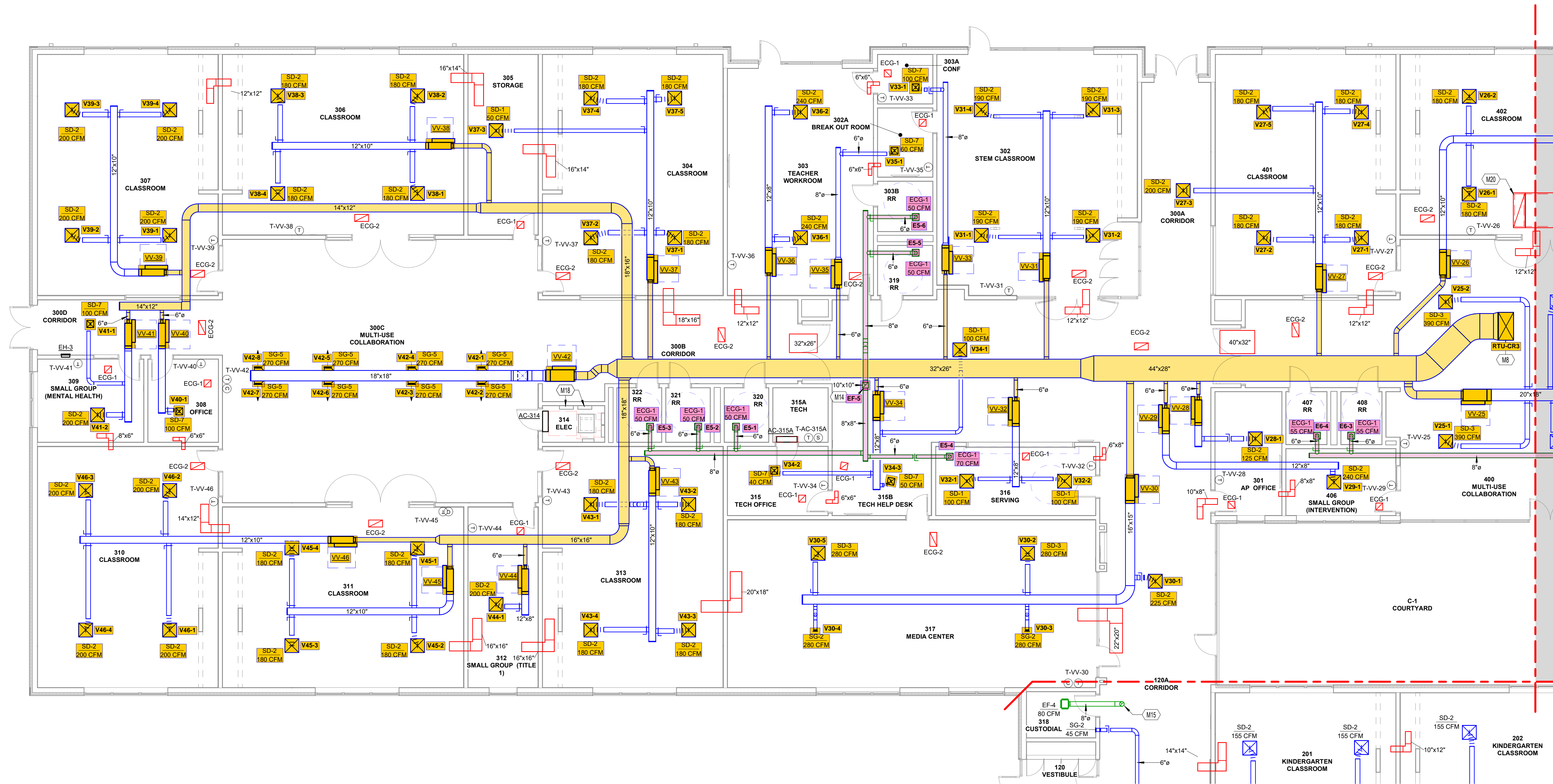
DAYTON REGIONAL STEM SCHOOL
K-5 BUILDING
 2850 DONATION CIRCLE, KETTERING, OH 45240
 DAYTON REGIONAL STEM SCHOOL
 1724 WOODMAN DRIVE, KETTERING, OH 45420

GENERAL DUCT PLAN NOTES:

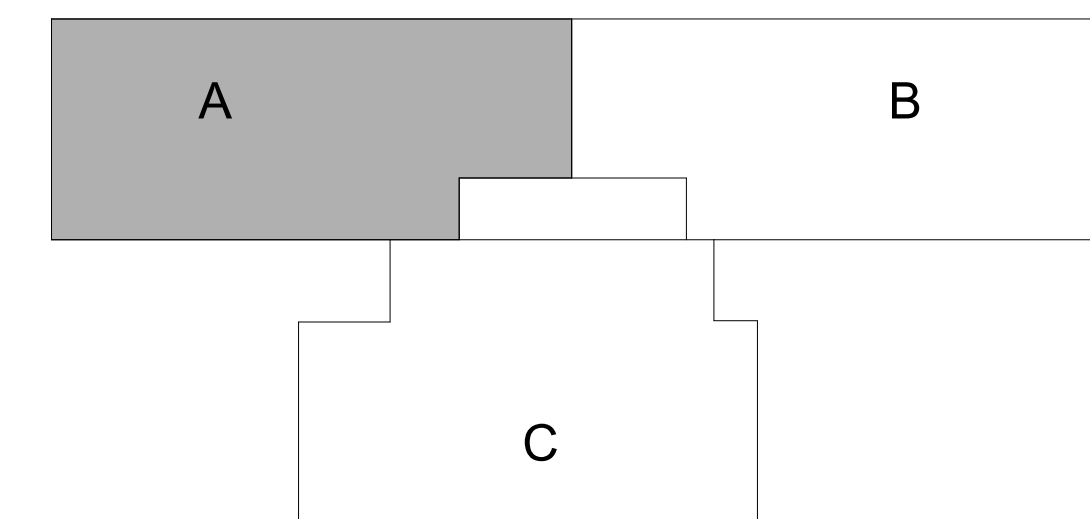
- A. INLET AND DISCHARGE DUCTS CONNECTING TO VAV BOXES ARE TO BE THE SAME SIZE AS VAV BOX INLET AND DISCHARGE RESPECTIVELY UNLESS NOTED OTHERWISE.
- B. DUCTS SERVING DIFFUSERS AND GRILLES ARE TO BE THE SAME SIZE AS DIFFUSER NECK SIZE OR GRILLE FACE UNLESS NOTED OTHERWISE.
- C. VAV BOX CONTROLLER ACCESS IS SHOWN AS A HASHED BOX.
- D. AIR TRANSFER DUCTS ARE 14" X 14" UNLESS NOTED OTHERWISE. CONTRACTOR TO PROVIDE ADDITIONAL TRANSFER OPENINGS ABOVE CEILING AS NEEDED FOR AIR RETURN.
- E. DO NOT ROUTE DUCTWORK OVER ELECTRICAL EQUIPMENT.
- F. PROVIDE AT LEAST 3 STRAIGHT DUCT DIAMETERS AT INLET OF VAV BOXES.
- G. DO NOT USE FLEXIBLE DUCTWORK AT INLET OF VAV BOX.
- H. PROVIDE VOLUME CONTROL DAMPERS IN RUN-OUT DUCT TO ALL SUPPLY AIR DEVICES.
- I. ALL DUCT DIMENSIONS SHOWN ARE INTERNAL DIMENSIONS.

KEYNOTES

- M8 SUPPLY AIR DUCT UP TO RTU-CR3
- M14 EXHAUST AIR DUCT UP TO EXHAUST FAN ON ROOF.
- M15 8" ROUND EXHAUST AIR DUCT UP TO ROOF.
- M18 TEMPERATURE CONTROL PANEL REQUIRING 120 V POWER. COORDINATE WITH TCC AND EC.
- M20 OPEN ELBOW UP



1 DUCTWORK PLAN AREA A
 M101 1/8" = 1'-0"



KEY PLAN
 NTS

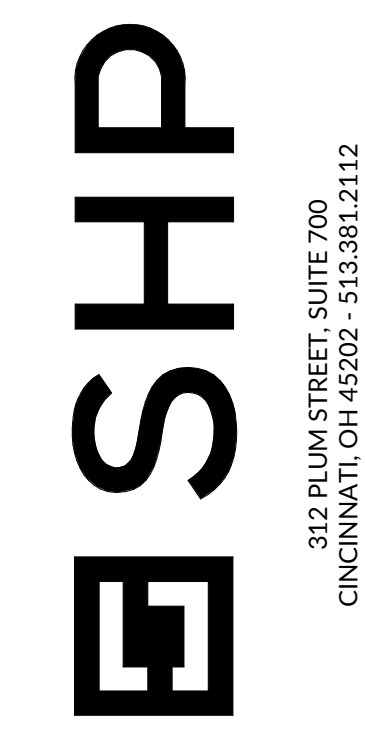
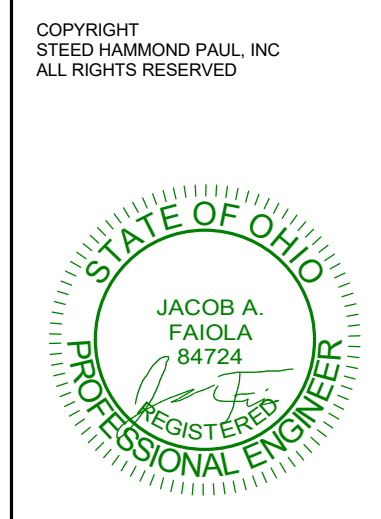
ISSUANCES

NO.	DATE	DESCRIPTION
04-05-24		SCHEMATIC DESIGN
05-28-24		OWNER PERMIT

MECHANICAL DUCTWORK PLAN AREA A

COMM NO. 2024026.01

M101



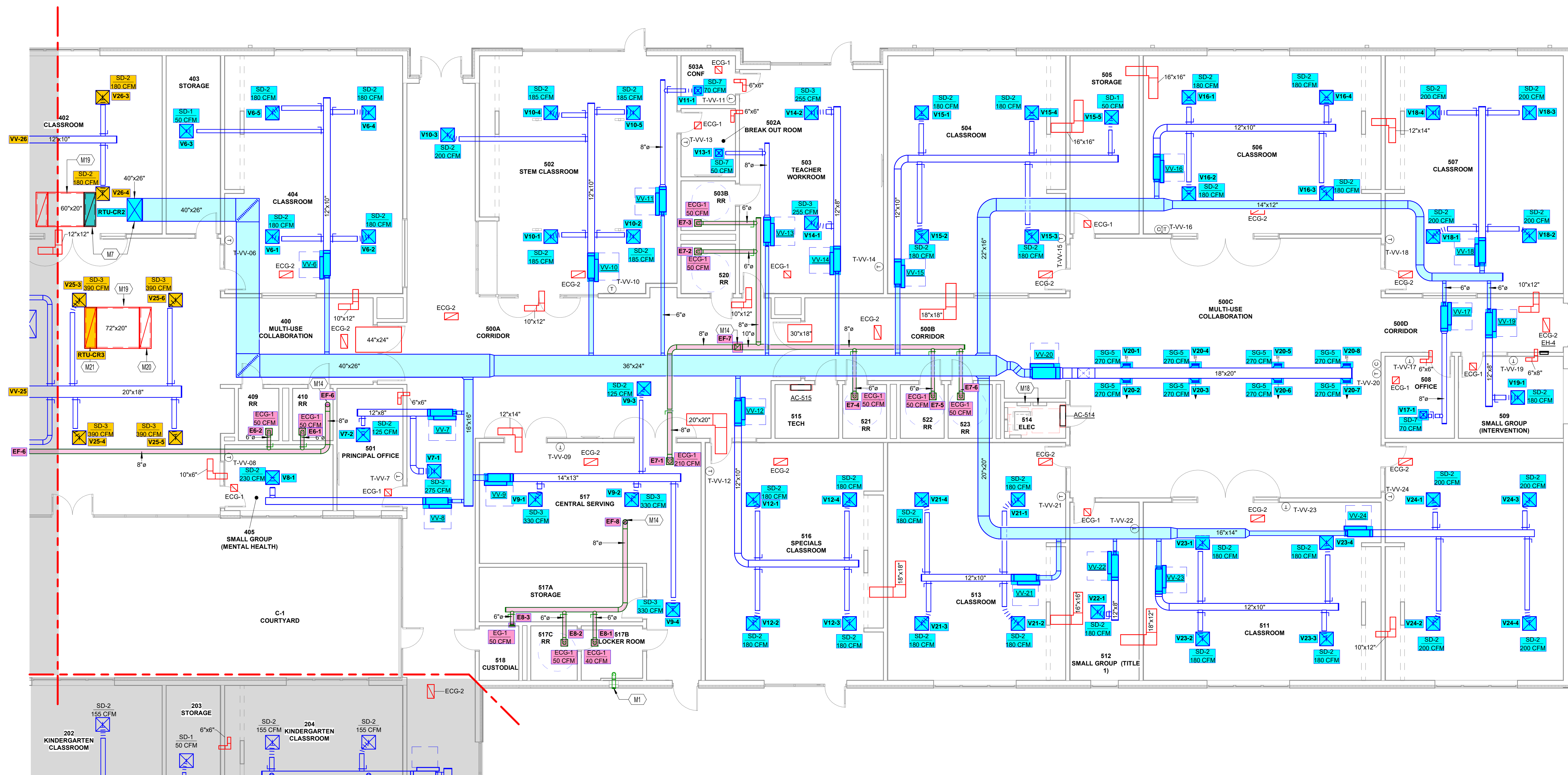
DAYTON REGIONAL STEM SCHOOL
K-5 BUILDING
 2850 DONATION CIRCLE, KETTERING, OH 45240
 DAYTON REGIONAL STEM SCHOOL
 1724 WOODMAN DRIVE, KETTERING, OH 45420

GENERAL DUCT PLAN NOTES:

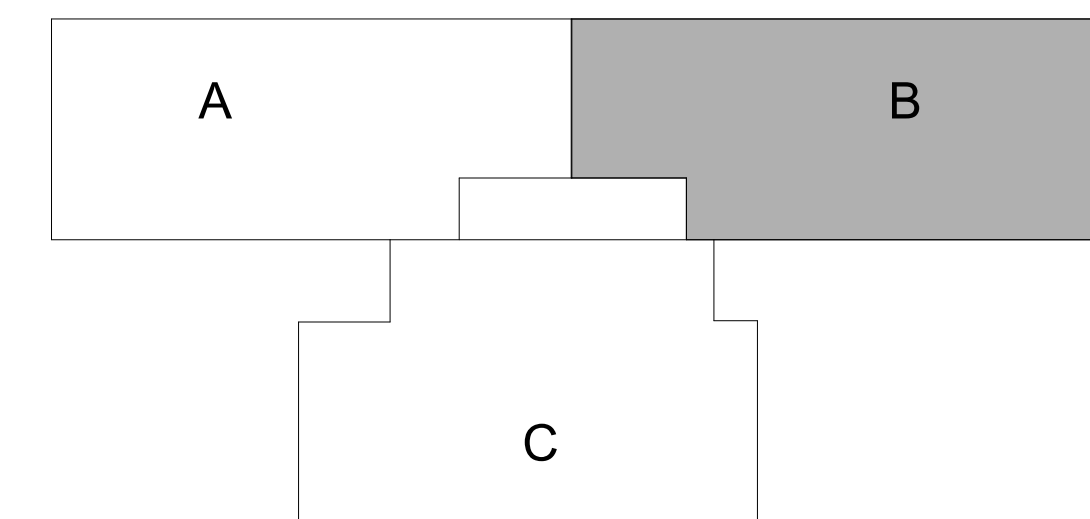
- A. INLET AND DISCHARGE DUCTS CONNECTING TO VAV BOXES ARE TO BE THE SAME SIZE AS VAV BOX INLET AND DISCHARGE RESPECTIVELY UNLESS NOTED OTHERWISE.
- B. DUCTS SERVING DIFFUSERS AND GRILLES ARE TO BE THE SAME SIZE AS DIFFUSER NECK SIZE OR GRILLE FACE UNLESS NOTED OTHERWISE.
- C. VAV BOX CONTROLLER ACCESS IS SHOWN AS A HASHED BOX.
- D. AIR TRANSFER DUCTS ARE 14" X 14" UNLESS NOTED OTHERWISE. CONTRACTOR TO PROVIDE ADDITIONAL TRANSFER OPENINGS ABOVE CEILING AS NEEDED FOR AIR RETURN.
- E. DO NOT ROUTE DUCTWORK OVER ELECTRICAL EQUIPMENT.
- F. PROVIDE AT LEAST 3 STRAIGHT DUCT DIAMETERS AT INLET OF VAV BOXES.
- G. DO NOT USE FLEXIBLE DUCTWORK AT INLET OF VAV BOX.
- H. PROVIDE VOLUME CONTROL DAMPERS IN RUN-OUT DUCT TO ALL SUPPLY AIR DEVICES.
- I. ALL DUCT DIMENSIONS SHOWN ARE INTERNAL DIMENSIONS.

KEYNOTES

- M1 PROVIDE PAINTABLE ALUMINIUM VENT GAP APPROVED FOR USE WITH DRYER EXHAUST. PAINT TO MATCH ADJACENT WALL SURFACE.
- M7 SUPPLY AND RETURN AIR DUCT UP TO RTU-CR2
- M14 EXHAUST AIR DUCT UP TO EXHAUST FAN ON ROOF. COORDINATE WITH TCC AND EC.
- M18 TEMPERATURE CONTROL PANEL REQUIRING 120 V POWER. COORDINATE WITH TCC AND EC.
- M19 PROVIDE 2" ACOUSTICAL DUCT LINER FOR RETURN AIR DUCT MAIN.
- M20 OPEN ELBOW UP
- M21 RETURN AIR DUCT UP TO RTU-CR3



1 DUCTWORK PLAN AREA B
 M102 1/8" = 1'-0"



KEY PLAN
 NTS

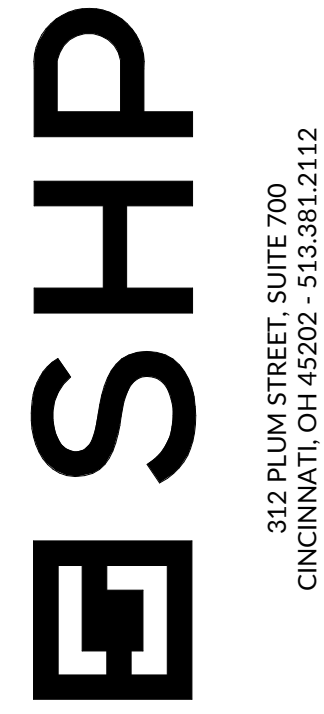
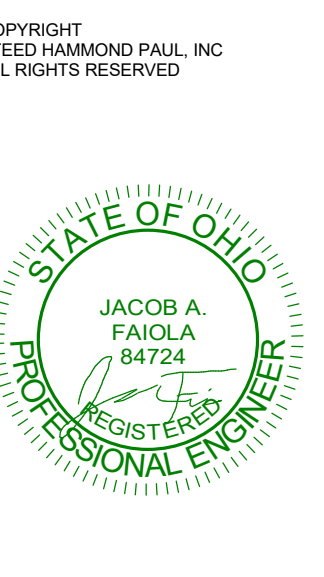
ISSUANCES

NO.	DATE	DESCRIPTION
04-05-24	SCHEMATIC DESIGN	
05-28-24	GA/PERMIT	

MECHANICAL DUCTWORK PLAN AREA B

COMM NO. 2024026.01

M102



DAYTON REGIONAL STEM SCHOOL
K-5 BUILDING
 2850 DONATION CIRCLE, KETTERING, OH 45240
 DAYTON REGIONAL STEM SCHOOL
 1724 WOODMAN DRIVE, KETTERING, OH 45420

ISSUANCES

NO.	DATE	DESCRIPTION
04-05-24		SCHEMATIC DESIGN
05-28-24		OWNER PERMIT

MECHANICAL DUCTWORK PLAN AREA C

COMM NO. 2024026.01

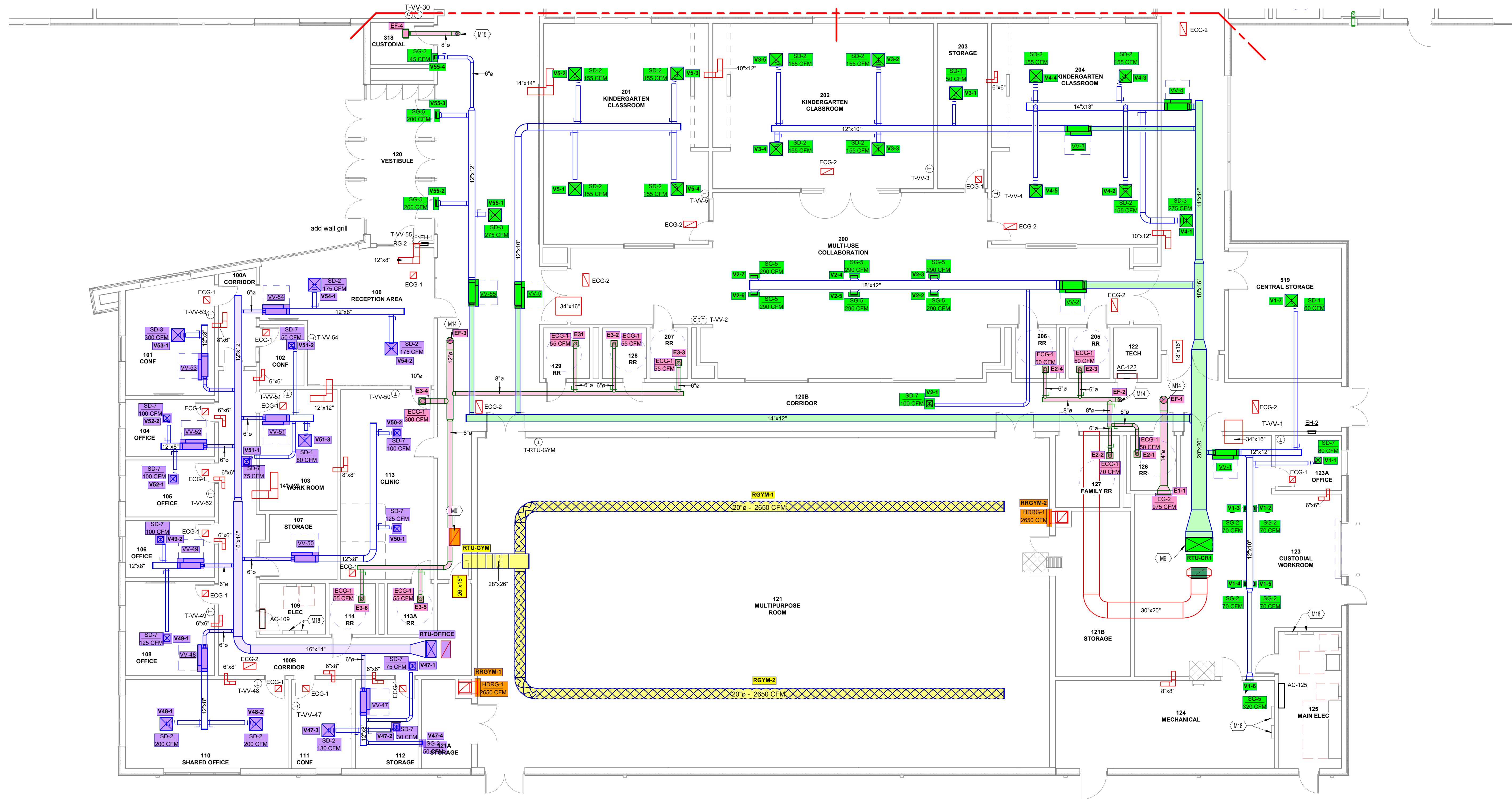
M103

GENERAL DUCT PLAN NOTES:

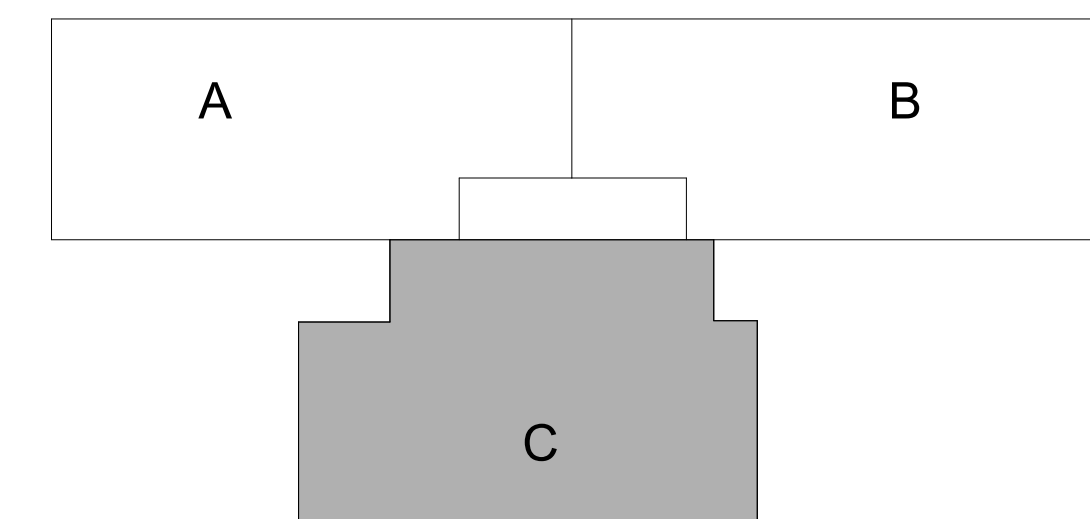
- INLET AND DISCHARGE DUCTS CONNECTING TO VAV BOXES ARE TO BE THE SAME SIZE AS VAV BOX INLET AND DISCHARGE RESPECTIVELY UNLESS NOTED OTHERWISE.
- DUCTS SERVING DIFFUSERS AND GRILLES ARE TO BE THE SAME SIZE AS DIFFUSER NECK SIZE OR GRILLE FACE UNLESS NOTED OTHERWISE.
- VAV BOX CONTROLLER ACCESS IS SHOWN AS A HASHED BOX.
- AIR TRANSFER DUCTS ARE 14" X 14" UNLESS NOTED OTHERWISE. CONTRACTOR TO PROVIDE ADDITIONAL TRANSFER OPENINGS ABOVE CEILING AS NEEDED FOR AIR RETURN.
- DO NOT ROUTE DUCTWORK OVER ELECTRICAL EQUIPMENT.
- PROVIDE AT LEAST 3 STRAIGHT DUCT DIAMETERS AT INLET OF VAV BOXES.
- DO NOT USE FLEXIBLE DUCTWORK AT INLET OF VAV BOX.
- PROVIDE VOLUME CONTROL DAMPERS IN RUN-OUT DUCT TO ALL SUPPLY AIR DEVICES.
- ALL DUCT DIMENSIONS SHOWN ARE INTERNAL DIMENSIONS.

KEYNOTES

- SUPPLY AND RETURN AIR DUCT UP TO RTU-CR1
- RETURN AIR DUCT UP TO RTU-GYM
- EXHAUST AIR DUCT UP TO EXHAUST FAN ON ROOF.
- 8" ROUND EXHAUST AIR DUCT UP TO ROOF.
- TEMPERATURE CONTROL PANEL REQUIRING 120 V POWER. COORDINATE WITH TCC AND EC.



1 DUCTWORK PLAN AREA C
 M103 1/8" = 1'-0"



KEY PLAN
 NTS

