

**Report By:**

National TAB  
1329 E. KEMPER ROAD  
SUITE 4210  
CINCINNATI, OH 45246



**Report: TAB Report**  
**Function: Test, Adjust, & Balance**  
**Date: 01/21/2026**  
**Completed By: National TAB**

# PROJECT

## 01-12-26 QT #1125 SPARTANSBURG, SC

2810 E MAIN STR

SPARTANSBURG, SC

**Client**

QUIKTRIP  
4705 SOUTH 129TH EAST AVENUE  
TULSA, OK 74134

# National TAB

Project: 01-12-26 QT #1125 SPARTANSBURG, SC

## Table Of Contents

| <b>Section</b>      | <b>Page #</b> |
|---------------------|---------------|
| Summary             | 3             |
| Remarks             | 4             |
| Balance Schedule    | 7             |
| Checklist           | 8             |
| RTU-1               | 14            |
| RTU-2               | 16            |
| RTU-3               | 18            |
| EF-1 - Exhaust      | 21            |
| Combi-Oven Grille   | 23            |
| EF-3 - Hood Exhaust | 24            |
| Kitchen Hood Type I | 26            |
| GRD Layout          | 28            |



# National TAB

Project: 01-12-26 QT #1125 SPARTANSBURG, SC  
Function: Test, Adjust, & Balance

## Project Summary

### Project Summary

The summary below provides a quick understanding of our scope of work and general testing procedures. Enclosed in the report are further details about your building performance including recommendations, asset data, and pictures. Our focus is to work with the trades to remedy any issues or deficiencies during the actual field balancing and not after the balancing has occurred to achieve a positive environment and outcome. The level of success is determined by the availability of the trades, possible parts needed, or time constraints.

### RTU's (Roof Top Units)

Each of the RTU's was measured with a flow hood to establish total flow. The total flow was then adjusted via the VFD so that airflow fell within design tolerances. All diffusers on the kitchen RTU were balanced to the engineer's design flow. The diffusers on the sales floor were only adjusted when there were noticeable issues present like drafting or dampers that were found completely closed. The Hoods On outside air rate was set by first establishing the typical QT set point at the Emerson controller and then making manually adjustments on the roof. The hoods off airflow setpoint was found by adjusting the damper position at the Emerson controller until the design airflow was achieved. Outside air was measured by reading the intake air opening with a velocity grid and multiplying by the free area. After completion of TAB all overrides were released.

### Kitchen Exhaust Hood & Associated Fans

The kitchen exhaust fan was measured at the hood filter bay utilizing a velocity matrix and a manufacturer's correction factor. Each filter velocity is multiplied by the manufacturer's corrected area. The sum of these readings equals the total flow of the exhaust fans. The total flow of the exhaust was then adjusted to within tolerance of the design flow.

### Restroom Exhaust Fans

The restroom exhaust fans were measured with a flow hood. The total flow was balanced for the fan with the exception of the new grille over the combi-oven, which was balanced to the listed design.

### Final Building Tests

After completing the test and balance the final building pressure was measured. It was confirmed that the building pressure fell within acceptable tolerances and that the pressure measurement coincides with the actual and design net airflow. Any deviations from these standards are noted throughout the report. The hood capture was tested at the perimeter of the hood and the cook top level with the equipment heat on to ensure satisfactory hood capture and containment.

## Issue List

- Hood End Panels Not Installed
- Incorrect Kitchen Diffusers

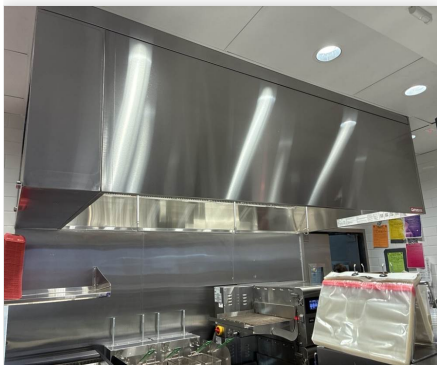


**01-12-26 QT #1125 SPARTANBURG, SC**

**Project Issue Information**

**Issue Name :** Hood End Panels Not Installed  
**Description :** There are no hood end panels installed as per the Hood Schedule.  
**Created By :** National TAB **Assigned To :** National TAB - Dan Hertenstein  
**Status :** Open  
**Priority :** High **Asset Tag :** HD1  
**Originated Date :** 01/15/2026 - Alex Bauer - National TAB

**Project Issue File Details**



**01/15/2026**

| HOOD / EXHAUST FAN SCHEDULE |            |         |               |        |        |             |        |
|-----------------------------|------------|---------|---------------|--------|--------|-------------|--------|
| MANUFACTURER                | MODEL      | SIZE    | CFM<br>OPTION | MISC.  | LIGHTS | FIRE SYSTEM | WEIGHT |
| CFE/FARE                    | BEVEND-3-F | PT-1000 | 01-150        | 01-150 | 01-150 | YES         | 30 LBS |
| CFE-3                       | CFE/FARE   | 1000FA  | 01-150        | 01-150 | 01-150 | YES         | 30 LBS |

**NOTES:**

- HOODS, FANS, AND ACCESSORIES SHALL BE MANUFACTURER-FURNISHED CONTRACTOR-INSTALLED.
- HOOD SHALL BE 40" STAINLESS STEEL.
- HOOD SHALL BE FURNISHED WITH FAN BELLOWS AND SUPPORT MOUNTED ON FRONT PANEL.
- MANUFACTURER-FURNISHED DOUBLE WALLS SHALL BE 16 GAUGE STAINLESS STEEL. DUCT KIT AND ALL REQUIRED CONNECTION ACCESSORIES FOR FIELD INSTALLATION FROM HOOD TO FAN.
- HOOD SHALL HAVE RIGHT AND LEFT **QUARTER END PANELS** AND FRONT LEFT AND RIGHT STAINLESS STEEL FLEX WRAPPER.
- HOOD SHALL BE FURNISHED WITH ONE LISTED GRADE FILTERS.
- HOOD SHALL BE FURNISHED WITH DUCT MOUNTED 80% SENSITIVE AND KNOX/KOOL FAN CONTROLS MOUNTED IN HOOD UTILITY CABINET.
- SYSTEM SHALL BE CAPABLE OF 100% FPM FAN BE SCHEDULED AND VARIABLY SPEED CONTROLLER WITH SYSTEM FOR SLOWING PRESSURE/DRAWN.
- EQUIPMENT AND DOWN CONNECTIONS ARE FACTORY-FURNISHED WITH HOOD UTILITY CABINET.
- HOOD SHALL BE LISTED AND LABELLED FOR IT'S CLEARANCE REQUIREMENTS TO COMPARTMENTS.
- FAN SHALL BE LISTED WITH VENTED AND WINDED LABEL GRADE BOX AND DISCONNECT.
- VARIABLE SPEED CONTROLLER PRE-MOUNTED IN FAN HOUSING SPEED CONTROLLER SHALL BE MANUALLY ADJUSTED BY TEST AND BALANCE CONTRACTOR.

**01/15/2026**



01-12-26 QT #1125 SPARTANSBURG, SC

Project Issue Information

**Issue Name :** Incorrect Kitchen Diffusers  
**Description :** The kitchen diffusers 3-1 through 3-4 are the incorrect type. They need to be the Titus S1 diffuser with the installed dampers to control the airflow.  
**Created By :** National TAB                      **Assigned To :** National TAB - Dan Hertenstein  
**Status :** Open  
**Priority :** Low                                      **Asset Tag :** RT-3  
**Originated Date :** 01/13/2026 - Alex Bauer - National TAB

Project Issue File Details



01/13/2026



01/13/2026

**GRILLE, REGISTER, & DIFFUSER SCHEDULE**

| MANUFACTURER | MODEL | SERVICE | FACE SIZE | DECK SIZE | DESCRIPTION                          | NOTES |
|--------------|-------|---------|-----------|-----------|--------------------------------------|-------|
| RT           | T105  | 3500    | 24X24     | 24X24     | 34" 20" BLAKE TYPED GRILLE AL. W/TE. | 12    |
| S            | T105  | 3005    | 22" X 22" | 22" X 22" | 20" BLAKE TYPED GRILLE AL. W/TE.     | 13    |

**NOTES:**  
 1. PRELIMINARY SCHEDULE FOR GRILLE, REGISTER, & DIFFUSER SCHEDULE.

01/13/2026

### AIR BALANCE SCHEDULE

| UNIT          | AREA SERVED | HOOD ON OA  |             | HOOD OFF OA |             | HOOD ON EXHAUST |             | HOOD OFF EXHAUST |            |
|---------------|-------------|-------------|-------------|-------------|-------------|-----------------|-------------|------------------|------------|
|               |             | DESIGN      | ACTUAL      | DESIGN      | ACTUAL      | DESIGN          | ACTUAL      | DESIGN           | ACTUAL     |
| RTU 1         | SALES       | 800         | 779         | 350         | 431         |                 |             |                  |            |
| RTU-2         | SALES       | 800         | 827         | 350         | 362         |                 |             |                  |            |
| RTU-3         | BOH/KITCHEN | 800         | 807         | 350         | 417         |                 |             |                  |            |
| EF-1          | RR/JANITOR  |             |             |             |             | 750             | 787         | 750              | 787        |
| EF-3          | HOOD        |             |             |             |             | 1350            | 1348        | 0                | 0          |
| <b>TOTALS</b> |             | <b>2400</b> | <b>2413</b> | <b>1050</b> | <b>1210</b> | <b>2100</b>     | <b>2135</b> | <b>750</b>       | <b>787</b> |

### HOODS ON

#### NET AIRFLOW CALCULATION

| TOTALS             | DESIGN     | ACTUAL     |
|--------------------|------------|------------|
| TOTAL OA           | 2400       | 2413       |
| TOTAL EXHAUST      | 2100       | 2135       |
| <b>NET AIRFLOW</b> | <b>300</b> | <b>278</b> |

| DOOR TESTED    | BUILDING PRESSURE MEASUREMENTS |
|----------------|--------------------------------|
| FRONT          | 0.003                          |
| SIDE           | 0.004                          |
| REAR           | 0.03                           |
| <b>AVERAGE</b> | <b>0.0123</b>                  |

### HOODS OFF

#### NET AIRFLOW CALCULATION

| TOTALS             | DESIGN     | ACTUAL     |
|--------------------|------------|------------|
| TOTAL OA           | 1050       | 1210       |
| TOTAL EXHAUST      | 750        | 787        |
| <b>NET AIRFLOW</b> | <b>300</b> | <b>423</b> |

| DOOR TESTED    | BUILDING PRESSURE MEASUREMENTS |
|----------------|--------------------------------|
| FRONT          | 0.0263                         |
| SIDE           | 0.0263                         |
| REAR           | 0.0074                         |
| <b>AVERAGE</b> | <b>0.02</b>                    |

**NOTES:**

See issues list.

## CheckList List

- 01: RTU's/AHU's
- 02: Exhaust Fans
- 03: Hoods
- 04: Final Tests



01-12-26 QT #1125 SPARTANSBURG, SC

CheckList Information

**Name :** 01: RTU's/AHU's **Status :** Completed

**Assigned Organization :** National TAB **Asset :**

**Requesting Organization :** National TAB

**Created Date :** 01/02/2026 - Trinity Dodds - National TAB

**Completed Date :** 01/13/2026 - Alex Bauer - National TAB

CheckList Item Details

RTU's/AHU's

|                             |      |
|-----------------------------|------|
| Evaporator coils are clean? | Pass |
|-----------------------------|------|

Comment:

|                            |      |
|----------------------------|------|
| Condenser coils are clean? | Pass |
|----------------------------|------|

Comment:

|   |     |
|---|-----|
| Gas piping is installed and valves are turned on? | N/A |
|---|-----|

Comment:

|   |      |
|---|------|
| Unit free of noticeable noise and vibration | Pass |
|---|------|

Comment:



01-12-26 QT #1125 SPARTANSBURG, SC

**CheckList Information**

**Name :** 02: Exhaust Fans **Status :** Completed  
**Assigned Organization :** National TAB **Asset :**  
**Requesting Organization :** National TAB  
**Created Date :** 01/02/2026 - Trinity Dodds - National TAB  
**Completed Date :** 01/13/2026 - Alex Bauer - National TAB

**CheckList Item Details**

EF's

Hinge kit installed installed on hood fan? Pass

Comment:

Flex conduit is long enough so that fan can be completely tilted back? Pass

Comment:

No major leakage around the fan base Pass

Comment:

Unit is free of noise and vibration Pass

Comment:



01-12-26 QT #1125 SPARTANSBURG, SC

**CheckList Information**

**Name :** 03: Hoods **Status :** Completed

**Assigned Organization :** National TAB **Asset :**

**Requesting Organization :** National TAB

**Created Date :** 01/02/2026 - Trinity Dodds - National TAB

**Completed Date :** 01/15/2026 - Alex Bauer - National TAB

**CheckList Item Details**

**HOODS**

|                                |      |
|--------------------------------|------|
| <b>Hood is free of alarms?</b> | Pass |
|--------------------------------|------|

**Comment:**

|                                |      |
|--------------------------------|------|
| <b>Hood is free of damage?</b> | Pass |
|--------------------------------|------|

**Comment:**

|  |      |
|--|------|
| <b>End panels are installed per prototype?</b> | Fail |
|--|------|

**Comment:**



01-12-26 QT #1125 SPARTANSBURG, SC

CheckList Information

**Name :** 04: Final Tests **Status :** Completed

**Assigned Organization :** National TAB **Asset :**

**Requesting Organization :** National TAB

**Created Date :** 01/02/2026 - Trinity Dodds - National TAB

**Completed Date :** 01/13/2026 - Alex Bauer - National TAB

CheckList Item Details

**FINAL CHECKS**

**HOOD CAPTURE TEST**

**List kitchen equipment turned on for testing**

**Comment:**

OVEN, FRYER.

**List smoke candle type used**

**Comment:**

SMOKE PELLET.

**Smoke test capture % - Perimeter of hood**

**Comment:**

100%

**Smoke test capture % - Top of cooking surface**

**Comment:**

100%

**WITNESS**

**Date test was completed**

01/13/2026

**Comment:**

---

**TAB tech name / Firm**

**Comment:**

ALEX BAUER/NTAB

---

**Site super name / Firm**

**Comment:**

NA

---

**Owner representative name / Firm (if Applicable)**

**Comment:**

NA

---

**BUILDING PRESSURE**

---

**Do actual net building airflow, design net building airflow, and pressure coincide? If not why? (All three should either be positive or negative)**

Pass

---

**Comment:**

---



# National TAB

Project: 01-12-26 QT #1125 SPARTANSBURG, SC

System/Unit: AHU/RTU

Asset: RT-1

AREA:SALES FLOOR

| Unit Data           |                     |
|---------------------|---------------------|
|                     | Actual              |
| MFG                 | AAON                |
| Serial Num          | 202403-ANEK30408    |
| Model Num           | RN-013-8-0-HA0A-152 |
| Num OA Filters 1    | 1                   |
| OA Filter Size 1    | 22.5X44.5           |
| Num Final Filter 1  | 2                   |
| Final Filter Size 1 | 19.5X46.5           |

| Motor Data     |        |
|----------------|--------|
|                | Actual |
| Horsepower     | 3      |
| Motor Rpm      | 1760   |
| Phase          | 3      |
| Rated Voltage  | 208    |
| Rated Amperage | 10.6   |

| Test Data                      |        |          |
|--------------------------------|--------|----------|
|                                | Design | Actual   |
| SF CFM                         | 4200   | 4347     |
| SF RPM                         | -      | 1355     |
| OA CFM (Hoods On)              | 800    | 779      |
| OA CFM (Hoods Off)             | 350    | 431      |
| RL Voltage                     | -      | 159 VFD  |
| RL Amperage                    | -      | 7.65 VFD |
| VFD Max SetPt                  | -      | 46.2 Hz  |
| OA Damper Position (Hoods On)  | -      | 46%      |
| OA Damper Position (Hoods Off) | -      | CLOSED   |

| Performance Data |        |
|------------------|--------|
|                  | Actual |
| MA Plenum SP     | -0.60" |
| Fan Suction SP   | -0.81" |
| Fan Discharge SP | 0.49"  |
| Total ESP        | 1.09"  |
| Fan Total SP     | 1.30"  |

| General                    |        |
|----------------------------|--------|
|                            | Actual |
| Fan Rotation Correct       | YES    |
| Unit Filters Clean         | YES    |
| Condensate Drain Installed | YES    |

Completed By: Alex Bauer on 01/13/2026





# National TAB

Project: 01-12-26 QT #1125 SPARTANSBURG, SC

System/Unit: AHU/RTU

Asset: RT-2

AREA:SALES FLOOR

| Unit Data           |                     |
|---------------------|---------------------|
|                     | Actual              |
| MFG                 | AAON                |
| Serial Num          | 202403-ANEK30409    |
| Model Num           | RN-013-8-0-HA0A-152 |
| Num OA Filters 1    | 1                   |
| OA Filter Size 1    | 22.5X44.5           |
| Num Final Filter 1  | 2                   |
| Final Filter Size 1 | 19.5X46.5           |

| Motor Data     |        |
|----------------|--------|
|                | Actual |
| Horsepower     | 3      |
| Motor Rpm      | 1760   |
| Phase          | 3      |
| Rated Voltage  | 208    |
| Rated Amperage | 10.6   |

| Test Data                      |        |          |
|--------------------------------|--------|----------|
|                                | Design | Actual   |
| SF CFM                         | 4200   | 4096     |
| SF RPM                         | -      | 1302     |
| OA CFM (Hoods On)              | 800    | 827      |
| OA CFM (Hoods Off)             | 350    | 362      |
| RL Voltage                     | -      | 148 VFD  |
| RL Amperage                    | -      | 7.54 VFD |
| VFD Max SetPt                  | -      | 44.4 Hz  |
| OA Damper Position (Hoods On)  | -      | 46%      |
| OA Damper Position (Hoods Off) | -      | CLOSED   |

| Performance Data |        |
|------------------|--------|
|                  | Actual |
| MA Plenum SP     | -0.65" |
| Fan Suction SP   | -0.85" |
| Fan Discharge SP | 0.28"  |
| Total ESP        | 1.50"  |
| Fan Total SP     | 1.13"  |

| General                    |        |
|----------------------------|--------|
|                            | Actual |
| Fan Rotation Correct       | YES    |
| Unit Filters Clean         | YES    |
| Condensate Drain Installed | YES    |

Completed By: Alex Bauer on 01/13/2026

Notes:  
Diffuser 2-1 could not be adjusted.

Written By: Alex Bauer on 01/13/2026





# National TAB

Project: 01-12-26 QT #1125 SPARTANSBURG, SC

## System/Unit: AHU/RTU

Asset: RT-3

AREA:BOH/KITCHEN

| Unit Data           |                     |
|---------------------|---------------------|
|                     | Actual              |
| MFG                 | AAON                |
| Serial Num          | 202403-ANEK30407    |
| Model Num           | RN-013-8-0-HA0A-152 |
| Num OA Filters 1    | 1                   |
| OA Filter Size 1    | 22.5X44.5           |
| Num Final Filter 1  | 2                   |
| Final Filter Size 1 | 19.5X46.5           |

| Motor Data     |        |
|----------------|--------|
|                | Actual |
| Horsepower     | 3      |
| Motor Rpm      | 1760   |
| Phase          | 3      |
| Rated Voltage  | 208    |
| Rated Amperage | 10.6   |

| Test Data                      |        |          |
|--------------------------------|--------|----------|
|                                | Design | Actual   |
| SF CFM                         | 4200   | 4086     |
| SF RPM                         | -      | 1619     |
| OA CFM (Hoods On)              | 800    | 807      |
| OA CFM (Hoods Off)             | 350    | 417      |
| RL Voltage                     | -      | 214 VFD  |
| RL Amperage                    | -      | 10.4 VFD |
| VFD Max SetPt                  | -      | 55 Hz    |
| OA Damper Position (Hoods On)  | -      | 46%      |
| OA Damper Position (Hoods Off) | -      | CLOSED   |

| Performance Data |        |
|------------------|--------|
|                  | Actual |
| MA Plenum SP     | -0.86" |
| Fan Suction SP   | -1.08" |
| Fan Discharge SP | 1.94"  |
| Total ESP        | 2.80"  |
| Fan Total SP     | 3.02"  |

| General                    |        |
|----------------------------|--------|
|                            | Actual |
| Fan Rotation Correct       | YES    |
| Unit Filters Clean         | YES    |
| Condensate Drain Installed | YES    |

Completed By: Alex Bauer on 01/13/2026





# National TAB

Project:01-12-26 QT #1125 SPARTANSBURG, SC

## AHU/RTU

### Diffuser Supply (GRD)

#### RT-3/BOH/KITCHEN

| Asset      |                 |      |      |            |    |        |        |           |             |
|------------|-----------------|------|------|------------|----|--------|--------|-----------|-------------|
| Asset Name | Location        | Type | Size | DESIGN CFM | AK | CFM(1) | CFM(2) | FINAL CFM | % to design |
| SGRD1      | SUPPORT SERVICE | SI   | 12"  | 800        | 1  | 736    | 752    | 736       | 92.0        |
| SGRD2      | SUPPORT SERVICE | SI   | 12"  | 800        | 1  | 831    | 858    | 831       | 103.9       |
| SGRD3      | SUPPORT SERVICE | SI   | 12"  | 800        | 1  | 770    | 867    | 770       | 96.3        |
| SGRD4      | SUPPORT SERVICE | SI   | 12"  | 800        | 1  | 728    | 848    | 728       | 91.0        |
| SGRD5      | DOCK            | ES   | 10"  | 400        | 1  | 439    | 708    | 439       | 109.8       |
| SGRD6      | WORKROOM        | ES   | 10"  | 400        | 1  | 372    | 507    | 372       | 93.0        |
| SGRD7      | WORKROOM        | ES   | 8"   | 200        | 1  | 210    | 224    | 210       | 105.0       |
| Total      |                 |      |      | 4200       |    | 4086   | 4764   | 4086      | 97.29%      |



# National TAB

Project: 01-12-26 QT #1125 SPARTANSBURG, SC

## System/Unit: FAN - Exhaust

Asset: EF1

AREA:RR/JANITOR

| Unit Data     |             |
|---------------|-------------|
|               | Actual      |
| MFG           | CAPTIVEAIRE |
| Model Num     | DR50HFA     |
| Serial Num    | 6712325     |
| Type          | DOWNBLAST   |
| Configuration | VERTICAL    |

| Test Data        |        |        |
|------------------|--------|--------|
|                  | Design | Actual |
| CFM              | 750    | 787    |
| Fan Rotation     | -      | CCW    |
| System SetPt     | -      | LOW    |
| Total ESP        | -      | 0.34"  |
| Fan Inlet SP     | -      | -0.34" |
| Fan Discharge SP | -      | ATM    |

| Motor Data       |        |
|------------------|--------|
|                  | Actual |
| Motor MFG        | HSSA   |
| Frame            | 48Y    |
| Horsepower       | 0.50   |
| Motor Rpm        | 1625   |
| Phase            | 1      |
| Voltage (rated)  | 115    |
| Amperage (rated) | 5.6    |
| Service Factor   | 1      |

Completed By: Alex Bauer on 01/13/2026

**Notes:**

NO DAMPER INSTALLED OR ACCESSIBLE FOR COMBO-OVEN EXHAUST GRILLE. UNABLE TO LOWER TO DESIGN, NOT ANTICIPATED TO CAUSE ANY ISSUE.

Written By: Michael McDonnell on 01/27/2026

**Unit Data - PHOTO LOG**



**01/13/2026**



# National TAB

Project:01-12-26 QT #1125 SPARTANSBURG, SC

Diffuser Ret/Exh (GRD)

## EF1/RR/JANITOR

| Asset      |                 |      |      |            |    |        |        |           |             |
|------------|-----------------|------|------|------------|----|--------|--------|-----------|-------------|
| Asset Name | Location        | Type | Size | DESIGN CFM | AK | CFM(1) | CFM(2) | FINAL CFM | % to design |
| EGRD4      | SUPPORT SERVICE | RI   | 8"   | 150        | 1  | 172    | 350    | 172       | 114.7       |
| Total      |                 |      |      | 150        |    | 172    | 350    | 172       | 114.67%     |

| Asset | Notes  | Date       | Written By        |
|-------|--|------------|-------------------|
| EGRD4 | NO DAMPER INSTALLED, NOT ANTICIPATED TO CAUSE ANY ISSUE. | 01/27/2026 | Michael McDonnell |



# National TAB

Project: 01-12-26 QT #1125 SPARTANSBURG, SC

## System/Unit: FAN - Exhaust

Asset: EF3

AREA:KITCHEN HD

| Unit Data     |             |
|---------------|-------------|
|               | Actual      |
| MFG           | CAPTIVEAIRE |
| Model Num     | DU50HFA     |
| Serial Num    | 8189416     |
| Type          | UPBLAST     |
| Configuration | VERTICAL    |

| Motor Data       |        |        |
|------------------|--------|--------|
|                  | Design | Actual |
| Motor MFG        | -      | HSSA   |
| Frame            | -      | 48     |
| Horsepower       | 1/2    | 0.50   |
| Motor Rpm        | -      | 1800   |
| Phase            | -      | 1      |
| Voltage (rated)  | -      | 115    |
| Amperage (rated) | -      | 6.2    |

| Test Data        |        |         |
|------------------|--------|---------|
|                  | Design | Actual  |
| CFM              | 1350   | 1348    |
| Fan RPM          | -      | 1585    |
| Fan Rotation     | -      | CCW     |
| Motor RPM        | -      | 1585    |
| System SetPt     | -      | 55.8 Hz |
| Total ESP        | -      | 0.21"   |
| Fan Inlet SP     | -      | -0.21"  |
| Fan Discharge SP | -      | ATM     |

Completed By: Alex Bauer on 01/13/2026

## Unit Data - PHOTO LOG



01/13/2026



# National TAB

Project: 01-12-26 QT #1125 SPARTANSBURG, SC

System/Unit: Kitchen Hood Type I

Asset: HD1

AREA:GRIDDLE

| Unit Data        |             |                  |
|------------------|-------------|------------------|
|                  | Design      | Actual           |
| MFG              | CAPTIVEAIRE | CAPTIVEAIRE      |
| Model Num        | 6030ND-2-F  | 6030ND-2         |
| Job / Serial Num | -           | 8189416          |
| Type             | -           | TYPE I<br>CANOPY |
| Hood length      | -           | 120"             |
| Hood Width       | -           | 60"              |

| Test Data Exhaust       |        |                   |
|-------------------------|--------|-------------------|
|                         | Design | Actual            |
| Filter Type             | -      | BAFFLE<br>FILTERS |
| Filter Size 1           | -      | 16X20             |
| Filter Qty 1            | -      | 6                 |
| Filter AK factor size 1 | -      | 2.08              |
| Filter Total AK Area    | -      | 12.48             |
| Filter1 FPM             | -      | 110               |
| Filter2 FPM             | -      | 144               |
| Filter3 FPM             | -      | 96                |
| Filter4 FPM             | -      | 139               |
| Filter5 FPM             | -      | 72                |
| Filter6 FPM             | -      | 90                |
| Filter Ave FPM(corr)    | -      | 108               |
| CFM                     | 1350   | 1348              |

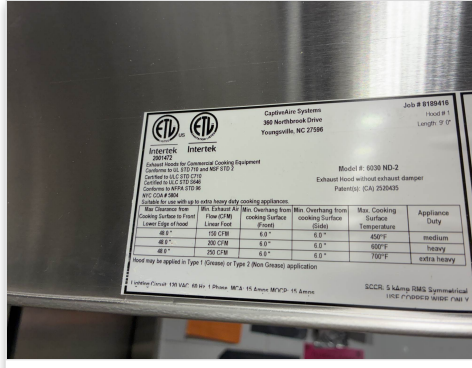
| Cooking Equipment |        |
|-------------------|--------|
|                   | Actual |
| Item 1            | OVEN   |
| Item 2            | FRYER  |

Completed By: Alex Bauer on 01/13/2026

# Unit Data - PHOTO LOG

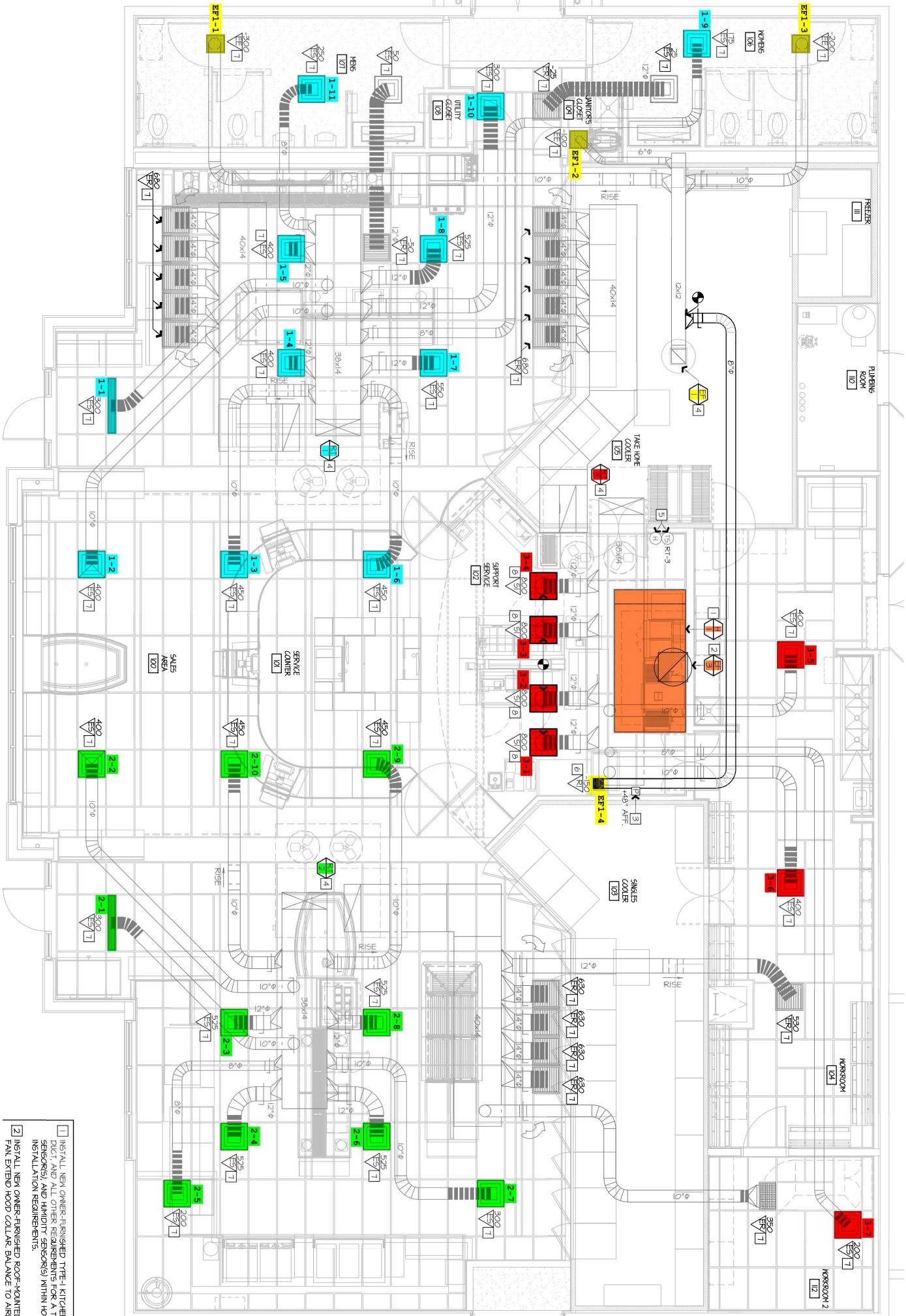


01/13/2026



01/13/2026

1. [Open](#) IMG\_0525.mp4



- 1 INSTALL NEW OWNER-FURNISHED TYPE-I KITCHEN EXHAUST SYSTEM (SENSORS AND HUMIDITY SENSORS) WITHIN HOODS TO MEET ALL HEALTH AND SAFETY REQUIREMENTS.
- 2 INSTALL NEW OWNER-FURNISHED ROOF-MOUNTED EXHAUST FAN WITH FAN EXTERIOR HOOD COLLAR, BALANCE TO AIRFLOW AND EXHAUST TO