

FOR QUESTIONS, CALL THE  
Highwoods Group  
REGION 40  
PHONE: (919) 875 - 0420  
EMAIL: reg40@captiveaire.com

PATENT NUMBERS  
EXHAUST HOODS ND-2/BD-2/SND-2 (CANADA) - CA PATENT 2520435 C.

**SPECIFICATION: CAPTRATE® GREASE-STOP® SOLID FILTER**

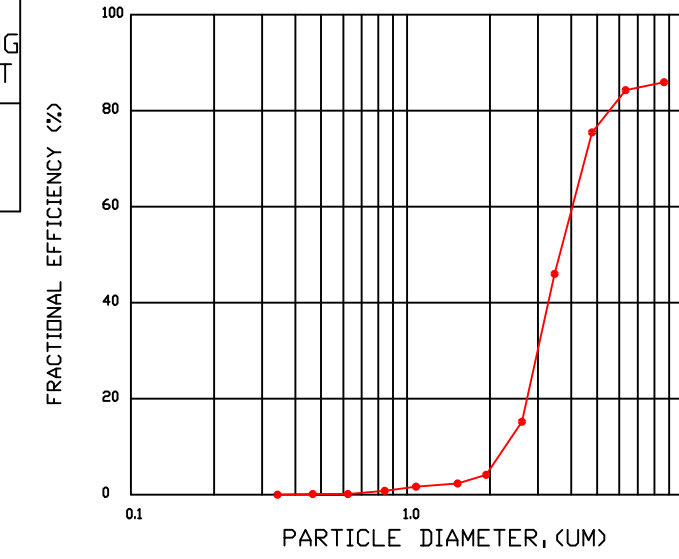
THE CAPTRATE GREASE-STOP SOLID FILTER IS A SINGLE-STAGE FILTER FEATURING A UNIQUE S-Baffle DESIGN IN CONJUNCTION WITH A SLOTTED REAR Baffle DESIGN, TO DELIVER EXCEPTIONAL FILTRATION EFFICIENCY.

FILTER IS STAINLESS STEEL CONSTRUCTION, AND SIZED TO FIT INTO STANDARD 2-INCH DEEP HOOD CHANNEL(S).

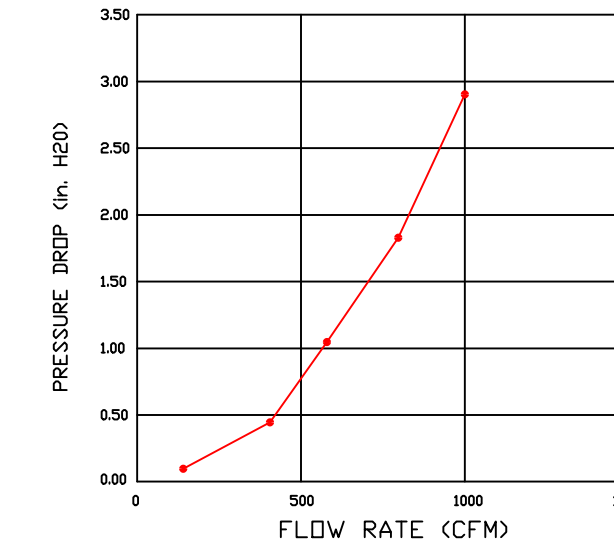
UNITS SHALL INCLUDE STAINLESS STEEL HANDLES AND A FASTENING DEVICE TO SECURE THE TWO COMPONENTS WHEN ASSEMBLED.

GREASE EXTRACTION EFFICIENCY PERFORMANCE SHALL REMOVE AT LEAST 75% OF GREASE PARTICLES FIVE MICRONS IN SIZE, AND 85% GREASE PARTICLES SEVEN MICRONS IN SIZE AND LARGER, WITH A CORRESPONDING PRESSURE DROP NOT TO EXCEED 1.0 INCHES OF WATER GAUGE. THE CAPTRATE GREASE-STOP SOLID WAS TESTED TO ASTM STANDARD ASTM F2519-05. MANUFACTURER APPROVED FOR USE IN SOLID FUEL APPLICATIONS AS A SPARK ARRESTER.

EFFICIENCY VS. PARTICLE DIAMETER



PRESSURE DROP VS. FLOW RATE



CAPTRATE FILTERS ARE BUILT IN COMPLIANCE WITH:  
NFPA #96.  
NSF STANDARD #2.  
UL STANDARD #1046.  
INT. MECH. CODE (IMC).  
ULC-S649.



**HOOD INFORMATION - JOB#7264184**

| HOOD NO | TAG | MODEL     | MANUFACTURER | LENGTH | MAX COOKING TEMP | TYPE | APPLIANCE DUTY | DESIGN CFM/FT | TOTAL EXH CFM | EXHAUST PLENUM RISER(S) |      |        |      | HOOD CONSTRUCTION | HOOD CONFIG |                      |       |            |
|---------|-----|-----------|--------------|--------|------------------|------|----------------|---------------|---------------|-------------------------|------|--------|------|-------------------|-------------|----------------------|-------|------------|
|         |     |           |              |        |                  |      |                |               |               | WIDTH                   | LENG | HEIGHT | DIA  |                   | CFM         | VEL                  | SP    | END TO END |
| 1       |     | 5424 ND-2 | CAPTIVEAIRE  | 9' 4"  | 600 DEG          | I    | HEAVY          | 204           | 1900          | 10"                     | 18"  | 4"     | 1900 | 1520              | -0.818"     | 430 SS WHERE EXPOSED | ALONE | ALONE      |

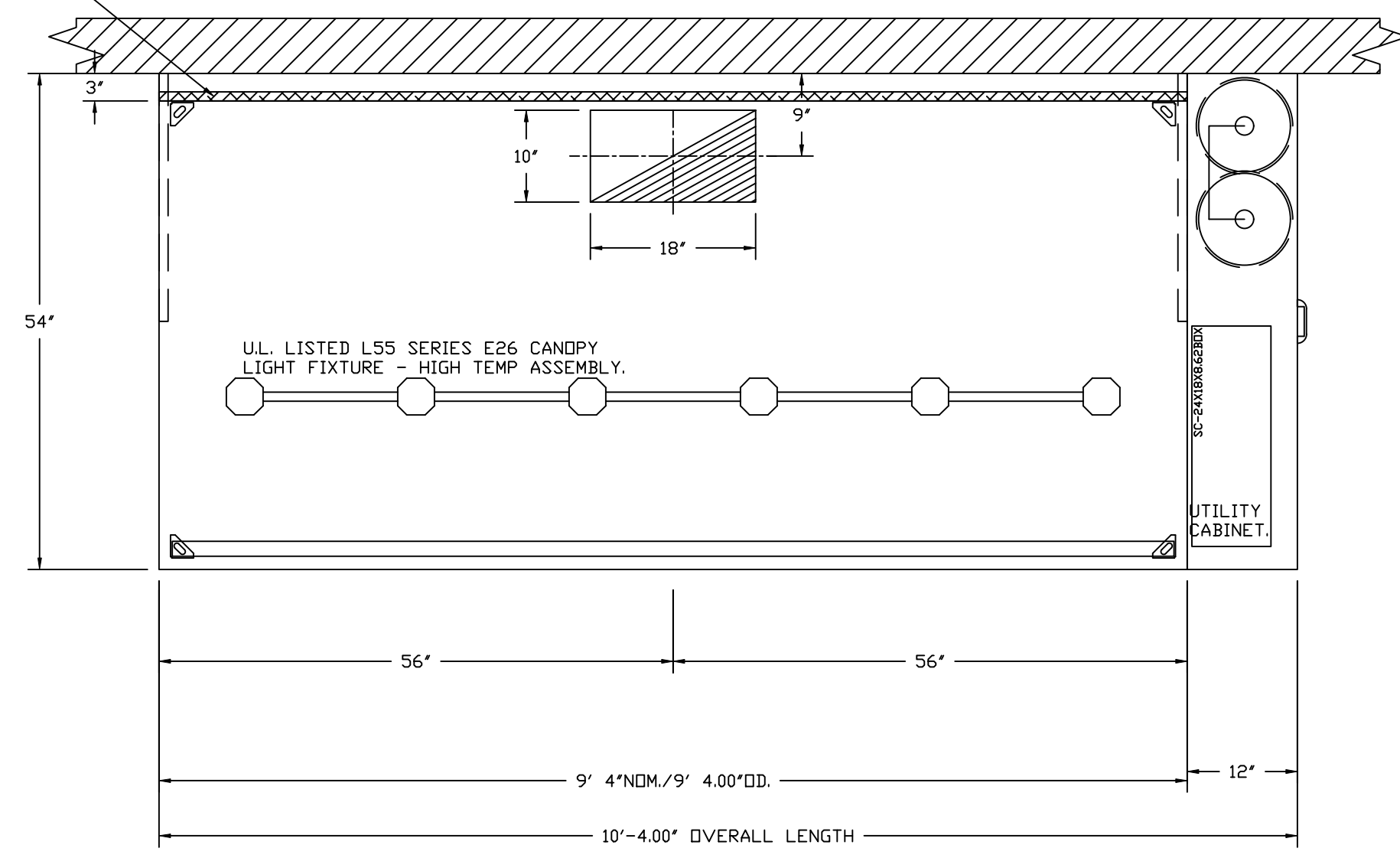
**HOOD INFORMATION**

| HOOD NO | TAG | FILTER(S)             |     |        |        | LIGHT(S)               |     |                |            | UTILITY CABINET(S) |             |         |         | FIRE SYSTEM | HOOD HANGING WEIGHT |                    |                   |
|---------|-----|-----------------------|-----|--------|--------|------------------------|-----|----------------|------------|--------------------|-------------|---------|---------|-------------|---------------------|--------------------|-------------------|
|         |     | TYPE                  | QTY | HEIGHT | LENGTH | EFFICIENCY @ 7 MICRONS | QTY | TYPE           | WIRE GUARD | LOCATION           | SIZE        | TYPE    | SIZE    |             |                     | ELECTRICAL MODEL # | SWITCHES QUANTITY |
| 1       |     | CAPTRATE SOLID FILTER | 7   | 16"    | 16"    | 85% SEE FILTER SPEC    | 6   | L55 SERIES E26 | NO         | RIGHT              | 12"x54"x24" | TANK FS | 4.0/4.0 | SC-110110MA | 1 LIGHT<br>1 FAN    | YES                | 880 LBS           |

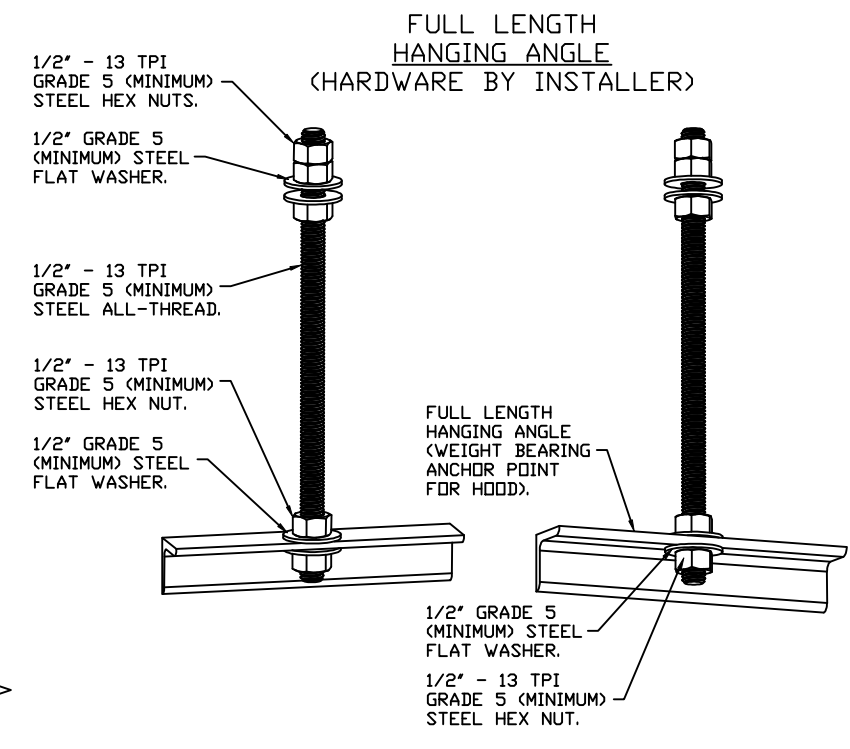
**HOOD OPTIONS**

| HOOD NO | TAG | OPTION  |
|---------|-----|---|
| 1       |     | FIELD WRAPPER 10.00" HIGH FRONT, LEFT, RIGHT.<br>INSULATION FOR BACK OF HOOD.<br>RISER SENSOR INSTALL 6IN PLEN.<br>RIGHT VERTICAL END PANEL 27" TOP WIDTH, 21" BOTTOM WIDTH, 80" HIGH INSULATED 430 SS.<br>LEFT VERTICAL END PANEL 27" TOP WIDTH, 21" BOTTOM WIDTH, 80" HIGH INSULATED 430 SS.<br>FULL DIMENSION HANGING BRACKET - FRONT. |

1" LAYER OF INSULATION FACTORY INSTALLED IN INTERNAL BACK STANDOFF. MEETS 0 INCH REQUIREMENTS FOR CLEARANCE TO COMBUSTIBLE SURFACES.



PLAN VIEW - HOOD #1  
9' 4.00" LONG 5424ND-2



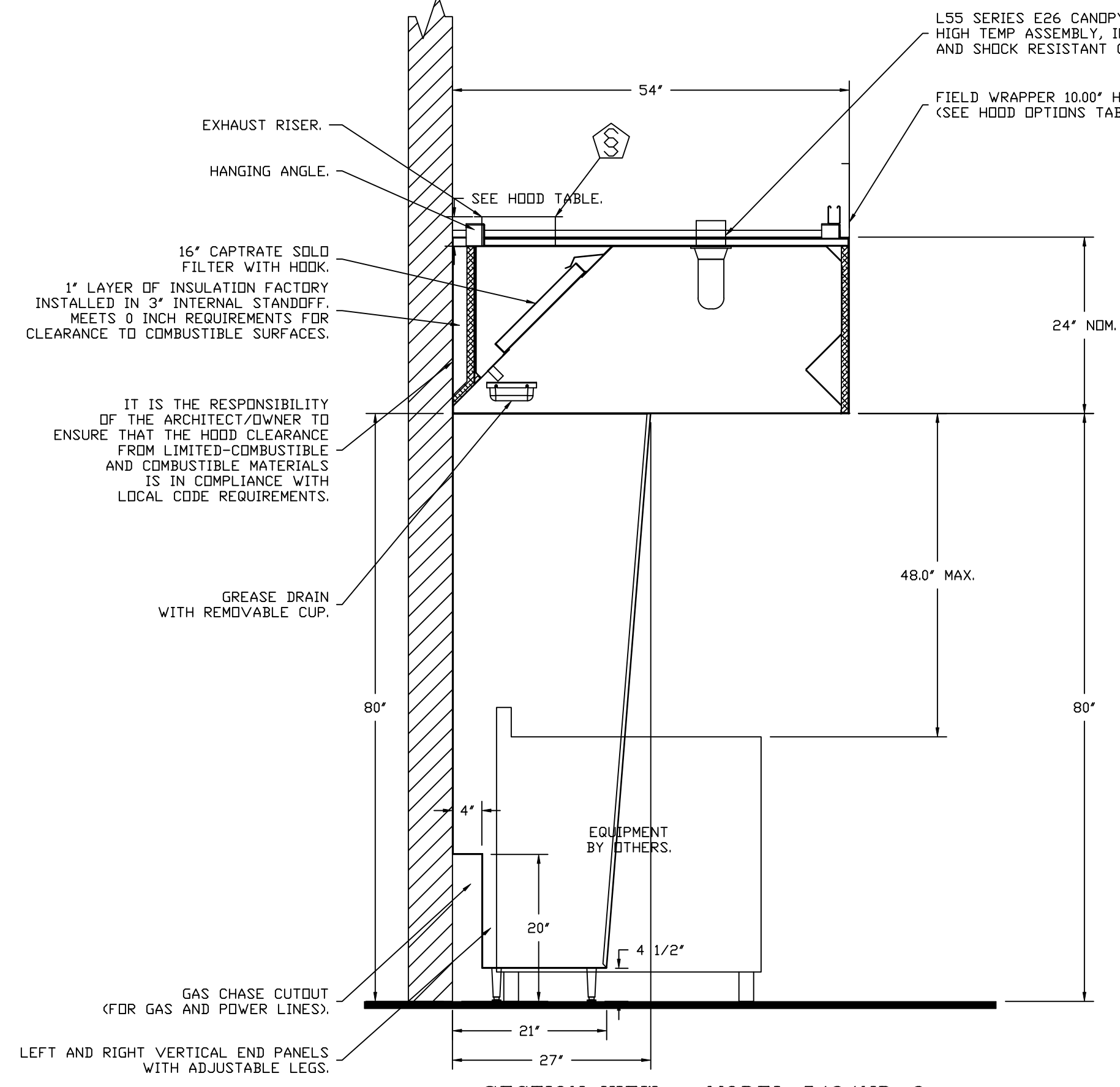
**ASSEMBLY INSTRUCTIONS**

HANGING ANGLE MUST BE SUPPORTED WITH 1/2" - 13 TPI GRADE 5 (MINIMUM) ALL-THREAD. SANDWICH HANGING ANGLES AND CEILING ANCHOR POINTS WITH 1/2" GRADE 5 (MINIMUM) STEEL FLAT WASHERS AND 1/2" - 13 TPI GRADE 5 (MINIMUM) HEX NUTS AS SHOWN. MUST USE DOUBLED HEX NUT CONFIGURATION ABOVE CEILING ANCHORS. SINGLE HEX NUT BENEATH HANGING ANGLE IS ACCEPTABLE FOR FULL LENGTH HANGING ANGLES. MAINTAIN 1/4" OF EXPOSED THREADS BENEATH BOTTOM HEX NUT. TORQUE ALL HEX NUTS TO 57 FT-LBS.

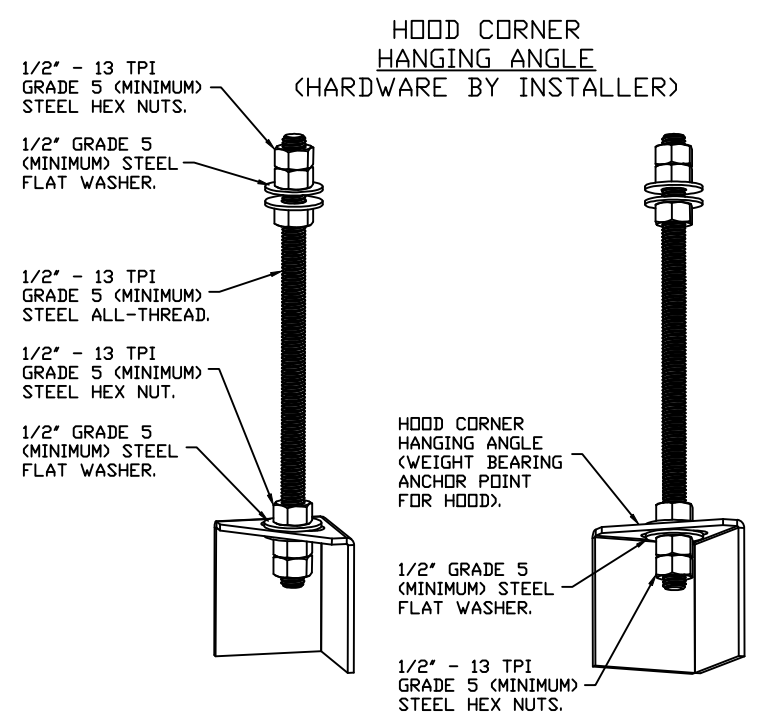
**CLEARANCE TO COMBUSTIBLES**

| HOODS # | SURFACE | *CLEARANCE |
|---------|---------|------------|
| 1       | TOP     | 18"        |
|         | FRONT   | 0"         |
|         | BACK    | 0"         |
|         | LEFT    | 18"        |
|         | RIGHT   | 0"         |

- \*0" CLEARANCE TO COMBUSTIBLES CONFORMS TO UL710 STANDARD.
- HOOD MOUNTED UTILITY CABINETS REQUIRE 36" SERVICE CLEARANCE.



SECTION VIEW - MODEL 5424ND-2  
HOOD - #1



**ASSEMBLY INSTRUCTIONS**

HANGING ANGLE MUST BE SUPPORTED WITH 1/2" - 13 TPI GRADE 5 (MINIMUM) ALL-THREAD. SANDWICH HANGING ANGLES AND CEILING ANCHOR POINTS WITH 1/2" GRADE 5 (MINIMUM) STEEL FLAT WASHERS AND 1/2" - 13 TPI GRADE 5 (MINIMUM) HEX NUTS AS SHOWN. MUST USE DOUBLED HEX NUT CONFIGURATION BENEATH HOOD HANGING ANGLES AND ABOVE CEILING ANCHORS. MAINTAIN 1/4" OF EXPOSED THREADS BENEATH BOTTOM HEX NUT. TORQUE ALL HEX NUTS TO 57 FT-LBS.

**REVISIONS**

| DESCRIPTION | DATE |
|-------------|------|
|             |      |
|             |      |
|             |      |
|             |      |

**CAPTIVEAIRE**  
 Highwoods Group  
 4641 Paragon Park Rd., Raleigh, NC, 27616 PHONE: (919) 875 - 0420 FAX: 9198750577 EMAIL: reg40@captiveaire.com  
 www.captiveaire.com

CHIPOTLE DOVE VALLEY #5344  
 PHOENIX, AZ, 85085

|                     |
|---------------------|
| DATE: 1/9/2025      |
| DWG.#: 7264184      |
| DRAWN BY: JMB-40    |
| SCALE: 3/4" = 1'-0" |
| MASTER DRAWING      |

SHEET NO.  
1

**FIRE SYSTEM INFORMATION - JOB#7264184**

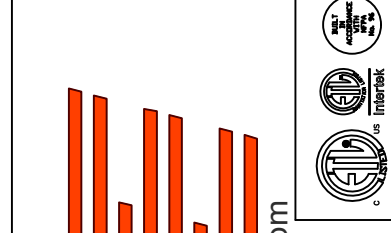
| FIRE SYSTEM NO | TAG | TYPE    | SIZE    | MAX FP | DESIGN FP | INSTALLATION       |                  |
|----------------|-----|---------|---------|--------|-----------|--------------------|------------------|
|                |     |         |         |        |           | SYSTEM             | LOCATION ON HOOD |
| 1              |     | TANK FS | 4.0/4.0 | 40     | 28        | FIRE CABINET RIGHT | RIGHT, HOOD 1    |

**FIRE SYSTEM PARTS LIST KEY**

| FIRE SYSTEM NO | TAG | KEY NUMBER - PART DESCRIPTION   | QTY BY FACTORY | QTY BY DIST |
|----------------|-----|---|----------------|-------------|
|                |     | 0 - 0 - TANK FIRE SUPPRESSION POST-DISCHARGE PROCEDURE UTILITY CABINET LABEL SHEET.   | 1              | 0           |
|                |     | 0 - 0 - TANK FIRE SUPPRESSION MAINTENANCE GUIDE UTILITY CABINET LABEL SHEET.  | 1              | 0           |
|                |     | 0 - 0 - 12-F28021-32144-DT-360 DUCT FIRE THERMOSTAT WITH 12 FOOT WIRE LEADS. ND, CLOSE ON TEMP RISE AT 360°F. (A0034310).                                 | 1              | 0           |
|                |     | 0 - 0 - 32-00002 QUIK SEAL - 1/2" (UL).   | 1              | 0           |
|                |     | 0 - 0 - 4429K153 1/2" MALE NPT TO 1/2" FEMALE NPT ELBOW, BRASS.   | 2              | 0           |
|                |     | 0 - 0 - 4429K422 1/2" X 1/4" BRASS REDUCING BUSHING.  | 1              | 0           |
|                |     | 0 - 0 - 79525 1/2" 90 PRO-PRESS ELBOW WITH 1/2" NPT FEMALE CONNECTION, VIEGA.   | 1              | 0           |
|                |     | 0 - 0 - 79580 1/2" X 1/2" PRO-PRESS TEE X 1/2" NPT FEMALE CONNECTION, VIEGA.  | 2              | 0           |
|                |     | 0 - 0 - 87-120042-001 SECONDARY ACTUATOR VALVE (SVA) - SINGLE ACTUATOR, REQUIRES PRIMARY RELEASE ACTUATOR, TANK FIRE SUPPRESSION.                         | 1              | 0           |
|                |     | 0 - 0 - 87-120045-001 HOSE, SECONDARY ACTUATOR HOSE, 7.5' BRAIDED STAINLESS STEEL, TANK FIRE SUPPRESSION.   | 1              | 0           |
|                |     | 0 - 0 - 87-300001-001 TANK - PRESSURIZED TANK USED FOR TANK FIRE SUPPRESSION.   | 2              | 0           |
|                |     | 0 - 0 - 87-300030-001 PRIMARY ACTUATOR KIT (PAK) - ACTUATOR AND RELEASE SOLENOID ASSEMBLY, ONE NEEDED PER FIRE SYSTEM, SUPERVISED, TANK FIRE SUPPRESSION. | 1              | 0           |
|                |     | 0 - 0 - 87-300033-001 DIN CONNECTOR, CANFIELD PART #5J560-201-EU0A, TANK FIRE SUPPRESSION, SUBMINATURE SOLENOID CONNECTION (CED VENDDR 30377).            | 1              | 0           |
|                |     | 0 - 0 - 87-300152-001 HARDWARE, SVA BOLTS, TANK FIRE SUPPRESSION.   | 8              | 0           |
|                |     | 0 - 0 - 9055455PC PRO PRESS 1/2 PRESS X PRESS 90 ELBOW LD.  | 6              | 0           |
|                |     | 0 - 0 - 9097200PC PRO PRESS PC611 1/2 PRESS TEE LD.   | 5              | 0           |
|                |     | 0 - 0 - 98694A115 HARDWARE, DATANKLOCK LOCKING BRACKET SQUARE NUTS 5/16" ZINC, TANK FIRE SUPPRESSION.   | 4              | 0           |
|                |     | 0 - 0 - A0034332 JUNCTION BOX FOR MANUAL PULL STATION. 1.5' DEEP BACK BOX, RED COLOR.   | 1              | 0           |
|                |     | 0 - 0 - A31484 1/4" NPT SCHRADER VALVE AND CAP, JB INDUSTRIES. 1/4" FLARE X 1/4" MPT HALF UNION. USED ON TANK SERVICE PORT.                               | 1              | 0           |
|                |     | 0 - 0 - B1145 3/8" BLACK IRON 90 ELL.   | 2              | 0           |
|                |     | 0 - 0 - DATANKLOCK DISCHARGE ADAPTER TANK LOCKING PLATE FOR FIRE SYSTEM TANK INSTALLATION IN UTILITY CABINETS, TANK FIRE SUPPRESSION.                     | 2              | 0           |
|                |     | 0 - 0 - TANK STRAP TANK STRAP - USED FOR TANK FIRE SUPPRESSION.   | 6              | 0           |
|                |     | 0 - 0 - TFS-UCTANKBRACKET TANK BRACKET FOR FIRE SYSTEM TANK INSTALLATION IN UTILITY CABINETS, TANK FIRE SUPPRESSION.                                      | 2              | 0           |
|                |     | 0 - 0 - WK-283952-000 DISCHARGE ADAPTER, TANK FIRE SUPPRESSION.   | 2              | 0           |
|                |     | 16 - 16 - 79210 1/2" X 3/8" NPT MALE ADAPTER, VIEGA.  | 6              | 0           |
|                |     | 16 - 16 - DL-F NOZZLE - TANK PROTECTION APPLIANCE COVERAGE NOZZLE (INCLUDES METAL BLOW OFF CAP, LANYARD, USED WITH CHROME-PLATED PIPE).                   | 6              | 0           |
|                |     | 26 - 26 - QSA-3/8 QUIK SEAL - 3/8" (UL).  | 6              | 0           |
|                |     | 34 - 34 - A0034331 24VDC SINGLE ACTION MANUAL ACTUATION DEVICE (PUSH/PULL STATION) WITH PROTECTIVE COVER, ONE (1) NORMALLY OPEN CONTACT. RED COLOR.       | 1              | 0           |

**REVISIONS**

| DESCRIPTION | DATE: |
|-------------|-------|
|             |       |
|             |       |
|             |       |
|             |       |



**CAPTIVE**

Highwoods Group

www.captivefire.com  
4641 Paragon Park Rd., Raleigh, NC 27616 PHONE: (919) 875-0420 FAX: 9198750577 EMAIL: reg40@captivefire.com

CHIPOTLE DOVE VALLEY #5344  
PHOENIX, AZ, 85085

**DATE:** 1/9/2025

**DWG.#:**  
7264184

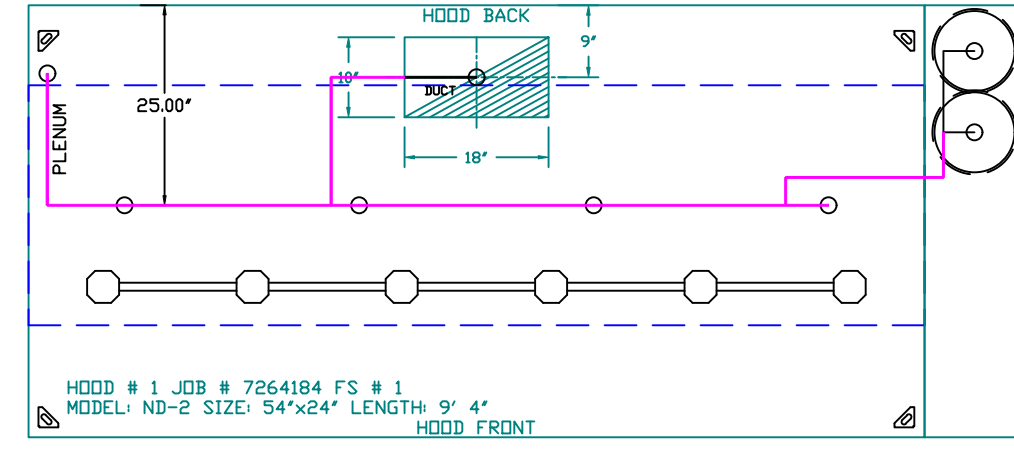
**DRAWN BY:** JMB-40

**SCALE:**  
3/4" = 1'-0"

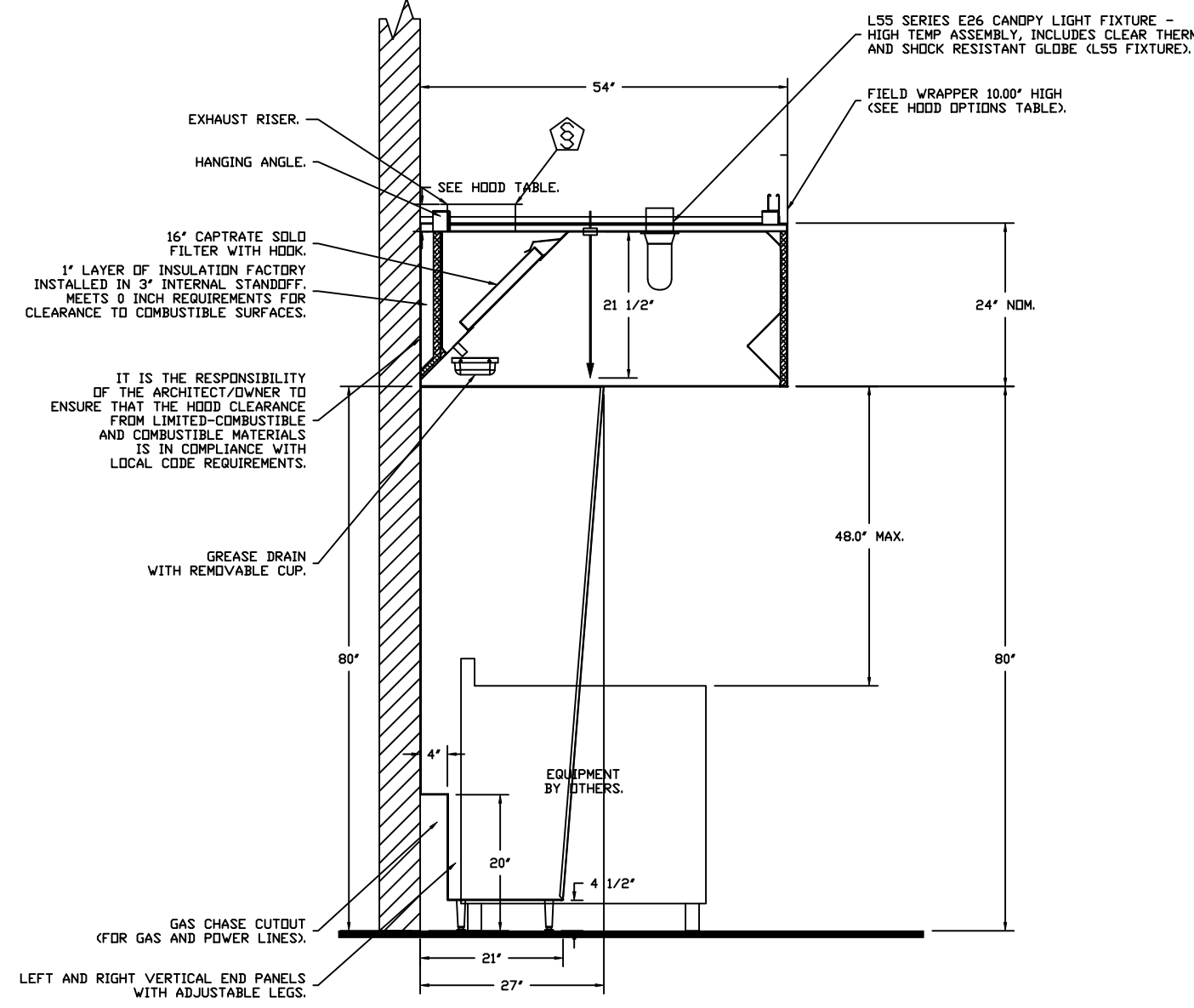
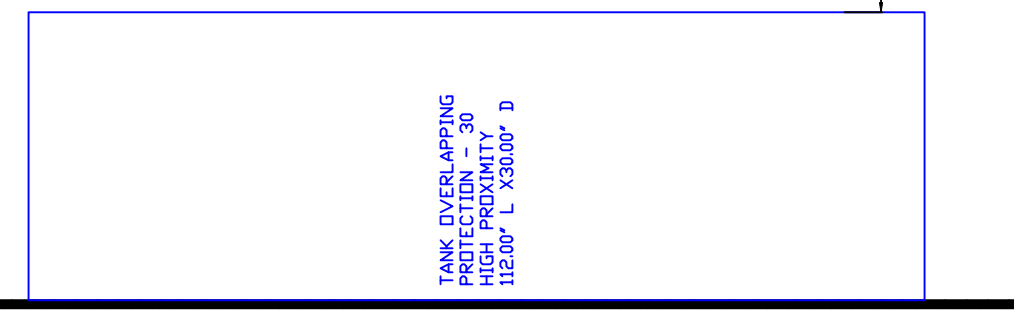
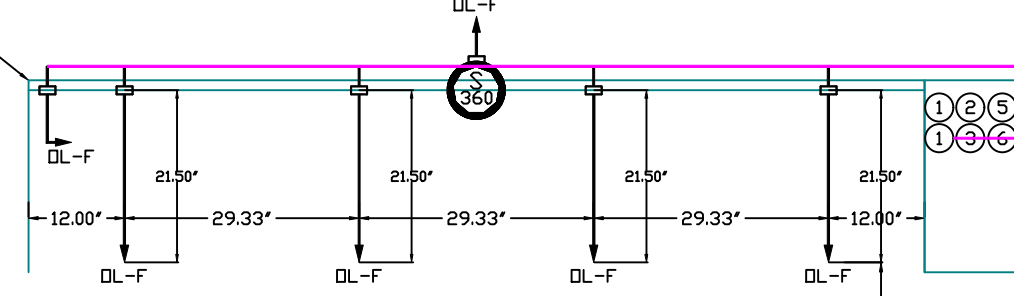
**MASTER DRAWING**

**SHEET NO.**  
2

SYSTEM REQUIRES A MINIMUM OF 7 FT OF EQUIVALENT PIPE LENGTH BETWEEN TANK AND NEAREST APPLIANCE NOZZLE FOR MOST APPLIANCES. EACH 90 DEGREE ELBOW ADDS 1.3 FT OF EQUIVALENT LENGTH. SEE MANUAL FOR DETAILS.



FACTORY PIPING EXTENDS A MAXIMUM OF 6' ABOVE THE TOP OF THE HOOD.



SECTION VIEW - MODEL 5424ND-2 HOOD - #1

- NOTES
- FIELD PIPE DROPS AS SHOWN. PIPING, ELBOWS, TEES, AND NOZZLES SUPPLIED BY CAS.
  - FIELD INSTALLED DROP; FACTORY WILL PROVIDE QTY 2 60IN LONG PIECES OF CHROME PLATED PIPING SHIPPED LOOSE TO BE FIELD-INSTALLED.
  - SHIP LOOSE DROP; FACTORY WILL PROVIDE THE EXACT CHROME PIPE LENGTH NEEDED SHIPPED LOOSE TO BE FIELD-INSTALLED.
  - RELOCATE NOZZLES IF FLOW PATTERN IS BLOCKED BY SHELVEING, SALAMANDERS, ETC.
  - OVERLAPPING COVERAGE SHALL NOT BE USED ON ANY APPLIANCE WITH AN OBSTRUCTION.
  - IF APPLICABLE, EXTENDED PRE-PIPED DROPS ARE SHIPPED LOOSE.
  - FACTORY PIPING EXTENDS A MAXIMUM OF 6' ABOVE THE TOP OF THE HOOD.

- APPLIANCE DIMENSIONS LISTED REPRESENT THE COOKING SURFACE SIZE, NOT THE OVERALL APPLIANCE SIZE.
- THIS FIRE SYSTEM COMPLIES WITH U.L. 300 REQUIREMENTS.

- DL-F NOZZLE PART NUMBER REPLACES 3070-3/8H-10-SS
- JOB #: 7264184.
- JOB NAME: CHIPOTLE DOVE VALLEY #5344.

SYSTEM SIZE: TANK-SP-2 DESIGN FP: 28, MAXIMUM FP: 40.  
 HOOD # 1 9' 4.00' LONG x 54' WIDE x 24' HIGH.  
 RISER # 1 SIZE: 10" x 18".  
 HOOD # 1 METAL BLOW-OFF CAPS INCLUDED.

- HEAVY-DUTY APPLIANCES (RATED 600°F) WILL REQUIRE AN ADDITIONAL DOWNSTREAM FIRESTAT IN THE EVENT THAT THE DUCTWORK CONTAINS ANY HORIZONTAL RUNS OVER 25 FT IN LENGTH.
- MEDIUM TO LIGHT-DUTY APPLIANCES (RATED 450°F) WILL NOT REQUIRE ANY ADDITIONAL DOWNSTREAM DETECTION.

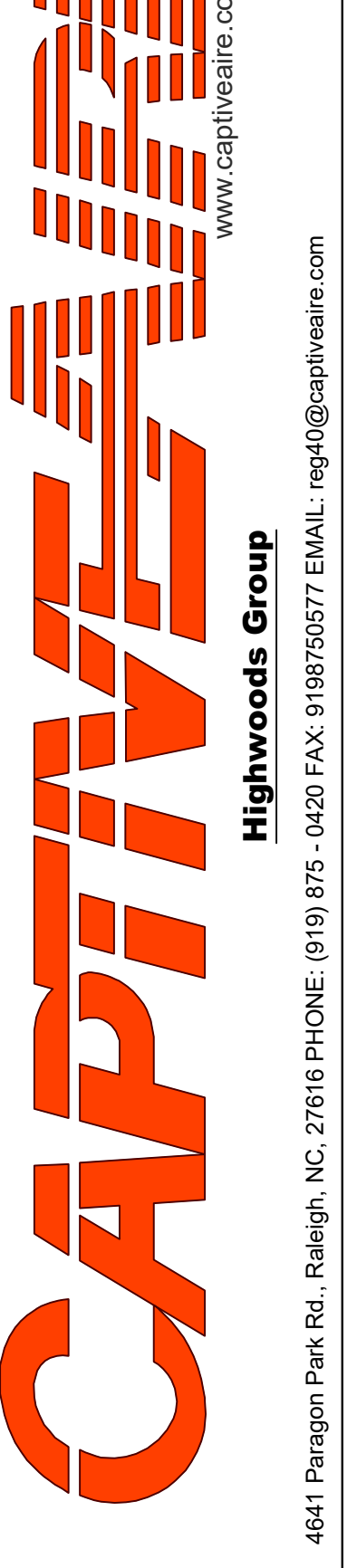
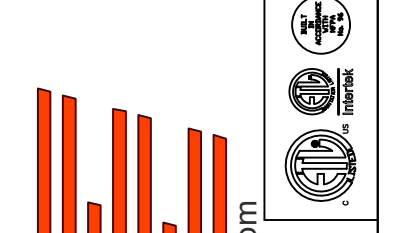
| AGENT DISTRIBUTION PIPING LIMITATIONS       |                      |
|---|----------------------|
| PIPE SECTION                                | MAX PIPE LENGTH (FT) |
| MAX SUPPLY LINE TO FIRST OVERLAPPING NOZZLE | 42                   |
| OVERLAPPING NOZZLE APPLIANCE BRANCH         | 10                   |
| DEDICATED NOZZLE APPLIANCE BRANCH           | 10                   |

- LEGEND - FIRE CABINET TANK SYSTEM
- 4 GALLON TANK.
  - PRIMARY ACTUATOR RELEASE.
  - SECONDARY ACTUATOR RELEASE.
  - PRESSURE SUPERVISION SWITCH.
  - PRIMARY HOSE ASSEMBLY.
  - SECONDARY HOSE ASSEMBLY.
  - REMOTE MANUAL ACTUATION DEVICE.

INCLUDES: FIELD INSTALLATION AND HOOKUP DURING NORMAL BUSINESS HOURS BY CERTIFIED INSTALLERS ONLY IN THE LOCATION NOTED ABOVE. TWO SITE VISITS ONLY (ONE VISIT TO SET PULL STATION & SYSTEM HOOKUP AND ONE VISIT FOR ONE TEST). ADDITIONAL VISITS WILL RESULT IN ADDITIONAL CHARGES. ONE MECHANICAL OR ELECTRICAL GAS VALVE PER SYSTEM AT A MAXIMUM SIZE OF 2". PERMIT AND SYSTEM TEST.  
 EXCLUDES: UNION LABOR & PREVAILING WAGE (LABOR & WAGES WILL BE ADDED IF APPLICABLE), GAS VALVE INSTALLATION, ELECTRICAL HOOKUP AND CONNECTIONS, HANGING OF FIRE CABINET, SHUNT TRIP, HANDHELD EXTINGUISHER(S), ON-SITE RE-PIPING DUE TO EQUIPMENT LAYOUT CHANGES.

REVISIONS

| DESCRIPTION | DATE: |
|-------------|-------|
|             |       |
|             |       |
|             |       |
|             |       |



CHIPOTLE DOVE VALLEY #5344  
 PHOENIX, AZ, 85085

DATE: 1/9/2025

DWG.#: 7264184

DRAWN BY: JMB-40

SCALE: 1/2" = 1'-0"

MASTER DRAWING

SHEET NO. 3

**EXHAUST FAN INFORMATION -- JOB#7264184**

| FAN UNIT NO | TAG  | QTY | FAN UNIT MODEL # | MANUFACTURER | CFM  | ESP   | RPM  | MOTOR ENCL     | HP    | BHP    | PHASE | VOLT | FLA  | DISCHARGE VELOCITY | WEIGHT (LBS) | SDNES |
|-------------|------|-----|------------------|--------------|------|-------|------|----------------|-------|--------|-------|------|------|--------------------|--------------|-------|
| 1           | EF-1 | 1   | DUB5HFA          | CAPTIVEAIRE  | 1900 | 1.200 | 1500 | TEAD-ECM       | 1.000 | 0.5780 | 1     | 115  | 11.6 | 601 FPM            | 94           | 14.8  |
| 2           | EF-2 | 1   | DR12HFA          | CAPTIVEAIRE  | 150  | 0.500 | 1210 | TEAD-ECM       | 0.250 | 0.0740 | 1     | 115  | 2.9  |                    | 50           | 5.4   |
| 3           | EF-3 | 1   | DFA-100-CA       | CAPTIVEAIRE  | 50   | 0.600 | 2273 | GENERALPURPOSE | 0.150 | 0.0640 | 1     | 115  | 1.0  |                    | 9            | N/A   |

**FAN OPTIONS**

| FAN UNIT NO | TAG  | QTY | DESCRIPTION  |
|-------------|------|-----|--|
| 1           | EF-1 | 1   | GREASE BOX   |
|             |      | 1   | REMOVE HINGE KIT LABEL FROM THE FAN BASE   |
|             |      | 1   | ECM WIRING PACKAGE - PWM SIGNAL FROM ECPM03 PREWIRE (TELCO MOTOR), CCW ROTATION                      |
|             |      | 1   | 2 YEAR PARTS WARRANTY  |
| 2           | EF-2 | 1   | ECM WIRING PACKAGE - EXHAUST - MANUAL OR 0-10VDC REFERENCE SPEED CONTROL -MSC- (TELCO), CCW ROTATION |
|             |      | 1   | I 12-BDD DAMPER  |
|             |      | 1   | 2 YEAR PARTS WARRANTY  |
| 3           | EF-3 | 1   | FAN CONTROL - 3 AMP WHITE SPEED CONTROL FOR CFA CEILING FAN  |
|             |      | 1   | 2 YEAR PARTS WARRANTY  |

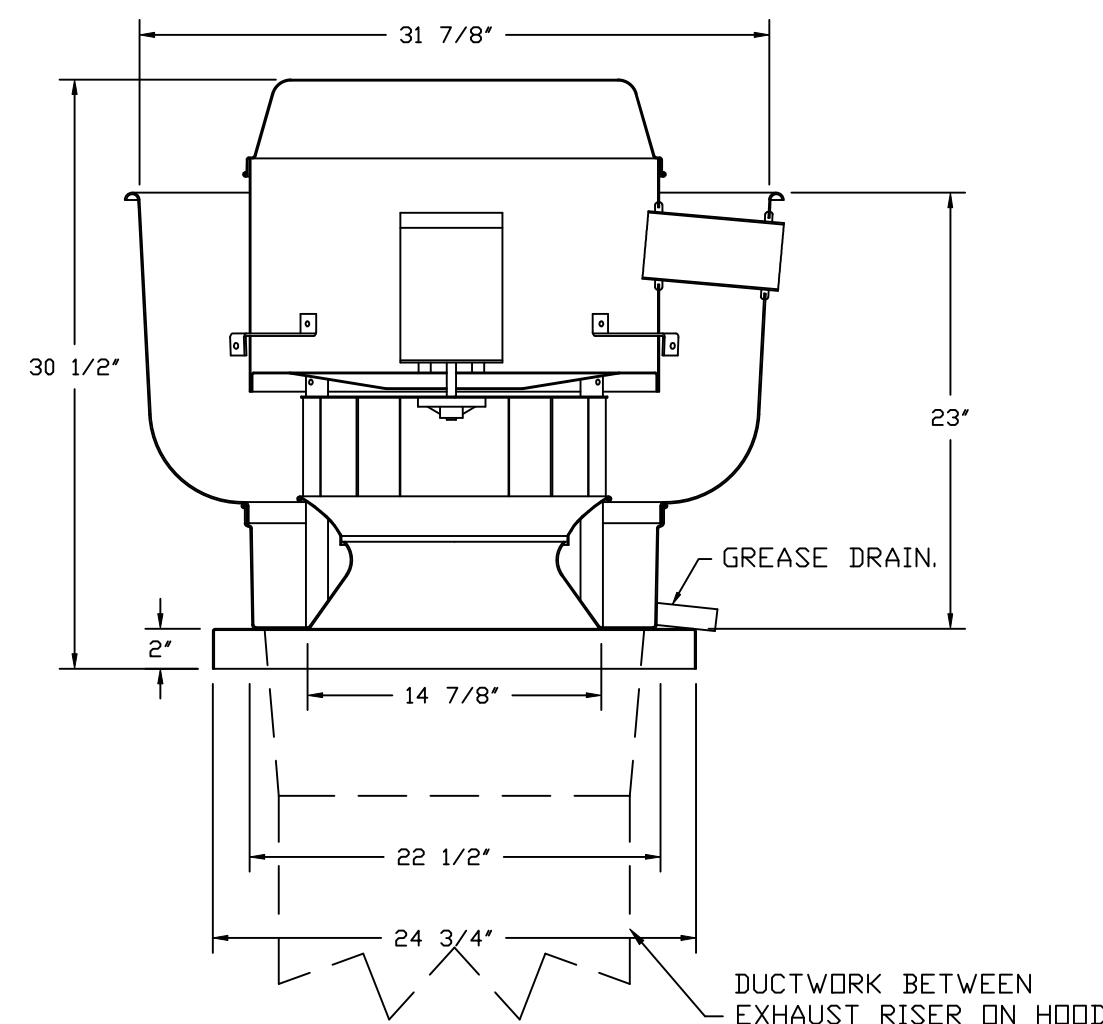
**FAN ACCESSORIES**

| FAN UNIT NO | TAG  | EXHAUST    |                |            |                | SUPPLY         |                  |            |
|-------------|------|------------|----------------|------------|----------------|----------------|------------------|------------|
|             |      | GREASE CUP | GRAVITY DAMPER | WALL MOUNT | SIDE DISCHARGE | GRAVITY DAMPER | MOTORIZED DAMPER | WALL MOUNT |
| 1           | EF-1 | YES        |                |            |                |                |                  |            |
| 2           | EF-2 |            | YES            |            |                |                |                  |            |
| 3           | EF-3 |            |                |            |                |                |                  |            |

**CURB ASSEMBLIES**

| NO | ON FAN | TAG  | WEIGHT | ITEM | SIZE                                   |
|----|--------|------|--------|------|--|
| 1  | # 1    | EF-1 | 32 LBS | CURB | 23.000"W X 23.000"L X 20.000"H VENTED. |
| 2  | # 2    | EF-2 | 31 LBS | CURB | 17.500"W X 17.500"L X 26.000"H.        |

**FAN #1 DUB5HFA - EXHAUST FAN (EF-1)**



**FEATURES:**

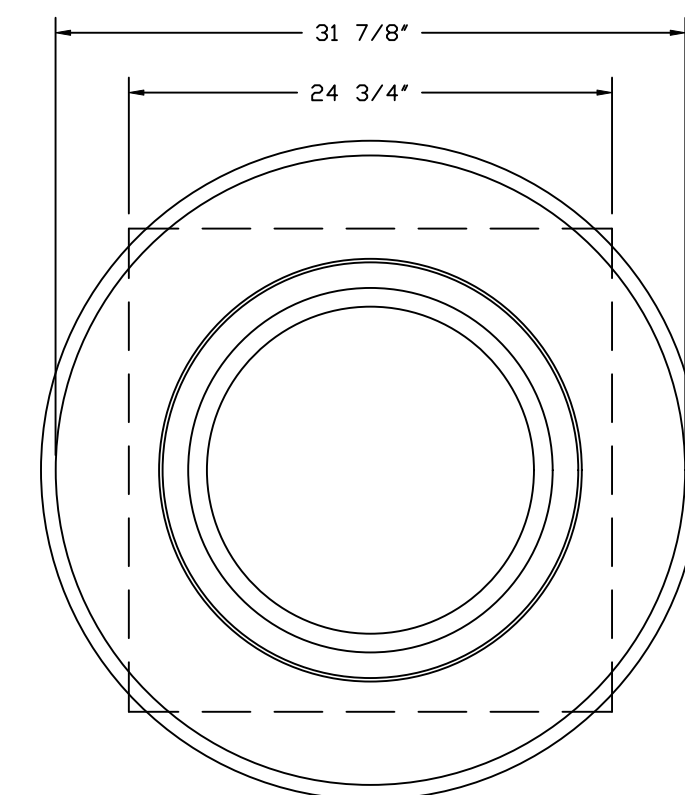
- DIRECT DRIVE CONSTRUCTION (NO BELTS/PULLEYS).
- ROOF MOUNTED FANS.
- RESTAURANT MODEL.
- UL705 AND UL762 AND ULC-S645
- VARIABLE SPEED CONTROL.
- INTERNAL WIRING.
- THERMAL OVERLOAD PROTECTION (SINGLE PHASE).
- HIGH HEAT OPERATION 300°F (149°C).
- GREASE CLASSIFICATION TESTING.
- NEMA 3R SAFETY DISCONNECT SWITCH.

**NORMAL TEMPERATURE TEST**  
EXHAUST FAN MUST OPERATE CONTINUOUSLY WHILE EXHAUSTING AIR AT 300°F (149°C) UNTIL ALL FAN PARTS HAVE REACHED THERMAL EQUILIBRIUM, AND WITHOUT ANY DETERIORATING EFFECTS TO THE FAN WHICH WOULD CAUSE UNSAFE OPERATION.

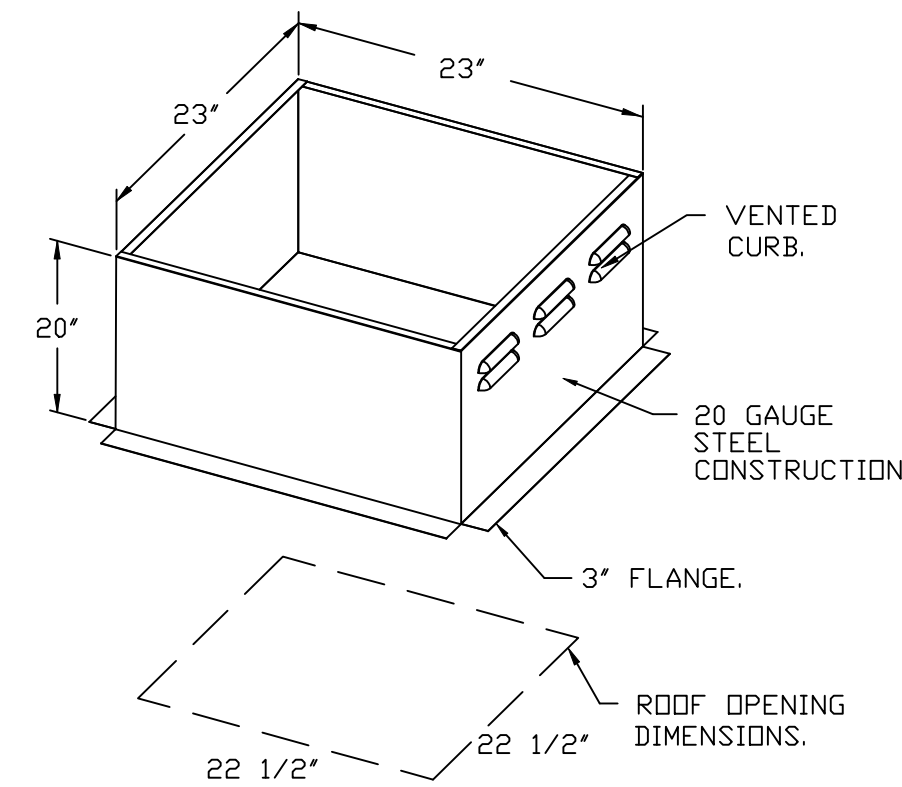
**ABNORMAL FLARE-UP TEST**  
EXHAUST FAN MUST OPERATE CONTINUOUSLY WHILE EXHAUSTING BURNING GREASE VAPORS AT 600°F (316°C) FOR A PERIOD OF 15 MINUTES WITHOUT THE FAN BECOMING DAMAGED TO ANY EXTENT THAT COULD CAUSE AN UNSAFE CONDITION.

**OPTIONS**

- GREASE BOX.
- REMOVE HINGE KIT LABEL FROM THE FAN BASE.
- ECM WIRING PACKAGE - PWM SIGNAL FROM ECPM03 PREWIRE (TELCO MOTOR), CCW ROTATION.
- 2 YEAR PARTS WARRANTY.



**TOP VIEW**



**REVISIONS**

| REVISIONS | DESCRIPTION | DATE: |
|-----------|-------------|-------|
| Δ         |             |       |
| Δ         |             |       |
| Δ         |             |       |
| Δ         |             |       |

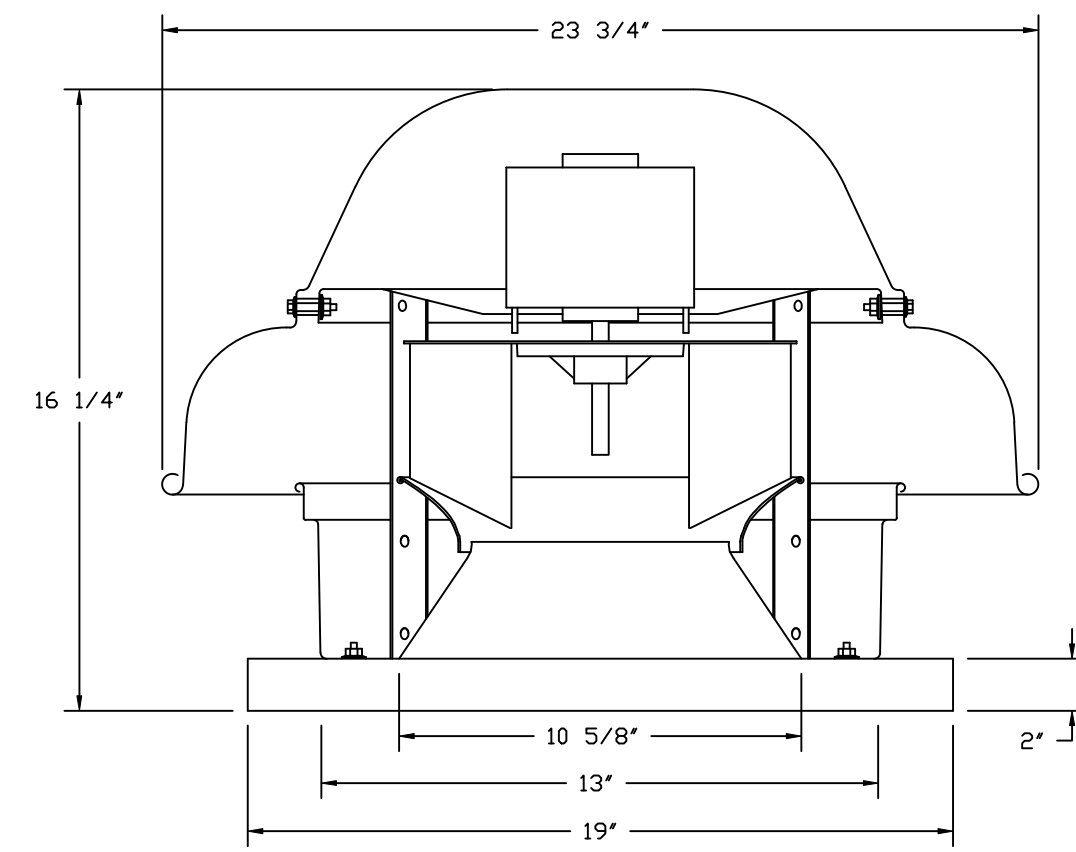
**CAPTIVE AIR**  
Highwoods Group  
4641 Paragon Park Rd., Raleigh, NC, 27616 PHONE: (919) 875-0420 FAX: 9198750577 EMAIL: egr40@captiveaire.com  
www.captiveaire.com

CHIPOTLE DOVE VALLEY #5344  
PHOENIX, AZ, 85085

**DATE:** 1/9/2025  
**DWG.#:** 7264184  
**DRAWN BY:** JMB-40  
**SCALE:** 3/4" = 1'-0"  
**MASTER DRAWING**

**SHEET NO.**  
4

FAN #2\_DR12HFA - EXHAUST FAN (EF-2)

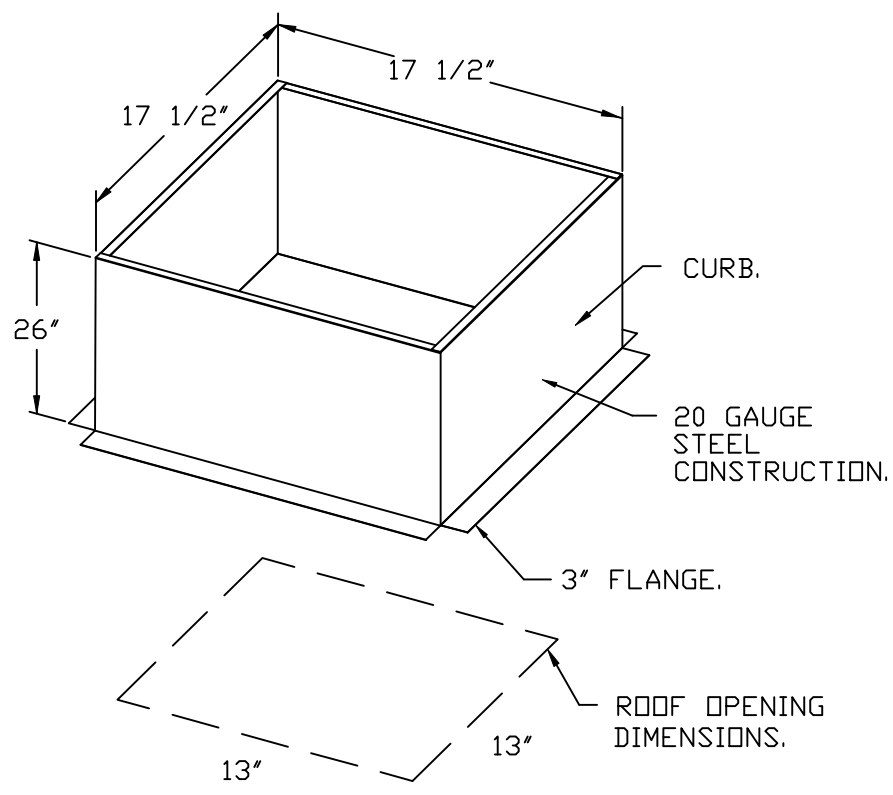


**FEATURES:**

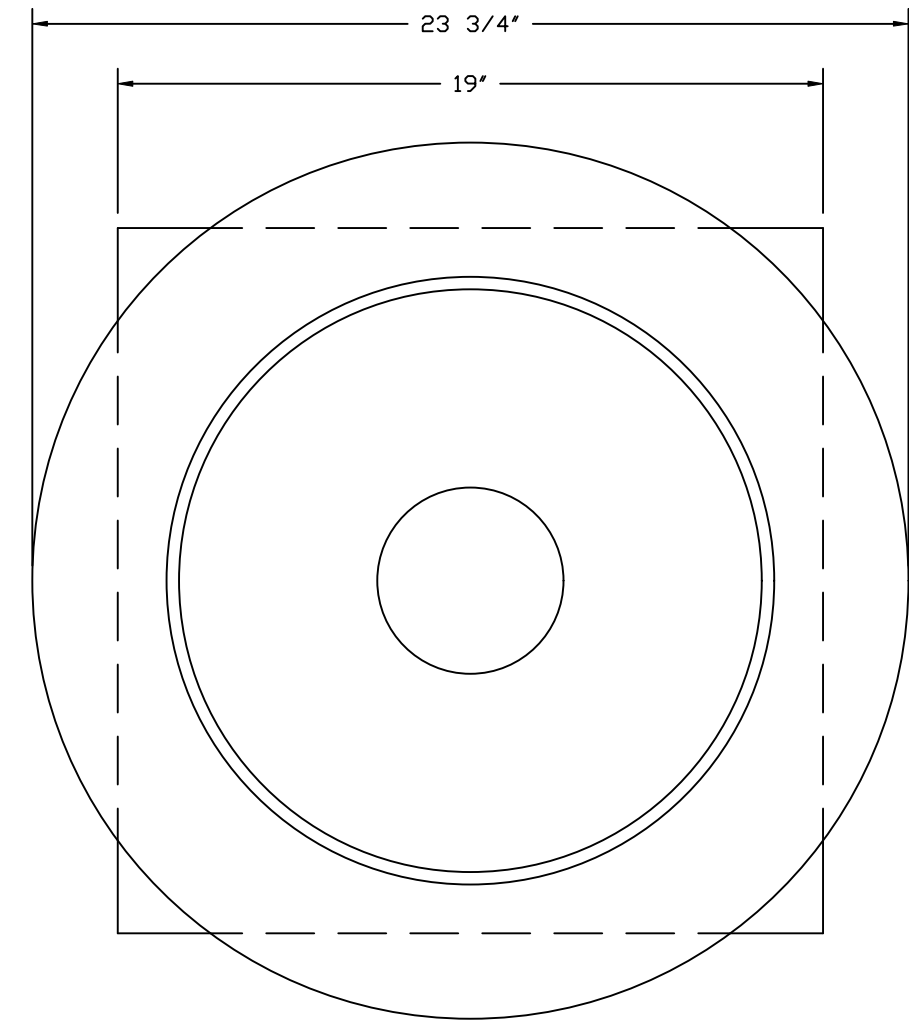
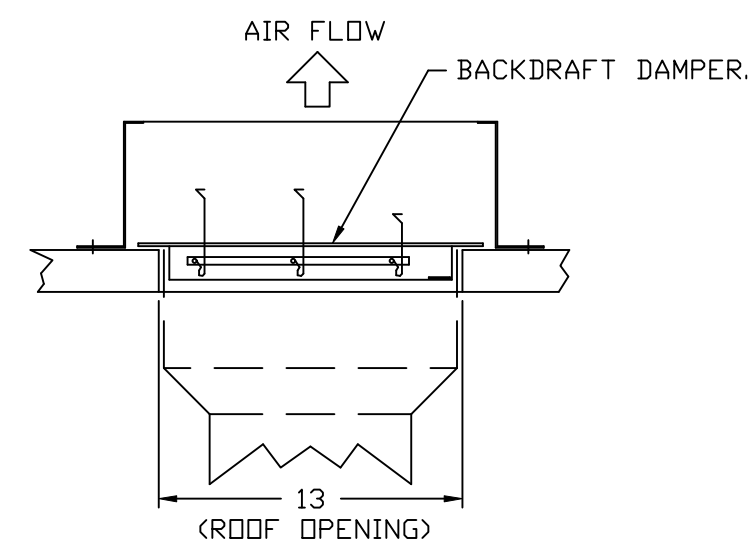
- DIRECT DRIVE CONSTRUCTION (NO BELTS/PULLEYS).
- ROOF MOUNTED FANS.
- UL705.
- SAFETY DISCONNECT.
- STANDARD BIRD SCREEN.
- SPEED CONTROL.
- THERMAL OVERLOAD PROTECTION (SINGLE PHASE).

**OPTIONS:**

- ECM WIRING PACKAGE - EXHAUST - MANUAL OR 0-10VDC REFERENCE SPEED CONTROL - MSC - (TELCD), CCW ROTATION.
- 1 12-30D DAMPER.
- 2 YEAR PARTS WARRANTY.

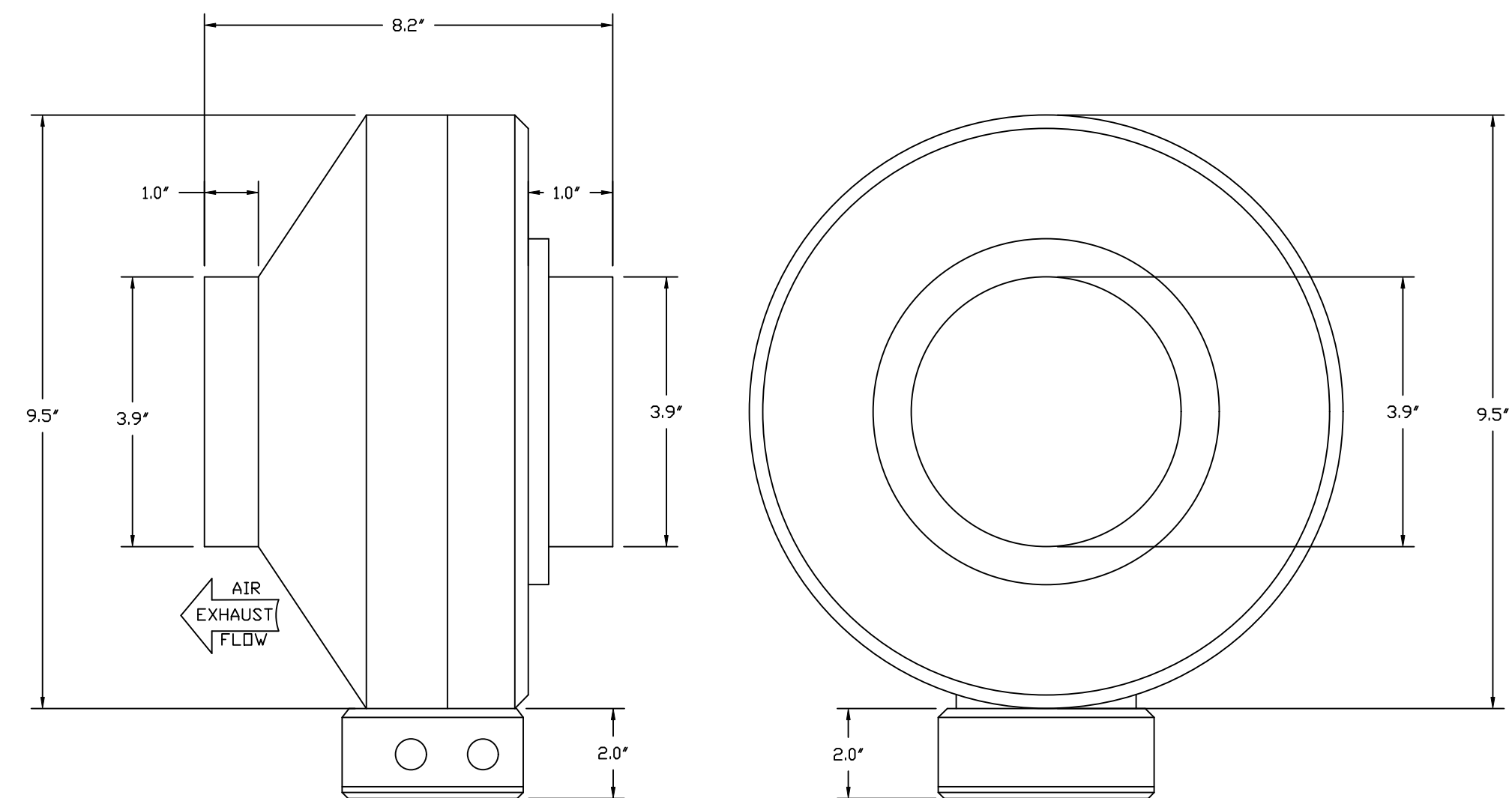


**BACKDRAFT DAMPER INSTALLATION**



**TOP VIEW**

FAN #3\_DFA-100-CA - EXHAUST FAN (EF-3)



**FEATURES:**

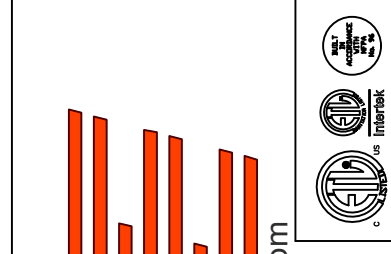
- 20 GA. GALVANIZED STEEL HOUSING.
- STANDARD 4" - 12" ROUND DUCT CONNECTIONS.
- EASILY ACCESSIBLE J-BOX.
- UL507 LISTED.
- EXTREMELY QUIET OPERATION.

**OPTIONS:**

- FAN CONTROL - 3 AMP WHITE SPEED CONTROL FOR CFA CEILING FAN.
- 2 YEAR PARTS WARRANTY.

**REVISIONS**

| REVISIONS | DESCRIPTION | DATE: |
|-----------|-------------|-------|
| Δ         |             |       |
| Δ         |             |       |
| Δ         |             |       |
| Δ         |             |       |



**CAPTIVE**  
Highwoods Group  
www.captiveaire.com  
4641 Paragon Park Rd., Raleigh, NC, 27616 PHONE: (919) 875 - 0420 FAX: 9198750577 EMAIL: esg40@captiveaire.com

CHIPOTLE DOVE VALLEY #5344  
PHOENIX, AZ, 85085

**DATE:** 1/9/2025

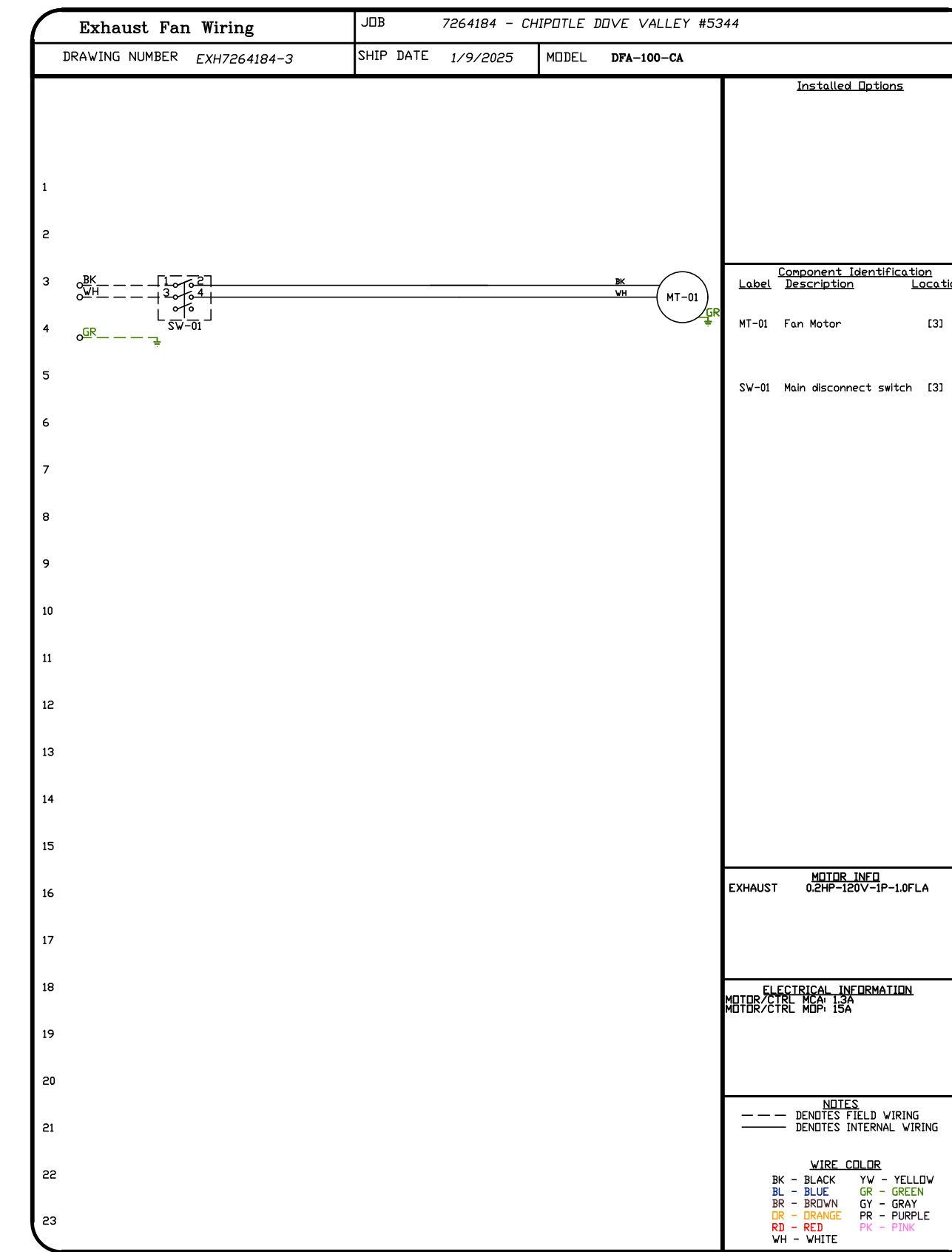
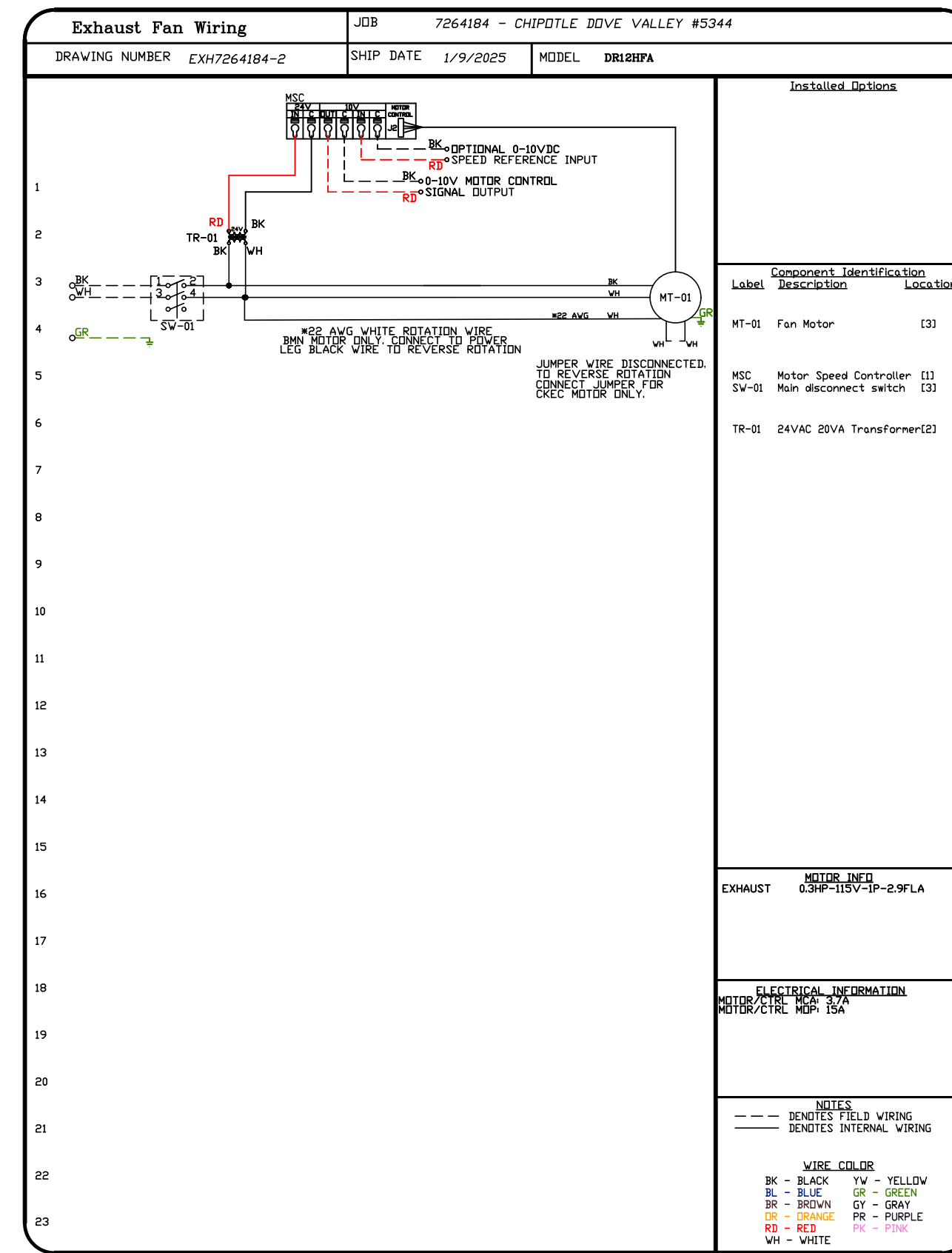
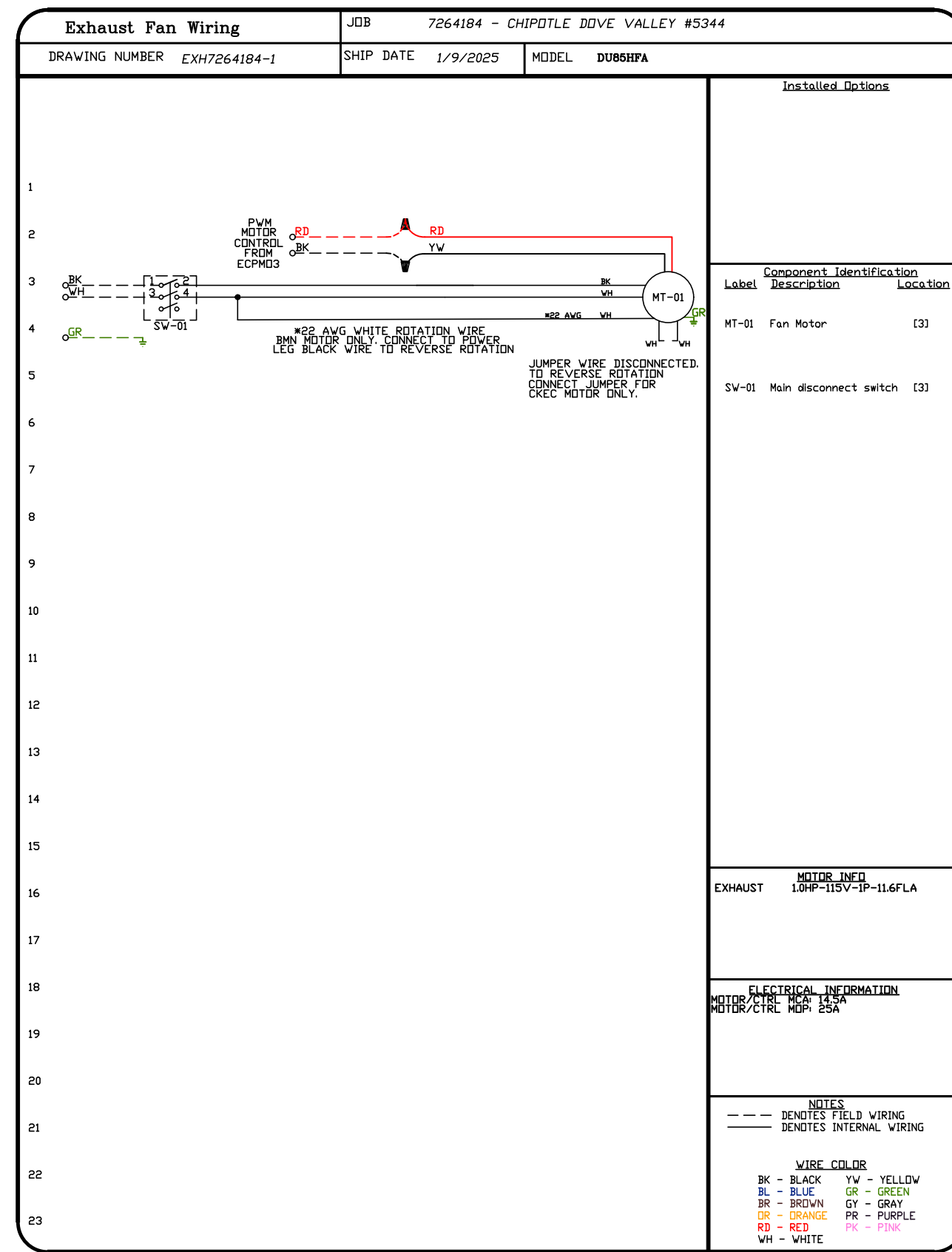
**DWG.#:** 7264184

**DRAWN BY:** JMB-40

**SCALE:** 3/4" = 1'-0"

**MASTER DRAWING**

**SHEET NO.**  
5



| REVISIONS   |      |
|-------------|------|
| DESCRIPTION | DATE |
|             |      |
|             |      |
|             |      |
|             |      |

**Highwoods Group**  
www.captiveaire.com

4641 Paragon Park Rd., Raleigh, NC, 27616 PHONE: (919) 875 - 0420 FAX: 9198750577 EMAIL: esg40@captiveaire.com

CHIPOTLE DOVE VALLEY #5344

PHOENIX, AZ, 85085

DATE: 1/9/2025

DWG.#: 7264184

DRAWN BY: JMB-40

SCALE: 3/4" = 1'-0"

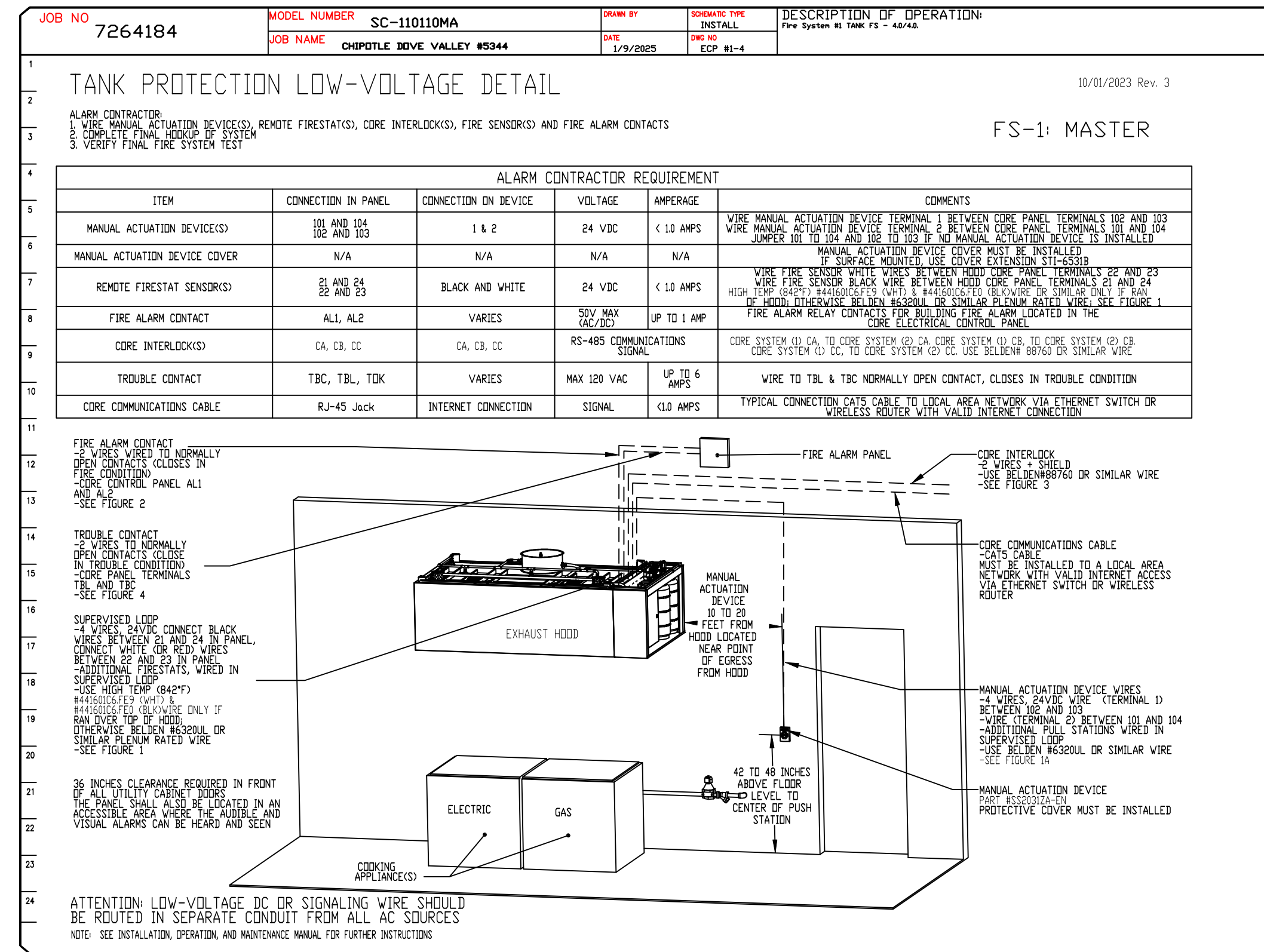
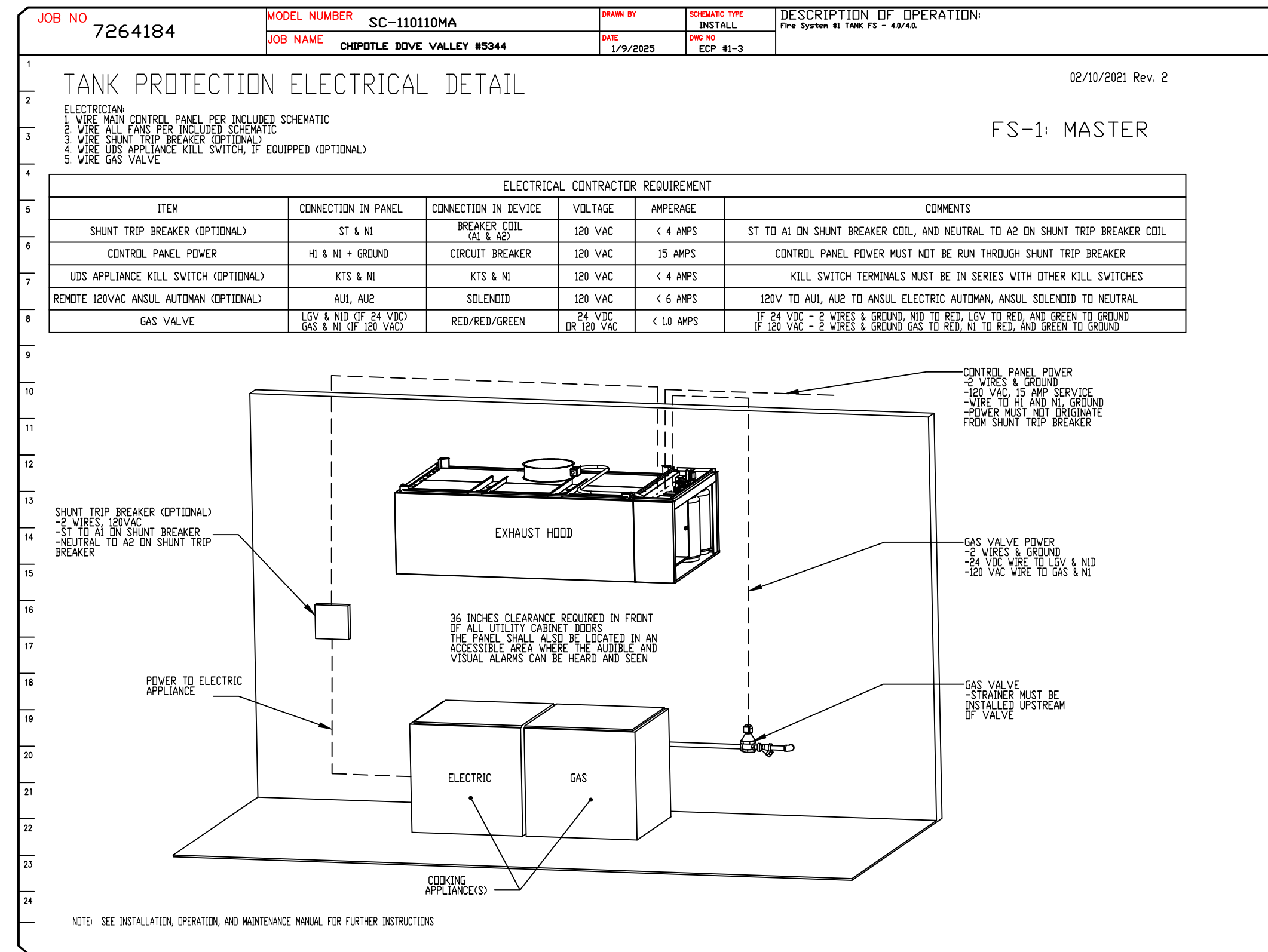
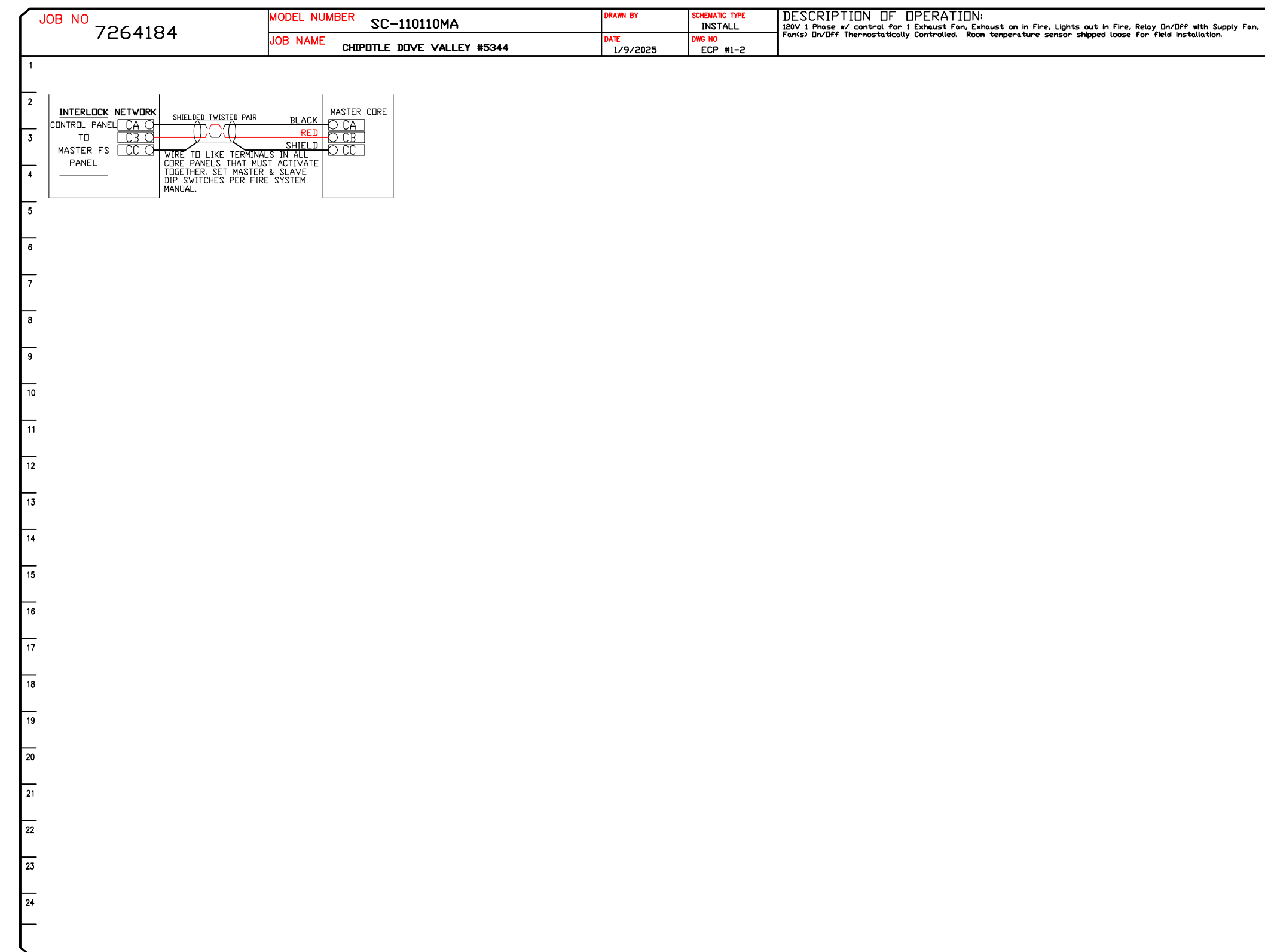
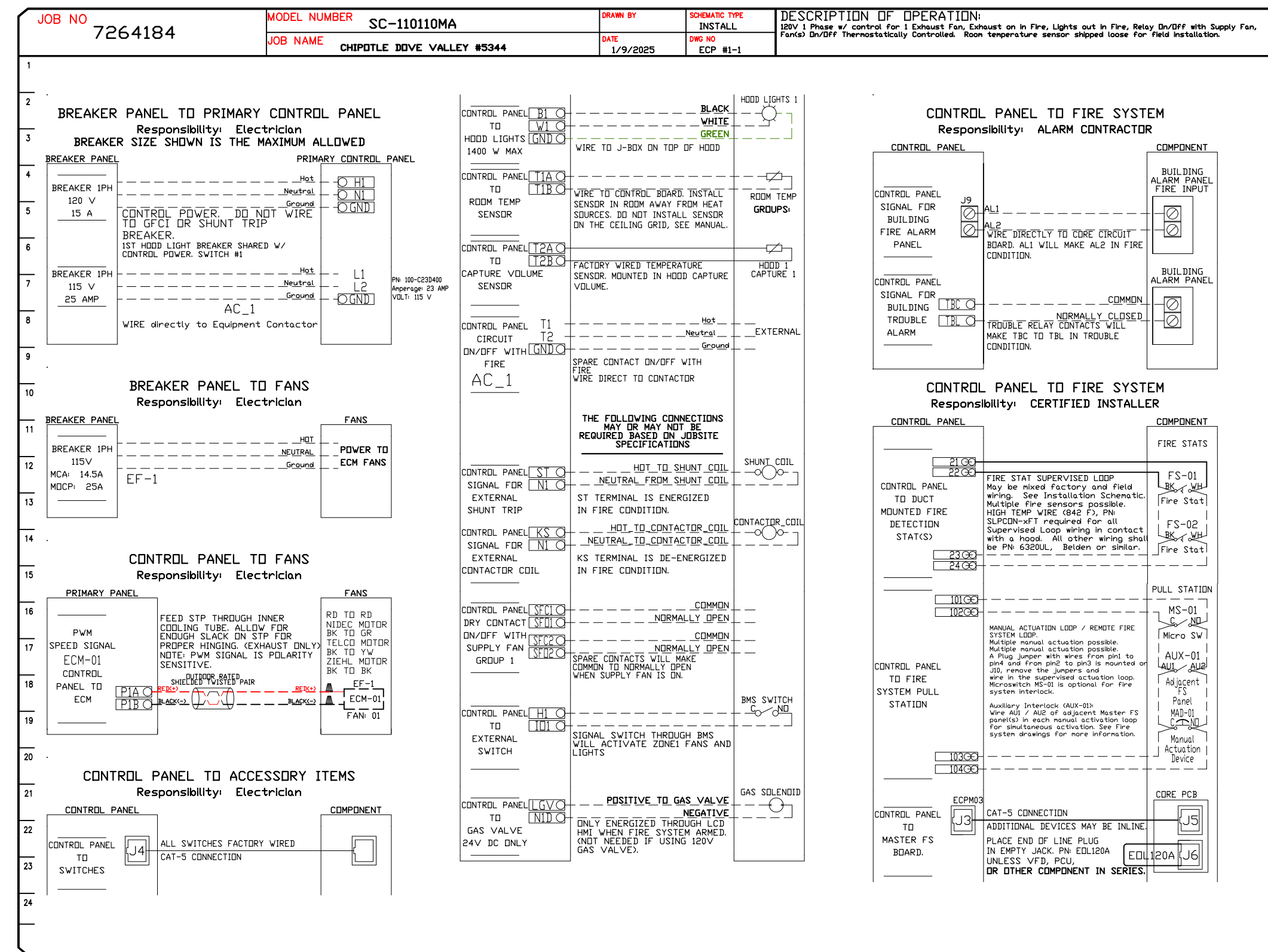
MASTER DRAWING

**SHEET NO.**

6

**ELECTRICAL PACKAGE - JOB#7264184**

| NO | TAG | PACKAGE #   | LOCATION              | SWITCHES                          |                  | OPTION   | FANS CONTROLLED |         |   |       |      |      |
|----|-----|-------------|-----------------------|-----------------------------------|------------------|--|-----------------|---------|---|-------|------|------|
|    |     |             |                       | LOCATION                          | QUANTITY         |  | FAN TAG         | TYPE    | # | HP    | VOLT | FLA  |
| 1  |     | SC-110110MA | UTILITY CABINET RIGHT | UTILITY CABINET RIGHT<br>HOOD # 1 | 1 LIGHT<br>1 FAN | SMART CONTROLS THERMOSTATIC CONTROL<br>W/ RELAY ON/OFF WITH SUPPLY | EF-1            | EXHAUST | 1 | 1.000 | 115  | 11.6 |



**REVISIONS**

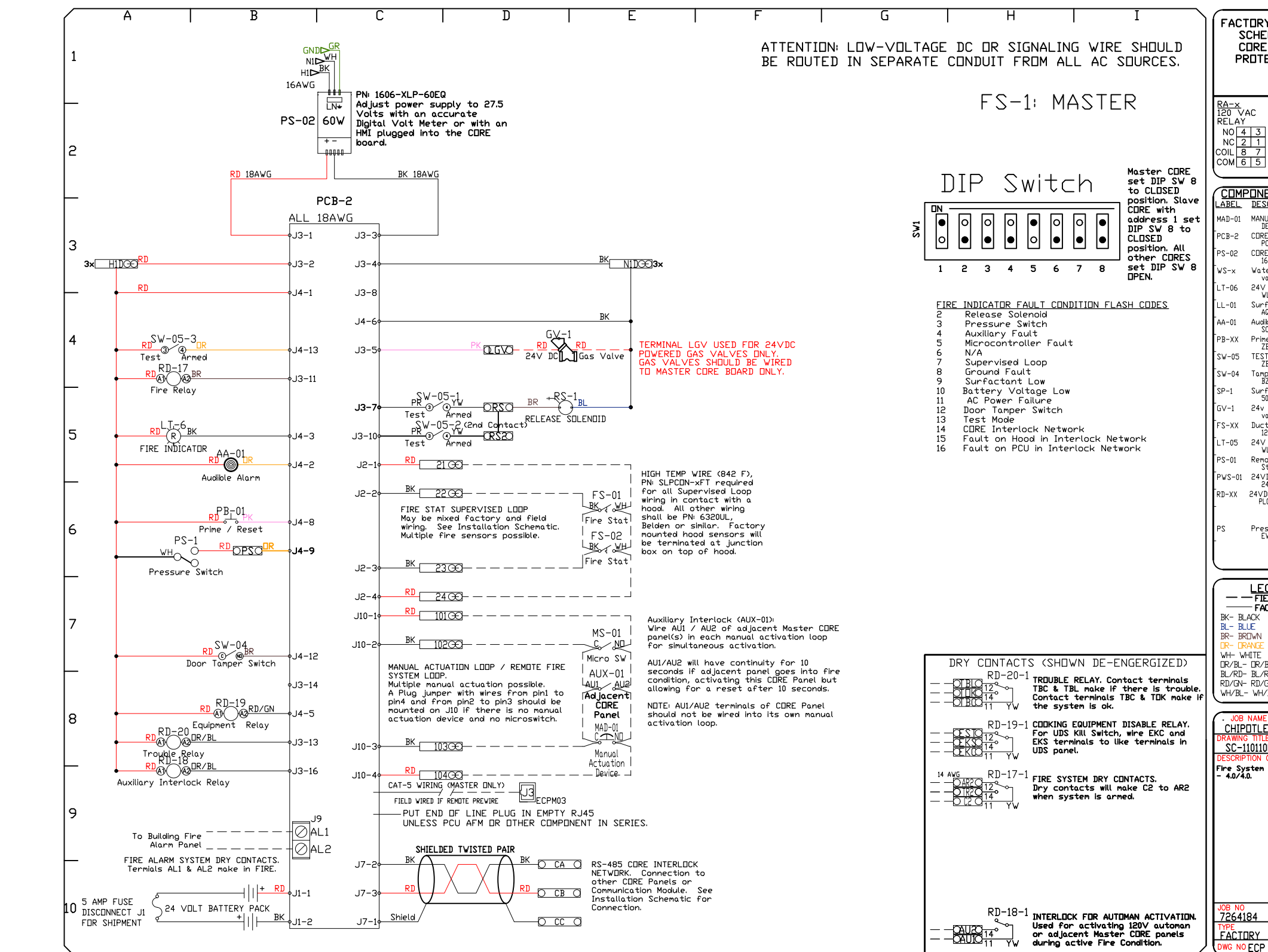
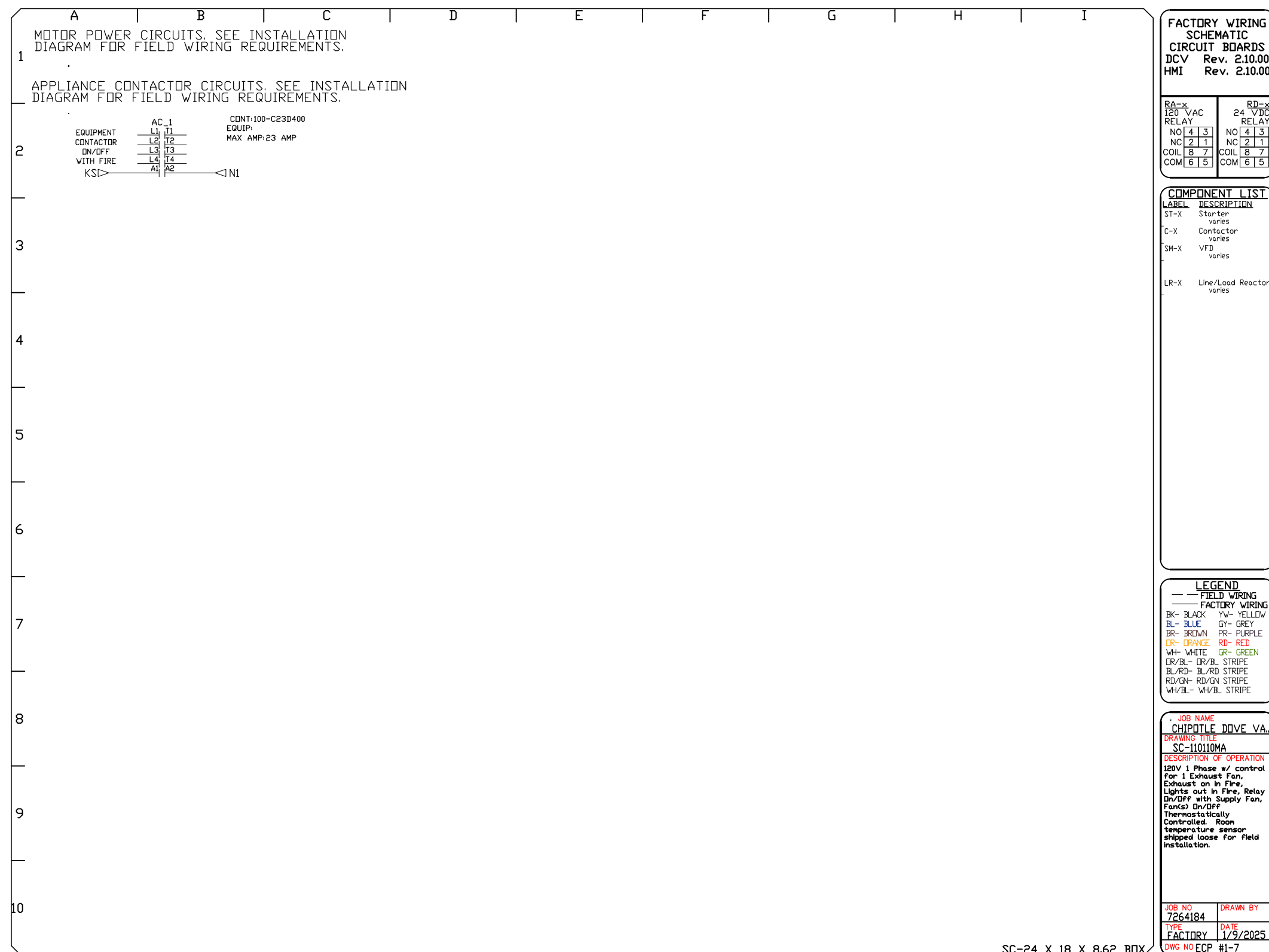
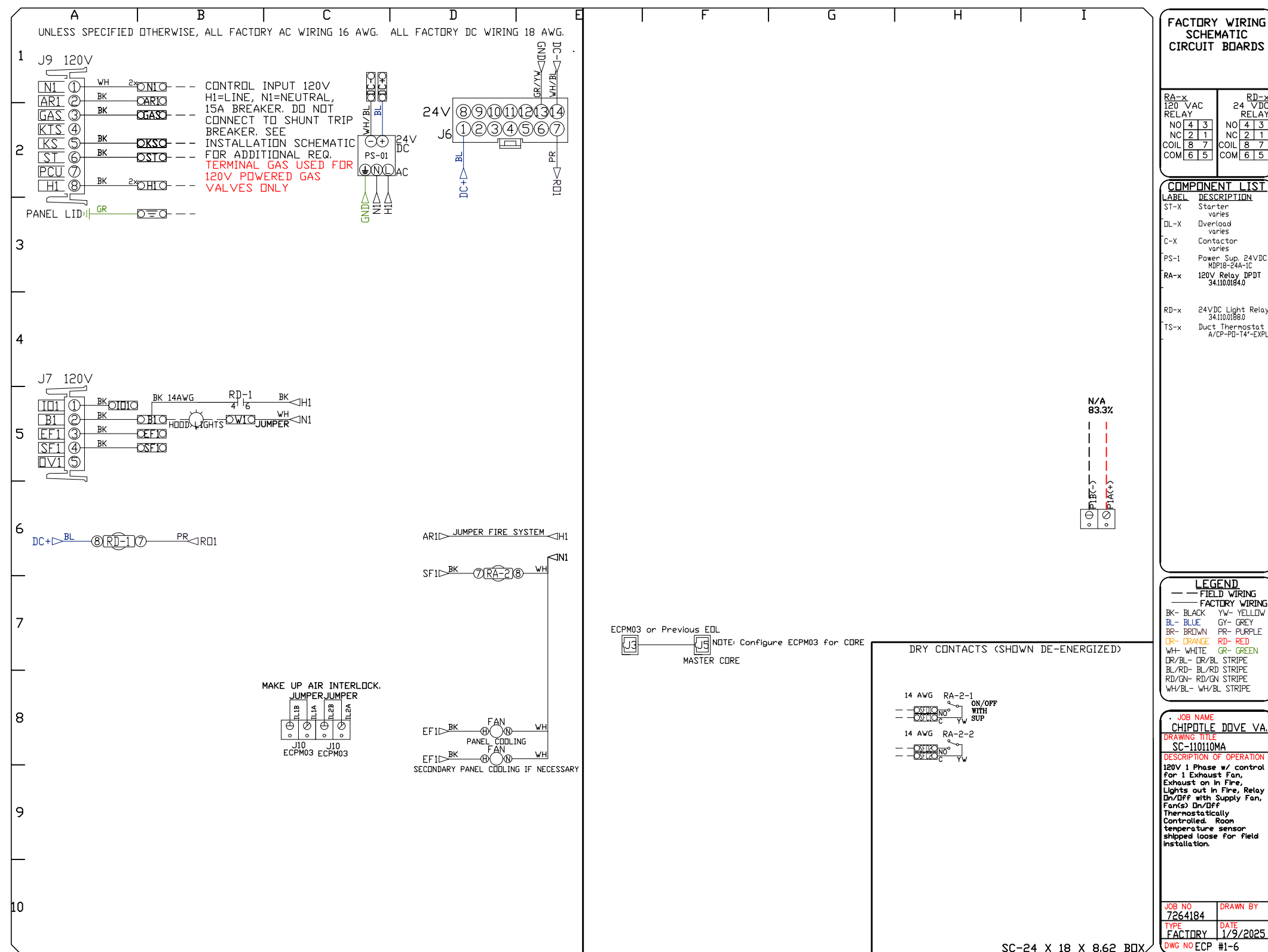
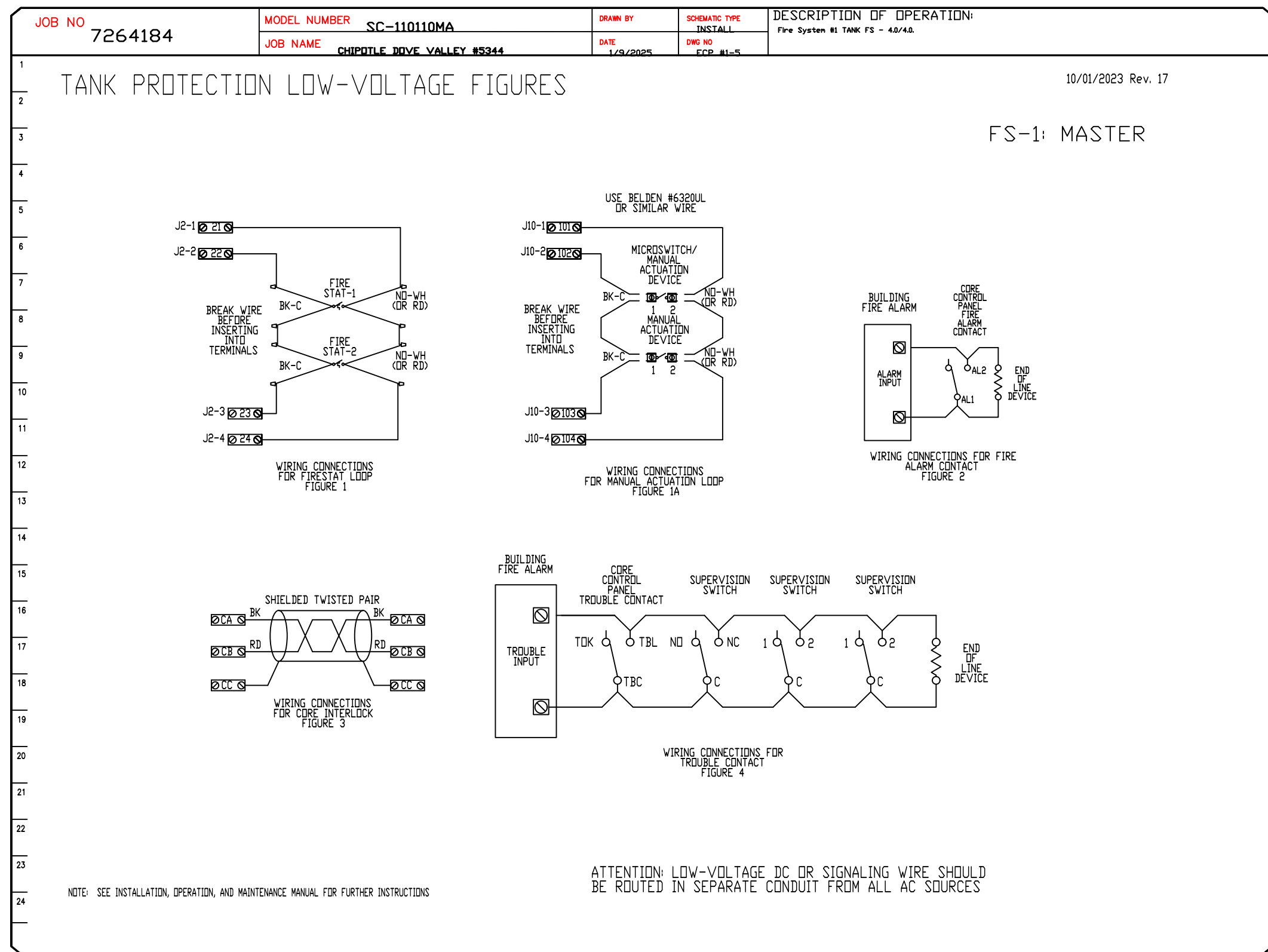
| NO. | DESCRIPTION | DATE |
|-----|-------------|------|
|     |             |      |
|     |             |      |
|     |             |      |
|     |             |      |

**Highwoods Group**  
 4641 Paragon Park Rd., Raleigh, NC, 27616 PHONE: (919) 875 - 0420 FAX: 9198750577 EMAIL: esg10@captiveaire.com

CHIPOTLE DOVE VALLEY #5344  
 PHOENIX, AZ, 85085

DATE: 1/9/2025  
 DWG.#: 7264184  
 DRAWN BY: JMB-40  
 SCALE: 3/4" = 1'-0"  
 MASTER DRAWING

**SHEET NO.**  
7



**REVISIONS**

| DESCRIPTION | DATE |
|-------------|------|
|             |      |
|             |      |
|             |      |
|             |      |

**www.captiveaire.com**

**Highwoods Group**

4641 Paragon Park Rd., Raleigh, NC, 27616 PHONE: (919) 875 - 0420 FAX: 9198750577 EMAIL: esg40@captiveaire.com

**CHIPOTLE DOVE VALLEY #5344**

**PHOENIX, AZ, 85085**

**DATE:** 1/9/2025

**DWG.#:** 7264184

**DRAWN BY:** JMB-40

**SCALE:** 3/4" = 1'-0"

**MASTER DRAWING**

**SHEET NO.** 8