

LIGHTING CONTROL PANEL SCHEDULE: LCP

RELAY	PANEL	CIRCUIT	AREA SERVED	CONTROL	TIME ON	TIME OFF	DIMMER CONTROL	NOTES
R1	A	32	KITCHEN A	TIMECLOCK	7:00:00 AM	12:00:00 AM	N/A	SINGLE POLE (NC)
R2	A	32	KITCHEN B	TIMECLOCK	7:00:00 AM	12:00:00 AM	N/A	SINGLE POLE (NC)
R3	A	30	SPARE	TIMECLOCK	10:00:00 AM	12:00:00 AM	N/A	SINGLE POLE (NC)
R4	A	30	DINING ROOM A	TIMECLOCK	10:00:00 AM	12:00:00 AM	N/A	SINGLE POLE (NC)
R5	A	30	DINING ROOM B	TIMECLOCK	10:00:00 AM	12:00:00 AM	N/A	SINGLE POLE (NC)
R6	A	30	SPARE	TIMECLOCK	10:00:00 AM	12:00:00 AM	N/A	SINGLE POLE (NC)
R7	A	4	RESTROOM EXHAUST FAN	TIMECLOCK	7:00:00 AM	12:00:00 AM	N/A	SINGLE POLE (NC)
R8	A	77	EXT. LIGHTING/SIGNAGE	TIMECLOCK	SUNSET - 1 HR	12:00:00 AM	N/A	SINGLE POLE (NC)

Lighting Control Panel Schedule Legend:
 A. DUPLICATE PANEL SCHEDULE AND PERMANENTLY INSTALL WITHIN THE LIGHTING CONTROL PANEL.

LIGHTING CONTROL COMPONENTS SCHEDULE

DESCRIPTION	QUANTITY	FURNISHED BY	INSTALLED BY	MANUFACTURER	MODEL	REMARKS
LCP FLIGHT LIGHTING CONTROL PANEL	1	TLS	GC	ACUTY	ARP INTERCOR NLT 8FCR (NVL2) NIK FM DYC OPTLE	8 RELAY PANEL FOR DIMMING CONTROL WITH FLUSH MOUNT ENCLOSURE AND DIGITAL TIME CLOCK
WALL MOUNTED OVERRIDE SWITCH	1	TLS	GC	ACUTY	HPD00A 4P	SEE LIGHTING CONTROL DIAGRAM FOR SWITCH CONFIGURATION
WALL MOUNTED DIMMER SWITCH	2	TLS	GC	COOPER	SALDMP W	SLIDE DIMMER COMPATIBLE WITH UP TO 300W LED LIGHTING. SET AT 50% IF DINING ROOM LIGHTS FLICKER AT THIS DIMMER SETTING. THEN GC SHALL PROVIDE LUTRON DVC-253P DIMMER AS REPLACEMENT.
WALL MOUNTED LINE VOLTAGE OCCUPANCY SENSOR	5	TLS	GC	HUBBELL	LHM2S 1-W/WH	WHITE DUAL TECHNOLOGY SINGLE RELAY WITH 1 BUTTON AND NEUTRAL WIRING

LIGHTING FIXTURE SCHEDULE

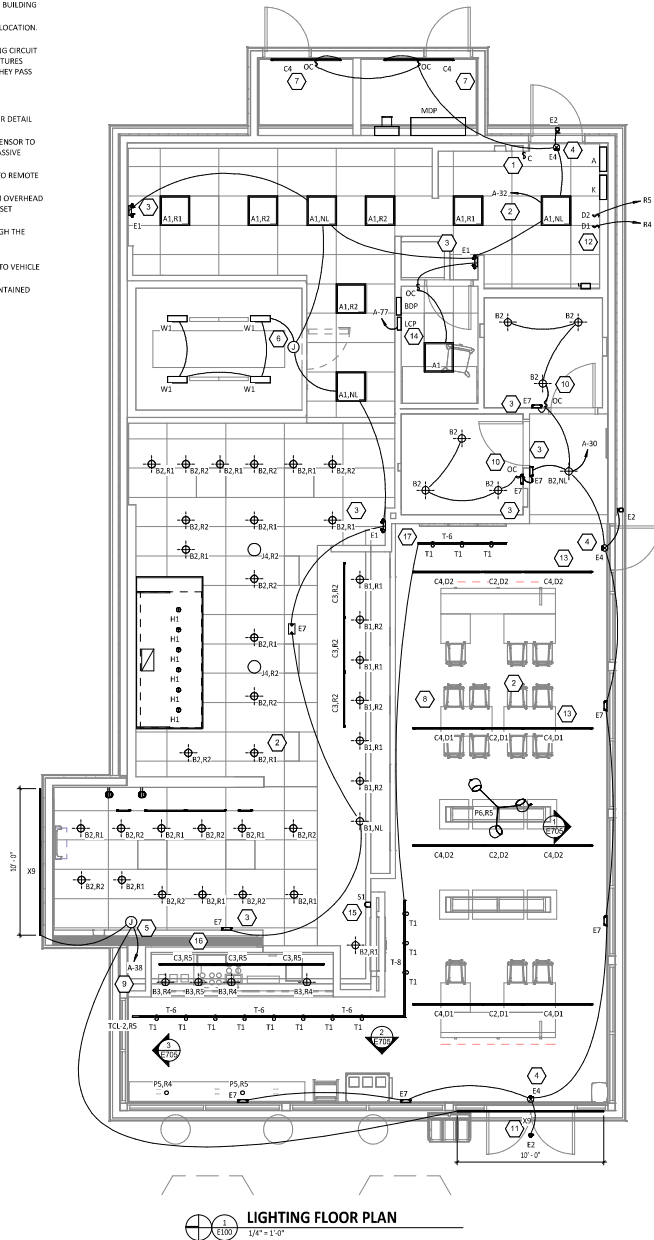
TAG	COUNT	DESCRIPTION	MOUNTING	VOLTAGE	WATTS	FURNISHED BY	INSTALLED BY	BASIS FOR DESIGN		REMARKS	
								MANUFACTURER	MODEL		LAMP
A1	9	2x2 LED LENSED TRACKER	LAY-IN	120V	30W	TLS	GC	NOKA LIGHTING	NF08L-822T/334 W	INTEGRAL 3000K LED	COMPATIBLE WITH 0-10V DIMMING, FACTORY LOCKED TO 3000K
B1	7	RECESSED 6IN CAN LIGHT	CEILING	120V	17W	TLS	GC	NOKA LIGHTING	NHC-6624ATL W/ NIM 57W/M1 TRIM	INTEGRAL 3000K LED	(L) 17W ECOSTRY (ECO) PAR38C-17-GU24-27 (K-32) (D) 17-3700M) W/ GU 24 BASE
B2	35	RECESSED 6IN CAN LIGHT W/ LED TRIM	CEILING	120V	17W	TLS	GC	NOKA LIGHTING	NHC-6624ATL WITH MLRC 95-300W LED TRIM	INTEGRAL 3000K LED	LED TRIM FURNISHED WITH GU24 SOCKET ADAPTER
B3	4	RECESSED 6IN CAN LIGHT W/ BLACK LED TRIM	CEILING	120V	12W	TLS	GC	NOKA LIGHTING	NHC-6624ATL WITH MLRC2-95-1278B LED TRIM	INTEGRAL 3000K LED	BLACK LED TRIM FURNISHED WITH GU24 SOCKET ADAPTER
C0	2	LOW PROFILE LED - 1 FT	SURFACE	120V	5W	TLS	GC	HERA LIGHTING	EL/LED/12/W/W	INTEGRAL 3000K LED	FURNISHED WITH COVERS, CONNECTORS, AND ONE HARDWARE BOX OR CORD/PLUG PER SECTION
C2	6	LOW PROFILE LED - 3 FT	SURFACE	120V	12W	TLS	GC	HERA LIGHTING	EL/LED/34/W/W	INTEGRAL 3000K LED	FURNISHED WITH COVERS, CONNECTORS, AND ONE HARDWARE BOX OR CORD/PLUG PER SECTION.
C3	6	LOW PROFILE LED - 4 FT	SURFACE	120V	15W	TLS	GC	HERA LIGHTING	EL/LED/46/W/W	INTEGRAL 3000K LED	FURNISHED WITH COVERS, CONNECTORS, AND ONE HARDWARE BOX OR CORD/PLUG PER SECTION.
C4	10	LOW PROFILE LED - 5 FT	SURFACE	120V	18W	TLS	GC	HERA LIGHTING	EL/LED/59/W/W	INTEGRAL 3000K LED	FURNISHED WITH COVERS, CONNECTORS, AND ONE HARDWARE BOX OR CORD/PLUG PER SECTION.
E1	3	EMERGENCY LIGHT - DUAL HEAD	VARIOUS	120V	2W	TLS	GC	EXITRONIX	LED 90	INTEGRAL LED	90 MINUTE BATTERY BACKUP
E2	3	EXTERIOR REMOTE EMERGENCY LIGHT	VARIOUS	4V	1W	TLS	GC	EXITRONIX	MLED1-B/WP	INTEGRAL LED	LOW VOLTAGE REMOTE EMERGENCY LIGHT POWERED BY REMOTE-CAPABLE EXIT SIGN WITH MOUNTING PLATE
E4	3	WHITE EXIT SIGN WITH EMERGENCY LIGHT STANDARD RED LETTERS	VARIOUS	120V	2W	TLS	GC	EXITRONIX	CLED U-WH	INTEGRAL LED	90 MINUTE BATTERY BACKUP WITH INTEGRAL EMERGENCY LIGHT, REMOTE HEAD CAPABLE
E7	9	EMERGENCY LIGHT	VARIOUS	120V	2W	TLS	GC	EXITRONIX	EV2	INTEGRAL LED	90 MINUTE BATTERY BACKUP
H1	6	MAJOR PROOF HOOD LIGHT	SURFACE	120V	15W	HST/TS	HS	FURNISHED W/ HOOD	NUNSHED W/ HOOD	INTEGRAL LED	INSTALL LAMP FURNISHED SEPARATELY BY LIGHTING SUPPLIER
H4	2	DECORATIVE PENDANT	PENDANT	120V	9W	TLS	GC	BARNLIGHT	BLE-C8N-100-ASH-58 K-100-NA-GU24	INTEGRAL LED	GREEN CREATIVE; WITH BLACK LAMPshade, BLACK CORD, AND OAK LAMPHOLDER
P5	2	PENDANT	PENDANT	120V	5W	TLS	GC	HI-LITE MFG	HL-C-91/CB2-1/20W/BL	INTEGRAL LED	ADJUST CORD LENGTH FOR MOUNTING HEIGHT CALLED FOR IN ARCHITECTURAL DRAWINGS
PF	1	DECORATIVE DINING ROOM PENDANT	PENDANT	120V	30W	TLS	GC	BARNLIGHT	BLE-C-JGT-133-35630-3	INTEGRAL LED	HARDWIRED SET OF 13) HEADS WITH UNIVERSAL CANOPY AND STANDARD BLACK CABLES
S1	1	DRIVE-UP PREL-UP WINDOW CHIMNEY/TROBE	WALL	16V	0W	TLS	GC	FEDERAL SIGNAL	33A5038 W/ SLAMBW-022-024	INTEGRAL	SET SWITCH A TO "CHIME 1 SINGLE" [1301] AND SWITCH B TO "CHIME 2 SINGLE" [002113]
T1	14	TRACK HEAD	TRACK	120V	10W	TLS	GC	JUNO	8005_80K 90CRI PDIM WHI_BL	INTEGRAL LED	BLACK CYLINDER TRACK HEAD W/ UNIVERSAL 120V TRAC ADAPTER AND WIDE FLOOD BEAM
T-6	4	TRACK (6 FT)	SURFACE	120V	0W	TLS	GC	JUNO	T 8FT BL	N/A	SINGLE CIRCUIT, BLACK FINISH; FURNISH WITH CONNECTORS TO ACHIEVE ARRANGEMENT SHOWN ON PLANS. TRIM AS REQUIRED FOR LENGTHS SHOWN.
T-8	1	TRACK (8 FT)	SURFACE	120V	0W	TLS	GC	JUNO	T 8FT BL	N/A	SINGLE CIRCUIT, BLACK FINISH; FURNISH WITH CONNECTORS TO ACHIEVE ARRANGEMENT SHOWN ON PLANS. TRIM AS REQUIRED FOR LENGTHS SHOWN.
TCL-2	1	TRACK CURRENT LIMITER (240W)	SURFACE	120V	0W	TLS	GC	JUNO	TELEF11 BL W/ TELCB 2A BLACK	N/A	BLACK CURRENT LIMITING END FEED WITH CIRCUIT BREAKER
W1	4	WIC LED LIGHT	SURFACE	120V	29W	WCS	GC	FURNISHED W/ WIC	FURNISHED W/ WIC	INTEGRAL LED	WET-RATED COOLER FIXTURE
X9	2	EXTERIOR LED CHANNEL LIGHT	SURFACE	120V	45W	TLS	GC	PARADIGM LED	AMC-2410-5 W/ OPAL LENS AND END CAPS	INTEGRAL LED	FURNISHED W/ REMOTE-MOUNTED NEMA 3R LED DRIVER. SEE PLAN FOR LENGTHS.

LIGHTING FIXTURE SCHEDULE NOTES

A. SEE THE ARCHITECTURAL REFLECTED CEILING PLAN FOR EXACT LIGHT LOCATIONS.
 B. SEE THE ARCHITECTURAL LIGHTING DETAILS FOR FIXTURE CONSTRUCTION DETAILS.

ELECTRICAL LIGHTING PLAN NOTES

- INSTALL WALL MOUNTED LIGHTING OVERRIDE SWITCH AND CONNECT TO LCP AS SHOWN IN DETAIL 6/ET10
- FOR UNCRUITED LIGHT FIXTURES, CONNECT TO RELAY CIRCUIT INDICATED NEXT TO THE FIXTURE TAG THROUGH THE LIGHTING CONTROL PANEL (LCP) UNLESS NOTED OTHERWISE.
- WALL MOUNT THE EMERGENCY LIGHT FIXTURE AT 6" BELOW THE CEILING UNLESS NOTED OTHERWISE.
- VERIFY MOUNTING HEIGHT OF EXIT SIGN PRIOR TO ROUGH-IN. EXIT SIGN MUST BE VISIBLE FROM AREA SERVED AFTER BUILDING SYSTEMS HAVE BEEN INSTALLED. SEE ARCHITECTURAL ELEVATIONS FOR FURTHER INFORMATION.
- INSTALL LED DRIVERS FURNISHED WITH THE X9 LED STRIP LIGHTS ON WALL 8" ABOVE THE CEILING IN AN ACCESSIBLE LOCATION. PROVIDE LOW VOLTAGE WIRING FROM LED DRIVER TO THE X9 LIGHT FIXTURES AS SHOWN.
- INSTALL LIGHT FIXTURES FURNISHED WITH THE WALK-IN COOLER. PROVIDE UNSWITCHED CONDUCTOR FROM LIGHTING CIRCUIT TO WALK-IN COOLER LIGHTING J-BOX AND FROM J-BOX TO LIGHT FIXTURES AS SHOWN. CONDUIT BETWEEN LIGHT FIXTURES SHALL BE ROUTED ON THE INTERIOR OF THE WALK-IN COOLER. SEAL INTERIOR AND EXTERIOR OF CONDUITS WHERE THEY PASS THROUGH THE WALL IN COOLER ENVELOPE PER THE NEC.
- INSTALL CA FIXTURE ON WALL ABOVE DOOR AT 96" AFF.
- PROVIDE UNISTRUT AS SHOWN ON THE ARCHITECTURAL RCP PER THE ARCHITECTURAL UNISTRUT DETAIL, TYPICAL.
- CONNECT EXTERIOR LIGHTING CIRCUIT TO CIRCUIT SHOWN THROUGH THE EXTERIOR LIGHTING CONTACTOR PANEL PER DETAIL 6/ET10.
- INSTALL WALL-MOUNTED OCCUPANCY SENSOR FURNISHED BY LIGHTING SUPPLIER AT 42" AFF. ADJUST OCCUPANCY SENSOR TO PROVIDE AUTOMATIC ON/AUTOMATIC OFF OPERATION WITH A FIXED TIMER OF 30 MINUTES AND WITH BOTH THE PASSIVE INFRARED AND ULTRASONIC SENSORS ENABLED.
- INSTALL E2 REMOTE EMERGENCY LIGHT TO BOTTOM OF CANOPY. CONCEAL LOW VOLTAGE WIRING FROM EXIT SIGN TO REMOTE EMERGENCY LIGHT.
- INSTALL WALL-MOUNTED DIMMERS ABOVE PANELBOARDS 8" ABOVE LAY-IN CEILING FOR CONTROL OF DINING ROOM OVERHEAD STRIP LED AND PENDANT LIGHTS. CONNECT DIMMERS TO RELAYS SHOWN THROUGH THE LIGHTING CONTROL PANEL. SET DIMMERS AT 50%.
- CONNECT DINING ROOM (RELAY CIRCUITS RA AND RS) OVERHEAD STRIP LED LIGHTS TO THE RELAY INDICATED THROUGH THE CORRESPONDING WALL-NITD DIMMER INSTALLED ABOVE THE PANELBOARDS.
- INSTALL LIGHTING CONTROL SYSTEM PER DETAIL 6/ET10.
- INSTALL CHIME/STROBE FURNISHED WITH VEHICLE DETECTION SYSTEM ON WALL 12" BELOW CEILING AND CONNECT TO VEHICLE DETECTOR SYSTEM PER THE MANUFACTURER'S INSTALLATION INSTRUCTIONS.
- PENETRATIONS THROUGH SHEAR WALL SHALL BE LIMITED TO 10" DIAMETER OR GROUP OF PENETRATIONS ALL CONTAINED WITHIN 10" DIAMETER; IF LARGER PENETRATIONS OR GROUPS OF PENETRATIONS ARE REQUIRED COORDINATE WITH STRUCTURAL ENGINEER FOR APPROPRIATE BRACING. SEE STRUCTURAL DRAWINGS FOR SHEAR WALL LOCATION.
- FEED BOTH TRACKS IN SERIES DOWNSTREAM FROM THE TCC-2 CURRENT LIMITER.



Lighting Floor Plan
 1/4" = 1'-0"

NATIONAL
 4635 Trieman Blvd, Suite 250
 Hilliard, Ohio 43026
 Phone: (614) 751-9610
 Fax: (614) 552-5240
 Contact: Mike Chapman
 (614) 595-9543
 mchapman@nationalengineering.com



CHIPOTLE MEXICAN GRILL
 CHIPOTLE MEXICAN GRILL, INC.
 PO BOX 161566
 COLUMBUS, OH 43216-2566
 TELEPHONE: 614.342.2400
 INTERNET: WWW.CHIPOTLE.COM

STORE NO.: 5344
 Dove Valley
 2975 W Dove Valley Road
 Phoenix, AZ 85085

Issue Record:
 11/19/2024 PERMIT ISSUE

Revisions:

Drawn: Checkd
 MPC MPC

Project No:
 2402041

Contract:
 ELECTRICAL LIGHTING PLAN

E100