

**Report By:**

National TAB  
1329 E. KEMPER ROAD  
SUITE 4210  
CINCINNATI, OH 45246



**Report: TAB REPORT**  
**Function: Test, Adjust, & Balance**  
**Date: 04/04/2025**  
**Completed By: National TAB**

# PROJECT

## Morton Gettys Law Office (Rock Hill, SC)

113 E. Main Street

Rock Hill, SC 29730

### Client

Action Mechanical Inc.

PO Box 7325

CHARLOTTE, NC 28241

# National TAB

Project: Morton Gettys Law Office (Rock Hill, SC)

## Table Of Contents

| <b>Section</b>         | <b>Page #</b> |
|------------------------|---------------|
| Certification          | 3             |
| Equipment Calibrations | 4             |
| Abbreviations          | 5             |
| GRD                    | 6             |
| AHU/RTU                | 7             |
| Split Sys Furnace      | 17            |
| FAN - Exhaust          | 19            |



# CERTIFICATION

**PROJECT:** Morton Gettys Law Office (Rock Hill, SC)

The data presented in this report is a record of system measurements and final adjustments that have been obtained in accordance with the current edition of the NEBB *Procedural Standards for Testing, Adjusting, and Balancing of Environmental Systems*. Any variances from design quantities, which exceed NEBB tolerances, are noted in the Test-Adjust-Balance Report Project Summary.

The air distribution system has been tested and balanced and final adjustments have been made in accordance with NEBB standards and the project specifications.

**NEBB TAB FIRM:** National TAB-Southeast

**REGISTRATION NO:** 3755

**CERTIFIED BY:** J. Scott Springer 23312

**DATE:** 4/3/2025

The hydronic distribution system has been tested and balanced and final adjustments have been made in accordance with NEBB standards and the project specifications.

**NEBB TAB FIRM:** National TAB-Southeast

**REGISTRATION NO:** 3755

**CERTIFIED BY:** J. Scott Springer 23312

**DATE:** \_\_\_\_\_

## Submitted and Certified by:

**NEBB TAB FIRM:** National TAB-Southeast

**TAB PROFESSIONAL:** J. Scott Springer

**SIGNATURE:** 

**REGISTRATION NO:** 3755 (NTAB) / 23312

**CERTIFICATION EXP:** 12/31/2025





# National TAB

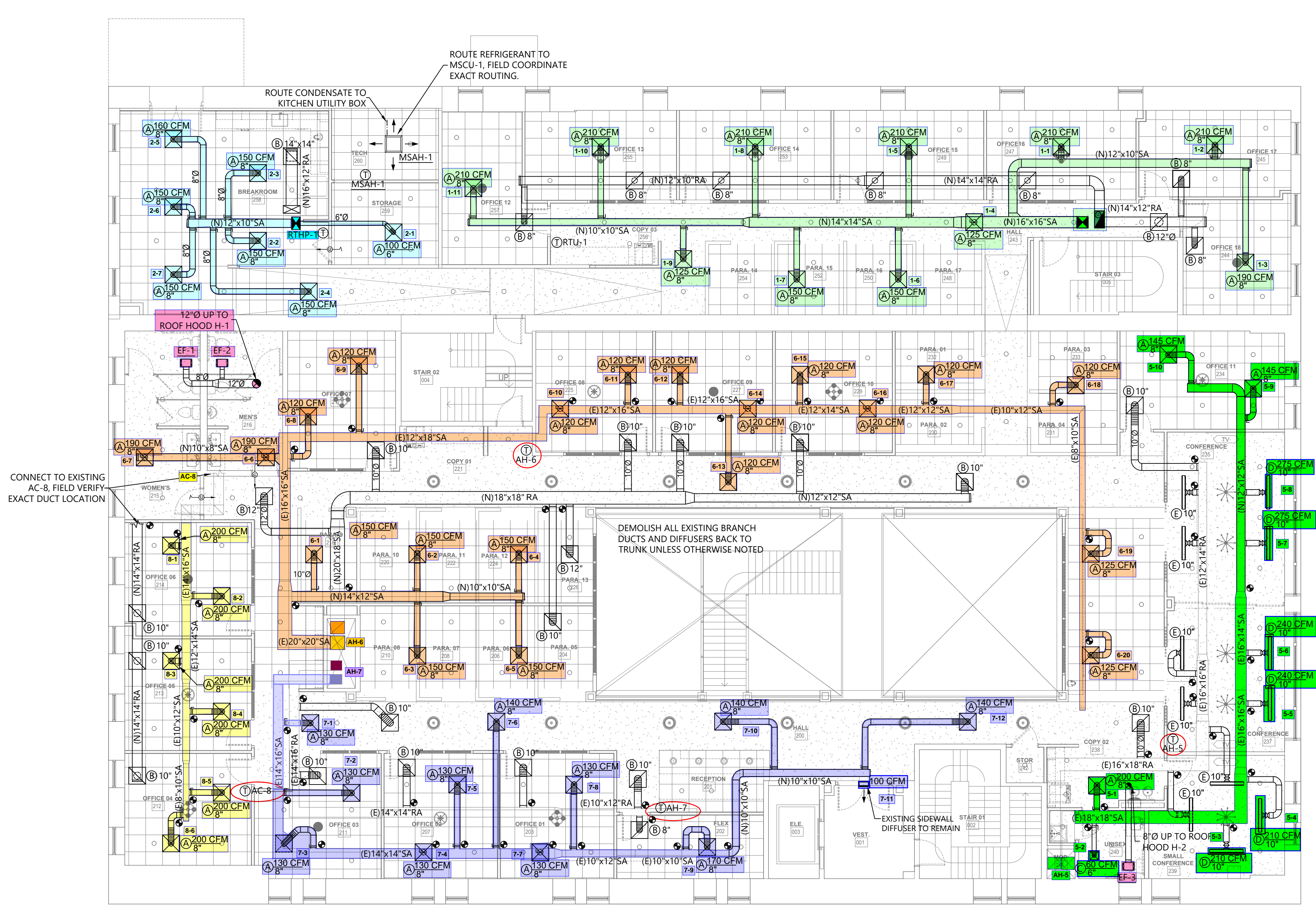
## Testing, Adjusting, and Balancing Equipment



| Function    |                                   | Range                     | Minimum Accuracy             | Instrument Information               | Calibration Date | Date Due   |
|-------------|-----------------------------------|---------------------------|------------------------------|--------------------------------------|------------------|------------|
| AIR         | AIR PRESSURE                      | 0 in wg to 10 in wg       | 2% +/- 0.001 in wg           | Shortridge ADM-880C S/N M05066       | 10/15/2024       | 10/15/2025 |
|             | AIR VELOCITY INSTRUMENT           | 50 fpm to 3900 fpm        | +/- 5 % +/- 7 fpm            | Shortridge ADM-880C S/N M05066       | 10/15/2024       | 10/15/2025 |
|             | DIRECT HOOD READING               | 100 cfm to 2000 cfm       | +/- 3 % +/- 7 cfm            | Shortridge Flow Hood                 | 10/15/2024       | 10/15/2025 |
| TEMPERATURE | AIR METER                         | -20 F to 240 F            | +/- .5 % 2 F                 | Cooper ATKINS - SRH77A S/N 081820093 | 10/15/2024       | 10/15/2025 |
|             | AIR PROBE                         | -20 F to 240 F            | +/- .5 % 2 F                 | Cooper ATKINS - PD1388 7-6 S/N 5028  | 10/15/2024       | 10/15/2025 |
|             | IMMERSION METER                   | -20 F to 240 F            | +/- .5 % 2 F                 | Cooper ATKINS - SRH77A S/N 081820093 | 10/15/2024       | 10/15/2025 |
|             | IMMERSION PROBE                   | -20 F to 240 F            | +/- .5 % 2 F                 | Cooper ATKINS - PD1388 7-6 S/N 1075  | 10/15/2024       | 10/15/2025 |
|             | CONTACT METER                     | -20 F to 240 F            | +/- .5 % 2 F                 | Cooper ATKINS - SRH77A S/N 081820093 | 10/15/2024       | 10/15/2025 |
|             | CONTACT PROBE                     | -20 F to 240 F            | +/- .5 % 2 F                 | Cooper ATKINS - PD1388 7-6 S/N 4011  | 10/15/2024       | 10/15/2025 |
| HUMIDITY    | HUMIDITY PROBE                    | 10 % RH to 90 % RH        | 3% of reading                | Cooper ATKINS - SRH77A S/N 090315046 | 10/15/2024       | 10/15/2025 |
| ELECTRICAL  | VOLTAGE MEASUREMENT               | 0 VAC to 600 VAC          | 2 % reading +/- 5 digits     | Dwyer CM-1 - S/N 190800099           | 10/15/2024       | 10/15/2025 |
|             | AMPERAGE MEASUREMENT              | 0 Amperers to 100 Amperes | 2 % reading +/- 5 digits     | Dwyer CM-1 - S/N 190800099           | 10/15/2024       | 10/15/2025 |
| ROTATION    | ROTATION MEASUREMENT              | 60 rpm to 5000 rpm        | 2 % reading 2 rpm            | Dwyer TAC-L - S/N S1100123           | 10/15/2024       | 10/15/2025 |
| HYDRONIC    | PRESSURE MEASUREMENT              | -30 in Hg to 200 psi      | ±2% of reading +/- 1 psi     | Dwyer 490W-6 - S/N 01L6NK            | 6/3/2024         | 6/3/2025   |
|             | DIFFERENTIAL PRESSURE MEASUREMENT | 0 psi - 80 psi            | ±2% of reading +/- 1 psi     | Dwyer 490W-6 - S/N 01L6NK            | 6/3/2024         | 6/3/2025   |
| DALT        | DUCT LEAKAGE                      | -10" - +10" wc            | ±1% of reading +/- 0.004" wc | Kanomax DALT 6900 S/N: 080439        | 3/2024           | 3/1/2025   |

## Abbreviation List

|  |   |
|--|---|
| A = Area (ft <sup>2</sup> )                  | S.F. = Service Factor                       |
| AHU = Air Handling Unit                      | SF = Supply Fan                             |
| A <sub>k</sub> = Effective Area              | SP = Static Pressure                        |
| BHP = Brake Horsepower (IP) HP               | SR = Supply Register                        |
| Btu = British Thermal Unit                   | T = Temperature                             |
| Btu/h = Btuh = BTUH = BTU/Hour               | T <sub>ma</sub> = Mixed Air Temperature     |
| CL = Center Distance (used in belt formula)  | T <sub>oa</sub> = Outside Air Temperature   |
| CD = Ceiling Diffuser                        | T <sub>ra</sub> = Return Air Temperature    |
| CF = Correction Factor                       | H = Head (in wc, ft wc, psi)                |
| CFM = Volumetric Flow: Cubic Feet Per Minute | h = Enthalpy                                |
| CO <sub>2</sub> = Carbon Dioxide             | HP = Horsepower                             |
| CO = Carbon Monoxide                         | hr = Hour                                   |
| C <sub>v</sub> = Flow Constant               | K <sub>v</sub> = Flow constant (SI)         |
| d = Diameter (in.) IP                        | kW = Kilowatt = 1000 Watts                  |
| Δ = Difference or Change (Final - Initial)   | LAT = Leaving Air Temperature               |
| DB = Dry Bulb                                | lb = Pounds                                 |
| EA = Exhaust Air                             | LWT = Leaving Water Temperature             |
| EAT = Entering Air Temperature               | ma = Mixed Air                              |
| EF = Exhaust Fan                             | MIN = Minimum                               |
| Eff = Efficiency                             | MAX = Maximum                               |
| EG = Exhaust Grille                          | N/A = Not Applicable                        |
| ESP = External Static Pressure               | NA = No Access                              |
| EWT = Entering Water Temperature             | NL = Not Listed                             |
| °F = Degrees Fahrenheit, °F                  | NPSHA = Net Positive Suction Head Available |
| FPB = Fan Powered Box                        | NS = Not Specified                          |
| FLA = Full Load Amps                         | OA = Outside Air                            |
| fpm = Feet per Minute (fpm)                  | OAT = Outside Air Temperature               |
| ft = Foot                                    | PD = Sheave Pitch Diameter                  |
| gal = Gallons                                | P.D. = Pressure Drop                        |
| GPM = Gallons Per Minute (GPM)               | PF = Power Factor                           |
| h = Enthalpy (BTU/lb dry air)                | SG = Supply Grille                          |
| P = Pressure                                 | SR = Supply Register                        |
| ppm = parts per million                      | TP = Total Pressure                         |
| psi = Pounds Per Square Inch                 | T <sub>ra</sub> = Return Air Temperature    |
| psid = PSI Differential                      | TS = Tip Speed (fpm) IP, (m/s) SI           |
| r = Radius (in)                              | TSP = Total Static Pressure                 |
| % <sub>ra</sub> = % of Return Air            | V = Velocity                                |
| RA = Return Air                              | VAV = Variable Air Volume                   |
| RAT = Return Air Temperature                 | VD = Volume Damper                          |
| RF = Return Fan                              | VFD = Variable Frequency Drive              |
| RG = Return Grille                           | W = Watt                                    |
| RH = Relative Humidity                       | WB = Wet Bulb                               |
| RPM = Revolutions Per Minute                 | wg = wc = water gauge = water column        |
| RTU = Roof Top Unit                          | WHP = Water Horsepower (IP)                 |
| SA = Supply Air                              | ω = Humidity Ratio                          |



1 MECHANICAL PLAN  
1/8" = 1'-0"

- GENERAL NOTES:
- COORDINATE THERMOSTAT LOCATION WITH OWNER PRIOR TO ROUGH-IN.
  - LOCATION AND SIZES OF EXISTING DUCT WORK AND EQUIPMENT IS BASED ON SITE SURVEY AND AS-BUILT DRAWINGS. FIELD VERIFY AND REPORT ANY INTERFERENCES OR DISCREPANCIES TO ENGINEER.
  - ALL EXISTING EQUIPMENT SHALL BE EVALUATED BY CONTRACTOR. CONTRACTOR SHALL REPORT ANY DEFICIENCIES TO OWNER.
  - CONTRACTOR SHALL SURVEY SITE BEFORE PURCHASING OR FABRICATING EQUIPMENT OR DUCT.

FOR PRICING

vinyet architecture

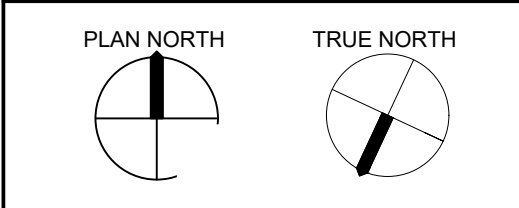
312 Pendleton St, Rock Hill, SC 29730  
contact@vinyet.com  
asheville 828.619.7662  
charleston 803.324.9531  
rock hill

This document is an instrument of service and shall remain the property of Vinyet Architecture, LLC, who retains all common law, statutory and other reserved rights, including the copyright therein.  
Copyright © 2023  
Vinyet Architecture, LLC

Revision Schedule

| Rev # | Revision Description | Date |
|-------|----------------------|------|
|       |                      |      |

MORTON & GETTYS  
ATTORNEYS AT LAW



MORTON AND GETTYS  
ATTORNEYS AT LAW  
113 E. Main Street Rock Hill, SC  
29730

MECHANICAL PLAN

A23001 12.04.23

M100

D  
C  
B  
A

# National TAB

Project: Morton Gettys Law Office (Rock Hill, SC)

System/Unit: AHU/RTU



Asset: RTHP-1

AREA:258

| Unit Data        |        |                   |
|------------------|--------|-------------------|
|                  | Design | Actual            |
| MFG              | NA     | RHEEM             |
| Serial Num       | -      | F462000993        |
| Model Num        | NA     | RHPCZR036ACT000AA |
| Configuration    | -      | VERTICAL          |
| Num OA Filters 1 | -      | NA                |
| OA Filter Size 1 | -      | NA                |
| Num PreFilter 1  | -      | 4                 |
| PreFilter Size 1 | -      | 16X16X2           |

| Test Data          |        |           |
|--------------------|--------|-----------|
|                    | Design | Actual    |
| SF CFM             | 1010   | (1) 1144  |
| SF RPM             | -      | Low Speed |
| RA CFM             | 925    | 1144      |
| OA CFM             | 85     | (2) 0     |
| RL Voltage         | 208    | 214       |
| RL Amperage        | 6.0    | 2.7       |
| OA Damper Position | -      | 0%        |
| Brake Horse Power  | -      | .34       |

| Motor Data     |        |        |
|----------------|--------|--------|
|                | Design | Actual |
| Motor MFG      | -      | Genteq |
| Frame          | -      | NL     |
| Horsepower     | -      | 0.75   |
| Motor Rpm      | -      | 1050   |
| Phase          | -      | 1      |
| Rated Voltage  | -      | 208    |
| Rated Amperage | -      | 6.0    |
| Service Factor | -      | 1      |

| Performance Data |        |        |
|------------------|--------|--------|
|                  | Design | Actual |
| MA Plenum SP     | -      | -0.34" |
| Fan Suction SP   | -      | -0.55" |
| Fan Discharge SP | -      | 0.40"  |
| Total ESP        | -      | 0.74"  |
| Fan Total SP     | -      | 0.95"  |

Completed By: Chistian Moller on 03/25/2025

Notes:

- (1) Speed tap on lowest speed
- (2) OA intake hood not installed

Written By: Scott Springer on 04/01/2025

## Unit Data - PHOTO LOG



03/25/2025

# National TAB

Project: Morton Gettys Law Office (Rock Hill, SC)

## AHU/RTU



**Diffuser Supply (GRD)**

**RTHP-1/258**

| Asset      |          |      |      |            |        |           |             |
|------------|----------|------|------|------------|--------|-----------|-------------|
| Asset Name | Location | Type | Size | DESIGN CFM | CFM(1) | FINAL CFM | % to design |
| 2-1        | 259      | A    | 6    | 100        | 178    | 114       | 114.0       |
| 2-2        | 258      | A    | 8    | 150        | 273    | 156       | 104.0       |
| 2-3        | 258      | A    | 8    | 150        | 119    | 172       | 114.7       |
| 2-4        | 258      | A    | 8    | 150        | 142    | 172       | 114.7       |
| 2-5        | 258      | A    | 8    | 160        | 159    | 184       | 115.0       |
| 2-6        | 258      | A    | 8    | 150        | 159    | 171       | 114.0       |
| 2-7        | 258      | A    | 8    | 150        | 152    | 175       | 116.7       |
| Total      |          |      |      | 1010       | 1182   | 1144      | 113.27%     |

# National TAB

Project: Morton Gettys Law Office (Rock Hill, SC)

## System/Unit: AHU/RTU



Asset: RTU-1

AREA:257

| Unit Data        |          |                   |
|------------------|----------|-------------------|
|                  | Design   | Actual            |
| MFG              | NA       | DAIKIN            |
| Serial Num       | -        | 2409110244        |
| Model Num        | NA       | DFC0603D000029CAA |
| Configuration    | VERTICAL | VERTICAL          |
| Num OA Filters 1 | -        | 1                 |
| OA Filter Size 1 | -        | 16X27.75          |
| Num PreFilter 1  | -        | 2                 |
| PreFilter Size 1 | -        | 25X20X2           |

| Test Data          |        |             |
|--------------------|--------|-------------|
|                    | Design | Actual      |
| SF CFM             | 2000   | 1862        |
| SF RPM (Initial)   | -      | Speed Tap 4 |
| RA CFM             | 1775   | 1625        |
| OA CFM             | 225    | 237         |
| RL Voltage         | 208    | 212         |
| RL Amperage        | 6.9    | 5.7         |
| OA Damper Position | -      | 3.4V/17%    |
| Brake Horse Power  | -      | 0.83        |

| Motor Data     |        |           |
|----------------|--------|-----------|
|                | Design | Actual    |
| Motor MFG      | -      | SELECTECH |
| Frame          | -      | 48Y       |
| Horsepower     | -      | 1         |
| Motor Rpm      | -      | 1200      |
| Phase          | -      | 1         |
| Rated Voltage  | -      | 208       |
| Rated Amperage | -      | 6.9       |
| Service Factor | -      | 1         |

| Performance Data |        |        |
|------------------|--------|--------|
|                  | Design | Actual |
| MA Plenum SP     | -      | -0.44" |
| Fan Suction SP   | -      | -0.69" |
| Fan Discharge SP | -      | 0.40"  |
| Total ESP        | 0.5    | 1.53"  |
| Fan Total SP     | 0.63   | 1.09"  |

Completed By: Antonio Flores-De La Cruz on 03/27/2025

Notes:  
SPEED TAP 4

Written By: Scott Springer on 04/01/2025

# National TAB

Project: Morton Gettys Law Office (Rock Hill, SC)

## AHU/RTU



**Diffuser Supply (GRD)**

**RTU-1/257**

| Asset      |          |      |      |            |        |           |             |
|------------|----------|------|------|------------|--------|-----------|-------------|
| Asset Name | Location | Type | Size | DESIGN CFM | CFM(1) | FINAL CFM | % to design |
| 1-1        | 247      | A    | 8    | 210        | 176    | 190       | 90.5        |
| 1-2        | 245      | A    | 8    | 210        | 135    | 193       | 91.9        |
| 1-4        | 244      | A    | 8    | 190        | 145    | 177       | 93.2        |
| 1-4        | 243      | A    | 8    | 125        | 191    | 118       | 94.4        |
| 1-5        | 249      | A    | 8    | 210        | 117    | 194       | 92.4        |
| 1-6        | 250      | A    | 8    | 150        | 143    | 145       | 96.7        |
| 1-6        | 252      | A    | 8    | 150        | 170    | 147       | 98.0        |
| 1-8        | 253      | A    | 8    | 210        | 158    | 190       | 90.5        |
| 1-9        | 256      | A    | 8    | 125        | 185    | 120       | 96.0        |
| 1-10       | 255      | A    | 8    | 210        | 116    | 193       | 91.9        |
| 1-11       | 257      | A    | 8    | 210        | 196    | 195       | 92.9        |
| Total      |          |      |      | 2000       | 1732   | 1862      | 93.1%       |

Completed By: Antonio Flores-De La Cruz on 03/27/2025

# National TAB

Project: Morton Gettys Law Office (Rock Hill, SC)

System/Unit: AHU/RTU



Asset: (E) AC-5

AREA:

| Unit Data        |        |              |
|------------------|--------|--------------|
|                  | Design | Actual       |
| MFG              | NA     | TRANE        |
| Serial Num       | -      | 15111PXYBA   |
| Model Num        | NA     | TWE0900300AA |
| Type             | -      | AHU          |
| Configuration    | -      | VERTICAL     |
| Num PreFilter 1  | -      | 3            |
| PreFilter Size 1 | -      | 16X25X2      |

| Test Data          |        |             |
|--------------------|--------|-------------|
|                    | Design | Actual      |
| SF CFM             | 2000   | 1869        |
| SF RPM             | -      | 846         |
| RA CFM             | -      | 1556        |
| OA CFM             | 331    | 313         |
| RL Voltage         | 208    | 214/215/214 |
| RL Amperage        | 5.3    | 4.1/4.0/4.1 |
| OA Damper Position | -      | 50%         |
| Brake Horse Power  | -      | 2.7         |

| Motor Data     |        |          |
|----------------|--------|----------|
|                | Design | Actual   |
| Motor MFG      | -      | MARATHON |
| Frame          | -      | 56H      |
| Horsepower     | -      | 1.5      |
| Motor Rpm      | -      | 1725     |
| Phase          | -      | 3        |
| Rated Voltage  | -      | 208      |
| Rated Amperage | -      | 5.3      |
| Service Factor | -      | 1.15     |

| Performance Data |        |        |
|------------------|--------|--------|
|                  | Design | Actual |
| Fan Suction SP   | -      | -0.96" |
| Fan Discharge SP | -      | 0.40"  |
| Fan Total SP     | -      | 1.36"  |

| Drive Data        |        |
|-------------------|--------|
|                   | Actual |
| Motor Sheave Size | 1VP34  |
| Motor Bore Size   | .625"  |
| Fan Sheave Size   | AK64   |
| Fan Sheave Bore   | 1"     |
| Belt CL Distance  | 17.5"  |
| Num of Belts      | 1      |
| Belt Size         | A47    |

Completed By: Antonio Flores-De La Cruz on 03/27/2025

# National TAB

Project: Morton Gettys Law Office (Rock Hill, SC)

## AHU/RTU



**Diffuser Supply (GRD)**

**(E) AC-5/**

| <b>Asset</b>      |                 |             |             |                   |               |                  |                    |
|-------------------|-----------------|-------------|-------------|-------------------|---------------|------------------|--------------------|
| <b>Asset Name</b> | <b>Location</b> | <b>Type</b> | <b>Size</b> | <b>DESIGN CFM</b> | <b>CFM(1)</b> | <b>FINAL CFM</b> | <b>% to design</b> |
| (E) AHU-5-SGRD1   | 240             | A           | 8           | 200               | 182           | 201              | 100.5              |
| (E) AHU-5-SGRD2   | 238             | C           | 6           | 60                | 42            | 58               | 96.7               |
| (E) AHU-5-SGRD3   | 239             | D           | 10          | 210               | 208           | 197              | 93.8               |
| (E) AHU-5-SGRD4   | 239             | D           | 10          | 210               | 202           | 196              | 93.3               |
| (E) AHU-5-SGRD5   | 237             | D           | 10          | 240               | 189           | 225              | 93.8               |
| (E) AHU-5-SGRD6   | 237             | D           | 10          | 240               | 160           | 225              | 93.8               |
| (E) AHU-5-SGRD7   | 235             | D           | 10          | 275               | 147           | 249              | 90.5               |
| (E) AHU-5-SGRD8   | 235             | D           | 10          | 275               | 169           | 248              | 90.2               |
| (E) AHU-5-SGRD9   | 234             | A           | 8           | 145               | 118           | 133              | 91.7               |
| (E) AHU-5-SGRD10  | 234             | A           | 8           | 145               | 125           | 137              | 94.5               |
| <b>Total</b>      |                 |             |             | <b>2000</b>       | <b>1542</b>   | <b>1869</b>      | <b>93.45%</b>      |

# National TAB

Project: Morton Gettys Law Office (Rock Hill, SC)

System/Unit: AHU/RTU



Asset: (E) AC-6

AREA:

| Unit Data        |        |              |
|------------------|--------|--------------|
|                  | Design | Actual       |
| MFG              | NA     | TRANE        |
| Serial Num       | -      | 15083PCRBA   |
| Model Num        | NA     | TWE090D300AA |
| Type             | -      | AHU          |
| Configuration    | -      | VERTICAL     |
| Num PreFilter 1  | -      | 3            |
| PreFilter Size 1 | -      | 16X25X2      |

| Test Data          |        |             |
|--------------------|--------|-------------|
|                    | Design | Actual      |
| SF CFM             | 2700   | 1784        |
| SF RPM             | -      | 835         |
| RA CFM             | 2374   | 1426        |
| OA CFM             | 326    | 358         |
| RL Voltage         | 208    | 214/215/214 |
| RL Amperage        | 5.8    | 3.4/3.3/3.4 |
| OA Damper Position | -      | 65%         |
| Brake Horse Power  | -      | 2.7         |

| Motor Data     |        |          |
|----------------|--------|----------|
|                | Design | Actual   |
| Motor MFG      | -      | MARATHON |
| Frame          | -      | 56H      |
| Horsepower     | -      | 1.5      |
| Motor Rpm      | -      | 1725     |
| Phase          | -      | 3        |
| Rated Voltage  | -      | 208      |
| Rated Amperage | -      | 5.8      |
| Service Factor | -      | 1.15     |

| Performance Data |        |        |
|------------------|--------|--------|
|                  | Design | Actual |
| Fan Suction SP   | -      | -0.96" |
| Fan Discharge SP | -      | 0.31"  |
| Total ESP        | -      | 1.27"  |

| Drive Data        |        |
|-------------------|--------|
|                   | Actual |
| Motor Sheave Size | 1VP34  |
| Motor Bore Size   | 0.625" |
| Fan Sheave Size   | AK64   |
| Fan Sheave Bore   | 1"     |
| Belt CL Distance  | 17.5"  |
| Num of Belts      | 1      |
| Belt Size         | A47    |

Completed By: Antonio Flores-De La Cruz on 03/27/2025

Notes:

(1) Diffusers are balanced proportionally low.

Written By: Scott Springer on 04/01/2025

# National TAB

Project: Morton Gettys Law Office (Rock Hill, SC)

## AHU/RTU



**Diffuser Supply (GRD)**

**(E) AC-6/**

| Asset            |          |      |      |             |             |             |               |
|------------------|----------|------|------|-------------|-------------|-------------|---------------|
| Asset Name       | Location | Type | Size | DESIGN CFM  | CFM(1)      | FINAL CFM   | % to design   |
| (E) AHU-6-SGRD1  | 218      | A    | 8    | 150         | 126         | 99          | 66.0          |
| (E) AHU-6-SGRD2  | 220      | A    | 8    | 150         | 93          | 98          | 65.3          |
| (E) AHU-6-SGRD3  | 210      | A    | 8    | 150         | 100         | 100         | 66.7          |
| (E) AHU-6-SGRD4  | 224      | A    | 8    | 150         | 106         | 106         | 70.7          |
| (E) AHU-6-SGRD5  | 206      | A    | 8    | 150         | 89          | 99          | 66.0          |
| (E) AHU-6-SGRD6  | 216      | A    | 8    | 190         | 148         | 126         | 66.3          |
| (E) AHU-6-SGRD7  | 215      | A    | 8    | 190         | 85          | 127         | 66.8          |
| (E) AHU-6-SGRD8  | 217      | A    | 8    | 120         | 133         | 80          | 66.7          |
| (E) AHU-6-SGRD9  | 217      | A    | 8    | 120         | 112         | 79          | 65.8          |
| (E) AHU-6-SGRD10 | 225      | A    | 8    | 120         | 101         | 77          | 64.2          |
| (E) AHU-6-SGRD11 | 225      | A    | 8    | 150         | 89          | 99          | 66.0          |
| (E) AHU-6-SGRD12 | 227      | A    | 8    | 150         | 92          | 98          | 65.3          |
| (E) AHU-6-SGRD13 | 221      | A    | 8    | 120         | 81          | 81          | 67.5          |
| (E) AHU-6-SGRD14 | 227      | A    | 8    | 150         | 94          | 98          | 65.3          |
| (E) AHU-6-SGRD15 | 229      | A    | 8    | 150         | 92          | 99          | 66.0          |
| (E) AHU-6-SGRD16 | 229      | A    | 8    | 120         | 80          | 80          | 66.7          |
| (E) AHU-6-SGRD17 | 232      | A    | 8    | 120         | 54          | 80          | 66.7          |
| (E) AHU-6-SGRD18 | 233      | A    | 8    | 125         | 51          | 75          | 60.0          |
| (E) AHU-6-SGRD19 | 235      | A    | 8    | 125         | 57          | 83          | 66.4          |
| <b>Total</b>     |          |      |      | <b>2700</b> | <b>1783</b> | <b>1784</b> | <b>66.07%</b> |

Completed By: Antonio Flores-De La Cruz on 03/27/2025

# National TAB

Project: Morton Gettys Law Office (Rock Hill, SC)

System/Unit: AHU/RTU



Asset: (E) AC-7

AREA:

| Unit Data        |        |              |
|------------------|--------|--------------|
|                  | Design | Actual       |
| MFG              | NA     | TRANE        |
| Serial Num       | -      | 15104UNBBA   |
| Model Num        | NA     | TWE090D300AA |
| Type             | -      | AHU          |
| Configuration    | -      | VERTICAL     |
| Num PreFilter 1  | -      | 3            |
| PreFilter Size 1 | -      | 16X25X2      |

| Motor Data     |        |          |
|----------------|--------|----------|
|                | Design | Actual   |
| Motor MFG      | -      | MARATHON |
| Frame          | -      | 56H      |
| Horsepower     | -      | 1.5      |
| Motor Rpm      | -      | 1725     |
| Phase          | -      | 3        |
| Rated Voltage  | -      | 208      |
| Rated Amperage | -      | 5.3      |
| Service Factor | -      | 1.15     |

| Drive Data        |        |
|-------------------|--------|
|                   | Actual |
| Motor Sheave Size | 1VP34  |
| Motor Bore Size   | 0.625" |
| Fan Sheave Size   | AK64   |
| Fan Sheave Bore   | 1"     |
| Belt CL Distance  | 17.5"  |
| Num of Belts      | 1"     |
| Belt Size         | A47    |

| Test Data          |        |             |
|--------------------|--------|-------------|
|                    | Design | Actual      |
| SF CFM             | 1590   | 1620        |
| SF RPM             | 1756   | 847         |
| RA CFM             | 1421   | 1453        |
| OA CFM             | 169    | 167         |
| RL Voltage         | 208    | 214/215/214 |
| RL Amperage        | 5.3    | 3.3/3.2/3.3 |
| OA Damper Position | -      | 50%         |
| Brake Horse Power  | -      | 2.7         |

| Performance Data |        |        |
|------------------|--------|--------|
|                  | Design | Actual |
| Fan Suction SP   | -      | -0.58" |
| Fan Discharge SP | -      | 0.75"  |
| Total ESP        | -      | 1.33"  |

Completed By: Antonio Flores-De La Cruz on 03/27/2025

# National TAB

Project: Morton Gettys Law Office (Rock Hill, SC)

## AHU/RTU



**Diffuser Supply (GRD)**

**(E) AC-7/**

| Asset       |          |      |      |            |        |           |             |
|-------------|----------|------|------|------------|--------|-----------|-------------|
| Asset Name  | Location | Type | Size | DESIGN CFM | CFM(1) | FINAL CFM | % to design |
| AHU-7-SGRD1 | 200      | D    | 10   | 260        | 432    | 259       | 99.6        |
| AHU-7-SGRD2 | 211      | A    | 10   | 260        | 248    | 258       | 99.2        |
| AHU-7-SGRD3 | 207      | A    | 10   | 260        | 320    | 268       | 103.1       |
| AHU-7-SGRD4 | 203      | A    | 10   | 260        | 328    | 273       | 105.0       |
| AHU-7-SGRD5 | 202      | A    | 8    | 170        | 158    | 169       | 99.4        |
| AHU-7-SGRD6 | 200      | D    | 8    | 140        | 127    | 148       | 105.7       |
| AHU-7-SGRD7 | 001      | F    | 6    | 100        | 50     | 97        | 97.0        |
| AHU-7-SGRD8 | 200      | D    | 8    | 140        | 156    | 148       | 105.7       |
| Total       |          |      |      | 1590       | 1819   | 1620      | 101.89%     |

# National TAB

Project: Morton Gettys Law Office (Rock Hill, SC)

System/Unit: Split Sys Furnace



Asset: (E) AC-8

AREA:

| Unit Data          |        |                 |
|--------------------|--------|-----------------|
|                    | Design | Actual          |
| MFG                | NA     | TRANE           |
| Model Num          | NA     | 4TEC3F42C1000AA |
| Serial Num         | -      | 8325PFK1V       |
| Configuration      | -      | HORIZONTAL      |
| Filter Size Size 1 | -      | 20X20X1         |

| Motor Data |        |        |
|------------|--------|--------|
|            | Design | Actual |
| Motor MFG  | -      | NA     |
| Frame      | -      | NL     |
| Horsepower | -      | 0.5    |
| Motor Rpm  | -      | 1725   |
| Phase      | -      | 1      |
| Voltage    | -      | 208    |
| Amperage   | -      | 3.3    |

| Test Data         |        |            |
|-------------------|--------|------------|
|                   | Design | Actual     |
| SF CFM            | 1200   | 1278       |
| Motor Speed SetPt | -      | C / MED-HI |
| RL Voltage        | 208    | 214        |
| RL Amperage       | 3.3    | 2.7        |
| RA CFM            | 1136   | 1211       |
| OA CFM            | 64     | 67         |

| Performance Data |        |        |
|------------------|--------|--------|
|                  | Design | Actual |
| Suction ESP      | -      | -0.35" |
| Discharge ESP    | -      | 0.21"  |
| Total ESP        | -      | 0.56"  |

Completed By: Antonio Flores-De La Cruz on 03/26/2025

# National TAB

Project: Morton Gettys Law Office (Rock Hill, SC)

## Split Sys Furnace



**Diffuser Supply (GRD)**

**(E) AC-8/**

| <b>Asset</b>      |                 |             |             |                   |               |                  |                    |
|-------------------|-----------------|-------------|-------------|-------------------|---------------|------------------|--------------------|
| <b>Asset Name</b> | <b>Location</b> | <b>Type</b> | <b>Size</b> | <b>DESIGN CFM</b> | <b>CFM(1)</b> | <b>FINAL CFM</b> | <b>% to design</b> |
| (E) AC-8-SGRD1    | 214             | A           | 8           | 200               | 185           | 211              | 105.5              |
| (E) AC-8-SGRD2    | 214             | A           | 8           | 200               | 213           | 213              | 106.5              |
| (E) AC-8-SGRD3    | 213             | A           | 8           | 200               | 239           | 212              | 106.0              |
| (E) AC-8-SGRD4    | 213             | A           | 8           | 200               | 191           | 214              | 107.0              |
| (E) AC-8-SGRD5    | 212             | A           | 8           | 200               | 157           | 213              | 106.5              |
| (E) AC-8-SGRD6    | 212             | A           | 8           | 200               | 168           | 215              | 107.5              |
| <b>Total</b>      |                 |             |             | 1200              | 1153          | 1278             | 106.5%             |

# National TAB

Project: Morton Gettys Law Office (Rock Hill, SC)

## System/Unit: FAN - Exhaust



Asset: EF-1

AREA:215

| Unit Data  |         |            |
|------------|---------|------------|
|            | Design  | Actual     |
| MFG        | NA      | GREENHECK  |
| Model Num  | NA      | SP-A390-VG |
| Serial Num | -       | 25035916   |
| Type       | CEILING | CEILING    |

| Test Data   |        |                |
|-------------|--------|----------------|
|             | Design | Actual         |
| CFM         | 210    | 213            |
| Fan RPM     | -      | 5.5 speed dial |
| RL Voltage  | 115    | 120            |
| RL Amperage | 1.5    | 0.83           |
| Total ESP   | 0.5    | 0.21"          |

| Motor Data       |        |           |
|------------------|--------|-----------|
|                  | Design | Actual    |
| Motor MFG        | -      | VARIGREEN |
| Frame            | -      | NL        |
| Horsepower       | -      | 0.10      |
| Motor Rpm        | 1266   | 1750      |
| Phase            | 1      | 1         |
| Voltage (rated)  | 115    | 115       |
| Amperage (rated) | -      | 1.5       |
| Service Factor   | -      | 1         |

Completed By: Antonio Flores-De La Cruz on 03/26/2025

# National TAB

Project: Morton Gettys Law Office (Rock Hill, SC)

## System/Unit: FAN - Exhaust



Asset: EF-2

AREA:MENS RR

| Unit Data  |         |            |
|------------|---------|------------|
|            | Design  | Actual     |
| MFG        | NA      | GREENHECK  |
| Model Num  | NA      | SP-A390-VG |
| Serial Num | -       | 25035890   |
| Type       | CEILING | CEILING    |

| Test Data   |        |                |
|-------------|--------|----------------|
|             | Design | Actual         |
| CFM         | 210    | 215            |
| Fan RPM     | -      | 5.5 speed dial |
| RL Voltage  | 115    | 120            |
| RL Amperage | 1.5    | 0.83           |
| Total ESP   | 0.5    | 0.24"          |

| Motor Data       |        |           |
|------------------|--------|-----------|
|                  | Design | Actual    |
| Motor MFG        | -      | VARIGREEN |
| Frame            | -      | NL        |
| Horsepower       | -      | 0.10      |
| Motor Rpm        | 1266   | 1750      |
| Phase            | 1      | 1         |
| Voltage (rated)  | 115    | 115       |
| Amperage (rated) | -      | 1.5       |
| Service Factor   | -      | 1         |

Completed By: Antonio Flores-De La Cruz on 03/26/2025

# National TAB

Project: Morton Gettys Law Office (Rock Hill, SC)

## System/Unit: FAN - Exhaust



Asset: EF-3

AREA:240

| Unit Data         |         |               |
|-------------------|---------|---------------|
|                   | Design  | Actual        |
| <b>MFG</b>        | NA      | GREENHECK     |
| <b>Model Num</b>  | NA      | SP-A90-130-VG |
| <b>Serial Num</b> | -       | 25035930      |
| <b>Type</b>       | CEILING | Ceiling       |

| Test Data          |        |                |
|--------------------|--------|----------------|
|                    | Design | Actual         |
| <b>CFM</b>         | 120    | 122            |
| <b>Fan RPM</b>     | -      | 3.5 speed dial |
| <b>RL Voltage</b>  | 115    | 120            |
| <b>RL Amperage</b> | 1.5    | 0.55           |
| <b>Total ESP</b>   | 0.5    | 0.16"          |

| Motor Data              |        |           |
|-------------------------|--------|-----------|
|                         | Design | Actual    |
| <b>Motor MFG</b>        | -      | GREENHECK |
| <b>Frame</b>            | -      | CCW       |
| <b>Horsepower</b>       | -      | 0.10      |
| <b>Motor Rpm</b>        | 1041   | 1750      |
| <b>Phase</b>            | 1      | 1         |
| <b>Voltage (rated)</b>  | 115    | 115       |
| <b>Amperage (rated)</b> | -      | 1.5       |
| <b>Service Factor</b>   | -      | 1         |

Completed By: Chistian Moller on 03/25/2025