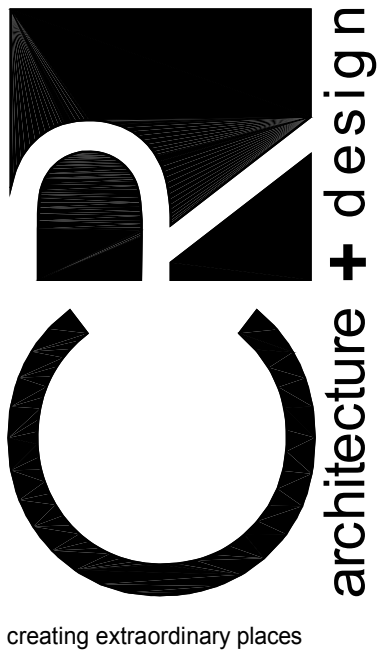




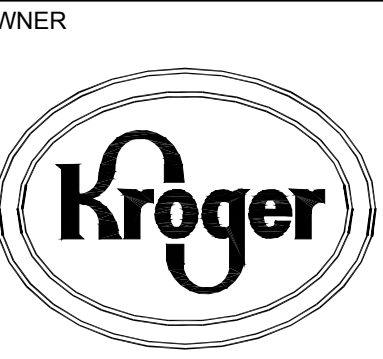
CONSULTANT: 6501 W. Loop West, Suite 2710, Channahon, IL 61610, P. 815.721.8888
 DESIGNER: 1810 Maple Street, Denver, CO 80202, P. 303.863.8100
 DALLAS: 750 North St Paul Street, Suite 450, Dallas, TX 75201, P. 800.469.4949
 SEATTLE: 2211 Elliott Ave, Suite 241, Seattle, WA 98121, P. 800.469.4949



creating extraordinary places
 www.cr-architects.com
 800.469.4949

CONSULTANTS

KOHR'S LONNEMANN HEIL
 ENGINEERS, PSC
 MECHANICAL/ELECTRICAL ENGINEERS
 K L H
 Cincinnati Dayton Columbus
 1538 Alexandria Pike, Suite 11 | Fort Thomas, KY 41075 P. 959.446.8000
 104 Brown Street | Dayton, OH 45402 V. 937.232.9700
 1115 North Hill Street, Suite 200 | Columbus, OH 43215 V. 614.221.1210



ISSUE/REVISION
 04/22/2014 90% OWNER REVIEW
 05/16/2014 BID/PERMIT ISSUE

PROJECT TITLE
KROGER STORE SW572
 FM 407 & McKin Road
 Bartonville, TX 78704

COMMISSION NO. 514040
 ISSUE DATE 05/16/14

SHEET TITLE
HVAC ROOF PLAN

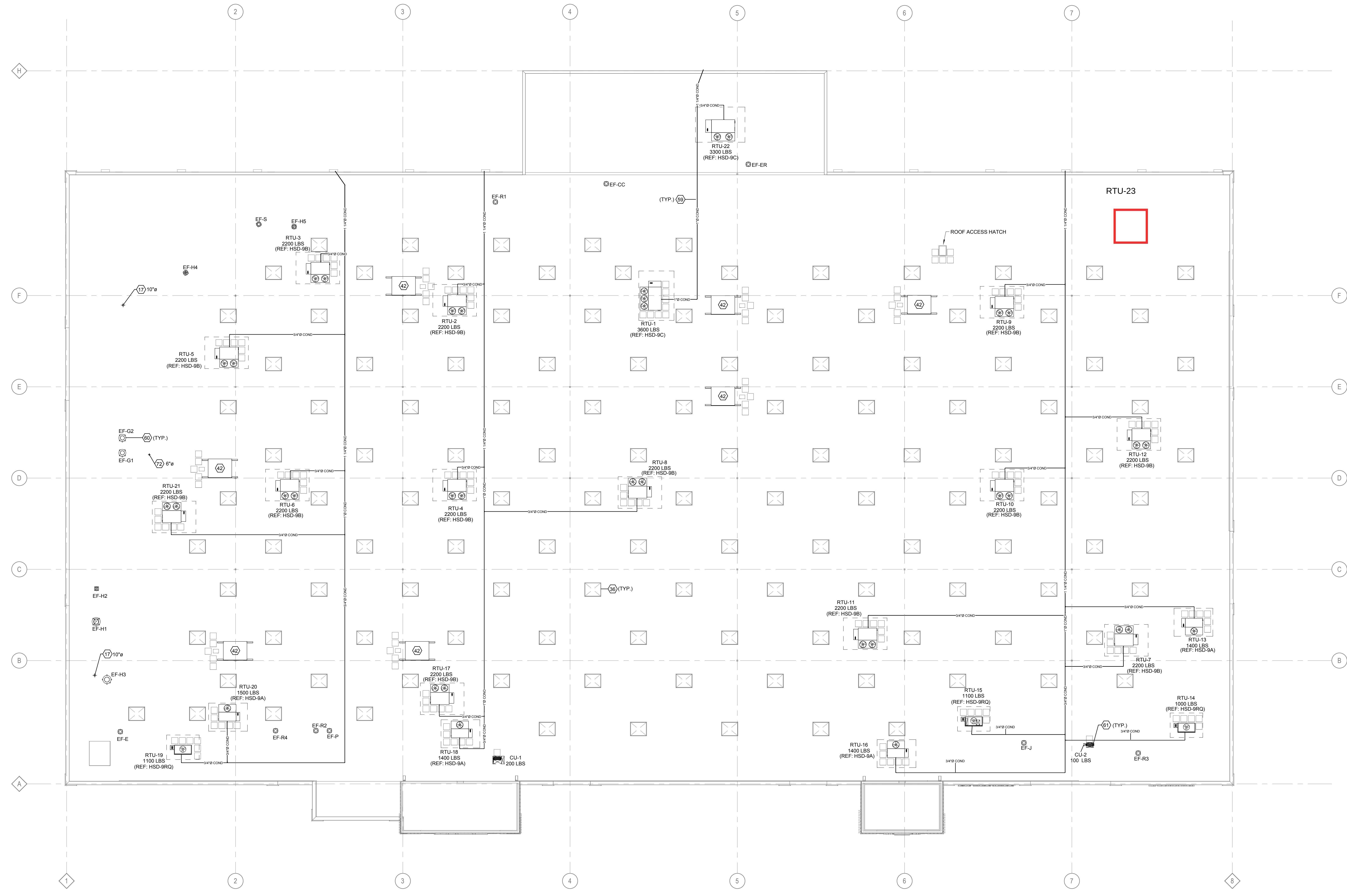
SHEET NO.
M1.2
 © 2014 Cole+Russell Architects, Inc.

GENERAL NOTES

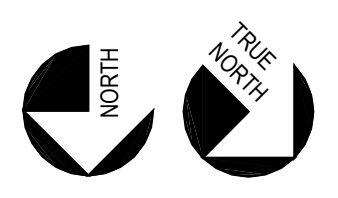
- A. REFER TO HEATING, VENTILATING & AIR CONDITIONING SPECIFICATIONS AND GENERAL CONDITIONS FOR ADDITIONAL REQUIREMENTS.
- B. ALL DIFFUSERS AND CEILING GRILLES SHALL BE COORDINATED WITH LAY-IN CEILING GRID AND PROVIDED BY MECHANICAL CONTRACTOR. SEE SCHEDULE SHEET M6.1.
- C. PROVIDE BALANCING DAMPERS FOR EACH DIFFUSER, REGISTER AND GRILLE AT POINTS ON SUPPLY, RETURN, AND EXHAUST SYSTEMS WHERE BRANCHES LEAD OFF FROM LARGER DUCTS OR IN DIFFUSERS AS REQUIRED FOR AIR BALANCING. INSTALL AT A MINIMUM OF TWO DUCT WIDTHS FROM BRANCH TAKEOFF WHERE PRACTICAL. REFER TO HD-25 ON SHEET M3.1.
- D. NO PROVISION HAS BEEN MADE FOR RETURN AIR FROM THE BACK ROOM AS IT HAS BEEN OUR EXPERIENCE THAT ACCEPTABLE CONSTRUCTION TOLERANCES IN THIS AREA RESULTS IN LEAKAGE IN AN AMOUNT EQUAL TO THAT SUPPLIED.
- E. ALL NEW EXHAUST FANS AND RTUS SPECIFIED ARE INCLUDED IN OWNER'S DIRECT BUY PROGRAM AND SHALL BE PROVIDED BY OWNER AND INSTALLED BY HVAC CONTRACTOR, UNLESS OTHERWISE NOTED.
- F. ALL HVAC DUCT SMOKE DETECTORS ARE SHOWN ON ELECTRICAL SYSTEMS PLAN.
- G. REFER TO RTU SCHEDULE SHEET M6.1 FOR ROOFTOP UNIT INFORMATION.
- H. PROVIDE AND INSTALL BACKDRAFT DAMPERS FOR NON-KITCHEN EXHAUST FANS. SEE SPECIFICATIONS FOR ADDITIONAL INFORMATION.
- I. THE STORE'S MECHANICAL DESIGN SHALL BE ELIGIBLE TO EARN ENERGY STAR CERTIFICATION.
- J. SUPPLY AND RETURN DUCTWORK FROM ROOFTOP UNITS TO BE INTERNALLY INSULATED A MINIMUM OF TEN FEET FOR SOUND ATTENUATION. SEE DETAIL HSD-3, SHEET M5.1.
- K. REFER TO ROOFTOP UNIT CURB DETAILS, SHEET M5.1 FOR ROOFTOP UNIT CURB INSTALLATION.
- L. PROVIDE TURNING VANES IN ALL RECTANGULAR MITERED ELBOWS. ONLY ITEMS REQUIRED FOR THE OPERATION OF THE ELEVATOR ARE ALLOWED TO BE IN OR PASS THROUGH THE ELEVATOR EQUIPMENT ROOM.
- M. ALL DIFFUSERS ARE 4-WAY UNLESS OTHERWISE INDICATED. REFER TO HD-4 ON SHEET M3.1.
- N. RUNOUTS TO CEILING DIFFUSERS ARE THE SAME SIZE AS THE DIFFUSER NECK UNLESS NOTED OTHERWISE.
- P. REFER TO RTU WIND SEISMIC RESTRAINT BRACKET DETAIL HSD-10 ON SHEET M5.1.

KEYED NOTES

- 17. UV-SO VENT KIT INCLUDED WITH UNIT AND SUPPLIED BY HOBART. VENT KIT AUTOMATICALLY REMOVES STEAM/CONDENSATION AT THE COMPLETION OF THE WAREWASH CYCLE. WAREWASH DOOR WILL NOT OPEN UNTIL THIS PROCESS IS COMPLETED. MECHANICAL CONTRACTOR TO CONNECT A 10" STAINLESS STEEL DUCT TO THE VENT KIT OPENING THRU ROOF AND TO TERMINATE THE END OF THE DUCT WITH AN ELL. REFER TO DETAIL HSD-8 SHEET M5.1.
- 36. SKYLIGHT SHOWN FOR COORDINATION.
- 42. ROOF MOUNTED REFRIGERATION CONDENSER SHOWN FOR COORDINATION PURPOSES.
- 59. REFER TO PIPING SUPPORT DETAIL HD-17 ON SHEET M3.1 (TYP).
- 60. REFER TO UPPLAST EXHAUST FAN DETAIL HD-15 ON SHEET M3.1 (TYP).
- 61. REFER TO REFRIGERANT PIPING DETAIL HD-18 ON SHEET M3.1 (TYP).
- 72. 6" STAINLESS STEEL DUCT, NATURAL DRAFT, PER NFPA 96 FOR TORTILLA MACHINE THRU ROOF. TERMINATE PER MANUFACTURER'S INSTRUCTIONS.



HVAC ROOF PLAN
 SCALE: 1/16" = 1'-0"



THIS DOCUMENT IS THE PRODUCT AND EXCLUSIVE PROPERTY OF COLE+RUSSELL ARCHITECTS, INC. NEITHER THE DOCUMENT NOR THE INFORMATION IT CONTAINS MAY BE COPIED OR USED FOR OTHER THAN THE SPECIFIC PROJECT FOR WHICH IT WAS PREPARED WITHOUT THE EXPLICIT CONSENT OF COLE+RUSSELL ARCHITECTS, INC.
 5/16/2014 2:08:12 PM