

**Report By:**

National TAB  
1329 E. KEMPER ROAD  
SUITE 4210  
CINCINNATI, OH 45246



**Report: TAB**

**Function: Test, Adjust, & Balance**

**Date: 05/06/2025**

**Completed By: National TAB**

# **PROJECT**

**05-05-25 SWEETGREEN SANTA CLARA, CA  
(TAB, IAQ)**

2532 Augustine Drive

SANTA CLARA , CA 95054

## **Client**

OMAK Construction

7269 32nd ST

North Highlands, CA 95660

# National TAB

Project: 05-05-25 SWEETGREEN SANTA CLARA, CA (TAB, IAQ)

## Table Of Contents

Section	Page #
SUMMARY	3
REMARKS	4
BALANCE SCHEDULE	6
Checklist Data	7
GRD LAYOUT	21
AHU/RTU	22
FAN - Exhaust	33
FAN - Supply	36



# National TAB

## Project Summary

The summary below provides a quick understanding of our scope of work and general testing procedures. Enclosed in the report are further details about your building performance including recommendations, asset data, and pictures. Our focus is to work with the trades to remedy any issues or deficiencies during the actual field balancing and not after the balancing has occurred to achieve a positive environment and outcome. The level of success is determined by the availability of the trades, possible parts needed, or time constraints.

### AHU's w/ Diffusers

Each of the AHU's were measured at their terminal devices or via traverse to establish a total flow for that unit. Each AHU was adjusted to within tolerance of the engineer's design flow. Each outlet was then adjusted to within tolerance of the design flow. If provided with outside air, the flow was measured via traverse. The outside air damper was adjusted until the airflow was within the design requirements. Any equipment that fell outside of that tolerance is noted throughout the report.

### General Exhaust Fan

The general exhaust fans were measured by reading each air device with a flow hood. The total airflow for each fan is equivalent to the sum of these readings. Fan speed was then adjusted so that the airflow was within tolerance of design. Each terminal device was balanced to within tolerance of the design volume using the installed volume dampers. Any equipment that fell outside of this tolerance is noted throughout the report.

### Final Building Tests

After completing the test and balance the final building pressure was measured. It was confirmed that the building pressure fell within acceptable tolerances of  $-0.02''$  wc to  $+0.02''$  wc and that the pressure measurement coincides with the actual and design net airflow. Any deviations from these standards are noted throughout the report.

## Issue List

- LOW AIRFLOW UNITS AHU- 1THROUGH 3



**05-05-25 SWEETGREEN SANTA CLARA, CA (TAB, IAQ)**

**Project Issue Information**

**Issue Name :** LOW AIRFLOW UNITS AHU- 1THROUGH 3  
**Description :** AHU-1 and 2 are both unable to meet design airflows of 2000CFM AHU-1 and 2 are at 1780 and 1769 respectively.  
**Created By :** National TAB                      **Assigned To :** National TAB - Brianna Biggs  
**Status :** Open  
**Priority :** High                                      **Asset Tag :**  
**Originated Date :** 05/06/2025 - Zack Eismin - National TAB

### AIR BALANCE SCHEDULE

UNIT	AREA SERVED	HVAC SUPPLY		HVAC RETURN		HVAC OUTDOOR		OA %		HOOD MAKE-UP		HOOD EXHAUST		GENERAL EXH.	
		DESIGN	ACTUAL	DESIGN	ACTUAL	DESIGN	ACTUAL	DESIGN	ACTUAL	DESIGN	ACTUAL	DESIGN	ACTUAL	DESIGN	ACTUAL
AHU1	BOH KITCHEN	2000	1780	1800	1591	200	189	10.0%	10.6%						
AHU2	FOH KITCHEN	2000	1769	1800	1576	200	193	10.0%	10.9%						
AHU3	DINING	2000	2010	1280	1329	720	681	36.0%	33.9%						
AHU4	DINING	1200	1219	770	828	430	391	35.8%	32.1%						
EF-1	KITCHEN HOOD											1350	1352		
EF-2	RESTROOMS													300	289
<b>TOTALS</b>		7200	6778	5650	5324	1550	1454			0	0	1350	1352	300	289

#### NET BUILDING AIRFLOW CALCULATION

TOTALS	DESIGN	ACTUAL
TOTAL OA	1550	1454
TOTAL EXHAUST	1650	1641
<b>NET AIRFLOW</b>	<b>-100</b>	<b>-187</b>

DOOR TESTED	BUILDING PRESSURE MEASUREMENTS (IN. H <sub>2</sub> O)
FRONT	-0.0189
SIDE	
REAR	-0.0193
<b>AVERAGE</b>	<b>-0.0191</b>

#### FINAL CHECKS

- ACTUAL NET AIRFLOW COINCIDES WITH DESIGN: ✓

---

- MEASURED PRESSURES COINCIDES WITH ACTUAL NET AIRFLOW: ✓

---

- PRESSURE FALLS WITHIN IMC TOLERANCE OF +/-0.02" W.C. ✓

NOTES:

## CheckList List

- STEP 1: INITIAL WALKTHROUGH
- STEP 2: UNIT DATA AND EVA
- STEP 3: TEST, ADJUST AND BALANCE
- STEP 4: FINAL TESTS
- STEP4B: HOOD EVALUATION



05-05-25 SWEETGREEN SANTA CLARA, CA (TAB, IAQ)

CheckList Information

**Name :** STEP 1: INITIAL WALKTHROUGH      **Status :** Not Completed

**Assigned Organization :** National TAB      **Asset :**

**Requesting Organization :** National TAB

**Created Date :** 04/24/2025 - Tara Metcalf - National TAB

CheckList Item Details

INITIAL SITE WALKTHROUGH

Review Plan Review Checklist, has it been signed off and meets our standards to start balancing? If not contact processor to ensure job is ready.

**Comment:**

YES

All diffusers and grilles are installed and match design?

**Comment:**

YES

All hood filters installed and accounted for?

**Comment:**

N/A

Hoods are wired and have power?

**Comment:**

N/A

Hood is free of alarms?

**Comment:**

N/A

Thermostats have power?

**Comment:**

YES

---

**Have trades/general contractor been notified about any issues and are they created on FaciliBuild?**

**Comment:**

YES



05-05-25 SWEETGREEN SANTA CLARA, CA (TAB, IAQ)

**CheckList Information**

**Name :** STEP 2: UNIT DATA AND EVA **Status :** Completed

**Assigned Organization :** National TAB **Asset :**

**Requesting Organization :** National TAB

**Created Date :** 04/24/2025 - Tara Metcalf - National TAB

**Completed Date :** 05/06/2025 - Zack Eismin - National TAB

**CheckList Item Details**

UNIT DATA AND EVALUATION WHILE GATHERING UNIT DATA CHECK THE FOLLOWING:

RTU's/AHU's

**Economizers are assembled and functional?**

**Comment:**

NO, EXISTING UNITS DO NOT HAVE OA DAMPERS OR ECONOMIZERS. SEE ISSUES.

**DCV Max damper opening position is set to minimum?**

**Comment:**

N/A

**Free cooling enthalpy set point set for lowest setting (Typically "D")**

**Comment:**

N/A

**Motors are all operating below the FLA rating?**

**Comment:**

YES

**Are belts tight?**

**Comment:**

N/A

If direct drive unit is the speed controller working.

Comment:

YES

Is gas piping installed and valves turned on?

Comment:

N/A

Unit free of noticeable noise and vibration

Comment:

YES

EF's

Rotation is correct?

Comment:

YES

Belts are tight?

Comment:

YES

Grease cup installed on hood fan?

Comment:

NO

Hinge kit installed installed on hood fan?

Comment:

NO

Lean fan back. Is grease duct installation adequate and is duct ran all the way to the base of the fan?

Comment:

YES

Flex conduit is long enough so that fan can be completely tilted back?

Comment:

YES

There is no major leakage around base of fan?

**Comment:**

YES

---

**Is the motor operating below the motor FLA rating?**

**Comment:**

YES

---

**For restroom fan(s) is the back draft damper installed and can it fully open?**

**Comment:**

YES

---

**Unit free of noticeable noise and vibration?**

**Comment:**

YES

---

**MUA**

---

**Rotation is correct?**

**Comment:**

N/A

---

**Gas piping is installed and valves are in on position?**

**Comment:**

N/A

---

**Heater tested and is functional?**

**Comment:**

N/A

---

**Internal motorized damper is fully opening?**

**Comment:**

N/A

---

**Motor is operating below the FLA rating?**

**Comment:**

N/A

---

**Unit free of noticeable noise and vibration?**

**Comment:**

N/A

---

**HOODS**

---

**Kitchen equipment installed in proper places?**

**Comment:**

N/A

---

**Can kitchen equipment be turned on for final smoke test?**

**Comment:**

YES

---

**DOCUMENTATION**

---

**Have trades/general contractor been notified about any issues and are they created on FaciliBuild?**

**Comment:**

YES

---

**AIR PURIFICATION INSPECTION**

N/A

**Comment:**

---

**PHI Air purifiers are installed?**

**Comment:**

N/A

---

**Are they installed after the evaporator coil or in the supply duct?**

**Comment:**

N/A

---

**Are they powered?**

**Comment:**

N/A

---

**If PKG installed inside of the blower compartment, is the wiring exposed to UV light protected with split loom or conduit?**

**Comment:**

N/A

---

**If Reme Halo, is it installed so that the air flow arrow is pointing correct direction?**

**Comment:**

N/A

---

**Is a UV warning sticker installed?**

---

**Comment:**

N/A

---

**Take picture of each air purifier and include in the report**

---

**Comment:**

N/A

---



05-05-25 SWEETGREEN SANTA CLARA, CA (TAB, IAQ)

CheckList Information

**Name :** STEP 3: TEST, ADJUST AND BALANCE      **Status :** Not Completed

**Assigned Organization :** National TAB      **Asset :**

**Requesting Organization :** National TAB

**Created Date :** 04/24/2025 - Tara Metcalf - National TAB

CheckList Item Details

TEST, ADJUST, AND BALANCE ALL EQUIPMENT:

DURING TESTING MAKE NOTE OF THE FOLLOWING:

Is space free of drafting?

Comment:

YES

Is space comfortable in all areas?

Comment:

YES

Is the space free of ventilation noise?

Comment:

YES

If deviations from design were necessary to resolve 1-3 what were they? Otherwise put "NA".

Comment:

N/A



05-05-25 SWEETGREEN SANTA CLARA, CA (TAB, IAQ)

CheckList Information

**Name :** STEP 4: FINAL TESTS **Status :** Completed

**Assigned Organization :** National TAB **Asset :**

**Requesting Organization :** National TAB

**Created Date :** 04/24/2025 - Tara Metcalf - National TAB

**Completed Date :** 05/06/2025 - Zack Eismin - National TAB

CheckList Item Details

**FINAL TESTS**

**HOOD CAPTURE TEST**

**List equipment turned on for testing**

**Comment:**

OVEN

**List smoke candle type used**

**Comment:**

45 SECONDS

**Smoke test capture - Perimeter of hood**

**Comment:**

100%

**Smoke test capture - Top of cooking surface**

**Comment:**

100%

**WITNESS**

**Date test was completed**

Yes

**Comment:**

---

**TAB tech name / Firm**

**Comment:**

ZACK / NATIONAL TAB

---

**Site super name / Firm**

**Comment:**

CHRIS / GRAY WEST

---

**Owner representative name / Firm (if Applicable)**

N/A

**Comment:**

---

**Building pressure at front & back doors (All Systems On)**

Yes

**Comment:**

-0.046"

---

**ADDITIONAL**

---

**Do actual net building airflow, design net building airflow, and pressure coincide? If not why? (All three should either be positive or negative)**

**Comment:**

YES

---

**Thermostats are programmed?**

**Comment:**

YES



05-05-25 SWEETGREEN SANTA CLARA, CA (TAB, IAQ)

CheckList Information

**Name :** STEP4B: HOOD EVALUATION **Status :** Completed

**Assigned Organization :** National TAB **Asset :**

**Requesting Organization :** National TAB

**Created Date :** 04/24/2025 - Tara Metcalf - National TAB

**Completed Date :** 05/06/2025 - Zack Eismin - National TAB

CheckList Item Details

HOOD AND OVEN EVALUATION

Is the oven covered by a hood?

**Comment:**

NO

What is the hood overhang over the front of the hood?

**Comment:**

N/A

What is hood overhang over the left and right sides of the oven?

**Comment:**

N/A

If vertical end panels are specified, are they installed?

**Comment:**

N/A

SMOKE TEST AT HOOD

**Comment:**

N/A

If oven is capable of turning on, it is required to be turned on for smoke test. Was oven on for smoke test?

**Comment:**

YES

---

**Smoke test the oven at the flue on the top of the hood - Capture %?**

**Comment:**

100%

---

**Smoke test the oven at perimeter of the oven - capture %?**

**Comment:**

100%

---

**Smoke test the oven at the perimeter of the hood - capture %?**

**Comment:**

N/A

---

**IF NO HOOD IS INSTALLED ABOVE THE OVEN**

---

**If no hood is installed above the oven, and it is only a grille, smoke test at the top of the oven at the flue and note the capture %. If smoke capture is very poor, hold the candle up by the grille after a few seconds so that the smoke alarms don't get set off.**

**Comment:**

100% CAPTURE

---

**SMOKE TEST AT OVEN**

---

**Confirm that the internal fan turns on as you open the oven door?**

**Comment:**

100%

---

**Smoke test at the oven doors as you are opening the door - capture %?**

**Comment:**

100%

---

**Smoke test at the oven doors when the doors are shut - capture %?**

**Comment:**

100%

---

**EXHAUST DISCHARGE AND OA INTAKES**

---

**Identify where the exhaust air is discharged and take pictures**

---

**Comment:**



**05/06/2025**

---

**Are there any outside air intakes nearby that would be able to re-entrain the exhaust smoke? Take pictures**

**Comment:**

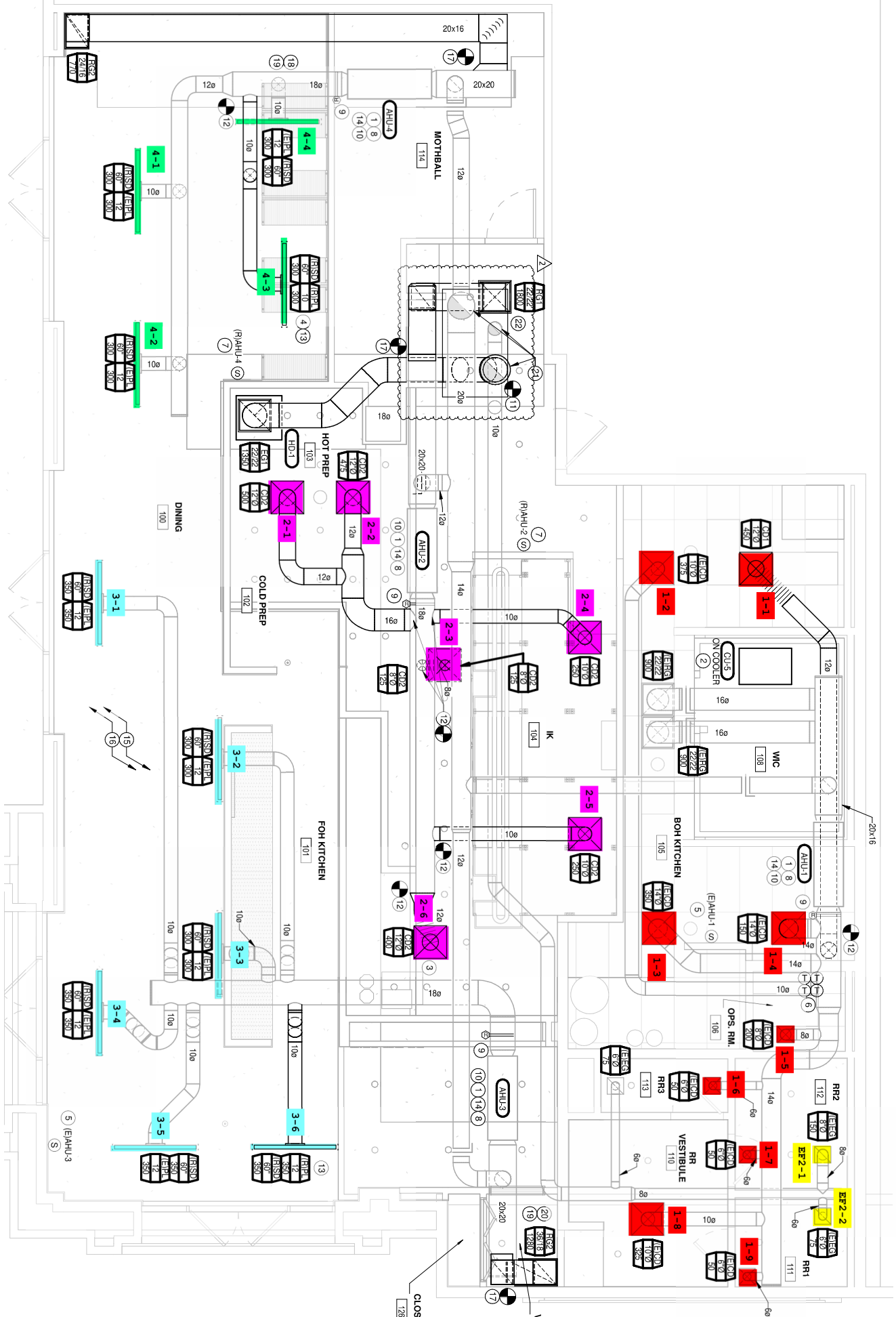
NO

---

**Are there any building entrances or windows near the exhaust discharge where smoke that will cause smoke to enter unwanted spaces?**

**Comment:**

NO



# National TAB

Project: 05-05-25 SWEETGREEN SANTA CLARA, CA (TAB, IAQ)



## System/Unit: AHU/RTU

Asset: AHU1

AREA: KITCHEN

Unit Data		
	Design	Actual
MFG	LENNOX	LENNOX
Serial Num	-	1617L01745
Model Num	CBX27UH-060	CBX27UH-60-460-6-02
Type	AHU	AHU
Configuration	VERTICAL	VERTICAL
Num OA Filters 1	-	N/A
OA Filter Size 1	-	N/A
Num Final Filter 1	-	1
Final Filter Size 1	-	20X24X1
Num Final Filter 2	-	
Final Filter Size 2	-	

Motor Data		
	Design	Actual
Motor MFG	-	NL
Frame	-	NL
Horsepower	-	1
Motor Rpm	-	NL
Phase	3	3
Rated Voltage	480	480
Rated Amperage	-	4

Drive Data	
	Actual
Motor Sheave Size	DD
Motor Bore Size	DD
Motor Sheave SetPt	DD
Fan Sheave Size	DD
Fan Sheave Bore	DD
Belt CL Distance	DD
Num of Belts	DD
Belt Size	DD
Belt Alignment	DD

Test Data		
	Design	Actual
SF CFM	2000	1780
SF RPM	-	HIGH SPEED
RA CFM	1800	1591
OA CFM	200	189
RL Voltage	-	485/485/485
RL Amperage	-	2.95/2.93/2.93
SF Rotation	-	CCW
SF System SetPt	-	HIGH SPEED
RA Damper Position	-	100%
Min OA Damper Position	-	~30%
Min OA Damper Type	-	MANUAL DAMPER
OA Enthalpy Setpt	-	N/A

Performance Data		
	Design	Actual
MA Plenum SP	-	-0.31"
Fan Suction SP	-	-0.53"
Fan Discharge SP	-	0.47"
Total ESP	0.80"	0.78"
Fan Total SP	-	1.0"

General	
	Actual
Fan Rotation Correct	YES
Unit Filters Clean	YES
Condensate Drain Installed	YES

Completed By: Zack Eismin on 05/06/2025

Notes:  
UNIT IS UNABLE TO MEET DESIGN CURRENTLY 1780 / 2000 CFM

Written By: Zack Eismin on 06/30/2025

**Unit Data - PHOTO LOG**



**05/06/2025**

# National TAB

Project:05-05-25 SWEETGREEN SANTA CLARA, CA (TAB, IAQ)

## AHU/RTU



### Diffuser Supply (GRD)

#### AHU1/KITCHEN

Asset									
Asset Name	Location	Type	Size	DESIGN CFM	AK	CFM(1)	CFM(2)	FINAL CFM	% to design
SGRD1	KITCHEN	CD1	12"	450	1	239	283	391	86.9
SGRD2	KITCHEN	ECD	12"	375	1	180	182	334	89.1
SGRD3	BOH KITCHEN	CD	14"	350	1	266	238	317	90.6
SGRD4	BOH KITCHEN	CD	14"	150	1	258	278	128	85.3
SGRD5	OPS RM	CD	6"	200	1	66	69	191	95.5
SGRD6	RR3	CD	6"	50	1	49	57	44	88.0
SGRD7	RR	CD	6"	50	1	17	22	42	84.0
SGRD8	RR3	CD	10"	325	1	204	220	281	86.5
SGRD9	RR VESTIBLE	CD	6"	50	1	56	66	52	104.0
Total				2000		1335	1415	1780	89%

Completed By: Zack Eismin on 05/06/2025

# National TAB

Project: 05-05-25 SWEETGREEN SANTA CLARA, CA (TAB, IAQ)



## System/Unit: AHU/RTU

Asset: AHU2

AREA: KITCHEN

Unit Data		
	Design	Actual
MFG	LENNOX	LENNOX
Serial Num	-	1617L01744
Model Num	CBX27UH-060	CBX27UH-60460-6-02
Type	AHU	AHU
Configuration	VERTICAL	VERTICAL
Num OA Filters 1	-	N/A
OA Filter Size 1	-	N/A
Num Final Filter 1	-	1
Final Filter Size 1	-	20X24X1
Num Final Filter 2	-	
Final Filter Size 2	-	

Motor Data		
	Design	Actual
Motor MFG	-	NL
Frame	-	NL
Horsepower	-	1
Motor Rpm	-	NL
Phase	3	3
Rated Voltage	480	480
Rated Amperage	-	4

Drive Data	
	Actual
Motor Sheave Size	DD
Motor Bore Size	DD
Motor Sheave SetPt	DD
Fan Sheave Size	DD
Fan Sheave Bore	DD
Belt CL Distance	DD
Num of Belts	DD
Belt Size	DD
Belt Alignment	DD

Test Data		
	Design	Actual
SF CFM	2000	1769
SF RPM	-	HIGH SPEED
RA CFM	1800	1576
OA CFM	200	193
RL Voltage	-	484/484/484
RL Amperage	-	2.9/2.9/2.9
SF Rotation	-	CCW
SF System SetPt	-	HIGH SPEED
RA Damper Position	-	100%
Min OA Damper Position	-	~30%
Min OA Damper Type	-	NONE
OA Enthalpy Setpt	-	N/A

Performance Data		
	Design	Actual
MA Plenum SP	-	-0.41"
Fan Suction SP	-	-0.67"
Fan Discharge SP	-	0.59"
Total ESP	0.80"	1.0"
Fan Total SP	-	1.26"

General	
	Actual
Fan Rotation Correct	YES
Unit Filters Clean	YES
Condensate Drain Installed	YES

Completed By: Zack Eismin on 05/06/2025

Notes:  
UNIT IS UNABLE TO MEET DESIGN 1769/2000 CFM  
UNIT PROPORTIONALLY BALANCED LOW.

Written By: Zack Eismin on 06/30/2025

**Unit Data - PHOTO LOG**



**05/06/2025**

# National TAB

Project:05-05-25 SWEETGREEN SANTA CLARA, CA (TAB, IAQ)

## AHU/RTU



### Diffuser Supply (GRD)

#### AHU2/KITCHEN

Asset									
Asset Name	Location	Type	Size	DESIGN CFM	AK	CFM(1)	CFM(2)	FINAL CFM	% to design
SGRD1	COLD PREP	CD2	12"	500	1	343	349	427	85.4
SGRD2	HOT PREP	CD2	12"	475	1	417	345	423	89.1
SGRD3	KITCHEN	CD2	12"	125	1	104	93	114	91.2
SGRD4	KITCHEN	CD2	12"	250	1	130	177	217	86.8
SGRD5	KITCHEN	CD2	12"	250	1	159	187	229	91.6
SGRD6	KITCHEN	CD2	12"	400	1	295	293	359	89.8
Total				2000		1448	1444	1769	88.45%

Completed By: Zack Eismin on 05/06/2025

# National TAB

Project: 05-05-25 SWEETGREEN SANTA CLARA, CA (TAB, IAQ)



## System/Unit: AHU/RTU

Asset: AHU3

AREA:FOH KITCHEN/DINING

Unit Data		
	Design	Actual
MFG	LENNOX	LENNOX
Serial Num	-	1517L01774
Model Num	CBX27UH-060	CBX27UH-60-460-6-02
Type	AHU	AHU
Configuration	VERTICAL	VERTICAL
Num OA Filters 1	-	N/A
OA Filter Size 1	-	N/A
Num Final Filter 1	-	1
Final Filter Size 1	-	20X24X1
Num Final Filter 2	-	
Final Filter Size 2	-	

Motor Data		
	Design	Actual
Motor MFG	-	NL
Frame	-	NL
Horsepower	-	1
Motor Rpm	-	NL
Phase	3	3
Rated Voltage	480	480
Rated Amperage	-	4

Drive Data	
	Actual
Motor Sheave Size	DD
Motor Bore Size	DD
Motor Sheave SetPt	DD
Fan Sheave Size	DD
Fan Sheave Bore	DD
Belt CL Distance	DD
Num of Belts	DD
Belt Size	DD
Belt Alignment	DD

Test Data		
	Design	Actual
SF CFM	2000	2010
SF RPM	-	HIGH SPEED
RA CFM	1280	1329
OA CFM	720	681
RL Voltage	-	485/485/485
RL Amperage	-	2.95
SF Rotation	-	CCW
SF System SetPt	-	HIGH SPEED
RA Damper Position	-	100%
Min OA Damper Position	-	~60%
Min OA Damper Type	-	MANUAL DAMPER
OA Enthalpy Setpt	-	N/A

Performance Data		
	Design	Actual
MA Plenum SP	-	-0.27
Fan Suction SP	-	-0.63"
Fan Discharge SP	-	0.47"
Total ESP	0.80"	0.74"
Fan Total SP	-	1.10"

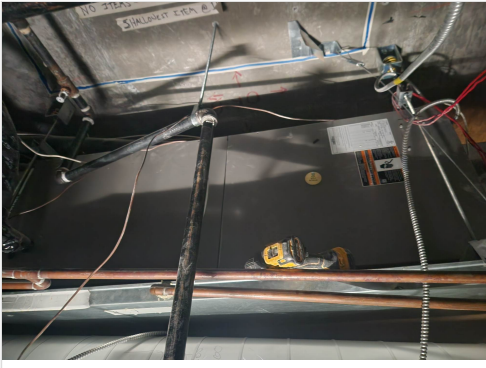
General	
	Actual
Fan Rotation Correct	YES
Unit Filters Clean	YES
Condensate Drain Installed	YES

Completed By: Zack Eismin on 05/06/2025

Notes:  
EXISTING DUCTWORK DOES NOT HAVE DAMPERS DIFFUSERS CANNOT BE SET

Written By: Zack Eismin on 06/30/2025

## Unit Data - PHOTO LOG



05/06/2025

# National TAB

Project:05-05-25 SWEETGREEN SANTA CLARA, CA (TAB, IAQ)

## AHU/RTU



### Diffuser Supply (GRD)

#### AHU3/FOH KITCHEN/DINING

Asset									
Asset Name	Location	Type	Size	DESIGN CFM	AK	CFM(1)	CFM(2)	FINAL CFM	% to design
SGRD1	DINING	R	10"	350	1	223	223	303	86.6
SGRD2	DINING	R	10"	300	1	311	311	423	141.0
SGRD3	DINING	R	10"	300	1	274	274	373	124.3
SGRD4	DINING	R	10"	350	1	201	201	274	78.3
SGRD5	DINING	R	10"	350	1	198	198	281	80.3
SGRD6	DINING	R	10"	350	1	261	261	356	101.7
Total				2000		1468	1468	2010	100.5%

Completed By: Zack Eismin on 05/06/2025

# National TAB

Project: 05-05-25 SWEETGREEN SANTA CLARA, CA (TAB, IAQ)



## System/Unit: AHU/RTU

Asset: AHU4

AREA: DINING

Unit Data		
	Design	Actual
MFG	LENNOX	LENNOX
Serial Num	-	1617F06728
Model Num	CBX27UH-036	CBX27UH-036-460-6-02
Type	AHU	AHU
Configuration	VERTICAL	VERTICAL
Num OA Filters 1	-	N/A
OA Filter Size 1	-	N/A
Num Final Filter 1	-	1
Final Filter Size 1	-	20X24X1
Num Final Filter 2	-	
Final Filter Size 2	-	

Motor Data		
	Design	Actual
Motor MFG	-	NL
Frame	-	NL
Horsepower	-	0.5
Motor Rpm	-	NL
Phase	3	3
Rated Voltage	480	480
Rated Amperage	-	2.1

Drive Data	
	Actual
Motor Sheave Size	DD
Motor Bore Size	DD
Motor Sheave SetPt	DD
Fan Sheave Size	DD
Fan Sheave Bore	DD
Belt CL Distance	DD
Num of Belts	DD
Belt Size	DD
Belt Alignment	DD

Test Data		
	Design	Actual
SF CFM	1200	1219
SF RPM	-	HIGH SPEED
RA CFM	770	828
OA CFM	430	391
RL Voltage	-	485/485/484
RL Amperage	-	1.6/1.6/1.6
SF Rotation	-	CCW
SF System SetPt	-	HIGH SPEED
RA Damper Position	-	100%
Min OA Damper Position	-	100%
Min OA Damper Type	-	NONE
OA Enthalpy Setpt	-	N/A

Performance Data		
	Design	Actual
MA Plenum SP	-	-0.33"
Fan Suction SP	-	-0.59"
Fan Discharge SP	-	0.44"
Total ESP	0.80"	0.77"
Fan Total SP	-	1.03"

General	
	Actual
Fan Rotation Correct	YES
Unit Filters Clean	YES
Condensate Drain Installed	YES

Completed By: Zack Eismin on 05/06/2025

Notes:  
EXISTING DUCTWORK DOES NOT HAVE DAMPERS DIFFUSERS CANNOT BE BALANCED.

Written By: Zack Eismin on 06/30/2025

# National TAB

Project:05-05-25 SWEETGREEN SANTA CLARA, CA (TAB, IAQ)

## AHU/RTU



### Diffuser Supply (GRD)

#### AHU4/DINING

Asset									
Asset Name	Location	Type	Size	DESIGN CFM	AK	CFM(1)	CFM(2)	FINAL CFM	% to design
SGRD1	DINING	E	10"	300	1	229	229	245	81.7
SGRD2	DINING	R	10"	300	1	333	333	356	118.7
SGRD3	DINING	R	10"	300	1	291	291	311	103.7
SGRD4	DINING	R	10"	300	1	286	286	307	102.3
Total				1200		1139	1139	1219	101.58%

Completed By: Zack Eismín on 05/06/2025

# National TAB

Project: 05-05-25 SWEETGREEN SANTA CLARA, CA (TAB, IAQ)



## System/Unit: FAN - Exhaust

Asset: EF1

AREA:HOOD FAN

Unit Data		
	Design	Actual
MFG	CAPTIVEAIRE	CAPTIVEAIRE
Model Num	DU85HFA	DU85HFA
Serial Num	-	7053221
Type	UPBLAST	UPBLAST
Configuration	VERTICAL	VERTICAL

Test Data		
	Design	Actual
CFM	1350	1352
Fan RPM	-	NA
Fan Rotation	-	CCW
Motor RPM	-	NA
System SetPt	-	LOW
RL Voltage	-	117
RL Amperage	-	5.2
Total ESP	1.00"	1.02"
Fan Inlet SP	-	-1.02
Fan Discharge SP	-	ATM

Motor Data		
	Design	Actual
Motor MFG	-	HSSA
Frame	-	NL
Horsepower	.75	0.75
Motor Rpm	-	1900
Phase	1	1
Voltage (rated)	120	115
Amperage (rated)	-	9.8
Service Factor	-	NL

Completed By: Zack Eismin on 05/06/2025

### Unit Data - PHOTO LOG



05/05/2025

# National TAB

Project: 05-05-25 SWEETGREEN SANTA CLARA, CA (TAB, IAQ)



## System/Unit: FAN - Exhaust

Asset: EF2

AREA:RESTROOMS

Unit Data		
	Design	Actual
MFG	GREENHECK	GREENHECK
Model Num	SB-081-6-X	SB-081-6-X
Serial Num	-	16116148
Type	CEILING	DOWNBLAST
Configuration	VERTICAL	VERTICAL

Test Data		
	Design	Actual
CFM	300	289
Fan RPM	-	1378
Fan Rotation	-	CCW
Motor RPM	-	1773
System SetPt	-	1 TURN OPEN
RL Voltage	-	NA
RL Amperage	-	NA
Total ESP	1.00"	0.69"
Fan Inlet SP	-	-0.69"
Fan Discharge SP	-	ATM

Motor Data		
	Design	Actual
Motor MFG	-	MARATHON
Frame	-	48Y
Horsepower	.17	0.17
Motor Rpm	-	1725
Phase	1	1
Voltage (rated)	120	115
Amperage (rated)	-	3.6
Service Factor	-	1.15

Completed By: Zack Eismin on 05/05/2025

### Unit Data - PHOTO LOG



05/05/2025

# National TAB

Project:05-05-25 SWEETGREEN SANTA CLARA, CA (TAB, IAQ)

## FAN - Exhaust



Diffuser Ret/Exh (GRD)

### EF2/RESTROOMS

Asset									
Asset Name	Location	Type	Size	DESIGN CFM	AK	CFM(1)	CFM(2)	FINAL CFM	% to design
EF2-EGRD1	RESTROOM	EG	6"	75	1	93	70	70	93.3
EF2-EGRD2	RESTROOM	EG	6"	150	1	115	142	142	94.7
EF2-EGRD3	RESTROOM	EG	6"	75	1	47	77	77	102.7
Total				300		255	289	289	96.33%

Completed By: Zack Eismin on 05/05/2025

# National TAB

Project: 05-05-25 SWEETGREEN SANTA CLARA, CA (TAB, IAQ)



## System/Unit: FAN - Supply

Asset: SF1

AREA:

Unit Data		
	Design	Actual
MFG	NL	COOK
Model Num	NL	165SQN10D165SQN0
Serial Num	-	2878SL69202
Type	-	INLINE

Motor Data		
	Design	Actual
Motor MFG	-	NL
Frame	-	NL
Horsepower	-	NL
Motor Rpm	-	1050
Phase	-	1
Voltage (rated)	-	115
Amperage (rated)	-	NL
Service Factor	-	NL

Drive Data	
	Actual
Motor Sheave Size	DD
Motor Bore Size	DD
Fan Sheave Size	DD
Fan Sheave Bore	DD
Belt CL Distance	DD
Num of Belts	DD
Belt Size	DD

Test Data		
	Design	Actual
CFM	1550	1454
SF RPM	-	1050
Motor Frequency	-	N/A
SF System SetPt	-	HIGH SPEED
RL Voltage	-	NA
RL Amperage	-	NA
Suction ESP	-	-0.43"
Discharge ESP	-	0.25"
Total ESP	-	0.68"
Brake Horse Power	-	NA

Completed By: Zack Eismin on 06/30/2025