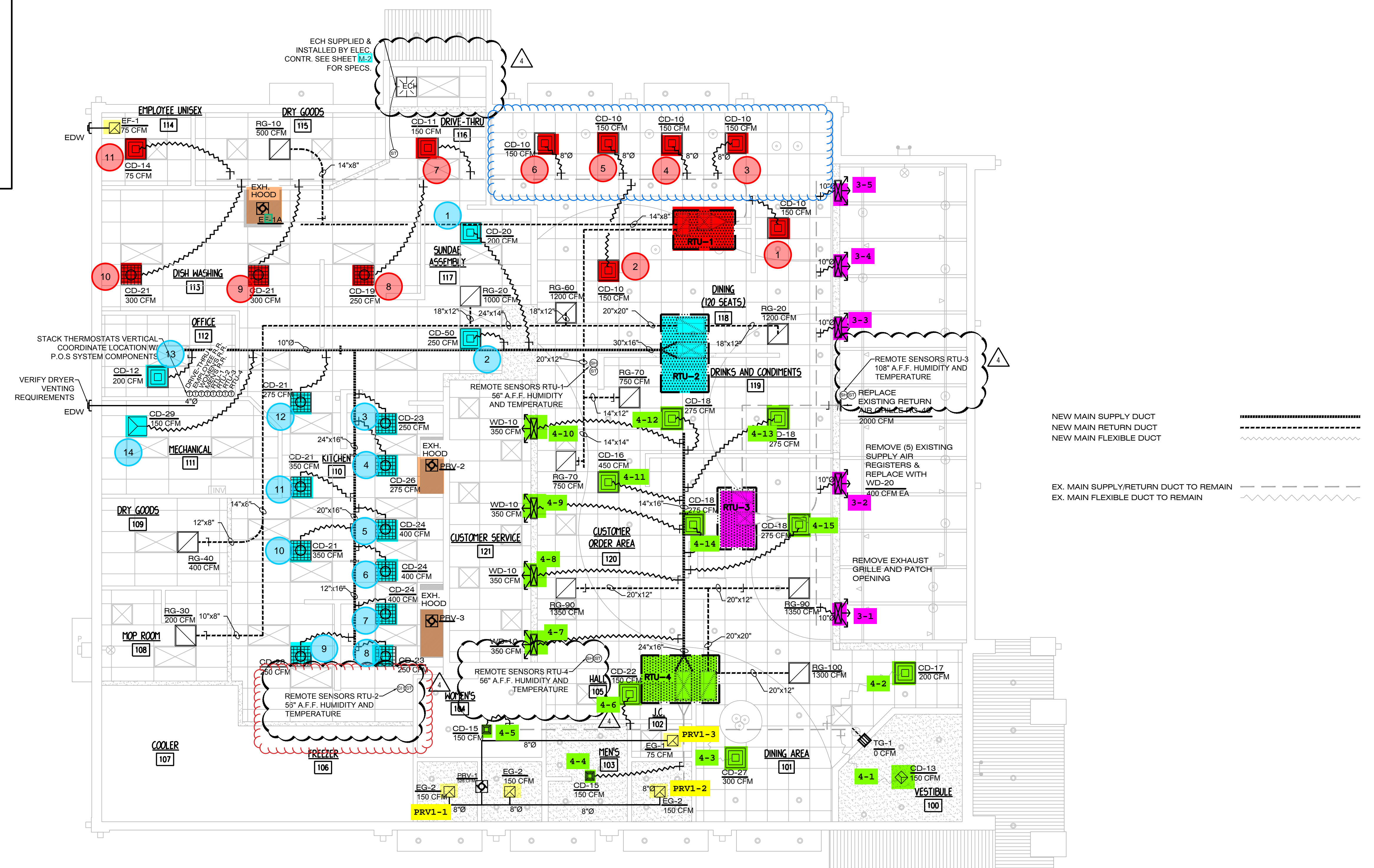


HVAC LEGEND:

WD-20 600 CFM	←	DIFFUSER DESIGNATION DIFFUSER C.F.M.
		CD CEILING DIFFUSER W/ C.F.M. - 4 WAY
		CD PERFORATED CEILING DIFFUSER
		CD CEILING DIFFUSER W/ C.F.M. - 3 WAY
		CD CEILING DIFFUSER W/ C.F.M. - 2 WAY
		RG RETURN DIFFUSER - SUSP. CEILING
		EG EXHAUST GRILLE
		PRV POWER ROOF VENT
		ECH ELECTRIC CEILING HEATER
		WD - WALL OR BULKHEAD SUPPLY GRILLE - LINEAR
		TG - TRANSFER GRILL
		SH - SENSOR HUMIDITY
		ST - SENSOR TEMPERATURE

- GENERAL NOTES:**
1. VERIFY ALLOWABLE FLEX DUCT LENGTHS WITH LOCAL CODES AND MODIFY ACCORDINGLY. ATTACH FLEXIBLE AIR CONNECTOR TO RIGID DUCT W/STEEL DRAW BANDS N-ONLY. CLASS 1 FLEXIBLE AIR CONNECTOR PER U.L.181 - MAX LENGTH 8'-0". PROVIDE SUPPORT AT 4'-0" O.C.
 2. VENTING OF ANY COMBUSTIBLE BY-PRODUCTS IS PROHIBITED WITHIN 10 FEET OF ROOF TOP UNITS. VERIFY WITH LOCAL BUILDING INSPECTOR.
 3. DIFFUSERS AND RETURN GRILLES IN BLACK ACT TO BE BLACK, ALL OTHERS TO BE WHITE.

- RECOMMENDED HVAC SET POINTS:**
1. DINING HEATING 70°, COOLING 72°
 2. KITCHEN HEATING 68°, COOLING 74°



THIS DRAWING AND ALL INFORMATION CONTAINED HEREIN ARE THE SOLE, CONFIDENTIAL AND EXCLUSIVE PROPERTY OF ARCHITECTURAL CONCEPTS. PUBLICATION OF THIS DRAWING IS LIMITED SOLELY TO THE SPECIFIC PROJECT AND/OR SITE NOTED HEREIN. REPRODUCTION, PUBLICATION, REUSE OR MODIFICATION OF THIS DOCUMENT IN WHOLE OR IN PART IS EXPRESSLY PROHIBITED WITHOUT PRIOR WRITTEN CONSENT OF ARCHITECTURAL CONCEPTS.

DATE	REVISION
04-28-2023	FOR CONSTRUCTION
05-03-2023	△ BULLETIN #1
07-13-2023	△ BULLETIN #3
08-03-2023	△ BULLETIN #4

PROPOSED RENOVATION FOR:



1180 WEST SUPERIOR STREET
WAYLAND, MI 49348

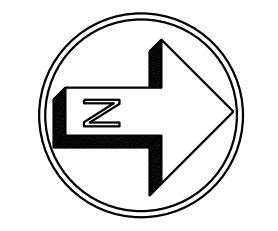


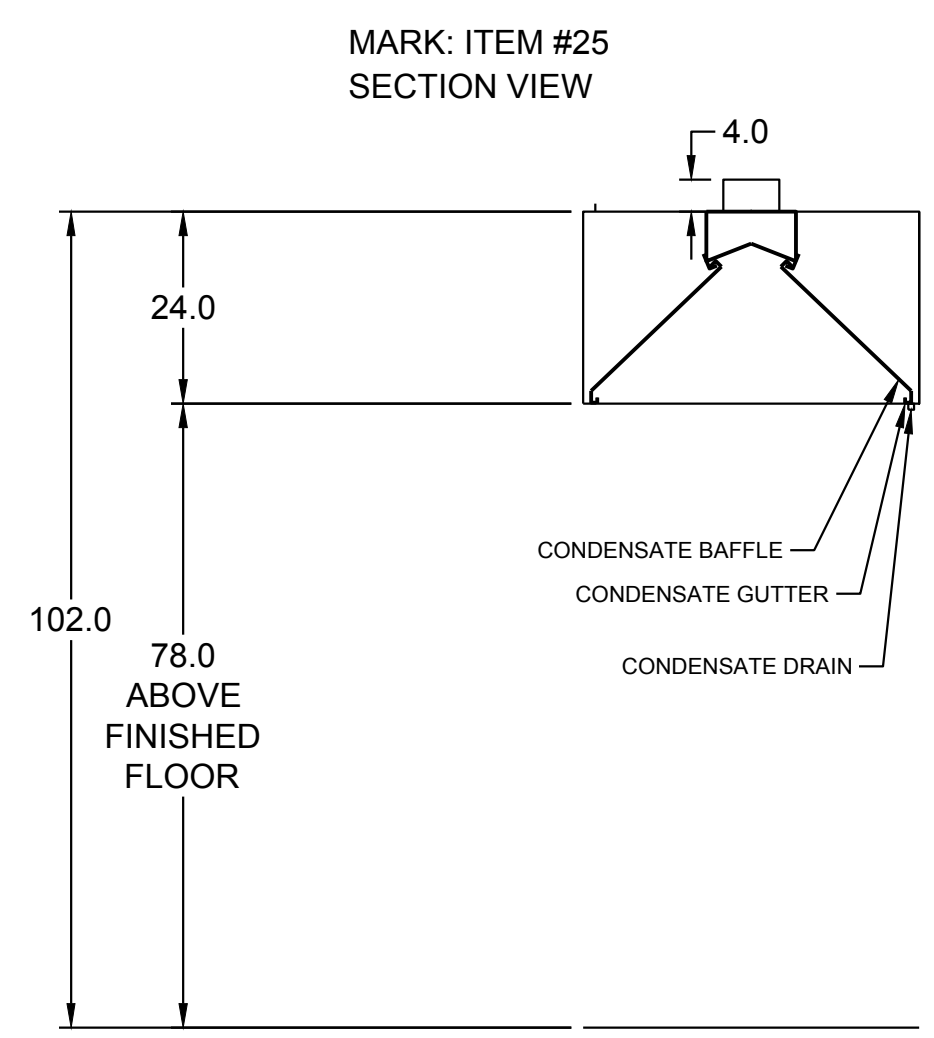
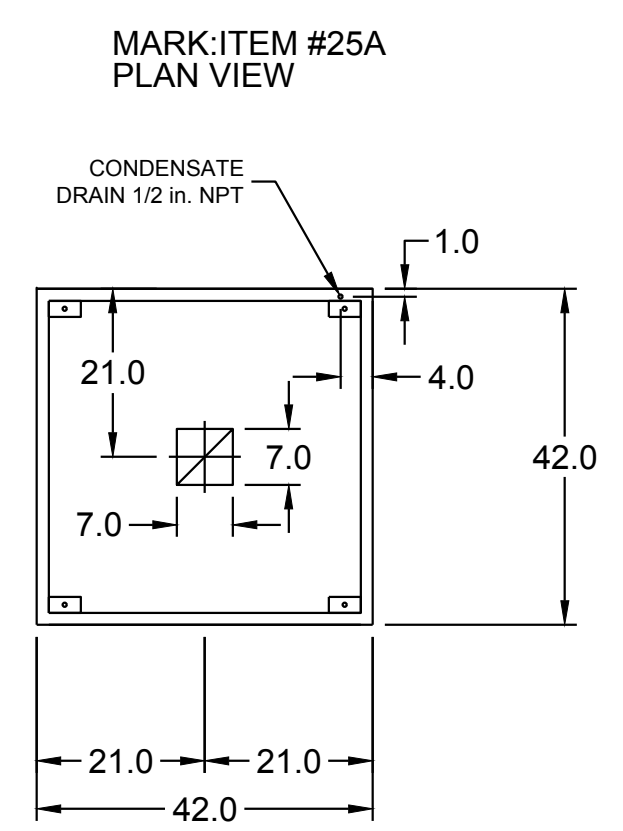
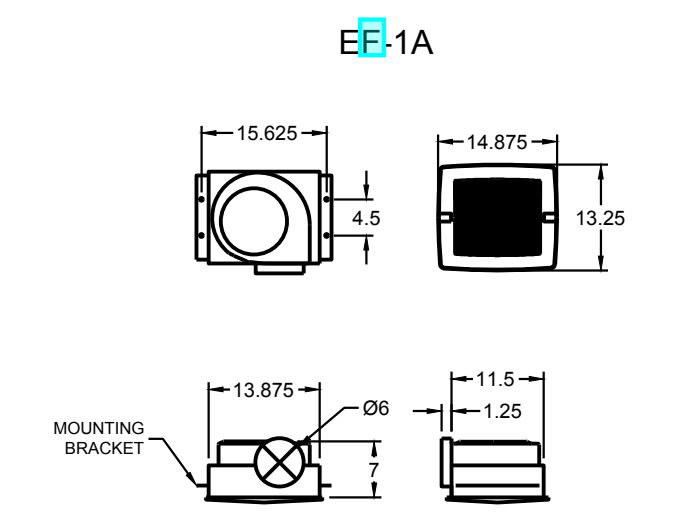
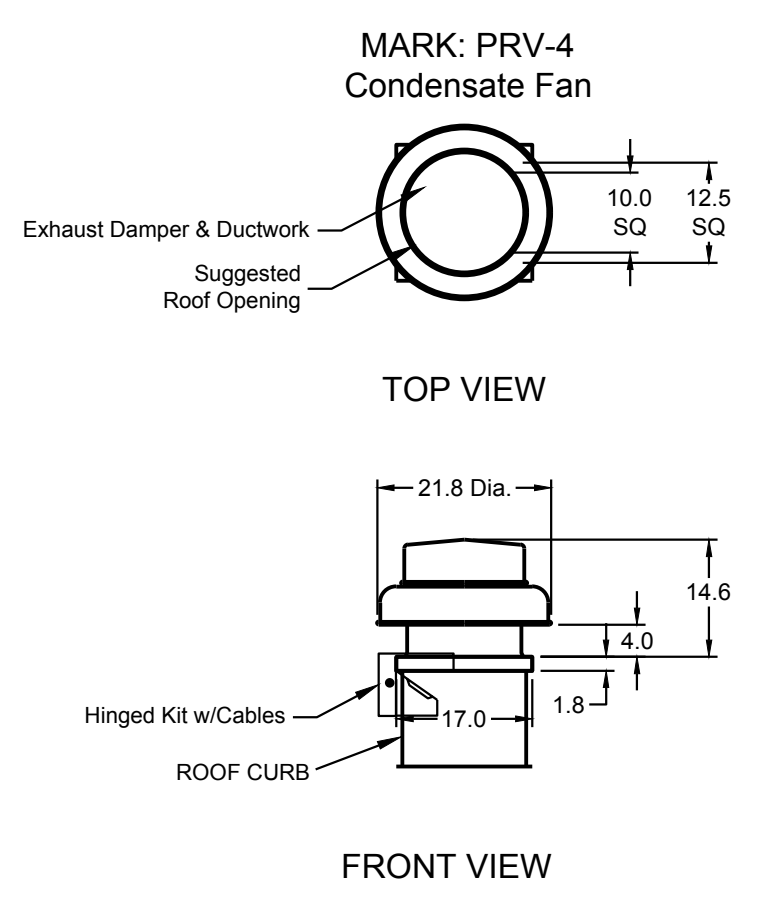
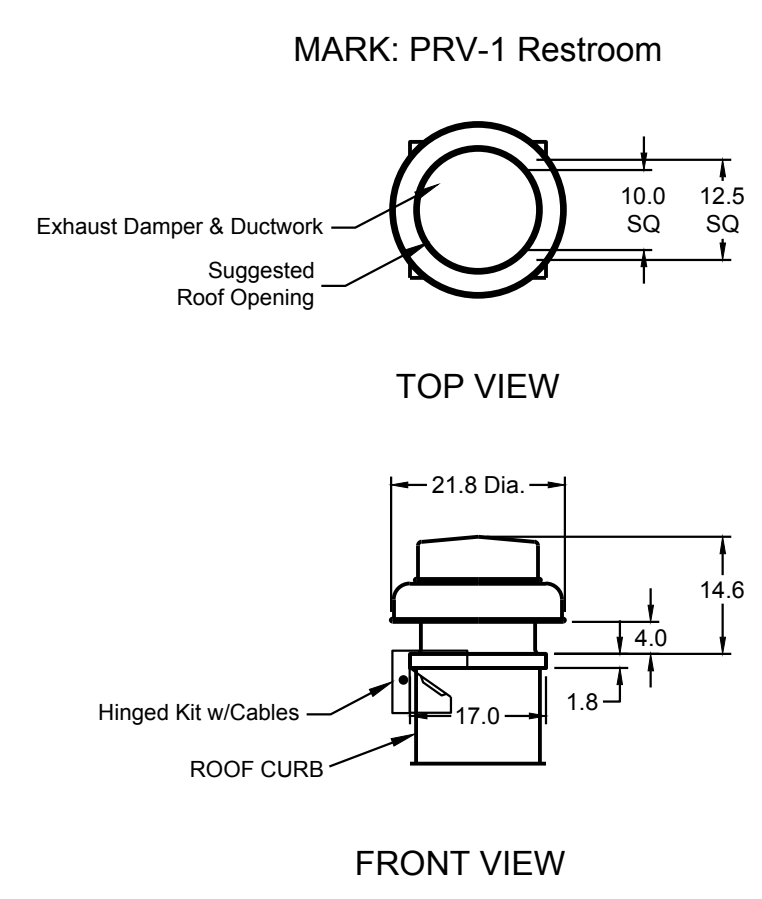
ARCHITECTURE
PLANNING
ENGINEERING
6650 CROSSING DRIVE, S.E.
GRAND RAPIDS, MI 49508
(616) 554-1222
FAX (616) 554-1225

DATE APRIL 28, 2023	PROJECT No. 22-38
------------------------	----------------------

SHEET No. M-1

HVAC PLAN
SCALE: 3/16" = 1'-0"





EQUIPMENT SCHEDULE			
ELECTRICAL CONTROL BOX			
DESCRIPTION / ACCUREX MODEL	EXHAUST FAN QTY	SUPPLY FAN QTY	POWER FREQUENCY
KITCHEN FAN CONTROL CENTER: XFCC SHIP LOOSE; SHIP LOOSE FOR REMOTE MOUNTING	2	0	60 CYCLE

CONTROL PANEL ENCLOSURE - 18 GA 304 STAINLESS STEEL ENCLOSURE (NEMA 1) - DIMENSIONS 12 X 18 X 6
WIRING DIAGRAM # T100 - 20
STARTERS PROVIDED IN CONTROL PANEL - QTY 2
2 POSITION FAN SWITCH - QTY 1
INTEGRATED EXHAUST TEMPERATURE INTERLOCK SYSTEM
-FACTORY MOUNTED EXHAUST TEMPERATURE SENSORS - QTY 2
-COMPLIES WITH INTERNATIONAL MECHANICAL CODE 2006 SECTION 507.2.1.1
TURN ON EXHAUST IN FIRE
THERMAL OVERLOADS IN CABINET
1 SPEED FAN(S)

SPECIAL DESIGN REQUESTS			
SQR #00800240 - USE KIT #82883, WIRING DIAG. #2290536			
TYPE 2 KITCHEN HOOD			
HOOD NO.	ACCUREX MODEL STYLE / CONFIGURATION	HOOD DIMENSIONS SECTION LENGTH WIDTH HEIGHT	GREASE CLIP OR DRAIN HOOD TEMP RATING TOTAL WEIGHT SECTION LOCATION
1	XD3-42-S CONDENSATE HOOD - DOUBLE BASE	42.0 IN. 42 IN. 24 IN.	RIGHT NA 224.0 LBS. NA

EXHAUST PLENUM COLLARS							
HOOD SECTION # COLLAR #	DISTANCE TO END (IN.)	WIDTH (IN.)	LENGTH (IN.)	DIAMETER (IN.)	VOLUME (CFM)	S.P. (IN. WC)	VELOCITY (FT/MIN)
1/1	21	7	7	NA	350	0.127	1029

TOTAL EXHAUST CFM - SECTION 1
350.0 = 100.0 CFM / FT

OPTIONS AND ACCESSORIES
304 STAINLESS STEEL 100% CONSTRUCTION
FACTORY MOUNTED EXHAUST COLLAR(S)

EQUIPMENT SCHEDULE												
Direct Drive Centrifugal Roof Exhaust Fan												
Qty	Accurex Model	Volume (CFM)	SP (in wg)	FRPM	Operating Power (hp)	Weight (Lb.)	Size (hp)	V/C/P	Encl.	Motor RPM	Windings	FLA
1	XRED-095-D	375	0.5	1479	0.060	43	0.0667	115/60/1	OP	1550	1	NA

EQUIPMENT SCHEDULE												
Direct Drive Centrifugal Roof Exhaust Fan												
Qty	Accurex Model	Volume (CFM)	SP (in wg)	FRPM	Operating Power (hp)	Weight (Lb.)	Size (hp)	V/C/P	Encl.	Motor RPM	Windings	FLA
1	XRED-095-D	350	0.5	1455	0.07	43	0.0667	115/60/1	OP	1550	1	NA

EQUIPMENT SCHEDULE												
Direct Drive Centrifugal Roof Exhaust Fan												
Qty	Accurex Model	Volume (CFM)	SP (in wg)	FRPM	Operating Power (hp)	Weight (Lb.)	Size (hp)	V/C/P	Encl.	Motor RPM	Windings	FLA
1	XRED-095-D	350	0.5	1455	0.07	43	0.0667	115/60/1	OP	1550	1	NA

EQUIPMENT SCHEDULE												
Ceiling Exhaust Fan												
Qty	Accurex Model	Volume (CFM)	SP (in wg)	FRPM	Operating Power (hp)	Weight (Lb.)	Size (hp)	V/C/P	Encl.	Motor RPM	Windings	FLA
2	XCR-880	75	0.125	885	0.01	10	0.0	115/60/1	OP	900	1	NA

EQUIPMENT SCHEDULE												
Ceiling Exhaust Fan												
Qty	Accurex Model	Volume (CFM)	SP (in wg)	FRPM	Operating Power (hp)	Weight (Lb.)	Size (hp)	V/C/P	Encl.	Motor RPM	Windings	FLA
2	XCR-880	75	0.125	885	0.01	10	0.0	115/60/1	OP	900	1	NA

EQUIPMENT SCHEDULE												
UL/ULC 705 Listed - Electric fan												
Qty	Accurex Model	Volume (CFM)	SP (in wg)	FRPM	Operating Power (hp)	Weight (Lb.)	Size (hp)	V/C/P	Encl.	Motor RPM	Windings	FLA
2	XCR-880	75	0.125	885	0.01	10	0.0	115/60/1	OP	900	1	NA

THIS DRAWING AND ALL INFORMATION CONTAINED HEREIN ARE THE SOLE, CONFIDENTIAL AND EXCLUSIVE PROPERTY OF ARCHITECTURAL CONCEPTS. PUBLICATION OF THIS DRAWING IS LIMITED SOLELY TO THE SPECIFIC PROJECT AND/OR SITE NOTED HEREIN. REPRODUCTION, PUBLICATION, REUSE OR MODIFICATION OF THIS DOCUMENT IN WHOLE OR IN PART IS EXPRESSLY PROHIBITED WITHOUT PRIOR WRITTEN CONSENT OF ARCHITECTURAL CONCEPTS.

DATE	REVISION
04-28-2023	FOR CONSTRUCTION

FOR TECHNICAL SUPPORT ON ACCUREX CONTROLS PLEASE CALL
ACCUREX TECHNICAL SUPPORT:
 1-800-371-6858
SECONDARY CONTACTS ARE:
 AARON VAN KREY 715.841.8521
 TYLER SCHILLING 715.841.8749

Thank you for your interest in Accurex

SUBMITTAL

Please return one approved print to your Accurex Representative including signature, date, and answers to all submittal "verify" notes and questions. Fabrication will not begin until after approved drawings are received.

APPROVED AS SUBMITTED
 APPROVED AS NOTED
 REJECTED - REVISE AND RESUBMIT

SIGNATURE _____ DATE _____



ACCUREX

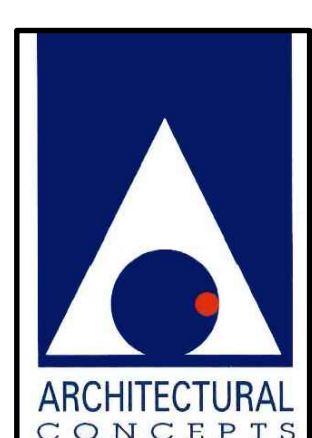
CULVER'S MASTER TEMPLATE

SCALE: 1/24

C28805C



1180 WEST SUPERIOR STREET
 WAYLAND, MI 49348



ARCHITECTURE
 PLANNING
 ENGINEERING

6550 CROSSING DRIVE, S.E.
 GRAND RAPIDS, MI 49508
 (616) 554-1222
 FAX (616) 554-1225

DATE: APRIL 28, 2023 PROJECT No. 22-38

SHEET No. M-5



MARK: CONTROLS

CAUTION
 UNIT SHALL BE GROUNDED IN ACCORDANCE WITH N.E.C. POWER MUST BE OFF WHILE SERVICING.

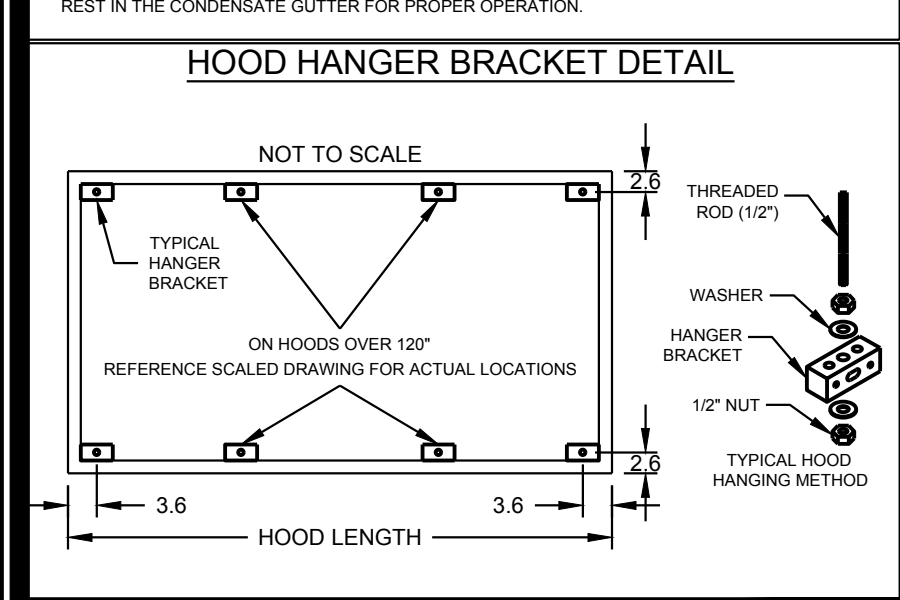
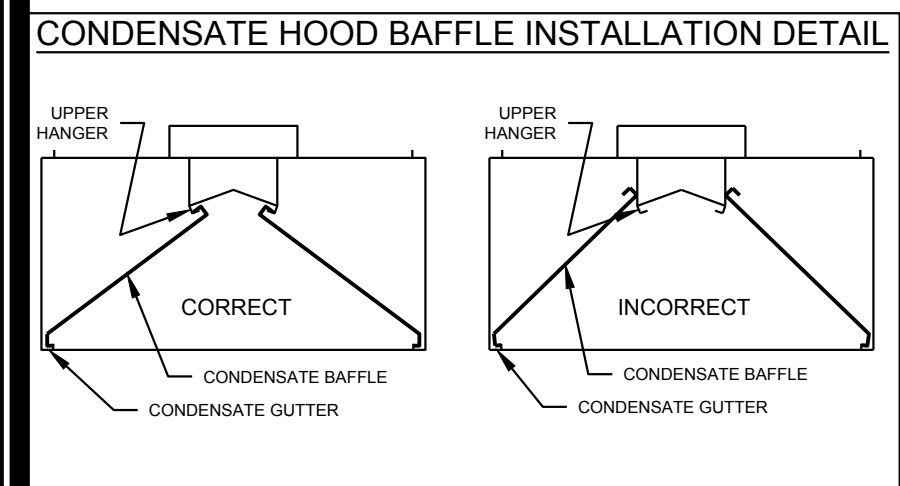
COMMERCIAL APPLIANCE OUTLET CENTER
 ELECTRICAL RATINGS: 120V, 1PHASE, 60HZ, 15A
 BASE FILE #E200616, ML FILE #E313951

THESE DRAWINGS SHALL NOT BE REMOVED FROM THIS EQUIPMENT. USE COPPER CONDUCTORS RATED TO 90°C UNLESS SPECIFIED. TORQUE CONTROL & GROUND BLOCKS TO 8 LBS. IN. TORQUE POWER LUGS/SCREWS TO COMPONENT RATINGS LISTED. FIELD CONTROL WIRING RESISTANCE SHOULD NOT EXCEED 0.75 OHM. SEE IOM FOR ADDITIONAL INFORMATION, OR CALL ACCUREX AT 1-800-371-6858.

PRG VERSION: V2.00
 FIELD WIRED
 FACTORY SUPPLIED AND WIRED

WIRING DIAGRAM CODE:
 JOB NAME:
CULVERS-METRO L NEW CONTROLS

MODEL: **XKC-CV-S-21-2-1-0**
 SERIAL NUMBER:



GENERAL DRAWING NOTES

Verify building entry conditions or limitations for equipment access to space.

Verify type and height of finished ceiling and if hood(s) may extend above finished ceiling (if required).

Seismic installation and bracing of equipment is by others. Accurex will not accept liability for problems that result from sub-standard installation. Including field electrical wiring that deviate from supplied diagrams, jobsite conditions (ductwork, fuel types and structural conditions) that Accurex has not been notified of at the time of ordering. Or use of this equipment other than that for which it is designed.

It is the responsibility of the purchaser to hire qualified personnel for installation and start-up of all equipment. Installation and start-up information is shipped with all equipment via the installation, Operation and Maintenance Manual (IOM), also included is a troubleshooting guide. Have all start-up info available prior to any warranty claims and/or factory technical support.

VENTILATION SYSTEM NOTES

Greenheck ventilators are designed in compliance with all national codes: NFPA # 96, national electric code, BOCA, uniform mechanical code, international mechanical code, and southern building conference. See national evolution report #436 for allowable values, and/or conditions of use concerning material presented in this document. Local codes may vary. It is the responsibility of the purchaser to submit drawings to local authorities.

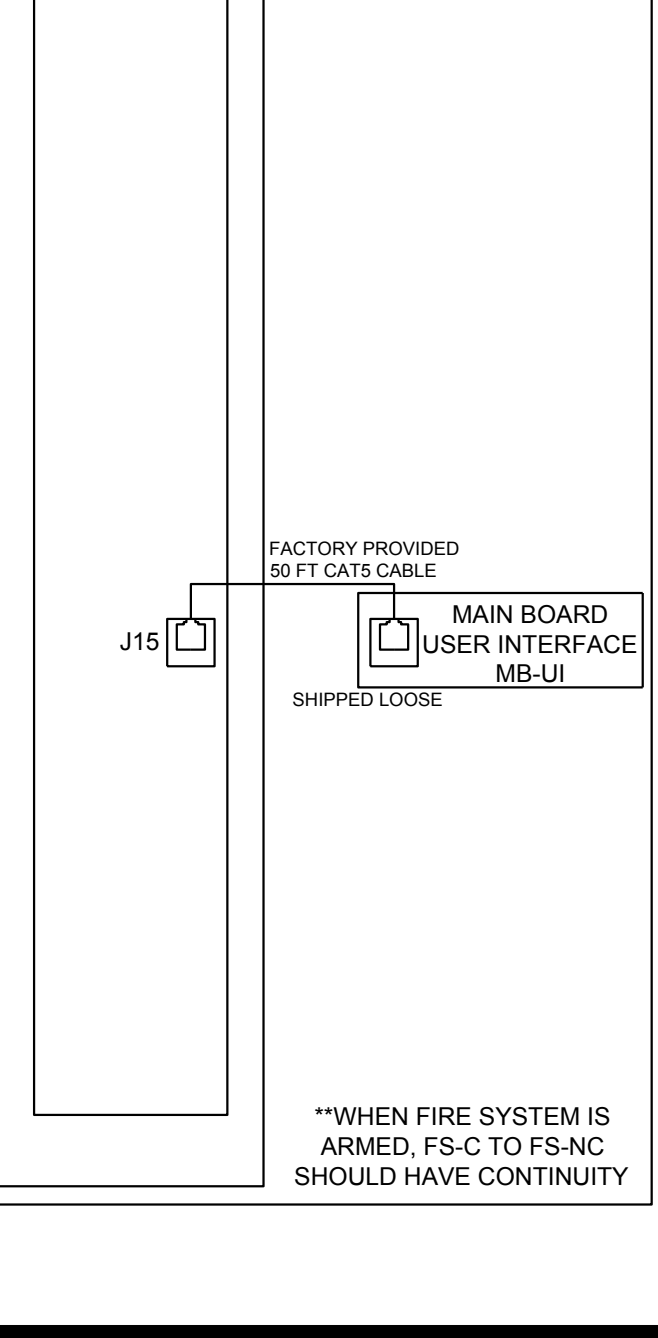
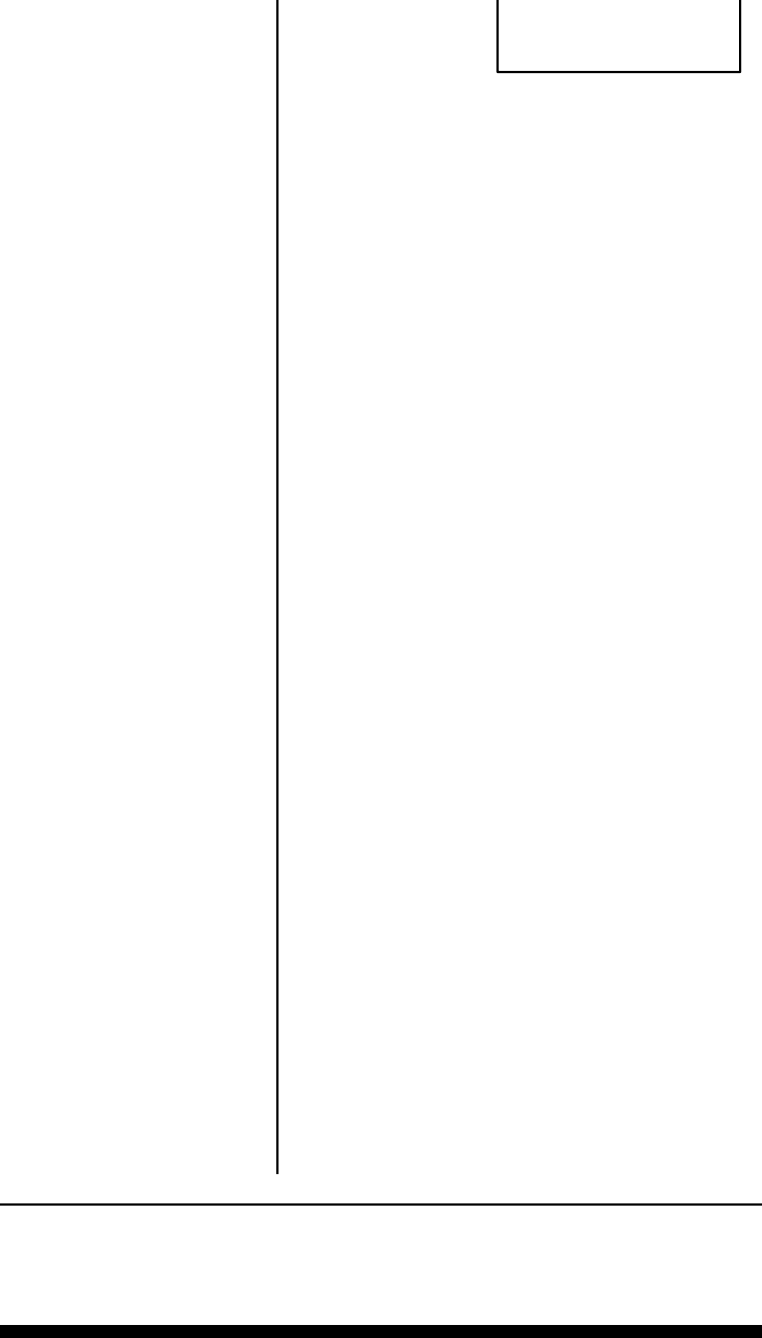
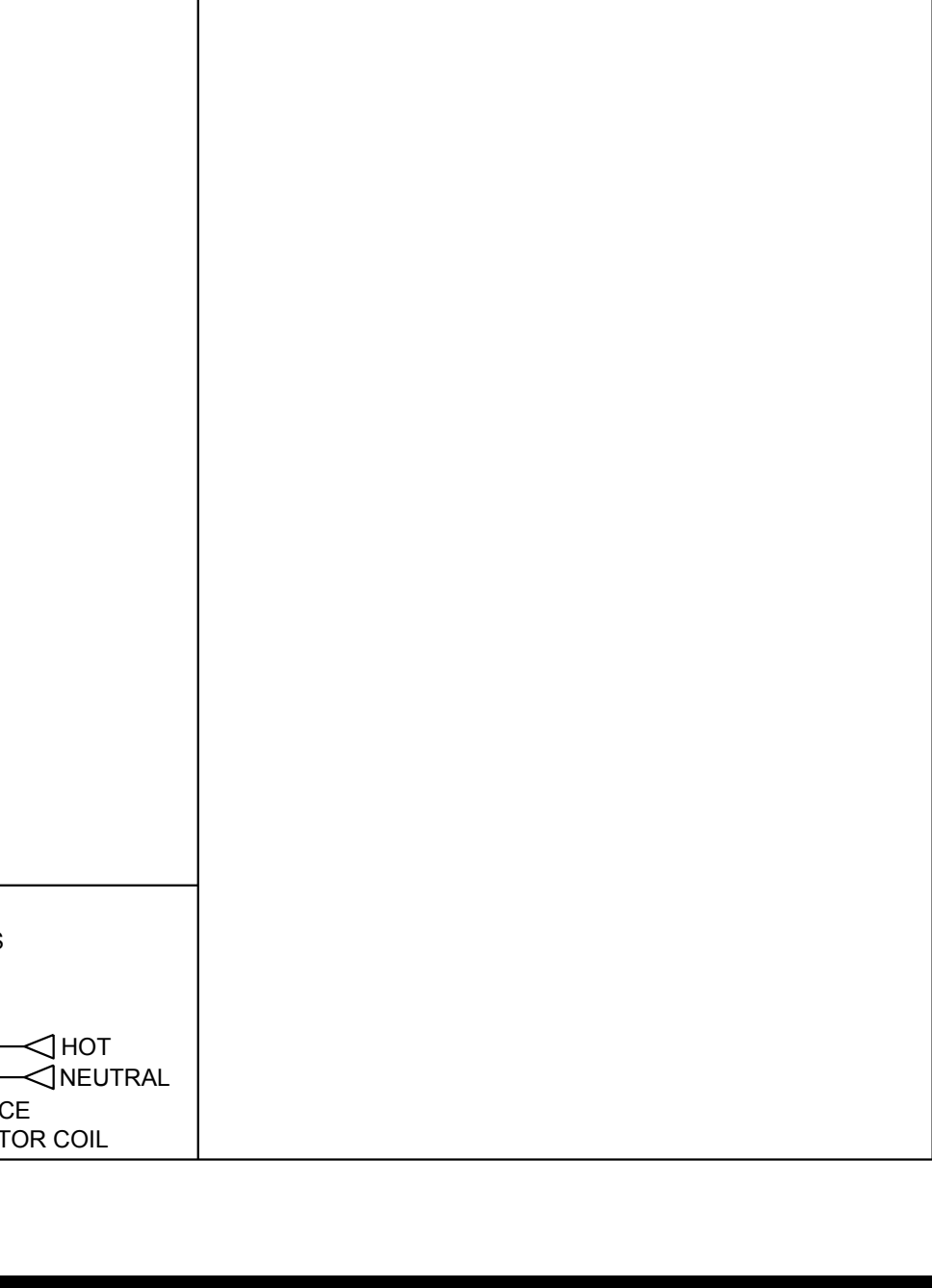
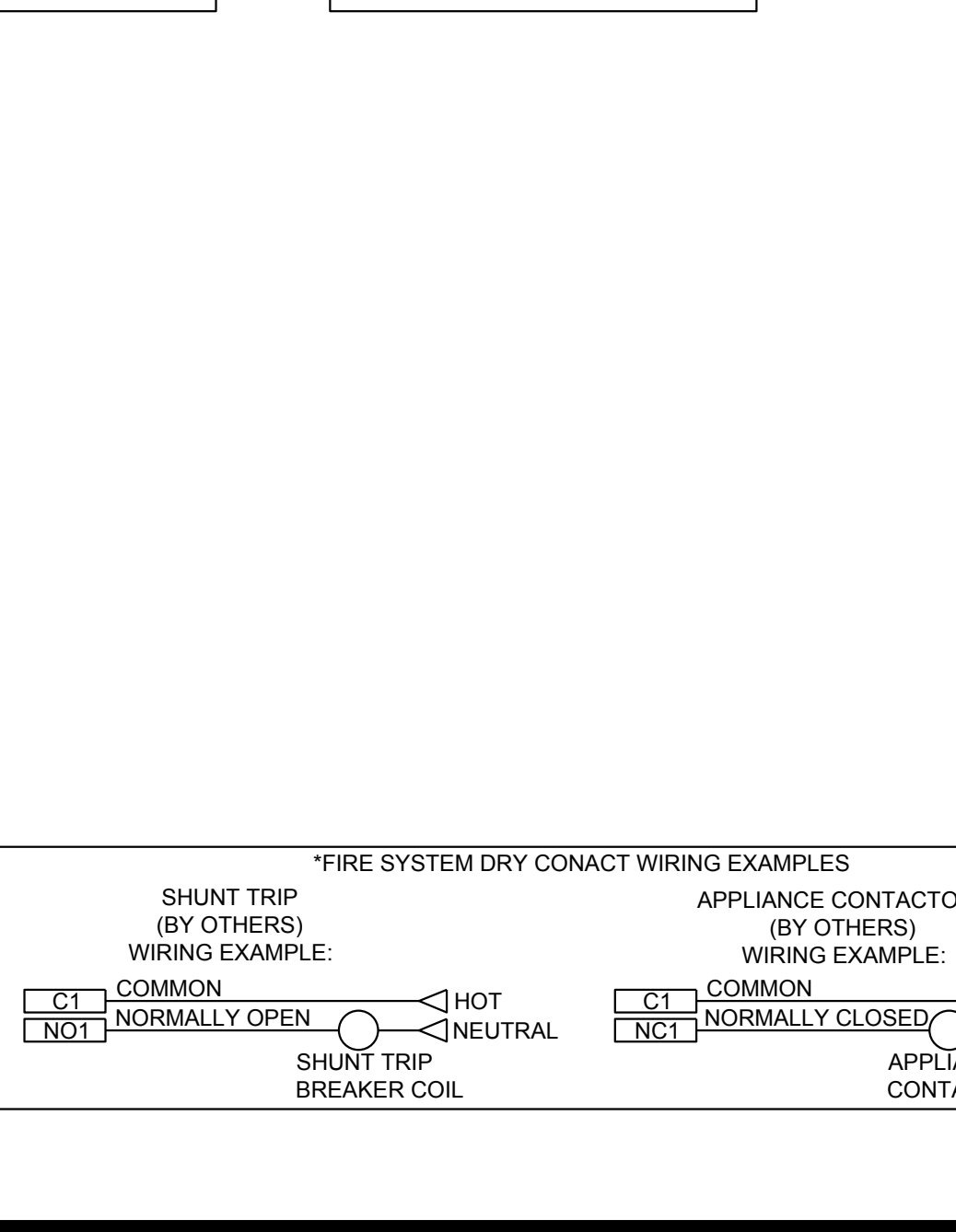
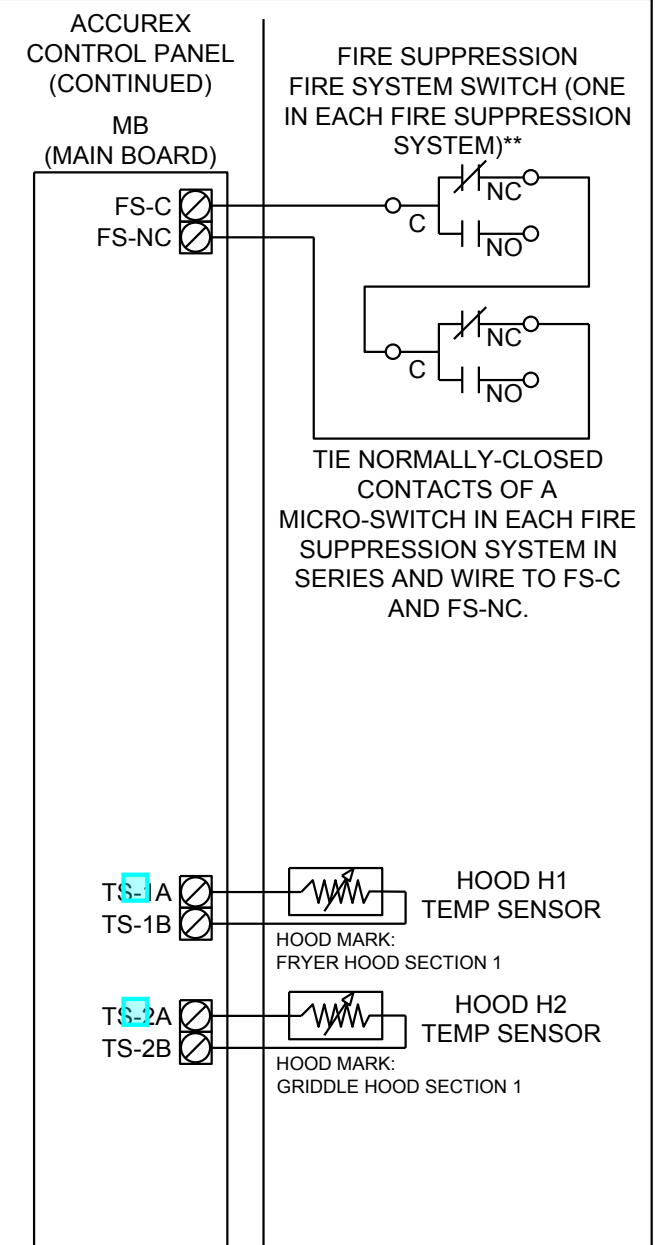
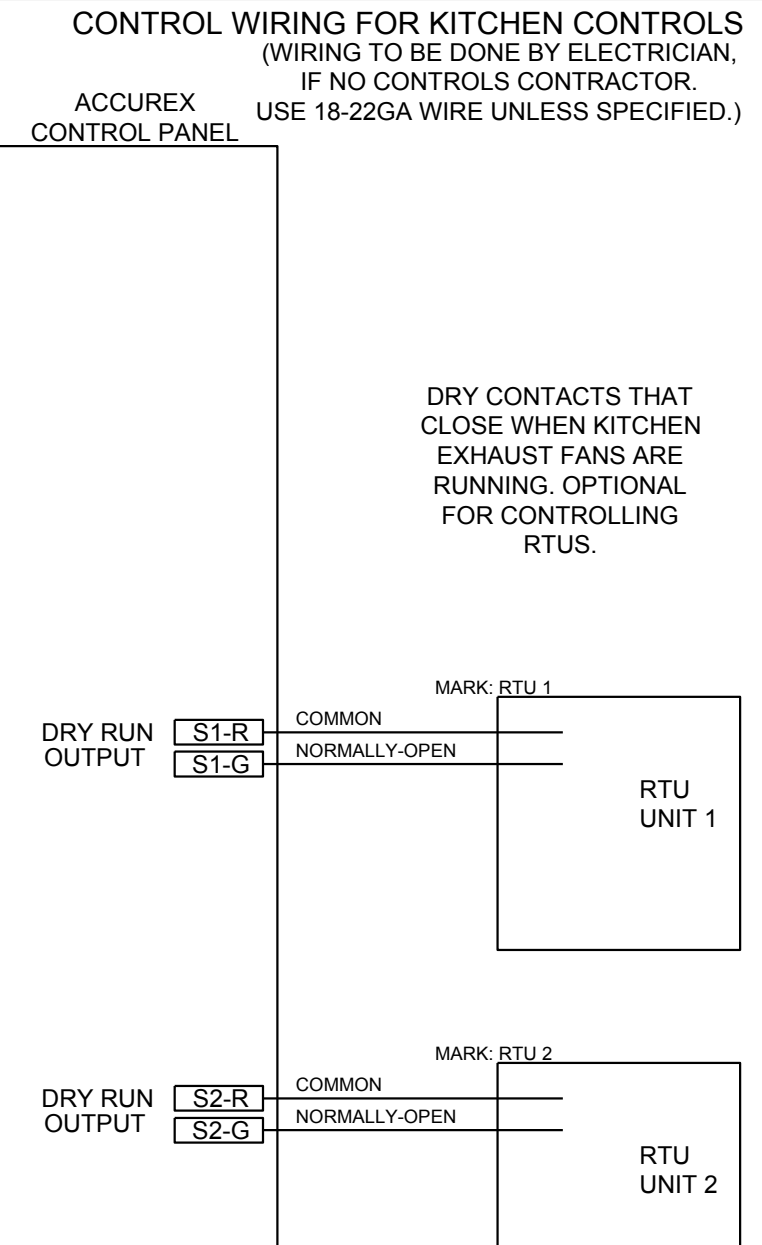
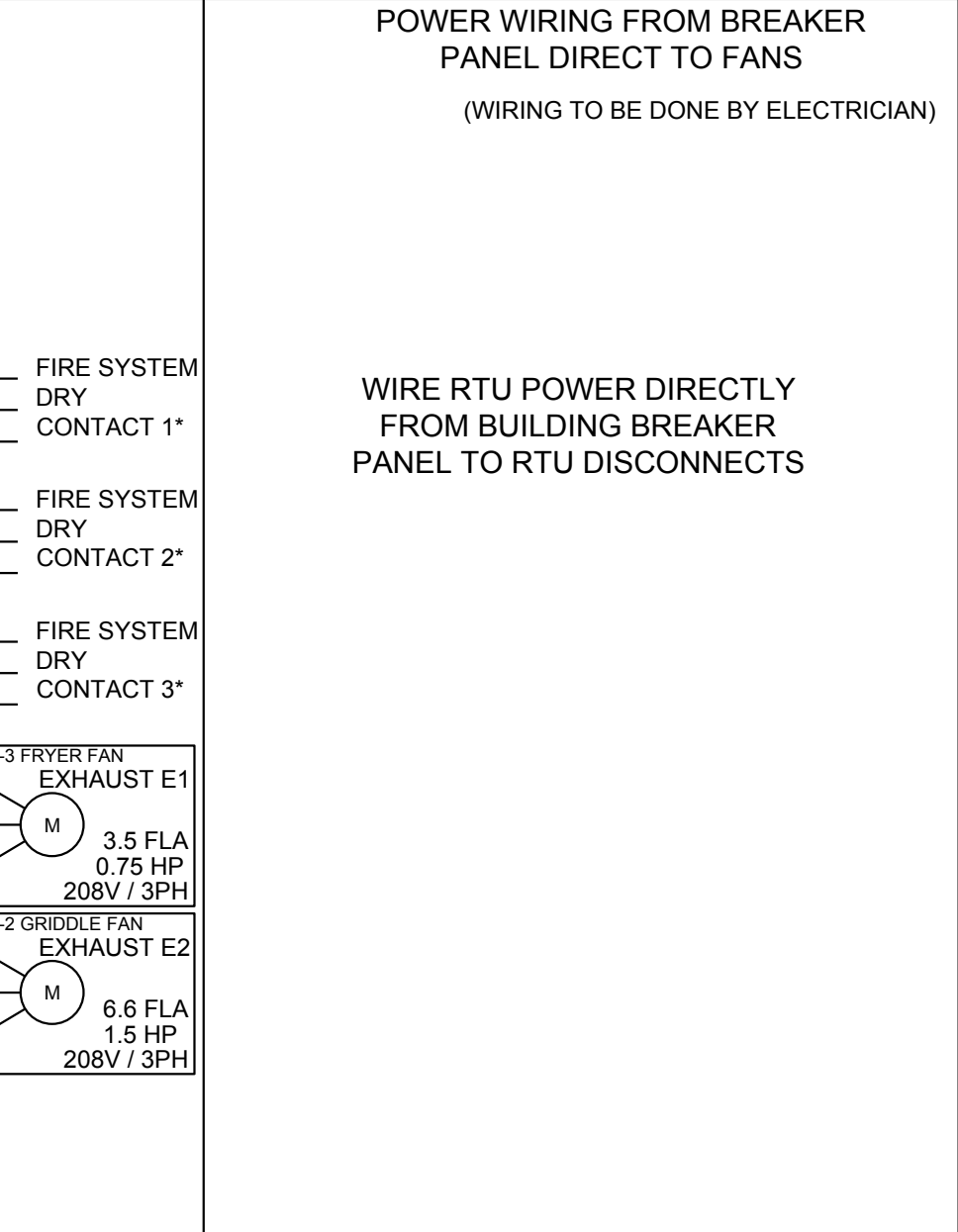
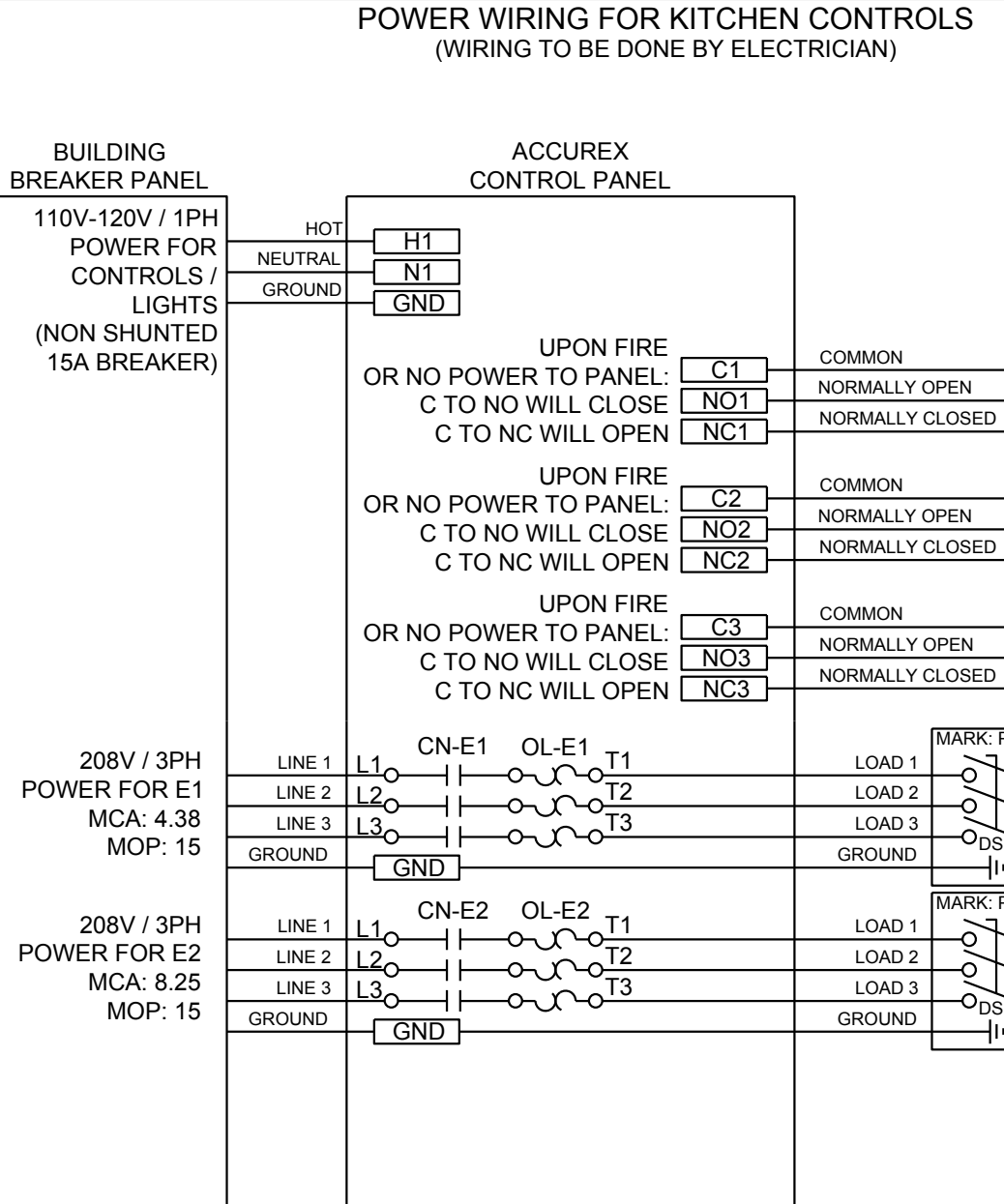
Exhaust and supply air volumes are to be maintained within -5% to +10% tolerance of values indicated. Static pressure(s) indicated are for the ventilator at the duct connection(s) only.

The grease filter face velocities are based on the filter manufacturers recommendations for maximum grease extraction. Inlet opening air velocities for waterwash, dry cartridge and high velocity cartridge filters manufactured by Greenheck are designed to deliver maximum grease extraction.

Hoods installation (by others unless otherwise noted) shall be in accordance with NFPA # 96 and applicable building codes.

PROPRIETARY INFORMATION NOTICE

This document is and contains confidential trade secret information of the company and remains property of the company and is to be returned upon use. Neither it nor information it contains may be reproduced or disclosed to persons not having a need-to-know consistent with the purpose of the loan document without written permission.



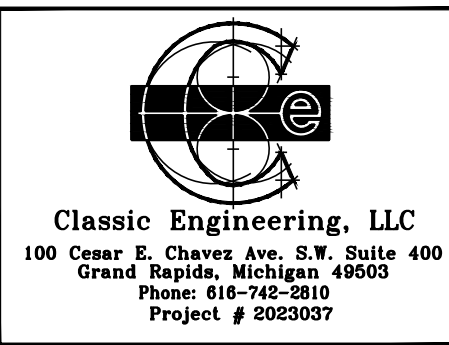
FACTORY PROVIDED 50 FT CAT5 CABLE

SHIPPED LOOSE

MAIN BOARD USER INTERFACE MB-UI

J15

**WHEN FIRE SYSTEM IS ARMED, FS-C TO FS-NC SHOULD HAVE CONTINUITY



EQUIPMENT SCHEDULE

TYPE 1 KITCHEN HOOD		HOOD DIMENSIONS			GREASE CUP OR DRAIN	HOOD TEMP. RATING	HOOD WEIGHT	MARK: ITEM #59
HOOD NO.	ACCUREX MODEL STYLE / CONFIGURATION	SECTION LENGTH	WIDTH	HEIGHT				SECTION LOCATION
1	XXEP-83S SINGLE WALL EXHAUST ONLY LOW PROXIMITY	83 IN.	TOP 23 IN. FRONT 12 IN. BOTTOM 3 IN. BACK 36 IN.		RIGHT	600 DEG F	169.0 LBS.	SINGLE

ILLUMINATION DETAILS		GREASE FILTRATION DETAILS					
HOOD NO.	FIXTURE TYPE BULB / LAMP INFO	QTY	INTENSITY FT CANDLES	TYPE / MODEL MATERIAL	QTY	LENGTH	HEIGHT
1	NONE	NA	0 / 0 IN. OC	X-TRACTOR STAINLESS STEEL	5	18 IN.	16 IN.

HOOD SECTION #	COLLAR #	DISTANCE TO END (IN.)	WIDTH (IN.)	LENGTH (IN.)	DIAMETER (IN.)	VOLUME (CFM)	S.P. (IN. WC)	VELOCITY (FT/MIN)
1.1		41.5	12	12	NA	1500	0.518	1500
TOTAL EXHAUST CFM - SECTION 1		1600 = 217 CFM / FT						

OPTIONS AND ACCESSORIES

430 STAINLESS STEEL WHERE EXPOSED
 UL 710 LISTED W/OUT EXHAUST FIRE DAMPER - UL #R25625
 BACK NON-INTEGRAL AIR SPACE - 3 IN WIDE
 26 IN HIGH CEILING ENCLOSURES - FRONT LEFT RIGHT - FIELD INSTALLED
 FACTORY MOUNTED EXHAUST COLLAR(S)
 THIS HOOD IS PART OF A TEMPERATURE INTERLOCK CONTROL SYSTEM
 INCLUDES PERFORMANCE ENHANCING LIP (PEL) TECHNOLOGY
 STANDING SEAM CONSTRUCTION FOR SUPERIOR STRENGTH
 EMBOSSED STAINLESS STEEL FINISH FOR HIGH CORROSION RESISTANCE
 EQUIPMENT SPECIFIC S/S FLUE ADAPTER

SPECIAL DESIGN REQUESTS

SDR #K1100559 - NEW 4L FRYER SYSTEM

FIRE SUPPRESSION SYSTEM MARK: FS FOR FRYER HOOD

MANUFACTURER / MODEL SUPPRESSANT TYPE	FLOW POINTS	SUPPLY LINE	DETECTION	MOUNTING
ANSUL R-102 WET CHEMICAL	18 UTILIZED 22 AVAILABLE	CONTINUOUS	FUSIBLE LINK	RIGHT END REMOTE MOUNTED

FULL INSTALLATION (INCLUDES PRE-PIPED HOODS) WITH DETECTION AND FACTORY COORDINATED INSTALL
 CHROME SLEEVES FOR FACTORY PROVIDED APPLIANCES DROPS - INCLUDED
 SUPPRESSION AGENT - INCLUDED - 6 GAL. - (2) 3.0 TANK(S)
 GAS VALVE - INCLUDED - MECHANICAL SHUTOFF VALVE, SUPPLIED UP TO 2"
 REMOTE PULL STATION - STANDARD - INSTALLATION AT SINGLE POINT OF EGRESS
 METAL BLOW-OFF CAPS - INCLUDED
 FIRE SYSTEM PERMIT - REQUIRED - FEE INCLUDED
 500°F. FUSIBLE LINK OR AS TESTED AND INSTALLED BY LOCAL INSTALLER PER UL MANUAL

FIRE SYSTEM PROTECTED HOOD(S) (UL-300) (MARK NAME / SECTION#)

FRYER HOOD SECTION 1 - (LENGTH 83.0 IN.) - LOW PROXIMITY HOOD

EQUIPMENT SCHEDULE

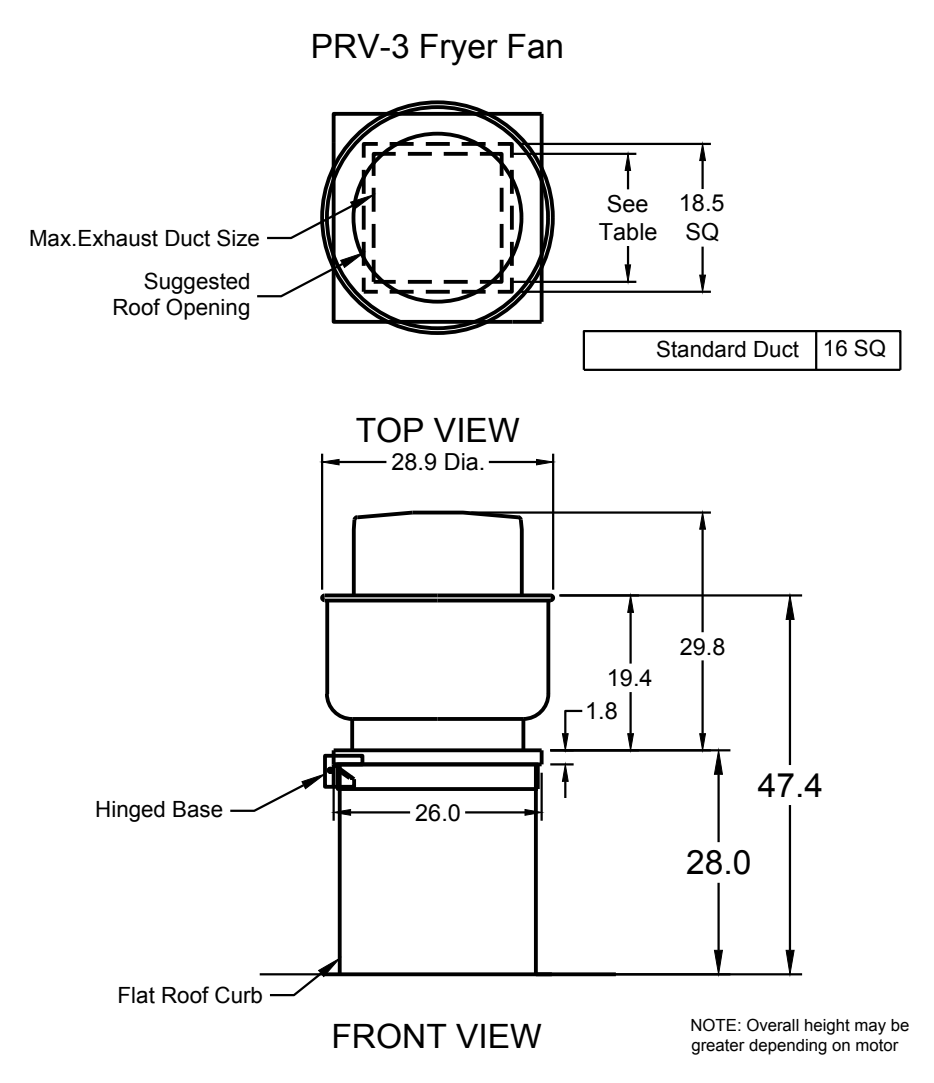
Beit Drive Upblast Centrifugal Roof Exhaust Fan MARK: PRV-3

Qty	Accurex Model	Volume (CFM)	SP (in wg)	FRPM	Operating Power (hp)	Weight (lb.)	Size (hp)	V/CP	Enc.	Motor	W/ndngs	FLA
1	XRUB-140-7	1500	1	1377	0.5	160	0.75	208/60/3	OP	1725	1	3.5

OPTIONS AND ACCESSORIES

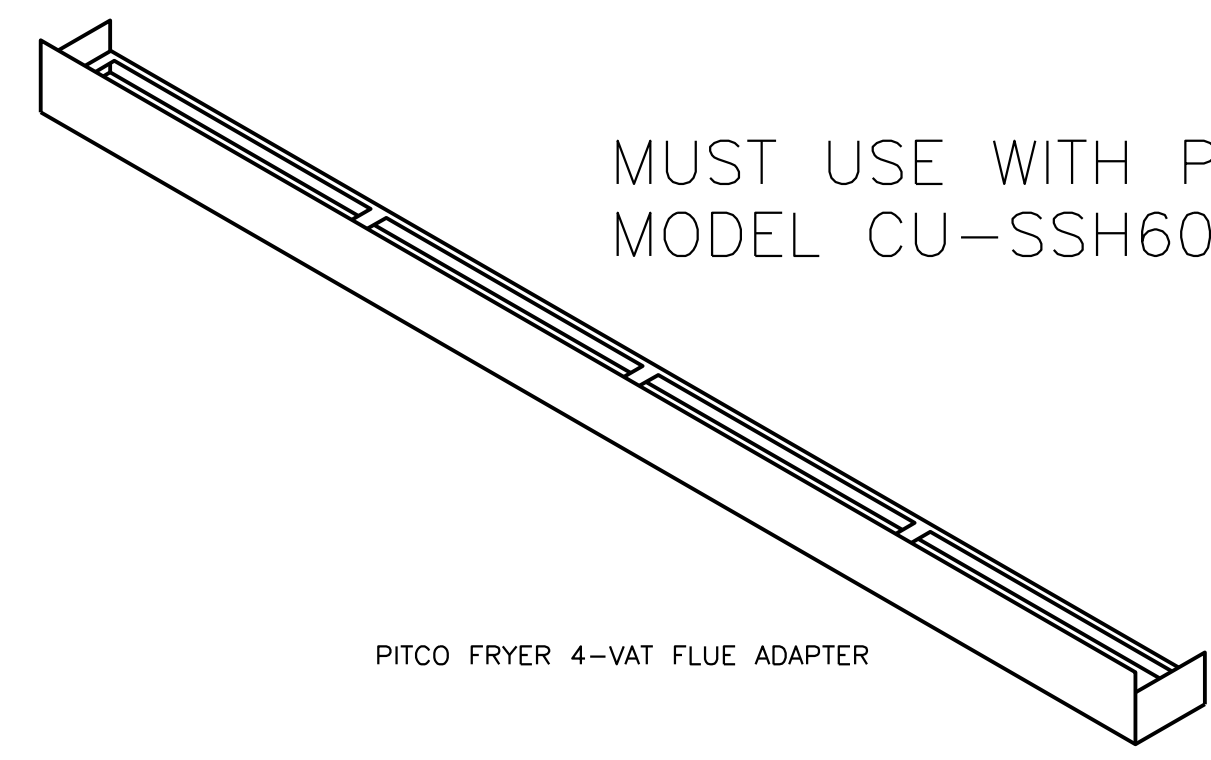
UL/CUL 762 Listed - "Power Ventilators for Rest. Exh. Appliances"
 Switch, NEMA 1, Toggle, Shipped with unit
 Larger curb cap size - 26" square
 Roof curb-Galv., GPF-26-G28, Undersized 1.5" total
 Hinged Base (Attached)
 Curb Seal (Attached)
 Clean-out Port
 Grease Trap with Drain Connection (FN 475538)
 Heat Baffle (Attached)

4-VAT FRYER BATTERY

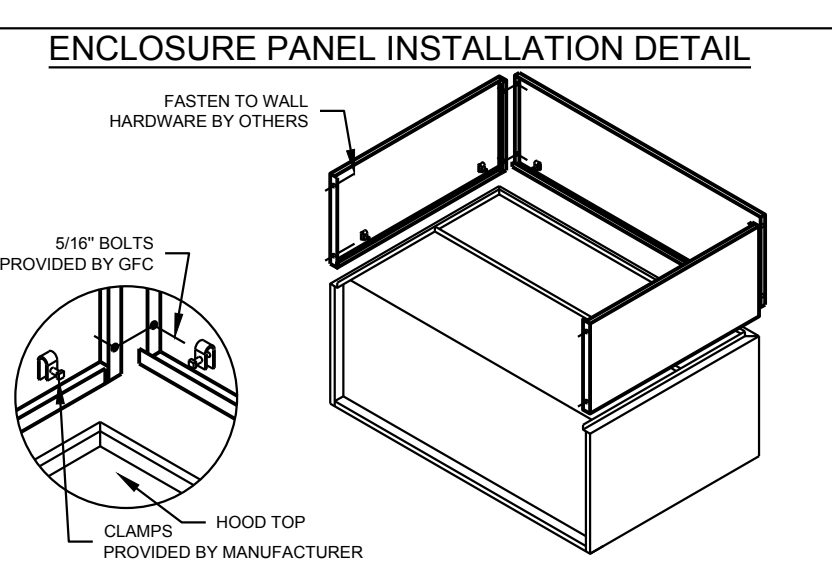


FOOD SERVICE EQUIPMENT #59

MUST USE WITH PITCO MODEL CU-SSH60W



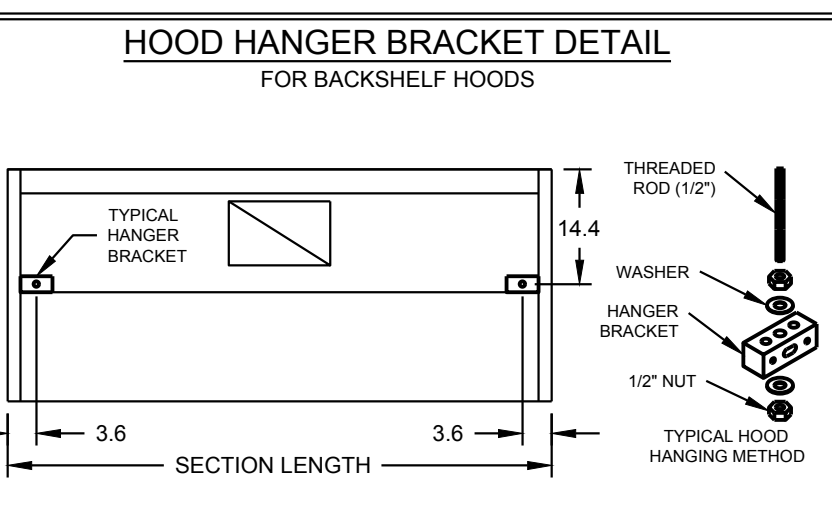
PITCO FRYER 4-VAT FLUE ADAPTER



HOOD HANGING HEIGHT FOR FIRE SYSTEMS
 VERIFICATION OF HOOD HANGING HEIGHT ABOVE FINISHED FLOOR (A.F.F.) IS REQUIRED FOR CORRECT PLACEMENT OF FIRE SYSTEM NOZZLES.

RECOMMENDED HANGING HEIGHT = 60" FROM FINISHED FLOOR TO LOWER FRONT EDGE OF HOOD.

OTHER HANGING HEIGHT = _____" FROM FINISHED FLOOR TO LOWER EDGE OF HOOD.



GENERAL DRAWING NOTES

Verify building entry conditions or limitations for equipment access to space.

Verify type and height of finished ceiling and if hood(s) may extend above finished ceiling (if required).

Seismic installation and bracing of equipment is by others.

Greenheck will not accept liability for problems that result from sub-standard installation, including field electrical wiring that deviates from supplied diagrams, job site conditions (ductwork, fuel types and structural conditions) that GFC has not been notified of at the time of ordering. Or use of this equipment other than that for which it is designed.

It is the responsibility of the purchaser to hire qualified personnel for installation and start-up of all equipment. Installation and start-up information is shipped with all equipment via the installation, Operation and Maintenance Manual (OM), also included is a troubleshooting guide. Have all start-up info available prior to any warranty claims and/or factory technical support.

VENTILATION SYSTEM NOTES

Greenheck ventilators are designed in compliance with all national codes: NFPA # 96, national electric code, BOCA, uniform mechanical code, international mechanical code, and southern building conference. See national evaluation report #436 for allowable values, and/or conditions of use concerning material presented in this document. Local codes may vary. It is the responsibility of the purchaser to submit drawings to local authorities.

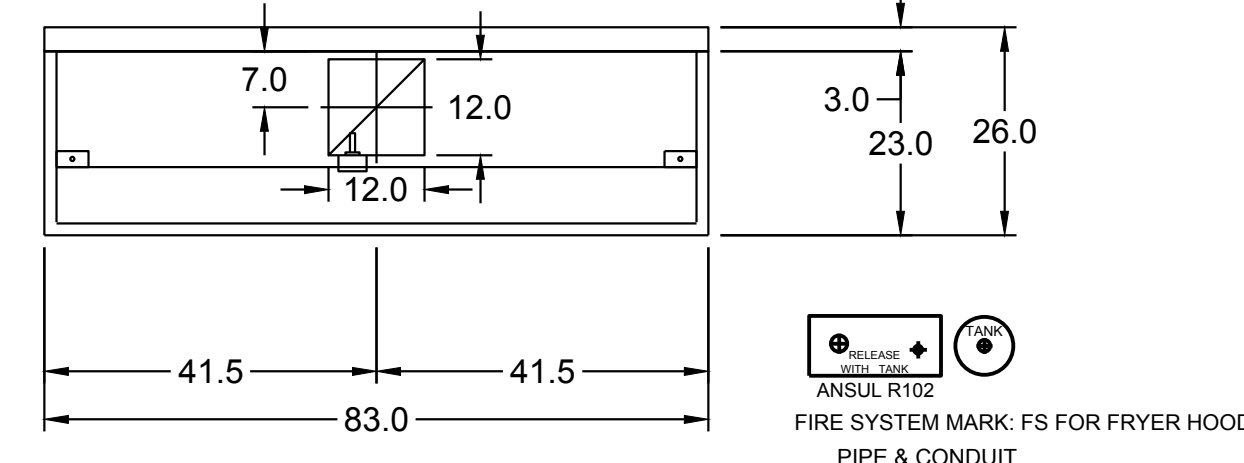
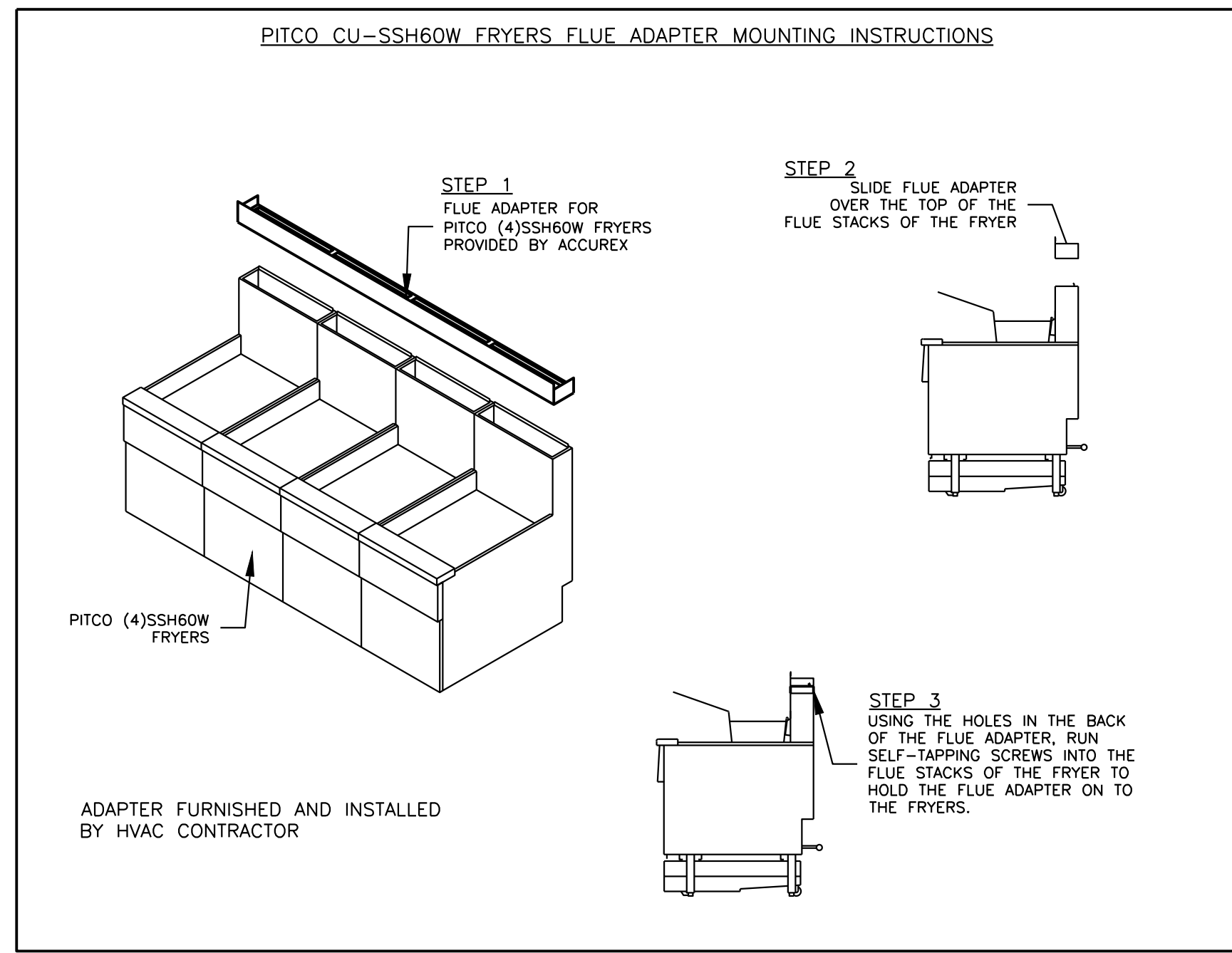
Exhaust and supply air volumes are to be maintained within -5% to +10% tolerance of values indicated. Static pressure(s) indicated are for the ventilator at the duct connection(s) only.

The grease filter face velocities are based on the manufacturer's recommendations for maximum grease extraction, inlet opening air velocities for waterwash, dry cartridge and high velocity cartridge filters manufactured by Greenheck are designed to deliver maximum grease extraction.

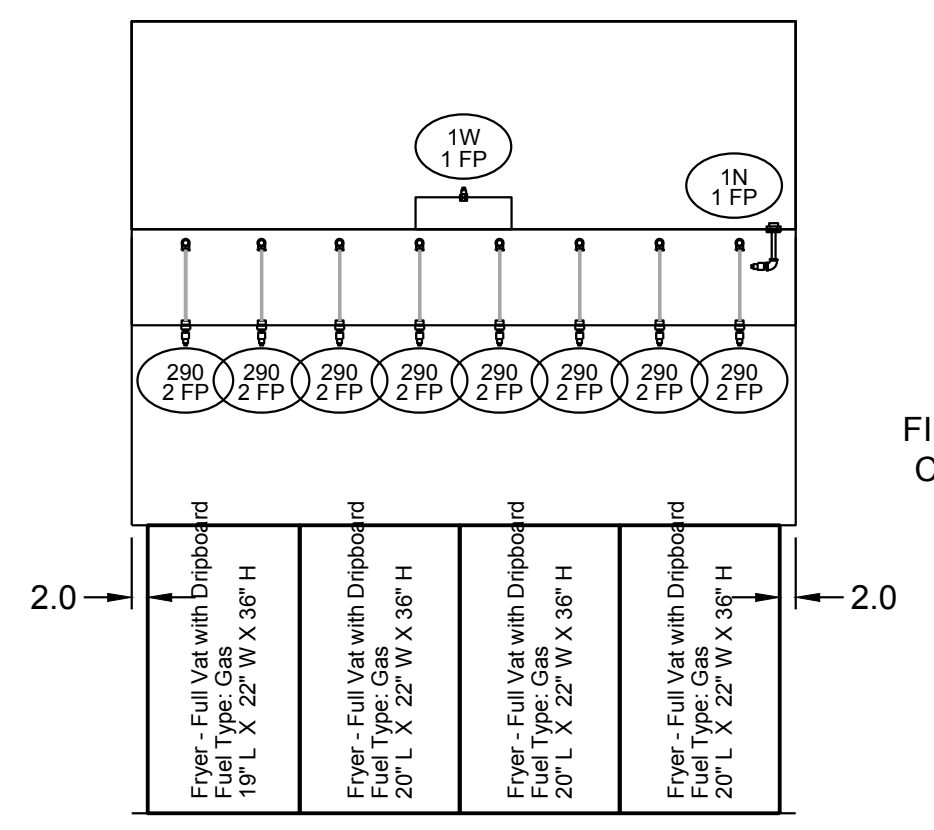
Hoods installation (by others unless otherwise noted) shall be in accordance with NFPA # 96 and applicable building codes.

PROPRIETARY INFORMATION NOTICE

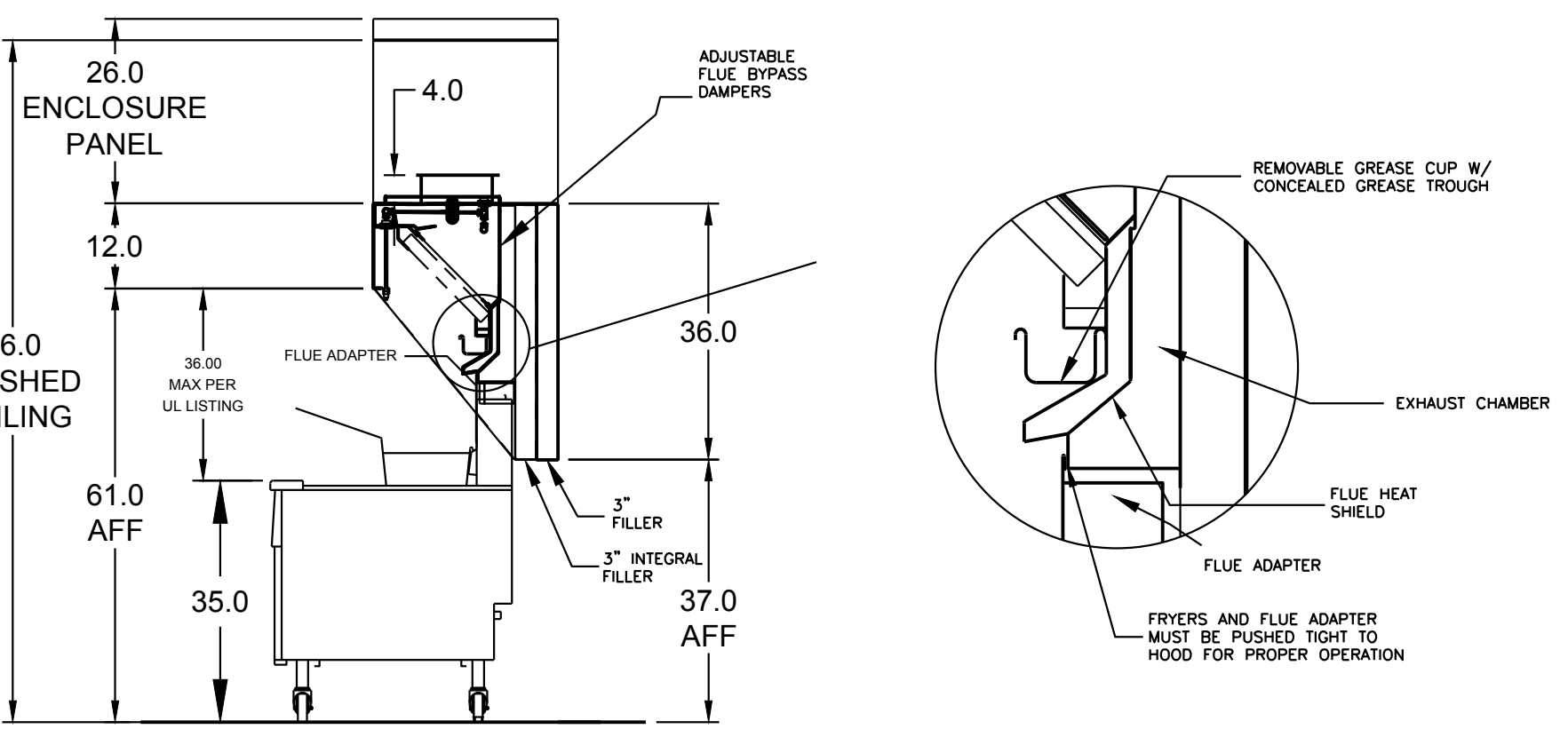
This document is and contains confidential trade secret information of the company and remains property of the company and is to be returned upon request. Neither it nor information it contains may be reproduced or disclosed to persons not having a need-to-know consistent with the purpose of the loan document without written permission.



MARK: ITEM #59 PLAN VIEW



MARK: ITEM #59 ELEVATION VIEW



MARK: ITEM #59 SECTION VIEW

ANSUL R102 (WET CHEMICAL) FIRE PROTECTION SYSTEM - MODEL FSSC

CONTROL PANEL

1. STAINLESS STEEL ENCLOSURE
2. AGENT STORAGE TANK
3. EXPULSION GAS CARTRIDGE
4. ANSUL AUTOMAN RELEASE
5. REGULATOR

WIRING DIAGRAMS
 W/DPDT MICRO SWITCH

DPDT SWITCHES PROVIDED BY MANUFACTURER MAY BE WIRED TYPICAL EXHAUST APPLIANCES WITH LOCAL CODES AND EQUIPMENT SUPPLIED AS THE CONNECTION NEEDED FOR YOUR INSTALLATION.

CONNECTION TO BUILDINGS ALARM

CONNECTION TO COOKING EQUIPMENT SHUT DOWN

CONNECTION TO FAN SHUT DOWN

NOTES:

Wet chemical fire protection system to be Ansul R-102, designed in compliance with UL 300 requirements.

- Verification of all cooking equipment make, model and location required for all fire protection systems.
- All fire system piping is standardly to the right end of the hood unless a wall is located on the right end.
- Ansul Automan Release to be located within 60" of hood.

The basic fire system will include the following:

- Gas shut-off valve, if required, to be supplied by Manufacturer (up to 2" diameter as standard), and installed by a licensed plumber.
- Alarm switch to be supplied by Manufacturer for connection to, but not limited to, building alarm system(s), exhaust and supply fans and electrical power shut down. Field wiring and connections to be performed by a licensed electrician.

The basic fire system does NOT include the following:

- Full dump test other than what is specified per the installation manual, or to satisfy a state or local code. Permit and testing fees are not included unless noted under the equipment schedule for the fire system.
- More than two trips to the lobby or special transportation, or overnight lodging requirements in remote areas. Normal travel distance is first 50 mi. (80.5 km) from office.
- Special classes or additional labor for access to security sensitive areas.
- Installation of gas shut-off valve.
- Special drawings required to satisfy state or local code. Plan examination fees, PE or FS Approval Stamp.
- Union labor, Government labor, or Prevailing wages required for final field hook-up.
- Any and all electrical components/connections required to shut down fans, shut off device for electric cooking equipment (start up breaker), or activate an alarm system, etc.
- Any dismantling or reassembly required to gain access to the fire suppression piping located on the top of the hood.
- Rough-in hidden conduit for remote pull station or gas valve (flush mounted pull station).
- Installation of more than (1) remote pull stations or distances greater than 20 ft (6.1M).
- Plans or labor required to correct piping due to cooking equipment changes or deviation from plans. OR Any charges for missing or additional parts other than those indicated on the Fire Suppression Detail.

NOTES:

1. DENOTES FIELD INSTALLATION.
2. DENOTES FACTORY INSTALLATION.
3. DO NOT USE BLACK WIRE ON SNAP-ACTION SWITCH IN NORMAL INSTALLATION. BLACK WIRE TO BE USED ONLY FOR EXTENSIVE ALARM LIGHT CIRCUITS, ETC.

CONSTRUCTION COMPLIES WITH NFPA 96

Thank you for your interest in Accurex

SUBMITTAL

Please return one approved print to your Greenheck Representative including signature, date, and answers to all submittal "verify" notes and questions. Fabrication will not begin until after approved drawings are received.

APPROVED AS SUBMITTED
 APPROVED AS NOTED
 REJECTED - REVISE AND RESUBMIT

SIGNATURE _____ DATE _____

REV DESCRIPTION DATE

ACCUREX

TITLE: CULVER'S MASTER TEMPLATE

SCALE: 1/24

C28805B

THIS DRAWING AND ALL INFORMATION CONTAINED HEREIN ARE THE SOLE, CONFIDENTIAL AND EXCLUSIVE PROPERTY OF ARCHITECTURAL CONCEPTS. PUBLICATION OF THIS DRAWING IS LIMITED SOLELY TO THE SPECIFIC PROJECT AND/OR SITE NOTED HEREIN. REPRODUCTION, PUBLICATION, REUSE OR MODIFICATION OF THIS DOCUMENT IN WHOLE OR IN PART IS EXPRESSLY PROHIBITED WITHOUT PRIOR WRITTEN CONSENT OF ARCHITECTURAL CONCEPTS.

DATE	REVISION
04-28-2023	FOR CONSTRUCTION

PROPOSED RENOVATION FOR:

1180 WEST SUPERIOR STREET
 WAYLAND, MI 49348

ARCHITECTURE
 PLANNING
 ENGINEERING

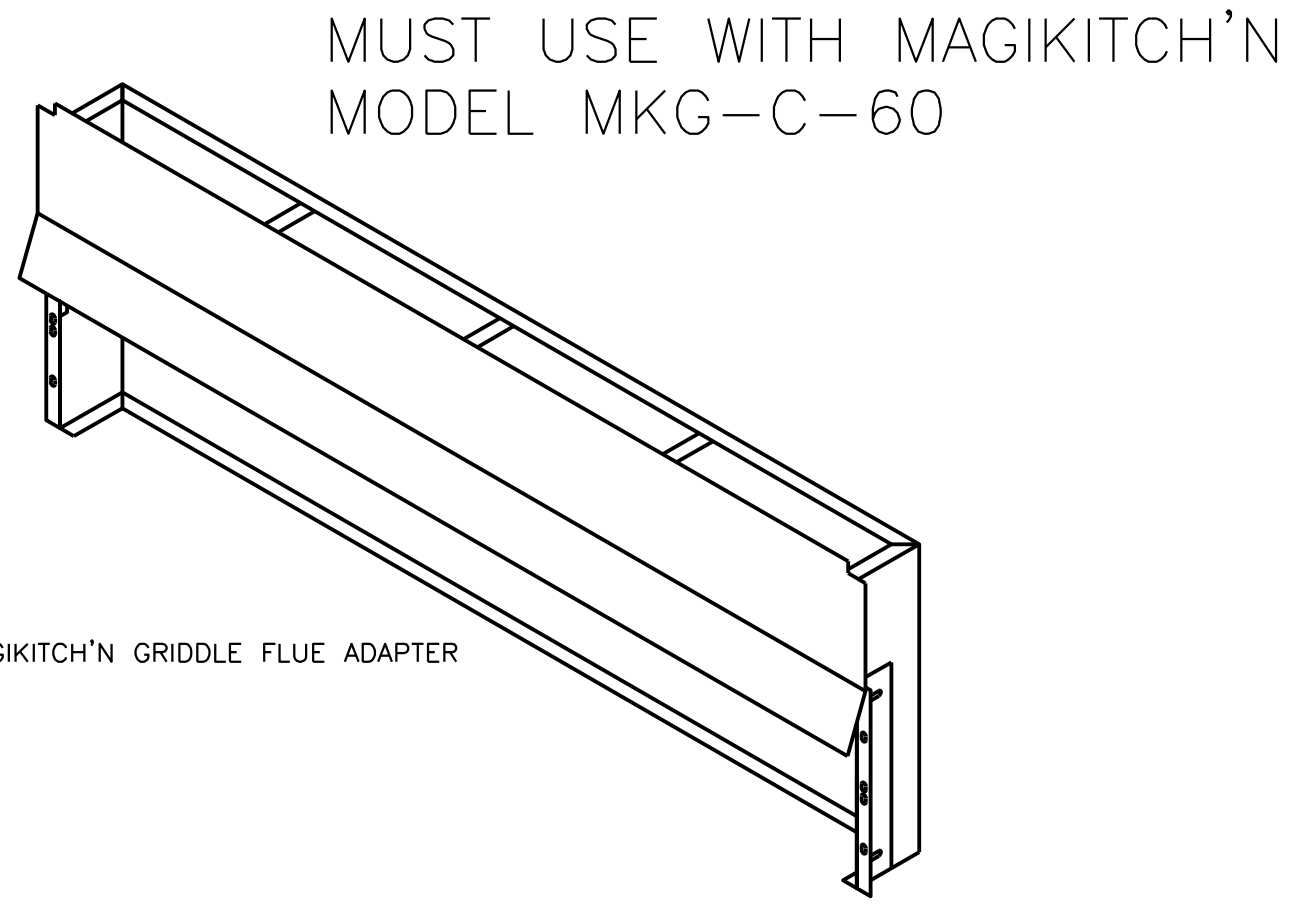
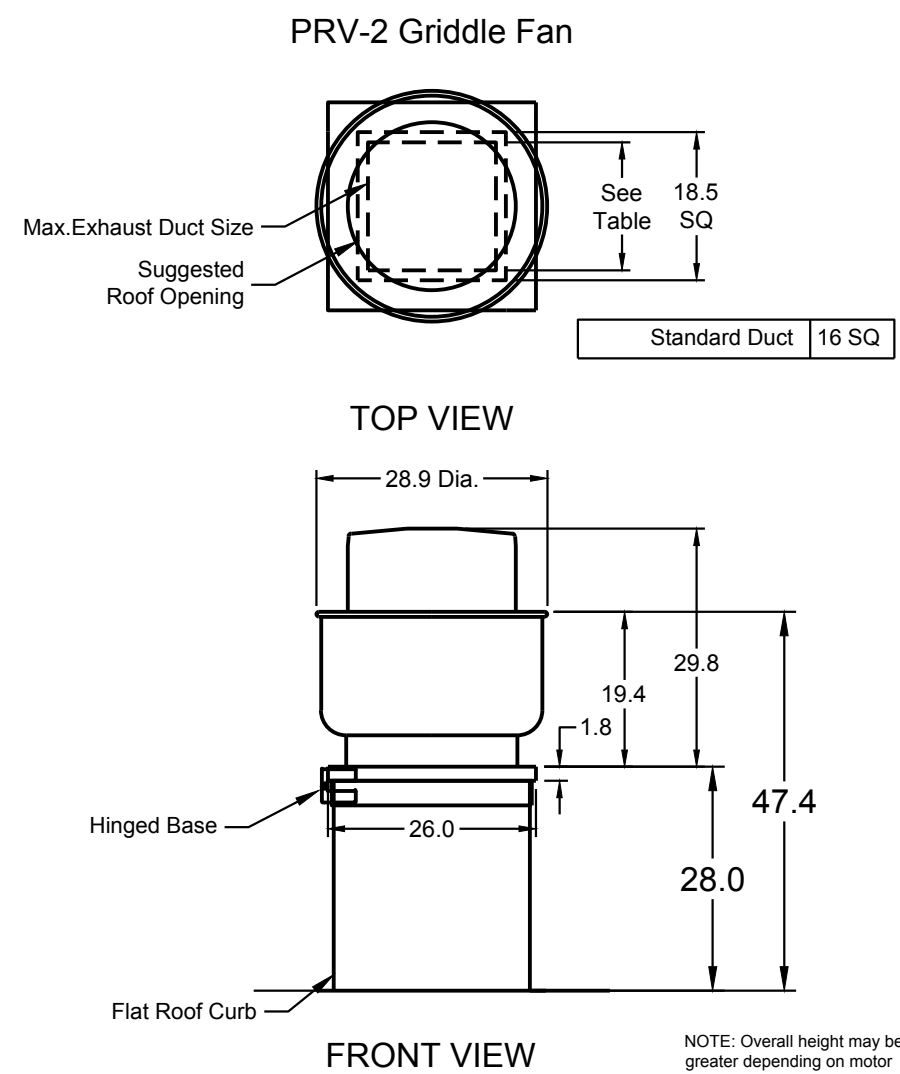
6650 CROSSING DRIVE, S.E.
 GRAND RAPIDS, MI 49508
 (616) 554-1222
 FAX (616) 554-1225

DATE	PROJECT No.
ARPL 28, 2023	22-38
SHEET No.	M-4



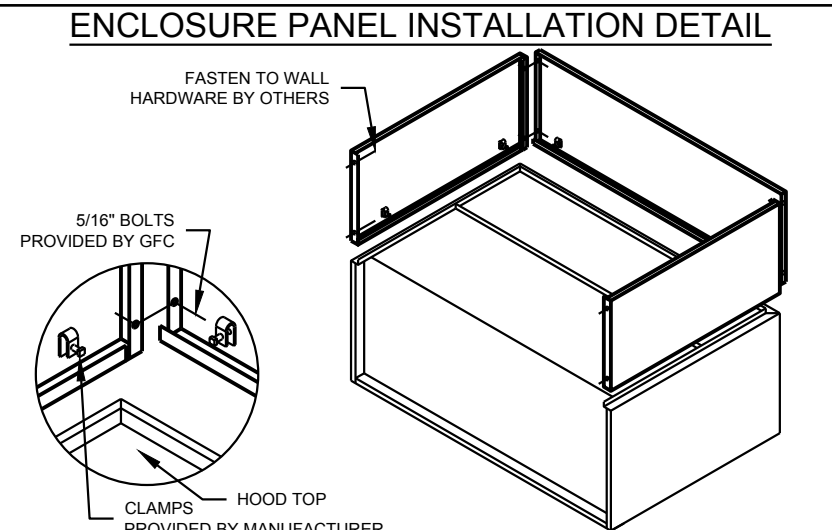
EQUIPMENT SCHEDULE

TYPE 1 KITCHEN HOOD										MARK: ITEM#49		
HOOD NO.	ACCUREX MODEL STYLE / CONFIGURATION	HOOD DIMENSIONS			GREASE CUP OR DRAIN	HOOD TEMP. RATING	TOTAL WEIGHT	SECTION LOCATION	MARK: ITEM#49			
		SECTION LENGTH	WIDTH	HEIGHT					MARK: ITEM#49	MARK: ITEM#49		
1	SINGLE WALL EXHAUST ONLY LOW PROXIMITY	64 IN.	TOP 23 IN. FRONT 12 IN. BOT 8 IN. BACK 36 IN.	RIGHT	600 DEG F	136.0 LBS.	SINGLE					
ILLUMINATION DETAILS										GREASE FILTRATION DETAILS		
HOOD NO.	FIXTURE TYPE	BULB / LAMP INFO	QTY	INTENSITY FT CANDLES	TYPE / MODEL MATERIAL	QTY	LENGTH	HEIGHT				
1	NONE	NA	0 / 0 IN.	CC	GREASE GRABBER STAINLESS STEEL	4	16 IN.	16 IN.				
EXHAUST PLENUM COLLARS										VELOCITY (FT/MIN)		
HOOD SECTION #	COLLAR #	DISTANCE TO END (IN.)	WIDTH (IN.)	LENGTH (IN.)	DIAMETER (IN.)	VOLUME (CFM)	S.P. (IN. WC)	VELOCITY (FT/MIN)				
1	1.1	32	12	12	NA	1500	1.918	1500				
TOTAL EXHAUST CFM - SECTION 1							1500		= 281 CFM / FT			
OPTIONS AND ACCESSORIES												
430 STAINLESS STEEL WHERE EXPOSED UL 710 LISTED W/ OUT EXHAUST FIRE DAMPER - UL #R26625 BACK NON-INTEGRAL AIR SPACE - 3 IN WIDE 26 IN HIGH CEILING ENCLOSURES - FRONT LEFT RIGHT - FIELD INSTALLED FACTORY MOUNTED EXHAUST COLLAR(S) THIS HOOD IS PART OF A TEMPERATURE INTERLOCK CONTROL SYSTEM INCLUDES PERFORMANCE ENHANCING LIP (PEL) TECHNOLOGY STANDING SEAM CONSTRUCTION FOR SUPERIOR STRENGTH EMBOSSED STAINLESS STEEL FINISH FOR HIGH CORROSION RESISTANCE EQUIPMENT SPECIFIC S/S FLUE ADAPTER												
SPECIAL DESIGN REQUESTS												
SDR #K1100145 - FLUE BYPASS HOOD												
FIRE SUPPRESSION SYSTEM												
MARK: FS FOR GRILL HOOD												
MANUFACTURER / MODEL	SUPPRESSANT TYPE	FLOW POINTS	SUPPLY LINE	DETECTION	MOUNTING							
ANSUL R102 WET CHEMICAL	8 UTILIZED 11 AVAILABLE	CONTINUOUS	FUSIBLE LINK	RIGHT END REMOTE MOUNTED								
FULL INSTALLATION (INCLUDES PRE-PIPED HOODS) WITH DETECTION AND FACTORY COORDINATED INSTALL CHROME SLEEVES FOR FACTORY PROVIDED APPLIANCES DROPS - INCLUDED SUPPRESSION AGENT - INCLUDED - 3 GAL. - (113 TANK(S)) GAS VALVE - INCLUDED - MECHANICAL SHUTOFF VALVE, SUPPLIED UP TO 2" REMOTE PULL STATION - STANDARD - INSTALLATION AT SINGLE POINT OF EGRESS METAL BLOW-OFF CAPS - INCLUDED FIRE SYSTEM PERMIT - REQUIRED - FEE INCLUDED 360°F. FUSIBLE LINK OR AS TESTED AND INSTALLED BY LOCAL INSTALLER PER UL MANUAL FIRE SYSTEM PROTECTED HOOD(S) (UL 300) MARK NAME: SECTION(S)												
GRILL HOOD SECTION 1 - (LENGTH 64.0 IN.) - LOW PROXIMITY HOOD - GREASE GRABBER FILTRATION SYSTEM												
Belt Drive Upblast Centrifugal Roof Exhaust Fan												
MARK: PRV-2												
Qty	Accurex Model	Volume (CFM)	SP (in wg)	FRPM	Operating Power (hp)	Weight (Lb.)	Size (In)	V/CI/P	Endc.	Motor	Winding	FLA
1	XRLUB-160XP-15	1500	2.337	2,411	1.29	171	1.5	208/0/0/3	CP	1725	1	6.6
OPTIONS AND ACCESSORIES												
UL/ULC 762 Listed - "Power Ventilators for Rest. Exh. Appliances" Switch: NSF (1) (PN 11250-3-20) Toggle, Shipped with unit Larger curb cap size - 26" Square Roof curb-Galv., GPF-26-G28, Under sized 1.5" Total Hinged Base (Attached) High Temp Curb Seal Rated for Continuous duty at 2000F (Attached) Clean-out Port Grease Trap with Drain Connection (PN 475538) Heat Baffle (Attached) Bearings with Grease Filings, L10 life of 100,000 hrs (L50 avg. life 500,000 hrs)												



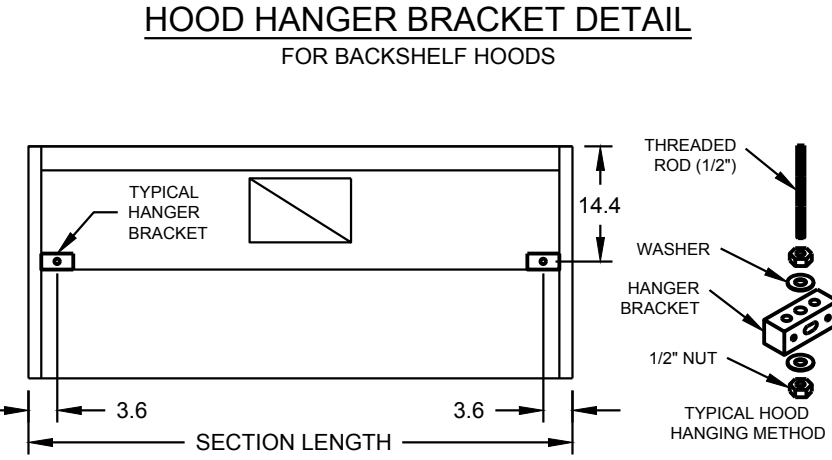
60" MAGIKITCH'N GRIDDLE FLUE ADAPTER

MUST USE WITH MAGIKITCH'N MODEL MKG-C-60



HOOD HANGING HEIGHT FOR FIRE SYSTEMS
VERIFICATION OF HOOD HANGING HEIGHT ABOVE FINISHED FLOOR (A.F.F.) IS REQUIRED FOR CORRECT PLACEMENT OF FIRE SYSTEM NOZZLES.

- RECOMMENDED HANGING HEIGHT = 60" FROM FINISHED FLOOR TO LOWER FRONT EDGE OF HOOD.
- OTHER HANGING HEIGHT = _____" FROM FINISHED FLOOR TO LOWER EDGE OF HOOD.



GENERAL DRAWING NOTES

Verify building entry conditions or limitations for equipment access to space.

Verify type and height of finished ceiling and if hood(s) may extend above finished ceiling (if required).

Seismic installation and bracing of equipment is by others.

Greenheck will not accept liability for problems that result from sub-standard installation, including field electrical wiring that deviates from supplied diagrams, jobsite conditions (ductwork, fuel types and structural conditions) that GFC has not been notified of at the time of ordering, or use of this equipment other than that for which it is designed.

It is the responsibility of the purchaser to hire qualified personnel for installation and start-up of all equipment. Installation and start-up information is shipped with all equipment via the Installation, Operation and Maintenance Manual (IOM), also included is a troubleshooting guide. Have all start-up info available prior to any warranty claims and/or factory technical support.

VENTILATION SYSTEM NOTES

Greenheck ventilators are designed in compliance with all national codes: NFPA # 96, national electric code, BOCA, uniform mechanical code, international mechanical code, and southern building conference. See national evolution report #436 for allowable values, and/or conditions of use concerning material presented in this document. Local codes may vary. It is the responsibility of the purchaser to submit drawings to local authorities.

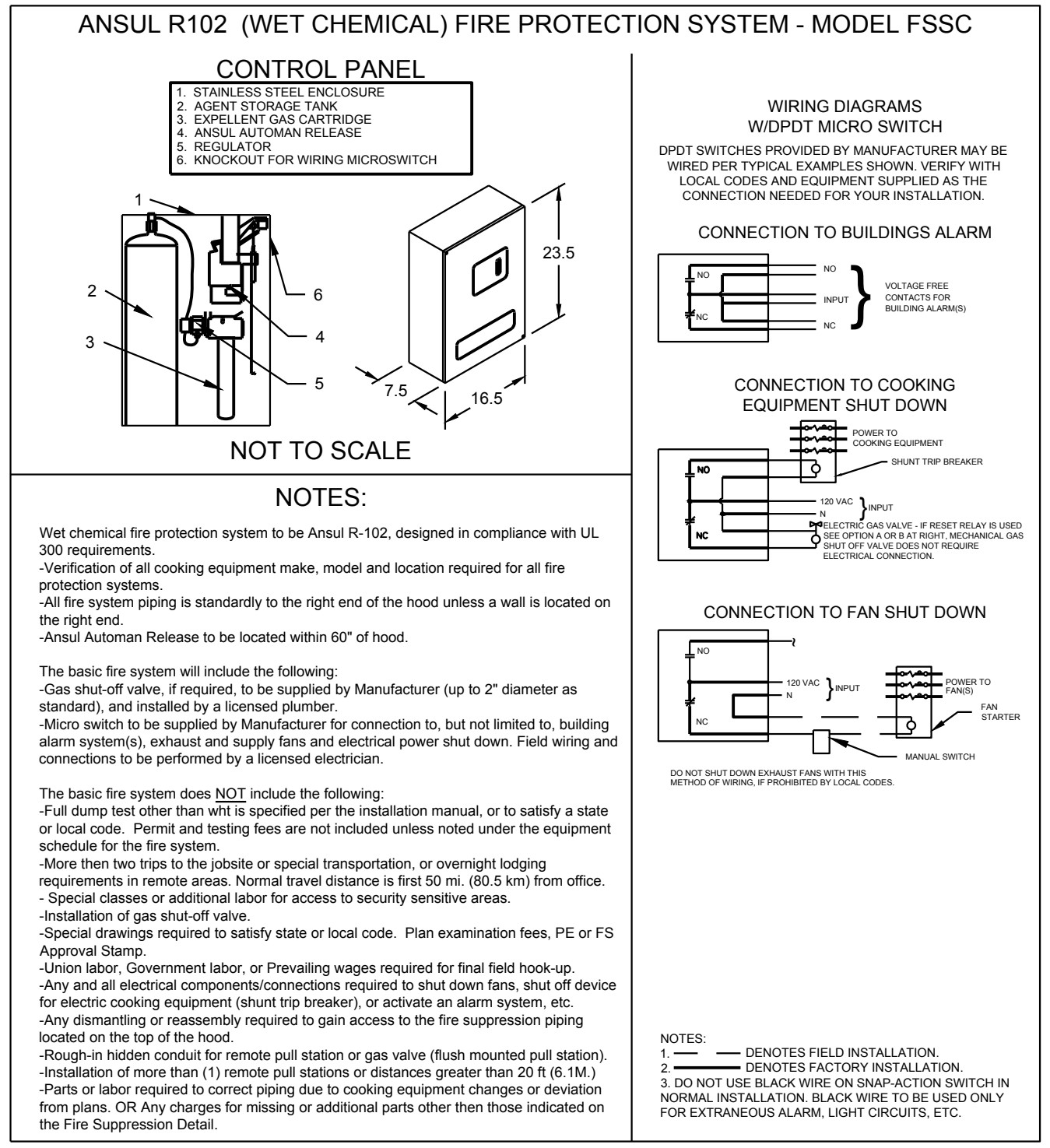
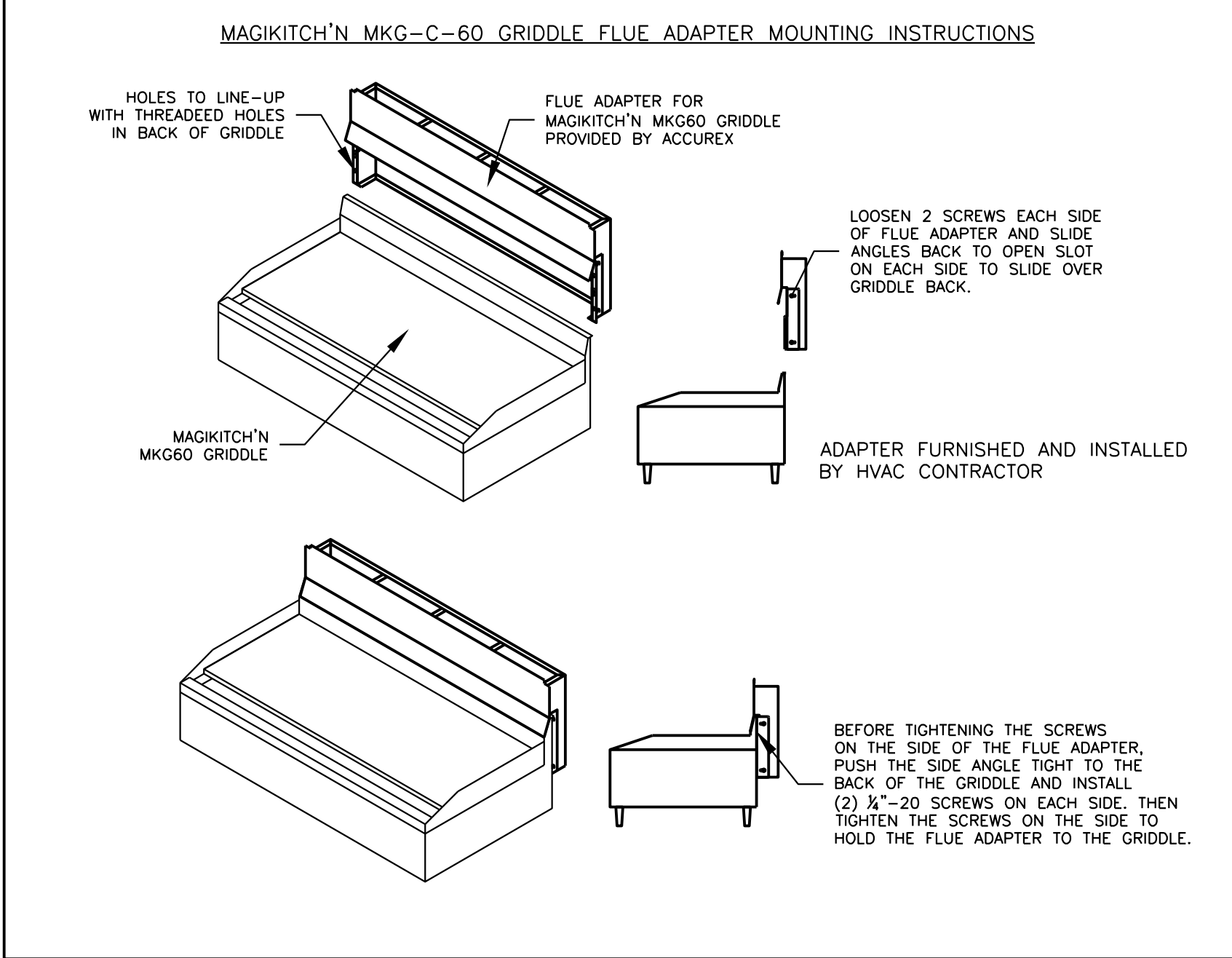
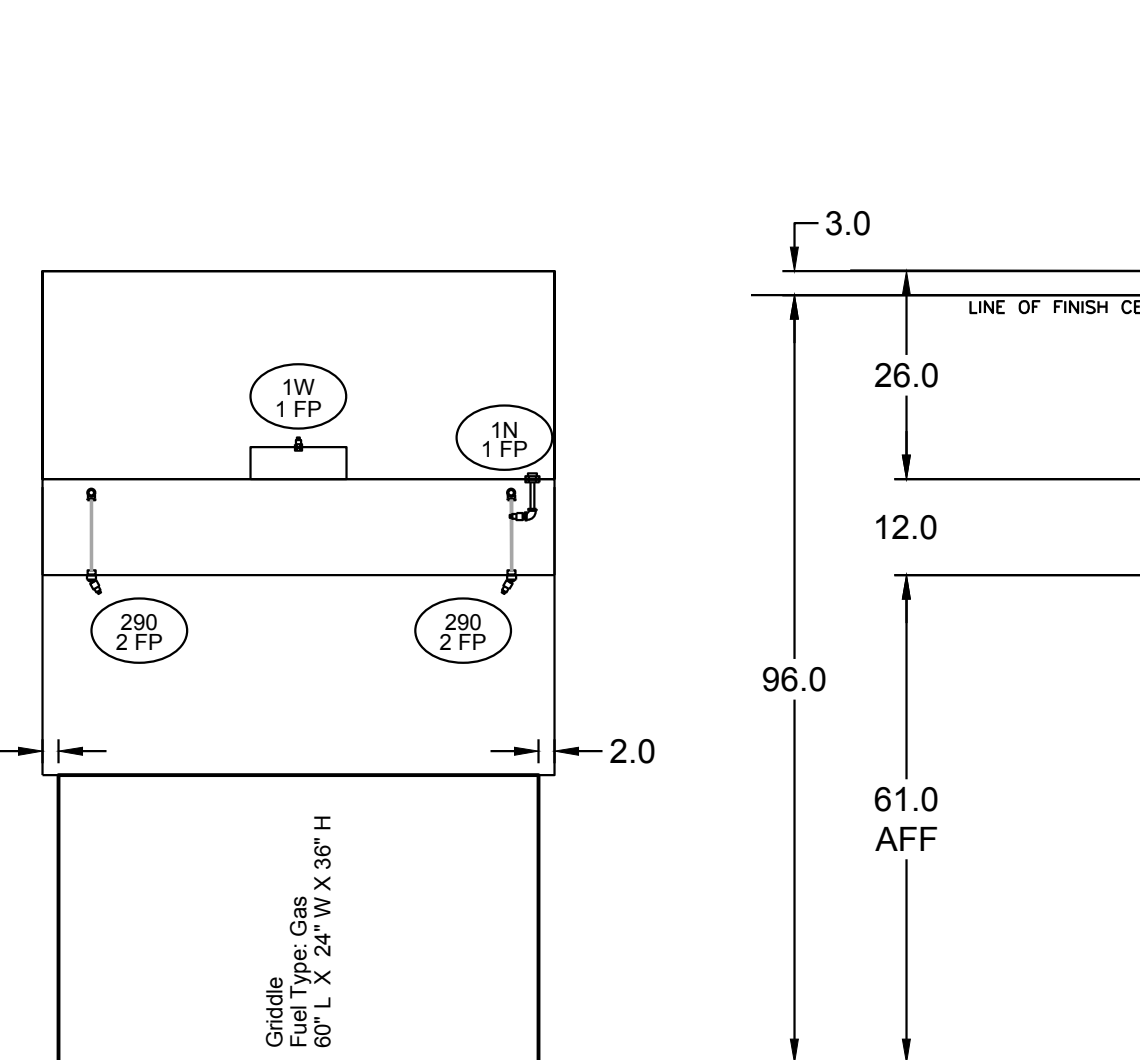
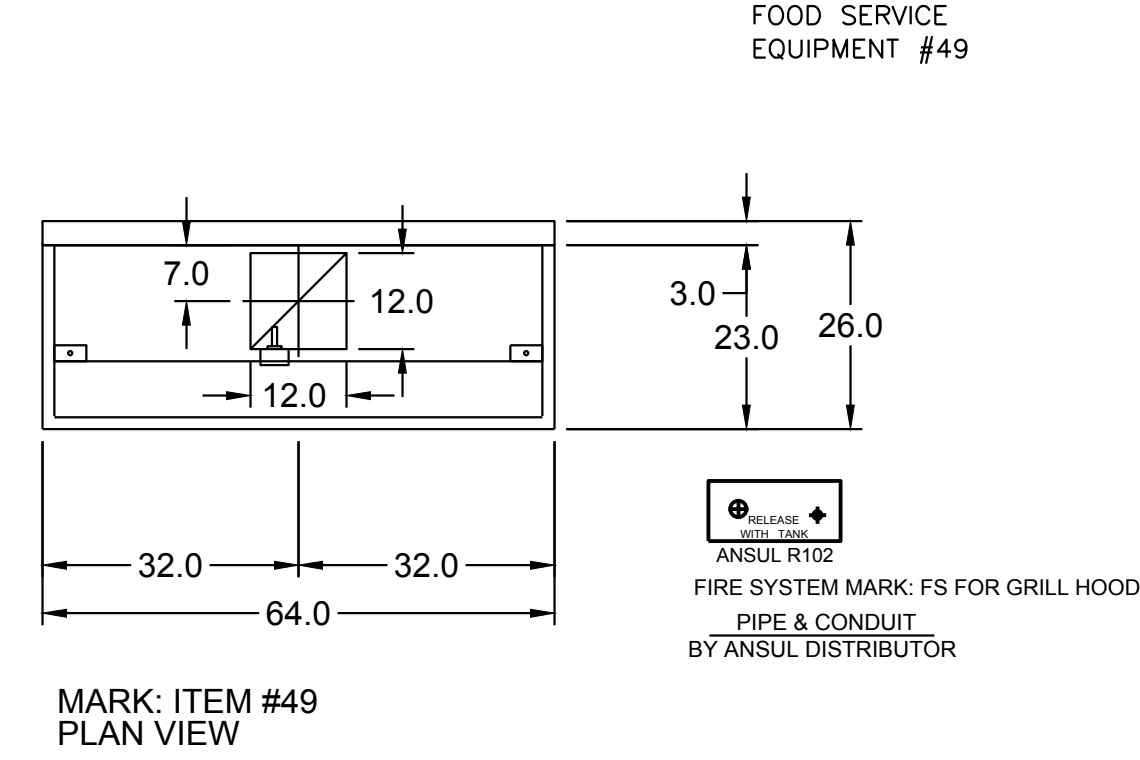
Exhaust and supply air volumes are to be maintained within -5% to +10% tolerance of values indicated. Static pressure(s) indicated are for the ventilator at the duct connection(s) only.

The grease filter face velocities are based on the filter manufacturers recommendations for maximum grease extraction. Inlet opening air velocities for waterwash, dry cartridge and high velocity cartridge filters manufactured by Greenheck are designed to deliver maximum grease extraction.

Hoods installation (by others unless otherwise noted) shall be in accordance with NFPA # 96 and applicable building codes.

PROPRIETARY INFORMATION NOTICE

This document is and contains confidential trade secret information of the company and remains property of the company and is to be returned upon request. Neither this information is contains may be reproduced or disclosed to persons not having a need-to-know consistent with the purpose of the loan document without written permission.



Thank you for your interest in Accurex

SUBMITTAL

Please return one approved print to your Greenheck Representative including signature, date, and answers to all submitted 'verify' notes and questions. Fabrication will not begin until after approved drawings are received.

APPROVED AS SUBMITTED
 APPROVED AS NOTED
 REJECTED - REVISE AND RESUBMIT

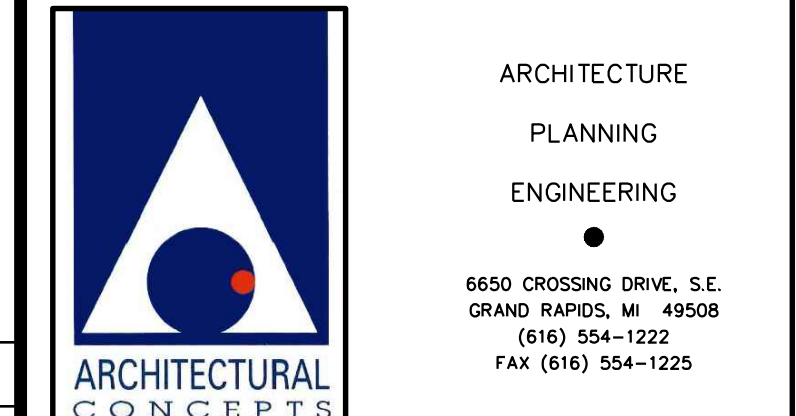
SIGNATURE _____ DATE _____

THIS DRAWING AND ALL INFORMATION CONTAINED HEREIN ARE THE SOLE, CONFIDENTIAL AND EXCLUSIVE PROPERTY OF ARCHITECTURAL CONCEPTS. PUBLICATION OF THIS DRAWING IS LIMITED SOLELY TO THE SPECIFIC PROJECT AND/OR SITE NOTED HEREIN. REPRODUCTION, PUBLICATION, REUSE OR MODIFICATION OF THIS DOCUMENT IN WHOLE OR IN PART IS EXPRESSLY PROHIBITED WITHOUT PRIOR WRITTEN CONSENT OF ARCHITECTURAL CONCEPTS.

DATE	REVISION
04-28-2023	FOR CONSTRUCTION



1180 WEST SUPERIOR STREET
WAYLAND, MI 49348



DATE APRIL 28, 2023	PROJECT No. 22-38
REV DESCRIPTION	SHEET No. M-3

REV DESCRIPTION _____ DATE _____

ACCUREX

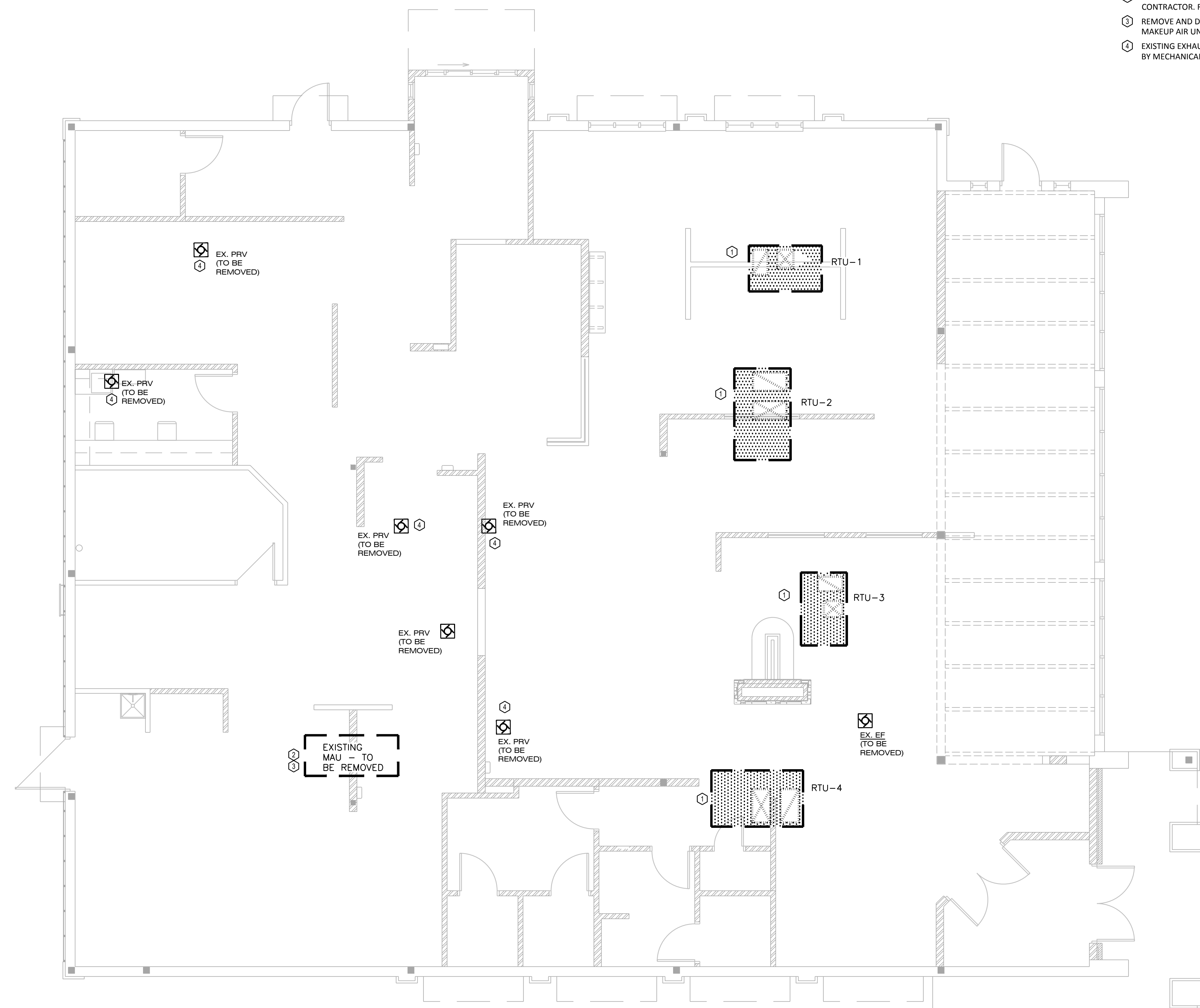
CULVER'S MASTER TEMPLATE

1/24

C28805A

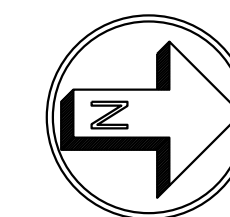
MECHANICAL DEMOLITION KEYNOTES

- ① EXISTING ROOFTOP UNIT TO BE REMOVED AND DISPOSED OF BY MECHANICAL CONTRACTOR. MAINTAIN EXISTING CURB AND SUPPLY & RETURN DROPS FOR CONNECTION TO NEW ROOFTOP UNITS
- ② EXISTING MAKEUP AIR UNIT TO BE REMOVED AND DISPOSED OF BY MECHANICAL CONTRACTOR. ROOF OPENING TO BE PATCHED BY GC.
- ③ REMOVE AND DISPOSE OF ALL MAKEUP AIR DUCTWORK AND DIFFUSERS ASSOCIATED WITH MAKEUP AIR UNIT.
- ④ EXISTING EXHAUST FAN AND ASSOCIATED DUCTWORK TO BE REMOVED AND DISPOSED OF BY MECHANICAL CONTRACTOR. ROOF OPENING TO BE PATCHED BY GC.



**ROOFTOP HVAC
DEMOLITION PLAN**

SCALE: 3/16" = 1'-0"



THIS DRAWING AND ALL INFORMATION CONTAINED HEREIN ARE THE SOLE, CONFIDENTIAL AND EXCLUSIVE PROPERTY OF ARCHITECTURAL CONCEPTS. PUBLICATION OF THIS DRAWING IS LIMITED SOLELY TO THE SPECIFIC PROJECT AND/OR SITE NOTED HEREIN. REPRODUCTION, PUBLICATION, REUSE OR MODIFICATION OF THIS DOCUMENT IN WHOLE OR IN PART IS EXPRESSLY PROHIBITED WITHOUT PRIOR WRITTEN CONSENT OF ARCHITECTURAL CONCEPTS.

DATE	REVISION
04-28-2023	FOR CONSTRUCTION

PROPOSED RENOVATION FOR:



1180 WEST SUPERIOR STREET
WAYLAND, MI 49348



ARCHITECTURE
 PLANNING
 ENGINEERING
 6650 CROSSING DRIVE, S.E.
 GRAND RAPIDS, MI 49508
 (616) 554-1222
 FAX (616) 554-1225

DATE APRIL 28, 2023	PROJECT No. 22-38
------------------------	----------------------

SHEET No.	M-1D
-----------	------