

Report By:

National TAB
1329 E. KEMPER ROAD
SUITE 4210
CINCINNATI, OH 45246



Report: TAB

Function: Test, Adjust, & Balance

Date: 10/28/2024

Completed By: National TAB

PROJECT

**10-28-24 KROGER #024-721 - LEXINGTON,
KY (WIW)**

4750 HARTLAND PKWY

LEXINGTON, KY 40515

Client

Kroger Division 024

National TAB

Project: 09-02-24 CAVA MISSION, KS (MERRIAM GRAND STATION)

Table Of Contents

Section	Page #
Summary	3
Checklists	4
Remarks	11
AHU/RTU	19
GRD	23

CheckList List

- RTU CHECKLIST
- SITE PICTURES

Unit free of noticeable noise and vibration

Comment:

Yes

Units are labeled and installed on proper curb

Comment:

Yes

Unit ductwork properly installed / sealed on curb

Comment:

Yes

Pulleys are properly aligned

Comment:

Yes

Condensate lines and P-Traps installed correctly

Comment:

Yes

Disconnect Switch Installed

Comment:

Yes

Outside air dampers/Economizers installed and functioning

Comment:

Yes with the exception of RTU-5 detailed in issues.

Additional Comments or recommendations:

Comment:

None

Documentation

If issues, have NTAB team and Brinco Management been notified ?

Comment:

NTAB yes - Brinco not by the TAB tech.

If any issues, have Facilibuild issues been created explaining in detail?

Comment:

Yes

Pictures

All Issues

Comment:

Rtu 5 duct leakage at drop down. Rtu 5 economizer controller potentiometers do not actuate economizer but economizer closes when fan off. Rtu-6 oa high above design even when economizer is fully closed.

Each Piece of equipment

Comment:



10/29/2024



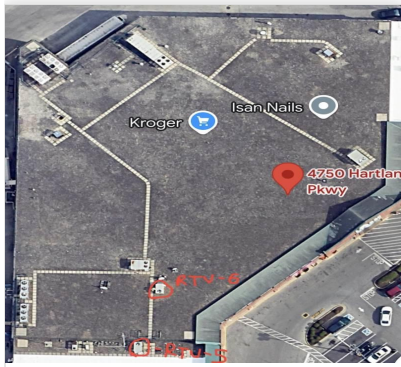
10/29/2024

Front of store

Comment:

Roof Top Layout

Comment:



12/09/2024



10/29/2024



10/29/2024



10/29/2024

Issue List

- RTU-5 Duct leakage above ceiling.
- RTU-5 Economizer controller does not actuate OA/Return damper.
- RTU-5 GRD
- RTU-5 Thermostat in mixed air compartment.
- RTU-5 Unable to meet design CFM.
- RTU-6 Has an additional diffuser.
- RTU-6 Unable to reduce OA.



Comfort. Under Control.
www.nationaltab.com

10-28-24 KROGER #024-721 - LEXINGTON, KY (WIW)

Project Issue Information

Issue Name : RTU-5 Duct leakage above ceiling.
Description : RTU-5 Duct leakage above ceiling at drop down into space; airflow can be felt and heard above ceiling.
Created By : National TAB **Assigned To :** National TAB - Will Turnbough
Status : Open
Priority : High **Asset Tag :** RTU5
Originated Date : 10/29/2024 - Cody Collett - National TAB



10-28-24 KROGER #024-721 - LEXINGTON, KY (WIW)

Project Issue Information

Issue Name : RTU-5 Economizer controller does not actuate OA/Return damper.
Description : RTU-5 Economizer controller does not actuate OA/Return damper. OA damper does fully close when fan is no longer running. Changing economizer controller setpoint does not open or close OA damper. OA is always in an approximately 10% open position.

Created By :	National TAB	Assigned To :	National TAB - Will Turnbough
Status :	Open		
Priority :	High	Asset Tag :	RTU5
Originated Date :	10/29/2024 - Cody Collett - National TAB		

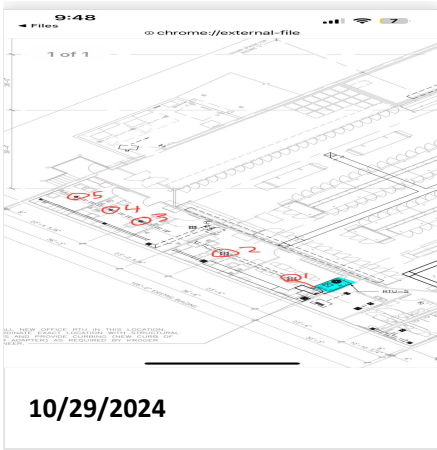


10-28-24 KROGER #024-721 - LEXINGTON, KY (WIW)

Project Issue Information

Issue Name : RTU-5 GRD
Description : RTU-5 GRD
Created By : National TAB **Assigned To :** National TAB - Will Turnbough
Status : Open
Priority : InfoOnly **Asset Tag :** RTU5
Originated Date : 10/29/2024 - Cody Collett - National TAB

Project Issue File Details





10-28-24 KROGER #024-721 - LEXINGTON, KY (WIW)

Project Issue Information

Issue Name : RTU-5 Thermostat in mixed air compartment.
Description : RTU-5 Thermostat is in mixed air compartment. Unit is not measuring temperature in the space.
Created By : National TAB **Assigned To :** National TAB - Will Turnbough
Status : Open
Priority : Medium **Asset Tag :** RTU5
Originated Date : 10/29/2024 - Cody Collett - National TAB



10-28-24 KROGER #024-721 - LEXINGTON, KY (WIW)

Project Issue Information

Issue Name :	RTU-5 Unable to meet design CFM.		
Description :	RTU-5 Unable to meet design CFM at max fan speed.		
Created By :	National TAB	Assigned To :	National TAB - Will Turnbough
Status :	Open		
Priority :	High	Asset Tag :	RTU5
Originated Date :	10/29/2024 - Cody Collett - National TAB		

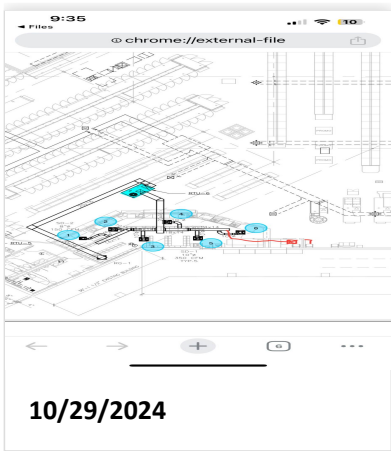
10-28-24 KROGER #024-721 - LEXINGTON, KY (WIW)

Project Issue Information

Issue Name : RTU-6 Has an additional diffuser.
Description : RTU-6 Has an additional diffuser that is not on the MSET. CFM set to 100 with guidance from westly.
Created By : National TAB **Assigned To :** National TAB - Will Turnbough
Status : Open
Priority : InfoOnly **Asset Tag :** RTU6
Originated Date : 10/29/2024 - Cody Collett - National TAB

Project Issue Response Details

- **10/29/2024 National TAB - Cody Collett**
 - PICTURE





10-28-24 KROGER #024-721 - LEXINGTON, KY (WIW)

Project Issue Information

Issue Name :	RTU-6 Unable to reduce OA.		
Description :	RTU-6 Unable to reduce OA; OA air damper fully closed.		
Created By :	National TAB	Assigned To :	National TAB - Will Turnbough
Status :	Open		
Priority :	High	Asset Tag :	RTU6
Originated Date :	10/29/2024 - Cody Collett - National TAB		



National TAB

Project: 09-02-24 CAVA MISSION, KS (MERRIAM GRAND STATION)



System/Unit: AHU/RTU

Asset: RTU1

AREA: DINING

Unit Data		
	Design	Actual
MFG	TRANE	TRANE
Serial Num	-	241811034L
Model Num	YHC120	YHJ120A3S0H07H0C0A1A
Type	RTU	RTU
Configuration	VERTICA	VERTICAL
Num OA Filters 1	-	1 METAL MESH
OA Filter Size 1	-	15X35.75
Num Final Filter 1	-	3
Final Filter Size 1	-	16X24X2
Num Final Filter 2	-	2
Final Filter Size 2	-	18X24X2

Motor Data		
	Design	Actual
Motor MFG	-	NA
Frame	-	NA
Horsepower	2.75	NA
Motor Rpm	-	NA
Phase	3	3
Rated Voltage	208	208
Rated Amperage	-	11.0

Test Data		
	Design	Actual
SF CFM	3500	3546
SF RPM	-	1074
RA CFM	2800	2835
OA CFM	700	711
RL Voltage	-	208/209/211
RL Amperage	-	2.0/1.9/2.2
SF Rotation	-	CCW
SF System SetPt	-	58%
RA Damper Position	-	68% HIGH 57% LOW
Min OA Damper Position	-	32% HIGH 43% LOW
Min OA Damper Type	-	ECONOMIZER

Performance Data		
	Design	Actual
MA Plenum SP	-	-0.24"
Fan Suction SP	-	-0.44"
Fan Discharge SP	-	0.48"
Total ESP	0.8"	0.72"
Fan Total SP	-	0.92"

General	
	Actual
Fan Rotation Correct	YES
Unit Filters Clean	NO, NEED NEW FILTERS
Condensate Drain Installed	YES

Completed By: Jacob Davidson on 09/05/2024

Notes:
FILTERS WERE EXTREMELY DIRTY. UNIT WAS BALANCED WITH FILTERS OUT.

Written By: Jacob Davidson on 09/05/2024



National TAB

Project:09-02-24 CAVA MISSION, KS (MERRIAM GRAND STATION)



AHU/RTU

Diffuser Supply (GRD)

RTU1/DINING

Asset									
Asset Name	Location	Type	Size	DESIGN CFM	AK	CFM(1)	CFM(2)	FINAL CFM	% to design
SGRD1	DINING	D	12"	450	0.775	653	587	478	106.2
SGRD2	DINING	D	12"	450	0.775	521	374	444	98.7
SGRD3	DINING	D	12"	450	0.775	482	351	453	100.7
SGRD4	DINING	D	12"	425	0.775	588	524	459	108.0
SGRD5	DINING	D	12"	425	0.775	241	378	434	102.1
SGRD6	DINING	D	12"	425	0.775	588	448	461	108.5
SGRD7	DINING	D	12"	425	0.775	233	353	404	95.1
SGRD8	HALL	B	8"	150	1	58	84	136	90.7
SGRD9	RESTROOM	B	6"	75	1	42	60	69	92.0
SGRD10	RESTROOM	B	6"	75	1	24	55	71	94.7
SGRD11	HALL	B	8"	150	1	60	86	137	91.3
Total				3500		3490	3300	3546	101.31%

Completed By: Jacob Davidson on 09/04/2024



National TAB

Project: 09-02-24 CAVA MISSION, KS (MERRIAM GRAND STATION)



System/Unit: AHU/RTU

Asset: RTU2

AREA: KITCHEN

Unit Data		
	Design	Actual
MFG	TRANE	TRANE
Serial Num	-	241811025L
Model Num	YHC120	YHJ120A3S0H07H0C0A1A
Type	RTU	RTU
Configuration	VERTICAL	VERTICAL
Num OA Filters 1	-	1 METAL MESH
OA Filter Size 1	-	15X35.75
Num Final Filter 1	-	3
Final Filter Size 1	-	16X24X2
Num Final Filter 2	-	2
Final Filter Size 2	-	18X24X2

Motor Data		
	Design	Actual
Motor MFG	-	NA
Frame	-	NA
Horsepower	2.75	NA
Motor Rpm	-	NA
Phase	3	3
Rated Voltage	208	208
Rated Amperage	-	11.0

Test Data		
	Design	Actual
SF CFM	4000	4002
SF RPM	-	1369
RA CFM	3400	3357
OA CFM	600	645
RL Voltage	-	208/209/211
RL Amperage	-	4.0/4.1/4.2
SF Rotation	-	CCW
SF System SetPt	-	74%
RA Damper Position	-	80% HIGH 70% LOW
Min OA Damper Position	-	20% HIGH 30% LOW
Min OA Damper Type	-	ECONOMIZER

Performance Data		
	Design	Actual
MA Plenum SP	-	-0.43"
Fan Suction SP	-	-0.83"
Fan Discharge SP	-	0.69"
Total ESP	0.8"	1.12"
Fan Total SP	-	1.52"

General	
	Actual
Fan Rotation Correct	YES
Unit Filters Clean	YES
Condensate Drain Installed	YES

Completed By: Jacob Davidson on 09/05/2024



National TAB

Project:09-02-24 CAVA MISSION, KS (MERRIAM GRAND STATION)



AHU/RTU

Diffuser Supply (GRD)

RTU2/KITCHEN

Asset									
Asset Name	Location	Type	Size	DESIGN CFM	AK	CFM(1)	CFM(2)	FINAL CFM	% to design
SGRD1	KITCHEN	C	10X10	400	1	434	334	364	91.0
SGRD2	KITCHEN	C	10X10	400	1	376	373	381	95.3
SGRD3	KITCHEN	C	10X10	400	1	570	380	392	98.0
SGRD4	KITCHEN	C	10X10	400	1	405	524	431	107.8
SGRD5	KITCHEN	C	10X10	400	1	444	334	379	94.8
SGRD6	KITCHEN	C	10X10	420	1	329	432	421	100.2
SGRD7	HOOD	ACPSP	129X6	780	4.193	470	872	841	107.8
SGRD8	KITCHEN	A	10"	220	1	431	257	239	108.6
SGRD9	KITCHEN	A	10"	240	1	373	269	261	108.8
SGRD10	KITCHEN	A	10"	240	1	379	267	254	105.8
SGRD11	OFFICE	A	6"	100	1	19	18	39	39.0
Total				4000		4230	4060	4002	100.05%

