

DRAWING NOTES

DRAWING H-101

- 1 PROVIDE NEW CHILLED WATER SUPPLY AND RETURN PIPING, FITTINGS, INSULATION, AND SUPPORTS AS SHOWN. FIELD ROUTE PIPING TO COORDINATE WITH EXISTING TRADES IN TUNNEL. SUPPORT FROM EXISTING CEILING AND WALL STRUCTURES.
- 2 PROVIDE OFFSETS ON THE VERTICAL PIPING THRU LEVEL 200 AND LEVEL 300 AS NECESSARY TO AVOID EXISTING PIPING, STRUCTURE, AND HVAC.

GENERAL NOTES

APPLIES TO ALL DRAWINGS OF THIS TRADE

- A FOR KEY PLAN AND DRAWING INDEX SEE COVER SHEET AND DRAWING G-000
- B FOR GENERAL NOTES, LEGEND AND SYMBOLS, SEE DRAWING H-001
- C THIS BUILDING IS PROTECTED BY FLOOD PROTECTION SYSTEMS INCLUDING FLOOD WALLS AND A GENERATOR SUPPLIED DEEP WELL PLUMBING SYSTEM IN COMPLIANCE WITH OBC 1333.15(E)(2). THE WATER LEVEL IS MAINTAINED TO 470' WITHIN THE FACILITY. THE FLOODPLAIN ELEVATION IS 498'. THE LOWEST FLOOR ELEVATION IN THIS PROJECT SPACE IS 480'. THEREFORE, THERE ARE NO SPECIAL INSTALL REQUIREMENTS.
- D ALL EQUIPMENT AND DEVICES ARE TO BE INSTALLED PER THE MANUFACTURER'S INSTRUCTIONS. COORDINATE FINAL LOCATIONS WITH THE GC AND THE ARCHITECTURAL AND STRUCTURAL DRAWINGS. MAINTAIN ALL MANUFACTURER REQUIRED CLEARANCES. PROVIDE ALL STARTUP SERVICES AND ENSURE EACH HVAC EQUIPMENT AND SYSTEM IS FULLY FUNCTIONAL.
- E PROVIDE COMPLETE AIR AND WATER BALANCE AND ADJUSTMENT OF ALL HVAC EQUIPMENT AND ASSOCIATED DUCT AND PIPE DISTRIBUTION SYSTEMS WITH CERTIFIED AABC REPORT.
- F PATCH, SEAL, AND PAINT ALL OPENINGS CREATED FROM DEMOLITION WORK TO MATCH EXISTING CONSTRUCTION UNLESS NOTED OTHERWISE.
- G EXISTING PIPING AND LOCATIONS AND NOTIFY ENGINEER OF ANY DISCREPANCIES. VERIFY SIZES AND LOCATIONS AND NOTIFY ENGINEER OF ANY DISCREPANCIES.
- H COORDINATE FINAL ROUTING AND ELEVATIONS WITH EXISTING CONDITIONS AND THE ARCHITECTURAL AND STRUCTURAL DRAWINGS.
- I SEE DRAWING H-501 FOR CHILLED WATER PIPING & INSTRUMENTATION DIAGRAMS.

NO. DATE DESCRIPTION
0 10-10-2025 ISSUED FOR BID



**PAYCOR STADIUM
JUNGLE VISION UPGRADES - GENERAL CONSTRUCTION**
1 Paycor Stadium, Cincinnati, OH 45202



KZF DESIGN INC.
700 Broadway Street
Cincinnati, OH 45202

513.621.6211
kzf.com

DESIGNED COMM. NO.
CMOORMANN 13109.115

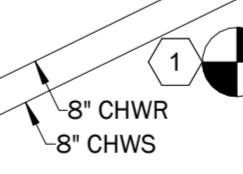
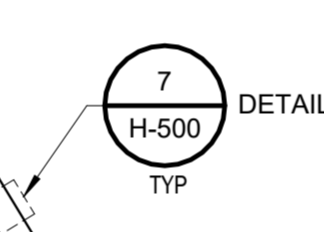
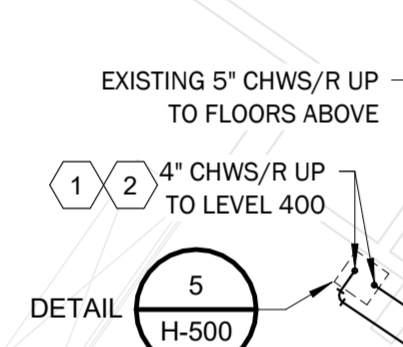
DRAWN DATE
RSCHROER 10/10/2025

CHECKED PROJ. MGR.
TCANNON MHUNTWORK

**HVAC
NEW WORK PLAN
LEVEL 100**

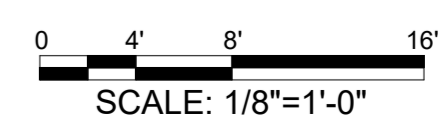
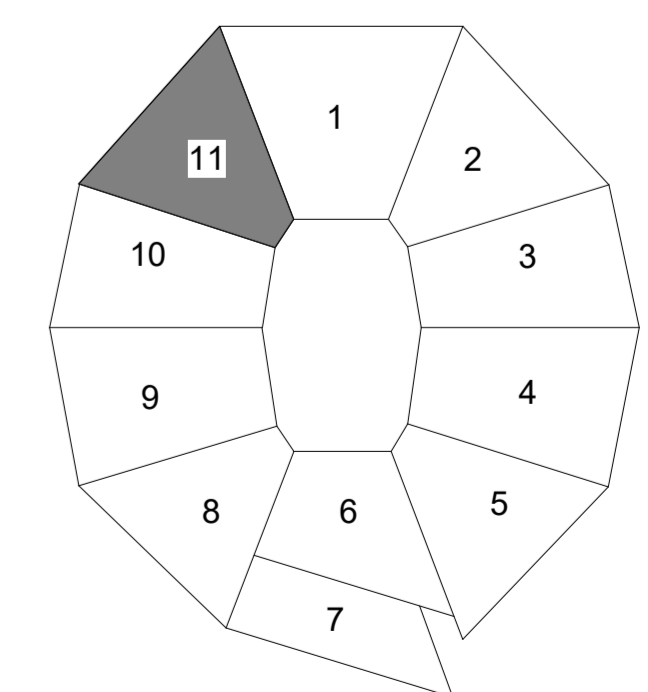
DRAWING NUMBER ISSUE
H-101 0

NOT FOR CONSTRUCTION



PARTIAL PLAN - NEW WORK - HVAC
SCALE: 1/8" = 1'-0"

1
H-101





PARTIAL PLAN - NEW WORK - HVAC
 SCALE: 1/8" = 1'-0"

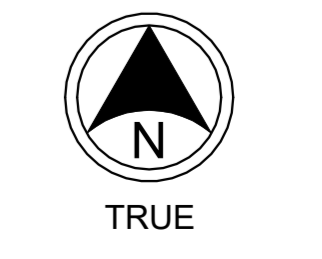
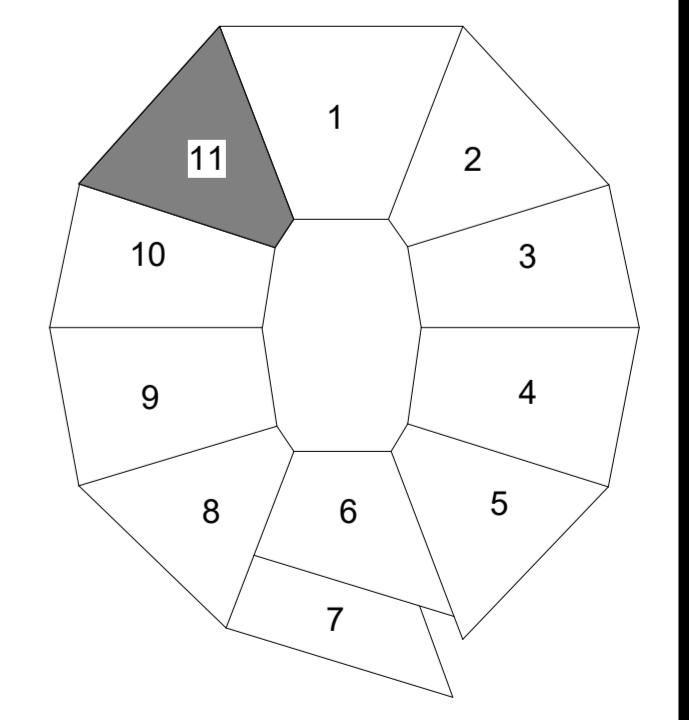
1
H-104

DRAWING NOTES

- DRAWING H-104
- 1 PROVIDE NEW CHILLED WATER SUPPLY AND RETURN PIPING, FITTINGS, INSULATION, AND SUPPORTS AS SHOWN. FIELD ROUTE PIPING TO COORDINATE WITH EXISTING TRADES IN CONCOURSE. SUPPORT FROM EXISTING CEILING AND WALL STRUCTURES.
 - 2 PROVIDE OFFSETS ON THE VERTICAL PIPING THRU LEVEL 200 AND LEVEL 300 AS NECESSARY TO AVOID EXISTING PIPING.
 - 3 PROVIDE NEW DUCTWORK, FITTINGS, INSULATION, AND JACKETING IN APPROXIMATE ROUTE INDICATED. SUPPORT NEW DUCTWORK FROM STRUCTURE ABOVE. COORDINATE ROUTING WITH EXISTING TRADES.
 - 4 PROVIDE OUTSIDE AIR INTAKE WITH 1/2' SQUARE STAINLESS STEEL METAL BIOSCREEN.

GENERAL NOTES

- APPLIES TO ALL DRAWINGS OF THIS TRADE
- A FOR KEY PLAN AND DRAWING INDEX SEE COVER SHEET AND DRAWING G-000
 - B FOR GENERAL NOTES, LEGEND AND SYMBOLS, SEE DRAWING H-001
 - C THIS BUILDING IS PROTECTED BY FLOOD PROTECTION SYSTEMS INCLUDING FLOOD WALLS AND A GENERATOR SUPPLIED DEEP WELL PLUMBING SYSTEM IN COMPLIANCE WITH ORC 1333.15(E)(2). THE WATER LEVEL IS MAINTAINED TO 470' WITHIN THE FACILITY. THE FLOODPLAIN ELEVATION IS 498'. THE LOWEST FLOOR ELEVATION IN THIS PROJECT SPACE IS 480'. THEREFORE, THERE ARE NO SPECIAL INSTALL REQUIREMENTS.
 - D ALL EQUIPMENT AND DEVICES ARE TO BE INSTALLED PER THE MANUFACTURER'S INSTRUCTIONS. COORDINATE FINAL LOCATIONS WITH THE GC AND THE ARCHITECTURAL AND STRUCTURAL DRAWINGS. MAINTAIN ALL MANUFACTURER REQUIRED CLEARANCES. PROVIDE ALL STARTUP SERVICES AND ENSURE EACH HVAC EQUIPMENT AND SYSTEM IS FULLY FUNCTIONAL.
 - E PROVIDE COMPLETE AIR AND WATER BALANCE AND ADJUSTMENT OF ALL HVAC EQUIPMENT AND ASSOCIATED DUCT AND PIPE DISTRIBUTION SYSTEMS WITH CERTIFIED AABC REPORT.
 - F PATCH, SEAL, AND PAINT ALL OPENINGS CREATED FROM DEMOLITION WORK TO MATCH EXISTING CONSTRUCTION UNLESS NOTED OTHERWISE.
 - G EXISTING PIPING AND DUCTWORK SIZES AND ROUTES ARE APPROXIMATE. FIELD VERIFY SIZES AND LOCATIONS AND NOTIFY ENGINEER OF ANY DISCREPANCIES.
 - H COORDINATE FINAL ROUTING AND ELEVATIONS WITH EXISTING CONDITIONS AND THE ARCHITECTURAL AND STRUCTURAL DRAWINGS.
 - I SEE DRAWING H-501 FOR CHILLED WATER PIPING & INSTRUMENTATION DIAGRAMS.



0 4' 8' 16'
 SCALE: 1/8" = 1'-0"

**PAYCOR STADIUM
 JUNGLE VISION UPGRADES - GENERAL CONSTRUCTION**
 1 Paycor Stadium, Cincinnati, OH 45202



KZF DESIGN INC.
 700 Broadway Street
 Cincinnati, OH 45202

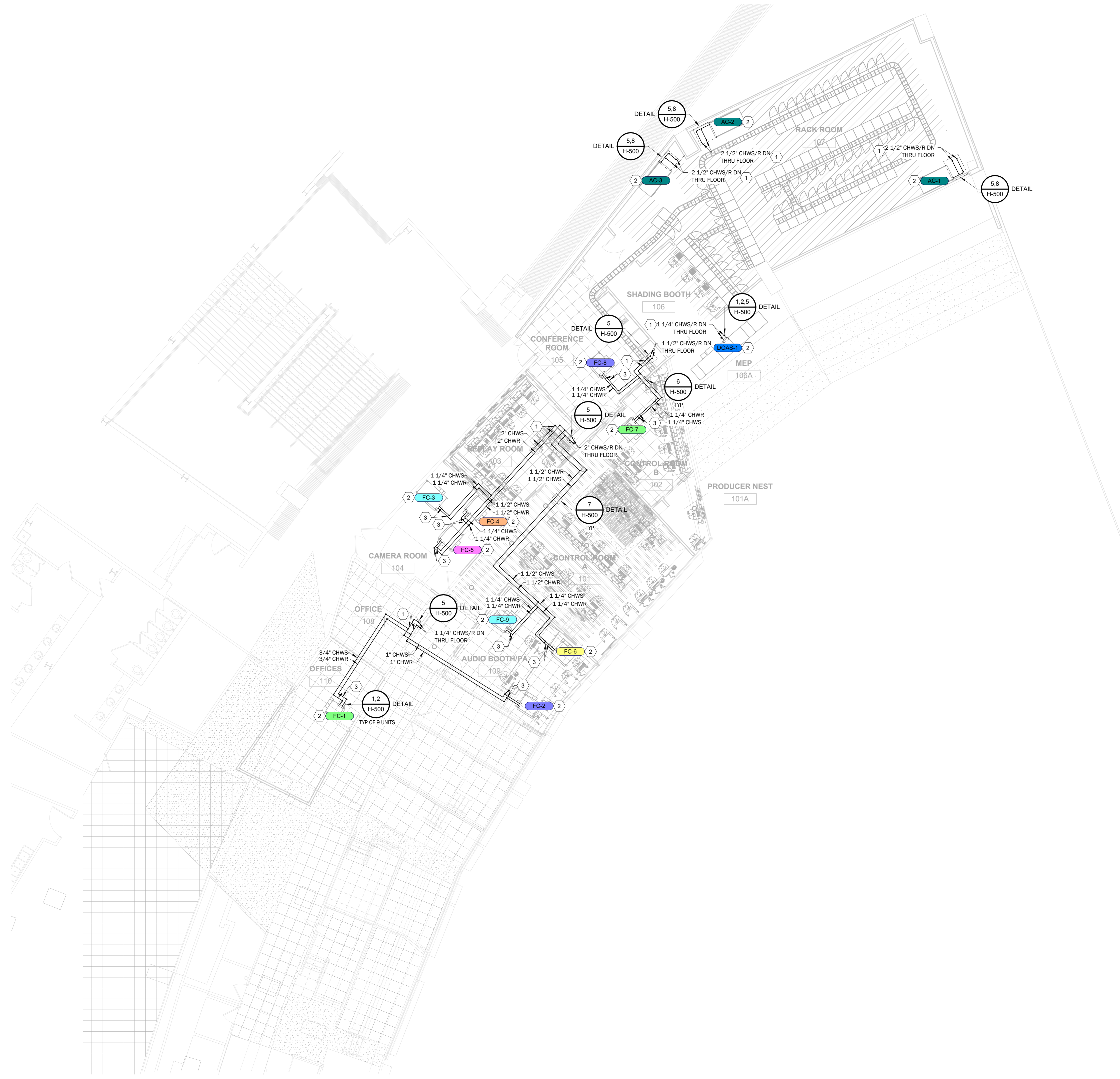
513.621.6211
 kzf.com

DESIGNED	COMM. NO.
CMOORMANN	13109.115
DRAWN	DATE
RSCHROER	10/10/2025
CHECKED	PROJ. MGR.
TCANNON	MHUNTWORK

**HVAC
 NEW WORK PLAN
 LEVEL 400**

DRAWING NUMBER ISSUE
H-104 0

NOT FOR CONSTRUCTION



DRAWING NOTES

- DRAWING H-115
- 1 PROVIDE NEW CHILLED WATER SUPPLY AND RETURN PIPING, FITTINGS, INSULATION, AND SUPPORTS AS SHOWN. FIELD ROUTE TO COORDINATE WITH EXISTING FIRE PROTECTION AND PLUMBING PIPING, DUCTWORK, AND ELECTRICAL CONDUIT ABOVE CEILINGS. SUPPORT FROM WALL STRUCTURES OR THE STRUCTURE ABOVE.
 - 2 PROVIDE ALL COIL TRIM PIPING FOR CHILLED WATER AND CONDENSATE TRAPS FOR NEW EQUIPMENT.
 - 3 MAINTAIN PIPING HIGH TO PROVIDE CLEARANCE ON SIDE OF UNIT FOR FILTER ACCESS AND ELECTRICAL BOX NEC REQUIRED CLEARANCE.

EQUIPMENT NOTES

- SEE EQUIPMENT SCHEDULES ON H700 SERIES DRAWINGS FOR ADDITIONAL DETAILS.
- AC-X NEW CRAC UNITS - CHILLED WATER COOLING, ELECTRIC HEATING, DOMESTIC WATER HUMIDIFICATION
- DCAS-X NEW DEDICATED OUTDOOR AIR UNIT - CHILLED WATER COOLING, ELECTRIC PREHEAT AND REHEAT
- FC-X NEW FAN COIL UNITS - CHILLED WATER COOLING, ELECTRIC HEATING

GENERAL NOTES

- APPLIES TO ALL DRAWINGS OF THIS TRADE
- A FOR KEY PLAN AND DRAWING INDEX SEE COVER SHEET AND DRAWING G-000
 - B FOR GENERAL NOTES, LEGEND AND SYMBOLS, SEE DRAWING H-001
 - C THIS BUILDING IS PROTECTED BY FLOOD PROTECTION SYSTEMS INCLUDING FLOOD WALLS AND A GENERATOR SUPPLIED DEEP WELL PLUMBING SYSTEM IN COMPLIANCE WITH ORC 1333.15(E)(2). THE WATER LEVEL IS MAINTAINED TO 47' WITHIN THE FACILITY. THE FLOODPLAIN ELEVATION IS 498'. THE LOWEST FLOOR ELEVATION IN THIS PROJECT SPACE IS 487'. THEREFORE, THERE ARE NO SPECIAL INSTALL REQUIREMENTS.
 - D ALL EQUIPMENT AND DEVICES ARE TO BE INSTALLED PER THE MANUFACTURER'S INSTRUCTIONS. COORDINATE FINAL LOCATIONS WITH THE GC AND THE ARCHITECTURAL AND STRUCTURAL DRAWINGS. MAINTAIN ALL MANUFACTURER REQUIRED CLEARANCES. PROVIDE ALL STARTUP SERVICES AND ENSURE EACH HVAC EQUIPMENT AND SYSTEM IS FULLY FUNCTIONAL.
 - E PROVIDE COMPLETE AIR AND WATER BALANCE AND ADJUSTMENT OF ALL HVAC EQUIPMENT AND ASSOCIATED DUCT AND PIPE DISTRIBUTION SYSTEMS WITH CERTIFIED AABC REPORT.
 - F PATCH, SEAL, AND PAINT ALL OPENINGS CREATED FROM DEMOLITION WORK TO MATCH EXISTING CONSTRUCTION UNLESS NOTED OTHERWISE.
 - G EXISTING PIPING AND DUCTWORK SIZES AND ROUTES ARE APPROXIMATE. FIELD VERIFY SIZES AND LOCATIONS AND NOTIFY ENGINEER OF ANY DISCREPANCIES.
 - H COORDINATE FINAL ROUTING AND ELEVATIONS WITH EXISTING CONDITIONS AND THE ARCHITECTURAL AND STRUCTURAL DRAWINGS.
 - I SEE DRAWING H-501 FOR CHILLED WATER PIPING & INSTRUMENTATION DIAGRAMS.

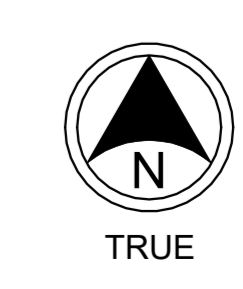
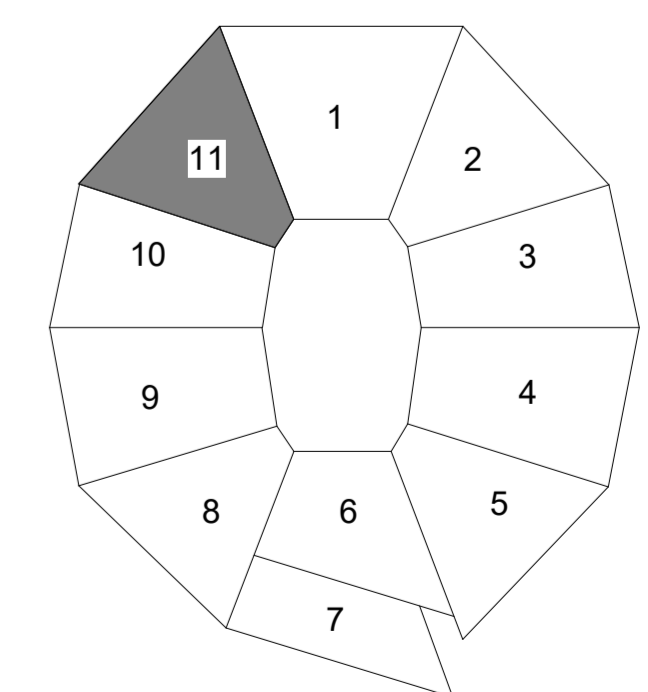
NO.	DATE	DESCRIPTION
0	10-10-2025	ISSUED FOR BID



**PAYCOR STADIUM
JUNGLE VISION UPGRADES - GENERAL CONSTRUCTION**
1 Paycor Stadium, Cincinnati, OH 45202



KZF DESIGN INC.
700 Broadway Street
Cincinnati, OH 45202
513.621.6211
kzf.com



0 4' 8' 16'
SCALE: 1/8"=1'-0"

PARTIAL PLAN - NEW WORK - HVAC - PIPING
SCALE: 1/8" = 1'-0"

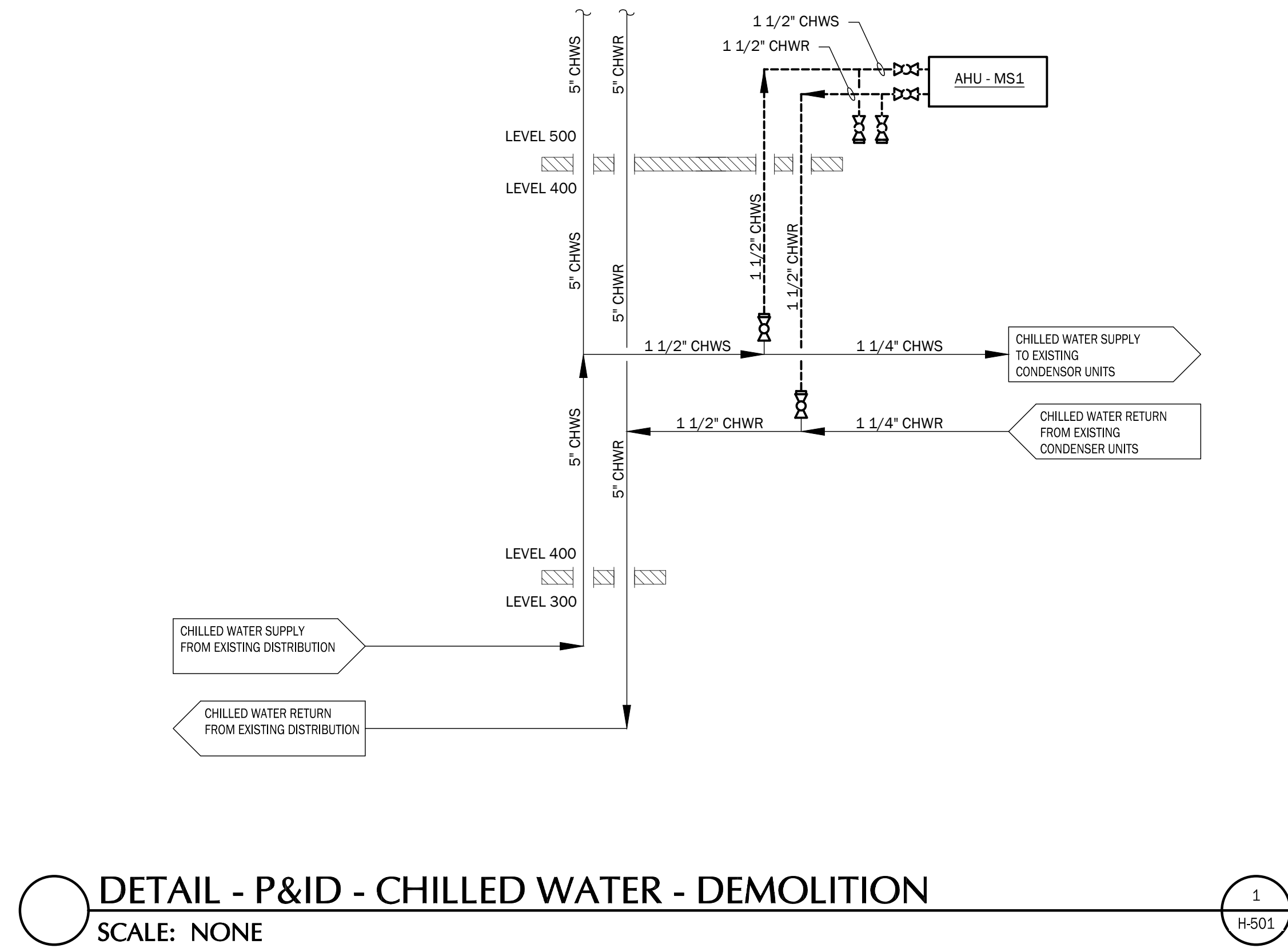
1
H-115

DESIGNED	COMM. NO.
CMOORMANN	13109.115
DRAWN	DATE
RSCHROER	10/10/2025
CHECKED	PROJ. MGR.
TCANNON	MHUNTWORK

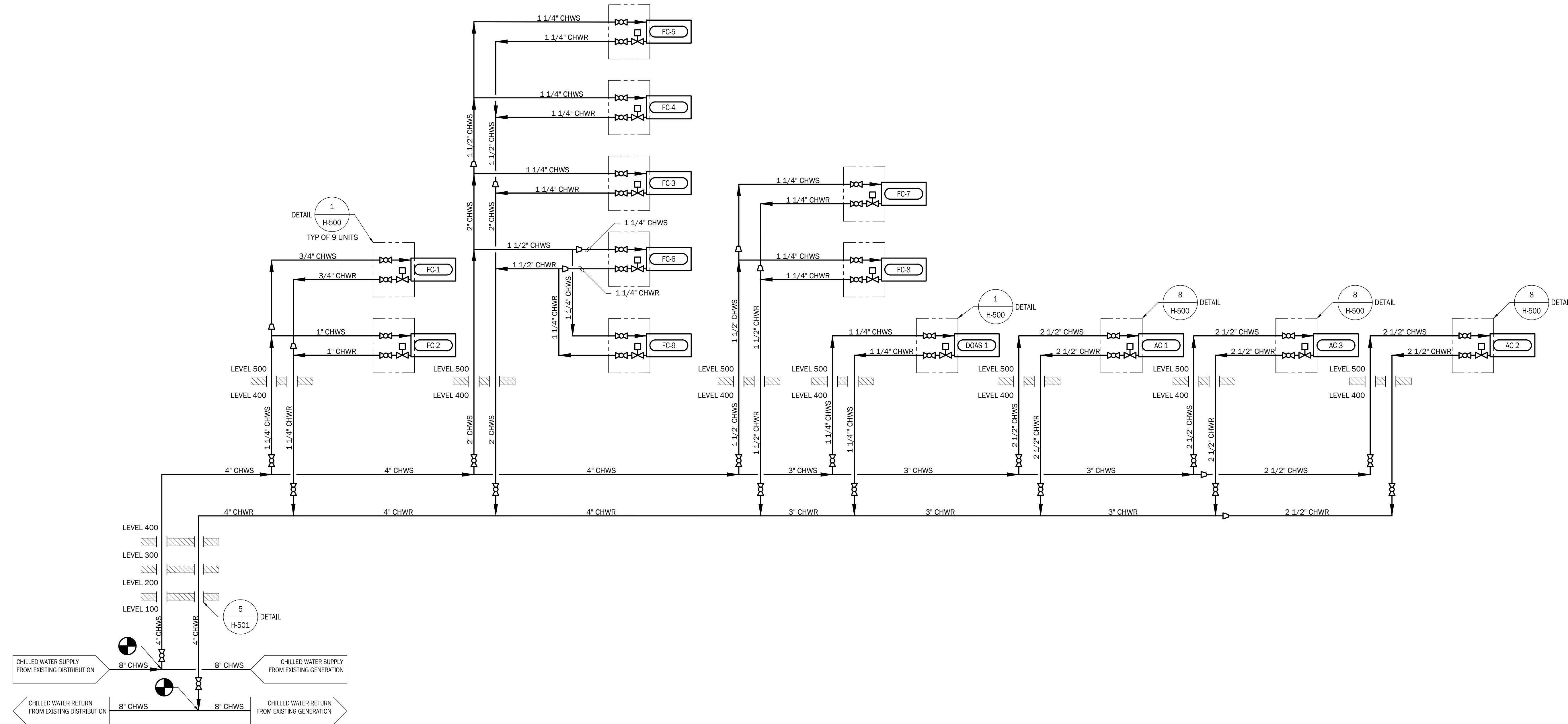
**HVAC
NEW WORK PLAN
LEVEL 500
PIPING**

DRAWING NUMBER	ISSUE
H-115	0

NOT FOR CONSTRUCTION

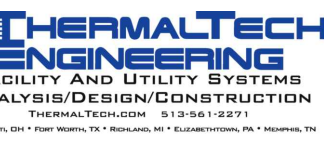


DETAIL - P&ID - CHILLED WATER - DEMOLITION
SCALE: NONE



DETAIL - P&ID - CHILLED WATER - NEW WORK
SCALE: NONE

NO. DATE DESCRIPTION
0 10-10-2025 ISSUED FOR BID



**PAYCOR STADIUM
JUNGLE VISION UPGRADES - GENERAL CONSTRUCTION**
1 Paycor Stadium, Cincinnati, OH 45202



KZF DESIGN INC.
700 Broadway Street
Cincinnati, OH 45202

513.621.6211
kzf.com

DESIGNED	COMM. NO.
CMOORMANN	13109.115
DRAWN	DATE
RSCHROER	10/10/2025
CHECKED	PROJ. MGR.
TCANNON	MHUNTWORK

**HVAC
DETAILS**

DRAWING NUMBER ISSUE
H-501 0