

Report By:

National TAB
1329 E. KEMPER ROAD
SUITE 4210
CINCINNATI, OH 45246



Report: TAB REPORT
Function: Test, Adjust, & Balance
Date: 01/30/2026
Completed By: National TAB

PROJECT
01-26-26 WAWA #7219 LIMA, OH

1319 BREESE RD W

LIMA, OH 45806

Client

Wawa
260 West Baltimore Pike

Wawa, PA 19063

National TAB

Project: 01-26-26 WAWA #7219 LIMA, OH

Table Of Contents

| Section | Page # |
|------------------|---------------|
| SUMMARY | 3 |
| REMARKS | 4 |
| BALANCE SCHEDULE | 15 |
| CHECKLISTS | 16 |
| AHU/RTU | 27 |
| FAN - Exhaust | 35 |
| GRD LAYOUT | 40 |



Project Summary

Project Summary

The summary below provides a quick understanding of our scope of work and general testing procedures. Enclosed in the report is further detail about your building performance including recommendations, asset data, and pictures. Our focus is to work with the trades to remedy any issues or deficiencies during the actual field balancing and not after the balancing has occurred to achieve a positive environment and outcome. The level of success is determined by the availability of the trades, possible parts needed, or time constraints.

RTU's (Roof Top Units) w/ Diffusers

Each of the RTU's were measured at their terminal devices or via traverse to establish a total flow for that unit. Each RTU was adjusted to within tolerance of the engineer's design flow. Each outlet was then adjusted to within tolerance of the design flow. Outside air was measured by reading the intake air opening with a velocity grid and multiplying by the free area. The outside air damper was adjusted until the airflow was within the design requirements. Any equipment that fell outside of that tolerance is noted throughout the report.

General Exhaust Fans w/ Grilles

The general exhaust fans were measured by reading each air device with a flow hood. The total airflow for each fan is equivalent to the sum of these readings. Fan speed was then adjusted so that the airflow was within tolerance of design. Each terminal device was balanced to within tolerance of the design volume using the installed volume dampers. Any equipment that fell outside of this tolerance is noted throughout the report.

Ceiling Exhaust Fans

The ceiling exhaust fans were measured using a flow hood. If speed adjustment was provided, the fan speed was adjusted to within design tolerance. Any equipment that fell outside of this tolerance is noted throughout the report.

Final Building Tests

After completing the test and balance the final building pressure was measured. It was confirmed that the building pressure fell within acceptable tolerances and that the pressure measurement coincides with the actual and design net airflow. Any deviations from these standards are noted throughout the report

Issue List

- EF-1 DIFFUSERS LOW FLOW
- EF-2 LOW FLOW
- EF-2 MISSING GRILLES
- EF-2 OVER AMPERAGE
- EF-3 LOW FLOW
- EF-3 POWER
- RTU-1 RETURN DUCTWORK
- RTU-2 ALARM
- RTU-3 MISSING DIFFUSER
- RTU-4 MISSING DAMPER



01-26-26 WAWA #7219 LIMA, OH

Project Issue Information

Issue Name : EF-1 DIFFUSERS LOW FLOW
Description : EF-1 diffusers read a total of 937cfm out of 1500cfm required by design. Motor sheave is fully tightened; motor is operating at maximum amperage. No duct leakage detected. Exhaust fan ductwork pictured. Issue is also present at the Richmond, IN store of the same model.
Created By : National TAB **Assigned To :** National TAB - Noah Stafford
Status : Open
Priority : High **Asset Tag :**
Originated Date : 01/28/2026 - Noah Stafford - National TAB

Project Issue File Details



01/29/2026



01/29/2026



01-26-26 WAWA #7219 LIMA, OH

Project Issue Information

Issue Name : EF-2 LOW FLOW
Description : EF-2 is exhausting 120cfm out of 400cfm required by design. Low exhaust grille readings likely due to detached ductwork pictured.
Created By : National TAB **Assigned To :** National TAB - Noah Stafford
Status : Closed
Priority : High **Asset Tag :**
Originated Date : 01/29/2026 - Noah Stafford - National TAB

Project Issue File Details



01/29/2026



01/29/2026

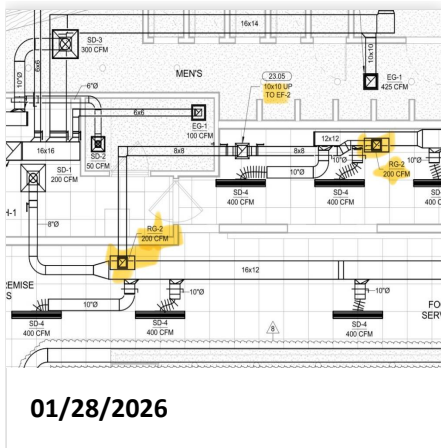


01-26-26 WAWA #7219 LIMA, OH

Project Issue Information

Issue Name : EF-2 MISSING GRILLES
Description : EF-2 is missing both grilles. TAB cannot be completed until resolved.
Created By : National TAB **Assigned To :** National TAB - Noah Stafford
Status : Closed
Priority : **Urgent** **Asset Tag :**
Originated Date : 01/27/2026 - Noah Stafford - National TAB

Project Issue File Details





01-26-26 WAWA #7219 LIMA, OH

Project Issue Information

Issue Name : EF-2 OVER AMPERAGE

Description : EF-2 is running at 1.7 out of 1.38 rated motor amps. Cannot reduce speed without a speed control.

Created By : National TAB

Assigned To : National TAB - Noah Stafford

Status : Open

Priority : Urgent

Asset Tag :

Originated Date : 01/29/2026 - Noah Stafford - National TAB



01-26-26 WAWA #7219 LIMA, OH

Project Issue Information

Issue Name : EF-3 LOW FLOW
Description : EF-3 can only exhaust 57cfm out of 200cfm required by design, even at full speed. Issue is also present at the Richmond, IN store of the same model.
Created By : National TAB **Assigned To :** National TAB - Noah Stafford
Status : Open
Priority : High **Asset Tag :**
Originated Date : 01/29/2026 - Noah Stafford - National TAB



01-26-26 WAWA #7219 LIMA, OH

Project Issue Information

Issue Name : EF-3 POWER
Description : EF-3 is not wired. TAB cannot be completed until resolved.
Created By : National TAB **Assigned To :** National TAB - Noah Stafford
Status : Closed
Priority : Urgent **Asset Tag :**
Originated Date : 01/27/2026 - Noah Stafford - National TAB

Project Issue File Details



01/27/2026



01-26-26 WAWA #7219 LIMA, OH

Project Issue Information

Issue Name : RTU-1 RETURN DUCTWORK
Description : Return grill 1-3 disconnected. Return grill 1-2 not ducted. TAB cannot be completed until resolved.
Created By : National TAB **Assigned To :** National TAB - Noah Stafford
Status : Closed
Priority : Urgent **Asset Tag :**
Originated Date : 01/27/2026 - Noah Stafford - National TAB

Project Issue File Details



01/27/2026

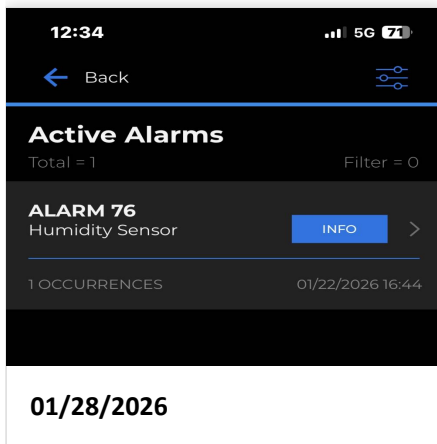


01-26-26 WAWA #7219 LIMA, OH

Project Issue Information

Issue Name : RTU-2 ALARM
Description : RTU-2 has error code 76: humidity sensor. Issue does not prevent TAB.
Created By : National TAB **Assigned To :** National TAB - Noah Stafford
Status : Open
Priority : InfoOnly **Asset Tag :**
Originated Date : 01/28/2026 - Noah Stafford - National TAB

Project Issue File Details





01-26-26 WAWA #7219 LIMA, OH

Project Issue Information

Issue Name : RTU-3 MISSING DIFFUSER
Description : RTU-3 is missing diffuser 3-1 at the main entrance vestibule. TAB cannot be completed until installed.
Created By : National TAB **Assigned To :** National TAB - Noah Stafford
Status : Closed
Priority : Urgent **Asset Tag :**
Originated Date : 01/28/2026 - Noah Stafford - National TAB

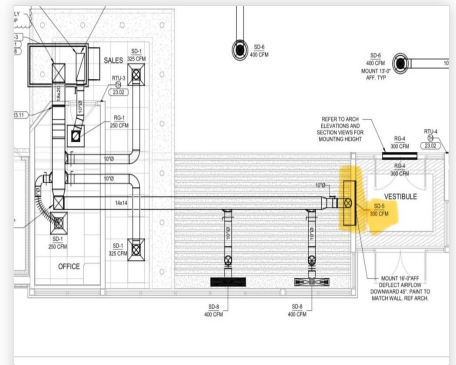
Project Issue File Details



01/28/2026



01/28/2026



01/28/2026

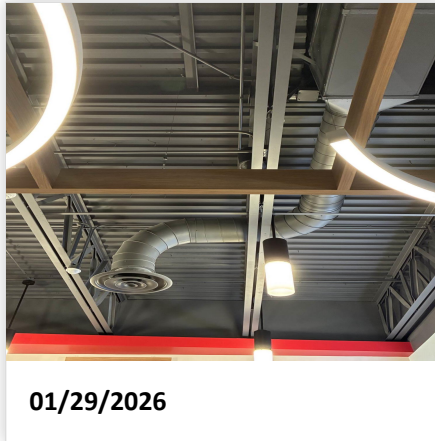
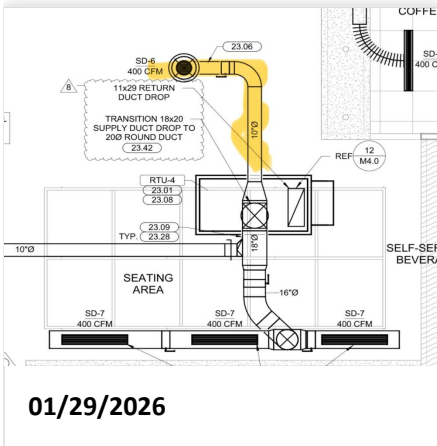


01-26-26 WAWA #7219 LIMA, OH

Project Issue Information

Issue Name : RTU-4 MISSING DAMPER
Description : RTU-4 missing damper on pictured round diffuser. TAB cannot be completed until resolved.
Created By : National TAB **Assigned To :** National TAB - Noah Stafford
Status : Closed
Priority : High **Asset Tag :**
Originated Date : 01/29/2026 - Noah Stafford - National TAB

Project Issue File Details



AIR BALANCE SCHEDULE

| UNIT | AREA SERVED | HVAC SUPPLY | | HVAC RETURN | | HVAC OUTDOOR | | OA % | | HOOD MAKE-UP | | HOOD EXHAUST | | GENERAL EXH. | |
|---------------|-------------|-------------|--------|-------------|--------|--------------|--------|--------|--------|--------------|--------|--------------|--------|--------------|--------|
| | | DESIGN | ACTUAL | DESIGN | ACTUAL | DESIGN | ACTUAL | DESIGN | ACTUAL | DESIGN | ACTUAL | DESIGN | ACTUAL | DESIGN | ACTUAL |
| RTU-1 | BOH | 5000 | 4789 | 4060 | 3761 | 940 | 1028 | 18.8% | 21.5% | | | | | | |
| RTU-2 | SALES | 4000 | 3803 | 3300 | 3119 | 700 | 684 | 17.5% | 18.0% | | | | | | |
| RTU-3 | FOH | 2000 | 1928 | 1600 | 1559 | 400 | 369 | 20.0% | 19.1% | | | | | | |
| RTU-4 | SEATING | 2000 | 2010 | 1600 | 1612 | 400 | 398 | 20.0% | 19.8% | | | | | | |
| EF-1 | RESTROOMS | | | | | | | | | | | | | 1500 | 937 |
| EF-2 | BOH | | | | | | | | | | | | | 400 | 442 |
| EF-3 | TRASH RM | | | | | | | | | | | | | 200 | 57 |
| TOTALS | | 13000 | 12530 | 10560 | 10051 | 2440 | 2479 | | | 0 | 0 | 0 | 0 | 2100 | 1436 |

NET BUILDING AIRFLOW CALCULATION

| TOTALS | DESIGN | ACTUAL |
|--------------------|------------|-------------|
| TOTAL OA | 2440 | 2479 |
| TOTAL EXHAUST | 2100 | 1436 |
| NET AIRFLOW | 340 | 1043 |

| DOOR TESTED | BUILDING PRESSURE MEASUREMENTS (IN. H2O) |
|----------------|--|
| FRONT | 0.0037 |
| SIDE | |
| REAR | 0.0106 |
| AVERAGE | 0.0072 |

FINAL CHECKS

- ACTUAL NET AIRFLOW COINCIDES WITH DESIGN: ✓

- MEASURED PRESSURES COINCIDES WITH ACTUAL NET AIRFLOW: ✓

- PRESSURE FALLS WITHIN IMC TOLERANCE OF +/-0.02" W.C. ✓

NOTES:

CheckList List

- 01: RTU's/AHU's
- 02: LENNOX SETUP PARAMETERS
- 03: SENSOR WIRING (LENNOX)
- 04: EF'S
- 05: CLOSEOUT CHECKS



01-26-26 WAWA #7219 LIMA, OH

CheckList Information

Name : 01: RTU's/AHU's **Status :** Completed

Assigned Organization : National TAB **Asset :**

Requesting Organization : National TAB

Created Date : 12/17/2025 - Trinity Dodds - National TAB

Completed Date : 01/30/2026 - Noah Stafford - National TAB

CheckList Item Details

RTU's/AHU's

| | |
|---|------|
| All diffusers and grilles are installed and match design? | Pass |
|---|------|

Comment:

| | |
|--------------------------|------|
| Clean filters installed? | Pass |
|--------------------------|------|

Comment:

| | |
|---|------|
| Economizers are assembled and functional? | Pass |
|---|------|

Comment:

| | |
|--|------|
| Motors are all operating below the FLA rating? | Pass |
|--|------|

Comment:

| | |
|------------------|-----|
| Are belts tight? | N/A |
|------------------|-----|

Comment:

| | |
|---|------|
| If direct drive unit is the speed controller working? | Pass |
|---|------|

Comment:

| | |
|---|------|
| Is gas piping installed and valves turned on? | Pass |
|---|------|

Comment:

Condensate drains are installed?

Pass

Comment:

Unit free of noticeable noise and vibration

Pass

Comment:

Final outside air damper position is marked with permanent marker?

Pass

Comment:

No alarms present?

Pass

Comment:

RTU-2: ALARM 76- HUMIDITY SENSOR

Any noticeable duct leakage?

Pass

Comment:

Total supply and OA flows are balanced within +/-5% and supply & return diffusers within +/-10%?

Pass

Comment:

Adjust side wall diffusers on spiral duct that blow towards the coffee island drop-in to prevent issues with it staying at temperature. Fan out of the deflector blades or reduce airflow as necessary to prevent drafting.

Pass

Comment:

IN TEST MODE, TEST THE FOLLOWING:

Cooling mode is operational? Record EAT/LAT for each unit:

N/A

Comment:

Temperature too cold to test effectively.

Heating mode is operational? Record EAT/LAT for each unit:

Pass

Comment:

RTU1: EAT 61F, LAT 76F RTU2: EAT 66F, LAT 138F RTU3: EAT 69F, LAT 120F RTU4: EAT 66F, LAT 83F

Dehumidification mode is operational? (Feel dehumidification coil with your hand. Is it hot?) Record EAT/LAT for each unit:

N/A

Comment:

Temperature too cold to test effectively.



01-26-26 WAWA #7219 LIMA, OH

CheckList Information

Name : 02: LENNOX SETUP PARAMETERS **Status :** Completed

Assigned Organization : National TAB **Asset :**

Requesting Organization : National TAB

Created Date : 12/17/2025 - Trinity Dodds - National TAB

Completed Date : 01/30/2026 - Noah Stafford - National TAB

CheckList Item Details

UNIT ID CONFIGURATIONS

BACNET CONFIGURATION: GO TO SETTINGS>GENERAL>CONFIGURATION ID1 POSITION 5 SET TO "N". Pass

Comment:

NETWORK CONFIGURATION: GO TO SETUP>NETWORK INTEGRATION, SET TO BACNET IP Pass

Comment:

CONTROL MODE: SET CONTROL MODE TO ROOM SENSOR: CO2, TEMP & HUMIDITY (PER UNIT, AS NEEDED). Pass

Comment:

INDIVIDUAL PARAMETER CONFIGURATIONS (MECHANICAL CONTRACTOR TO DEFINE / AS APPLICABLE):

PARAMETER 105 DEHUMID MODE: 7 NO CONDITIONS Pass

Comment:

PARAMETER 106 DEHUMID SETPOINT: 50, THIS IS A CENTERED SET POINT (+/-) Yes

Comment:

PARAMETER 107 DEHUMID DEADBAND: 3 (DEFAULT) THIS IS THE ACTUAL +/- VALUE Pass

Comment:

PARAMETER 117 CO2 DAMPER MAX OPEN: 50%

Pass

Comment:

PARAMETER 118 CO2 START OPEN PPM: 1500

Pass

Comment:

PARAMETER 119 CO2 MAX OPEN PPM: 1500

Pass

Comment:

PARAMETER 137 OCCHET SET POINT: 68 (BACK UP)

Pass

Comment:

PARAMETER 131 SET TO THE SAME % AS THE MINMIUM OA DAMPER SETPOINT

Pass

Comment:

PARAMETER 139 OCC COOLING SET POINT: 72 (BACK UP)

Pass

Comment:

PARAMETER 154 OCC BLOWER MODE: ON-CONTINUOUS 1

Pass

Comment:

CFM VALUES / MSAV FAN SPEEDS (AIR BALANCER TO DEFINE / IF APPLICABLE):

OA DAMPER SET TO SAME POSITION IN ALL FAN SPEEDS?

Pass

Comment:

ALL FAN SPEEDS SET TO THE SAME CFM VALUE (ENTER SETPOINTS BELOW)

Pass

Comment:

RTU1: 97% RTU2: 79% RTU3: 85% RTU4: 86%

HEAT CFM VALUE: PER THE HVAC SCHEDULE

Pass

Comment:

HIGH COOL CFM VALUE: THE HIGH COOL CFM VALUE

Pass

Comment:

LOW COOL CFM VALUE: MATCH THE HIGH COOL CFM VALUE

Pass

Comment:

VENTILATION CFM VALUE: MATCH THE HIGH COOL CFM VALUE

Pass

Comment:



01-26-26 WAWA #7219 LIMA, OH

CheckList Information

Name : 03: SENSOR WIRING (LENNOX) **Status :** Completed

Assigned Organization : National TAB **Asset :**

Requesting Organization : National TAB

Created Date : 12/17/2025 - Trinity Dodds - National TAB

Completed Date : 01/30/2026 - Noah Stafford - National TAB

CheckList Item Details

COMBINATION TEMPERATURE/HUMIDITY SENSOR

Sensors are installed where shown on the drawing? Pass

Comment:

2 conductor shielded cable has one wire landed to Vin, one to GND, and the shield wire is not connected. Pass

Comment:

For second shielded cable, one wire is landed to Vout and the shield wire is not connected. Pass

Comment:

Verify that the CORE or Prodigy controller is sensing a relative humidity (record the reading) Pass

Comment:

RTU1: 8% RTU2: N/A RTU3: 9% RTU4: 11%



01-26-26 WAWA #7219 LIMA, OH

CheckList Information

Name : 04: EF'S **Status :** Completed

Assigned Organization : National TAB **Asset :**

Requesting Organization : National TAB

Created Date : 12/17/2025 - Trinity Dodds - National TAB

Completed Date : 01/30/2026 - Noah Stafford - National TAB

CheckList Item Details

EF's

| | |
|-----------------------------|------|
| Rotation is correct? | Pass |
|-----------------------------|------|

Comment:

| | |
|---|------|
| Belts are tight (if applicable)? | Pass |
|---|------|

Comment:

| | |
|---|------|
| Speed controller installed and functional (if applicable)? | Fail |
|---|------|

Comment:

EF-2: NO SPEED CONTROL

| | |
|--|------|
| There is no major leakage around base of fan? | Pass |
|--|------|

Comment:

| | |
|---|------|
| Is the motor operating below the motor FLA rating? | Fail |
|---|------|

Comment:

EF-2 OVER AMPERAGE

| | |
|---|------|
| Back draft damper installed and can it fully open? | Pass |
|---|------|

Comment:

Unit free of noticeable noise and vibration?

Pass

Comment:

Total exhaust flow balanced within +/-5% and grilles are within +/-10%?

Fail

Comment:

EF-1 GRILLES LOW EF-2 HIGH TOTAL FLOW EF-3 LOW FLOW



01-26-26 WAWA #7219 LIMA, OH

CheckList Information

Name : 05: CLOSEOUT CHECKS **Status :** Completed

Assigned Organization : National TAB **Asset :**

Requesting Organization : National TAB

Created Date : 12/17/2025 - Trinity Dodds - National TAB

Completed Date : 02/25/2026 - Noah Stafford - National TAB

CheckList Item Details

SPACE COMFORT

Is space free of drafting? Pass

Comment:

Is space comfortable in all areas? Pass

Comment:

Is the space free of ventilation noise? Pass

Comment:

BUILDING PRESSURE

Do actual net building airflow, design net building airflow, and pressure coincide? If not why? (All three should either be positive or negative) Pass

Comment:

National TAB

Project: 01-26-26 WAWA #7219 LIMA, OH

System/Unit: AHU/RTU



Asset: RTU-1

AREA:BOH

| Unit Data | | |
|---------------------|-----------|------------|
| | Design | Actual |
| MFG | LENNOX | LENNOX |
| Serial Num | - | 5624L04773 |
| Model Num | LGT150H5E | LGT150H5E |
| Type | RTU | RTU |
| Configuration | VERTICAL | VERTICAL |
| Num OA Filters 1 | - | 2 |
| OA Filter Size 1 | - | 15X24" |
| Num Final Filter 1 | - | 4 |
| Final Filter Size 1 | - | 20X25X2" |

| Test Data | | |
|--------------------|--------|--------------|
| | Design | Actual |
| SF CFM | 5000 | 4789 |
| RA CFM | 4060 | 3761 |
| OA CFM | 940 | 1028 |
| RL Voltage | - | 214/213/215V |
| RL Amperage | - | 7.6/7.5/7.4A |
| SF System SetPt | - | 97% |
| OA Damper Position | - | 18% |
| OA Damper Type | - | ECONOMIZER |

| Motor Data | | |
|----------------|--------|--------|
| | Design | Actual |
| Horsepower | 3.75 | 3.8 |
| Phase | 3 | 3 |
| Rated Voltage | 208 | 208 |
| Rated Amperage | - | 8.7 |

| Performance Data | | |
|------------------|--------|--------|
| | Design | Actual |
| MA Plenum SP | - | -0.83" |
| Fan Suction SP | - | -1.41" |
| Fan Discharge SP | - | 0.97" |
| Total ESP | 0.50" | 1.80" |
| Fan Total SP | - | 2.38" |

Completed By: Noah Stafford on 01/29/2026

National TAB

Project:01-26-26 WAWA #7219 LIMA, OH

AHU/RTU



Diffuser Supply (GRD)

RTU-1/BOH

| Asset | | | | | | | | | |
|------------|--------------|------|------|------------|----|--------|--------|-----------|-------------|
| Asset Name | Location | Type | Size | DESIGN CFM | AK | CFM(1) | CFM(2) | FINAL CFM | % to design |
| SGRD1 | COFFEE | SD-4 | 10" | 400 | 1 | 419 | 422 | 378 | 94.5 |
| SGRD2 | COFFEE | SD-4 | 10" | 400 | 1 | 255 | 297 | 374 | 93.5 |
| SGRD3 | FOOD SERVICE | SD-4 | 10" | 400 | 1 | 0 | 454 | 351 | 87.8 |
| SGRD4 | FOOD SERVICE | SD-4 | 10" | 400 | 1 | 238 | 212 | 409 | 102.3 |
| SGRD5 | FOOD SERVICE | SD-4 | 10" | 400 | 1 | 241 | 207 | 379 | 94.8 |
| SGRD6 | FOOD SERVICE | SD-4 | 10" | 400 | 1 | 312 | 272 | 358 | 89.5 |
| SGRD7 | BOH-1 | SD-1 | 8" | 200 | 1 | 330 | 308 | 182 | 91.0 |
| SGRD8 | BOH-1 | SD-4 | 10" | 400 | 1 | 364 | 397 | 416 | 104.0 |
| SGRD9 | BOH-1 | SD-4 | 10" | 400 | 1 | 326 | 301 | 395 | 98.8 |
| SGRD10 | BOH-1 | SD-4 | 10" | 400 | 1 | 171 | 206 | 369 | 92.3 |
| SGRD11 | BOH-1 | SD-4 | 10" | 400 | 1 | 249 | 333 | 354 | 88.5 |
| SGRD12 | WATER ROOM | SD-2 | 6" | 25 | 1 | 0 | 26 | 26 | 104.0 |
| SGRD13 | BOH-3 | SD-1 | 8" | 150 | 1 | 316 | 323 | 136 | 90.7 |
| SGRD14 | BOH-3 | SD-1 | 8" | 150 | 1 | 0 | 363 | 150 | 100.0 |
| SGRD15 | TRASH | SD-1 | 8" | 200 | 1 | 210 | 205 | 215 | 107.5 |
| SGRD16 | ELECTRICAL | SD-1 | 8" | 150 | 1 | 429 | 436 | 164 | 109.3 |
| SGRD17 | ELECTRICAL | SD-1 | 8" | 125 | 1 | 320 | 334 | 133 | 106.4 |
| Total | | | | 5000 | | 4180 | 5096 | 4789 | 95.78% |

Diffuser Ret/Exh (GRD)

RTU-1/BOH

| Asset | | | | | | | | | |
|------------|--------------|------|-------|------------|----|--------|--------|-----------|-------------|
| Asset Name | Location | Type | Size | DESIGN CFM | AK | CFM(1) | CFM(2) | FINAL CFM | % to design |
| EGRD2 | FOOD SERVICE | RG-1 | 16X14 | 1155 | 1 | 0 | 0 | 0 | 0.0 |
| EGRD3 | FOOD SERVICE | RG-1 | 16X14 | 1155 | 1 | 0 | 0 | 1058 | 91.6 |
| EGRD4 | BOH3 | RG-1 | 16X14 | 1155 | 1 | 1121 | 1121 | 121 | 10.5 |
| Total | | | | 3465 | | 1121 | 1121 | 1179 | 34.03% |

National TAB

Project: 01-26-26 WAWA #7219 LIMA, OH

System/Unit: AHU/RTU



Asset: RTU-2

AREA:SALES

| Unit Data | | |
|---------------------|-----------|------------|
| | Design | Actual |
| MFG | LENNOX | LENNOX |
| Serial Num | - | 5624L00824 |
| Model Num | LGT120H5E | LGT120H5E |
| Type | RTU | RTU |
| Configuration | VERTICAL | VERTICAL |
| Num OA Filters 1 | - | 2 |
| OA Filter Size 1 | - | 15X24" |
| Num Final Filter 1 | - | 4 |
| Final Filter Size 1 | - | 20X25X2" |

| Test Data | | |
|--------------------|--------|--------------|
| | Design | Actual |
| SF CFM | 4000 | 3803 |
| RA CFM | 3300 | 3119 |
| OA CFM | 700 | 684 |
| RL Voltage | - | 212/213/210V |
| RL Amperage | - | 5.6/5.7/5.6A |
| SF System SetPt | - | 79% |
| OA Damper Position | - | 25% |
| OA Damper Type | - | ECONOMIZER |

| Motor Data | | |
|----------------|--------|--------|
| | Design | Actual |
| Horsepower | 3.75 | 3.8 |
| Phase | 3 | 3 |
| Rated Voltage | 208 | 208 |
| Rated Amperage | - | 8.7 |

| Performance Data | | |
|------------------|--------|--------|
| | Design | Actual |
| MA Plenum SP | - | -0.43" |
| Fan Suction SP | - | -0.74" |
| Fan Discharge SP | - | 1.22" |
| Total ESP | 0.70" | 1.65" |
| Fan Total SP | - | 1.96" |

Completed By: Noah Stafford on 01/29/2026

National TAB

Project:01-26-26 WAWA #7219 LIMA, OH

AHU/RTU



Diffuser Supply (GRD)

RTU-2/SALES

| Asset | | | | | | | | | |
|------------|----------------|------|------|------------|-----|--------|--------|-----------|-------------|
| Asset Name | Location | Type | Size | DESIGN CFM | AK | CFM(1) | CFM(2) | FINAL CFM | % to design |
| SGRD1 | RETAIL | SD-6 | 10" | 400 | 1.3 | 384 | 436 | 362 | 90.5 |
| SGRD2 | RETAIL | SD-6 | 10" | 400 | 1.3 | 404 | 443 | 393 | 98.3 |
| SGRD3 | RETAIL | SD-6 | 10" | 400 | 1.3 | 212 | 230 | 373 | 93.3 |
| SGRD4 | RETAIL | SD-6 | 10" | 400 | 1.3 | 464 | 478 | 389 | 97.3 |
| SGRD5 | RETAIL | SD-6 | 10" | 400 | 1.3 | 526 | 545 | 375 | 93.8 |
| SGRD6 | DELIVERTY AREA | SD-1 | 8" | 225 | 1 | 67 | 70 | 199 | 88.4 |
| SGRD7 | ASSOCIATE AREA | SD-1 | 10" | 300 | 1 | 150 | 174 | 304 | 101.3 |
| SGRD8 | NURSING | SD-2 | 6" | 50 | 1 | 29 | 32 | 54 | 108.0 |
| SGRD9 | VEST | SD-5 | 8" | 200 | | 0 | 0 | 181 | 90.5 |
| SGRD10 | RETAIL | SD-6 | 10" | 400 | 1.3 | 859 | 598 | 368 | 92.0 |
| SGRD11 | CLEANING | SD-1 | 6" | 100 | 1 | 161 | 118 | 91 | 91.0 |
| SGRD12 | FAMILY | SD-2 | 6" | 75 | 1 | 91 | 88 | 70 | 93.3 |
| SGRD13 | WOMEN'S RR | SD-3 | 10" | 300 | 1 | 139 | 146 | 295 | 98.3 |
| SGRD14 | MEN'S RR | SD-3 | 10" | 300 | 1 | 349 | 350 | 294 | 98.0 |
| SGRD15 | CLOSET | SD-2 | 6" | 50 | 1 | 29 | 58 | 55 | 110.0 |
| Total | | | | 4000 | | 3864 | 3766 | 3803 | 95.08% |

Diffuser Ret/Exh (GRD)

RTU-2/SALES

| Asset | | | | | | | | | |
|------------|----------|------|-------|------------|----|--------|--------|-----------|-------------|
| Asset Name | Location | Type | Size | DESIGN CFM | AK | CFM(1) | CFM(2) | FINAL CFM | % to design |
| EGRD1 | | | 24X24 | 3300 | 1 | 3119 | 3119 | 3119 | 94.5 |
| Total | | | | 3300 | | 3119 | 3119 | 3119 | 94.52% |

National TAB

Project: 01-26-26 WAWA #7219 LIMA, OH

System/Unit: AHU/RTU



Asset: RTU-3

AREA:FOH

| Unit Data | | |
|---------------------|-----------|------------|
| | Design | Actual |
| MFG | LENNOX | LENNOX |
| Serial Num | - | 5624L05763 |
| Model Num | LGT060H5E | LGT060H5E |
| Type | RTU | RTU |
| Configuration | VERTICAL | VERTICAL |
| Num OA Filters 1 | - | 2 |
| OA Filter Size 1 | - | 15X15" |
| Num Final Filter 1 | - | 4 |
| Final Filter Size 1 | - | 20X20X2" |

| Test Data | | |
|--------------------|--------|--------------|
| | Design | Actual |
| SF CFM | 2000 | 1928 |
| RA CFM | 1600 | 1559 |
| OA CFM | 400 | 369 |
| RL Voltage | - | 215/214/215V |
| RL Amperage | - | 8.7/8.6/8.7A |
| SF System SetPt | - | 59% |
| OA Damper Position | - | 22% |
| OA Damper Type | - | ECONOMIZER |

| Motor Data | | |
|----------------|--------|--------|
| | Design | Actual |
| Horsepower | 1.00 | 1 |
| Phase | 3 | 3 |
| Rated Voltage | 208 | 208 |
| Rated Amperage | - | 7.4 |

| Performance Data | | |
|------------------|--------|--------|
| | Design | Actual |
| MA Plenum SP | - | -0.27" |
| Fan Suction SP | - | -0.44" |
| Fan Discharge SP | - | 0.74' |
| Total ESP | 0.50" | 1.01' |
| Fan Total SP | - | 1.18' |

Completed By: Noah Stafford on 01/29/2026

National TAB

Project:01-26-26 WAWA #7219 LIMA, OH

AHU/RTU



Diffuser Supply (GRD)

RTU-3/FOH

| Asset | | | | | | | | | |
|------------|----------|------|------|------------|------|--------|--------|-----------|-------------|
| Asset Name | Location | Type | Size | DESIGN CFM | AK | CFM(1) | CFM(2) | FINAL CFM | % to design |
| SGRD1 | VEST | SD-5 | 10" | 300 | 1.2 | 70 | 216 | 216 | 72.0 |
| SGRD2 | RETAIL | SD-8 | 10" | 400 | 2.66 | 405 | 420 | 420 | 105.0 |
| SGRD3 | RETAIL | SD-8 | 10" | 400 | 2.66 | 221 | 363 | 363 | 90.8 |
| SGRD4 | RETAIL | SD-1 | 10" | 325 | 1 | 506 | 334 | 334 | 102.8 |
| SGRD5 | RETAIL | SD-1 | 10" | 325 | 1 | 424 | 333 | 333 | 102.5 |
| SGRD6 | OFFICE | SD-1 | 8" | 250 | 1 | 166 | 262 | 262 | 104.8 |
| Total | | | | 2000 | | 1792 | 1928 | 1928 | 96.4% |

Diffuser Ret/Exh (GRD)

RTU-3/FOH

| Asset | | | | | | | | | |
|------------|----------|------|------|------------|----|--------|--------|-----------|-------------|
| Asset Name | Location | Type | Size | DESIGN CFM | AK | CFM(1) | CFM(2) | FINAL CFM | % to design |
| EGRD1 | | | | 1600 | 1 | 1559 | 1559 | 1559 | 97.4 |
| Total | | | | 1600 | | 1559 | 1559 | 1559 | 97.44% |

National TAB

Project: 01-26-26 WAWA #7219 LIMA, OH

System/Unit: AHU/RTU



Asset: RTU-4

AREA: SEATING

| Unit Data | | |
|---------------------|-----------|------------|
| | Design | Actual |
| MFG | LENNOX | LENNOX |
| Serial Num | - | 5624L05772 |
| Model Num | LGT060H5E | LGT060H5E |
| Type | RTU | RTU |
| Configuration | VERTICAL | VERTICAL |
| Num OA Filters 1 | - | 2 |
| OA Filter Size 1 | - | 15X15" |
| Num Final Filter 1 | - | 4 |
| Final Filter Size 1 | - | 20X20X2" |

| Test Data | | |
|--------------------|--------|--------------|
| | Design | Actual |
| SF CFM | 2000 | 2010 |
| RA CFM | 1600 | 1612 |
| OA CFM | 400 | 398 |
| RL Voltage | - | 217/216/216V |
| RL Amperage | - | 8.4/8.4/8.5A |
| SF System SetPt | - | 86% |
| OA Damper Position | - | 23% |
| OA Damper Type | - | ECONOMIZER |

| Motor Data | | |
|----------------|--------|--------|
| | Design | Actual |
| Horsepower | 1.00 | 1 |
| Phase | 3 | 3 |
| Rated Voltage | 208 | 208 |
| Rated Amperage | - | 7.4 |

| Performance Data | | |
|------------------|--------|--------|
| | Design | Actual |
| MA Plenum SP | - | -0.26" |
| Fan Suction SP | - | -0.46" |
| Fan Discharge SP | - | 0.42" |
| Total ESP | 0.50" | 0.68" |
| Fan Total SP | - | 0.88" |

Completed By: Noah Stafford on 01/29/2026

National TAB

Project:01-26-26 WAWA #7219 LIMA, OH

AHU/RTU



Diffuser Supply (GRD)

RTU-4/SEATING

| Asset | | | | | | | | | |
|------------|--------------|------|------|------------|------|--------|--------|-----------|-------------|
| Asset Name | Location | Type | Size | DESIGN CFM | AK | CFM(1) | CFM(2) | FINAL CFM | % to design |
| SGRD1 | RETAIL | SD-6 | 10" | 400 | 1.14 | 611 | 533 | 429 | 107.3 |
| SGRD2 | SEATING AREA | SD-7 | 16" | 400 | 1.67 | 296 | 408 | 379 | 94.8 |
| SGRD3 | SEATING AREA | SD-7 | 16" | 400 | 1.67 | 0 | 251 | 397 | 99.3 |
| SGRD4 | SEATING AREA | SD-7 | 16" | 400 | 1.67 | 0 | 0 | 419 | 104.8 |
| SGRD5 | RETAIL | SD-6 | 10" | 400 | 1.14 | 703 | 643 | 386 | 96.5 |
| Total | | | | 2000 | | 1610 | 1835 | 2010 | 100.5% |

Diffuser Ret/Exh (GRD)

RTU-4/SEATING

| Asset | | | | | | | | | |
|------------|-----------------------|------|-------|------------|----|--------|--------|-----------|-------------|
| Asset Name | Location | Type | Size | DESIGN CFM | AK | CFM(1) | CFM(2) | FINAL CFM | % to design |
| EGRD1 | SELF SERVICE BEVERAGE | | 18X20 | 1600 | 1 | 1612 | 1612 | 1612 | 100.8 |
| Total | | | | 1600 | | 1612 | 1612 | 1612 | 100.75% |

National TAB

Project: 01-26-26 WAWA #7219 LIMA, OH
System/Unit: FAN - Exhaust



Asset: EF-1

AREA:RESTROOMS

| Unit Data | | |
|---------------|-----------|-----------|
| | Design | Actual |
| MFG | GREENHECK | GREENHECK |
| Model Num | GB-130 | GB-130 |
| Serial Num | - | 28025566 |
| Type | DOWNBLAST | DOWNBLAST |
| Configuration | VERTICAL | VERTICAL |

| Motor Data | | |
|------------------|--------|-----------|
| | Design | Actual |
| Motor MFG | - | US MOTORS |
| Horsepower | 0.25 | 0.33 |
| Motor Rpm | - | 1725 |
| Phase | 1 | 1 |
| Voltage (rated) | 120 | 115 |
| Amperage (rated) | - | 5.8 |
| Service Factor | - | 1.35 |

| Drive Data | |
|-------------------|---------|
| | Actual |
| Motor Sheave Size | VP40 4" |
| Motor Bore Size | 0.5" |
| Fan Sheave Size | 4.25" |
| Fan Sheave Bore | 0.75" |
| Belt CL Distance | 5" |
| Num of Belts | 1 |
| Belt Size | A20 |

| Test Data | | |
|---------------|--------|--------|
| | Design | Actual |
| CFM | 1500 | 1723 |
| Fan RPM | - | 1363 |
| Fan Rotation | - | CCW |
| Motor RPM | - | 1725 |
| RL Voltage | - | 115V |
| RL Amperage | - | 5.8A |
| Suction ESP | - | -0.43" |
| Discharge ESP | - | ATM |
| Total ESP | 0.55" | 0.43" |

Completed By: Noah Stafford on 02/25/2026

Notes:
GRILLE TOTAL AIRFLOW LOW

Written By: Noah Stafford on 01/30/2026

National TAB

Project:01-26-26 WAWA #7219 LIMA, OH

FAN - Exhaust



Diffuser Ret/Exh (GRD)

EF-1/RESTROOMS

| Asset | | | | | | | | | |
|------------|------------|------|-------|------------|----|--------|--------|-----------|-------------|
| Asset Name | Location | Type | Size | DESIGN CFM | AK | CFM(1) | CFM(2) | FINAL CFM | % to design |
| EGRD1 | CLOSET | EG-1 | 6X6 | 100 | 1 | 69 | 69 | 81 | 81.0 |
| EGRD2 | FAMILY | EG-1 | 6X6 | 100 | 1 | 78 | 85 | 99 | 99.0 |
| EGRD3 | MEN'S RR | EG-1 | 10X10 | 425 | 1 | 118 | 204 | 293 | 68.9 |
| EGRD4 | MEN'S RR | EG-1 | 10X10 | 425 | 1 | 272 | 281 | 260 | 61.2 |
| EGRD5 | WOMEN'S RR | EG-1 | 10X10 | 450 | 1 | 189 | 117 | 204 | 45.3 |
| Total | | | | 1500 | | 726 | 756 | 937 | 62.47% |

National TAB

Project: 01-26-26 WAWA #7219 LIMA, OH
System/Unit: FAN - Exhaust



Asset: EF-2

AREA:BACK OF HOUSE

| Unit Data | | |
|---------------|-----------|-----------|
| | Design | Actual |
| MFG | GREENHECK | GREENHECK |
| Model Num | G-090-VG | G-090-VG |
| Serial Num | - | 28025567 |
| Type | DOWNBLAST | DOWNBLAST |
| Configuration | VERTICAL | VERTICAL |

| Motor Data | | |
|------------------|--------|------------|
| | Design | Actual |
| Motor MFG | - | VARI GREEN |
| Horsepower | 0.167 | 0.10 |
| Motor Rpm | - | 1750 |
| Phase | 1 | 1 |
| Voltage (rated) | 120 | 115 |
| Amperage (rated) | - | 1.38 |

| Test Data | | |
|------------------|--------|--------|
| | Design | Actual |
| CFM | 400 | 442 |
| Fan Rotation | - | CW |
| RL Voltage | - | 115V |
| RL Amperage | - | 1.7A |
| Total ESP | 0.38" | 0.82" |
| Fan Inlet SP | - | -0.82" |
| Fan Discharge SP | - | ATM |

Completed By: Noah Stafford on 01/29/2026

Notes:
NO SPEED CONTROL
OVER AMPERAGE, CANNOT TURN DOWN

Written By: Noah Stafford on 01/29/2026

National TAB

Project:01-26-26 WAWA #7219 LIMA, OH

FAN - Exhaust



Diffuser Ret/Exh (GRD)

EF-2/BACK OF HOUSE

| Asset | | | | | | | | | |
|------------|--------------|------|------|------------|----|--------|--------|-----------|-------------|
| Asset Name | Location | Type | Size | DESIGN CFM | AK | CFM(1) | CFM(2) | FINAL CFM | % to design |
| EGRD1 | FOOD SERVICE | RG-2 | 8X8 | 200 | 1 | 84 | 193 | 205 | 102.5 |
| EGRD2 | BOH-1 | RG-2 | 8X8 | 200 | 1 | 36 | 249 | 241 | 120.5 |
| Total | | | | 400 | | 120 | 442 | 446 | 111.5% |

National TAB

Project: 01-26-26 WAWA #7219 LIMA, OH
System/Unit: FAN - Exhaust



Asset: EF-3

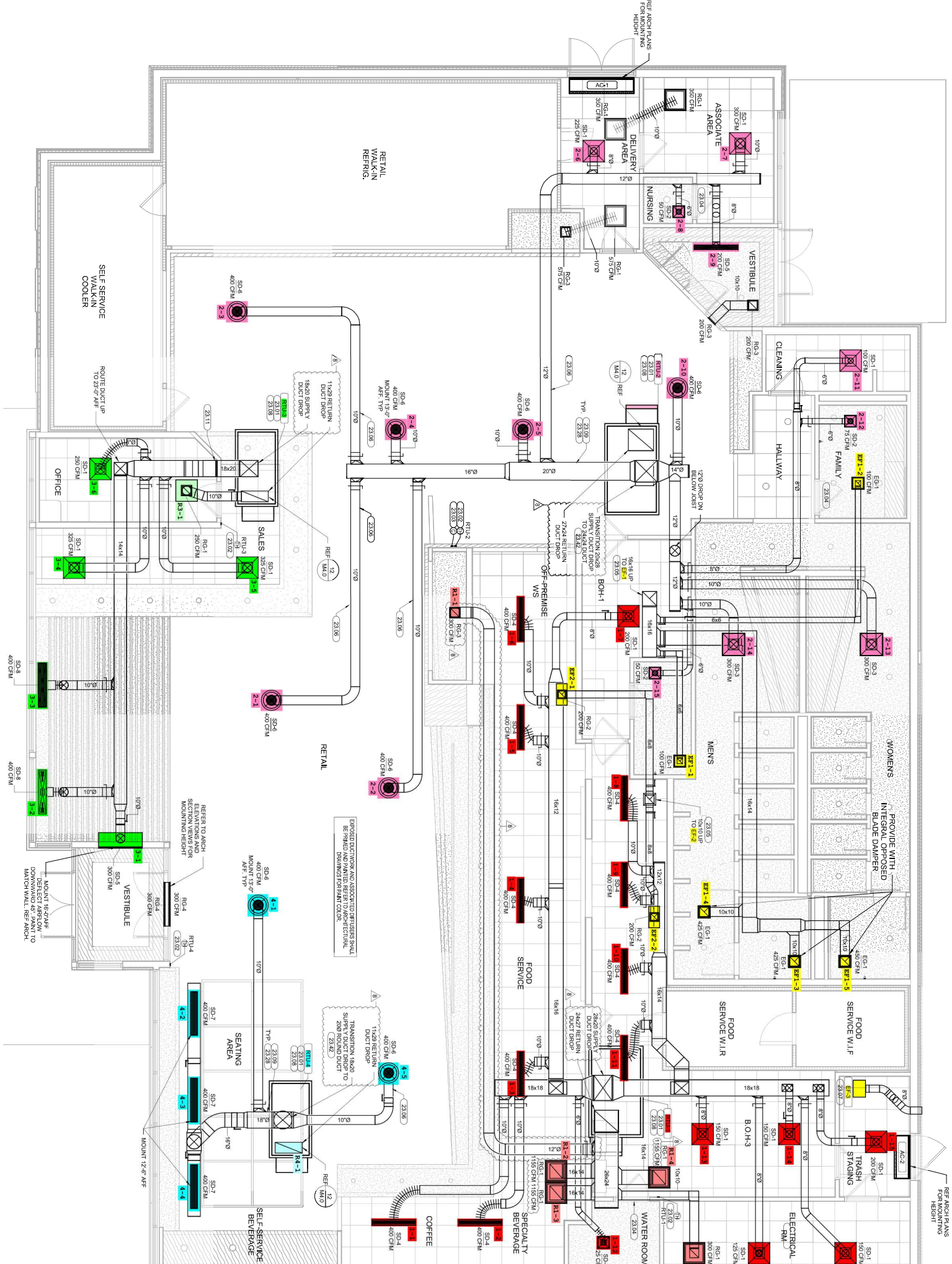
AREA: TRASH ROOM

| Unit Data | | |
|----------------------|-----------|-----------|
| | Design | Actual |
| MFG | GREENHECK | GREENHECK |
| Model Num | SP-B200 | SP-B200 |
| Serial Num | - | 28025018 |
| Type | CEILING | CEILING |
| Configuration | VERTICAL | VERTICAL |

| Test Data | | |
|---------------------|--------|--------|
| | Design | Actual |
| CFM | 200 | 57 |
| Fan Rotation | - | CCW |
| System SetPt | - | 100% |
| RL Voltage | - | 115V |
| RL Amperage | - | 1.7A |

| Motor Data | | |
|-------------------------|--------|-----------|
| | Design | Actual |
| Motor MFG | - | GREENHECK |
| Horsepower | 0.167 | 0.033 |
| Motor Rpm | - | 1000 |
| Phase | 1 | 1 |
| Voltage (rated) | 120 | 115 |
| Amperage (rated) | - | 2.7 |

Completed By: Noah Stafford on 02/25/2026



EXPOSED DUCTWORK AND ASSOCIATED FITTINGS SHALL BE FINISHED AND PAINTED. REFER TO ARCHITECTURAL DRAWINGS FOR FINISH AND COLOR.

REFER TO ARCH ELEVATIONS AND SECTION VIEWS FOR MOUNTING HEIGHT.