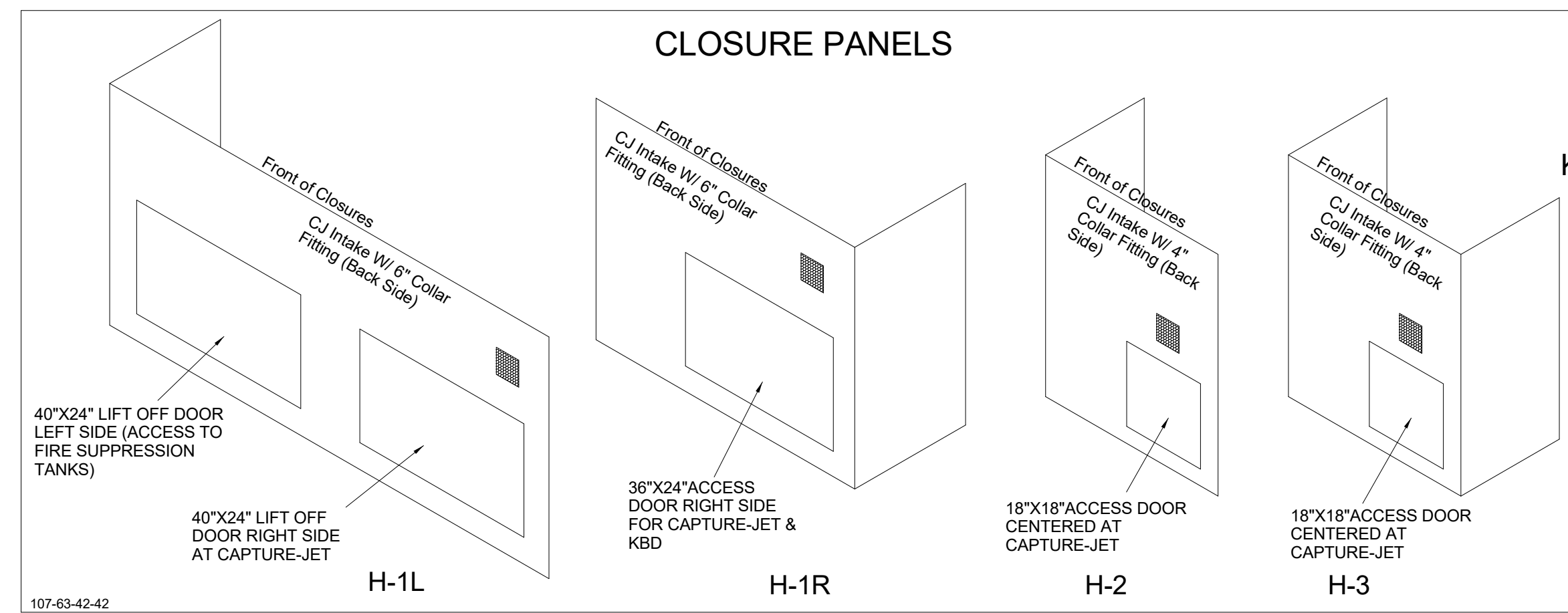


HOOD MODEL	HOOD NUMBER	QTY	EXHAUST COLLAR			EXHAUST AIR INFORMATION			CAPTURE AIR INFORMATION		S.S. KSA FILTERS		LED LIGHTS	QTY	CEILING CLOSURES			KBD DAMPER	K FACTOR (CFM = K FACTOR * √DP)	MATERIAL
			LENGTH	WIDTH	CFM	TAB	SP	CFM	SP	FULL	HALF	CLOSURE HEIGHT			CEILING HEIGHT	HOOD WEIGHT	K FACTOR			
KVL-2-IC	H-1L	1	14"	8"	1204	0.13"	0.22"	80	0.30"	5	-	3	2	51"	122"	669 LBS	*	3365	EXPOSED SURFACES 18 GA. S.S.	
KVL-2-IC	H-1R	1	8"	8"	709	0.13"	0.23"	47	0.30"	3	-	2	2			394 LBS	*	1959		
KVL-C-IC	H-2	1	8"	8"	701	0.30"	0.39"	30	0.29"	2	-	1	2			245 LBS	*	1291		
KVL-C-IC	H-3	1	8"	8"	701	0.30"	0.39"	30	0.29"	2	-	1	3			245 LBS	*	1291		

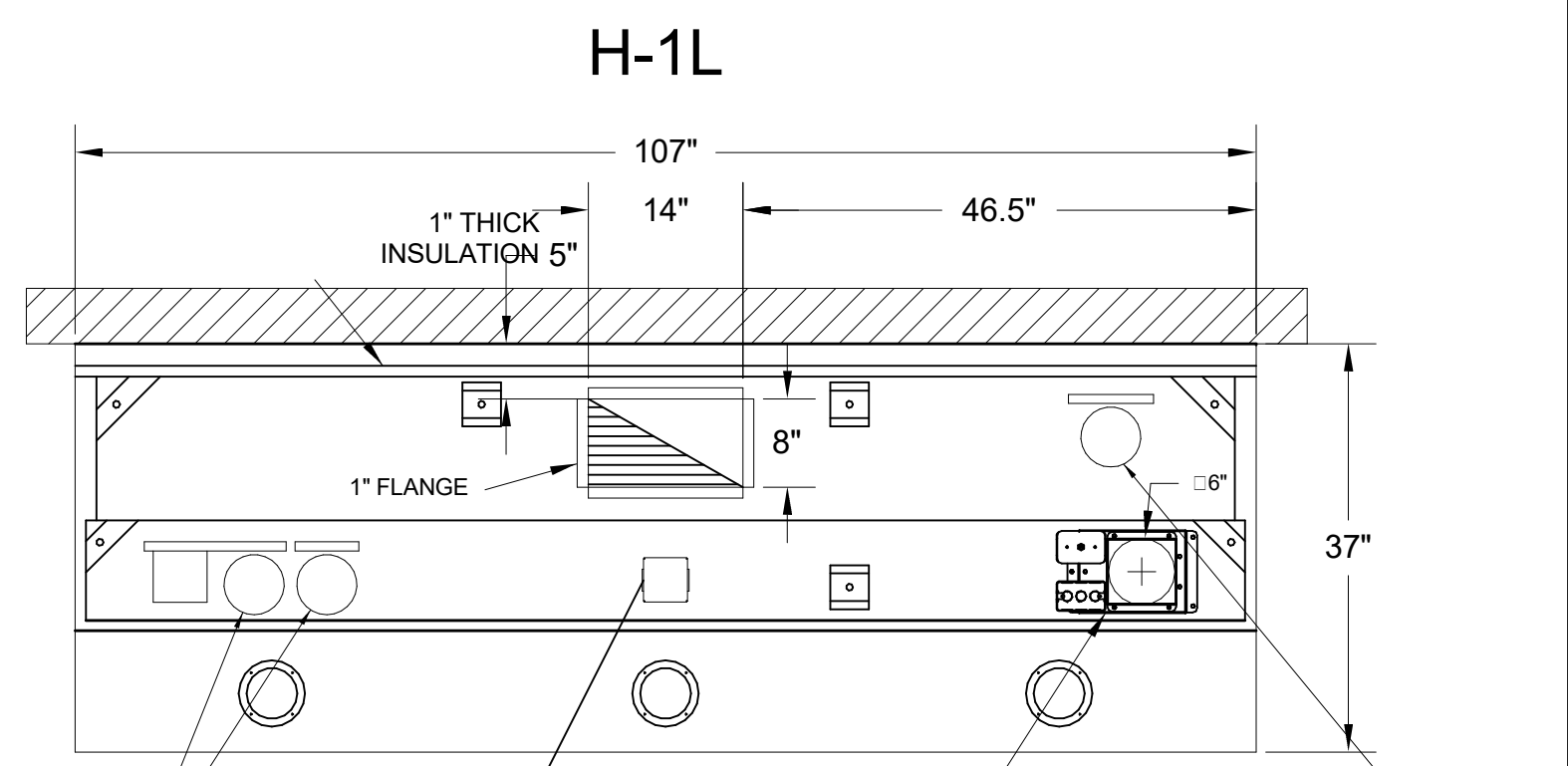
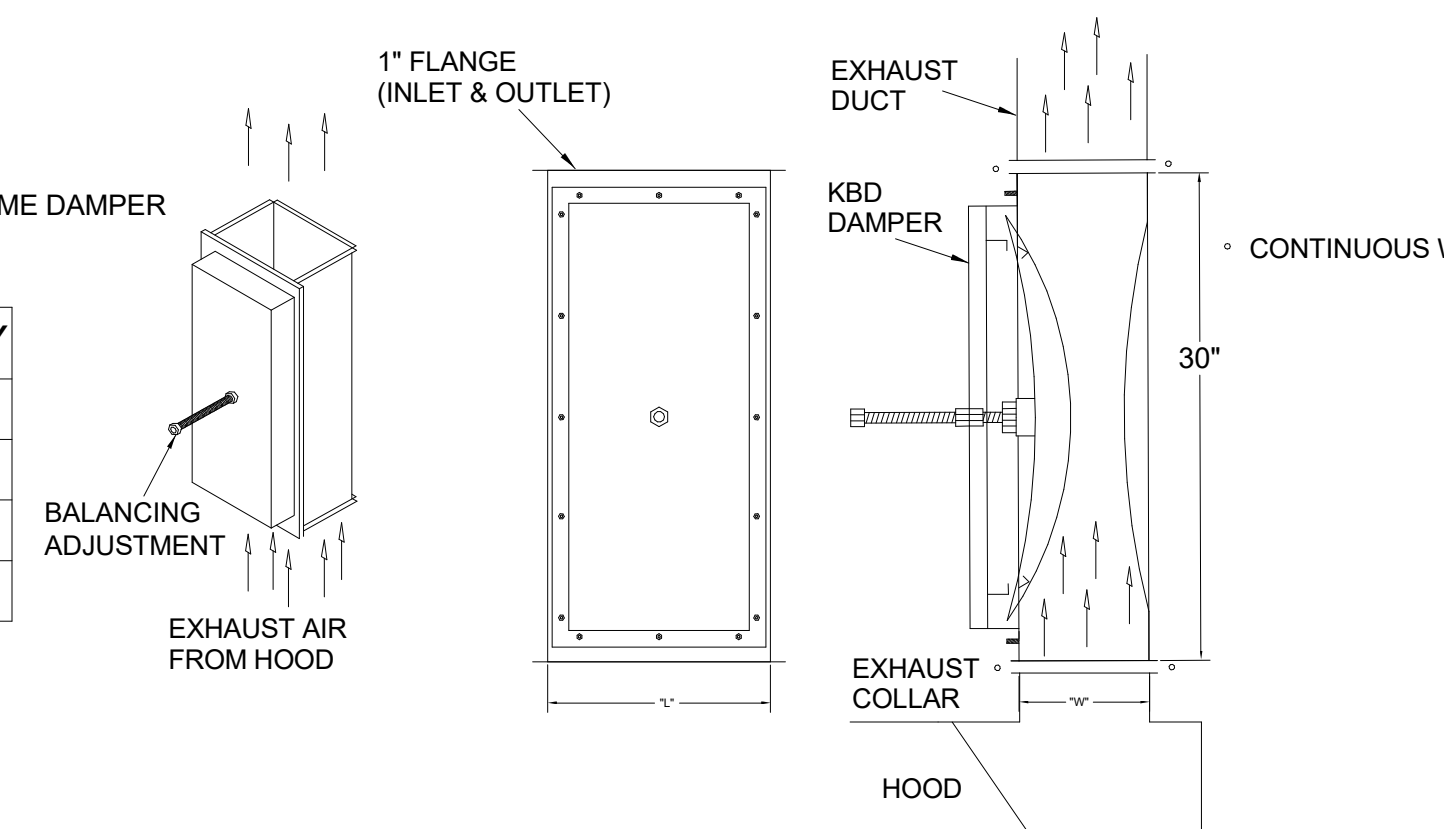
FOR REFERENCE ONLY



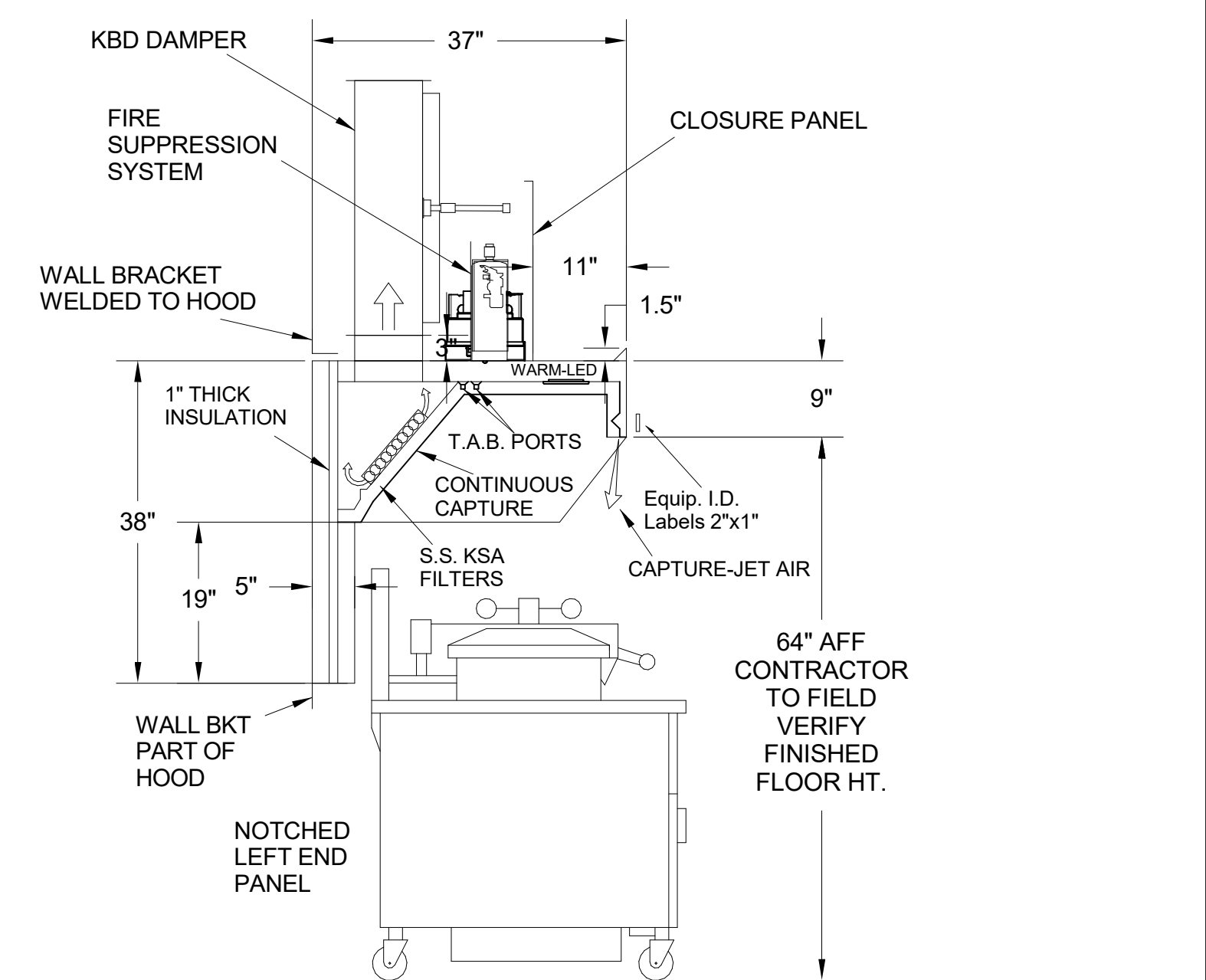
**MODEL:KBD
CALIBRATED
KITCHEN BALANCING DAMPER**

TAG	"L"	"W"	QUANTITY
H-1L	14"	8"	1
H-1R	8"	8"	1
H-2	8"	8"	1
H-3	8"	8"	1

MATERIAL: FRAME - 16GA CONT. GALV.
ADJUSTABLE PANEL 18GA S.S.

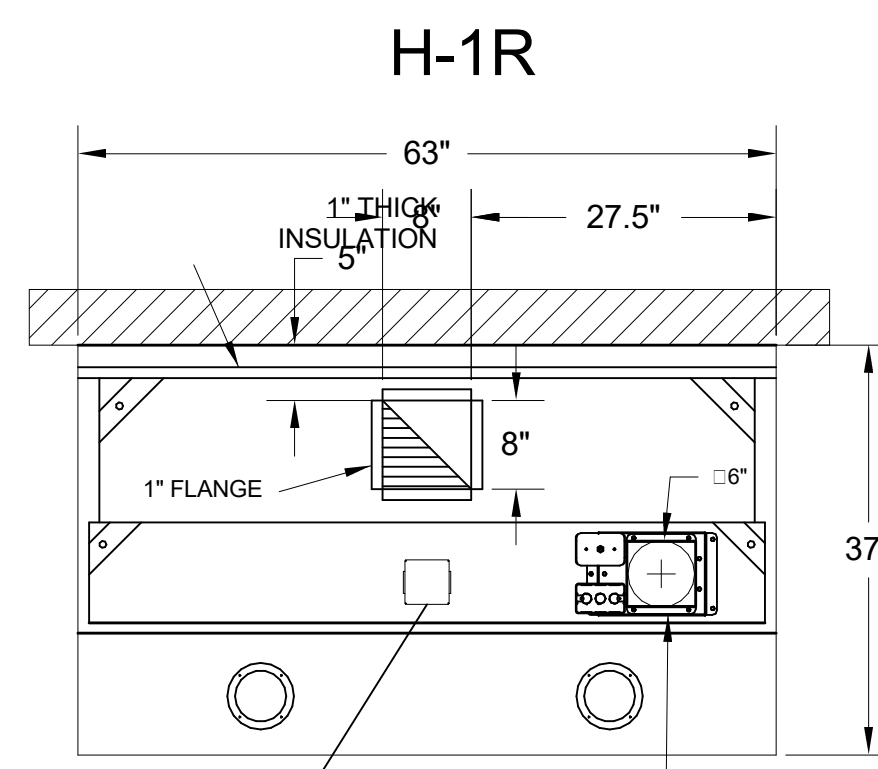
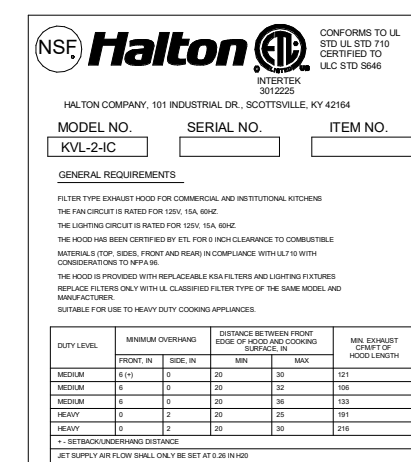


PLAN VIEW

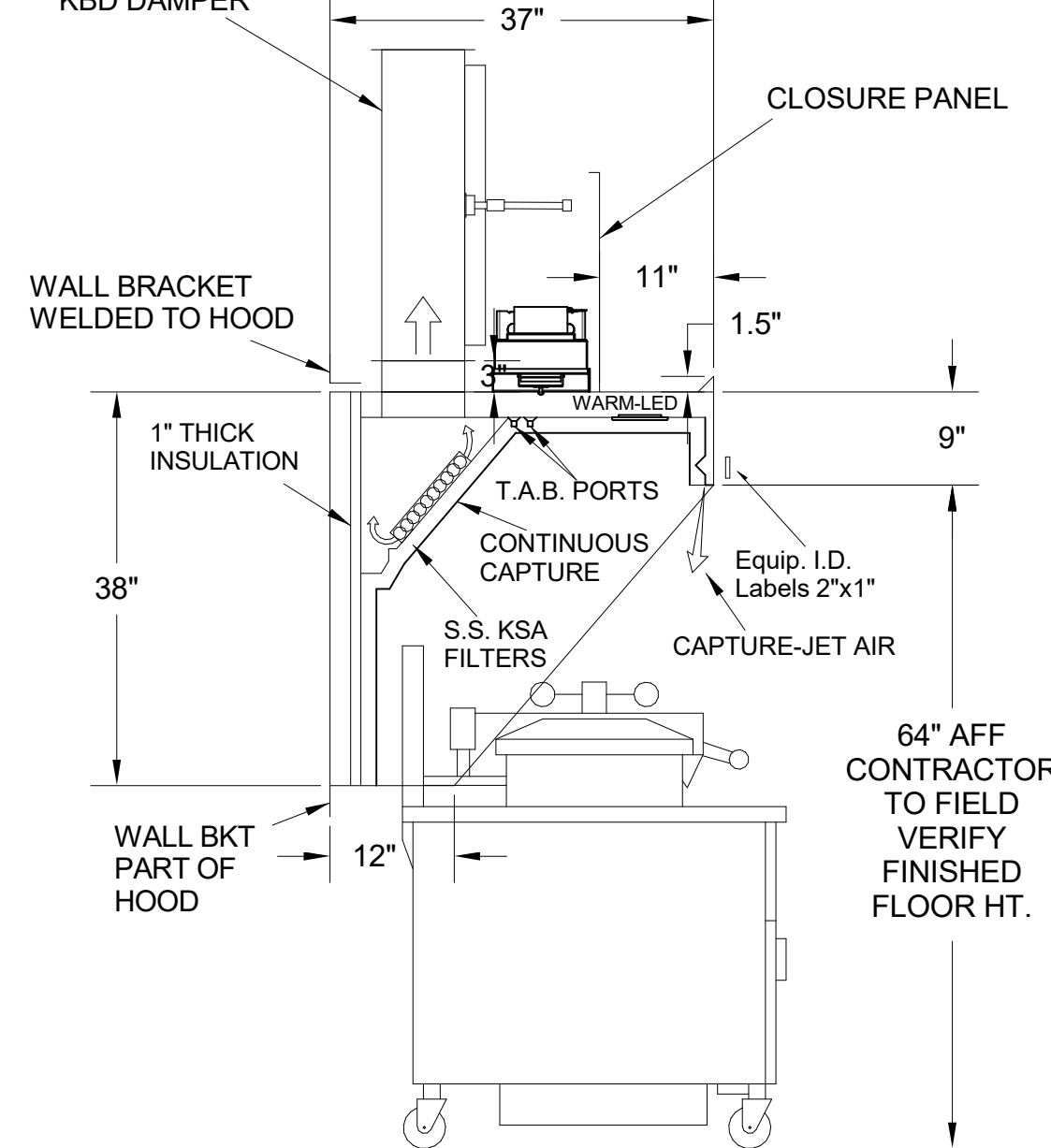


H-1L SECTION VIEW

- CEILING CLOSURE RECESSED 11" FROM FRONT TO CREATE SHELF
- FRONT CLOSURE PANEL WITH 40"x24" LIFT OUT DOOR LEFT SIDE (ACCESS TO FIRE SUPPRESSION)
- 40"x24" LIFT DOOR RIGHT SIDE AT CAPTURE-JET WITH FRONT CJ INTAKE
- CONTINUOUS CAPTURE INTERNAL RIGHT END CUTOUT
- 3" REAR STAND-OFF TO HAVE 1" THICK INSULATION
- NOTCHED LEFT END PANEL
- EQUIPMENT COVERED:
(4) PRESSURE FRYERS
(2) GRILLS
- ANSUL WEIGHT = 286 LBS
- AMEREX WEIGHT = 264 LBS

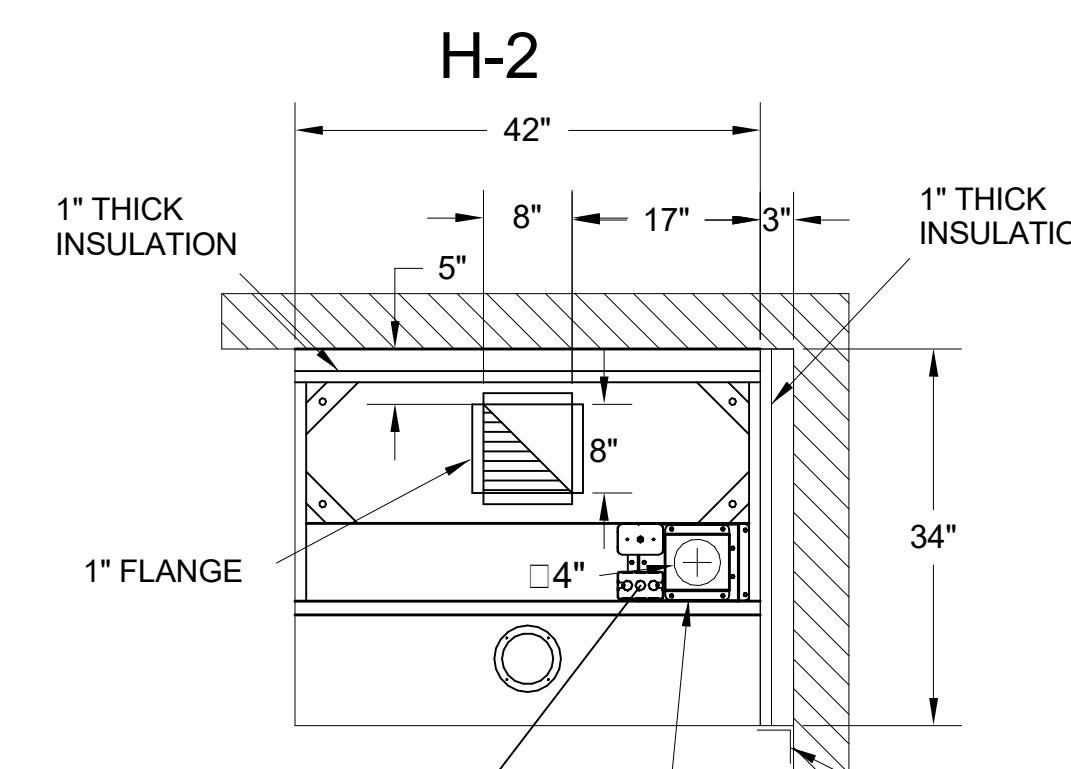
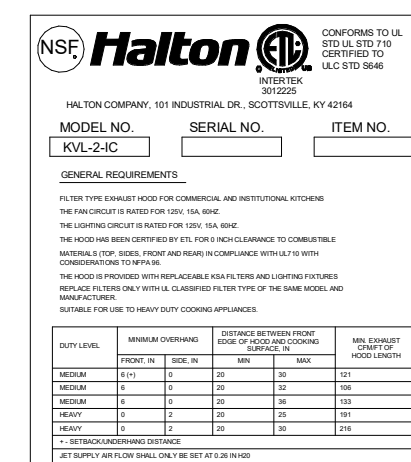


PLAN VIEW

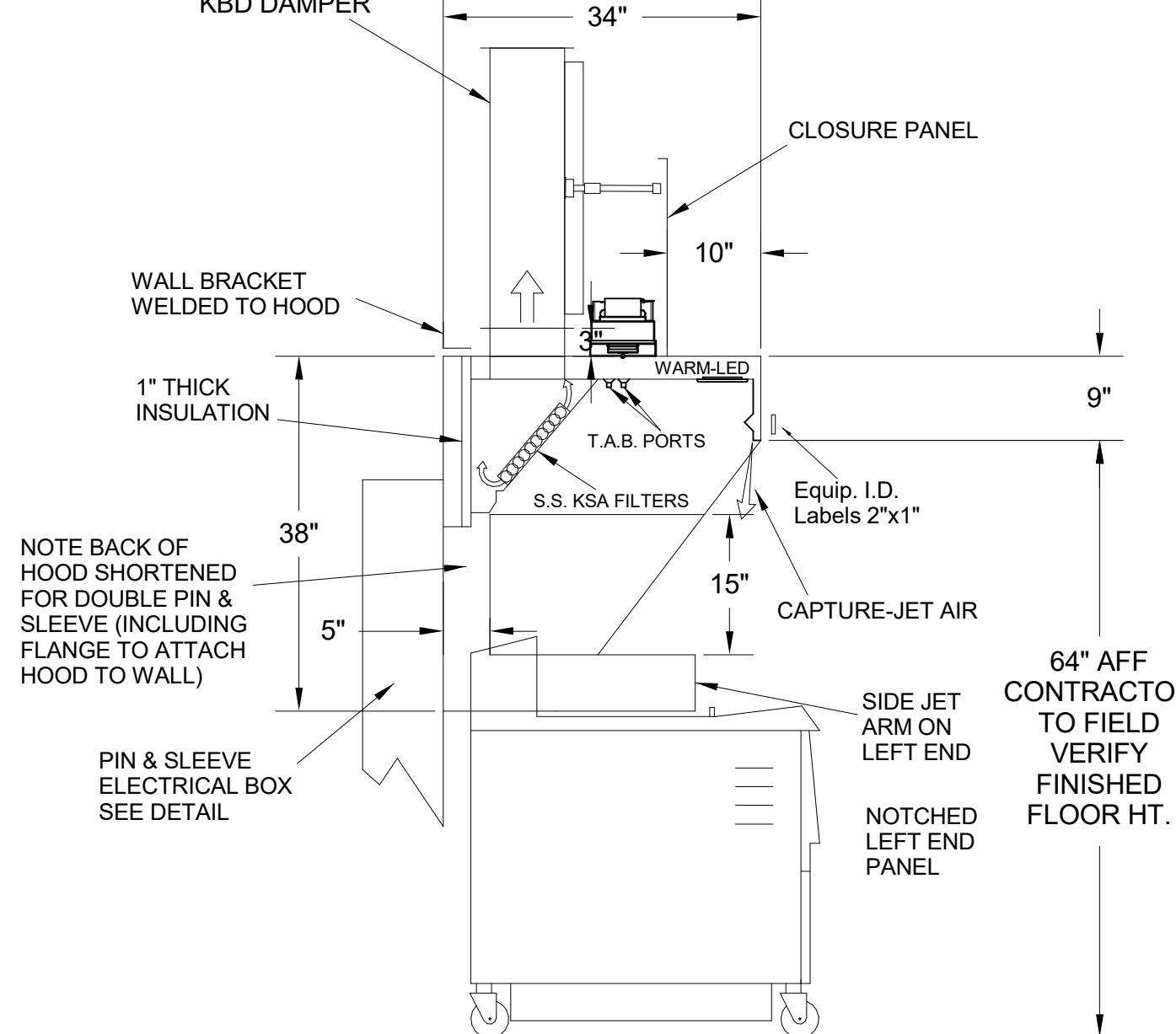


H-1R SECTION VIEW

- CEILING CLOSURE RECESSED 11" FROM FRONT TO CREATE SHELF
- 36"x24" ACCESS DOOR RIGHT SIDE FOR ACCESS TO CAPTURE-JET WITH FRONT CJ INTAKE & KBD
- CONTINUOUS CAPTURE INTERNAL LEFT END CUTOUT
- 3" REAR STAND-OFF TO HAVE 1" THICK INSULATION
- EQUIPMENT COVERED:
(3) PRESSURE FRYERS

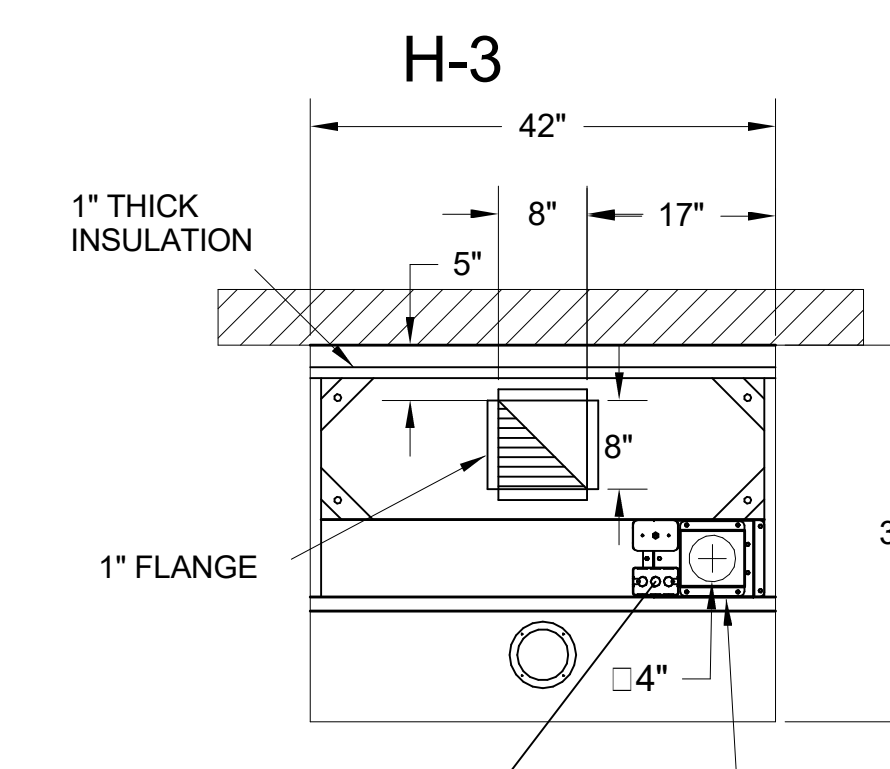
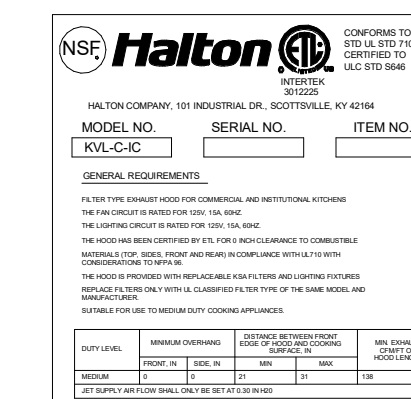


PLAN VIEW

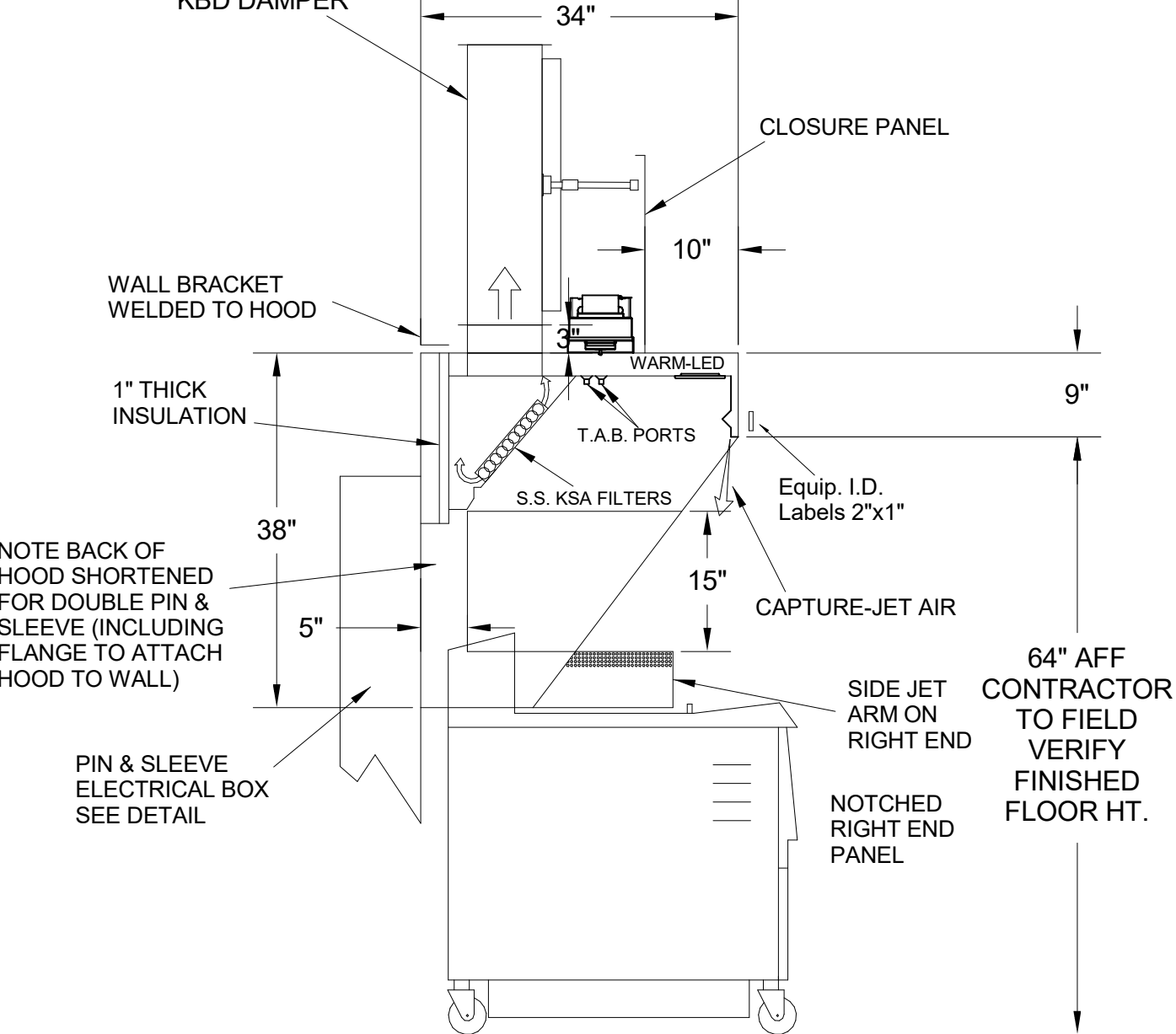


H-2 SECTION VIEW

- CEILING CLOSURE RECESSED 10" FROM FRONT TO CREATE SHELF
- 18"x18" ACCESS DOOR CENTERED AT CAPTURE-JET WITH FRONT CJ INTAKE
- NOTCHED LEFT END PANEL
- DOUBLE RECEPTACLE PIN & SLEEVE
- 3"x3" TRIM STRIP FOR STANDOFF ON RIGHT END
- 3" SIDE & REAR STAND-OFF TO HAVE 1" THICK INSULATION
- EQUIPMENT COVERED:
(2) FRYERS

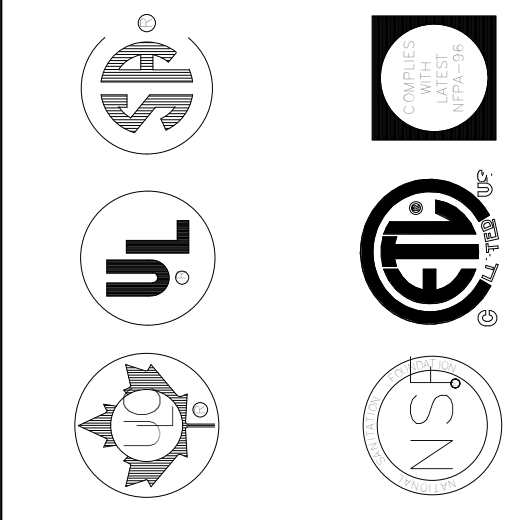


PLAN VIEW



H-3 SECTION VIEW

- CEILING CLOSURE RECESSED 10" FROM FRONT TO CREATE SHELF
- 18"x18" ACCESS DOOR CENTERED AT CAPTURE-JET WITH FRONT CJ INTAKE
- NOTCHED RIGHT END PANEL
- DOUBLE RECEPTACLE PIN & SLEEVE
- 3" REAR STAND-OFF TO HAVE 1" THICK INSULATION
- EQUIPMENT COVERED:
(2) FRYERS



MAIL APPROVED DRAWINGS TO APPROPRIATE FACTORY. BELOW WEBSITE: WWW.HALTONCOMPANY.COM

DATE	BY	REVISION DESCRIPTION

PROJECT: **CHICK-FL-A**

LOCATION: **RICHMOND FSU**

DRAWN BY: **NTS** DATE: **04/25/2024**

SCALE: **1/8" = 1'-0"**

SN#: **05709**

Halton logo: **Halton**
CARE FOR INDOOR AIR

ISO VIEW
W/BRACKET

FIRE EXTINGUISHER

ANSUL

13051 5 LBS ABC MODEL AA05 QTY _____

13052 10 LBS ABC MODEL AA10S QTY _____

13053 6 LTR CLASS K-GUARD K01-3 QTY _____

SUPPLIED BY
HALTON

NOTE:
FIRE SYSTEM TYPE TO BE
DETERMINED AT TIME OF
ORDER RELEASE.

ANSUL

FUSIBLE LINK RATINGS
ITEM TEMP
OPEN FRYERS 450°
2 BURNER / FLAT TOP 450°
PRESSURE FRYERS 450°
GRILL 450°
EXHAUST COLLARS 450°
ANSUL R-102 FIRE SYSTEM NOTES
THREE TANK SYSTEM MOUNTED ON TOP OF (H-1L)
MAXIMUM FLOW POINTS = 33
ANSUL R-102 FIRE SYSTEM NOTES
TWO TANK SYSTEM REMOTE MOUNTED
MAXIMUM FLOW POINTS = 22

ANSUL MICROSWITCH DETAIL

POWER TO COOKING EQUIPMENT SHUNT TRIP BREAKER (BY OTHERS)

VOLTAGE FREE NO CONTACTS FOR INTERCONNECTION TO THE MUA HVAC SYSTEM

VOLTAGE FREE NO CONTACTS FOR INTERCONNECTION TO THE BUILDING ALARM SYSTEM

VOLTAGE FREE NO CONTACTS FOR INTERCONNECTION TO THE COOKING EQUIP. SHUNT TRIP

VOLTAGE FREE EXTRA CONTACTS

UPPER SWITCHES: BLACK, RED, BROWN, BLACK, RED, BROWN

LOWER SWITCHES: BLACK, RED, BROWN, BLACK, RED, BROWN

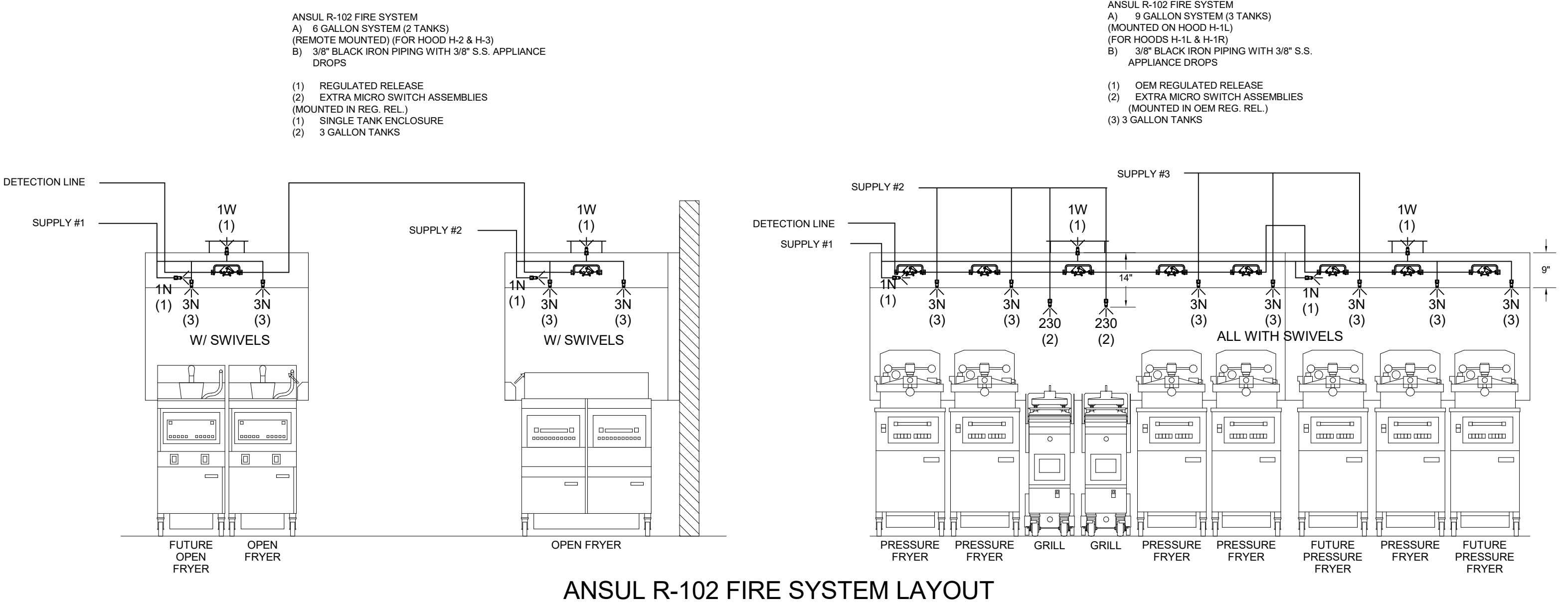
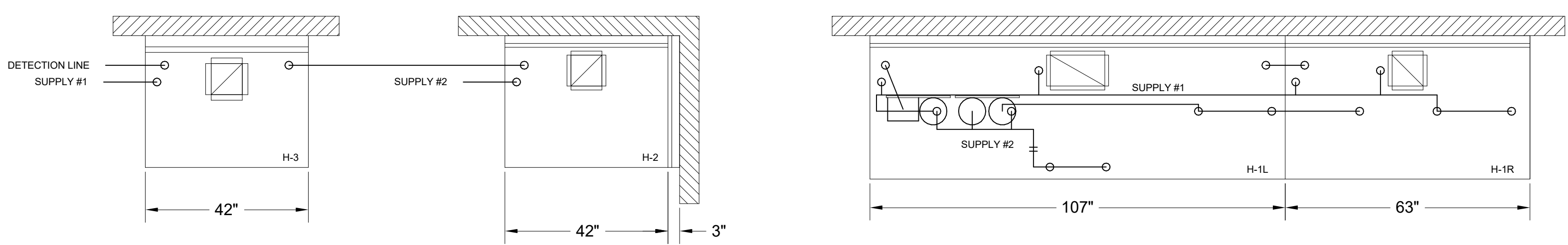
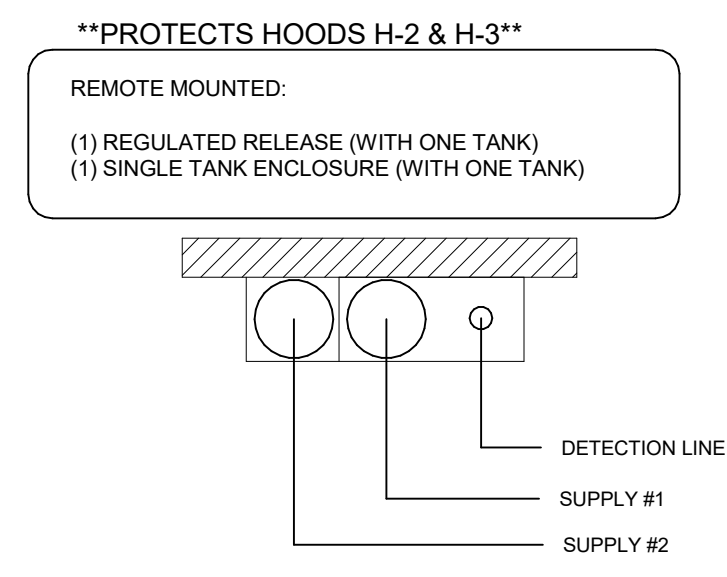
UPPER SWITCH: RED (COMMON), BLACK (NORMALLY OPEN), BROWN (NORMALLY CLOSED)

LOWER SWITCH: BROWN (NORMALLY OPEN), BLACK (NORMALLY CLOSED), RED (COMMON)

SNAP ACTION SWITCHES CONTACTS SHOWN WITH AUTOMAN IN THE COOKED POSITION (READY) 21 AMP, 125/250 VAC SWITCHES

MICRO-SWITCH 4 SWITCHES INCLUDED

FIELD WIRING BY ELECTRICAL CONTRACTOR



FOR REFERENCE ONLY

ITEM	PART #	QTY	DESCRIPTION	FLOW PTS (TOTAL)
1W	10023	4	DUCT NOZZLES	4
1N	10022	4	PLENUM NOZZLES	4
230	10025	2	APPLIANCE NOZZLES	4
3N	10021	11	APPLIANCE NOZZLES	33
TOTAL FLOW POINTS				45
ITEM	QTY	DESCRIPTION		
#200	10035	8	SERIES DETECTORS W/ FUSIBLE LINKS	
#201	11973	2	TERMINAL DETECTORS W/ FUSIBLE LINKS	
#202	10046	1	OEM REGULATED RELEASE W/ DOUBLE POLE MICRO SWITCH	
#203	10033	1	REGULATED RELEASE W/ DOUBLE POLE MICRO SWITCH	
#202	10033	5	3 GALLON TANKS	
#204	10044	1	SINGLE TANK ENCLOSURE	
#205	10040	2	REMOTE PULL STATION	
#206	10065	4	DOUBLE TANK NITROGEN CARTRIDGE	
#207	11128	5	3 GALLON ANSULEX CONTAINER	

ANSUL R-102 FIRE SYSTEM
UL LISTED PER STD LATEST STD 300

- FINAL INSTALLATION IS TO BE MADE IN ACCORDANCE WITH ALL APPLICABLE CODES
- ALL ELECTRICAL COMPONENTS FOR EQUIPMENT SHUT DOWN TO BE PROVIDED BY THE ELECTRICIAN. MICRO-SWITCH INSTALLED IN REGULATED RELEASE BY ANSUL INSTALLER
- REMOTE PULL STATION LOCATED PER MECHANICAL DRAWINGS

ISO VIEW
W/BRACKET

FIRE EXTINGUISHER

AMEREX

11238 5 LBS ABC MODEL B402 QTY _____

11239 10 LBS ABC MODEL B456 QTY _____

11240 6 LTR CLASS K MODEL C-260 QTY _____

SUPPLIED BY
HALTON

1/2" BLACK IRON SUPPLY LINE REQ'D FROM TANK TO FIRST BRANCH LINE FOR 475 TANKS ONLY!

AMEREX

FUSIBLE LINK RATINGS
ITEM TEMP
OPEN FRYERS 450°
2 BURNER / FLAT TOP 450°
PRESSURE FRYERS 450°
GRILL 450°
EXHAUST COLLARS 450°
AMEREX FIRE SYSTEM NOTES
(1) KP375 & (2) KP475 TANK SYSTEM MOUNTED ON TOP OF (H-1L)
MAXIMUM FLOW POINTS = 39
AMEREX FIRE SYSTEM NOTES
(1) KP475 TANK SYSTEM REMOTE MOUNTED
MAXIMUM FLOW POINTS = 14

AMEREX MICROSWITCH DETAIL

POWER TO COOKING EQUIPMENT SHUNT TRIP BREAKER (BY OTHERS)

VOLTAGE FREE NO CONTACTS FOR INTERCONNECTION TO THE MUA HVAC SYSTEM

VOLTAGE FREE NO CONTACTS FOR INTERCONNECTION TO THE BUILDING ALARM SYSTEM

VOLTAGE FREE NO CONTACTS FOR INTERCONNECTION TO THE COOKING EQUIP. SHUNT TRIP

VOLTAGE FREE EXTRA CONTACTS

UPPER SWITCHES: BLACK, RED, YELLOW, BLACK, RED, YELLOW

LOWER SWITCHES: BLACK, RED, YELLOW, BLACK, RED, YELLOW

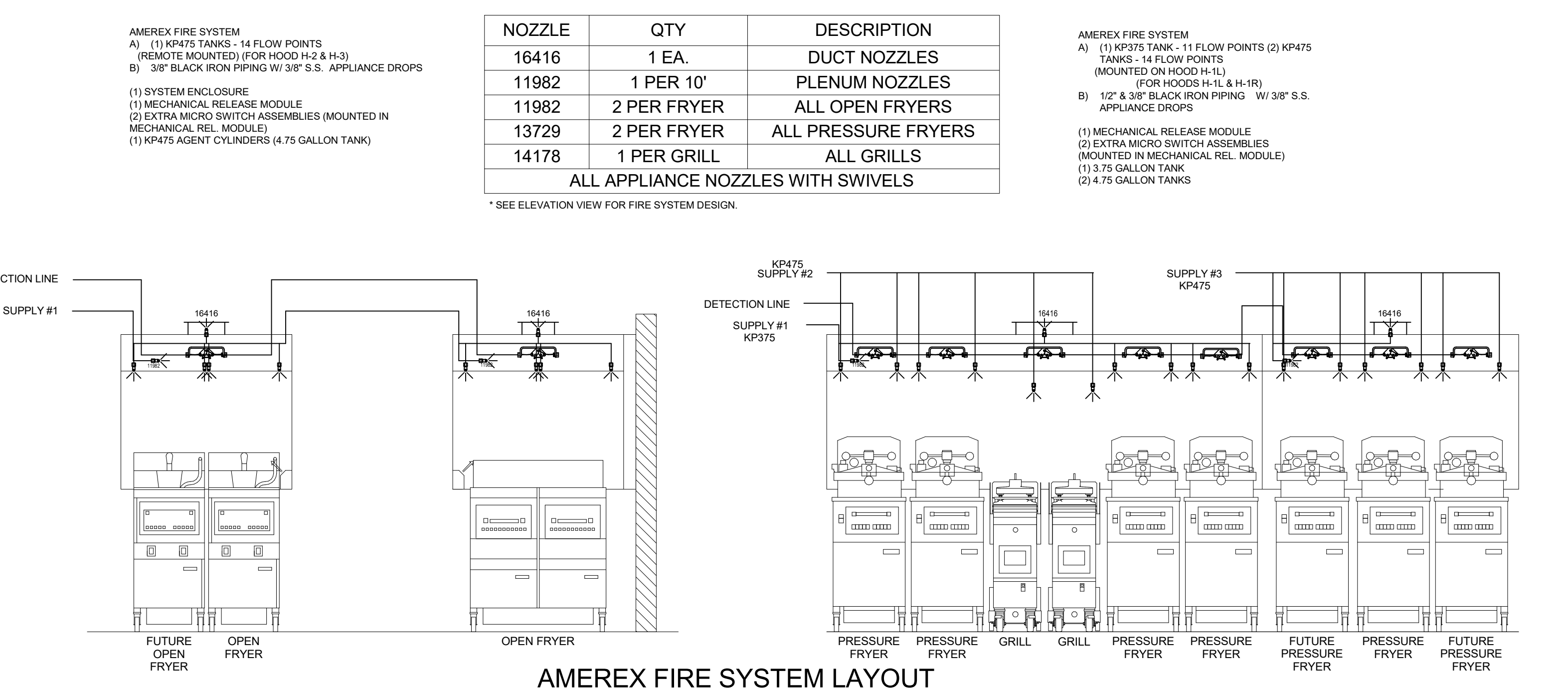
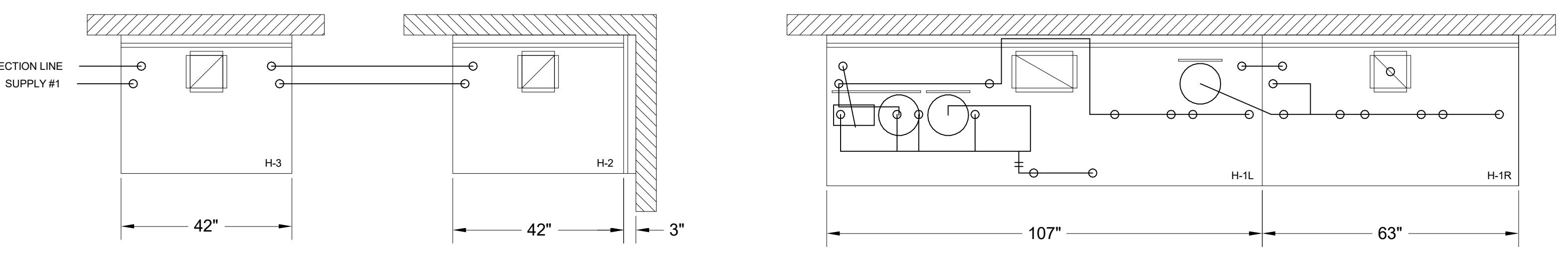
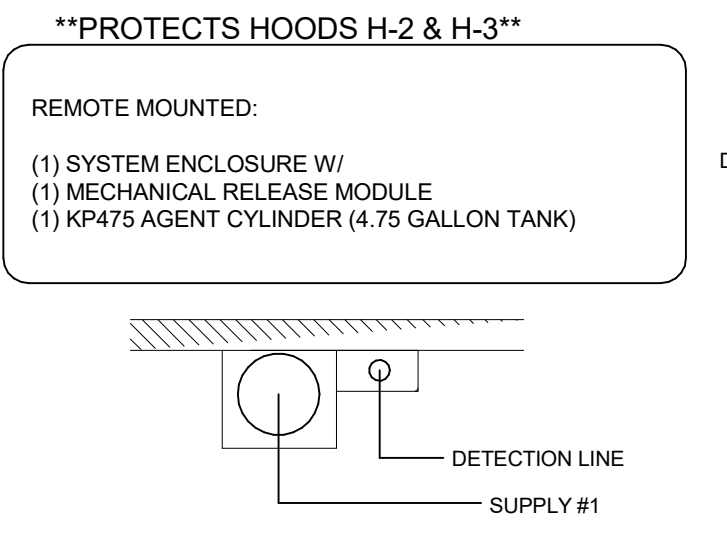
UPPER SWITCH: RED (COMMON), BLACK (NORMALLY OPEN), BROWN (NORMALLY CLOSED)

LOWER SWITCH: BROWN (NORMALLY OPEN), BLACK (NORMALLY CLOSED), RED (COMMON)

SNAP ACTION SWITCHES CONTACTS SHOWN WITH AUTOMAN IN THE COOKED POSITION (READY) 21 AMP, 125/250 VAC SWITCHES

MICRO-SWITCH 4 SWITCHES INCLUDED

FIELD WIRING BY ELECTRICAL CONTRACTOR



NOZZLE	QTY	DESCRIPTION
16416	1 EA.	DUCT NOZZLES
11982	1 PER 10'	PLENUM NOZZLES
11982	2 PER FRYER	ALL OPEN FRYERS
13729	2 PER FRYER	ALL PRESSURE FRYERS
14178	1 PER GRILL	ALL GRILLS
ALL APPLIANCE NOZZLES WITH SWIVELS		

*SEE ELEVATION VIEW FOR FIRE SYSTEM DESIGN.

ITEM	QTY	DESCRIPTION	FLOW PTS (TOTAL)	
16416	4	DUCT NOZZLES	4	
11982	4	PLENUM NOZZLES	4	
11982	8	APPLIANCE NOZZLES	8	
14178	2	APPLIANCE NOZZLES	2	
13729	14	APPLIANCE NOZZLES	28	
TOTAL FLOW POINTS				48
ITEM	QTY	DESCRIPTION		
12508-P001	10	DETECTORS BRACKET ASSEMBLY		
13334	1	KP375 AGENT CYLINDER		
17379	3	KP475 AGENT CYLINDER		
18001	1	MECHANICAL RELEASE MODULE WITH ENCLOSURE WITH DOUBLE POLE MICRO SWITCH		
11977	1	MECHANICAL RELEASE MODULE WITHOUT ENCLOSURE WITH DOUBLE POLE MICRO SWITCH		
21481	2	REMOTE MANUAL PULL STATION		

AMEREX FIRE SYSTEM
UL LISTED PER STD LATEST STD 300

- FINAL INSTALLATION IS TO BE MADE IN ACCORDANCE WITH ALL APPLICABLE CODES
- ALL ELECTRICAL COMPONENTS FOR EQUIPMENT SHUT DOWN TO BE PROVIDED BY THE ELECTRICIAN. MICRO-SWITCH INSTALLED IN REGULATED RELEASE BY AMEREX INSTALLER
- REMOTE PULL STATION LOCATED PER MECHANICAL DRAWINGS

MAIL APPROVED DRAWINGS TO APPROPRIATE FACTORY. BELOW WEBSITE: WWW.HALTONCOMPANY.COM

PROJECT: **CHICK-FLA**

LOCATION: **RICHMOND FSU**

DRAWN BY: _____ DATE: **04/25/2024**

SCALE: **NTS**

Halton
CARE FOR INDOOR AIR

SN# 05709

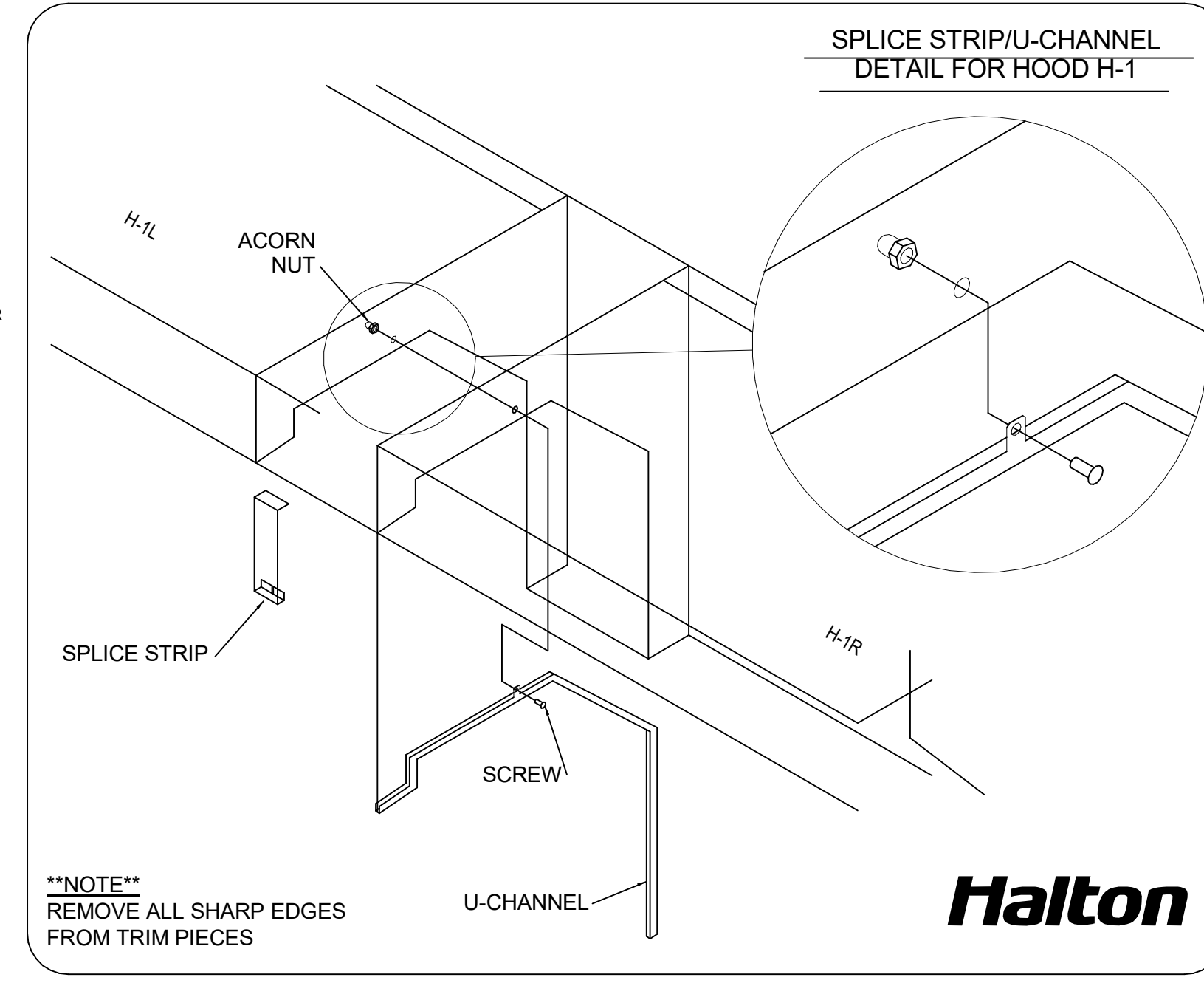
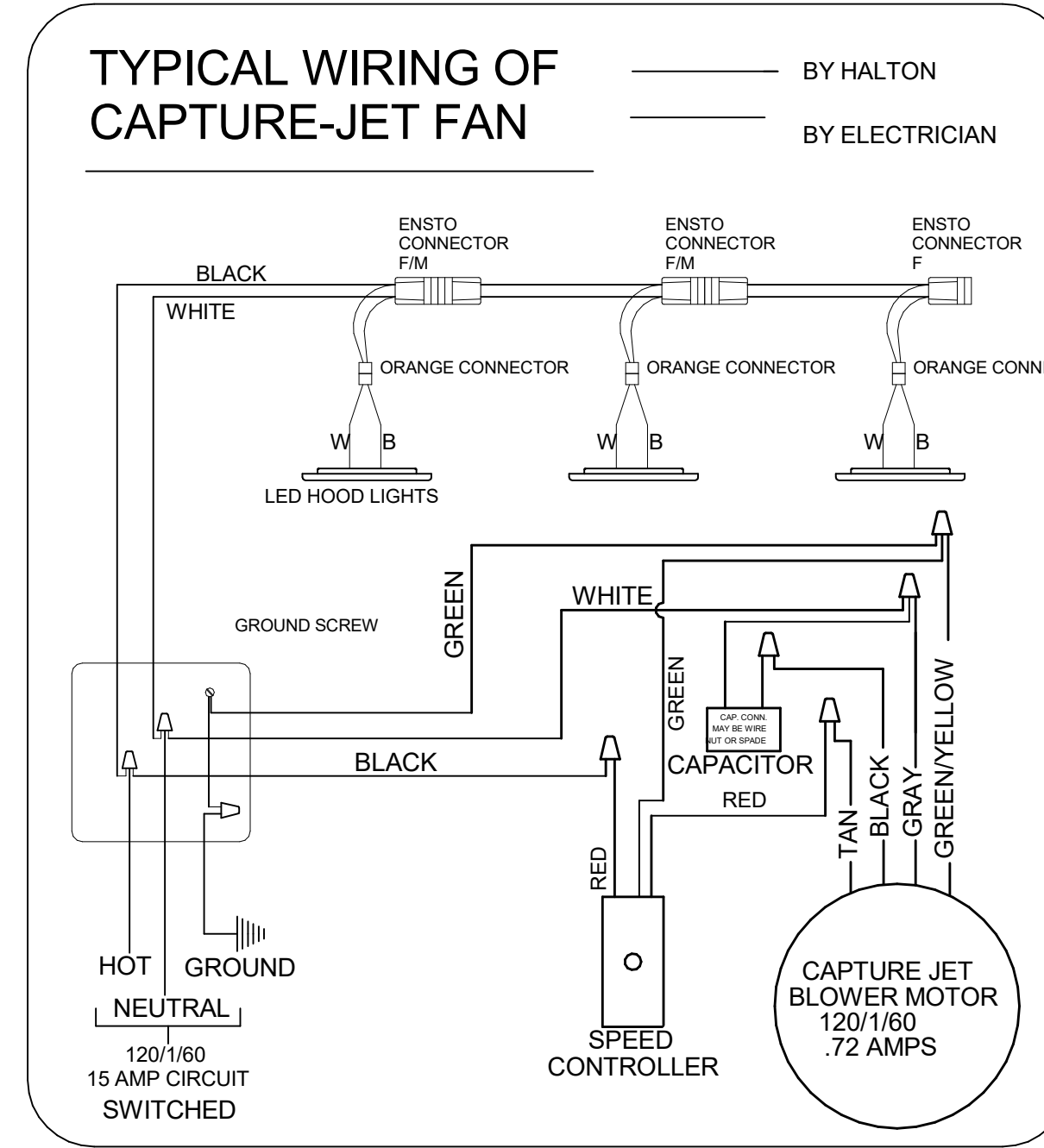
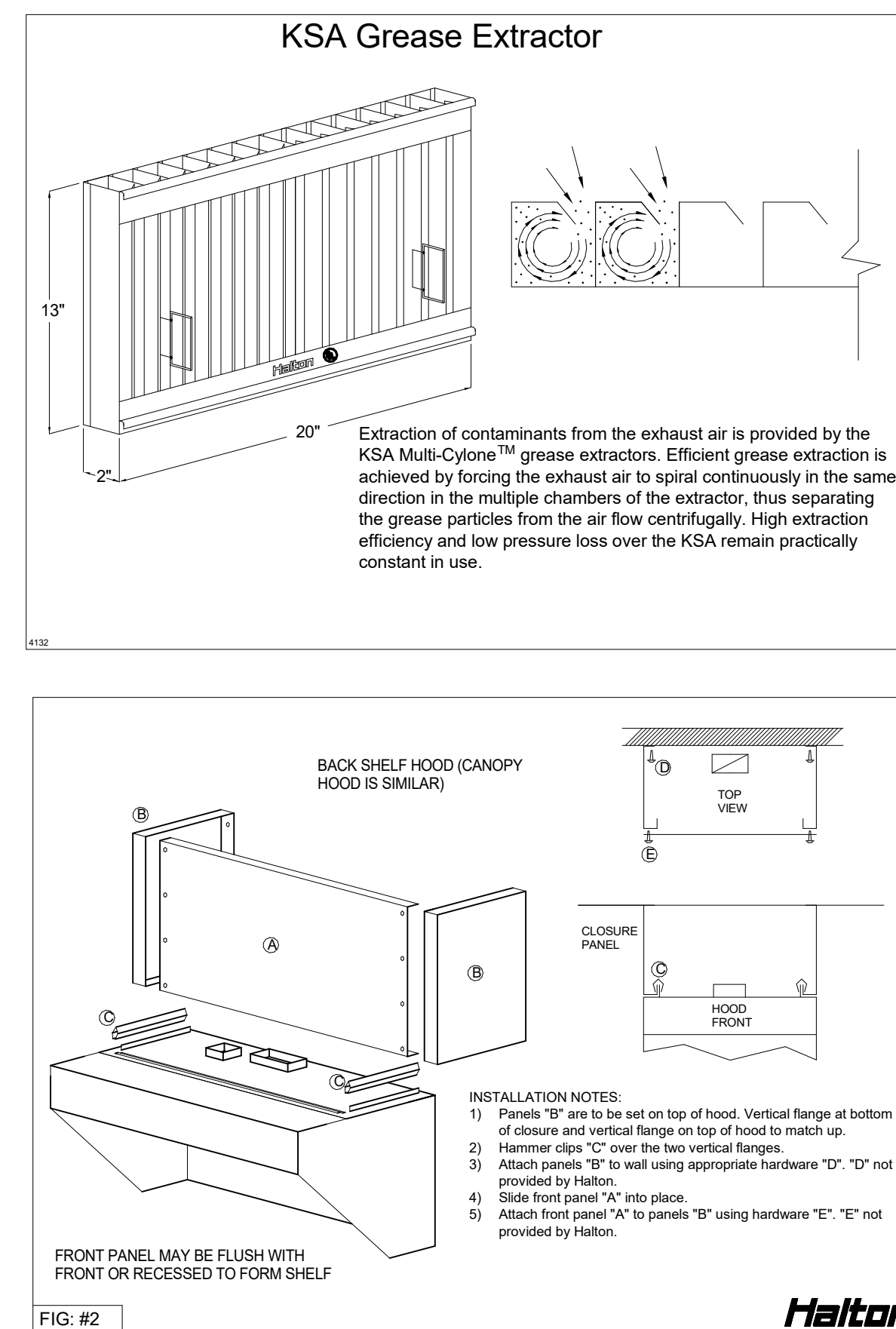
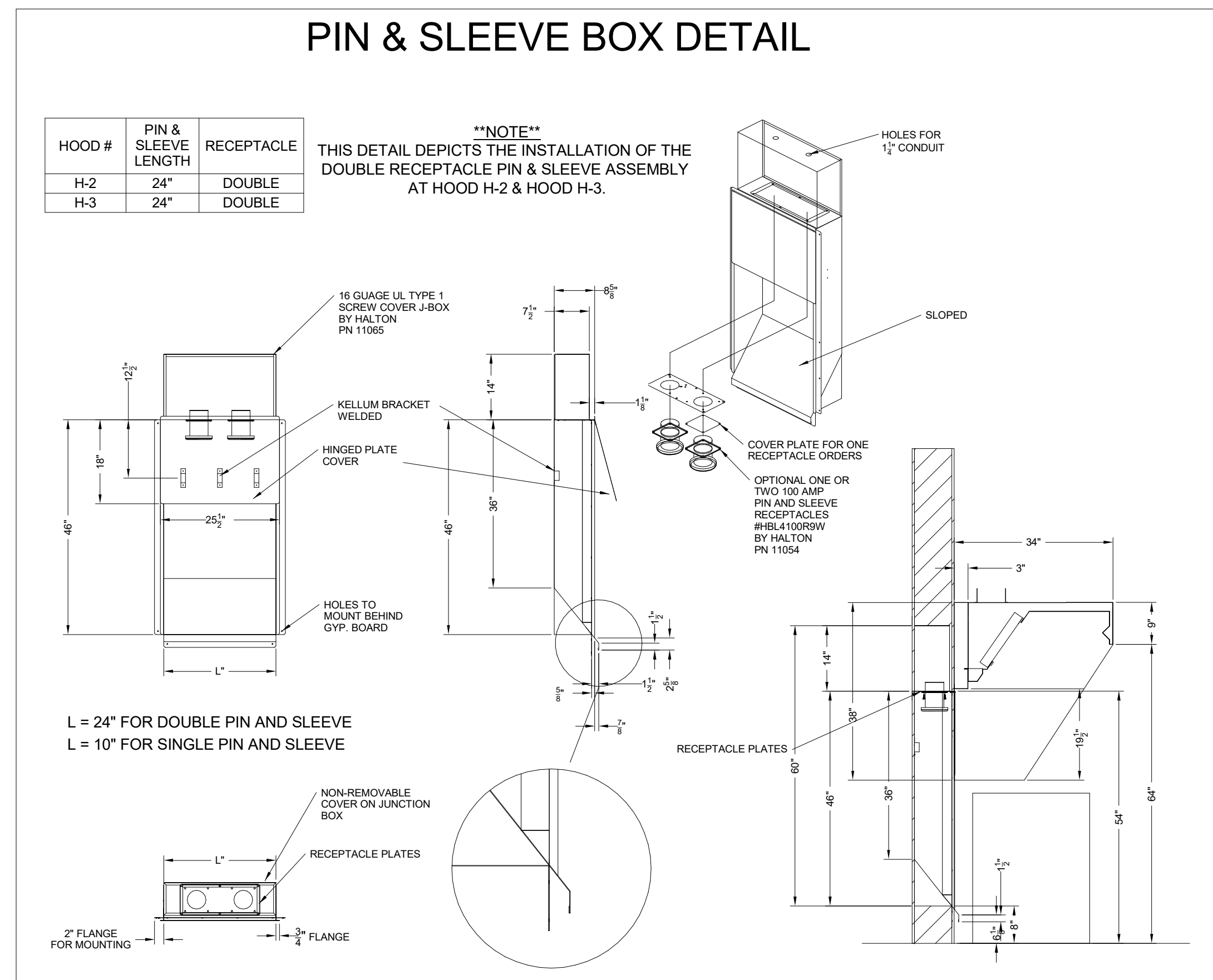
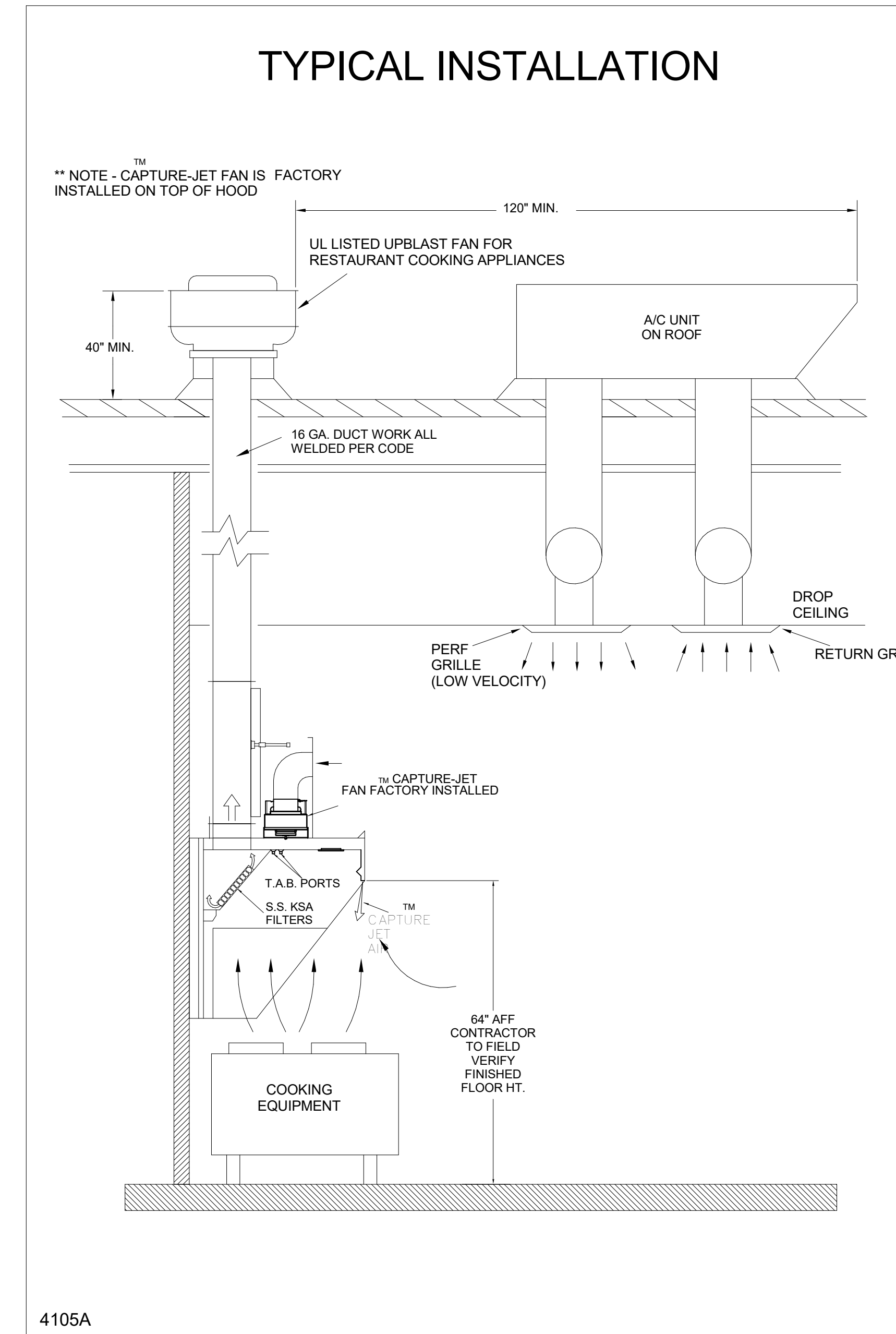
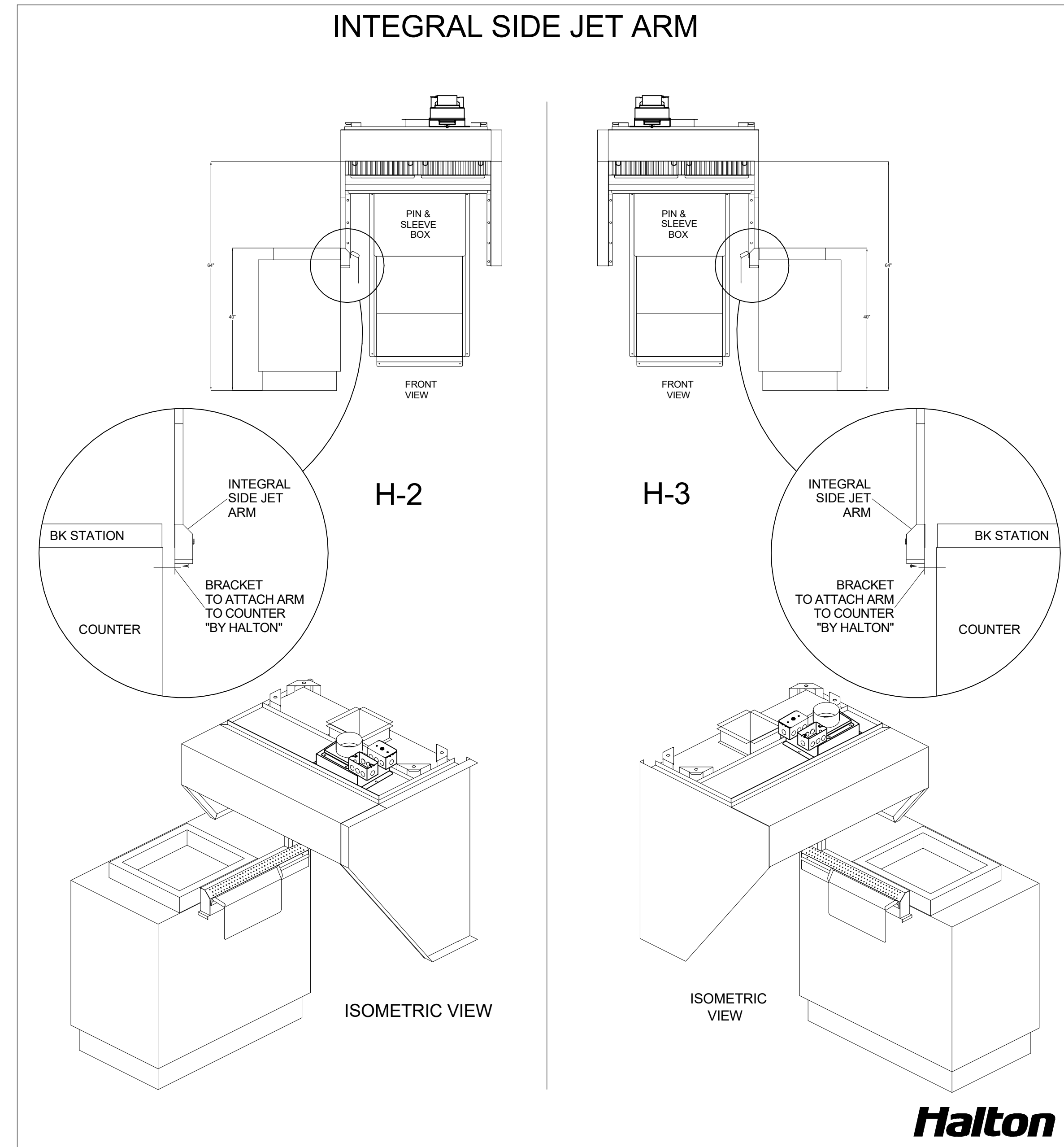
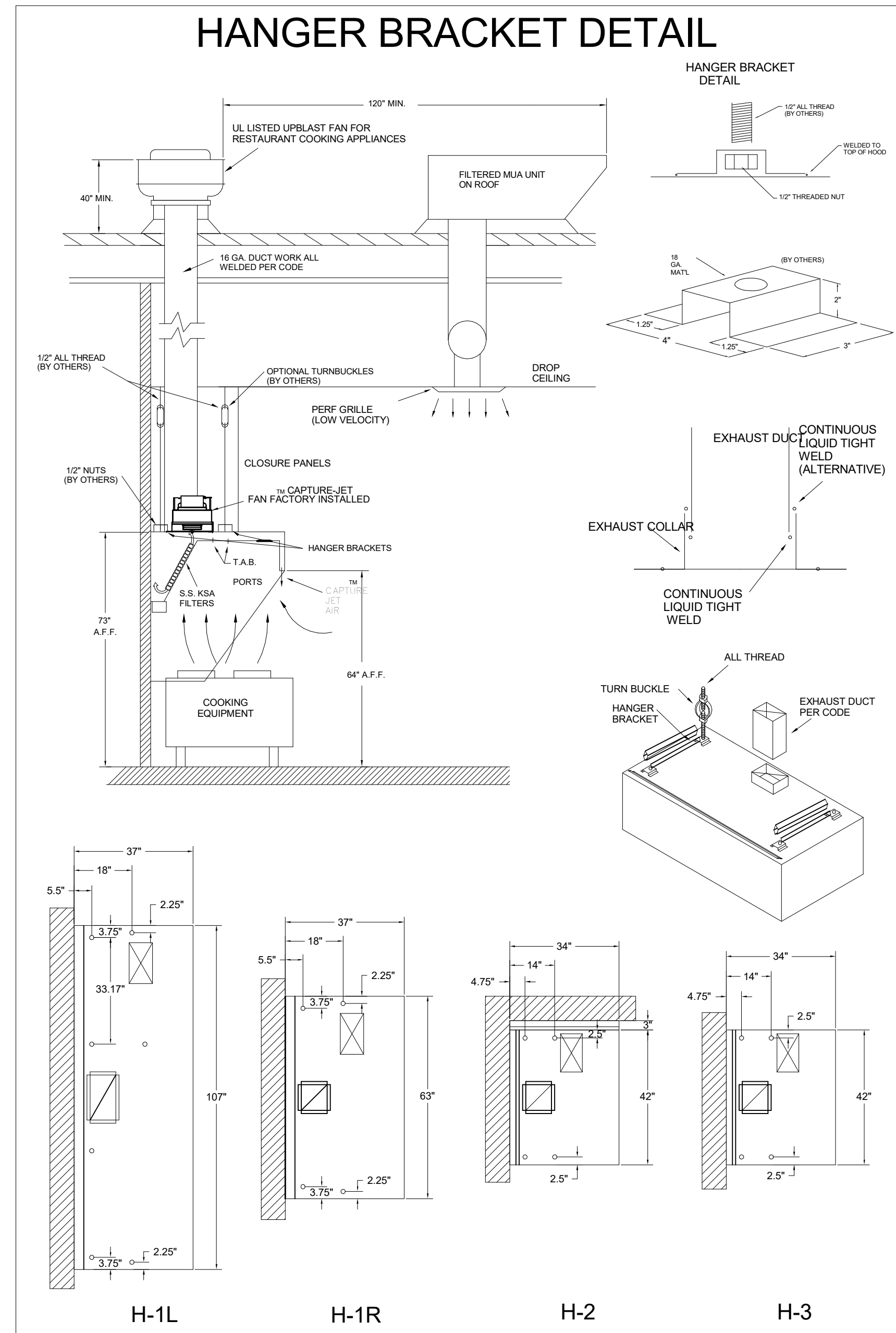
DATE: _____ BY: _____

REVISION: _____

REVISION DESCRIPTION: _____

1 2 3 4 5 6 7

Sheet **MH-1.3**



FOR REFERENCE ONLY

HALTON HOODS
 - ETL LISTED PER LATEST 710 STANDARD
 - BUILT PER NFPA 96
 - NSF LISTED

CONFORMS TO UL STD UL STD 710 CERTIFIED TO UL C STD 30486

HALTON COMPANY, 101 INDUSTRIAL DR., SCOTTSVILLE, KY 42164

MODEL NO. **KVL-C1C** SERIAL NO. _____ ITEM NO. _____

GENERAL REQUIREMENTS

HALTON HOODS ARE DESIGNED FOR COMMERCIAL AND INSTITUTIONAL KITCHENS. THE HOOD IS PROVIDED WITH REPLACEMENT KSA FILTERS AND LIGHTING FIXTURES. REPLACE FILTERS ONLY WITH EQUAL CLASSIFIED FILTER TYPE OF THE SAME MODEL AND MANUFACTURER.

DUTY LEVEL	MINIMUM OVERHANG	DISTANCE BETWEEN FRONT EDGE OF HOOD AND COOKING SURFACE, IN		MIN. EXHAUST CHUTE HOOD LENGTH
	FRONT IN	SIDE IN	MIN	MAX
MEDIUM	6	0	20	36
MEDIUM	6	0	20	32
MEDIUM	6	0	20	36
HEAVY	8	0	20	36
HEAVY	8	0	20	36

SETBACK UNDERHANG DISTANCE

JET SUPPLY AIR FLOW SHALL ONLY BE SET AT 0.30 IN HOOD

CONFORMS TO UL STD UL STD 710 CERTIFIED TO UL C STD 30486

HALTON COMPANY, 101 INDUSTRIAL DR., SCOTTSVILLE, KY 42164

MODEL NO. **KVL-21C** SERIAL NO. _____ ITEM NO. _____

GENERAL REQUIREMENTS

HALTON HOODS ARE DESIGNED FOR COMMERCIAL AND INSTITUTIONAL KITCHENS. THE HOOD IS PROVIDED WITH REPLACEMENT KSA FILTERS AND LIGHTING FIXTURES. REPLACE FILTERS ONLY WITH EQUAL CLASSIFIED FILTER TYPE OF THE SAME MODEL AND MANUFACTURER.

DUTY LEVEL	MINIMUM OVERHANG	DISTANCE BETWEEN FRONT EDGE OF HOOD AND COOKING SURFACE, IN		MIN. EXHAUST CHUTE HOOD LENGTH
	FRONT IN	SIDE IN	MIN	MAX
MEDIUM	6	0	20	36
MEDIUM	6	0	20	32
MEDIUM	6	0	20	36
HEAVY	8	0	20	36
HEAVY	8	0	20	36

SETBACK UNDERHANG DISTANCE

JET SUPPLY AIR FLOW SHALL ONLY BE SET AT 0.30 IN HOOD

PROJECT: **CHICK-FLA**

LOCATION: **RICHMOND FSU** DATE: **04/25/2024**

DRAWN BY: **NTS** SCALE: **NTS**

Sheet **MH-1.2**

MAIL APPROVED DRAWINGS TO APPROPRIATE FACTORY. BELOW WEBSITE: WWW.HALTONCOMPANY.COM

HALTON CO. (CANADA) 1021 BREVIK PLACE MISSISSAUGA, ON L4W 3R7 1-905-624-0301

HALTON CO. (USA) 101 INDUSTRIAL DRIVE SCOTTSVILLE, KY 42164 1-270-237-5600

REVISION DESCRIPTION

REV.	DATE	BY
1		
2		
3		
4		
5		
6		
7		

APPROVED BY: _____ WITH CHANGES AS NOTED

REVISION AND RESUBMIT

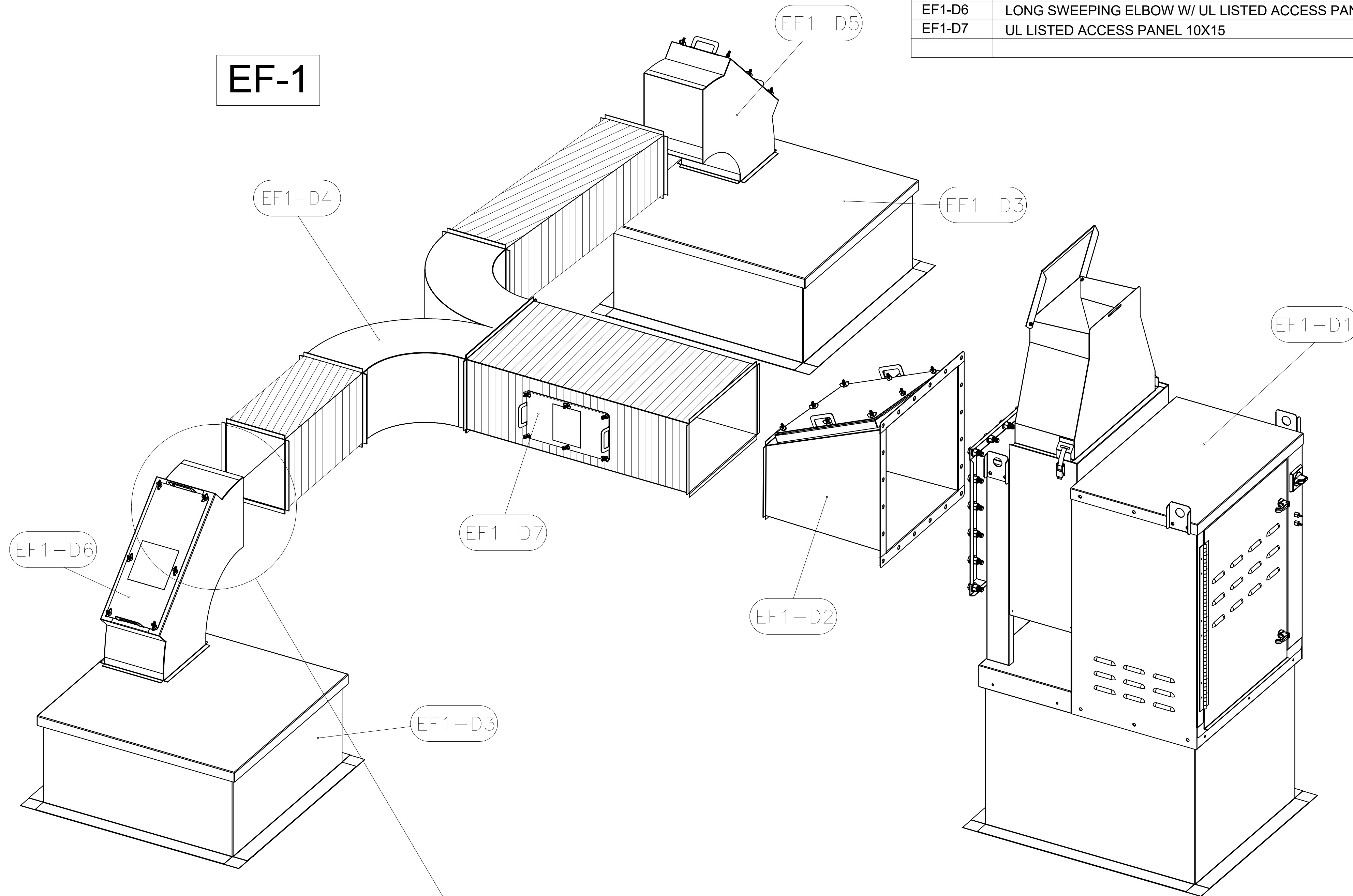
WITH NO CHANGES

APPROVED FOR FABRICATION

NSF, UL, ETL, NTS logos.

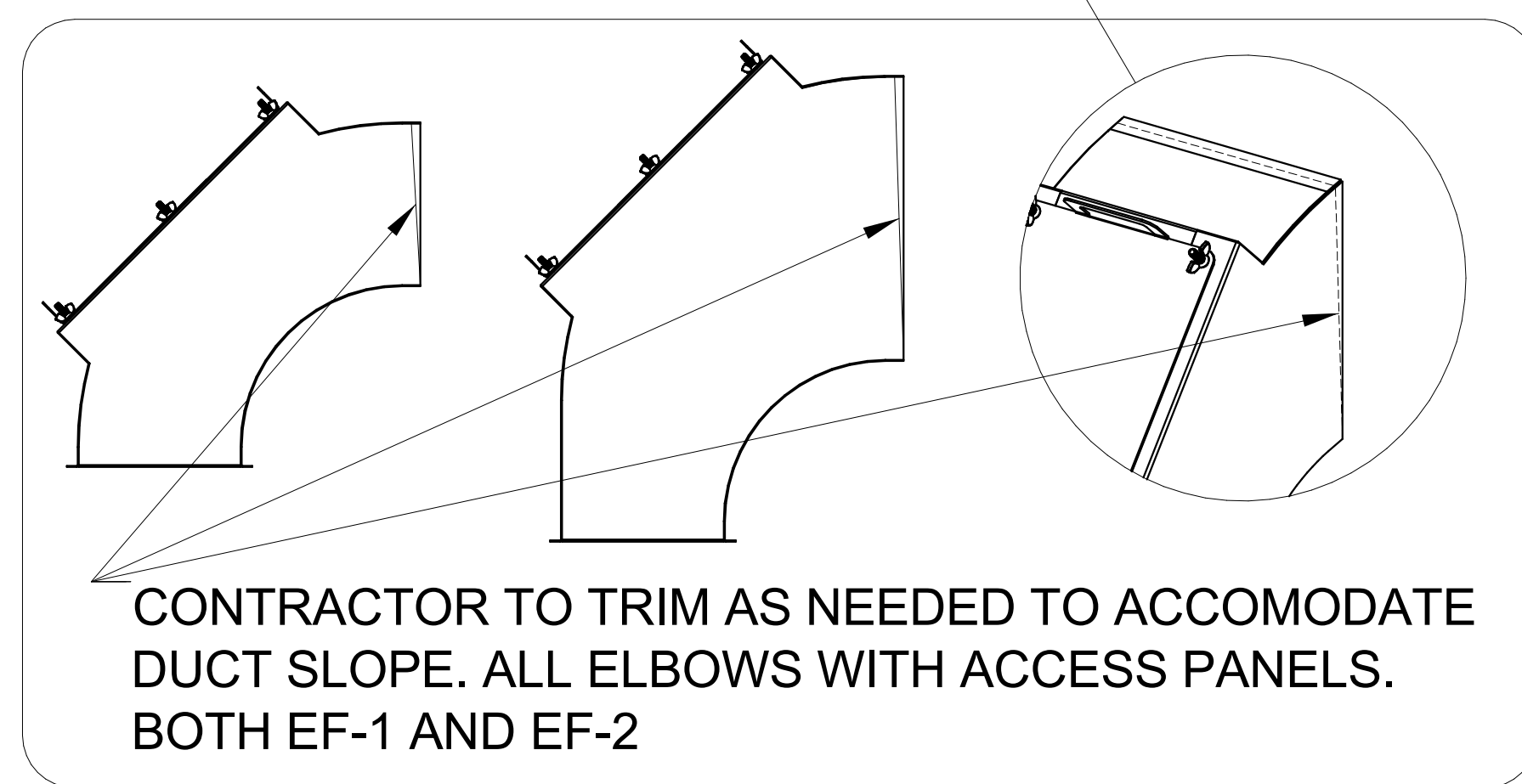
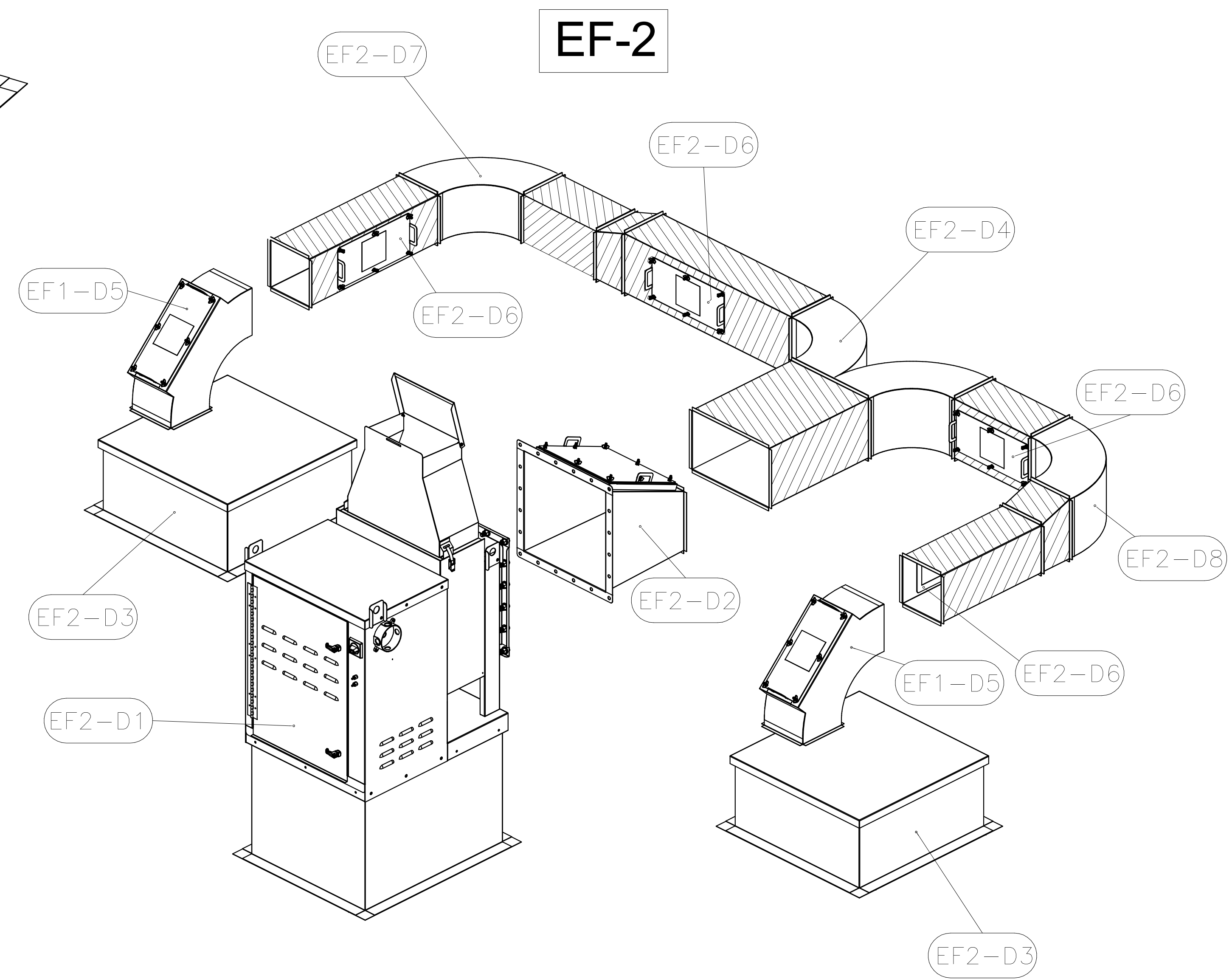
EXHAUST FAN #1 (EF-1)		
ITEM	DESCRIPTION	QTY
EF1-D1	KEFB EXHAUST FAN W/ ROOF CURB	1
EF1-D2	FAN TRANSITION W/ UL LISTED ACCESS PANEL 14X16	1
EF1-D3	DUCT ROOF CURB W/ CAP 26X26X12	2
EF1-D4	LONG SWEEPING WYVE 14X8	1
EF1-D5	LONG SWEEPING ELBOW TRANS W/ UL LISTED ACCESS PANEL 8X8 TO 8X14	1
EF1-D6	LONG SWEEPING ELBOW W/ UL LISTED ACCESS PANEL 14X8	1
EF1-D7	UL LISTED ACCESS PANEL 10X15	2

EXHAUST FAN #2 (EF-2)		
ITEM	DESCRIPTION	QTY
EF2-D1	KEFB EXHAUST FAN W/ ROOF CURB	1
EF2-D2	FAN TRANSITION W/ UL LISTED ACCESS PANEL 10X16	1
EF2-D3	DUCT ROOF CURB W/ CAP 26X26X12	2
EF2-D4	LONG SWEEPING WYVE 8X10	1
EF2-D5	LONG SWEEPING ELBOW W/ UL LISTED ACCESS PANEL 8X8	2
EF2-D6	UL LISTED ACCESS PANEL 7X15	4
EF2-D7	LONG SWEEPING ELBOW 8X8	1
EF2-D8	LONG SWEEPING ELBOW 8X10	1



-CONTACT HALTON CUSTOMER SERVICE FOR HALTON PROVIDED ITEMS ONLY DUCT SECTIONS SPECIFIED BY NUMBERS AND SHOWN IN THE ABOVE CHART ARE PROVIDED BY HALTON

-ALL OTHER DUCTS AND FITTINGS BY HVAC CONTRACTOR. DUCT SECTIONS PROVIDED BY HVAC CONTRACTOR ARE SHOWN IN ORDER TO DEPICT TOTAL SYSTEM DESIGN. DUCT SECTIONS SHOWN WITH UL LISTED ACCESS PANELS, THAT ARE NOT HALTON PROVIDED LONG SWEEPING ELBOWS OR FAN TRANSITIONS, ARE PROVIDED BY HVAC CONTRACTOR. THE UL LISTED ACCESS PANELS PROVIDED BY HALTON MUST BE INSTALLED IN DUCT SECTIONS NOT PROVIDED BY HALTON BY HVAC CONTRACTOR.



FOR REFERENCE ONLY

-ALL DUCTS AND FITTINGS DEPICTED BY HATCH AREAS ARE BY HVAC CONTRACTOR.

THE DRAWING MUST BE CHECKED, SIGNED AND RETURNED TO THE APPROPRIATE FACTORY. PLEASE VERIFYING THE FOLLOWING:
 1. ALL DIMENSIONAL INFORMATION, MOUNTING POSITIONS AND CLEARANCES.
 2. THE TYPE OF COILING EQUIPMENT.
 3. THE TYPE OF COILING EQUIPMENT, SUCH AS INCREASED ENERGY OR EQUIPMENT POSITION MAY AFFECT EXHAUST AIRFLOW. HALTON MUST BE NOTIFIED IF THESE CHANGES OCCUR, A RECALCULATION, EXHAUST AIRFLOW MAY BE REQUIRED.
 REVISE AND RESUBMIT
 APPROVED FOR FABRICATION
 WITH NO CHANGES
 WITH CHANGES AS NOTED
 APPROVED BY: _____ DATE: _____



MAIL APPROVED DRAWINGS TO APPROPRIATE FACTORY. BELOW WEBSITE: WWW.HALTONCOMPANY.COM	HALTON CO. (CANADA) 1021 BREVIK PLACE MISSISSAUGA, ON L4W 3R7 1-905-624-0201	HALTON CO. (USA) 101 INDUSTRIAL DRIVE SCOTTSDALE, AZ 85264 1-270-237-5600
REV. 1	REVISION DESCRIPTION	DATE
2		
3		
4		
5		
6		
7		

PROJECT: **CHICK-FL-A**
 LOCATION: **RICHMOND FSU**
 DRAWN BY: **NTS** DATE: **04/25/2024** SN#: **05709**
 SCALE: **NTS**
 Halton Dwg:
Halton
 CARE FOR INDOOR AIR