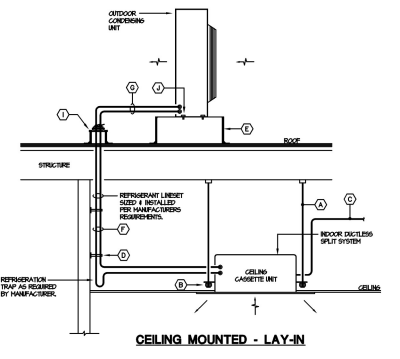


CODED NOTES

- ① SUPPLY UNIT FROM STRUCTURE WITH THROUGH ROD SUPPORTS - TYPICAL.
- ② NEURFINE ISOLATORS - TYPICAL.
- ③ IF RIBBED CONCRETE BRAN - REFER TO PLANS FOR TERMINATION LOCATION.
- ④ SUPPORT IS 4 IN. PIPING FROM WALL WITH UNDERST SUPPORTS - TYPICAL.
- ⑤ 2" X 4" HORIZONTAL SAIL - PANE OR ISAIL.
- ⑥ ALL PIPING SECTION FINISH SHALL BE INSTALLED AS INDICATED IN SPECIFICATIONS.
- ⑦ ALL EXTERIOR PIPING SECTION FINISH SHALL BE INSTALLED AS INDICATED IN SPECIFICATIONS WITH STAINLESS STEEL OR ALUMINUM BRACKETED EXTERIOR JOINTS.
- ⑧ ORIENTATION OF CONDENSING UNIT ON ROOF SHALL BE SUCH THAT THE CONDENSER WILL DISCHARGE AIR IN THE DIRECTION OF THE PREVAILING WINDS.
- ⑨ PANE PIPE GRID OR ISAIL.
- ⑩ SECURE CONDENSING UNIT SUPPORT RAIL PER MANUFACTURER'S RECOMMENDATIONS.
- ⑪ REFER TO PLANS FOR HOISTING HEIGHT - CONFORM ELEVATION IN FIELD FROM TO ANY WINDS.
- ⑫ SUPPORT UNIT FROM WALL WITH WALL-HORIZING BRACKETS.
- ⑬ SUPPORT UNIT FROM VESTIBULE CEILING FINISH.

GENERAL NOTES

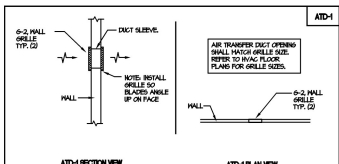
- A. RETROFITTING PIPING BETWEEN CONDENSING UNIT AND DX COIL. PIPING SHALL BE REPRESENTED GRADE OR INDICATED IN SPECIFICATIONS WITH MANUFACTURER'S PIPING DIMENSIONS AND RECOMMENDATIONS.
- B. ISOLATE PIPING FROM STRUCTURE WITH ONE-HALF (1/2) INCH INSULATION BETWEEN ALL PIPING AND SUPPORT POINTS OR HORIZONTAL CLAMPS WITH RESERVE ISOLATORS.
- C. AFTER COMPLETION PRESURE TEST PIPING RIGID AND EVACUATE SYSTEM THREE AND CHARGE SYSTEM WITH RETROFITTING AND OIL.
- D. ISOLATE ALL RETROFITTING SECTION PIPING FROM CONDENSING UNIT TO BLOCK ON COIL WITH APPROXIMATELY CLOSED CELL FIBER INSULATION. ALL EXTERIOR EXPOSED INSULATION SHALL BE INSTALLED WITH EMBROIDERED STAINLESS STEEL OR ALUMINUM JOINTS.
- E. ISOLATE CONDENSATE PIPING WITHIN THE BUILDING WITH INSULATED THERMO AND FIBER INSULATION WITH FULL JACKET AND VAPOR BARRIER. INSULATION THICKNESS SHALL BE 1/2".
- F. CONDENSATE TRAP: INSTALL DRAIN PAN OVERLAP SWITCH.



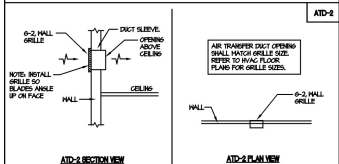
1 DUCTLESS SPLIT SYSTEM DETAIL
SCALE: NONE

HEATING - VENTILATING - AIR CONDITIONING			
SYMBOL	DESCRIPTION	SYMBOL	DESCRIPTION
1	1/2" RIGID INSULATION	1	ACTUATOR CONTROL VALVE
2	1/2" RIGID INSULATION	2	ACTUATOR CONTROL VALVE (FROST)
3	1/2" RIGID INSULATION	3	ACTUATOR CONTROL VALVE (FROST)
4	1/2" RIGID INSULATION	4	ACTUATOR CONTROL VALVE (FROST)
5	1/2" RIGID INSULATION	5	ACTUATOR CONTROL VALVE (FROST)
6	1/2" RIGID INSULATION	6	ACTUATOR CONTROL VALVE (FROST)
7	1/2" RIGID INSULATION	7	ACTUATOR CONTROL VALVE (FROST)
8	1/2" RIGID INSULATION	8	ACTUATOR CONTROL VALVE (FROST)
9	1/2" RIGID INSULATION	9	ACTUATOR CONTROL VALVE (FROST)
10	1/2" RIGID INSULATION	10	ACTUATOR CONTROL VALVE (FROST)
11	1/2" RIGID INSULATION	11	ACTUATOR CONTROL VALVE (FROST)
12	1/2" RIGID INSULATION	12	ACTUATOR CONTROL VALVE (FROST)
13	1/2" RIGID INSULATION	13	ACTUATOR CONTROL VALVE (FROST)
14	1/2" RIGID INSULATION	14	ACTUATOR CONTROL VALVE (FROST)
15	1/2" RIGID INSULATION	15	ACTUATOR CONTROL VALVE (FROST)
16	1/2" RIGID INSULATION	16	ACTUATOR CONTROL VALVE (FROST)
17	1/2" RIGID INSULATION	17	ACTUATOR CONTROL VALVE (FROST)
18	1/2" RIGID INSULATION	18	ACTUATOR CONTROL VALVE (FROST)
19	1/2" RIGID INSULATION	19	ACTUATOR CONTROL VALVE (FROST)
20	1/2" RIGID INSULATION	20	ACTUATOR CONTROL VALVE (FROST)
21	1/2" RIGID INSULATION	21	ACTUATOR CONTROL VALVE (FROST)
22	1/2" RIGID INSULATION	22	ACTUATOR CONTROL VALVE (FROST)
23	1/2" RIGID INSULATION	23	ACTUATOR CONTROL VALVE (FROST)
24	1/2" RIGID INSULATION	24	ACTUATOR CONTROL VALVE (FROST)
25	1/2" RIGID INSULATION	25	ACTUATOR CONTROL VALVE (FROST)
26	1/2" RIGID INSULATION	26	ACTUATOR CONTROL VALVE (FROST)
27	1/2" RIGID INSULATION	27	ACTUATOR CONTROL VALVE (FROST)
28	1/2" RIGID INSULATION	28	ACTUATOR CONTROL VALVE (FROST)
29	1/2" RIGID INSULATION	29	ACTUATOR CONTROL VALVE (FROST)
30	1/2" RIGID INSULATION	30	ACTUATOR CONTROL VALVE (FROST)
31	1/2" RIGID INSULATION	31	ACTUATOR CONTROL VALVE (FROST)
32	1/2" RIGID INSULATION	32	ACTUATOR CONTROL VALVE (FROST)
33	1/2" RIGID INSULATION	33	ACTUATOR CONTROL VALVE (FROST)
34	1/2" RIGID INSULATION	34	ACTUATOR CONTROL VALVE (FROST)
35	1/2" RIGID INSULATION	35	ACTUATOR CONTROL VALVE (FROST)
36	1/2" RIGID INSULATION	36	ACTUATOR CONTROL VALVE (FROST)
37	1/2" RIGID INSULATION	37	ACTUATOR CONTROL VALVE (FROST)
38	1/2" RIGID INSULATION	38	ACTUATOR CONTROL VALVE (FROST)
39	1/2" RIGID INSULATION	39	ACTUATOR CONTROL VALVE (FROST)
40	1/2" RIGID INSULATION	40	ACTUATOR CONTROL VALVE (FROST)
41	1/2" RIGID INSULATION	41	ACTUATOR CONTROL VALVE (FROST)
42	1/2" RIGID INSULATION	42	ACTUATOR CONTROL VALVE (FROST)
43	1/2" RIGID INSULATION	43	ACTUATOR CONTROL VALVE (FROST)
44	1/2" RIGID INSULATION	44	ACTUATOR CONTROL VALVE (FROST)
45	1/2" RIGID INSULATION	45	ACTUATOR CONTROL VALVE (FROST)
46	1/2" RIGID INSULATION	46	ACTUATOR CONTROL VALVE (FROST)
47	1/2" RIGID INSULATION	47	ACTUATOR CONTROL VALVE (FROST)
48	1/2" RIGID INSULATION	48	ACTUATOR CONTROL VALVE (FROST)
49	1/2" RIGID INSULATION	49	ACTUATOR CONTROL VALVE (FROST)
50	1/2" RIGID INSULATION	50	ACTUATOR CONTROL VALVE (FROST)
51	1/2" RIGID INSULATION	51	ACTUATOR CONTROL VALVE (FROST)
52	1/2" RIGID INSULATION	52	ACTUATOR CONTROL VALVE (FROST)
53	1/2" RIGID INSULATION	53	ACTUATOR CONTROL VALVE (FROST)
54	1/2" RIGID INSULATION	54	ACTUATOR CONTROL VALVE (FROST)
55	1/2" RIGID INSULATION	55	ACTUATOR CONTROL VALVE (FROST)
56	1/2" RIGID INSULATION	56	ACTUATOR CONTROL VALVE (FROST)
57	1/2" RIGID INSULATION	57	ACTUATOR CONTROL VALVE (FROST)
58	1/2" RIGID INSULATION	58	ACTUATOR CONTROL VALVE (FROST)
59	1/2" RIGID INSULATION	59	ACTUATOR CONTROL VALVE (FROST)
60	1/2" RIGID INSULATION	60	ACTUATOR CONTROL VALVE (FROST)
61	1/2" RIGID INSULATION	61	ACTUATOR CONTROL VALVE (FROST)
62	1/2" RIGID INSULATION	62	ACTUATOR CONTROL VALVE (FROST)
63	1/2" RIGID INSULATION	63	ACTUATOR CONTROL VALVE (FROST)
64	1/2" RIGID INSULATION	64	ACTUATOR CONTROL VALVE (FROST)
65	1/2" RIGID INSULATION	65	ACTUATOR CONTROL VALVE (FROST)
66	1/2" RIGID INSULATION	66	ACTUATOR CONTROL VALVE (FROST)
67	1/2" RIGID INSULATION	67	ACTUATOR CONTROL VALVE (FROST)
68	1/2" RIGID INSULATION	68	ACTUATOR CONTROL VALVE (FROST)
69	1/2" RIGID INSULATION	69	ACTUATOR CONTROL VALVE (FROST)
70	1/2" RIGID INSULATION	70	ACTUATOR CONTROL VALVE (FROST)
71	1/2" RIGID INSULATION	71	ACTUATOR CONTROL VALVE (FROST)
72	1/2" RIGID INSULATION	72	ACTUATOR CONTROL VALVE (FROST)
73	1/2" RIGID INSULATION	73	ACTUATOR CONTROL VALVE (FROST)
74	1/2" RIGID INSULATION	74	ACTUATOR CONTROL VALVE (FROST)
75	1/2" RIGID INSULATION	75	ACTUATOR CONTROL VALVE (FROST)
76	1/2" RIGID INSULATION	76	ACTUATOR CONTROL VALVE (FROST)
77	1/2" RIGID INSULATION	77	ACTUATOR CONTROL VALVE (FROST)
78	1/2" RIGID INSULATION	78	ACTUATOR CONTROL VALVE (FROST)
79	1/2" RIGID INSULATION	79	ACTUATOR CONTROL VALVE (FROST)
80	1/2" RIGID INSULATION	80	ACTUATOR CONTROL VALVE (FROST)
81	1/2" RIGID INSULATION	81	ACTUATOR CONTROL VALVE (FROST)
82	1/2" RIGID INSULATION	82	ACTUATOR CONTROL VALVE (FROST)
83	1/2" RIGID INSULATION	83	ACTUATOR CONTROL VALVE (FROST)
84	1/2" RIGID INSULATION	84	ACTUATOR CONTROL VALVE (FROST)
85	1/2" RIGID INSULATION	85	ACTUATOR CONTROL VALVE (FROST)
86	1/2" RIGID INSULATION	86	ACTUATOR CONTROL VALVE (FROST)
87	1/2" RIGID INSULATION	87	ACTUATOR CONTROL VALVE (FROST)
88	1/2" RIGID INSULATION	88	ACTUATOR CONTROL VALVE (FROST)
89	1/2" RIGID INSULATION	89	ACTUATOR CONTROL VALVE (FROST)
90	1/2" RIGID INSULATION	90	ACTUATOR CONTROL VALVE (FROST)
91	1/2" RIGID INSULATION	91	ACTUATOR CONTROL VALVE (FROST)
92	1/2" RIGID INSULATION	92	ACTUATOR CONTROL VALVE (FROST)
93	1/2" RIGID INSULATION	93	ACTUATOR CONTROL VALVE (FROST)
94	1/2" RIGID INSULATION	94	ACTUATOR CONTROL VALVE (FROST)
95	1/2" RIGID INSULATION	95	ACTUATOR CONTROL VALVE (FROST)
96	1/2" RIGID INSULATION	96	ACTUATOR CONTROL VALVE (FROST)
97	1/2" RIGID INSULATION	97	ACTUATOR CONTROL VALVE (FROST)
98	1/2" RIGID INSULATION	98	ACTUATOR CONTROL VALVE (FROST)
99	1/2" RIGID INSULATION	99	ACTUATOR CONTROL VALVE (FROST)
100	1/2" RIGID INSULATION	100	ACTUATOR CONTROL VALVE (FROST)

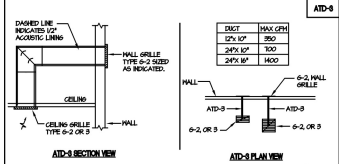
2 H.V.A.C. LEGEND
SCALE: NONE



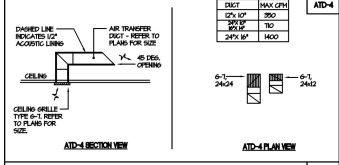
ATD-1 SECTION VIEW
ATD-1 PLAN VIEW



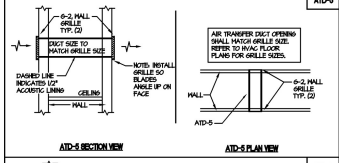
ATD-2 SECTION VIEW
ATD-2 PLAN VIEW



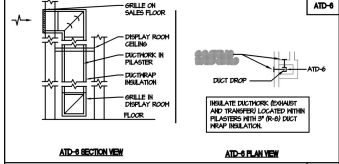
ATD-3 SECTION VIEW
ATD-3 PLAN VIEW



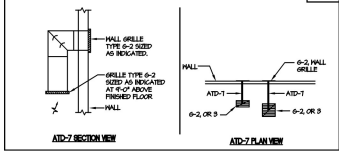
ATD-4 SECTION VIEW
ATD-4 PLAN VIEW



ATD-5 SECTION VIEW
ATD-5 PLAN VIEW



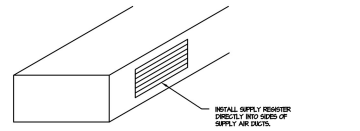
ATD-6 SECTION VIEW
ATD-6 PLAN VIEW



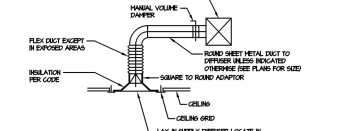
ATD-7 SECTION VIEW
ATD-7 PLAN VIEW

- NOTES FOR ALL AIR TRANSFER DUCTS:**
- A. REAL VOID BETWEEN WALL AND ALL DUCT PENETRATIONS AIRTIGHT.
 - B. FLOOR JOINT AND TRANSFER DUCT WITH TOP OF ACROUSTIC LINING.
 - C. DUCT DIMENSIONS ARE EXTERIOR AND INCLUDE LINING.
 - D. ALL GRILLES SHALL BE EMBROIDERED WITH FINISH CAPABLE WITH WALL OR CEILING CONSTRUCTION.
 - E. REFER TO MECHANICAL FLOOR PLANS FOR HOISTING HEIGHTS OF ALL WALL MOUNTED GRILLES.
 - F. REFER TO MECHANICAL FLOOR PLANS FOR HOISTING HEIGHTS OF ALL WALL MOUNTED GRILLES.
 - G. ALL GRILLES ON SALES FLOOR SHALL BE INSTALLED ABOVE FINISH PAINT BREAK LINE UNLESS INDICATED OTHERWISE ON FLOOR PLAN.

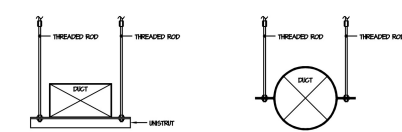
3 AIR TRANSFER DUCT DETAILS
SCALE: NONE



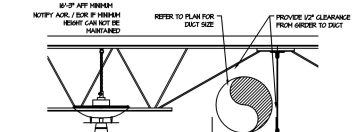
4 SIDEWALL SUPPLY REGISTER INSTALLATION DETAIL
SCALE: NONE



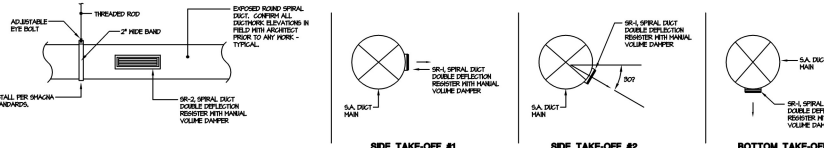
5 LAY-IN CEILING DIFFUSER DETAIL
SCALE: NONE



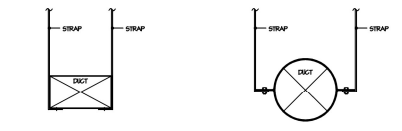
6 SALES FLOOR EXPOSED DUCT SUPPORT DETAILS
SCALE: NONE



7 DUCT INSTALLATION DETAIL
SCALE: NONE



8 SIDEWALL SUPPLY REGISTER INSTALLATION DETAIL - SPIRAL DUCTWORK
SCALE: NONE



9 STOCKROOM EXPOSED DUCT SUPPORT DETAILS
SCALE: NONE

- NOTES:**
- 1. STRAPS SHALL BE RIGIDLY SUPPORTED FROM ROOF/FLOOR STRUCTURE ABOVE. REFER TO STRUCTURAL DRAWINGS FOR ADDITIONAL INFORMATION.
 - 2. CLAMPS, STRAPS, BOLDS AND BOLTS SHALL BE SIZED FOR LOAD.
 - 3. DUCTWORK SHALL BE INSTALLED IN ACCORDANCE WITH APPROVED AND LATEST SHAWMA STANDARDS.

Bergmeyer
COL. 874 N. High St.
LA 801 South Figueroa St.
BIRMINGHAM, AL 35203
11. Birmingham, AL 35203
817.242.1555
www.bergmeyer.com

DICK'S SPORTING GOODS

DICK'S HOUSE OF SPORT
DSG HOS BRANDON TOWN CENTER
686 BRANDON TOWN CENTER DRIVE
BRANDON, FL 33511

CONSTRUCTION DOCUMENTS
NO. 01 OF 02
DATE: 08/02/24
DESCRIPTION: H2.3
HVAC DETAILS

DRAWN BY: PMP
REVIEWED BY: GRS
JOB NO.: 23227777
H2.3

