

CheckList List

- Walgreens Survey-RTU #5
- Walgreens Survey-RTU #6

Comment:



08/15/2024

Right side of cabinet.

Comment:



08/15/2024

Front side of cabinet.

Comment:



08/15/2024

Back side of cabinet.

Comment:



08/15/2024

Inside of electrical cabinet.

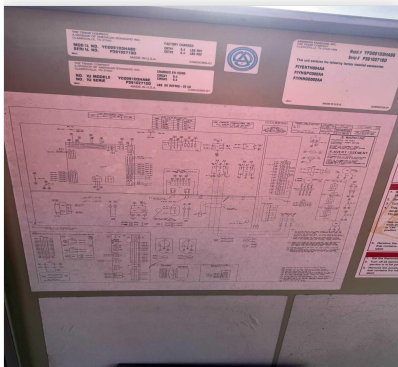
Comment:



08/15/2024

Electrical schematic.

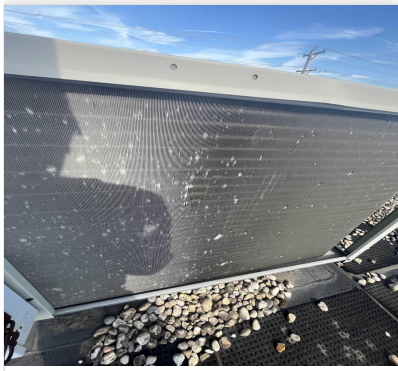
Comment:



08/15/2024

Close up picture of condensing coil.

Comment:



08/15/2024

Blower compartment.

Comment:



08/15/2024

Mixed air compartment.

Comment:



08/15/2024

Close up of evaporative coil.

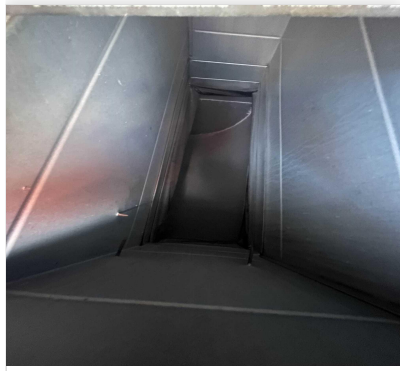
Comment:



08/15/2024

Return drop looking down from unit if possible.

Comment:



08/15/2024

Supply drop looking down from unit if possible.

Comment:

List any visual damage and take additional pictures if needed.

Comment:



08-12-24 WALGREENS #5460 PONTIAC, IL

CheckList Information

Name : Walgreens Survey-RTU #6 **Status :** Not Completed

Assigned Organization : National TAB **Asset :**

Requesting Organization : National TAB

Created Date : 08/14/2024 - Megan McKelvey - National TAB

CheckList Item Details

List unit label or tag nomenclature (if exists).

Comment:

Close up picture of unit tag.

Comment:



08/15/2024

List model serial number & manufacturer.

Comment:

Model YCD037C3HABE SERIAL P39102610D

Left side of cabinet.

Comment:



08/15/2024

Right side of cabinet.

Comment:



08/15/2024

Front side of cabinet.

Comment:



08/15/2024

Back side of cabinet.

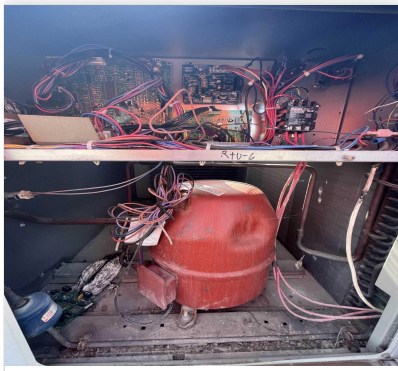
Comment:



08/15/2024

Inside of electrical cabinet.

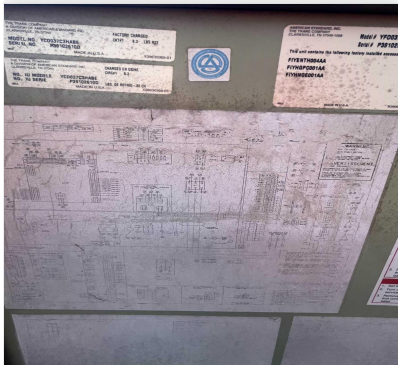
Comment:



08/15/2024

Electrical schematic.

Comment:



08/15/2024

Close up picture of condensing coil.

Comment:

Blower compartment.

Comment:



08/15/2024

Mixed air compartment.

Comment:



08/15/2024

Close up of evaporative coil.

Comment:



08/15/2024

Return drop looking down from unit if possible.

Comment:



08/15/2024

Supply drop looking down from unit if possible.

Comment:

List any visual damage and take additional pictures if needed.

Comment:
