



# National TAB

Project: Warabeya North America (Columbus, OH)  
Function: Test, Adjust, & Balance

## Project Summary

Below & attached are our findings & discussion after our site visit on 9/10. We met with Mullins at end of day & it was decided to have a meeting on Friday 10am with multiple team members to get resolution on several items to allow progress for job & TAB work. Below are dates of TAB for most systems. Several dates are not provided until Friday meeting & understanding of site readiness

The Chilled Water system VFD & Chiller startups are now fully complete & Prime has full control of the systems. We can not plan on do a thorough testing of all pumps that are operating & start balancing the Unit Cooler (29 degree) loop. It will be required that starting this weekend the UC loop water temp raised high enough to make sure all rooms maintain 55 degree or warmer temp in space to make sure all independent controls valves open up 100%. Prime will have to manually open several control valves on Monday morning as soon as they get on site to fully open the system up. The P23 back up pump work is still not complete & we will have to look at this pump at a later date but will be difficult to TAB a full load later & mayb only be able to provide partial load TAB results. the PC (Process Chillers) pumps have not been started up & was told Prime does not get involved with these pumps. We will need who ever is responsible to provide details for this system.

The hood system with associated exhaust fans, & MUA3 control wiring started this week. However there are questions concerning final control wiring, ansul wiring, MUA interlock, Speed adjustment of Hood exhaust fans, and MUA3 Motorized duct dampers (3 zones) wiring & control of dampers. This will be a main topic on Fridays meeting. Gaylord representative will be in meeting also.

MUA4 & MUA5 Motorized damper wiring and control operation is not understood by the mechanical team. This will also be discussed on Friday

THE AHU1/ERU Final setup & finish balancing will be completed Wed & Thursday next week. Mullins is verifying TRANE can be on site 9/17 at 9 am to assist Prime & NTAB to complete the setup.

Building overall pressure testing will have to be scheduled at a later date pending how TAB is progressing. Keep in mind only partial pressure testing can be achieved due to none of the owner supplied tunnel washers will be installed. The cooking equipment that is installed under the hoods that is owner supplied will also not be on site for quite some time.

- CW System with 29 degree loop 9/15 to 9/22
- MUA2 9/16-9/17
- MUA1 9/18-9/22
- MUA4 9/23-9/24 (MC will have to manually have motorized duct dampers open to allow TAB of MUA & diffusers - Future sequence testing will have to be scheduled)
- MUA5 9/25-9/30 (MC will have to manually have motorized duct dampers open in different sequences to allow TAB of MUA & diffusers - Future sequence testing will have to be scheduled)
- MUA3 (TBD)
- HOOD EXHAUST SYSTEMS (TBD)
- GENERAL EXHAUST FANS 9/30-10/9 - Fans not fully under control. However, electrician can power on & we can manually set TAB fan speed manually on VFD until controls are ready

Mullins stated they can provide lift & any manual assistance needed to keep things moving forward. We will need to have (1) one man lift on 9/15 & then another one man lift on 9/16. We will need both lifts full time until complete. We will need to have board for the floors put down.

## Task List

- 29 degree loop balancing
- ERU-AHU final setup
- Gaylord hood panels
- Hood AVHC
- MUA's operation
- Power to hood fans on roof
- Wash exhaust Power



## Warabeya North America (Columbus, OH)

### Project Task Information

**Task Name :** 29 degree loop balancing

**Description :** To balance the UC's we will need to change cw setpoint to allow standalone controls to open 100%

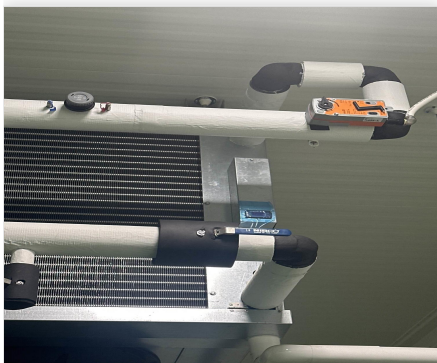
**Created By :** National TAB

**Assigned To :** National TAB - Stephan Gabbert

**Status :** Open

**Originated Date :** 09/10/2025 - Joe Hertenstein - National TAB

#### Project Task File Details



09/10/2025

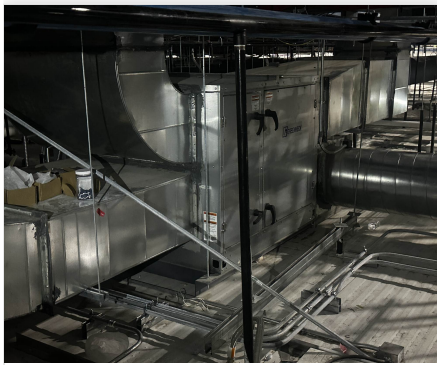


## Warabeya North America (Columbus, OH)

### Project Task Information

**Task Name :** ERU-AHU final setup  
**Description :** To do final setup of AHU/ERU WILL need both units operating & under control. Also need to be able to adjust setpoints on AHU- No remote trane controller. Does Prime have full control of units?  
**Created By :** National TAB      **Assigned To :** National TAB - Stephan Gabbert  
**Status :** Open  
**Originated Date :** 09/10/2025 - Joe Hertenstein - National TAB

#### Project Task File Details



09/10/2025



09/10/2025



## Warabeya North America (Columbus, OH)

### Project Task Information

**Task Name :** Gaylord hood panels  
**Description :** Need wiring complete per gaylord dwgs  
**Created By :** National TAB **Assigned To :** National TAB - Jordan Best  
**Status :** Open  
**Originated Date :** 09/10/2025 - Joe Hertenstein - National TAB

#### Project Task File Details



09/10/2025



09/10/2025



**Warabeya North America (Columbus, OH)**

**Project Task Information**

**Task Name :** Hood AVHC

**Description :** Complete line voltage & cat5 wiring

**Created By :** National TAB

**Assigned To :** National TAB - Stephan Gabbert

**Status :** Open

**Originated Date :** 09/10/2025 - Joe Hertenstein - National TAB

Project Task File Details



09/10/2025



## Warabeya North America (Columbus, OH)

### Project Task Information

**Task Name :** MUA's operation  
**Description :** MUA look to have power. Need to determine when the system can be energized, started up and controls to run through their sequences to allow us to then balance each unit.  
**Created By :** National TAB                      **Assigned To :** National TAB - Stephan Gabbert  
**Status :** Open  
**Originated Date :** 09/10/2025 - Joe Hertenstein - National TAB

#### Project Task File Details



09/10/2025



**Warabeya North America (Columbus, OH)**

**Project Task Information**

**Task Name :** Power to hood fans on roof  
**Description :** Final power needs connected to hood fans on roof  
**Created By :** National TAB                      **Assigned To :** National TAB - Joe Hertenstein  
**Status :** Open  
**Originated Date :** 09/10/2025 - Joe Hertenstein - National TAB

Project Task File Details



09/10/2025



09/10/2025



**Warabeya North America (Columbus, OH)**

**Project Task Information**

**Task Name :** Wash exhaust Power

**Description :** Determine on/off power for wash exhaust systems in various areas.  
Power & actuation needs installed/verified

**Created By :** National TAB

**Assigned To :** National TAB - Stephan Gabbert

**Status :** Open

**Originated Date :** 09/10/2025 - Joe Hertenstein - National TAB

Project Task File Details



09/10/2025

## Issue List

- AHU-1 Chilled Water Ports Inaccessible
- Couldn't locate MAU 4 Pete plugs
- Pump 23 not installed
- Valve handles need a lock during balancing
- Valves believed to be closed



### Warabeya North America (Columbus, OH)

#### Project Issue Information

**Issue Name :** AHU-1 Chilled Water Ports Inaccessible  
**Description :** The ports are pointing towards the pipe directly next to. Cannot access even using 90 degree probes.  
**Created By :** National TAB                      **Assigned To :** National TAB - Nick Payne  
**Status :** Open  
**Priority :** Urgent                                      **Asset Tag :**  
**Originated Date :** 09/05/2025 - Nick Payne - National TAB

#### Project Issue File Details





## Warabeya North America (Columbus, OH)

### Project Issue Information

**Issue Name :** Couldn't locate MAU 4 Pete plugs  
**Description :** Pete's plugs may need to be installed  
**Created By :** National TAB                      **Assigned To :** National TAB - Nick Payne  
**Status :** Open  
**Priority :** Medium                                      **Asset Tag :** MAU-4  
**Originated Date :** 09/05/2025 - Nathan Denney - National TAB

#### Project Issue Response Details

- **09/05/2025 National TAB - Nick Payne**
  - See picture



09/05/2025



## Warabeya North America (Columbus, OH)

### Project Issue Information

**Issue Name :** Pump 23 not installed  
**Description :** Pump 23 was present, but not wired or plumbed.  
**Created By :** National TAB                      **Assigned To :** National TAB - Nick Payne  
**Status :** Open  
**Priority :** [Medium](#)                      **Asset Tag :** P-23  
**Originated Date :** 09/05/2025 - Nathan Denney - National TAB



## Warabeya North America (Columbus, OH)

### Project Issue Information

**Issue Name :** Valve handles need a lock during balancing  
**Description :** Valves were being adjusted by pipe insulators and/or other workers during balancing. Ideally, we need to find a way to lock these valves until we are finished with TAB.  
**Created By :** National TAB                      **Assigned To :** National TAB - Nick Payne  
**Status :** Open  
**Priority :** Low                                      **Asset Tag :**  
**Originated Date :** 09/05/2025 - Nathan Denney - National TAB



## Warabeya North America (Columbus, OH)

### Project Issue Information

**Issue Name :** Valves believed to be closed  
**Description :** On UC-151 1,2 and 3-the valves may be closed.  
**Created By :** National TAB                      **Assigned To :** National TAB - Nick Payne  
**Status :** Open  
**Priority :** [Medium](#)                      **Asset Tag :** UC-151-2  
**Originated Date :** 09/05/2025 - Nathan Denney - National TAB