

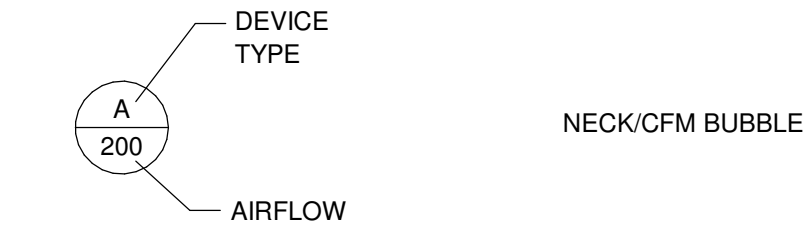
MECHANICAL SYMBOLS ABBREVIATIONS

(SOME SYMBOLS MAY NOT BE USED ON THE DRAWINGS)

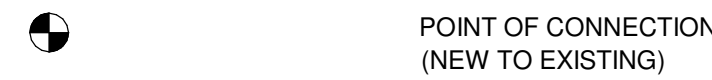
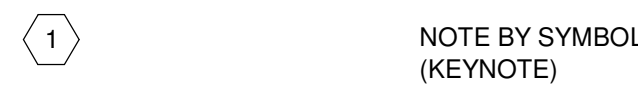
%	PERCENT	LAT	LEAVING AIR TEMPERATURE
ABS	ABSOLUTE	LBS	POUNDS
ACC	AIR-COOLED CHILLER	LF	LINEAR FEET
ACU	AIR CONDITIONING UNIT	LG	LENGTH
AD	ACCESS DOOR	LPS	LOW PRESSURE STEAM
AF	AIR FOIL	LTHW	LOW TEMPERATURE HOT WATER
AFF	ABOVE FINISHED FLOOR	LWT	LEAVING WATER TEMPERATURE
AHU	AIR HANDLING UNIT	MCA	MINIMUM CIRCUIT AMPACITY
ALT	ALTITUDE	MOCPP	MAXIMUM OVERCURRENT PROTECTION
AMB	AMBIENT	MAX	MAXIMUM
AMCA	AIR MOVEMENT AND CONTROL ASSOCIATION	MBH	BTU PER HOUR (THOUSAND)
ANSI	AMERICAN NATIONAL STANDARDS INSTITUTE	MIN	MINIMUM
APPROX	APPROXIMATE	N.C.	NORMALLY CLOSED
ARI	AIR-CONDITIONING AND REFRIGERATION INSTITUTE	N.O.	NORMALLY OPEN
ASHRAE	AMERICAN SOCIETY OF HEATING, REFRIGERATION, AND AIR-CONDITIONING ENGINEERS	N/A	NOT APPLICABLE
ASME	AMERICAN SOCIETY OF MECHANICAL ENGINEERS	NC	NOISE CRITERIA
ASTM	AMERICAN SOCIETY OF TESTING MATERIALS	NIC	NOT IN CONTRACT
AVG	AVERAGE	NTS	NOT TO SCALE
B	BOILER	OA	OUTSIDE AIR
BD	BACKDRAFT DAMPER	OBD	OPPOSED BLADE DAMPER
BG	BELOW GRADE	OD	OUTSIDE DIAMETER
BEMCS	BUILDING ENERGY MANAGEMENT AND CONTROL SYSTEM	PD	PUMPED DISCHARGE
BHP	BRAKE HORSEPOWER	PBD	PARALLEL BLADE DAMPER
BI	BACKWARD INCLINED	PH	PHASE (ELECTRICAL)
BOD	BOTTOM OF DUCT	PPM	PARTS PER MILLION
BOP	BOTTOM OF PIPE	PRESS	PRESSURE
BTU	BRITISH THERMAL UNIT	PSF	POUNDS PER SQUARE FOOT
BTUH	BTU PER HOUR	PSI	POUNDS PER SQUARE INCH
CD	COLD DECK	PSIA	PSI ABSOLUTE
CF	CUBIC FEET	PSIG	PSI GAGE
CFM	CUBIC FEET PER MINUTE	R	RANKINE
CHET	CHILLED WATER EXPANSION TANK	R-22	REFRIGERANT (NUMBER INDICATES TYPE)
CMPR	COMPRESSOR	RA	RETURN AIR
COND	CONDENSER	RAF	RELIEF AIR FAN
CRAC	COMPUTER ROOM AIR CONDITIONER	RECIRC	RECIRCULATE
CT	COOLING TOWER	RH	RELATIVE HUMIDITY
CHWR	CHILLED WATER RETURN	RHC	REHEAT COIL
CHWS	CHILLED WATER SUPPLY	RPM	REVOLUTIONS PER MINUTE
CU IN	CUBIC INCH	SA	SUPPLY AIR
dB	DECIBEL	SC	SHADING COEFFICIENT
DB	DRY BULB	SCFM	CUBIC FEET PER MINUTE-STANDARD CONDITIONS
DCP	DISTRIBUTED CONTROL PANEL	SD	SMOKE DAMPER
DEG	DEGREE	SEC	SECOND
DIA	DIAMETER	SF	SQUARE FEET
DWG	DRAWING	SG	SPECIFIC GRAVITY
DX	DIRECT-EXPANSION	SHG	SENSIBLE HEAT GAIN
EAT	ENTERING AIR TEMPERATURE	SHR	SENSIBLE HEAT RATIO
EDH	ELECTRIC DUCT HEATER	SP	STATIC PRESSURE
EF	EXHAUST FAN	SPEC	SPECIFICATION
EFF	EFFICIENCY	SQ	SQUARE
EL	ELEVATION	SSD	SUB-SOIL DRAINAGE
ENT	ENTERING	STD	STANDARD
ESP	EXTERNAL STATIC PRESSURE	SUCT	SUCTION
EXP	EXPANSION	t	TIME
F	FAHRENHEIT	T	TEMPERATURE SENSOR
FA	FACE AREA	TD	TEMPERATURE DIFFERENCE
FCU	FAN COIL UNIT	TEMP	TEMPERATURE
FD	FIRE DAMPER	TOC	TOP OF CONCRETE
FH	FUME HOOD	TOD	TOP OF DUCT
FLEX	FLEXIBLE	TONS	TONS OF REFRIGERATION
FPM	FEET PER MINUTE	TOP	TOP OF PIPE
FPS	FEET PER SECOND	TOS	TOP OF STEEL
FRP	FIBERGLASS REINFORCED PIPE	TSP	TOTAL STATIC PRESSURE
FS	FLOW SWITCH	T-STAT	THERMOSTAT
FSD	COMBINATION FIRE-SMOKE DAMPER	TU	TERMINAL UNIT
FT	FEET OR FOOT	TYP	TYPICAL
FTU	FAN TERMINAL UNIT	U	HEAT TRANSFER COEFFICIENT
GA	GAUGE OR GAGE	UH	UNIT HEATER
GAL	GALLONS	UF	UNDER FLOOR
GALV	GALVANIZED	V	VOLT
GPD	GALLONS PER DAY	VA	VOLT AMPERE
GPH	GALLONS PER HOUR	VAC	VACUUM
GPM	GALLONS PER MINUTE	VAV	VARIABLE AIR VOLUME
GR	GRAINS	VD	VOLUME DAMPER
H	ENTHALPY	VENT	VENTILATION
HD	HEAD	VERT	VERTICAL
HD	HOT DECK	VFD	VARIABLE FREQUENCY DRIVE
HG	HEAT GAIN OR MERCURY	VOL	VOLUME
HGT	HEIGHT	VP	VELOCITY PRESSURE
HP	HORSEPOWER	W	HUMIDITY RATIO OR WATT
HPS	HIGH PRESSURE STEAM	W.C.	WATER COLUMN
HR	HOUR	W.G.	WATER GAUGE
HTHW	HIGH TEMPERATURE HEATING WATER	WB	WET BULB
HVAC	HEATING/VENTILATING/AIR-CONDITIONING	WT	WEIGHT
HVU	HEATING AND VENTILATING UNIT	YR	YEAR
HWR	HEATING HOT WATER RETURN		
HWS	HEATING HOT WATER SUPPLY		
HZ	FREQUENCY		
ID	INSIDE DIAMETER		
IPS	INTERNATIONAL PIPE STANDARD		
ips	IRON PIPE SIZE		
K	THERMAL CONDUCTIVITY		
KH	KITCHEN HOOD		
KW	KILOWATT		

SHEET SYMBOLS

X **DETAIL TITLE**
SCALE: 1/2" = 1'-0"



AHU-1 OR RTU-XXX EQUIPMENT TAG



MECHANICAL EQUIPMENT

FSD COMBINATION FIRE/SMOKE DAMPER

FD FIRE DAMPER

SD SMOKE DAMPER

FSD COMBINATION FIRE/SMOKE DAMPER IN VERTICAL SA DUCT

FSD COMBINATION FIRE/SMOKE DAMPER IN VERTICAL RA DUCT

NEW EQUIPMENT (SIZE, SHAPE WILL VARY)

FUTURE KITCHEN / VENTILATION EQUIPMENT (SIZE, SHAPE WILL VARY)

EQUIPMENT TO REMAIN (SIZE, SHAPE WILL VARY)

SP DUCT STATIC PRESSURE SENSOR

DP DIFFERENTIAL PRESSURE SENSOR

T WALL MOUNTED THERMOSTAT

T WALL MOUNTED TEMPERATURE SENSOR

CO2 CARBON DIOXIDE SENSOR

OS OCCUPANCY SENSOR

DUCTWORK

DIFFUSER FLOW ARROWS (IF NO ARROWS ARE SHOWN, DIFFUSER IS 4-WAY THROW)

SUPPLY DIFFUSER

ROUND SUPPLY DIFFUSER

RETURN REGISTER

EXHAUST REGISTER

SIDEWALL SUPPLY GRILLE

SIDEWALL RETURN GRILLE

LOUVER W/ SCREEN (IN WALL)

SLOT DIFFUSER

LINEAR DIFFUSER

RETURN AIR SLOT DEVICE

MANUAL OPPOSED BLADE DAMPER

MANUAL BLADE DAMPER

90° ELBOW W/ TURNING VANES

90° MITERED ELBOW

45° MITERED ELBOW

90° LONG RADIUS ELBOW

45° LONG RADIUS ELBOW

CONCENTRIC TRANSITION

ECCENTRIC TRANSITION

RECTANGULAR TO ROUND TRANSITION

RECTANGULAR BRANCH TAP (SMACNA 45)

CONICAL BRANCH TAP

CONICAL LATERAL BRANCH TAKE-OFFS

DUCT CAP

DUCT CONTINUATION - ROUND

DUCT CONTINUATION - RECTANGULAR

DUCT ACCESS DOOR

SUPPLY DUCT (UP / DOWN)

RETURN DUCT (UP / DOWN)

EXHAUST DUCT (UP / DOWN)

ROUND DUCT (UP / DOWN)

RECTANGULAR DUCT SIZE (WIDTH / HEIGHT)

ROUND DUCT SIZE

FLEXIBLE DUCT CONNECTION

SIDEWALL REGISTER TAP WITH DAMPER

M MOTORIZED DAMPER

M OPPOSED BLADE MOTORIZED DAMPER

BD BACKDRAFT DAMPER

FLEXIBLE DUCT CONNECTION

MAJOR SPLIT

TRANSFER BOOT

PIPING SYMBOLS

PIPING UP

PIPING DOWN

CO CLEANOUT

18' FT DIRECTION OF SLOPE

CD CONDENSATE DRAIN

HVAC DESIGN CRITERIA

ASHRAE FUNDAMENTALS - 2021:

SUMMER COOLING DESIGN (0.4%):

WEATHER STATION - Dallas, TX

101 °F DRY BULB

ELEVATION: 171'

74 °F MEAN COINCIDENT WET BULB

WINTER HEATING DESIGN (99.6%):

23 °F DRY BULB

GENERAL NOTES

- REFER TO SPECIFICATIONS FOR MATERIALS AND METHODS FOR CONSTRUCTION.
- DUCTWORK SIZES SHOWN ARE FREE AIR STREAM DIMENSIONS.
- INSTALL DUCTWORK AND PIPING TO PROVIDE THE MAXIMUM POSSIBLE CLEAR HEIGHT UNDERNEATH. (BETWEEN STRUCTURE OR CEILING AND TOP OF DUCT).
- WHERE APPROVAL CODES HAVE BEEN ESTABLISHED BY OSHA, UNDERWRITER'S LABORATORY, AMERICAN CODES, ANSI, ASME, ASA, ASHRAE, ASTM, ARI, NEL, NFPA, SMACNA, OR THE STATE FIRE INSURANCE REGULATORY BODY, FOLLOW THESE STANDARDS WHETHER OR NOT INDICATED ON THE DRAWINGS AND SPECIFICATIONS.
- PROVIDE THE ENTIRE SYSTEM AND ITS COMPONENT ITEMS OF EQUIPMENT IN OPERATING CONDITION FREE OF OBJECTIONABLE VIBRATION OR NOISE.
- PERFORM WORK IN ACCORDANCE WITH THE LATEST EDITIONS, REVISIONS, AMENDMENTS OR SUPPLEMENTS OF APPLICABLE STATUTES, ORDINANCES, CODES OR REGULATIONS OF FEDERAL, STATE AND LOCAL AUTHORITIES HAVING JURISDICTION IN EFFECT ON THE DATE BIDS ARE RECEIVED.
- COORDINATE WORK SO THAT INTERFERENCES BETWEEN PIPING, DUCTWORK, EQUIPMENT, PLUMBING WORK, ELECTRICAL WORK, AND BUILDING STRUCTURE WILL BE AVOIDED.
- FURNISH ACCESS DOORS FOR INSTALLATION IN WALLS AND CEILINGS WHERE ACCESS IS REQUIRED TO CONCEALED MECHANICAL EQUIPMENT, VALVES, CONTROLS AND OTHER DEVICES.
- COORDINATE THE EXACT LOCATION OF DRAIN AND MECHANICAL EQUIPMENT LOCATIONS WITH MECHANICAL, ARCHITECTURAL, AND STRUCTURAL DRAWINGS PRIOR TO INSTALLATION.
- RECTANGULAR ELBOWS SHALL BE LONG-RADIUS ELBOWS UNLESS OTHERWISE SHOWN OR NOTED. SUPPLY AIR STANDARD NON-RADIUS 90° ELBOWS SHALL HAVE TURNING VANES.
- AIR CONDITIONING LOAD CALCULATIONS BASED ON LOCAL CLIMATE DATA. ADJUST UNIT SIZES, AIRFLOW, DUCT SIZES AND AIR DEVICES TO HVAC LOAD CALCULATIONS BASED ON STORE LOCATION. COORDINATE RTU LOCATIONS, DIMENSIONS, AND WEIGHTS WITH STRUCTURAL ENGINEER AND ARCHITECT.



Gensler

229 E. Houston St. Suite 200 San Antonio, TX 78205 United States Tel 210.222.8059



Date	Description
11.20.2024	Issue for Permit
1 02.14.2025	City Comments Revision 1
3 06.13.2025	City Comments Revision 3



Seal / Signature



Project Name FM WHATABURGER

PT22M FLOWER MOUND, TEXAS 3195 LONG PRAIRIE RD, LOT 1, BLOCK A, EMBREE 2489 SUBDIVISION

Project Number

122.1024.000

Description
GENERAL NOTES, SYMBOLS AND ABBREVIATIONS

Scale

12" = 1'-0"

M0.1

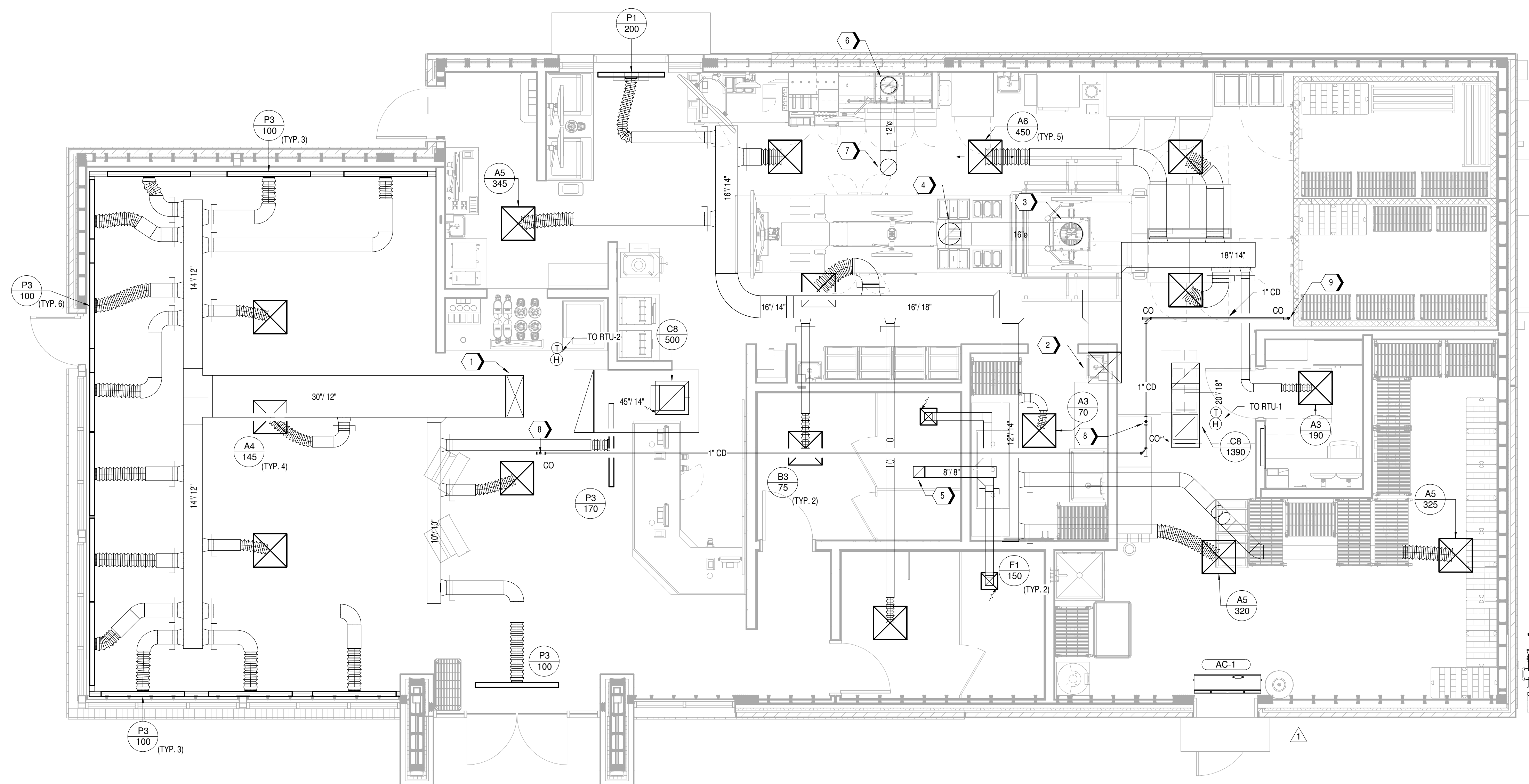
6/10/2025 3:10:44 PM Autodesk Docs://22.0088.510 - WB - Flower Mound TX PT22M/LOWER MOUND TX PT22M_MECH_R21.rvt

KEYNOTES

1. 30"12 SUPPLY DUCT UP TO RTU-2. PROVIDE DUCT TRANSITION AS REQUIRED TO MATCH UNIT CONNECTION SIZE.
2. 24"22 SUPPLY DUCT UP TO RTU-1. PROVIDE DUCT TRANSITION AS REQUIRED TO MATCH UNIT CONNECTION SIZE.
3. CONNECT KITCHEN EXHAUST HOOD ABOVE GRILL UP TO KEF-1 WITH 16" DIA. PREFABRICATED UL 1978 LISTED AND LABELED GREASE DUCT. PROVIDE TRANSITIONS ABOVE CEILING AS REQUIRED.
4. 16" EXHAUST DUCT UP TO KEF-1 ON ROOF, RE: A1/M2.1
5. 8"x8" EXHAUST DUCT UP TO EF-1.
6. CONNECT KITCHEN EXHAUST HOOD ABOVE FRYER UP TO KEF-2 WITH 12" DIA. PREFABRICATED UL 1978 LISTED AND LABELED GREASE DUCT. PROVIDE TRANSITIONS ABOVE CEILING AS REQUIRED.
7. 12" EXHAUST DUCT UP TO KEF-2 ON ROOF, RE: A1/M2.1
8. FULLY INSULATED COPPER CONDENSATE UP THROUGH ROOF. CONDENSATE TO START HORIZONTAL RUN AS CLOSE TO STRUCTURE INSIDE BUILDING AS POSSIBLE.
9. CONDENSATE DOWN TO FLOOR SINK. TERMINATE CONDENSATE WITH 1" AIR GAP.

GENERAL NOTES

- A. REFER TO M0.1 FOR GENERAL NOTES, SYMBOLS AND ABBREVIATIONS.
- B. SMOKE DETECTORS SHALL BE PROVIDED BY THE FIRE ALARM CONTRACTOR AND INSTALLED IN THE SUPPLY AND RETURN SIDES OF RTU. COORDINATE WIRING FOR SHUTDOWN WITH ELECTRICAL SCOPE. MOUNT SMOKE DETECTORS IN ACCESSIBLE LOCATIONS. REFERENCE M6.1 FOR RTU SCHEDULE. ACTIVATION OF SMOKE DETECTORS SHALL SHUT DOWN RTU AND ACTIVATE THE AUDIBLE AND VISUAL SIGNAL PROVIDED.
- C. THE PILOT RDM SYSTEM SHALL BE MOUNTED AND INSTALLED FLUSH IN THE MANAGER'S OFFICE AT 5' AFF TO CENTER.
- D. PER IECC 2018, PARAGRAPH C408.2.1, A THIRD PARTY SHALL BE HIRED BY THE OWNER AS PART OF THIS PROJECT TO PROVIDE/PERFORM THE FOLLOWING ITEMS:
 - A NARRATIVE DESCRIPTION OF THE ACTIVITIES THAT WILL BE ACCOMPLISHED DURING EACH PHASE OF COMMISSIONING, INCLUDING THE PERSONNEL INTENDED TO ACCOMPLISH EACH OF THE ACTIVITIES.
 - A LISTING OF THE SPECIFIC EQUIPMENT, APPLIANCES OR SYSTEMS TO BE TESTED AND A DESCRIPTION OF THE TESTS TO BE PERFORMED.
 - FUNCTIONS TO BE TESTED INCLUDING, BUT NOT LIMITED TO, CALIBRATIONS AND ECONOMIZER CONTROLS.
 - CONDITIONS UNDER WHICH THE TEST WILL BE PERFORMED. TESTING SHALL AFFIRM WINTER AND SUMMER DESIGN CONDITIONS AND FULL OUTSIDE AIR CONDITIONS.
 - MEASURABLE CRITERIA FOR PERFORMANCE.
- E. KITCHEN HOODS, ANSUL FIRE SUPPRESSION SYSTEM AND HOOD CONTROLS SHALL BE OWNER-FURNISHED AND CONTRACTOR-INSTALLED.
- F. TEMPERATURE SENSORS "T" AND HUMIDITY SENSORS "H" ARE TO BE CEILING MOUNTED AND TIED INTO THE BUILDING CONTROL SYSTEM.
- G. ALL TESTS AND BALANCES TO BE PERFORMED BY A THIRD PARTY - NOT BY MEP SUBCONTRACTOR.



A1 MECHANICAL FLOOR PLAN - LEVEL 1
1/4" = 1'-0"



Gensler

229 E. Houston St. Suite 200
San Antonio, TX 78205
United States
Tel 210.222.8059

wallace design collective
wallace design collective, pc
structural civil landscape survey
123 north martin luther king jr boulevard
tulsa oklahoma 74103
918.584.5858 - 800.364.5858

CLEARY ZIMMERMANN
ENGINEERS
Firm No. F-9317 | ClearZimmermann.com
1344 G. Flores, Ste. 101, San Antonio, TX 78204

HALFF
1201 North Bowser Road
Richardson, Texas 75081-2275

ENTERA
Your total branding solution
5900 Venture Crossing Blvd, Panama City, FL 32409

△ Date	Description
11.20.2024	Issue for Permit
1 02.14.2025	City Comments Revision 1
3 06.13.2025	City Comments Revision 3

Seal / Signature



Project Name **FM WHATABURGER**
PT22M
FLOWER MOUND, TEXAS
3185 LONG PRAIRIE RD, LOT 1, BLOCK A,
EMBREE 2489 SUBDIVISION
Project Number
122.1024.000

Description
MECHANICAL FLOOR PLAN

Scale
1/4" = 1'-0"

M1.1



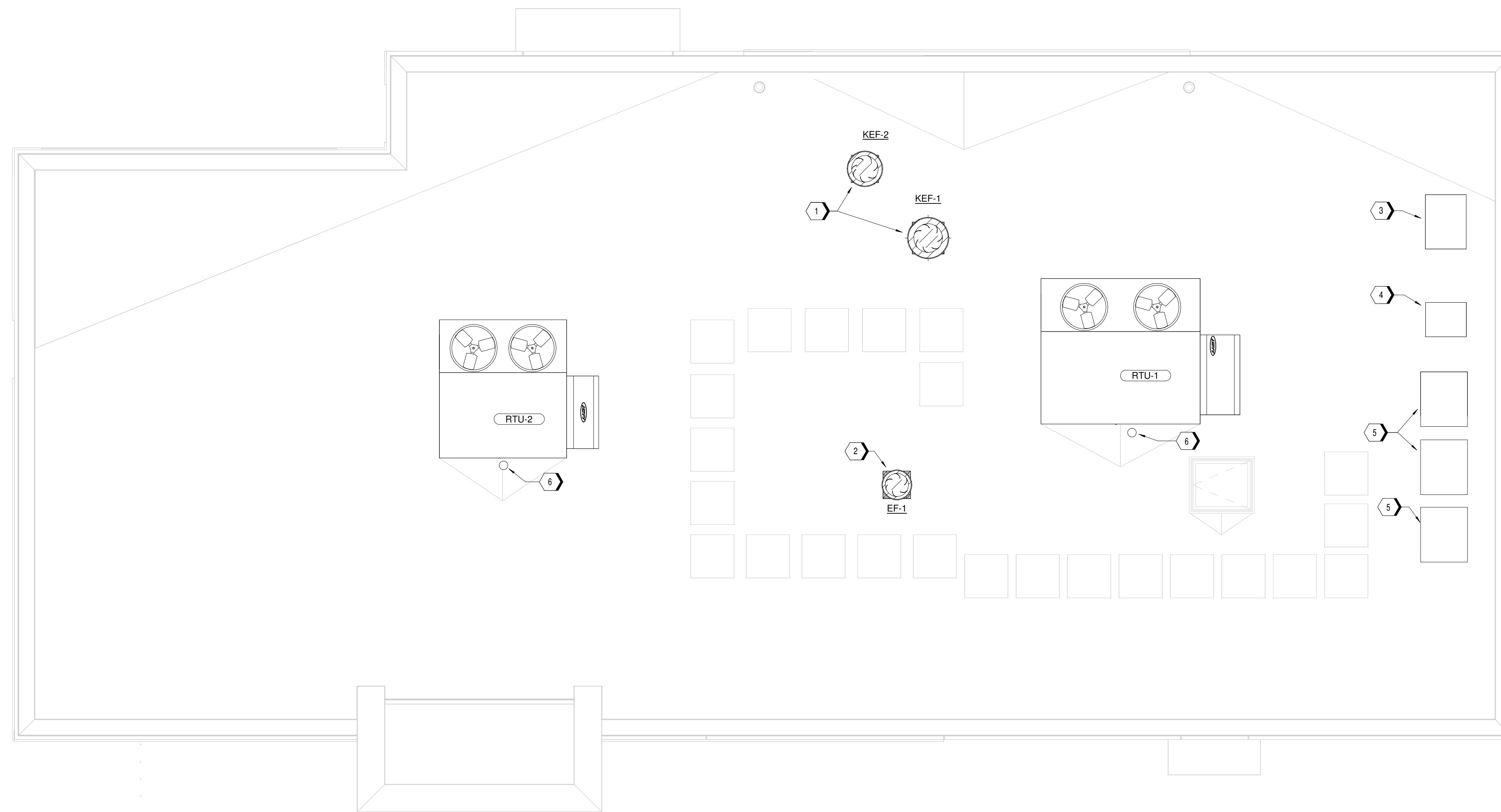
6/10/2025 3:10:47 PM Autodesk Docs://22.0088.510 - WB - Flower Mound TX PT22M/LOWER.MOUND TX PT22M_MECH_R21.rvt

KEYNOTES

1. CENTRIFUGAL UPBLAST GREASE HOOD EXHAUST FAN MOUNTED ON MANUFACTURER PROVIDED ROOF CURB, RE: A2/M5.1
2. CENTRIFUGAL DOWNBLAST EXHAUST FAN MOUNTED ON MANUFACTURER PROVIDED ROOF CURB, RE: A1/M5.1
3. KITCHEN FREEZER CONDENSING UNIT MOUNTED ON ROOFTOP; FURNISHED BY OWNER, COORDINATE EXACT LOCATION ONO SITE AND ROUTE REFRIGERATION (BY OTHERS);
4. KITCHEN REFRIGERATOR CONDENSING UNIT MOUNTED ON ROOFTOP; FURNISHED BY OWNER, COORDINATE EXACT LOCATION ON SITE AND ROUTE REFRIGERATION PIPING THROUGH ROOF PENETRATION (BY OTHERS);
5. KITCHEN ICEMAKER CONDENSING UNIT MOUNTED ON ROOFTOP; FURNISHED BY OWNER, COORDINATE EXACT LOCATION ON SITE AND ROUTE REFRIGERATION PIPING THROUGH ROOF PENETRATION (BY OTHERS);
6. ROUTE CONDENSATE LINE DOWN THROUGH ROOF. RE:A1/M1.1 FOR CONTINUATION.

GENERAL NOTES

- A. REFER TO M0.1 FOR GENERAL NOTES, SYMBOLS AND ABBREVIATIONS.
- B. SMOKE DETECTORS SHALL BE PROVIDED BY THE FIRE ALARM CONTRACTOR AND INSTALLED IN THE SUPPLY AND RETURN SIDES OF RTU. COORDINATE WIRING FOR SHUTDOWN WITH ELECTRICAL SCOPE. MOUNT SMOKE DETECTORS IN ACCESSIBLE LOCATIONS. REFERENCE M6.1 FOR RTU SCHEDULE. ACTIVATION OF SMOKE DETECTORS SHALL SHUT DOWN RTU AND ACTIVATE THE AUDIBLE AND VISUAL SIGNAL PROVIDED.
- C. THE PILOT RDM SYSTEM SHALL BE MOUNTED AND INSTALLED FLUSH IN THE MANAGER'S OFFICE AT 5' AFF TO CENTER.
- D. PER IECC 2018, PARAGRAPH C408.2.1, A THIRD PARTY SHALL BE HIRED BY THE OWNER AS PART OF THIS PROJECT TO PROVIDE/PERFORM THE FOLLOWING ITEMS:
 - A NARRATIVE DESCRIPTION OF THE ACTIVITIES THAT WILL BE ACCOMPLISHED DURING EACH PHASE OF COMMISSIONING, INCLUDING THE PERSONNEL INTENDED TO ACCOMPLISH EACH OF THE ACTIVITIES.
 - A LISTING OF THE SPECIFIC EQUIPMENT, APPLIANCES OR SYSTEMS TO BE TESTED AND A DESCRIPTION OF THE TESTS TO BE PERFORMED.
 - FUNCTIONS TO BE TESTED INCLUDING, BUT NOT LIMITED TO, CALIBRATIONS AND ECONOMIZER CONTROLS.
 - CONDITIONS UNDER WHICH THE TEST WILL BE PERFORMED. TESTING SHALL AFFIRM WINTER AND SUMMER DESIGN CONDITIONS AND FULL OUTSIDE AIR CONDITIONS.
 - MEASURABLE CRITERIA FOR PERFORMANCE.
- E. KITCHEN HOODS, ANSUL FIRE SUPPRESSION SYSTEM AND HOOD CONTROLS SHALL BE OWNER-FURNISHED AND CONTRACTOR-INSTALLED.
- F. MAINTAIN A MINIMUM CLEARANCE OF 10 FEET BETWEEN OUTSIDE AIR INTAKES AND ANY EXHAUST, FLUES, OR VENTS THROUGH ROOF.
- G. ALL TESTS AND BALANCES TO BE PERFORMED BY A THIRD PARTY - NOT BY MEP SUBCONTRACTOR.
- H. VERIFY RTU'S ARE LEVEL AND CONDENSATE IS DRAINING PROPERLY.



Gensler

229 E. Houston St. Tel 210.222.8059
 Suite 200
 San Antonio, TX 78205
 United States

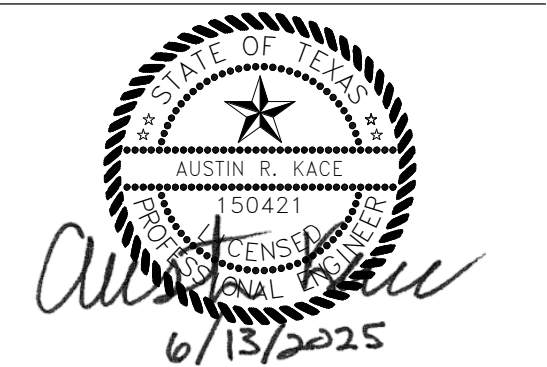
wallace design collective, pc
 wallace design collective, pc
 structural civil landscape survey
 123 north north luther king jr boulevard
 suite 4000 san antonio
 78203
 978.584.5858 - 800.364.5858



5900 Venture Crossing Blvd, Panama City, FL 32409

Date	Description
02.14.2025	City Comments Revision 1
06.13.2025	City Comments Revision 3

Seal / Signature



Project Name FM WHATABURGER
 PT22M
 FLOWER MOUND, TEXAS
 3185 LONG PRAIRIE RD, LOT 1, BLOCK A,
 EMBREE 2489 SUBDIVISION

Project Number
 122.1024.000

Description
 MECHANICAL ROOF PLAN

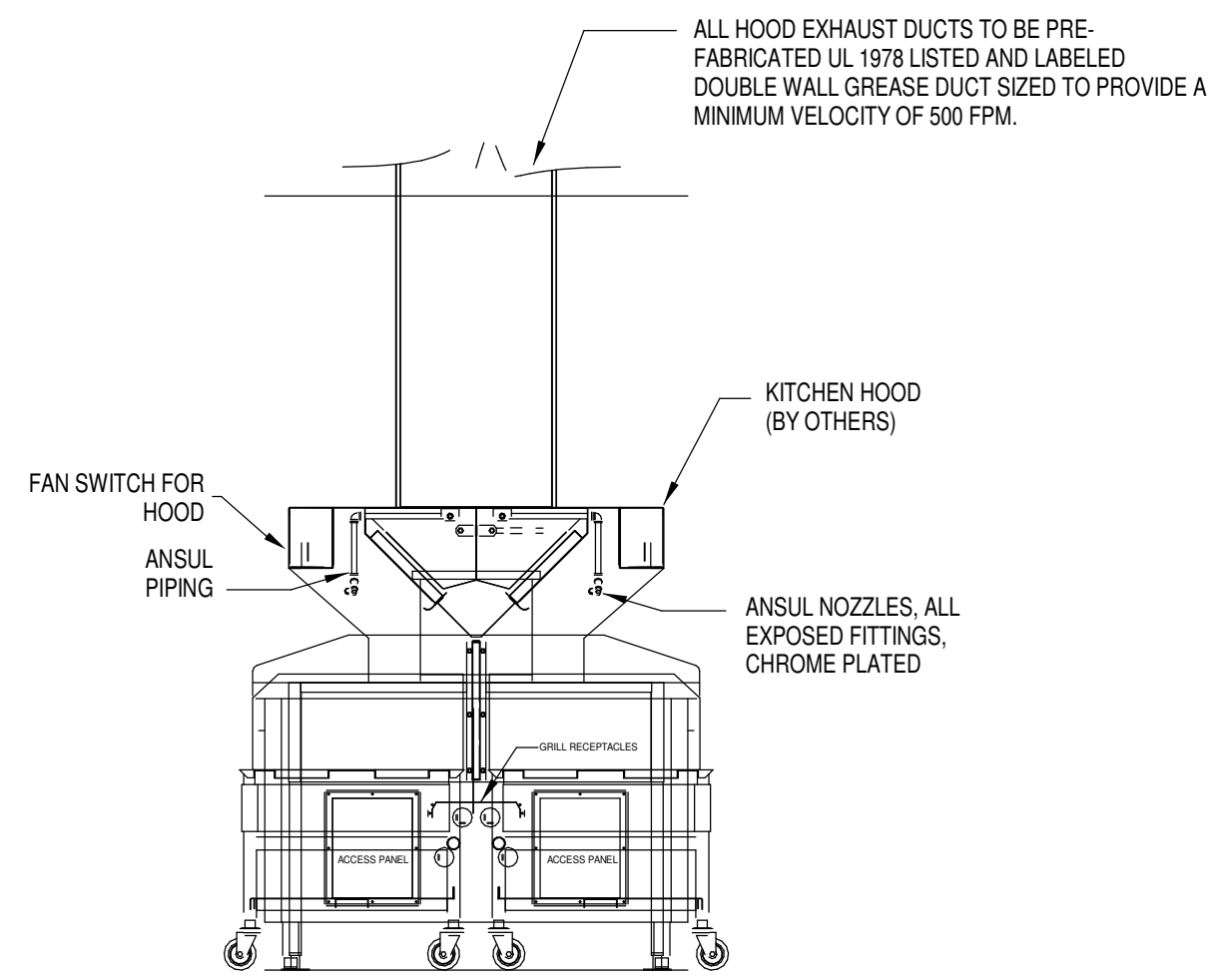
Scale
 1/4" = 1'-0"

M2.1

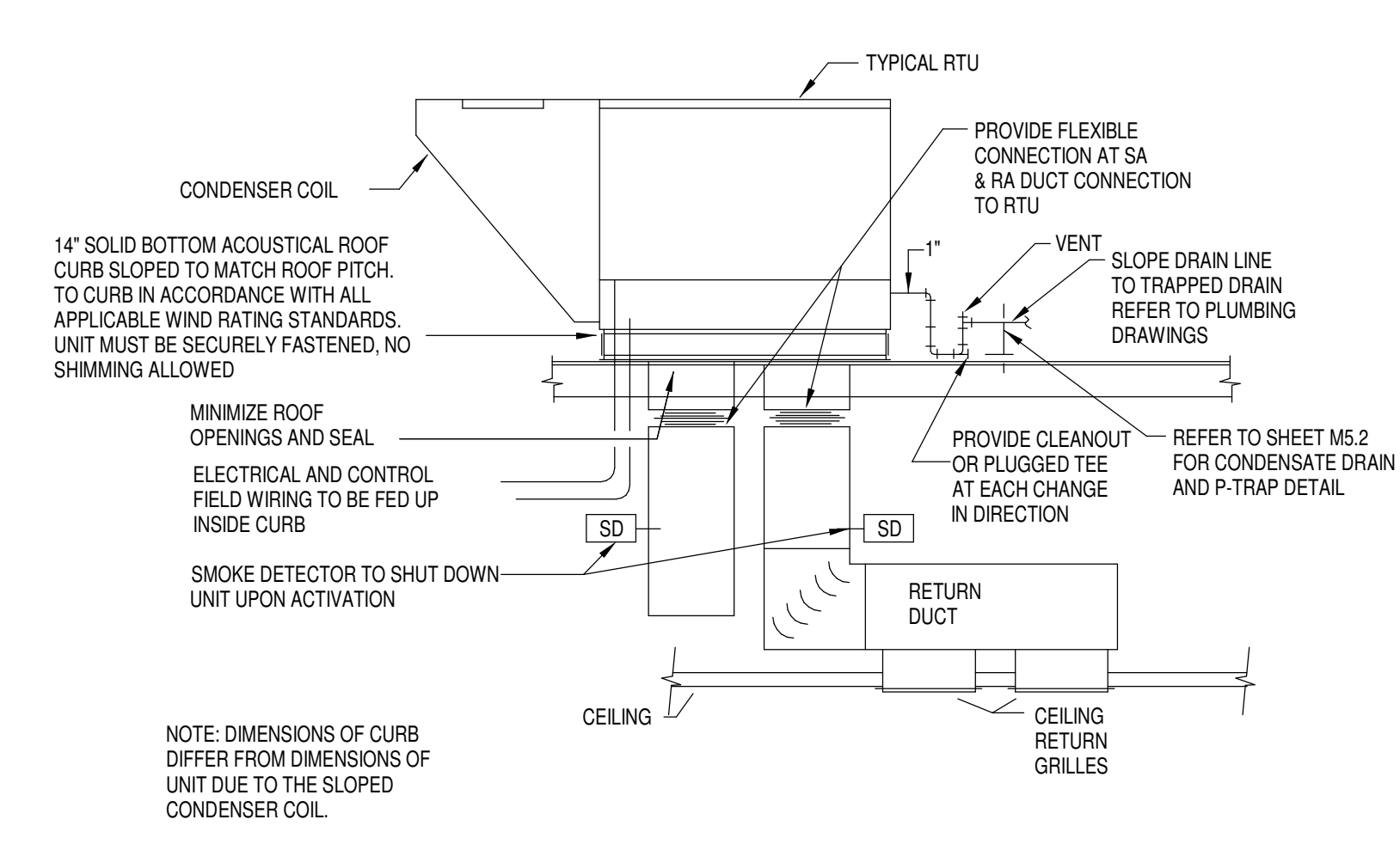


A1 MECHANICAL ROOF PLAN
 1/4" = 1'-0"

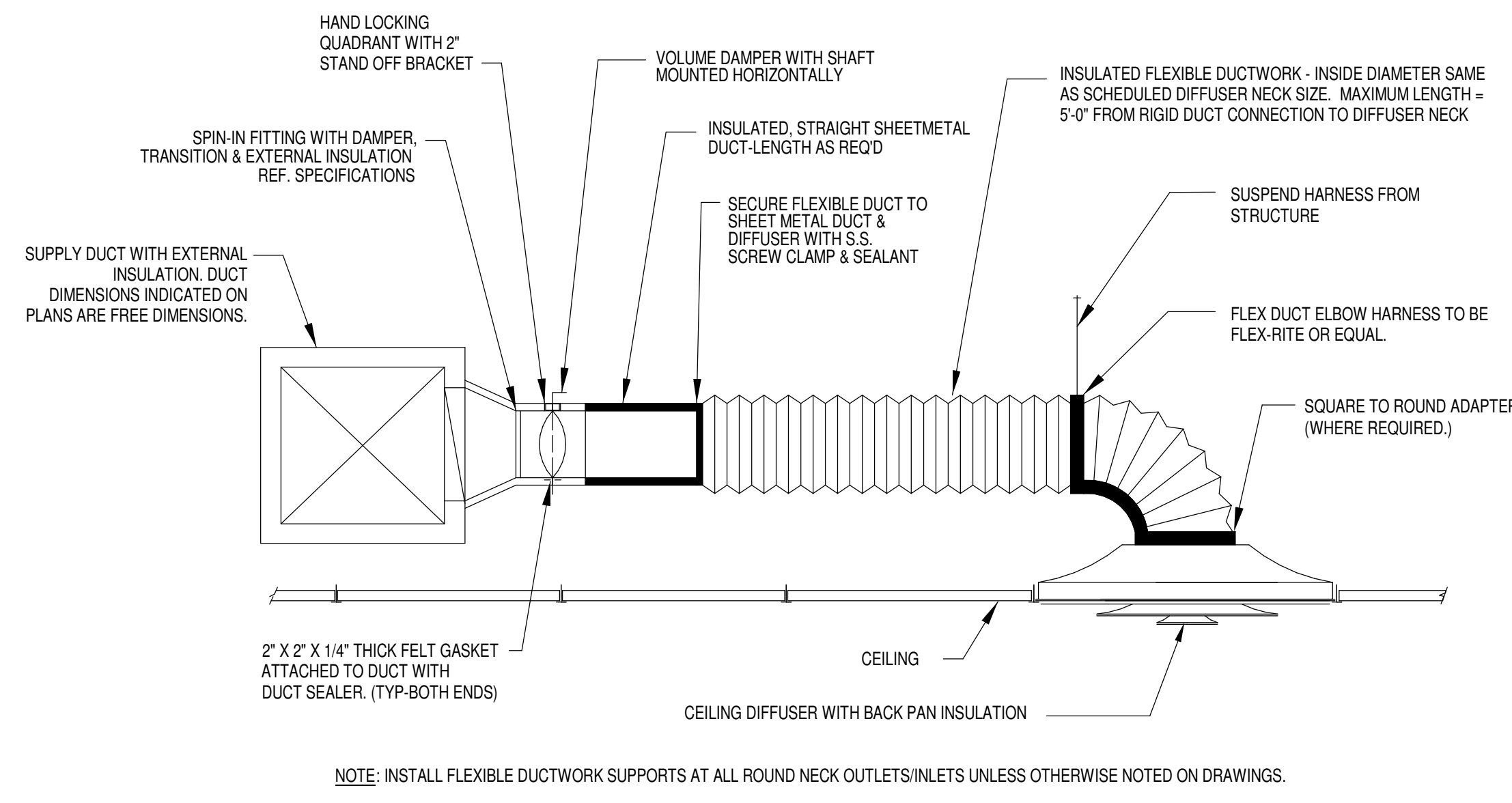
6/10/2025 3:10:48 PM Autodesk Docs://122.0088.510 - WB - Flower Mound TX PT22M/LOWER MOUND TX PT22M_MECH_R21.rvt



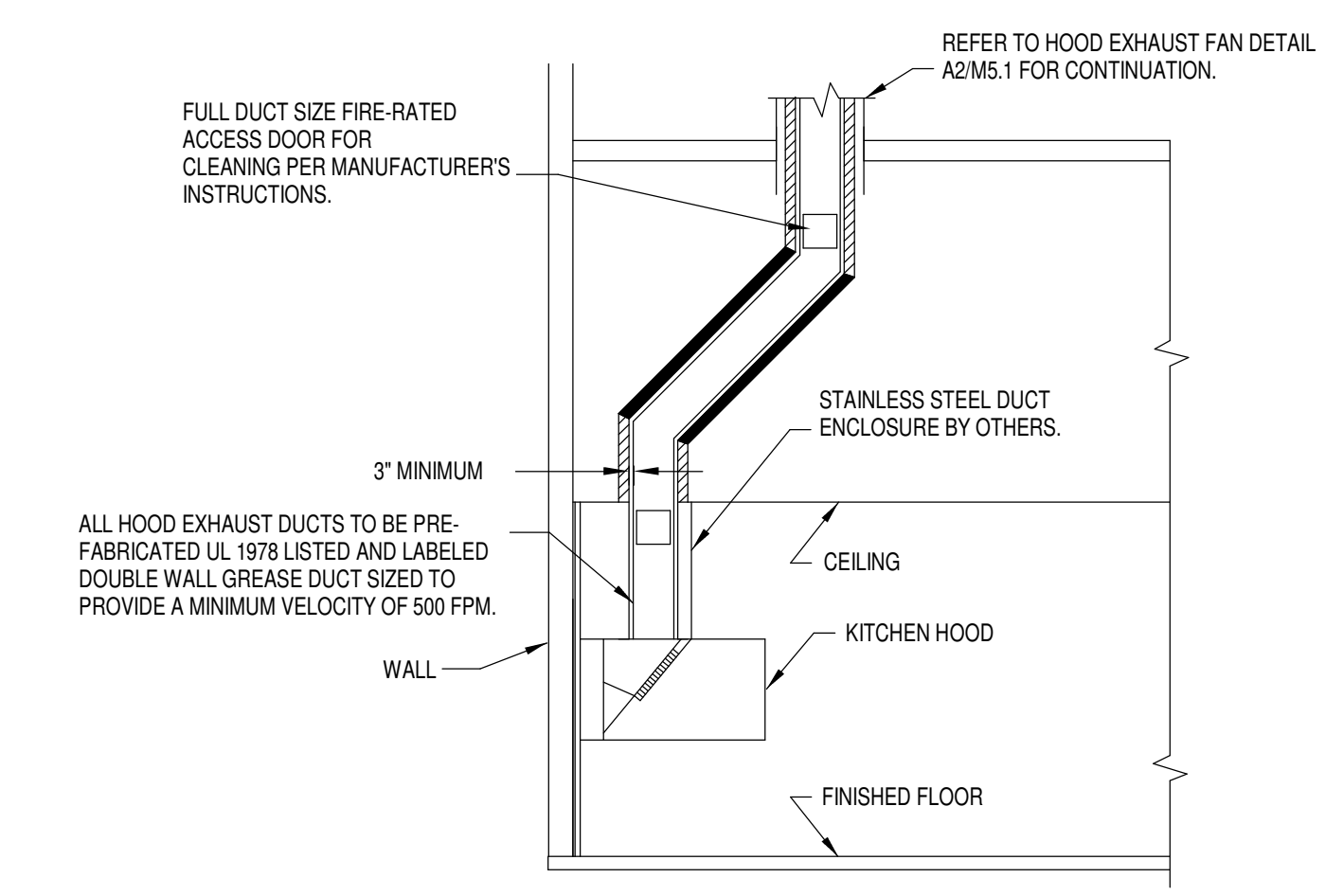
C3 LOW PROFILE HOOD DETAIL
N.T.S.



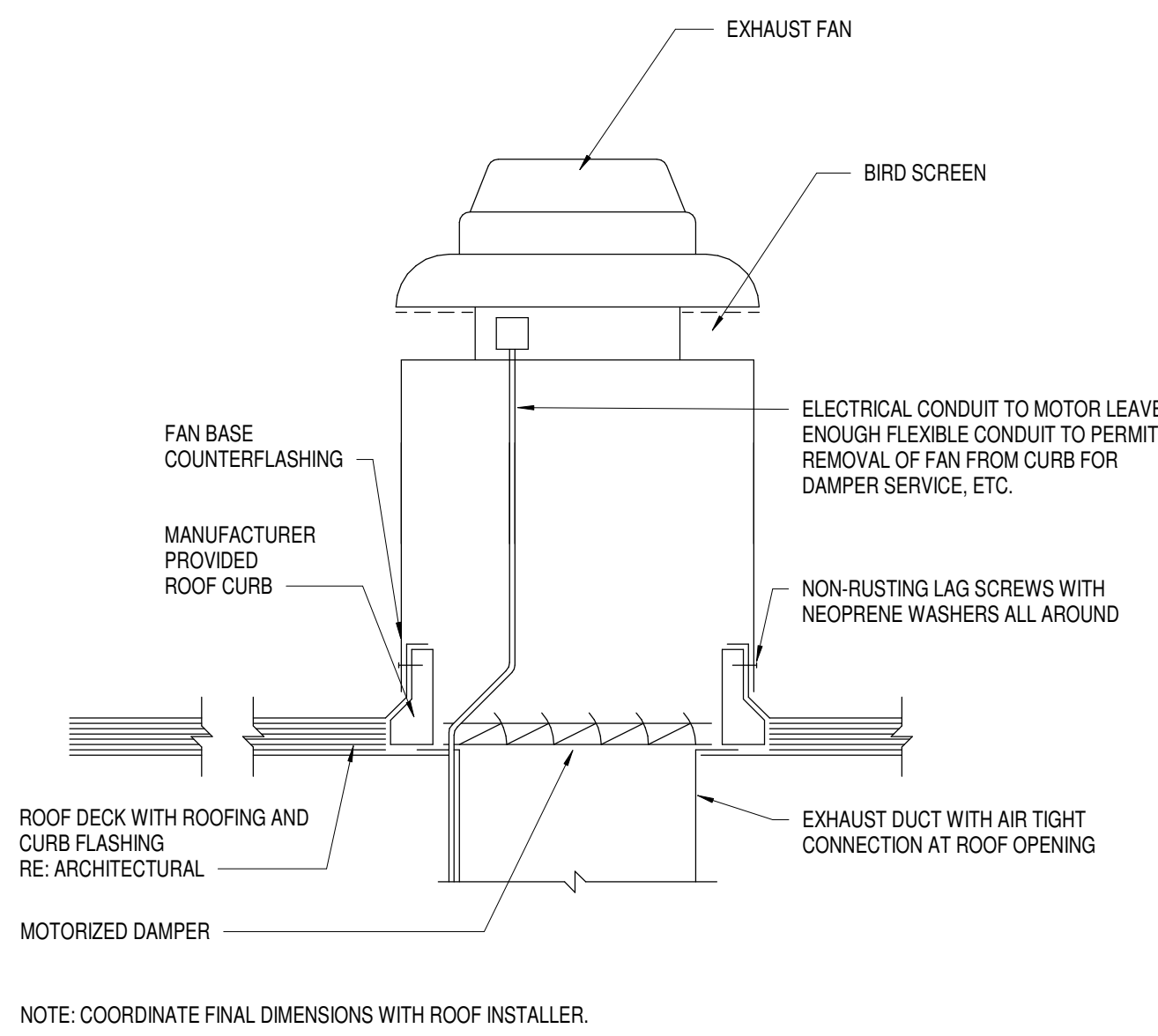
C4 ROOFTOP HVAC UNIT DETAIL
N.T.S.



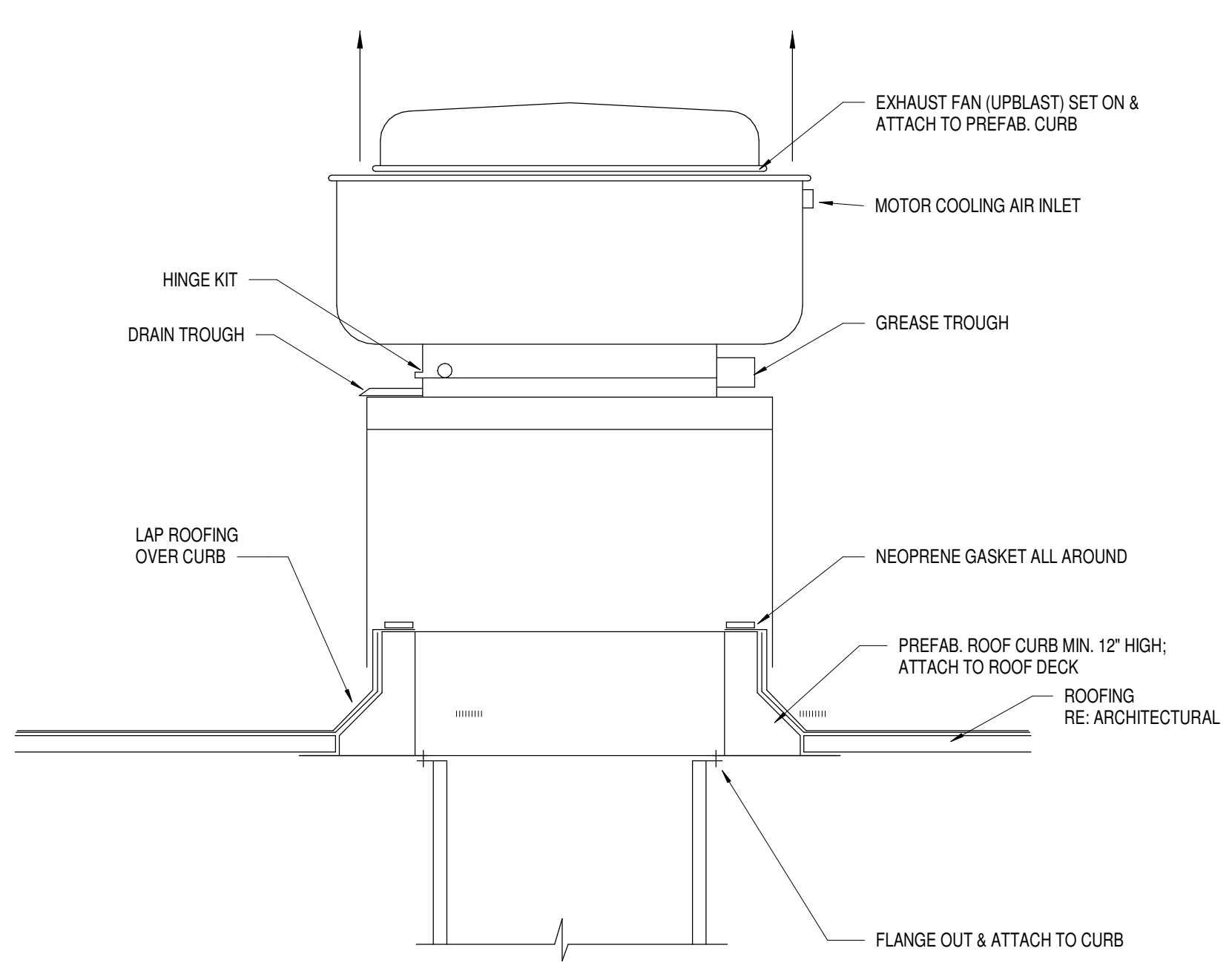
B2 DIFFUSER CONNECTION DETAIL
N.T.S.



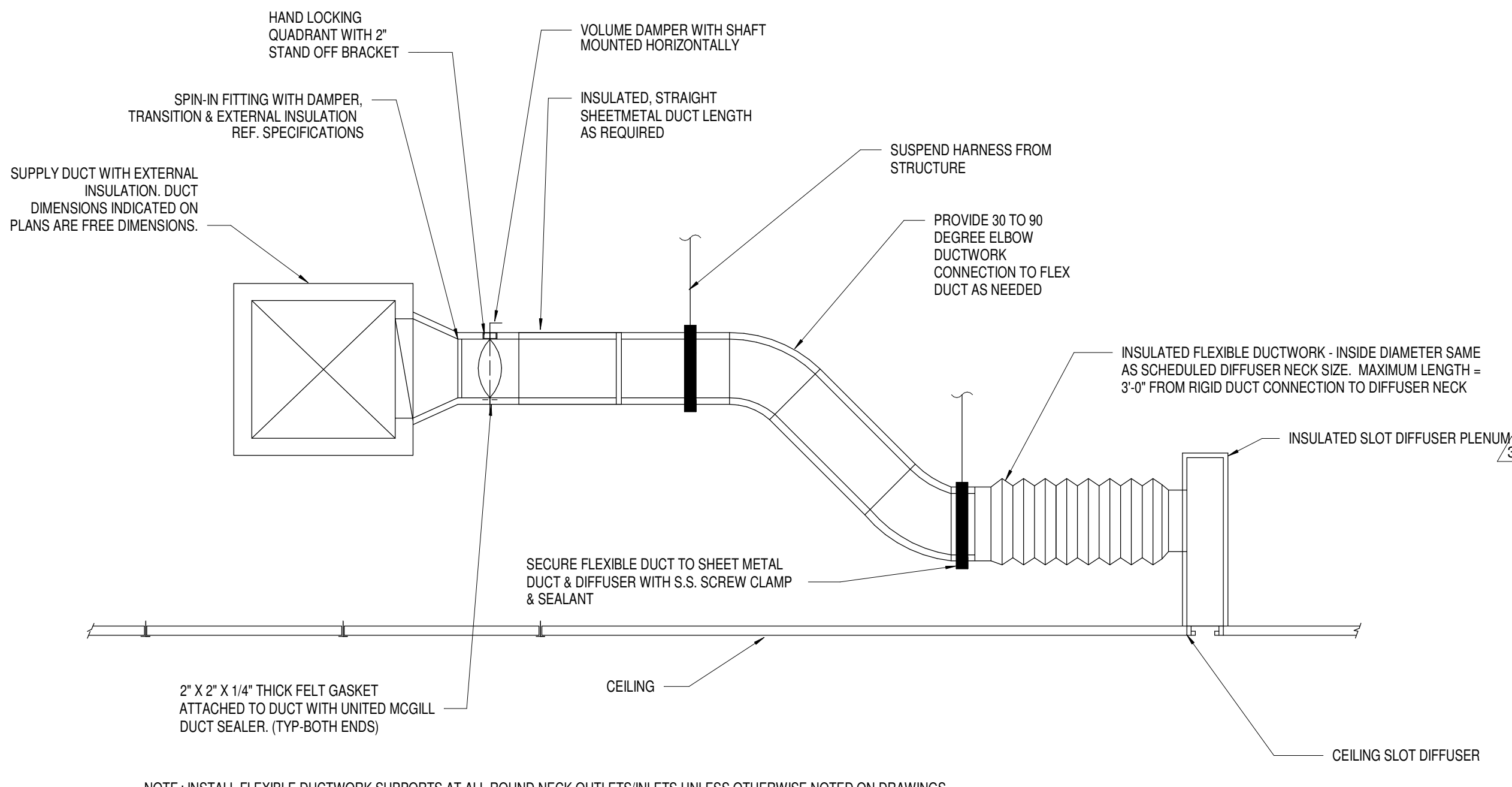
B4 HOOD EXHAUST DUCT DETAIL
N.T.S.



A1 ROOF MOUNTED EXHAUST FAN AND CURB DETAIL
N.T.S.



A2 ROOFTOP GREASE EXHAUST FAN DETAIL
N.T.S.



A3 PLENUM SLOT DIFFUSER DETAIL
N.T.S.



Gensler

229 E. Houston St. Suite 200 San Antonio, TX 78205 United States
Tel 210.222.8059

wallace design collective
wallace design collective, pc
structural, civil, landscape, survey
1201 north northin luther king jr boulevard
texas 78204-3803
978.584.5858-800.364.5858

CLEARY ZIMMERMANN ENGINEERS
Firm No. F-9337 | ClearyZimmermann.com
1344 S. Flores, Ste. 100, San Antonio, TX 78204

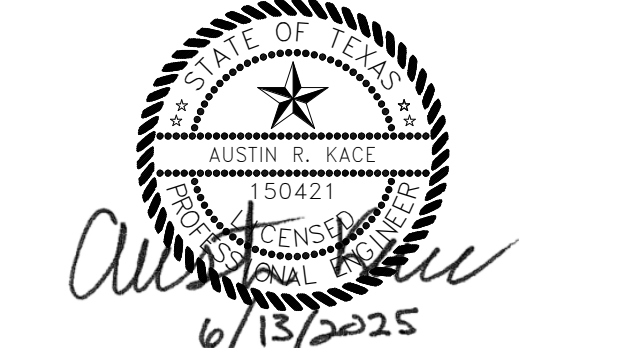
HALFF
1201 North Bowser Road
Richardson, Texas 75081-2275

ENTERA
Your total branding solution
5900 Venture Crossing Blvd, Panama City, FL 32409

Date	Description
11.20.2024	Issue for Permit
1 02.14.2025	City Comments Revision 1
3 06.13.2025	City Comments Revision 3



Seal / Signature



Project Name **FM WHATABURGER**
PT22M
FLOWER MOUND, TEXAS
3185 LONG PRAIRIE RD, LOT 1, BLOCK A,
EMBREE 2489 SUBDIVISION
Project Number
122.1024.000

Description
MECHANICAL DETAILS

Scale
N.T.S.

M5.1



Gensler

229 E. Houston St. Suite 200
San Antonio, TX 78205
United States
Tel 210.222.8059

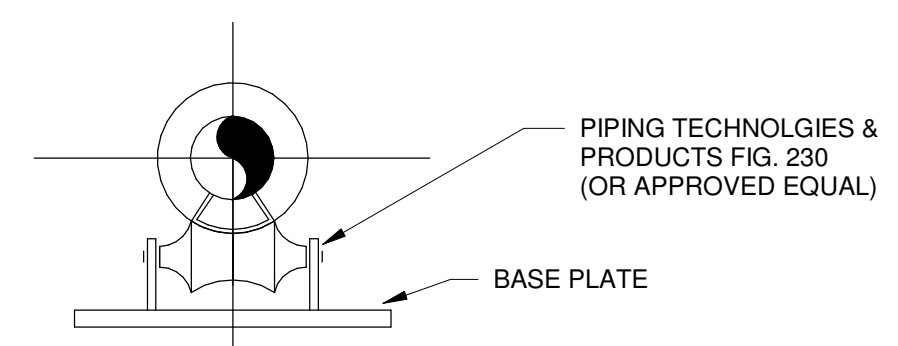
wallace design collective
wallace design collective, pc
structural, civil, landscape, survey
1231 North Martin Luther King Jr. Boulevard
Dallas, Oklahoma 75203
978.584.5858 - 800.364.5858

CLEARY ZIMMERMANN
ENGINEERS
Firm No. F-9317 | ClearyZimmermann.com
1344 G. Flores, Ste. 100, San Antonio, TX 78204

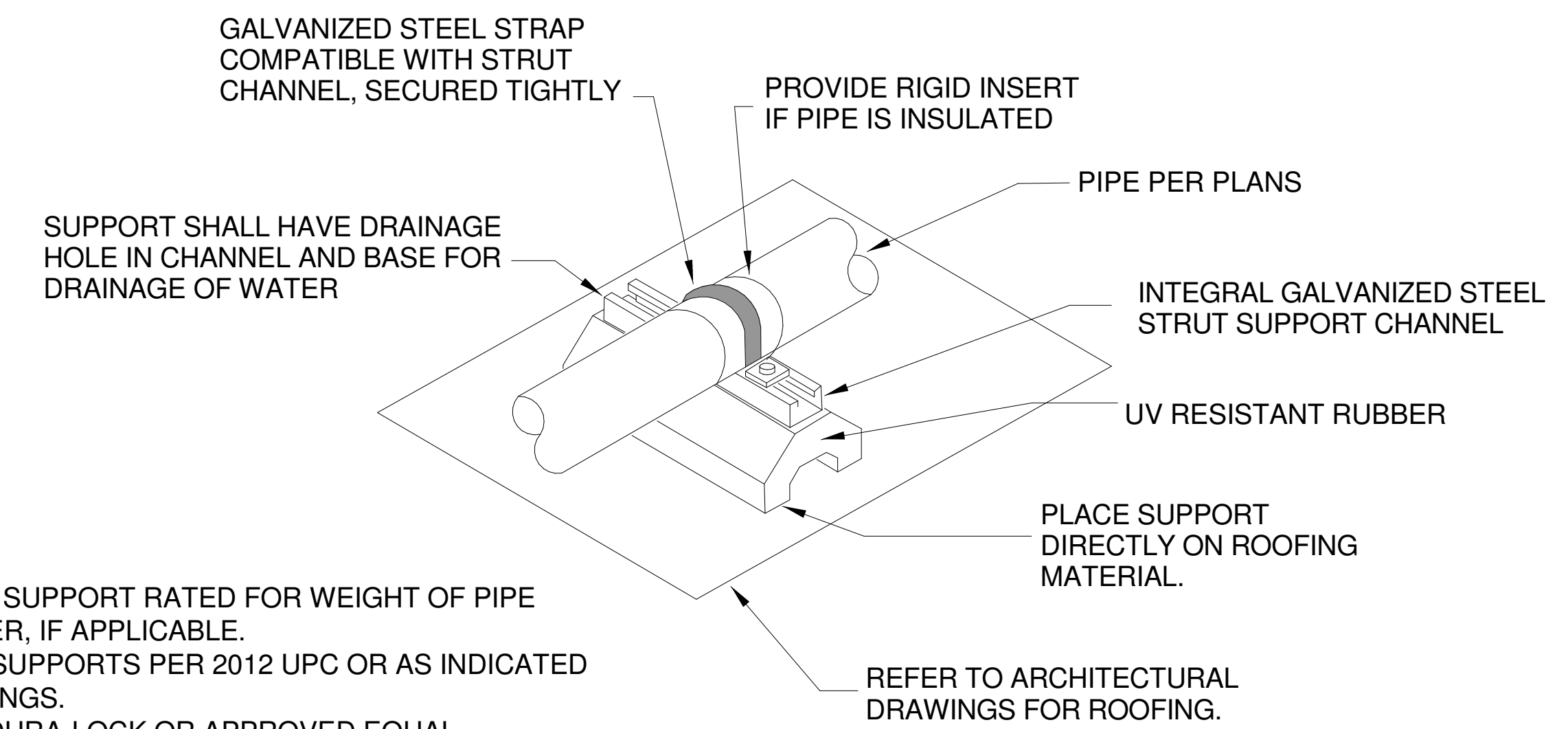
HALFF
1201 North Bowser Road
Richardson, Texas 75081-2275

ENTERA
Your total branding solution
5900 Venture Crossing Blvd, Panama City, FL 32409

Date	Description
11.20.2024	Issue for Permit
02.14.2025	City Comments Revision 1
06.13.2025	City Comments Revision 3

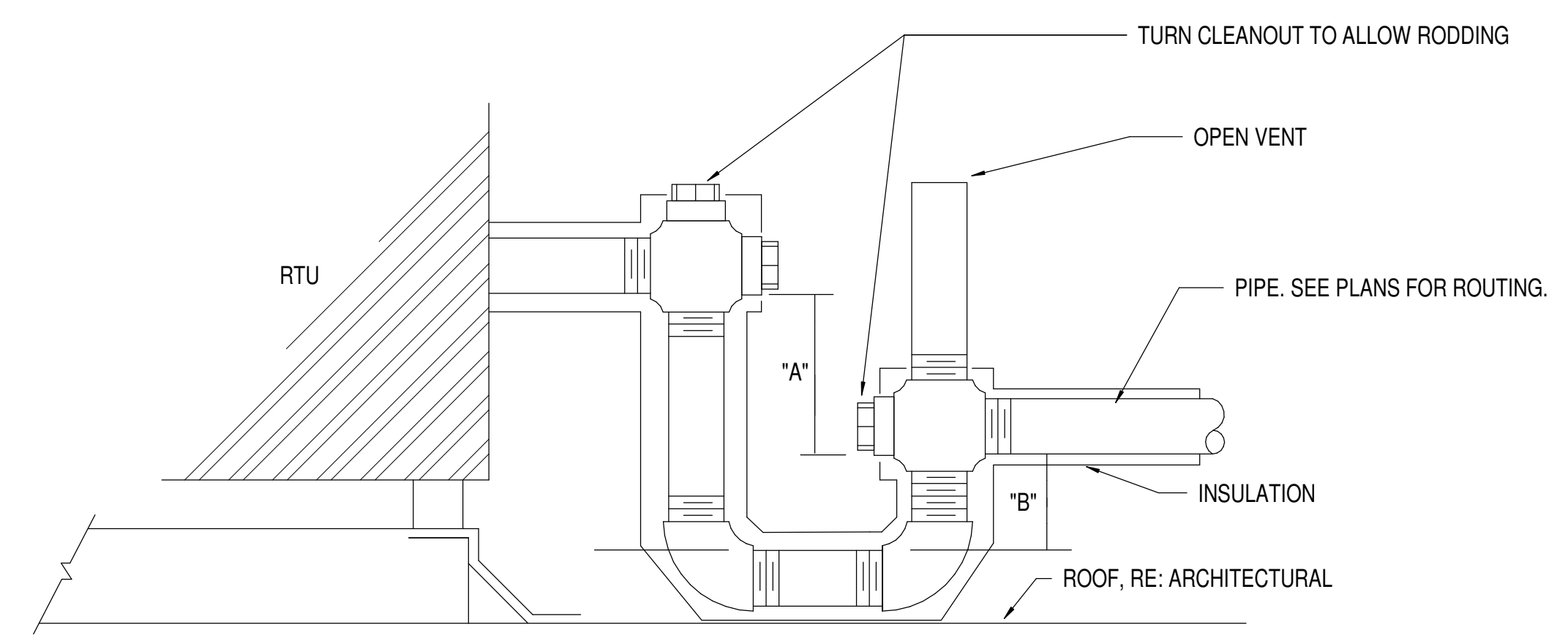


A4 PIPE SUPPORT ROLLER STAND
N.T.S.

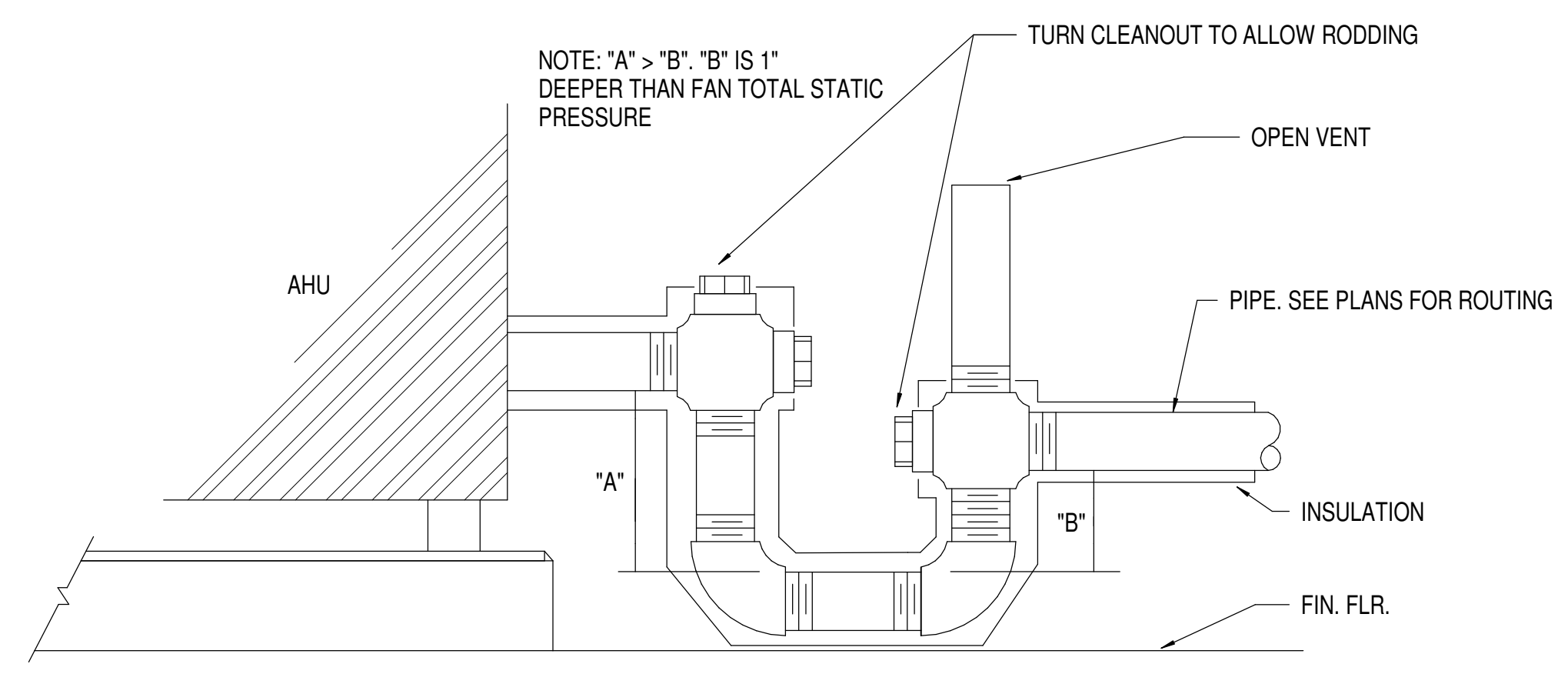


NOTES:
1. SELECT SUPPORT RATED FOR WEIGHT OF PIPE AND WATER, IF APPLICABLE.
2. SPACE SUPPORTS PER 2012 UPC OR AS INDICATED ON DRAWINGS.
3. B-LINE DURA-LOCK OR APPROVED EQUAL

A5 DURA-BLOCK SUPPORT
N.T.S.

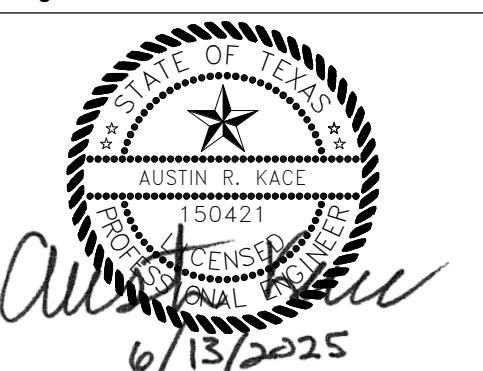


A1 DRAW-THRU RTU CONDENSATE DRAIN
N.T.S.
NOTE: "A" = TSP+1
"B" = 1/2TSP+1



A3 BLOW-THRU AHU CONDENSATE DRAIN
N.T.S.
NOTE: "A" > "B". "B" IS 1" DEEPER THAN FAN TOTAL STATIC PRESSURE

Seal / Signature



Project Name: **FM WHATABURGER**
PT22M
FLOWER MOUND, TEXAS
3185 LONG PRAIRIE RD., LOT 1, BLOCK A,
EMBREE 2489 SUBDIVISION
Project Number:
122.1024.000

Description:
MECHANICAL DETAILS

Scale:
N.T.S.

M5.2



ROOFTOP UNIT SCHEDULE		
MARK	RTU-1	RTU-2
SERVES	KITCHEN	DINING
TOTAL AIR (CFM)	3850	2050
OUTSIDE AIR (CFM)	2460	1550
APPROX. EXT S.P. ("WG) *	0.75	0.50
FAN MOTOR (MIN. HP)	3.00	2.00
AMBIENT TEMP. (F)	105	105
COOLING SECTION		
TYPE	DX	DX
REFRIG. TYPE	R-454b	R-454b
FAN RPM	928	1184
ENT. AIR TEMP (DB/WB)	94.2 / 72.6	97.7 / 74.3
LEA. AIR TEMP (DB/WB)	53.1 / 53.1	50.6 / 50.5
OUTPUT-TOTAL (MBh)	220.3	124.1
OUTPUT-SENS (MBh)	123.0	93.4
HEATING SECTION		
TYPE	GAS	GAS
STAGES	3:1	3:1
ENT. AIR TEMP (DB)	43.5	35.6
LEA. AIR TEMP (DB)	86.6	85.0
INPUT (MBh)	270.0	195.0
OUTPUT (MIN. MBH)	218.7	156.0
ELECTRICAL		
UNIT VOLTS / PHASE	208/3	208/3
MCA	99	83
MOCP	125	100
WEIGHT	2534	1935
FILTER	MERV 8	MERV 8
REFERENCE	AAON	AAON
MODEL NO.	RN-020-8-0-GB04-349	RN-013-8-0-GB04-3F9
NOTES	1-13	1-13

- NOTES:
- PROVIDE WITH PREMIUM EFFICIENCY MOTORS IN ACCORDANCE WITH NEMA MG-1.
 - PROVIDE WITH SUPPLY AND RETURN SMOKE DETECTORS TO SHUT DOWN UNIT UPON SMOKE DETECTION.
 - PROVIDE TERMINAL STRIP FOR FIELD INSTALLED CONTROLS.
 - UNITS TO BE 2" DOUBLE WALL R-13 CONSTRUCTION WITH 2500 HOUR SALT SPRAY RESISTANT PAINT.
 - UNIT TO HAVE MODULATING HOT GAS REHEAT AND MODULATE HEAT CONTROL.
 - MECHANICAL CONTRACTOR RESPONSIBLE FOR INSTALLING (2) FACTORY PROVIDED SUPPLY AIR TEMPERATURE SENSORS.
 - PROVIDEFACTORY INSTALLED HAIL GUARDS.
 - PROVIDE 6 ROW DX COIL AND STAINLESS STEEL DRAIN PAN
 - PROVIDE ULTRA LOW LEAKAGE ECONOMIZER WITH BAROMETRIC RELIEF DAMPER, AND FAULT DETECTION AND DIAGNOSTIC.
 - PROVIDE FACTORY MOUNTED AND WIRED CONDENSATE FLOW SWITCH.
 - PROVIDE STAINLESS STEEL GAS HEAT EXCHANGER WITH MODULATING CONTROL.
 - PROVIDE FACTORY POWERED GFCI CONVENIENCE OUTLET AND NONFUSED DISCONNECT.
 - PROVIDE 14 INCH INSULATED, SOLID BOTTOM CURBED FOR ROOF PITCH. MECHANICAL CONTRACTOR TO FIELD CUT SUPPLY AND RETURN OPENINGS AS REQUIRED.
 - AAON UNITS PROVIDED BY CONTRATOR. FACTORY STARTUP IS INCLUDED. CONTACT Aaron Humphries @ 210-954-6657 OR aaron.humphries@texasairsystems.com TO COORDINATE STARTUP.

FLEX DUCT SCHEDULE	
CFM RANGE	SIZE (DIAMETER) *
< 50	5
51 - 100	6
101 - 250	8
251 - 400	10
401 - 650	12
651 - 900	14
901 - 1300	16
1301 - 1800	18
1801 - 2300	20

* ALL FLEX DUCT SHALL BE SIZED IN ACCORDANCE W/ FLEX DUCT SCHEDULE. PROVIDE RIGID REDUCER AT NECK OF AIR DEVICE, VAV INLET DUCT, ETC. TO TRANSITION FROM FLEX DUCT SIZE TO DIFFUSER INLET AND/OR EQUIPMENT CONNECTION SIZE. FLEX DUCT NOT TO EXCEED 5ft.

EXHAUST FAN SCHEDULE

TAG	TYPE	MANUFACTURER	MODEL	AIR FLOW	TSP (IN W.G.)	RPM	BHP	HP	DRIVE TYPE	VOLTAGE	PHASE	WEIGHT (LBS.)	NOTES
EF-1	ROOF-MOUNTED CENTRIFUGAL DOWNBLAST	GREENHECK	G-080-VG	300 CFM	0.50	1680	0.07	0.10	DIRECT	120	1	44	1,2
KEF-1	ROOF-MOUNTED CENTRIFUGAL UPBLAST	GREENHECK	CUE-140-VG	1995 CFM	1.00	1517	0.66	0.75	DIRECT	208	1	119	2,3,4,6
KEF-2	ROOF-MOUNTED CENTRIFUGAL UPBLAST	GREENHECK	CUE-120-VG	1216 CFM	0.75	1415	0.26	0.50	DIRECT	208	1	96	2,3,5,6

- NOTES:
- PROVIDE INSULATED 12" ROOF CURB.
 - PROVIDE WITH INTEGRAL DISCONNECT SWITCH.
 - PROVIDE GREASE BOX.
 - PROVIDE INSULATED AND VENTED 26" SQUARE ROOF CURB.
 - PROVIDE INSULATED AND VENTED 22" SQUARE ROOF CURB.
 - PROVIDE HINGED ACCESS KIT.

AIR DEVICE SCHEDULE

TAG	MANUFACTURER	MODEL	FACE SIZE	NECK SIZE (IN.)	MAX NC	PATTERN	MOUNTING	SLOT LENGTH	SLOT WIDTH	SLOT QTY	SYSTEM CLASSIFICATION	COMMENTS
A3	TITUS	TMS	24 X 24	6	30	4-WAY	LAY-IN	-	-	-	SUPPLY AIR	1
A4	TITUS	TMS	24 X 24	8	30	4-WAY	LAY-IN	-	-	-	SUPPLY AIR	-
A5	TITUS	TMS	24 X 24	10	30	4-WAY	LAY-IN	<varies>	<varies>	<varies>	SUPPLY AIR	1
A6	TITUS	TMS	24 X 24	12	30	4-WAY	LAY-IN	-	-	-	SUPPLY AIR	1
B3	TITUS	TMS	24 X 24	6	30	4-WAY	FLANGE	-	-	-	SUPPLY AIR	1,2
C8	TITUS	350FLF1	24 X 24	18 X 18	30	4-WAY	LAY-IN	-	-	-	RETURN AIR	-
F1	TITUS	50F	12 X 12	6 X 6	30	4-WAY	FLANGE	-	-	-	EXHAUST AIR	2
L1	TITUS	FL-15-JT	SEE PLANS	-	30	1-WAY	FLANGE	CONTINUOUS	1-1/2	1	-	4
P1	TITUS	FBPI	48 X 3-1/2	8	30	-	FLANGE	60	-	-	SUPPLY AIR	3
P3	TITUS	FBPI	60 X 3-1/2	8	30	-	FLANGE	60	-	-	SUPPLY AIR	3

- NOTES:
- PROVIDE BACKPAN INSULATION.
 - PROVIDE PLASTER FRAME FOR MOUNTING IN GYP. CEILING.
 - PROVIDE INSULATED PLENUM.
 - CONTINUOUS LINEAR SLOT DIFFUSER TO BE INSTALLED IN GYP. CEILING. PROVIDE INSULATED SUPPLY AIR PLENUMS AS SCHEDULED FOR A COMPLETE SYSTEM.

KITCHEN HOOD SCHEDULE

Manufacturer	Model	Description	Exhaust Vent Diameter	Exhaust Volume
H&K DALLAS INC.	CUSTOM	87" DOUBLE SIDED GRILL HOOD	1'-4"	1994 CFM
H&K DALLAS INC.	CUSTOM	10 BASKET FRYER HOOD	1'-0"	1216 CFM

AIR BALANCE AND VENTILATION CALCULATION:

TOTAL OUTSIDE AIR INTAKE = 4010 CFM
 TOTAL GREASE HOOD EXHAUST = 3210 CFM
 TOTAL RESTROOM EXHAUST = 300 CFM
 OUTSIDE AIRFLOW - (GREASE HOOD EXHAUST AIRFLOW + RESTROOM EXHAUST AIRFLOW) = NET POSITIVE AIRFLOW
 4010 CFM - (3210 + 300) = 500 CFM

AIR CURTAIN

Mark	MANUFACTURER	MODEL	Air Volume	Motor(s) @ HP	Electrical Circuit 1 Supply Voltage	Electrical Circuit 1 Amps per Circuit	Electrical Circuit 1 Phase
AC-1	Berner Int	CLC108-1048AA	1340 CFM	1 @ 15	120 V	3 A	1



Gensler

229 E. Houston St. Suite 200
 San Antonio, TX 78205
 United States
 Tel 210.222.8059



1201 North Bowser Road
 Richardson, Texas 75081-2275

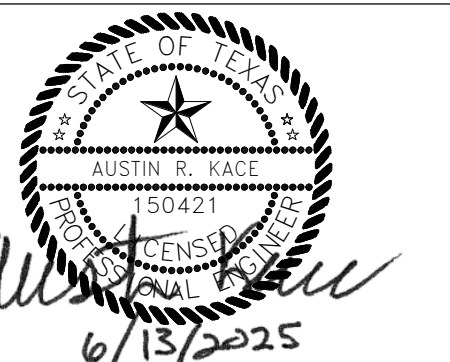


5900 Venture Crossing Blvd, Panama City, FL 32409

△ Date Description

- 11.20.2024 Issue for Permit
- 02.14.2025 City Comments Revision 1
- 06.13.2025 City Comments Revision 3

Seal / Signature



Project Name FM WHATABURGER

PT22M
 FLOWER MOUND, TEXAS
 3185 LONG PRAIRIE RD, LOT 1, BLOCK A,
 EMBREE 2489 SUBDIVISION

Project Number

122.1024.000

Description

MECHANICAL SCHEDULES

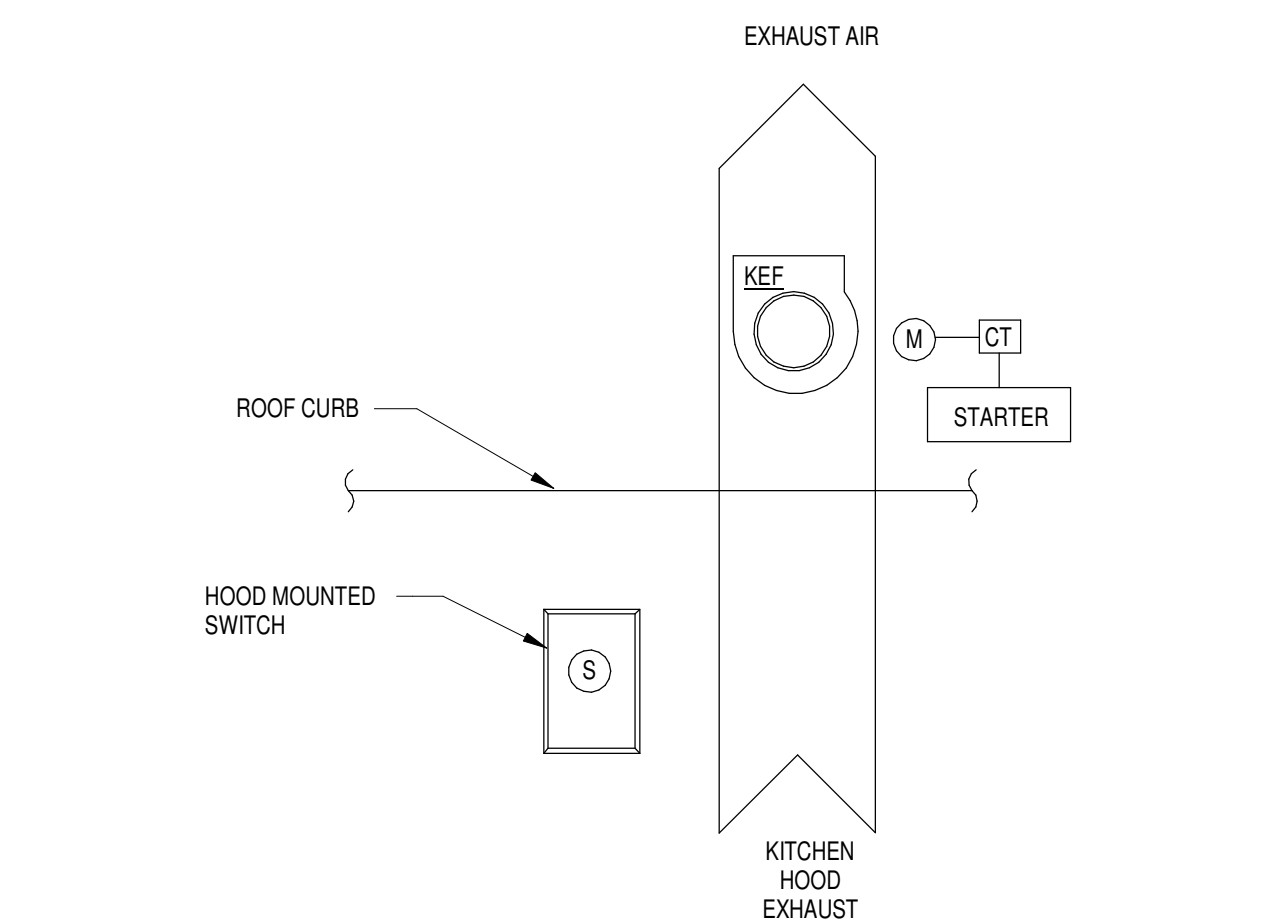
Scale

12" = 1'-0"

M6.1

CONTROL SYMBOLS

AE	ANALYZER ELEMENT	CO	CARBON MONOXIDE SENSOR
DDC	DIRECT DIGITAL CONTROL	← - -	COMMUNICATION SIGNAL
BMS	BUILDING MANAGEMENT SYSTEM	HPS	HIGH STATIC PRESSURE SENSOR
RDC	ROOFTOP UNIT DDC CONTROLLER	DA	DAMPER ACTUATOR
FACP	FIRE ALARM CONTROL PANEL	CV	CONTROL VALVE
DPI	DIFFERENTIAL PRESSURE INDICATOR	DX	DX COOLING COIL
DPS	DIFFERENTIAL PRESSURE SWITCH	HC	NATURAL GAS HEATING COIL
DPT	DIFFERENTIAL PRESSURE TRANSMITTER	HGR	HOT GAS REHEAT
EDH	ELECTRIC DUCT HEATER	SF	SUPPLY AIR FAN
EF	EXHAUST FAN		
FE	FLOW ELEMENT		
FLTR	FILTER		
FS	FLOW SWITCH		
H	HUMIDISTAT		
HL	HIGH TEMPERATURE LIMIT SWITCH		
M	MOTOR		
PCV	PRESSURE CONTROL VALVE		
PT	PRESSURE TRANSMITTER		
SMK	SMOKE DETECTOR		
T	TEMPERATURE SENSOR		
TCV	TEMPERATURE CONTROL VALVE		
TSL	LOW LIMIT THERMOSTAT (FREEZESTAT)		
TT	TEMPERATURE TRANSMITTER		
VFD	VARIABLE FREQUENCY DRIVE		
STARTER	MOTOR STARTER (PROVIDE CONTROL RELAY)		
CT	CURRENT TRANSDUCER		
OS	OCCUPANCY SENSOR		



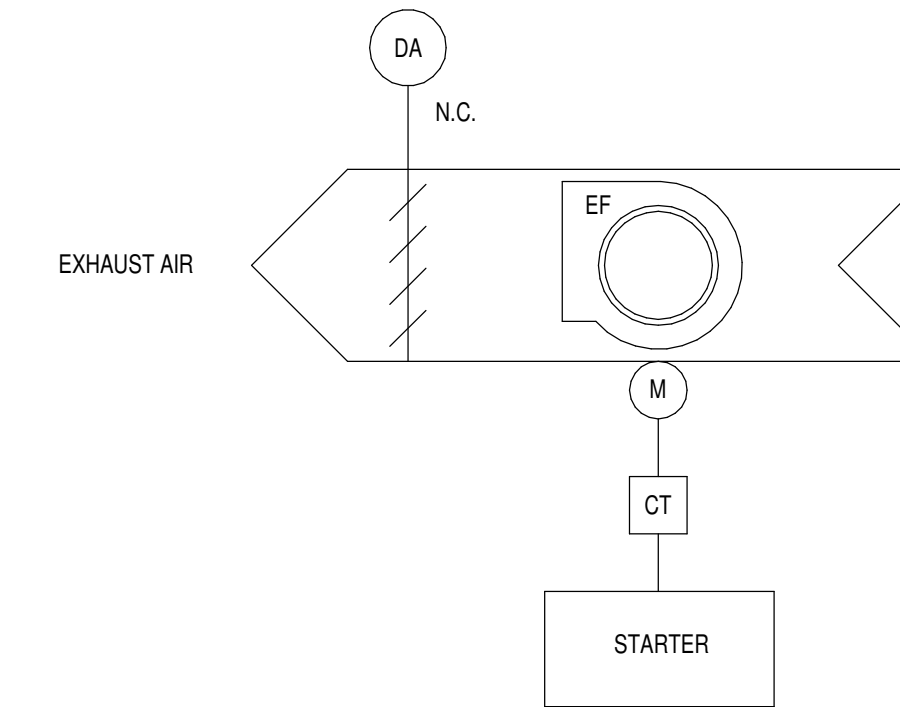
SEQUENCE OF OPERATION

OPERATING CONDITIONS - CONTINUOUS 24/7:
THE KITCHEN HOOD EXHAUST FAN SHALL RUN CONTINUOUSLY WHEN THE KITCHEN HOOD MOUNTED SWITCH IS ON.

INTEGRATED ANSUL FIRE SUPPRESSION SYSTEM:
UPON ACTIVATION OF THE INTEGRATED ANSUL FIRE SUPPRESSION SYSTEM DURING NORMAL KITCHEN OPERATION, THE KITCHEN HOOD EXHAUST FAN SHALL REMAIN ENERGIZED.

FIRE/SMOKE CONTROL:
UPON SENSING DUCT SMOKE, THE KITCHEN EXHAUST FAN SHALL BE CYCLED OFF. FAN STATUS SHALL BE REPORTED TO THE BAS.

C2 KITCHEN HOOD EXHAUST FAN CONTROL DIAGRAM
N.T.S.

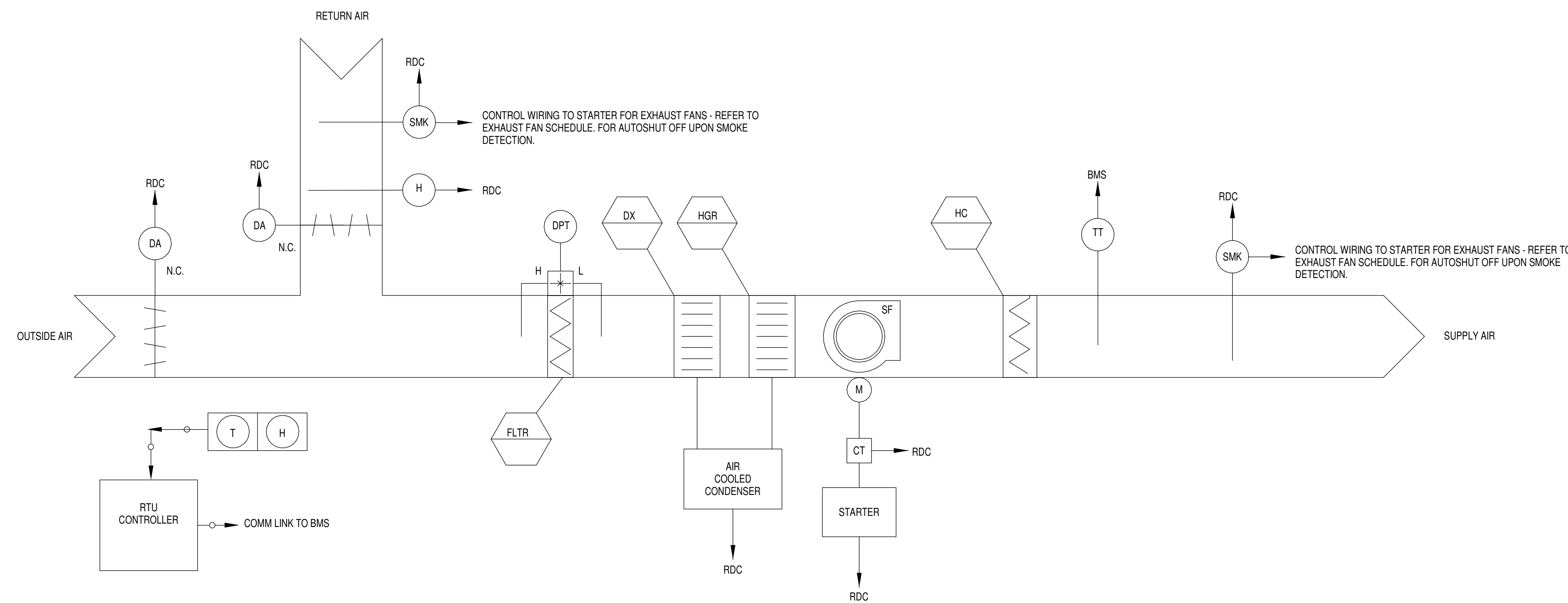


SEQUENCE OF OPERATION

OPERATING CONDITIONS:
THE GENERAL EXHAUST FAN SHALL BE INTERLOCKED WITH THE RESTROOM OCCUPANCY SENSORS. THE EXHAUST FAN SHUTOFF DAMPER SHALL BE INTERLOCKED WITH THE EXHAUST FAN TO OPEN WHEN THE FAN IS ENERGIZED AND CLOSE WHEN THE FAN IS DE-ENERGIZED.

ALARMS:
ALARMS SHALL BE PROVIDED AS FOLLOWS:
1. FAN FAILURE: FAN COMMANDED ON BUT STATUS IS OFF.
2. FAN IN HAND: FAN COMMANDED OFF BUT STATUS IS ON.
3. FAN BELT FAILURE: MOTOR AMPERAGE READS ZERO AS MEASURED BY CURRENT TRANSDUCER.

C3 GENERAL EXHAUST FAN CONTROL DIAGRAM
N.T.S.



SEQUENCE OF OPERATION

OPERATING CONDITION - CONTINUOUS 24/7

THE PILOT RTU CONTROLLER (RDC) SHALL PERFORM ALL CONTROL, SAFETY AND INTERLOCKS AS DESCRIBED IN THE SEQUENCE OF OPERATION. THE BMS SHALL MONITOR THE RTU DDC CONTROLLER VIA BMS PROTOCOL COMMUNICATION AND/OR COMBINATION OF DISCRETE INPUT/OUTPUT POINTS. THE BMS SHALL OPERATE THE UNIT CONTINUOUS 24/7. WHEN THE UNIT IS DE-ENERGIZED BY THE BMS, THE FAN SHALL SHUT DOWN, THE OA DAMPER SHALL CLOSE. THE REFRIGERATION SYSTEM SHALL ALSO BE DE-ENERGIZED AND THE HEATING SYSTEM LOCKED OUT OF HEATING MODE.

TEMPERATURE CONTROL
OCCUPIED MODE - THE BMS WILL MAINTAIN THE FOLLOWING SPACE TEMPERATURE SETPOINTS:
• COOLING: 75°F (ADJUSTABLE)
• HEATING: 70°F (ADJUSTABLE)

HUMIDITY CONTROL
IF THE RELATIVE HUMIDITY OF THE RETURN AIR EXCEEDS 60% (ADJUSTABLE) AND THERE IS NO CALL FOR COOLING IN THE SPACE, THE RDC SHALL ENABLE DEHUMIDIFICATION MODE OF THE RTU BASED ON ITS OWN INTERNAL CONTROLS UTILIZING HOT GAS REHEAT.

ECONOMIZER OPERATION
BASED ON THE RTU INTERNAL CONTROLS, THE RDC SHALL VARY THE OUTSIDE AIR DAMPER POSITION, BASED ON CALL FOR COOLING IN THE SPACE. THERE SHALL BE ONE FAN SPEED. THE RDC SHALL LOAD AND UNLOAD COMPRESSORS BASED ON THE UNIT INTERNAL CONTROLS TO CONDITION OR DEHUMIDIFY THE SPACE AS NEEDED.

SEQUENCE OF OPERATION (CONTINUED)

THE BMS SHALL BE PROGRAMMED SO THAT THE HEATING AND COOLING SYSTEMS SHALL NEVER OPERATE SIMULTANEOUSLY.

UNIT SHUTDOWN:
UNIT SHALL BE DE-ENERGIZED UPON DETECTION OF SMOKE IN DUCT OR BUILDING FIRE ALARM.

ALARMS
THE BMS SHALL MONITOR ALL SAFETIES ON THE REFRIGERATION SYSTEM AND THE HEATING SYSTEM THROUGH THE RDC COMMUNICATION PROTOCOL. ALL ABNORMAL CONDITIONS SHALL BE ALARMED AT THE BMS.

A. **FILTERS**
THE RDC SHALL MONITOR THE STATIC PRESSURE DROP ACROSS THE FILTER BANK AND ALARM ON HIGH STATIC PRESSURE DROP. A DIFFERENTIAL PRESSURE SWITCH ACROSS THE FILTER SHALL INITIATE FILTER ALARM WHEN THE PRESSURE DROP ACROSS THE FILTER REACHES THE SETPOINT OF 1.0 INCHES W.C. (ADJUSTABLE).

B. **FIRE/SMOKE CONTROL**
UPON ACTIVATION OF A DUCT SMOKE DETECTOR, THE BMS SHALL RECEIVE AN ALARM.

C. **GENERAL ALARM**
ANY TROUBLE ALARM OR FAULT WITHIN THE UNIT ONBOARD CONTROLS WILL GENERATE A GENERAL ALARM TO THE BMS.

A1 PACKAGED ROOFTOP UNIT CONTROLS DIAGRAM
N.T.S.



Gensler

229 E. Houston St. Tel 210.222.8059
Suite 200
San Antonio, TX 78205
United States

wallace design collective
wallace design collective, pc
structural, civil, landscape, survey
123 north martin luther king jr boulevard
texas 78204-3803
978.584.5858-800.364.5858

CLEARY ZIMMERMANN ENGINEERS
Firm No. F-9317 | ClearyZimmermann.com
1344 G. Flores, Ste. 100, San Antonio, TX 78204

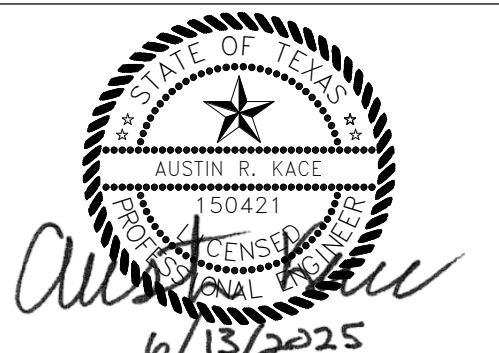
HALFF
1201 North Bowser Road
Richardson, Texas 75081-2275

ENTERA
Your total branding solution

5900 Venture Crossing Blvd, Panama City, FL 32409

Date	Description
11.20.2024	Issue for Permit
02.14.2025	City Comments Revision 1
06.13.2025	City Comments Revision 3

Seal / Signature



Project Name **FM WHATABURGER**

PT22M
FLOWER MOUND, TEXAS
3185 LONG PRAIRIE RD, LOT 1, BLOCK A,
EMBREE 2489 SUBDIVISION

Project Number

122.1024.000

Description
MECHANICAL CONTROLS

Scale

As indicated

M7.1





Gensler

229 E. Houston St. Suite 200
San Antonio, TX 78205
United States

wallace design collective
wallace design collective, pc
123 North Martin Luther King Jr. Boulevard
Dallas, Texas 75203
972.584.5858 - 800.364.5858

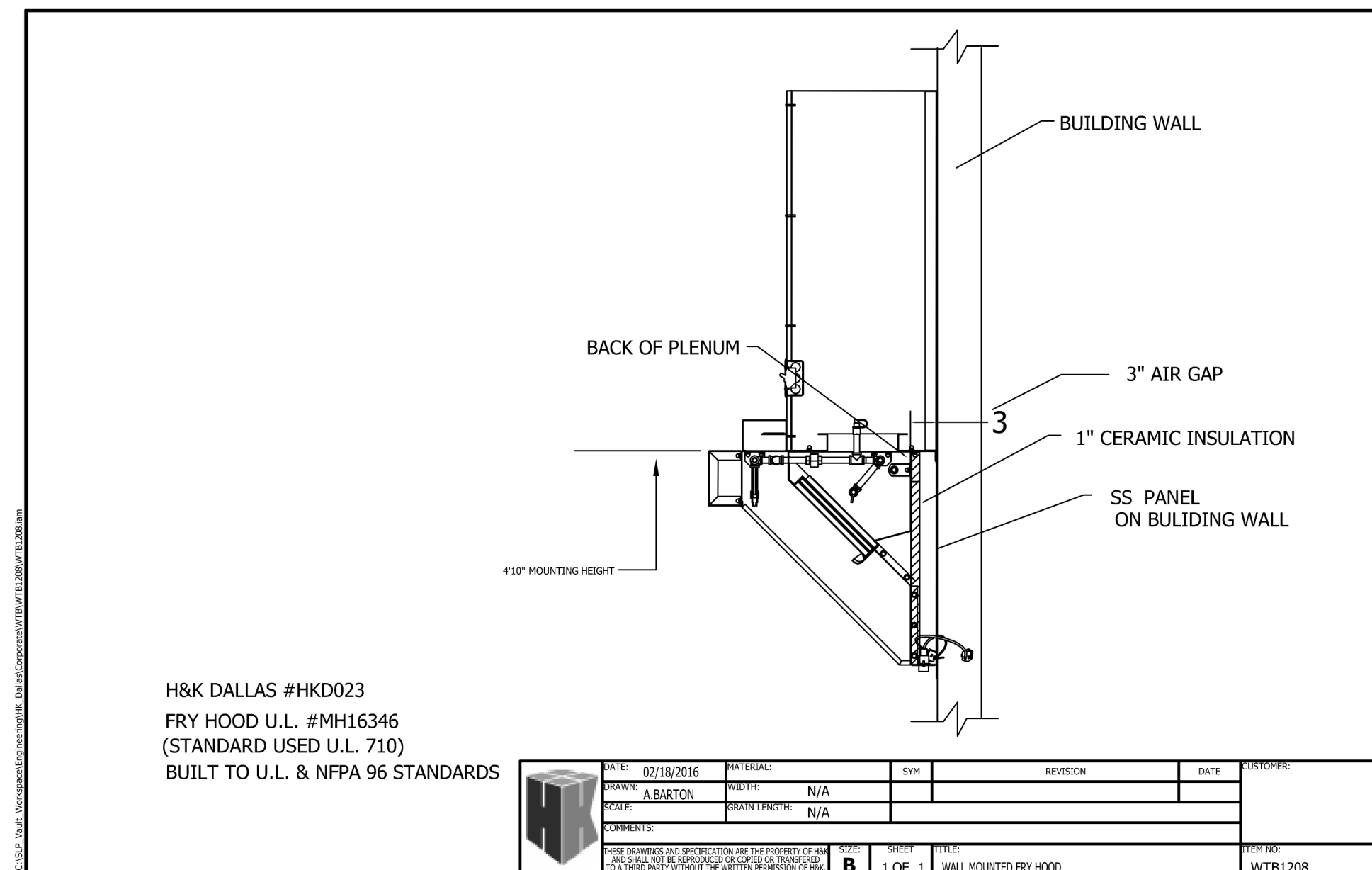
CLEARY ZIMMERMANN
ENGINEERS
Firm No. F-9317 | ClearZimmermann.com
1344 G. Street, Ste. 101, San Antonio, TX 78204

HALFF
1201 North Bowser Road
Richardson, Texas 75081-2275

ENTERA
Your total branding solution

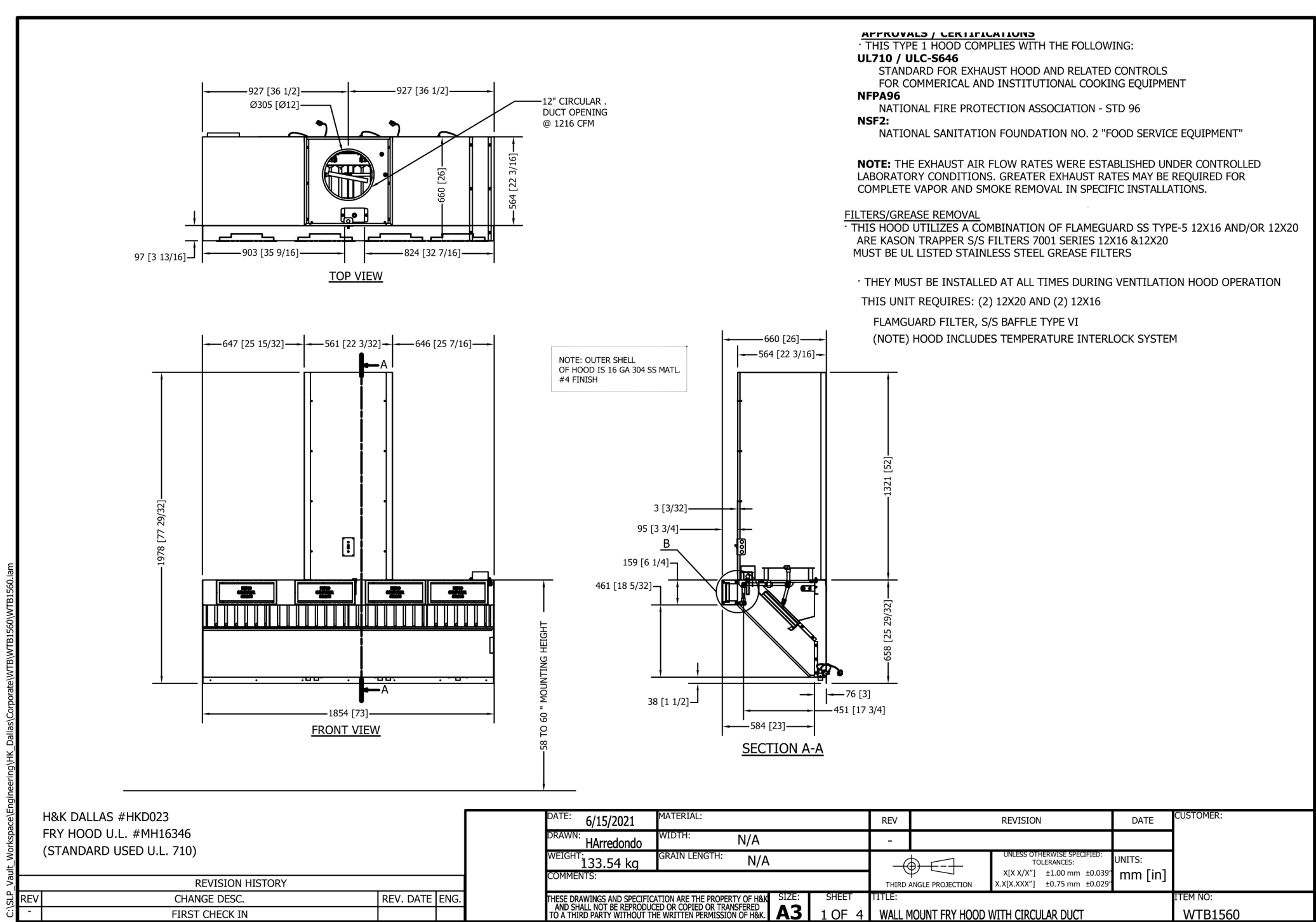
5900 Venture Crossing Blvd, Panama City, FL 32409

Date	Description
11.20.2024	Issue for Permit
1 02.14.2025	City Comments Revision 1
2 05.16.2025	City Comments Revision 2
3 06.13.2025	City Comments Revision 3



H&K DALLAS #HKD023
FRY HOOD U.L. #MH16346
(STANDARD USED U.L. 710)
BUILT TO U.L. & NFPA 96 STANDARDS

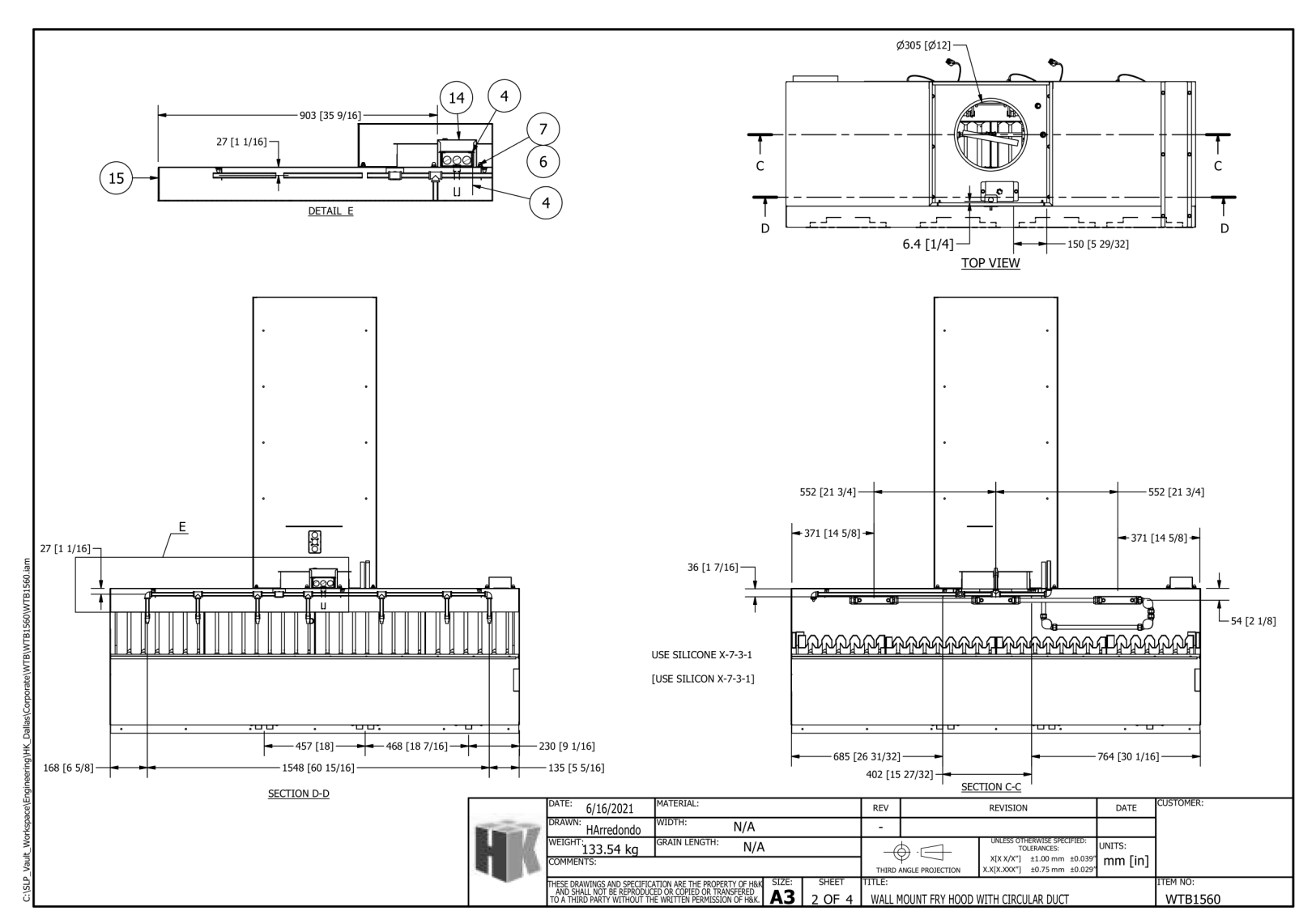
DATE	DESCRIPTION	BY	REVISION	DATE	CUSTOMER
02/18/2016	ISSUED FOR PERMIT	A.BARTON			



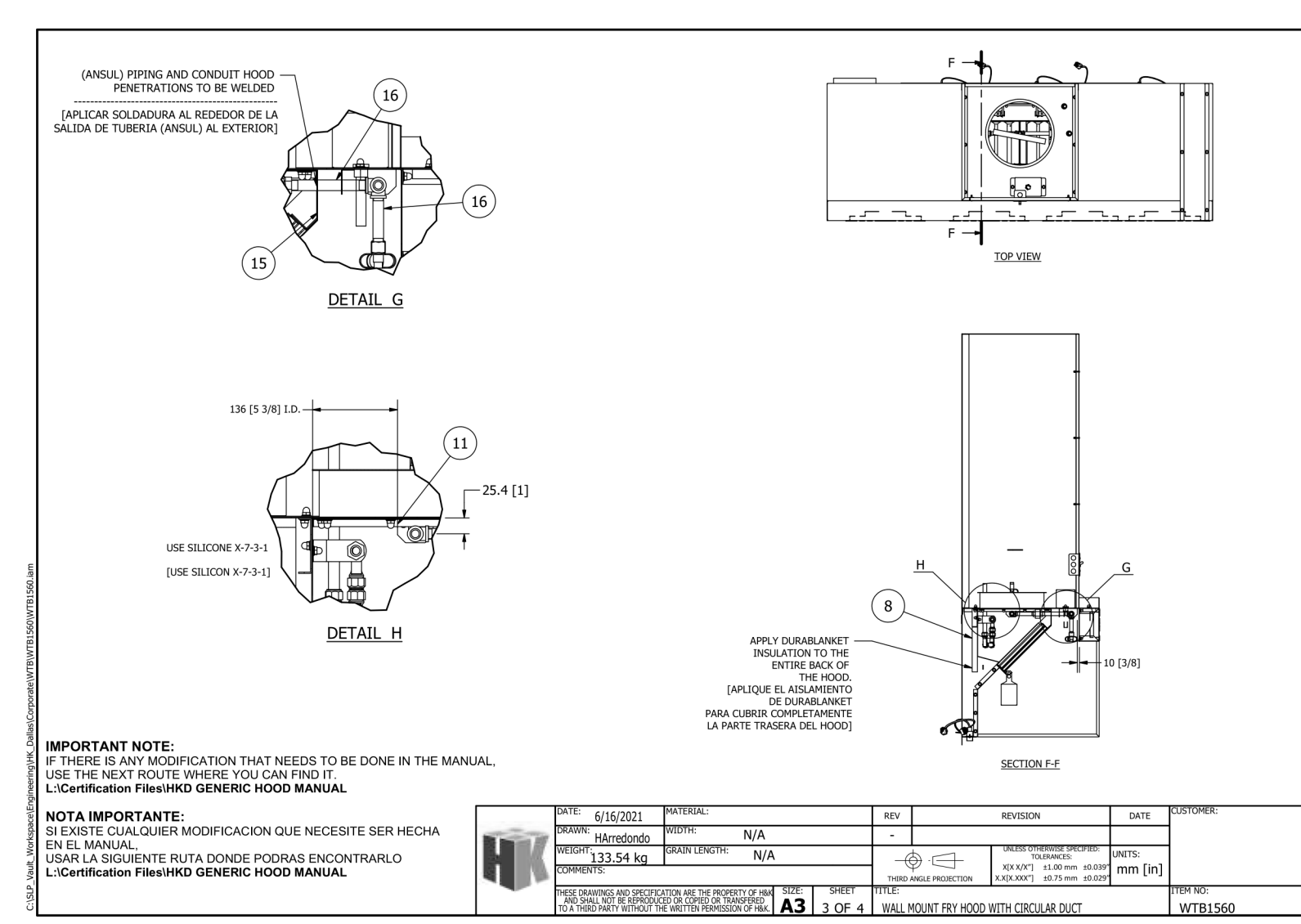
REFERENCES & STANDARDS
THIS TYPE 3 HOOD COMPLIES WITH THE FOLLOWING:
UL710 / UL-5646
STANDARD FOR EXHAUST HOOD AND RELATED CONTROLS FOR COMMERCIAL AND INSTITUTIONAL COOKING EQUIPMENT
NFPA96
NATIONAL FIRE PROTECTION ASSOCIATION - STD 96
NSF2
NATIONAL SANITATION FOUNDATION NO. 2 "FOOD SERVICE EQUIPMENT"
NOTE: THE EXHAUST AIR FLOW RATES WERE ESTABLISHED UNDER CONTROLLED LABORATORY CONDITIONS. GREATER EXHAUST RATES MAY BE REQUIRED FOR COMPLETE VAPOR AND SMOKE REMOVAL IN SPECIFIC INSTALLATIONS.
FILTERS/GREASE REMOVAL
THIS HOOD UTILIZES A COMBINATION OF FLAMEGUARD SS TYPE S 12X16 AND/OR 12X20 ARE KASON TRAPPER S/S FILTERS "DOD" SERIES 12X16 & 12X20 MUST BE UL LISTED STAINLESS STEEL GREASE FILTERS
* THEY MUST BE INSTALLED AT ALL TIMES DURING VENTILATION HOOD OPERATION
THIS UNIT REQUIRES: (2) 12X20 AND (2) 12X16 FLAMEGUARD FILTER, S/S BAFFLE TYPE VI
(NOTE) HOOD INCLUDES TEMPERATURE INTERLOCK SYSTEM

DATE	DESCRIPTION	BY	REVISION	DATE	CUSTOMER
6/15/2021	ISSUED FOR PERMIT	A.BARTON			

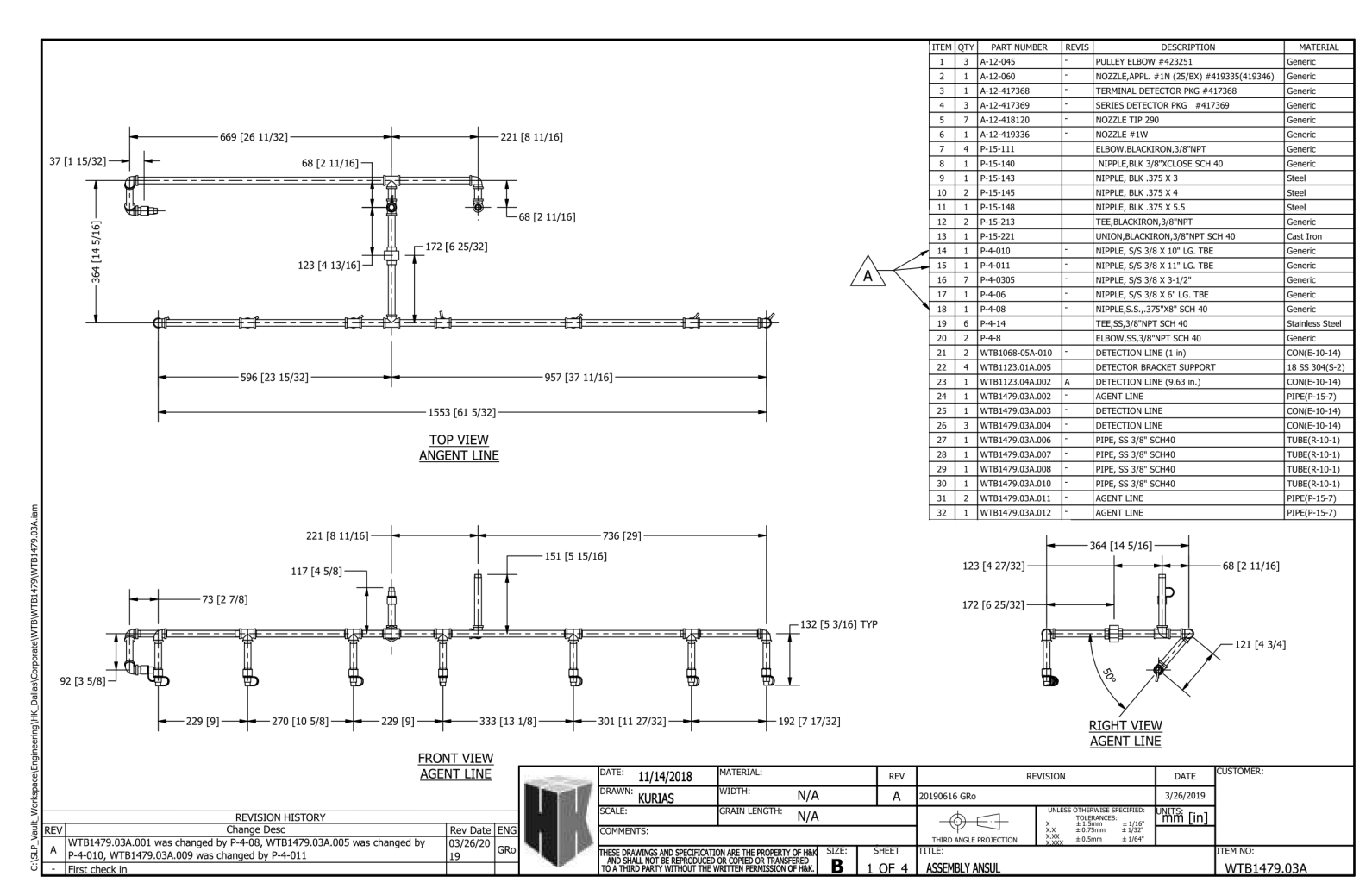
NOTE: KITCHEN VENDOR DRAWINGS FOR REFERENCE ONLY.



DATE	DESCRIPTION	BY	REVISION	DATE	CUSTOMER
6/16/2021	ISSUED FOR PERMIT	A.BARTON			



DATE	DESCRIPTION	BY	REVISION	DATE	CUSTOMER
6/16/2021	ISSUED FOR PERMIT	A.BARTON			



DATE	DESCRIPTION	BY	REVISION	DATE	CUSTOMER
6/16/2021	ISSUED FOR PERMIT	A.BARTON			

6/10/2025 3:10:50 PM Autodesk Docs://22.0088.510 - WB - Flower Mount PTX22M/LOWER MOUND TX PT22M_MECH_R21.rvt



M8.1



NOTE: KITCHEN VENDOR DRAWINGS FOR REFERENCE ONLY.

ITEM NO.	QTY	PART NUMBER	REV	DESCRIPTION	MATERIAL
1	1	A-12-006L	-	SWITCH, DUAL SWAP ACTION #42387N WITH LEADS	Generic
2	2	A-12-045	-	1 GAL. TANKSHELL W/ADAPTOR #42062	Generic
3	4	A-12-045	-	FUSIBLE LINK 1/8" DEG. #415779	Generic
4	3	A-12-045	-	VALVEY ELBOW #42321	Generic
5	1	A-12-045	-	HOSE HOOP (3" STAINLESS STEEL)	Generic
6	1	A-12-045	-	HOSE GARMENT TAPKAGE #42811	Generic
7	1	A-12-045	-	HOSE HOOP (3" STAINLESS STEEL)	Generic
8	1	A-12-045	-	HOSE HOOP (3" STAINLESS STEEL)	Generic
9	2	E-8-64	-	CONNECTOR, 1/2 STR. R/FT #1C061	Generic

DATE	REVISION	BY	DESCRIPTION
06/09/2022	1	GO/MSD	ISSUED FOR CONSTRUCTION

NOTE: 275 CFMS PER LINEAR FOOT INCLUDES BOTH SIDES MINIMUM REQD. 1994 CFMS

APPROVALS / CERTIFICATIONS
 THIS HOOD TYPE 1 HOOD COMPLIES WITH THE FOLLOWING:
 STANDARD FOR EXHAUST HOODS AND RELATED CONTROLS FOR COMMERCIAL AND INSTITUTIONAL COOKING EQUIPMENT
UL710 / ULC-5646
NFPA NATIONAL FIRE PROTECTION ASSOCIATION - STD 96
NSF NATIONAL SANITATION FOUNDATION NO. 2 "FOOD SERVICE EQUIPMENT"
NOTE: THE EXHAUST AIR FLOW RATES WERE ESTABLISHED UNDER CONTROLLED LABORATORY CONDITIONS. GREATER EXHAUST RATES MAY BE REQUIRED FOR COMPLETE SMOKE AND OIL REMOVAL IN SPECIFIC INSTALLATIONS.

FILTERS/GREASE REMOVAL
 THIS HOOD UTILIZES A COMBINATION OF FLAMEGUARD SS TYPE-6 12X16 AND/OR 12X20 ASE MASON TRAPPER S/S FILTERS 7001 SERIES 12X16 8X12X20 MUST BE UL LISTED STAINLESS STEEL GREASE FILTERS
 THEY MUST BE INSTALLED AT ALL TIMES DURING VENTILATION HOOD OPERATION
 THIS UNIT REQUIRES FILTERS (6)
 FLAMEGUARD FILTER, S/S BAFFLE TYPE VI (6) 12X20
 (NOTE) HOOD INCLUDES TEMPERATURE INTERLOCK SYSTEM

NOTE: CENTER SHELL OF HOOD IS 16 GA 304 SS MATL. #4 FROST

DATE	MATERIAL	REV	REVISION	DATE	DESCRIPTION
8/11/2022	GO/MSD	B	20230019 FR	1/10/2023	

HWK DALLAS #HK0027
 CLEAR SHELL HOOD U.L. #RH16346
 (STANDARD USED U.L. 710)

UL LISTED #MH16346

DATE	MATERIAL	REV	REVISION	DATE	DESCRIPTION
06/09/2022	GO/MSD	B	20230019 FR	1/10/2023	

ITEM NO. 1 QTY 1 PART NUMBER A-12-006L REV - DESCRIPTION SWITCH, DUAL SWAP ACTION #42387N WITH LEADS MATERIAL Generic

ITEM NO. 2 QTY 2 PART NUMBER A-12-045 REV - DESCRIPTION 1 GAL. TANKSHELL W/ADAPTOR #42062 MATERIAL Generic

ITEM NO. 3 QTY 4 PART NUMBER A-12-045 REV - DESCRIPTION FUSIBLE LINK 1/8" DEG. #415779 MATERIAL Generic

ITEM NO. 4 QTY 3 PART NUMBER A-12-045 REV - DESCRIPTION VALVEY ELBOW #42321 MATERIAL Generic

ITEM NO. 5 QTY 1 PART NUMBER A-12-045 REV - DESCRIPTION HOSE HOOP (3" STAINLESS STEEL) MATERIAL Generic

ITEM NO. 6 QTY 1 PART NUMBER A-12-045 REV - DESCRIPTION HOSE GARMENT TAPKAGE #42811 MATERIAL Generic

ITEM NO. 7 QTY 1 PART NUMBER A-12-045 REV - DESCRIPTION HOSE HOOP (3" STAINLESS STEEL) MATERIAL Generic

ITEM NO. 8 QTY 1 PART NUMBER A-12-045 REV - DESCRIPTION HOSE HOOP (3" STAINLESS STEEL) MATERIAL Generic

ITEM NO. 9 QTY 2 PART NUMBER E-8-64 REV - DESCRIPTION CONNECTOR, 1/2 STR. R/FT #1C061 MATERIAL Generic

Gensler

229 E. Houston St. Suite 200
 San Antonio, TX 78205
 United States

Tel 210.222.8059

wallace design collective
 wallace design collective, pc
 structural, civil, landscape, survey
 123 north main st. luther king jr. boulevard
 houston, texas 77002
 978.584.5858 - 800.364.5858

CLEARY ZIMMERMANN ENGINEERS
 Firm No. F-9337 | ClearyZimmermann.com
 1344 G. Street, Ste. 101, San Antonio, TX 78204

HALFF
 1201 North Bowser Road
 Richardson, Texas 75081-2275

ENTERA
 Your total branding solution
 5900 Venture Crossing Blvd, Panama City, FL 32409

Date	Description
11.20.2024	Issue for Permit
02.14.2025	City Comments Revision 1
05.16.2025	City Comments Revision 2
06.13.2025	City Comments Revision 3

metric ALL DOCUMENTATION RELATED TO THIS UNIT IS RELEASED ON METRIC SYSTEM (SIGLA LA DOCUMENTACION RELACIONADA CON ESTA UNIDAD ESTA LIBERADA EN SISTEMA METRICO)

DOUBLE SIDE GRILL HOOD SUPPLIED WITH (1) 3.0 GAL TANK

DOUBLE SIDE GRILL HOOD INCLUIDO CON (1) TANQUE DE 3.0 GAL

ITEM NO.	QTY	PART NUMBER	REV	DESCRIPTION	MATERIAL
1	1	WTB1603.5100	-	LIQUID LINE ASSEMBLY	
2	1	WTB1603.5100	-	DETECTION LINE ASSEMBLY	

DATE	MATERIAL	REV	REVISION	DATE	DESCRIPTION
06/09/2022	GO/MSD	B	20230019 FR	1/10/2023	

ITEM NO. 1 QTY 1 PART NUMBER A-12-006L REV - DESCRIPTION SWITCH, DUAL SWAP ACTION #42387N WITH LEADS MATERIAL Generic

ITEM NO. 2 QTY 2 PART NUMBER A-12-045 REV - DESCRIPTION 1 GAL. TANKSHELL W/ADAPTOR #42062 MATERIAL Generic

ITEM NO. 3 QTY 4 PART NUMBER A-12-045 REV - DESCRIPTION FUSIBLE LINK 1/8" DEG. #415779 MATERIAL Generic

ITEM NO. 4 QTY 3 PART NUMBER A-12-045 REV - DESCRIPTION VALVEY ELBOW #42321 MATERIAL Generic

ITEM NO. 5 QTY 1 PART NUMBER A-12-045 REV - DESCRIPTION HOSE HOOP (3" STAINLESS STEEL) MATERIAL Generic

ITEM NO. 6 QTY 1 PART NUMBER A-12-045 REV - DESCRIPTION HOSE GARMENT TAPKAGE #42811 MATERIAL Generic

ITEM NO. 7 QTY 1 PART NUMBER A-12-045 REV - DESCRIPTION HOSE HOOP (3" STAINLESS STEEL) MATERIAL Generic

ITEM NO. 8 QTY 1 PART NUMBER A-12-045 REV - DESCRIPTION HOSE HOOP (3" STAINLESS STEEL) MATERIAL Generic

ITEM NO. 9 QTY 2 PART NUMBER E-8-64 REV - DESCRIPTION CONNECTOR, 1/2 STR. R/FT #1C061 MATERIAL Generic

ITEM NO.	QTY	PART NUMBER	REV	DESCRIPTION	MATERIAL
1	1	A-12-013	-	1 GAL. TANKSHELL W/ADAPTOR #42062	Generic
2	6	A-12-022	-	FUSIBLE LINK, 1/8" DEG. #415779	Generic
3	2	A-12-045	-	VALVEY ELBOW #42321	Generic
4	1	A-12-045	-	HOSE HOOP (3" STAINLESS STEEL)	Generic
5	2	E-8-64	-	CONNECTOR, 1/2 STR. R/FT #1C061	Generic
6	1	A-12-045	-	HOSE GARMENT TAPKAGE #42811	Generic
7	1	A-12-045	-	HOSE HOOP (3" STAINLESS STEEL)	Generic

DATE	MATERIAL	REV	REVISION	DATE	DESCRIPTION
06/09/2022	GO/MSD	B	20230019 FR	1/10/2023	

ITEM NO. 1 QTY 1 PART NUMBER A-12-006L REV - DESCRIPTION SWITCH, DUAL SWAP ACTION #42387N WITH LEADS MATERIAL Generic

ITEM NO. 2 QTY 2 PART NUMBER A-12-045 REV - DESCRIPTION 1 GAL. TANKSHELL W/ADAPTOR #42062 MATERIAL Generic

ITEM NO. 3 QTY 4 PART NUMBER A-12-045 REV - DESCRIPTION FUSIBLE LINK 1/8" DEG. #415779 MATERIAL Generic

ITEM NO. 4 QTY 3 PART NUMBER A-12-045 REV - DESCRIPTION VALVEY ELBOW #42321 MATERIAL Generic

ITEM NO. 5 QTY 1 PART NUMBER A-12-045 REV - DESCRIPTION HOSE HOOP (3" STAINLESS STEEL) MATERIAL Generic

ITEM NO. 6 QTY 1 PART NUMBER A-12-045 REV - DESCRIPTION HOSE GARMENT TAPKAGE #42811 MATERIAL Generic

ITEM NO. 7 QTY 1 PART NUMBER A-12-045 REV - DESCRIPTION HOSE HOOP (3" STAINLESS STEEL) MATERIAL Generic

ITEM NO. 8 QTY 1 PART NUMBER A-12-045 REV - DESCRIPTION HOSE HOOP (3" STAINLESS STEEL) MATERIAL Generic

ITEM NO. 9 QTY 2 PART NUMBER E-8-64 REV - DESCRIPTION CONNECTOR, 1/2 STR. R/FT #1C061 MATERIAL Generic

Seal / Signature

Project Name: FM WHATABURGER

PT22M FLOWER MOUND, TEXAS
 3185 LONG PRAIRIE RD, LOT 1, BLOCK A,
 EMBREE 2489 SUBDIVISION

Project Number: 122.1024.000

Description: KITCHEN VENDOR DRAWINGS

Scale: 1/8" = 1'-0"



M8.2