

- SHEET NOTES:**
- AIR DEVICE LOCATED IN AACT GRID OFFSET FROM CENTER OF CORRIDOR.
  - SUPPLY AND RETURN DUCTWORK UP TO FLOOR ABOVE.
  - REFRIGERANT LINES UP TO ROOF. SIZE PER MANUFACTURERS RECOMMENDATIONS.
  - PUMPED CONDENSATE FROM AC UNIT UP TO FLOOR ABOVE.
  - COORDINATE WITH ARCHITECT TO MATCH AIR DEVICE COLOR WITH CEILING.
  - 96x30 RETURN AIR DUCT OPEN TO CEILING PLenum.
  - 30x60 RETURN AIR DUCTWORK UP TO FLOOR ABOVE.
  - 30x60 SUPPLY AIR DUCTWORK UP TO FLOOR ABOVE.

**GENERAL NOTES:**

A. ALL RETURNS ARE 11 AND EITHER 12X24 OR 24X24 UNLESS OTHERWISE NOTED.

**KEY PLAN:**

**1 FOURTH FLOOR – NEW WORK**  
SCALE: 1/8" = 1'-0"

Number	Fourth Floor Room Name and Numbers	Number	Fourth Floor Room Name and Numbers	Number	Fourth Floor Room Name and Numbers	Number	Fourth Floor Room Name and Numbers	Number	Fourth Floor Room Name and Numbers	Number	Fourth Floor Room Name and Numbers	Number	Fourth Floor Room Name and Numbers
4-C1	CORRIDOR	4E-04	OFFICE	4E-23	SUPER	4W-03	OFFICE	4W-22	OFFICE	407	TESTING STORAGE	428	DIRECTOR
4-C2	CORRIDOR	4E-05	OFFICE	4E-24	OFFICE	4W-04	OFFICE	4W-23	SUPER	408	CLASSROOM	429	CLASSROOM
4-C4	CORRIDOR	4E-06	ADMINPART-TIME	4E-25	OFFICE	4W-05	OFFICE	4W-24	OFFICE	409	CLASSROOM	430	ASSIST
4-C5	CORRIDOR	4E-07	OFFICE	4E-26	OFFICE	4W-06	OFFICE	4W-25	OFFICE	410	TESTING INTAKING	431	INT
4-C6	CORRIDOR	4E-08	OFFICE	4E-27	OFFICE	4W-07	ADMINPART-TIME	4W-26	OFFICE	411	RR	432	ELEC.
4-C7	CORRIDOR	4E-09	OFFICE	4E-28	ADMINPART-TIME	4W-08	OFFICE	4W-27	OFFICE	412	F. RR	434	OUTDOOR GYM
4-C8	CORRIDOR	4E-10	OFFICE	4E-29	SUPER	4W-09	OFFICE	4W-28	ADMINPART-TIME	413	M. RR	435	INTERVIEW
4-C9	CORRIDOR	4E-11	OFFICE	4E-30	OFFICE	4W-10	OFFICE	4W-29	OFFICE	414	PREP KITCHEN	437	M RR
4-C10	CORRIDOR	4E-12	OFFICE	4E-32	OFFICE	4W-11	OFFICE	4W-30	OFFICE	415	ELEC	438	F. RR
4-C11	CORR	4E-13	SUPER	4E-33	OFFICE	4W-12	OFFICE	4W-31	OFFICE	416	OFFICE	439	STOR
4-E1	ELEV	4E-14	OFFICE	4E-34	OFFICE	4W-13	SUPER	4W-32	OFFICE	417	INTERVIEW	440	Room
4-E2	ELEV	4E-15	MANAGER	4E-35	OFFICE	4W-14	OFFICE	4W-33	OFFICE	418	STOR	440	OFFICE
4-E3	ELEV	4E-16	OFFICE	4E-36	OFFICE	4W-15	MANAGER	4W-34	OFFICE	419	INTERVIEW	441	Room
4-E4	ELEV	4E-17	SUPER	4E-37	OFFICE	4W-16	OFFICE	4W-35	OFFICE	421	INTERVIEW	441	CONFERENCE
4-S1	STAIRS	4E-18	OFFICE	4E-38	OFFICE	4W-17	SUPER	4W-17	WELLNESS	422	INTERVIEW	442	OFFICE
4-S3	STAIRS	4E-19	SUPER	4E-39	NOOK	4W-18	OFFICE	4W-18	OFFICE	423	KITCHENETTE	443	STOR
4-S4	STAIR	4E-20	OFFICE	4E-40	NOOK	4W-19	SUPER	4W-19	SUPER	425	F. RR	444	OFFICE
4E-01	OFFICE	4E-21	MANAGER	4E-41	NOOK	4W-20	OFFICE	4W-20	OFFICE	426	STOR	446	WELLNESS
4E-02	OFFICE	4E-22	OFFICE	4W-01	OFFICE	4W-21	MANAGER	405	RECEPTIONIST	427	M. RR	447	JC.
4E-03	OFFICE			4W-02	OFFICE			406	CLASSROOM				

1	BID/PERMIT SET	09/23/2024
No.	Revisions / Submissions	Date

**LWC**  
INCORPORATED  
434 East First Street Dayton, OH 45402 937.223.6500  
712 East Main Street Richmond, IN 47374 765.966.3546

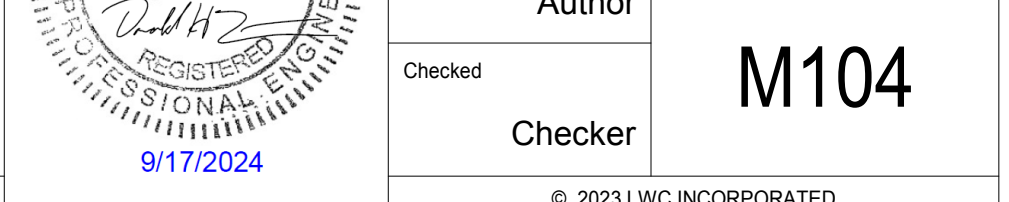
**MONTGOMERY COUNTY**  
MONTGOMERY COUNTY JUVENILE COURT

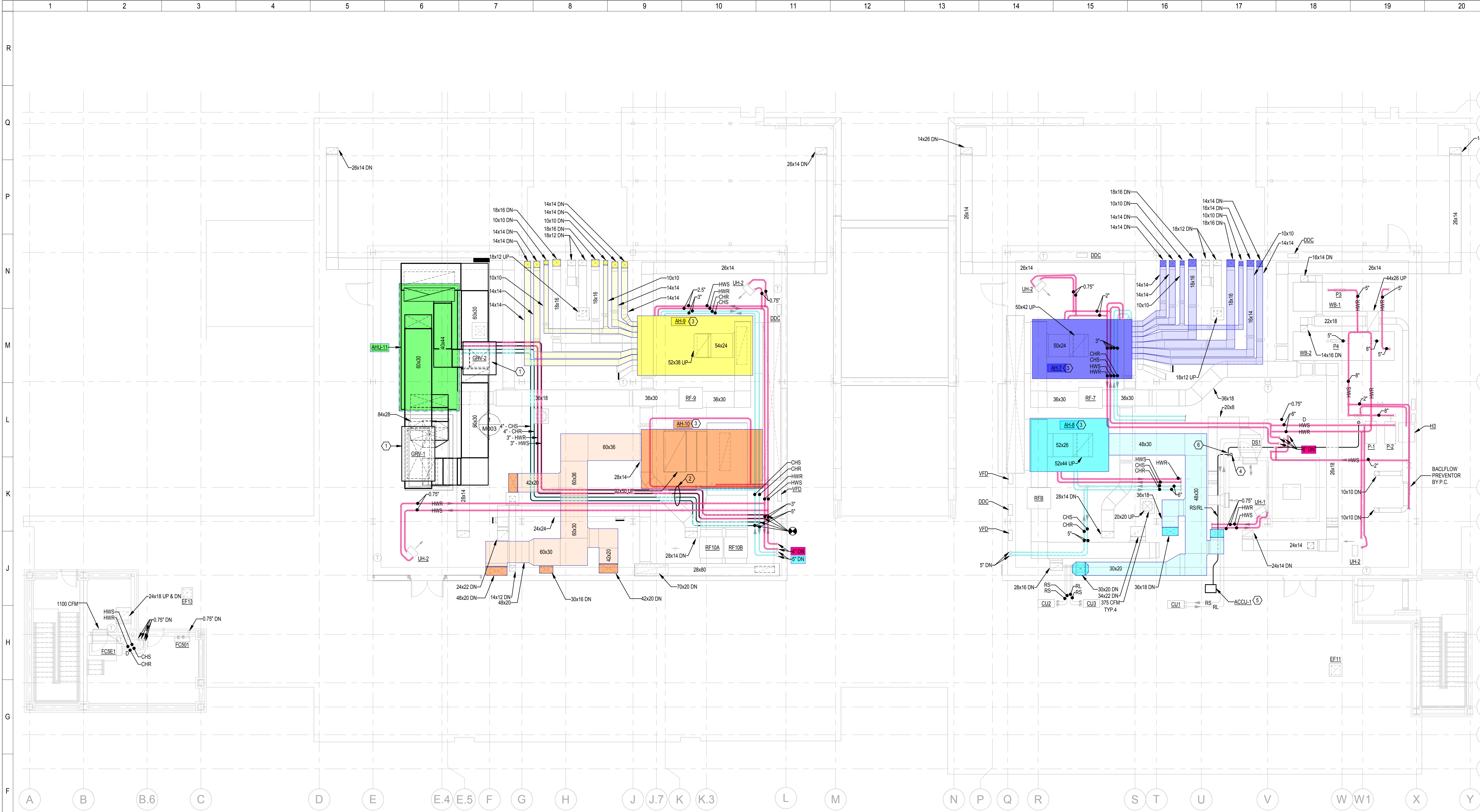
**MONTGOMERY COUNTY JUVENILE COURT**

380 W 2ND STREET, SUITE 1416  
DAYTON, OHIO 45422

**FOURTH FLOOR – NEW WORK**

Comm. No.	23632.00	Date	09.23.2024
Drawn		Author	
Checked		Checker	M104





**1 PENTHOUSE – NEW WORK**  
SCALE: 1/8" = 1'-0"

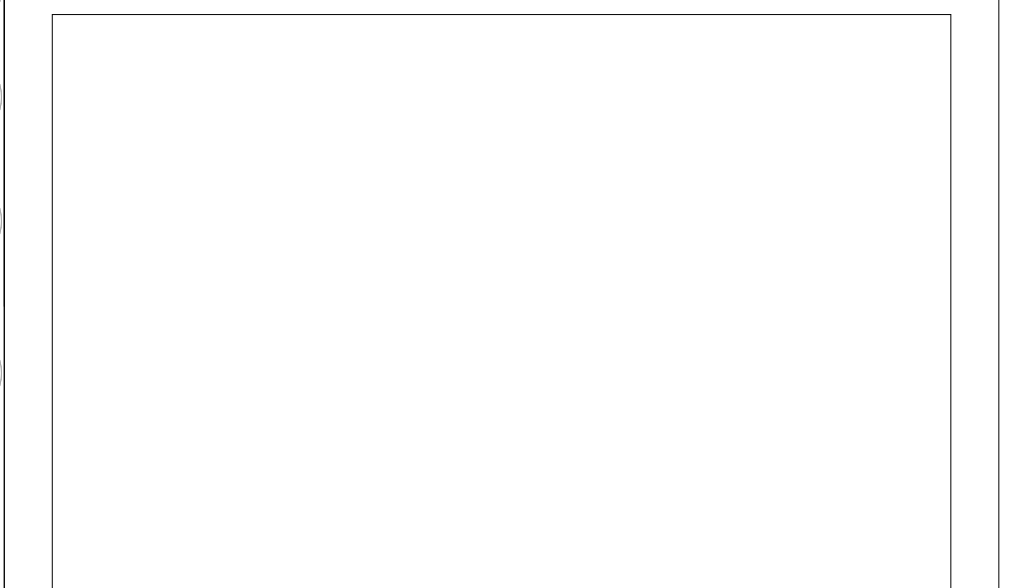
**SHEET NOTES:**

- GRV LOCATED ON ROOF ABOVE.
- ROUTE NEW PIPING TO MAINTAIN EXISTING AHU CLEARANCE.
- REBALANCE EXISTING AHU. REFER TO SCHEDULE ON SHEET M003.
- REFRIGERANT LINES DOWN TO FLOOR BELOW. PROVIDE PIPING, SIZING, AND ACCESSORIES PER MANUFACTURER'S RECOMMENDATIONS. PROVIDE PROTECTIVE JACKETING ON PIPING EXPOSED TO OUTDOORS. ROUTE PIPING TO INDOOR EQUIPMENT ON FLOOR BELOW.
- INSTALL CONDENSING UNIT ON ROOF MOUNTED EQUIPMENT RAILS AND SECURE TO WITHSTAND WIND LOAD REQUIREMENTS, AND PER MANUFACTURER'S RECOMMENDATIONS.
- DRAIN LINE FROM FLOOR BELOW. ROUTE TO FLOOR DRAIN. TERMINATE WITH AIR GAP.

**GENERAL NOTES:**

A. NOTES HERE

**KEY PLAN:**



No.	Revisions / Submissions	Date
1	BID/PERMIT SET	09/23/2024

**LWC**  
INCORPORATED  
434 East First Street Dayton, OH 45402 937.223.6500  
712 East Main Street Richmond, IN 47374 765.966.3546

**MONTGOMERY COUNTY**  
MONTGOMERY COUNTY JUVENILE COURT  
**MONTGOMERY COUNTY JUVENILE COURT**  
380 W 2ND STREET, SUITE 1416  
DAYTON, OHIO 45422

**PENTHOUSE – NEW WORK**

Comm. No.	23632.00	Date	09.23.2024
Drawn	Author	Drawn No.	
Checked	Author	Checked	M105
Checked	Checker	Checked	

