

9/17/2024 2:34:38 PM

Autodesk Docs/Montgomery County Juvenile Justice Center/2023-07185-MEP-Central.rvt

FANS (3)											
UNIT NO.	DESCRIPTION	SERVICE	CFM	STATIC PRESS.	WHEEL DIA.	MAX. SONES	H.P.	VOLT	PHASE	APPROX. ROOF/WALL OPG.	REMARKS
RF7	BELT DRIVE INLINE CENTRIFUGAL	AH7 RETURN FAN	8,005	1.5"	36"	25	7.5	480	3	-	-
RF8	BELT DRIVE INLINE CENTRIFUGAL	AH8 RETURN FAN	8,830	1.75"	42"	24	10	480	3	-	-
RF9	BELT DRIVE INLINE CENTRIFUGAL	AH9 RETURN FAN	7,670	1.5"	36"	24	7.5	480	3	-	-
RF10A	BELT DRIVE INLINE CENTRIFUGAL	AH10 RETURN FAN A	9,155	1.75"	42"	24	10	480	3	-	-
RF10B	BELT DRIVE INLINE CENTRIFUGAL	AH10 RETURN FAN B	9,155	1.75"	42"	24	10	480	3	-	-

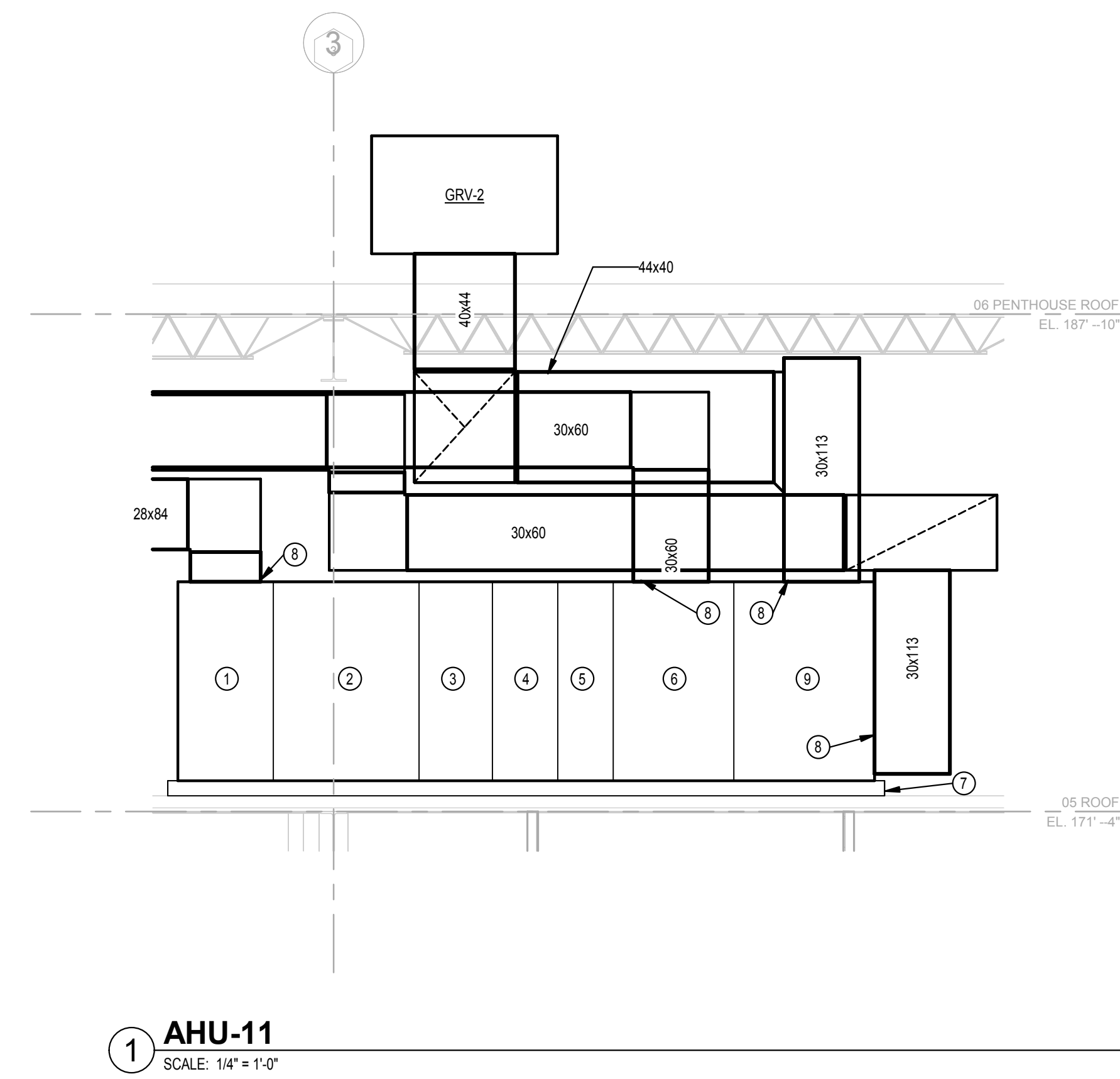
EXISTING AIR HANDLING UNIT SCHEDULE					
UNIT NUMBER	AHU-7(1)	AHU-8 (1)	AHU-9 (1)	AHU-10(1)	
AREA SERVED	SECURE EAST POD	EAST POD	SECURE WEST POD	WEST POD	
UNIT LOCATION	EAST PENTHOUSE	EAST PENTHOUSE	WEST PENTHOUSE	WEST PENTHOUSE	
UNIT CONFIGURATION	CONSTANT VOLUME MULTI-ZONE	VARIABLE VOLUME	CONSTANT VOLUME MULTI-ZONE	VARIABLE VOLUME	
BASIS OF DESIGN	TRANE SIZE 30	TRANE SIZE 30	TRANE SIZE 30	TRANE SIZE 66	
CFM TOTAL	8,005	8,830	7,670	18,310	
S.P.,EXT. S.P.-IN W.G.					
WHEEL DIA.	27"	22.4"	24"	36.5"	
WHEEL TYPE	PLENUM	FORWARD CURVED	PLENUM	AIRFOIL	
MOTOR (MIN. H.P.)	15	15	15	30	
VFD	NO	YES	NO	YES	
MIN. FACE AREA (SQFT)	27	27	27	31.5	
CAPACITY MBH	257.9	277.3	257.7	631.9	
ENT. AIR	42.2	42	42	44.7	
LEAV. AIR	71.9	70.9	72.9	76.5	
MAX. AIR P.D. INCHES W.G.	0.02	0.03	0.02	0.03	
MAX. WATER P.D. FT W.G.	0.25	0.31	0.27	0.6	
GPM	10.3	11.49	10.65	25.6	
PIPE RUNOUT SIZE	1.5"	1.5"	2"	2.5"	
MIN. AUTO. VALVE Cv & TYPE	4.9 / 3-WAY (2)	5.51 / 3-WAY (2)	5.1 / 3-WAY (2)	12.2 / 3-WAY (2)	
MIN. FACE AREA (SQFT)	13.5		13.5		
CAPACITY MBH	344.2		344.2		
ENT. AIR	42.2		42.2		
LEAV. AIR	81.8		81.8		
MAX. AIR P.D. INCHES W.G.	0.19		0.19		
MAX. WATER P.D. FT W.G.	0.2		0.2		
GPM	12		12		
PIPE RUNOUT SIZE	3"		3"		
MIN. AUTO. VALVE Cv & TYPE	5.76 / 3-WAY (2)		5.76 / 3-WAY (2)		
MIN. FACE AREA (SQFT)	29		29		
COOLANT	WATER / 30% GLYCOL	WATER / 30% GLYCOL	WATER / 30% GLYCOL	WATER / 30% GLYCOL	
SENSIBLE MBH	300	302.8	291.3	683.4	
TOTAL MBH					
ENT. AIR DB/WB	85.0/68.2	81.8/67.2	81.8/67.2	81.1/66.7	
LEAV. AIR DB/WB	50.8/50.68	47.7/47.43	47.3/47.23	47.2/47.1	
MAX. AIR P.D. INCHES W.G.	0.26	0.37	0.35	0.36	
MAX. WATER P.D. FT W.G.	4.5	3	2.9	8.2	
GPM	56.2	56.2	54.8	130.8	
PIPE RUNOUT SIZE	3"	3"	3"	4"	
MIN. AUTO. VALVE Cv & TYPE	26.976 / 3-WAY (2)	26.976 / 3-WAY (2)	26.304 / 3-WAY (2)	62.784 / 3-WAY (2)	
CFM					
TOTAL S.P.,EXT. S.P.-IN W.G.					
WHEEL DIA. WHEEL TYPE					
MOTOR (MIN. H.P.)					
VFD					
TYPE	12" 85% CARTRIDGE / 2" 30% PLEATED	12" 85% CARTRIDGE / 2" 30% PLEATED	12" 85% CARTRIDGE / 2" 30% PLEATED	12" 85% CARTRIDGE / 2" 30% PLEATED	
FACE ARE SQ. FT.	28	28	28	73.3	
PRESS. IN. W.G. MIDLIFE	0.7 / 0.9	0.7 / 0.9	0.7 / 0.9	0.7 / 0.9	
% MINIMUM OUTSIDE AIR	38%	38%	39%	34%	
Vibration isolators	INTERNAL	INTERNAL	INTERNAL	INTERNAL	

SHEET NOTES:

- EXISTING AIR HANDLING UNIT SCHEDULE NOTES:
- REPLACEMENT EXISTING AHU COILS AND FANS TO NEW CONDITIONS PROVIDED IN SCHEDULE.
 - PROVIDE NEW 3-WAY VALVE FOR COIL TO REPLACE EXISTING 2-WAY VALVE
 - REPLACEMENT EXISTING RETURN FANS TO NEW CFM PROVIDED IN SCHEDULE.

GENERAL NOTES:

KEY PLAN:



AHU-11 NOMENCLATURE

- SUPPLY AIR DISCHARGE PLENUM.
- SUPPLY AIR FAN ARRAY.
- COOLING COIL WITH ACCESS.
- HEATING COIL WITH ACCESS.
- FILTER SECTION.
- OUTSIDE AIR AND MIXING PLENUM.
- 4" HIGH CONCRETE HOUSEKEEPING PAD TYPE L1 VIBRATION ISOLATION.
- DUCT SAME SIZE AS UNIT CONNECTION.
- RETURN AIR FAN ARRAY AND PLENUM.

1	BID/PERMIT SET	09/23/2024
No.	Revisions / Submissions	Date

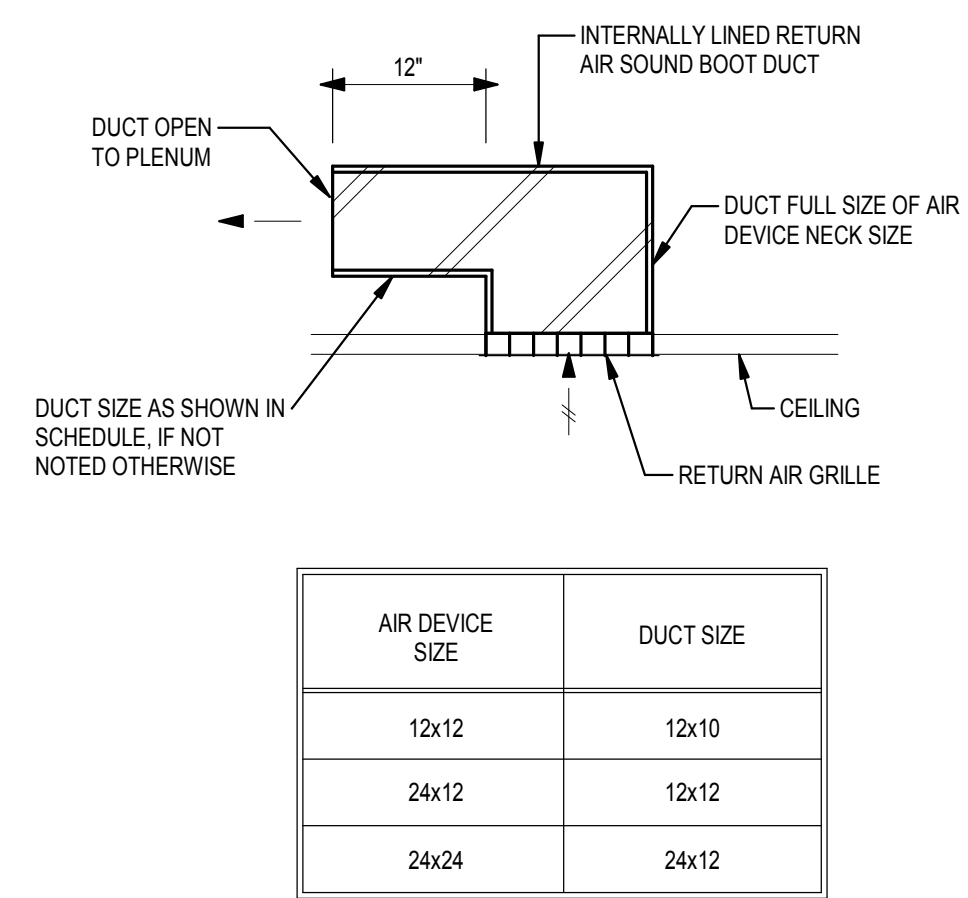
LWC
INCORPORATED
434 East First Street Dayton, OH 45402 937.223.6500
712 East Main Street Richmond, IN 47374 765.966.3546

MONTGOMERY COUNTY
MONTGOMERY COUNTY JUVENILE COURT
MONTGOMERY COUNTY JUVENILE COURT
380 W 2ND STREET, SUITE 1416
DAYTON, OHIO 45422

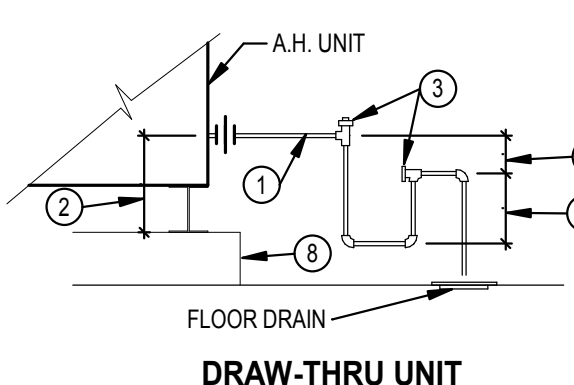
SCHEDULES	
Comm. No.	Date
23632.00	09.23.2024
Drawn	Drawing No.
Author	M003
Checked	Checker
PROJECT NO. 2023-07185 9/17/2024	

- NOTES**
- CONICAL SPIN-IN BRANCH TAP FITTING, STRAIGHT SIDE, INTEGRAL INSULATION GUARD SLEEVE REQUIRED FOR TAP FITTING TO MAIN SUPPLY DUCT WITH INTERNAL INSULATION.
 - ROUND SHEET METAL BRANCH DUCT, SAME SIZE AS AIR TERMINAL UNIT INLET SIZE UNLESS NOTED OTHERWISE.
 - INSULATED FLEXIBLE DUCT, MAXIMUM LENGTH OF 4 FT, MINIMUM LENGTH OF 4 IN. STRETCH FLEXIBLE DUCT TO 90% OF FULLY EXTENDED LENGTH.
 - AIR TERMINAL UNIT.
 - MINIMUM FOUR HANGER RODS FOR UNIT (CORNER POINTS), ATTACH TO STRUCTURE.
 - TRANSITION WHEN REQUIRED.
 - MINIMUM STRAIGHT LENGTH OF DUCT SHALL BE TERMINAL UNIT MANUFACTURER'S REQUIRED LENGTH, BUT AT LEAST 3 TIMES UNIT INLET DIAMETER.
 - DUCT HANGER, ATTACH TO STRUCTURE.
 - DUCT SHALL BE FULL SIZE OF UNIT OUTLET UNLESS NOTED OTHERWISE ON FLOOR PLANS.
 - REHEAT COIL WHEN SPECIFIED. REFER TO COIL DETAIL.

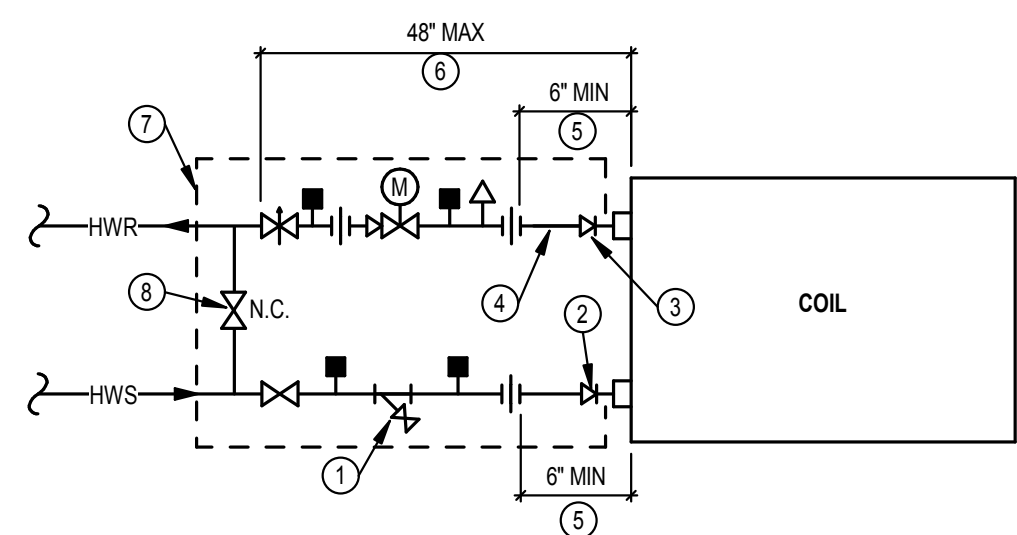
1 AIR TERMINAL UNIT DUCT CONNECTION
SCALE: NONE



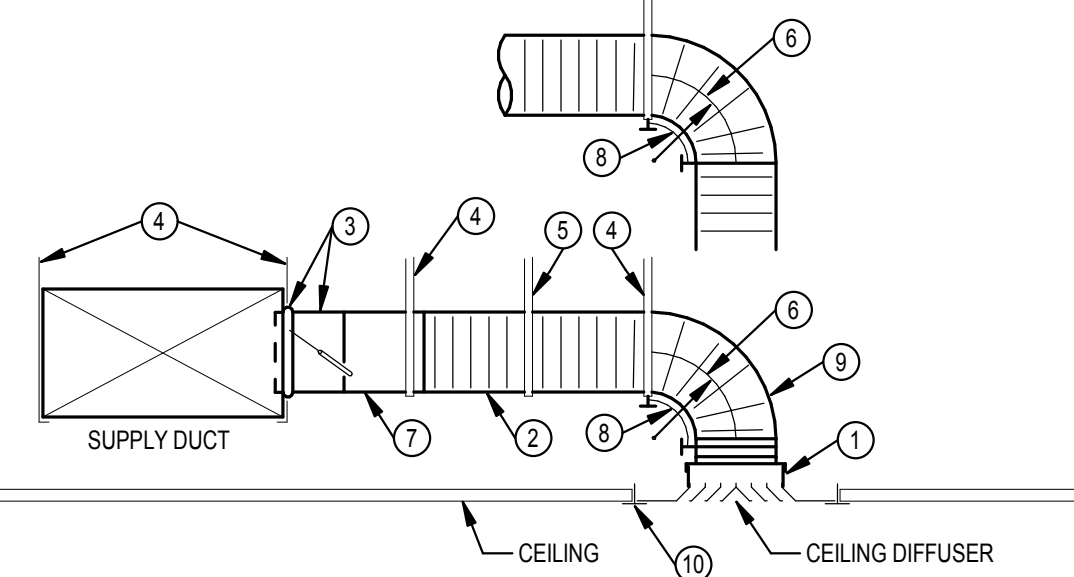
5 RETURN AIR SOUND BOOT
SCALE: NONE



9 AIR HANDLING UNIT DRAIN PIPING-FLOOR MOUNTED
SCALE: NONE

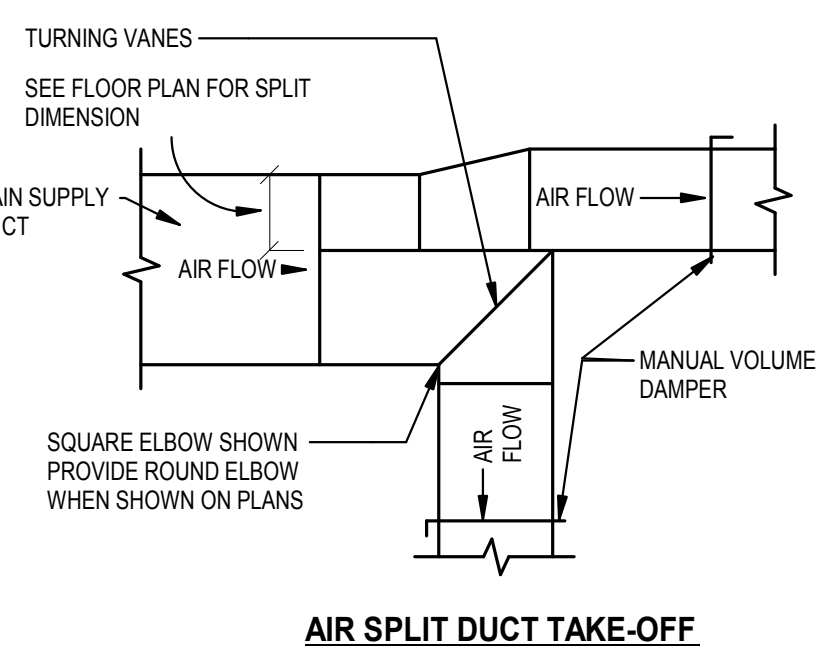


12 AIR TERMINAL UNIT REHEAT COIL/DUCT HEATING COIL
SCALE: NONE

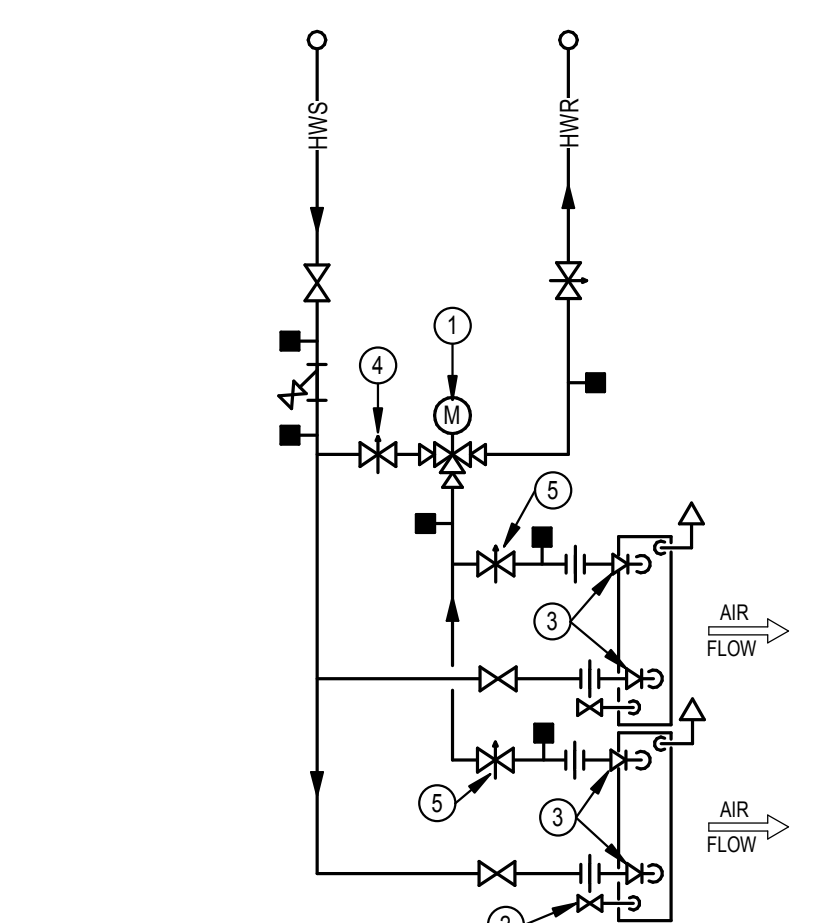


- NOTES**
- SQUARE-TO-ROUND ADAPTER IF DIFFUSER NECK IS SQUARE. CONNECT ADAPTOR TO DIFFUSER. SEAL TO AIR DEVICE. SEAL CLASS A. INSULATE ADAPTOR AND EXPOSED BACKSIDE SURFACES OF AIR DEVICE.
 - INSULATED FLEXIBLE DUCT SAME DIAMETER AS BRANCH DUCT (7) 5 FT. MAXIMUM TOTAL LENGTH PER AIR DEVICE. STRETCH FLEXIBLE DUCT TO AT LEAST 90% OF FULLY EXTENDED LENGTH.
 - SPIN-IN BRANCH TAP FITTING, STRAIGHT SIDE WITH MANUAL DAMPER. DAMPER SHAFT IN HORIZONTAL. INTEGRAL INSULATION GUARD SLEEVE REQUIRED FOR TAP FITTING TO MAIN DUCT WITH INTERNAL INSULATION, AND EXTENDED DAMPER SHAFT AND HANDLE WITH STAND-OFF TO ACCOMMODATE EXTERNAL INSULATION.
 - DUCT STRAP HANGER, ATTACH TO STRUCTURE.
 - STRAP HANGER REQUIRED IF LENGTH OF FLEXIBLE DUCT IS LONGER THAN 4 FT.
 - MINIMUM CENTERLINE RADIUS EQUAL TO DUCT DIAMETER.
 - ROUND SHEET METAL BRANCH DUCT, SAME SIZE AS DIFFUSER INLET UNLESS NOTED OTHERWISE.
 - FLEXIBLE DUCT ELBOW SUPPORT, INSTALLED WITH NYLON BANDING PER MANUFACTURER'S INSTRUCTIONS.
 - A RADIUS SHEET METAL ELBOW MAY BE USED IN LIEU OF A FLEXIBLE DUCT SUPPORT WHEN CONNECTED DIRECTLY TO AIR DEVICE.
 - CEILING T-BAR SUPPORT (FOR LAY-IN APPLICATIONS). COORDINATE AND VERIFY T-BAR TYPE FOR COMPATIBILITY WITH DIFFUSER.

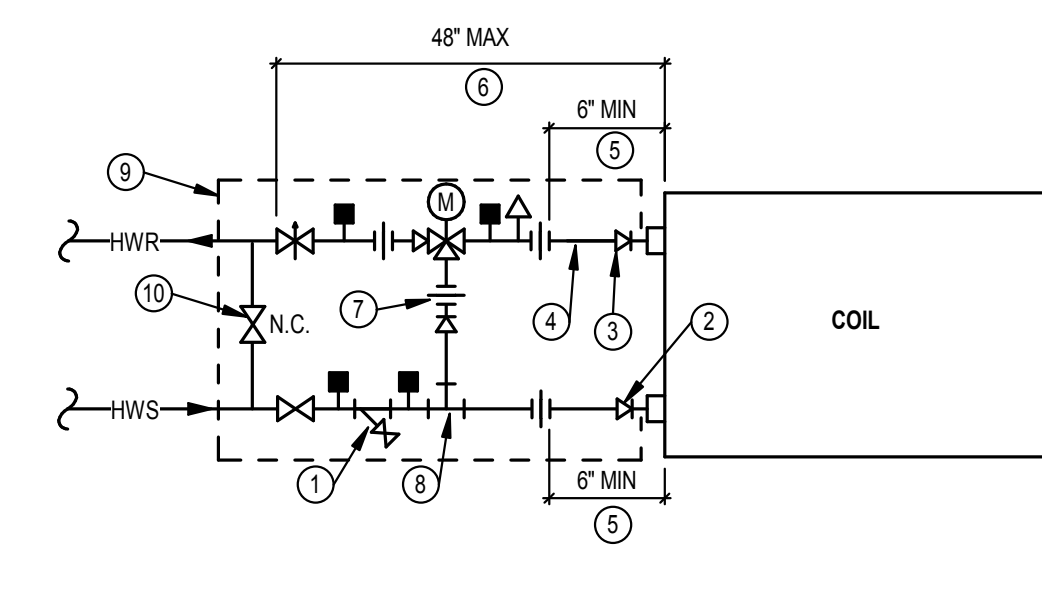
2 CEILING DIFFUSER DUCT CONNECTION
SCALE: NONE



6 SUPPLY DUCTWORK BRANCH TAKE-OFFS
SCALE: NONE



10 A.H. UNIT HOT WATER COILS
SCALE: NONE

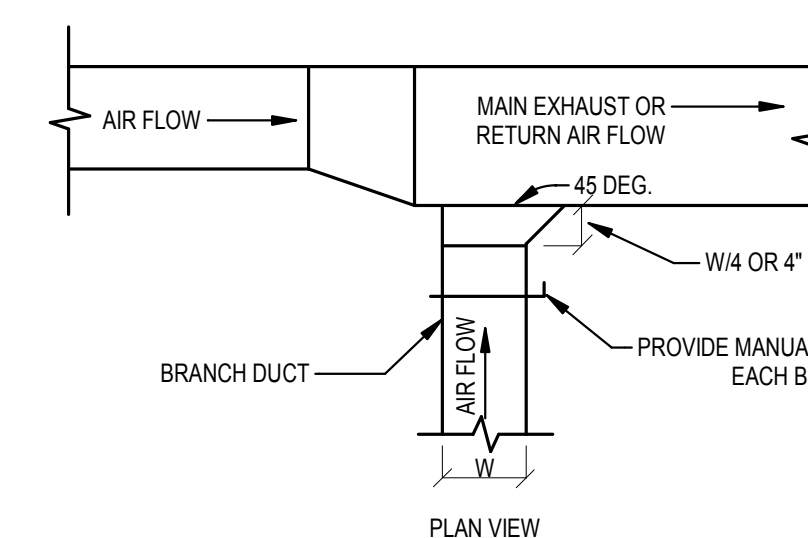


13 AIR TERMINAL UNIT REHEAT COIL/DUCT HEATING COIL
SCALE: NONE

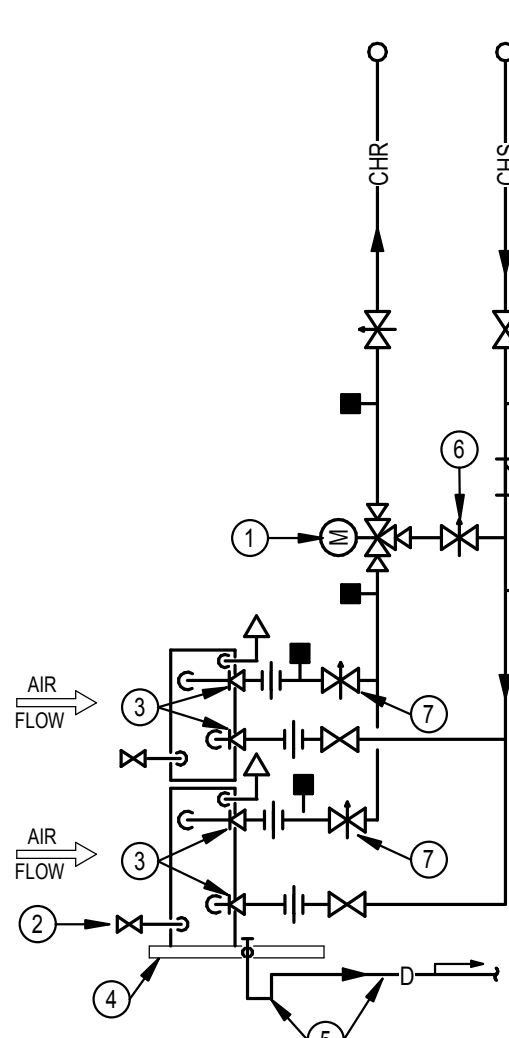


- NOTES**
- SHEET METAL PLENUM, FULL SIZE OF GRILLE NECK, MINIMUM 6" TALL WITH SAME INTERNAL OR EXTERNAL INSULATION AS RETURN OR EXHAUST DUCT, CONNECT TO GRILLE. SEAL PLENUM AND CONNECTION TO GRILLE. SEAL CLASS A.
 - FLEXIBLE DUCT, SAME DIAMETER AS BRANCH DUCT (7) 5 FT. MAXIMUM TOTAL LENGTH PER AIR DEVICE. STRETCH FLEXIBLE DUCT TO AT LEAST 90% OF FULLY EXTENDED LENGTH.
 - SPIN-IN BRANCH TAP FITTING, STRAIGHT SIDE WITH MANUAL DAMPER. DAMPER SHAFT IN HORIZONTAL. INTEGRAL INSULATION GUARD SLEEVE REQUIRED FOR TAP FITTING TO MAIN DUCT WITH INTERNAL INSULATION, EXTENDED DAMPER SHAFT AND HANDLE WITH STAND-OFF REQUIRED FOR EXTERNALLY INSULATED DUCTWORK.
 - SPIN-IN TAP FITTING SIMILAR TO (3) EXCEPT NO DAMPER. DUCT STRAP HANGER, ATTACH TO STRUCTURE.
 - STRAP HANGER REQUIRED IF LENGTH OF FLEXIBLE DUCT IS LONGER THAN 4 FT.
 - ROUND SHEET METAL BRANCH DUCT, SIZE AS INDICATED IN ADJACENT SCHEDULE UNLESS NOTED OTHERWISE ON PLANS.
 - CEILING T-BAR SUPPORT (FOR LAY-IN APPLICATIONS). COORDINATE AND VERIFY T-BAR TYPE FOR COMPATIBILITY WITH GRILLE.
 - MINIMUM CENTERLINE RADIUS EQUAL TO DUCT DIAMETER.
 - FLEXIBLE DUCT ELBOW SUPPORT, INSTALLED WITH NYLON BANDING PER MANUFACTURER'S INSTRUCTIONS.
 - A RADIUS SHEET METAL ELBOW MAY BE USED IN LIEU OF A FLEXIBLE DUCT SUPPORT WHEN CONNECTED DIRECTLY TO AIR DEVICE.

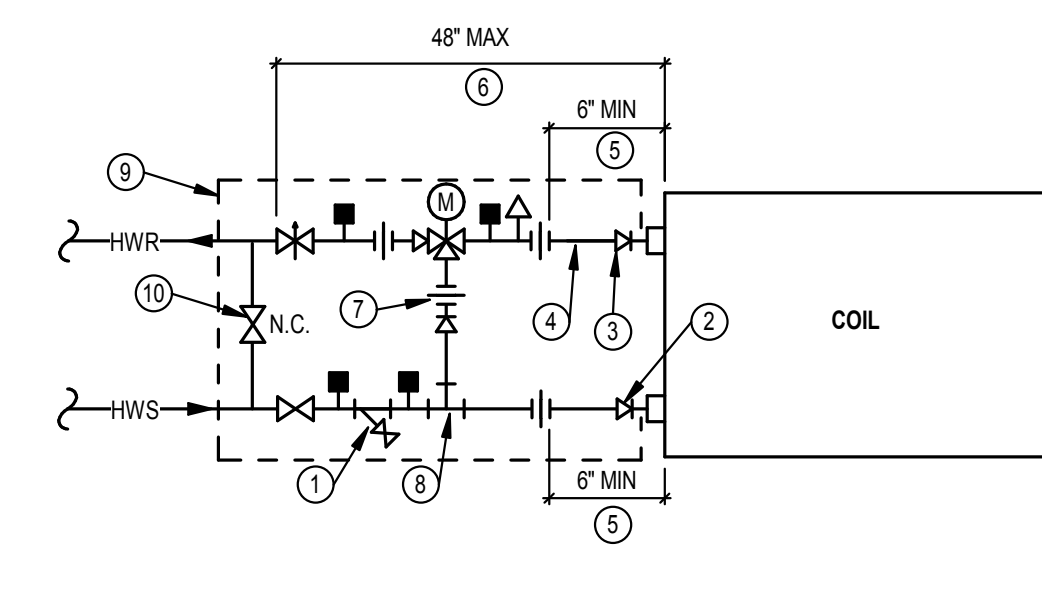
3 RETURN/EXHAUST GRILLE DUCT CONNECTION
SCALE: NONE



7 EXHAUST OR RETURN BRANCH DUCTWORK
SCALE: NONE



11 A.H. UNIT CHILLED WATER COILS
SCALE: NONE



14 FIRE DAMPER TYPE "B"
SCALE: 1/8" = 1'-0"

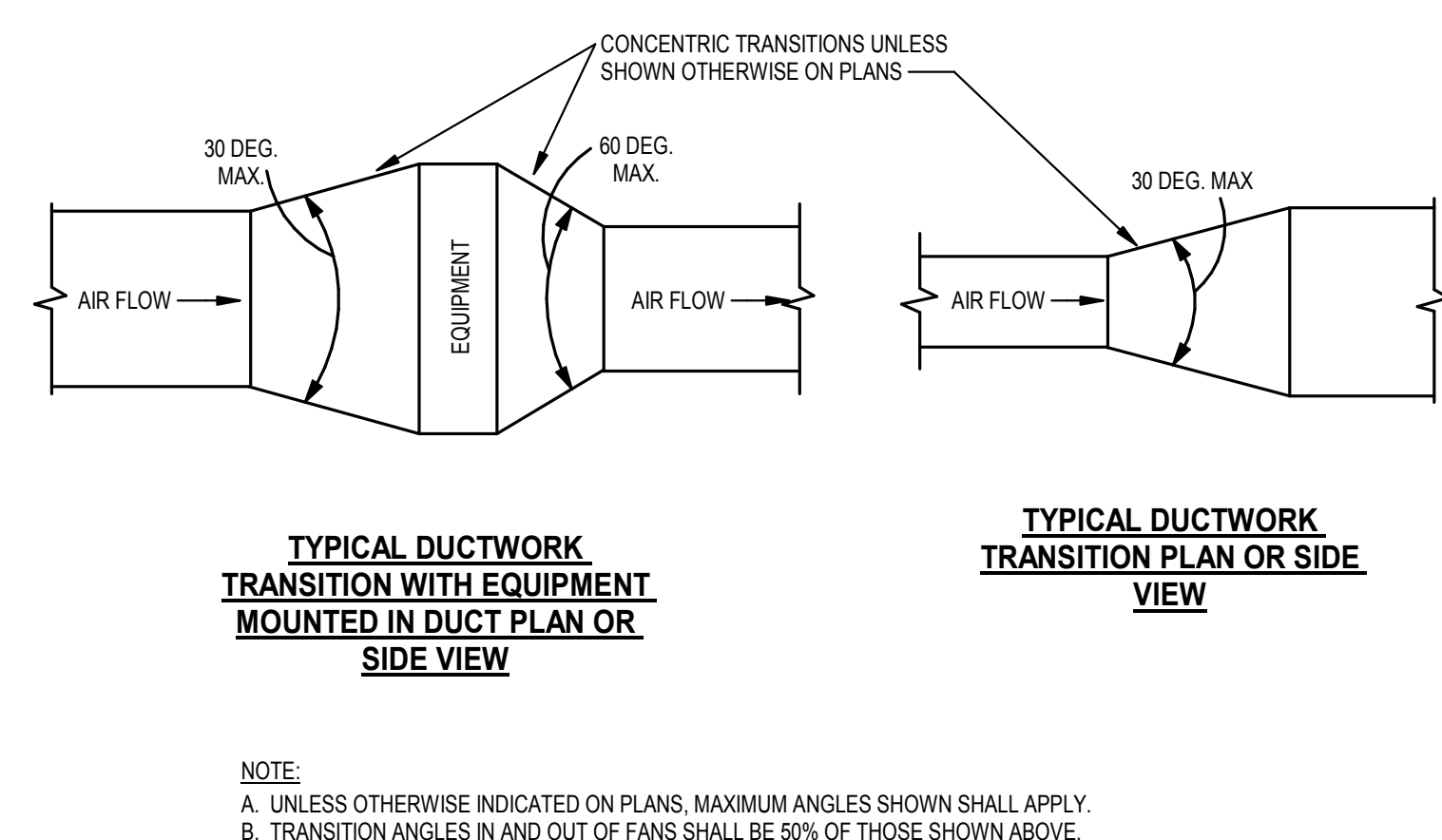


BRANCH CFM	RD. DUCT SIZE
0 TO 80 CFM	6"D
81 TO 120 CFM	7"D
121 TO 200 CFM	8"D
201 TO 400 CFM	10"D
401 TO 700 CFM	12"D
701 TO 1000 CFM	14"D

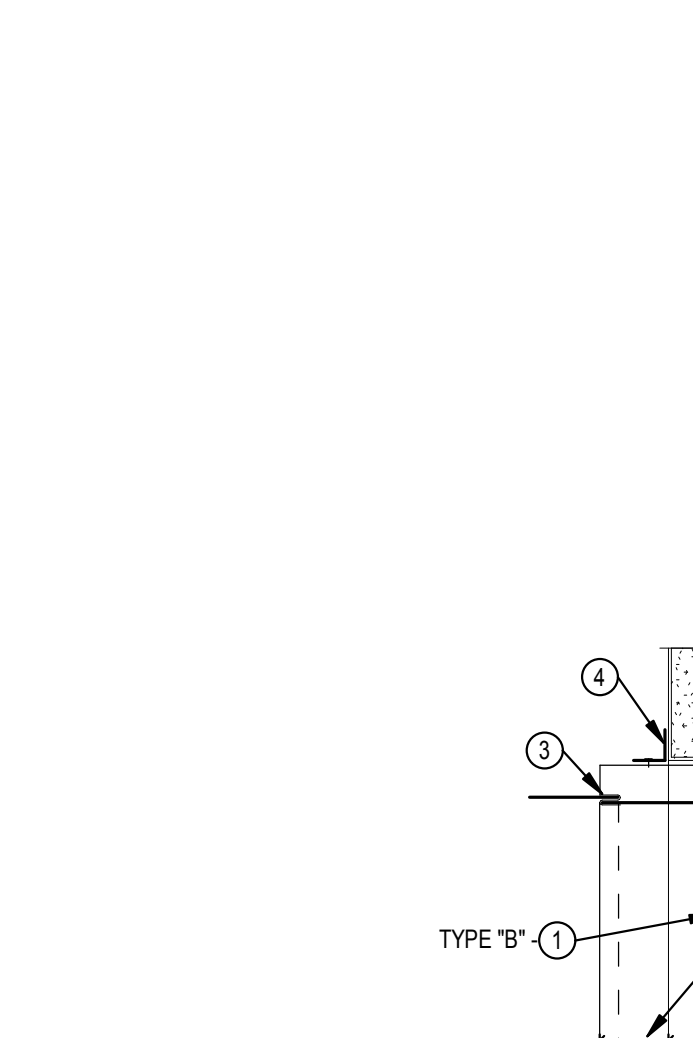
BRANCH CFM	RD. DUCT SIZE
0 TO 80 CFM	6"D
81 TO 120 CFM	7"D
121 TO 200 CFM	8"D
201 TO 400 CFM	10"D
401 TO 700 CFM	12"D
701 TO 1000 CFM	14"D

- NOTES**
- SHEET METAL PLENUM, FULL SIZE OF GRILLE NECK, MINIMUM 4" TALLER THAN DUCT RUNOUT SIZE, WITH SAME INTERNAL OR EXTERNAL INSULATION AS RETURN OR EXHAUST DUCT, CONNECT TO GRILLE. SEAL PLENUM AND CONNECTION TO GRILLE. SEAL CLASS A.
 - FLEXIBLE DUCT, SAME DIAMETER AS BRANCH DUCT (7) 5 FT. MAXIMUM TOTAL LENGTH PER AIR DEVICE. STRETCH FLEXIBLE DUCT TO AT LEAST 90% OF FULLY EXTENDED LENGTH.
 - SPIN-IN BRANCH TAP FITTING, STRAIGHT SIDE WITH MANUAL DAMPER. DAMPER SHAFT IN HORIZONTAL. INTEGRAL INSULATION GUARD SLEEVE REQUIRED FOR TAP FITTING TO MAIN DUCT WITH INTERNAL INSULATION, EXTENDED DAMPER SHAFT AND HANDLE WITH STAND-OFF REQUIRED FOR EXTERNALLY INSULATED DUCTWORK.
 - SPIN-IN TAP FITTING SIMILAR TO (3) EXCEPT NO DAMPER. DUCT STRAP HANGER, ATTACH TO STRUCTURE.
 - STRAP HANGER REQUIRED IF LENGTH OF FLEXIBLE DUCT IS LONGER THAN 4 FT.
 - ROUND SHEET METAL BRANCH DUCT, SIZE AS INDICATED IN ADJACENT SCHEDULE UNLESS NOTED OTHERWISE ON PLANS.
 - CEILING T-BAR SUPPORT (FOR LAY-IN APPLICATIONS). COORDINATE AND VERIFY T-BAR TYPE FOR COMPATIBILITY WITH GRILLE.
 - MINIMUM CENTERLINE RADIUS EQUAL TO DUCT DIAMETER.
 - FLEXIBLE DUCT ELBOW SUPPORT, INSTALLED WITH NYLON BANDING PER MANUFACTURER'S INSTRUCTIONS.
 - A RADIUS SHEET METAL ELBOW MAY BE USED IN LIEU OF A FLEXIBLE DUCT SUPPORT WHEN CONNECTED DIRECTLY TO AIR DEVICE.

4 RETURN/EXHAUST GRILLE DUCT CONNECTION
SCALE: NONE



8 DUCTWORK TRANSITIONS
SCALE: NONE



GENERAL NOTES

- FIRE DAMPERS SHALL BE UL LABELED.
- INSTALLATION OF FIRE DAMPERS AND ACCESSORIES SHALL CONFORM TO NFPA 90A, SMACNA AND MANUFACTURER'S INSTRUCTIONS.
- DETAILS SHOW INSTALLATION OF FIRE DAMPER IN WALL. DAMPER INSTALLATION IN FLOOR SIMILAR. COORDINATE REQUIRED ACCESS LOCATIONS.
- INSULATE RETAINING ANGLES FOR SYSTEMS REQUIRED TO BE INSULATED.

NOTES

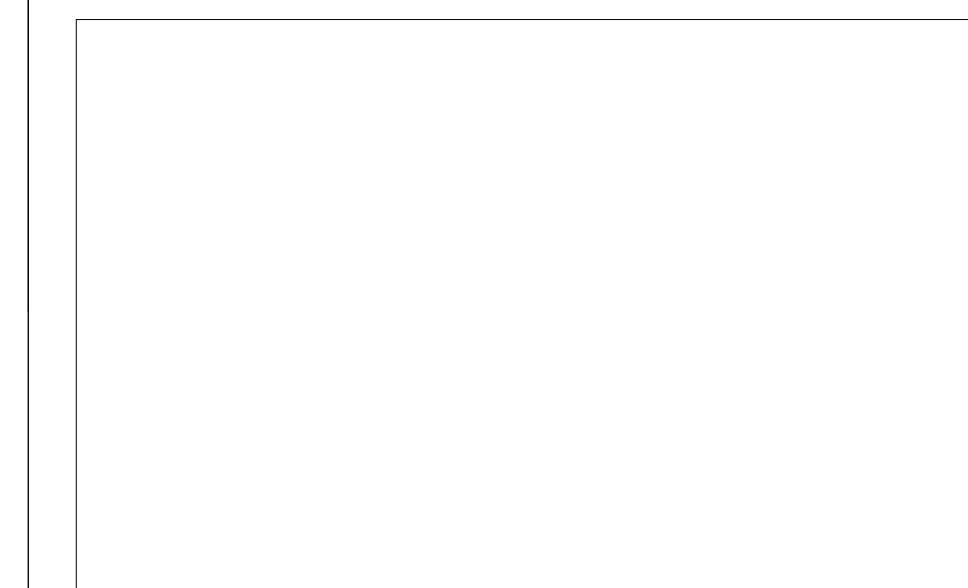
- FIRE DAMPER, FOLDED BLADE CURTAIN TYPE, EXCEPT AS NOTED. VERTICAL MOUNT. GRAVITY DROP. HORIZONTAL MOUNT. SPRING LOADED TO CLOSE. REFER TO SPECS FOR VELOCITY LIMITATIONS OF EACH TYPE. REFER TO DRAWINGS FOR STATIC OR DYNAMIC REQUIREMENTS.
- TYPE "B" - BLADES STORED OUT OF AIR STREAM. RECTANGULAR, ROUND OR OVAL DUCT CONNECTION.
- DUCT SLEEVE CONNECTION BREAKAWAY TYPE SHOWN. CONNECTION MAY BE RIGID TYPE IF ALLOWED BY CODE AUTHORITY.
- RETAINING ANGLE ALL FOUR SIDES. GAUGE PER SMACNA. 4" MINIMUM OVERLAP OF WALL OPENING. LONGER LEGS MAY BE REQUIRED TO ATTAIN REQUIRED OVERLAP. BOLT, SCREW OR TACK WELD TO WALL SLEEVE. SPACING OF FASTENERS PER SMACNA.
- DUCT ACCESS PANEL OR DOOR. REFER TO SPECIFICATIONS.
- CEILING ACCESS PANEL IF CEILING IS NOT ACCESSIBLE.
- NOTE OMITTED.
- 10 GAUGE WALL SLEEVE WITH 0.5" WIDE LEG (ALL FOUR SIDES) ON END OPPOSITE DUCT CONNECTION TO OVERLAP WALL OPENING.
- 14 GAUGE RETAINER STRIP FASTENED TO UNDERSIDE OF FLOOR SLAB, ALL FOUR SIDES.



SHEET NOTES:

GENERAL NOTES:

KEY PLAN:

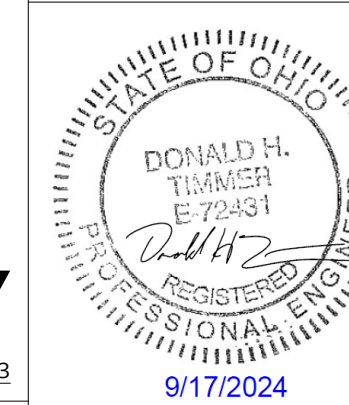


No.	BID/PERMIT SET	Revisions / Submissions	Date
1			09/23/2024

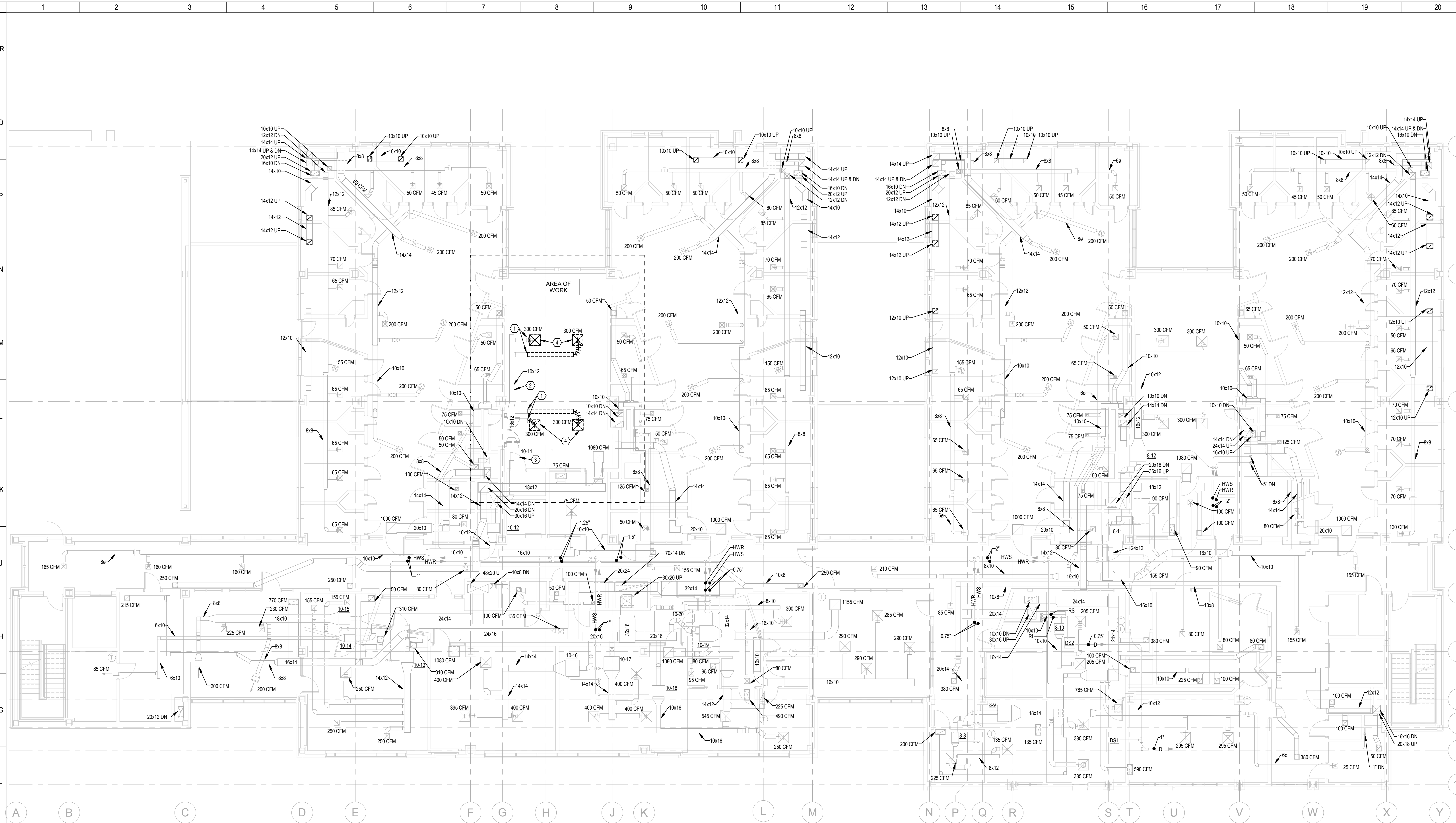
LWC
INCORPORATED
434 East First Street Dayton, OH 45402 937.223.6500
712 East Main Street Richmond, IN 47374 765.966.3546

MONTGOMERY COUNTY JUVENILE COURT
380 W 2ND STREET, SUITE 1416
DAYTON, OHIO 45422

DETAILS	
Comm. No.	Date
23632.00	09.23.2024
Drawn	Drawing No.
Author	M004
Checked	
Checker	



9/17/2024 2:34:49 PM



1 THIRD FLOOR – DEMOLITION
SCALE: 1/8" = 1'-0"

SHEET NOTES:

1. REMOVE DUCTWORK TO POINT INDICATED. MAINTAIN FOR CONNECTION TO NEW.
2. DUCTWORK IS EXISTING TO REMAIN.
3. VAV IS EXISTING AND TO REMAIN.
4. REMOVE AIR DEVICE.

GENERAL NOTES:

- A. CONTRACTOR TO PROVIDE PRICING TO REMOVE ALL ITEMS SHOWN COMPLETE AND DISPOSE OF IN A SAFE AND LEGAL MANNER.
- B. CONTRACTOR TO COORDINATE WITH OTHER TRADES FOR SAFE REMOVAL OF ITEMS SHOWN.
- C. WHERE MECHANICAL EQUIPMENT IS SHOWN TO BE REMOVED, CONTRACTOR TO INCLUDE PRICING FOR ALL POWER AND PIPING TO BE REMOVED, COMPLETE INCLUDING ALL HANGERS AND SUPPORTS UNLESS OTHERWISE NOTED.

KEY PLAN:



Autodesk Docs://Montgomery County Juvenile Justice Center/2023-07183-MEP-Central.rvt

1	BID/PERMIT SET	09/23/2024
No.	Revisions / Submissions	Date

LWC
INCORPORATED
434 East First Street Dayton, OH 45402 937.223.6500
712 East Main Street Richmond, IN 47374 765.966.3546

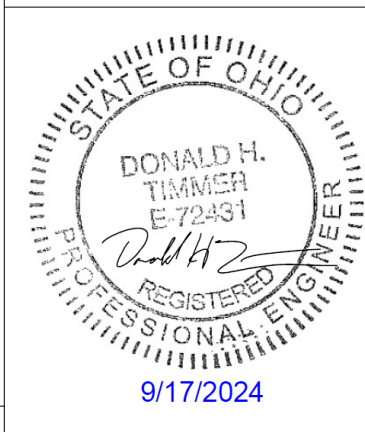
MONTGOMERY COUNTY
MONTGOMERY COUNTY JUVENILE COURT

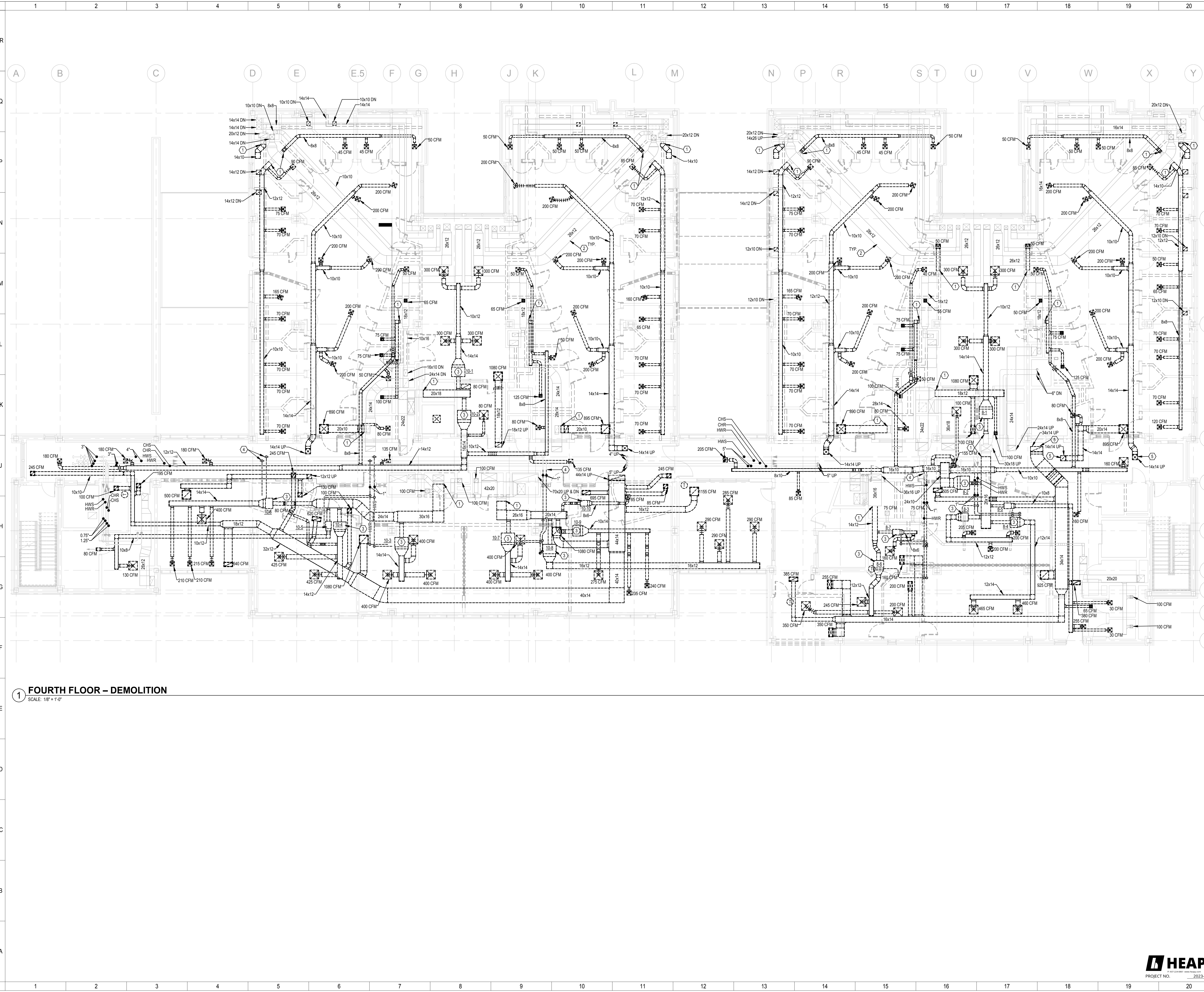
MONTGOMERY COUNTY JUVENILE COURT

380 W 2ND STREET, SUITE 1416
DAYTON, OHIO 45422

THIRD FLOOR – DEMOLITION

Comm. No.	23632.00	Date	09.23.2024
Drawn	Author	Drawing No.	MD103
Checked	Checker		





1 FOURTH FLOOR - DEMOLITION
 SCALE: 1/8" = 1'-0"

SHEET NOTES:

1. REMOVE DUCTWORK TO POINT INDICATED. CAP DUCTWORK TO MATCH.
2. DUCTWORK IS EXISTING AND TO REMAIN.
3. REMOVE EXISTING VAV BOX AND ASSOCIATED CONTROLS AND WIRING.
4. REMOVE PIPING TO POINT INDICATED. CAP PIPE TO MATCH.
5. REMOVE DUCTWORK BACK TO FLOOR PENETRATION AND CAP DUCTWORK TO MATCH.

GENERAL NOTES:

- A. CONTRACTOR TO PROVIDE PRICING TO REMOVE ALL ITEMS SHOWN COMPLETE AND DISPOSE OF IN A SAFE AND LEGAL MANNER.
- B. CONTRACTOR TO COORDINATE WITH OTHER TRADES FOR SAFE REMOVAL OF ITEMS SHOWN.
- C. WHERE MECHANICAL EQUIPMENT IS SHOWN TO BE REMOVED, CONTRACTOR TO INCLUDE PRICING FOR ALL POWER AND PIPING TO BE REMOVED, COMPLETE INCLUDING ALL HANGERS AND SUPPORTS UNLESS OTHERWISE NOTED.

KEY PLAN:



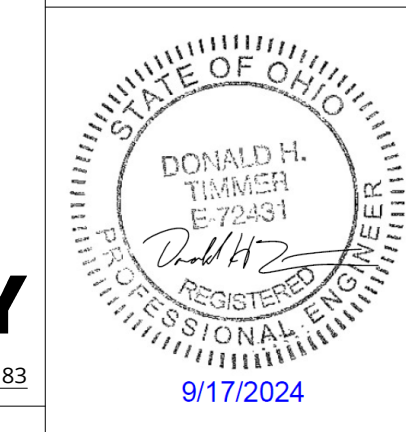
No.	Revisions / Submissions	Date
1	BID/PERMIT SET	09/23/2024

LWC
 INCORPORATED
 434 East First Street Dayton, OH 45402 937.223.6500
 712 East Main Street Richmond, IN 47374 765.966.3546

MONTGOMERY COUNTY
 MONTGOMERY COUNTY JUVENILE COURT
MONTGOMERY COUNTY JUVENILE COURT
 380 W 2ND STREET, SUITE 1416
 DAYTON, OHIO 45422

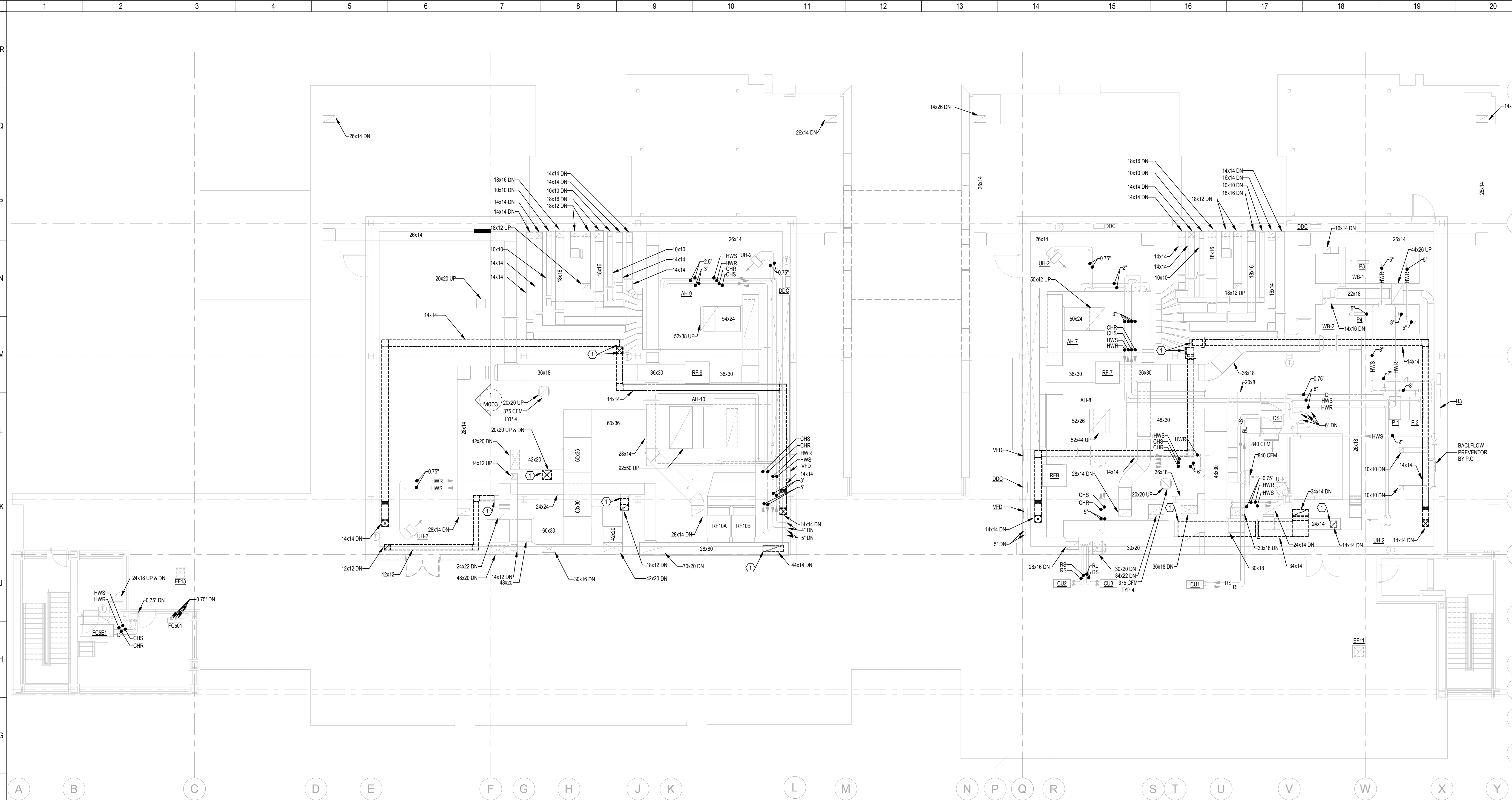
FOURTH FLOOR - DEMOLITION

Comm. No.	Date
23632.00	09.23.2024
Drawn	Drawn No.
Author	
Checked	MD104
Checker	



9/17/2024 2:34:56 PM

Autodesk Docs://Montgomery County Juvenile Justice Center/2023-07183-MEP-Central.rvt



1 PENTHOUSE - DEMOLITION
SCALE: 1/8" = 1'-0"

SHEET NOTES:

1. REMOVE DUCTWORK TO POINT INDICATED, CAP DUCTWORK TO MATCH.
2. REMOVE DUCTWORK TO FLOOR PENETRATION, CAP DUCTWORK TO MATCH.

GENERAL NOTES:

- A. CONTRACTOR TO PROVIDE PRICING TO REMOVE ALL ITEMS SHOWN COMPLETE AND DISPOSE OF IN A SAFE AND LEGAL MANNER.
- B. CONTRACTOR TO COORDINATE WITH OTHER TRADES FOR SAFE REMOVAL OF ITEMS SHOWN.
- C. WHERE MECHANICAL EQUIPMENT IS SHOWN TO BE REMOVED, CONTRACTOR TO INCLUDE PRICING FOR ALL POWER AND PIPING TO BE REMOVED COMPLETE INCLUDING ALL HANGERS AND SUPPORTS UNLESS OTHERWISE NOTED.

KEY PLAN:



No.	Revisions / Submissions	Date
1	BID/PERMIT SET	09/23/2024

LWC
INCORPORATED
434 East First Street Dayton, OH 45402 937.223.6500
712 East Main Street Richmond, IN 47374 765.966.3546

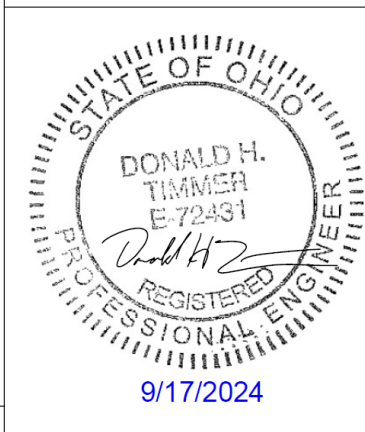
MONTGOMERY COUNTY
MONTGOMERY COUNTY JUVENILE COURT

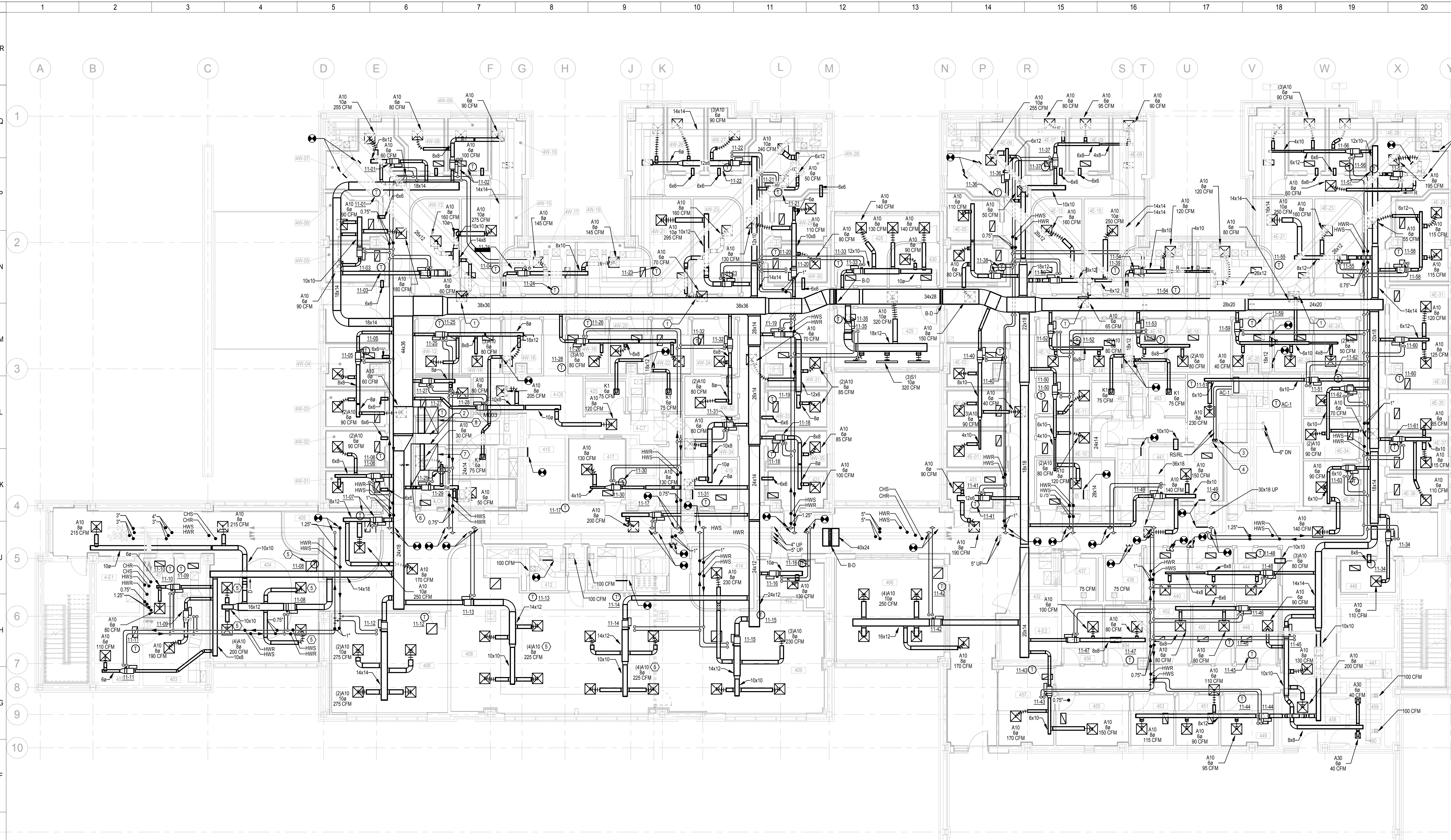
MONTGOMERY COUNTY JUVENILE COURT

380 W 2ND STREET, SUITE 1416
DAYTON, OHIO 45422

PENTHOUSE - DEMOLITION

Comm. No.	23632.00	Date	09.23.2024
Drawn	Author	Drawing No.	MD105
Checked	Checker		





- SHEET NOTES:**
- AIR DEVICE LOCATED IN AACT GRID OFFSET FROM CENTER OF CORRIDOR.
 - SUPPLY AND RETURN DUCTWORK UP TO FLOOR ABOVE.
 - REFRIGERANT LINES UP TO ROOF. SIZE PER MANUFACTURERS RECOMMENDATIONS.
 - PUMPED CONDENSATE FROM AC UNIT UP TO FLOOR ABOVE.
 - COORDINATE WITH ARCHITECT TO MATCH AIR DEVICE COLOR WITH CEILING.
 - 96x30 RETURN AIR DUCT OPEN TO CEILING PLENUM.
 - 30x60 RETURN AIR DUCTWORK UP TO FLOOR ABOVE.
 - 30x60 SUPPLY AIR DUCTWORK UP TO FLOOR ABOVE.

GENERAL NOTES:

A. ALL RETURNS ARE 11 AND EITHER 12X24 OR 24X24 UNLESS OTHERWISE NOTED.

KEY PLAN:

1 FOURTH FLOOR – NEW WORK
SCALE: 1/8" = 1'-0"

Number	Room Name	Number	Room Name	Number	Room Name	Number	Room Name	Number	Room Name	Number	Room Name	Number	Room Name	Number	Room Name	Number	Room Name
4-C1	CORRIDOR	4E-04	OFFICE	4E-23	SUPER	4W-03	OFFICE	4W-22	OFFICE	407	TESTING STORAGE	428	DIRECTOR	448	OFFICE	458	VEST
4-C2	CORRIDOR	4E-05	OFFICE	4W-04	OFFICE	4W-23	SUPER	4W-23	OFFICE	408	CLASSROOM	429	CONF	449	OFFICE	459	RR
4-C4	CORRIDOR	4E-06	ADMINPART-TIME	4E-25	OFFICE	4W-24	OFFICE	4W-24	OFFICE	409	CLASSROOM	430	ASSIST	450	OFFICE	460	RR
4-C5	CORRIDOR	4E-07	OFFICE	4E-26	OFFICE	4W-25	OFFICE	4W-25	OFFICE	410	TESTING INTAKING	431	INT	451	OFFICE	461	F. RR
4-C6	CORRIDOR	4E-08	OFFICE	4E-27	OFFICE	4W-26	OFFICE	4W-26	OFFICE	411	RR	432	ELEC.	452	OFFICE	462	STOR
4-C7	CORRIDOR	4E-09	OFFICE	4E-28	ADMINPART-TIME	4W-27	OFFICE	4W-27	OFFICE	412	F. RR	433	OUTDOOR GYM	453	OFFICE	463	M. RR
4-C8	CORRIDOR	4E-10	OFFICE	4E-29	SUPER	4W-28	ADMINPART-TIME	4W-28	ADMINPART-TIME	413	M. RR	434	INTERVIEW	454	OFFICE	464	KITCHENETTE
4-C9	CORRIDOR	4E-11	OFFICE	4E-30	OFFICE	4W-29	OFFICE	4W-29	OFFICE	414	PREP KITCHEN	435	M RR	455	SUPER	465	STOR
4-C10	CORRIDOR	4E-12	OFFICE	4E-31	OFFICE	4W-30	OFFICE	4W-30	OFFICE	415	ELEC	436	F. RR	456	OFFICE	466	CLASSROOM
4-C11	CORR	4E-13	SUPER	4E-32	OFFICE	4W-31	OFFICE	4W-31	OFFICE	416	STOR	437	STOR	457	MANAGER		
4-E1	ELEV	4E-14	OFFICE	4E-33	OFFICE	4W-32	OFFICE	4W-32	OFFICE	417	INTERVIEW	440	Room	458	VEST		
4-E2	ELEV	4E-15	MANAGER	4E-34	OFFICE	4W-33	OFFICE	4W-33	OFFICE	418	STOR	440	OFFICE	459	RR		
4-E3	ELEV	4E-16	OFFICE	4E-35	OFFICE	4W-34	OFFICE	4W-34	OFFICE	419	INTERVIEW	441	Room	460	RR		
4-E4	ELEV	4E-17	SUPER	4E-36	OFFICE	4W-35	OFFICE	4W-35	OFFICE	421	INTERVIEW	441	CONFERENCE	461	F. RR		
4-S1	STAIRS	4E-18	OFFICE	4E-37	OFFICE	4W-36	OFFICE	4W-36	OFFICE	422	INTERVIEW	442	OFFICE	462	STOR		
4-S3	STAIRS	4E-19	SUPER	4E-38	OFFICE	4W-37	OFFICE	4W-37	OFFICE	423	KITCHENETTE	443	STOR	463	M. RR		
4-S4	STAIR	4E-20	OFFICE	4E-39	NOOK	4W-38	OFFICE	4W-38	OFFICE	425	F. RR	444	OFFICE	464	KITCHENETTE		
4E-01	OFFICE	4E-21	MANAGER	4E-40	NOOK	4W-39	SUPER	4W-39	SUPER	426	STOR	444	OFFICE	465	TECH. ROOM		
4E-02	OFFICE	4E-22	OFFICE	4E-41	NOOK	4W-40	OFFICE	4W-40	OFFICE	427	M. RR	445	WELLNESS	465	TECH. ROOM		
4E-03	OFFICE			4E-42	OFFICE	4W-01	OFFICE	4W-01	OFFICE	405	RECEPTIONIST	446	WELLNESS	466	CLASSROOM		
				4W-02	OFFICE	406	CLASSROOM			406	CLASSROOM	447	JC.				

1	BID/PERMIT SET	09/23/2024
No.	Revisions / Submissions	Date

LWC
INCORPORATED

434 East First Street Dayton, OH 45402 937.223.6500
712 East Main Street Richmond, IN 47374 765.966.3546

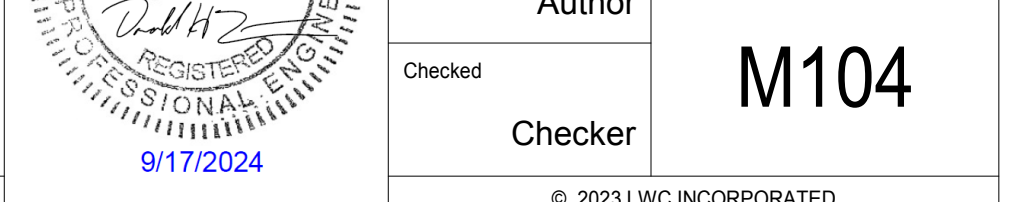
MONTGOMERY COUNTY
MONTGOMERY COUNTY JUVENILE COURT

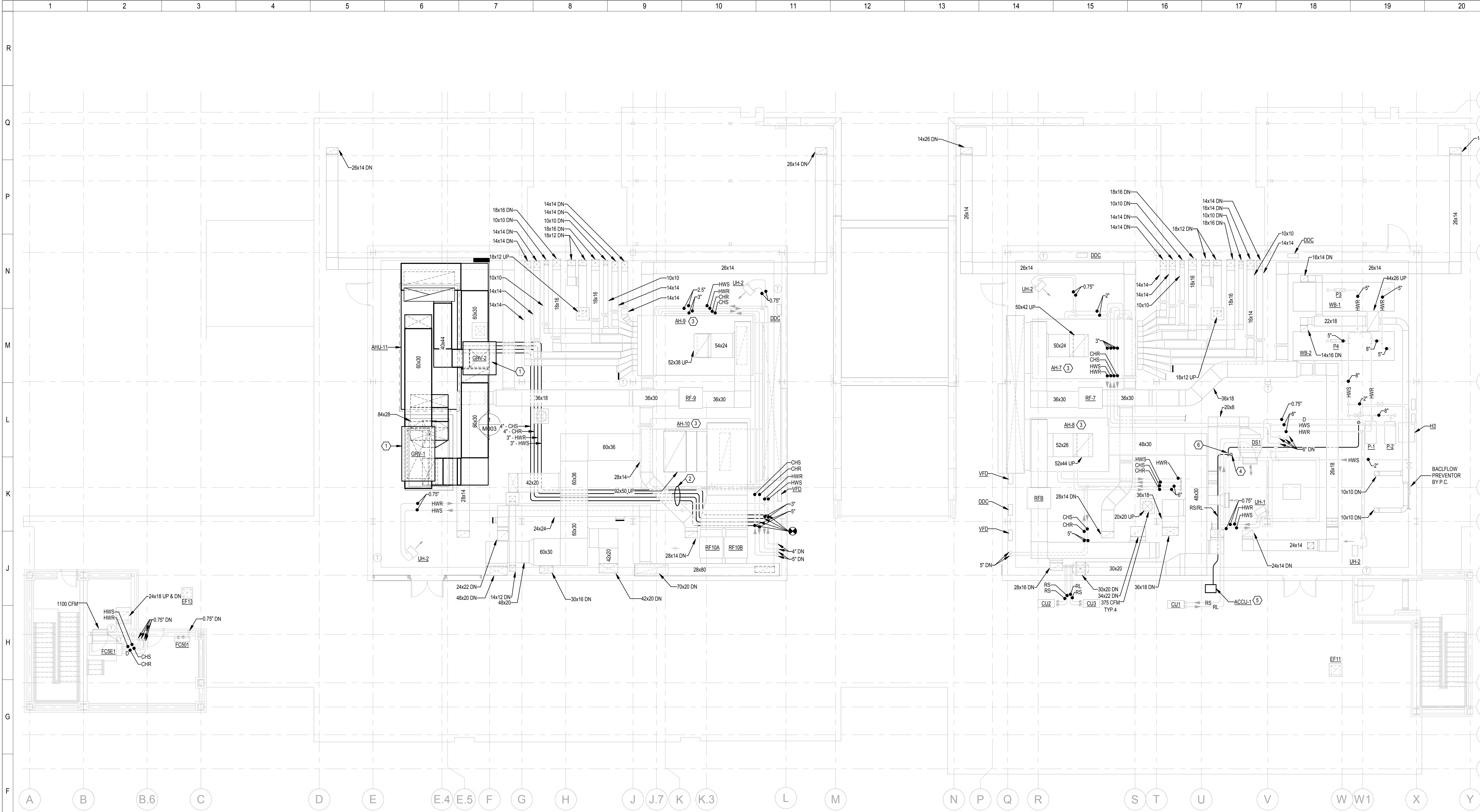
MONTGOMERY COUNTY JUVENILE COURT

380 W 2ND STREET, SUITE 1416
DAYTON, OHIO 45422

FOURTH FLOOR – NEW WORK

Comm. No.	Date	09.23.2024
23632.00		
Drawn	Author	M104
Checked	Checker	





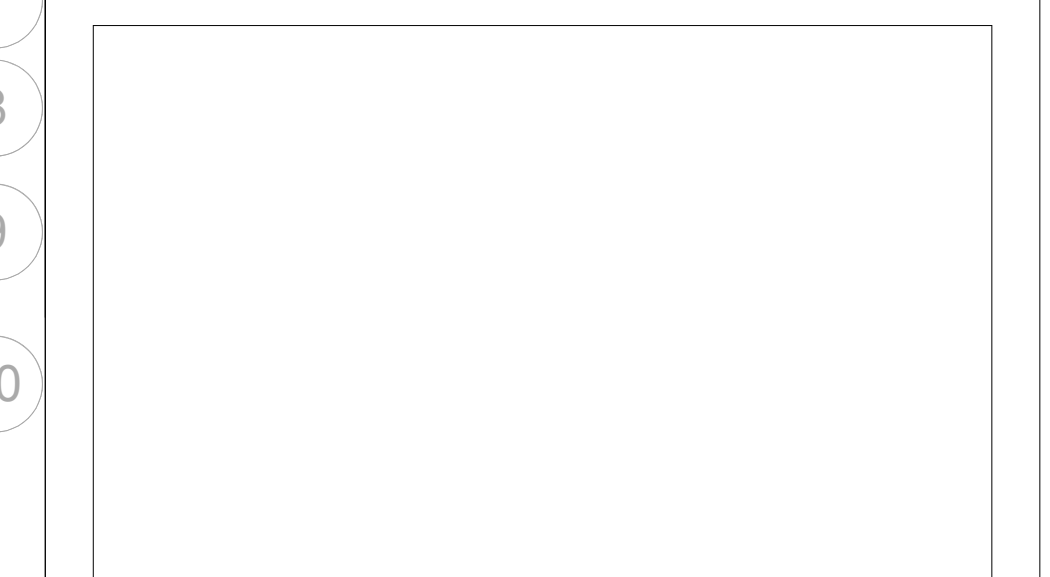
- SHEET NOTES:**
- GRV LOCATED ON ROOF ABOVE.
 - ROUTE NEW PIPING TO MAINTAIN EXISTING AHU CLEARANCE.
 - REBALANCE EXISTING AHU. REFER TO SCHEDULE ON SHEET M003.
 - REFRIGERANT LINES DOWN TO FLOOR BELOW. PROVIDE PIPING, SIZING, AND ACCESSORIES PER MANUFACTURER'S RECOMMENDATIONS. PROVIDE PROTECTIVE JACKETING ON PIPING EXPOSED TO OUTDOORS. ROUTE PIPING TO INDOOR EQUIPMENT ON FLOOR BELOW.
 - INSTALL CONDENSING UNIT ON ROOF MOUNTED EQUIPMENT RAILS AND SECURE TO WITHSTAND WIND LOAD REQUIREMENTS, AND PER MANUFACTURER'S RECOMMENDATIONS.
 - DRAIN LINE FROM FLOOR BELOW. ROUTE TO FLOOR DRAIN. TERMINATE WITH AIR GAP.

0.8
1
1.2
1.5
2
3
3.8
4
5
6
7
8
9
10

GENERAL NOTES:

A. NOTES HERE

KEY PLAN:



1 PENTHOUSE - NEW WORK
SCALE: 1/8" = 1'-0"

1	BID/PERMIT SET	09/23/2024
No.	Revisions / Submissions	Date

LWC
INCORPORATED
434 East First Street Dayton, OH 45402 937.223.6500
712 East Main Street Richmond, IN 47374 765.966.3546

MONTGOMERY COUNTY
MONTGOMERY COUNTY JUVENILE COURT
MONTGOMERY COUNTY JUVENILE COURT
380 W 2ND STREET, SUITE 1416
DAYTON, OHIO 45422

PENTHOUSE - NEW WORK

Comm. No.	23632.00	Date	09.23.2024
Drawn	Author	Drawn No.	
Checked	Author		M105
Checker			

