

Report By:

National TAB
1329 E. KEMPER ROAD
SUITE 4210
CINCINNATI, OH 45246

NATIONAL

TAB

Comfort. Under control.

Report: TAB REPORT
Function: Test, Adjust, & Balance
Date: 7/1/2022

PROJECT

06-06 LaRosa's (College Hill)

5830 Hamilton Ave

Cincinnati, OH 45224

Client

Captive-Aire Region #120

1329 E Kemper RD

Ste. 4210

Cincinnati, OH 45246

National TAB

Project: 06-06 LaRosa's (College Hill)

Table Of Contents

Section	Page #
Checklist Data	3
Checklist Data	4
Site Pictures	6
FAN - Exhaust	12
FAN - Supply	13
Kitchen Hood Type I	14



Comfort. Under control.

06-06 LaRosa's (College Hill)

CheckList Information

Name : INITIAL SITE WALKTHROUGH **Status :** Submitted

Assigned Organization : MULTIPLE **Asset :**

Requesting Organization : National TAB

CheckList Item Details

INITIAL SITE WALKTHROUGH

All diffusers and grilles are installed and match design?	Yes
All hood filters installed and accounted for?	Yes
Hoods are wired and have power?	Yes
Hood is free of alarms?	Yes
Thermostats have power?	Yes
Have trades/general contractor been notified about any issues and are they created on FaciliBuild?	

Notes/Comments :



Comfort. Under control.

06-06 LaRosa's (College Hill)

CheckList Information

Name : TEST ADJUST AND BALANCE **Status :** Submitted

Assigned Organization : MULTIPLE **Asset :**

Requesting Organization : National TAB

CheckList Item Details

TEST, ADJUST, AND BALANCE ALL EQUIPMENT:

DURING TESTING MAKE NOTE OF THE FOLLOWING:

Is space free of drafting?	SPACE IS FREE OF DRAFTING
Is space comfortable in all areas?	SPACE IS COMFORTABLE IN ALL AREAS
Is the space free of ventilation noise?	SPACE IS FREE OF VENTILATION NOISE

If deviations from design were necessary to resolve 1-3 what were they? Otherwise put "NA".

Notes/Comments :



Comfort. Under control.

06-06 LaRosa's (College Hill)

CheckList Information

Name : INITIAL SITE WALKTHROUGH **Status :** Submitted

Assigned Organization : MULTIPLE **Asset :**

Requesting Organization : National TAB

CheckList Item Details

INITIAL SITE WALKTHROUGH

All diffusers and grilles are installed and match design?	Yes
All hood filters installed and accounted for?	Yes
Hoods are wired and have power?	Yes
Hood is free of alarms?	Yes
Thermostats have power?	Yes
Have trades/general contractor been notified about any issues and are they created on FaciliBuild?	

Notes/Comments :



Comfort. Under control.

06-06 LaRosa's (College Hill)

CheckList Information

Name :	UNIT DATA AND EVALUATION	Status :	Submitted
Assigned Organization :	MULTIPLE	Asset :	
Requesting Organization :	National TAB		

CheckList Item Details

UNIT DATA AND EVALUATION WHILE GATHERING UNIT DATA CHECK THE FOLLOWING:

RTU's/AHU's

Economizers are assembled and functional?

DCV Max damper opening position is set to minimum?

Free cooling enthalpy set point set for lowest setting
(Typically "D")

Motors are all operating below the FLA rating?

Are belts tight?

If direct drive unit is the speed controller working.

Is gas piping installed and valves turned on?

Unit free of noticeable noise and vibration

EF's

Rotation is correct? Yes

Belts are tight?

Grease cup installed on hood fan? Yes

Hinge kit installed installed on hood fan? Yes

Lean fan back. Is grease duct installation adequate and is
duct ran all the way to the base of the fan? Yes

Flex conduit is long enough so that fan can be completely tilted back?	Yes
There is no major leakage around base of fan?	Yes
Is the motor operating below the motor FLA rating?	Yes
For restroom fan(s) is the back draft damper installed and can it fully open?	Yes
Unit free of noticeable noise and vibration?	Yes

MUA

Rotation is correct?	Yes
Gas piping is installed and valves are in on position?	Yes
Heater tested and is functional?	Yes
Internal motorized damper is fully opening?	Yes
Motor is operating below the FLA rating?	Yes
Unit free of noticeable noise and vibration?	Yes

HOODS

Kitchen equipment installed in proper places?	Yes
Can kitchen equipment be turned on for final smoke test?	Yes

DOCUMENTATION

Have trades/general contractor been notified about any issues and are they created on FaciliBuild?	Yes
--	-----

Notes/Comments :

LAROSA'S (COLLEGE HILL)

Friday, July 1, 2022

6 Issues Identified



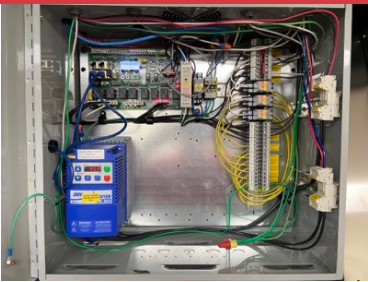
KEF 1



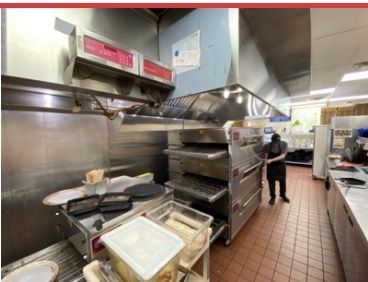
MUA



MUA DUCTWORK



HOOD CONTROL PANEL



HOOD 1



HOOD 1

LAROSA'S (COLLEGE HILL)

Friday, July 1, 2022

6 Issues Identified



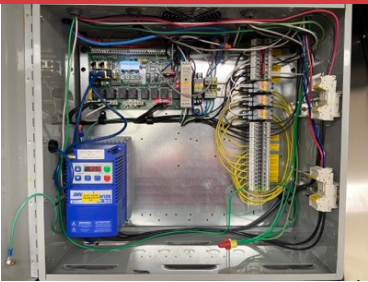
KEF 1



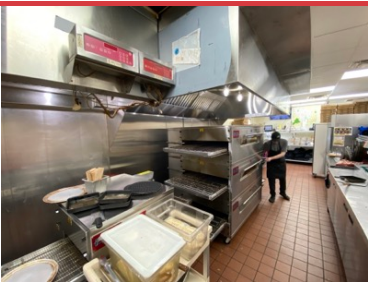
MUA



MUA DUCTWORK



HOOD CONTROL PANEL



HOOD 1



HOOD 1

National TAB

Project: 06-06 LaRosa's (College Hill)
System/Unit: FAN - Exhaust



Comfort. Under control.

Asset: EF1

AREA:HOOD 1

Unit Data		
	Design	Actual
MFG	ECON-AIR	ECON-AIR
Model Num	EADU85H	EADU85H
Serial Num	-	5389523
Type	-	UPBLAST
Configuration	-	VERTICAL

Test Data		
	Design	Actual
CFM	2000	2019
Fan RPM	1520	1534
Fan Rotation	-	CCW
Motor RPM	-	188
System SetPt	-	70%
RL Voltage	-	230
RL Amperage	-	4.6
Total ESP	1.2"	0.86"
Fan Inlet SP	-	-0.86"
Fan Discharge SP	-	ATM

Motor Data		
	Design	Actual
Motor MFG	-	TEAO-ECM
Frame	-	42
Horsepower	-	1.0
Motor Rpm	-	1800
Phase	-	1
Voltage (rated)	-	230
Amperage (rated)	-	6.5
Service Factor	-	1.0

Completed By: Austin McFall

Notes:

Asset	Notes

National TAB

Project: 06-06 LaRosa's (College Hill)
System/Unit: FAN - Supply



Comfort. Under control.

Asset: MAU1

AREA:

Unit Data		
	Design	Actual
MFG	ECON-AIR	ECON-AIR
Model Num	EA2-D.250-20D	EA2-D.250-20D
Serial Num	-	5389523
Type	-	MAU
Configuration	-	VERTICAL

Test Data		
	Design	Actual
CFM	-	1507
SF RPM	-	1348
Motor RPM	-	1755
SF System SetPt	-	45.8
RL Voltage	-	212/213/215
RL Amperage	-	6.9

Motor Data		
	Design	Actual
Motor MFG	-	ODP PREMIUM
Horsepower	-	3.0
Motor Rpm	-	1755
Phase	-	3
Voltage (rated)	-	230
Amperage (rated)	-	8.6
Service Factor	-	1.15

General		
	Design	Actual
Fan Rotation Correct	-	CORRECT

Gas Heat		
	Design	Actual
Heater Operates (y/n)	-	YES
Flame Status (pass/fail)	-	PASS
Inlet Air Temp SetPt	-	55
Discharge Air Temp SetPt	-	60
Air Flow Switch SP Actual	-	0.44"

Completed By: Austin McFall

Notes:

Asset	Notes

National TAB

Project: 06-06 LaRosa's (College Hill)

System/Unit: Kitchen Hood Type I



Comfort. Under control.

Asset: HD1

AREA:

Unit Data		
	Design	Actual
MFG	ECON-AIR	ECON-AIR
Model Num	EX-2-PSP-F	EX-2-PSP-F
Job / Serial Num	-	5389523
Type	-	TYPE I CANOPY
Hood length	-	120"
Hood Width	-	78"
Supply Plenum Type	-	PSP
Supply Plenum Width	-	14"
Supply Plenum Length	-	132"

Test Data Exhaust		
	Design	Actual
Filter Type	-	SS BAFFLE
Filter Size 1	-	16X16
Filter Size 2	-	-
Filter Qty 1	-	7
Filter Qty 2	-	-
Filter AK factor size 1	-	1.62
Filters AK factor size 2	-	-
Filter Total AK Area	-	11.34
Filter1 FPM	-	140
Filter2 FPM	-	180
Filter3 FPM	-	176
Filter4 FPM	-	233
Filter5 FPM	-	240
Filter6 FPM	-	156
Filter7 FPM	-	119
Filter Ave FPM(corr)	-	178
CFM	2000	2019

Cooking Equipment		
	Design	Actual
Item 1	-	PIZZA OVEN

Test Data Supply		
	Design	Actual
Total AK Area	-	12.83
Kv factor (Vel)	-	0.87
Num of Readings	-	10
Reading1 FPM	-	219
Reading2 FPM	-	134
Reading3 FPM	-	121
Reading4 FPM	-	194
Reading5 FPM	-	80
Reading6 FPM	-	147
Reading7 FPM	-	95
Reading8 FPM	-	72
Reading9 FPM	-	117
Reading10 FPM	-	169
Reading11 FPM	-	-
Reading12 FPM	-	-
Ave FPM(corr)	-	135
CFM	1600	1507

Performance Data		
	Design	Actual
Exh-Supply Net CFM	400	512
End Panels Installed (Y/N)	-	YES
Space Offset Temp Riser 1	-	20
Riser Temp F (idle) Riser 1	-	115.8F
Ambient Room Temp	-	74.5F

General		
	Design	Actual

Completed By: Austin McFall

Notes:

Asset	Notes