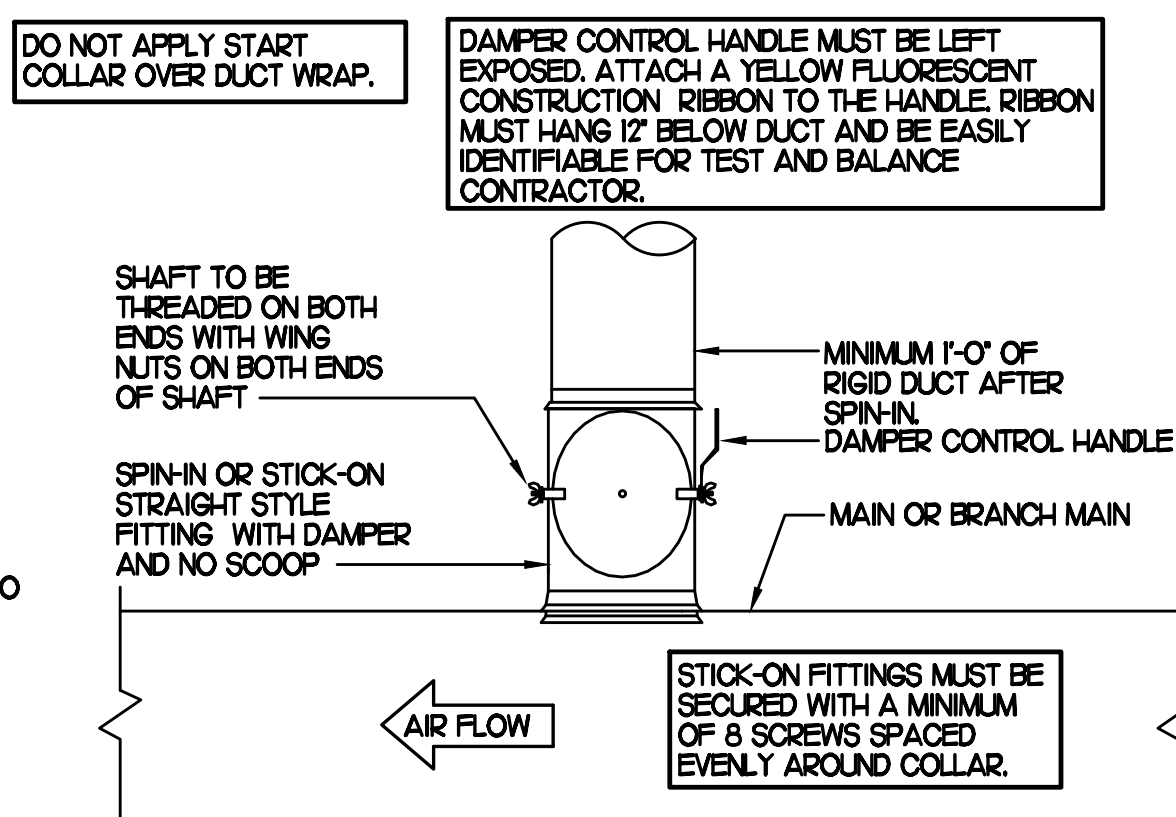


1 SAG/RAG/GRILLE TAKE-OFF

NO SCALE



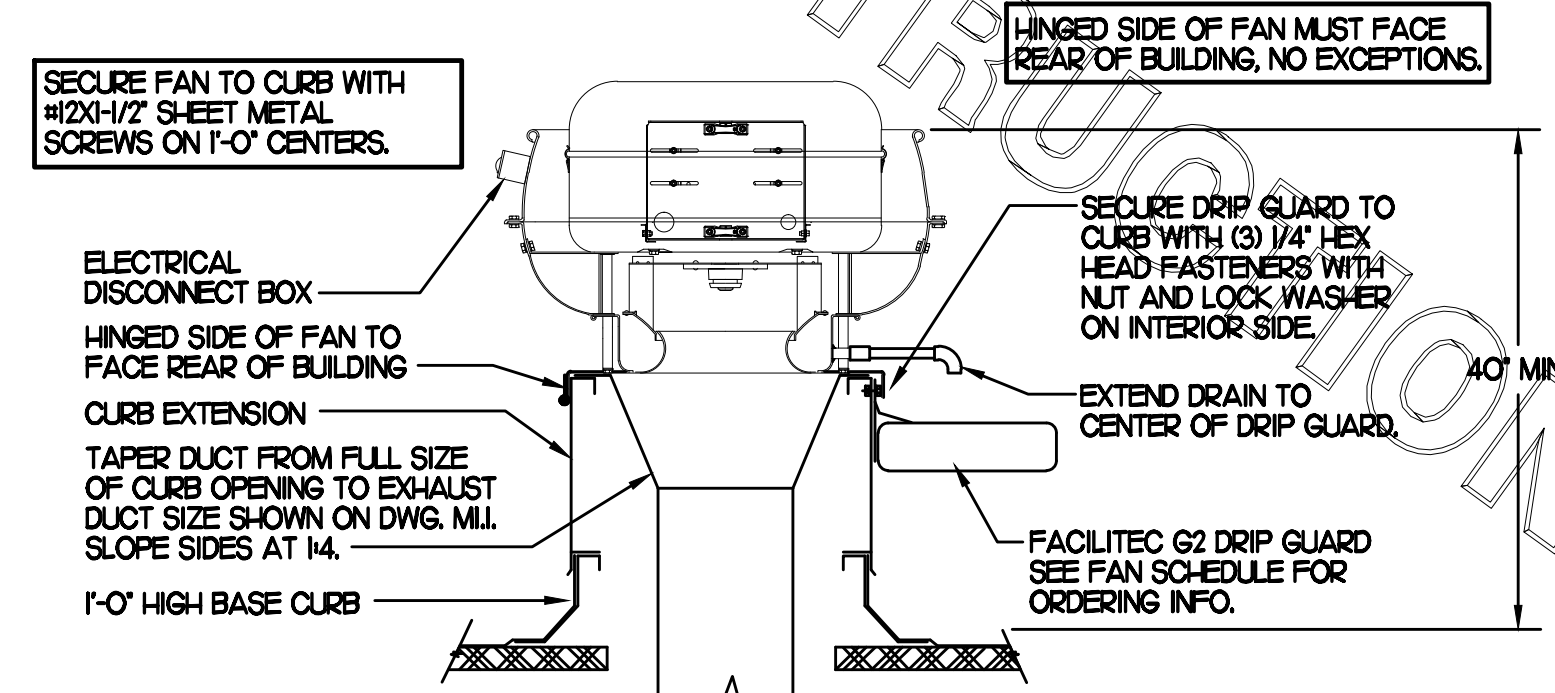
2 START COLLAR

NO SCALE

ELECTRIC ROOFTOP A/C UNIT SCHEDULE																
MARK	TONS	COOLING CAPACITY (MBH)		HEATING CAPACITY (MBH)		FAN SECTION (CFM)			MODEL	MOCP	MCA	MANUFACTURER	RATINGS	SERVING	REMARKS	
		TOTAL	SENS	KW	BTUH (INPUT)	SUPPLY	O.A.	HP								ESP
AC#1	15.0	186.6	143.9	30	-	5350	1200	3	0.70	LCH804B	110	106	LENNOX	12 EER, 13 IEER	KITCHEN	1,35,7,8,9,10,11,13
AC#2	12.5	145.7	93.5	30	-	4240	1005	3	0.70	LCH8054B	100	95	LENNOX	12 EER, 13 IEER	DINING A	2,3,5,7,8,9,10,11,13
AC#3	12.5	145.7	93.5	30	-	4140	1005	3	0.70	LCH8054B	100	95	LENNOX	12 EER, 13 IEER	DINING B	1,3,5,7,8,9,10,11,13
AC#4	5.0	50.7	37.1	15	-	1800	400	1	0.70	LCH0604E	80	80	LENNOX	12.7 EER, 17 IEER	PLAY AREA	3,4,5,8,9,10,11,13

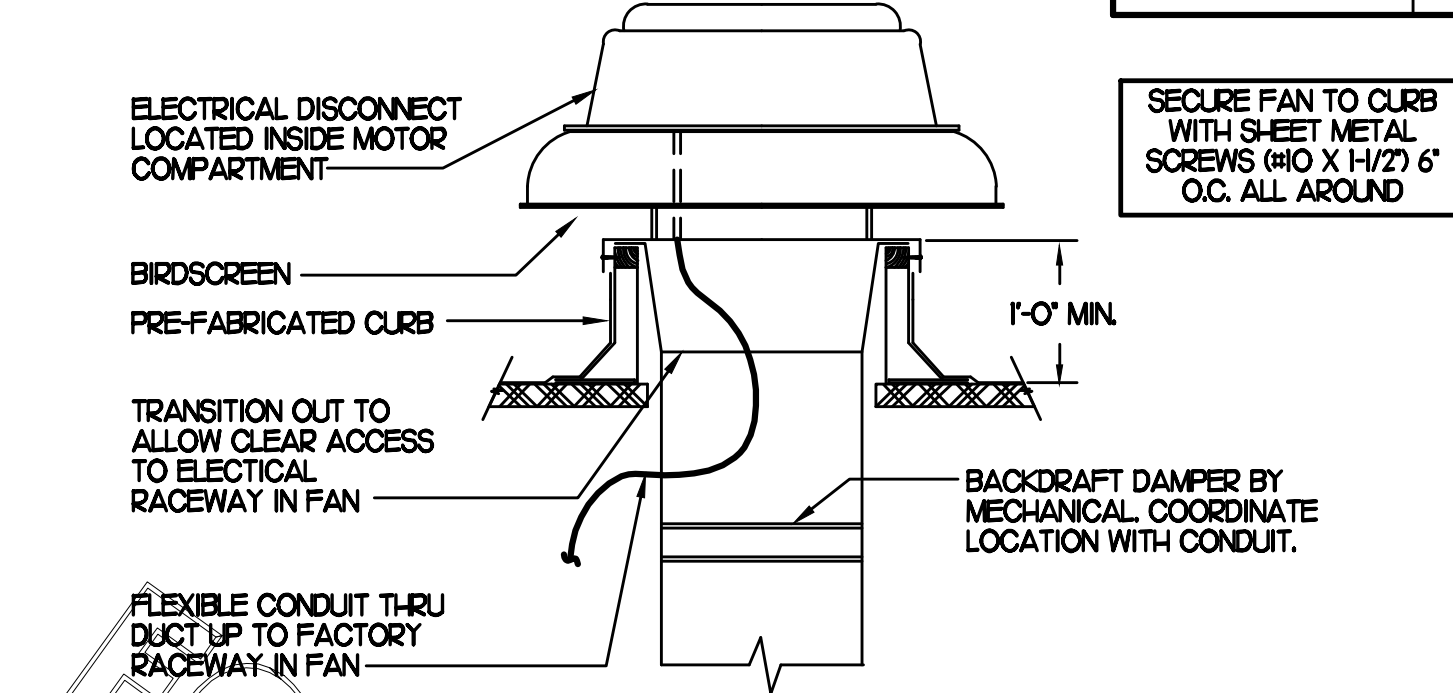
NOTES:
 * COOLING CAPACITIES ARE GROSS, BASED ON INDOOR 75°FDB/62°FWB, OUTDOOR 95°FDB/75°FWB.
 * CHICK-FIL-A MAINTAINS A NATIONAL ACCOUNT FOR EQUIPMENT WITH LENNOX CORPORATION. CONTACT LENNOX NATIONAL ACCOUNTS AT 972-497-5260 (OR BY FAX AT 972-497-5112) FOR PRICING, ORDERING AND AVAILABILITY.

REMARKS:
 1) PROVIDE DIFFERENTIAL ENTHALPY ECONOMIZER WITH POWER EXHAUST.
 2) PROVIDE DIFFERENTIAL ENTHALPY ECONOMIZER WITH BAROMETRIC EXHAUST.
 3) PROVIDE 14\"/>



3 KITCHEN HOOD EXHAUST FAN

NO SCALE



4 RESTROOM EXHAUST FAN

NO SCALE

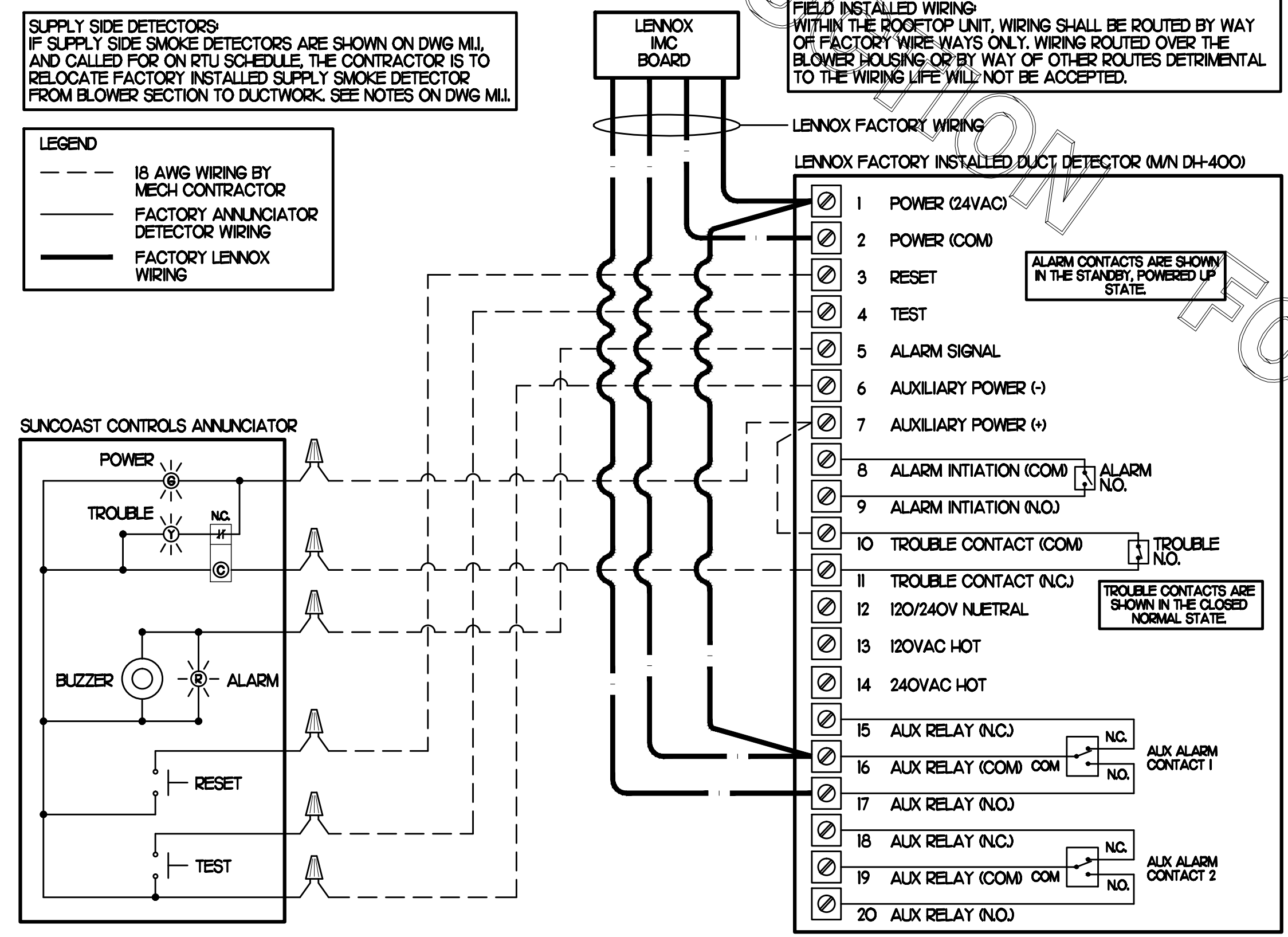
EXHAUST FAN SCHEDULE										
MARK	CFM	ESP	RPM	TIP SPEED (FFM)	HP	AREA SERVED	MODEL	MANUFACTURER	REMARKS	
EF#1	1,700	3/4	1,82	464	1/2	HOOD#1	150VSB	LOREN COOK	1,2,3,4,5,6,12	
EF#2	1,400	3/4	1,62	509	1/2	HOOD#2 & HOOD#3	165VSB	LOREN COOK	1,2,3,4,5,6,12	
EF#3	400	3/8	1,433	3423	1/8	RESTROOMS	ACED-90C15H	LOREN COOK	2,7,8,9,10,11,12	

NOTES:
 * GREASE EXHAUST FAN RPM BASED ON 80 DEGREE F AIR AT 1000 FEET ABOVE SEA LEVEL.
 * GREASE EXHAUST FANS TO BE UL 762 LISTED.

REMARKS:
 1) PROVIDE FACTORY 1\"/>

OUTSIDE AIR CALCULATIONS									
ROOM NAME	AREA SQ. FT.	NO. OF PEOPLE	OSA CFM / PERSON	OSA CFM / SQ FT	TOTAL OSA	TOTAL OSA AC#1	TOTAL OSA AC#2	TOTAL OSA AC#3	TOTAL OSA AC#4
KITCHEN	95	4	7.50	0.18	194.7	194.7			
OFFICE	60	1	5.0	0.06	8.6	8.6			
ELECTRICAL ROOM	36	0	0	0.06	2.2	2.2			
DINING A	525	40	7.50	0.18	394.5		394.5		
ENTRY A	50	0	0.00	0.06	3.0		3.0		
MECH ROOM	40	0	0.00	0.06	2.4		2.4		
MENS	90	0	0.00	0.00	0.0		0.0		
MULTI PURPOSE	150	1	7.50	0.00	34.5		34.5		
RR VESTIBULE	55	0	0.00	0.06	3.3		3.3		
WOMENS	115	0	0.00	0.00	0.0		0.0		
DINING B	860	60	7.50	0.18	604.8			604.8	
DRIVE THRU	105	1	7.50	0.18	26.4			26.4	
ENTRY B	60	0	0.00	0.06	3.6			3.6	
SERVING	200	2	7.50	0.18	51.0			51.0	
PLAY AREA	320	12	0.0	0.30	96.0				96.0
TOTALS					OSA REQUIRED	205.5	437.7	685.8	96.0
					ACTUAL AHU OSA	1200	1105	1105	400

NOTES:
 ① ESTIMATED MAXIMUM OCCUPANCY AND REQUIRED OUTSIDE AIR BASED ON THE 2007 FLORIDA MECHANICAL CODE TABLE 403.3 AND ASHRAE 62-2007.
 ② ROOM OCCUPANCY BASED ON SEAT COUNT ON ARCHITECTURAL PLAN.



5 SMOKE DETECTOR AND ANNUNCIATOR WIRING DIAGRAM

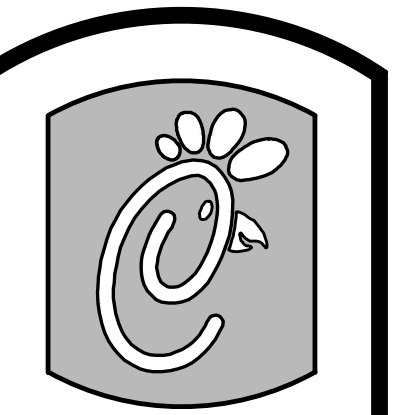
NO SCALE

AIR DEVICE SCHEDULE						
MARK	DESCRIPTION	LOCATION	NECK SIZE	FACE SIZE	FRAME TYPE	REMARKS
A	TITUS MODEL PSS-AA ALUMINUM SUPPLY AIR DIFFUSER WITH AIR PATTERN CONTROLLER.	DINING AREA KITCHEN	SEE PLAN	24X24	LAY-IN	1,8,9
C	TITUS MODEL MCD STEEL SUPPLY AIR DIFFUSER FIELD ADJUSTABLE AIR PATTERN CONTROLLERS.	ENTRY 'A' ENTRY 'B'	14X14	19X9	SURFACE	1,3,5,7,9
D	TITUS MODEL 272FS DOUBLE DEFLECTION ALUMINUM SIDEWALL SUPPLY GRILLE FRONT BLADE PARALLEL TO SHORT SIDE.	MECH/ELECT ROOM	8X6	10X8	SURFACE	1,9
E	TITUS MODEL 272FL DOUBLE DEFLECTION ALUMINUM SIDEWALL SUPPLY GRILLE FRONT BLADE PARALLEL TO LONG SIDE.	PLAYGROUND	18X12	20X14	SURFACE	1,9
F	DONCO MODEL CPDF EGGRATE RETURN AIR GRILLE WITH REMOVABLE WHITE CORE, FACTORY FLAT BACKPAN AND ROUND NECK.	DINING/OFFICE KITCHEN	SEE PLAN	24X24	LAY-IN	1,7,9
G	TITUS MODEL 56FL ALUMINUM SIDEWALL RETURN GRILLE, FRONT BLADE PARALLEL TO LONG SIDE.	MECH/ELECT ROOM	8X6	10X8	SURFACE	1,9
H	TITUS MODEL TMR-AA ALUMINUM CONCENTRIC ROUND CONE SUPPLY DIFFUSER.	OFFICE	10	18	LAY-IN	1,6,7,9
J	TITUS MODEL MCD STEEL SUPPLY AIR DIFFUSER FIELD ADJUSTABLE AIR PATTERN CONTROLLERS.	RESTROOMS	10X10	15X15	SURFACE	1,2,3,5,7,9
	TITUS MODEL PAR STEEL PERFORATED FACE RETURN AIR GRILLE WITH OBD.	RESTROOMS ENTRY 'A' & 'B'	14X14	16X16	SURFACE	1,4,9
	TITUS MODEL 56FL ZERO DEGREE DEFLECTION ALUMINUM SIDEWALL RETURN GRILLE FRONT BLADE PARALLEL TO LONG SIDE.	PLAYGROUND	16X16	18X18	SURFACE	1,9

REMARKS:
 1) STANDARD OFF WHITE FINISH.
 2) PROVIDE MODEL AG-85 NECK DAMPER.
 3) SEE DRAWING MJI FOR THROW.
 4) PROVIDE MODEL AG-75 NECK DAMPER ON GRILLES IN RESTROOMS.
 5) FIELD FABRICATE 8\"/>

AIR DOOR SCHEDULE								
MARK	CFM	VELOCITY	HEATING CAP	HP	AREA SERVED	MODEL	MANUFACTURER	REMARKS
AD#1	750	3,050	7.2 KW	1/5	DRIVE THRU	MP1-30E	POWERED-AIRE	12,4
AD#2	3,384	4,000	NA	3/4	REAR DOOR	BCT1-42	POWERED-AIRE	3,4

REMARKS:
 1) FACTORY PROVIDED REMOTE MOUNTED HEAT/ONALTO CONTROLS.
 2) FACTORY PROVIDED, UNIT MOUNTED SPEED CONTROLLER.
 3) FACTORY PROVIDED SEC-ALARM SM-226R MAGNETIC CONTACT WITH FACTORY INSTALLED LOW VOLTAGE CONTROLS LOCATED IN AIR DOOR CABINET.
 4) CHICK-FIL-A HAS A NATIONAL ACCOUNT WITH TOM BARRROW COMPANY FOR THE AIR DOORS. THE MECHANICAL CONTRACTOR SHALL PURCHASE THE AIR DOORS DIRECTLY FROM TOM BARRROW COMPANY. CONTACT MR. SCOTT GEORGE AT 404-351-1010 FOR PRICING AND AVAILABILITY. AIR DOORS NOT PURCHASED THRU TOM BARRROW COMPANY WILL NOT BE ACCEPTED.



5200 Buffington Rd.
 Atlanta Georgia,
 30349-2998

Revisions:
 Mark Date By
 2 06/15/11 GAB
 PLAN REVIEW COMMENTS

Seal

MALCOLM RUSSO, P.E.

AA 003420
 CA 8660
 604 COURTLAND STREET
 SUITE 100
 ORLANDO, FLORIDA 32810
 PH 407 645 5008
 FX 407 629 9124

INTERPLAN
 ARCHITECTURE
 ENGINEERING
 INTERIOR DESIGN
 PROJECT MANAGEMENT

STORE
 ROYAL PALM BEACH
 508E (FSU)

206 SOUTH STATE ROAD
 WEST PALM BEACH,
 FL 33411

SHEET TITLE
 HVAC DETAILS
 & SCHEDULES

VERSION: 4
 ISSUE DATE: 7-2009

Job No. : 09.0590
 Store : 2621
 Date : 11/24/09
 Drawn By :
 Checked By :
 Sheet

M-3.I

(146 MPH WINDSPEED)

PROVIDE 4-22 GA.- 1 1/8" WIDE HURRICANE STRAPS PER A/C UNIT.

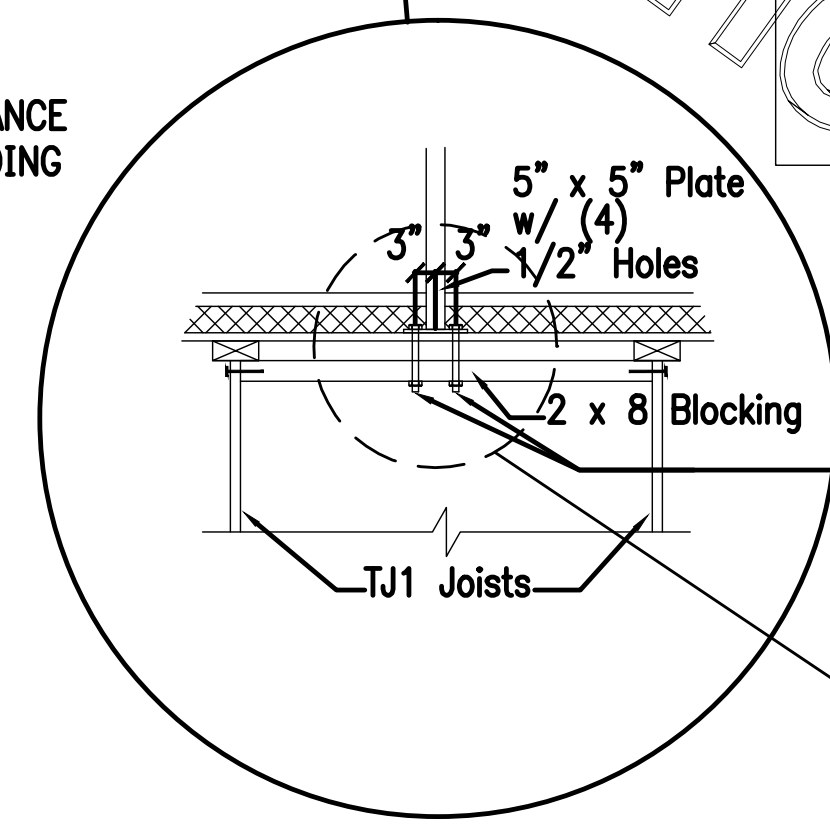
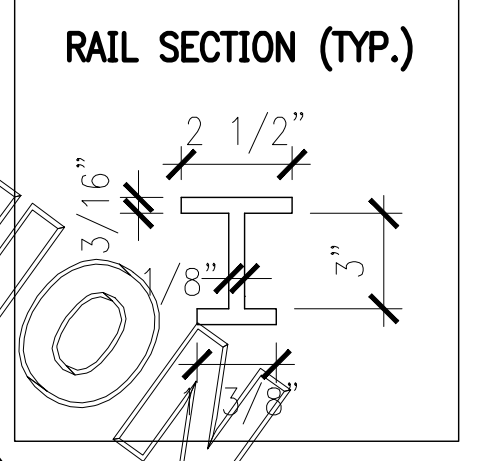
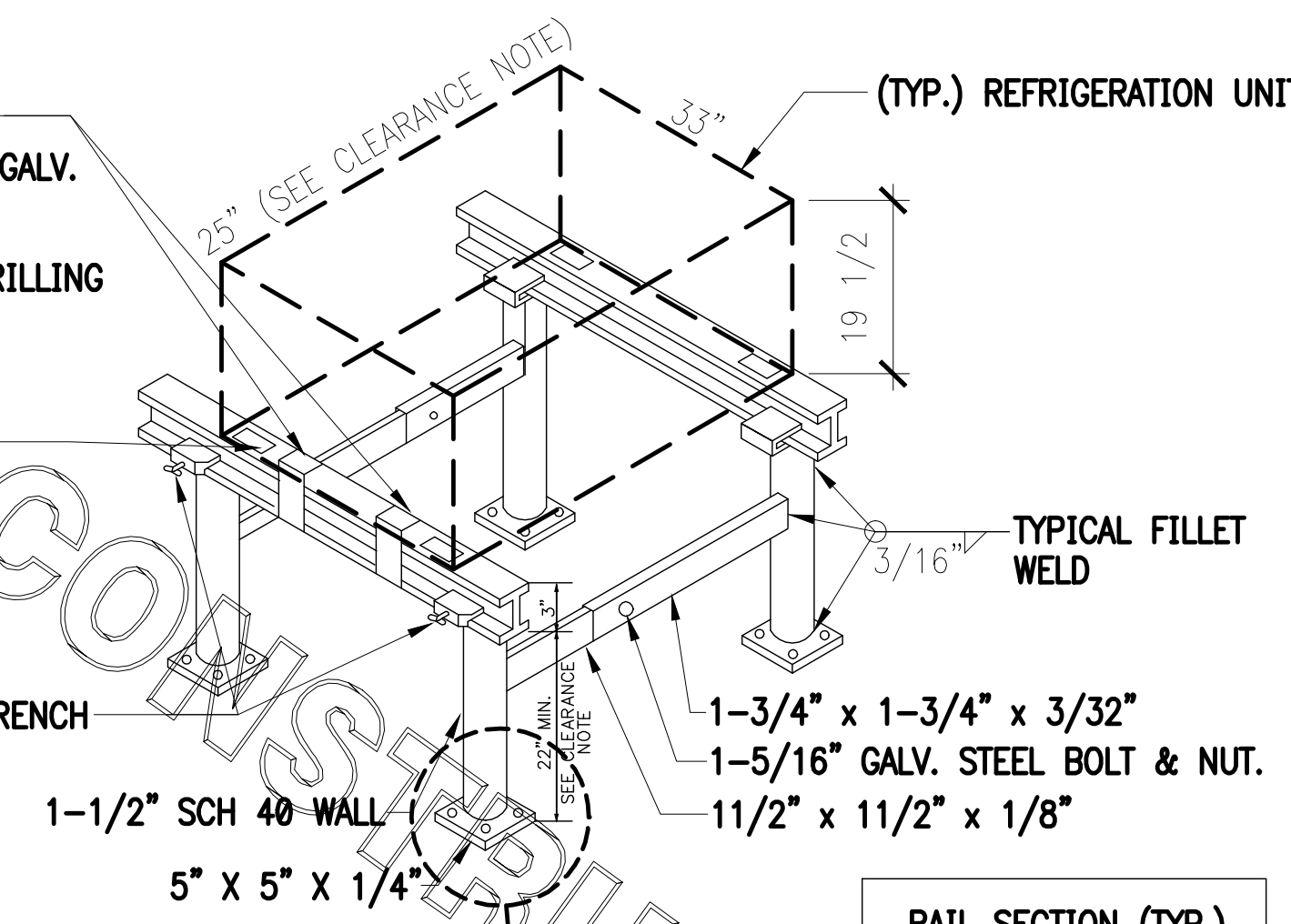
- A.) 2-3/8" X 3/4" LONG A307 STEEL GALV. BOLTS AND NUTS FASTENED TO WEB OF ALUMINUM STAND RAIL
- B.) 3-10-16 X 3/4" HW #3 SELF DRILLING HILTI KWIK-FLEX SCREWS TO WEB OF ALUMINUM STAND RAIL

PAD (TYP.) BY A/C CONTRACTOR
 EXAMPLES :
 RUBBER VIBRATION PAD
 (RP. 3/4" - 2"x2")
 (RP. 3/8" - 2"x2")

1/4" X 3/4" GALVANIZED STEEL THUMBSCREW TIGHTEN WITH TORQUE WRENCH TO REFUSAL.

NOTES:

- 1.) ALL CONSTRUCTION TO MEET ALUMINUM ASSOCIATION SPECS.
- 2.) VIBRATION INSULATOR PADS SHALL BE PROVIDED BY THE A/C CONTRACTOR SO AS NOT TO CAUSE VIBRATION TO EXISTING SUB-STRUCTURE.
- 3.) ALUMINUM EQUIPMENT STAND SUPPORTS AS MANUFACTURED BY AVCOA CORPORATION OF FORT LAUDERDALE, FLA. OR APPROVED EQUAL STANDS SHALL PROVIDE 18" MINIMUM CLEARANCE AND SHALL BE SIZED AND INSTALLED ACCORDING TO THE MANUFACTURERS LOAD CHARTS AND PRINTED INSTALLATION DETAILS. CONTACT: (800) 266-7212
- 4.) STRAP DOWN UNITS WITH 22 GAUGE STRAPS AT 4 CORNERS WITH TEK SCREWS



1/2" x 10" Grade 8 Bolts w/ Grade 8 washers & 1/2" Grade 8 Nuts (4 per post)

SEE II/A1.8

1 REFRIGERATION SYSTEM FRAMING SUPPORT DETAIL

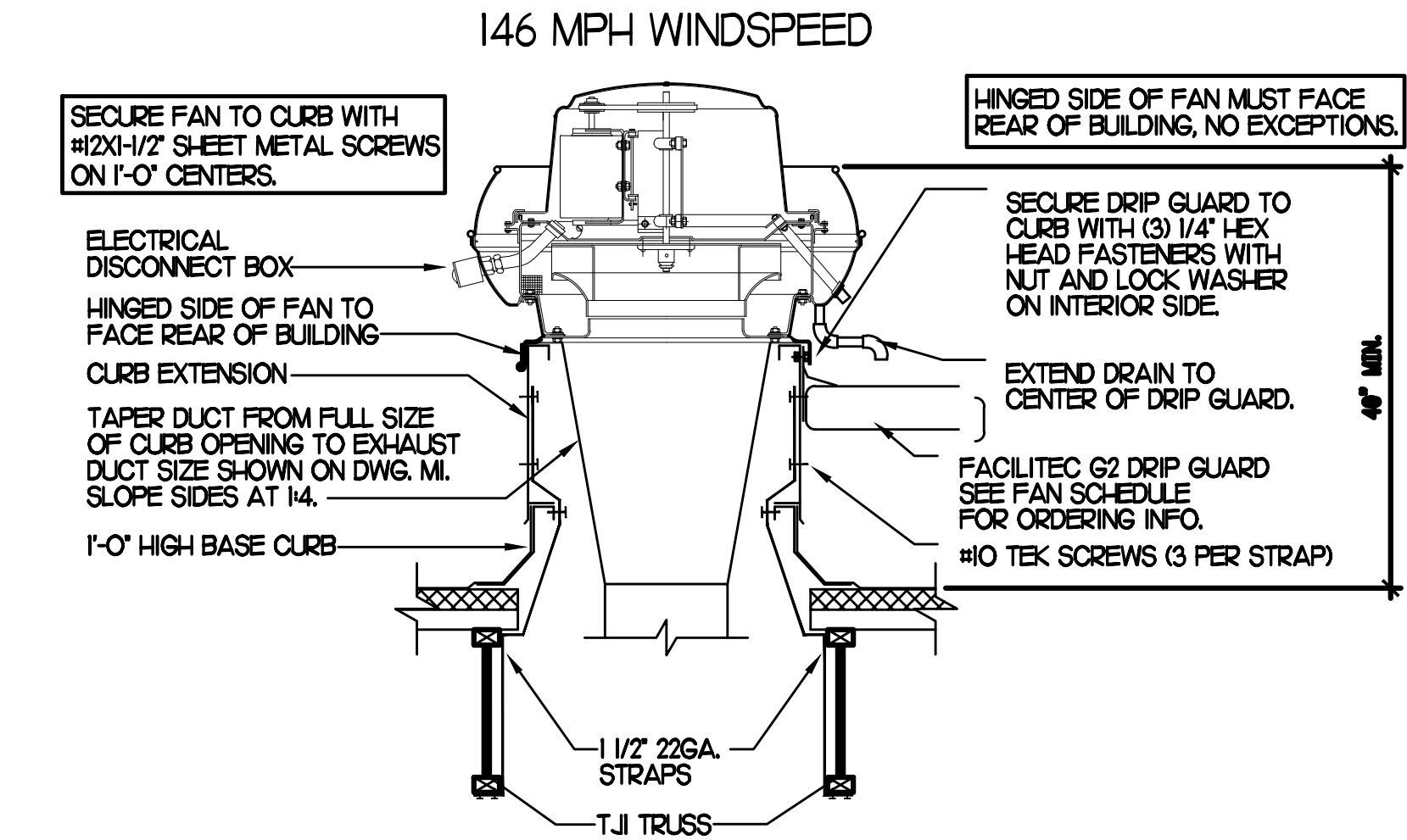
NO SCALE

2 NOT USED

NO SCALE

3 TYPICAL FAN TIE-DOWN SYSTEM DETAIL

NO SCALE

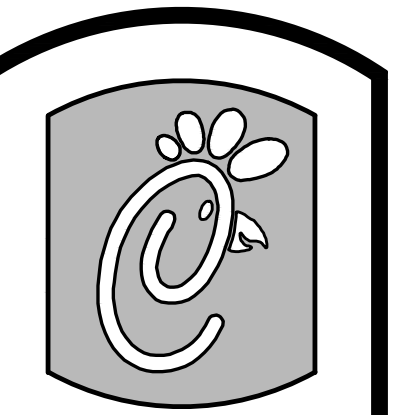


CONTROL SEQUENCE OF OPERATIONS:

- AC-1, AC-2, AC-3, & AC-4:**
- DAY CYCLE - COOLING**
1. SUPPLY AIR FAN SHALL RUN CONTINUOUSLY.
 2. OUTSIDE AIR DAMPER SHALL BE IN MINIMUM POSITION.
 3. THERMOSTAT SHALL CYCLE COMPRESSOR(S) TO MAINTAIN ROOM SET TEMPERATURE.
- DAY CYCLE - HEATING**
1. SUPPLY AIR FAN SHALL RUN CONTINUOUSLY.
 2. OUTSIDE AIR DAMPER SHALL BE IN MINIMUM POSITION.
 3. THERMOSTAT SHALL CYCLE GAS HEATER TO ACHIEVE ROOM SET TEMPERATURE.
- MORNING WARM-UP**
1. SUPPLY AIR FAN SHALL RUN CONTINUOUSLY.
 2. OUTSIDE AIR DAMPER SHALL BE IN CLOSED POSITION.
 3. THERMOSTAT SHALL CYCLE RTU TO REACH ROOM SET TEMPERATURE.
 4. WHEN SET TEMPERATURE IS REACHED COOLING OR HEATING CYCLE SHALL COMMENCE.
- NIGHT SETBACK**
1. OUTSIDE AIR DAMPER SHALL BE IN CLOSED POSITION.
 2. THERMOSTAT SHALL CYCLE EITHER COOLING OR HEATING AND SUPPLY AIR FAN TO MAINTAIN ROOM SET TEMPERATURE.
- SMOKE DETECTOR**
1. WHEN DUCT SMOKE DETECTOR LOCATED IN RTU IS ACTIVATED SUPPLY AIR FAN SHALL SHUTDOWN.
 2. RTU SHALL DEACTIVATE THE REFRIGERATION AND/OR THE HEATING SYSTEMS.
 3. ALARM SIGNAL IS SENT TO THE FIRE ALARM PANEL.
 4. SUPPLY AIR FAN SHALL BE MANUALLY RESET.

4 CONTROL SEQUENCE OF OPERATIONS

NO SCALE



Chick-fil-e

5200 Buffington Rd. Atlanta Georgia, 30349-2998

Revisions:

Mark	Date	By
6	09/11/11	
		PLAN REVIEW
		COMMENTS

Seal

MALCOLM RUSSO, P.E.

AA 003420 CA 8660
 604 COURTLAND STREET SUITE 100
 ORLANDO, FLORIDA 32810
 PH 407 645 5008
 FX 407 629 9124

INTERPLAN
 ARCHITECTURE
 ENGINEERING
 INTERIOR DESIGN
 PROJECT MANAGEMENT

STORE ROYAL PALM BEACH 508E (FSU)

206 SOUTH STATE ROAD WEST PALM BEACH, FL 33411

SHEET TITLE MECHANICAL DETAILS

VERSION: 4
ISSUE DATE: 7-2009

Job No. : 09.0590
 Store : 2621
 Date : 11/24/09
 Drawn By :
 Checked By :

Sheet

M-3.2

