

TAB Punchlist CFA 05658 Franklin

Prepared by Will Turnbough

Feb 5, 2026

Description

8 tasks in this report.

Contents

#66 [DUCT 999] [NEW] Takeoff and flex duct installation	2
#65 [EXHA 510] [NEW] Grease exhaust duct is not supported.	3
#64 [UNIT 014] [NEW] CRITICAL – AC-5 curb/RTU alignment.	4
#63 [DUCT 499] [NEW] 90 degree transitions on drops	5
#62 [DUCT 017] [NEW] CRITICAL – Duct not installed per plans.	7
#61 [HOOD 006] [NEW] CRITICAL – Improper hood height.....	8
#60 [UNIT 999] [NEW] AC-5 excess roofing material in supply drop	10
#59 [UNIT 999] [NEW] AC-1 door	11

#66 [DUCT 999] [NEW] Takeoff and flex duct installation

Status

Open

Created

Feb 5, 2026 9:30 AM
will@nationaltab.com

Type

Planned Work

Last Updated

Feb 5, 2026 9:31 AM

List

TAB Punch List

Description

The takeoff and flex ductwork is in progress. But ensure that details on the plans are reviewed. See detail 1 on M501. And note N on M-001, section 2.02 ductwork. Also ensure that there is mastic at connection of diffuser to the duct and that the insulated tops of the diffusers are taped to the duct insulation.

#65 [EXHA 510] [NEW] Grease exhaust duct is not supported.

Status

Open

Created

Feb 5, 2026 9:25 AM
will@nationaltab.com

Type

Planned Work

Last Updated

Feb 5, 2026 9:31 AM

List

TAB Punch List

Description

Supports should be installed per detail 6 on M-M501.
Review keyed notes 2 & 5.

Photos

Screenshot 2026-02-05 092252

Will Turnbough

Feb 5, 2026 9:30 AM

#64 [UNIT 014] [NEW] CRITICAL – AC-5 curb/RTU alignment.

Status
Open

Created
Feb 5, 2026 9:21 AM
will@nationaltab.com

Type
Planned Work

Last Updated
Feb 5, 2026 9:31 AM

List
TAB Punch List

Description
AC-5 duct does not appear aligned at the curb and the duct does not open to the full size of the opening at the RTU.

Photos



Screenshot 2026-02-05 090802

Will Turnbough

Feb 5, 2026 9:21 AM

#63 [DUCT 499] [NEW] 90 degree transitions on drops

Status

Open

Created

Feb 5, 2026 9:20 AM
will@nationaltab.com

Type

Planned Work

Last Updated

Feb 5, 2026 9:31 AM

List

TAB Punch List

Description

Some supply and return drops have a short radius on the heel and a mitered fitting on the throat. Typically CFA wants mitered fitting with turning vanes or a radius that follows $R = W$. However that is not stated in this spec. Turning vanes are installed on all supply drops which is correct for mitered fittings. Confirm with engineer that what is installed will be adequate.

Photos



Screenshot 2026-02-05 091128

Will Turnbough

Feb 5, 2026 9:20 AM

#62 [DUCT 017] [NEW] CRITICAL – Duct not installed per plans.

Status

Open

Created

Feb 5, 2026 9:09 AM
will@nationaltab.com

Type

Planned Work

Last Updated

Feb 5, 2026 9:31 AM

List

TAB Punch List

Description

Ductwork in progress. Not all diffusers installed for AC-4 yet.

Photos



Screenshot 2026-02-05 090802

Will Turnbough

Feb 5, 2026 9:09 AM

#61 [HOOD 006] [NEW] CRITICAL – Improper hood height.

Status

Open

Created

Feb 5, 2026 9:06 AM
will@nationaltab.com

Type

Planned Work

Last Updated

Feb 5, 2026 9:31 AM

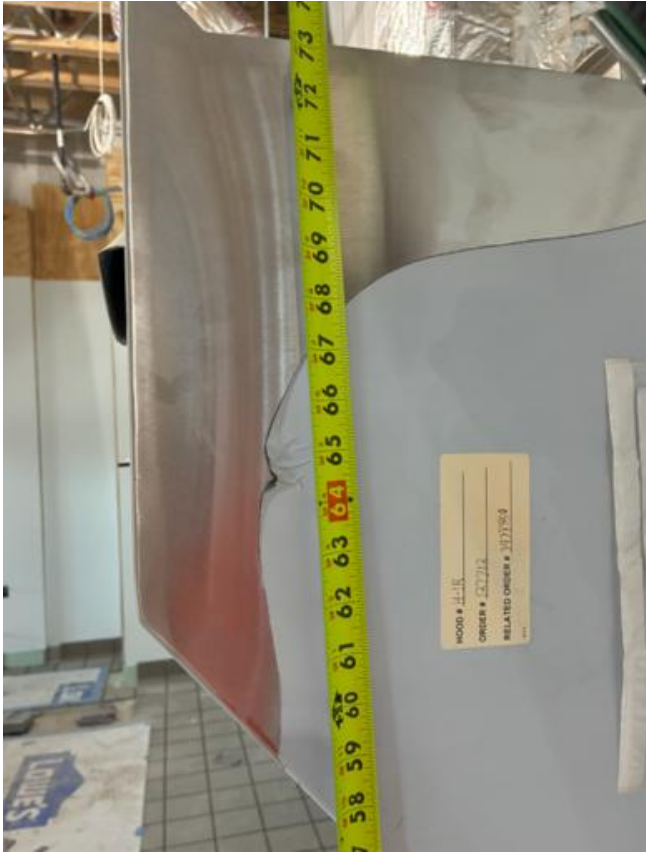
List

TAB Punch List

Description

Hoods not hung to design measurements from Halton shop drawing. Review hood height and make duct adjustments in riser to accommodate. Hood 1 measured at 62.5" AFF

Photos



Screenshot 2026-02-05 090647

Will Turnbough

Feb 5, 2026 9:07 AM

#60 [UNIT 999] [NEW]AC-5 excess roofing material in supply drop

Status

Open

Created

Feb 5, 2026 9:04 AM
will@nationaltab.com

Type

Planned Work

Last Updated

Feb 5, 2026 9:31 AM

List

TAB Punch List

Description

Excess roofing material in the drop for AC-5. This needs to be cut back prior to TAB.

Photos

Screenshot 2026-02-05 090315

Will Turnbough

Feb 5, 2026 9:04 AM

#59 [UNIT 999] [NEW] AC-1 door

Status

Open

Created

Feb 5, 2026 9:00 AM
will@nationaltab.com

Type

Planned Work

Last Updated

Feb 5, 2026 9:31 AM

List

TAB Punch List

Description

AC-1 access door needs to
be properly aligned

Photos

L05658_Franklin FSU (IN)

2430 North Morton Street, Franklin, Indiana

L1020005658



Screenshot 2026-02-05 085958

Will Turnbough

Feb 5, 2026 9:01 AM
