

Report By:

NATIONAL  **TAB**

National TAB
1329 E Kemper Rd, Ste 4210
Cincinnati, OH 45246

Report: Test and Balance
Date: 5/11/2021

PROJECT
CW 3501 - SONY FUNIMATION (IRVING, TX)

3501 OLYMPUS BLVD
IRVING, TX

Client

Billingsley
1722 Routh St.
Suite 770
Dallas, TX 75201

Powered by



FACILIBUILD

www.facilibuild.com

National TAB

Project: CW 3501 - SONY FUNIMATION (IRVING, TX)

Table Of Contents

Section	Page #
Certification	3
Equipment Calibrations	4
Abbreviations	5
Summary Data	6
GRD Layout	7
Fan Coil	9



CERTIFICATION

PROJECT: CW 3501 - SONY FUNIMATION (IRVING, TX)

The data presented in this report is a record of system measurements and final adjustments that have been obtained in accordance with the current edition of the NEBB *Procedural Standards for Testing, Adjusting, and Balancing of Environmental Systems*. Any variances from design quantities, which exceed NEBB tolerances, are noted in the Test-Adjust-Balance Report Project Summary.

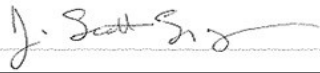
The air distribution system has been tested and balanced and final adjustments have been made in accordance with NEBB standards and the project specifications.

NEBB TAB FIRM: National TAB-Southeast
REGISTRATION NO: 3755
CERTIFIED BY: J. Scott Springer 23312
DATE: 5/10/2021

The hydronic distribution system has been tested and balanced and final adjustments have been made in accordance with NEBB standards and the project specifications.

NEBB TAB FIRM: National TAB-Southeast
REGISTRATION NO: 3086
CERTIFIED BY: J. Scott Springer 23312
DATE: _____

Submitted and Certified by:

NEBB TAB FIRM: National TAB-Southeast
TAB PROFESSIONAL: J. Scott Springer
SIGNATURE: 
REGISTRATION NO: 3755 (NTAB) / 23312
CERTIFICATION EXP: 3/31/2023





National TAB

Testing, Adjusting, and Balancing Equipment



Function		Range	Minimum Accuracy	Instrument Information	Calibration Date	Date Due
AIR	AIR PRESSURE	0 in wg to 10 in wg	2% +/- 0.001 in wg	Alnor EBT731 - S/N EBT731544009	10/8/2020	10/8/2021
	AIR VELOCITY INSTRUMENT	50 fpm to 3900 fpm	+/- 5 % +/- 7 fpm	Alnor EBT731 - S/N EBT731544010	10/8/2020	10/8/2021
	DIRECT HOOD READING	100 cfm to 2000 cfm	+/- 5 % +/- 7 cfm	DWYER SAH- S/N 0404WP	8/12/2020	8/12/2021
TEMPERATURE	AIR METER	-20 F to 240 F	+/- .5 % 2 F	Cooper ATKINS - SRH77A S/N 081820093	10/9/2020	10/9/2021
	AIR PROBE	-20 F to 240 F	+/- .5 % 2 F	Cooper ATKINS - PD1388 7-6 S/N 5028	10/9/2020	10/9/2021
	IMMERSION METER	-20 F to 240 F	+/- .5 % 2 F	Cooper ATKINS - SRH77A S/N 081820093	10/9/2020	10/9/2021
	IMMERSION PROBE	-20 F to 240 F	+/- .5 % 2 F	Cooper ATKINS - PD1388 7-6 S/N 1075	10/9/2020	10/9/2021
	CONTACT METER	-20 F to 240 F	+/- .5 % 2 F	Cooper ATKINS - SRH77A S/N 081820093	10/9/2020	10/9/2021
	CONTACT PROBE	-20 F to 240 F	+/- .5 % 2 F	Cooper ATKINS - PD1388 7-6 S/N 4011	10/9/2020	10/9/2021
HUMIDITY	HUMIDITY PROBE	10 % RH to 90 % RH	3% of reading	Cooper ATKINS - SRH77A S/N 090315046	10/9/2020	10/9/2021
ELECTRICAL	VOLTAGE MEASUREMENT	0 VAC to 600 VAC	2 % reading +/- 5 digits	Dwyer CM-1 - S/N 190800099	10/21/2020	10/21/2021
	AMPERAGE MEASUREMENT	0 Amperers to 100 Amperes	2 % reading +/- 5 digits	Dwyer CM-1 - S/N 190800099	10/21/2020	10/21/2021
ROTATION	ROTATION MEASUREMENT	60 rpm to 5000 rpm	2 % reading 2 rpm	Dwyer TAC-L - S/N S1100123	10/21/2020	10/21/2021
HYDRONIC	PRESSURE MEASUREMENT	-30 in Hg to 200 psi	±2% of reading +/- 1 psi	Dwyer 490W-6 - S/N 01L67H	10/22/2020	10/22/2021
	DIFFERENTIAL PRESSURE MEASUREMENT	0 psi - 80 psi	±2% of reading +/- 1 psi	Dwyer 490W-6 - S/N 01L67H	10/22/2020	10/22/2021

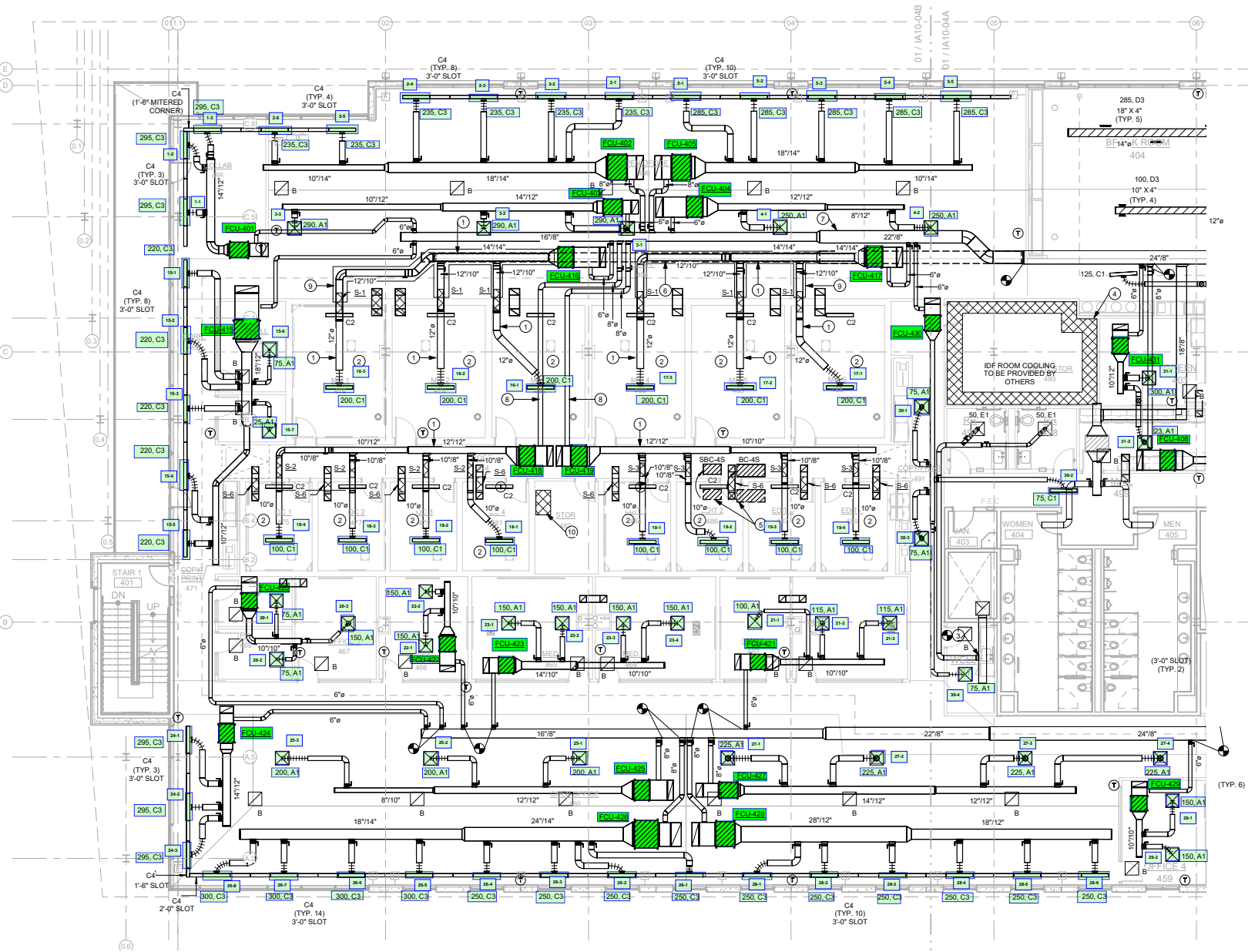
ABBREVIATIONS

AK	Area Factor	NL	Not Listed
B.H.P.	Brake Horse Power	NO.	Number
CFM	Cubic Feet Per Minute	NPSH	Net Positive Suction Head
CO ₂	Carbon Dioxide	NOX	Mono – Nitrogen Oxides
CO	Carbon Monoxide	NS	Not Specified
CH ₂ O	Formaldehyde	OA	Outside Air
CD	Ceiling Diffuser	OAT	Outdoor Air Temperature
CLG	Cooling	P.F.	Power Factor
CF	Correction Factor	P.D.	Pressure Drop
DB	Dry Bulb	PPM	Parts Per Million
Dir	Direction	PSI	Pounds Per Square Inch
EA	Exhaust Air	PSID	PSI Differential
Eff.	Efficiency	RA	Return Air
EF	Exhaust Fan	RH	Relative Humidity
EAT	Entering Air Temperature	RF	Return Fan
EG	Exhaust Grille	RPM	Rotations Per Minute
E.S.P.	External Static Pressure	RAT	Return Air Temperature
EWT	Entering Water Temperature	RG	Return Grille
FPM	Feet Per Minute	SA	Supply Air
F.L.	Full Load	S.F.	Service Factor
FPVAV	Fan Powered Variable Air Volume	SF	Supply Fan
FT	Feet	S.P.	Static Pressure
F	Fahrenheit	SR	Supply Register
GPM	Gallons Per Minute	SQ.	Square
H.P.	Horse Power	TEMP	Temperature
HTG	Heating	T.S.P.	Total Static Pressure
IN	Inches	VEL	Velocity
LAT	Leaving Air Temperature	VFD	Variable Frequency Drive
LWT	Leaving Water Temperature	VAV	Variable Air Volume
MIN	Minimum	VVR	Variable Volume Reheat
MAX	Maximum	WB	Wet Bulb
NEBB	National Environmental Balancing Bureau	WC	Water Column
N/A	Not Applicable	%	Percentage
NA	No Access	#	Number



Project Summary

There are several VRF's that have airflow deficiencies caused by restricted duct runs due to change of ceiling plan after equipment was installed and preliminary site walkthroughs had been completed. The modifications left the duct takeoffs up to 2" closer to diffusers than originally planned causing restrictions in duct runs due to the proximity of diffusers and the thickness of the insulation making sharper bends sometimes creating a zig zag path to allow duct to be attached to diffuser. There were also additional changes to some of the main trunk lines that needed to be rerouted for structural interference. The takeoffs for some of the diffusers near these areas were lacking in sufficient airflow due to turbulence created by the rerouting. Several design totals didn't match VRF tonnage/design requirements and would not allow for desired CFM to be obtained. All Units have been proportionally balanced to total CFM achieved in either the highest or lowest speeds if affected by any adverse conditions. Some design airflows from submittals were not corresponding with the design airflows shown on the mechanical plans, in the case of a discrepancy the diffuser totals shown on mechanical layout was the baseline used for balancing. Notes for affected assets are detailed in the individual note section for that particular piece of equipment.



System/Unit: Fan Coil



Asset: FC401

AREA: 495

Unit Data		
	Design	Actual
MFG	NA	MITSUBISHI
Model Num	NA	TPEFYP024
Serial Num	-	OYR0278130P80 H
Configuration	HORIZONTAL	HORIZONTAL

Test Data		
	Design	Actual
SFAN CFM	875	759
Motor Speed SetPt	-	HIGH
RL Voltage	-	214
RL Amperage	-	0.91
RA CFM	825	708
OA CFM	50	51

Motor Data		
	Design	Actual
Horsepower	-	
Phase	1	1
Voltage (rated)	208	208
Amperage (rated)	-	2.74

Performance Data		
	Design	Actual
Suction ESP	-	0.06
Discharge ESP	-	0.32
Total ESP	0.6	0.38

Completed By: Brian Irvin on 04/15/2021

Notes: 2 ton VRF is only designed for 800CFM. Main duct trunk has sharp 90 degree elbow very close to unit and turbulent air is giving fluctuating readings and does not have the ability to reach above recorded CFM. Diffuser 401-3 is coming directly off of the end cap and creates difficulty redirecting airflow. Flex duct runs for diffusers 1 and 2 are very close to main trunk with some twisting and restriction .

Diffuser Supply (GRD)

FC401 / 495

Asset	Area Served	Type	Size	DESIGN CFM	AK	CFM(1)	CFM(2)	FINAL CFM	% to design
SGRD1	495	C3	10	295		225	225	251	85.1
SGRD2	495	C3	10	295		158	158	250	84.7
SGRD3	495	C3	10	295		306	306	258	87.5

Completed By: Brian Irvin on 05/10/2021

Asset	Area Served	Notes

System/Unit: Fan Coil



Asset: FC402

AREA: 496

Unit Data		
	Design	Actual
MFG	NA	MITSUBISHI
Model Num	NA	TPEFYP048
Serial Num	-	OYR0185230P80 M
Configuration	HORIZONTAL	HORIZONTAL

Test Data		
	Design	Actual
SFAN CFM	1425	1239
Motor Speed SetPt	-	HIGH
RL Voltage	-	213
RL Amperage	-	1.59
RA CFM	1325	1136
OA CFM	100	103

Motor Data		
	Design	Actual
Horsepower	-	
Phase	1	1
Voltage (rated)	208	208
Amperage (rated)	-	3.51

Performance Data		
	Design	Actual
Suction ESP	-	0.09
Discharge ESP	-	0.36
Total ESP	0.6	0.45

Completed By: Brian Irvin on 04/15/2021

Notes: Diffuser 405-1 takeoff is in turbulent area and all other diffusers had to be lowered to make unit proportionally balanced. Duct runs too close to the 45 degree elbow's and would not raise to design without taking other diffusers substantially out of design. 2 45 degree elbows were installed due to structural constraints deviating from GRD.

Diffuser Supply (GRD)

FC402 / 496

Asset	Area Served	Type	Size	DESIGN CFM	AK	CFM(1)	CFM(2)	FINAL CFM	% to design
SGRD1	496	C3	10	235		160		206	87.7
SGRD2	496	C3	10	235		168		214	91.1
SGRD3	496	C3	10	235		183		210	89.4
SGRD4	496	C3	10	235		165		210	89.4
SGRD5	496	C3	10	235		173		201	85.5
SGRD6	496	C3	10	235		188		198	84.3

Completed By: Brian Irvin on 04/15/2021

Asset	Area Served	Notes

System/Unit: Fan Coil



Asset: FC403

AREA: 496

Unit Data		
	Design	Actual
MFG	NA	MITSUBISHI
Model Num	NA	TPEFYP024
Serial Num	-	OYR0278230P80 H
Configuration	HORIZONTAL	HORIZONTAL

Motor Data		
	Design	Actual
Horsepower	-	
Phase	1	1
Voltage (rated)	208	208
Amperage (rated)	-	2.74

Test Data		
	Design	Actual
SFAN CFM	875	885
Motor Speed SetPt	-	HIGH
RL Voltage	-	212
RL Amperage	-	0.82
RA CFM	710	720
OA CFM	165	165

Performance Data		
	Design	Actual
Suction ESP	-	0.08
Discharge ESP	-	0.25
Total ESP	0.6	0.33

Completed By: Brian Irvin on 04/15/2021

Notes:

Diffuser Supply (GRD)

FC403 / 496

Asset	Area Served	Type	Size	DESIGN CFM	AK	CFM(1)	CFM(2)	FINAL CFM	% to design
SGRD1	496	A1	10	290		198		310	106.9
SGRD2	496	A1	10	290		215		294	101.4
SGRD3	496	A1	10	290		300		281	96.9

Completed By: Brian Irvin on 04/07/2021

Asset	Area Served	Notes

System/Unit: Fan Coil



Asset: FC404

AREA: 496

Unit Data		
	Design	Actual
MFG	NA	MITSUBISHI
Model Num	NA	TPEFYP015
Serial Num	-	0XR0152430P80 F
Configuration	HORIZONTAL	HORIZONTAL

Test Data		
	Design	Actual
SFAN CFM	500	517
Motor Speed SetPt	-	MEDIUM HIGH
RL Voltage	-	211
RL Amperage	-	0.37
RA CFM	400	417
OA CFM	100	100

Motor Data		
	Design	Actual
Horsepower	-	
Phase	1	1
Voltage (rated)	208	208
Amperage (rated)	-	1.20

Performance Data		
	Design	Actual
Suction ESP	-	0.09
Discharge ESP	-	0.26
Total ESP	0.6	0.35

Completed By: Brian Irvin on 04/15/2021

Notes:

Diffuser Supply (GRD)

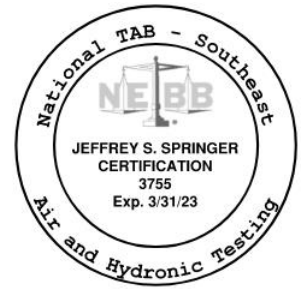
FC404 / 496

Asset	Area Served	Type	Size	DESIGN CFM	AK	CFM(1)	CFM(2)	FINAL CFM	% to design
SGRD1	496	A1	8	250		88	205	263	105.2
SGRD2	496	A1	8	250		239	199	254	101.6

Completed By: Brian Irvin on 04/15/2021

Asset	Area Served	Notes
-------	-------------	-------

System/Unit: Fan Coil



Asset: FC405

AREA: 496

Unit Data		
	Design	Actual
MFG	NA	MITSUBISHI
Model Num	NA	TPEFYP048
Serial Num	-	OYR0185830P80 M
Configuration	HORIZONTAL	HORIZONTAL

Test Data		
	Design	Actual
SFAN CFM	1425	1324
Motor Speed SetPt	-	HIGH
RL Voltage	-	213
RL Amperage	-	1.63
RA CFM	1310	1210
OA CFM	115	114

Motor Data		
	Design	Actual
Horsepower		
Phase	1	1
Voltage (rated)	208	208
Amperage (rated)	-	3.51

Performance Data		
	Design	Actual
Suction ESP	-	0.12
Discharge ESP	-	0.28
Total ESP	0.6	0.40

Completed By: Brian Irvin on 04/15/2021

Notes:

Diffuser Supply (GRD)

FC405 / 496

Asset	Area Served	Type	Size	DESIGN CFM	AK	CFM(1)	CFM(2)	FINAL CFM	% to design
SGRD1	496	CD3	10	285		195		259	90.9
SGRD2	496	CD3	10	285		191		265	93.0
SGRD3	496	CD3	10	285		183		271	95.1
SGRD4	496	CD3	10	285		194		265	93.0
SGRD5	496	CD3	10	285		210		264	92.6

Completed By: Brian Irvin on 04/07/2021

Asset	Area Served	Notes

System/Unit: Fan Coil



Asset: FC406

AREA: 404

Unit Data		
	Design	Actual
MFG	NA	MITSUBISHI
Model Num	NA	TPEFYP048
Serial Num	-	OYR0185130P80 M
Configuration	HORIZONTAL	HORIZONTAL

Test Data		
	Design	Actual
SFAN CFM	1425	1415
Motor Speed SetPt	-	HIGH
RL Voltage	-	212
RL Amperage	-	1.08
RA CFM	1250	1236
OA CFM	175	179

Motor Data		
	Design	Actual
Horsepower	-	
Phase	1	1
Voltage (rated)	208	208
Amperage (rated)	-	3.51

Performance Data		
	Design	Actual
Suction ESP	-	0.16
Discharge ESP	-	0.27
Total ESP	0.6	0.43

Completed By: Brian Irvin on 04/15/2021

Notes:

Diffuser Supply (GRD)

FC406 / 404

Asset	Area Served	Type	Size	DESIGN CFM	AK	CFM(1)	CFM(2)	FINAL CFM	% to design
SGRD1	404	D3	18X4	285		269	280	274	96.1
SGRD2	404	D3	18X4	285		128	355	290	101.8
SGRD3	404	D3	18X4	285		264	423	294	103.2
SGRD4	404	D3	18X4	285		186	138	269	94.4
SGRD5	404	D3	18X4	285		298	226	288	101.1

Completed By: Brian Irvin on 04/15/2021

Asset	Area Served	Notes

System/Unit: Fan Coil



Asset: FC407

AREA: 404

Unit Data		
	Design	Actual
MFG	NA	MITSUBISHI
Model Num	NA	TPEFYP015
Serial Num	-	0XR0152730P80 F
Configuration	HORIZONTAL	HORIZONTAL

Test Data		
	Design	Actual
SFAN CFM	400	584
Motor Speed SetPt	-	LOW
RL Voltage	-	212
RL Amperage	-	0.21
RA CFM	275	464
OA CFM	125	120

Motor Data		
	Design	Actual
Horsepower	-	
Phase	1	1
Voltage (rated)	208	208
Amperage (rated)	-	1.20

Performance Data		
	Design	Actual
Suction ESP	-	0.07
Discharge ESP	-	0.26
Total ESP	0.6	0.33

Completed By: Brian Irvin on 04/15/2021

Notes: Lowest set point would not decrease to design. Unit balanced proportionally

Diffuser Supply (GRD)

FC407 / 404

Asset	Area Served	Type	Size	DESIGN CFM	AK	CFM(1)	CFM(2)	FINAL CFM	% to design
SGRD1	404	D3	10X4	100		180		149	149.0
SGRD2	404	D3	10X4	100		170		144	144.0
SGRD3	404	D3	10X4	100		205		149	149.0
SGRD4	404	D3	10X4	100		160		142	142.0

Completed By: Brian Irvin on 04/15/2021

Asset	Area Served	Notes

System/Unit: Fan Coil



Asset: FC408

AREA: 401

Unit Data		
	Design	Actual
MFG	NA	MITSUBISHI
Model Num	NA	TPEFYP018
Serial Num	-	OYR0266730P80 G
Configuration	HORIZONTAL	HORIZONTAL

Test Data		
	Design	Actual
SFAN CFM	500	532
Motor Speed SetPt	-	HIGH
RL Voltage	-	212
RL Amperage	-	0.62
RA CFM	335	377
OA CFM	165	155

Motor Data		
	Design	Actual
Horsepower	-	
Phase	1	1
Voltage (rated)	208	208
Amperage (rated)	-	1.20

Performance Data		
	Design	Actual
Suction ESP	-	0.09
Discharge ESP	-	0.24
Total ESP	0.6	0.33

Completed By: Brian Irvin on 04/15/2021

Notes:

Diffuser Supply (GRD)

FC408 / 401

Asset	Area Served	Type	Size	DESIGN CFM	AK	CFM(1)	CFM(2)	FINAL CFM	% to design
SGRD1	401	C1	8	125		78		137	109.6
SGRD2	401	C1	8	125		78		131	104.8
SGRD3	401	C1	8	125		84		128	102.4
SGRD4	401	C1	8	125		78		136	108.8

Completed By: Brian Irvin on 04/15/2021

Asset	Area Served	Notes

System/Unit: Fan Coil



Asset: FC409

AREA: 411

Unit Data		
	Design	Actual
MFG	NA	MITSUBISHI
Model Num	NA	TPEFYP036
Serial Num	-	08R0175830P80 L
Configuration	HORIZONTAL	HORIZONTAL

Test Data		
	Design	Actual
SFAN CFM	1165	1052
Motor Speed SetPt	-	HIGH
RL Voltage	-	212
RL Amperage	-	1.47
RA CFM	1040	929
OA CFM	125	123

Motor Data		
	Design	Actual
Horsepower	-	
Phase	1	1
Voltage (rated)	208	208
Amperage (rated)	-	3.50

Performance Data		
	Design	Actual
Suction ESP	-	0.08
Discharge ESP	-	0.26
Total ESP	0.6	0.34

Completed By: Brian Irvin on 04/15/2021

Notes:

Diffuser Supply (GRD)

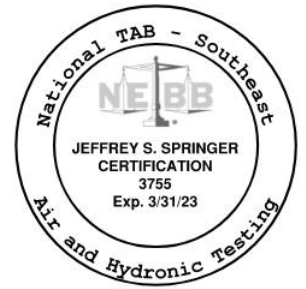
FC409 / 411

Asset	Area Served	Type	Size	DESIGN CFM	AK	CFM(1)	CFM(2)	FINAL CFM	% to design
SGRD1	411	C3	8	200		112	158	173	86.5
SGRD2	411	C3	8	200		119	164	180	90.0
SGRD3	411	C3	8	200		128	166	174	87.0
SGRD4	411	C3	8	200		129	173	181	90.5
SGRD5	411	C3	8	200		138	185	166	83.0
SGRD6	411	C3	8	200		108	155	178	89.0

Completed By: Brian Irvin on 04/15/2021

Asset	Area Served	Notes

System/Unit: Fan Coil



Asset: FC410

AREA: 411

Unit Data		
	Design	Actual
MFG	NA	MITSUBISHI
Model Num	NA	TPEFYP015
Serial Num	-	0XR0150630P80 F
Configuration	HORIZONTAL	HORIZONTAL

Test Data		
	Design	Actual
SFAN CFM	500	505
Motor Speed SetPt	-	MEDIUM HIGH
RL Voltage	-	214
RL Amperage	-	0.41
RA CFM	390	395
OA CFM	100	110

Motor Data		
	Design	Actual
Horsepower	-	
Phase	1	1
Voltage (rated)	208	208
Amperage (rated)	-	1.20

Performance Data		
	Design	Actual
Suction ESP	-	0.16
Discharge ESP	-	0.21
Total ESP	0.6	0.37

Completed By: Brian Irvin on 04/15/2021

Notes:

Diffuser Supply (GRD)

FC410 / 411

Asset	Area Served	Type	Size	DESIGN CFM	AK	CFM(1)	CFM(2)	FINAL CFM	% to design
SGRD1	411	A1	8	170		142	190	165	97.1
SGRD2	411	A1	8	170		119	172	168	98.8
SGRD3	411	A1	8	170		143	188	172	101.2

Completed By: Brian Irvin on 04/15/2021

Asset	Area Served	Notes

System/Unit: Fan Coil



Asset: FC411

AREA: 412

Unit Data		
	Design	Actual
MFG	NA	MITSUBISHI
Model Num	NA	TPEFYP006
Serial Num	-	09R0111630P80 C
Configuration	HORIZONTAL	HORIZONTAL

Motor Data		
	Design	Actual
Horsepower	-	
Phase	1	1
Voltage (rated)	208	208
Amperage (rated)	-	1.05

Test Data		
	Design	Actual
SFAN CFM	300	323
Motor Speed SetPt	-	MEDIUM LOW
RL Voltage	-	212
RL Amperage	-	0.18
RA CFM	285	307
OA CFM	15	16

Performance Data		
	Design	Actual
Suction ESP	-	0.18
Discharge ESP	-	0.20
Total ESP	0.6	0.38

Completed By: Brian Irvin on 04/15/2021

Notes:

Diffuser Supply (GRD)

FC411 / 412

Asset	Area Served	Type	Size	DESIGN CFM	AK	CFM(1)	CFM(2)	FINAL CFM	% to design
SGRD1	412	A1	10	300		349		323	107.7

Completed By: Brian Irvin on 04/06/2021

Asset	Area Served	Notes

System/Unit: Fan Coil



Asset: FC412

AREA: 418

Unit Data		
	Design	Actual
MFG	NA	MITSUBISHI
Model Num	NA	TPEFYP036
Serial Num	-	O8R0173530P80 L
Configuration	HORIZONTAL	HORIZONTAL

Test Data		
	Design	Actual
SFAN CFM	1165	1192
Motor Speed SetPt	-	HIGH
RL Voltage	-	213
RL Amperage	-	0.51
RA CFM	1040	1070
OA CFM	125	122

Motor Data		
	Design	Actual
Horsepower	-	
Phase	1	1
Voltage (rated)	208	208
Amperage (rated)	-	3.51

Performance Data		
	Design	Actual
Suction ESP	-	0.18
Discharge ESP	-	0.23
Total ESP	0.6	0.41

Completed By: Brian Irvin on 04/15/2021

Notes:

Diffuser Supply (GRD)

FC412 / 418

Asset	Area Served	Type	Size	DESIGN CFM	AK	CFM(1)	CFM(2)	FINAL CFM	% to design
SGRD1	418	C3	8	200		133		196	98.0
SGRD2	418	C3	8	200		134		190	95.0
SGRD3	418	C3	8	200		144		205	102.5
SGRD4	418	C3	8	200		143		209	104.5
SGRD5	418	C3	8	200		113		193	96.5
SGRD6	418	C3	8	200		133		199	99.5

Completed By: Brian Irvin on 04/15/2021

Asset	Area Served	Notes

System/Unit: Fan Coil



Asset: FC413

AREA: 417

Unit Data		
	Design	Actual
MFG	NA	MITSUBISHI
Model Num	NA	TPEFYP018
Serial Num	-	OYR0275030P8 0G
Configuration	HORIZONTAL	HORIZONTAL

Motor Data		
	Design	Actual
Horsepower	-	
Phase	1	1
Voltage (rated)	208	208
Amperage (rated)	-	1.20

Test Data		
	Design	Actual
SFAN CFM	660	671
Motor Speed SetPt	-	MEDIUM HIGH
RL Voltage	-	214
RL Amperage	-	0.54
RA CFM	555	567
OA CFM	105	104

Performance Data		
	Design	Actual
Suction ESP	-	0.17
Discharge ESP	-	0.29
Total ESP	0.6	0.46

Completed By: Brian Irvin on 04/15/2021

Notes:

Diffuser Supply (GRD)

FC413 / 417

Asset	Area Served	Type	Size	DESIGN CFM	AK	CFM(1)	CFM(2)	FINAL CFM	% to design
SGRD1	417	A1	8	170		163		186	109.4
SGRD2	415	A1	8	170		136		160	94.1
SGRD3	414	A1	8	170		131		178	104.7
SGRD4	413	A1	8	150		144		147	98.0

Completed By: Brian Irvin on 04/15/2021

Asset	Area Served	Notes

System/Unit: Fan Coil



Asset: FC414

AREA: 421

Unit Data		
	Design	Actual
MFG	NA	MITSUBISHI
Model Num	NA	TPEFYP024
Serial Num	-	OYR0277730P80 H
Configuration	HORIZONTAL	HORIZONTAL

Motor Data		
	Design	Actual
Horsepower	-	
Phase	1	1
Voltage (rated)	208	208
Amperage (rated)	-	2.74

Test Data		
	Design	Actual
SFAN CFM	885	862
Motor Speed SetPt	-	MEDIUM
RL Voltage	-	213
RL Amperage	-	0.54
RA CFM	810	787
OA CFM	75	75

Performance Data		
	Design	Actual
Suction ESP	-	0.19
Discharge ESP	-	0.28
Total ESP	0.6	0.47

Completed By: Brian Irvin on 04/15/2021

Notes:

Diffuser Supply (GRD)

FC414 / 421

Asset	Area Served	Type	Size	DESIGN CFM	AK	CFM(1)	CFM(2)	FINAL CFM	% to design
SGRD1	421	A1	12	440		427		412	93.6
SGRD2	421	A1	12	440		400		450	102.3

Completed By: Brian Irvin on 04/15/2021

Asset	Area Served	Notes

System/Unit: Fan Coil



Asset: FC415

AREA: 468

Unit Data		
	Design	Actual
MFG	NA	MITSUBISHI
Model Num	NA	TPEFYP036
Serial Num	-	08R0176130P80 L
Configuration	HORIZONTAL	HORIZONTAL

Test Data		
	Design	Actual
SFAN CFM	1200	1137
Motor Speed SetPt	-	HIGH
RL Voltage	-	213
RL Amperage	-	1.70
RA CFM	1105	1041
OA CFM	95	96

Motor Data		
	Design	Actual
Horsepower	-	
Phase	1	1
Voltage (rated)	208	208
Amperage (rated)	-	3.50

Performance Data		
	Design	Actual
Suction ESP	-	0.15
Discharge ESP	-	0.27
Total ESP	0.6	0.42

Completed By: Brian Irvin on 04/15/2021

Notes:

Diffuser Supply (GRD)

FC415 / 468

Asset	Area Served	Type	Size	DESIGN CFM	AK	CFM(1)	CFM(2)	FINAL CFM	% to design
SGRD1	468	C3	10	220		48		220	100.0
SGRD2	468	C3	10	220		128		200	90.9
SGRD3	468	C3	10	220		128		212	96.4
SGRD4	468	C3	10	220		81		201	91.4
SGRD5	468	C3	10	220		132		200	90.9
SGRD6	473	A1	8	75		163		78	104.0
SGRD7	474	A1	8	25		201		26	104.0

Completed By: Brian Irvin on 04/15/2021

Asset	Area Served	Notes

System/Unit: Fan Coil



Asset: FC416

AREA: 478

Unit Data		
	Design	Actual
MFG	NA	MITSUBISHI
Model Num	NA	TPEFYP018
Serial Num	-	OYR0274830P80 G
Configuration	HORIZONTAL	HORIZONTAL

Test Data		
	Design	Actual
SFAN CFM	600	611
Motor Speed SetPt	-	HIGH
RL Voltage	-	213
RL Amperage	-	0.69
RA CFM	515	525
OA CFM	85	86

Motor Data		
	Design	Actual
Horsepower	-	
Phase	1	1
Voltage (rated)	208	208
Amperage (rated)	-	1.20

Performance Data		
	Design	Actual
Suction ESP	-	0.17
Discharge ESP	-	0.26
Total ESP	0.6	0.43

Completed By: Brian Irvin on 04/15/2021

Notes:

Diffuser Supply (GRD)

FC416 / 478

Asset	Area Served	Type	Size	DESIGN CFM	AK	CFM(1)	CFM(2)	FINAL CFM	% to design
SGRD1	480	C1	8	200		263	263	212	106.0
SGRD2	478	C1	8	200		303	303	181	90.5
SGRD3	476	C1	8	200		95	95	218	109.0

Completed By: Brian Irvin on 04/08/2021

Asset	Area Served	Notes

System/Unit: Fan Coil



Asset: FC417

AREA: 485

Unit Data		
	Design	Actual
MFG	NA	MITSUBISHI
Model Num	NA	TPEFYP018
Serial Num	-	OYR0274930P80 G
Configuration	HORIZONTAL	HORIZONTAL

Test Data		
	Design	Actual
SFAN CFM	600	607
Motor Speed SetPt	-	HIGH
RL Voltage	-	214
RL Amperage	-	0.69
RA CFM	515	522
OA CFM	85	85

Motor Data		
	Design	Actual
Horsepower	-	
Phase	1	1
Voltage (rated)	208	208
Amperage (rated)	-	1.20

Performance Data		
	Design	Actual
Suction ESP	-	0.14
Discharge ESP	-	0.28
Total ESP	0.6	0.42

Completed By: Brian Irvin on 04/15/2021

Notes:

Diffuser Supply (GRD)

FC417 / 485

Asset	Area Served	Type	Size	DESIGN CFM	AK	CFM(1)	CFM(2)	FINAL CFM	% to design
SGRD1	488	C1	8	200		237		215	107.5
SGRD2	485	C1	8	200		165		180	90.0
SGRD3	483	C1	8	200		275		212	106.0

Completed By: Brian Irvin on 04/15/2021

Asset	Area Served	Notes

System/Unit: Fan Coil



Asset: FC418

AREA: 481

Unit Data		
	Design	Actual
MFG	NA	MITSUBISHI
Model Num	NA	TPEFYP015
Serial Num	-	0XR0152230P80 F
Configuration	HORIZONTAL	HORIZONTAL

Motor Data		
	Design	Actual
Horsepower	-	
Phase	1	1
Voltage (rated)	208	208
Amperage (rated)	-	1.20

Test Data		
	Design	Actual
SFAN CFM	400	431
Motor Speed SetPt	-	HIGH
RL Voltage	-	212
RL Amperage	-	0.57
RA CFM	385	317
OA CFM	115	114

Performance Data		
	Design	Actual
Suction ESP	-	0.11
Discharge ESP	-	0.24
Total ESP	0.6	0.35

Completed By: Brian Irvin on 04/15/2021

Notes:

Diffuser Supply (GRD)

FC418 / 481

Asset	Area Served	Type	Size	DESIGN CFM	AK	CFM(1)	CFM(2)	FINAL CFM	% to design
SGRD1	481	EC1	8	100		111		105	105.0
SGRD2	479	C1	8	100		185		110	110.0
SGRD3	477	C1	8	100		144		107	107.0
SGRD4	475	C1	8	100		160		109	109.0

Completed By: Brian Irvin on 04/15/2021

Asset	Area Served	Notes

System/Unit: Fan Coil



Asset: FC419

AREA: 484

Unit Data		
	Design	Actual
MFG	NA	MITSUBISHI
Model Num	NA	TPEFYP015
Serial Num	-	12R0171530P80 F
Configuration	HORIZONTAL	HORIZONTAL

Motor Data		
	Design	Actual
Horsepower	-	
Phase	1	1
Voltage (rated)	208	208
Amperage (rated)	-	1.20

Test Data		
	Design	Actual
SFAN CFM	400	431
Motor Speed SetPt	-	HIGH
RL Voltage	-	213
RL Amperage	-	0.57
RA CFM	385	315
OA CFM	115	116

Performance Data		
	Design	Actual
Suction ESP	-	0.11
Discharge ESP	-	0.25
Total ESP	0.6	0.36

Completed By: Brian Irvin on 04/15/2021

Notes:

Diffuser Supply (GRD)

FC419 / 484

Asset	Area Served	Type	Size	DESIGN CFM	AK	CFM(1)	CFM(2)	FINAL CFM	% to design
SGRD1	484	C1	8	100		48		106	106.0
SGRD2	486	C1	8	100		129		109	109.0
SGRD3	488	C1	8	100		132		106	106.0
SGRD4	490	C1	8	100		212		110	110.0

Completed By: Brian Irvin on 04/15/2021

Asset	Area Served	Notes

System/Unit: Fan Coil



Asset: FC420

AREA: 467

Unit Data		
	Design	Actual
MFG	NA	MITSUBISHI
Model Num	NA	TPEFYP006
Serial Num	-	09R0111530P80 C
Configuration	HORIZONTAL	HORIZONTAL

Test Data		
	Design	Actual
SFAN CFM	300	270
Motor Speed SetPt	-	LOW
RL Voltage	-	214
RL Amperage	-	0.20
RA CFM	285	255
OA CFM	15	15

Motor Data		
	Design	Actual
Horsepower	-	
Phase	1	1
Voltage (rated)	208	208
Amperage (rated)	-	1.05

Performance Data		
	Design	Actual
Suction ESP	-	0.09
Discharge ESP	-	0.24
Total ESP	0.6	0.34

Completed By: Brian Irvin on 04/15/2021

Notes:

Diffuser Supply (GRD)

FC420 / 467

Asset	Area Served	Type	Size	DESIGN CFM	AK	CFM(1)	CFM(2)	FINAL CFM	% to design
SGRD1	470	A1	8	75		107		80	106.7
SGRD2	469	A1	8	75		134		80	106.7
SGRD3	467	A1	8	150		149		110	73.3

Completed By: Brian Irvin on 04/15/2021

Asset	Area Served	Notes

System/Unit: Fan Coil



Asset: FC421

AREA: 463

Unit Data		
	Design	Actual
MFG	NA	MITSUBISHI
Model Num	NA	TPEFYP008
Serial Num	-	11RP264730P80 D
Configuration	HORIZONTAL	HORIZONTAL

Motor Data		
	Design	Actual
Horsepower	-	
Phase	1	1
Voltage (rated)	208	208
Amperage (rated)	-	1.05

Test Data		
	Design	Actual
SFAN CFM	300	356
Motor Speed SetPt	-	LOW
RL Voltage	-	213
RL Amperage	-	0.19
RA CFM	250	301
OA CFM	50	55

Performance Data		
	Design	Actual
Suction ESP	-	0.21
Discharge ESP	-	0.23
Total ESP	0.6	0.44

Completed By: Brian Irvin on 04/15/2021

Notes:

Diffuser Supply (GRD)

FC421 / 463

Asset	Area Served	Type	Size	DESIGN CFM	AK	CFM(1)	CFM(2)	FINAL CFM	% to design
SGRD1	463	A1	8	100		119		104	104.0
SGRD2	462	A1	8	115		130		126	109.6
SGRD3	462	A1	8	115		115		126	109.6

Completed By: Brian Irvin on 04/15/2021

Asset	Area Served	Notes

System/Unit: Fan Coil



Asset: FC422

AREA: 466

Unit Data		
	Design	Actual
MFG	NA	MITSUBISHI
Model Num	NA	TPEFYP006
Serial Num	-	09R0112730P80 G
Configuration	HORIZONTAL	HORIZONTAL

Test Data		
	Design	Actual
SFAN CFM	300	321
Motor Speed SetPt	-	LOW
RL Voltage	-	214
RL Amperage	-	0.17
RA CFM	250	267
OA CFM	50	54

Motor Data		
	Design	Actual
Horsepower	-	
Phase	1	1
Voltage (rated)	208	208
Amperage (rated)	-	1.05

Performance Data		
	Design	Actual
Suction ESP	-	0.14
Discharge ESP	-	0.29
Total ESP	0.6	0.43

Completed By: Brian Irvin on 04/15/2021

Notes:

Diffuser Supply (GRD)

FC422 / 466

Asset	Area Served	Type	Size	DESIGN CFM	AK	CFM(1)	CFM(2)	FINAL CFM	% to design
SGRD1	466	A1	8	150		156		158	105.3
SGRD2	466	A1	8	150		198		163	108.7

Completed By: Brian Irvin on 04/15/2021

Asset	Area Served	Notes

System/Unit: Fan Coil



Asset: FC423

AREA: 464

Unit Data		
	Design	Actual
MFG	NA	MITSUBISHI
Model Num	NA	TPEFYP018
Serial Num	-	OYR0270030P80 G
Configuration	HORIZONTAL	HORIZONTAL

Motor Data		
	Design	Actual
Horsepower	-	
Phase	1	1
Voltage (rated)	208	208
Amperage (rated)	-	1.20

Test Data		
	Design	Actual
SFAN CFM	600	624
Motor Speed SetPt	-	MEDIUM
RL Voltage	-	214
RL Amperage	-	0.12
RA CFM	550	571
OA CFM	50	53

Performance Data		
	Design	Actual
Suction ESP	-	0.18
Discharge ESP	-	0.35
Total ESP	0.6	0.53

Completed By: Brian Irvin on 04/15/2021

Notes:

Diffuser Supply (GRD)

FC423 / 464

Asset	Area Served	Type	Size	DESIGN CFM	AK	CFM(1)	CFM(2)	FINAL CFM	% to design
SGRD1	465	A1	8	150		112		138	92.0
SGRD2	465	A1	8	150		162		157	104.7
SGRD3	464	A1	8	150		135		164	109.3
SGRD4	464	A1	8	150		144		165	110.0

Completed By: Brian Irvin on 04/15/2021

Asset	Area Served	Notes

System/Unit: Fan Coil



Asset: FC424

AREA: 460

Unit Data		
	Design	Actual
MFG	NA	MITSUBISHI
Model Num	NA	TPEFYP024
Serial Num	-	OYR0277130P80 H
Configuration	HORIZONTAL	HORIZONTAL

Motor Data		
	Design	Actual
Horsepower	-	
Phase	1	1
Voltage (rated)	208	208
Amperage (rated)	-	2.74

Test Data		
	Design	Actual
SFAN CFM	885	728
Motor Speed SetPt	-	HIGH
RL Voltage	-	213
RL Amperage	-	0.88
RA CFM	835	676
OA CFM	50	52

Performance Data		
	Design	Actual
Suction ESP	-	0.17
Discharge ESP	-	0.31
Total ESP	0.6	0.48

Completed By: Brian Irvin on 04/15/2021

Notes: 2 ton VRF not designed to reach 885 CFM. Unit balanced proportionally.

Diffuser Supply (GRD)

FC424 / 460

Asset	Area Served	Type	Size	DESIGN CFM	AK	CFM(1)	CFM(2)	FINAL CFM	% to design
SGRD1	460	C3	10	295		217		252	85.4
SGRD2	460	C3	10	295		139		234	79.3
SGRD3	460	C3	10	295		185		242	82.0

Completed By: Brian Irvin on 04/07/2021

Asset	Area Served	Notes

System/Unit: Fan Coil



Asset: FC425

AREA: 460

Unit Data		
	Design	Actual
MFG	NA	MITSUBISHI
Model Num	NA	TPEFYP018
Serial Num	-	OYR0270130P80 G
Configuration	HORIZONTAL	HORIZONTAL

Motor Data		
	Design	Actual
Horsepower	-	
Phase	1	1
Voltage (rated)	208	208
Amperage (rated)	-	1.20

Test Data		
	Design	Actual
SFAN CFM	600	630
Motor Speed SetPt	-	HIGH
RL Voltage	-	214
RL Amperage	-	0.66
RA CFM	475	505
OA CFM	125	125

Performance Data		
	Design	Actual
Suction ESP	-	0.16
Discharge ESP	-	0.36
Total ESP	0.6	0.52

Completed By: Brian Irvin on 04/15/2021

Notes:

Diffuser Supply (GRD)

FC425 / 460

Asset	Area Served	Type	Size	DESIGN CFM	AK	CFM(1)	CFM(2)	FINAL CFM	% to design
SGRD1	460	A1	8	200		149		211	105.5
SGRD2	460	A1	8	200		175		214	107.0
SGRD3	460	A1	8	200		185		205	102.5

Completed By: Brian Irvin on 04/15/2021

Asset	Area Served	Notes

System/Unit: Fan Coil



Asset: FC426

AREA: 460

Unit Data		
	Design	Actual
MFG	NA	MITSUBISHI
Model Num	NA	TPEFYP072
Serial Num	-	9YW003707GEH B4
Configuration	HORIZONTAL	HORIZONTAL

Test Data		
	Design	Actual
SFAN CFM	2200	2177
Motor Speed SetPt	-	HIGH
RL Voltage	-	214
RL Amperage	-	5.3
RA CFM	2425	2052
OA CFM	125	125

Motor Data		
	Design	Actual
Horsepower	-	
Phase	1	1
Voltage (rated)	208	208
Amperage (rated)	-	7.10

Performance Data		
	Design	Actual
Suction ESP	-	0.18
Discharge ESP	-	0.26
Total ESP	0.6	0.44

Completed By: Brian Irvin on 04/15/2021

Notes:

Diffuser Supply (GRD)

FC426 / 460

Asset	Area Served	Type	Size	DESIGN CFM	AK	CFM(1)	CFM(2)	FINAL CFM	% to design
FC426-SGRD8	460	CD3	10	300		119		286	95.3
SGRD1	460	C3	8	250		161		247	98.8
SGRD2	460	C3	8	250		128		251	100.4
SGRD3	460	C3	8	250		112		250	100.0
SGRD4	460	C3	8	250		196		251	100.4
SGRD5	460	C3	10	300		188		301	100.3
SGRD6	460	C3	10	300		106		297	99.0
SGRD7	460	C3	10	300		92		294	98.0

Completed By: Brian Irvin on 04/07/2021

Asset	Area Served	Notes

System/Unit: Fan Coil



Asset: FC427

AREA: 460

Unit Data		
	Design	Actual
MFG	NA	MITSUBISHI
Model Num	NA	TPEFYP024
Serial Num	-	OYR0622230P80 H
Configuration	HORIZONTAL	HORIZONTAL

Test Data		
	Design	Actual
SFAN CFM	885	901
Motor Speed SetPt	-	HIGH
RL Voltage	-	213
RL Amperage	-	0.81
RA CFM	685	898
OA CFM	200	203

Motor Data		
	Design	Actual
Horsepower	-	
Phase	1	1
Voltage (rated)	208	208
Amperage (rated)	-	2.74

Performance Data		
	Design	Actual
Suction ESP	-	0.15
Discharge ESP	-	0.28
Total ESP	0.6	0.43

Completed By: Brian Irvin on 04/15/2021

Notes:

Diffuser Supply (GRD)

FC427 / 460

Asset	Area Served	Type	Size	DESIGN CFM	AK	CFM(1)	CFM(2)	FINAL CFM	% to design
SGRD1	460	A1	8	225		138		220	97.8
SGRD2	460	A1	8	225		230		220	97.8
SGRD3	460	A1	8	225		200		220	97.8
SGRD4	460	A1	8	225		185		241	107.1

Completed By: Brian Irvin on 04/15/2021

Asset	Area Served	Notes

System/Unit: Fan Coil



Asset: FC428

AREA: 460

Unit Data		
	Design	Actual
MFG	NA	MITSUBISHI
Model Num	NA	TPEFYP054
Serial Num	-	OYR0066430P80 N
Configuration	HORIZONTAL	HORIZONTAL

Test Data		
	Design	Actual
SFAN CFM	1485	1054
Motor Speed SetPt	-	HIGH
RL Voltage	-	213
RL Amperage	-	1.58
RA CFM	1360	927
OA CFM	125	127

Motor Data		
	Design	Actual
Horsepower	-	
Phase	1	1
Voltage (rated)	208	208
Amperage (rated)	-	3.51

Performance Data		
	Design	Actual
Suction ESP	-	0.14
Discharge ESP	-	.027
Total ESP	0.6	0.41

Completed By: Brian Irvin on 04/15/2021

Notes: Duct runs are too close to the diffusers and would not raise to design due to restrictive air path. Unit balanced proportionally.

Diffuser Supply (GRD)

FC428 / 460

Asset	Area Served	Type	Size	DESIGN CFM	AK	CFM(1)	CFM(2)	FINAL CFM	% to design
SGRD1	460	C3	8	250		166	160	169	67.6
SGRD2	460	C3	8	250		158	116	179	71.6
SGRD3	460	C3	8	250		143	132	188	75.2
SGRD4	460	C3	8	250		137	148	174	69.6
SGRD5	460	C3	8	250		160	160	168	67.2
SGRD6	460	C3	8	250		139	127	176	70.4

Completed By: Brian Irvin on 04/07/2021

Asset	Area Served	Notes

System/Unit: Fan Coil



Asset: FC429

AREA: 459

Unit Data		
	Design	Actual
MFG	NA	MITSUBISHI
Model Num	NA	TPEFYP008
Serial Num	-	11R0265430P80 D
Configuration	HORIZONTAL	HORIZONTAL

Test Data		
	Design	Actual
SFAN CFM	300	319
Motor Speed SetPt	-	LOW
RL Voltage	-	212
RL Amperage	-	0.19
RA CFM	275	294
OA CFM	25	25

Motor Data		
	Design	Actual
Horsepower	-	
Phase	1	1
Voltage (rated)	208	208
Amperage (rated)	-	1.05

Performance Data		
	Design	Actual
Suction ESP	-	0.11
Discharge ESP	-	0.25
Total ESP	0.6	0.36

Completed By: Brian Irvin on 04/15/2021

Notes:

Diffuser Supply (GRD)

FC429 / 459

Asset	Area Served	Type	Size	DESIGN CFM	AK	CFM(1)	CFM(2)	FINAL CFM	% to design
SGRD1	459	A1	8	150		147		158	105.3
SGRD2	459	A1	8	150		195		161	107.3

Completed By: Brian Irvin on 04/06/2021

Asset	Area Served	Notes
-------	-------------	-------

System/Unit: Fan Coil



Asset: FC430

AREA: 491

Unit Data		
	Design	Actual
MFG	NA	MITSUBISHI
Model Num	NA	TPEFYP006
Serial Num	-	09R0107430P08 C
Configuration	HORIZONTAL	HORIZONTAL

Test Data		
	Design	Actual
SFAN CFM	300	292
Motor Speed SetPt	-	MEDIUM LOW
RL Voltage	-	213
RL Amperage	-	0.19
RA CFM	260	248
OA CFM	40	44

Motor Data		
	Design	Actual
Horsepower	-	
Phase	1	1
Voltage (rated)	208	208
Amperage (rated)	-	1.05

Performance Data		
	Design	Actual
Suction ESP	-	0.13
Discharge ESP	-	0.24
Total ESP	0.6	0.37

Completed By: Brian Irvin on 04/15/2021

Notes:

Diffuser Supply (GRD)

FC430 / 491

Asset	Area Served	Type	Size	DESIGN CFM	AK	CFM(1)	CFM(2)	FINAL CFM	% to design
SGRD1	491	A1	8	75		72		81	108.0
SGRD2	499	C1	8	75		41		68	90.7
SGRD3	491	A1	8	75		123		72	96.0
SGRD4	461	A1	8	75		71		71	94.7

Completed By: Brian Irvin on 04/15/2021

Asset	Area Served	Notes

System/Unit: Fan Coil



Asset: FC431

AREA: 403

Unit Data		
	Design	Actual
MFG	NA	MITSUBISHI
Model Num	NA	TPEFYP015
Serial Num	-	0XR0152830P80 F
Configuration	HORIZONTAL	HORIZONTAL

Test Data		
	Design	Actual
SFAN CFM	500	544
Motor Speed SetPt	-	MEDIUM HIGH
RL Voltage	-	212
RL Amperage	-	0.39
RA CFM	455	502
OA CFM	45	42

Motor Data		
	Design	Actual
Horsepower	-	
Phase	1	1
Voltage (rated)	208	208
Amperage (rated)	-	1.20

Performance Data		
	Design	Actual
Suction ESP	-	0.13
Discharge ESP	-	0.21
Total ESP	0.6	0.44

Completed By: Brian Irvin on 04/15/2021

Notes:

Diffuser Supply (GRD)

FC431 / 403

Asset	Area Served	Type	Size	DESIGN CFM	AK	CFM(1)	CFM(2)	FINAL CFM	% to design
SGRD1	403	A1	10	300		241	220	329	109.7
SGRD2	403	A1	8	200		157	156	215	107.5

Completed By: Brian Irvin on 04/06/2021

Asset	Area Served	Notes

System/Unit: Fan Coil



Asset: FC432

AREA: 408

Unit Data		
	Design	Actual
MFG	NA	MITSUBISHI
Model Num	NA	TPEFYP018
Serial Num	-	OYR0275130P80 G
Configuration	HORIZONTAL	HORIZONTAL

Motor Data		
	Design	Actual
Horsepower	-	
Phase	1	1
Voltage (rated)	208	208
Amperage (rated)	-	1.20

Test Data		
	Design	Actual
SFAN CFM	600	629
Motor Speed SetPt	-	HIGH
RL Voltage	-	213
RL Amperage	-	0.52
RA CFM	550	578
OA CFM	50	51

Performance Data		
	Design	Actual
Suction ESP	-	0.20
Discharge ESP	-	0.26
Total ESP	0.6	0.46

Completed By: Brian Irvin on 04/15/2021

Notes:

Diffuser Supply (GRD)

FC432 / 408

Asset	Area Served	Type	Size	DESIGN CFM	AK	CFM(1)	CFM(2)	FINAL CFM	% to design
SGRD1	407	A1	8	125		80		136	108.8
SGRD2	408	A1	8	175		134		191	109.1
SGRD3	409	A1	8	175		115		182	104.0
SGRD4	410	A1	8	125		144		120	96.0

Completed By: Brian Irvin on 04/06/2021

Asset	Area Served	Notes

System/Unit: Fan Coil



Asset: FC433

AREA: 417

Unit Data		
	Design	Actual
MFG	NA	MITSUBISHI
Model Num	NA	TPEFYP012
Serial Num	-	OYR0391830P80 E
Configuration	HORIZONTAL	HORIZONTAL

Test Data		
	Design	Actual
SFAN CFM	700	654
Motor Speed SetPt	-	HIGH
RL Voltage	-	214
RL Amperage	-	0.58
RA CFM	165	519
OA CFM	135	135

Motor Data		
	Design	Actual
Horsepower	-	
Phase	1	1
Voltage (rated)	208	208
Amperage (rated)	-	1.20

Performance Data		
	Design	Actual
Suction ESP	-	0.24
Discharge ESP	-	0.25
Total ESP	0.6	0.49

Completed By: Brian Irvin on 04/15/2021

Notes:

Diffuser Supply (GRD)

FC433 / 417

Asset	Area Served	Type	Size	DESIGN CFM	AK	CFM(1)	CFM(2)	FINAL CFM	% to design
SGRD1	417	A1	8	150		77		140	93.3
SGRD2	417	A1	8	150		85		136	90.7
SGRD3	415	A1	8	100		92		105	105.0
SGRD4	414	A1	8	150		62		133	88.7
SGRD5	413	A1	8	150		118		140	93.3

Completed By: Brian Irvin on 04/15/2021

Asset	Area Served	Notes

System/Unit: Fan Coil



Asset: FC434

AREA: 445

Unit Data		
	Design	Actual
MFG	NA	MITSUBISHI
Model Num	NA	TPEFYP006
Serial Num	-	OYR02304330P8 0D
Configuration	HORIZONTAL	HORIZONTAL

Test Data		
	Design	Actual
SFAN CFM	425	407
Motor Speed SetPt	-	MEDIUM HIGH
RL Voltage	-	213
RL Amperage	-	0.27
RA CFM	215	323
OA CFM	85	84

Motor Data		
	Design	Actual
Horsepower	-	
Phase	1	1
Voltage (rated)	208	208
Amperage (rated)	-	1.05

Performance Data		
	Design	Actual
Suction ESP	-	0.14
Discharge ESP	-	0.28
Total ESP	0.6	0.42

Completed By: Brian Irvin on 04/15/2021

Notes:

Diffuser Supply (GRD)

FC434 / 445

Asset	Area Served	Type	Size	DESIGN CFM	AK	CFM(1)	CFM(2)	FINAL CFM	% to design
SGRD1	423	A1	8	100		75		96	96.0
SGRD2	424	A1	8	50		65		53	106.0
SGRD3	425	A1	8	25		79		27	108.0
SGRD4	445	A5	6	25		0		23	92.0
SGRD5	446	A5	6	25		51		25	100.0
SGRD6	447	A5	6	25		50		25	100.0
SGRD7	420	A1	8	175		54		158	90.3

Completed By: Brian Irvin on 04/15/2021

Asset	Area Served	Notes

System/Unit: Fan Coil



Asset: FC435

AREA: 426

Unit Data		
	Design	Actual
MFG	NA	MITSUBISHI
Model Num	NA	TPEFYP036
Serial Num	-	08R0176303P80 L
Configuration	HORIZONTAL	HORIZONTAL

Test Data		
	Design	Actual
SFAN CFM	1175	1115
Motor Speed SetPt	-	HIGH
RL Voltage	-	213
RL Amperage	-	1.36
RA CFM	1030	970
OA CFM	145	145

Motor Data		
	Design	Actual
Horsepower	-	
Phase	1	1
Voltage (rated)	208	208
Amperage (rated)	-	3.50

Performance Data		
	Design	Actual
Suction ESP	-	0.14
Discharge ESP	-	0.24
Total ESP	0.6	0.38

Completed By: Brian Irvin on 04/15/2021

Notes:

Diffuser Supply (GRD)

FC435 / 426

Asset	Area Served	Type	Size	DESIGN CFM	AK	CFM(1)	CFM(2)	FINAL CFM	% to design
SGRD1	426	D2	8	100		307		105	105.0
SGRD2	426	D2	8	100		304		107	107.0
SGRD3	426	D2	8	100		260		109	109.0
SGRD4	422	C3	10	295		77		265	89.8
SGRD5	422	C3	10	295		98		266	90.2
SGRD6	422	C3	10	295		93		263	89.2

Completed By: Brian Irvin on 04/08/2021

Asset	Area Served	Notes

System/Unit: Fan Coil



Asset: FC436

AREA: 444

Unit Data		
	Design	Actual
MFG	NA	MITSUBISHI
Model Num	NA	TPEFYP018
Serial Num	-	OYR0277530P80 G
Configuration	HORIZONTAL	HORIZONTAL

Motor Data		
	Design	Actual
Horsepower	-	
Phase	1	1
Voltage (rated)	208	208
Amperage (rated)	-	1.20

Test Data		
	Design	Actual
SFAN CFM	600	617
Motor Speed SetPt	-	HIGH
RL Voltage	-	213
RL Amperage	-	0.49
RA CFM	535	552
OA CFM	65	65

Performance Data		
	Design	Actual
Suction ESP	-	0.25
Discharge ESP	-	0.26
Total ESP	0.6	0.51

Completed By: Brian Irvin on 04/15/2021

Notes:

Diffuser Supply (GRD)

FC436 / 444

Asset	Area Served	Type	Size	DESIGN CFM	AK	CFM(1)	CFM(2)	FINAL CFM	% to design
SGRD1	444	A1	8	200		161		206	103.0
SGRD2	444	A1	8	200		130		203	101.5
SGRD3	444	A1	8	200		167		208	104.0

Completed By: Brian Irvin on 04/15/2021

Asset	Area Served	Notes

System/Unit: Fan Coil



Asset: FC437

AREA: 443A

Unit Data		
	Design	Actual
MFG	NA	MITSUBISHI
Model Num	NA	TPEFYP036
Serial Num	-	09R0110930P80 C
Configuration	HORIZONTAL	HORIZONTAL

Test Data		
	Design	Actual
SFAN CFM	300	314
Motor Speed SetPt	-	MEDIUM LOW
RL Voltage	-	213
RL Amperage	-	0.21
RA CFM	225	240
OA CFM	75	74

Motor Data		
	Design	Actual
Horsepower	-	
Phase	1	1
Voltage (rated)	208	208
Amperage (rated)	-	3.50

Performance Data		
	Design	Actual
Suction ESP	-	0.14
Discharge ESP	-	0.28
Total ESP	0.6	0.42

Completed By: Brian Irvin on 04/15/2021

Notes:

Diffuser Supply (GRD)

FC437 / 443A

Asset	Area Served	Type	Size	DESIGN CFM	AK	CFM(1)	CFM(2)	FINAL CFM	% to design
SGRD1	443A	A1	8	100		75		98	98.0
SGRD2	443B	A1	8	50		88		55	110.0
SGRD3	442A	A1	8	100		113		107	107.0
SGRD4	442B	A1	8	50		97		54	108.0

Completed By: Brian Irvin on 04/06/2021

Asset	Area Served	Notes

System/Unit: Fan Coil



Asset: FC438

AREA: 441B

Unit Data		
	Design	Actual
MFG	NA	MITSUBISHI
Model Num	NA	TPEFYP008
Serial Num	-	OYR0227230P80 D
Configuration	HORIZONTAL	HORIZONTAL

Motor Data		
	Design	Actual
Horsepower	-	
Phase	1	1
Voltage (rated)	208	208
Amperage (rated)	-	1.05

Test Data		
	Design	Actual
SFAN CFM	300	313
Motor Speed SetPt	-	MEDIUM LOW
RL Voltage	-	214
RL Amperage	-	0.21
RA CFM	225	235
OA CFM	75	78

Performance Data		
	Design	Actual
Suction ESP	-	0.18
Discharge ESP	-	0.29
Total ESP	0.6	0.47

Completed By: Brian Irvin on 04/15/2021

Notes:

Diffuser Supply (GRD)

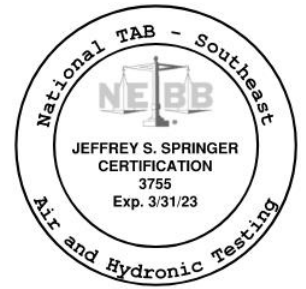
FC438 / 441B

Asset	Area Served	Type	Size	DESIGN CFM	AK	CFM(1)	CFM(2)	FINAL CFM	% to design
SGRD1	441B	A1	8	50		76		54	108.0
SGRD2	441A	A1	8	100		109		104	104.0
SGRD3	427A	A1	8	100		110		103	103.0
SGRD4	427B	A1	8	50		71		52	104.0

Completed By: Brian Irvin on 04/06/2021

Asset	Area Served	Notes

System/Unit: Fan Coil



Asset: FC439

AREA: 452

Unit Data		
	Design	Actual
MFG	NA	MITSUBISHI
Model Num	NA	TPEFYP024
Serial Num	-	OYR0278030P80 H
Configuration	HORIZONTAL	HORIZONTAL

Motor Data		
	Design	Actual
Horsepower	-	
Phase	1	1
Voltage (rated)	208	208
Amperage (rated)	-	1.20

Test Data		
	Design	Actual
SFAN CFM	900	833
Motor Speed SetPt	-	MEDIUM LOW
RL Voltage	-	213
RL Amperage	-	0.51
RA CFM	750	677
OA CFM	150	156

Performance Data		
	Design	Actual
Suction ESP	-	0.16
Discharge ESP	-	0.27
Total ESP	0.6	0.43

Completed By: Brian Irvin on 04/15/2021

Notes:

Diffuser Supply (GRD)

FC439 / 452

Asset	Area Served	Type	Size	DESIGN CFM	AK	CFM(1)	CFM(2)	FINAL CFM	% to design
SGRD1	452	A1	8	175		153		162	92.6
SGRD2	452	A1	8	175		172		182	104.0
SGRD3	452	A1	8	175		170		172	98.3
SGRD4	452	A1	8	150		185		159	106.0
SGRD5	452	A1	8	150		158		158	105.3

Completed By: Brian Irvin on 04/15/2021

Asset	Area Served	Notes

System/Unit: Fan Coil



Asset: FC440

AREA: 441B

Unit Data		
	Design	Actual
MFG	NA	MITSUBISHI
Model Num	NA	TPEFYP008
Serial Num	-	OYR0230230P80 D
Configuration	HORIZONTAL	HORIZONTAL

Test Data		
	Design	Actual
SFAN CFM	300	323
Motor Speed SetPt	-	MEDIUM LOW
RL Voltage	-	213
RL Amperage	-	0.21
RA CFM	225	245
OA CFM	75	78

Motor Data		
	Design	Actual
Horsepower	-	
Phase	1	1
Voltage (rated)	208	208
Amperage (rated)	-	1.05

Performance Data		
	Design	Actual
Suction ESP	-	0.17
Discharge ESP	-	0.26
Total ESP	0.6	0.43

Completed By: Brian Irvin on 04/15/2021

Notes:

Diffuser Supply (GRD)

FC440 / 441B

Asset	Area Served	Type	Size	DESIGN CFM	AK	CFM(1)	CFM(2)	FINAL CFM	% to design
SGRD1	440B	A1	8	50		61		54	108.0
SGRD2	440A	A1	8	100		88		109	109.0
SGRD3	428A	A1	8	100		83		107	107.0
SGRD4	428B	A1	8	50		60		53	106.0

Completed By: Brian Irvin on 04/15/2021

Asset	Area Served	Notes

System/Unit: Fan Coil



Asset: FC441

AREA: 430

Unit Data		
	Design	Actual
MFG	NA	MITSUBISHI
Model Num	NA	TPEFYP018
Serial Num	-	OYR0267030P80 G
Configuration	HORIZONTAL	HORIZONTAL

Test Data		
	Design	Actual
SFAN CFM	600	638
Motor Speed SetPt	-	HIGH
RL Voltage	-	212
RL Amperage	-	0.60
RA CFM	555	594
OA CFM	45	44

Motor Data		
	Design	Actual
Horsepower	-	
Phase	1	1
Voltage (rated)	208	208
Amperage (rated)	-	1.20

Performance Data		
	Design	Actual
Suction ESP	-	0.08
Discharge ESP	-	0.23
Total ESP	0.6	0.31

Completed By: Brian Irvin on 04/15/2021

Notes:

Diffuser Supply (GRD)

FC441 / 430

Asset	Area Served	Type	Size	DESIGN CFM	AK	CFM(1)	CFM(2)	FINAL CFM	% to design
SGRD1	430	A1	8	150		167		162	108.0
SGRD2	437	A1	8	150		43		147	98.0
SGRD3	430	A1	10	300		295		329	109.7

Completed By: Brian Irvin on 04/15/2021

Asset	Area Served	Notes

System/Unit: Fan Coil



Asset: FC442

AREA: 453

Unit Data		
	Design	Actual
MFG	NA	MITSUBISHI
Model Num	NA	TPEFYP012
Serial Num	-	OYR0391730P80 E
Configuration	HORIZONTAL	HORIZONTAL

Test Data		
	Design	Actual
SFAN CFM	300	306
Motor Speed SetPt	-	MEDIUM LOW
RL Voltage	-	213
RL Amperage	-	0.19
RA CFM	275	206
OA CFM	100	100

Motor Data		
	Design	Actual
Horsepower	-	
Phase	1	1
Voltage (rated)	208	208
Amperage (rated)	-	1.20

Performance Data		
	Design	Actual
Suction ESP	-	0.07
Discharge ESP	-	0.22
Total ESP	0.6	0.29

Completed By: Brian Irvin on 04/15/2021

Notes:

Diffuser Supply (GRD)

FC442 / 453

Asset	Area Served	Type	Size	DESIGN CFM	AK	CFM(1)	CFM(2)	FINAL CFM	% to design
SGRD1	453	A1	8	125		107		120	96.0
SGRD2	453	A1	8	50		92		55	110.0
SGRD3	453	A1	8	125		109		131	104.8

Completed By: Brian Irvin on 04/15/2021

Asset	Area Served	Notes

System/Unit: Fan Coil



Asset: FC443

AREA: 456

Unit Data		
	Design	Actual
MFG	NA	MITSUBISHI
Model Num	NA	TPEFYP015
Serial Num	-	0XR0152630P80 F
Configuration	HORIZONTAL	HORIZONTAL

Motor Data		
	Design	Actual
Horsepower	-	
Phase	1	1
Voltage (rated)	208	208
Amperage (rated)	-	1.20

Test Data		
	Design	Actual
SFAN CFM	500	487
Motor Speed SetPt	-	MEDIUM HIGH
RL Voltage	-	211
RL Amperage	-	0.38
RA CFM	435	422
OA CFM	65	65

Performance Data		
	Design	Actual
Suction ESP	-	0.09
Discharge ESP	-	0.22
Total ESP	0.6	0.31

Completed By: Brian Irvin on 04/15/2021

Notes:

Diffuser Supply (GRD)

FC443 / 456

Asset	Area Served	Type	Size	DESIGN CFM	AK	CFM(1)	CFM(2)	FINAL CFM	% to design
SGRD1	456	C1	8	100		136		102	102.0
SGRD2	456	C1	8	150		88		139	92.7
SGRD3	455	C1	8	150		74		138	92.0
SGRD4	455	A1	8	100		103		108	108.0

Completed By: Brian Irvin on 04/08/2021

Asset	Area Served	Notes

System/Unit: Fan Coil



Asset: FC444

AREA: LARGE 454

Unit Data		
	Design	Actual
MFG	NA	MITSUBISHI
Model Num	NA	TPEFYP036
Serial Num	-	08R0175930P80 L
Configuration	HORIZONTAL	HORIZONTAL

Test Data		
	Design	Actual
SFAN CFM	1200	1252
Motor Speed SetPt	-	HIGH
RL Voltage	-	212
RL Amperage	-	1.63
RA CFM	1070	1120
OA CFM	130	132

Motor Data		
	Design	Actual
Horsepower	-	
Phase	1	1
Voltage (rated)	208	208
Amperage (rated)	-	3.50

Performance Data		
	Design	Actual
Suction ESP	-	0.09
Discharge ESP	-	0.36
Total ESP	0.6	0.45

Completed By: Brian Irvin on 04/15/2021

Notes:

Diffuser Supply (GRD)

FC444 / LARGE 454

Asset	Area Served	Type	Size	DESIGN CFM	AK	CFM(1)	CFM(2)	FINAL CFM	% to design
SGRD1	LARGE 454	C1	8	200		146		216	108.0
SGRD2	LARGE 454	C1	8	200		144		210	105.0
SGRD3	LARGE 454	C1	8	200		141		214	107.0
SGRD4	LARGE 454	C1	8	200		160		205	102.5
SGRD5	LARGE 454	C1	8	200		148		201	100.5
SGRD6	LARGE 454	C1	8	200		149		206	103.0

Completed By: Brian Irvin on 03/24/2021

Asset	Area Served	Notes

System/Unit: Fan Coil



Asset: FC445

AREA: OPEN OFFICE 451

Unit Data		
	Design	Actual
MFG	NA	MITSUBISHI
Model Num	NA	TPEFYP054
Serial Num	-	OYR0066330P80 N
Configuration	HORIZONTAL	HORIZONTAL

Test Data		
	Design	Actual
SFAN CFM	1500	1381
Motor Speed SetPt	-	HIGH
RL Voltage	-	211
RL Amperage	-	1.55
RA CFM	1350	1227
OA CFM	150	154

Motor Data		
	Design	Actual
Horsepower	-	
Phase	1	1
Voltage (rated)	208	208
Amperage (rated)	-	3.51

Performance Data		
	Design	Actual
Suction ESP	-	0.15
Discharge ESP	-	0.32
Total ESP	0.6	0.47

Completed By: Brian Irvin on 04/15/2021

Notes: Two 45 degree elbows were installed due to structural constraints deviating from GRD. Unit balanced proportionally. Diffusers too close to the 45 degree elbow's and would not raise to design without taking other diffusers substantially out of design. 2 45 degree elbows were installed due to structural constraints deviating from GRD. Unit balanced proportionally.

Diffuser Supply (GRD)

FC445 / OPEN OFFICE 451

Asset	Area Served	Type	Size	DESIGN CFM	AK	CFM(1)	CFM(2)	FINAL CFM	% to design
SGRD1	451	C3	8	215		188		196	91.2
SGRD2	451	C3	8	215		189		206	95.8
SGRD3	451	C3	8	215		169		202	94.0
SGRD4	451	C3	8	215		194		193	89.8
SGRD5	451	C3	8	215		197		195	90.7
SGRD6	451	C3	8	215		203		196	91.2
SGRD7	451	C3	8	215		211		193	89.8

Completed By: Brian Irvin on 04/08/2021

Asset	Area Served	Notes

System/Unit: Fan Coil



Asset: FC446

AREA: 451

Unit Data		
	Design	Actual
MFG	NA	MITSUBISHI
Model Num	NA	TPEFYP018
Serial Num	-	OYR0266930P80 G
Configuration	HORIZONTAL	HORIZONTAL

Test Data		
	Design	Actual
SFAN CFM	600	589
Motor Speed SetPt	-	MEDIUM
RL Voltage	-	212
RL Amperage	-	0.38
RA CFM	500	489
OA CFM	100	100

Motor Data		
	Design	Actual
Horsepower	-	
Phase	1	1
Voltage (rated)	208	208
Amperage (rated)	-	1.20

Performance Data		
	Design	Actual
Suction ESP	-	0.12
Discharge ESP	-	0.34
Total ESP	0.6	0.46

Completed By: Brian Irvin on 04/15/2021

Notes:

Diffuser Supply (GRD)

FC446 / 451

Asset	Area Served	Type	Size	DESIGN CFM	AK	CFM(1)	CFM(2)	FINAL CFM	% to design
SGRD1	451	A1	8	100		91		92	92.0
SGRD2	451	A1	8	100		98		110	110.0
SGRD3	451	A1	8	100		93		102	102.0
SGRD4	451	A1	8	100		91		92	92.0
SGRD5	451	A1	8	100		86		97	97.0
SGRD6	451	A1	8	100		88		96	96.0

Completed By: Brian Irvin on 04/06/2021

Asset	Area Served	Notes

System/Unit: Fan Coil



Asset: FC447

AREA: 451

Unit Data		
	Design	Actual
MFG	NA	MITSUBISHI
Model Num	NA	TPEFYP054
Serial Num	-	OYR0066530P80 N
Configuration	HORIZONTAL	HORIZONTAL

Motor Data		
	Design	Actual
Horsepower	-	
Phase	1	1
Voltage (rated)	208	208
Amperage (rated)	-	3.51

Test Data		
	Design	Actual
SFAN CFM	1485	1218
Motor Speed SetPt	-	HIGH
RL Voltage	-	213
RL Amperage	-	1.54
RA CFM	1335	1066
OA CFM	150	152

Performance Data		
	Design	Actual
Suction ESP	-	0.10
Discharge ESP	-	0.21
Total ESP	0.6	0.31

Completed By: Brian Irvin on 04/15/2021

Notes: duct runs that are too close to the elbow would not raise to design without taking other diffusers out of design due to turbulence

Diffuser Supply (GRD)

FC447 / 451

Asset	Area Served	Type	Size	DESIGN CFM	AK	CFM(1)	CFM(2)	FINAL CFM	% to design
SGRD1	451	C3	8	215		163		176	81.9
SGRD2	451	C3	8	215		101		186	86.5
SGRD3	451	C3	8	215		147		181	84.2
SGRD4	451	C3	8	215		113		170	79.1
SGRD5	451	C3	8	215		133		168	78.1
SGRD6	451	C3	8	215		155		168	78.1
SGRD7	451	C3	8	215		127		169	78.6

Completed By: Brian Irvin on 04/08/2021

Asset	Area Served	Notes

System/Unit: Fan Coil



Asset: FC448

AREA: 449

Unit Data		
	Design	Actual
MFG	NA	MITSUBISHI
Model Num	NA	TPEFYP015
Serial Num	-	OXR0153130P8 0F
Configuration	HORIZONTAL	HORIZONTAL

Motor Data		
	Design	Actual
Horsepower	-	
Phase	1	1
Voltage (rated)	208	208
Amperage (rated)	-	1.20

Test Data		
	Design	Actual
SFAN CFM	500	467
Motor Speed SetPt	-	MEDIUM LOW
RL Voltage	-	213
RL Amperage	-	0.26
RA CFM	465	431
OA CFM	35	36

Performance Data		
	Design	Actual
Suction ESP	-	0.10
Discharge ESP	-	0.29
Total ESP	0.6	0.39

Completed By: Brian Irvin on 04/15/2021

Notes:

Diffuser Supply (GRD)

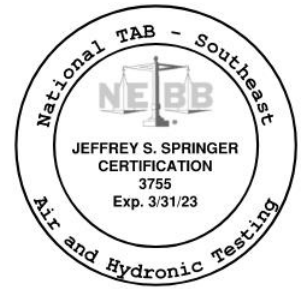
FC448 / 449

Asset	Area Served	Type	Size	DESIGN CFM	AK	CFM(1)	CFM(2)	FINAL CFM	% to design
SGRD1	448	A1	8	150		130		146	97.3
SGRD2	449	A1	8	150		179		163	108.7
SGRD3	449	A1	8	150		159		158	105.3

Completed By: Brian Irvin on 04/15/2021

Asset	Area Served	Notes

System/Unit: Fan Coil



Asset: FC449

AREA: 434A

Unit Data		
	Design	Actual
MFG	NA	MITSUBISHI
Model Num	NA	TPEFYP008
Serial Num	-	OYR0230330P80 D
Configuration	HORIZONTAL	HORIZONTAL

Test Data		
	Design	Actual
SFAN CFM	300	288
Motor Speed SetPt	-	MEDIUM
RL Voltage	-	215
RL Amperage	-	0.15
RA CFM	225	214
OA CFM	75	74

Motor Data		
	Design	Actual
Horsepower	-	
Phase	1	1
Voltage (rated)	208	208
Amperage (rated)	-	1.05

Performance Data		
	Design	Actual
Suction ESP	-	0.16
Discharge ESP	-	0.35
Total ESP	0.6	0.51

Completed By: Brian Irvin on 04/15/2021

Notes:

Diffuser Supply (GRD)

FC449 / 434A

Asset	Area Served	Type	Size	DESIGN CFM	AK	CFM(1)	CFM(2)	FINAL CFM	% to design
SGRD1	435A	A1	8	100		51		91	91.0
SGRD2	435B	A1	8	50		53		55	110.0
SGRD3	434A	A1	8	100		69		90	90.0
SGRD4	434B	A1	8	50		69		52	104.0

Completed By: Brian Irvin on 04/06/2021

Asset	Area Served	Notes

System/Unit: Fan Coil



Asset: FC450

AREA: 432A

Unit Data		
	Design	Actual
MFG	NA	MITSUBISHI
Model Num	NA	TPEFYP008
Serial Num	-	OYR0230130P80 D
Configuration	HORIZONTAL	HORIZONTAL

Motor Data		
	Design	Actual
Horsepower	-	
Phase	1	1
Voltage (rated)	208	208
Amperage (rated)	-	1.05

Test Data		
	Design	Actual
SFAN CFM	300	297
Motor Speed SetPt	-	MEDIUM LOW
RL Voltage	-	215
RL Amperage	-	0.19
RA CFM	225	221
OA CFM	75	76

Performance Data		
	Design	Actual
Suction ESP	-	0.13
Discharge ESP	-	0.31
Total ESP	0.6	0.44

Completed By: Brian Irvin on 04/15/2021

Notes:

Diffuser Supply (GRD)

FC450 / 432A

Asset	Area Served	Type	Size	DESIGN CFM	AK	CFM(1)	CFM(2)	FINAL CFM	% to design
SGRD1	432A	A1	8	100		87		95	95.0
SGRD2	432B	A1	8	50		75		53	106.0
SGRD3	433A	A1	8	100		97		94	94.0
SGRD4	433B	A1	8	50		72		55	110.0

Completed By: Brian Irvin on 04/15/2021

Asset	Area Served	Notes

System/Unit: Fan Coil



Asset: FC451

AREA: 439A

Unit Data		
	Design	Actual
MFG	NA	MITSUBISHI
Model Num	NA	TPEFYP008
Serial Num	-	OYR0231230P80 D
Configuration	HORIZONTAL	HORIZONTAL

Test Data		
	Design	Actual
SFAN CFM	300	325
Motor Speed SetPt	-	MEDIUM LOW
RL Voltage	-	214
RL Amperage	-	0.22
RA CFM	225	251
OA CFM	75	76

Motor Data		
	Design	Actual
Horsepower	-	
Phase	1	1
Voltage (rated)	208	208
Amperage (rated)	-	1.05

Performance Data		
	Design	Actual
Suction ESP	-	0.14
Discharge ESP	-	0.32
Total ESP	0.6	0.46

Completed By: Brian Irvin on 04/15/2021

Notes:

Diffuser Supply (GRD)

FC451 / 439A

Asset	Area Served	Type	Size	DESIGN CFM	AK	CFM(1)	CFM(2)	FINAL CFM	% to design
SGRD1	439B	A1	8	50		76		55	110.0
SGRD2	439A	A1	8	100		109		108	108.0
SGRD3	429A	A1	8	100		115		107	107.0
SGRD4	429B	A1	8	50		76		55	110.0

Completed By: Brian Irvin on 04/06/2021

Asset	Area Served	Notes